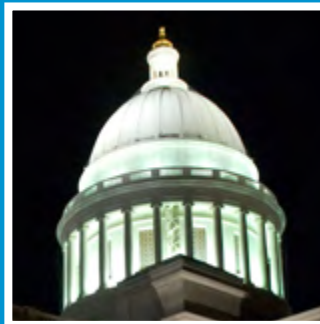


Arkansas Insurance Department

2011 Annual Report



**1200 West Third Street
Little Rock, AR 72201-1904
1-501-371-2600, 1-800-282-9134
www.insurance.arkansas.gov**



The Honorable Mike Beebe, Governor of Arkansas

I am pleased to present to you the 2011 Annual Report of the Arkansas Insurance Department. This report is established by the provisions of Arkansas Code Ann. § 23-61-112 and summarizes the activities of the Arkansas Insurance Department for the calendar year ending December 31, 2011.

In addition to the required financial disclosures and listing of companies operating in Arkansas, this report highlights the work of the Arkansas Insurance Department on behalf of Arkansas insurance consumers.

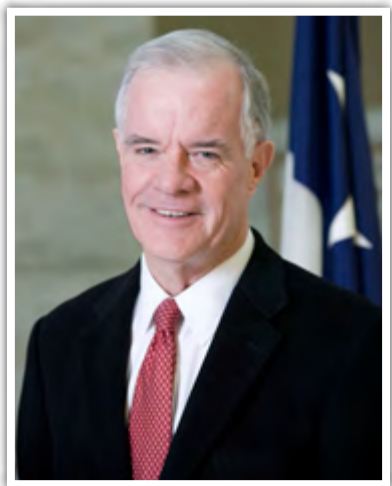
Sincerely,

A handwritten signature in blue ink that reads "Jay Bradford". The signature is fluid and cursive, with the first letters of "Jay" and "Bradford" being capitalized and prominent.

Jay Bradford
State Insurance Commissioner

Table of Contents

A Message from the Commissioner	1
History of Insurance Commissioners	2
AID Leadership Team	5
AID Divisions and Programs	6
AID Receipts, Revenue Distribution and Expenditures	9
AID Services:	
Consumer Complaints and Inquiries	10
Consumer Recoveries	10
Medicare Recipients Served	10
Producers & Business Entities (Agents and Agencies)	11
New Company Admissions	11
Total Licensed Companies	11
AID Examinations:	
Financial Examinations	12
Financial Analysis	12
Prepaid Funeral Benefits Contracts	12
Insurance Fraud Investigations	12
Legal Proceedings	12
Liquidations and Rehabilitations	12
Insurers Listed by Arkansas Premium as of 12/31/2011	
Domestic Surplus Lines	13
Farmers Mutual Aid Associations	13
Fraternal Organizations	13
HMO and HMDI Companies	13
Life and Health Companies	14
Property and Casualty Companies	22
Title Companies	34



A Message From the Commissioner

I find being your Arkansas Insurance Commissioner to be rewarding for the various challenges it presents. The members of my staff and I continue to work to protect Arkansas's insurance consumers.

The past year has included the task of meeting the many benchmarks set forth in the Affordable Care Act (ACA) which was signed into law in March of 2010. One of my missions is to maintain as much state regulation of the health insurance market as I can under the provisions of the ACA in order to protect our citizens, especially those new to having coverage.

The Arkansas Insurance Department collects and distributes a large amount of funds from various sources, including licenses, permits, and fees. In 2011, more than \$97 million dollars was directed to General Revenue while more than \$48 million went to police and firemen pension funds.

I think upon review of the information contained in this report, you will see confirmation that we do a good job of regulating and overseeing the business of insurance here in Arkansas. That success would not be possible without the hard work of many dedicated employees who care very much about the citizens of our state.

Mission Statement

The purpose of the State Insurance Department is to serve and protect the public interest by the equitable enforcement of the state's laws and regulations affecting the insurance industry.

The primary mission of the State Insurance Department shall be consumer protection through insurer solvency and market conduct regulation, and fraud prosecution and deterrence.

History of Insurance Commissioners

AUDITORS OF STATE

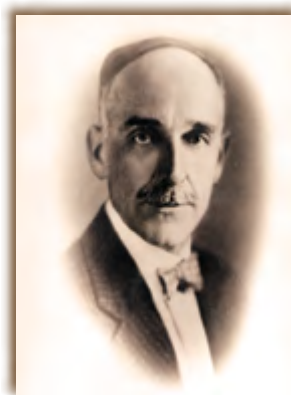
The work of the Insurance Department was formerly placed by law in the office of the Auditor of State. The "Insurance Bureau" was established in the Auditor's office by the Act of April 25, 1873, the Auditor being charged by same with the execution of the laws of the state relating to insurance.

The General Assembly of 1917, by Act No. 190, approved March 7, 1917, on account of the greatly increased volume of work required to be done by the insurance department, separated same from the office of the Auditor of State and created the State Insurance Department. The head of the Insurance Department shall be an Insurance Commissioner appointed by the Governor with the advice and consent of the Senate. The Insurance Commissioner shall enforce the provisions of the Arkansas Insurance Code and shall execute the duties imposed upon him or her by the Arkansas Insurance Code.

Ex-officio Commissioners of Insurance

1873 - 1874	Stephen Wheeler	
1874 - 1877	W. R. Miller	
1877 - 1882	John Crawford	
1883 - 1886	A. W. Files	(Died in office. W. R. Miller was appointed to fulfill the unexpired term.)
1887 - 1892	W. S. Dunlap	
1893 - 1896	C. B. Miles	
1897 - 1900	Clay Sloan	
1901 - 1904	T. C. Monroe	
1905 - 1908	A. E. Moore	
1909 - 1912	John R. Jobe	
1912 - 1913	John N. Oathout	(Elected Auditor September 1912, died June 20, 1913. L. Coffman appointed June 23, 1913.)
1913 - 1914	L. L. Coffman	(Resigned March 4, 1914. M. F. Dickinson was appointed to fulfill the unexpired term.)
1915 - 1916	M. F. Dickinson	

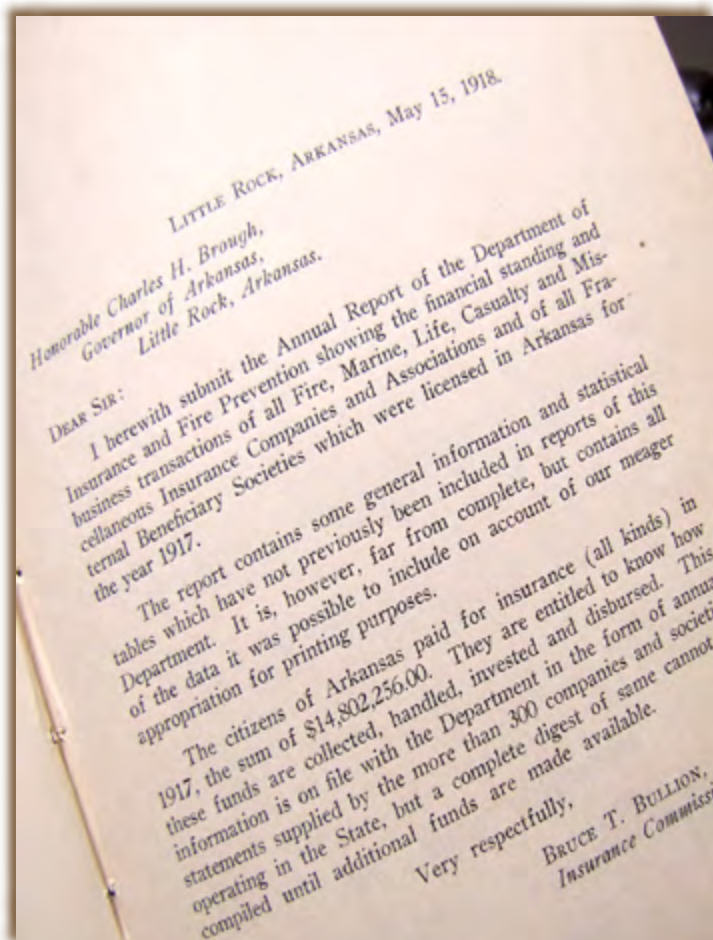
INSURANCE COMMISSIONERS



1917-1924
Bruce T. Bullion



1924-1925/1937-1941
M. J. Harrison





1925-1927/1929-1931
W. E. Floyd



1927-1929
J. S. Maloney



1931-1933
A. D. Dulaney



1933-1937
U. A. Gentry



1941-1945/1949-1953
J. Herbert Graves



1945-1949
Jack McKenzie



1953-1967
Harvey G. Combs



1967-1968
John Norman Harkey



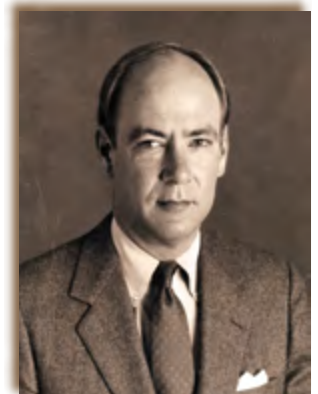
1968-1970
Allen W. Horne



1970-1972
A. Gene Sykes



1972-1976
Ark Monroe, III



1976-1982
*W. H. L. Woodyard, III



1983-1985
Linda N. Garner



1985-1988
Robert M. Eubanks, III



1988 - 1990
Ron Taylor



1990-1996
*Lee Douglass



1997-2005
*Mike Pickens



2005-2008
Julie Benafield Bowman



2009
Lenita Blasingame



2009-
Jay Bradford

***President of the National Association of Insurance Commissioners (NAIC)**

The Arkansas Insurance Department is accredited by the NAIC. To achieve this accreditation, the Department must meet stringent national standards that demonstrate it effectively regulates insurance companies for solvency. The Arkansas Insurance Department views accreditation by the NAIC as an important part of our commitment to the citizens of Arkansas. Accreditation standards enable us to provide expanded consumer protections and to institute and maintain the highest standards in financial regulation. NAIC repeats the accreditation review every five years to confirm that the Department continues to meet all requirements. The Department was most recently accredited in March 2011.

AID Leadership Team

ADMINISTRATION

Jay Bradford, State Insurance Commissioner 501-371-2623 jay.bradford@arkansas.gov
Lenita Blasingame, Insurance Chief Deputy Commissioner 501-371-2824 lenita.blasingame@arkansas.gov
Alice Jones, Public Information Manager 501-371-2835 alice.jones@arkansas.gov

ACCOUNTING

Pam Looney, Insurance Assistant Deputy Commissioner 501-371-2605 pam.looney@arkansas.gov

COMPLIANCE

Dan Honey, Insurance Deputy Commissioner 501-371-2800 dan.honey@arkansas.gov

CONSUMER SERVICES

Jackie Smith, Insurance Consumer Protection Manager 501-371-2640 jackie.smith@arkansas.gov

CRIMINAL INVESTIGATION

Greg Sink, Criminal Investigation Division Director 501-371-2790 greg.sink@arkansas.gov

FINANCE

Mel Anderson, Insurance Deputy Commissioner Financial Reg. 501-371-2665 mel.anderson@arkansas.gov

HEALTH BENEFITS EXCHANGE PARTNERSHIP

Cynthia Crone, Director 501-683-3634 cynthia.crone@arkansas.gov

HEALTH INSURANCE PREMIUM RATE REVIEW

Lowell Nicholas, Insurance Deputy Commissioner 501-683-3638 lowell.nicholas@arkansas.gov

HUMAN RESOURCES

Andrea May, Personnel Manager 501-371-2818 andrea.may@arkansas.gov

INFORMATION SYSTEMS

Vacant, Deputy Commissioner Information Services 501-683-2657 @arkansas.gov

LEGAL

Bill Lacy, Insurance Deputy Commissioner & General Counsel 501-371-2820 bill.lacy@arkansas.gov

LICENSE

Fred Stiffler, Insurance Licensing Manager 501-371-2750 fred.stiffler@arkansas.gov

LIQUIDATION

Steve Uhrynowycz, Deputy Receiver 501-371-2776 steve.uhrynowycz@arkansas.gov

PUBLIC EMPLOYEE CLAIMS

Nathan Culp, Insurance Public Employee Claims Director 501-371-2700 nathan.culp@arkansas.gov

RISK MANAGEMENT

Drew Carpenter, Director Risk Management 501-371-2690 drew.carpenter@arkansas.gov

SENIOR HEALTH INSURANCE INFORMATION PROGRAM (SHIIP)

Melissa Simpson, SHIIP Manager 501-371-2782 melissa.simpson@arkansas.gov

AID Divisions and Programs

ADMINISTRATION

501-371-2622

insurance.administration@arkansas.gov

The Administration Division oversees the overall operations of the AID, establishes Department policy, handles all media inquiries, security, and coordinates consumer protection and outreach activities. Each of the divisions works collectively to ensure the Department's mission of consumer protection is fulfilled. This staff of more than 180 highly skilled and dedicated employees is committed to serving the citizens of Arkansas every day.

ACCOUNTING

501-371-2605

insurance.accounting@arkansas.gov

The Accounting Division collects and oversees fees and premium taxes from all insurance companies conducting business in the State of Arkansas. These fees not only fund the AID (no monies are received from the state's General Revenue Fund), but the taxes are also used to contribute to the state's Police and Firemen Pension Funds and General Revenue. The division handles all purchasing and accounts payable for AID, as well as the development of biennium budgets.

COMPLIANCE

501-371-2800

insurance.LnH@arkansas.gov
insurance.PnC@arkansas.gov

Life & Health (L&H) is responsible for the review and approval of life and health forms, rates and advertising. L&H must approve premiums for individual health policies and must ensure that benefits on health policies provide an acceptable relationship to the premiums charged. L&H reviews contracts for guaranteed interest policies, including life and annuity and variable contracts, equity indexed annuities, funeral insurance, credit life and disability, individual and group health plans, long-term care, Medicare supplements and supplemental benefits contracts, as well as contracts for health maintenance organizations (HMOs).

Property & Casualty (P&C) is responsible for monitoring and regulating rate and form filing activities. All insurance companies transacting business in the State of Arkansas for surety, workers' compensation, and all other property and casualty coverage must submit their forms to P&C for approval. The forms are then reviewed to ensure compliance with state law. For most lines of insurance, Arkansas is considered a "competitive rating state" and, as such, requests for rate changes are effective 20 days after they are filed unless those changes are excessive, inadequate, or unfairly discriminatory.

CONSUMER SERVICES

501-371-2640 or 800-852-5494

insurance.consumers@arkansas.gov

The Consumer Services Division (CSD) assists insurance consumers with complaints and inquiries regarding insurance companies, producers, and adjusters. CSD investigates all complaints, working with the insurance company and the consumer to determine the appropriate course of action. CSD travels statewide to provide educational information and materials, and in the event of significant storm damage, travels to damaged areas to assist homeowners with filing claims and procuring emergency living expenses. CSD is working to enhance its communication efforts to consumers in order to assist with needs related to the Affordable Care Act.

CRIMINAL INVESTIGATION

501-371-2790 or 866-660-0888

insurance.fraud@arkansas.gov

The Criminal Investigation Division (CID) receives hundreds of referrals of suspected fraud each year. CID investigates and prosecutes all categories of insurance fraud. Investigations that result in a finding of a criminal violation are referred to the appropriate prosecuting attorney's office. In 2011, CID achieved a 100% conviction rate on those cases referred for prosecution.

FINANCE

501-371-2665

insurance.finance@arkansas.gov

The primary goal of the Finance Division is to protect insurance consumers through effective solvency regulation by monitoring the financial condition of all domestic and foreign insurance companies operating in the state; conducting

financial and market conduct examinations; reviewing other financial information and reports filed by insurance entities, such as business plans, reinsurance agreements, merger and acquisition documents, company formation documents, market research and feasibility studies; approves the licensing of insurers, captives, risk retention groups, surplus lines, charitable annuities, continuing care facilities, motor clubs, reinsurance intermediaries, service contract providers, and accredited/trusted reinsurers; examines prepaid funeral contracts and conducts financial examinations of licensees' trust funds and custodial accounts; and oversees statutory security deposits of insurance companies.

HEALTH BENEFITS EXCHANGE PARTNERSHIP **501-683-7231** [**insurance.exchange@arkansas.gov**](mailto:insurance.exchange@arkansas.gov)

A Health Benefits Exchange is a health insurance marketplace where consumers can easily compare available health plan options based on price, benefits, service, and quality and then enroll in coverage that best meets their needs. The Patient Protection and Affordable Care Act (PPACA) of 2010 directs that every state will have a health benefits exchange available to lawfully-present residents, with open enrollment beginning October 1, 2013 and coverage effective January 1, 2014. Qualifying individuals, families, and small businesses with 50 or fewer employees may receive financial assistance through federal premium subsidies, tax credits, or other cost reduction measures that help make insurance affordable for those purchasing through the new exchange. In 2011, Arkansas did not elect to operate its own Exchange. Therefore, Arkansans seeking cost reductions will shop through the Federally-facilitated Exchange. In December 2011, Arkansas chose to explore a newly created Federally-facilitated Exchange Partnership Model available to states not electing a State Exchange but desiring to operate specific exchange functions in their state. Using a transparent and inclusive planning process, the Arkansas Insurance Department is designing two critical Exchange functions for local implementation: insurance plan regulation and consumer assistance. Arkansas's operation of these functions will allow the Arkansas Insurance Department to maintain consumer protection and service functions for Arkansans purchasing insurance through the Federally-facilitated Exchange.

HEALTH INSURANCE PREMIUM RATE REVIEW **501-683-7023** [**insurance.hirr@arkansas.gov**](mailto:insurance.hirr@arkansas.gov)

The Health Insurance Premium Rate Review Division (HIPRR) was created to enforce provisions of the Affordable Care Act implementing improvements to states' rate review processes. On July 1, 2011, the Center for Consumer Information and Insurance Oversight (CCIIO) determined that Arkansas has an effective rate review program after reviewing Arkansas's laws, regulations, and bulletins. The ACA establishes a process for reviewing the reasonableness of health insurance premiums. The primary purpose of HIPRR is to help improve insurer accountability and consumer transparency regarding health insurance premium rate increases.

HUMAN RESOURCES **501-371-2818** [**insurance.human.resources@arkansas.gov**](mailto:insurance.human.resources@arkansas.gov)

The Human Resources Division is responsible for recruiting, hiring, payroll, employee benefits, personnel budget preparation and management, employee training, and continuing education for staff.

INFORMATION SYSTEMS **501-371-2657** [**insurance.information.systems@arkansas.gov**](mailto:insurance.information.systems@arkansas.gov)

The Information Systems Division (IS) keeps the Department operating effectively and efficiently in the ever-changing world of technology. This is achieved through the IS strategy of leveraging up-to-date, state of the art software and systems technology to continually increase the productivity of the overall Department. The result is minimal growth in the number of Department staff in the face of continued growth in the size of the regulated industry and revenue.

LEGAL **501-371-2820** [**insurance.legal@arkansas.gov**](mailto:insurance.legal@arkansas.gov)

The Legal Division works closely with every division within the AID, participating in numerous investigations, drafting legislation, rules, bulletins, directives, legal opinions, and investigating consumer complaints. Division attorneys represent the Commissioner and AID staff in lawsuits or other proceedings, administrative hearings and court appeals pertaining to alleged licensee insurance code or rule violations by a licensee and insurance company acquisitions, mergers, reinsurance agreements and similar transactions. 2011 recommendations of the Commissioner as to amendments or supplementation

of laws affecting insurance and as to matters affecting the Department were addressed in the 2011 Legislative Session. Legislation passed can be viewed at www.insurance.arkansas.gov/Legal%20Dataservices/Bulletins/3-2011.pdf.

LICENSE

501-371-2750

insurance.license@arkansas.gov

The Licensing Division is responsible for the licensing of resident and nonresident producers, adjusters, title agents, and business entities that are soliciting, selling or negotiating insurance in the State of Arkansas. License oversees the producer examinations and investigates all resident applicants by reviewing Arkansas State Police records. It also ensures that necessary laws are followed regarding license renewals and continuing education.

LIQUIDATION

501-371-2776

insurance.liquidation@arkansas.gov

The Liquidation Division, on behalf of the Insurance Commissioner as Receiver, manages the day to day affairs of insolvent insurance company estates and insolvent prepaid funeral benefit trusts. Although the Liquidation Division performs certain functions on behalf of the Commissioner, individuals employed with this division are not employed by the State of Arkansas and are not considered state employees. Liquidation does not receive any funding from the State of Arkansas. Liquidation administers the Arkansas Life and Health Insurance Guaranty Association (ALHIGA) and the Arkansas Property & Casualty Guaranty Fund (APCGF). During 2011, APCGF paid over \$1,282,124 to adjust, settle or litigate claims and recovered over \$4,208,108 as a result of nineteen non-domestic and one domestic insurance company receiverships. During 2011, ALHIGA provided benefits to Arkansas insureds and claimants totaling more than \$5,612,651, and recovered over \$1,968,657 as a result of eight domestic and fourteen non-domestic insurance company receiverships.

PUBLIC EMPLOYEE CLAIMS

501-371-2700

insurance.public.employee.claims@arkansas.gov

The Public Employee Claims Division (PECD) is responsible for the investigation and management of more than 3,600 workers' compensation claims filed each year for Arkansas state employees. Workers' compensation coverage is also provided for emergency service volunteers who are accidentally injured while performing services under the call and supervision of the State of Arkansas. PECD encourages state agencies to implement safety programs, hoping to reduce the number of injuries suffered by state employees. PECD personnel give presentations to several audiences each year. The prevention of injuries helps in three areas: 1) improves the quality of life of employees; 2) helps agencies with staffing issues; and 3) reduces workers' compensation costs for the taxpayers of the State of Arkansas.

RISK MANAGEMENT

501-371-2690

insurance.risk.management@arkansas.gov

The Risk Management Division (Risk) was established to minimize the cost of insurance and surety bonding to Arkansas state agencies, and to analyze and make recommendations on loss control and safety programs in an effort to protect state assets. In 2004, Risk assumed the responsibility of providing insurance coverage, consulting, and loss control services to public schools that choose to participate in the Public School Property and Vehicle Insurance Trust Fund. Property inspections and appraisals are conducted on approximately 5,500 state owned and leased structures and 2,500 school district structures with insured values of \$12.5 billion. A vehicle safety program covering 5,500 state agency and 5,000 public school vehicles has been in effect for many years, resulting in improved loss ratios. Risk also offers an on-site advanced defensive driver training at no cost to state agencies and participating schools.

SENIOR HEALTH INSURANCE INFORMATION PROGRAM

501-371-2782 or 800-224-6330

insurance.SHIIP@arkansas.gov

The job of the Senior Health Insurance Information Program (SHIIP) is to help Arkansans save money and make informed decisions about Medicare. SHIIP recruits and trains a volunteer network throughout the state to provide in-person information, assistance, and presentations as well as help at community events and health fairs. SHIIP produces Medicare, Medicare Advantage, and Medicare Part D publications for order and distribution via its website. In addition, SHIIP assists with applications for Medicare subsidy programs like Medicare Savings Program and Extra Help enabling recipients to save thousands of dollars annually.



AID Receipts, Revenue Distribution and Expenditures

Fiscal Year 2011 Receipts

Insurance Department Trust Fund.....	\$ 19,769,986
Federal Funds	1,050,400
Premium & Other Taxes.....	156,495,607
Licenses, Permits and Fees	<u>24,298,325</u>
	\$201,614,318

Distribution of Revenues

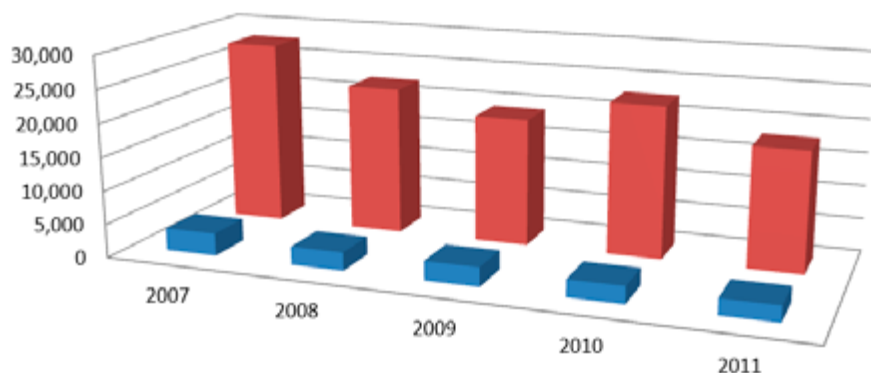
General Revenue	\$ 97,225,146
Police & Firemen Pension Funds	48,955,842
Insurance Department Funds	<u>55,433,330</u>
	\$201,614,318

Fiscal Year 2010 Expenditures

Regulatory Services	\$10,556,400
---------------------------	---------------------

AID Services

Complaints and Inquiries



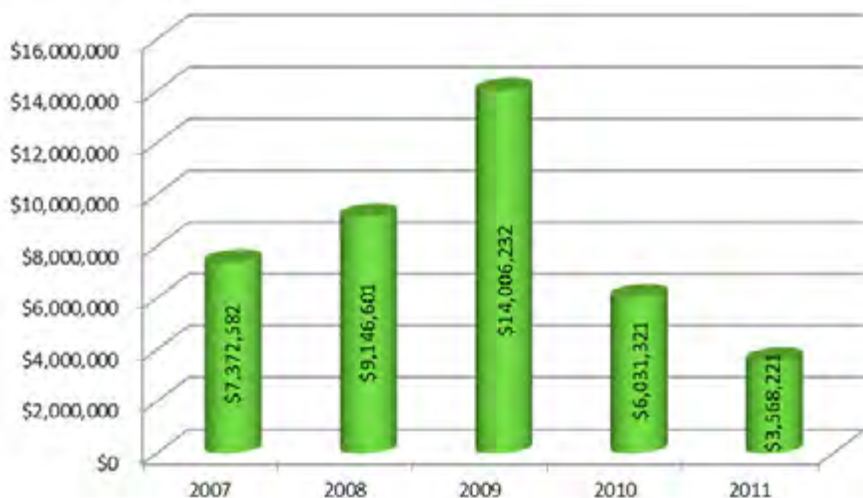
A complaint is a written grievance filed by an insurance consumer or their advocate with our Consumer Services Division (CSD).

Inquiries are informal questions answered by a CSD representative.

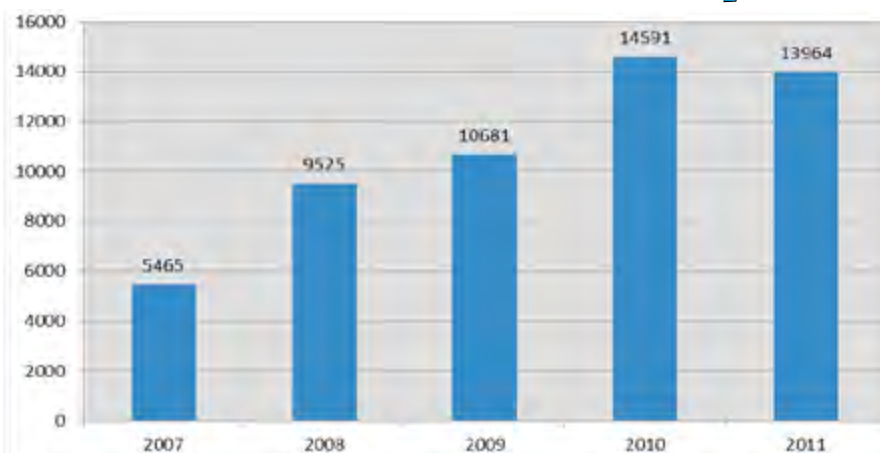
	2007	2008	2009	2010	2011
Complaints	3,379	2,731	2,864	2,584	2,391
Inquiries	27,819	22,353	19,207	22,810	18,048

Recoveries

Recoveries are amounts recovered for consumers by CSD in excess of the amount initially offered by insurance companies.



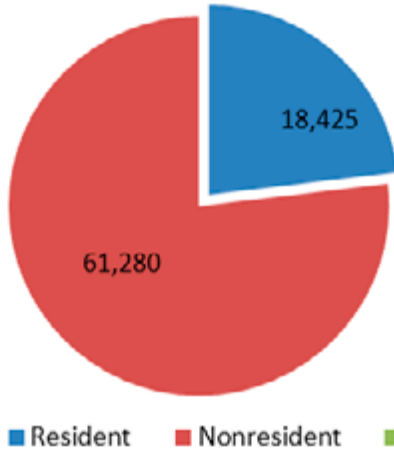
Medicare Recipients Served



The Senior Health Insurance Information Program (SHIIP) provides Medicare counseling, education and assistance to Medicare beneficiaries and their caregivers.

Producers and Business Entities (Agents and Agencies)

Producers and Adjusters



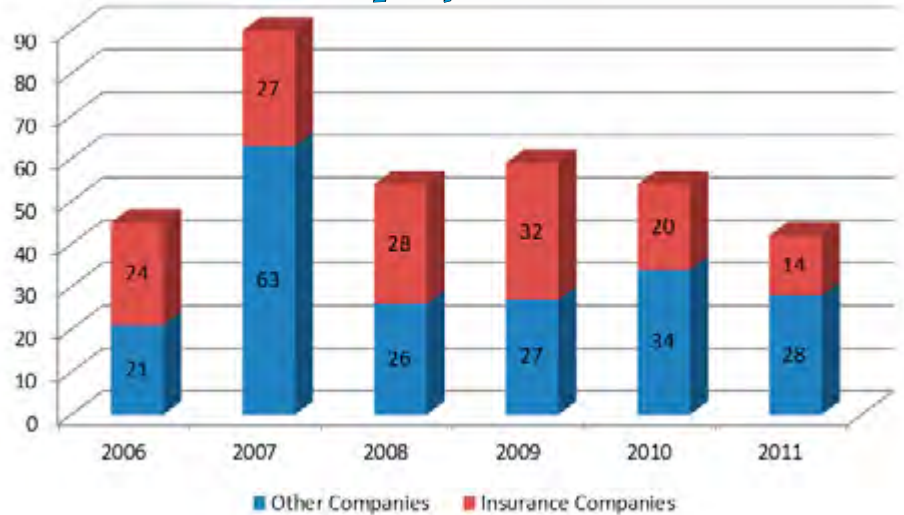
AID License Division licenses resident and nonresident producers, adjusters, title agents and business entities that are soliciting, selling or negotiating insurance in the State of Arkansas. "Resident" means the producer or business entity is based in Arkansas.

Business Entities



New company admissions are subject to in-depth analysis by our Finance Division. AID admitted 14 new insurance companies and 28 other companies in 2011. Other companies include automobile clubs, risk retention groups, charitable gift annuity organizations, service contract providers, Accredited/Trusted Reinsurers, and surplus lines.

New Company Admissions



Total Licensed Companies

Licensed Insurance Companies	1,555
Domestic (Arkansas) Insurers.....	59
Foreign Insurers	1,496
Accredited/Trusted Reinsurers	29
Charitable Gift Annuity Organizations	182
Continuing Care Facilities	9
Automobile/Motor Club Associations	19
Reinsurance Intermediaries Brokers	17
Reinsurance Intermediaries Managers	4
Service Contract Providers	74
Surplus Lines Insurers	194
Domestic (Arkansas)	1
Foreign	132
Alien (non U.S.A.)	61

AID Examinations

Financial Examinations

Domestic Life Companies.....	6
Domestic Property & Casualty Companies	3
Domestic Health Maintenance Organizations.....	4
Other Domestic Organizations	4

Financial Analysis*

Domestic Financial Reviews.....	306
Domestic Supplemental Filings Reviews	225
Holding Company & Other Filings Reviews.....	214

Prepaid Funeral Benefits Contracts

Examinations Conducted	56
Number of Licenses.....	192
Reports Reviewed.....	960

Insurance Fraud Investigations

Referrals Received	971
Cases Referred for Prosecution	62
Successful Prosecutions	43
Fines	\$44,500
Restitution	\$1,415,382

Legal Proceedings**

Bulletins Issued	12
Directives Issued	4
Orders Issued.....	276
Rules Finalized	1
Investigations Initiated	183
Investigations Closed	148
Fines and Penalties.....	\$16,800
Recoveries & Restitution for Arkansas Consumers.....	\$234,963
Multi-State Settlement (Allstate)	\$0
Company Mergers	33
Certificate of Authority Cancellations	58

Liquidations and Rehabilitations**

A. *Liquidations* A.C.A. § 23-61-112(2).

1) Farmers Mutual Insurance Company of Little Rock, an Arkansas domiciled company, No. 60CV 2011-3929, Petition to place company into liquidation due to hazardous financial condition as a result of its attempting to dissolve without having an approved plan of dissolution. On October 5, 2011, the court granted the petition to place the company into liquidation. The company reported assets as of August 5, 2011, of \$154,112.40 and liabilities of \$45,126.00. Presently the estate remains in administration.

B. *Rehabilitations* A.C.A. § 23-61-112(3).

No original actions were filed for rehabilitation of any domestic Arkansas insurance companies during the reporting year of 2011.

*Includes Annual and Quarterly Reviews

**Department Bulletins, Directives, Public Orders, Rules and Court Orders of Rehabilitation/Liquidation are now available in electronic format at www.insurance.arkansas.gov/Legal%20Dataservices/divpage.htm.

Insurers Listed by Arkansas Premium as of 12/31/2011

Domestic Surplus Lines

NAIC	Company Name	AR Premium	Market Share	Assets	Liabilities	Capital & Surplus
38920	Kinsale Ins Co	\$11,195	100.00%	\$83,609,543	\$28,593,550	\$55,015,993
	TOTAL	\$11,195	100.00%			

Farmers Mutual Aid Associations

NAIC	Company Name	AR Premium	Market Share	Assets	Liabilities	Capital & Surplus
14244	Farmers Mutual Ins Co (Gentry)	\$3,515,524	34.93%	\$12,193,586	\$3,179,780	\$9,013,806
14250	Farm & Home Mutual (Paragould)	\$2,240,317	22.26%	\$1,835,774	\$1,162,348	\$673,426
14247	Farmers Mutual Ins (Rogers)	\$1,171,416	11.64%	\$5,530,042	\$870,449	\$4,659,593
14252	Washington County Farmers Mutual Fire	\$957,980	9.52%	\$25,013,381	\$727,277	\$24,286,104
14246	Farmers Fire Ins Co	\$899,047	8.93%	\$1,126,170	\$649,065	\$477,105
14245	Farmers Mutual Fire (Carroll County)	\$855,148	8.50%	\$2,313,767	\$729,093	\$1,584,674
14248	Farmers Protective Ins Co	\$390,207	3.88%	\$578,827	\$262,357	\$316,470
14251	Logan County Farmers Mutual Aid	\$35,346	0.35%	\$1,916,636	\$35,346	\$1,881,290
	TOTAL	\$10,064,985	100.00%			

Fraternal Organizations

NAIC	Company Name	AR Premium	Market Share	Assets	Liabilities	Capital & Surplus
57541	Modern Woodmen Of America	\$61,174,161	44.80%	\$11,379,654,673	\$10,114,257,772	\$1,265,396,901
57320	Woodmen World Life Ins Soc	\$29,777,751	21.81%	\$9,340,672,299	\$8,536,162,438	\$804,509,861
56014	Thrivent Financial For Lutherans	\$29,420,350	21.54%	\$62,256,789,548	\$58,253,318,764	\$4,003,470,784
58033	Knights Of Columbus	\$6,217,698	4.55%	\$18,026,582,008	\$16,310,782,448	\$1,715,799,560
58068	Independent Order Of Foresters Us Br	\$2,942,396	2.15%	\$2,789,815,266	\$2,630,753,911	\$159,061,355
56383	Order of United Commercial Travelers	\$2,740,304	2.01%	\$21,468,563	\$10,496,960	\$10,971,603
57657	Royal Neighbors Of America	\$2,079,550	1.52%	\$792,485,851	\$581,004,276	\$211,481,575
56499	Woodmen World Assur Life Assn	\$1,932,142	1.41%	\$58,700,026	\$46,681,152	\$12,018,874
56030	Catholic Financial Life	\$249,552	0.18%	\$1,242,691,239	\$1,214,740,621	\$27,950,618
57088	Degree Of Honor Protective Assn	\$9,770	0.01%	\$207,059,887	\$201,371,506	\$5,688,381
57223	Baptist Life Assn	\$8,983	0.01%	\$31,557,238	\$31,047,663	\$509,575
57622	Polish Natl Alliance Us Of N.A.	\$1,391	0.00%	\$438,353,600	\$424,985,889	\$13,367,711
56170	Woman's Life Ins Society	\$590	0.00%	\$189,725,571	\$163,773,731	\$25,951,840
	TOTAL	\$136,554,638	100.00%			

Health Maintenance Organizations and Hospital, Medical, Dental Insurers

NAIC	Company Name	AR Premium	Market Share	Assets	Liabilities	Capital & Surplus
95442	Hmo Partners Inc	\$213,407,307	29.87%	\$146,008,992	\$44,004,465	\$102,004,527
95448	QCA Health Plan Inc	\$148,995,258	20.85%	\$42,921,215	\$24,102,140	\$18,819,075
95792	Windsor Health Plan Inc	\$87,715,685	12.28%	\$125,465,961	\$80,090,638	\$45,375,323
12282	Arkansas Community Care Inc	\$85,328,599	11.94%	\$26,185,720	\$13,740,611	\$12,445,109
47155	Delta Dental Plan of AR Inc	\$81,826,767	11.45%	\$78,444,436	\$16,375,778	\$62,068,658
95885	Humana Health Plan Inc	\$60,426,969	8.46%	\$528,760,277	\$263,283,176	\$265,477,101
95446	United Healthcare of AR Inc	\$36,548,973	5.12%	\$13,482,618	\$6,404,327	\$7,078,291
11559	American Dental Providers of AR Inc	\$199,036	0.03%	\$531,057	\$91,513	\$439,544
	TOTAL	\$714,448,594	100.00%			

Life and Health

NAIC	Company Name	AR Premium	Market Share	Assets	Liabilities	Capital & Surplus
83470	USABLE Mutual Ins Co	\$1,212,083,028	21.28%	\$1,221,696,181	\$640,037,796	\$581,658,383
79413	UnitedHealthcare Ins Co	\$326,220,923	5.73%	\$15,022,073,890	\$10,600,438,232	\$4,421,635,658
73288	Humana Ins Co	\$246,838,040	4.33%	\$5,403,945,772	\$2,629,678,622	\$2,774,267,150
12567	Care Improvement Plus South Central Ins	\$201,802,283	3.54%	\$369,624,354	\$193,789,793	\$175,834,559
65056	Jackson Natl Life Ins Co	\$164,880,751	2.89%	\$102,931,851,828	\$99,286,035,530	\$3,645,816,298
61050	MetLife Investors USA Ins Co	\$151,793,574	2.66%	\$70,927,088,545	\$69,255,396,215	\$1,671,692,330
65978	Metropolitan Life Ins Co	\$137,727,901	2.42%	\$333,261,361,864	\$319,754,592,753	\$13,506,769,111
68241	Prudential Ins Co Of America	\$109,245,080	1.92%	\$246,841,533,201	\$238,681,813,109	\$8,159,720,092
69345	Teachers Ins & Ann Assoc Of America	\$103,163,881	1.81%	\$225,931,548,315	\$198,800,651,963	\$27,130,896,352
66869	Nationwide Life Ins Co	\$101,813,259	1.79%	\$99,940,796,704	\$96,349,883,587	\$3,590,913,117
65838	John Hancock Life Ins Co (USA)	\$86,596,591	1.52%	\$218,286,672,552	\$213,315,426,323	\$4,971,246,229
65676	Lincoln Natl Life Ins Co	\$83,236,183	1.46%	\$165,221,598,104	\$158,466,816,214	\$6,754,781,890
68896	Southern Farm Bureau Life Ins Co	\$79,063,511	1.39%	\$11,673,187,629	\$9,769,032,175	\$1,904,155,454
79227	Pruco Life Ins Co	\$78,147,964	1.37%	\$59,524,848,284	\$58,028,885,607	\$1,495,962,677
60380	American Family Life Assur Co of Col	\$74,968,425	1.32%	\$103,581,665,920	\$97,210,548,241	\$6,371,117,679
61271	Principal Life Ins Co	\$61,860,540	1.09%	\$121,390,358,064	\$117,172,164,349	\$4,218,193,715
70238	Variable Ann Life Ins Co	\$60,304,080	1.06%	\$65,226,402,413	\$60,987,588,677	\$4,238,813,736
65005	RiverSource Life Ins Co	\$58,503,869	1.03%	\$91,266,382,531	\$88,585,044,815	\$2,681,337,717
86231	Transamerica Life Ins Co	\$57,722,055	1.01%	\$102,718,294,673	\$97,596,652,446	\$5,121,642,227
67660	Pennsylvania Life Ins Co	\$55,757,584	0.98%	\$916,978,454	\$518,335,493	\$398,642,961
94358	USABLE Life	\$55,264,342	0.97%	\$346,798,845	\$202,838,961	\$143,959,885
90611	Allianz Life Ins Co Of N America	\$54,958,011	0.96%	\$89,741,961,523	\$84,748,833,979	\$4,993,127,544
69108	State Farm Life Ins Co	\$53,678,728	0.94%	\$53,597,466,065	\$46,799,075,475	\$6,798,390,590
62235	Unum Life Ins Co Of America	\$53,615,575	0.94%	\$18,303,506,089	\$16,754,721,662	\$1,548,784,427
61689	Aviva Life & Ann Co	\$53,532,095	0.94%	\$48,504,278,279	\$45,825,669,656	\$2,678,608,622
67091	Northwestern Mutual Life Ins Co	\$52,776,512	0.93%	\$188,691,825,087	\$173,878,394,205	\$14,813,430,882
66915	New York Life Ins Co	\$48,421,885	0.85%	\$130,685,773,269	\$115,556,824,261	\$15,128,949,008
92738	American Equity Invest Life Ins Co	\$47,982,786	0.84%	\$24,685,608,866	\$23,088,591,206	\$1,597,017,660
68136	Protective Life Ins Co	\$45,979,860	0.81%	\$32,250,893,541	\$29,625,008,805	\$2,625,884,736
86509	Ing Life Ins & Ann Co	\$41,164,691	0.72%	\$69,339,992,228	\$67,408,056,960	\$1,931,935,268
69868	United Of Omaha Life Ins Co	\$39,721,149	0.70%	\$15,737,816,555	\$14,701,742,541	\$1,036,074,014
91596	New York Life Ins & Ann Corp	\$38,830,201	0.68%	\$103,286,605,553	\$97,492,395,788	\$5,794,209,765
88072	Hartford Life Ins Co	\$37,824,117	0.66%	\$144,043,794,800	\$138,123,645,114	\$5,920,149,687
62944	AXA Equitable Life Ins Co	\$36,958,593	0.65%	\$134,495,628,090	\$129,870,811,995	\$4,624,816,095
70815	Hartford Life & Accident Ins Co	\$35,229,565	0.62%	\$15,388,250,093	\$8,651,007,220	\$6,737,242,873
67466	Pacific Life Ins Co	\$35,059,135	0.62%	\$95,724,385,487	\$90,147,404,063	\$5,576,981,424
62308	Connecticut General Life Ins Co	\$34,896,585	0.61%	\$20,751,890,093	\$17,833,716,445	\$2,918,173,648
60054	Aetna Life Ins Co	\$34,569,860	0.61%	\$20,894,358,289	\$17,847,209,571	\$3,047,148,719
68322	Great West Life & Ann Ins Co	\$32,922,234	0.58%	\$45,163,085,887	\$44,093,633,507	\$1,069,452,380
65757	Shelter Life Ins Co	\$32,342,827	0.57%	\$1,012,793,334	\$850,488,193	\$162,305,141
81973	Coventry Health & Life Ins Co	\$32,056,159	0.56%	\$813,364,488	\$473,431,061	\$339,933,420
66044	Midland Natl Life Ins Co	\$29,040,375	0.51%	\$30,132,858,287	\$28,278,617,314	\$1,854,240,974
60941	SunAmerica Ann & Life Assur Co	\$28,291,176	0.50%	\$26,085,444,093	\$25,271,301,092	\$814,143,001
71153	Hartford Life & Ann Ins Co	\$28,018,969	0.49%	\$67,757,977,717	\$63,826,538,646	\$3,931,439,071
68608	Symetra Life Ins Co	\$25,471,436	0.45%	\$24,771,533,249	\$22,948,696,691	\$1,822,836,558
12231	UnitedHealthcare Ins Co of the River	\$25,407,371	0.45%	\$60,354,061	\$44,029,834	\$16,324,227
70670	Health Care Service Corp A Mutual Legal Re	\$22,883,478	0.40%	\$14,603,800,414	\$5,693,971,292	\$8,909,829,123
70688	Transamerica Financial Life Ins Co	\$22,792,115	0.40%	\$25,478,445,363	\$24,786,304,646	\$692,140,717
68675	Security Benefit Life Ins Co	\$22,164,037	0.39%	\$10,507,819,159	\$9,894,979,539	\$612,839,620
80942	ING USA Ann & Life Ins Co	\$21,978,439	0.39%	\$71,509,040,056	\$69,287,032,912	\$2,222,007,144
60410	American Fidelity Assur Co	\$20,757,109	0.36%	\$3,994,058,146	\$3,699,064,091	\$294,994,055
62286	Golden Rule Ins Co	\$20,606,630	0.36%	\$814,867,949	\$502,784,368	\$312,083,581
66850	National Western Life Ins Co	\$19,797,047	0.35%	\$8,669,718,989	\$7,747,196,719	\$922,522,270
66168	Minnesota Life Ins Co	\$19,555,856	0.34%	\$25,661,555,429	\$23,624,421,637	\$2,037,133,792

Life and Health (Cont.)

NAIC	Company Name	AR Premium	Market Share	Assets	Liabilities	Capital & Surplus
70432	Western Natl Life Ins Co	\$19,101,268	0.34%	\$47,095,380,660	\$43,078,867,859	\$4,016,512,801
70025	Genworth Life Ins Co	\$18,888,205	0.33%	\$35,784,159,614	\$32,686,843,913	\$3,097,315,701
68284	Pyramid Life Ins Co	\$18,483,553	0.32%	\$385,163,778	\$131,690,747	\$253,473,031
60534	American Heritage Life Ins Co	\$18,255,095	0.32%	\$1,650,118,782	\$1,356,433,704	\$293,685,078
63312	Great America Life Ins Co	\$18,088,826	0.32%	\$13,950,468,160	\$12,879,964,155	\$1,070,504,004
60488	American General Life Ins Co	\$17,785,616	0.31%	\$43,097,131,688	\$35,703,484,821	\$7,393,646,867
93513	MetLife Investors Ins Co	\$17,559,524	0.31%	\$13,096,389,022	\$12,496,054,390	\$600,334,632
93548	PHL Variable Ins Co	\$16,829,751	0.30%	\$5,438,310,578	\$5,125,474,054	\$312,836,524
61263	Bankers Life & Casualty Co	\$16,700,813	0.29%	\$14,515,876,760	\$13,699,080,203	\$816,796,557
60739	American Natl Ins Co	\$16,354,640	0.29%	\$17,390,041,492	\$15,389,490,437	\$2,000,551,055
67105	Reliastar Life Ins Co	\$15,862,227	0.28%	\$20,779,617,349	\$18,675,297,427	\$2,104,319,922
92916	United America Ins Co	\$15,725,490	0.28%	\$1,703,525,550	\$1,459,672,020	\$243,853,530
68195	Provident Life & Accident Ins Co	\$15,239,274	0.27%	\$8,417,239,993	\$7,764,280,465	\$652,959,528
92711	HCC Life Ins Co	\$15,132,255	0.27%	\$655,730,610	\$255,482,532	\$400,248,078
69019	Standard Ins Co	\$14,921,128	0.26%	\$16,014,089,145	\$14,874,855,842	\$1,139,233,304
64246	Guardian Life Ins Co Of America	\$14,875,703	0.26%	\$35,130,032,754	\$30,557,390,423	\$4,572,642,330
69663	USAA Life Ins Co	\$14,601,056	0.26%	\$18,240,268,063	\$16,536,863,667	\$1,703,404,396
64467	Wellcare Health Ins of IL Inc	\$14,592,094	0.26%	\$112,629,330	\$70,247,784	\$42,381,546
67644	Penn Mutual Life Ins Co	\$13,662,147	0.24%	\$13,059,814,071	\$11,517,066,350	\$1,542,747,721
66974	North America Co Life & Health Ins	\$13,539,915	0.24%	\$11,728,924,116	\$10,886,059,603	\$842,864,513
62049	Colonial Life & Accident Ins Co	\$13,330,085	0.23%	\$2,521,238,630	\$1,988,974,114	\$532,264,516
92622	Western Southern Life Assur Co	\$13,296,323	0.23%	\$11,394,862,743	\$10,408,003,220	\$986,859,523
68381	Reliance Standard Life Ins Co	\$13,022,233	0.23%	\$4,618,018,426	\$4,095,704,480	\$522,313,946
66672	American General Life & Accident Ins Co	\$12,986,685	0.23%	\$9,550,426,099	\$8,921,127,507	\$629,298,592
63177	Farmers New World Life Ins Co	\$12,617,693	0.22%	\$6,859,593,500	\$6,258,620,203	\$600,973,297
83836	Selected Funeral & Life Ins Co	\$12,549,461	0.22%	\$156,538,528	\$133,958,799	\$22,579,729
90328	First Health Life & Health Ins Co	\$12,332,257	0.22%	\$576,992,884	\$213,513,116	\$363,479,768
88668	Mutual Of America Life Ins Co	\$11,798,199	0.21%	\$13,502,329,412	\$12,656,151,556	\$846,177,856
65919	Primerica Life Ins Co	\$11,239,595	0.20%	\$1,575,790,249	\$1,132,649,316	\$443,140,933
65935	Massachusetts Mutual Life Ins Co	\$11,235,858	0.20%	\$136,968,407,839	\$125,551,042,335	\$11,417,365,503
63762	Medco Containment Life Ins Co	\$10,627,863	0.19%	\$243,997,892	\$60,506,401	\$183,491,491
65595	Lincoln Benefit Life Co	\$10,488,087	0.18%	\$2,052,361,376	\$1,732,907,361	\$319,454,015
68713	Security Life Of Denver Ins Co	\$10,286,638	0.18%	\$17,271,318,467	\$15,751,802,220	\$1,519,516,247
80314	Unicare Life & Health Ins Co	\$9,776,169	0.17%	\$642,920,080	\$493,592,006	\$149,328,074
65498	Life Ins Co Of N America	\$9,561,358	0.17%	\$5,628,883,219	\$4,756,476,958	\$872,406,261
80802	US Br Sun Life Assur Co of Canada	\$9,479,079	0.17%	\$17,348,695,393	\$16,331,107,813	\$1,017,587,580
65536	Genworth Life & Ann Ins Co	\$9,415,514	0.17%	\$23,484,472,138	\$21,641,541,294	\$1,842,930,844
68357	Reliable Life Ins Co	\$9,310,084	0.16%	\$21,275,145	\$8,655,115	\$12,620,029
62510	Equitrust Life Ins Co	\$9,270,679	0.16%	\$7,238,941,664	\$6,801,804,072	\$437,137,592
91472	Globe Life & Accident Ins Co	\$9,199,537	0.16%	\$3,208,256,885	\$2,771,413,227	\$436,843,659
65315	Liberty Life Assur Co Of Boston	\$9,176,571	0.16%	\$15,165,147,528	\$14,504,515,836	\$660,631,692
69477	Time Ins Co	\$8,953,240	0.16%	\$748,697,670	\$475,665,307	\$273,032,363
62626	Cuna Mutual Ins Society	\$8,740,283	0.15%	\$13,762,258,178	\$12,361,285,459	\$1,400,972,719
66281	Monumental Life Ins Co	\$8,502,853	0.15%	\$31,107,348,401	\$30,126,495,021	\$980,853,380
71412	Mutual Of Omaha Ins Co	\$8,262,195	0.15%	\$5,247,438,983	\$2,932,563,792	\$2,314,875,191
70211	Reassure America Life Ins Co	\$8,226,085	0.14%	\$17,110,427,798	\$16,020,968,358	\$1,089,459,440
60895	American United Life Ins Co	\$8,080,272	0.14%	\$17,342,635,551	\$16,506,714,126	\$835,921,425
67172	Ohio Natl Life Ins Co	\$8,022,454	0.14%	\$18,129,008,165	\$17,226,492,191	\$902,515,974
63274	Fidelity & Guaranty Life Ins Co	\$7,639,055	0.13%	\$15,784,822,188	\$14,938,388,152	\$846,434,036
83968	Citizens Fidelity Ins Co	\$7,033,094	0.12%	\$59,698,228	\$51,836,750	\$7,861,478
72850	United World Life Ins Co	\$7,009,083	0.12%	\$106,146,382	\$58,880,554	\$47,265,828
65021	Stonebridge Life Ins Co	\$6,946,841	0.12%	\$1,749,649,513	\$1,588,558,635	\$161,090,878
62146	Combined Ins Co Of America	\$6,884,124	0.12%	\$1,995,471,718	\$1,498,895,649	\$496,576,069
67814	Phoenix Life Ins Co	\$6,687,903	0.12%	\$14,057,809,472	\$13,329,022,010	\$728,787,462

Life and Health (Cont.)

NAIC	Company Name	AR Premium	Market Share	Assets	Liabilities	Capital & Surplus
91642	Forethought Life Ins Co	\$6,581,736	0.12%	\$5,465,835,793	\$5,049,456,262	\$416,379,531
66583	National Guardian Life Ins Co	\$6,461,893	0.11%	\$2,331,447,313	\$2,149,042,929	\$182,404,384
66427	MTL Ins Co	\$6,318,060	0.11%	\$1,652,164,919	\$1,555,795,043	\$96,369,876
70319	Washington Natl Ins Co	\$6,212,456	0.11%	\$5,335,854,005	\$4,834,971,960	\$500,882,044
70335	West Coast Life Ins Co	\$6,071,240	0.11%	\$4,085,226,081	\$3,596,931,540	\$488,294,541
77968	Family Heritage Life Ins Co Of America	\$6,020,450	0.11%	\$488,459,491	\$433,151,309	\$55,308,182
12321	American Continental Ins Co	\$5,901,154	0.10%	\$84,653,528	\$35,002,551	\$49,650,977
79065	Sun Life Assur Co Of Canada US	\$5,730,205	0.10%	\$43,017,229,612	\$41,701,959,394	\$1,315,270,218
70939	Gerber Life Ins Co	\$5,353,151	0.09%	\$2,110,008,005	\$1,894,477,996	\$215,530,009
87726	Metlife Ins Co of CT	\$5,319,902	0.09%	\$64,781,249,320	\$59,647,916,402	\$5,133,332,918
97055	Mega Life & Health Ins Co The	\$4,938,566	0.09%	\$346,013,046	\$235,490,073	\$110,522,973
65927	Lincoln Heritage Life Ins Co	\$4,904,655	0.09%	\$664,772,339	\$556,493,607	\$108,278,732
70998	Qualchoice Life & Health Ins Co Inc	\$4,879,775	0.09%	\$2,687,007	\$840,799	\$1,846,208
73881	American Life & Annuity Co	\$4,639,421	0.08%	\$44,125,487	\$41,667,808	\$2,457,677
84034	First Guaranty Ins Co	\$4,571,112	0.08%	\$50,319,089	\$46,755,727	\$3,563,363
65129	Kansas City Life Ins Co	\$4,541,782	0.08%	\$3,224,446,857	\$2,917,293,562	\$307,153,293
68462	Reserve Natl Ins Co	\$4,493,939	0.08%	\$118,577,093	\$57,991,976	\$60,585,117
60186	Allstate Life Ins Co	\$4,488,704	0.08%	\$53,978,754,388	\$50,523,097,543	\$3,455,656,845
78778	Guardian Ins & Ann Co Inc	\$4,466,603	0.08%	\$10,135,066,531	\$9,881,284,994	\$253,781,536
68543	Liberty Bankers Life Ins Co	\$4,437,052	0.08%	\$1,301,986,963	\$1,171,464,392	\$130,522,571
61883	Central United Life Ins Co	\$4,398,971	0.08%	\$312,453,124	\$255,888,101	\$56,565,023
60076	Security Plan Life Ins Co	\$4,126,445	0.07%	\$313,635,265	\$260,644,887	\$52,990,378
64017	Jefferson Natl Life Ins Co	\$4,055,222	0.07%	\$1,861,995,637	\$1,814,821,382	\$47,174,255
86630	Prudential Ann Life Assur Corp	\$4,021,255	0.07%	\$49,168,258,607	\$48,496,642,162	\$671,616,445
65331	Liberty Natl Life Ins Co	\$3,809,315	0.07%	\$6,802,845,676	\$6,180,475,850	\$622,369,825
65528	Life Ins Co Of The Southwest	\$3,801,231	0.07%	\$9,913,221,623	\$9,346,247,473	\$566,974,150
12575	SilverScript Ins Co	\$3,780,602	0.07%	\$487,614,690	\$305,906,967	\$181,707,723
70106	United States Life Ins Co In NYC	\$3,740,485	0.07%	\$23,095,858,402	\$21,253,589,923	\$1,842,268,479
92657	Nationwide Life & Ann Ins Co	\$3,715,508	0.07%	\$5,357,405,975	\$5,054,951,391	\$302,454,584
77399	Sterling Life Ins Co	\$3,678,864	0.06%	\$212,230,353	\$103,658,065	\$108,572,288
87963	National Teachers Assoc Life Ins Co	\$3,559,511	0.06%	\$325,627,231	\$269,353,902	\$56,273,328
60984	Compbenefits Ins Co	\$3,505,260	0.06%	\$33,220,022	\$10,098,545	\$23,121,477
60577	American Income Life Ins Co	\$3,491,442	0.06%	\$2,291,143,708	\$2,095,708,061	\$195,435,647
74365	Southern Pioneer Life Ins Co	\$3,470,336	0.06%	\$22,970,068	\$12,110,696	\$10,859,372
94250	Banner Life Ins Co	\$3,357,012	0.06%	\$1,524,029,822	\$1,271,325,687	\$252,704,135
65080	John Alden Life Ins Co	\$3,296,401	0.06%	\$486,786,738	\$379,248,416	\$107,538,322
89206	Ohio Natl Life Assur Corp	\$3,190,659	0.06%	\$3,172,481,925	\$2,840,076,098	\$332,405,827
63479	United Teacher Assoc Ins Co	\$3,182,368	0.06%	\$847,051,021	\$780,190,290	\$66,860,731
71730	Continental America Ins Co	\$3,161,139	0.06%	\$167,448,966	\$131,450,541	\$35,998,425
12902	Healthspring Life & Health Ins Co Inc	\$3,128,573	0.05%	\$292,996,719	\$113,898,029	\$179,098,691
62863	Trustmark Life Ins Co	\$3,121,442	0.05%	\$370,207,115	\$201,962,674	\$168,244,441
80578	Physicians Mutual Ins Co	\$2,985,380	0.05%	\$1,732,476,430	\$889,051,597	\$843,424,833
62952	Equitable Life & Casualty Ins Co	\$2,926,174	0.05%	\$230,618,149	\$199,698,146	\$30,920,003
62065	Colonial Penn Life Ins Co	\$2,888,285	0.05%	\$743,869,542	\$667,148,722	\$76,720,820
70408	Union Security Ins Co	\$2,845,161	0.05%	\$5,139,486,777	\$4,683,638,374	\$455,848,403
74900	Brokers Natl Life Assur Co	\$2,843,664	0.05%	\$25,005,480	\$8,470,523	\$16,534,957
65900	Conseco Life Ins Co	\$2,841,715	0.05%	\$4,151,629,599	\$4,034,213,486	\$117,416,112
80837	Union Central Life Ins Co	\$2,838,957	0.05%	\$6,883,167,631	\$6,429,262,478	\$453,905,153
61921	Citizens Security Life Ins Co	\$2,788,230	0.05%	\$24,297,914	\$12,690,610	\$11,607,304
69396	Texas Life Ins Co	\$2,744,214	0.05%	\$816,476,759	\$764,158,935	\$52,317,824
84174	Employees Life Co Mutual	\$2,739,433	0.05%	\$460,050,545	\$430,940,279	\$29,110,266
76112	Oxford Life Ins Co	\$2,704,986	0.05%	\$693,458,565	\$564,013,324	\$129,445,241
65242	Lafayette Life Ins Co	\$2,661,089	0.05%	\$2,996,105,315	\$2,843,769,818	\$152,335,497
61476	Boston Mutual Life Ins Co	\$2,627,894	0.05%	\$1,102,746,536	\$976,444,739	\$126,301,796

Life and Health (Cont.)

NAIC	Company Name	AR Premium	Market Share	Assets	Liabilities	Capital & Surplus
63665	General America Life Ins Co	\$2,575,121	0.05%	\$11,395,791,330	\$10,570,642,966	\$825,148,364
81108	United Security Life & Health Ins Co	\$2,552,592	0.04%	\$22,045,936	\$17,540,139	\$4,505,797
85561	Perico Life Ins Co	\$2,545,664	0.04%	\$69,449,918	\$19,579,463	\$49,870,455
80926	Sun Life & Health Ins Co	\$2,467,919	0.04%	\$65,126,061	\$20,816,467	\$44,309,594
72125	Physicians Life Ins Co	\$2,435,733	0.04%	\$1,268,942,225	\$1,160,219,520	\$108,722,705
60142	TIAA Cref Life Ins Co	\$2,356,697	0.04%	\$4,250,093,252	\$3,851,708,017	\$398,385,235
67989	American Memorial Life Ins Co	\$2,300,202	0.04%	\$2,202,904,713	\$2,102,591,367	\$100,313,346
76236	Cincinnati Life Ins Co	\$2,275,620	0.04%	\$3,357,267,584	\$3,076,083,643	\$281,183,941
98205	National Found Life Ins Co	\$2,252,602	0.04%	\$30,365,401	\$20,542,208	\$9,823,193
63258	Federated Life Ins Co	\$2,242,307	0.04%	\$1,187,522,931	\$925,973,983	\$261,548,947
61301	Ameritas Life Ins Corp	\$2,230,594	0.04%	\$7,278,337,028	\$5,929,188,689	\$1,349,148,339
69000	Northwestern Long Term Care Ins Co	\$2,176,680	0.04%	\$1,193,901,501	\$983,782,807	\$210,118,694
67539	Pan America Life Ins Co	\$2,148,036	0.04%	\$1,478,173,420	\$1,229,739,993	\$248,433,427
61999	Americo Fin Life & Ann Ins Co	\$2,120,228	0.04%	\$3,747,452,934	\$3,376,317,709	\$371,135,225
67598	Paul Revere Life Ins Co	\$2,115,136	0.04%	\$4,602,368,113	\$4,194,380,983	\$407,987,130
66141	Health Net Life Ins Co	\$1,978,679	0.03%	\$548,568,019	\$195,686,594	\$352,881,425
63983	United Heritage Life Ins Co	\$1,958,776	0.03%	\$486,568,140	\$437,444,140	\$49,124,001
62928	EMC Natl Life Co	\$1,940,304	0.03%	\$1,043,278,296	\$963,366,905	\$79,911,391
71714	Berkshire Life Ins Co of America	\$1,865,567	0.03%	\$3,034,691,785	\$2,503,785,730	\$530,906,055
84530	US Financial Life Ins Co	\$1,828,910	0.03%	\$628,360,706	\$566,509,671	\$61,851,035
61425	Trustmark Ins Co	\$1,803,726	0.03%	\$1,264,777,260	\$1,008,421,083	\$256,356,177
61492	Liberty Life Ins Co	\$1,794,286	0.03%	\$7,482,665,477	\$7,340,093,895	\$142,571,582
83860	American Home Life Ins Co	\$1,793,110	0.03%	\$16,791,638	\$16,287,868	\$503,770
93262	Penn Ins & Ann Co	\$1,759,146	0.03%	\$1,592,931,093	\$1,461,694,706	\$131,236,387
77828	Companion Life Ins Co	\$1,756,003	0.03%	\$186,795,646	\$76,834,099	\$109,961,547
77879	5 Star Life Ins Co	\$1,721,419	0.03%	\$218,365,922	\$164,104,440	\$54,261,482
74780	Integrity Life Ins Co	\$1,713,082	0.03%	\$5,916,074,732	\$5,368,874,372	\$547,200,360
67199	Old America Ins Co	\$1,664,121	0.03%	\$239,020,261	\$221,574,929	\$17,445,332
61190	Auto Owners Life Ins Co	\$1,622,277	0.03%	\$3,106,658,396	\$2,849,267,312	\$257,391,084
68810	Sentry Life Ins Co	\$1,598,867	0.03%	\$3,873,509,960	\$3,598,716,953	\$274,793,007
69116	State Life Ins Co	\$1,589,109	0.03%	\$4,089,796,793	\$3,810,081,641	\$279,715,152
81779	Individual Assur Co Life Health & Accident	\$1,585,652	0.03%	\$53,587,724	\$37,840,735	\$15,746,989
71870	Fidelity Security Life Ins Co	\$1,583,986	0.03%	\$702,685,352	\$579,847,323	\$122,838,030
65412	Life Ins Co Of AL	\$1,540,349	0.03%	\$94,939,414	\$69,933,849	\$25,005,565
12747	Envision Ins Co	\$1,526,459	0.03%	\$93,237,983	\$72,485,657	\$20,752,326
64211	Guarantee Trust Life Ins Co	\$1,515,648	0.03%	\$283,684,590	\$241,626,972	\$42,057,618
69930	United Ins Co Of America	\$1,494,166	0.03%	\$3,493,325,773	\$3,012,702,067	\$480,623,706
91626	New England Life Ins Co	\$1,476,832	0.03%	\$10,142,100,990	\$9,612,689,026	\$529,411,964
66214	Heartland Natl Life Ins Co	\$1,422,011	0.02%	\$6,960,685	\$3,339,060	\$3,621,625
60801	American Public Life Ins Co	\$1,403,779	0.02%	\$74,266,508	\$55,262,777	\$19,003,731
65110	Kanawha Ins Co	\$1,389,351	0.02%	\$1,288,890,745	\$1,098,368,955	\$190,521,790
71439	Assurity Life Ins Co	\$1,386,395	0.02%	\$2,403,180,670	\$2,145,364,225	\$257,816,444
64890	Berkley Life & Health Ins Co	\$1,373,102	0.02%	\$111,975,452	\$52,504,200	\$59,471,252
83992	Foundation Life Ins Co Of AR	\$1,352,192	0.02%	\$6,236,404	\$4,491,350	\$1,745,054
91529	Unimerica Ins Co	\$1,351,676	0.02%	\$289,006,509	\$159,115,522	\$129,890,987
66370	Mony Life Ins Co	\$1,334,697	0.02%	\$8,505,728,287	\$8,065,546,046	\$440,182,241
63967	Government Personnel Mutual Life Ins Co	\$1,318,494	0.02%	\$834,126,228	\$737,131,448	\$96,994,780
63444	Accendo Ins Co	\$1,307,156	0.02%	\$146,571,557	\$65,173,946	\$81,397,611
63053	Family Life Ins Co	\$1,299,859	0.02%	\$126,407,041	\$96,900,191	\$29,506,850
64513	Horace Mann Life Ins Co	\$1,296,425	0.02%	\$5,817,233,561	\$5,477,551,757	\$339,681,804
97136	Metropolitan Tower Life Ins Co	\$1,286,472	0.02%	\$5,041,738,497	\$4,213,245,345	\$828,493,152
68845	Shenandoah Life Ins Co	\$1,240,395	0.02%	\$1,432,126,756	\$1,416,501,814	\$15,624,942
93696	Fidelity Investments Life Ins Co	\$1,197,644	0.02%	\$16,892,468,808	\$16,125,563,122	\$766,905,685
69078	Standard Security Life Ins Co Of NY	\$1,191,108	0.02%	\$371,621,645	\$265,140,218	\$106,481,427

Life and Health (Cont.)

NAIC	Company Name	AR Premium	Market Share	Assets	Liabilities	Capital & Surplus
78077	Mony Life Ins Co Of America	\$1,177,470	0.02%	\$3,830,936,190	\$3,606,452,422	\$224,483,768
31119	Medico Ins Co	\$1,145,634	0.02%	\$91,002,577	\$69,963,177	\$21,039,400
86118	Arkansas Bankers Life Ins Co	\$1,117,601	0.02%	\$4,001,160	\$1,971,079	\$2,030,081
89184	Sterling Investors Life Ins Co	\$1,112,477	0.02%	\$18,026,871	\$10,632,506	\$7,394,365
71854	AAA Life Ins Co	\$1,072,126	0.02%	\$468,390,751	\$380,558,853	\$87,831,898
92703	United Natl Life Ins Co Of America	\$1,050,470	0.02%	\$9,126,953	\$6,319,608	\$2,807,345
62324	Freedom Life Ins Co Of America	\$1,050,007	0.02%	\$34,353,061	\$20,492,341	\$13,860,720
65722	Loyal America Life Ins Co	\$1,027,927	0.02%	\$438,927,645	\$398,120,312	\$40,807,333
67652	First Penn Pacific Life Ins Co	\$1,022,617	0.02%	\$1,880,368,261	\$1,670,664,783	\$209,703,478
76023	Columbian Life Ins Co	\$1,016,523	0.02%	\$266,314,539	\$241,537,804	\$24,776,735
70629	World Ins Co	\$1,000,312	0.02%	\$275,408,951	\$171,881,571	\$103,527,380
71161	Principal Natl Life Ins Co	\$996,888	0.02%	\$65,148,473	\$7,034,659	\$58,113,814
60836	American Republic Ins Co	\$977,426	0.02%	\$538,648,651	\$279,349,000	\$259,299,651
69485	Security Natl Life Ins Co	\$973,192	0.02%	\$422,702,391	\$398,445,117	\$24,257,274
93629	Prudential Retirement Ins & Ann Co	\$951,949	0.02%	\$63,442,946,150	\$62,363,568,736	\$1,079,377,414
86355	Standard Life & Accident Ins Co	\$943,740	0.02%	\$515,062,144	\$279,562,651	\$235,499,493
61751	Central States H & L Co Of Omaha	\$931,227	0.02%	\$343,792,438	\$239,274,879	\$104,517,559
67393	Ozark Natl Life Ins Co	\$928,309	0.02%	\$690,606,966	\$571,859,047	\$118,747,919
70548	Wichita Natl Life Ins Co	\$926,040	0.02%	\$18,458,535	\$10,522,803	\$7,935,732
76325	Senior Health Ins Co of PA	\$910,421	0.02%	\$3,161,093,979	\$3,046,696,672	\$114,397,307
71390	Puritan Life Ins Co of America	\$876,484	0.02%	\$13,298,403	\$7,065,036	\$6,233,367
60763	American Pioneer Life Ins Co	\$857,732	0.02%	\$80,645,934	\$60,069,482	\$20,576,452
67180	Ohio State Life Ins Co	\$853,401	0.01%	\$12,252,078	\$2,676,460	\$9,575,618
84115	Jackson Griffin Ins Co	\$849,377	0.01%	\$10,506,087	\$9,803,871	\$702,216
61832	Chesapeake Life Ins Co	\$835,843	0.01%	\$46,967,302	\$11,243,857	\$35,723,445
93432	CM Life Ins Co	\$810,397	0.01%	\$8,388,465,820	\$7,458,476,312	\$929,989,508
91413	Western Reserve Life Assur Co of OH	\$786,317	0.01%	\$8,423,143,363	\$8,147,945,340	\$275,198,023
66087	Mid West Natl Life Ins Co Of TN	\$784,871	0.01%	\$137,807,523	\$64,084,576	\$73,722,947
81043	Bankers Life Ins Co	\$784,223	0.01%	\$94,384,095	\$77,899,196	\$16,484,899
67326	Old Surety Life Ins Co	\$782,643	0.01%	\$21,345,950	\$12,184,016	\$9,161,934
62359	Constitution Life Ins Co	\$776,816	0.01%	\$56,678,460	\$29,617,125	\$27,061,335
73474	Dentegra Ins Co	\$775,149	0.01%	\$30,283,435	\$14,525,053	\$15,758,382
83798	Memorial Ins Co Of America	\$774,495	0.01%	\$1,186,696	\$102,061	\$1,084,635
71129	Fort Dearborn Life Ins Co	\$759,100	0.01%	\$2,895,769,319	\$2,496,027,452	\$399,741,867
65781	Madison Natl Life Ins Co Inc	\$740,215	0.01%	\$686,674,688	\$616,408,261	\$70,266,427
68985	Starmount Life Ins Co	\$726,182	0.01%	\$42,002,715	\$23,660,216	\$18,342,499
70580	Humanadental Ins Co	\$724,484	0.01%	\$109,005,261	\$49,462,976	\$59,542,285
63290	Fidelity Life Assn A Legal Reserve L	\$717,672	0.01%	\$463,738,455	\$288,429,731	\$175,308,724
84786	Colorado Bankers Life Ins Co	\$713,039	0.01%	\$202,282,496	\$185,360,861	\$16,921,635
76694	London Life Reins Co	\$703,318	0.01%	\$464,407,085	\$394,548,044	\$69,859,041
12784	Bravo Health Ins Co Inc	\$693,645	0.01%	\$148,521,060	\$55,506,596	\$93,014,464
60275	American Bankers Life Assur Co Of FL	\$674,322	0.01%	\$588,079,222	\$514,312,410	\$73,766,812
69914	Sears Life Ins Co	\$646,535	0.01%	\$95,428,265	\$24,392,703	\$71,035,562
97705	Direct General Life Ins Co	\$639,687	0.01%	\$22,963,678	\$9,573,088	\$13,390,590
65811	American Modern Life Ins Co	\$638,266	0.01%	\$59,985,286	\$39,628,961	\$20,356,325
61360	Reliastar Life Ins Co Of NY	\$628,084	0.01%	\$3,307,900,098	\$3,026,375,007	\$281,525,091
61212	Baltimore Life Ins Co	\$627,105	0.01%	\$944,325,648	\$878,934,974	\$65,390,674
71471	Ability Ins Co	\$609,091	0.01%	\$840,080,873	\$792,886,448	\$47,194,426
64505	Homesteaders Life Co	\$601,629	0.01%	\$2,093,306,012	\$1,973,613,528	\$119,692,483
81418	American Medical & Life Ins Co	\$597,209	0.01%	\$23,827,378	\$15,421,135	\$8,406,243
80799	Celtic Ins Co	\$569,434	0.01%	\$68,760,964	\$43,260,211	\$25,500,753
60445	Sagcor Life Ins Co	\$562,442	0.01%	\$870,041,040	\$817,260,581	\$52,780,459
60542	American Home Life Ins Co	\$549,792	0.01%	\$216,919,637	\$200,235,101	\$16,684,536
90557	Zurich America Life Ins Co	\$546,156	0.01%	\$12,697,091,607	\$12,528,733,149	\$168,358,458

Life and Health (Cont.)

NAIC	Company Name	AR Premium	Market Share	Assets	Liabilities	Capital & Surplus
90212	Great Southern Life Ins Co	\$541,533	0.01%	\$242,888,218	\$205,789,774	\$37,098,444
67369	Cigna Health & Life Ins Co	\$534,679	0.01%	\$713,420,136	\$169,988,956	\$543,431,180
69744	Union Labor Life Ins Co	\$524,354	0.01%	\$3,495,047,358	\$3,404,028,043	\$91,019,315
71773	American Natl Life Ins Co Of TX	\$511,647	0.01%	\$115,148,775	\$87,626,053	\$27,522,722
71072	Marquette Natl Life Ins Co	\$507,809	0.01%	\$6,257,811	\$1,112,760	\$5,145,051
93661	Annuity Investors Life Ins Co	\$501,388	0.01%	\$2,520,593,610	\$2,363,236,000	\$157,357,610
68500	Continental Life Ins Co Brentwood	\$479,275	0.01%	\$144,284,427	\$90,115,747	\$54,168,680
66842	American General Life Ins Co of DE	\$467,998	0.01%	\$9,146,118,352	\$8,695,492,913	\$450,625,439
90247	Pharmacists Life Ins Co	\$463,201	0.01%	\$66,823,483	\$60,572,983	\$6,250,500
94099	United Investors Life Ins Co	\$457,655	0.01%	\$1,495,159,690	\$1,286,851,032	\$208,308,658
84069	Smith Burial & Life Ins Co	\$439,891	0.01%	\$4,892,159	\$4,148,994	\$743,165
85928	Family Liberty Life Ins Co	\$436,900	0.01%	\$27,045,923	\$21,779,892	\$5,266,031
81353	NYLife Ins Co Of AZ	\$430,794	0.01%	\$199,662,260	\$140,122,993	\$59,539,267
69132	State Mutual Ins Co	\$425,486	0.01%	\$304,637,836	\$271,916,244	\$32,721,592
64580	Illinois Mutual Life Ins Co	\$412,588	0.01%	\$1,227,876,995	\$1,112,268,077	\$115,608,918
71404	Continental General Ins Co	\$407,683	0.01%	\$234,136,142	\$207,770,681	\$26,365,461
68594	American Amicable Life Ins Co Of TX	\$405,600	0.01%	\$446,356,544	\$388,922,429	\$57,434,115
62553	Country Life Ins Co	\$394,708	0.01%	\$8,947,433,239	\$7,946,575,524	\$1,000,857,716
63657	Garden State Life Ins Co	\$387,251	0.01%	\$115,154,551	\$73,621,452	\$41,533,099
64327	Harleysville Life Ins Co	\$378,158	0.01%	\$392,433,906	\$372,079,559	\$20,354,347
83933	Cooperative Life Ins Co	\$372,995	0.01%	\$6,385,378	\$4,288,564	\$2,096,814
93777	Household Life Ins Co	\$364,731	0.01%	\$707,100,022	\$350,265,372	\$356,834,650
62596	Union Fidelity Life Ins Co	\$356,329	0.01%	\$19,089,482,835	\$18,644,235,078	\$445,247,757
68373	American General Assur Co	\$343,257	0.01%	\$180,442,990	\$77,941,094	\$102,501,896
63487	Investors Life Ins Co N America	\$334,719	0.01%	\$705,836,167	\$661,787,336	\$44,048,831
66680	National Life Ins Co	\$332,838	0.01%	\$8,774,642,391	\$7,631,983,037	\$1,142,659,354
68047	Professional Ins Co	\$332,227	0.01%	\$104,473,521	\$83,626,987	\$20,846,534
62413	Continental Assur Co	\$321,246	0.01%	\$3,209,999,606	\$2,690,572,709	\$519,426,897
11121	Unified Life Ins Co	\$312,103	0.01%	\$150,131,277	\$130,252,502	\$19,878,775
69515	Medamerica Ins Co	\$302,854	0.01%	\$678,043,560	\$644,238,693	\$33,804,867
63819	Unity Financial Life Ins Co	\$299,948	0.01%	\$126,534,859	\$115,749,696	\$10,785,163
64238	Guaranty Income Life Ins Co	\$285,608	0.01%	\$488,913,507	\$466,990,151	\$21,923,356
67784	Philadelphia America Life Ins Co	\$281,152	0.00%	\$194,773,736	\$170,261,243	\$24,512,493
61875	Church Life Ins Corp	\$280,487	0.00%	\$254,640,190	\$216,171,752	\$38,468,438
69256	Sunamerica Life Ins Co	\$275,163	0.00%	\$13,825,380,075	\$10,918,137,667	\$2,907,242,408
69310	Surety Life Ins Co	\$274,508	0.00%	\$12,992,531	\$601,745	\$12,390,786
74799	Leaders Life Ins Co	\$271,063	0.00%	\$6,106,171	\$2,893,400	\$3,212,771
69701	Union Bankers Ins Co	\$270,686	0.00%	\$304,856,527	\$270,303,983	\$34,552,544
64939	Investors Ins Corp	\$267,760	0.00%	\$251,715,230	\$215,377,597	\$36,337,634
70435	The Savings Bank Life Ins Co Of MA	\$262,678	0.00%	\$2,395,971,590	\$2,202,463,538	\$193,508,052
61409	National Benefit Life Ins Co	\$262,010	0.00%	\$498,599,184	\$324,920,348	\$173,678,836
69922	United Home Life Ins Co	\$250,848	0.00%	\$67,044,826	\$49,911,523	\$17,133,304
67083	Manhattan Natl Life Ins Co	\$248,651	0.00%	\$197,176,138	\$186,905,201	\$10,270,937
80020	Mountain Life Ins Co	\$246,445	0.00%	\$13,084,795	\$7,249,561	\$5,835,234
61735	Central Security Life Ins Co	\$232,429	0.00%	\$78,497,213	\$70,071,165	\$8,426,048
67261	Old Republic Life Ins Co	\$214,788	0.00%	\$142,343,038	\$101,354,312	\$40,988,726
87645	United Fidelity Life Ins Co	\$204,078	0.00%	\$717,382,881	\$340,511,879	\$376,871,002
61700	Renaissance Life & Health Ins Co of Am	\$203,771	0.00%	\$49,943,679	\$16,746,669	\$33,197,010
82252	Landmark Life Ins Co	\$203,710	0.00%	\$76,702,946	\$73,279,158	\$3,423,788
93459	Pan America Assur Co	\$202,420	0.00%	\$20,953,362	\$5,018,871	\$15,934,492
73660	Directors Life Assur Co	\$199,331	0.00%	\$26,227,996	\$24,113,526	\$2,114,469
99937	Columbus Life Ins Co	\$198,439	0.00%	\$2,958,658,421	\$2,752,418,745	\$206,239,676
93440	HM Life Ins Co	\$193,773	0.00%	\$471,644,661	\$252,146,584	\$219,498,077
80675	US Business of Crown Life Ins Co	\$191,341	0.00%	\$296,838,571	\$262,554,847	\$34,283,724

Life and Health (Cont.)

NAIC	Company Name	AR Premium	Market Share	Assets	Liabilities	Capital & Surplus
74918	Kilpatrick Life Ins Co	\$186,731	0.00%	\$170,868,744	\$163,372,185	\$7,496,559
68721	Security Life Ins Co Of America	\$184,159	0.00%	\$85,156,007	\$64,718,270	\$20,437,737
79057	Southland Natl Ins Corp	\$178,717	0.00%	\$187,610,033	\$176,763,406	\$10,846,626
68160	Balboa Life Ins Co	\$177,767	0.00%	\$53,045,637	\$13,121,918	\$39,923,719
70483	Western & Southern Life Ins Co	\$169,269	0.00%	\$8,316,245,715	\$4,761,689,451	\$3,554,556,264
67628	Pekin Life Ins Co	\$169,014	0.00%	\$1,124,163,739	\$1,006,253,230	\$117,910,510
99775	Funeral Directors Life Ins Co	\$167,241	0.00%	\$799,034,235	\$726,087,032	\$72,947,203
67873	Pioneer America Ins Co	\$153,080	0.00%	\$58,299,884	\$53,147,214	\$5,152,670
61859	Christian Fidelity Life Ins Co	\$152,594	0.00%	\$85,340,012	\$49,140,403	\$36,199,609
79022	Transamerica Advisors Life Ins Co	\$150,650	0.00%	\$10,050,750,073	\$9,612,703,534	\$438,046,539
67148	Occidental Life Ins Co Of NC	\$147,465	0.00%	\$259,569,860	\$237,553,339	\$22,016,521
61239	Bankers Fidelity Life Ins Co	\$146,631	0.00%	\$122,086,746	\$89,999,800	\$32,086,946
61182	Aurora Natl Life Assur Co	\$143,950	0.00%	\$2,818,709,621	\$2,462,829,269	\$355,880,352
80659	US Business of Canada Life Assur Co	\$124,172	0.00%	\$4,340,936,804	\$4,167,272,543	\$173,664,261
69973	United Life Ins Co	\$121,680	0.00%	\$1,651,116,604	\$1,483,942,710	\$167,173,894
78662	Senior Life Ins Co	\$119,760	0.00%	\$39,499,311	\$30,165,425	\$9,333,886
80705	US Br Great West Life Assur Co	\$116,917	0.00%	\$99,121,290	\$74,011,122	\$25,110,168
66265	Monarch Life Ins Co	\$107,429	0.00%	\$771,852,197	\$766,677,704	\$5,174,492
61727	Central Reserve Life Ins Co	\$106,702	0.00%	\$29,806,463	\$9,184,198	\$20,622,265
85766	United Concordia Ins Co	\$106,043	0.00%	\$51,516,429	\$21,868,287	\$29,648,142
84018	Fidelity Standard Life Ins Co	\$102,583	0.00%	\$958,405	\$509,775	\$448,630
61581	Capitol Life Ins Co	\$101,977	0.00%	\$237,065,030	\$219,253,787	\$17,811,243
70122	Universal Fidelity Life Ins Co	\$99,530	0.00%	\$10,549,988	\$7,488,017	\$3,061,971
60025	Express Scripts Ins Co	\$98,621	0.00%	\$31,820,437	\$13,655,409	\$18,165,028
93734	Phoenix Life & Ann Co	\$94,278	0.00%	\$51,120,638	\$27,559,370	\$23,561,268
64904	Investors Heritage Life Ins Co	\$89,300	0.00%	\$454,142,220	\$434,603,986	\$19,538,234
62880	AXA Equitable Life & Ann Co	\$87,873	0.00%	\$521,701,180	\$459,148,905	\$62,552,275
60291	American Capitol Ins Co	\$86,927	0.00%	\$68,513,015	\$59,387,207	\$9,125,808
77720	LifeSecure Ins Co	\$86,337	0.00%	\$148,262,164	\$122,297,008	\$25,965,156
70130	Universal Guaranty Life Ins Co	\$82,050	0.00%	\$263,176,746	\$230,009,524	\$33,167,222
72222	Amica Life Ins Co	\$81,764	0.00%	\$1,067,015,637	\$870,007,753	\$197,007,884
71463	CICA Life Ins Co of America	\$75,293	0.00%	\$568,634,304	\$510,656,248	\$57,978,057
88536	Protective Life & Annuity Ins Co	\$74,870	0.00%	\$1,278,188,125	\$1,183,835,792	\$94,352,333
70173	Universal Underwriters Life Ins Co	\$74,859	0.00%	\$147,985,002	\$131,348,568	\$16,636,434
84042	Higginbotham Burial Ins Co	\$74,846	0.00%	\$1,430,350	\$1,215,708	\$214,642
80985	4 Ever Life Ins Co	\$72,877	0.00%	\$174,576,127	\$94,900,081	\$79,676,046
68772	Security Mutual Life Ins Co Of NY	\$72,052	0.00%	\$2,557,465,112	\$2,437,045,278	\$120,419,834
81213	American Maturity Life Ins Co	\$69,753	0.00%	\$63,502,183	\$17,481,963	\$46,020,220
68039	Presidential Life Ins Co	\$69,339	0.00%	\$3,561,218,227	\$3,215,794,789	\$345,423,438
69272	Sunset Life Ins Co Of America	\$62,808	0.00%	\$379,164,466	\$345,420,161	\$33,744,305
76503	Port O Call Life Ins Co	\$61,532	0.00%	\$1,656,337	\$172,941	\$1,483,396
69566	Trans World Assur Co	\$56,764	0.00%	\$345,130,477	\$273,088,004	\$72,042,473
70416	MML Bay State Life Ins Co	\$55,292	0.00%	\$4,411,372,242	\$4,234,914,987	\$176,457,255
71323	Zale Life Ins Co	\$53,070	0.00%	\$10,736,612	\$2,130,706	\$8,605,906
60704	Wilton Reassur Life Co of NY	\$51,824	0.00%	\$1,195,088,750	\$1,108,069,830	\$87,018,920
67946	Pioneer Security Life Ins Co	\$49,815	0.00%	\$84,261,565	\$21,628,814	\$62,632,751
94218	Country Investors Life Assur Co	\$47,344	0.00%	\$248,250,179	\$83,540,237	\$164,709,942
82082	Citizens Natl Life Ins Co	\$44,247	0.00%	\$13,111,266	\$9,766,036	\$3,345,230
93610	John Hancock Life & Health Ins Co	\$41,464	0.00%	\$8,947,399,835	\$8,349,512,336	\$597,887,499
66540	National Farmers Union Life Ins Co	\$40,802	0.00%	\$236,839,943	\$192,666,442	\$44,173,501
67911	Pioneer Mutual Life Ins Co	\$39,767	0.00%	\$486,846,463	\$447,607,302	\$39,239,161
61395	Beneficial Life Ins Co	\$38,488	0.00%	\$3,185,118,765	\$2,673,905,541	\$511,213,224
60429	American Fidelity Life Ins Co	\$38,046	0.00%	\$455,880,887	\$385,613,641	\$70,267,246
93742	Securian Life Ins Co	\$35,595	0.00%	\$167,568,773	\$33,371,222	\$134,197,551

Life and Health (Cont.)

NAIC	Company Name	AR Premium	Market Share	Assets	Liabilities	Capital & Surplus
67601	Paul Revere Variable Ann Ins Co	\$35,151	0.00%	\$55,836,497	\$18,934,920	\$36,901,577
80896	Centre Life Ins Co	\$34,546	0.00%	\$1,811,618,202	\$1,711,159,699	\$100,458,503
68632	Vantis Life Ins Co	\$33,709	0.00%	\$903,009,383	\$832,551,245	\$70,458,138
60518	American Health & Life Ins Co	\$33,641	0.00%	\$1,153,180,716	\$781,472,010	\$371,708,706
61069	Anthem Life Ins Co	\$28,623	0.00%	\$542,738,372	\$464,986,617	\$77,751,755
83984	New Found Life Ins Co	\$27,697	0.00%	\$2,046,544	\$364,208	\$1,682,336
62103	Columbian Mutual Life Ins Co	\$26,775	0.00%	\$1,230,434,446	\$1,141,944,169	\$88,490,277
69140	First Allmerica Fin Life Ins Co	\$26,605	0.00%	\$1,276,361,222	\$1,190,422,598	\$85,938,624
94447	Century Life Ass Co	\$25,200	0.00%	\$11,462,155	\$5,492,216	\$5,969,939
68209	Provident Life & Casualty Ins Co	\$24,291	0.00%	\$768,323,597	\$626,372,467	\$141,951,131
76007	Old United Life Ins Co	\$23,544	0.00%	\$76,155,655	\$32,558,738	\$43,596,917
97764	Idealife Ins Co	\$22,338	0.00%	\$19,603,229	\$5,362,031	\$14,241,198
42129	United Security Assur Co Of PA	\$21,623	0.00%	\$122,197,374	\$102,554,166	\$19,643,208
65870	Manhattan Life Ins Co	\$21,417	0.00%	\$330,902,828	\$290,595,747	\$40,307,081
84522	Auto Club Life Ins Co	\$21,226	0.00%	\$452,995,227	\$384,647,712	\$68,347,515
60250	AmFirst Ins Co	\$20,029	0.00%	\$19,538,404	\$6,227,011	\$13,311,393
69779	Union Natl Life Ins Co	\$19,800	0.00%	\$17,395,214	\$4,270,129	\$13,125,085
66109	Midwestern United Life Ins Co	\$18,489	0.00%	\$242,704,450	\$127,183,966	\$115,520,484
97721	Thrivent Life Ins Co	\$16,200	0.00%	\$3,132,303,609	\$2,962,846,320	\$169,457,288
63223	Federal Life Ins Co	\$15,206	0.00%	\$218,879,215	\$198,416,807	\$20,462,408
97241	Settlers Life Ins Co	\$14,920	0.00%	\$378,336,654	\$322,731,781	\$55,604,873
86959	National Family Care Life Ins Co	\$14,737	0.00%	\$15,738,195	\$6,871,595	\$8,866,599
84514	Industrial Alliance Pacific Ins & Financial Svs	\$10,843	0.00%	\$630,661,467	\$597,983,142	\$32,678,326
67903	Provident America Life & Health Ins Co	\$10,271	0.00%	\$21,141,002	\$5,503,496	\$15,637,506
60003	Park Avenue Life Ins Co	\$9,476	0.00%	\$306,982,567	\$251,559,079	\$55,423,489
84107	Griffin Leggett Burial Ins Co	\$8,986	0.00%	\$127,615	\$1,030	\$126,585
63495	First Investors Life Ins Co	\$8,877	0.00%	\$1,192,158,160	\$1,155,621,026	\$36,537,134
62057	Lincoln Life & Ann Co of NY	\$8,066	0.00%	\$10,159,964,092	\$9,573,874,151	\$586,089,941
81442	Monitor Life Ins Co Of NY	\$8,007	0.00%	\$11,799,119	\$5,639,614	\$6,159,505
65951	Merit Life Ins Co	\$7,308	0.00%	\$630,437,682	\$295,643,432	\$334,794,250
72613	USAA Direct Life Ins Co	\$6,558	0.00%	\$7,413,612	\$988,260	\$6,425,352
86126	Members Life Ins Co	\$6,497	0.00%	\$58,606,315	\$30,545,294	\$28,061,021
62421	Heritage Union Life Ins Co	\$5,219	0.00%	\$8,235,010	\$15,786	\$8,219,225
68446	Longevity Ins Co	\$5,079	0.00%	\$8,373,551	\$373,664	\$7,999,887
81426	Commercial Travelers Mutual Ins Co	\$4,732	0.00%	\$27,594,947	\$24,072,019	\$3,522,928
91693	IA America Life Ins Co	\$4,695	0.00%	\$182,524,925	\$100,870,887	\$81,654,038
69647	Molina Healthcare Ins Co	\$4,331	0.00%	\$8,859,300	\$256,575	\$8,602,725
82538	National Health Ins Co	\$3,516	0.00%	\$7,727,612	\$2,717,777	\$5,009,835
90638	Best Life & Health Ins Co	\$3,299	0.00%	\$13,605,520	\$4,658,023	\$8,947,497
70955	USA Life One Ins Co Of IN	\$2,366	0.00%	\$36,867,631	\$20,310,842	\$16,556,789
77119	Sentinel America Life Ins Co	\$2,348	0.00%	\$33,625,797	\$28,925,572	\$4,700,225
71455	Financial America Life Ins Co	\$1,953	0.00%	\$50,877,979	\$34,216,153	\$16,661,826
61018	Magna Ins Co	\$1,557	0.00%	\$2,798,567	\$467,826	\$2,330,740
90581	Symetra Natl Life Ins Co	\$1,119	0.00%	\$16,370,117	\$6,919,886	\$9,450,231
79049	Alfa Life Ins Corp	\$1,079	0.00%	\$1,218,639,896	\$1,030,612,028	\$188,027,868
84077	Southern Fidelity Life Ins Co	\$792	0.00%	\$81,988	\$11,689	\$70,299
86371	Ullico Life Ins Co	\$705	0.00%	\$15,115,836	\$4,203,858	\$10,911,978
64831	Intramercia Life Ins Co	\$612	0.00%	\$30,452,945	\$21,087,095	\$9,365,849
85286	OneNation Ins Co	\$493	0.00%	\$79,557,285	\$587,844	\$78,969,441
62634	Delaware America Life Ins Co	\$484	0.00%	\$135,816,257	\$84,462,602	\$51,353,655
82880	CSI Life Ins Co	\$473	0.00%	\$16,960,994	\$3,576,809	\$13,384,185
85189	Investors Consolidated Ins Co	\$425	0.00%	\$15,541,923	\$8,256,916	\$7,285,007
70785	Pacificare Life & Health Ins Co	\$312	0.00%	\$695,348,054	\$44,712,855	\$650,635,199
71480	Great Western Ins Co	\$276	0.00%	\$492,166,846	\$451,928,442	\$40,238,404

Life and Health (Cont.)

NAIC	Company Name	AR Premium	Market Share	Assets	Liabilities	Capital & Surplus
88366	American Retirement Life Ins Co	\$181	0.00%	\$6,371,316	\$853,513	\$5,517,803
76201	American Service Life Ins Co	\$38	0.00%	\$670,057	\$14,902	\$655,155
	TOTAL	\$5,696,629,133	100.00%			

Property and Casualty

NAIC	Company Name	AR Premium	Market Share	Assets	Liabilities	Capital & Surplus
25178	State Farm Mut Auto Ins Co	\$337,499,178	8.42%	\$108,097,364,056	\$47,306,340,058	\$60,791,023,998
13757	Farm Bureau Mut Ins Co Of AR Inc	\$231,836,637	5.78%	\$271,781,838	\$168,937,039	\$102,844,799
25143	State Farm Fire & Cas Co	\$225,081,900	5.62%	\$27,243,276,598	\$19,494,591,690	\$7,748,684,908
18325	Southern Farm Bureau Cas Ins Co	\$223,637,298	5.58%	\$1,804,797,311	\$740,544,283	\$1,064,253,028
23388	Shelter Mut Ins Co	\$206,092,702	5.14%	\$2,306,530,562	\$1,025,110,439	\$1,281,420,123
21628	Farmers Ins Co Inc	\$115,218,838	2.87%	\$304,785,843	\$207,255,668	\$97,530,175
19445	National Union Fire Ins Co Of Pitts	\$101,860,814	2.54%	\$30,405,443,775	\$17,791,436,929	\$12,614,006,846
17230	Allstate Prop & Cas Ins Co	\$85,099,992	2.12%	\$199,624,720	\$5,206,770	\$194,417,950
19232	Allstate Ins Co	\$66,357,017	1.66%	\$41,023,043,030	\$25,896,376,325	\$15,126,666,705
42919	Progressive Northwestern Ins Co	\$60,406,295	1.51%	\$1,127,035,186	\$798,559,924	\$328,475,262
23787	Nationwide Mut Ins Co	\$60,312,311	1.50%	\$27,617,831,419	\$17,182,942,679	\$10,434,888,740
20443	Continental Cas Co	\$54,914,750	1.37%	\$40,560,948,066	\$30,673,367,618	\$9,887,580,448
27998	Travelers Home & Marine Ins Co	\$49,424,200	1.23%	\$392,387,241	\$283,469,642	\$108,917,600
25941	United Serv Automobile Assn	\$46,159,339	1.15%	\$23,936,143,139	\$7,018,650,358	\$16,917,492,781
10677	Cincinnati Ins Co	\$41,512,282	1.04%	\$9,501,832,509	\$5,755,051,386	\$3,746,781,123
35882	Geico Gen Ins Co	\$36,147,368	0.90%	\$180,298,873	\$74,571,589	\$105,727,283
25127	State Auto Prop & Cas Ins Co	\$35,646,410	0.89%	\$2,020,617,658	\$1,547,034,976	\$473,582,682
18988	Auto Owners Ins Co	\$29,738,350	0.74%	\$9,767,028,476	\$3,704,833,718	\$6,062,194,759
40371	Columbia Mut Ins Co	\$29,602,140	0.74%	\$359,561,910	\$200,999,316	\$158,562,594
25674	Travelers Prop Cas Co Of Amer	\$28,393,842	0.71%	\$792,229,785	\$358,499,485	\$433,730,300
19720	American Alt Ins Corp	\$27,426,443	0.68%	\$434,550,151	\$278,325,291	\$156,224,860
23779	Nationwide Mut Fire Ins Co	\$27,302,624	0.68%	\$4,553,400,810	\$2,310,246,490	\$2,243,154,320
16535	Zurich Amer Ins Co	\$27,165,091	0.68%	\$28,729,165,335	\$21,710,385,928	\$7,018,779,407
23043	Liberty Mut Ins Co	\$23,901,132	0.60%	\$37,394,843,149	\$23,798,408,089	\$13,596,435,060
25968	USAA Cas Ins Co	\$23,863,685	0.60%	\$7,294,937,841	\$3,724,147,705	\$3,570,790,135
22055	Geico Ind Co	\$23,760,250	0.59%	\$5,845,361,830	\$3,747,707,862	\$2,097,653,968
23035	Liberty Mut Fire Ins Co	\$23,275,292	0.58%	\$4,876,778,437	\$3,803,735,781	\$1,073,042,656
21873	Firemans Fund Ins Co	\$23,063,927	0.58%	\$9,922,838,460	\$6,936,984,937	\$2,985,853,523
21482	Factory Mut Ins Co	\$22,805,633	0.57%	\$10,978,403,000	\$4,546,791,476	\$6,431,611,524
19380	American Home Assur Co	\$22,503,823	0.56%	\$23,900,272,356	\$18,232,968,781	\$5,667,303,575
39012	Safeco Ins Co Of IL	\$22,045,022	0.55%	\$705,419,822	\$465,830,575	\$239,589,247
16322	Progressive Direct Ins Co	\$21,762,641	0.54%	\$4,185,596,213	\$2,913,204,965	\$1,272,391,248
16691	Great Amer Ins Co	\$21,687,632	0.54%	\$5,273,621,832	\$3,862,328,713	\$1,411,293,119
22667	Ace Amer Ins Co	\$21,089,163	0.53%	\$10,093,298,941	\$8,093,057,218	\$2,000,241,723
33049	State Volunteer Mut Ins Co	\$20,990,675	0.52%	\$1,148,088,436	\$711,663,987	\$436,424,449
15512	Automobile Club Interins Exch	\$20,902,899	0.52%	\$386,714,305	\$211,304,953	\$175,409,352
20281	Federal Ins Co	\$20,669,518	0.52%	\$30,726,611,743	\$17,019,066,104	\$13,707,545,639
25135	State Automobile Mut Ins Co	\$20,364,419	0.51%	\$2,156,907,267	\$1,371,413,662	\$785,493,605
11185	Foremost Ins Co Grand Rapids MI	\$20,309,008	0.51%	\$1,691,560,299	\$743,164,319	\$948,395,980
19240	Allstate Ind Co	\$19,587,311	0.49%	\$150,894,843	\$3,430,901	\$147,463,942
12188	Alfa Vision Ins Corp	\$18,825,076	0.47%	\$84,533,769	\$43,711,653	\$40,822,116
12548	American Agri Business Ins Co	\$18,673,415	0.47%	\$773,617,927	\$751,159,426	\$22,458,501

Property and Casualty (Cont.)

NAIC	Company Name	AR Premium	Market Share	Assets	Liabilities	Capital & Surplus
25658	Travelers Ind Co	\$18,441,799	0.46%	\$20,948,653,374	\$13,973,387,175	\$6,975,266,199
20699	Ace Prop & Cas Ins Co	\$18,190,027	0.45%	\$6,425,044,032	\$4,804,225,099	\$1,620,818,933
36781	John Deere Ins Co	\$18,084,344	0.45%	\$304,387,485	\$233,730,269	\$70,657,216
11770	United Financial Cas Co	\$17,881,150	0.45%	\$1,630,419,943	\$1,240,154,330	\$390,265,613
41840	Allmerica Fin Benefit Ins Co	\$17,106,340	0.43%	\$27,004,542	\$81,683	\$26,922,859
23469	American Modern Home Ins Co	\$16,276,901	0.41%	\$1,097,141,377	\$739,496,006	\$357,645,371
21415	Employers Mut Cas Co	\$16,059,258	0.40%	\$2,200,535,855	\$1,308,093,473	\$892,442,382
18058	Philadelphia Ind Ins Co	\$15,372,691	0.38%	\$5,462,757,389	\$3,595,752,568	\$1,867,004,821
22063	Government Employees Ins Co	\$15,348,078	0.38%	\$16,974,938,226	\$10,842,645,624	\$6,132,292,603
31194	Travelers Cas & Surety Co Of Amer	\$15,341,424	0.38%	\$4,256,447,550	\$2,604,372,282	\$1,652,075,268
10642	Cherokee Ins Co	\$15,330,245	0.38%	\$284,756,445	\$159,404,769	\$125,351,676
34312	Producers Agriculture Ins Co	\$14,937,988	0.37%	\$216,180,287	\$164,338,570	\$51,841,717
24740	Safeco Ins Co Of Amer	\$14,888,462	0.37%	\$3,854,156,105	\$2,983,350,470	\$870,805,635
25704	Pride National Ins Co	\$14,785,310	0.37%	\$27,478,091	\$23,102,402	\$4,375,691
40649	Economy Premier Assur Co	\$14,648,068	0.37%	\$88,238,522	\$47,583,965	\$40,654,557
20095	Bituminous Cas Corp	\$13,970,984	0.35%	\$721,373,321	\$470,758,665	\$250,614,656
37478	Hartford Ins Co Of The Midwest	\$13,889,894	0.35%	\$451,522,608	\$121,517,424	\$330,005,185
34690	Property & Cas Ins Co Of Hartford	\$13,820,440	0.34%	\$218,411,064	\$116,662,406	\$101,748,659
15725	Cameron Mut Ins Co	\$13,421,219	0.33%	\$74,902,783	\$48,796,993	\$26,105,790
13935	Federated Mut Ins Co	\$13,380,965	0.33%	\$4,075,135,217	\$1,837,920,370	\$2,237,214,847
22292	Hanover Ins Co	\$12,829,666	0.32%	\$5,288,585,697	\$3,710,310,390	\$1,578,275,307
28401	American Natl Prop & Cas Co	\$12,806,116	0.32%	\$1,019,204,620	\$635,605,388	\$383,599,232
21407	Emcasco Ins Co	\$12,783,754	0.32%	\$363,017,856	\$271,877,840	\$91,140,016
27626	Firstcomp Ins Co	\$12,386,755	0.31%	\$291,218,585	\$207,377,326	\$83,841,259
13412	Austin Mut Ins Co	\$12,163,974	0.30%	\$122,929,952	\$102,232,470	\$20,697,482
23450	American Family Home Ins Co	\$11,350,185	0.28%	\$516,915,126	\$359,463,399	\$157,451,727
23736	Direct Natl Ins Co	\$11,328,603	0.28%	\$18,779,863	\$11,458,379	\$7,321,484
13528	Brotherhood Mut Ins Co	\$11,231,356	0.28%	\$347,431,725	\$201,314,868	\$146,116,857
28452	Republic Mortgage Ins Co	\$11,024,154	0.28%	\$1,397,247,098	\$1,356,651,515	\$40,595,583
21652	Farmers Ins Exch	\$10,667,886	0.27%	\$15,237,358,460	\$11,417,137,118	\$3,820,221,342
13021	United Fire & Cas Co	\$10,332,439	0.26%	\$1,309,665,460	\$743,822,452	\$565,843,008
11371	Great West Cas Co	\$10,223,887	0.26%	\$1,571,228,837	\$1,063,872,120	\$507,356,717
27120	Trumbull Ins Co	\$10,221,095	0.26%	\$211,480,460	\$124,929,601	\$86,550,860
26298	Metropolitan Prop & Cas Ins Co	\$10,167,744	0.25%	\$4,967,373,706	\$3,110,048,681	\$1,857,325,025
19410	Commerce & Industry Ins Co	\$9,994,703	0.25%	\$7,203,882,465	\$5,359,822,975	\$1,844,059,489
42978	American Security Ins Co	\$9,932,288	0.25%	\$1,730,364,140	\$1,095,785,210	\$634,578,930
18600	USAA Gen Ind Co	\$9,716,789	0.24%	\$1,099,552,951	\$698,238,138	\$401,314,813
25844	Union Ins Co	\$9,605,939	0.24%	\$89,664,806	\$60,964,990	\$28,699,816
10335	Bridgefield Cas Ins Co	\$9,539,319	0.24%	\$77,290,537	\$31,839,954	\$45,450,583
24538	Republic Underwriters Ins Co	\$9,496,575	0.24%	\$670,983,253	\$451,857,036	\$219,126,217
18767	Church Mut Ins Co	\$9,399,165	0.23%	\$1,176,689,374	\$800,446,925	\$376,242,448
23841	New Hampshire Ins Co	\$9,267,105	0.23%	\$3,162,435,745	\$2,353,575,153	\$808,860,592
21687	Mid Century Ins Co	\$9,263,926	0.23%	\$3,749,790,192	\$2,926,438,619	\$823,351,572
19070	Standard Fire Ins Co	\$9,211,463	0.23%	\$3,374,009,131	\$2,364,142,888	\$1,009,866,243
36064	Hanover Amer Ins Co	\$8,841,282	0.22%	\$27,137,824	\$105,966	\$27,031,858
31895	American Interstate Ins Co	\$8,569,659	0.21%	\$922,556,473	\$608,159,609	\$314,396,864
25615	Charter Oak Fire Ins Co	\$8,345,136	0.21%	\$877,514,534	\$655,875,104	\$221,639,430
10251	American Underwriters Ins Co	\$8,004,080	0.20%	\$7,325,672	\$1,898,342	\$5,427,330
20508	Valley Forge Ins Co	\$7,946,399	0.20%	\$71,230,793	\$43,905	\$71,186,888
33600	LM Ins Corp	\$7,935,055	0.20%	\$230,314,865	\$79,129,378	\$151,185,487
11150	Arch Ins Co	\$7,919,526	0.20%	\$2,213,086,884	\$1,643,350,677	\$569,736,207
11000	Sentinel Ins Co Ltd	\$7,775,964	0.19%	\$198,434,748	\$69,879,724	\$128,555,024
40142	American Zurich Ins Co	\$7,677,001	0.19%	\$177,063,569	\$34,379,626	\$142,683,943
33383	First Professionals Ins Co	\$7,607,039	0.19%	\$569,305,795	\$355,786,144	\$213,519,651

Property and Casualty (Cont.)

NAIC	Company Name	AR Premium	Market Share	Assets	Liabilities	Capital & Surplus
37257	Praetorian Ins Co	\$7,589,687	0.19%	\$991,832,943	\$645,523,175	\$346,309,768
19216	Southern Ins Co	\$7,573,461	0.19%	\$55,682,285	\$24,775,178	\$30,907,107
25240	NAU Country Ins Co	\$7,546,923	0.19%	\$1,345,951,139	\$966,147,482	\$379,803,657
17647	United Home Ins Co	\$7,531,111	0.19%	\$10,366,855	\$6,662,684	\$3,704,171
37273	Axis Ins Co	\$7,262,530	0.18%	\$1,043,996,929	\$514,704,575	\$529,292,354
31325	Acadia Ins Co	\$7,228,960	0.18%	\$124,938,027	\$72,171,901	\$52,766,122
10111	American Bankers Ins Co Of FL	\$7,182,976	0.18%	\$1,378,659,809	\$973,943,455	\$404,716,354
13897	Farmers Mut Hail Ins Co Of IA	\$7,155,755	0.18%	\$679,367,881	\$319,364,981	\$360,002,900
21709	Truck Ins Exch	\$7,136,302	0.18%	\$1,976,368,787	\$1,421,872,376	\$554,496,411
23361	Shelter Gen Ins Co	\$7,072,907	0.18%	\$174,270,926	\$85,233,361	\$89,037,565
42404	Liberty Ins Corp	\$6,917,574	0.17%	\$1,428,338,741	\$1,183,332,710	\$245,006,031
27235	Auto Club Family Ins Co	\$6,873,067	0.17%	\$97,233,744	\$64,623,578	\$32,610,166
21253	Garrison Prop & Cas Ins Co	\$6,864,007	0.17%	\$972,661,323	\$609,447,704	\$363,213,619
19429	Insurance Co Of The State Of PA	\$6,692,806	0.17%	\$4,418,657,614	\$2,413,830,597	\$2,004,827,017
33391	ProAssurance Ind Co Inc	\$6,594,211	0.16%	\$1,885,716,269	\$1,172,677,204	\$713,039,065
19682	Hartford Fire In Co	\$6,564,729	0.16%	\$24,140,340,968	\$11,546,018,866	\$12,594,322,102
25623	Phoenix Ins Co	\$6,472,083	0.16%	\$3,697,122,703	\$2,402,654,693	\$1,294,468,011
29424	Hartford Cas Ins Co	\$6,327,151	0.16%	\$2,192,424,870	\$1,296,894,153	\$895,530,717
10783	Cornerstone Natl Ins Co	\$6,148,884	0.15%	\$54,727,333	\$43,575,874	\$11,151,459
10804	Continental Western Ins Co	\$6,138,629	0.15%	\$220,680,186	\$136,694,843	\$83,985,343
26247	American Guar & Liab Ins	\$6,095,038	0.15%	\$268,012,749	\$92,109,137	\$175,903,612
24015	Northland Ins Co	\$6,037,864	0.15%	\$1,157,957,046	\$622,873,829	\$535,083,217
19640	Columbia Natl Ins Co	\$6,011,400	0.15%	\$87,020,002	\$52,794,397	\$34,225,605
24147	Old Republic Ins Co	\$5,909,151	0.15%	\$2,394,059,828	\$1,534,438,484	\$859,621,344
25666	Travelers Ind Co Of Amer	\$5,824,763	0.15%	\$602,651,243	\$436,943,609	\$165,707,634
29858	Mortgage Guar Ins Corp	\$5,715,621	0.14%	\$5,528,912,276	\$3,960,130,146	\$1,568,782,130
32700	Owners Ins Co	\$5,616,450	0.14%	\$2,993,052,038	\$1,976,353,548	\$1,016,698,490
10014	Affiliated Fm Ins Co	\$5,608,170	0.14%	\$1,874,643,261	\$969,063,222	\$905,580,039
19046	Travelers Cas Ins Co Of Amer	\$5,558,859	0.14%	\$1,826,210,263	\$1,337,217,932	\$488,992,332
12810	MDOW Ins Co	\$5,533,627	0.14%	\$7,252,933	\$2,578,390	\$4,674,543
35300	Allianz Global Risks US Ins Co	\$5,533,545	0.14%	\$5,922,867,078	\$2,106,526,714	\$3,816,340,365
26042	Wausau Underwriters Ins Co	\$5,527,846	0.14%	\$284,476,242	\$183,166,765	\$101,309,477
44369	Imperial Fire & Cas Ins Co	\$5,510,334	0.14%	\$91,181,208	\$62,190,039	\$28,991,169
15873	United Guar Residential Ins Co	\$5,482,311	0.14%	\$2,502,214,335	\$1,439,754,544	\$1,062,459,791
11991	National Cas Co	\$5,392,007	0.13%	\$248,947,659	\$129,571,691	\$119,375,968
28746	Equity Ins Co	\$5,328,931	0.13%	\$73,815,255	\$44,830,109	\$28,985,146
37877	Nationwide Prop & Cas Ins Co	\$5,318,799	0.13%	\$448,880,993	\$395,464,475	\$53,416,518
29459	Twin City Fire Ins Co Co	\$5,225,643	0.13%	\$647,610,430	\$357,383,475	\$290,226,956
24767	St Paul Fire & Marine Ins Co	\$5,204,148	0.13%	\$18,414,741,674	\$12,701,137,921	\$5,713,603,754
11839	Circle Star Ins Co RRG	\$5,195,421	0.13%	\$2,272,357	\$770,161	\$1,502,196
37885	XL Specialty Ins Co	\$5,191,185	0.13%	\$412,597,919	\$248,559,748	\$164,038,171
24791	St Paul Mercury Ins Co	\$5,143,265	0.13%	\$352,976,730	\$220,832,538	\$132,144,192
20478	National Fire Ins Co Of Hartford	\$4,983,062	0.12%	\$132,800,955	\$14,753,527	\$118,047,428
13137	Viking Ins Co Of WI	\$4,972,940	0.12%	\$365,187,770	\$192,745,532	\$172,442,238
25682	Travelers Ind Co Of CT	\$4,967,519	0.12%	\$1,017,576,250	\$687,059,231	\$330,517,018
18333	Peerless Ind Ins Co	\$4,738,909	0.12%	\$799,091,443	\$556,340,282	\$242,751,161
22306	Massachusetts Bay Ins Co	\$4,712,149	0.12%	\$57,166,144	\$173,262	\$56,992,882
24813	Balboa Ins Co	\$4,578,233	0.11%	\$1,975,879,539	\$631,740,440	\$1,344,139,099
10855	Cypress Ins Co	\$4,450,375	0.11%	\$897,880,649	\$710,479,097	\$187,401,552
11118	Federated Rural Electric Ins Exch	\$4,442,495	0.11%	\$406,339,839	\$284,204,674	\$122,135,165
42757	Agri Gen Ins Co	\$4,426,317	0.11%	\$463,654,225	\$84,478,627	\$379,175,598
11843	Medical Protective Co	\$4,413,315	0.11%	\$2,442,487,032	\$1,578,576,912	\$863,910,120
10204	Consumers Ins Usa Inc	\$4,412,000	0.11%	\$59,071,900	\$37,150,601	\$21,921,299
19356	Maryland Cas Co	\$4,400,211	0.11%	\$178,246,872	\$25,309,212	\$152,937,660

Property and Casualty (Cont.)

NAIC	Company Name	AR Premium	Market Share	Assets	Liabilities	Capital & Surplus
28223	Nationwide Agribusiness Ins Co	\$4,385,721	0.11%	\$259,530,418	\$194,578,178	\$64,952,240
38458	Genworth Mortgage Ins Corp	\$4,364,878	0.11%	\$2,682,208,102	\$2,118,196,656	\$564,011,446
38318	Starr Ind & Liab Co	\$4,286,880	0.11%	\$1,158,331,515	\$619,358,070	\$538,973,445
34789	21st Century Centennial Ins Co	\$4,283,901	0.11%	\$533,195,688	\$60,965,878	\$472,229,810
29599	US Specialty Ins Co	\$4,213,972	0.11%	\$1,889,734,956	\$1,382,436,485	\$507,298,471
39217	QBE Ins Corp	\$4,200,068	0.10%	\$2,424,870,400	\$1,584,076,304	\$840,794,096
10166	Accident Fund Ins Co of Amer	\$4,183,229	0.10%	\$2,126,586,472	\$1,547,685,424	\$578,901,048
14974	Pennsylvania Lumbermens Mut Ins	\$4,181,242	0.10%	\$350,691,553	\$239,046,913	\$111,644,640
24171	Netherlands Ins Co The	\$4,180,998	0.10%	\$497,968,228	\$340,255,236	\$157,712,992
18236	Agents Mut Ins Co	\$4,161,622	0.10%	\$1,741,389	\$731,177	\$1,010,210
20397	Vigilant Ins Co	\$4,153,291	0.10%	\$440,356,121	\$206,751,918	\$233,604,203
21180	Sentry Select Ins Co	\$4,131,914	0.10%	\$616,899,399	\$396,636,496	\$220,262,903
41181	Universal Underwriters Ins Co	\$4,125,571	0.10%	\$376,016,137	\$34,216,720	\$341,799,417
36684	Riverport Ins Co	\$4,079,602	0.10%	\$122,987,691	\$83,763,563	\$39,224,128
15105	Safety Natl Cas Corp	\$4,044,659	0.10%	\$2,868,933,136	\$2,024,461,260	\$844,471,876
20494	Transportation Ins Co	\$4,032,187	0.10%	\$84,203,193	\$62,121	\$84,141,072
36625	Old Reliable Cas Co	\$4,024,196	0.10%	\$9,971,114	\$1,441,764	\$8,529,350
39845	Westport Ins Corp	\$4,013,271	0.10%	\$5,656,595,337	\$3,715,648,361	\$1,940,946,976
22314	RSUI Ind Co	\$3,981,045	0.10%	\$2,772,715,877	\$1,510,371,675	\$1,262,344,202
13714	Pharmacists Mut Ins Co	\$3,939,190	0.10%	\$211,919,002	\$143,935,522	\$67,983,480
10464	Canal Ins Co	\$3,887,271	0.10%	\$850,276,534	\$448,357,327	\$401,919,207
30104	Hartford Underwriters Ins Co	\$3,836,068	0.10%	\$1,571,865,279	\$963,559,015	\$608,306,264
14982	Penn Millers Ins Co	\$3,788,309	0.09%	\$201,227,290	\$132,040,717	\$69,186,573
25011	Wesco Ins Co	\$3,748,252	0.09%	\$326,593,334	\$244,013,459	\$82,579,875
13188	Western Surety Co	\$3,727,636	0.09%	\$1,587,129,780	\$697,645,147	\$889,484,633
34339	Metropolitan Grp Prop & Cas Ins Co	\$3,702,361	0.09%	\$550,183,132	\$234,178,398	\$316,004,734
18023	Star Ins Co	\$3,699,735	0.09%	\$861,916,075	\$632,774,540	\$229,141,535
21423	Union Ins Co Of Providence	\$3,694,807	0.09%	\$98,257,155	\$50,376,767	\$47,880,388
33790	Radian Guar Inc	\$3,694,516	0.09%	\$3,821,807,122	\$2,978,628,869	\$843,178,253
12114	National Security Fire & Cas Co	\$3,537,808	0.09%	\$61,009,516	\$35,550,765	\$25,458,751
16047	Southern Pioneer Prop & Cas Ins Co	\$3,536,639	0.09%	\$21,337,783	\$8,668,706	\$12,669,077
13056	RLI Ins Co	\$3,513,161	0.09%	\$1,467,155,387	\$756,969,529	\$710,185,858
10784	Maxum Cas Ins Co	\$3,467,036	0.09%	\$49,568,417	\$34,397,695	\$15,170,722
14168	Harleysville Mut Ins Co	\$3,417,187	0.09%	\$1,532,050,770	\$672,235,766	\$859,815,004
26344	Great Amer Assur Co	\$3,378,357	0.08%	\$18,186,918	\$10,984	\$18,175,934
15032	Guideone Mut Ins Co	\$3,331,798	0.08%	\$1,074,148,359	\$665,700,890	\$408,447,469
15130	Encompass Ind Co	\$3,278,451	0.08%	\$24,855,966	\$640,774	\$24,215,192
20427	American Cas Co Of Reading PA	\$3,251,625	0.08%	\$131,109,692	\$41,228	\$131,068,464
11255	Caterpillar Ins Co	\$3,222,860	0.08%	\$473,953,909	\$322,338,059	\$151,615,850
10723	Nationwide Assur Co	\$3,209,086	0.08%	\$72,030,603	\$12,573,357	\$59,457,246
40045	Starnet Ins Co	\$3,209,070	0.08%	\$189,165,333	\$75,765,571	\$113,399,761
32220	21st Century N Amer Ins Co	\$3,162,000	0.08%	\$617,394,168	\$128,065,746	\$489,328,422
35289	Continental Ins Co	\$3,132,089	0.08%	\$2,668,525,922	\$1,427,885,554	\$1,240,640,368
10510	Carolina Cas Ins Co	\$3,110,228	0.08%	\$285,945,853	\$52,789,465	\$233,156,389
28535	Triangle Ins Co Inc	\$3,049,764	0.08%	\$41,951,312	\$25,856,614	\$16,094,698
37869	Pre Paid Legal Cas Inc	\$3,034,145	0.08%	\$22,520,108	\$3,374,022	\$19,146,086
22608	National Specialty Ins Co	\$3,012,614	0.08%	\$34,746,343	\$15,685,806	\$19,060,537
33987	ADM Ins Co	\$2,982,132	0.07%	\$39,723,978	\$18,817,432	\$20,906,546
39306	Fidelity & Deposit Co Of MD	\$2,981,308	0.07%	\$244,157,256	\$49,366,169	\$194,791,087
18295	Lafayette Ins Co	\$2,971,732	0.07%	\$130,524,647	\$67,297,872	\$63,226,775
19062	Automobile Ins Co Of Hartford CT	\$2,954,559	0.07%	\$959,371,573	\$676,827,919	\$282,543,654
22322	Greenwich Ins Co	\$2,947,474	0.07%	\$913,052,220	\$506,433,901	\$406,618,319
32620	National Interstate Ins Co	\$2,944,391	0.07%	\$994,710,927	\$701,097,223	\$293,613,704
20087	National Ind Co	\$2,849,596	0.07%	\$115,452,570,996	\$45,297,143,421	\$70,155,427,575

Property and Casualty (Cont.)

NAIC	Company Name	AR Premium	Market Share	Assets	Liabilities	Capital & Surplus
23612	Midwest Employers Cas Co	\$2,841,058	0.07%	\$316,200,701	\$176,469,510	\$139,731,191
12416	Protective Ins Co	\$2,816,784	0.07%	\$633,464,877	\$321,127,313	\$312,337,564
24554	XL Ins Amer Inc	\$2,806,478	0.07%	\$686,329,437	\$462,897,769	\$223,431,668
35319	United Automobile Ins Co	\$2,789,670	0.07%	\$383,755,350	\$288,462,617	\$95,292,734
26182	Harleysville Worcester Ins Co	\$2,776,076	0.07%	\$763,473,101	\$578,898,922	\$184,574,179
24260	Progressive Cas Ins Co	\$2,733,926	0.07%	\$5,129,933,944	\$3,770,062,886	\$1,359,871,058
11126	Sompo Japan Ins Co of Amer	\$2,729,784	0.07%	\$869,050,849	\$423,669,016	\$445,381,833
19615	American Reliable Ins Co	\$2,722,180	0.07%	\$296,265,671	\$194,453,379	\$101,812,292
27251	PMI Mortgage Ins Co	\$2,709,178	0.07%	\$2,565,694,660	\$4,652,197,218	\$(2,086,502,558)
23396	Amerisure Mut Ins Co	\$2,626,568	0.07%	\$1,751,737,948	\$1,078,688,935	\$673,049,013
13838	Farmland Mut Ins Co	\$2,626,361	0.07%	\$398,354,068	\$248,158,997	\$150,195,071
19658	Bristol W Ins Co	\$2,619,670	0.07%	\$153,117,541	\$107,960,799	\$45,156,742
12223	Santa Fe Auto Ins Co	\$2,611,579	0.07%	\$60,131,166	\$53,406,151	\$6,725,015
21458	Employers Ins of Wausau	\$2,606,418	0.07%	\$3,795,737,568	\$2,566,932,619	\$1,228,804,949
12157	Companion Prop & Cas Ins Co	\$2,604,626	0.06%	\$618,538,732	\$421,613,798	\$196,924,934
24414	General Cas Co Of WI	\$2,493,622	0.06%	\$1,205,257,253	\$723,749,078	\$481,508,176
23280	The Cincinnati Ind Co	\$2,466,138	0.06%	\$93,402,039	\$20,382,543	\$73,019,496
19305	Assurance Co Of Amer	\$2,435,050	0.06%	\$32,087,711	\$13,604,113	\$18,483,598
32387	Star Cas Ins Co	\$2,378,095	0.06%	\$15,716,593	\$9,214,433	\$6,502,160
12696	America First Ins Co	\$2,304,052	0.06%	\$13,451,411	\$606,256	\$12,845,155
43575	Indemnity Ins Co Of North Amer	\$2,298,749	0.06%	\$375,111,939	\$281,002,666	\$94,109,273
10030	Westchester Fire Ins Co	\$2,268,715	0.06%	\$2,420,497,569	\$1,315,873,590	\$1,104,623,979
10895	Midwest Ins Co	\$2,266,866	0.06%	\$75,867,552	\$54,490,454	\$21,377,098
11398	Guarantee Ins Co	\$2,166,800	0.05%	\$264,686,471	\$217,956,946	\$46,729,525
38652	American Modern Select Ins Co	\$2,159,118	0.05%	\$195,895,936	\$162,572,825	\$33,323,111
23728	National Gen Ins Co	\$2,157,277	0.05%	\$136,019,474	\$81,044,830	\$54,974,644
28665	Cincinnati Cas Co	\$2,134,503	0.05%	\$313,321,029	\$33,341,803	\$279,979,226
42803	Guideone Elite Ins Co	\$2,129,217	0.05%	\$27,560,415	\$7,717,810	\$19,842,605
16705	Dealers Assur Co	\$2,105,547	0.05%	\$76,420,489	\$32,264,809	\$44,155,680
19801	Argonaut Ins Co	\$2,084,598	0.05%	\$1,328,133,267	\$955,084,301	\$373,048,967
12262	Pennsylvania Manufacturers Assoc Ins	\$2,063,101	0.05%	\$699,222,511	\$469,100,083	\$230,122,428
24198	Peerless Ins Co	\$2,061,944	0.05%	\$7,361,784,538	\$5,559,307,309	\$1,802,477,229
21113	United States Fire Ins Co	\$2,049,607	0.05%	\$2,722,948,415	\$1,828,133,227	\$894,815,188
41998	American Southern Home Ins Co	\$2,048,305	0.05%	\$134,808,124	\$100,652,463	\$34,155,661
24988	Sentry Ins A Mut Co	\$2,043,359	0.05%	\$5,891,424,549	\$2,474,264,893	\$3,417,159,656
22357	Hartford Accident & Ind Co	\$2,022,661	0.05%	\$10,631,430,293	\$7,808,332,995	\$2,823,097,297
38245	BCS Ins Co	\$2,002,158	0.05%	\$230,556,413	\$83,940,000	\$146,616,413
36137	Travelers Commercial Ins Co	\$1,960,336	0.05%	\$333,287,972	\$249,552,450	\$83,735,522
20052	National Liab & Fire Ins Co	\$1,953,943	0.05%	\$1,131,961,120	\$574,827,019	\$557,134,101
28932	Markel Amer Ins Co	\$1,896,101	0.05%	\$448,805,466	\$315,891,428	\$132,914,038
22136	Great Amer Ins Co of NY	\$1,852,593	0.05%	\$43,956,020	\$6,300	\$43,949,720
29068	IDS Prop Cas Ins Co	\$1,850,137	0.05%	\$1,039,884,267	\$608,838,416	\$431,045,851
12831	State Natl Ins Co Inc	\$1,835,546	0.05%	\$204,377,323	\$63,668,957	\$140,708,366
11800	Foremost Prop & Cas Ins Co	\$1,835,498	0.05%	\$46,112,872	\$29,405,928	\$16,706,944
13927	Homesite Ins Co Of The Midwest	\$1,795,377	0.04%	\$241,829,652	\$170,158,676	\$71,670,976
40843	Universal Underwriters Of TX Ins	\$1,771,719	0.04%	\$11,781,895	\$2,389,294	\$9,392,601
22012	Motors Ins Corp	\$1,762,476	0.04%	\$3,042,035,024	\$1,693,176,534	\$1,348,858,490
35696	Harleysville Preferred Ins Co	\$1,754,890	0.04%	\$691,565,884	\$533,408,039	\$158,157,845
42376	Technology Ins Co Inc	\$1,749,909	0.04%	\$845,785,228	\$652,749,483	\$193,035,745
20109	Bituminous Fire & Marine Ins Co	\$1,747,560	0.04%	\$456,131,096	\$310,847,893	\$145,283,203
23809	Granite State Ins Co	\$1,740,411	0.04%	\$39,491,826	\$948,512	\$38,543,314
20303	Great Northern Ins Co	\$1,728,811	0.04%	\$1,581,486,172	\$1,144,820,901	\$436,665,271
26069	Wausau Business Ins Co	\$1,699,982	0.04%	\$207,179,616	\$151,181,809	\$55,997,807
19402	Chartis Prop Cas Co	\$1,691,506	0.04%	\$4,068,161,881	\$2,367,701,242	\$1,700,460,639

Property and Casualty (Cont.)

NAIC	Company Name	AR Premium	Market Share	Assets	Liabilities	Capital & Surplus
20044	Berkshire Hathaway Homestate Ins Co	\$1,686,077	0.04%	\$776,005,943	\$143,584,528	\$632,421,415
11223	Safeway Ins Co Of AL	\$1,681,665	0.04%	\$53,203,152	\$21,427,771	\$31,775,381
19887	Trinity Universal Ins Co	\$1,663,576	0.04%	\$2,452,503,800	\$1,628,519,367	\$823,984,433
22837	AGCS Marine Ins Co	\$1,638,108	0.04%	\$738,936,854	\$637,923,123	\$101,013,731
28304	Federated Serv Ins Co	\$1,635,319	0.04%	\$370,557,208	\$204,947,558	\$165,609,649
42994	Progressive Classic Ins Co	\$1,624,739	0.04%	\$290,423,019	\$208,698,177	\$81,724,842
18287	Assured Guar Municipal Corp	\$1,615,906	0.04%	\$4,385,623,706	\$3,176,319,724	\$1,209,303,982
23663	National Amer Ins Co	\$1,597,687	0.04%	\$146,783,921	\$91,934,644	\$54,849,277
13565	Arkansas Mut Ins Co	\$1,595,473	0.04%	\$4,253,630	\$1,362,026	\$2,891,604
19488	Amerisure Ins Co	\$1,590,878	0.04%	\$670,267,514	\$463,267,451	\$207,000,063
38970	Markel Ins Co	\$1,584,271	0.04%	\$839,699,456	\$633,301,972	\$206,397,484
10847	Cumis Ins Society Inc	\$1,580,613	0.04%	\$1,623,298,884	\$1,121,450,615	\$501,848,269
26921	Everest Reins Co	\$1,575,740	0.04%	\$8,610,623,947	\$6,288,508,603	\$2,322,115,344
10922	Insuremax Ins Co	\$1,535,506	0.04%	\$17,765,272	\$10,728,800	\$7,036,472
19518	Catlin Ins Co	\$1,534,112	0.04%	\$144,787,530	\$81,065,374	\$63,722,156
26310	Granite Re Inc	\$1,474,803	0.04%	\$31,173,326	\$15,980,524	\$15,192,802
10349	Acceptance Cas Ins Co	\$1,468,431	0.04%	\$55,585,083	\$22,137,649	\$33,447,434
19917	Liberty Ins Underwriters Inc	\$1,461,034	0.04%	\$214,008,263	\$101,948,070	\$112,060,193
23418	Mid Continent Cas Co	\$1,445,227	0.04%	\$547,581,864	\$370,514,240	\$177,067,624
17965	American Sentinel Ins Co	\$1,437,816	0.04%	\$25,722,450	\$12,254,993	\$13,467,457
18538	Bancinsure Inc	\$1,427,009	0.04%	\$99,773,389	\$86,977,393	\$12,795,996
40258	Chartis Cas Co	\$1,420,378	0.04%	\$42,772,237	\$920,899	\$41,851,338
24074	Ohio Cas Ins Co	\$1,392,882	0.03%	\$4,859,960,864	\$3,772,400,873	\$1,087,559,991
34037	Hallmark Ins Co	\$1,389,746	0.03%	\$212,071,928	\$144,808,787	\$67,263,141
43656	Louisiana Med Mut Ins Co	\$1,385,633	0.03%	\$379,649,558	\$226,601,137	\$153,048,421
19038	Travelers Cas & Surety Co	\$1,360,325	0.03%	\$14,784,708,655	\$9,887,488,781	\$4,897,219,874
29980	First Colonial Ins Co	\$1,359,814	0.03%	\$349,660,457	\$199,227,289	\$150,433,168
42307	Navigators Ins Co	\$1,340,771	0.03%	\$1,903,904,075	\$1,241,742,531	\$662,161,544
42749	Traders Ins Co	\$1,331,074	0.03%	\$19,785,851	\$14,623,889	\$5,161,962
34274	Central States Ind Co Of Omaha	\$1,330,170	0.03%	\$287,043,545	\$37,437,784	\$249,605,761
24449	Regent Ins Co	\$1,326,236	0.03%	\$145,685,100	\$105,750,814	\$39,934,286
16578	Fidelity Natl Prop & Cas Ins Co	\$1,307,340	0.03%	\$100,761,174	\$3,325,192	\$97,435,982
12304	Accident Fund Gen Ins Co	\$1,292,699	0.03%	\$139,026,733	\$104,659,636	\$34,367,097
40460	Sagamore Ins Co	\$1,270,814	0.03%	\$160,075,018	\$42,741,719	\$117,333,299
42552	Nova Cas Co	\$1,265,939	0.03%	\$94,793,819	\$5,921,559	\$88,872,260
19860	Argonaut Great Central Ins Co	\$1,264,434	0.03%	\$49,244,574	\$28,184,961	\$21,059,613
11630	Jefferson Ins Co	\$1,238,422	0.03%	\$37,829,052	\$15,131,237	\$22,697,815
33588	First Liberty Ins Corp	\$1,226,662	0.03%	\$56,151,318	\$33,043,388	\$23,107,930
19704	American States Ins Co	\$1,225,378	0.03%	\$1,824,791,793	\$1,442,507,659	\$382,284,134
21164	Dairyland Ins Co	\$1,224,523	0.03%	\$1,130,014,930	\$674,327,197	\$455,687,733
10023	Alliance Of Nonprofits For Ins RRG	\$1,213,761	0.03%	\$51,293,384	\$25,340,509	\$25,952,875
21326	Empire Fire & Marine Ins Co	\$1,212,028	0.03%	\$135,476,724	\$85,501,462	\$49,975,262
44300	Tower Ins Co Of NY	\$1,195,467	0.03%	\$981,612,496	\$701,075,077	\$280,537,419
21881	National Surety Corp	\$1,171,101	0.03%	\$496,175,488	\$353,843,758	\$142,331,730
10071	Encompass Ins Co Of Amer	\$1,154,007	0.03%	\$21,505,212	\$305,656	\$21,199,556
11042	Stonetrust Commercial Ins Co	\$1,151,129	0.03%	\$67,699,349	\$48,010,958	\$19,688,391
42617	MAG Mut Ins Co	\$1,141,575	0.03%	\$1,510,375,252	\$900,278,314	\$610,096,938
10690	Allied World Natl Assur Co	\$1,139,795	0.03%	\$279,724,888	\$167,250,650	\$112,474,238
44393	West Amer Ins Co	\$1,138,157	0.03%	\$327,758,052	\$73,773,619	\$253,984,433
14354	Jewelers Mut Ins Co	\$1,132,734	0.03%	\$246,957,964	\$102,251,252	\$144,706,712
14559	Guideone Specialty Mut Ins Co	\$1,132,357	0.03%	\$233,470,135	\$148,137,008	\$85,333,127
44725	1st Auto & Cas Ins Co	\$1,129,378	0.03%	\$30,867,542	\$19,217,369	\$11,650,173
19976	Amica Mut Ins Co	\$1,120,041	0.03%	\$4,126,651,274	\$1,866,231,994	\$2,260,419,280
41483	Farmington Cas Co	\$1,099,320	0.03%	\$974,400,820	\$713,196,610	\$261,204,209

Property and Casualty (Cont.)

NAIC	Company Name	AR Premium	Market Share	Assets	Liabilities	Capital & Surplus
19879	Security Natl Ins Co	\$1,095,033	0.03%	\$108,908,556	\$77,415,767	\$31,492,789
41459	Armed Forces Ins Exch	\$1,089,203	0.03%	\$127,947,493	\$80,038,857	\$47,908,636
43494	American Hallmark Ins Co Of TX	\$1,085,136	0.03%	\$257,742,400	\$157,895,939	\$99,846,461
37220	Direct Ins Co	\$1,084,679	0.03%	\$64,848,191	\$47,433,422	\$17,414,769
10952	Stonebridge Cas Ins Co	\$1,079,311	0.03%	\$275,775,173	\$185,963,467	\$89,811,706
20516	Euler Hermes Amer Credit Ind Co	\$1,070,565	0.03%	\$376,404,811	\$233,862,085	\$142,542,726
26077	Lancer Ins Co	\$1,069,605	0.03%	\$480,610,472	\$323,339,300	\$157,271,172
20613	Sparta Ins Co	\$1,047,918	0.03%	\$477,853,199	\$223,390,000	\$254,463,199
21857	American Ins Co	\$1,045,568	0.03%	\$1,303,438,947	\$989,465,085	\$313,973,862
24350	Triad Guar Ins Corp	\$1,028,334	0.03%	\$839,887,395	\$605,768,899	\$234,118,496
10340	Stonington Ins Co	\$1,016,904	0.03%	\$52,600,217	\$(1,133,321)	\$53,733,538
30180	Assured Guar Corp	\$994,160	0.02%	\$3,010,407,924	\$1,988,908,728	\$1,021,499,197
23108	Lumbermens Underwriting Alliance	\$989,927	0.02%	\$306,143,227	\$248,436,527	\$57,706,700
23582	Harleysville Ins Co	\$989,272	0.02%	\$135,356,137	\$105,709,558	\$29,646,579
40827	Virginia Surety Co Inc	\$988,222	0.02%	\$970,139,840	\$683,847,328	\$286,292,512
14206	Holyoke Mut Ins Co In Salem	\$981,260	0.02%	\$200,823,622	\$118,460,718	\$82,362,904
10103	American Agricultural Ins Co	\$969,669	0.02%	\$1,089,728,169	\$659,548,683	\$430,179,486
10120	Everest Natl Ins Co	\$953,012	0.02%	\$466,097,220	\$335,822,272	\$130,274,948
10639	Attorneys Liab Assur Society Inc RRG	\$952,092	0.02%	\$137,142,023	\$80,466,319	\$56,675,704
11004	Alfa Specialty Ins Corp	\$941,756	0.02%	\$37,487,005	\$21,702,814	\$15,784,191
20621	OneBeacon Amer Ins Co	\$939,237	0.02%	\$483,405,267	\$300,538,162	\$182,867,105
33650	Mendota Ins Co	\$936,142	0.02%	\$91,037,518	\$66,368,448	\$24,669,070
12300	American Contractors Ins Co RRG	\$914,868	0.02%	\$16,935,708	\$10,160,435	\$6,775,273
19690	American Economy Ins Co	\$911,929	0.02%	\$1,268,229,649	\$1,034,199,616	\$234,030,033
26492	Courtesy Ins Co	\$900,210	0.02%	\$536,104,864	\$309,251,289	\$226,853,576
40134	Castlepoint Natl Ins Co	\$878,467	0.02%	\$482,692,153	\$352,463,857	\$130,228,296
25054	Hudson Ins Co	\$877,518	0.02%	\$736,586,712	\$347,939,596	\$388,647,116
24112	Westfield Ins Co	\$864,745	0.02%	\$2,128,768,915	\$1,354,507,534	\$774,261,381
12870	Sentruiy Cas Co	\$864,613	0.02%	\$47,531,858	\$19,111,196	\$28,420,662
27928	Amex Assur Co	\$863,458	0.02%	\$257,627,554	\$53,773,698	\$203,853,856
39942	American Natl Gen Ins Co	\$856,103	0.02%	\$109,048,040	\$55,683,712	\$53,364,328
10051	Lyndon Southern Ins Co	\$839,953	0.02%	\$37,902,773	\$19,751,787	\$18,150,986
19372	Northern Ins Co Of NY	\$818,341	0.02%	\$36,931,990	\$8,378,070	\$28,553,920
19224	St Paul Protective Ins Co	\$803,553	0.02%	\$500,375,161	\$278,765,445	\$221,609,716
36234	Preferred Professional Ins Co	\$790,855	0.02%	\$368,865,245	\$205,815,244	\$163,050,001
15954	AmTrust Ins Co of KS Inc	\$780,922	0.02%	\$21,919,031	\$9,066,670	\$12,852,361
37915	Essentia Ins Co	\$774,603	0.02%	\$46,754,180	\$19,302,043	\$27,452,137
11452	Hartford Steam Boil Inspec & Ins Co	\$769,660	0.02%	\$1,313,943,088	\$669,020,348	\$644,922,740
20117	California Cas Ind Exch	\$766,494	0.02%	\$631,387,564	\$298,292,559	\$333,095,005
21849	American Automobile Ins Co	\$735,989	0.02%	\$390,131,221	\$231,501,699	\$158,629,522
21105	North River Ins Co	\$727,056	0.02%	\$816,823,638	\$534,525,134	\$282,298,504
12904	Tokio Marine & Nichido Fire Ins Co	\$724,444	0.02%	\$1,599,149,509	\$900,050,912	\$699,098,597
10052	Chubb Natl Ins Co	\$720,034	0.02%	\$244,803,097	\$137,224,595	\$107,578,502
12777	Chubb Ind Ins Co	\$700,975	0.02%	\$311,031,437	\$203,173,349	\$107,858,088
12305	Accident Fund Natl Ins Co	\$700,897	0.02%	\$205,072,010	\$156,455,063	\$48,616,947
39969	American Safety Cas Ins Co	\$699,989	0.02%	\$209,835,590	\$134,475,437	\$75,360,153
10708	Lemic Ins Co	\$690,372	0.02%	\$61,492,046	\$42,324,947	\$19,167,099
33898	Aegis Security Ins Co	\$690,082	0.02%	\$85,453,841	\$41,922,712	\$43,531,129
14265	Indiana Lumbermens Mut Ins Co	\$682,788	0.02%	\$93,793,337	\$68,282,592	\$25,510,746
10916	Suretec Ins Co	\$680,749	0.02%	\$122,816,131	\$56,368,950	\$66,447,182
32603	Berkley Ins Co	\$678,987	0.02%	\$7,830,163,642	\$5,219,000,138	\$2,611,163,505
40517	Advantage Workers Comp Ins Co	\$672,074	0.02%	\$140,100,952	\$89,728,391	\$50,372,561
19828	Argonaut Midwest Ins Co	\$669,402	0.02%	\$39,313,431	\$23,987,506	\$15,325,924
41343	HDI Gerling Amer Ins Co	\$666,068	0.02%	\$257,610,607	\$141,174,917	\$116,435,689

Property and Casualty (Cont.)

NAIC	Company Name	AR Premium	Market Share	Assets	Liabilities	Capital & Surplus
20346	Pacific Ind Co	\$653,323	0.02%	\$6,283,846,454	\$3,843,083,618	\$2,440,762,836
41424	Pennsylvania Manufacturers Ind Co	\$645,693	0.02%	\$185,426,646	\$104,074,656	\$81,351,990
12472	LUBA Cas Ins Co	\$640,640	0.02%	\$191,900,638	\$130,550,414	\$61,350,224
38911	Berkley Natl Ins Co	\$631,267	0.02%	\$56,920,393	\$5,357,039	\$51,563,353
19631	American Road Ins Co	\$616,651	0.02%	\$460,725,817	\$255,657,748	\$205,068,069
10676	First Guard Ins Co	\$590,000	0.01%	\$16,233,987	\$406,809	\$15,827,178
21784	Firemens Ins Co Of Washington DC	\$578,505	0.01%	\$77,589,498	\$47,986,769	\$29,602,729
12907	Southwest Physicians RRG Inc	\$559,285	0.01%	\$47,159,635	\$39,817,253	\$7,342,382
10718	Retailers Cas Ins Co	\$558,694	0.01%	\$61,023,237	\$37,206,062	\$23,817,175
29874	North Amer Specialty Ins Co	\$556,009	0.01%	\$472,084,713	\$127,450,449	\$344,634,264
38369	Northern Assur Co Of Amer	\$553,790	0.01%	\$153,623,304	\$91,441,353	\$62,181,951
21261	Electric Ins Co	\$535,385	0.01%	\$1,444,555,055	\$984,392,556	\$460,162,502
28460	Sentry Cas Co	\$534,722	0.01%	\$187,879,646	\$116,953,482	\$70,926,164
35769	Lyndon Prop Ins Co	\$529,809	0.01%	\$389,210,291	\$208,505,973	\$180,704,318
14494	Merchants Bonding Co a Mut	\$525,982	0.01%	\$109,850,121	\$39,820,981	\$70,029,140
25895	United States Liab Ins Co	\$521,323	0.01%	\$577,814,742	\$205,457,218	\$372,357,524
20370	AXIS Reins Co	\$516,880	0.01%	\$2,296,104,674	\$1,588,350,901	\$707,753,773
31348	Crum & Forster Ind Co	\$516,111	0.01%	\$37,672,078	\$23,847,654	\$13,824,424
27855	Zurich Amer Ins Co Of IL	\$513,481	0.01%	\$41,128,460	\$5,804,170	\$35,324,290
11573	Accident Ins Co Inc	\$508,391	0.01%	\$36,956,210	\$21,852,578	\$15,103,633
12866	T H E Ins Co	\$506,620	0.01%	\$169,952,240	\$117,265,368	\$52,686,873
20362	Mitsui Sumitomo Ins Co of Amer	\$503,881	0.01%	\$763,882,208	\$478,657,256	\$285,224,952
24732	General Ins Co Of Amer	\$499,093	0.01%	\$2,114,431,039	\$1,696,340,278	\$418,090,761
10794	Companion Commercial Ins Co	\$497,736	0.01%	\$15,016,887	\$5,834,342	\$9,182,545
37540	Beazley Ins Co Inc	\$491,434	0.01%	\$229,722,097	\$114,707,098	\$115,014,999
10472	Capitol Ind Corp	\$487,807	0.01%	\$409,436,197	\$225,228,916	\$184,207,281
18619	Platte River Ins Co	\$484,137	0.01%	\$122,299,176	\$84,241,986	\$38,057,190
31232	Work First Cas Co	\$478,947	0.01%	\$41,756,481	\$35,015,937	\$6,740,544
22683	Teachers Ins Co	\$478,554	0.01%	\$275,201,518	\$154,843,066	\$120,358,452
19530	Hallmark Natl Ins Co	\$475,718	0.01%	\$43,645,167	\$23,962,524	\$19,682,643
15563	SeaBright Ins Co	\$474,764	0.01%	\$883,303,445	\$591,773,151	\$291,530,294
29157	United WI Ins Co	\$463,151	0.01%	\$325,503,795	\$261,253,347	\$64,250,448
42498	Cameron Natl Ins Co	\$455,649	0.01%	\$10,969,430	\$2,498,336	\$8,471,094
22209	Freedom Specialty Ins Co	\$435,000	0.01%	\$22,133,112	\$11,305,624	\$10,827,488
26433	Harco Natl Ins Co	\$430,165	0.01%	\$281,398,824	\$153,960,298	\$127,438,526
21970	OneBeacon Ins Co	\$427,955	0.01%	\$2,077,595,299	\$1,168,591,426	\$909,003,873
36307	Gray Ins Co	\$425,458	0.01%	\$302,656,494	\$197,167,724	\$105,488,772
24775	St Paul Guardian Ins Co	\$423,228	0.01%	\$73,523,760	\$48,659,795	\$24,863,965
29580	Berkley Regional Ins Co	\$422,390	0.01%	\$2,683,053,632	\$1,983,226,278	\$699,827,354
25976	Utica Mut Ins Co	\$418,169	0.01%	\$2,334,183,893	\$1,601,170,027	\$733,013,866
16608	New York Marine & Gen Ins Co	\$416,983	0.01%	\$666,093,394	\$450,126,159	\$215,967,235
11592	International Fidelity Ins Co	\$416,182	0.01%	\$234,075,001	\$140,020,220	\$94,054,412
35408	Imperium Ins Co	\$407,633	0.01%	\$504,558,034	\$364,233,474	\$140,324,560
24031	Northland Cas Co	\$399,963	0.01%	\$100,998,630	\$68,223,922	\$32,774,708
11598	Applied Medico Legal Solutions RRG	\$399,929	0.01%	\$83,909,738	\$61,704,864	\$22,204,874
16381	Farmers Union Coop Ins Co	\$391,987	0.01%	\$12,899,714	\$5,717,316	\$7,182,399
23248	Occidental Fire & Cas Co Of NC	\$386,516	0.01%	\$268,475,426	\$165,700,565	\$102,774,861
24724	First Natl Ins Co Of Amer	\$376,659	0.01%	\$211,639,783	\$164,951,953	\$46,687,830
21296	Alterra Amer Ins Co	\$372,436	0.01%	\$153,405,613	\$37,523,082	\$115,882,531
16217	National Farmers Union Prop & Cas	\$371,616	0.01%	\$239,235,855	\$174,932,861	\$64,302,994
10020	United Educators Ins RRG Inc	\$369,801	0.01%	\$674,475,222	\$434,563,320	\$239,911,902
11589	Jamestown Ins Co RRG	\$369,783	0.01%	\$6,773,862	\$5,409,873	\$1,363,989
13307	Lexon Ins Co	\$366,282	0.01%	\$136,272,804	\$86,586,063	\$49,686,741
14460	Podiatry Ins Co Of Amer	\$364,114	0.01%	\$326,637,182	\$230,967,600	\$95,669,582

Property and Casualty (Cont.)

NAIC	Company Name	AR Premium	Market Share	Assets	Liabilities	Capital & Surplus
15865	NCMIC Ins Co	\$362,934	0.01%	\$570,452,495	\$372,543,077	\$197,909,418
10216	American Contractors Ind Co	\$361,656	0.01%	\$369,713,031	\$304,166,436	\$65,546,595
30945	Plaza Ins Co	\$361,412	0.01%	\$41,248,027	\$17,499,093	\$23,748,934
22748	Pacific Employers Ins Co	\$359,424	0.01%	\$3,072,903,172	\$2,024,516,112	\$1,048,387,060
44121	Oms Natl Ins Co Rrg	\$342,364	0.01%	\$357,299,562	\$210,734,082	\$146,565,480
10936	Seneca Ins Co Inc	\$337,756	0.01%	\$370,315,168	\$241,159,348	\$129,155,820
44105	Ophthalmic Mut Ins Co RRG	\$332,987	0.01%	\$232,983,213	\$92,605,365	\$140,377,848
32786	Progressive Specialty Ins Co	\$331,047	0.01%	\$1,065,769,405	\$491,031,409	\$574,737,996
23647	Ironshore Ind Inc	\$326,324	0.01%	\$228,846,968	\$133,581,483	\$95,265,485
24139	Old Republic Gen Ins Corp	\$325,193	0.01%	\$1,290,808,560	\$982,832,134	\$307,976,426
26832	Great Amer Alliance Ins Co	\$323,254	0.01%	\$30,170,196	\$6,668	\$30,163,528
40444	Old Republic Surety Co	\$322,824	0.01%	\$100,986,380	\$52,906,887	\$48,079,493
12572	Selective Ins Co Of Amer	\$320,692	0.01%	\$2,400,807,957	\$1,893,417,724	\$507,390,233
24319	Darwin Select Ins Co	\$319,915	0.01%	\$188,282,143	\$127,134,832	\$61,147,311
25224	Great Divide Ins Co	\$319,007	0.01%	\$221,791,675	\$156,305,508	\$65,486,166
42048	Diamond State Ins Co	\$318,020	0.01%	\$165,527,985	\$54,497,210	\$111,030,775
23426	Oklahoma Surety Co	\$314,834	0.01%	\$28,383,456	\$11,635,990	\$16,747,466
40266	CMG Mortgage Ins Co	\$314,281	0.01%	\$360,185,718	\$259,646,821	\$100,538,897
10346	Employers Preferred Ins Co	\$313,612	0.01%	\$432,592,053	\$296,479,846	\$136,112,207
18279	Bankers Standard Ins Co	\$311,693	0.01%	\$400,824,002	\$285,388,563	\$115,435,439
36463	Discover Prop & Cas Ins Co	\$310,422	0.01%	\$149,315,548	\$87,534,422	\$61,781,126
33022	AXA Ins Co	\$306,812	0.01%	\$167,187,592	\$60,000,854	\$107,186,738
11853	Ranchers & Farmers Ins Co	\$306,253	0.01%	\$7,406,484	\$2,800,152	\$4,606,332
15580	Scottsdale Ind Co	\$301,849	0.01%	\$55,550,716	\$20,580,993	\$34,969,723
10499	Corepointe Ins Co	\$298,622	0.01%	\$203,353,916	\$67,829,955	\$135,523,962
22551	Mitsui Sumitomo Ins USA Inc	\$296,242	0.01%	\$111,992,073	\$53,316,366	\$58,675,707
35505	Rockwood Cas Ins Co	\$293,556	0.01%	\$226,241,455	\$156,282,089	\$69,959,366
10367	Avemco Ins Co	\$287,313	0.01%	\$96,380,711	\$38,165,278	\$58,215,433
36161	Travelers Prop Cas Ins Co	\$286,385	0.01%	\$221,273,215	\$156,964,566	\$64,308,650
24066	American Fire & Cas Co	\$282,845	0.01%	\$173,438,102	\$128,565,344	\$44,872,758
31089	Repwest Ins Co	\$274,416	0.01%	\$233,467,047	\$156,181,991	\$77,285,056
10083	The Natl Catholic RRG Inc	\$271,883	0.01%	\$60,794,144	\$44,940,410	\$15,853,734
10069	Housing Authority Prop A Mut Co	\$271,555	0.01%	\$164,864,624	\$56,743,266	\$108,121,359
20702	Ace Fire Underwriters Ins Co	\$261,899	0.01%	\$105,543,473	\$37,456,274	\$68,087,199
12754	Medicus Ins Co	\$261,564	0.01%	\$73,558,059	\$42,098,531	\$31,459,528
19941	American Commerce Ins Co	\$260,267	0.01%	\$367,020,395	\$239,234,288	\$127,786,107
34495	Doctors Co An Interins Exch	\$259,734	0.01%	\$2,601,485,820	\$1,409,534,443	\$1,191,951,377
29700	North Amer Elite Ins Co	\$257,006	0.01%	\$51,196,654	\$17,130,329	\$34,066,325
12750	Evergreen Natl Ind Co	\$255,049	0.01%	\$50,759,040	\$16,989,770	\$33,769,270
32778	Washington Intl Ins Co	\$254,968	0.01%	\$115,538,596	\$49,209,829	\$66,328,767
10701	Bridgefield Employers Ins Co	\$249,848	0.01%	\$132,080,980	\$22,876,245	\$109,204,735
28339	Gateway Ins Co	\$244,968	0.01%	\$53,519,238	\$37,192,711	\$16,326,526
32271	Dallas Natl Ins Co	\$243,658	0.01%	\$326,685,392	\$262,488,065	\$64,197,327
41394	Benchmark Ins Co	\$242,334	0.01%	\$116,403,077	\$71,240,033	\$45,163,044
27740	North Pointe Ins Co	\$235,240	0.01%	\$53,846,303	\$27,051,117	\$26,795,186
36650	Guarantee Co Of N Amer USA	\$228,587	0.01%	\$203,359,541	\$64,619,874	\$138,739,667
22578	Horace Mann Ins Co	\$227,536	0.01%	\$362,512,739	\$211,291,652	\$151,221,087
22756	Horace Mann Prop & Cas Ins Co	\$226,422	0.01%	\$228,084,348	\$130,993,441	\$97,090,907
27847	Insurance Co Of The West	\$226,267	0.01%	\$875,600,460	\$525,192,813	\$350,407,647
30325	Zale Ind Co	\$224,788	0.01%	\$30,155,303	\$14,924,886	\$15,230,417
20648	Employers Fire Ins Co	\$215,262	0.01%	\$87,472,118	\$27,438,383	\$60,033,735
31887	Coface N Amer Ins Co	\$213,889	0.01%	\$127,265,119	\$77,960,096	\$49,305,023
27154	Atlantic Specialty Ins Co	\$213,546	0.01%	\$105,154,482	\$11,799,348	\$93,355,134
41491	Geico Cas Co	\$211,648	0.01%	\$856,053,258	\$605,621,383	\$250,431,875

Property and Casualty (Cont.)

NAIC	Company Name	AR Premium	Market Share	Assets	Liabilities	Capital & Surplus
44237	Mental Hlth RRG	\$209,832	0.01%	\$22,383,380	\$11,991,093	\$10,392,288
10235	American Southern Ins Co	\$209,046	0.01%	\$99,681,795	\$61,693,991	\$37,987,804
23353	Meridian Security Ins Co	\$207,092	0.01%	\$80,016,439	\$46,001,604	\$34,014,835
43265	Gramercy Ins Co	\$204,569	0.01%	\$60,737,626	\$49,401,330	\$11,336,296
18430	Agricultural Workers Mut Auto Ins	\$200,899	0.01%	\$63,023,654	\$37,018,147	\$26,005,507
28258	Continental Ind Co	\$199,843	0.00%	\$69,144,835	\$41,973,542	\$27,171,294
11832	Health Care Industry Liab Recip Ins	\$194,070	0.00%	\$158,899,152	\$150,210,813	\$8,688,339
14788	NGM Ins Co	\$191,949	0.00%	\$2,018,209,381	\$1,247,742,251	\$770,467,130
28886	Transguard Ins Co Of Amer Inc	\$183,153	0.00%	\$212,328,789	\$117,314,894	\$95,013,895
37060	Old United Cas Co	\$182,764	0.00%	\$488,005,692	\$236,788,257	\$251,217,435
13722	Knightbrook Ins Co	\$175,970	0.00%	\$67,814,902	\$41,205,797	\$26,609,101
10353	Ooida RRG Inc	\$175,664	0.00%	\$57,403,772	\$36,762,444	\$20,641,328
25984	Graphic Arts Mut Ins Co	\$174,670	0.00%	\$137,286,929	\$89,847,826	\$47,439,103
36897	Manufacturers Alliance Ins Co	\$167,672	0.00%	\$170,713,635	\$99,426,609	\$71,287,026
37710	First Amer Prop & Cas Ins Co	\$163,629	0.00%	\$86,069,268	\$44,688,330	\$41,380,938
15962	Kansas Bankers Surety Co	\$157,916	0.00%	\$156,572,932	\$20,720,037	\$135,852,895
10476	STICO Mut Ins Co RRG	\$155,385	0.00%	\$19,902,798	\$9,331,516	\$10,571,282
13634	Essent Guar Inc	\$154,829	0.00%	\$175,899,805	\$33,961,025	\$141,938,780
21172	Vanliner Ins Co	\$150,466	0.00%	\$298,724,874	\$182,789,474	\$115,935,400
25887	United States Fidelity & Guar Co	\$149,308	0.00%	\$4,646,799,971	\$2,158,110,704	\$2,488,689,267
29530	AXA Art Ins Corp	\$140,259	0.00%	\$46,793,565	\$16,307,997	\$30,485,569
19984	ACIG Ins Co	\$140,158	0.00%	\$331,685,407	\$249,046,625	\$82,638,777
34924	Dakota Truck Underwriters	\$137,622	0.00%	\$90,091,685	\$59,037,181	\$31,054,504
44130	Paratransit RRG Grp Ins Co	\$137,617	0.00%	\$23,250,253	\$14,080,013	\$9,170,240
10084	Title Industry Assur Co RRG	\$133,117	0.00%	\$6,808,663	\$4,559,898	\$2,248,765
10815	Verlan Fire Ins Co MD	\$132,706	0.00%	\$23,694,614	\$238,009	\$23,456,605
38601	MIC Prop & Cas Ins Corp	\$132,151	0.00%	\$124,422,258	\$71,701,794	\$52,720,464
38962	Genesis Ins Co	\$130,845	0.00%	\$175,335,193	\$66,656,253	\$108,678,940
25585	Professionals Direct Ins Co	\$129,527	0.00%	\$20,386,165	\$105,582	\$20,280,583
25496	Torus Natl Ins Co	\$125,866	0.00%	\$111,235,917	\$29,565,228	\$81,670,689
35181	Executive Risk Ind Inc	\$125,712	0.00%	\$2,832,410,046	\$1,755,508,833	\$1,076,901,213
13613	College RRG Inc	\$125,122	0.00%	\$12,460,969	\$8,528,510	\$3,932,459
37893	Ullico Cas Co	\$124,838	0.00%	\$384,796,604	\$291,708,864	\$93,087,738
36927	Colony Specialty Ins Co	\$117,837	0.00%	\$71,054,195	\$45,873,400	\$25,180,795
13126	Midwest Builders Cas Mut Co	\$117,666	0.00%	\$71,887,674	\$32,662,548	\$39,225,127
13269	Zenith Ins Co	\$117,204	0.00%	\$1,714,102,071	\$1,094,023,219	\$620,078,852
12297	Petroleum Cas Co	\$115,704	0.00%	\$32,578,941	\$8,329,520	\$24,249,421
33162	Bankers Ins Co	\$112,395	0.00%	\$116,240,232	\$78,684,779	\$37,555,453
24082	Ohio Security Ins Co	\$111,212	0.00%	\$27,663,367	\$13,134,015	\$14,529,352
10222	PACO Assur Co Inc	\$109,940	0.00%	\$71,210,047	\$43,618,535	\$27,591,512
10220	Commonwealth Ins Co Of Amer	\$109,890	0.00%	\$25,364,297	\$17,444,625	\$7,919,672
31968	Merastar Ins Co	\$105,090	0.00%	\$40,616,196	\$32,237,656	\$8,378,541
10671	The Gray Cas & Surety Co	\$104,562	0.00%	\$18,045,160	\$3,556,158	\$14,489,002
13978	Florists Mut Ins Co	\$101,813	0.00%	\$157,425,483	\$113,876,839	\$43,548,644
36072	National Guardian RRG Inc	\$98,936	0.00%	\$15,823,437	\$10,294,388	\$5,529,049
26565	Ohio Ind Co	\$97,797	0.00%	\$111,935,955	\$66,743,649	\$45,192,306
21903	Procentury Ins Co	\$97,794	0.00%	\$166,502,809	\$130,817,236	\$35,685,573
14990	Pennsylvania Natl Mut Cas Ins Co	\$97,769	0.00%	\$1,071,125,261	\$619,974,689	\$451,150,572
25448	American Safety RRG Inc	\$89,982	0.00%	\$15,818,987	\$7,226,888	\$8,592,099
14249	Founders Ins Co	\$89,959	0.00%	\$248,849,411	\$174,853,708	\$73,995,704
42986	Standard Guar Ins Co	\$89,507	0.00%	\$182,041,657	\$88,677,074	\$93,364,583
11206	Housing Enterprise Ins Co Inc	\$84,544	0.00%	\$51,723,834	\$20,221,036	\$31,502,798
26662	Milwaukee Cas Ins Co	\$83,640	0.00%	\$21,493,459	\$8,981,724	\$12,511,735
12209	Restoration RRG Inc	\$75,599	0.00%	\$44,536,277	\$29,274,048	\$15,262,229

Property and Casualty (Cont.)

NAIC	Company Name	AR Premium	Market Share	Assets	Liabilities	Capital & Surplus
25186	Emc Prop & Cas Ins Co	\$71,910	0.00%	\$136,928,018	\$70,417,363	\$66,510,655
12718	Developers Surety & Ind Co	\$70,581	0.00%	\$120,069,448	\$43,942,317	\$76,127,131
26797	Housing Authority RRG Inc	\$69,903	0.00%	\$307,105,524	\$127,799,480	\$179,306,045
11033	Automotive Underwriters Ins Co A RRG	\$67,945	0.00%	\$22,389,321	\$13,707,900	\$8,681,421
12189	Oceanus Ins Co A RRG	\$67,605	0.00%	\$64,772,047	\$50,124,740	\$14,647,307
37206	Contractors Bonding & Ins Co	\$66,409	0.00%	\$198,690,044	\$108,326,434	\$90,363,610
11600	Frank Winston Crum Ins Inc	\$63,462	0.00%	\$45,358,941	\$31,916,937	\$13,442,004
43460	Aspen Amer Ins Co	\$62,427	0.00%	\$143,180,358	\$40,170,534	\$103,009,824
21865	Associated Ind Corp	\$61,861	0.00%	\$171,130,078	\$90,964,790	\$80,165,288
10752	Healthcare Safety & Protection RRG I	\$61,595	0.00%	\$5,956,493	\$3,396,134	\$2,560,360
18708	Ambac Assur Corp	\$61,414	0.00%	\$7,613,074,210	\$7,117,780,771	\$495,293,439
14026	Sunland RRG Inc	\$60,500	0.00%	\$1,934,237	\$916,285	\$1,017,952
37923	Seaworthy Ins Co	\$56,822	0.00%	\$67,517,641	\$36,089,774	\$31,427,867
36153	Aetna Ins Co of CT	\$54,772	0.00%	\$30,242,876	\$13,775,769	\$16,467,107
13200	Universal Surety Of Amer	\$48,140	0.00%	\$23,936,567	\$8,985,928	\$14,950,639
11967	General Star Natl Ins Co	\$47,892	0.00%	\$251,710,149	\$85,046,931	\$166,663,218
10200	Hiscox Ins Co Inc	\$44,830	0.00%	\$77,771,122	\$24,098,393	\$53,672,729
15474	National Lloyds Ins Co	\$44,811	0.00%	\$185,814,049	\$91,660,045	\$94,154,004
37850	Pacific Specialty Ins Co	\$43,823	0.00%	\$301,742,970	\$132,785,266	\$168,957,704
13177	ARCOA RRG Inc	\$42,864	0.00%	\$10,309,783	\$7,840,445	\$2,469,338
15679	National Fire & Ind Exch	\$40,121	0.00%	\$10,966,227	\$5,728,090	\$5,238,137
35963	AF&L Ins Co	\$40,010	0.00%	\$176,373,545	\$176,305,950	\$67,595
13791	Aviation Alliance Ins RRG Inc	\$38,346	0.00%	\$2,000,149	\$1,018,035	\$982,114
26611	Valiant Ins Co	\$37,535	0.00%	\$40,382,563	\$10,023,292	\$30,359,271
19348	Capson Physicians Ins Co	\$34,246	0.00%	\$12,687,957	\$2,396,679	\$10,291,278
12172	Claim Professionals Liab ins Co RRG	\$33,363	0.00%	\$2,779,363	\$1,345,133	\$1,434,230
10754	Spirit Mountain Ins Co RRG Inc	\$32,800	0.00%	\$6,200,132	\$3,356,714	\$2,843,418
10801	Fortress Ins Co	\$32,360	0.00%	\$62,794,935	\$34,870,382	\$27,924,553
11267	Security Amer RRG Inc	\$31,788	0.00%	\$4,123,545	\$1,600,621	\$2,522,924
10243	National Continental Ins Co	\$31,586	0.00%	\$251,708,138	\$203,816,365	\$47,891,773
13285	Allegheny Cas Co	\$31,214	0.00%	\$33,369,163	\$14,863,494	\$18,505,753
10232	American Assoc Of Othodontists RRG	\$30,550	0.00%	\$34,424,422	\$24,959,314	\$9,465,108
29823	Genworth Residential Mortgage Ins Co	\$29,408	0.00%	\$227,478,841	\$122,729,984	\$104,748,857
36765	Gulf Guar Ins Co	\$29,377	0.00%	\$5,077,249	\$1,060,989	\$4,016,258
10113	Terra Ins Co RRG	\$29,260	0.00%	\$27,001,100	\$11,409,284	\$15,591,816
16667	United Guar Residential Ins Co of NC	\$22,965	0.00%	\$417,173,770	\$159,334,926	\$257,838,844
13792	New Home Warranty Ins Co a RRG	\$22,488	0.00%	\$9,994,426	\$4,993,489	\$5,000,937
11153	Titan Ins Co Inc RRG	\$22,394	0.00%	\$30,812,685	\$6,173,808	\$24,638,877
45934	American Compensation Ins Co	\$22,089	0.00%	\$64,341,391	\$12,558,587	\$51,782,804
30112	CNL Ins Amer Inc	\$20,541	0.00%	\$35,379,568	\$13,808,385	\$21,571,183
10164	Cpa Mut Ins Co Of Amer RRG	\$19,905	0.00%	\$22,207,026	\$11,539,144	\$10,667,882
11710	Allied Professionals Ins Co RRG	\$17,900	0.00%	\$24,157,460	\$12,807,717	\$11,349,743
10758	Colonial Surety Co	\$17,072	0.00%	\$44,014,886	\$21,587,386	\$22,427,500
12873	Privilege Underwriters Recp Exch	\$14,238	0.00%	\$110,956,108	\$59,511,959	\$51,444,148
13179	ProAir RRG Inc	\$13,855	0.00%	\$634,373	\$118,181	\$516,192
34347	Colonial Amer Cas & Surety Co	\$13,546	0.00%	\$25,555,270	\$1,978,295	\$23,576,975
41238	Trans Pacific Ins Co	\$12,568	0.00%	\$63,546,945	\$14,464,200	\$49,082,745
15911	American Mining Ins Co Inc	\$12,531	0.00%	\$31,192,147	\$6,370,288	\$24,821,859
13580	ARISE Boiler Inspection & Ins Co RRG	\$12,252	0.00%	\$2,384,334	\$660,911	\$1,723,423
40169	Metropolitan Cas Ins Co	\$11,701	0.00%	\$188,801,932	\$141,433,113	\$47,368,819
11123	Safety First Ins Co	\$11,442	0.00%	\$16,556,372	\$2,825,411	\$13,730,961
12190	American Pet Ins Co	\$11,270	0.00%	\$12,628,672	\$2,438,365	\$10,190,308
28860	RLI Ind Co	\$10,423	0.00%	\$42,377,204	\$953,243	\$41,423,961
26999	United Guar Mortgage Ind Co	\$10,388	0.00%	\$390,220,659	\$296,935,745	\$93,284,914

Property and Casualty (Cont.)

NAIC	Company Name	AR Premium	Market Share	Assets	Liabilities	Capital & Surplus
10003	Excess Share Ins Corp	\$10,203	0.00%	\$51,220,513	\$30,773,306	\$20,447,207
19178	Southern Guar Ins Co	\$9,220	0.00%	\$145,143,487	\$105,410,620	\$39,732,867
11231	Generali Us Branch	\$9,047	0.00%	\$70,695,497	\$47,893,274	\$22,802,223
27081	Bond Safeguard Ins Co	\$8,820	0.00%	\$79,412,244	\$47,898,037	\$31,514,207
16810	American Mercury Ins Co	\$7,448	0.00%	\$315,097,669	\$197,626,397	\$117,471,271
24104	Ohio Farmers Ins Co	\$7,358	0.00%	\$1,915,579,522	\$553,869,272	\$1,361,710,250
26581	Independence Amer Ins Co	\$7,333	0.00%	\$73,429,385	\$22,963,718	\$50,465,667
11177	First Fin Ins Co	\$7,131	0.00%	\$519,652,873	\$154,274,928	\$365,377,945
36560	Service Ins Co	\$6,901	0.00%	\$26,500,165	\$5,285,703	\$21,214,462
32859	Penn Amer Ins Co	\$6,819	0.00%	\$298,207,929	\$118,013,748	\$180,194,181
36340	Camico Mut Ins Co	\$6,510	0.00%	\$117,144,242	\$79,717,844	\$37,426,397
37621	Toyota Motor Ins Co	\$6,465	0.00%	\$422,784,731	\$265,479,920	\$157,304,811
24678	Arrowood Ind Co	\$6,266	0.00%	\$1,727,423,349	\$1,433,019,788	\$294,403,560
39039	Rural Comm Ins Co	\$5,869	0.00%	\$6,023,734,317	\$5,438,355,680	\$585,378,637
41211	Triton Ins Co	\$5,838	0.00%	\$633,204,322	\$341,203,333	\$292,000,989
22276	Stonewall Ins Co	\$5,739	0.00%	\$96,670,339	\$27,854,874	\$68,815,464
21075	Financial Amer Prop & Cas Ins Co	\$5,736	0.00%	\$12,546,070	\$2,943,834	\$9,602,236
22985	Sequoia Ins Co	\$5,082	0.00%	\$217,943,459	\$144,328,619	\$73,614,840
13720	CrossFit RRG Inc	\$5,018	0.00%	\$1,433,022	\$743,403	\$689,619
13018	Doctors & Surgeons Natl RRG Inc	\$4,019	0.00%	\$7,583,402	\$5,374,863	\$2,208,539
40940	Western Pacific Mut Ins Co RRG	\$3,880	0.00%	\$133,709,581	\$48,467,991	\$85,241,590
39527	Heritage Ind Co	\$3,808	0.00%	\$204,134,227	\$108,241,763	\$95,892,465
11114	St Charles Ins Co RRG	\$3,332	0.00%	\$10,521,831	\$5,309,608	\$5,212,223
20796	21st Century Premier Ins Co	\$3,152	0.00%	\$252,091,036	\$30,626,571	\$221,464,465
12293	National Contractors Ins Co Inc RRG	\$3,138	0.00%	\$13,143,077	\$9,153,090	\$3,989,987
26905	Century Natl Ins Co	\$3,134	0.00%	\$513,308,997	\$186,552,476	\$326,756,521
11197	National Independent Truckers IC RRG	\$3,126	0.00%	\$8,368,763	\$3,222,224	\$5,146,539
13677	Affiliates Ins Recip a RRG	\$3,066	0.00%	\$3,836,082	\$875,209	\$2,960,873
11523	Fidelity Natl Ind Ins Co	\$2,936	0.00%	\$35,517,952	\$26,450,700	\$9,067,252
42862	Universal Cas Co	\$2,775	0.00%	\$57,212,441	\$48,427,550	\$8,784,891
19399	AIU Ins Co	\$2,707	0.00%	\$2,637,990,598	\$2,042,387,965	\$595,602,633
43273	Insurors Ind Co	\$2,180	0.00%	\$17,410,935	\$7,146,126	\$10,264,809
22713	Insurance Co of N Amer	\$1,871	0.00%	\$755,646,710	\$575,138,023	\$180,508,687
10054	Securian Cas Co	\$1,786	0.00%	\$98,365,017	\$39,274,411	\$59,090,606
12294	Southwest Marine & Gen Ins Co	\$1,650	0.00%	\$78,497,179	\$41,225,787	\$37,271,392
11579	Old Glory Ins Co	\$1,597	0.00%	\$18,612,422	\$9,902,320	\$8,710,102
22950	Acstar Ins Co	\$1,479	0.00%	\$74,237,632	\$45,759,582	\$28,478,050
22861	Southern Pilot Ins Co	\$1,377	0.00%	\$44,364,275	\$33,489,042	\$10,875,233
22241	Medmarc Cas Ins Co	\$1,292	0.00%	\$91,990,614	\$48,869,823	\$43,120,791
12839	Road Contractors Mut Ins Co	\$1,268	0.00%	\$9,332,480	\$5,468,676	\$3,863,803
10234	National Serv Contract Ins Co RRG	\$1,159	0.00%	\$9,362,832	\$1,709,174	\$7,653,658
23434	Middlesex Ins Co	\$1,080	0.00%	\$622,230,238	\$387,093,547	\$235,136,691
22810	Chicago Ins Co	\$1,078	0.00%	\$188,284,728	\$131,199,108	\$57,085,619
31453	Financial Pacific Ins Co	\$1,012	0.00%	\$257,786,445	\$183,233,684	\$74,552,761
10991	Global Intl Ins Co Inc A RRG	\$880	0.00%	\$19,078,145	\$678,237	\$18,399,908
10749	Intrepid Ins Co	\$832	0.00%	\$30,391,047	\$2,523,321	\$27,867,726
11145	Golden Ins Co RRG	\$729	0.00%	\$4,732,282	\$2,384,874	\$2,347,408
11063	Vehicular Serv Ins Co RRG	\$590	0.00%	\$2,694,381	\$483,663	\$2,210,718
11258	Georgia Cas & Surety Co	\$576	0.00%	\$38,134,071	\$21,980,040	\$16,154,031
25933	Universal Surety Co	\$515	0.00%	\$113,748,855	\$30,949,114	\$82,799,741
37940	Lexington Natl Ins Corp	\$500	0.00%	\$49,811,535	\$32,694,775	\$17,116,760
29033	Atain Ins Co	\$500	0.00%	\$39,301,954	\$16,582,416	\$22,719,538
11030	Memic Ind Co	\$424	0.00%	\$184,864,774	\$116,405,111	\$68,459,663
18759	Genworth Residential Mortgage Assur	\$290	0.00%	\$77,192,673	\$5,001,875	\$72,190,798

Property and Casualty (Cont.)

NAIC	Company Name	AR Premium	Market Share	Assets	Liabilities	Capital & Surplus
18694	Great Midwest Ins Co	\$213	0.00%	\$71,353,768	\$21,327,317	\$50,026,451
10724	Eastern Alliance Ins Co	\$188	0.00%	\$159,804,969	\$106,911,757	\$52,893,212
16675	Genworth Mortgage Ins Corp Of NC	\$186	0.00%	\$444,972,987	\$344,184,275	\$100,788,712
19844	Argonaut SW Ins Co	\$176	0.00%	\$16,947,661	\$436,222	\$16,511,439
27073	Nipponkoa Ins Co Ltd US Br	\$77	0.00%	\$247,191,885	\$156,867,606	\$90,324,280
30562	American Manufacturers Mut Ins Co	\$21	0.00%	\$10,191,517	\$67,885	\$10,123,632
10810	Republic Fire & Cas Ins Co	\$2	0.00%	\$8,863,020	\$103,634	\$8,759,386
	TOTAL	\$4,007,632,181	100.00%			

Title

NAIC	Company Name	AR Premium	Market Share	Assets	Liabilities	Capital & Surplus
50121	Stewart Title Guar Co	\$11,925,740	30.38%	\$901,268,313	\$531,757,324	\$369,510,989
50229	Chicago Title Ins Co	\$7,819,114	19.92%	\$1,887,886,838	\$1,246,001,911	\$641,884,927
50814	First Amer Title Ins Co	\$6,314,225	16.09%	\$2,238,425,503	\$1,383,802,527	\$854,622,976
51586	Fidelity Natl Title Ins Co	\$6,288,227	16.02%	\$1,326,417,510	\$1,090,145,020	\$236,272,490
50520	Old Republic Natl Title Ins Co	\$5,692,096	14.50%	\$674,680,222	\$473,673,722	\$201,006,500
50792	Southern Title Ins Corp	\$536,695	1.37%	\$23,747,153	\$16,966,982	\$6,780,171
50784	Security Title Guarantee Corp Baltim	\$322,629	0.82%	\$11,049,099	\$8,336,633	\$2,712,466
50083	Commonwealth Land Title Ins Co	\$173,788	0.44%	\$615,675,531	\$401,842,255	\$213,833,276
12522	Agents Natl Title Ins Co	\$144,234	0.37%	\$3,894,188	\$2,146,210	\$1,747,978
51152	WFG Natl Title Ins Co	\$19,490	0.05%	\$15,776,017	\$5,571,020	\$10,204,997
51411	American Guar Title Ins Co	\$9,073	0.02%	\$16,035,610	\$3,967,047	\$12,068,563
50369	Investors Title Ins Co	\$2,917	0.01%	\$105,862,923	\$58,074,463	\$47,788,460
51632	EnTitle Ins Co	\$2,246	0.01%	\$14,177,798	\$8,145,565	\$6,032,233
	TOTAL	\$39,250,474	100.00%			