

Arkansas Insurance Department

2014 Annual Report

Report for Period
January 1, 2014 to December 31, 2014
Inclusive



1200 West Third Street
Little Rock, AR 72201-1904
1-501-371-2600, 1-800-282-9134
www.insurance.arkansas.gov

THIS PAGE INTENTIONALLY LEFT BLANK



The Honorable Asa Hutchinson, Governor of Arkansas

I am pleased to present to you the 2014 Annual Report of the Arkansas Insurance Department. This report is established by the provisions of Arkansas Code Ann. § 23-61-112 and summarizes the activities of the Arkansas Insurance Department for the calendar year ending December 31, 2014.

In addition to the required financial disclosures and listing of companies operating in Arkansas, this report highlights the work of the Arkansas Insurance Department on behalf of Arkansas insurance consumers.

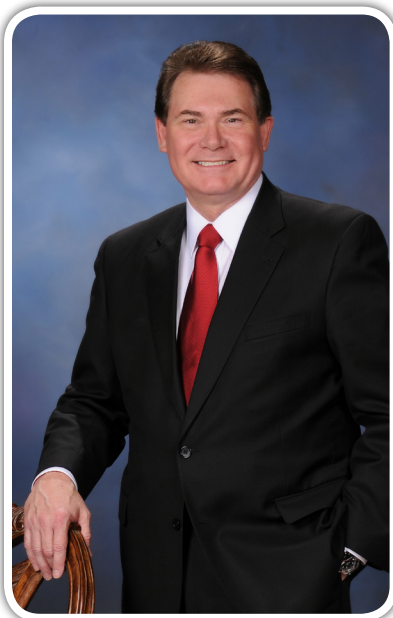
Sincerely,

A handwritten signature in black ink, appearing to read "Allen W. Kerr".

Allen W. Kerr
Insurance Commissioner

Table of Contents

A Message from the Commissioner	1
History of Insurance Commissioners	2
AID Leadership Team	5
AID Divisions and Programs	6
AID Receipts, Revenue Distribution and Expenditures	9
AID Services:	
Consumer Complaints and Inquiries	10
Consumer Recoveries	10
Medicare Recipients Served	10
Producers & Business Entities (Agents and Agencies)	11
New Company Admissions	11
Total Licensed Companies	11
AID Examinations:	
Financial Examinations	12
Financial Analysis	12
Prepaid Funeral Benefits Contracts	12
Insurance Fraud Investigations	12
Legal Proceedings	12
Liquidations and Rehabilitations	12
Insurers Listed by Arkansas Premium as of 12/31/2014	
Domestic Surplus Lines	13
Farmers Mutual Aid Associations	13
Fraternal Organizations	13
HMO and HMDI Companies	13
Life and Health Companies	14
Property and Casualty Companies	22
Title Companies	34



A Message From the Commissioner

Having spent over 30 years in the insurance industry as a producer and small business owner, it is my distinct honor to present my first annual report as Commissioner of the “new” Arkansas Insurance Department (AID). A “new” philosophy has been installed at AID. While our agency is primarily one of consumer protection, we understand there is a delicate balance between regulation and encouraging the growth of business. Responsibility and common sense is the new order of the day.

We are still committed to protecting consumers, but AID is equally committed to being pro-business and pro-producer. Ensuring that insurers are solvent and capable of paying claims, remaining vigilant against fraud, and safeguarding a fair and lawful market is beneficial to both the businesses we regulate and the hardworking Arkansas consumers for whom we work.

As part of our new philosophy, we are committed to lessening the hassles producers have previously encountered from the state. For example, we are in the process of improving our pre-licensing education program - bringing it up to date by putting courses online and giving producers the freedom of not having to sit in a classroom.

Since becoming Insurance Commissioner in January, I have been asked several times about my goals for AID, and what my emphasis will be. Those are very easy questions to answer as my goal and my emphasis are one and the same:

- To lessen the regulatory hassles and grow the insurance and finance business in our state, and
- To make sure everyone across the nation knows that Arkansas is open for business.

I hope upon review of the information contained in this report, you will agree that our professionals at AID do an excellent job of representing the people of Arkansas, while working to ensure the insurance industry in our state continues to grow, adding important jobs that will grow Arkansas’s economy

It is my pleasure to serve you.

Mission Statement

The purpose of the State Insurance Department is to serve and protect the public interest by the equitable enforcement of the state’s laws and regulations affecting the insurance industry.

The primary mission of the State Insurance Department shall be consumer protection through insurer solvency and market conduct regulation, and fraud prosecution and deterrence.

History of Insurance Commissioners

AUDITORS OF STATE

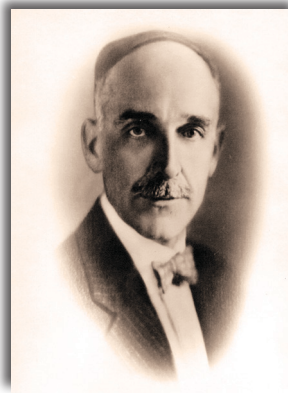
The work of the Insurance Department was formerly placed by law in the office of the Auditor of State. The "Insurance Bureau" was established in the Auditor's office by the Act of April 25, 1873, the Auditor being charged by same with the execution of the laws of the state relating to insurance.

The General Assembly of 1917, by Act No. 190, approved March 7, 1917, on account of the greatly increased volume of work required to be done by the insurance department, separated same from the office of the Auditor of State and created the State Insurance Department. The head of the Insurance Department shall be an Insurance Commissioner appointed by the Governor with the advice and consent of the Senate. The Insurance Commissioner shall enforce the provisions of the Arkansas Insurance Code and shall execute the duties imposed upon him or her by the Arkansas Insurance Code.

Ex-officio Commissioners of Insurance

1873 - 1874	Stephen Wheeler	
1874 - 1877	W. R. Miller	
1877 - 1882	John Crawford	
1883 - 1886	A. W. Files	(Died in office. W. R. Miller was appointed to fulfill the unexpired term.)
1887 - 1892	W. S. Dunlap	
1893 - 1896	C. B. Miles	
1897 - 1900	Clay Sloan	
1901 - 1904	T. C. Monroe	
1905 - 1908	A. E. Moore	
1909 - 1912	John R. Jobe	
1912 - 1913	John N. Oathout	(Elected Auditor September 1912, died June 20, 1913. L. Coffman appointed June 23, 1913.)
1913 - 1914	L. L. Coffman	(Resigned March 4, 1914. M. F. Dickinson was appointed to fulfill the unexpired term.)
1915 - 1916	M. F. Dickinson	

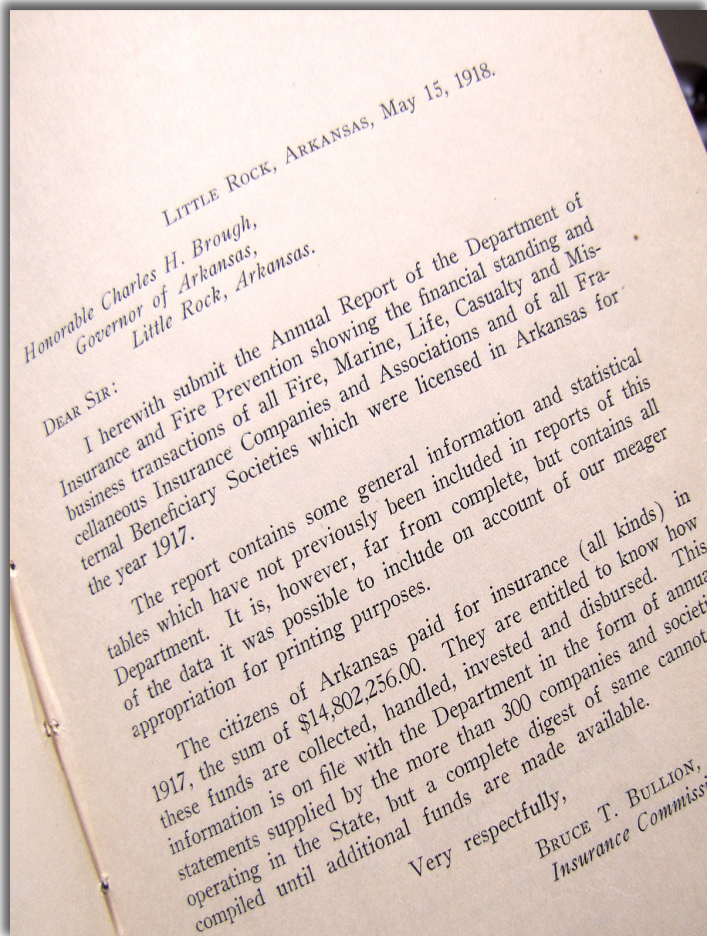
INSURANCE COMMISSIONERS



1917-1924
Bruce T. Bullion



1924-1925/1937-1941
M. J. Harrison

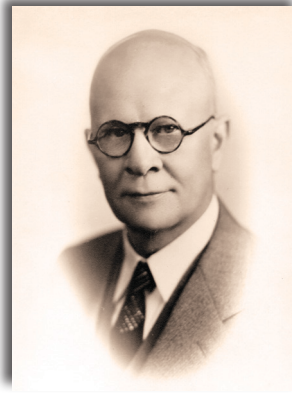




1925-1927/1929-1931
W. E. Floyd



1927-1929
J. S. Maloney



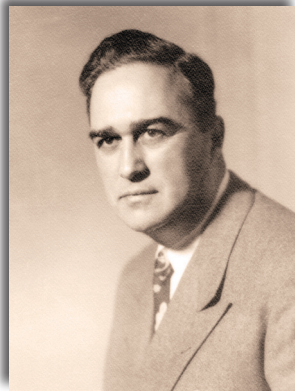
1931-1933
A. D. Dulaney



1933-1937
U. A. Gentry



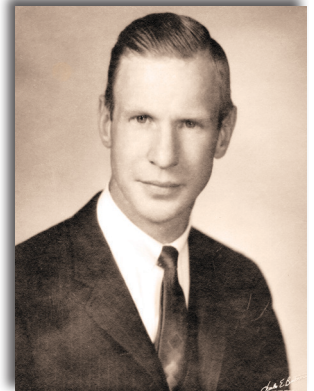
1941-1945/1949-1953
J. Herbert Graves



1945-1949
Jack McKenzie



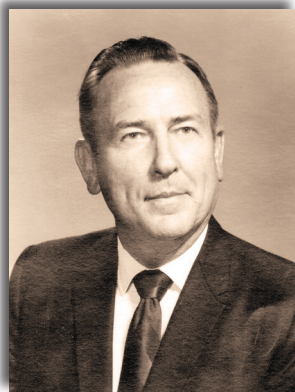
1953-1967
Harvey G. Combs



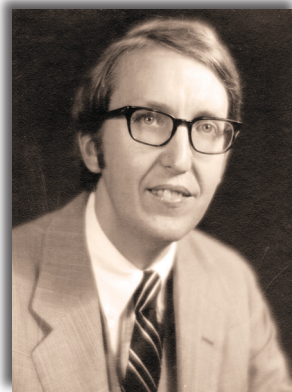
1967-1968
John Norman Harkey



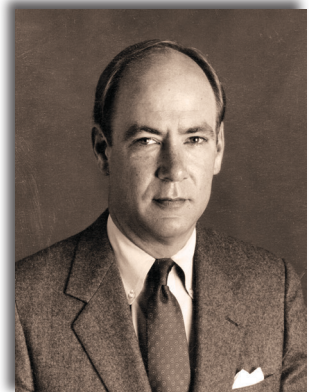
1968-1970
Allen W. Horne



1970-1972
A. Gene Sykes



1972-1976
Ark Monroe, III



1976-1982
*W. H. L. Woodyard, III



1983-1985
Linda N. Garner



1985-1988
Robert M. Eubanks, III



1988 - 1990
Ron Taylor



1990-1996
*Lee Douglass



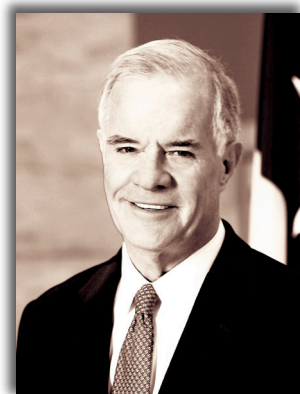
1997-2005
*Mike Pickens



2005-2008
Julie Benafield Bowman



2009
Lenita Blasingame



2009-2015
Jay Bradford



2015
Allen Kerr

*President of the National Association of Insurance Commissioners (NAIC)

The Arkansas Insurance Department is accredited by the NAIC. To achieve this accreditation, the Department must meet stringent national standards that demonstrate it effectively regulates insurance companies for solvency. The Arkansas Insurance Department views accreditation by the NAIC as an important part of our commitment to the citizens of Arkansas. Accreditation standards enable us to provide expanded consumer protections and to institute and maintain the highest standards in financial regulation. NAIC repeats the accreditation review every five years to confirm that the Department continues to meet all requirements. The Department was most recently accredited in March 2011.

AID Leadership Team

ADMINISTRATION

Allen Kerr, State Insurance Commissioner 501-371-2621 Allen.Kerr@arkansas.gov
Russ Galbraith, Chief Deputy Commissioner 501-371-2820 Russ.Galbraith@arkansas.gov
Ryan James, Communications Director 501-371-2622 Ryan.James@arkansas.gov

ACCOUNTING

Courtney Traylor, Deputy Commissioner 501-371-2605 Courtney.Traylor@arkansas.gov

COMPLIANCE

Bill Lacy, Manager 501-371-2800 Bill.Lacy@arkansas.gov

CONSUMER SERVICES

Jackie Smith, Consumer Protection Manager 501-371-2640 Jackie.Smith@arkansas.gov

CRIMINAL INVESTIGATION

Greg Sink, Director 501-371-2790 Greg.Sink@arkansas.gov

FINANCE

Mel Anderson, Deputy Commissioner Financial Regulation 501-371-2665 Mel.Anderson@arkansas.gov

HEALTH INSURANCE PREMIUM RATE REVIEW

Dan Honey, Deputy Commissioner 501-683-3146 Dan.Honey@arkansas.gov

HUMAN RESOURCES

Andrea May, Personnel Manager 501-371-2818 Andrea.May@arkansas.gov

INFORMATION SYSTEMS

Carder Hawkins, Deputy Commissioner Information Services 501-371-2657 Carder.Hawkins@arkansas.gov

LEGAL

Suzanne Tipton, Deputy Commissioner & General Counsel 501-371-2820 Suzanne.Tipton@arkansas.gov

LICENSE

Peggy Dunlap, Licensing Manager 501-371-2750 Peggy.Dunlap@arkansas.gov

LIQUIDATION

Steve Uhrynowycz, Deputy Receiver 501-371-2776 Steve.Uhrynowycz@arkansas.gov

PUBLIC EMPLOYEE CLAIMS

Nathan Culp, Director 501-371-2700 Nathan.Culp@arkansas.gov

RISK MANAGEMENT

Drew Carpenter, Director 501-371-2690 Drew.Carpenter@arkansas.gov

REGULATORY HEALTH LINK

Zane Chrisman, Deputy Commissioner 501-683-4170 Zane.Chrisman@arkansas.gov

SENIOR HEALTH INSURANCE INFORMATION PROGRAM (SHIIP)

Amanda White, Program Manager 501-371-2782 Amanda.N.White@arkansas.gov

AID Divisions and Programs

ADMINISTRATION

501-371-2620

insurance.administration@arkansas.gov

The Administration Division oversees the overall operations of Arkansas Insurance Department (AID), establishes Department policy, handles media inquiries, security, and coordinates consumer protection and outreach activities. Each of the divisions work collectively to ensure the Department's mission of consumer protection is fulfilled. This staff of approximately 200 highly skilled and dedicated employees is committed to serving the citizens of Arkansas every day.

ACCOUNTING

501-371-2605

insurance.accounting@arkansas.gov

The Accounting Division collects and oversees fees and premium taxes from all insurance companies conducting business in the State of Arkansas. These fees not only fund AID (no monies are received from the state's General Revenue Fund), but the taxes are also used to contribute to the state's Police and Firemen Pension Funds, and General Revenue. The division handles all purchasing and accounts payable for AID, as well as the development of budgets.

COMPLIANCE

501-371-2800

insurance.LnH@arkansas.gov

insurance.PnC@arkansas.gov

Life & Health (L&H) is responsible for the review and approval of life and health forms, rates, and advertising. L&H must approve premiums for individual health policies, and must ensure that benefits on health policies provide an acceptable relationship to the premiums charged. L&H reviews contracts for guaranteed interest policies, including life and annuity and variable contracts, equity indexed annuities, funeral insurance, credit life and disability, individual and group health plans, long-term care, Medicare supplements and supplemental benefits contracts, as well as contracts for health maintenance organizations (HMOs).

Property & Casualty (P&C) is responsible for monitoring and regulating rate and form filing activities. All insurance companies transacting business in the State of Arkansas for surety, workers' compensation, and all other property and casualty coverage must submit their forms to P&C for approval. The forms are then reviewed to ensure compliance with state law. For most lines of insurance, Arkansas is considered a "competitive rating state" and, as such, requests for rate changes are effective 20 days after they are filed unless those changes are excessive, inadequate, or unfairly discriminatory.

CONSUMER SERVICES

501-371-2640 or 800-852-5494

insurance.consumers@arkansas.gov

The Consumer Services Division (CSD) assists insurance consumers with complaints and inquiries regarding insurance companies, producers, and adjusters. CSD investigates all complaints, working with the insurance company and the consumer to determine the appropriate course of action. CSD travels statewide to provide educational information and materials, and in the event of significant storm damage, travels to damaged areas to assist homeowners with filing claims and procuring emergency living expenses.

CRIMINAL INVESTIGATION

501-371-2790 or 866-660-0888

insurance.fraud@arkansas.gov

The Criminal Investigation Division (CID) receives hundreds of referrals of suspected fraud each year. CID investigates and prosecutes all categories of insurance fraud. Investigations that result in a finding of a criminal violation are referred to the appropriate prosecuting attorney's office.

FINANCE

501-371-2665

insurance.finance@arkansas.gov

The primary goal of the Finance Division is to protect insurance consumers through effective solvency regulation by monitoring the financial condition of all domestic and foreign insurance companies operating in the state; conducting financial and market conduct examinations; reviewing other financial information and reports filed by insurance entities, such as business plans, reinsurance agreements, merger and acquisition documents, company formation documents,

market research and feasibility studies; reviews and approves the licensing of insurers, captives, risk retention groups, surplus lines, charitable annuities, continuing care facilities, motor clubs, reinsurance intermediaries, service contract providers, and accredited/trusteed reinsurers; examines prepaid funeral contracts and conducts financial examinations of licensees' trust funds and custodial accounts; and oversees statutory security deposits of insurance companies.

HEALTH INSURANCE PREMIUM RATE REVIEW 501-683-3146

insurance.hirr@arkansas.gov

The Health Insurance Premium Rate Review Division (HIRRD) was created in 2010 for the purpose of protecting consumers and employers from unreasonable health insurance premium rate increases. With funding through the Department of Health and Human Services (HHS), HIRRD has endeavored to create a health insurance education, outreach and training unit to improve the health insurance rate review and reporting process. The development of an Arkansas All-Payer Claims Database (APCD), in collaboration with the Arkansas Center for Health Improvement (ACHI), is a HIRRD project which will ultimately provide medical pricing information to support consumers and other stakeholders when making health-care decisions. Additionally, pursuant to Act 1233 of 2015, AID is charged with implementing further healthcare transparency initiatives. HIRRD will be the division primarily responsible for these efforts.

HUMAN RESOURCES

501-371-2818

insurance.human.resources@arkansas.gov

The Human Resources Division is responsible for the recruiting and hiring process, benefits, compensation and retirement, employee training and development, compliance with employment laws and regulations, and personnel budget preparation and management.

INFORMATION SYSTEMS

501-371-2657

insurance.information.systems@arkansas.gov

The Information Systems Division (IS) keeps AID operating effectively and efficiently in the ever-changing world of technology. This is achieved through the IS strategy of leveraging up-to-date, state of the art software and systems technology to continually increase productivity. The result is minimal growth in the number of AID staff in the face of continued growth in the size of the regulated industry and revenue.

LEGAL

501-371-2820

insurance.legal@arkansas.gov

The Legal Division represents AID, participating in numerous investigations, market conduct examinations, drafting legislation, rules, bulletins, directives, legal opinions, and investigating consumer complaints. Division attorneys represent the Commissioner and AID staff in lawsuits or other proceedings, administrative hearings and court appeals pertaining to alleged licensee insurance code or rule violations by a licensee, and insurance company acquisitions, mergers, reinsurance agreements and similar transactions. Prior to each Legislative Session, the Division prepares the recommendations of the Commissioner as to amendments or supplementation of laws affecting insurance and as to matters affecting the Department to be addressed in the next Legislative Session. Legislation passed during the most recent non-budget session can be viewed at www.insurance.arkansas.gov/Legal/Bulletins/9-2015.pdf.

LICENSE

501-371-2750

insurance.license@arkansas.gov

The Licensing Division is responsible for the licensing of resident and nonresident producers, adjusters, title agents, and business entities that are soliciting, selling or negotiating insurance in the State of Arkansas. License oversees the producer examinations and investigates all resident applicants by reviewing Arkansas State Police records. It also ensures that necessary laws are followed regarding license renewals and continuing education.

LIQUIDATION

501-371-2776

insurance.liquidation@arkansas.gov

The Liquidation Division, acting on behalf of the Insurance Commissioner as Receiver, manages the day to day affairs of insolvent insurance company estates and insolvent prepaid funeral benefit trusts. Although the Liquidation Division performs certain functions on behalf of the Commissioner, individuals employed with this division are not employed by the State of Arkansas and are not considered state employees. Liquidation does not receive any funding from the State

of Arkansas. Liquidation administers the Arkansas Life and Health Insurance Guaranty Association (ALHIGA) and the Arkansas Property & Casualty Guaranty Fund (APCGF). During 2014, APCGF paid over \$2,029,922 to adjust, settle or litigate claims and recovered over \$1,284,150 as a result of twenty non-domestic and one domestic insurance company receiverships. During 2014, ALHIGA provided benefits to Arkansas insureds and claimants totaling more than \$1,364,670 and recovered over \$4,320,220 as a result of two domestic and five non-domestic insurance company receiverships.

PUBLIC EMPLOYEE CLAIMS

501-371-2700

insurance.public.employee.claims@arkansas.gov

The Public Employee Claims Division (PECD) is responsible for the investigation and management of more than 3,800 workers' compensation claims filed each year for Arkansas state employees. Workers' compensation coverage is also provided for emergency service volunteers who are accidentally injured while performing services under the call and supervision of the State of Arkansas. PECD encourages state agencies to implement safety programs, hoping to reduce the number of injuries suffered by state employees. PECD personnel give presentations to several audiences each year. The prevention of injuries helps in three areas: 1) improving the quality of life of employees; 2) helping agencies with staffing issues; and 3) reducing workers' compensation costs for the taxpayers of the State of Arkansas.

REGULATORY HEALTH LINK

501-683-4170

insurance.rhld@arkansas.gov

The Regulatory Health Link Division (RHLD) was established in accordance with the Patient Protection and Affordable Care Act (PPACA) of 2010. RHLD is responsible for recommending for certification and monitoring health insurance plans sold through the Arkansas Health Insurance Marketplace (AHIM) and the Federally Facilitated Marketplace (FFM), and licensing and training for Marketplace producers and other assisters.

RISK MANAGEMENT

501-371-2690

insurance.risk.management@arkansas.gov

The Risk Management Division (Risk) was established to minimize the cost of insurance and surety bonding to Arkansas state agencies, and to analyze and make recommendations on loss control and safety programs in an effort to protect state assets. In 2004, Risk assumed the responsibility of providing insurance coverage, consulting, and loss control services to public schools that choose to participate in the Public School Property and Vehicle Insurance Trust Fund. Property inspections and appraisals are conducted on approximately 5,500 state owned and leased structures, and 2,500 school district structures with insured values of \$13 billion. A vehicle safety program covering 5,500 state agency and 5,000 public school vehicles has been in effect for many years, resulting in improved loss ratios. Risk also offers on-site advanced defensive driver training at no cost to state agencies and participating schools.

SENIOR HEALTH INSURANCE INFORMATION PROGRAM

insurance.SHIIP@arkansas.gov

501-371-2782 or 800-224-6330

The job of the Senior Health Insurance Information Program (SHIIP) is to help Arkansans save money and make informed decisions about Medicare. SHIIP recruits and trains a volunteer network throughout the state to provide in-person information, assistance, and presentations as well as help at community events and health fairs. SHIIP produces the Medicare Basic Toolkit and Bridging the Gap publications, both of which are available on the SHIIP website: <http://insurance.arkansas.gov/shiip.htm>. In addition, SHIIP staff and volunteers assist Medicare beneficiaries with applications for Medicare subsidy programs such as the Medicare Savings Programs and Extra Help, enabling recipients to save thousands of dollars annually on Medicare premiums and co-pays.



AID Receipts, Revenue Distribution and Expenditures

Fiscal Year 2014 Receipts

Insurance Department Trust Fund.....	\$ 21,803,968.92
Federal Funds	27,201,102.12
Premium & Other Taxes	184,820,775.20
Licenses, Permits and Fees	26,732,922.35
	\$260,558,768.59

Distribution of Revenues

General Revenue	\$117,417,730.53
Police & Firemen Pension Funds	55,548,807.70
Insurance Department Funds:	
Agent License	10,949,709.50
Policy Filing Fees	15,035.00
Copies	633.50
Examiner Travel Expense Reimbursement	35,235.01
Governmental Bonding Board Restitution	113,044.15
Continuing Education Fees.....	118,550.00
Pre-Paid Funeral Fees	381,774.83
Workers' Compensation Qualification Fees	1,500.00
AMAIT – State Fleet and Property Insurance	6,974,955.03
Insurance Department Trust Fund Fees	21,803,968.92
Pre-Paid Funeral Fees	2,595.00
Criminal Investigation Assessment.....	666,421.00
Criminal Background Checks – Agents.....	134,632.00
School – Auto/Property Insurance.....	7,171,737.33
Bail Bond Fees	167,100.00
Federal Grant Draws*	27,201,102.12
Fire Protection Revolving Fund.....	11,854,236.97
Total Insurance Department Funds.....	87,592,230.36
	\$260,558,768.59

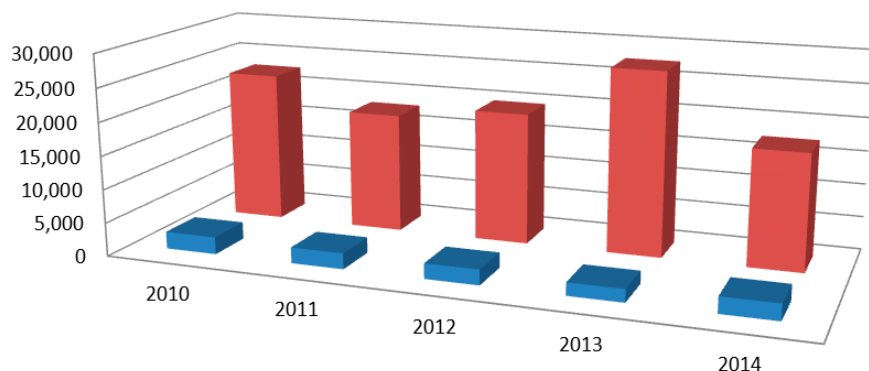
Fiscal Year 2014 Expenditures

Regulatory Services (Insurance Department Budget).....	\$12,445,243.00
--	------------------------

* Arkansas Health Connector, Consumer Assistance Program, Health Insurance Premium Rate Review, Senior Health Insurance Information Program

AID Services

Complaints and Inquiries



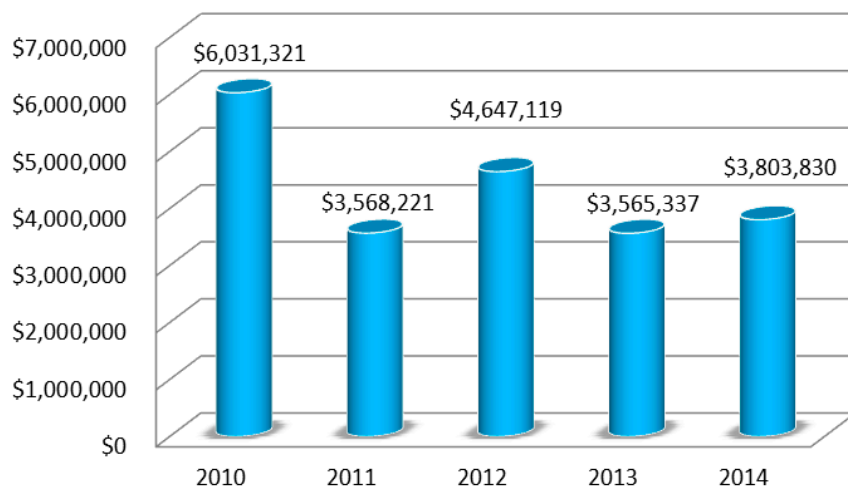
■ A complaint is a written grievance filed by an insurance consumer or their advocate with our Consumer Services Division (CSD).

■ Inquiries are informal questions answered by a CSD representative.

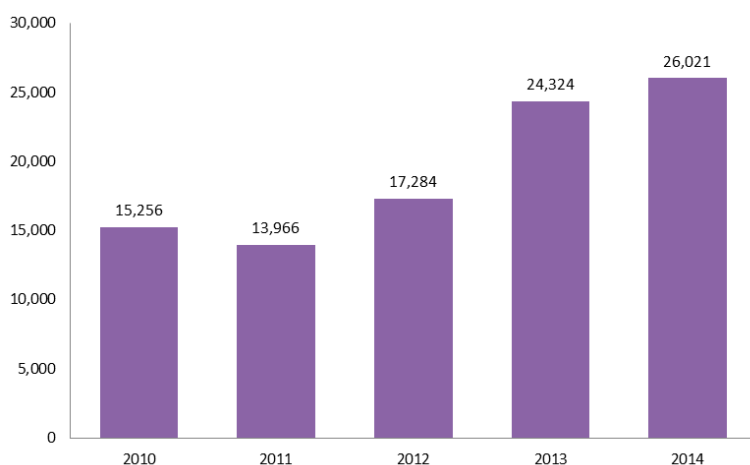
	2010	2011	2012	2013	2014
■ Inquiries	2,584	2,391	2,308	1,933	2,432
■ Complaints	22,810	18,048	19,801	27,646	17,495

Recoveries

Recoveries are amounts recovered for consumers by CSD in excess of the amount initially offered by insurance companies.



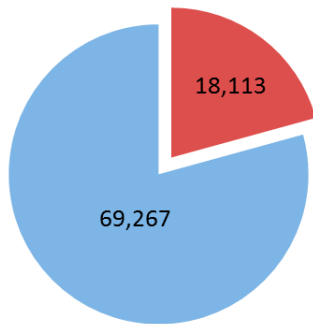
Medicare Recipients Served



The Senior Health Insurance Information Program (SHIIP) provides Medicare counseling, education and assistance to Medicare beneficiaries and their caregivers.

Producers and Business Entities (Agents and Agencies)

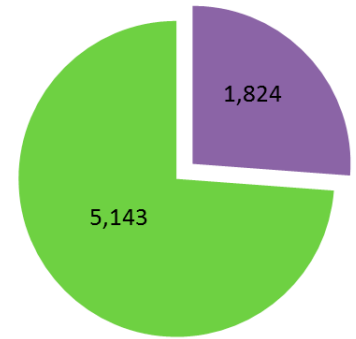
Producers and Adjusters



■ Resident ■ Nonresident

AID License Division licenses resident and nonresident producers, adjusters, title agents and business entities that are soliciting, selling or negotiating insurance in the State of Arkansas. "Resident" means the producer or business entity is based in Arkansas.

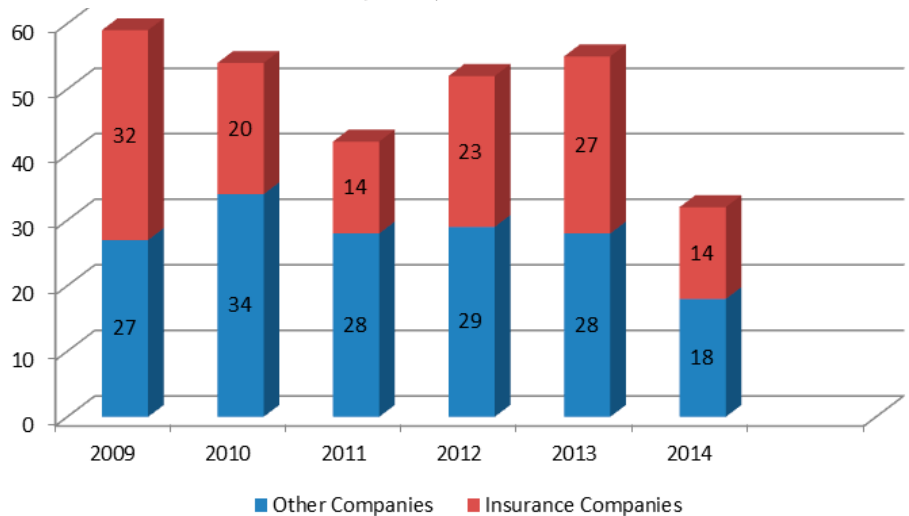
Business Entities



■ Resident ■ Nonresident

New company admissions are subject to in-depth analysis by our Finance Division. AID admitted 14 new insurance companies and 18 other companies in 2014. Other companies include automobile clubs, risk retention groups, charitable gift annuity organizations, service contract providers, Accredited/Trusted Reinsurers, and surplus lines.

New Company Admissions



■ Other Companies ■ Insurance Companies

Total Licensed Companies and Other Regulated Entities

Licensed Insurance Companies	1,547
Domestic (Arkansas) Insurers.....	54
Foreign Insurers.....	1,493
Accredited/Trusted Reinsurers	29
Automobile/Motor Club Associations	20
Charitable Gift Annuity Organizations	183
Continuing Care Facilities	8
Portable Electronic	14
Portable Electronic Limited	21
Reinsurance Intermediaries Brokers	16
Reinsurance Intermediaries Managers	4
Self Storage Insurance	27
Service Contract Providers	95
Surplus Lines Insurers	214
Domestic (Arkansas).....	2
Foreign.....	142
Alien (non U.S.A.).....	70

AID Examinations

Financial Examinations

Domestic Life Companies.....	5
Domestic Property & Casualty Companies	3
Domestic Health Maintenance Organizations.....	0
Other Domestic Organizations	1

Financial Analysis (Includes Annual and Quarterly Reviews)

Domestic Financial Reviews.....	264
Domestic Supplemental Filings Reviews	209
Holding Company & Other Filings Reviews.....	257

Prepaid Funeral Benefits Contracts

Examinations Conducted	89
Number of Licenses.....	197
Reports Reviewed	1,261

Insurance Fraud Investigations

Referrals Received	1,036
Cases Referred for Prosecution	51
Successful Prosecutions	31
Fines	\$19,850
Restitution	\$7,190,865

Legal Proceedings*

Bulletins Issued	15
Directives Issued	0
Orders Issued.....	439
Rules Finalized	2
Investigations Initiated	190
Investigations Closed	147
Fines and Penalties.....	\$550
Recoveries & Restitution for Arkansas Consumers.....	\$46,920
Multi-State Settlements	4
Company Mergers	15
Certificate of Authority Cancellations	5

Liquidations and Rehabilitations*

A. *Liquidations* A.C.A. § 23-61-112(2).

No original actions were filed for liquidation of any domestic Arkansas insurance companies during the reporting year of 2014.

B. *Rehabilitations* A.C.A. § 23-61-112(3).

No original actions were filed for rehabilitation of any domestic Arkansas insurance companies during the reporting year of 2014.

*Department Bulletins, Directives, Public Orders, Rules and Court Orders of Rehabilitation/Liquidation are now available in electronic format at www.insurance.arkansas.gov/legal.htm.

Insurers Listed by Arkansas Premium as of 12/31/2014

Domestic Surplus Lines

NAIC	Company Name	AR Premium	Market Share	Assets	Liabilities	Capital & Surplus
24319	Allied World Surplus Lines Ins Co	\$964,122	61.7%	\$258,166,029	\$165,615,736	\$92,550,293
38920	Kinsale Ins Co	\$599,660	38.3%	\$308,195,586	\$204,094,594	\$104,100,991
	TOTAL	\$1,563,782	100.0%			

Farmers Mutual Aid Associations

NAIC	Company Name	AR Premium	Market Share	Assets	Liabilities	Capital & Surplus
14250	Farm & Home Mutual Ins Co	\$3,264,807	29.7%	\$5,030,531	\$2,749,087	\$2,281,444
14244	Farmers Mutual Ins Co Gentry	\$2,929,366	26.6%	\$13,222,258	\$10,266,845	\$2,955,413
14247	Farmers Protective Mutual Ins Co	\$1,689,175	15.3%	\$7,399,254	\$1,311,279	\$6,087,975
14252	Washington County Farmers Mutual Fire	\$1,172,579	10.7%	\$28,046,254	\$731,013	\$27,315,241
14246	Farmers Fire Ins Co	\$1,018,223	9.2%	\$1,367,333	\$683,314	\$684,019
14245	Farmers Mutual Fire Ins Co- Carroll Cty	\$898,281	8.2%	\$2,955,413	\$704,903	\$2,250,510
14251	Logan County Farmers Mutual Aid	\$37,685	0.3%	\$1,987,021	\$37,685	\$1,949,336
	TOTAL	\$11,010,116	100.0%			

Fraternal Organizations

NAIC	Company Name	AR Premium	Market Share	Assets	Liabilities	Capital & Surplus
57541	Modern Woodmen Of Amer	\$42,521,134	37.1%	\$14,131,105,296	\$12,652,058,759	\$1,479,046,537
56014	Thrivent Financial For Lutherans	\$31,419,921	27.4%	\$76,994,356,207	\$70,501,770,040	\$6,492,586,167
57320	Woodmen World Life Ins Soc	\$23,541,702	20.6%	\$10,439,989,589	\$9,343,085,118	\$1,096,904,471
58033	Knights Of Columbus	\$6,647,503	5.8%	\$21,461,707,706	\$19,564,403,028	\$1,897,304,678
58068	Independent Order Of Foresters Us Br	\$3,489,515	3.0%	\$2,911,783,932	\$2,805,341,987	\$106,441,945
57657	Royal Neighbors Of Amer	\$2,480,175	2.2%	\$904,386,926	\$695,325,203	\$209,061,723
56499	Woodmen World Assur Life Assn	\$2,026,788	1.8%	\$58,706,585	\$46,267,316	\$12,439,269
56383	Order of United Commercial Travelers	\$1,737,264	1.5%	\$19,931,493	\$10,319,057	\$9,612,436
57630	Polish Roman Catholic Union Of Amer	\$420,039	0.4%	\$204,120,608	\$197,001,980	\$7,118,628
56030	Catholic Financial Life	\$234,446	0.2%	\$1,350,071,147	\$1,304,077,496	\$45,993,651
57088	Degree Of Honor Protective Assn	\$10,103	0.0%	\$211,772,995	\$205,784,009	\$5,988,986
57223	Baptist Life Assn	\$8,979	0.0%	\$30,759,436	\$29,651,076	\$1,108,360
57622	Polish Natl Alliance Us Of Na	\$1,447	0.0%	\$432,834,622	\$416,914,234	\$15,920,388
56170	Womans Life Ins Society	\$440	0.0%	\$196,904,906	\$174,492,996	\$22,411,910
	TOTAL	\$114,539,456	100.0%			

Health Maintenance Organizations and Hospital, Medical, Dental Insurers

NAIC	Company Name	AR Premium	Market Share	Assets	Liabilities	Capital & Surplus
95885	Humana Hlth Plan Inc	\$266,162,912	28.0%	\$1,275,064,733	\$689,419,018	\$585,645,715
95442	Hmo Partners Inc	\$253,626,997	26.7%	\$186,731,781	\$67,310,751	\$119,421,030
95448	QCA Hlth Plan Inc	\$163,469,264	17.2%	\$64,017,278	\$43,728,419	\$20,288,859
47155	Delta Dental Plan of AR Inc	\$111,579,162	11.7%	\$97,466,716	\$32,657,528	\$64,809,188
95792	Windsor Hlth Plan Inc	\$96,645,945	10.2%	\$216,192,208	\$78,757,740	\$137,434,468
81973	Coventry Hlth & Life Ins Co	\$42,924,601	4.5%	\$1,616,312,325	\$912,072,240	\$704,240,085
95446	United Hlthcare of AR Inc	\$8,421,848	0.9%	\$10,045,547	\$2,251,325	\$7,794,222
95489	Coventry Hlth Care of KS Inc	\$7,262,745	0.8%	\$230,164,297	\$120,802,362	\$109,361,935
12282	Humana Regional Hlth Plan Inc	\$282,678	0.0%	\$16,021,399	\$963,865	\$15,057,534
	TOTAL	\$950,376,152	100.0%			

Life and Health

NAIC	Company Name	AR Premium	Market Share	Assets	Liabilities	Capital & Surplus
83470	USable Mut Ins Co	\$1,932,178,527	29.1%	\$1,580,839,042	\$760,796,664	\$820,042,378
12567	Care Improvement Plus S Central Ins	\$338,964,289	5.1%	\$646,874,788	\$298,289,945	\$348,584,843
79413	UnitedHealthcare Ins Co	\$267,572,714	4.0%	\$15,113,367,649	\$9,517,539,233	\$5,595,828,416
65056	Jackson Natl Life Ins Co	\$185,389,305	2.8%	\$180,834,423,488	\$176,348,286,221	\$4,486,137,267
73288	Humana Ins Co	\$172,119,520	2.6%	\$6,237,012,936	\$2,929,513,208	\$3,307,499,728
65978	Metropolitan Life Ins Co	\$145,214,476	2.2%	\$391,924,845,165	\$379,916,948,582	\$12,007,896,583
65676	Lincoln Natl Life Ins Co	\$132,518,213	2.0%	\$213,625,079,308	\$206,098,741,203	\$7,526,338,105
80799	Celtic Ins Co	\$125,489,515	1.9%	\$136,599,483	\$107,238,824	\$29,360,659
60488	American Gen Life Ins Co	\$107,995,237	1.6%	\$161,875,759,132	\$152,709,015,447	\$9,166,743,685
69345	Teachers Ins & Ann Assoc Of Amer	\$99,213,140	1.5%	\$262,634,190,313	\$228,714,246,336	\$33,919,943,977
86231	Transamerica Life Ins Co	\$95,109,130	1.4%	\$124,486,492,983	\$118,651,156,316	\$5,835,336,667
61271	Principal Life Ins Co	\$94,524,484	1.4%	\$154,073,617,247	\$149,871,496,642	\$4,202,120,604
65838	John Hancock Life Ins Co USA	\$89,985,577	1.4%	\$245,892,218,376	\$240,563,927,760	\$5,328,290,616
66869	Nationwide Life Ins Co	\$77,491,747	1.2%	\$128,585,070,175	\$124,177,092,002	\$4,407,978,173
60380	American Family Life Assur Co of Col	\$72,943,575	1.1%	\$100,966,070,689	\$90,126,951,437	\$10,839,119,252
68241	Prudential Ins Co Of Amer	\$71,901,025	1.1%	\$309,101,912,391	\$298,770,935,243	\$10,330,977,148
91596	New York Life Ins & Ann Corp	\$67,727,845	1.0%	\$126,837,329,332	\$119,168,826,114	\$7,668,503,218
67091	Northwestern Mut Life Ins Co	\$66,032,665	1.0%	\$230,003,964,120	\$210,948,836,393	\$19,055,127,727
69108	State Farm Life Ins Co	\$63,972,098	1.0%	\$63,530,488,452	\$54,529,382,761	\$9,001,105,691
68896	Southern Farm Bureau Life Ins Co	\$63,204,268	1.0%	\$12,995,542,044	\$10,559,102,661	\$2,436,439,383
90611	Allianz Life Ins Co Of N Amer	\$59,422,291	0.9%	\$116,205,628,297	\$110,950,448,016	\$5,255,180,281
62235	Unum Life Ins Co Of Amer	\$52,775,950	0.8%	\$19,701,372,348	\$18,155,241,114	\$1,546,131,234
68675	Security Benefit Life Ins Co	\$51,641,019	0.8%	\$24,987,372,794	\$23,685,916,711	\$1,301,456,083
60054	Aetna Life Ins Co	\$51,292,872	0.8%	\$22,795,394,563	\$18,923,493,871	\$3,871,900,692
66915	New York Life Ins Co	\$50,050,822	0.8%	\$146,267,047,744	\$127,661,055,161	\$18,605,992,583
70238	Variable Ann Life Ins Co	\$50,013,607	0.8%	\$77,095,194,647	\$73,477,118,550	\$3,618,076,097
65005	RiverSource Life Ins Co	\$49,582,060	0.7%	\$104,762,556,052	\$101,430,218,077	\$3,332,337,975
86509	Voya Retirement Ins & Ann Co	\$47,846,870	0.7%	\$89,253,482,555	\$87,245,595,289	\$2,007,887,266
91642	Forethought Life Ins Co	\$47,787,006	0.7%	\$12,583,872,787	\$11,778,917,351	\$804,955,436
94358	USable Life	\$47,532,076	0.7%	\$446,030,490	\$251,747,357	\$194,283,133
79227	Pruco Life Ins Co	\$46,984,871	0.7%	\$106,837,998,680	\$104,181,505,180	\$2,656,493,500
12231	UnitedHealthcare Ins Co of the River	\$46,918,314	0.7%	\$154,677,150	\$93,940,705	\$60,736,445
62944	AXA Equitable Life Ins Co	\$44,705,901	0.7%	\$165,941,801,748	\$160,771,788,444	\$5,170,013,304
67466	Pacific Life Ins Co	\$44,038,473	0.7%	\$112,503,492,765	\$105,331,940,612	\$7,171,552,153
68136	Protective Life Ins Co	\$43,588,890	0.7%	\$41,231,735,899	\$37,732,829,816	\$3,498,906,083
66044	Midland Natl Life Ins Co	\$43,103,868	0.6%	\$41,138,735,763	\$38,344,688,895	\$2,794,046,868
69868	United Of Omaha Life Ins Co	\$42,934,003	0.6%	\$18,786,688,405	\$17,363,965,214	\$1,422,723,191
12575	SilverScript Ins Co	\$42,852,466	0.6%	\$2,764,215,754	\$2,316,137,741	\$448,078,013
66168	Minnesota Life Ins Co	\$38,583,160	0.6%	\$35,716,004,025	\$33,115,584,301	\$2,600,419,724
65935	Massachusetts Mut Life Ins Co	\$37,827,015	0.6%	\$197,189,089,372	\$182,957,763,321	\$14,231,326,051
67369	Cigna Hlth & Life Ins Co	\$33,733,291	0.5%	\$6,204,475,323	\$3,404,804,103	\$2,799,671,220
67172	Ohio Natl Life Ins Co	\$30,843,343	0.5%	\$27,449,336,931	\$26,352,263,142	\$1,097,073,789
63312	Great Amer Life Ins Co	\$30,615,275	0.5%	\$22,772,579,798	\$21,136,547,805	\$1,636,031,993
92738	American Equity Invest Life Ins Co	\$29,664,306	0.4%	\$36,129,668,298	\$33,957,213,592	\$2,172,454,706
70670	Health Care Serv Corp A Mut Legal Re	\$29,443,515	0.4%	\$17,829,420,895	\$7,887,174,434	\$9,942,246,461
87726	Metlife Ins Co USA	\$28,517,247	0.4%	\$174,605,977,568	\$168,564,450,103	\$6,041,527,465
68608	Symetra Life Ins Co	\$28,497,290	0.4%	\$29,151,723,813	\$27,073,388,512	\$2,078,335,301
63274	Fidelity & Guar Life Ins Co	\$28,072,404	0.4%	\$18,973,194,927	\$17,761,596,910	\$1,211,598,017
61689	Athene Ann & Life Co	\$25,524,571	0.4%	\$44,405,332,951	\$43,365,306,514	\$1,040,026,437
65757	Shelter Life Ins Co	\$24,907,781	0.4%	\$1,118,222,252	\$940,224,641	\$177,997,611
70815	Hartford Life & Accident Ins Co	\$23,954,129	0.4%	\$9,086,882,540	\$7,494,547,445	\$1,592,335,095
68322	Great W Life & Ann Ins Co	\$22,917,855	0.3%	\$54,523,476,934	\$53,522,539,369	\$1,000,937,565
62510	Equitrust Life Ins Co	\$22,814,661	0.3%	\$14,454,695,663	\$13,557,662,315	\$897,033,347
60534	American Heritage Life Ins Co	\$21,997,489	0.3%	\$1,799,723,020	\$1,446,467,236	\$353,255,784

Life and Health (Cont.)

NAIC	Company Name	AR Premium	Market Share	Assets	Liabilities	Capital & Surplus
12902	Healthspring Life & Hlth Ins Co Inc	\$21,565,234	0.3%	\$581,094,615	\$253,232,446	\$327,862,169
69019	Standard Ins Co	\$21,135,921	0.3%	\$20,361,117,513	\$19,209,332,932	\$1,151,784,581
65315	Liberty Life Assur Co Of Boston	\$20,956,328	0.3%	\$14,628,754,778	\$13,726,313,892	\$902,440,886
62626	CMFG Life Ins Co	\$20,664,265	0.3%	\$15,490,072,588	\$13,857,195,918	\$1,632,876,670
64467	Wellcare Hlth Ins of KY Inc	\$19,599,565	0.3%	\$522,623,243	\$310,914,056	\$211,709,187
70025	Genworth Life Ins Co	\$19,563,353	0.3%	\$38,163,215,437	\$34,938,855,986	\$3,224,359,451
62286	Golden Rule Ins Co	\$18,987,519	0.3%	\$718,208,451	\$405,025,824	\$313,182,627
64246	Guardian Life Ins Co Of Amer	\$18,775,836	0.3%	\$45,297,378,336	\$39,605,810,243	\$5,691,568,093
60410	American Fidelity Assur Co	\$18,385,943	0.3%	\$4,958,979,797	\$4,578,606,502	\$380,373,295
70688	Transamerica Financial Life Ins Co	\$18,012,929	0.3%	\$31,099,279,951	\$30,141,583,288	\$957,696,663
71153	Hartford Life & Ann Ins Co	\$17,433,066	0.3%	\$47,246,337,570	\$43,837,440,540	\$3,408,897,030
68381	Reliance Standard Life Ins Co	\$17,363,148	0.3%	\$7,583,752,327	\$6,870,420,542	\$713,331,785
88072	Hartford Life Ins Co	\$16,971,044	0.3%	\$123,444,990,551	\$117,880,548,350	\$5,564,442,201
92711	HCC Life Ins Co	\$16,359,391	0.2%	\$923,464,635	\$369,192,378	\$554,272,257
60739	American Natl Ins Co	\$15,816,519	0.2%	\$18,112,985,349	\$15,233,831,008	\$2,879,154,341
67105	Reliastar Life Ins Co	\$14,628,144	0.2%	\$21,468,698,792	\$19,523,991,291	\$1,944,707,501
65536	Genworth Life & Ann Ins Co	\$14,625,360	0.2%	\$24,241,988,787	\$22,093,819,070	\$2,148,169,717
61492	Athene Annuity & Life Assur Co	\$14,620,337	0.2%	\$11,159,891,851	\$10,005,803,074	\$1,154,088,777
68195	Provident Life & Accident Ins Co	\$14,569,696	0.2%	\$8,297,289,793	\$7,577,330,750	\$719,959,043
61263	Bankers Life & Cas Co	\$14,209,850	0.2%	\$16,590,665,198	\$15,397,588,608	\$1,193,076,590
92916	United Amer Ins Co	\$13,656,072	0.2%	\$1,694,915,509	\$1,516,495,425	\$178,420,084
66281	Transamerica Premier Life Ins Co	\$13,544,211	0.2%	\$42,248,242,420	\$40,473,537,559	\$1,774,704,861
66974	North Amer Co Life & Hlth Ins	\$13,407,722	0.2%	\$16,970,038,184	\$15,793,325,928	\$1,176,712,256
62049	Colonial Life & Accident Ins Co	\$12,993,746	0.2%	\$2,921,975,114	\$2,354,916,768	\$567,058,347
65498	Life Ins Co Of N Amer	\$12,894,784	0.2%	\$7,562,577,546	\$6,216,541,258	\$1,346,036,288
63762	Medco Containment Life Ins Co	\$12,662,588	0.2%	\$1,180,772,137	\$870,579,241	\$310,192,896
90328	First Hlth Life & Hlth Ins Co	\$12,497,881	0.2%	\$475,010,553	\$248,989,745	\$226,020,808
65919	Primerica Life Ins Co	\$11,859,564	0.2%	\$1,279,436,962	\$780,445,342	\$498,991,620
69477	Time Ins Co	\$11,707,422	0.2%	\$991,019,739	\$601,298,030	\$389,721,709
66850	National Western Life Ins Co	\$11,483,319	0.2%	\$10,262,747,688	\$9,077,105,010	\$1,185,642,678
69663	USAA Life Ins Co	\$11,401,227	0.2%	\$21,985,395,139	\$19,844,668,007	\$2,140,727,132
83836	Selected Funeral & Life Ins Co	\$11,376,811	0.2%	\$169,385,210	\$146,669,053	\$22,716,157
80802	US Br Sun Life Assur Co of Canada	\$11,302,148	0.2%	\$17,090,507,612	\$16,150,213,386	\$940,294,226
63177	Farmers New World Life Ins Co	\$10,931,077	0.2%	\$7,063,723,256	\$6,566,094,302	\$497,628,954
91472	Globe Life & Accident Ins Co	\$10,914,587	0.2%	\$3,519,428,649	\$3,280,028,936	\$239,399,713
68357	Reliable Life Ins Co	\$9,837,949	0.1%	\$21,190,360	\$8,402,511	\$12,787,849
66583	National Guardian Life Ins Co	\$9,493,491	0.1%	\$2,948,271,841	\$2,698,138,560	\$250,133,281
80942	Voya Ins & Ann Co	\$9,116,506	0.1%	\$66,778,843,977	\$64,659,433,958	\$2,119,410,019
61301	Ameritas Life Ins Corp	\$8,980,330	0.1%	\$16,822,004,590	\$15,198,546,412	\$1,623,458,178
67644	Penn Mut Life Ins Co	\$8,883,521	0.1%	\$17,270,765,708	\$15,470,989,167	\$1,799,776,541
60895	American United Life Ins Co	\$8,821,513	0.1%	\$23,401,515,600	\$22,384,506,344	\$1,017,009,256
92622	Western Southern Life Assur Co	\$8,664,373	0.1%	\$13,146,952,405	\$12,095,608,479	\$1,051,343,926
65595	Lincoln Benefit Life Co	\$8,414,194	0.1%	\$12,651,250,363	\$11,932,235,777	\$719,014,586
84174	ELCO Mut Life & Ann	\$8,075,924	0.1%	\$526,745,537	\$482,230,788	\$44,514,749
89206	Ohio Natl Life Assur Corp	\$7,769,824	0.1%	\$3,605,811,632	\$3,309,791,442	\$296,020,190
93548	PHL Variable Ins Co	\$7,639,835	0.1%	\$6,533,901,953	\$6,335,312,915	\$198,589,038
71412	Mutual Of Omaha Ins Co	\$7,606,936	0.1%	\$6,426,766,074	\$3,631,108,856	\$2,795,657,218
83968	Citizens Fidelity Ins Co	\$7,546,482	0.1%	\$68,496,929	\$57,430,836	\$11,066,093
79065	Delaware Life Ins Co	\$7,506,733	0.1%	\$40,699,777,266	\$39,108,294,573	\$1,591,482,693
92657	Nationwide Life & Ann Ins Co	\$7,380,573	0.1%	\$7,896,735,000	\$7,206,112,429	\$690,622,571
70998	Qualchoice Life & Hlth Ins Co Inc	\$7,290,250	0.1%	\$7,484,480	\$1,202,086	\$6,282,394
77968	Family Heritage Life Ins Co Of Amer	\$7,187,599	0.1%	\$775,235,289	\$707,828,523	\$67,406,766
65927	Lincoln Heritage Life Ins Co	\$7,181,413	0.1%	\$805,208,480	\$696,193,316	\$109,015,164
68284	Pyramid Life Ins Co	\$7,050,224	0.1%	\$168,559,684	\$80,195,647	\$88,364,037

Life and Health (Cont.)

NAIC	Company Name	AR Premium	Market Share	Assets	Liabilities	Capital & Surplus
62146	Combined Ins Co Of Amer	\$6,861,234	0.1%	\$1,378,320,774	\$1,243,960,988	\$134,359,786
12321	American Continental Ins Co	\$6,747,543	0.1%	\$177,247,515	\$90,888,543	\$86,358,972
65021	Stonebridge Life Ins Co	\$6,326,835	0.1%	\$1,711,257,368	\$1,560,810,068	\$150,447,300
65528	Life Ins Co Of The Southwest	\$6,254,718	0.1%	\$13,382,043,080	\$12,603,064,083	\$778,978,997
70319	Washington Natl Ins Co	\$5,732,540	0.1%	\$4,775,251,768	\$4,448,263,396	\$326,988,372
65129	Kansas City Life Ins Co	\$5,729,789	0.1%	\$3,402,139,994	\$3,063,717,952	\$338,422,042
83607	Guggenheim Life & Ann Co	\$5,645,835	0.1%	\$12,812,436,818	\$12,166,479,063	\$645,957,755
72850	United World Life Ins Co	\$5,278,661	0.1%	\$119,429,408	\$70,058,873	\$49,370,535
65331	Liberty Natl Life Ins Co	\$5,112,215	0.1%	\$7,419,550,203	\$6,841,015,742	\$578,534,461
70939	Gerber Life Ins Co	\$5,094,887	0.1%	\$2,812,152,435	\$2,526,829,135	\$285,323,300
64017	Jefferson Natl Life Ins Co	\$5,048,513	0.1%	\$3,713,998,496	\$3,674,181,175	\$39,817,321
93696	Fidelity Investments Life Ins Co	\$4,971,644	0.1%	\$24,504,253,713	\$23,818,439,957	\$685,813,756
88668	Mutual Of Amer Life Ins Co	\$4,862,735	0.1%	\$17,790,884,082	\$16,793,164,684	\$997,719,398
94250	Banner Life Ins Co	\$4,757,627	0.1%	\$1,818,562,008	\$1,449,475,225	\$369,086,783
61999	Americo Fin Life & Ann Ins Co	\$4,599,444	0.1%	\$3,921,857,768	\$3,463,158,911	\$458,698,857
60186	Allstate Life Ins Co	\$4,558,642	0.1%	\$34,120,938,338	\$31,408,683,049	\$2,712,255,289
62065	Colonial Penn Life Ins Co	\$4,558,510	0.1%	\$742,844,382	\$669,588,639	\$73,255,743
67989	American Memorial Life Ins Co	\$4,537,189	0.1%	\$2,655,547,582	\$2,543,114,446	\$112,433,136
60577	American Income Life Ins Co	\$4,510,276	0.1%	\$2,898,631,113	\$2,669,768,131	\$228,862,982
78778	Guardian Ins & Ann Co Inc	\$4,395,794	0.1%	\$15,656,247,058	\$15,429,062,236	\$227,184,821
71730	Continental Amer Ins Co	\$4,392,318	0.1%	\$396,955,753	\$287,305,041	\$109,650,712
70335	West Coast Life Ins Co	\$4,306,224	0.1%	\$4,810,067,779	\$4,397,800,652	\$412,267,127
67326	Old Surety Life Ins Co	\$4,237,606	0.1%	\$26,329,391	\$14,698,580	\$11,630,811
73881	American Life & Annuity Co	\$4,155,734	0.1%	\$48,919,327	\$44,858,621	\$4,060,706
84034	First Guar Ins Co	\$4,115,285	0.1%	\$54,696,424	\$50,115,723	\$4,580,701
93629	Prudential Retirement Ins & Ann Co	\$3,918,165	0.1%	\$78,877,499,229	\$77,944,830,318	\$932,668,911
61883	Central United Life Ins Co	\$3,897,121	0.1%	\$305,059,546	\$228,268,706	\$76,790,840
68810	Sentry Life Ins Co	\$3,876,493	0.1%	\$5,333,589,502	\$5,062,200,142	\$271,389,360
87963	National Teachers Assoc Life Ins Co	\$3,824,752	0.1%	\$422,858,061	\$341,914,628	\$80,943,433
76236	Cincinnati Life Ins Co	\$3,823,551	0.1%	\$3,915,974,595	\$3,692,520,568	\$223,454,028
66427	MTL Ins Co	\$3,822,127	0.1%	\$1,927,955,280	\$1,795,933,496	\$132,021,784
70408	Union Security Ins Co	\$3,814,463	0.1%	\$4,937,110,191	\$4,521,390,048	\$415,720,143
68462	Reserve Natl Ins Co	\$3,796,047	0.1%	\$118,152,919	\$67,183,728	\$50,969,191
61921	Citizens Security Life Ins Co	\$3,737,331	0.1%	\$22,066,384	\$9,256,778	\$12,809,606
76112	Oxford Life Ins Co	\$3,548,344	0.1%	\$1,197,512,867	\$1,039,001,361	\$158,511,506
60076	Security Plan Life Ins Co	\$3,527,138	0.1%	\$323,916,407	\$270,435,225	\$53,481,182
65242	Lafayette Life Ins Co	\$3,425,180	0.1%	\$4,067,788,940	\$3,863,420,643	\$204,368,297
68713	Security Life Of Denver Ins Co	\$3,389,852	0.1%	\$14,228,256,535	\$13,099,466,444	\$1,128,790,091
69000	Northwestern Long Term Care Ins Co	\$3,284,438	0.0%	\$161,441,477	\$84,261,005	\$77,180,472
62324	Freedom Life Ins Co Of Amer	\$3,277,194	0.0%	\$59,928,785	\$34,198,912	\$25,729,873
60984	Compbenefits Ins Co	\$3,206,580	0.0%	\$47,292,249	\$8,277,552	\$39,014,697
61476	Boston Mut Life Ins Co	\$3,094,677	0.0%	\$1,245,223,950	\$1,099,913,578	\$145,310,372
63479	United Teacher Assoc Ins Co	\$3,066,084	0.0%	\$1,018,098,765	\$961,960,787	\$56,137,978
61425	Trustmark Ins Co	\$2,940,086	0.0%	\$1,393,483,997	\$1,105,809,949	\$287,674,048
64211	Guarantee Trust Life Ins Co	\$2,845,928	0.0%	\$433,253,656	\$370,983,779	\$62,269,877
77879	5 Star Life Ins Co	\$2,834,682	0.0%	\$268,587,888	\$227,793,496	\$40,794,392
62952	Equitable Life & Cas Ins Co	\$2,811,476	0.0%	\$295,922,553	\$254,121,448	\$41,801,105
31119	Medico Ins Co	\$2,802,130	0.0%	\$69,133,931	\$38,194,993	\$30,938,938
64513	Horace Mann Life Ins Co	\$2,778,192	0.0%	\$7,893,969,654	\$7,495,316,113	\$398,653,542
70106	United States Life Ins Co in the Cit	\$2,747,000	0.0%	\$27,985,441,605	\$25,984,607,379	\$2,000,834,226
68543	Liberty Bankers Life Ins Co	\$2,737,927	0.0%	\$1,141,378,966	\$945,924,219	\$195,454,747
63258	Federated Life Ins Co	\$2,737,420	0.0%	\$1,526,253,229	\$1,218,168,699	\$308,084,530
61212	Baltimore Life Ins Co	\$2,594,554	0.0%	\$1,140,445,883	\$1,065,703,989	\$74,741,894
80578	Physicians Mut Ins Co	\$2,565,170	0.0%	\$2,026,151,800	\$1,180,684,893	\$845,466,907

Life and Health (Cont.)

NAIC	Company Name	AR Premium	Market Share	Assets	Liabilities	Capital & Surplus
62308	Connecticut Gen Life Ins Co	\$2,486,824	0.0%	\$17,768,919,754	\$14,295,618,338	\$3,473,301,416
69396	Texas Life Ins Co	\$2,478,307	0.0%	\$1,016,569,505	\$947,622,039	\$68,947,466
65900	Conseco Life Ins Co	\$2,444,966	0.0%	\$3,732,015,328	\$3,506,671,100	\$225,344,228
69116	State Life Ins Co	\$2,320,281	0.0%	\$5,522,202,232	\$5,168,039,608	\$354,162,624
71714	Berkshire Life Ins Co of Amer	\$2,232,854	0.0%	\$3,377,311,135	\$3,107,848,633	\$269,462,502
67814	Phoenix Life Ins Co	\$2,163,204	0.0%	\$13,249,349,913	\$12,640,152,335	\$609,197,578
92908	HealthMarkets Ins Co	\$2,161,891	0.0%	\$29,179,210	\$11,302,792	\$17,876,418
93262	Penn Ins & Ann Co	\$2,157,578	0.0%	\$3,254,696,442	\$2,837,462,214	\$417,234,228
62928	EMC Natl Life Co	\$2,149,152	0.0%	\$1,009,848,367	\$911,001,996	\$98,846,371
83860	American Home Life Ins Co	\$2,121,094	0.0%	\$19,132,423	\$18,699,355	\$433,068
93440	HM Life Ins Co	\$2,055,423	0.0%	\$574,505,906	\$265,296,664	\$309,209,242
60445	Sagikor Life Ins Co	\$2,050,592	0.0%	\$1,214,894,898	\$1,140,644,940	\$74,249,958
71161	Principal Natl Life Ins Co	\$2,044,592	0.0%	\$141,247,957	\$56,434,690	\$84,813,267
63665	General Amer Life Ins Co	\$1,998,123	0.0%	\$12,213,417,953	\$11,346,879,052	\$866,538,901
81043	Bankers Life Ins Co	\$1,959,226	0.0%	\$345,740,941	\$322,709,400	\$23,031,541
77828	Companion Life Ins Co	\$1,902,216	0.0%	\$284,897,238	\$135,873,450	\$149,023,788
67199	Old Amer Ins Co	\$1,866,072	0.0%	\$250,085,463	\$227,259,694	\$22,825,769
72125	Physicians Life Ins Co	\$1,864,393	0.0%	\$1,430,485,171	\$1,300,423,290	\$130,061,881
64505	Homesteaders Life Co	\$1,841,819	0.0%	\$2,500,755,676	\$2,339,622,461	\$161,133,215
98205	National Found Life Ins Co	\$1,788,326	0.0%	\$25,088,610	\$13,556,558	\$11,532,052
67784	Philadelphia Amer Life Ins Co	\$1,756,786	0.0%	\$220,219,624	\$186,974,966	\$33,244,658
67598	Paul Revere Life Ins Co	\$1,751,413	0.0%	\$4,145,126,886	\$3,867,095,696	\$278,031,190
60142	TIAA Cref Life Ins Co	\$1,745,607	0.0%	\$9,803,159,467	\$9,448,584,288	\$354,575,179
71854	AAA Life Ins Co	\$1,721,690	0.0%	\$575,090,689	\$452,388,585	\$122,702,103
66214	Heartland Natl Life Ins Co	\$1,630,464	0.0%	\$9,846,541	\$5,549,462	\$4,297,079
84824	Commonwealth Ann & Life Ins Co	\$1,619,743	0.0%	\$10,497,030,311	\$8,851,048,741	\$1,645,981,570
92703	United Natl Life Ins Co Of Amer	\$1,613,485	0.0%	\$16,145,597	\$12,139,282	\$4,006,315
63053	Family Life Ins Co	\$1,606,028	0.0%	\$146,501,477	\$110,271,118	\$36,230,359
86630	Prudential Ann Life Assur Corp	\$1,586,081	0.0%	\$47,706,642,857	\$47,100,902,370	\$605,740,487
63983	United Heritage Life Ins Co	\$1,569,697	0.0%	\$522,580,520	\$464,563,521	\$58,016,998
62863	Trustmark Life Ins Co	\$1,569,092	0.0%	\$353,189,337	\$190,552,387	\$162,636,950
65110	Kanawha Ins Co	\$1,509,885	0.0%	\$1,458,809,873	\$1,336,736,208	\$122,073,665
69485	Security Natl Life Ins Co	\$1,476,354	0.0%	\$507,817,132	\$473,460,975	\$34,356,157
74780	Integrity Life Ins Co	\$1,436,628	0.0%	\$6,107,078,432	\$5,443,290,301	\$663,788,131
64890	Berkley Life & Hlth Ins Co	\$1,428,797	0.0%	\$197,606,088	\$91,608,657	\$105,997,431
84530	US Financial Life Ins Co	\$1,406,929	0.0%	\$642,942,359	\$540,763,382	\$102,178,977
71439	Assurity Life Ins Co	\$1,398,051	0.0%	\$2,463,612,973	\$2,163,065,748	\$300,547,225
65412	Life Ins Co Of AL	\$1,387,136	0.0%	\$113,480,640	\$76,227,942	\$37,252,698
80926	Sun Life & Hlth Ins Co	\$1,382,787	0.0%	\$371,841,185	\$196,348,977	\$175,492,208
61190	Auto Owners Life Ins Co	\$1,345,056	0.0%	\$3,632,333,612	\$3,288,311,326	\$344,022,286
80314	Unicare Life & Hlth Ins Co	\$1,316,605	0.0%	\$413,315,992	\$349,488,941	\$63,827,051
90557	Zurich Amer Life Ins Co	\$1,283,781	0.0%	\$12,689,297,745	\$12,542,356,851	\$146,940,894
67539	Pan Amer Life Ins Co	\$1,272,953	0.0%	\$1,345,435,957	\$1,107,936,670	\$237,499,288
68985	Starmount Life Ins Co	\$1,258,415	0.0%	\$59,129,619	\$34,122,394	\$25,007,225
73474	Dentegra Ins Co	\$1,247,645	0.0%	\$48,027,217	\$11,053,150	\$36,974,067
91529	Unimerica Ins Co	\$1,241,905	0.0%	\$415,039,544	\$227,204,857	\$187,834,687
63290	Fidelity Life Assn A Legal Reserve L	\$1,241,315	0.0%	\$411,863,776	\$277,162,471	\$134,701,305
66370	Mony Life Ins Co	\$1,208,830	0.0%	\$7,674,481,936	\$7,183,834,445	\$490,647,491
60801	American Public Life Ins Co	\$1,198,786	0.0%	\$83,209,412	\$61,583,935	\$21,625,477
97136	Metropolitan Tower Life Ins Co	\$1,189,979	0.0%	\$4,999,226,927	\$4,232,027,343	\$767,199,584
63967	Government Personnel Mut Life Ins Co	\$1,186,829	0.0%	\$837,512,817	\$725,133,023	\$112,379,794
69930	United Ins Co Of Amer	\$1,177,066	0.0%	\$3,644,802,345	\$3,205,401,572	\$439,400,773
99937	Columbus Life Ins Co	\$1,176,412	0.0%	\$3,337,259,451	\$3,114,629,083	\$222,630,368
78077	Mony Life Ins Co Of Amer	\$1,121,621	0.0%	\$2,830,558,476	\$2,445,679,116	\$384,879,360

Life and Health (Cont.)

NAIC	Company Name	AR Premium	Market Share	Assets	Liabilities	Capital & Surplus
12747	Envision Ins Co	\$1,114,126	0.0%	\$515,036,057	\$477,390,360	\$37,645,697
61751	Central States H & L Co Of Omaha	\$1,087,607	0.0%	\$414,730,492	\$295,148,795	\$119,581,697
71870	Fidelity Security Life Ins Co	\$1,083,604	0.0%	\$831,653,151	\$679,796,197	\$151,856,954
62200	Accordia Life & Ann Co	\$1,081,404	0.0%	\$7,754,848,161	\$7,258,103,918	\$496,744,243
76023	Columbian Life Ins Co	\$1,064,955	0.0%	\$314,519,899	\$276,608,830	\$37,911,070
77399	Sterling Life Ins Co	\$1,045,341	0.0%	\$110,465,300	\$60,825,370	\$49,639,930
68845	Shenandoah Life Ins Co	\$1,042,073	0.0%	\$1,204,439,048	\$1,118,984,546	\$85,454,502
65722	Loyal Amer Life Ins Co	\$1,041,712	0.0%	\$249,349,234	\$175,805,143	\$73,544,091
86118	Arkansas Bankers Life Ins Co	\$1,026,311	0.0%	\$3,209,789	\$1,546,862	\$1,662,927
83992	Foundation Life Ins Co Of AR	\$996,672	0.0%	\$5,343,286	\$3,862,799	\$1,480,487
69078	Standard Security Life Ins Co Of NY	\$992,196	0.0%	\$252,408,335	\$135,883,814	\$116,524,521
61832	Chesapeake Life Ins Co	\$976,515	0.0%	\$75,099,170	\$31,964,166	\$43,135,004
91626	New England Life Ins Co	\$975,052	0.0%	\$11,179,519,199	\$10,504,281,672	\$675,237,527
60542	American Home Life Ins Co	\$957,692	0.0%	\$241,636,543	\$221,159,305	\$20,477,238
67652	First Penn Pacific Life Ins Co	\$949,019	0.0%	\$1,741,790,314	\$1,533,364,076	\$208,426,238
86355	Standard Life & Accident Ins Co	\$920,491	0.0%	\$530,176,673	\$271,092,750	\$259,083,923
97179	UnitedHealthcare Life Ins Co	\$913,244	0.0%	\$132,599,648	\$91,161,575	\$41,438,073
65080	John Alden Life Ins Co	\$887,006	0.0%	\$313,837,975	\$278,219,084	\$35,618,891
84115	Jackson Griffin Ins Co	\$872,046	0.0%	\$11,340,186	\$10,711,244	\$628,942
67393	Ozark Natl Life Ins Co	\$861,705	0.0%	\$750,202,824	\$625,673,012	\$124,529,812
71390	Puritan Life Ins Co of Amer	\$850,318	0.0%	\$37,782,921	\$31,816,070	\$5,966,851
70548	Wichita Natl Life Ins Co	\$800,562	0.0%	\$17,741,467	\$9,701,777	\$8,039,690
62359	Constitution Life Ins Co	\$733,219	0.0%	\$316,533,984	\$279,553,704	\$36,980,280
67180	Ohio State Life Ins Co	\$701,377	0.0%	\$13,765,198	\$3,288,903	\$10,476,295
84786	Colorado Bankers Life Ins Co	\$657,818	0.0%	\$284,191,759	\$250,297,062	\$33,894,697
76325	Senior Hlth Ins Co of PA	\$650,030	0.0%	\$2,906,965,242	\$2,826,959,318	\$80,005,924
74799	Leaders Life Ins Co	\$631,215	0.0%	\$6,171,955	\$3,004,641	\$3,167,314
83798	Memorial Ins Co Of Amer	\$617,364	0.0%	\$1,164,127	\$81,540	\$1,082,587
97705	Direct Gen Life Ins Co	\$617,289	0.0%	\$26,996,546	\$12,096,046	\$14,900,500
86126	Members Life Ins Co	\$593,090	0.0%	\$25,249,429	\$6,884,519	\$18,364,910
69744	Union Labor Life Ins Co	\$582,536	0.0%	\$3,337,533,949	\$3,261,148,297	\$76,385,652
84549	Symphonix Hlth Ins Inc	\$579,026	0.0%	\$64,923,539	\$57,354,085	\$7,569,454
70435	The Savings Bank Life Ins Co Of MA	\$570,160	0.0%	\$2,795,576,924	\$2,538,776,359	\$256,800,565
93661	Annuity Investors Life Ins Co	\$569,260	0.0%	\$2,994,759,275	\$2,767,668,799	\$227,090,476
70580	Humanadental Ins Co	\$564,944	0.0%	\$150,649,004	\$55,485,338	\$95,163,666
81779	Individual Assur Co Life Hlth & Acc	\$562,294	0.0%	\$17,859,431	\$9,815,362	\$8,044,069
85928	Family Liberty Life Ins Co	\$561,837	0.0%	\$32,015,789	\$23,160,956	\$8,854,833
82252	Landmark Life Ins Co	\$558,394	0.0%	\$44,606,741	\$40,204,179	\$4,402,562
65781	Madison Natl Life Ins Co Inc	\$556,616	0.0%	\$496,738,368	\$415,204,287	\$81,534,081
71471	Ability Ins Co	\$542,930	0.0%	\$957,998,490	\$925,135,374	\$32,863,116
88366	American Retirement Life Ins Co	\$537,821	0.0%	\$55,701,547	\$24,690,202	\$31,011,345
89184	Sterling Investors Life Ins Co	\$536,927	0.0%	\$15,271,110	\$8,977,774	\$6,293,336
93432	CM Life Ins Co	\$513,532	0.0%	\$8,792,464,583	\$7,487,710,675	\$1,304,753,908
69914	Sears Life Ins Co	\$494,164	0.0%	\$49,435,453	\$29,697,516	\$19,737,937
61360	Reliastar Life Ins Co Of NY	\$487,189	0.0%	\$3,201,620,470	\$2,902,869,562	\$298,750,908
90212	Great Southern Life Ins Co	\$457,919	0.0%	\$224,791,153	\$181,903,017	\$42,888,136
11121	Unified Life Ins Co	\$455,059	0.0%	\$183,540,213	\$158,616,082	\$24,924,131
64580	Illinois Mut Life Ins Co	\$450,684	0.0%	\$1,367,748,178	\$1,171,442,706	\$196,305,472
68594	American Amicable Life Ins Co Of TX	\$447,795	0.0%	\$285,928,362	\$192,521,660	\$93,406,702
69515	Medamerica Ins Co	\$443,409	0.0%	\$859,386,440	\$816,194,257	\$43,192,183
60836	American Republic Ins Co	\$433,312	0.0%	\$802,461,386	\$334,400,094	\$468,061,292
60763	American Pioneer Life Ins Co	\$427,573	0.0%	\$94,249,970	\$87,652,596	\$6,597,374
62553	Country Life Ins Co	\$417,330	0.0%	\$10,697,206,271	\$9,573,237,948	\$1,123,968,323
83933	Cooperative Life Ins Co	\$413,031	0.0%	\$6,672,971	\$4,199,037	\$2,473,934

Life and Health (Cont.)

NAIC	Company Name	AR Premium	Market Share	Assets	Liabilities	Capital & Surplus
84069	Smith Burial & Life Ins Co	\$407,496	0.0%	\$4,732,865	\$4,248,831	\$484,034
65870	Manhattan Life Ins Co	\$403,827	0.0%	\$362,391,250	\$321,424,262	\$40,966,988
71404	Continental Gen Ins Co	\$394,314	0.0%	\$242,413,932	\$220,913,797	\$21,500,135
60399	American Family Life Ins Co	\$374,161	0.0%	\$5,230,458,673	\$4,341,848,892	\$888,609,781
60275	American Bankers Life Assur Co Of FL	\$368,492	0.0%	\$489,614,860	\$433,698,312	\$55,916,548
61875	Church Life Ins Corp	\$366,503	0.0%	\$287,478,662	\$235,781,098	\$51,697,564
80985	4 Ever Life Ins Co	\$363,993	0.0%	\$198,537,762	\$106,272,512	\$92,265,250
61700	Renaissance Life & Hlth Ins Co of Am	\$352,377	0.0%	\$68,623,437	\$17,264,943	\$51,358,494
81353	NYLife Ins Co Of AZ	\$346,069	0.0%	\$199,780,662	\$120,133,159	\$79,647,503
93742	Securian Life Ins Co	\$344,543	0.0%	\$325,440,185	\$123,380,367	\$202,059,818
63657	Garden State Life Ins Co	\$334,199	0.0%	\$121,538,305	\$66,225,209	\$55,313,096
65811	American Modern Life Ins Co	\$330,061	0.0%	\$47,789,370	\$19,863,218	\$27,926,152
71072	Marquette Natl Life Ins Co	\$328,146	0.0%	\$6,728,466	\$1,133,835	\$5,594,631
60025	Express Scripts Ins Co	\$327,264	0.0%	\$270,827,346	\$186,836,860	\$83,990,486
69922	United Home Life Ins Co	\$320,592	0.0%	\$78,259,191	\$58,782,304	\$19,476,887
66680	National Life Ins Co	\$320,381	0.0%	\$9,209,944,765	\$7,668,789,330	\$1,541,155,435
68500	Continental Life Ins Co Brentwood	\$318,827	0.0%	\$277,835,490	\$121,468,711	\$156,366,779
63487	Investors Life Ins Co N Amer	\$306,469	0.0%	\$680,739,980	\$627,412,830	\$53,327,150
61239	Bankers Fidelity Life Ins Co	\$305,805	0.0%	\$139,087,086	\$105,082,657	\$34,004,429
68802	Sentinel Security Life Ins Co	\$289,598	0.0%	\$479,497,782	\$453,776,875	\$25,720,907
80659	US Business of Canada Life Assur Co	\$286,814	0.0%	\$4,425,111,975	\$4,288,899,943	\$136,212,032
62413	Continental Assur Co	\$279,464	0.0%	\$2,450,382,232	\$2,200,075,915	\$250,306,317
64327	Harleysville Life Ins Co	\$273,681	0.0%	\$415,114,461	\$381,041,852	\$34,072,609
93777	Pavonia Life Ins Co of MI	\$271,069	0.0%	\$405,918,819	\$323,625,193	\$82,293,626
61409	National Benefit Life Ins Co	\$263,867	0.0%	\$481,623,158	\$309,688,446	\$171,934,712
69132	State Mut Ins Co	\$258,655	0.0%	\$292,459,963	\$258,559,113	\$33,900,850
67660	Pennsylvania Life Ins Co	\$258,523	0.0%	\$478,018,471	\$47,179,581	\$430,838,890
62596	Union Fidelity Life Ins Co	\$248,971	0.0%	\$19,673,708,525	\$19,155,280,168	\$518,428,357
80020	Mountain Life Ins Co	\$247,701	0.0%	\$11,860,747	\$6,594,174	\$5,266,573
71773	American Natl Life Ins Co Of TX	\$243,603	0.0%	\$136,259,315	\$99,508,589	\$36,750,726
69310	Surety Life Ins Co	\$243,116	0.0%	\$16,941,100	\$713,004	\$16,228,096
67873	Pioneer Amer Ins Co	\$241,507	0.0%	\$58,920,386	\$39,345,763	\$19,574,623
67261	Old Republic Life Ins Co	\$238,517	0.0%	\$125,093,454	\$94,521,819	\$30,571,635
90247	Pharmacists Life Ins Co	\$235,290	0.0%	\$93,019,845	\$85,742,373	\$7,277,472
78662	Senior Life Ins Co	\$234,794	0.0%	\$47,410,720	\$35,684,518	\$11,726,202
81108	United Security Life & Hlth Ins Co	\$228,300	0.0%	\$3,921,206	\$1,291,394	\$2,629,812
77720	LifeSecure Ins Co	\$225,931	0.0%	\$226,861,672	\$206,494,944	\$20,366,728
79022	Transamerica Advisors Life Ins Co	\$220,245	0.0%	\$9,692,474,317	\$8,780,384,399	\$912,089,918
63819	Unity Financial Life Ins Co	\$216,074	0.0%	\$190,111,762	\$178,631,893	\$11,479,869
68721	Security Life Ins Co Of Amer	\$213,395	0.0%	\$72,704,144	\$52,453,147	\$20,250,998
67083	Manhattan Natl Life Ins Co	\$211,919	0.0%	\$176,927,574	\$163,792,310	\$13,135,264
71129	Dearborn Natl Life Ins Co	\$209,754	0.0%	\$2,145,535,964	\$1,630,850,715	\$514,685,249
67148	Occidental Life Ins Co Of NC	\$198,843	0.0%	\$261,386,126	\$224,492,503	\$36,893,623
61735	Central Security Life Ins Co	\$194,187	0.0%	\$71,872,309	\$64,483,014	\$7,389,295
68047	Professional Ins Co	\$190,500	0.0%	\$108,916,752	\$72,998,774	\$35,917,978
69973	United Life Ins Co	\$179,791	0.0%	\$1,635,363,969	\$1,479,696,473	\$155,667,496
74365	Southern Pioneer Life Ins Co	\$174,678	0.0%	\$15,996,478	\$3,788,490	\$12,207,989
74918	Kilpatrick Life Ins Co	\$164,198	0.0%	\$183,836,819	\$175,831,027	\$8,005,792
61182	Aurora Natl Life Assur Co	\$160,985	0.0%	\$3,061,578,704	\$2,740,480,660	\$321,098,044
70483	Western & Southern Life Ins Co	\$156,173	0.0%	\$9,918,275,587	\$5,624,065,714	\$4,294,209,873
61859	Christian Fidelity Life Ins Co	\$155,025	0.0%	\$71,222,816	\$42,672,003	\$28,550,813
73660	Directors Life Assur Co	\$150,935	0.0%	\$29,215,690	\$27,226,691	\$1,988,999
99775	Funeral Directors Life Ins Co	\$146,404	0.0%	\$1,068,899,167	\$977,001,845	\$91,897,322
87645	United Fidelity Life Ins Co	\$146,322	0.0%	\$779,567,911	\$315,321,125	\$464,246,786

Life and Health (Cont.)

NAIC	Company Name	AR Premium	Market Share	Assets	Liabilities	Capital & Surplus
84018	Fidelity Standard Life Ins Co	\$143,908	0.0%	\$3,281,336	\$2,853,035	\$428,301
70130	Universal Guar Life Ins Co	\$136,804	0.0%	\$343,178,800	\$302,032,114	\$41,146,686
93459	Pan Amer Assur Co	\$134,380	0.0%	\$22,391,666	\$5,283,022	\$17,108,644
64238	Guaranty Income Life Ins Co	\$114,350	0.0%	\$479,514,412	\$445,512,656	\$34,001,756
81418	American Medical & Life Ins Co	\$98,198	0.0%	\$5,741,978	\$7,843,489	\$(2,101,511)
72222	Amica Life Ins Co	\$93,069	0.0%	\$1,196,382,593	\$936,068,945	\$260,313,648
80705	US Br Great West Life Assur Co	\$92,341	0.0%	\$77,558,369	\$59,205,957	\$18,352,412
88820	American Integrity Life Ins Co	\$90,370	0.0%	\$682,840	\$30,823	\$652,017
63495	First Investors Life Ins Co	\$82,646	0.0%	\$1,852,770,484	\$1,794,070,960	\$58,699,524
70416	MML Bay State Life Ins Co	\$78,644	0.0%	\$4,670,965,245	\$4,459,271,547	\$211,693,698
67628	Pekin Life Ins Co	\$75,819	0.0%	\$1,324,058,801	\$1,203,726,012	\$120,332,789
94218	Country Investors Life Assur Co	\$74,944	0.0%	\$286,451,529	\$108,138,040	\$178,313,489
61727	Central Reserve Life Ins Co	\$72,026	0.0%	\$25,755,074	\$2,097,913	\$23,657,161
70173	Universal Underwriters Life Ins Co	\$68,366	0.0%	\$160,613,987	\$137,442,560	\$23,171,427
93734	Phoenix Life & Ann Co	\$67,798	0.0%	\$45,380,354	\$23,766,053	\$21,614,301
71323	Zale Life Ins Co	\$66,769	0.0%	\$11,673,328	\$2,242,950	\$9,430,378
68772	Security Mut Life Ins Co Of NY	\$65,299	0.0%	\$2,672,043,579	\$2,533,428,909	\$138,614,670
97721	Thrivent Life Ins Co	\$63,529	0.0%	\$3,500,428,807	\$3,340,775,510	\$159,653,297
67946	Pioneer Security Life Ins Co	\$62,565	0.0%	\$132,186,579	\$22,505,616	\$109,680,963
88536	Protective Life & Annuity Ins Co	\$61,715	0.0%	\$2,093,743,896	\$1,910,302,454	\$183,441,442
69272	Sunset Life Ins Co Of Amer	\$60,720	0.0%	\$354,148,525	\$322,112,631	\$32,035,894
62880	AXA Equitable Life & Ann Co	\$59,948	0.0%	\$468,631,368	\$447,678,504	\$20,952,864
69566	Trans World Assur Co	\$57,187	0.0%	\$350,116,628	\$268,728,464	\$81,388,164
79057	Southland Natl Ins Corp	\$56,660	0.0%	\$318,144,227	\$295,257,386	\$22,886,841
68632	Vantis Life Ins Co	\$56,383	0.0%	\$874,350,771	\$804,792,997	\$69,557,774
64904	Investors Heritage Life Ins Co	\$50,710	0.0%	\$482,821,381	\$461,953,119	\$20,868,262
71463	CICA Life Ins Co of Amer	\$48,167	0.0%	\$773,303,848	\$731,320,237	\$41,983,611
60704	Wilton Reassur Life Co of NY	\$45,347	0.0%	\$910,837,657	\$804,278,633	\$106,559,024
66540	National Farmers Union Life Ins Co	\$43,557	0.0%	\$216,578,648	\$172,912,652	\$43,665,996
68039	Athene Ann & Life Assur Co of NY	\$42,764	0.0%	\$3,382,915,134	\$3,214,768,038	\$168,147,096
66265	Monarch Life Ins Co	\$39,054	0.0%	\$725,091,252	\$720,277,915	\$4,813,337
67911	Pioneer Mut Life Ins Co	\$37,540	0.0%	\$511,371,179	\$473,026,029	\$38,345,150
90638	Best Life & Hlth Ins Co	\$34,885	0.0%	\$16,176,043	\$4,768,292	\$11,407,751
61395	Beneficial Life Ins Co	\$34,563	0.0%	\$2,910,594,426	\$2,356,958,691	\$553,635,735
60518	American Hlth & Life Ins Co	\$31,899	0.0%	\$912,753,300	\$724,136,823	\$188,616,477
97241	Settlers Life Ins Co	\$31,864	0.0%	\$394,243,255	\$341,667,581	\$52,575,674
99724	LifeShield Natl Ins Co	\$31,083	0.0%	\$67,842,004	\$44,567,573	\$23,274,431
70742	Family Benefit Life Ins Co	\$30,943	0.0%	\$66,792,370	\$55,825,810	\$10,966,560
80896	Centre Life Ins Co	\$26,346	0.0%	\$1,926,095,948	\$1,828,136,570	\$97,959,378
93610	John Hancock Life & Hlth Ins Co	\$25,739	0.0%	\$10,700,129,491	\$9,954,373,192	\$745,756,299
67601	Paul Revere Variable Ann Ins Co	\$25,397	0.0%	\$56,158,883	\$14,524,847	\$41,634,036
60429	American Fidelity Life Ins Co	\$25,112	0.0%	\$433,113,521	\$364,967,871	\$68,145,650
13100	Omaha Ins Co	\$24,418	0.0%	\$43,811,355	\$22,711,381	\$21,099,974
62103	Columbian Mut Life Ins Co	\$24,007	0.0%	\$1,326,349,017	\$1,247,159,563	\$79,189,454
83984	New Found Life Ins Co	\$23,591	0.0%	\$2,048,078	\$356,902	\$1,691,176
61069	Anthem Life Ins Co	\$23,341	0.0%	\$582,363,060	\$473,225,028	\$109,138,032
97691	Life Of The South Ins Co	\$19,300	0.0%	\$81,700,411	\$60,585,845	\$21,114,566
62057	Lincoln Life & Ann Co of NY	\$19,243	0.0%	\$12,840,172,369	\$12,187,628,988	\$652,543,381
69140	First Allmerica Fin Life Ins Co	\$19,053	0.0%	\$4,240,478,852	\$4,024,041,324	\$216,437,528
42129	United Security Assur Co Of PA	\$18,496	0.0%	\$151,298,206	\$140,620,485	\$10,677,721
84522	Auto Club Life Ins Co	\$18,411	0.0%	\$562,461,921	\$488,858,902	\$73,603,019
68209	Provident Life & Cas Ins Co	\$17,716	0.0%	\$767,159,218	\$627,730,902	\$139,428,316
69779	Union Natl Life Ins Co	\$16,220	0.0%	\$18,770,418	\$4,075,714	\$14,694,703
67903	Provident Amer Life & Hlth Ins Co	\$14,636	0.0%	\$16,644,210	\$2,055,091	\$14,589,119

Life and Health (Cont.)

NAIC	Company Name	AR Premium	Market Share	Assets	Liabilities	Capital & Surplus
91693	IA Amer Life Ins Co	\$13,778	0.0%	\$241,359,293	\$100,268,849	\$141,090,444
63223	Federal Life Ins Co	\$12,676	0.0%	\$229,695,155	\$212,408,306	\$17,286,849
66109	Midwestern United Life Ins Co	\$12,254	0.0%	\$236,542,256	\$111,782,165	\$124,760,091
81442	Monitor Life Ins Co Of NY	\$11,937	0.0%	\$23,802,134	\$13,486,400	\$10,315,734
76007	Old United Life Ins Co	\$11,606	0.0%	\$91,393,882	\$45,139,693	\$46,254,189
86959	National Family Care Life Ins Co	\$10,537	0.0%	\$16,095,352	\$6,882,688	\$9,212,664
82538	National Hlth Ins Co	\$10,198	0.0%	\$13,737,124	\$2,201,398	\$11,535,726
14406	Industrial Alliance Ins & Fin Serv I	\$9,262	0.0%	\$193,736,102	\$134,095,645	\$59,640,457
97764	Idealife Ins Co	\$9,242	0.0%	\$20,463,742	\$5,642,714	\$14,821,028
60216	Amalgamated Life Ins Co	\$8,938	0.0%	\$111,781,088	\$60,781,898	\$50,999,190
85766	United Concordia Ins Co	\$8,651	0.0%	\$61,342,157	\$23,499,834	\$37,842,323
60003	Park Avenue Life Ins Co	\$7,769	0.0%	\$305,282,167	\$229,592,404	\$75,689,763
84107	Griffin Leggett Burial Ins Co	\$7,237	0.0%	\$118,180	\$3,461	\$114,719
65951	Merit Life Ins Co	\$7,085	0.0%	\$588,178,042	\$416,794,956	\$171,383,086
62421	Heritage Union Life Ins Co	\$6,198	0.0%	\$11,749,574	\$1,294,786	\$10,454,788
73504	Generation Life Ins Co	\$4,816	0.0%	\$32,347,734	\$1,713,307	\$30,634,427
78743	New Era Life Ins Co	\$4,799	0.0%	\$402,468,586	\$336,297,781	\$66,170,805
94447	Century Life Ass Co	\$4,330	0.0%	\$12,778,167	\$6,267,412	\$6,510,755
81426	Commercial Travelers Mut Ins Co	\$3,713	0.0%	\$18,038,670	\$12,096,750	\$5,941,920
82082	Citizens Natl Life Ins Co	\$3,465	0.0%	\$12,316,423	\$10,194,928	\$2,121,495
68446	Longevity Ins Co	\$3,162	0.0%	\$8,553,613	\$1,011,968	\$7,541,645
85561	MAPFRE Life Ins Co	\$3,121	0.0%	\$26,010,533	\$3,231,892	\$22,778,641
66001	American Benefit Life Ins Co	\$2,236	0.0%	\$99,673,722	\$86,384,400	\$13,289,322
69647	Catamaran Ins of Ohio Inc	\$2,064	0.0%	\$47,865,352	\$26,651,495	\$21,213,857
61581	Capitol Life Ins Co	\$2,045	0.0%	\$214,383,035	\$192,695,293	\$21,687,742
77119	Sentinel Amer Life Ins Co	\$1,949	0.0%	\$31,170,354	\$26,210,298	\$4,960,056
86371	Ullico Life Ins Co	\$1,762	0.0%	\$11,736,283	\$240,257	\$11,496,026
70955	USA Life One Ins Co Of IN	\$1,314	0.0%	\$37,030,521	\$22,816,421	\$14,214,100
62634	Delaware Amer Life Ins Co	\$1,141	0.0%	\$136,746,424	\$67,464,680	\$69,281,744
90581	Symetra Natl Life Ins Co	\$1,007	0.0%	\$16,936,532	\$6,981,198	\$9,955,334
79049	Alfa Life Ins Corp	\$874	0.0%	\$1,317,983,072	\$1,091,128,378	\$226,854,694
84077	Southern Fidelity Life Ins Co	\$827	0.0%	\$79,301	\$11,625	\$67,676
70122	Universal Fidelity Life Ins Co	\$684	0.0%	\$14,451,140	\$9,572,269	\$4,878,871
60183	S USA Life Ins Co Inc	\$572	0.0%	\$13,576,181	\$5,629,027	\$7,947,154
60250	AmFirst Ins Co	\$518	0.0%	\$41,452,630	\$6,483,889	\$34,968,741
64831	Intramercia Life Ins Co	\$420	0.0%	\$34,587,989	\$24,859,670	\$9,728,319
85189	Western United Life Assur Co	\$344	0.0%	\$990,678,290	\$928,875,685	\$61,802,605
85286	OneNation Ins Co	\$163	0.0%	\$13,286,148	\$341,000	\$12,945,148
TOTAL		\$6,649,770,679	100.0%			

Property and Casualty

NAIC	Company Name	AR Premium	Market Share	Assets	Liabilities	Capital & Surplus
25178	State Farm Mut Auto Ins Co	\$385,319,531	8.7%	\$138,797,902,951	\$58,921,027,185	\$79,876,875,766
25143	State Farm Fire & Cas Co	\$276,107,123	6.2%	\$33,480,991,866	\$21,287,152,916	\$12,193,838,950
13757	Farm Bureau Mut Ins Co Of AR Inc	\$244,979,404	5.5%	\$355,462,433	\$162,991,828	\$192,470,605
23388	Shelter Mut Ins Co	\$238,584,988	5.4%	\$2,973,777,227	\$1,291,064,674	\$1,682,712,553
18325	Southern Farm Bureau Cas Ins Co	\$229,943,882	5.2%	\$2,094,549,775	\$818,927,076	\$1,275,622,699
17230	Allstate Prop & Cas Ins Co	\$111,266,254	2.5%	\$215,540,942	\$9,585,096	\$205,955,846
21628	Farmers Ins Co Inc	\$102,675,972	2.3%	\$279,008,653	\$174,864,753	\$104,143,900
20443	Continental Cas Co	\$70,169,569	1.6%	\$43,309,655,886	\$32,154,436,631	\$11,155,219,255
42919	Progressive Northwestern Ins Co	\$66,173,387	1.5%	\$1,313,532,981	\$925,940,058	\$387,592,923
10677	Cincinnati Ins Co	\$56,440,670	1.3%	\$11,017,151,254	\$6,544,940,815	\$4,472,210,439
25941	United Serv Automobile Assn	\$56,426,423	1.3%	\$30,991,005,190	\$8,136,627,127	\$22,854,378,063
19445	National Union Fire Ins Co Of Pitts	\$55,701,276	1.3%	\$26,135,779,925	\$19,455,007,575	\$6,680,772,350
19232	Allstate Ins Co	\$52,939,781	1.2%	\$43,246,270,304	\$26,980,707,561	\$16,265,562,743
27998	Travelers Home & Marine Ins Co	\$45,045,498	1.0%	\$410,165,241	\$272,871,472	\$137,293,769
23787	Nationwide Mut Ins Co	\$44,461,439	1.0%	\$34,711,194,770	\$22,573,205,749	\$12,137,989,021
39012	Safeco Ins Co Of IL	\$42,028,881	0.9%	\$185,380,505	\$7,368,046	\$178,012,459
18988	Auto Owners Ins Co	\$41,589,759	0.9%	\$12,207,734,312	\$4,238,662,003	\$7,969,072,309
16535	Zurich Amer Ins Co	\$39,508,005	0.9%	\$30,309,699,066	\$22,294,290,200	\$8,015,408,866
35882	Geico Gen Ins Co	\$38,863,208	0.9%	\$214,803,635	\$83,698,829	\$131,104,806
25674	Travelers Prop Cas Co Of Amer	\$35,197,054	0.8%	\$933,171,265	\$428,165,314	\$505,005,951
16322	Progressive Direct Ins Co	\$34,360,475	0.8%	\$5,180,160,669	\$3,608,709,705	\$1,571,450,964
25127	State Auto Prop & Cas Ins Co	\$32,601,700	0.7%	\$2,291,463,865	\$1,662,568,448	\$628,895,417
23779	Nationwide Mut Fire Ins Co	\$31,681,868	0.7%	\$5,733,324,440	\$3,174,217,590	\$2,559,106,850
25968	USAA Cas Ins Co	\$31,391,194	0.7%	\$8,699,013,159	\$4,306,808,907	\$4,392,204,252
22055	Geico Ind Co	\$31,008,638	0.7%	\$6,962,823,404	\$2,944,541,183	\$4,018,282,221
37877	Nationwide Prop & Cas Ins Co	\$30,366,943	0.7%	\$630,839,189	\$577,061,867	\$53,777,322
11185	Foremost Ins Co Grand Rapids MI	\$30,237,956	0.7%	\$2,093,267,221	\$1,033,212,333	\$1,060,054,888
40371	Columbia Mut Ins Co	\$29,106,656	0.7%	\$368,924,449	\$200,789,203	\$168,135,246
23035	Liberty Mut Fire Ins Co	\$28,844,337	0.6%	\$5,297,887,108	\$3,995,773,620	\$1,302,113,488
12188	Alfa Vision Ins Corp	\$27,054,155	0.6%	\$96,697,555	\$49,417,665	\$47,279,890
24740	Safeco Ins Co Of Amer	\$26,808,688	0.6%	\$4,233,251,417	\$2,954,334,281	\$1,278,917,136
15512	Automobile Club Interins Exch	\$26,254,698	0.6%	\$402,142,404	\$196,446,134	\$205,696,270
18600	USAA Gen Ind Co	\$25,782,250	0.6%	\$2,933,590,822	\$1,836,893,817	\$1,096,697,005
21482	Factory Mut Ins Co	\$24,305,975	0.5%	\$15,070,065,036	\$4,928,219,299	\$10,141,845,737
21415	Employers Mut Cas Co	\$23,798,317	0.5%	\$2,721,407,264	\$1,506,429,477	\$1,214,977,787
11445	CGB Ins Co	\$23,189,371	0.5%	\$375,967,818	\$288,315,439	\$87,652,379
23043	Liberty Mut Ins Co	\$22,602,429	0.5%	\$42,655,158,668	\$26,085,858,680	\$16,569,299,988
11770	United Financial Cas Co	\$22,005,348	0.5%	\$2,301,125,168	\$1,755,050,159	\$546,075,009
21652	Farmers Ins Exch	\$21,893,973	0.5%	\$15,591,306,853	\$11,409,850,909	\$4,181,455,944
20281	Federal Ins Co	\$21,535,218	0.5%	\$32,484,336,984	\$17,655,954,301	\$14,828,382,683
22667	Ace Amer Ins Co	\$21,254,371	0.5%	\$12,150,666,209	\$9,157,758,998	\$2,992,907,211
25658	Travelers Ind Co	\$20,539,215	0.5%	\$20,724,465,599	\$14,091,059,403	\$6,633,406,196
10642	Cherokee Ins Co	\$20,239,120	0.5%	\$424,944,853	\$266,014,588	\$158,930,265
18058	Philadelphia Ind Ins Co	\$19,704,819	0.4%	\$7,182,216,895	\$4,844,841,354	\$2,337,375,541
16691	Great Amer Ins Co	\$19,407,196	0.4%	\$5,811,739,783	\$4,398,173,783	\$1,413,566,000
19240	Allstate Ind Co	\$19,391,448	0.4%	\$144,973,774	\$3,498,484	\$141,475,290
31194	Travelers Cas & Surety Co Of Amer	\$19,270,213	0.4%	\$4,225,233,665	\$2,110,576,190	\$2,114,657,475
33987	ADM Ins Co	\$18,623,890	0.4%	\$482,728,642	\$459,942,142	\$22,786,500
25135	State Automobile Mut Ins Co	\$17,940,176	0.4%	\$2,352,071,830	\$1,535,307,594	\$816,764,236
13935	Federated Mut Ins Co	\$17,804,453	0.4%	\$4,783,738,220	\$2,126,640,941	\$2,657,097,279
36781	John Deere Ins Co	\$17,435,628	0.4%	\$380,518,120	\$273,021,741	\$107,496,379
17647	United Home Ins Co	\$17,199,527	0.4%	\$29,509,799	\$20,663,682	\$8,846,117
20095	BITCO Gen Ins Corp	\$16,877,694	0.4%	\$810,940,020	\$522,442,751	\$288,497,269
13021	United Fire & Cas Co	\$15,805,470	0.4%	\$1,661,866,621	\$976,000,488	\$685,866,133

Property and Casualty (Cont.)

NAIC	Company Name	AR Premium	Market Share	Assets	Liabilities	Capital & Surplus
10111	American Bankers Ins Co Of FL	\$15,324,337	0.3%	\$1,967,504,415	\$1,403,566,495	\$563,937,920
33049	State Volunteer Mut Ins Co	\$15,125,372	0.3%	\$1,199,119,923	\$682,541,306	\$516,578,617
13528	Brotherhood Mut Ins Co	\$15,116,780	0.3%	\$469,732,018	\$280,381,442	\$189,350,576
27120	Trumbull Ins Co	\$15,035,635	0.3%	\$216,884,309	\$120,862,068	\$96,022,241
28401	American Natl Prop & Cas Co	\$14,965,318	0.3%	\$1,218,493,924	\$621,562,749	\$596,931,175
20699	Ace Prop & Cas Ins Co	\$14,757,008	0.3%	\$7,360,749,029	\$5,296,323,459	\$2,064,425,570
21407	Emcasco Ins Co	\$14,527,698	0.3%	\$436,624,689	\$311,965,461	\$124,659,228
23469	American Modern Home Ins Co	\$14,388,453	0.3%	\$1,286,171,803	\$905,710,700	\$380,461,103
26298	Metropolitan Prop & Cas Ins Co	\$14,354,067	0.3%	\$5,645,610,836	\$3,257,655,249	\$2,387,955,587
22063	Government Employees Ins Co	\$13,947,923	0.3%	\$23,472,632,076	\$10,029,664,979	\$13,442,967,097
32700	Owners Ins Co	\$13,718,876	0.3%	\$3,721,925,886	\$2,326,428,773	\$1,395,497,113
27626	Firstcomp Ins Co	\$13,587,731	0.3%	\$304,859,191	\$171,105,973	\$133,753,218
11371	Great West Cas Co	\$13,418,957	0.3%	\$1,848,385,475	\$1,275,257,121	\$573,128,354
22292	Hanover Ins Co	\$13,253,219	0.3%	\$6,482,091,183	\$4,429,675,903	\$2,052,415,280
10335	Bridgefield Cas Ins Co	\$12,875,184	0.3%	\$56,942,782	\$8,512,343	\$48,430,439
11150	Arch Ins Co	\$12,489,007	0.3%	\$3,200,859,275	\$2,422,491,339	\$778,367,936
40649	Economy Premier Assur Co	\$12,403,578	0.3%	\$86,661,561	\$40,740,178	\$45,921,383
27235	Auto Club Family Ins Co	\$12,196,765	0.3%	\$97,625,438	\$55,387,675	\$42,237,763
41840	Allmerica Fin Benefit Ins Co	\$11,581,390	0.3%	\$34,667,673	\$28,423	\$34,639,250
28223	Nationwide Agribusiness Ins Co	\$11,454,831	0.3%	\$529,070,519	\$460,263,057	\$68,807,462
36684	Riverport Ins Co	\$11,421,738	0.3%	\$111,994,407	\$73,538,915	\$38,455,492
25844	Union Ins Co	\$11,304,728	0.3%	\$115,793,078	\$86,960,327	\$28,832,751
15725	Cameron Mut Ins Co	\$11,234,473	0.3%	\$77,420,168	\$42,542,742	\$34,877,426
13897	Farmers Mut Hail Ins Co Of IA	\$11,233,290	0.3%	\$676,326,120	\$366,798,193	\$309,527,927
10251	American Underwriters Ins Co	\$11,178,161	0.3%	\$7,550,282	\$2,560,540	\$4,989,742
23736	Direct Natl Ins Co	\$10,916,813	0.2%	\$17,704,043	\$10,953,558	\$6,750,485
37907	Allstate Vehicle & Prop Ins Co	\$10,819,817	0.2%	\$24,311,712	\$748,832	\$23,562,880
30210	Esurance Prop & Cas Ins Co	\$10,411,406	0.2%	\$113,191,891	\$86,747,785	\$26,444,106
37273	Axis Ins Co	\$10,377,349	0.2%	\$1,483,774,009	\$905,626,479	\$578,147,530
42986	Standard Guar Ins Co	\$10,349,849	0.2%	\$490,774,011	\$330,041,448	\$160,732,563
20087	National Ind Co	\$10,300,783	0.2%	\$166,985,400,908	\$72,987,749,044	\$93,997,651,864
39039	Rural Comm Ins Co	\$10,221,075	0.2%	\$3,758,240,333	\$3,139,754,097	\$618,486,236
12548	American Agri Business Ins Co	\$10,142,596	0.2%	\$725,792,178	\$697,336,745	\$28,455,433
34690	Property & Cas Ins Co Of Hartford	\$10,082,297	0.2%	\$229,682,005	\$121,723,880	\$107,958,125
24147	Old Republic Ins Co	\$10,050,116	0.2%	\$2,609,357,023	\$1,573,573,956	\$1,035,783,067
39217	QBE Ins Corp	\$9,726,931	0.2%	\$2,113,301,678	\$1,432,057,094	\$681,244,584
34312	Producers Agriculture Ins Co	\$9,675,678	0.2%	\$302,171,503	\$246,187,963	\$55,983,540
42376	Technology Ins Co Inc	\$9,407,566	0.2%	\$1,502,380,648	\$1,022,944,128	\$479,436,520
21253	Garrison Prop & Cas Ins Co	\$9,091,081	0.2%	\$1,492,585,851	\$892,485,021	\$600,100,830
15032	Guideone Mut Ins Co	\$9,076,508	0.2%	\$1,695,178,682	\$1,253,059,610	\$442,119,072
19380	American Home Assur Co	\$8,896,114	0.2%	\$26,376,943,831	\$19,129,040,400	\$7,247,903,431
24538	Republic Underwriters Ins Co	\$8,821,014	0.2%	\$647,367,173	\$395,394,816	\$251,972,357
12810	MDOW Ins Co	\$8,687,456	0.2%	\$13,894,775	\$8,655,619	\$5,239,156
37478	Hartford Ins Co Of The Midwest	\$8,628,280	0.2%	\$581,457,372	\$128,524,702	\$452,932,670
31325	Acadia Ins Co	\$8,590,987	0.2%	\$153,271,937	\$101,984,725	\$51,287,212
19682	Hartford Fire In Co	\$8,394,334	0.2%	\$25,520,152,924	\$11,722,706,543	\$13,797,446,381
11000	Sentinel Ins Co Ltd	\$8,150,411	0.2%	\$224,787,336	\$71,982,901	\$152,804,435
18767	Church Mut Ins Co	\$7,925,430	0.2%	\$1,453,567,001	\$916,906,477	\$536,660,524
15873	United Guar Residential Ins Co	\$7,917,869	0.2%	\$3,247,682,924	\$1,863,851,838	\$1,383,831,086
34495	Doctors Co An Interins Exch	\$7,874,948	0.2%	\$3,559,777,673	\$1,737,908,690	\$1,821,868,983
11991	National Cas Co	\$7,796,328	0.2%	\$285,389,372	\$155,248,382	\$130,140,990
31895	American Interstate Ins Co	\$7,699,663	0.2%	\$1,185,591,641	\$807,849,633	\$377,742,008
25615	Charter Oak Fire Ins Co	\$7,506,185	0.2%	\$926,061,791	\$672,413,442	\$253,648,349
18236	Agents Mut Ins Co	\$7,498,157	0.2%	\$3,131,957	\$1,636,262	\$1,495,695

Property and Casualty (Cont.)

NAIC	Company Name	AR Premium	Market Share	Assets	Liabilities	Capital & Surplus
10804	Continental Western Ins Co	\$7,385,025	0.2%	\$166,900,787	\$79,210,647	\$87,690,140
19046	Travelers Cas Ins Co Of Amer	\$7,367,522	0.2%	\$1,918,485,444	\$1,352,302,547	\$566,182,897
42404	Liberty Ins Corp	\$7,288,895	0.2%	\$232,041,001	\$8,797,185	\$223,243,816
38318	Starr Ind & Liab Co	\$7,283,321	0.2%	\$3,755,060,445	\$1,922,733,965	\$1,832,326,480
37257	Praetorian Ins Co	\$7,259,568	0.2%	\$996,841,152	\$731,911,588	\$264,929,564
11839	Circle Star Ins Co RRG	\$7,187,139	0.2%	\$2,861,013	\$1,032,067	\$1,828,946
36447	LM Gen Ins Co	\$7,123,129	0.2%	\$10,329,490	\$86,224	\$10,243,266
25682	Travelers Ind Co Of CT	\$7,065,483	0.2%	\$1,117,795,981	\$734,728,684	\$383,067,297
10783	Cornerstone Natl Ins Co	\$6,924,627	0.2%	\$35,737,503	\$24,196,323	\$11,541,180
25240	NAU Country Ins Co	\$6,915,701	0.2%	\$1,321,064,169	\$1,076,387,808	\$244,676,361
40142	American Zurich Ins Co	\$6,840,046	0.2%	\$264,457,506	\$106,992,567	\$157,464,939
24082	Ohio Security Ins Co	\$6,810,958	0.2%	\$16,035,806	\$854,009	\$15,181,797
25666	Travelers Ind Co Of Amer	\$6,798,702	0.2%	\$635,734,673	\$432,934,507	\$202,800,166
10014	Affiliated Fm Ins Co	\$6,758,043	0.2%	\$2,528,717,670	\$1,131,067,901	\$1,397,649,769
23841	New Hampshire Ins Co	\$6,748,403	0.2%	\$314,086,472	\$147,972,163	\$166,114,309
44369	Imperial Fire & Cas Ins Co	\$6,706,259	0.2%	\$80,737,967	\$39,719,830	\$41,018,137
28746	Equity Ins Co	\$6,367,604	0.1%	\$71,344,317	\$40,596,798	\$30,747,519
35319	United Automobile Ins Co	\$6,281,324	0.1%	\$343,844,399	\$267,565,722	\$76,278,677
16047	Southern Pioneer Prop & Cas Ins Co	\$6,209,472	0.1%	\$34,766,376	\$22,193,886	\$12,572,490
20427	American Cas Co Of Reading PA	\$6,085,595	0.1%	\$146,336,202	\$44,319	\$146,291,883
32620	National Interstate Ins Co	\$5,951,049	0.1%	\$1,117,627,560	\$832,947,856	\$284,679,704
10510	Carolina Cas Ins Co	\$5,941,568	0.1%	\$181,825,888	\$86,271,465	\$95,554,423
24015	Northland Ins Co	\$5,935,239	0.1%	\$1,166,235,049	\$627,294,687	\$538,940,362
21113	United States Fire Ins Co	\$5,906,947	0.1%	\$3,248,634,293	\$2,350,018,339	\$898,615,954
19070	Standard Fire Ins Co	\$5,860,612	0.1%	\$3,627,132,137	\$2,411,960,075	\$1,215,172,062
34789	21st Century Centennial Ins Co	\$5,795,964	0.1%	\$574,071,755	\$11,318,358	\$562,753,397
42749	Traders Ins Co	\$5,792,500	0.1%	\$46,268,143	\$31,519,647	\$14,748,496
37885	XL Specialty Ins Co	\$5,756,638	0.1%	\$432,658,950	\$289,478,624	\$143,180,326
19720	American Alt Ins Corp	\$5,723,438	0.1%	\$526,391,380	\$357,470,046	\$168,921,334
10855	Cypress Ins Co	\$5,720,860	0.1%	\$1,203,207,812	\$891,680,418	\$311,527,394
39845	Westport Ins Corp	\$5,698,745	0.1%	\$5,215,702,758	\$3,585,174,746	\$1,630,528,012
26247	American Guar & Liab Ins	\$5,684,272	0.1%	\$263,514,735	\$82,577,646	\$180,937,089
15130	Encompass Ind Co	\$5,622,243	0.1%	\$29,363,849	\$4,076,797	\$25,287,052
19615	American Reliable Ins Co	\$5,615,636	0.1%	\$315,303,016	\$226,103,943	\$89,199,073
23965	Norfolk & Dedham Mut Fire Ins Co	\$5,602,115	0.1%	\$359,907,054	\$177,901,614	\$182,005,440
21180	Sentry Select Ins Co	\$5,596,753	0.1%	\$658,607,814	\$423,480,932	\$235,126,882
26344	Great Amer Assur Co	\$5,552,397	0.1%	\$19,213,892	\$5,360	\$19,208,532
15105	Safety Natl Cas Corp	\$5,520,973	0.1%	\$4,985,126,645	\$3,617,497,180	\$1,367,629,465
34339	Metropolitan Grp Prop & Cas Ins Co	\$5,473,557	0.1%	\$611,683,651	\$233,375,180	\$378,308,471
19410	Commerce & Industry Ins Co	\$5,441,462	0.1%	\$4,770,784,966	\$3,145,864,980	\$1,624,919,986
25623	Phoenix Ins Co	\$5,240,064	0.1%	\$4,196,159,024	\$2,456,771,571	\$1,739,387,453
23450	American Family Home Ins Co	\$5,227,261	0.1%	\$532,605,794	\$376,945,354	\$155,660,440
13137	Viking Ins Co Of WI	\$5,205,098	0.1%	\$387,726,957	\$208,654,595	\$179,072,362
28535	Triangle Ins Co Inc	\$5,165,595	0.1%	\$66,620,377	\$40,646,778	\$25,973,599
28452	Republic Mortgage Ins Co	\$4,974,616	0.1%	\$803,216,099	\$770,747,330	\$32,468,769
10464	Canal Ins Co	\$4,938,477	0.1%	\$818,759,661	\$371,548,109	\$447,211,552
39306	Fidelity & Deposit Co Of MD	\$4,936,671	0.1%	\$223,768,523	\$55,295,807	\$168,472,716
38970	Markel Ins Co	\$4,904,016	0.1%	\$1,386,875,058	\$979,658,742	\$407,216,316
19216	Southern Ins Co	\$4,861,796	0.1%	\$44,666,846	\$14,006,928	\$30,659,918
13838	Farmland Mut Ins Co	\$4,817,246	0.1%	\$521,114,166	\$353,563,344	\$167,550,822
25011	Wesco Ins Co	\$4,802,708	0.1%	\$1,113,582,513	\$898,052,435	\$215,530,078
29599	US Specialty Ins Co	\$4,794,948	0.1%	\$1,890,819,611	\$1,313,753,067	\$577,066,544
29459	Twin City Fire Ins Co	\$4,772,446	0.1%	\$650,422,253	\$361,513,736	\$288,908,517
21709	Truck Ins Exch	\$4,742,787	0.1%	\$2,077,583,374	\$1,458,878,815	\$618,704,559

Property and Casualty (Cont.)

NAIC	Company Name	AR Premium	Market Share	Assets	Liabilities	Capital & Surplus
20052	National Liab & Fire Ins Co	\$4,718,271	0.1%	\$2,229,863,351	\$1,262,478,267	\$967,385,084
20508	Valley Forge Ins Co	\$4,666,333	0.1%	\$73,715,106	\$44,145	\$73,670,961
11118	Federated Rural Electric Ins Exch	\$4,660,968	0.1%	\$473,444,232	\$306,295,880	\$167,148,352
11843	Medical Protective Co	\$4,644,664	0.1%	\$2,699,597,231	\$1,110,523,139	\$1,589,074,092
21687	Mid Century Ins Co	\$4,600,916	0.1%	\$3,765,866,595	\$2,779,425,608	\$986,440,987
28665	Cincinnati Cas Co	\$4,593,111	0.1%	\$371,768,778	\$41,548,185	\$330,220,593
27154	Atlantic Specialty Ins Co	\$4,579,225	0.1%	\$2,550,903,113	\$1,829,388,399	\$721,514,714
20478	National Fire Ins Co Of Hartford	\$4,561,563	0.1%	\$121,108,518	\$92,689	\$121,015,829
23361	Shelter Gen Ins Co	\$4,516,402	0.1%	\$144,221,442	\$77,590,816	\$66,630,626
41181	Universal Underwriters Ins Co	\$4,483,812	0.1%	\$363,810,365	\$24,919,817	\$338,890,548
11398	Guarantee Ins Co	\$4,374,254	0.1%	\$420,590,301	\$373,133,266	\$47,457,035
38652	American Modern Select Ins Co	\$4,369,867	0.1%	\$288,491,912	\$243,612,843	\$44,879,069
33790	Radian Guar Inc	\$4,325,756	0.1%	\$3,643,318,258	\$2,318,133,997	\$1,325,184,261
37613	Farmers Union Mut Ins Co	\$4,292,021	0.1%	\$4,589,839	\$2,365,093	\$2,224,746
29858	Mortgage Guar Ins Corp	\$4,258,895	0.1%	\$4,162,463,705	\$2,644,785,374	\$1,517,678,331
22314	RSUI Ind Co	\$4,248,635	0.1%	\$3,286,793,888	\$1,820,655,444	\$1,466,138,444
20397	Vigilant Ins Co	\$4,167,834	0.1%	\$502,538,912	\$210,226,134	\$292,312,778
29068	IDS Prop Cas Ins Co	\$4,101,898	0.1%	\$1,414,322,992	\$854,378,743	\$559,944,249
19429	Insurance Co Of The State Of PA	\$4,087,781	0.1%	\$307,412,533	\$187,504,227	\$119,908,306
23280	The Cincinnati Ind Co	\$4,082,679	0.1%	\$123,020,536	\$37,441,282	\$85,579,254
10204	Consumers Ins Usa Inc	\$4,026,234	0.1%	\$72,031,162	\$41,700,980	\$30,330,182
13056	RLI Ins Co	\$4,007,648	0.1%	\$1,706,981,908	\$857,685,062	\$849,296,846
20044	Berkshire Hathaway Homestate Ins Co	\$3,985,618	0.1%	\$2,008,135,254	\$848,620,818	\$1,159,514,436
21423	Union Ins Co Of Providence	\$3,961,206	0.1%	\$113,557,379	\$58,041,627	\$55,515,752
33391	ProAssurance Ind Co Inc	\$3,860,784	0.1%	\$1,539,315,245	\$872,064,963	\$667,250,282
13714	Pharmacists Mut Ins Co	\$3,817,136	0.1%	\$258,815,995	\$161,052,804	\$97,763,191
41343	HDI Gerling Amer Ins Co	\$3,816,314	0.1%	\$300,519,821	\$169,427,611	\$131,092,210
24554	XL Ins Amer Inc	\$3,794,444	0.1%	\$752,911,588	\$520,619,197	\$232,292,391
18295	Lafayette Ins Co	\$3,776,505	0.1%	\$176,396,717	\$98,071,574	\$78,325,143
11042	Stonetrust Commercial Ins Co	\$3,767,014	0.1%	\$142,325,168	\$85,683,890	\$56,641,278
38776	Sirius Amer Ins Co	\$3,728,608	0.1%	\$1,550,473,635	\$929,885,908	\$620,587,727
13634	Essent Guar Inc	\$3,714,769	0.1%	\$817,255,685	\$352,029,946	\$465,225,739
35289	Continental Ins Co	\$3,636,409	0.1%	\$1,995,334,145	\$557,993,041	\$1,437,341,104
30104	Hartford Underwriters Ins Co	\$3,558,010	0.1%	\$1,581,752,380	\$961,434,697	\$620,317,683
19038	Travelers Cas & Surety Co	\$3,547,542	0.1%	\$16,436,177,879	\$9,966,707,354	\$6,469,470,525
38458	Genworth Mortgage Ins Corp	\$3,545,627	0.1%	\$2,696,361,496	\$1,336,476,044	\$1,359,885,452
29424	Hartford Cas Ins Co	\$3,516,198	0.1%	\$2,233,840,835	\$1,320,500,121	\$913,340,714
13565	Arkansas Mut Ins Co	\$3,509,130	0.1%	\$6,932,641	\$4,708,939	\$2,223,702
19402	AIG Prop Cas Co	\$3,508,423	0.1%	\$5,025,917,295	\$3,438,785,517	\$1,587,131,778
38911	Berkley Natl Ins Co	\$3,495,180	0.1%	\$86,518,367	\$36,859,839	\$49,658,528
13188	Western Surety Co	\$3,367,617	0.1%	\$1,998,252,964	\$630,226,850	\$1,368,026,114
19658	Bristol W Ins Co	\$3,328,336	0.1%	\$125,209,027	\$79,796,707	\$45,412,320
20494	Transportation Ins Co	\$3,327,426	0.1%	\$82,220,451	\$92,540	\$82,127,911
14974	Pennsylvania Lumbermens Mut Ins	\$3,267,210	0.1%	\$445,050,850	\$333,593,282	\$111,457,568
11255	Caterpillar Ins Co	\$3,200,890	0.1%	\$660,672,370	\$388,745,616	\$271,926,754
36625	Old Reliable Cas Co	\$3,163,256	0.1%	\$6,053,643	\$1,046,483	\$5,007,160
14982	Penn Millers Ins Co	\$3,077,985	0.1%	\$147,446,402	\$64,133,856	\$83,312,546
22012	Motors Ins Corp	\$3,018,210	0.1%	\$2,458,717,875	\$1,398,802,600	\$1,059,915,275
37869	Pre Paid Legal Cas Inc	\$2,997,184	0.1%	\$17,728,388	\$2,650,178	\$15,078,210
16608	New York Marine & Gen Ins Co	\$2,973,704	0.1%	\$1,062,939,183	\$710,297,431	\$352,641,752
23809	Granite State Ins Co	\$2,955,431	0.1%	\$34,374,358	\$3,500,166	\$30,874,192
19917	Liberty Ins Underwriters Inc	\$2,954,610	0.1%	\$174,395,985	\$51,496,582	\$122,899,403
43494	American Hallmark Ins Co Of TX	\$2,954,541	0.1%	\$344,057,908	\$222,781,194	\$121,276,714
10723	Nationwide Assur Co	\$2,912,648	0.1%	\$153,701,631	\$93,307,740	\$60,393,891

Property and Casualty (Cont.)

NAIC	Company Name	AR Premium	Market Share	Assets	Liabilities	Capital & Surplus
35300	Allianz Global Risks US Ins Co	\$2,897,529	0.1%	\$3,322,664,851	\$2,563,583,921	\$759,080,930
23396	Amerisure Mut Ins Co	\$2,891,700	0.1%	\$2,069,743,432	\$1,226,736,303	\$843,007,129
36064	Hanover Amer Ins Co	\$2,855,685	0.1%	\$29,232,042	\$45,045	\$29,186,997
43575	Indemnity Ins Co Of North Amer	\$2,807,859	0.1%	\$404,027,923	\$292,045,979	\$111,981,944
10166	Accident Fund Ins Co of Amer	\$2,758,139	0.1%	\$2,387,026,798	\$1,636,090,648	\$750,936,150
38245	BCS Ins Co	\$2,665,407	0.1%	\$279,607,832	\$122,418,148	\$157,189,684
12114	National Security Fire & Cas Co	\$2,656,817	0.1%	\$73,639,966	\$41,325,956	\$32,314,010
19062	Automobile Ins Co Of Hartford CT	\$2,642,952	0.1%	\$1,013,208,296	\$692,425,939	\$320,782,357
11004	Alfa Specialty Ins Corp	\$2,637,863	0.1%	\$52,775,157	\$25,979,726	\$26,795,431
10030	Westchester Fire Ins Co	\$2,635,739	0.1%	\$2,011,859,711	\$1,105,801,577	\$906,058,134
11800	Foremost Prop & Cas Ins Co	\$2,618,856	0.1%	\$70,224,093	\$52,556,360	\$17,667,733
12416	Protective Ins Co	\$2,616,862	0.1%	\$791,785,634	\$394,394,897	\$397,390,737
21458	Employers Ins of Wausau	\$2,575,866	0.1%	\$5,277,707,190	\$3,884,543,021	\$1,393,164,169
18023	Star Ins Co	\$2,549,533	0.1%	\$963,829,942	\$639,545,335	\$324,284,607
22837	AGCS Marine Ins Co	\$2,515,383	0.1%	\$328,306,416	\$163,715,848	\$164,590,568
16705	Dealers Assur Co	\$2,484,661	0.1%	\$86,349,464	\$31,957,840	\$54,391,624
22306	Massachusetts Bay Ins Co	\$2,427,581	0.1%	\$62,749,834	\$22,923	\$62,726,911
40460	Sagamore Ins Co	\$2,419,568	0.1%	\$156,080,634	\$31,419,822	\$124,660,812
12304	Accident Fund Gen Ins Co	\$2,415,234	0.1%	\$172,817,199	\$113,532,056	\$59,285,143
33600	LM Ins Corp	\$2,403,594	0.1%	\$118,026,726	\$4,324,605	\$113,702,121
24074	Ohio Cas Ins Co	\$2,353,409	0.1%	\$5,408,162,296	\$3,878,379,246	\$1,529,783,050
21873	Firemans Fund Ins Co	\$2,300,902	0.1%	\$9,434,599,317	\$7,300,424,121	\$2,134,175,196
20109	BITCO Natl Ins Co	\$2,270,735	0.1%	\$471,687,803	\$318,608,929	\$153,078,874
24414	General Cas Co Of WI	\$2,263,772	0.1%	\$762,322,232	\$452,691,221	\$309,631,011
24988	Sentry Ins A Mut Co	\$2,249,495	0.1%	\$6,981,318,965	\$2,816,902,887	\$4,164,416,078
21326	Empire Fire & Marine Ins Co	\$2,218,029	0.0%	\$79,631,868	\$35,236,315	\$44,395,553
20303	Great Northern Ins Co	\$2,211,205	0.0%	\$1,641,723,366	\$1,164,754,275	\$476,969,091
33588	First Liberty Ins Corp	\$2,197,842	0.0%	\$22,597,699	\$344,511	\$22,253,188
23612	Midwest Employers Cas Co	\$2,191,618	0.0%	\$124,041,549	\$24,699,215	\$99,342,334
11630	Jefferson Ins Co	\$2,180,943	0.0%	\$66,911,983	\$21,480,405	\$45,431,578
40045	Starnet Ins Co	\$2,134,553	0.0%	\$219,676,806	\$108,423,833	\$111,252,973
19518	Catlin Ins Co	\$2,104,426	0.0%	\$230,321,433	\$166,640,727	\$63,680,706
10120	Everest Natl Ins Co	\$2,072,395	0.0%	\$692,002,385	\$555,921,475	\$136,080,910
24767	St Paul Fire & Marine Ins Co	\$2,040,322	0.0%	\$18,917,210,617	\$12,923,140,386	\$5,994,070,231
10178	FCCI Ins Co	\$2,010,327	0.0%	\$1,709,074,611	\$1,130,366,729	\$578,707,882
10895	Midwest Ins Co	\$1,996,553	0.0%	\$83,539,211	\$56,101,070	\$27,438,141
22136	Great Amer Ins Co of NY	\$1,955,058	0.0%	\$47,191,278	\$-	\$47,191,278
36137	Travelers Commercial Ins Co	\$1,930,418	0.0%	\$344,667,982	\$250,319,730	\$94,348,252
23248	Occidental Fire & Cas Co Of NC	\$1,912,814	0.0%	\$517,974,786	\$355,114,176	\$162,860,610
10847	Cumis Ins Society Inc	\$1,912,183	0.0%	\$2,062,800,695	\$1,347,915,590	\$714,885,105
26433	Harco Natl Ins Co	\$1,906,784	0.0%	\$350,273,218	\$167,043,028	\$183,230,190
14206	Holyoke Mut Ins Co In Salem	\$1,902,407	0.0%	\$223,168,083	\$127,889,740	\$95,278,343
26310	Granite Re Inc	\$1,865,997	0.0%	\$39,107,983	\$20,592,632	\$18,515,351
33162	Bankers Ins Co	\$1,863,016	0.0%	\$162,666,764	\$93,562,781	\$69,103,983
42803	Guideone Elite Ins Co	\$1,862,288	0.0%	\$27,054,288	\$5,974,861	\$21,079,427
42307	Navigators Ins Co	\$1,853,237	0.0%	\$2,454,029,605	\$1,560,083,638	\$893,945,967
24260	Progressive Cas Ins Co	\$1,847,921	0.0%	\$6,061,656,758	\$4,450,278,978	\$1,611,377,780
41513	Foremost Signature Ins Co	\$1,801,435	0.0%	\$93,542,059	\$73,755,004	\$19,787,055
11223	Safeway Ins Co Of AL	\$1,798,795	0.0%	\$60,057,532	\$28,667,456	\$31,390,076
28304	Federated Serv Ins Co	\$1,795,767	0.0%	\$428,303,263	\$235,040,528	\$193,262,735
22357	Hartford Accident & Ind Co	\$1,777,089	0.0%	\$11,348,371,324	\$8,023,487,026	\$3,324,884,298
24112	Westfield Ins Co	\$1,761,874	0.0%	\$2,536,054,216	\$1,493,012,840	\$1,043,041,376
20141	National Trust Ins Co	\$1,760,647	0.0%	\$35,462,218	\$(808,580)	\$36,270,798
19887	Trinity Universal Ins Co	\$1,757,637	0.0%	\$2,200,122,184	\$1,256,699,167	\$943,423,017

Property and Casualty (Cont.)

NAIC	Company Name	AR Premium	Market Share	Assets	Liabilities	Capital & Surplus
23418	Mid Continent Cas Co	\$1,726,539	0.0%	\$483,409,332	\$340,732,478	\$142,676,854
19488	Amerisure Ins Co	\$1,702,052	0.0%	\$752,182,243	\$527,674,318	\$224,507,925
10023	Alliance Of Nonprofits For Ins RRG	\$1,700,738	0.0%	\$73,473,942	\$44,943,304	\$28,530,638
21105	North River Ins Co	\$1,639,549	0.0%	\$945,822,334	\$681,067,855	\$264,754,479
12870	Sentruiy Cas Co	\$1,629,082	0.0%	\$140,073,624	\$96,947,775	\$43,125,849
21857	American Ins Co	\$1,619,035	0.0%	\$323,726,213	\$34,026,054	\$289,700,159
43656	Louisiana Med Mut Ins Co	\$1,600,400	0.0%	\$421,471,800	\$215,492,282	\$205,979,518
25054	Hudson Ins Co	\$1,587,533	0.0%	\$1,042,651,623	\$602,476,473	\$440,175,150
23663	National Amer Ins Co	\$1,578,266	0.0%	\$184,685,403	\$121,372,874	\$63,312,529
29580	Berkley Regional Ins Co	\$1,571,163	0.0%	\$700,390,562	\$33,819,568	\$666,570,994
19801	Argonaut Ins Co	\$1,562,611	0.0%	\$1,280,403,500	\$889,638,529	\$390,764,971
40827	Virginia Surety Co Inc	\$1,556,717	0.0%	\$1,022,672,656	\$721,883,548	\$300,789,108
30945	Plaza Ins Co	\$1,556,132	0.0%	\$64,793,434	\$38,520,932	\$26,272,502
23582	Harleysville Ins Co	\$1,543,386	0.0%	\$120,507,615	\$95,527,741	\$24,979,874
19976	Amica Mut Ins Co	\$1,530,192	0.0%	\$5,061,654,429	\$2,301,898,943	\$2,759,755,486
42757	Agri Gen Ins Co	\$1,526,622	0.0%	\$188,222,552	\$1,220,554	\$187,001,998
40843	Universal Underwriters Of TX Ins	\$1,504,996	0.0%	\$12,720,099	\$2,608,687	\$10,111,412
32220	21st Century N Amer Ins Co	\$1,492,874	0.0%	\$577,638,236	\$32,616,304	\$545,021,932
12696	America First Ins Co	\$1,486,575	0.0%	\$14,103,865	\$23,537	\$14,080,328
23728	National Gen Ins Co	\$1,474,799	0.0%	\$58,391,769	\$30,469,104	\$27,922,665
42978	American Security Ins Co	\$1,469,812	0.0%	\$1,915,801,260	\$1,254,294,461	\$661,506,799
32387	Star Cas Ins Co	\$1,461,337	0.0%	\$17,102,363	\$7,456,373	\$9,645,990
19879	Security Natl Ins Co	\$1,454,095	0.0%	\$701,461,676	\$577,888,985	\$123,572,691
11126	Sompo Japan Ins Co of Amer	\$1,451,540	0.0%	\$1,238,485,340	\$640,209,003	\$598,276,337
21881	National Surety Corp	\$1,442,066	0.0%	\$161,037,183	\$32,028,864	\$129,008,319
21784	Firemens Ins Co Of Washington DC	\$1,439,264	0.0%	\$97,037,067	\$65,393,417	\$31,643,650
22322	Greenwich Ins Co	\$1,402,214	0.0%	\$1,073,077,237	\$675,738,142	\$397,339,095
14354	Jewelers Mut Ins Co	\$1,392,640	0.0%	\$338,736,201	\$131,021,136	\$207,715,065
18333	Peerless Ind Ins Co	\$1,383,570	0.0%	\$190,231,127	\$10,002,204	\$180,228,923
27251	PMI Mortgage Ins Co	\$1,354,290	0.0%	\$1,315,351,236	\$2,762,349,582	\$(1,446,998,346)
22756	Horace Mann Prop & Cas Ins Co	\$1,351,090	0.0%	\$282,154,786	\$160,125,529	\$122,029,257
24171	Netherlands Ins Co The	\$1,350,482	0.0%	\$91,795,527	\$6,819,835	\$84,975,692
21164	Dairyland Ins Co	\$1,344,218	0.0%	\$1,194,949,208	\$709,694,304	\$485,254,904
23108	Lumbermens Underwriting Alliance	\$1,331,259	0.0%	\$298,282,677	\$320,785,428	\$(22,502,751)
26182	Harleysville Worcester Ins Co	\$1,320,506	0.0%	\$163,238,097	\$110,434,030	\$52,804,067
13927	Homesite Ins Co Of The Midwest	\$1,312,441	0.0%	\$301,013,770	\$202,214,342	\$98,799,428
26077	Lancer Ins Co	\$1,307,473	0.0%	\$574,972,414	\$385,493,236	\$189,479,178
10641	Endurance Amer Ins Co	\$1,300,612	0.0%	\$1,243,856,448	\$1,002,655,086	\$241,201,362
10718	Retailers Cas Ins Co	\$1,291,471	0.0%	\$74,042,767	\$42,077,624	\$31,965,143
26832	Great Amer Alliance Ins Co	\$1,281,756	0.0%	\$29,111,462	\$-	\$29,111,462
12873	Privilege Underwriters Recp Exch	\$1,276,219	0.0%	\$219,951,543	\$151,270,905	\$68,680,638
16578	Stillwater Prop & Cas Ins Co	\$1,263,167	0.0%	\$119,042,685	\$6,647,847	\$112,394,838
10349	Acceptance Cas Ins Co	\$1,253,466	0.0%	\$71,503,259	\$22,076,756	\$49,426,503
10945	Tokio Marine Amer Ins Co	\$1,224,189	0.0%	\$1,349,243,923	\$851,924,554	\$497,319,369
34037	Hallmark Ins Co	\$1,219,181	0.0%	\$241,546,755	\$158,294,755	\$83,252,000
11523	Wright Natl Flood Ins Co	\$1,210,609	0.0%	\$17,667,730	\$6,793,573	\$10,874,157
34274	Central States Ind Co Of Omaha	\$1,210,131	0.0%	\$434,991,266	\$71,242,657	\$363,748,609
37648	Permanent Gen Assur Corp	\$1,196,137	0.0%	\$260,114,914	\$170,276,857	\$89,838,057
12831	State Natl Ins Co Inc	\$1,194,299	0.0%	\$290,718,867	\$74,877,022	\$215,841,845
12262	Pennsylvania Manufacturers Assoc Ins	\$1,194,001	0.0%	\$834,044,074	\$567,974,963	\$266,069,111
10639	Attorneys Liab Assur Society Inc RRG	\$1,192,657	0.0%	\$2,036,038,978	\$1,441,891,646	\$594,147,332
27855	Zurich Amer Ins Co Of IL	\$1,183,097	0.0%	\$53,641,553	\$18,349,257	\$35,292,296
20516	Euler Hermes N Amer Ins Co	\$1,178,741	0.0%	\$420,771,057	\$277,513,433	\$143,257,624
10952	Transamerica Cas Ins Co	\$1,172,624	0.0%	\$314,274,524	\$183,948,515	\$130,326,009

Property and Casualty (Cont.)

NAIC	Company Name	AR Premium	Market Share	Assets	Liabilities	Capital & Surplus
32603	Berkley Ins Co	\$1,150,676	0.0%	\$16,934,115,493	\$11,496,925,117	\$5,437,190,376
42994	Progressive Classic Ins Co	\$1,133,193	0.0%	\$334,832,098	\$236,822,591	\$98,009,507
26492	Courtesy Ins Co	\$1,104,543	0.0%	\$735,449,537	\$393,827,254	\$341,622,283
42617	MAG Mut Ins Co	\$1,064,235	0.0%	\$1,635,632,573	\$862,371,259	\$773,261,314
38601	MIC Prop & Cas Ins Corp	\$1,037,174	0.0%	\$91,330,091	\$37,375,465	\$53,954,626
12777	Chubb Ind Ins Co	\$1,026,508	0.0%	\$351,113,116	\$210,450,872	\$140,662,244
28932	Markel Amer Ins Co	\$1,013,410	0.0%	\$323,705,948	\$186,165,299	\$137,540,649
20117	California Cas Ind Exch	\$1,011,327	0.0%	\$557,643,295	\$238,522,789	\$319,120,506
37915	Essentia Ins Co	\$995,433	0.0%	\$55,119,774	\$24,941,257	\$30,178,517
10690	Allied World Natl Assur Co	\$989,680	0.0%	\$270,261,732	\$140,605,100	\$129,656,632
24319	Allied World Surplus Lines Ins Co	\$964,122	0.0%	\$258,166,029	\$165,615,736	\$92,550,293
26921	Everest Reins Co	\$963,253	0.0%	\$9,616,200,650	\$6,723,201,971	\$2,892,998,679
14559	Guideone Specialty Mut Ins Co	\$962,180	0.0%	\$392,516,963	\$296,689,279	\$95,827,684
25895	United States Liab Ins Co	\$959,662	0.0%	\$885,903,738	\$322,582,463	\$563,321,275
12472	LUBA Cas Ins Co	\$947,033	0.0%	\$212,356,325	\$135,069,982	\$77,286,343
11832	Health Care Industry Liab Recip Ins	\$937,276	0.0%	\$48,637,804	\$32,832,388	\$15,805,416
21296	Alterra Amer Ins Co	\$932,861	0.0%	\$246,466,179	\$81,018,812	\$165,447,367
22209	Freedom Specialty Ins Co	\$918,590	0.0%	\$36,632,357	\$24,288,119	\$12,344,238
10051	Lyndon Southern Ins Co	\$913,669	0.0%	\$95,133,751	\$54,004,784	\$41,128,967
19640	Columbia Natl Ins Co	\$910,887	0.0%	\$88,984,985	\$52,195,738	\$36,789,247
33650	Mendota Ins Co	\$900,493	0.0%	\$124,409,178	\$87,396,892	\$37,012,286
22683	Teachers Ins Co	\$894,077	0.0%	\$340,467,638	\$190,613,925	\$149,853,713
10701	Bridgefield Employers Ins Co	\$891,855	0.0%	\$122,119,855	\$4,442,571	\$117,677,284
10916	Suretec Ins Co	\$877,529	0.0%	\$175,585,676	\$93,701,407	\$81,884,269
44725	1st Auto & Cas Ins Co	\$873,669	0.0%	\$29,977,405	\$18,539,186	\$11,438,219
19631	American Road Ins Co	\$864,047	0.0%	\$556,896,758	\$310,308,085	\$246,588,673
24198	Peerless Ins Co	\$831,027	0.0%	\$12,800,884,898	\$9,741,967,989	\$3,058,916,909
28258	Continental Ind Co	\$824,874	0.0%	\$156,574,028	\$90,814,819	\$65,759,209
12300	American Contractors Ins Co RRG	\$822,429	0.0%	\$21,419,974	\$13,264,717	\$8,155,257
24066	American Fire & Cas Co	\$808,355	0.0%	\$40,756,664	\$1,729,802	\$39,026,862
33022	AXA Ins Co	\$803,671	0.0%	\$254,302,377	\$142,178,569	\$112,123,808
18430	Agricultural Workers Mut Auto Ins	\$802,507	0.0%	\$82,459,536	\$49,001,512	\$33,458,024
35696	Harleysville Preferred Ins Co	\$792,307	0.0%	\$141,077,344	\$98,092,570	\$42,984,774
24449	Regent Ins Co	\$787,397	0.0%	\$114,150,324	\$83,644,536	\$30,505,788
31003	Tri State Ins Co Of MN	\$763,155	0.0%	\$36,298,823	\$4,735,573	\$31,563,250
42552	Nova Cas Co	\$751,315	0.0%	\$99,107,769	\$7,363,045	\$91,744,724
26662	Milwaukee Cas Ins Co	\$742,641	0.0%	\$49,728,138	\$32,015,565	\$17,712,573
11242	Allied Eastern Ind Co	\$739,124	0.0%	\$61,922,465	\$47,202,592	\$14,719,873
31925	Falls Lake Natl Ins Co	\$736,846	0.0%	\$264,331,258	\$214,775,845	\$49,555,413
41459	Armed Forces Ins Exch	\$736,528	0.0%	\$136,390,541	\$65,653,912	\$70,736,629
10071	Encompass Ins Co Of Amer	\$734,797	0.0%	\$20,200,792	\$187,953	\$20,012,839
19704	American States Ins Co	\$729,952	0.0%	\$144,241,669	\$20,250,832	\$123,990,837
42897	American Serv Ins Co Inc	\$712,886	0.0%	\$129,174,083	\$97,451,636	\$31,722,447
18619	Platte River Ins Co	\$709,674	0.0%	\$124,541,152	\$83,001,429	\$41,539,723
30180	Assured Guar Corp	\$696,692	0.0%	\$2,539,243,653	\$1,453,105,381	\$1,086,138,272
29874	North Amer Specialty Ins Co	\$694,446	0.0%	\$547,290,661	\$163,069,988	\$384,220,673
43460	Aspen Amer Ins Co	\$692,370	0.0%	\$502,270,089	\$239,456,878	\$262,813,211
29980	First Colonial Ins Co	\$680,970	0.0%	\$353,346,666	\$194,353,992	\$158,992,674
25496	Torus Natl Ins Co	\$676,030	0.0%	\$180,283,671	\$103,097,832	\$77,185,839
29700	North Amer Elite Ins Co	\$672,318	0.0%	\$141,450,009	\$105,731,792	\$35,718,217
10817	Plateau Cas Ins Co	\$670,391	0.0%	\$39,503,952	\$19,044,219	\$20,459,733
10922	Insuremax Ins Co	\$663,702	0.0%	\$10,872,345	\$6,218,876	\$4,653,469
22039	General Reins Corp	\$656,091	0.0%	\$16,157,471,084	\$4,450,858,912	\$11,706,612,172
23647	Ironshore Ind Inc	\$646,701	0.0%	\$347,414,611	\$190,811,131	\$156,603,480

Property and Casualty (Cont.)

NAIC	Company Name	AR Premium	Market Share	Assets	Liabilities	Capital & Surplus
15911	American Mining Ins Co	\$642,983	0.0%	\$35,726,907	\$10,789,199	\$24,937,708
36307	Gray Ins Co	\$628,857	0.0%	\$292,565,948	\$181,103,541	\$111,462,407
41483	Farmington Cas Co	\$626,729	0.0%	\$1,009,570,522	\$721,916,377	\$287,654,145
27928	Amex Assur Co	\$626,648	0.0%	\$280,226,878	\$91,391,256	\$188,835,622
20362	Mitsui Sumitomo Ins Co of Amer	\$625,102	0.0%	\$900,647,369	\$568,355,191	\$332,292,178
35408	Imperium Ins Co	\$624,780	0.0%	\$420,748,332	\$247,003,537	\$173,744,795
36072	National Guardian RRG Inc	\$624,273	0.0%	\$15,840,140	\$9,354,636	\$6,485,504
10472	Capitol Ind Corp	\$618,015	0.0%	\$462,393,090	\$240,517,610	\$221,875,480
28460	Sentry Cas Co	\$617,711	0.0%	\$261,478,106	\$190,030,570	\$71,447,536
10346	Employers Preferred Ins Co	\$612,181	0.0%	\$752,283,280	\$491,142,989	\$261,140,291
20346	Pacific Ind Co	\$605,634	0.0%	\$6,822,352,880	\$3,900,139,320	\$2,922,213,560
19828	Argonaut Midwest Ins Co	\$605,024	0.0%	\$31,893,673	\$15,740,759	\$16,152,914
14494	Merchants Bonding Co a Mut	\$582,339	0.0%	\$141,935,907	\$50,108,936	\$91,826,971
44393	West Amer Ins Co	\$562,017	0.0%	\$77,516,503	\$32,348,948	\$45,167,555
12157	Companion Prop & Cas Ins Co	\$560,255	0.0%	\$1,046,157,998	\$828,119,607	\$218,038,391
38920	Kinsale Ins Co	\$559,660	0.0%	\$308,195,586	\$204,094,594	\$104,100,992
10103	American Agricultural Ins Co	\$551,682	0.0%	\$1,105,115,297	\$579,425,576	\$525,689,721
37220	Direct Ins Co	\$548,416	0.0%	\$73,593,252	\$48,834,210	\$24,759,042
16217	National Farmers Union Prop & Cas	\$541,979	0.0%	\$156,174,044	\$115,761,482	\$40,412,562
41998	American Southern Home Ins Co	\$541,605	0.0%	\$146,569,180	\$107,863,678	\$38,705,502
15954	AmTrust Ins Co of KS Inc	\$536,793	0.0%	\$50,125,469	\$30,821,785	\$19,303,684
42498	Cameron Natl Ins Co	\$534,922	0.0%	\$11,680,988	\$2,359,730	\$9,321,258
26565	Ohio Ind Co	\$530,061	0.0%	\$149,730,433	\$104,460,400	\$45,270,033
24031	Northland Cas Co	\$525,967	0.0%	\$110,471,579	\$75,062,427	\$35,409,152
21849	American Automobile Ins Co	\$515,627	0.0%	\$189,186,573	\$24,868,503	\$164,318,070
37540	Beazley Ins Co Inc	\$514,500	0.0%	\$266,409,572	\$144,152,131	\$122,257,441
10353	Ooida RRG Inc	\$509,134	0.0%	\$93,610,480	\$74,475,061	\$19,135,419
31348	Crum & Forster Ind Co	\$506,666	0.0%	\$45,475,291	\$30,666,851	\$14,808,440
10676	First Guard Ins Co	\$505,658	0.0%	\$21,271,317	\$1,222,489	\$20,048,828
11452	Hartford Steam Boil Inspec & Ins Co	\$496,710	0.0%	\$1,406,584,248	\$765,523,303	\$641,060,945
10936	Seneca Ins Co Inc	\$484,746	0.0%	\$193,914,742	\$59,767,946	\$134,146,796
13269	Zenith Ins Co	\$470,609	0.0%	\$1,834,094,724	\$1,269,559,962	\$564,534,762
37001	ATX Premier Insurance Company	\$456,850	0.0%	\$9,536,149	\$4,780,309	\$4,755,840
39942	American Natl Gen Ins Co	\$447,625	0.0%	\$101,710,382	\$40,888,901	\$60,821,481
25224	Great Divide Ins Co	\$440,704	0.0%	\$197,304,770	\$130,395,590	\$66,909,180
12750	Evergreen Natl Ind Co	\$440,081	0.0%	\$46,759,508	\$13,550,174	\$33,209,334
16624	Allied World Specialty Ins Co	\$439,678	0.0%	\$752,009,853	\$354,614,343	\$397,395,510
15580	Scottsdale Ind Co	\$437,192	0.0%	\$72,124,114	\$34,891,975	\$37,232,139
42048	Diamond State Ins Co	\$425,016	0.0%	\$123,613,652	\$63,369,954	\$60,243,698
10052	Chubb Natl Ins Co	\$418,029	0.0%	\$303,851,367	\$163,195,532	\$140,655,835
12754	Medicus Ins Co	\$417,242	0.0%	\$80,683,114	\$47,209,121	\$33,473,993
41424	Pennsylvania Manufacturers Ind Co	\$404,806	0.0%	\$191,170,186	\$118,970,898	\$72,199,288
10499	Corepointe Ins Co	\$396,156	0.0%	\$203,888,978	\$65,358,119	\$138,530,859
10216	American Contractors Ind Co	\$392,527	0.0%	\$312,092,071	\$225,889,692	\$86,202,379
45934	American Compensation Ins Co	\$392,316	0.0%	\$69,455,445	\$16,768,674	\$52,686,771
11573	Accident Ins Co Inc	\$392,158	0.0%	\$160,685,186	\$146,003,941	\$14,681,245
11231	Generali Us Branch	\$389,757	0.0%	\$62,869,985	\$35,487,524	\$27,382,461
19690	American Economy Ins Co	\$389,434	0.0%	\$73,789,878	\$7,081,901	\$66,707,977
12305	Accident Fund Natl Ins Co	\$388,867	0.0%	\$189,976,458	\$129,042,545	\$60,933,913
24791	St Paul Mercury Ins Co	\$388,080	0.0%	\$345,048,268	\$214,799,342	\$130,248,926
24732	General Ins Co Of Amer	\$385,897	0.0%	\$110,892,523	\$5,831,392	\$105,061,131
44121	Oms Natl Ins Co Rrg	\$381,186	0.0%	\$374,811,260	\$159,744,483	\$215,066,777
12572	Selective Ins Co Of Amer	\$381,088	0.0%	\$2,044,614,803	\$1,551,646,868	\$492,967,935
15865	NCMIC Ins Co	\$379,147	0.0%	\$654,904,780	\$402,844,072	\$252,060,708

Property and Casualty (Cont.)

NAIC	Company Name	AR Premium	Market Share	Assets	Liabilities	Capital & Surplus
23426	Oklahoma Surety Co	\$378,914	0.0%	\$27,303,657	\$10,686,819	\$16,616,838
21261	Electric Ins Co	\$375,687	0.0%	\$1,467,197,215	\$929,642,384	\$537,554,831
33898	Aegis Security Ins Co	\$373,008	0.0%	\$101,270,992	\$47,870,227	\$53,400,765
12866	T H E Ins Co	\$364,229	0.0%	\$195,849,647	\$131,546,889	\$64,302,758
11592	International Fidelity Ins Co	\$363,252	0.0%	\$210,141,849	\$126,234,737	\$83,907,112
14265	Indiana Lumbermens Mut Ins Co	\$359,784	0.0%	\$57,058,705	\$41,646,767	\$15,411,938
44105	Ophthalmic Mut Ins Co RRG	\$347,954	0.0%	\$268,509,733	\$85,653,202	\$182,856,531
31089	Repwest Ins Co	\$344,904	0.0%	\$306,370,490	\$150,535,062	\$155,835,428
11598	Applied Medico Legal Solutions RRG	\$337,899	0.0%	\$122,367,506	\$89,351,120	\$33,016,386
10815	Verlan Fire Ins Co MD	\$337,124	0.0%	\$25,407,221	\$33,334	\$25,373,887
36234	Preferred Professional Ins Co	\$336,421	0.0%	\$311,384,980	\$160,693,835	\$150,691,145
36650	Guarantee Co Of N Amer USA	\$330,060	0.0%	\$197,604,649	\$31,331,761	\$166,272,888
10200	Hiscox Ins Co Inc	\$327,528	0.0%	\$149,432,027	\$94,411,014	\$55,021,013
21865	Associated Ind Corp	\$327,425	0.0%	\$95,308,190	\$11,078,819	\$84,229,371
37923	Seaworthy Ins Co	\$319,219	0.0%	\$90,665,281	\$37,169,309	\$53,495,972
14460	Podiatry Ins Co Of Amer	\$310,780	0.0%	\$318,805,653	\$190,082,787	\$128,722,866
24139	Old Republic Gen Ins Corp	\$307,131	0.0%	\$1,925,685,166	\$1,431,597,331	\$494,087,835
10083	The Natl Catholic RRG Inc	\$303,904	0.0%	\$65,582,554	\$46,872,690	\$18,709,864
18279	Bankers Standard Ins Co	\$287,525	0.0%	\$434,558,457	\$293,292,895	\$141,265,562
10069	Housing Authority Prop A Mut Co	\$279,400	0.0%	\$164,675,070	\$48,587,555	\$116,087,515
18694	Great Midwest Ins Co	\$276,549	0.0%	\$191,783,805	\$88,826,058	\$102,957,747
18287	Assured Guar Municipal Corp	\$273,772	0.0%	\$5,961,221,953	\$3,694,371,523	\$2,266,850,430
36161	Travelers Prop Cas Ins Co	\$272,881	0.0%	\$233,327,383	\$162,415,930	\$70,911,453
10367	Avemco Ins Co	\$264,117	0.0%	\$109,546,041	\$32,958,468	\$76,587,573
32786	Progressive Specialty Ins Co	\$263,514	0.0%	\$880,174,181	\$566,029,103	\$314,145,078
44300	Tower Ins Co Of NY	\$261,832	0.0%	\$480,507,426	\$346,531,618	\$133,975,808
40444	Old Republic Surety Co	\$258,011	0.0%	\$112,764,176	\$56,699,433	\$56,064,743
32778	Washington Intl Ins Co	\$257,951	0.0%	\$104,291,998	\$29,797,036	\$74,494,962
22578	Horace Mann Ins Co	\$255,221	0.0%	\$444,297,573	\$258,018,910	\$186,278,663
34762	Sunz Ins Co	\$246,586	0.0%	\$68,320,274	\$55,862,273	\$12,458,001
19348	Capson Physicians Ins Co	\$241,424	0.0%	\$23,324,677	\$17,395,731	\$5,928,946
41238	Trans Pacific Ins Co	\$240,293	0.0%	\$68,121,710	\$18,473,895	\$49,647,815
13307	Lexon Ins Co	\$237,472	0.0%	\$161,709,369	\$109,195,915	\$52,513,454
19984	ACIG Ins Co	\$237,396	0.0%	\$412,616,200	\$294,875,570	\$117,740,630
44237	Mental Hlth RRG	\$232,527	0.0%	\$26,327,013	\$12,340,999	\$13,986,014
22551	Mitsui Sumitomo Ins USA Inc	\$230,920	0.0%	\$124,122,192	\$63,285,184	\$60,837,008
25976	Utica Mut Ins Co	\$223,754	0.0%	\$2,228,815,219	\$1,422,940,511	\$805,874,708
11206	Housing Enterprise Ins Co Inc	\$223,292	0.0%	\$66,328,875	\$35,287,892	\$31,040,983
21172	Vanliner Ins Co	\$222,419	0.0%	\$352,467,544	\$225,207,275	\$127,260,269
40266	ARCH Mortgage Ins Co	\$221,619	0.0%	\$399,604,496	\$247,122,247	\$152,482,249
35769	Lyndon Prop Ins Co	\$221,456	0.0%	\$362,039,947	\$216,902,429	\$145,137,518
20613	Sparta Ins Co	\$213,657	0.0%	\$377,113,669	\$251,472,184	\$125,641,485
27847	Insurance Co Of The West	\$212,725	0.0%	\$1,613,230,364	\$955,020,804	\$658,209,560
32506	Monroe Guar Ins Co	\$211,020	0.0%	\$48,137,043	\$(2,737,001)	\$50,874,044
30325	Zale Ind Co	\$210,296	0.0%	\$47,488,740	\$31,069,032	\$16,419,708
38300	Samsung Fire & Marine Ins Co Ltd	\$208,561	0.0%	\$213,638,597	\$158,421,894	\$55,216,703
42587	Depositors Ins Co	\$207,037	0.0%	\$282,630,457	\$245,855,145	\$36,775,312
12907	Southwest Physicians RRG Inc	\$205,788	0.0%	\$76,928,900	\$59,975,269	\$16,953,631
36897	Manufacturers Alliance Ins Co	\$203,385	0.0%	\$180,125,548	\$118,308,545	\$61,817,003
26042	Wausau Underwriters Ins Co	\$199,015	0.0%	\$96,128,883	\$31,589,655	\$64,539,228
40258	AIG Assur Co	\$192,056	0.0%	\$33,184,342	\$1,250,672	\$31,933,670
11050	Amerisure Partners Ins Co	\$188,643	0.0%	\$75,124,419	\$52,316,579	\$22,807,840
36927	Colony Specialty Ins Co	\$188,584	0.0%	\$65,324,235	\$45,335,316	\$19,988,919
18031	Topa Ins Co	\$185,921	0.0%	\$173,037,681	\$95,398,703	\$77,638,978

Property and Casualty (Cont.)

NAIC	Company Name	AR Premium	Market Share	Assets	Liabilities	Capital & Surplus
24724	First Natl Ins Co Of Amer	\$180,209	0.0%	\$55,202,966	\$888,612	\$54,314,354
19100	Amco Ins Co	\$178,080	0.0%	\$1,001,016,327	\$793,036,984	\$207,979,343
31470	Norguard Ins Co	\$176,774	0.0%	\$482,712,339	\$320,321,927	\$162,390,412
28886	Transguard Ins Co Of Amer Inc	\$172,989	0.0%	\$245,580,126	\$117,815,811	\$127,764,315
31887	Coface N Amer Ins Co	\$171,075	0.0%	\$155,207,668	\$83,263,222	\$71,944,446
19941	American Commerce Ins Co	\$169,996	0.0%	\$310,456,683	\$206,772,475	\$103,684,208
25984	Graphic Arts Mut Ins Co	\$166,536	0.0%	\$139,691,284	\$85,531,300	\$54,159,984
41394	Benchmark Ins Co	\$156,249	0.0%	\$172,943,327	\$115,566,928	\$57,376,399
11579	Old Glory Ins Co	\$155,222	0.0%	\$21,868,203	\$12,456,141	\$9,412,062
41491	Geico Cas Co	\$145,871	0.0%	\$2,347,313,597	\$1,367,422,011	\$979,891,586
23434	Middlesex Ins Co	\$143,548	0.0%	\$673,093,498	\$422,042,474	\$251,051,024
44130	Paratransit Ins Co Mut RRG	\$141,132	0.0%	\$23,869,759	\$11,518,364	\$12,351,395
38962	Genesis Ins Co	\$135,000	0.0%	\$194,254,720	\$61,582,134	\$132,672,586
36153	Aetna Ins Co of CT	\$122,242	0.0%	\$15,774,357	\$647,034	\$15,127,323
10724	Eastern Alliance Ins Co	\$120,713	0.0%	\$236,525,770	\$148,977,156	\$87,548,614
10020	United Educators Ins RRG Inc	\$118,689	0.0%	\$820,359,178	\$538,603,659	\$281,755,519
10084	Title Industry Assur Co RRG	\$118,311	0.0%	\$6,350,713	\$2,486,924	\$3,863,789
27740	North Pointe Ins Co	\$115,855	0.0%	\$89,259,264	\$63,625,217	\$25,634,047
19860	Argonaut Great Central Ins Co	\$114,022	0.0%	\$49,432,932	\$24,597,574	\$24,835,358
36463	Discover Prop & Cas Ins Co	\$110,274	0.0%	\$141,033,077	\$76,970,231	\$64,062,846
11595	Merchants Natl Bonding Inc	\$109,232	0.0%	\$20,004,756	\$8,482,662	\$11,522,094
13978	Florists Mut Ins Co	\$108,026	0.0%	\$147,341,093	\$113,291,218	\$34,049,875
34924	Dakota Truck Underwriters	\$103,551	0.0%	\$103,138,635	\$60,818,293	\$42,320,342
23353	Meridian Security Ins Co	\$95,967	0.0%	\$114,173,119	\$45,294,508	\$68,878,611
16810	American Mercury Ins Co	\$94,700	0.0%	\$378,484,273	\$204,094,970	\$174,389,303
12189	Oceanus Ins Co A RRG	\$94,006	0.0%	\$70,882,407	\$57,384,200	\$13,498,207
14990	Pennsylvania Natl Mut Cas Ins Co	\$93,683	0.0%	\$1,192,559,503	\$633,731,862	\$558,827,641
29157	United WI Ins Co	\$92,021	0.0%	\$283,777,468	\$194,944,801	\$88,832,667
10235	American Southern Ins Co	\$91,562	0.0%	\$108,543,072	\$69,531,526	\$39,011,546
10476	STICO Mut Ins Co RRG	\$87,928	0.0%	\$24,491,992	\$13,038,429	\$11,453,563
13613	College RRG Inc	\$87,211	0.0%	\$18,867,699	\$12,490,614	\$6,377,085
25887	United States Fidelity & Guar Co	\$85,987	0.0%	\$4,677,408,630	\$2,211,176,642	\$2,466,231,988
10794	Companion Commercial Ins Co	\$84,446	0.0%	\$22,091,473	\$2,926,928	\$19,164,545
24678	Arrowood Ind Co	\$82,375	0.0%	\$1,473,661,724	\$1,224,614,182	\$249,047,542
10222	PACO Assur Co Inc	\$80,860	0.0%	\$73,451,732	\$37,766,612	\$35,685,120
10054	Securian Cas Co	\$78,715	0.0%	\$193,267,327	\$90,674,813	\$102,592,514
42390	Amguard Ins Co	\$70,713	0.0%	\$419,651,716	\$309,692,970	\$109,958,746
14026	Sunland RRG Inc	\$69,600	0.0%	\$4,891,369	\$3,662,561	\$1,228,808
10243	National Continental Ins Co	\$69,400	0.0%	\$162,570,317	\$114,775,825	\$47,794,492
13559	Municipal Assur Cor	\$68,715	0.0%	\$1,519,753,850	\$908,219,359	\$611,534,491
35181	Executive Risk Ind Inc	\$68,401	0.0%	\$3,024,828,557	\$1,766,809,138	\$1,258,019,419
13126	Midwest Builders Cas Mut Co	\$67,254	0.0%	\$78,444,240	\$35,598,639	\$42,845,601
12190	American Pet Ins Co	\$67,233	0.0%	\$38,917,013	\$15,255,824	\$23,661,189
10340	Stonington Ins Co	\$65,657	0.0%	\$156,696,337	\$115,555,456	\$41,140,881
31968	Merastar Ins Co	\$65,021	0.0%	\$26,473,979	\$16,963,022	\$9,510,957
12718	Developers Surety & Ind Co	\$64,071	0.0%	\$134,652,911	\$52,409,721	\$82,243,190
11134	Rural Trust Ins Co	\$62,337	0.0%	\$12,772,116	\$1,342,882	\$11,429,234
10212	Allmerica Fin Alliance Ins Co	\$61,921	0.0%	\$19,422,774	\$15,961	\$19,406,813
26797	Housing Authority RRG Inc	\$61,014	0.0%	\$313,220,865	\$116,497,632	\$196,723,233
35157	Fair Amer Ins & Reins Co	\$57,810	0.0%	\$256,920,013	\$13,863,065	\$243,056,948
37710	First Amer Prop & Cas Ins Co	\$57,695	0.0%	\$99,324,652	\$52,785,718	\$46,538,934
12209	Restoration RRG Inc	\$55,294	0.0%	\$62,835,287	\$43,058,128	\$19,777,159
22730	Allied World Ins Co	\$53,861	0.0%	\$1,727,155,179	\$634,229,637	\$1,092,925,542
26581	Independence Amer Ins Co	\$52,962	0.0%	\$102,871,957	\$42,704,320	\$60,167,637

Property and Casualty (Cont.)

NAIC	Company Name	AR Premium	Market Share	Assets	Liabilities	Capital & Surplus
11710	Allied Professionals Ins Co RRG	\$52,592	0.0%	\$39,856,929	\$25,546,015	\$14,310,914
14190	OBI Natl Ins Co	\$51,190	0.0%	\$13,060,195	\$25,786	\$13,034,409
37060	Old United Cas Co	\$48,970	0.0%	\$656,647,557	\$321,274,351	\$335,373,206
30120	Znat Ins Co	\$48,955	0.0%	\$67,866,169	\$40,961,485	\$26,904,684
11153	Titan Ins Co Inc RRG	\$48,833	0.0%	\$46,595,585	\$11,619,309	\$34,976,276
12297	Petroleum Cas Co	\$48,503	0.0%	\$30,775,360	\$8,224,033	\$22,551,327
37206	Contractors Bonding & Ins Co	\$47,864	0.0%	\$198,299,261	\$86,127,650	\$112,171,611
20370	AXIS Reins Co	\$46,198	0.0%	\$2,872,772,623	\$2,007,887,467	\$864,885,156
18708	Ambac Assur Corp	\$45,000	0.0%	\$4,464,307,527	\$4,364,307,527	\$100,000,000
13285	Allegheny Cas Co	\$44,834	0.0%	\$37,646,377	\$14,611,762	\$23,034,615
13177	ARCOA RRG Inc	\$43,764	0.0%	\$11,849,450	\$7,674,201	\$4,175,249
10671	The Gray Cas & Surety Co	\$42,528	0.0%	\$16,697,307	\$2,091,259	\$14,606,048
14788	NGM Ins Co	\$39,459	0.0%	\$2,314,400,775	\$1,346,179,032	\$968,221,743
10113	Terra Ins Co RRG	\$39,224	0.0%	\$28,295,396	\$9,912,978	\$18,382,418
12294	Southwest Marine & Gen Ins Co	\$39,122	0.0%	\$126,809,799	\$69,357,524	\$57,452,275
15679	National Fire & Ind Exch	\$38,637	0.0%	\$11,625,937	\$5,414,979	\$6,210,958
39969	American Safety Cas Ins Co	\$35,516	0.0%	\$185,477,639	\$36,854,209	\$148,623,430
24503	Catlin Ind Co	\$35,015	0.0%	\$105,288,909	\$28,392,016	\$76,896,893
14249	Founders Ins Co	\$34,552	0.0%	\$152,718,344	\$83,865,657	\$68,852,687
13200	Universal Surety Of Amer	\$32,807	0.0%	\$15,850,789	\$85,465	\$15,765,324
10754	Spirit Mountain Ins Co RRG Inc	\$32,432	0.0%	\$6,456,732	\$3,122,075	\$3,334,657
11600	Frank Winston Crum Ins Co	\$32,375	0.0%	\$49,615,339	\$34,975,473	\$14,639,866
25422	Atradius Trade Credit Ins Co	\$32,316	0.0%	\$116,266,336	\$52,034,652	\$64,231,684
12172	Claim Professionals Liab ins Co RRG	\$31,778	0.0%	\$3,768,761	\$1,650,038	\$2,118,723
11967	General Star Natl Ins Co	\$30,901	0.0%	\$244,126,289	\$59,837,728	\$184,288,561
10232	American Assoc Of Othodontists RRG	\$30,260	0.0%	\$42,532,870	\$29,579,703	\$12,953,167
13722	Knightbrook Ins Co	\$29,932	0.0%	\$213,511,965	\$155,777,003	\$57,734,962
15474	National Lloyds Ins Co	\$29,139	0.0%	\$215,733,840	\$102,710,359	\$113,023,481
35963	AF&L Ins Co	\$26,557	0.0%	\$155,381,087	\$155,379,471	\$1,616
22950	Acstar Ins Co	\$25,555	0.0%	\$60,506,600	\$32,455,122	\$28,051,478
11123	Safety First Ins Co	\$25,452	0.0%	\$18,167,064	\$3,523,050	\$14,644,014
10758	Colonial Surety Co	\$24,393	0.0%	\$50,422,375	\$21,683,875	\$28,738,500
22608	National Specialty Ins Co	\$24,142	0.0%	\$71,118,825	\$27,861,044	\$43,257,781
11267	Security Amer RRG Inc	\$22,535	0.0%	\$5,686,360	\$3,056,811	\$2,629,549
10801	Fortress Ins Co	\$22,198	0.0%	\$135,776,730	\$74,645,049	\$61,131,681
25186	Emc Prop & Cas Ins Co	\$20,994	0.0%	\$159,754,326	\$81,285,708	\$78,468,618
36765	Gulf Guar Ins Co	\$20,949	0.0%	\$4,596,646	\$821,678	\$3,774,968
13720	CrossFit RRG Inc	\$20,585	0.0%	\$4,747,679	\$2,334,991	\$2,412,688
14366	NASW RRG Inc	\$19,026	0.0%	\$2,963,914	\$1,658,110	\$1,305,804
10234	National Serv Contract Ins Co RRG	\$17,423	0.0%	\$12,850,946	\$1,869,257	\$10,981,689
40517	Advantage Workers Comp Ins Co	\$17,254	0.0%	\$107,859,928	\$57,057,333	\$50,802,595
13695	National Mortgage Ins Corp	\$16,737	0.0%	\$261,907,635	\$38,789,337	\$223,118,298
13792	New Home Warranty Ins Co a RRG	\$16,681	0.0%	\$16,010,214	\$10,298,100	\$5,712,114
20702	Ace Fire Underwriters Ins Co	\$16,360	0.0%	\$100,108,832	\$27,083,861	\$73,024,971
29823	Genworth Residential Mortgage Ins Co	\$15,566	0.0%	\$219,958,849	\$134,016,768	\$85,942,081
11825	Care RRG Inc	\$15,263	0.0%	\$18,787,801	\$14,003,976	\$4,783,825
10164	Cpa Mut Ins Co Of Amer RRG	\$14,292	0.0%	\$22,001,693	\$13,088,318	\$8,913,375
13580	ARISE Boiler Inspection & Ins Co RRG	\$14,187	0.0%	\$3,315,855	\$813,915	\$2,501,940
10003	Excess Share Ins Corp	\$14,050	0.0%	\$50,687,707	\$29,841,701	\$20,846,006
16667	United Guar Residential Ins Co of NC	\$12,925	0.0%	\$461,106,721	\$28,823,223	\$432,283,498
40169	Metropolitan Cas Ins Co	\$12,578	0.0%	\$201,426,791	\$148,545,086	\$52,881,705
12260	Campmed Cas & Ind Co Inc	\$11,978	0.0%	\$20,335,197	\$278,192	\$20,057,005
37850	Pacific Specialty Ins Co	\$11,888	0.0%	\$304,598,033	\$170,785,060	\$133,812,973

Property and Casualty (Cont.)

NAIC	Company Name	AR Premium	Market Share	Assets	Liabilities	Capital & Surplus
11197	National Independent Truckers IC RRG	\$11,721	0.0%	\$11,690,256	\$5,200,018	\$6,490,238
11835	PartnerRe Amer Ins Co	\$11,420	0.0%	\$298,448,429	\$164,857,867	\$133,590,562
42579	Allied Prop & Cas Ins Co	\$10,617	0.0%	\$357,918,666	\$298,877,589	\$59,041,077
39527	Heritage Ind Co	\$10,335	0.0%	\$151,512,292	\$99,876,889	\$51,635,403
13242	Titan Ind Co	\$9,391	0.0%	\$250,913,009	\$78,954,872	\$171,958,137
24775	St Paul Guardian Ins Co	\$9,267	0.0%	\$76,477,907	\$50,351,643	\$26,126,264
32450	ALPS Prop & Cas Ins Co	\$9,196	0.0%	\$100,731,326	\$64,584,144	\$36,147,182
24104	Ohio Farmers Ins Co	\$7,762	0.0%	\$2,595,105,375	\$692,655,841	\$1,902,449,534
22713	Insurance Co of N Amer	\$7,704	0.0%	\$869,901,272	\$644,669,188	\$225,232,084
39322	General Security Natl Ins Co	\$7,313	0.0%	\$302,649,348	\$198,794,004	\$103,855,344
43273	Insurors Ind Co	\$6,706	0.0%	\$23,140,113	\$10,715,402	\$12,424,711
31232	Work First Cas Co	\$6,348	0.0%	\$40,226,794	\$31,102,709	\$9,124,085
29033	Atain Ins Co	\$6,307	0.0%	\$72,628,687	\$26,886,010	\$45,742,677
36340	Camico Mut Ins Co	\$5,908	0.0%	\$91,796,324	\$52,604,407	\$39,191,917
11030	Memco Ind Co	\$5,403	0.0%	\$328,122,745	\$200,644,385	\$127,478,360
36560	Service Ins Co	\$5,258	0.0%	\$50,049,280	\$15,376,484	\$34,672,796
27081	Bond Safeguard Ins Co	\$5,125	0.0%	\$77,556,952	\$41,992,151	\$35,564,801
30279	Boston Ind Co Inc	\$5,004	0.0%	\$7,462,443	\$2,691,737	\$4,770,706
33723	Great Amer Spirit Ins Co	\$4,885	0.0%	\$20,110,696	\$27,475	\$20,083,221
26905	Century Natl Ins Co	\$4,735	0.0%	\$593,149,605	\$208,134,945	\$385,014,660
21075	Financial Amer Prop & Cas Ins Co	\$4,459	0.0%	\$12,866,644	\$2,802,251	\$10,064,393
20621	OneBeacon Amer Ins Co	\$4,446	0.0%	\$25,860,274	\$2,594,195	\$23,266,079
22276	Berkshire Hathaway Specialty Ins Co	\$3,147	0.0%	\$3,521,608,096	\$287,464,815	\$3,234,143,281
40940	Western Pacific Mut Ins Co RRG	\$2,905	0.0%	\$142,722,255	\$33,097,844	\$109,624,411
13677	Affiliates Ins Recip a RRG	\$2,616	0.0%	\$5,071,531	\$1,856,129	\$3,215,402
21903	Procentury Ins Co	\$2,364	0.0%	\$199,246,253	\$150,536,772	\$48,709,481
35505	Rockwood Cas Ins Co	\$2,225	0.0%	\$237,323,761	\$157,491,895	\$79,831,866
20796	21st Century Premier Ins Co	\$1,872	0.0%	\$275,700,295	\$5,056,839	\$270,643,456
28860	RLI Ind Co	\$1,750	0.0%	\$44,159,474	\$462,308	\$43,697,166
33383	First Professionals Ins Co	\$1,705	0.0%	\$402,702,519	\$214,218,040	\$188,484,479
22810	Chicago Ins Co	\$1,332	0.0%	\$112,747,991	\$58,518,422	\$54,229,569
21970	Bedivere Ins Co	\$1,233	0.0%	\$295,214,862	\$165,193,114	\$130,021,748
26999	United Guar Mortgage Ind Co	\$1,201	0.0%	\$284,068,307	\$168,928,149	\$115,140,158
11114	St Charles Ins Co RRG	\$1,200	0.0%	\$13,395,722	\$2,564,701	\$10,831,021
29530	AXA Art Ins Corp	\$891	0.0%	\$44,433,171	\$9,895,350	\$34,537,821
14702	Eastguard Ins Co	\$889	0.0%	\$92,661,846	\$57,253,923	\$35,407,923
14402	Bearing Midwest Cas Co	\$837	0.0%	\$5,849,667	\$239,665	\$5,610,002
25933	Universal Surety Co	\$731	0.0%	\$189,003,245	\$54,272,931	\$134,730,314
31453	Financial Pacific Ins Co	\$595	0.0%	\$219,959,042	\$133,621,870	\$86,337,172
26220	Yosemite Ins Co	\$401	0.0%	\$210,061,763	\$102,366,188	\$107,695,575
20648	Employers Fire Ins Co	\$379	0.0%	\$13,007,802	\$1,937,342	\$11,070,460
13986	Frankenmuth Mut Ins Co	\$370	0.0%	\$1,107,445,218	\$643,676,109	\$463,769,109
31534	Citizens Ins Co Of Amer	\$288	0.0%	\$1,501,022,384	\$867,377,511	\$633,644,873
26869	Silver Oak Cas Inc	\$260	0.0%	\$225,355,142	\$131,483,293	\$93,871,849
12171	AmeriGuard RRG Inc	\$166	0.0%	\$11,745,546	\$4,492,709	\$7,252,837
25879	Fidelity & Guar Ins Underwriters Inc	\$166	0.0%	\$165,821,338	\$64,965,599	\$100,855,739
17965	American Sentinel Ins Co	\$157	0.0%	\$30,164,540	\$14,507,736	\$15,656,804
12934	Academic Medical Professionals Ins E	\$142	0.0%	\$3,074,578	\$896,915	\$2,177,663
11145	Golden Ins Co RRG	\$140	0.0%	\$9,063,881	\$5,734,290	\$3,329,591
37621	Toyota Motor Ins Co	\$124	0.0%	\$452,976,245	\$241,613,350	\$211,362,895
25151	State Farm Gen Ins Co	\$100	0.0%	\$6,714,926,061	\$2,893,722,354	\$3,821,203,707
29513	The Bar Plan Mut Ins Co	\$100	0.0%	\$47,876,252	\$29,992,168	\$17,884,084
13019	Eastern Advantage Assur Co	\$69	0.0%	\$35,912,351	\$23,377,209	\$12,535,142

Property and Casualty (Cont.)

NAIC	Company Name	AR Premium	Market Share	Assets	Liabilities	Capital & Surplus
18740	MGIC Ind Corp	\$42	0.0%	\$498,953,867	\$29,764,838	\$469,189,029
34738	Arag Ins Co	\$15	0.0%	\$71,624,504	\$17,686,229	\$53,938,275
	TOTAL	\$4,454,229,495	100.0%			

Title

NAIC	Company Name	AR Premium	Market Share	Assets	Liabilities	Capital & Surplus
50814	First Amer Title Ins Co	\$10,138,154	21.3%	\$2,187,243,933	\$1,208,517,105	\$978,726,828
50121	Stewart Title Guar Co	\$9,941,910	20.9%	\$1,082,474,389	\$556,708,298	\$525,766,091
50229	Chicago Title Ins Co	\$8,485,109	17.9%	\$1,905,830,081	\$934,754,377	\$971,075,704
50520	Old Republic Natl Title Ins Co	\$8,020,604	16.9%	\$953,146,310	\$517,077,193	\$436,069,117
51586	Fidelity Natl Title Ins Co	\$7,335,418	15.4%	\$1,267,783,803	\$790,931,355	\$476,852,448
12522	Agents Natl Title Ins Co	\$1,299,447	2.7%	\$7,522,083	\$4,495,533	\$3,026,550
50784	Security Title Guarantee Corp Baltim	\$1,088,706	2.3%	\$14,350,796	\$11,217,410	\$3,133,386
50083	Commonwealth Land Title Ins Co	\$506,085	1.1%	\$581,846,381	\$336,738,790	\$245,107,591
51152	WFG Natl Title Ins Co	\$338,658	0.7%	\$69,751,034	\$50,836,094	\$18,914,940
51020	National Title Ins Of NY Inc	\$207,549	0.4%	\$119,526,096	\$68,141,455	\$51,384,641
51411	American Guar Title Ins Co	\$125,745	0.3%	\$33,979,525	\$10,629,317	\$23,350,208
51632	EnTitle Ins Co	\$3,147	0.0%	\$16,140,763	\$6,090,001	\$10,050,762
50050	Westcor Land Title Ins Co	\$500	0.0%	\$82,805,443	\$59,028,325	\$23,777,118
50792	Southern Title Ins Corp	\$421	0.0%	\$8,733,305	\$28,722,713	\$(19,989,408)
	TOTAL	\$47,491,453	100.0%			

For more information, visit:

www.insurance.arkansas.gov

Asa Hutchinson
Governor



Allen Kerr
Commissioner