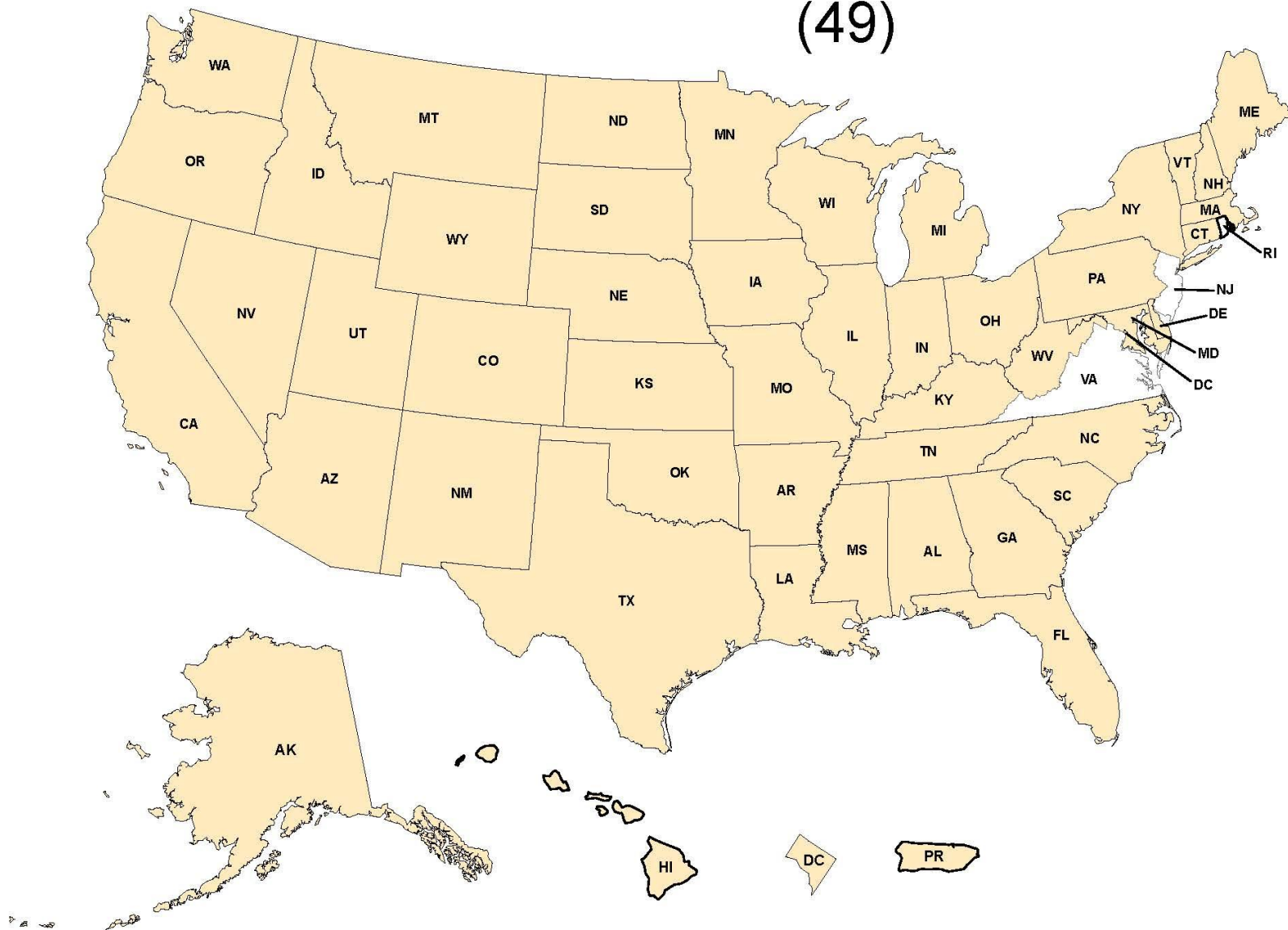


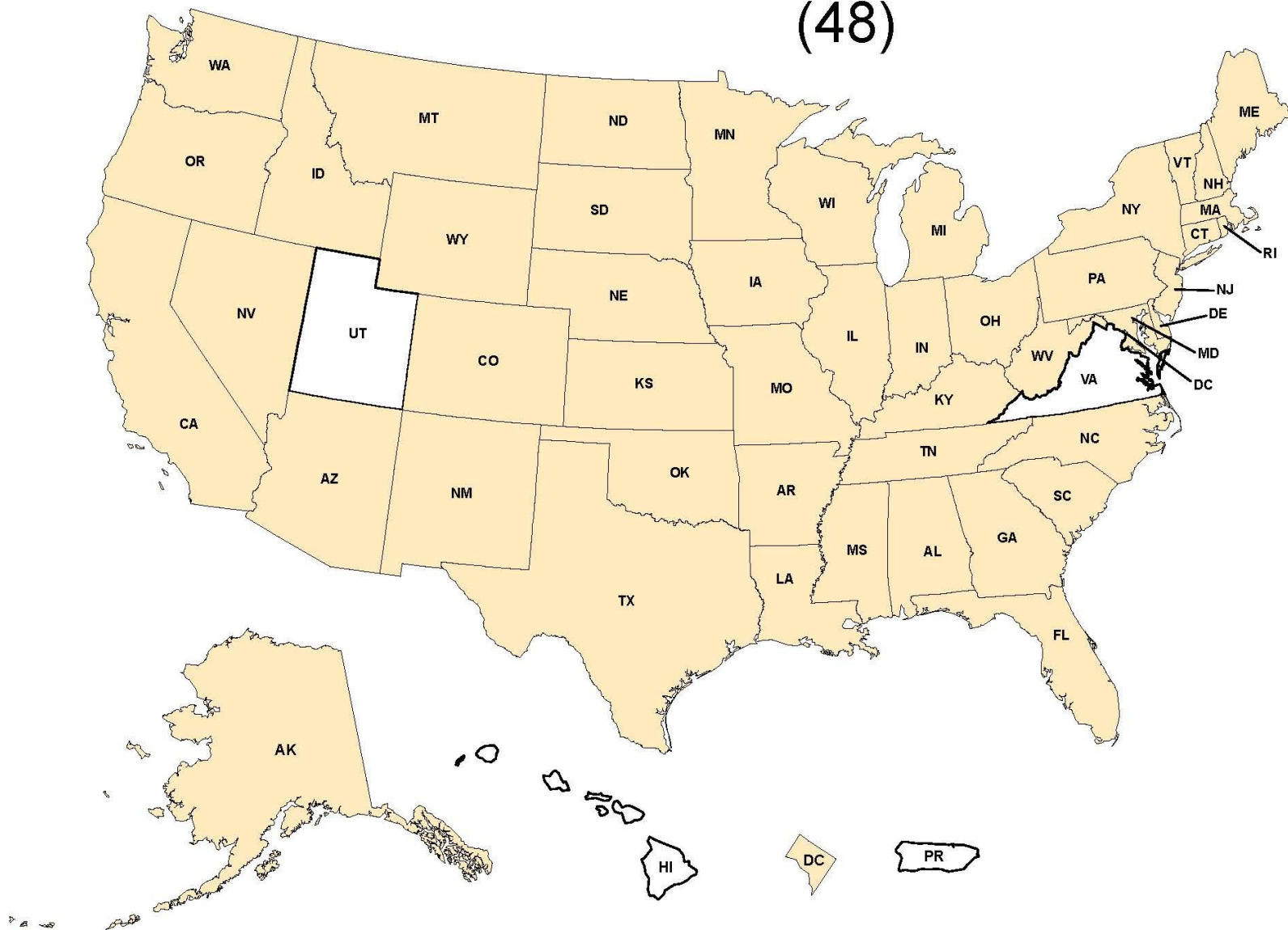
State Transportation Department Highway Responsibility (52)



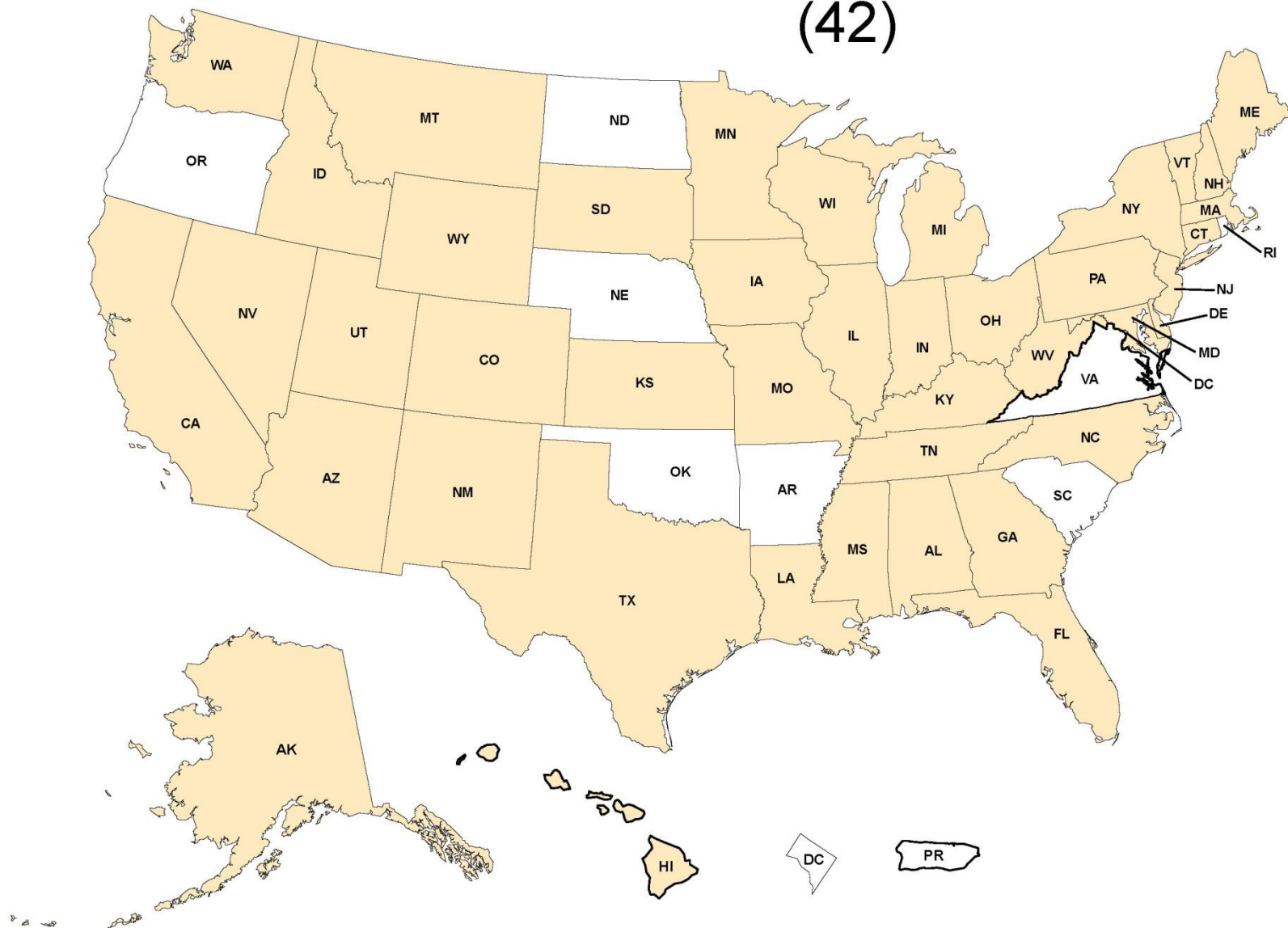
State Transportation Department Transit Responsibility (49)



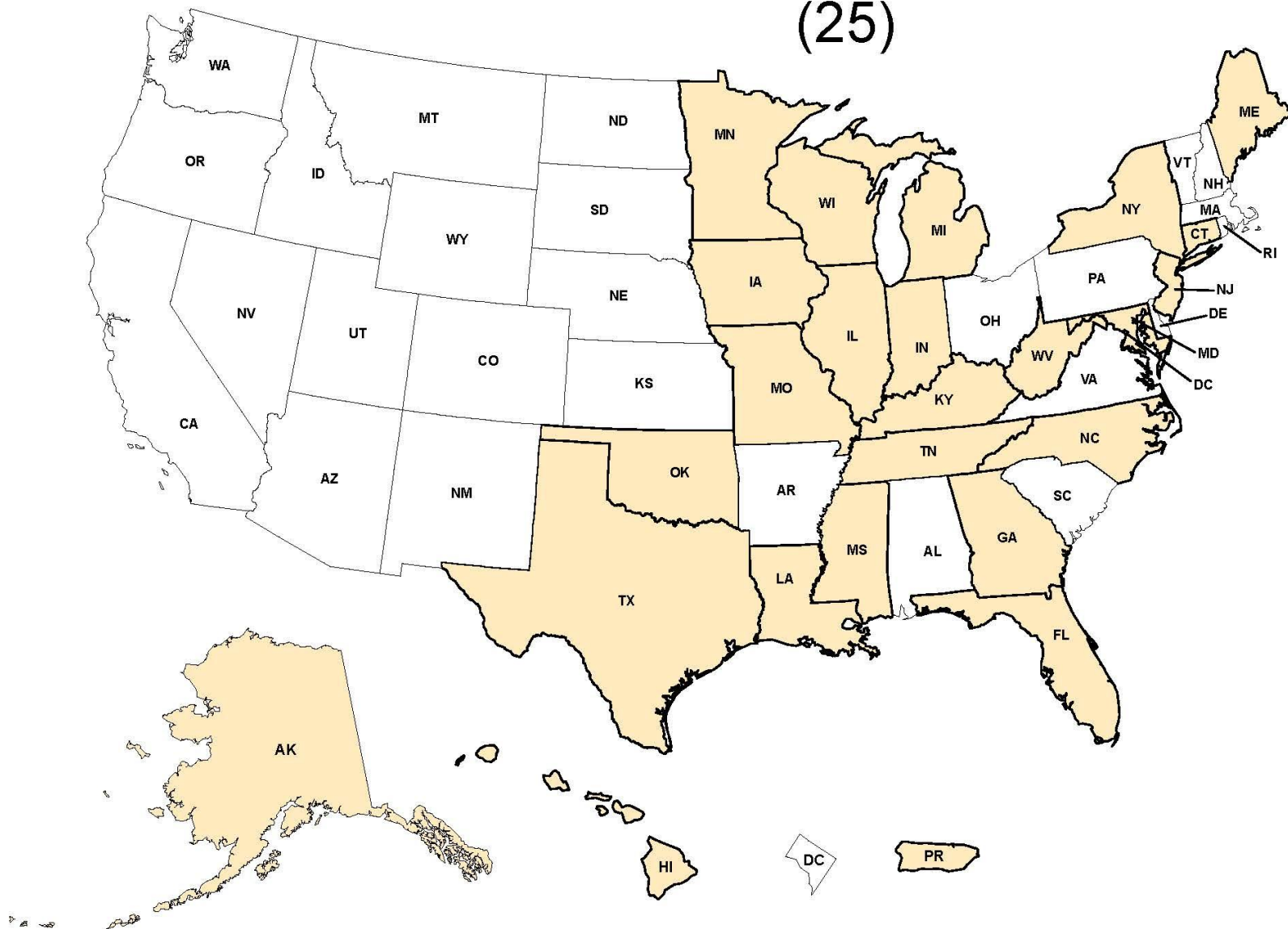
State Transportation Department Rail Responsibility (48)



State Transportation Department Air Responsibility (42)



(25)



State	Highway	Transit	Rail	Air	Water
Alabama	X	X	X	X	
Alaska	X	X	X	X	X
Arizona	X	X	X	X	
Arkansas	X	X	X		
California	X	X	X	X	
Colorado	X	X	X	X	
Connecticut	X	X	X	X	X
Delaware	X	X	X	X	X
District of Columbia	X	X	X		
Florida	X	X	X	X	X
Georgia	X	X	X	X	X
Hawaii	X	X		X	X
Idaho	X	X	X	X	
Illinois	X	X	X	X	X
Indiana	X	X	X	X	X
Iowa	X	X	X	X	X
Kansas	X	X	X	X	
Kentucky	X	X	X	X	X
Louisiana	X	X	X	X	X
Maine	X	X	X	X	X
Maryland	X	X	X	X	X
Massachusetts	X	X	X	X	
Michigan	X	X	X	X	X
Minnesota	X	X	X	X	X
Mississippi	X	X	X	X	X
Missouri	X	X	X	X	X
Montana	X	X	X	X	
Nebraska	X	X	X		
Nevada	X	X	X	X	
New Hampshire	X	X	X	X	
New Jersey	X		X	X	X
New Mexico	X	X	X	X	
New York	X	X	X	X	X
North Carolina	X	X	X	X	X
North Dakota	X	X	X		
Ohio	X	X	X	X	
Oklahoma	X	X	X		X
Oregon	X	X	X		
Pennsylvania	X	X	X	X	
Puerto Rico	X	X			X
Rhode Island	X		X		
South Carolina	X	X	X		
South Dakota	X	X	X	X	
Tennessee	X	X	X	X	X
Texas	X	X	X	X	X
Utah	X	X		X	
Vermont	X	X	X	X	
Virginia	X				
Washington	X	X	X	X	
West Virginia	X	X	X	X	X
Wisconsin	X	X	X	X	X
Wyoming	X	X	X	X	

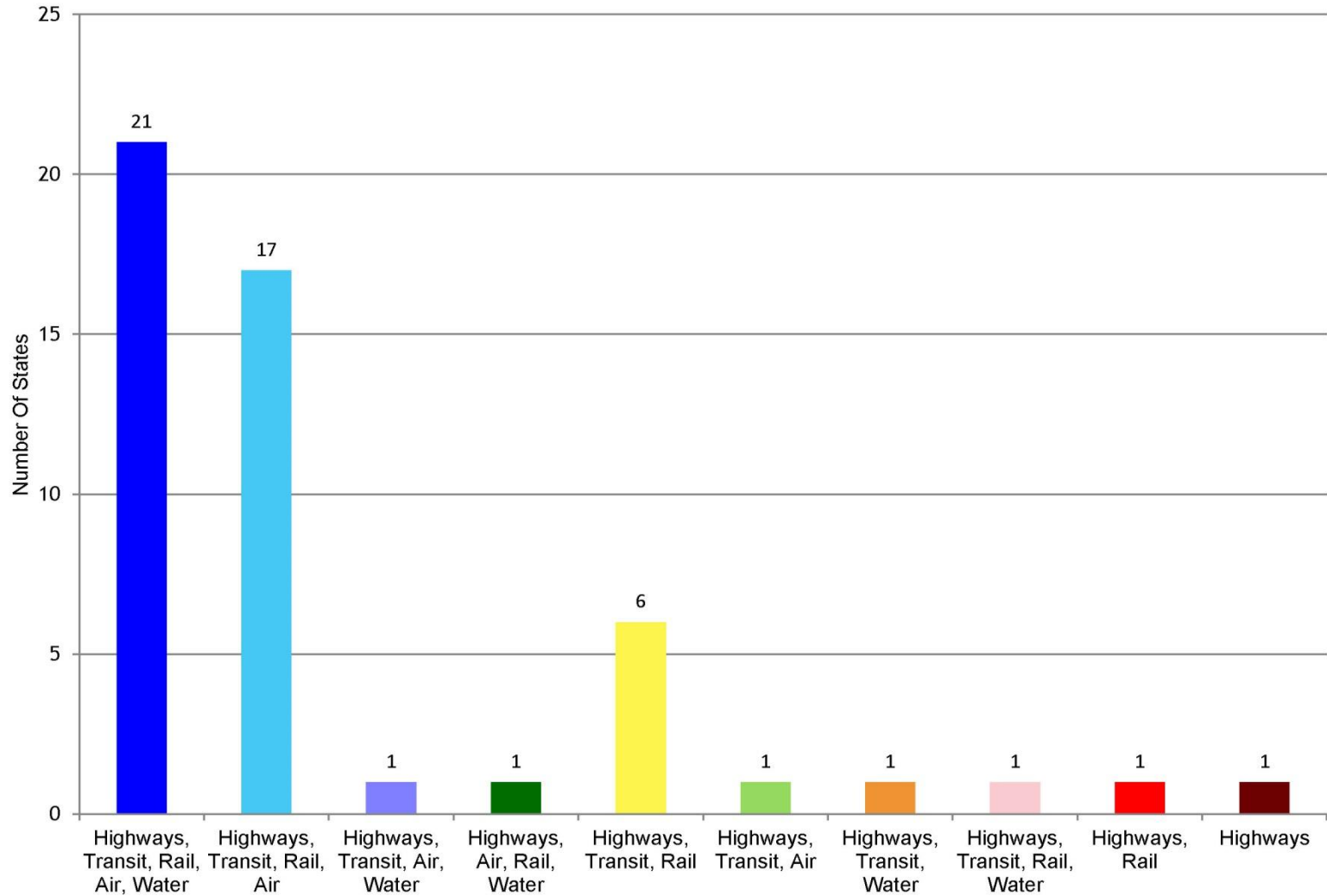
State Transportation Department Modal Responsibility

Highways	52
Transit	49
Rail	48
Air	42
Water	25

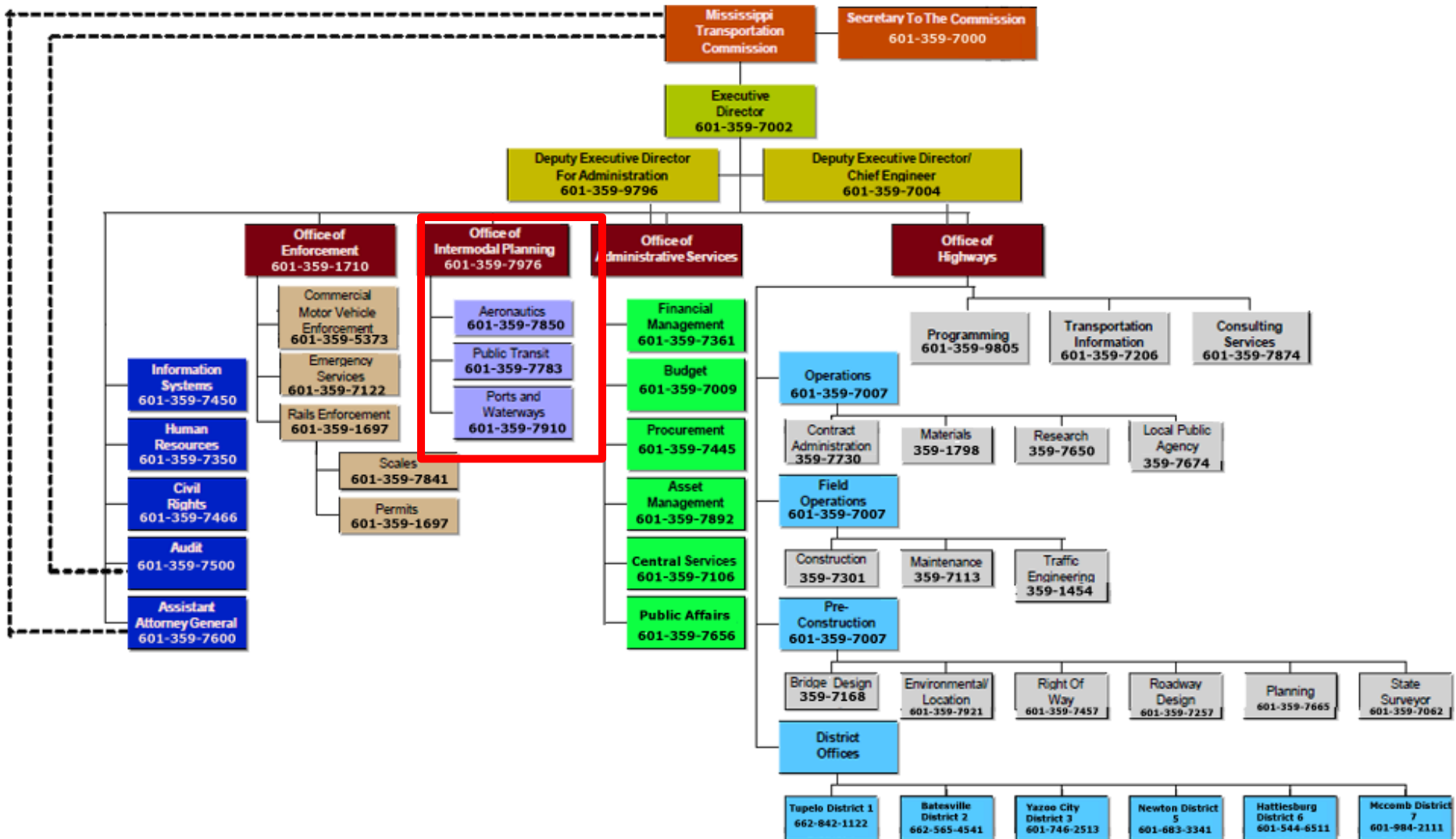
[illegible]

- | | |
|---|--|
|  | Highways, Transit, Rail, Air, Water (21) |
|  | Highways, Transit, Rail, Air (18) |
|  | Highways, Transit, Air, Water (1) |
|  | Highways, Rail, Air, Water (1) |
|  | Highways, Transit, Air (1) |
|  | Highways, Transit, Rail (6) |
|  | Highways, Transit, Water (1) |
|  | Highways, Transit, Rail, Water (1) |
|  | Highways, Rail (1) |
|  | Highways (1) |

State Transportation Department Modal Responsibilities

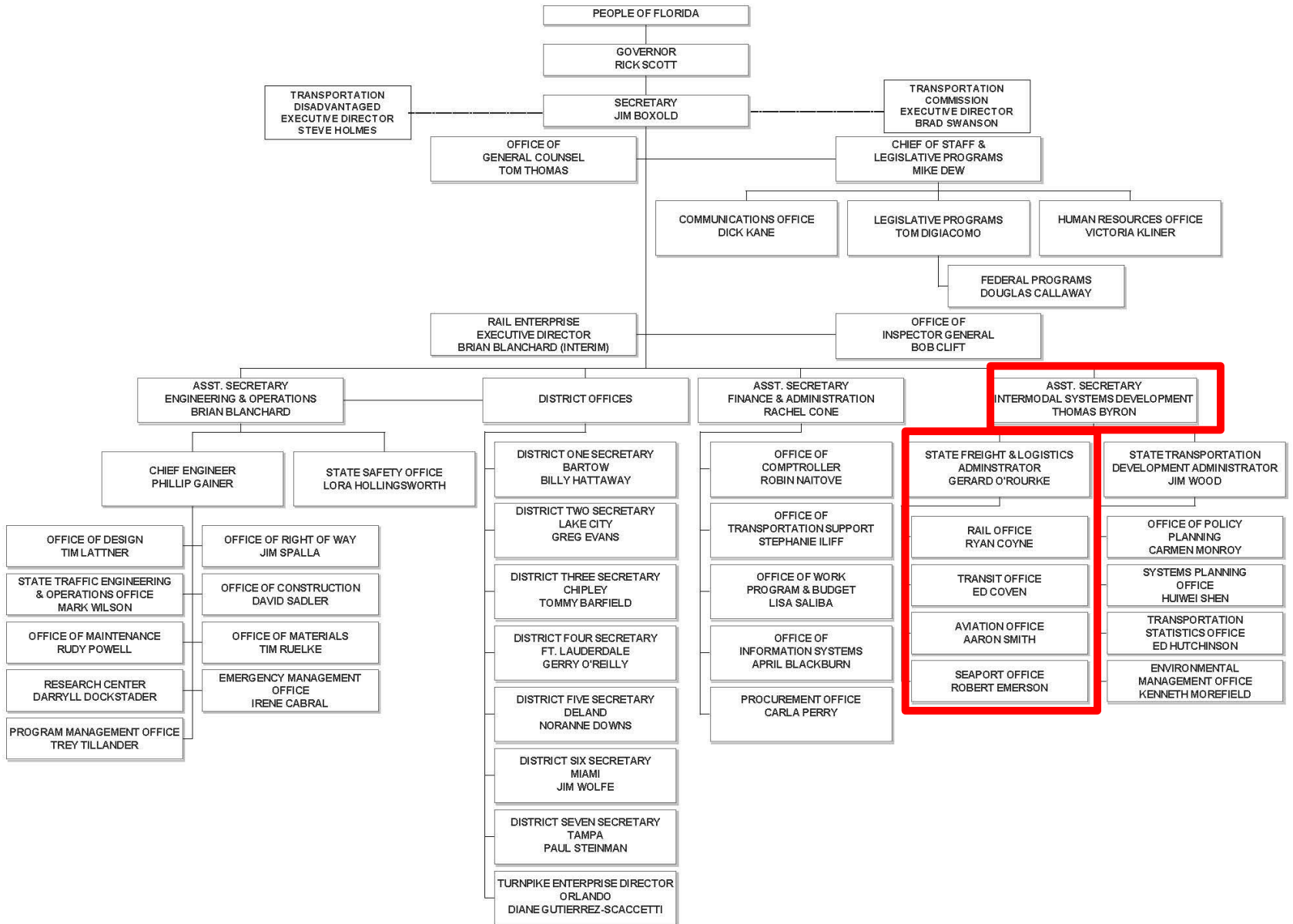


Mississippi DOT Organizational Chart

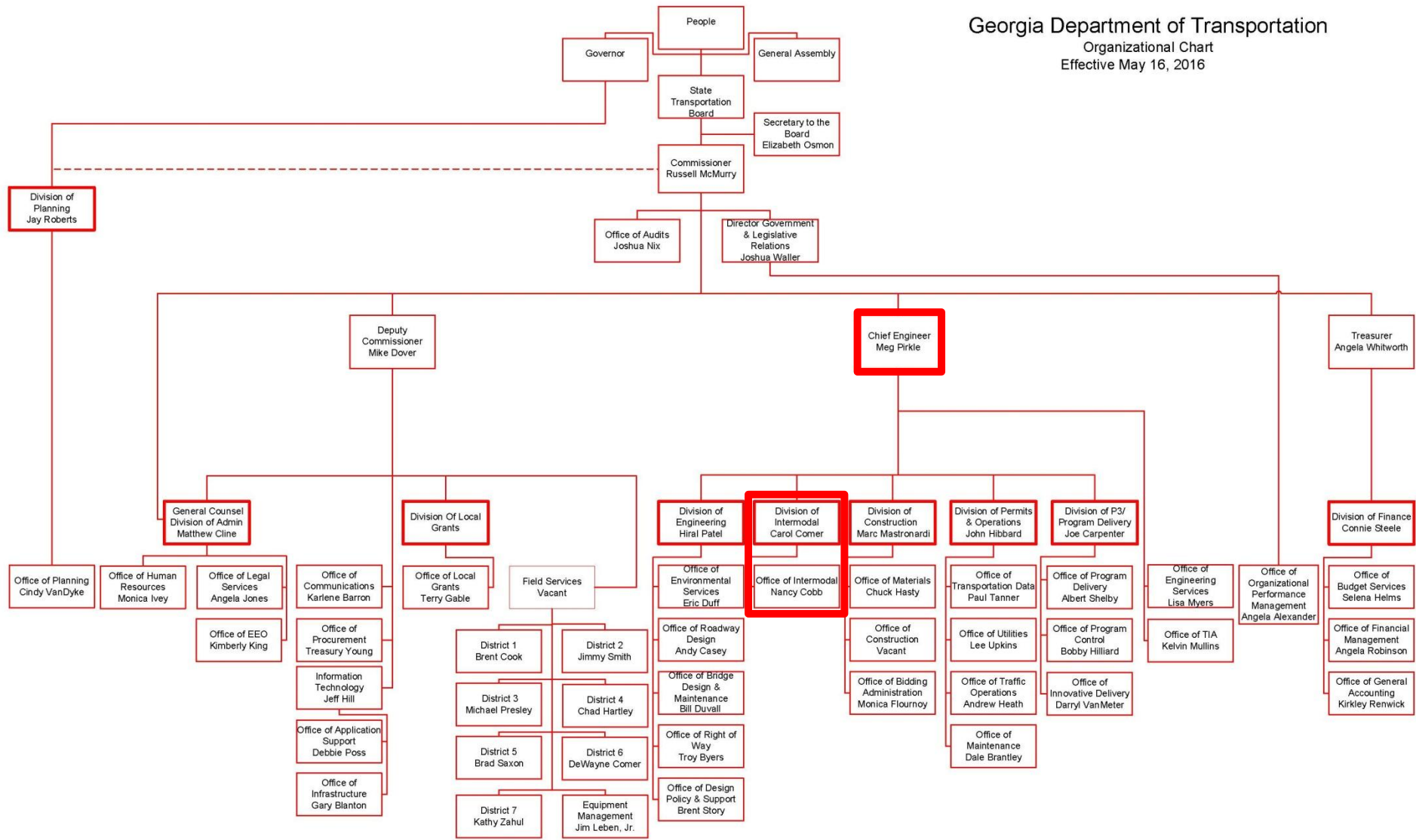


FLORIDA DEPARTMENT OF TRANSPORTATION ORGANIZATION CHART

MAY 2016

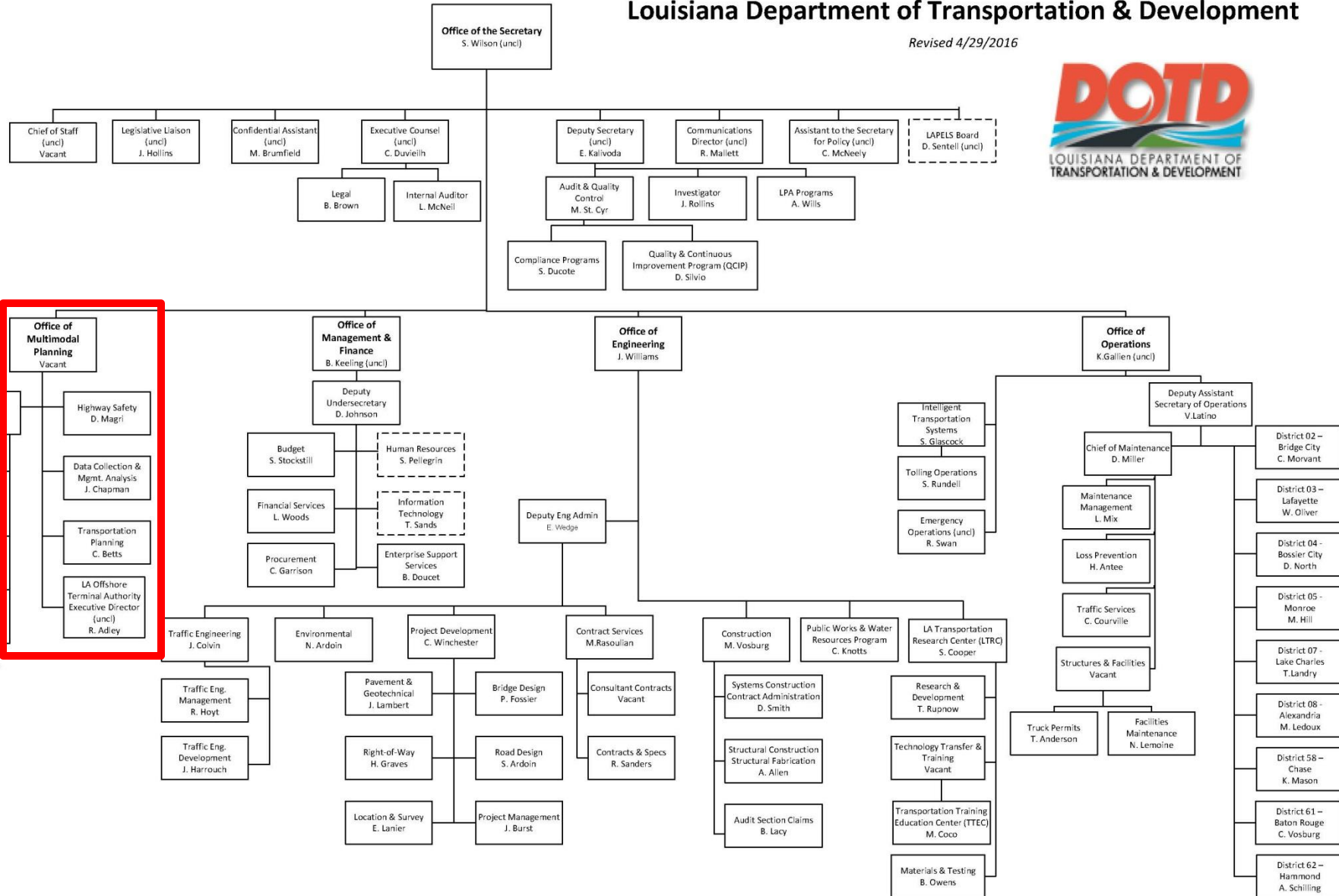


Georgia Department of Transportation
Organizational Chart
Effective May 16, 2016



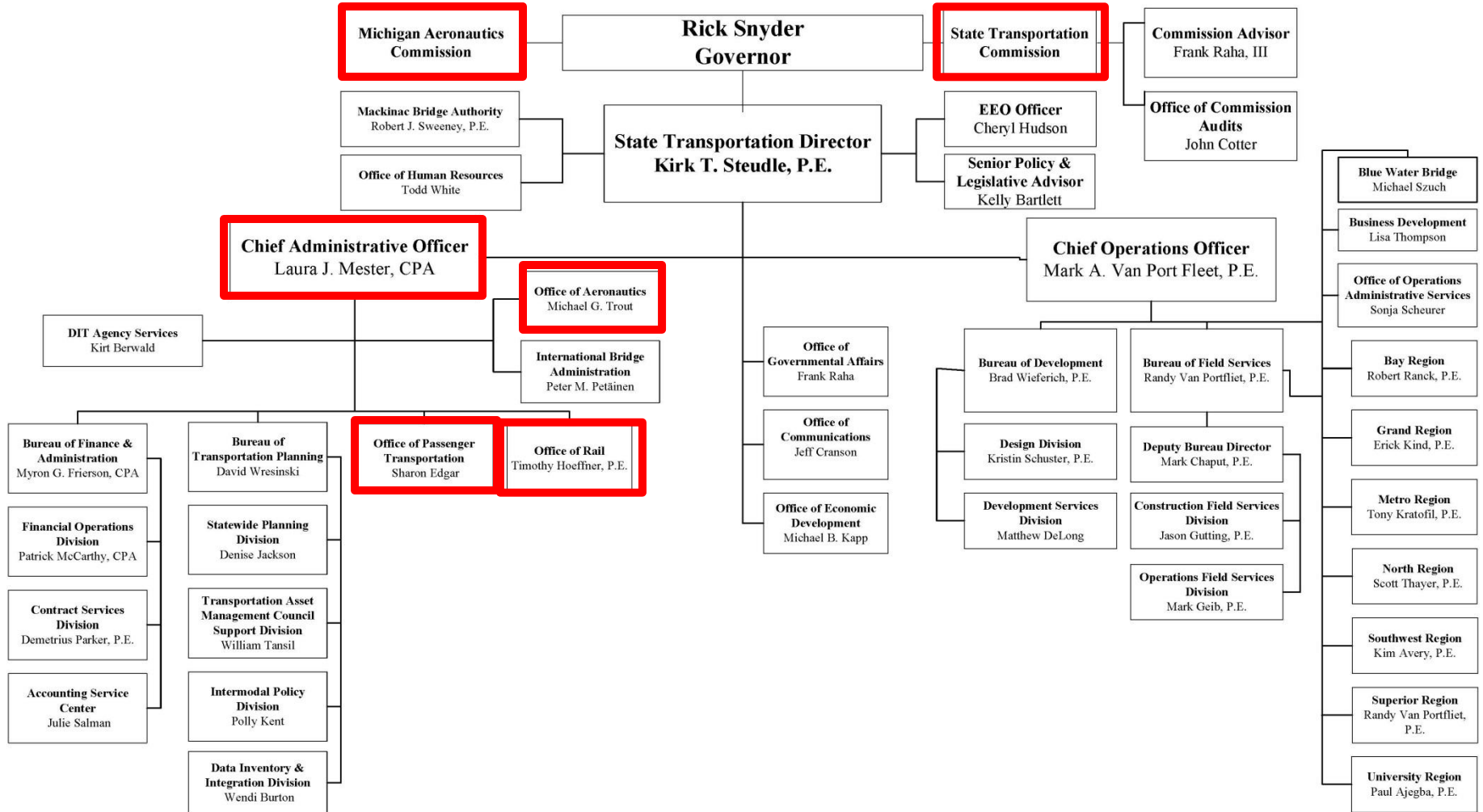
Louisiana Department of Transportation & Development

Revised 4/29/2016



Michigan Department of Transportation

June 2016



Governor
Terry E. Branstad

Transportation Commissioners
Leonard Boswell, Chair
Daniel Huber, Vice chair
Loree R. Miles
John Putney
Amy Reasner
David Rose
Charese Yanney

Director
Paul Trombino III

General Counsel
David Gorham

Information Technology Division
Annette Dunn

Highway Division
Mitch Dillavou

Motor Vehicle Division
Mark Lowe

Planning, Programming and Modal Division
Stuart Anderson

Operations and Finance Division
Lee Wilkinson

Performance and Technology Division
John Selmer

District 1 Office, Ames
Scott Dockstader

District 2 Office, Mason City
E. Jon Ranney

District 3 Office, Sioux City
Tony Lazarowicz

District 4 Office, Atlantic
Troy Jerman

District 5 Office, Fairfield
Jim Armstrong

District 6 Office, Cedar Rapids
Jim Schnoebelen

Project Delivery Bureau
Charlie Purcell

Office of Contracts
Wes Musgrove

Office of Construction and Materials
Greg Mulder

Office of Local Systems
VACANT

Systems Operations Bureau
Sandra Larson

Office of Maintenance
Bob Younie

Office of Traffic and Safety
Steve Gent

Traffic Operations
Scott Marler

Office of Location and Environment
VACANT

Office of Right of Way
Marty Sankey

Office of Design
Mike Kennerly

Office of Bridges and Structures
Norm McDonald

Office of Highway Support
Deb Shafer

Office of Motor Vehicle Support
Corey Lorenz

Office of Administration, Planning and Modal Support
Mitch Carlyle

Bureau of Enterprise Services
Jeff Sundholm

Office of Customer Support
Bill George

Office of Systems Support
Roger Parker

Office of Network and Radio Support
Dave Anderson

Office of Driver Services
Melissa Spiegel

Office of Vehicle and Motor Carrier Services
Tina Hargis

Office of Motor Vehicle Enforcement
David Lorenzen

Bureau of Investigation & Identity Protection
Paul Steier

Office of Aviation
Michelle McEnany

Office of Program Management
VACANT

Office of Public Transit
Michelle McEnany

Office of Rail Transportation
Tammy Nicholson

Office of Systems Planning
Craig Markley

Office of Employee Services
Todd Sadler

Office of Finance
Cheryl Williams

Office of Policy and Legislative Services
Dan Franklin

Office of Support Services
Mike Harvey

Organizational Improvement

Office of Strategic Communications
Andrea Henry

Office of Research and Analytics
Peggi Knight

New Jersey Department of Transportation Organization Chart



June 2016
Mission Statement: "Improving Lives by Improving Transportation."
View our latest organization chart online at:
www.njdot.nj.gov/about



Acting Commissioner
Richard T. Hammer

**Chairman of the Board
NJ Transit**
Richard T. Hammer

The Commissioner serves in an ex-officio capacity for the following agencies:
New Jersey Transit Corporation (Chair)
New Jersey Transportation Trust Fund Authority (Chair)
Metropolitan Regional Planning Commission
New Jersey Motor Vehicle Commission
New Jersey Redevelopment Authority
New Jersey Turnpike Authority
North Jersey Transportation Planning Authority
South Jersey Transportation Planning Authority
South Jersey Transportation Planning Commission

The Commissioner is also
Chairman of the Board, New Jersey Transit Corporation
Chairman of the Board, New Jersey Transportation Trust Fund Authority
Chairman of the Board, New Jersey Turnpike Authority
Chairman of the Board, South Jersey Transportation Authority

Chief of Staff
TBA

Deputy Commissioner
Joseph D. Bertoni

Director Smart Growth
Milton Weeks

Inspector General
Johnna Bates Jones

**Assistant Commissioner
Administration**
Joanna M. Victor

Chief Financial Officer
Gary J. Burke

**Assistant Commissioner
Transportation Systems
Management**
C. Wilbur Kingland

**Division Director
Government and
Community Relations**
John Case

Legal Services
Philip Caputo

Director Human Resources
Michael Shapiro

Director Support Services
J. Dobby MacDonnell

**Director Civil Rights and Affirmative Action
EEO Officer**
Linda Legge

Facilities Planning & Engineering & Construction
J. R. O'Neil

Contract Compliance
J. R. O'Neil

Employee Relations
D. Barlett

Employee Safety
A. Polignone

Employee Management
L. A. Walder

Small & Disadvantaged Business Enterprise Program
T. C. Davis

**ADA & Title VI
Non-Discrimination**
A. Davis

Dissemination, Externations, and Appointments
C. J. J. J.

Director Budget
D. M. M. M.

Director Accounting and Auditing
Barbara DeLuca

Director Procurement
Anthony Gervasio

Director Information Technology
Gary Zayas

Budget Analysis
R. C. C. C.

Accounting Operations
T. G. G. G.

Professional Services Procurement
K. A. A. A.

IT Security and Services
D. D. D. D.

Program Analysis
G. B. B. B.

Agreement Accounting
A. R. R. R.

Construction Services Procurement
K. C. C. C.

Applications Development and System Support
M. C. C. C.

Auditing
C. B. B. B.

Equipment, Materials & Supplies
D. K. K. K.

Information Management & Technology Planning
C. D. D. D.

Director Traffic Operations
S. M. M. M.

Traffic Operations North
M. J. J. J.

Traffic Operations South
W. P. P. P.

Network Incident Management
M. M. M. M.

Director Mobility & Systems Engineering
W. M. M. M.

Asst. Division Director Community & Government Relations
Scott Stephens

Director Legislative, Administrative & Regulatory Affairs
Milton Weeks

Legislative Analysis
S. J. J. J.

Administrative & Regulatory Affairs
P. J. J. J.

Director Communications
Stephen Shapiro

**Assistant Commissioner
Capital Investment
Planning & Grant
Administration**
David Kuhn

**Assistant Commissioner
Capital Program
Management**
(State Transportation Program)
B. D. D. D.

**Assistant Commissioner
Operations**
(Operations Management)
Andrew Turnard

Director Multimodal Services
N. M. M. M.

Multimodal Grants & Programs & Div. of Accessibility
A. P. P. P.

Maritime Resources
T. B. B. B.

Freight Planning & Services
P. T. T. T.

Fixed Subsidy Oversight
T. B. B. B.

Director Local Aid & Economic Development
Michael Russo

Director Strategic Planning
Andrew Davis

Local Aid Economic Development & Project Support
T. B. B. B.

**Local Aid District 1
Mt. Arlington**
J. J. J. J.

**Local Aid District 2
Newark**
T. B. B. B.

**Local Aid District 3
Orlando**
D. C. C. C.

**Local Aid District 4
Cherry Hill**
S. M. M. M.

Strategic Planning
T. B. B. B.

Systems Planning
T. B. B. B.

Research
C. C. C. C.

Commute Mobility
D. D. D. D.

Transportation Sustainable Communities
T. B. B. B.

Director Environmental Resources
Ellen Green

Environmental Program Resources & Project Support
T. B. B. B.

Transportation Data & Safety
J. A. A. A.

Director Capital Investment Planning & Development
Thomas Wozniak

Capital Program Development
J. V. V. V.

Program Coordination
E. P. P. P.

Director Highway & Traffic Design
Robert Marshall

Roadway Design Group 1
D. B. B. B.

Roadway Design Group 2
M. M. M. M.

Traffic Engineering
C. B. B. B.

Regional Design/CAO & Survey Services
T. B. B. B.

Director Right of Way & Access Management
V. A. A. A.

Northern District
M. C. C. C.

South District
M. P. P. P.

Major Access, Right of Way & Access Engineering
B. C. C. C.

Technical Support
D. K. K. K.

Closing
D. M. M. M.

Director Capital Program Support
(State Transportation Program)
Richard G. J. J.

Design Standards
P. S. S. S.

Landscaping, Architecture & Env. Solutions
J. S. S. S.

Program Management
P. S. S. S.

Director Project Management
D. H. H. H.

Manager Group A
L. B. B. B.

Program Manager
W. B. B. B.

Program Manager Group D
T. S. S. S.

Manager Group D
A. S. S. S.

Director Bridge Engineering & Infrastructure
A. M. M. M.

Structural Design & Geotechnical Engineering
J. C. C. C.

Structural Evaluation & Bridge Management
G. R. R. R.

Structural & Railroad Eng. Services
E. G. G. G.

Permit & Drainage Management
S. Q. Q. Q.

Director Construction Services
(Construction Management)
S. M. M. M.

Materials
E. S. S. S.

Construction Management
A. B. B. B.

Reg. Const. Engineering North
C. P. P. P.

Reg. Const. Engineering South
R. P. P. P.

Reg. Const. Engineering South
D. S. S. S.

Division Director Operations North
Christopher Tettini

Asst. Division Director North
T. B. B. B.

Division Director Operations Central
Michael Davis

Asst. Division Director Central
C. F. F. F.

Division Director Operations South
William Day

Asst. Division Director South
T. B. B. B.

Asst. Division Director South
T. B. B. B.

Deputy Executive Director Operations
Raymond Kaufman

Equipment Engineering & Operations
J. S. S. S.

Roadway & Bridge Administration
J. L. L. L.

Operations Training Unit
T. S. S. S.

Office of Emergency Management (OEM)
R. B. B. B.

Director Permits, Electrical & Climate
C. R. R. R.

Electrical Operations North-Central-South
D. B. B. B.

Permits North-Central-South
P. M. M. M.

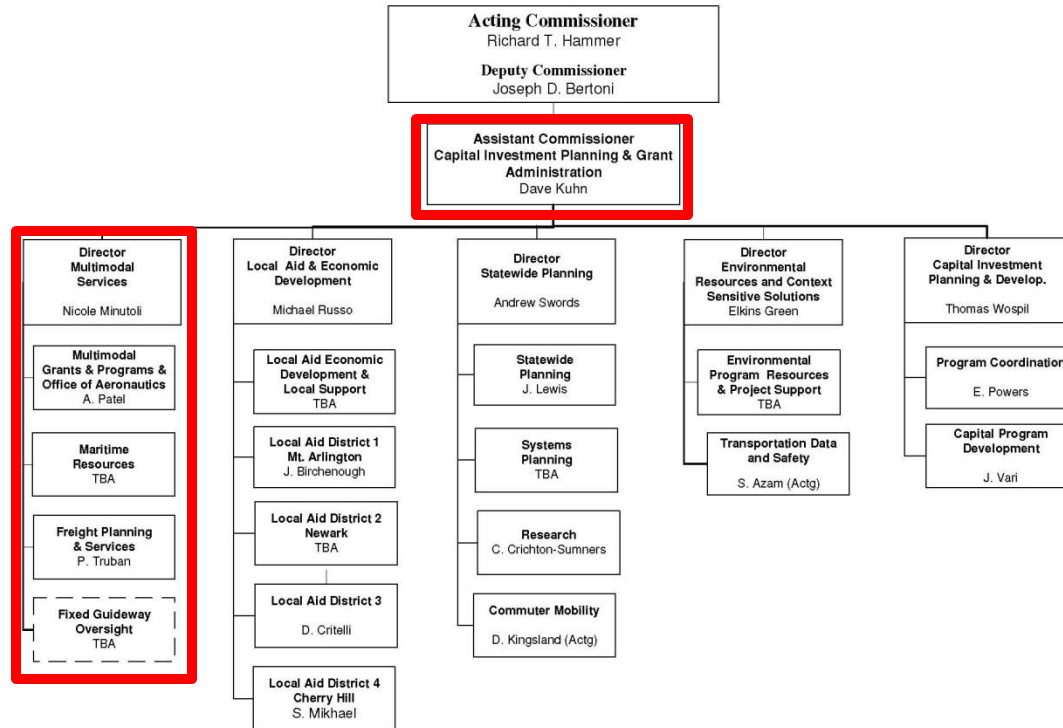
Produced by The Division of Information Technology
New Jersey Department of Transportation
1050 Parkway Avenue
Trenton, NJ 08620-0000



New Jersey Department of Transportation Organization Chart

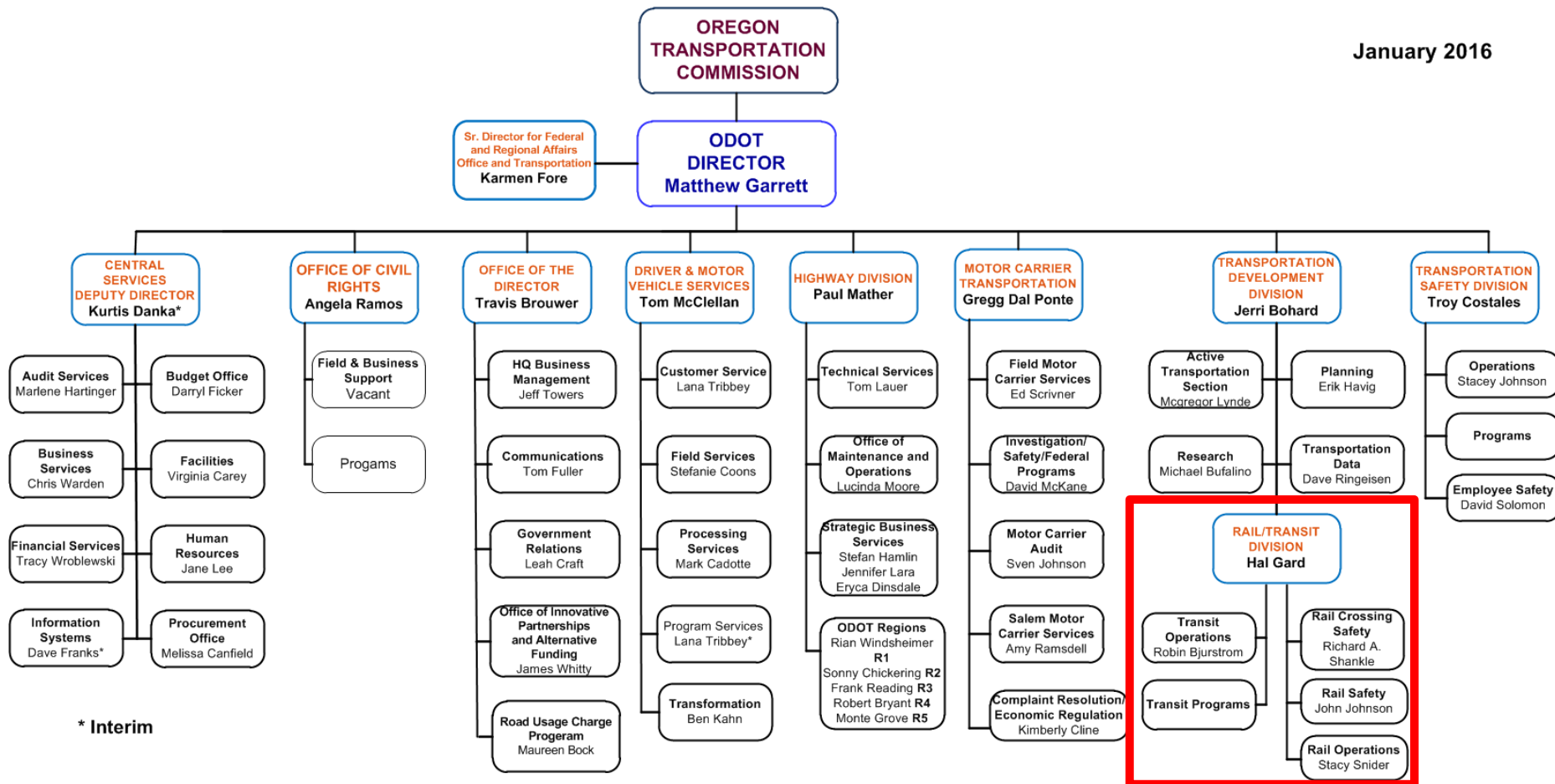
June 2016

Capital Investment Planning & Grant Administration



Oregon Department of Transportation

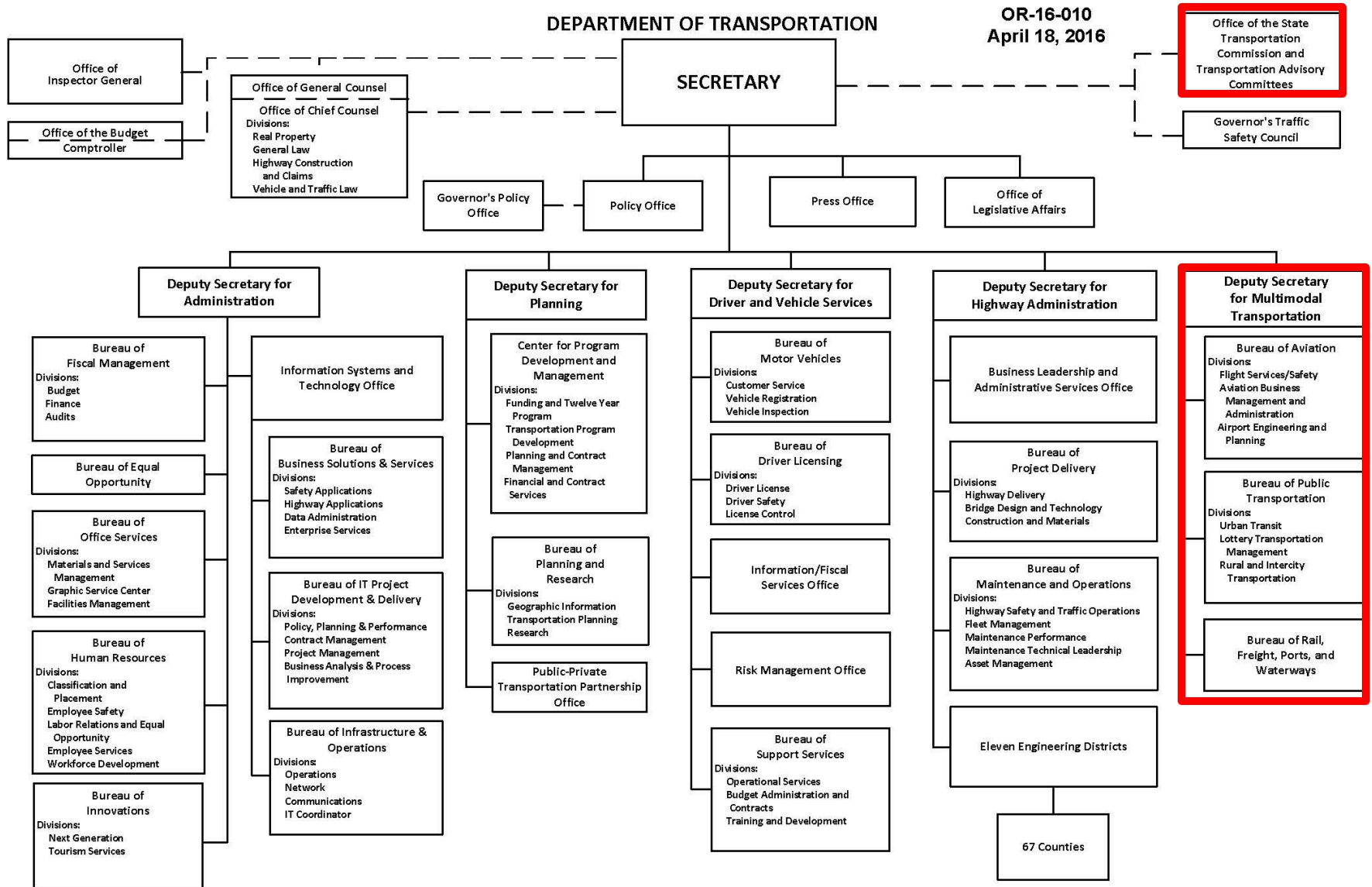
January 2016



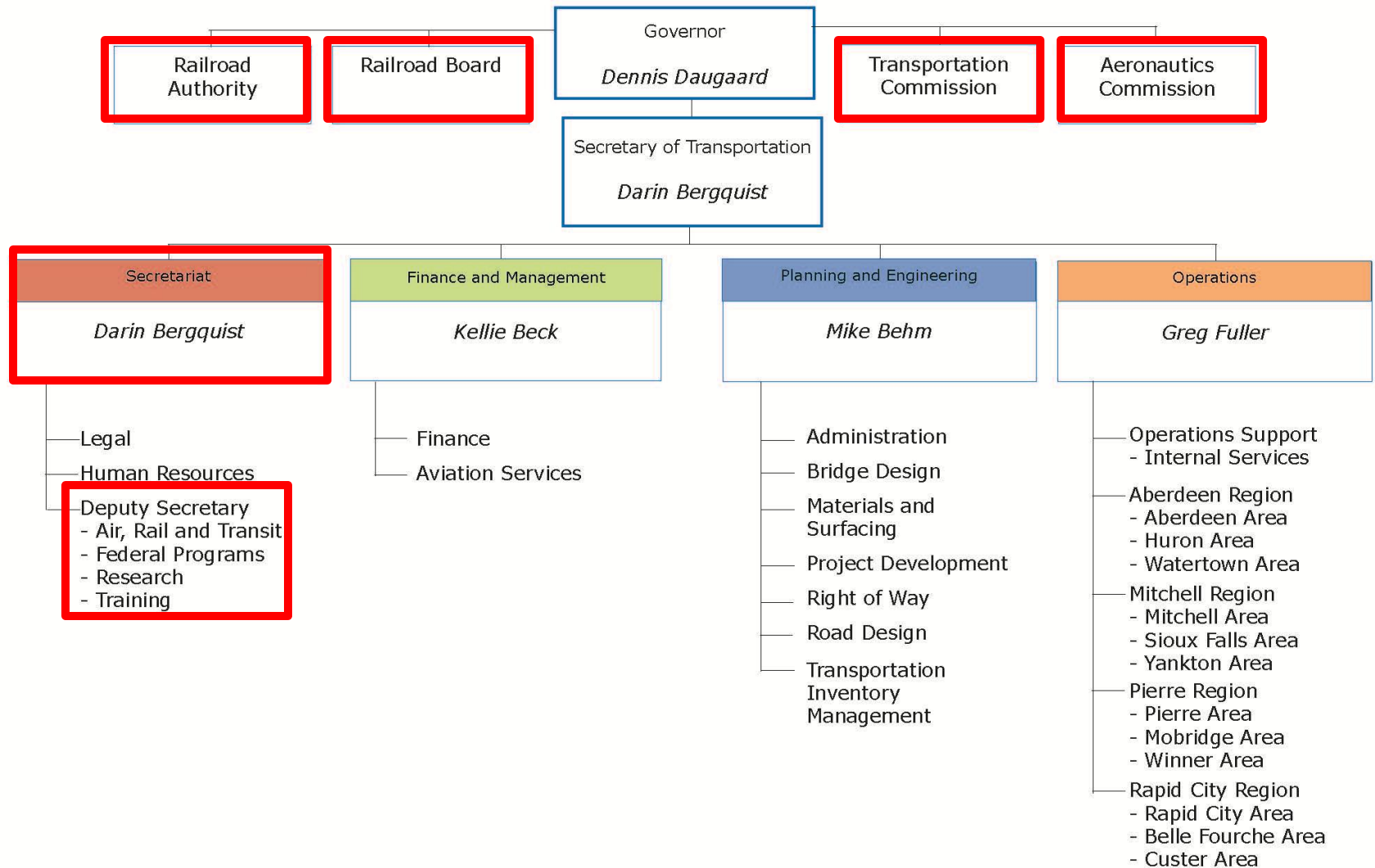
Pennsylvania

DEPARTMENT OF TRANSPORTATION

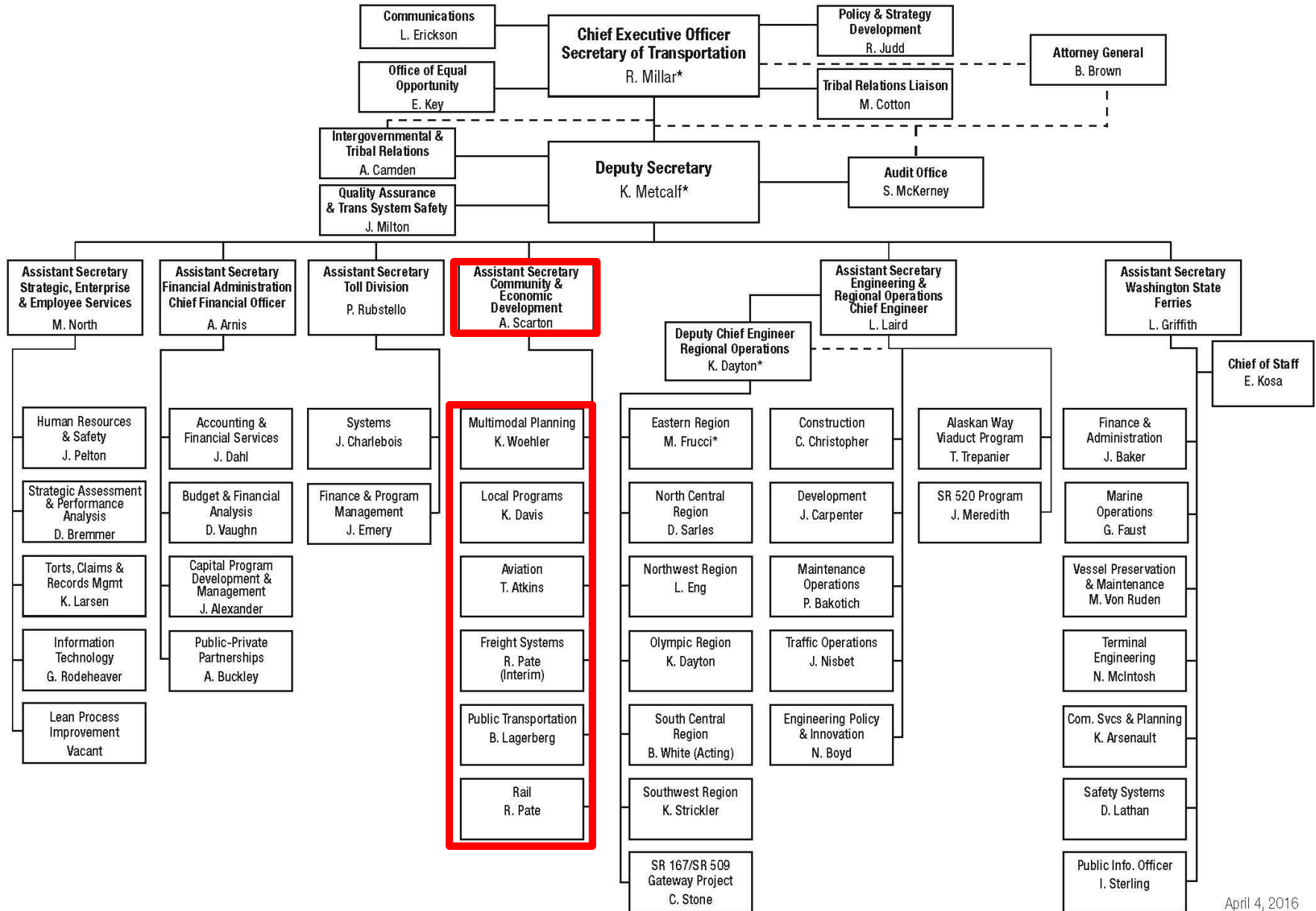
OR-16-010
April 18, 2016



South Dakota Department of Transportation Organization Chart



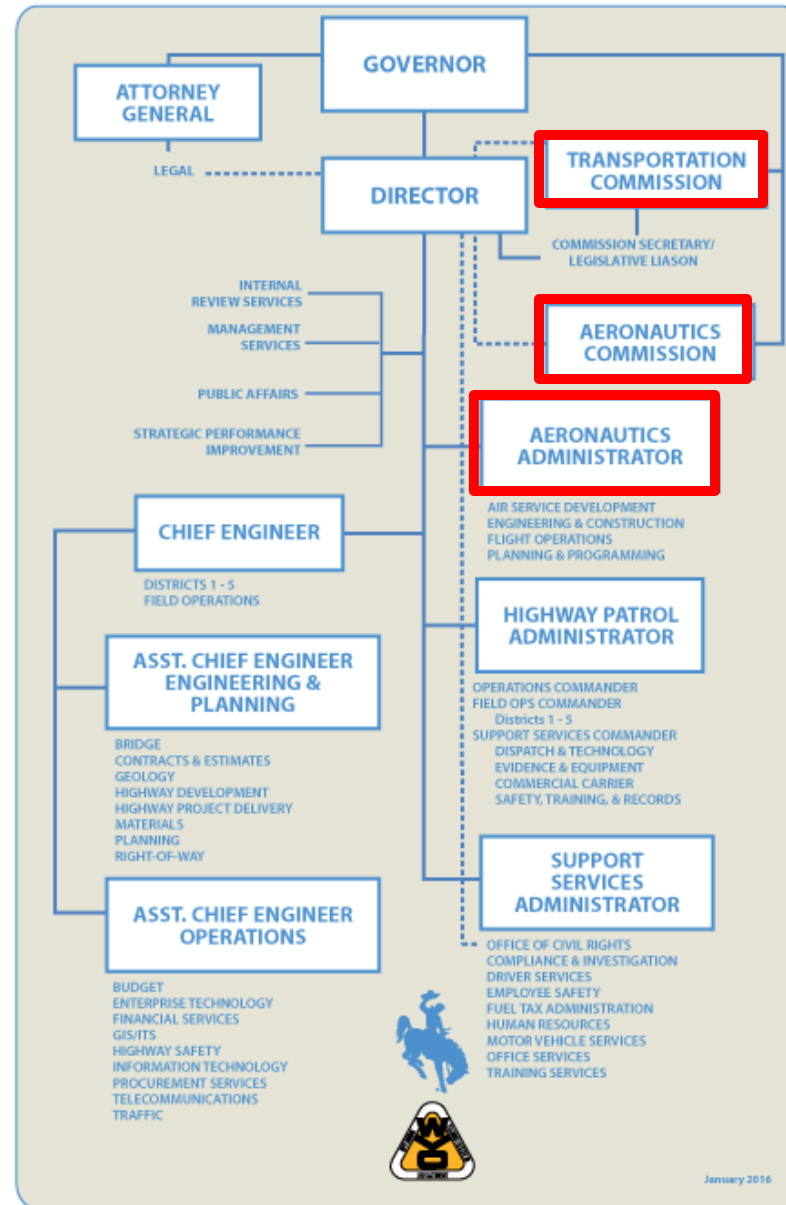
**Citizens of the State of Washington
Governor Jay Inslee**



* Acting

April 4, 2016
Date

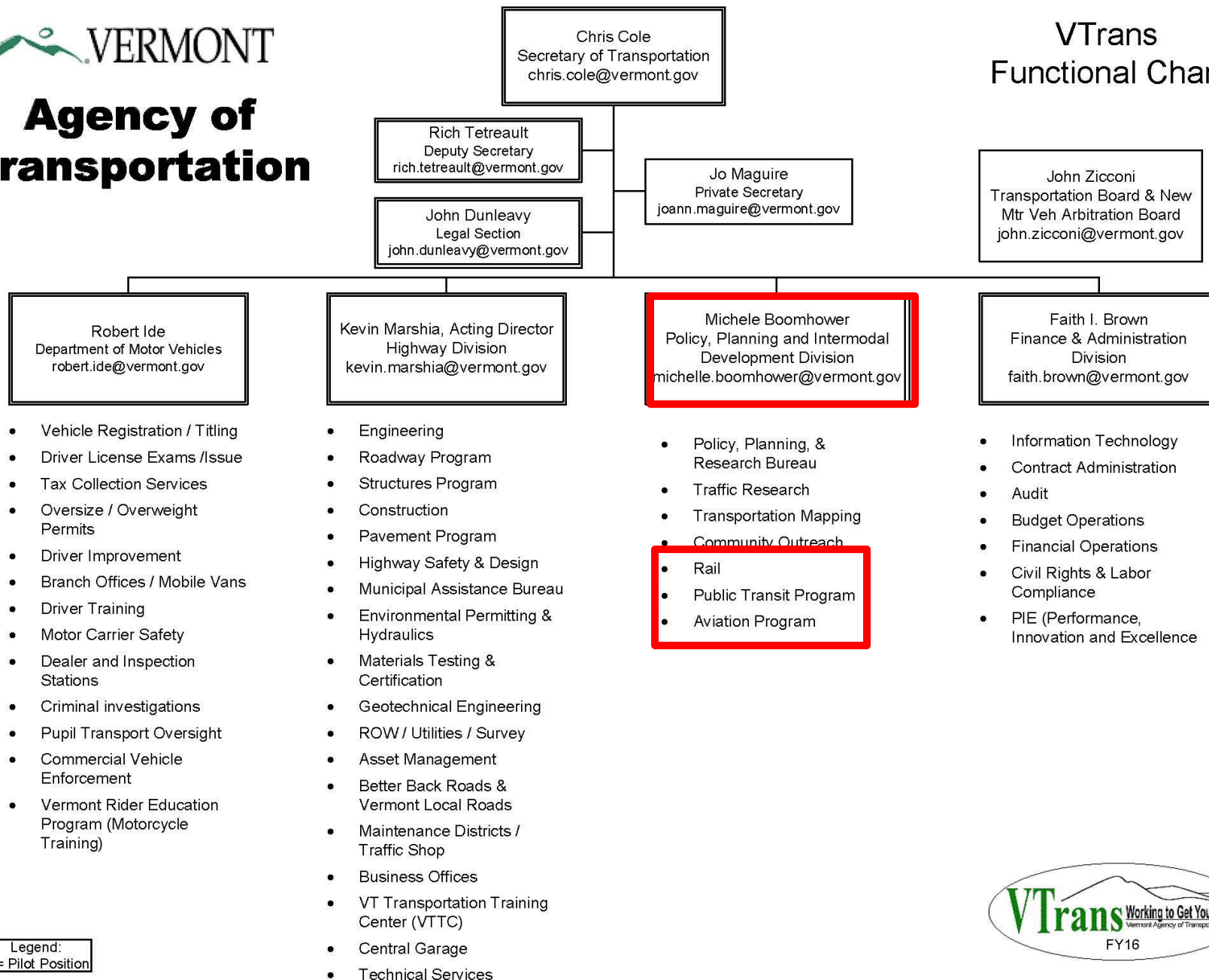
WYOMING DEPARTMENT OF TRANSPORTATION ORGANIZATION CHART





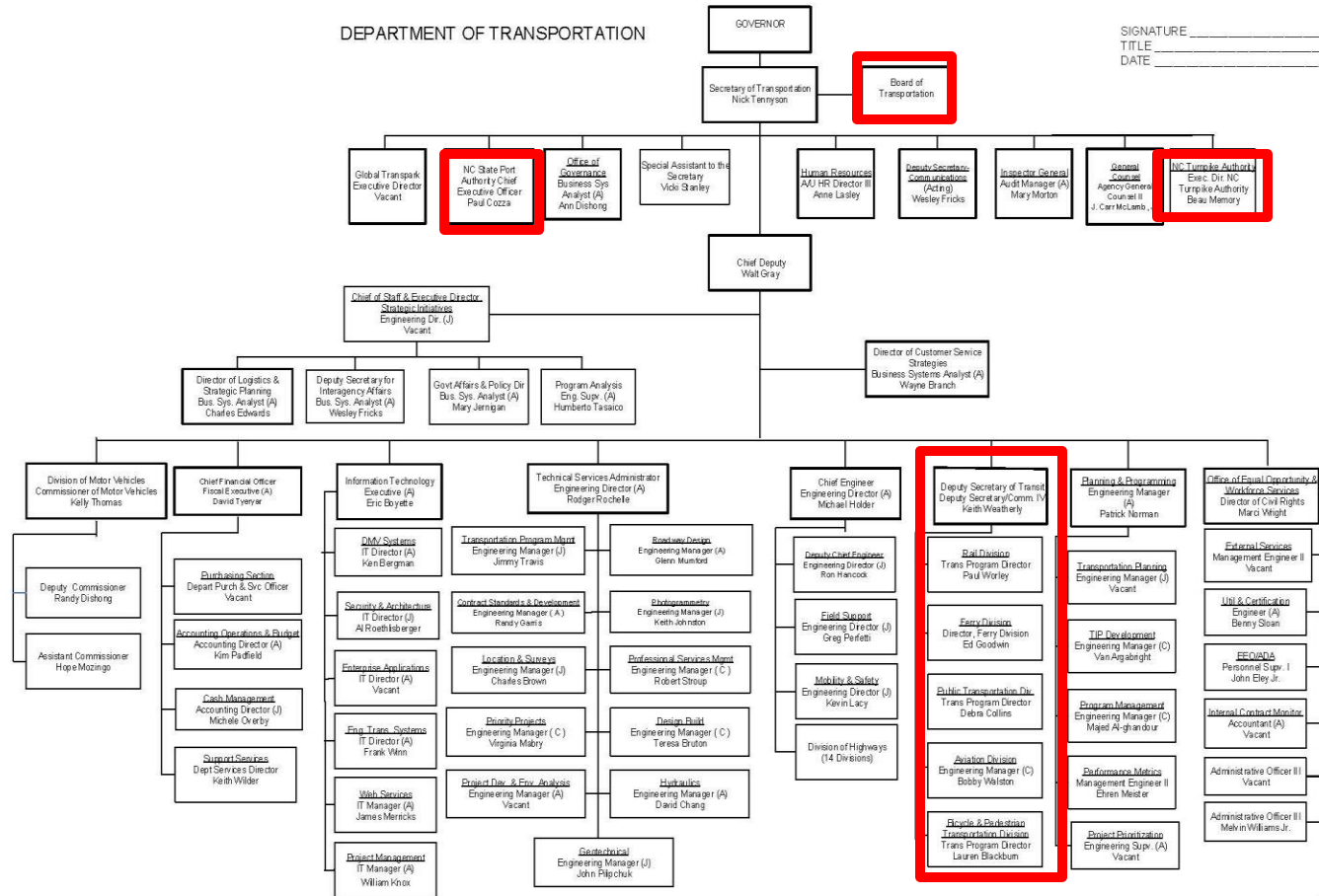
Agency of Transportation

VTrans Functional Chart



FY16

North Carolina



Illinois Department of Transportation
Reorganization Effective February 16, 2016

