

# HANDOUT #1

Wireless LTE Internet for  
Arkansas

Powered by **The Computer Works**



# TYPES OF BROADBAND INTERNET

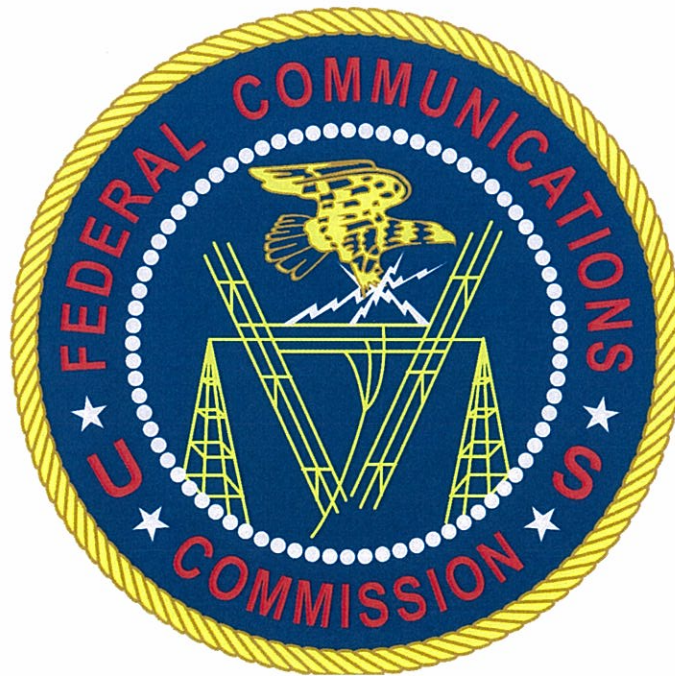
- **DSL (Digital Subscriber Line)**
- **Cable Internet**
- **Fiber**
- **Satellite**
- **Wireless**





# 2015 BROADBAND PROGRESS REPORT

**Federal Communications Commission voted to change the  
definition of broadband from 4Mbps to 25 Mbps**





# BACKGROUND

- **Established in 1989**
- **Owners**
  - Brother and Sister, Pat Wilson and Dee Baker
  - Grew up and live in rural areas
- **Started as a one stop full service computer store**
  - Sales
  - Service
  - Networking
- **Milestones**
  - 1996 Dial Up Internet
  - 2002 DSL Service
  - 2005 Wireless Internet
  - 2006 Purchased ARBBS and Cyberback Internet
  - 2007 Online Backup and Application Hosting
  - 2009 Purchased OzarkISP
  - 2015 Coverage of over 4,000 square miles and over 70 towers



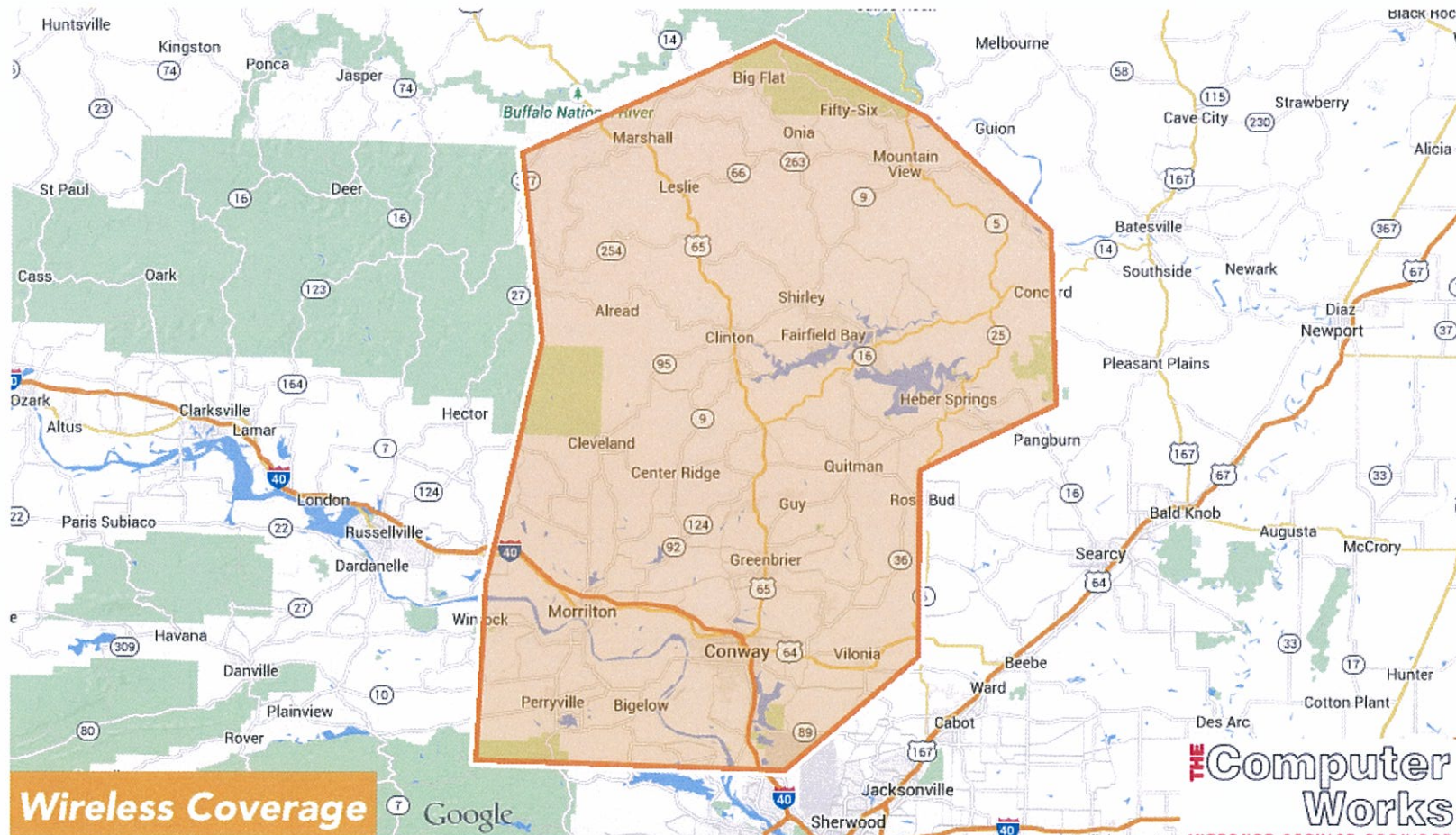


# RURAL ARKANSAS

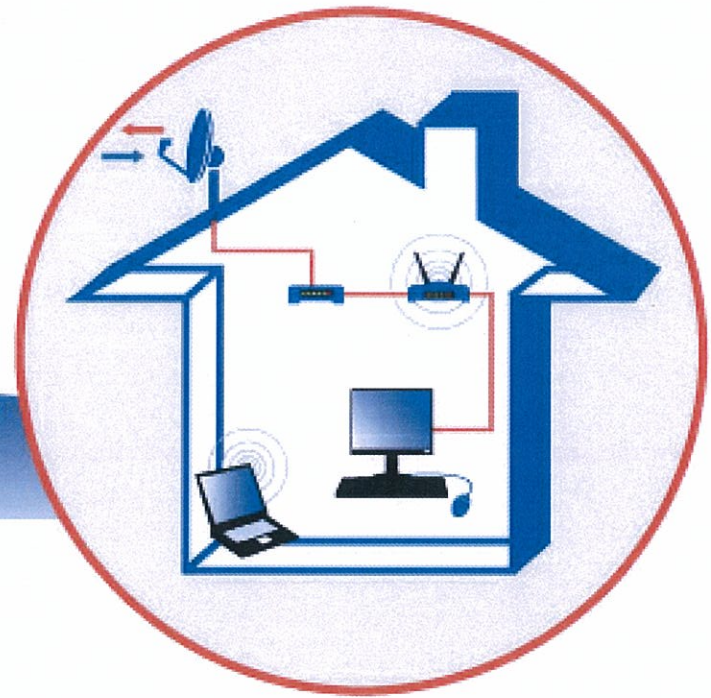
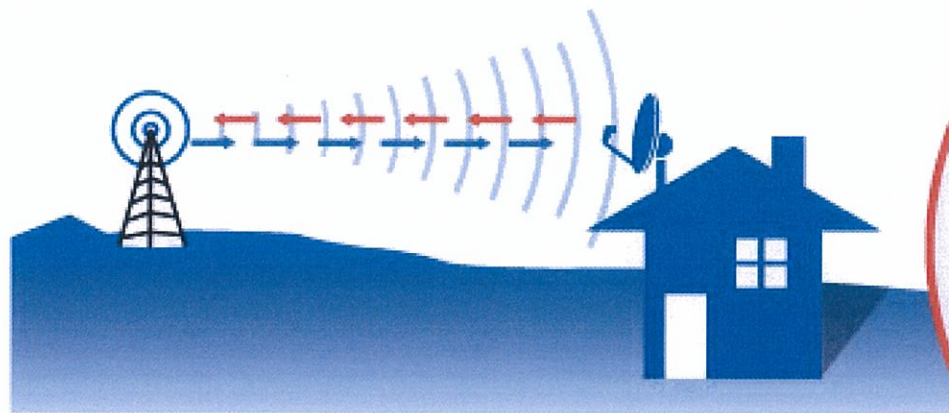




Frequency	Percentage
Often	85%
Not often	15%



# HOW IT WORKS





# PARTNERSHIPS



## COMMUNITIES

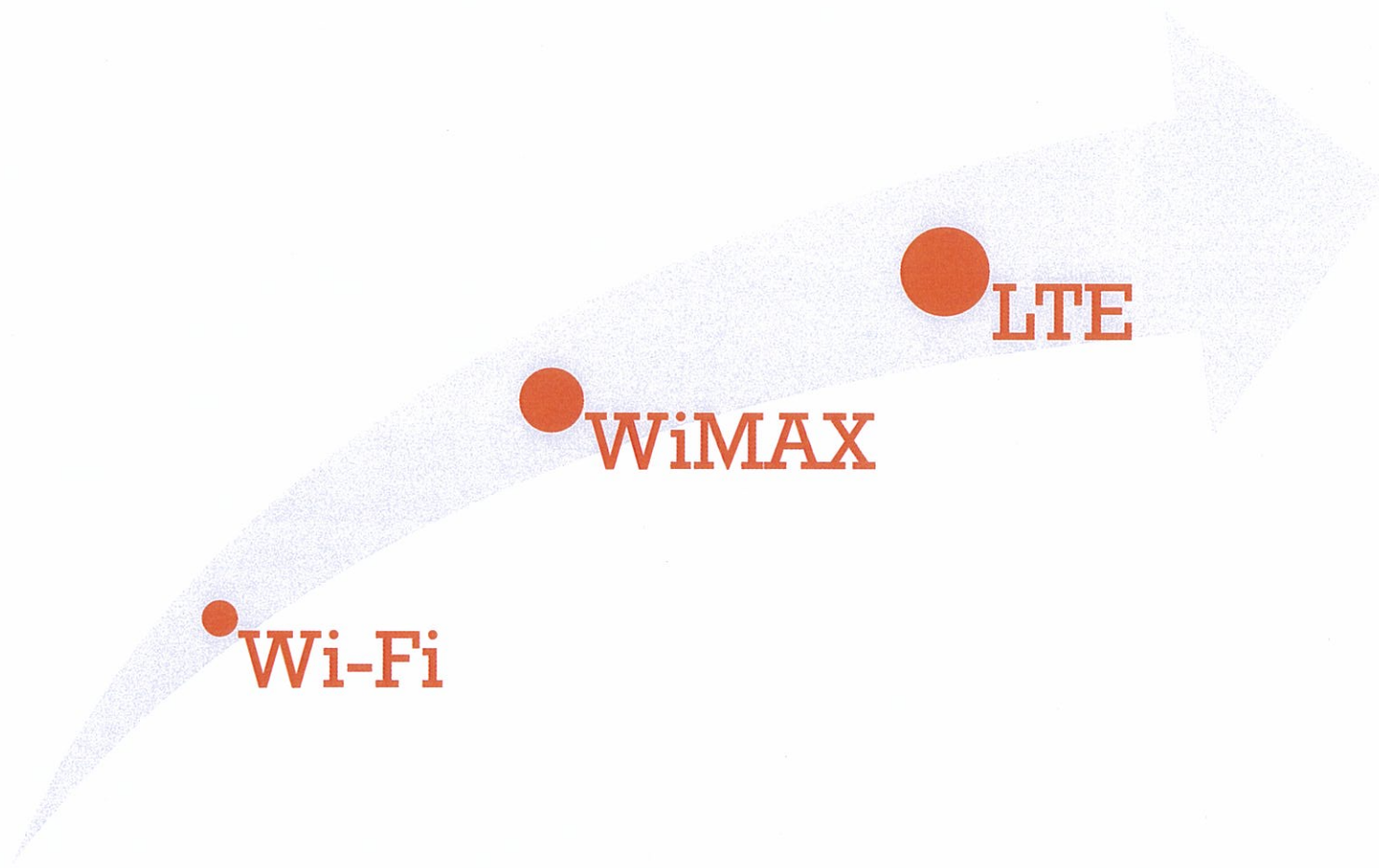
City of Mayflower	Tumbling Shoals Water Department
City of Bigelow	Van Burn County Water
City of Damascus	Community of Witt Springs
City of Greenbrier	Community of Welcome Home
City of Wooster	Community of Snowball
City of Fairfield Bay	Greenbrier Water Department
City of Leslie	Bigelow Water Department
City of Mountain View	Perry County Courthouse
Bee Branch Water	City of Oppello
Town of Big Flat	City of Plumerville
Big Flat Water	Town of Meniffee
Conway County Water	Hillcreek Fire Department
Greenbrier Water	Beaverfork Water
Mountain Top Water	Vilonia Water
Prim Fire Department	Community Water
Arkansas State Forestry Service	Town Twin Groves
	United States Department of Interior Buffalo National River

## COMPANIES





# STAGES OF WIRELESS



# TELRAD LTE

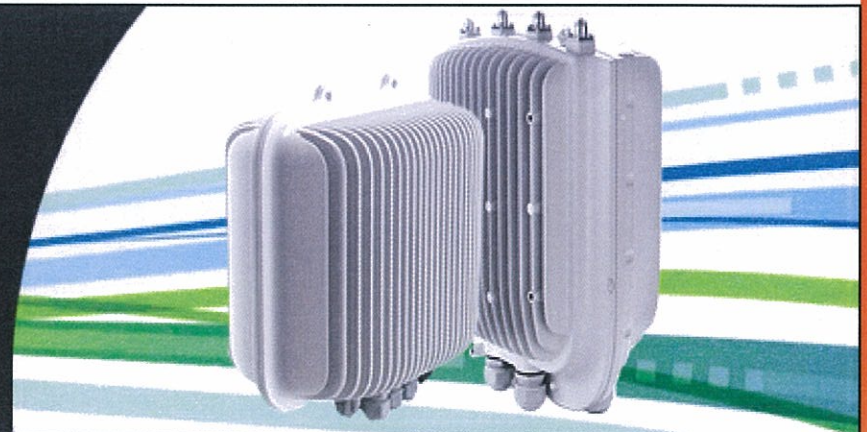


## Most effective wireless internet technology

- Allows for non line of site use
- Foliage Penetration
- Improved Signal
- 10 Mile Radius
- Larger Capacity (Up to 800 Customers/Sector)
- Faster Speed (Up to 100 Mbps/Customer)



**Telrad** 

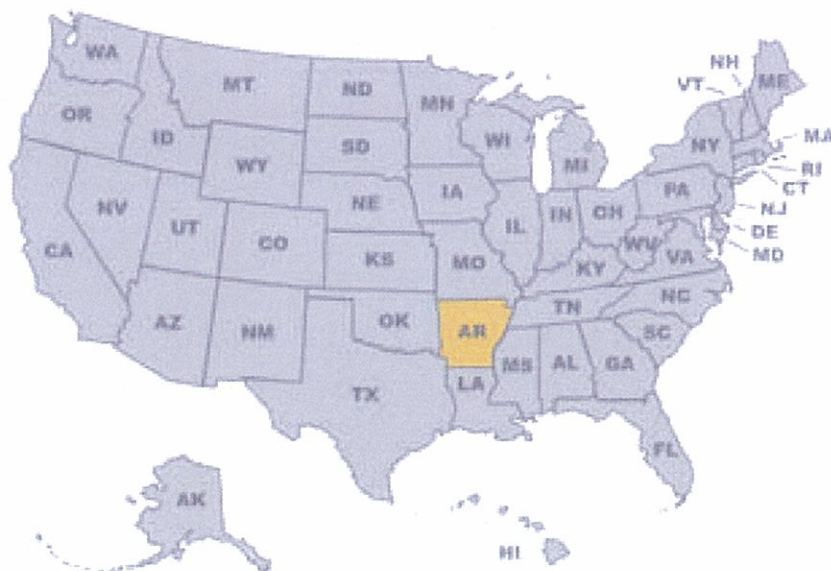






# GROWTH POTENTIAL

- **Only limited by money**
- **Immediate deployment with funds**
- **Resources to back the expansion**
- **Endless growth throughout Arkansas**







**TCW**  
**TOWERS**

