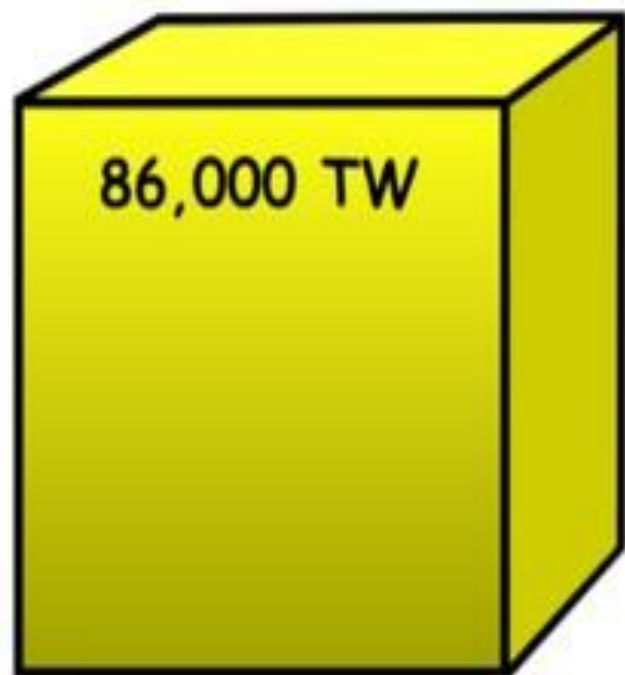


U.S. ENERGY CONSUMPTION



Solar

7.2 TW



Hydro

32 TW



Geothermal

870 TW



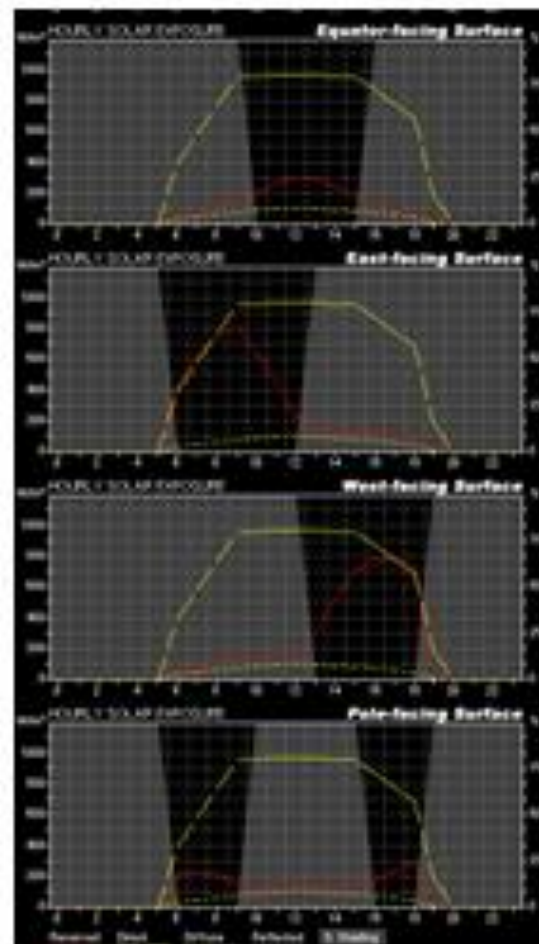
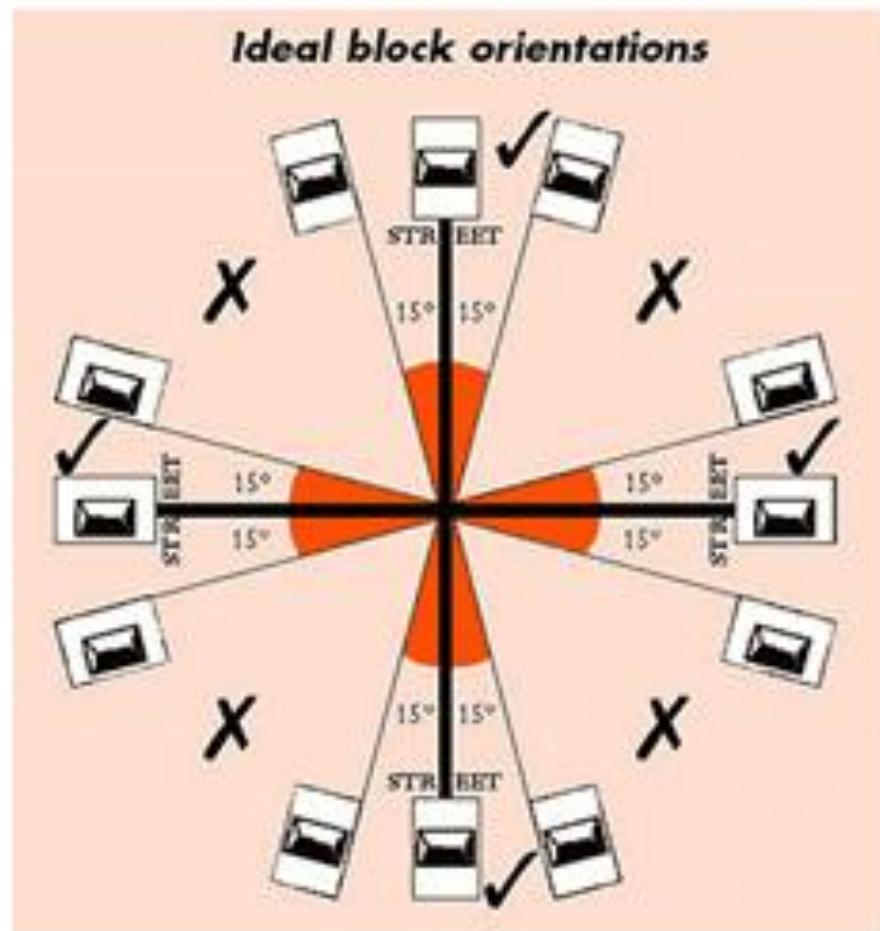
Wind

15 TW



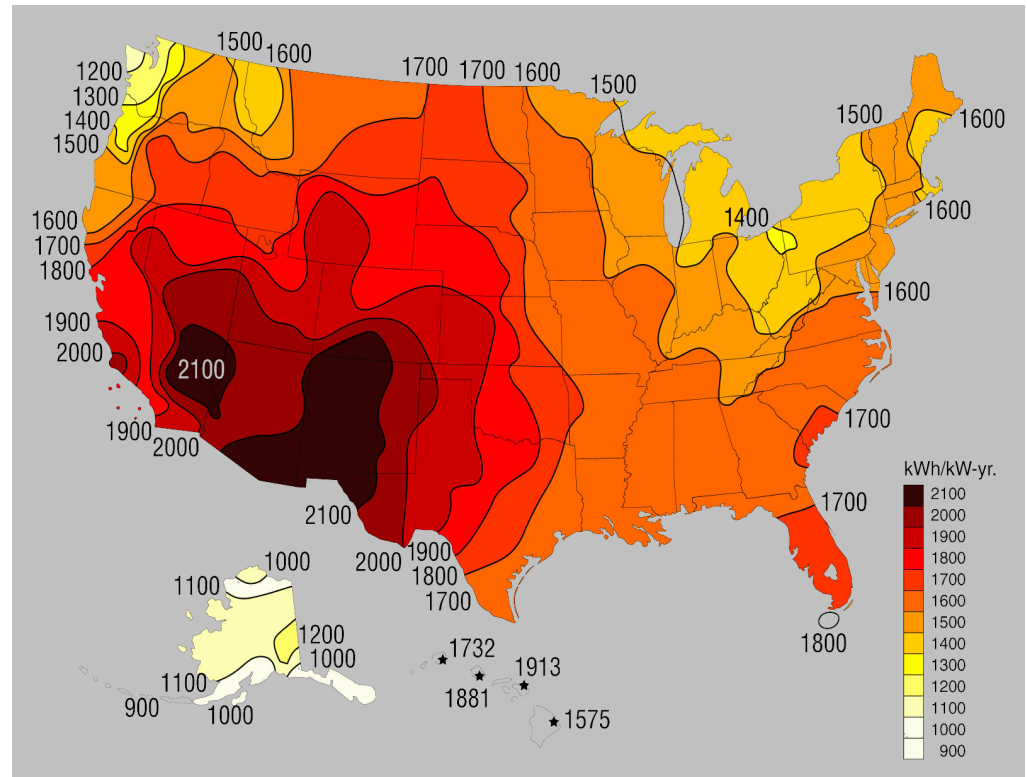
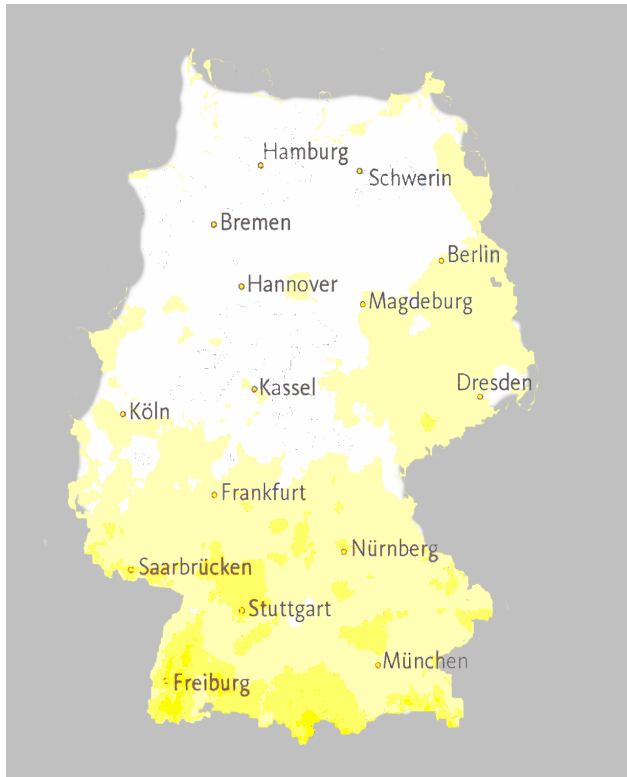
**Global
Consumption**

Appropriate Orientation Yields 30% Energy Savings

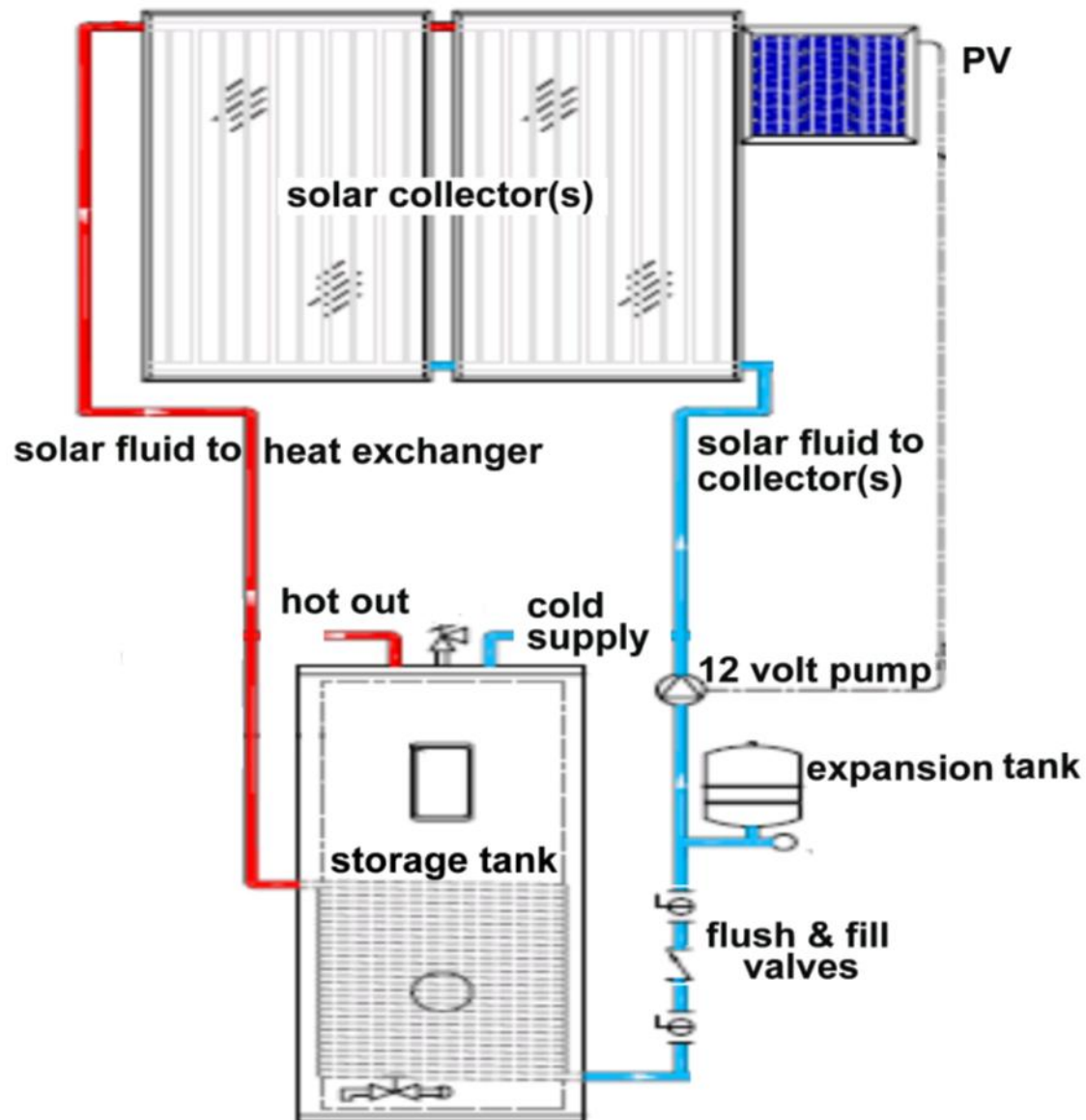




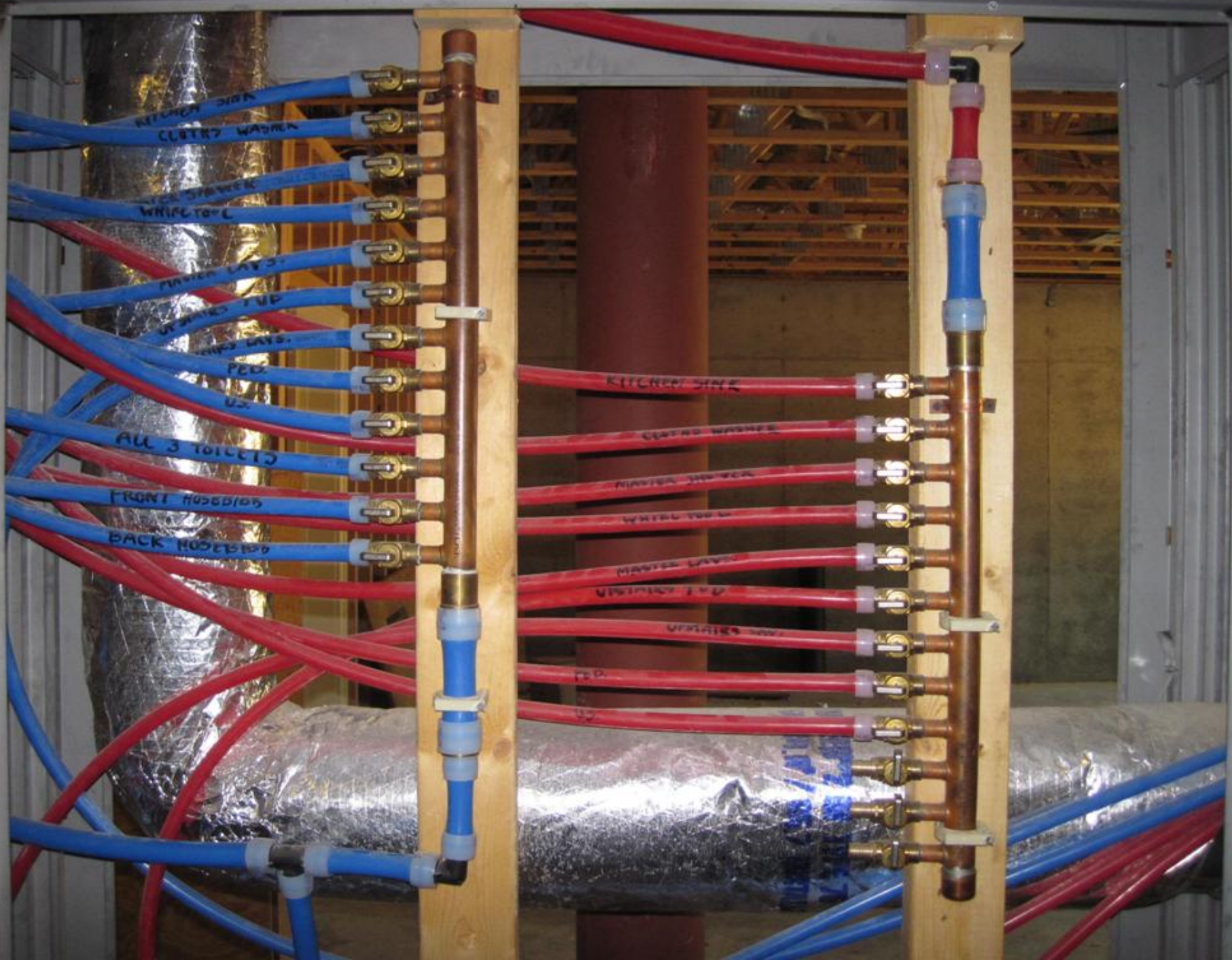
Solar Resource – Germany vs. US



CLOSED LOOP SOLAR DHW with PV PUMP

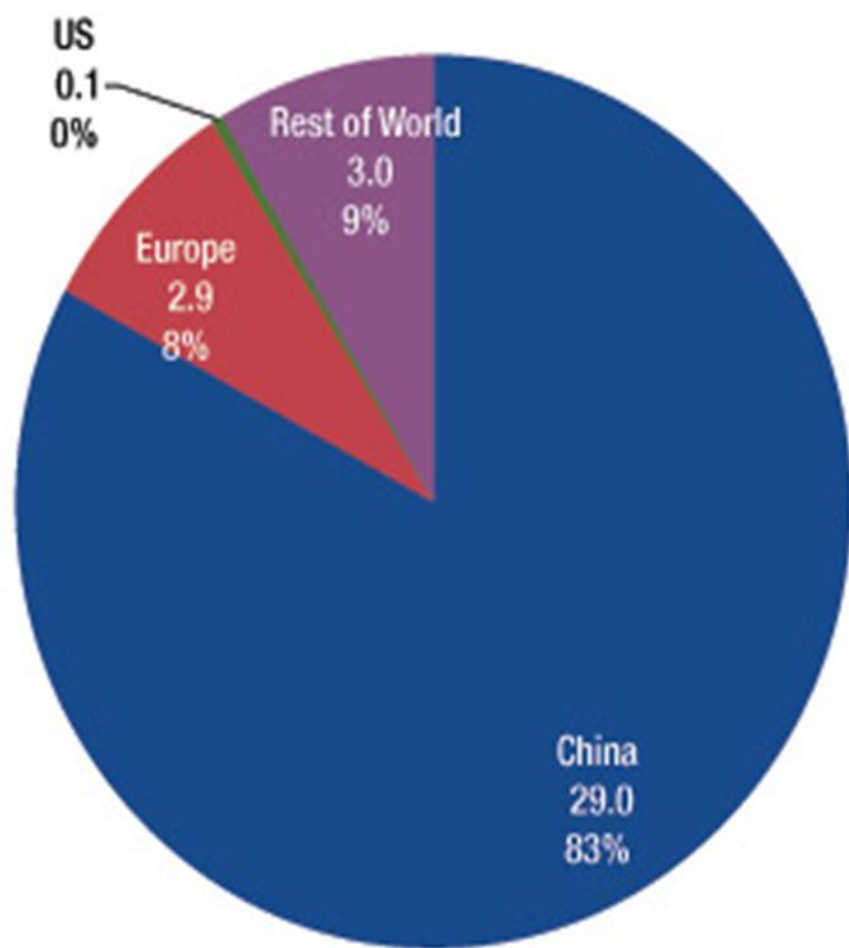








New Installations of Solar Hot Water Systems in 2009
(35 GWth installed worldwide)





ENERGYGUIDE

Heat Pump
Cooling and Heating
Split System

FUJITSU GENERAL AMERICA, INC.
Model AOU12RLS



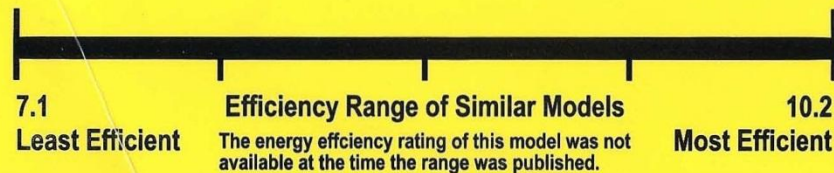
Seasonal Energy Efficiency Ratio

25.0

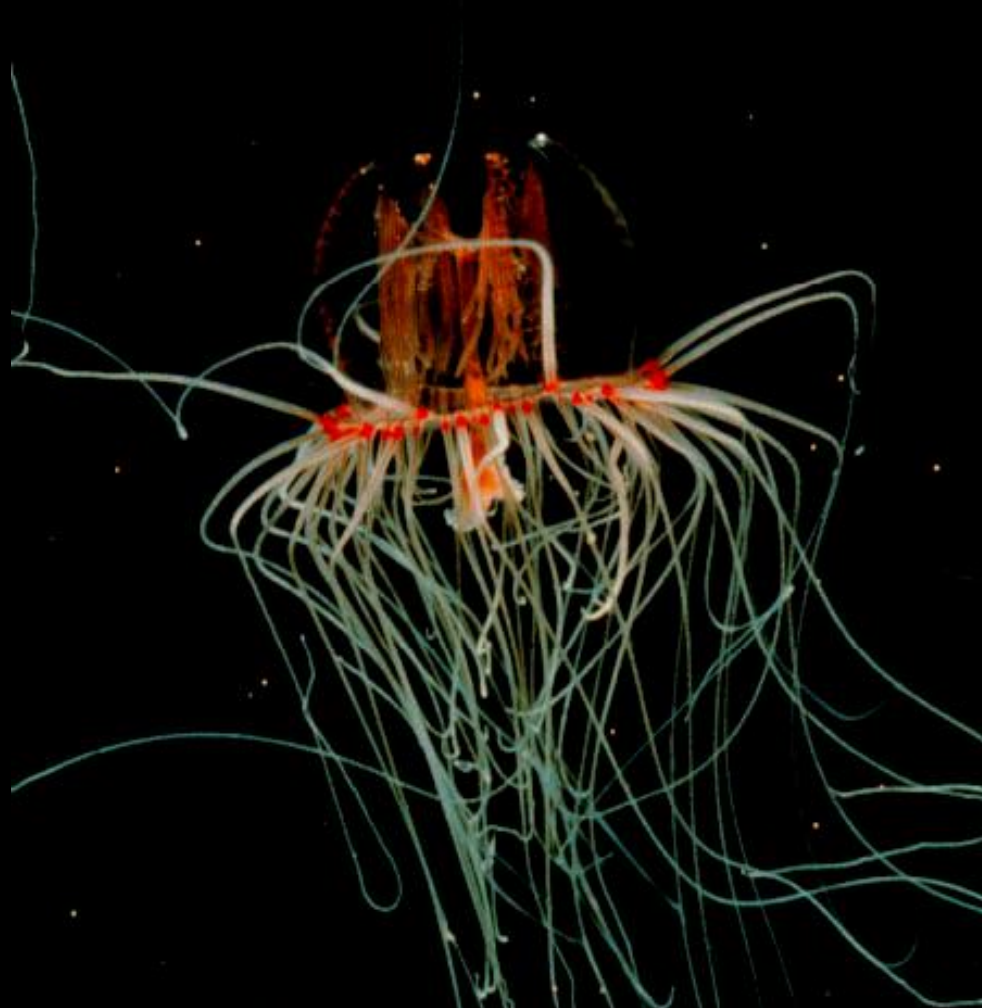


Heating Seasonal Performance Factor

12.0



- Efficiency range based only on split system units.
- This energy efficiency rating is based on U.S. Government standard tests of this condenser model combined with the most common coil. The rating will vary slightly with different coils and in different geographic regions.
- For more information, visit www.ftc.gov/appliances.



“We do not seek to imitate nature, but rather to find the principles she uses.”

-Buckminster Fuller