

*House & Senate*  
**INTERIM COMMITTEES  
ON EDUCATION**

AUGUST 2018

ARKANSAS  
CAMPAIGN FOR  
GRADE-LEVEL  
READING

**OUR  
GOAL**

ALL Arkansas children will read at grade-level by the end of third grade.

CHALLENGE 1

IF SCHOOLS HAVE STRONG PARENT-COMMUNITY TIES, THE PROBABILITY THAT THEY WILL SEE IMPROVEMENTS IN...

- MATH IS 10X HIGHER...
- READING IS 4X HIGHER
- ATTENDANCE IS 1.3X HIGHER

THAN IN SCHOOLS WITH WEAK TIES



PROGRESS

CHALLENGE 1

5,500 FAMILIES

engaging with their children through Talking is Teaching: Talk, Read, Sing

AN ANNUAL AVERAGE OF 400 VOLUNTEERS

tutoring almost 900 aspiring readers in more than 45 schools in Pulaski County through AR Kids Read

56,000 CHILDREN

receiving books from Dolly Parton's Imagination Library and Reach Out and Read



CHALLENGE  
**2**

ONLY ABOUT HALF OF KINDERGARTEN STUDENTS IN ARKANSAS ARE READY FOR SCHOOL WHEN THEY ARRIVE IN THE CLASSROOM.



PROGRESS

CHALLENGE  
**2**

**\$11.4**  
MILLION

to expand quality infant and toddler care through Early Head Start Child Care partnership grants

**\$60**  
MILLION

from the U.S. Department of Education in 2015 to improve and expand pre-K quality and local capacity

**\$114** MILLION

in annual funding for the Arkansas Better Chance pre-K program



CHALLENGE  
**3**

IN 2014-2015, MORE THAN 12 PERCENT OF KINDERGARTEN THROUGH THIRD GRADERS IN ARKANSAS WERE CHRONICALLY ABSENT.



PROGRESS

CHALLENGE  
**3**

**OVER 45**  
SCHOOL DISTRICTS

developing plans to reduce chronic absence through **Make Every Day Count**

IN 2018-2019, **ALL 250+**  
SCHOOL DISTRICTS

in the state will start reporting chronic absence rates, a new accountability measure in the state's ESSA plan



CHALLENGE  
4

IN 2015-2016, ONLY 35% OF ARKANSAS THIRD GRADERS WERE READING ON GRADE LEVEL.



PROGRESS

CHALLENGE  
4

37.8%

of third graders reading on grade level in 2017-2018

30+

AR-GLR partner organizations

1,000 K-2<sup>ND</sup> GRADE

teachers trained through R.I.S.E Arkansas



CHALLENGE  
5

ONLY 21 PERCENT OF ARKANSAS STUDENTS HAVE ACCESS  
TO HIGH-QUALITY SUMMER LEARNING PROGRAMS



PROGRESS

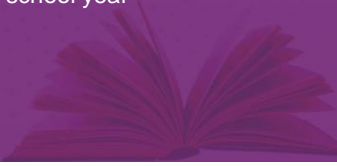
CHALLENGE  
5

11

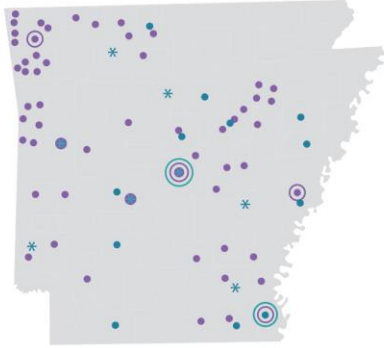
**Summer Learning Initiative** sites across the state are working to stop the summer slide and increase reading levels.

\$4.3  
MILLION

in NSLA funds provided for high-quality after-school and summer learning programs, tutoring and pre-K in the 2016-2017 school year



# OUR COMMUNITIES



- **Community Solutions Initiative**  
 Community-school partnerships to engage parents and communities around local grade-level reading challenges
- **Make Every Day Count**  
 Partnerships with schools and districts to reduce chronic absence
- ✱ **Summer Learning Initiative**  
 Community-school partnerships to reduce summer learning loss
- **Talking is Teaching: Talk, Read, Sing**  
 Community partnerships to engage parents in their children's vocabulary development
- **Aspire Frameworks**  
 Partnerships in Arkansas Community Foundation affiliate communities to increase third grade reading levels

# OUR PARTNERS

ADULT LEARNING ALLIANCE

AR KIDS READ

ARKANSAS 21ST CENTURY SCHOOLS NETWORK

ARKANSAS ADVOCATES FOR CHILDREN & FAMILIES

ARKANSAS ASSOCIATION OF  
EDUCATIONAL ADMINISTRATORS

ARKANSAS COMMUNITY FOUNDATION

ARKANSAS DEPARTMENT OF EDUCATION

ARKANSAS DEPARTMENT OF HUMAN SERVICES

ARKANSAS EDUCATIONAL TELEVISION NETWORK

ARKANSAS EDUCATION ASSOCIATION

ARKANSAS HEAD START STATE COLLABORATION

ARKANSAS HOME VISITING NETWORK

ARKANSAS HUNGER RELIEF ALLIANCE

ARKANSAS STATE UNIVERSITY

ARKANSAS OUT-OF-SCHOOL NETWORK

ARKANSAS PARENT TEACHER ASSOCIATION

ARKANSAS PUBLIC POLICY PANEL

ARKANSAS RESEARCH CENTER

ARKANSAS SCHOOL BOARDS ASSOCIATION

COMMUNITY RESOURCE INNOVATIONS

CURRICULAR CONCEPTS

THE DYSLEXIA PROJECT

DOLLY PARTON'S IMAGINATION LIBRARY

ENDEAVOR FOUNDATION

EXPECT MORE

FORWARD ARKANSAS

HIPPY USA

INVEST EARLY COALITION

NO KID HUNGRY ARKANSAS

REACH OUT & READ ARKANSAS

RURAL COMMUNITY ALLIANCE

UNITED WAY OF NORTHWEST ARKANSAS

WINTHROP ROCKEFELLER FOUNDATION

WORDS TO GROW ON



## Arkansas Workforce Study: Instructional Staff in Child Care & Early Childhood Education, 2017

### Report Summary

Lorraine McKelvey, Ph.D.  
Andrew Forsman  
Jamie Morrison-Ward



<https://familymedicine.uams.edu/arkansas-workforce-study/>

## METHODOLOGY

### ONLINE SURVEY

sent to early childhood educators  
working with children from birth  
to pre-K in licensed child care  
centers around the state

OVER  
**1,400**

respondents including 1270  
current and 151 former staff

Two focus groups with  
34 current early  
childhood educators



## FINDINGS | EDUCATION

**61%**

have an early childhood  
education degree or credential

ONLY  
**31%**

have a bachelor's degree



## FINDINGS | WAGES

RANGE FROM  
**\$20,030**

with no ECE credentials to

**\$40,206**

with master's degree  
or higher

Even with a master's  
degree, they make

**\$5,000**

on average less than  
kindergarten teachers



## FINDINGS | BENEFITS

Only half are offered health or dental insurance through their jobs

**JUST 40%** have retirement benefits

**35%**

have no paid holidays or sick days

## FINDINGS | ECONOMIC AND FOOD INSECURITY

**58%** had trouble paying for basic economic needs in the last year (medical, rent, utility bills, transportation)

**40%** of the workforce, and  
**50%** of the infant and toddler workforce.  
**ARE FOOD INSECURE**

## FINDINGS | MENTAL HEALTH

---

**35%** of workforce screened positive for depression risk



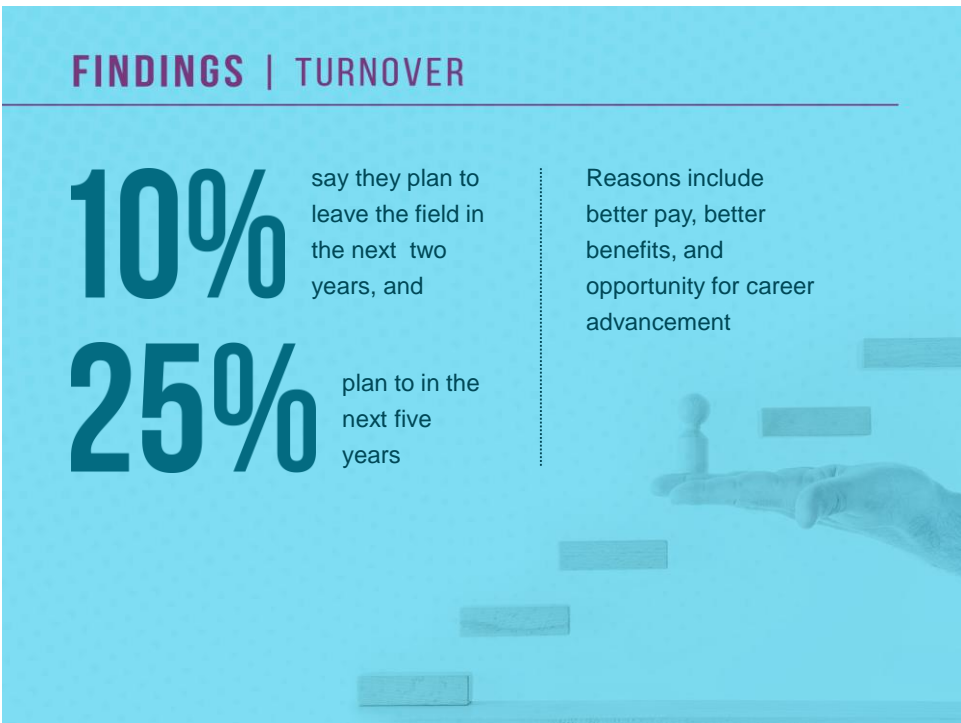
## FINDINGS | TURNOVER

---

**10%** say they plan to leave the field in the next two years, and

**25%** plan to in the next five years

Reasons include better pay, better benefits, and opportunity for career advancement



## RECOMMENDATIONS

---

**1** Explore options for increasing early childhood education teachers' pay and benefits.

**2** Support mentor- and coaching-based training modalities, including when working with children with behavioral and other special needs.

**3** Find ways to support and incentivize additional college-level education for current staff.

**4** Explore additional options to support staff who are caring for our youngest children.