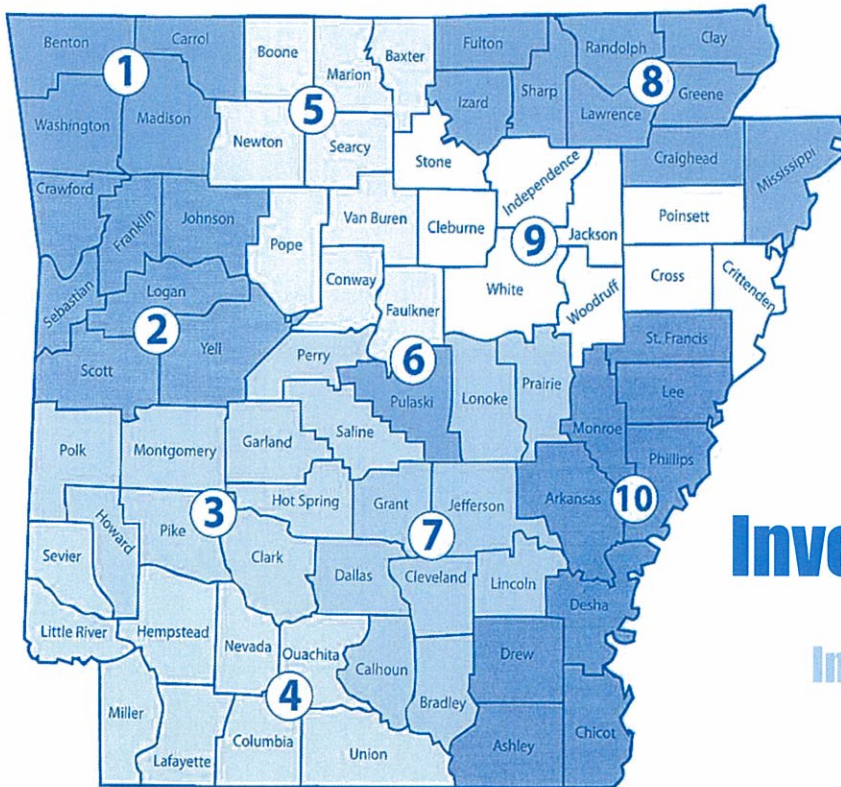


QUARTERLY PERFORMANCE REPORT

3RD QUARTER

SFY 2014

January 1, 2014 – March 31, 2014



Investigations

SUPPORTIVE SERVICES

In-home Protective Services

ADOPTIONS

Differential Response
Foster Care

Produced for
Arkansas Department of Human Services
Division of Children and Family Services
by
Hornby Zeller Associates, Inc.

Table of Contents

| | |
|------------------------------------------------------------------------------------------------------------------------------------------------------------|-----------|
| Reports of Child Maltreatment | 1 |
| Volume and Description of Child Maltreatment Reports | 1 |
| Meeting Agency Policies | 4 |
| Benefits to Children and Families | 6 |
| In-Home Services | 7 |
| Volume and Description of Cases | 7 |
| Meeting Agency Policies | 8 |
| Benefits to Children and Families | 9 |
| Foster Care | 10 |
| Volume and Description of Cases | 10 |
| Meeting Agency Policies | 13 |
| Benefits to Children and Families | 15 |
| Adoption | 16 |
| Volume and Description of Cases | 16 |
| Meeting Agency Policies | 17 |
| Benefits to Children and Families | 18 |
| Resources | 19 |
| Caseworkers and Caseloads | 19 |
| Foster Homes | 20 |
| Appendices | 23 |
| <i>Appendix A: Breakdown of Child Maltreatment Reports</i> Received During the Quarter and Substantiation Rates of Maltreatment Investigations | 23 |
| <i>Appendix B: Summary of Reports Involving Child Fatality</i> | 24 |
| <i>Appendix C: Summary of Reports Involving Near Child Fatality</i> | 26 |
| <i>Appendix D: Summary of Reports Involving Fatalities of</i> Children In Foster Care Who Did Not Receive A Maltreatment Investigation | 27 |
| <i>Appendix E: Average Caseload by County</i> | 28 |
| <i>Appendix F: Foster Home Closure Reasons</i> | 29 |
| <i>Appendix G: Summary of Foster Care Maltreatment Reports</i> | 31 |

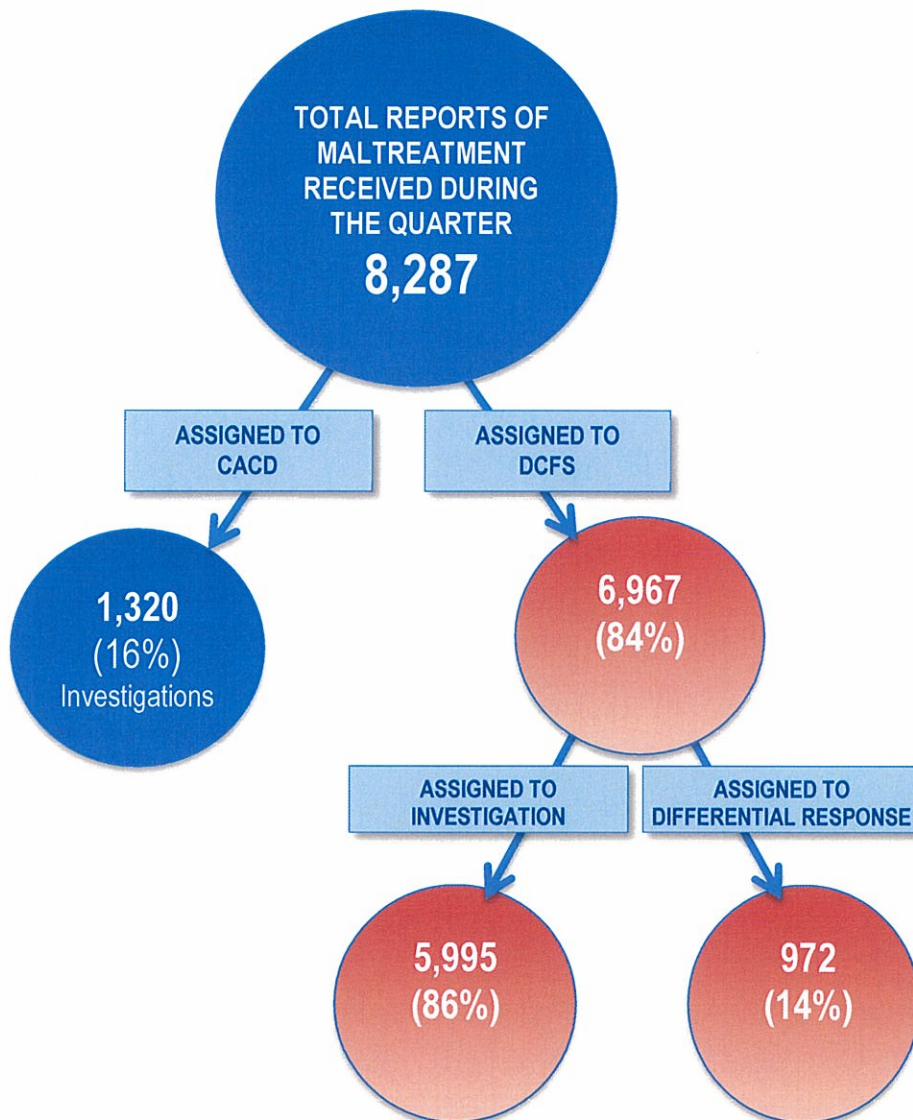
Reports of Child Maltreatment

Quick Facts

Volume and Description of Child Maltreatment Reports

VOLUME OF INCOMING REPORTS

Maltreatment Reports Received During
3rd Quarter SFY 2014



Of the 8,287 reports of child maltreatment accepted by the Arkansas Child Abuse Hotline during the quarter, 84 percent were assigned to DCFS and 16 percent were assigned to the Crimes Against Children Division (CACD) of the Arkansas State Police, which is responsible for investigating the most serious allegations of maltreatment.

Of the reports assigned to DCFS, 86 percent were assigned for an investigation and 14 percent were handled through Differential Response (DR).

DCFS initially piloted the DR program in several counties in October 2012, and by August 2013 the agency had implemented the program statewide.

DR allows the Division to respond to specific, low-risk maltreatment reports through a family assessment and provision of services rather than a traditional investigation.

The following types of allegations can qualify for DR:

- Inadequate Supervision if children are at least five
- Environmental Neglect if children are at least three
- Medical Neglect if children are at least thirteen
- Lock Out if children are at least ten
- Inadequate Food, Inadequate Shelter, Inadequate Clothing, and Educational Neglect with no age Restrictions.

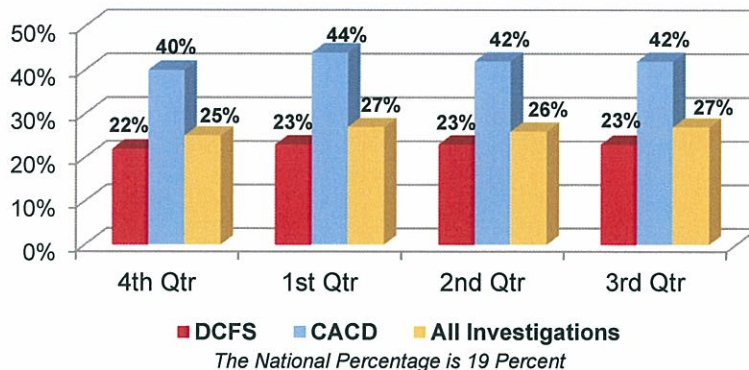
Quick Facts

FINDINGS OF CHILD MALTREATMENT INVESTIGATIONS

Twenty-three percent of the investigations assigned to DCFS during the quarter were found true, compared to 42 percent for CACD. The overall substantiation rate stood at 27 percent.

Appendix A provides further detail on the number of referrals accepted for investigation and those found true for the past four quarters.

Percentage Of Investigations Found True



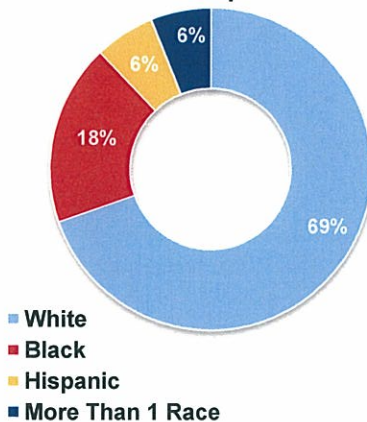
CHARACTERISTICS OF CHILDREN INVOLVED IN TRUE INVESTIGATIONS

There were 2,165 victim children involved in the maltreatment investigations that were found true.

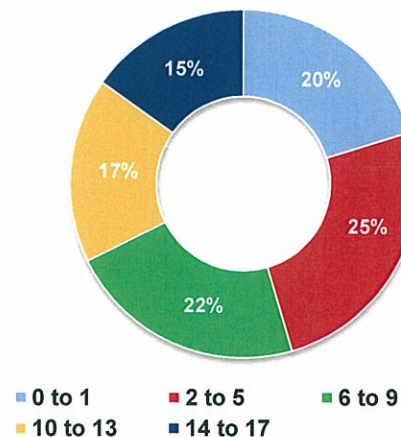
Of those children, 69 percent were white and 18 percent were black. Children ages two to five represented the largest group involved in true maltreatment investigations.

A slight majority of the victim children during the quarter (53 percent) were female.

Race/Ethnicity of Children in True Reports



Ages of Children in True Reports



TYPES OF ALLEGATIONS IN TRUE INVESTIGATIONS

The majority of the 2,165 victim children in true investigations were involved in allegations of neglect, followed by allegations of physical abuse and then sexual abuse.

Percentage of Children in True Allegations of Maltreatment

| | Number of Children Cited in True Allegation | Percentage of Children Cited in True Allegation |
|----------------|---------------------------------------------|-------------------------------------------------|
| Neglect | 1,373 | 63% |
| Physical Abuse | 495 | 23% |
| Sexual Abuse | 461 | 21% |

A child may have more than one allegation.

Quick Facts

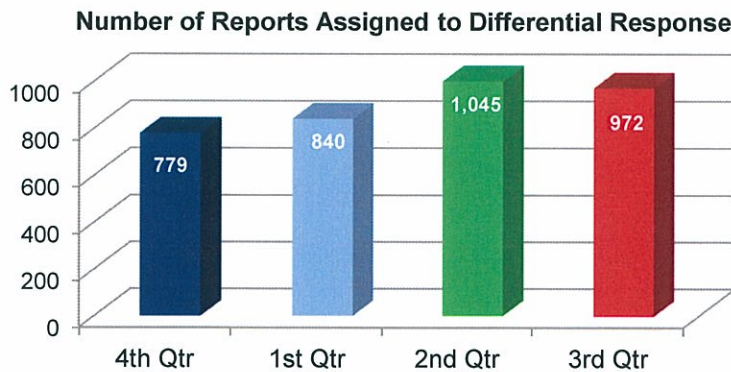
REPORTS INVOLVING FATALITIES OR NEAR FATALITIES

| Findings of Maltreatment Reports Involving Fatalities or Near Fatalities | | |
|--------------------------------------------------------------------------|----------------|---------------------|
| Finding | Child Fatality | Near Child Fatality |
| True | 5 | 0 |
| Unsubstantiated | 0 | 0 |
| Pending | 2 | 0 |

During the quarter, there were seven maltreatment investigations of a child fatality; there were no investigations concerning a near child fatality. Of the seven child fatality investigations, five were found true and two were still pending.

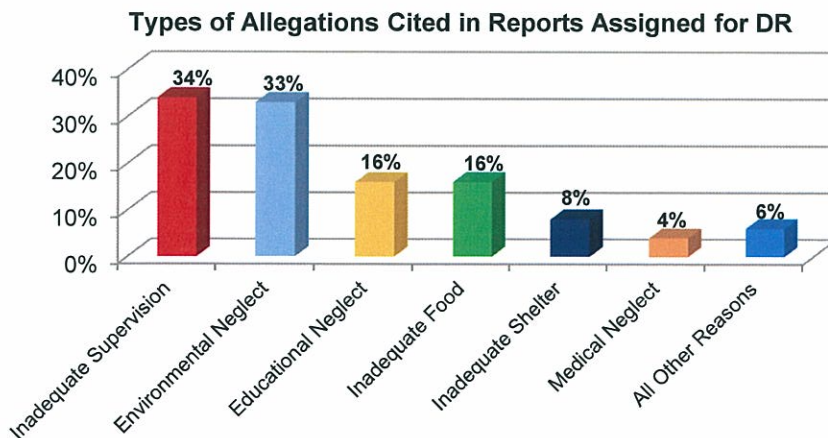
Appendix B includes more details regarding these fatalities.

REPORTS ASSIGNED FOR DIFFERENTIAL RESPONSE (DR)



The number of reports assigned to DR (972) during the quarter decreased by seven percent compared to the previous quarter.

ALLEGATIONS CITED IN DR REPORTS



Inadequate Supervision and Environmental Neglect were the most commonly cited allegations in reports assigned to DR.

Quick Facts

Meeting Agency Policies

TIMELINESS OF INITIATING INVESTIGATIONS

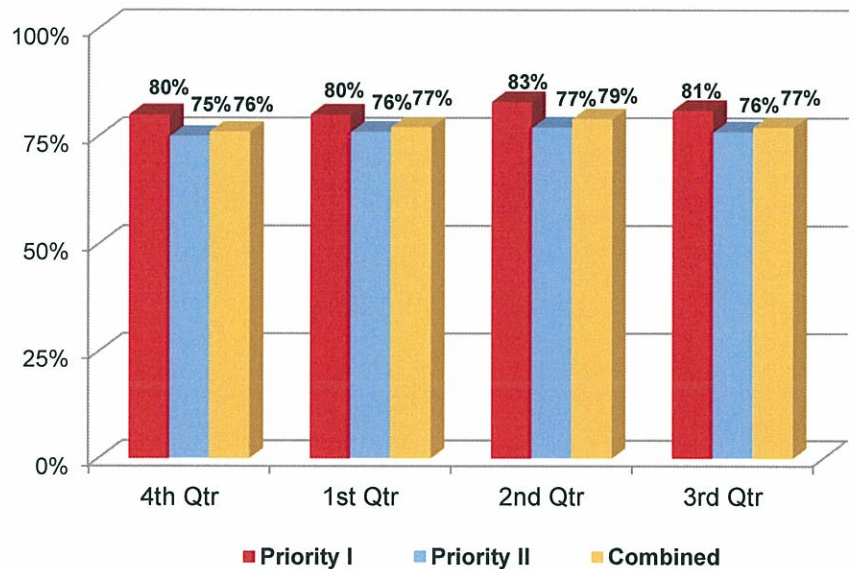
The law requires reports of maltreatment to be initiated within 24 hours of a Priority I report or within 72 hours of a Priority II report.

Priority I reports cite more severe allegations while Priority II reports cite comparatively less serious allegations.

Initiation occurs when all victim children are interviewed or observed (if too young for an interview) within the designated timeframes.

DCFS initiated 77 percent of its investigations on time during the third quarter. The Division's performance was slightly higher at initiating Priority I reports.

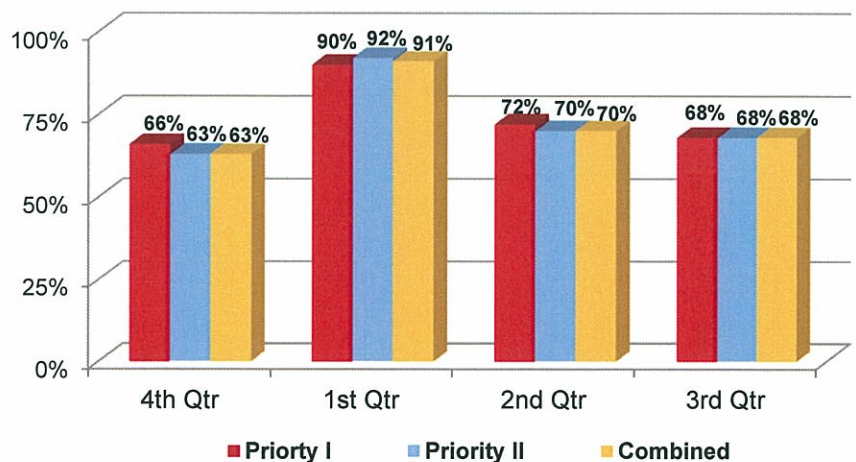
Timely Initiations of Child Maltreatment Investigations (DCFS Only)



TIMELINESS OF COMPLETING INVESTIGATIONS

DCFS completed 68 percent of its investigations on time (within 45 days of receipt of the report) during the quarter, a decrease from the previous quarter.

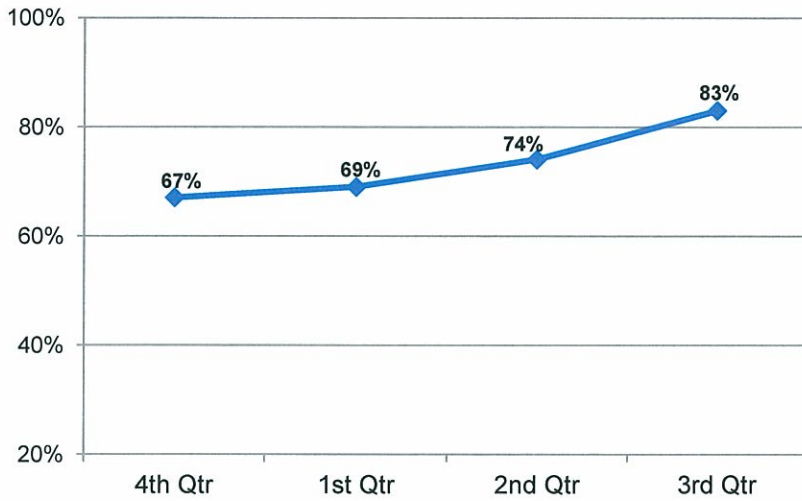
Timely Completion of DCFS Investigations (DCFS Only)



Quick Facts

TIMELINESS OF INITIATING REPORTS ASSIGNED TO DR

Timeliness of DR Initiations

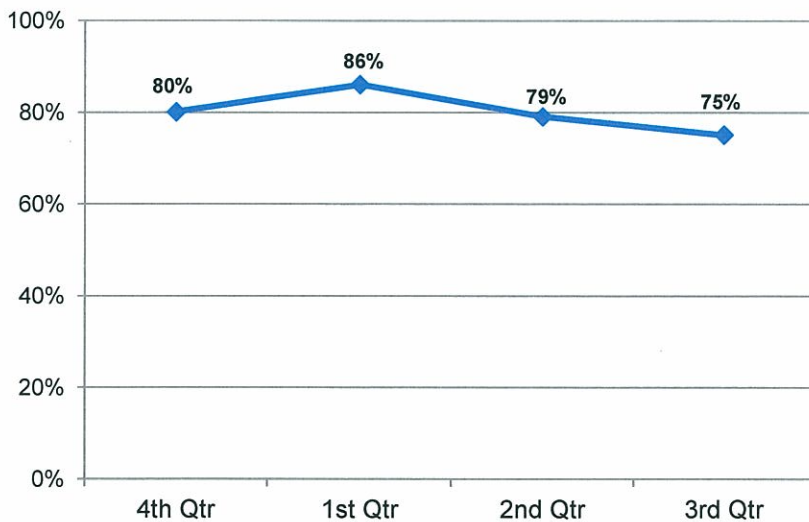


DR referrals must be initiated within 72 hours of receipt of the report.

DCFS initiated 83 percent of its DR reports on time during the quarter.

TIMELINESS OF COMPLETING REPORTS ASSIGNED TO DR

Timeliness of DR Closures (Within 30 Days)



Reports assigned to DR must be closed within 30 days of receipt of the report.

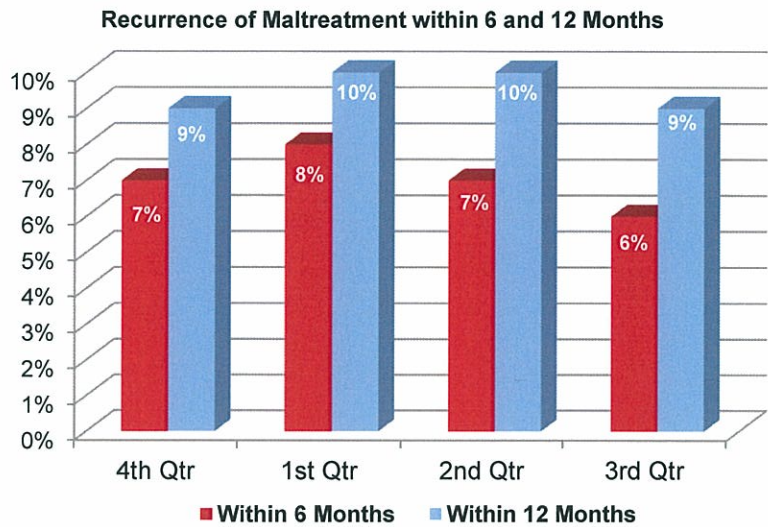
The Agency closed 75 percent of its DR reports within 30 days.

Quick Facts

Benefits to Children and Families

PREVENTING THE RECURRENCE OF MALTREATMENT

Nine percent of the victim children involved in true investigations experienced a recurrence of maltreatment within 12 months. Six percent experienced a recurrence of maltreatment within six months, which barely misses the national standard.

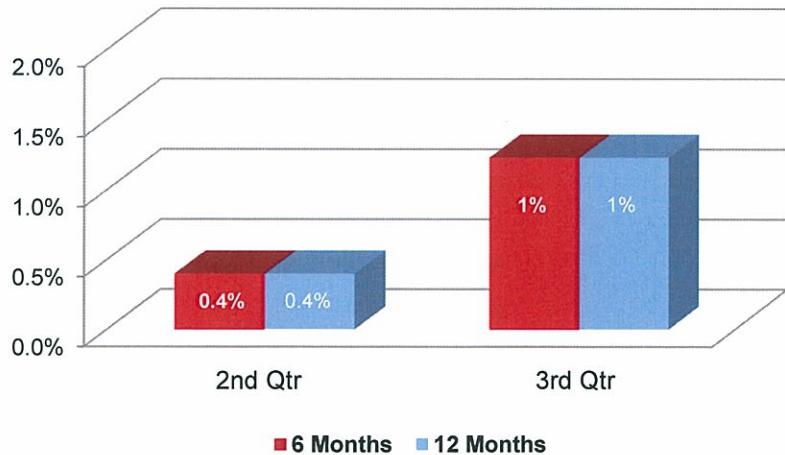


The National Standard for absence of recurrence within six months is 5.4 percent or less

ABSENCE OF RECURRENCE AMONG FAMILIES WHO RECEIVED DR

Only one percent of the children who began receiving DR services were involved in a true investigation of child maltreatment within six and 12 months. This is a better result than the children who received traditional investigations.

Percentage of Children Involved in True Maltreatment Reports Within Six and Twelve Months of Receiving DR

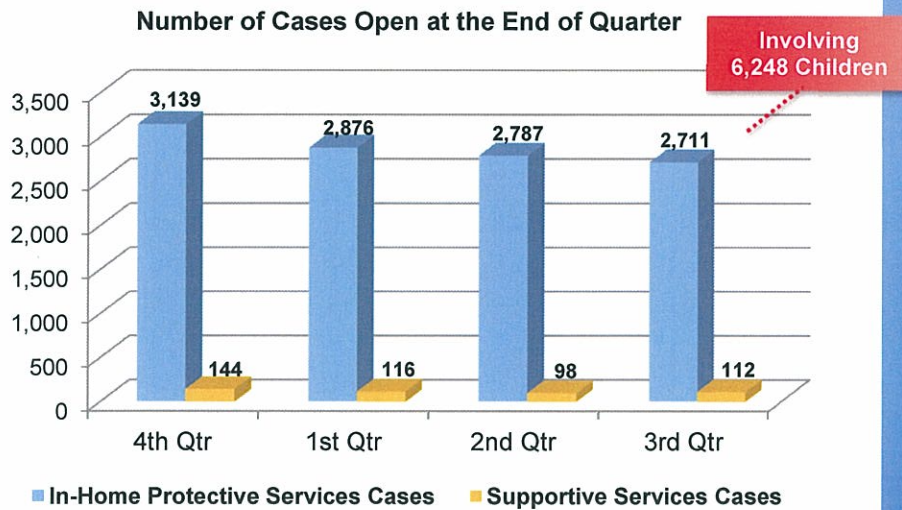


In-Home Services

Quick Facts

Volume and Description of Cases

VOLUME OF CASES

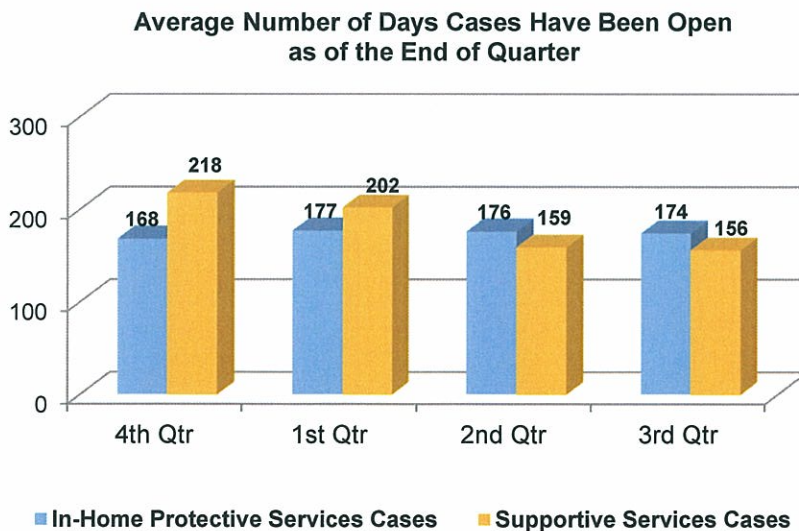


In most instances DCFS offers in-home services through a protective services case, which are opened when a true maltreatment report or court order necessitates DCFS' involvement with a family but there is not an immediate threat to any child's safety in the home.

The number of in-home protective services cases decreased by three percent during the quarter. At the end of the quarter, there were 2,711 in-home cases open across the state, involving 6,248 children.

The Division also offers some in-home supportive services to families on a voluntary basis. DCFS was responsible for 112 supportive services cases at the end of the quarter.

LENGTH OF TIME CASES HAVE BEEN OPEN



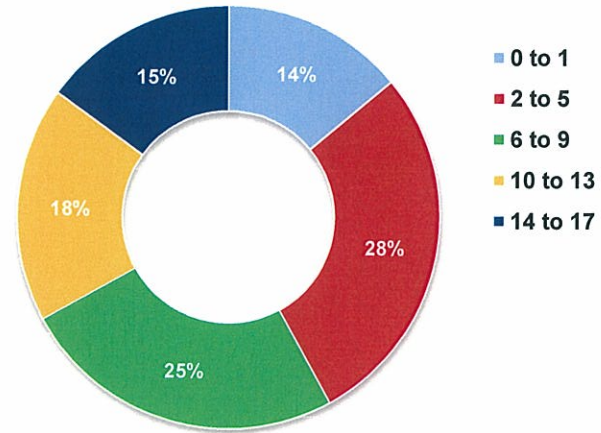
The average length of time in-home cases were open at the end of the quarter was nearly six months (174 days). Supportive services cases were open slightly shorter.

Quick Facts

AGES OF CHILDREN IN IN-HOME CASES

Children ages two to five make up the largest group of children involved in in-home cases at the end of the quarter.

Ages of Children in In-Home Cases

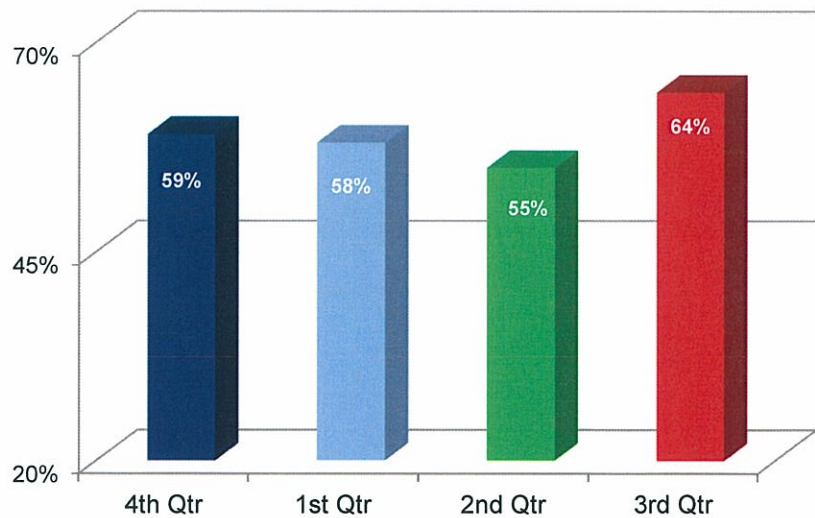


Meeting Agency Policies

MONTHLY VISITS TO IN-HOME CASES

On average, 64 percent of the in-home cases received a face-to-face monthly visit from a caseworker during the quarter.

Required Monthly Visits to In-Home Cases

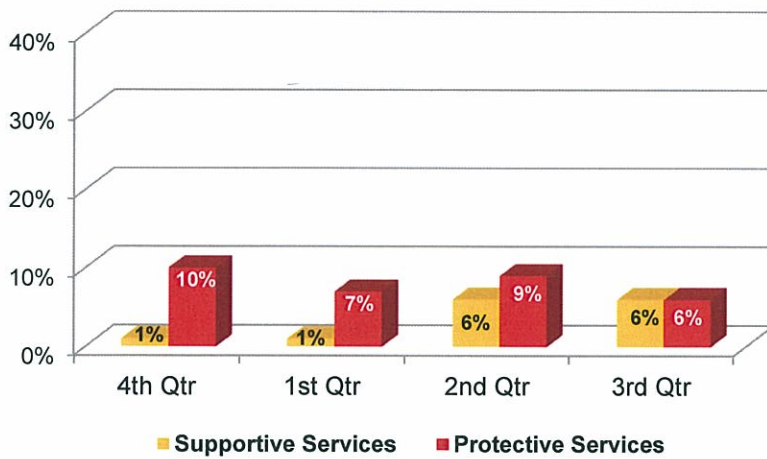


Quick Facts

Benefits to Children and Families

VICTIMIZATION RATE AMONG CHILDREN WHO RECEIVED PROTECTIVE AND SUPPORTIVE SERVICES

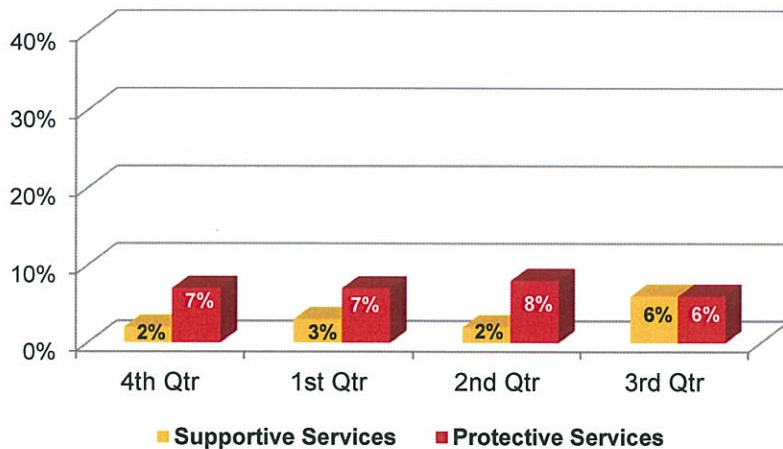
Percentage of Children Receiving Supportive and Protective Services who were Abused or Neglected within One Year of the Initiation of Service



Of the children who began receiving supportive services during the third quarter one year ago, six percent experienced a true report of maltreatment within one year. Of the children who began receiving in-home protective services during the third quarter one year ago, also six percent were involved in a true report within one year (94 percent were not).

RATE OF ENTRY INTO FOSTER CARE AMONG CHILDREN WHO RECEIVED PROTECTIVE AND SUPPORTIVE SERVICES

Percentage of Children Receiving Supportive or Protective Services who Entered Foster Care within One Year of the Initiation of Service



Of the children who began receiving supportive services during the third quarter one year ago, six percent entered foster care within one year of the initiation of those services. Meanwhile, six percent of children who began receiving protective services during the same timeframe entered care within one year.

These services prevent the vast majority of the children from being re-victimized or entering foster care within one year.

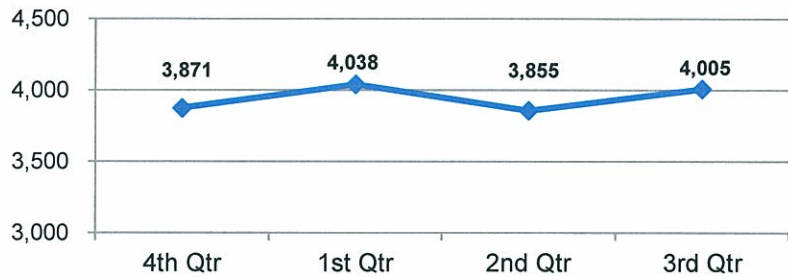
Quick Facts

Volume and Description of Cases

NUMBER OF CHILDREN IN FOSTER CARE

There were 4,005 children in foster care at the end of the third quarter of SFY 2014. This signified a four percent increase from the previous quarter.

Number of Children in Foster Care at End of the Quarter

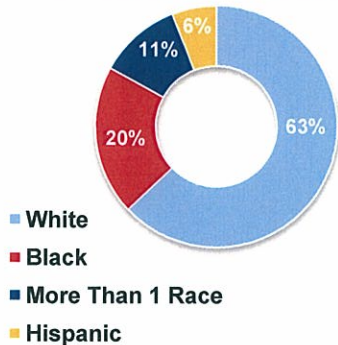


CHARACTERISTICS OF CHILDREN IN FOSTER CARE

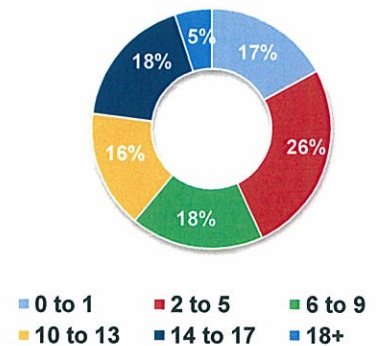
Children two to five years of age (26 percent) represent the largest group of children in care. Sixty-three percent were white and 20 percent were black.

Of the children in foster care at the end of the quarter, 53 percent were male and 47 percent were female.

Race/Ethnicity of Children in Care at the End of Quarter



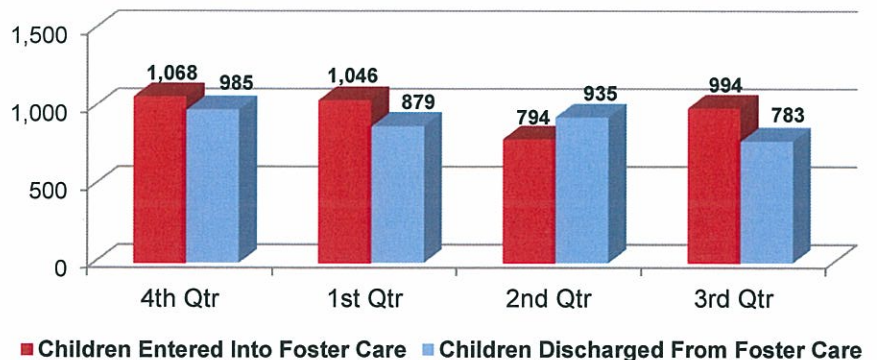
Ages of Children in Foster Care During the Quarter



ADMISSIONS INTO AND DISCHARGES FROM FOSTER CARE

During the third quarter of SFY 2014, more children entered foster care than were discharged.

Number of Admissions Into and Discharges From Foster Care During Quarter



Quick Facts

REASONS FOR CHILDREN'S ENTRY INTO FOSTER CARE

Reasons for Children's Entry Into Foster Care 3rd Quarter SFY 2014

| Placement Reason | Number of Entries | Total |
|----------------------|-------------------|-------|
| Substance Abuse | 529 ¹ | 53% |
| Neglect | 481 | 48% |
| Parent Incarceration | 210 | 21% |
| Physical Abuse | 144 | 14% |
| Inadequate Housing | 77 | 8% |
| Sexual Abuse | 50 | 5% |
| Caretaker Illness | 47 | 5% |
| Abandonment | 24 | 2% |
| Child's Behavior | 19 | 2% |
| Truancy | 10 | 1% |
| Other | 10 | 1% |

A child may have more than one reason for entry.

Substance abuse and neglect were the most prevalent reasons for children entering foster care.

REASONS FOR CHILDREN'S DISCHARGE FROM FOSTER CARE

Reasons for Children's Discharge From Foster Care 3rd Quarter SFY 2014

| Placement Reason | Number of Discharges | Total |
|----------------------|----------------------|-------|
| Relative Custody | 291 | 37% |
| Reunification | 289 | 37% |
| Adoption | 148 | 19% |
| Child Aged Out | 29 | 4% |
| Non-Relative Custody | 21 | 3% |
| Death of Child | 2 | 0% |
| Other | 3 | 0% |

National data indicate that the three most prevalent reasons children leave care are reunification (52%), adoption (20%) and relative care (8%).

Nearly three-fourths of the children who left foster care during the quarter were reunified either with their own family or that of a relative. Arkansas (93 percent) exceeds the national average of 80 percent of the children either going home, to a relative, or to an adoptive home.

¹ These 529 cases of substance abuse include 441 instances of parental drug abuse, 52 instances of parental alcohol abuse, 34 cases of drug abuse by children, and two cases of alcohol abuse by children.

Quick Facts

LENGTH OF STAY IN FOSTER CARE

Of the children in foster care at the end of the quarter, 47 percent have been in care longer than 12 months.

PLACEMENT OF CHILDREN IN CARE

Nearly half of the children in foster care at the end of the quarter resided in foster family homes.

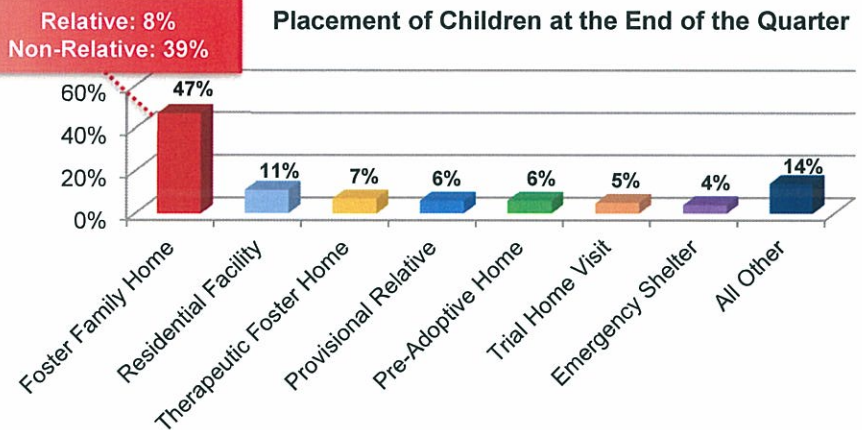
Overall, 71 percent of the children resided in a family-like setting (foster family home, therapeutic foster home, relative care, pre-adoptive home, trial home visit) at the end of the quarter.

PERMANENCY GOAL OF CHILDREN IN CARE

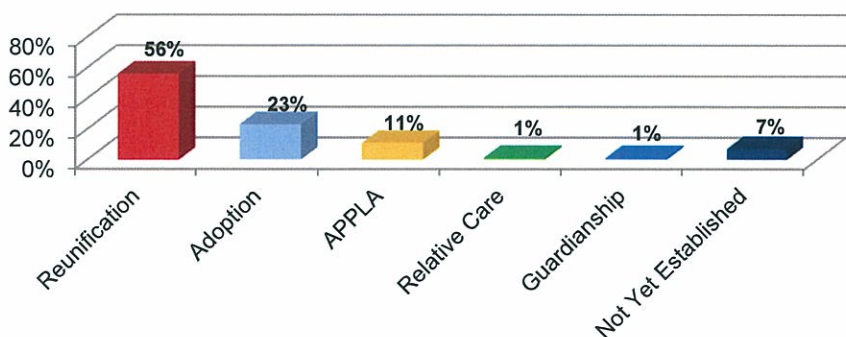
The majority of the children in care at the end of the quarter had a permanency goal of reunification (return home) and almost a quarter had a goal of adoption.

Length of Stay in Foster Care for Children in Care
3rd Quarter SFY 2014

| | Number | Percentage | National ² |
|-------------------|--------------|-------------|-----------------------|
| Less than 30 days | 288 | 7% | 5% |
| 30-90 Days | 488 | 12% | 22% |
| 3-6 Months | 453 | 11% | |
| 6-12 Months | 912 | 23% | 20% |
| 12-24 Months | 927 | 23% | 24% |
| 24-36 Months | 347 | 9% | 11% |
| 36+ Months | 590 | 15% | 18% |
| Total | 4,005 | 100% | 100% |



Permanency Goals of Children in Foster Care at the End of the Quarter



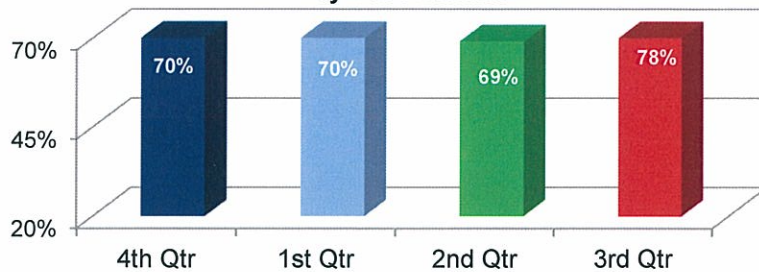
² Adoption and Foster Care Analysis and Reporting System (AFCARS) preliminary data submitted for children in foster care between 10/1/2011 and 9/30/2012 as of November 2013.

Quick Facts

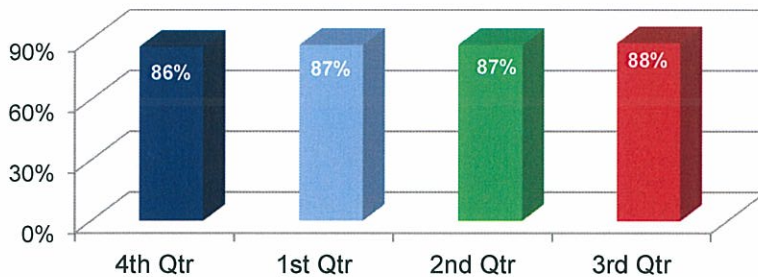
Meeting Agency Policies

MONTHLY VISITS TO FOSTER CHILDREN

Foster Children who Received Monthly Face-to-Face Visits by Caseworkers



Foster Children who Received Monthly Face-to-Face Visits by Any DCFS Staff

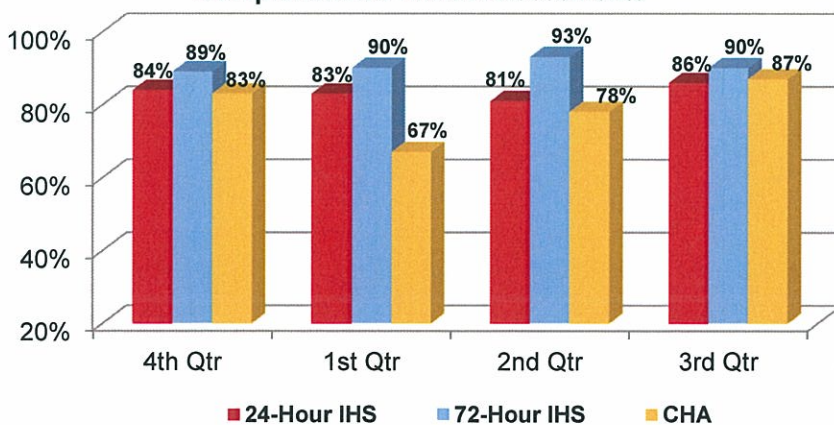


Seventy-eight percent of the foster children statewide received a face-to-face monthly visit from a DCFS caseworker, on average, during the quarter. To ensure safety and well-being, best practice requires foster children to be visited by their caseworkers monthly.

Eighty-eight percent of foster children received a face-to-face monthly visit from *any* DCFS staff member (i.e., regardless of position), on average, during the quarter.

INITIAL HEALTH SCREENINGS AND COMPREHENSIVE HEALTH ASSESSMENTS

24-hour and 72-Hour Initial Health Screening and Comprehensive Health Assessments



When a child enters foster care due to an allegation of severe maltreatment, DCFS must conduct an Initial Health Screening (IHS) within 24 hours. All other incoming foster children require health screenings within 72 hours. These children must also receive a Comprehensive Health Assessment (CHA) within 60 days of entering foster care.

DCFS completed 86 percent of its required 24-hour IHSs, 90 percent of its 72-hour IHSs, and 87 percent of its CHAs on time.

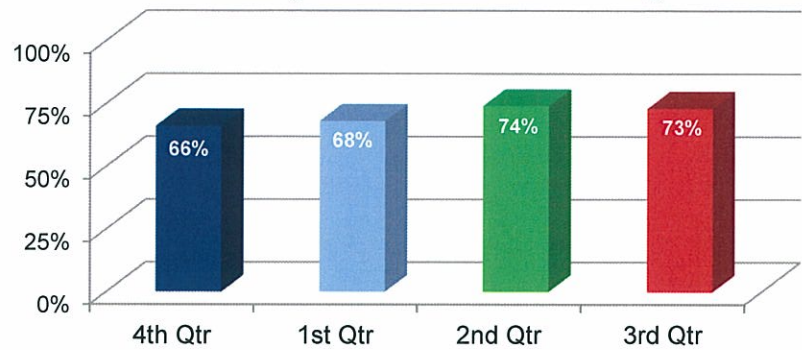
Quick Facts

PERCENTAGE OF SIBLINGS IN PLACEMENT WHO ARE PLACED TOGETHER

At the end of the quarter, 73 percent of the children with siblings in foster care were placed with at least one of their siblings. Of those, 55 percent were placed with all of their siblings.

These figures do not exclude children who were placed separately for valid reasons such as safety issues or court orders.

Siblings in Care who are Placed Together

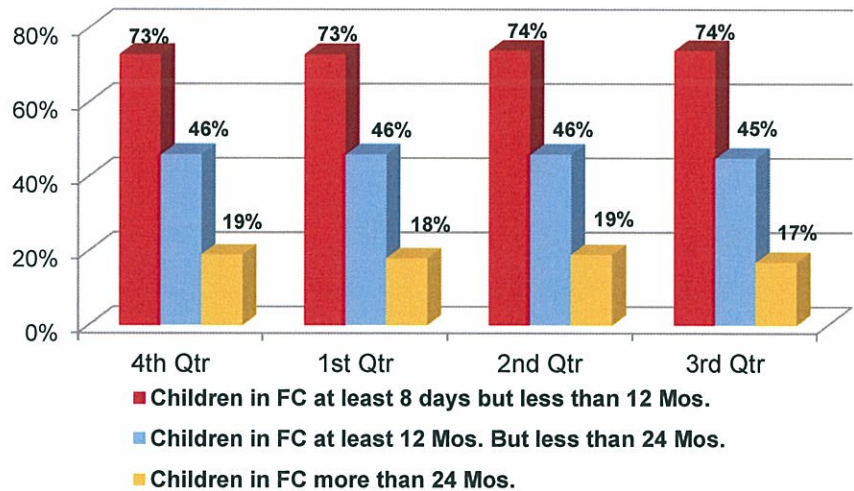


PLACEMENT STABILITY OF CHILDREN IN FOSTER CARE

Placement stability is measured by the percentage of children with two or fewer placements who are in care for varying lengths of time.

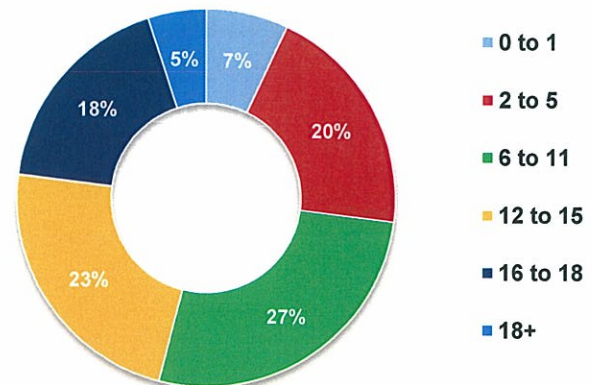
Of those in care for less than 12 months, 74 percent experienced two or fewer placements; the national standard is 86 percent. Of the children in foster care between 12 and 24 months, 45 percent had two or fewer placements; the national standard for this group is 65.4 percent. Finally, of the children in care for over two years, only 17 percent experienced two or fewer placements, with the national standard being 41.8 percent.

Children in Foster Care who have Experienced Two or Fewer Placements



Children six to 11 represent the largest group of children who experienced three or more placements during their stay in foster care.

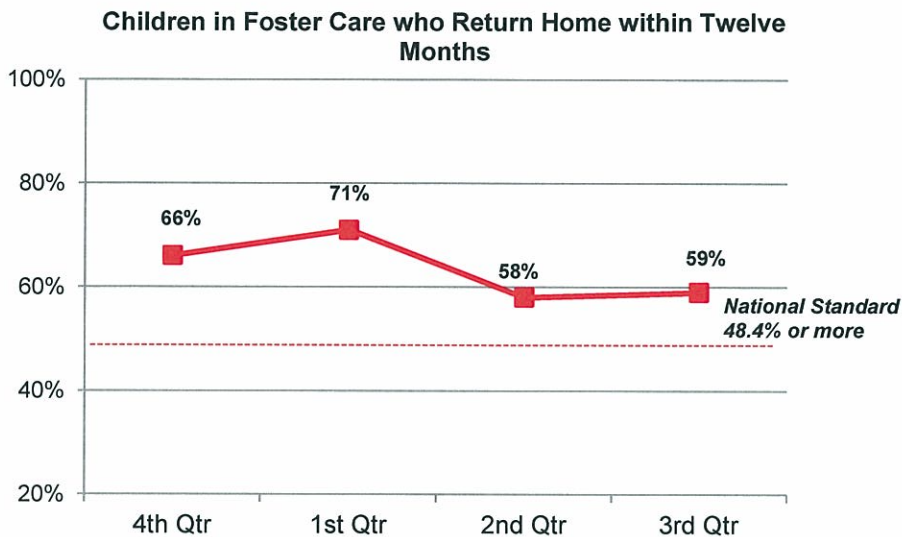
Ages of Children who Experienced Three or More Placements



Quick Facts

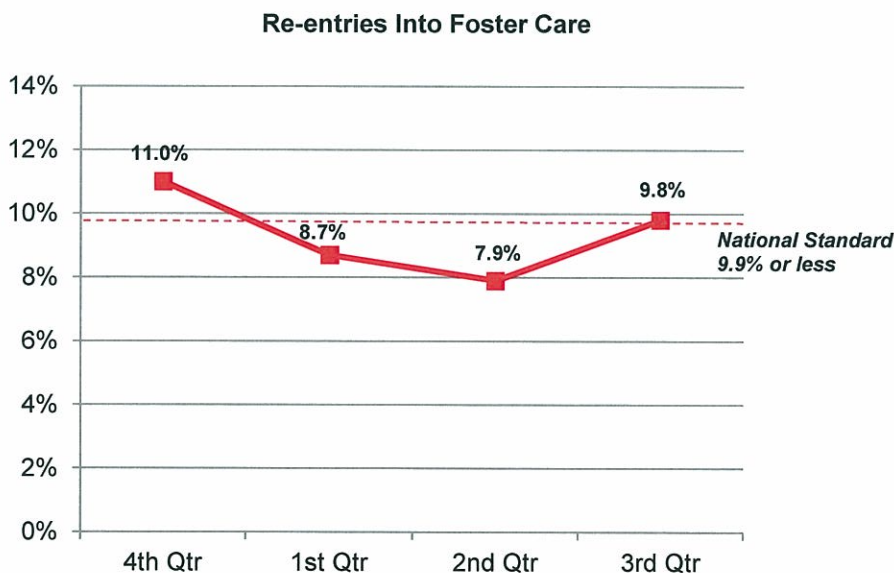
Benefits to Children and Families

CHILDREN IN FOSTER CARE WHO RETURN HOME WITHIN TWELVE MONTHS



Fifty-nine percent of the children who entered foster care during the third quarter one year ago returned to their families within 12 months, exceeding the national standard of 48.4 percent.

PREVENTING CHILDREN'S RE-ENTRY INTO FOSTER CARE



Less than ten percent of the children who were discharged to their families during the third quarter one year ago re-entered foster care within 12 months. The Division meets the national standard of 9.9 percent or less.

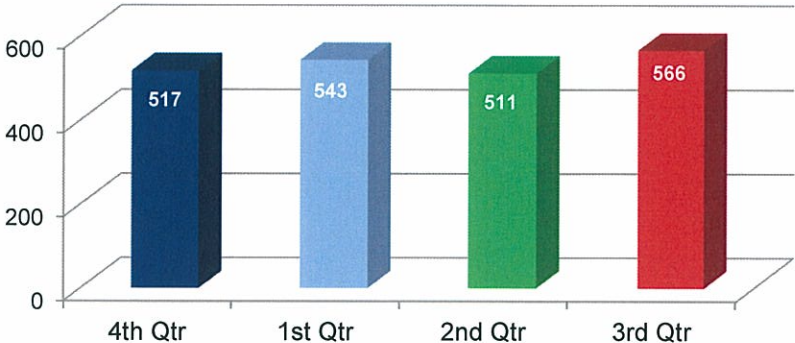
Quick Facts

Volume and Description of Cases

CHILDREN AVAILABLE FOR ADOPTION³

At the end of the quarter, 566 children were available for adoption.

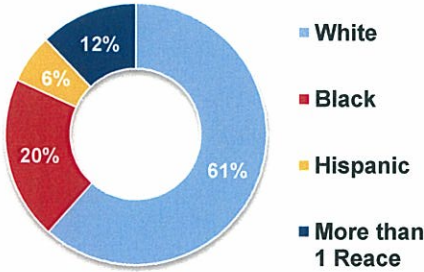
Number of Children Available for Adoption at the End of the Quarter



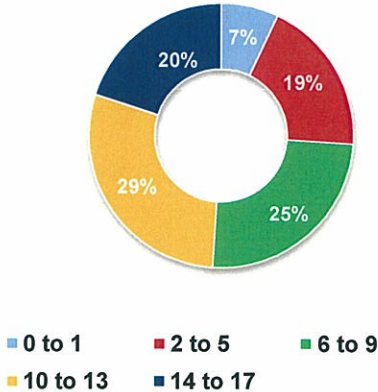
CHARACTERISTICS OF CHILDREN AVAILABLE FOR ADOPTION

Of the available children, 61 percent were white and 20 percent were black. The largest group range in age from ten to thirteen years.

Race/Ethnicity of Children Available for Adoption



Ages of Children Available for Adoption

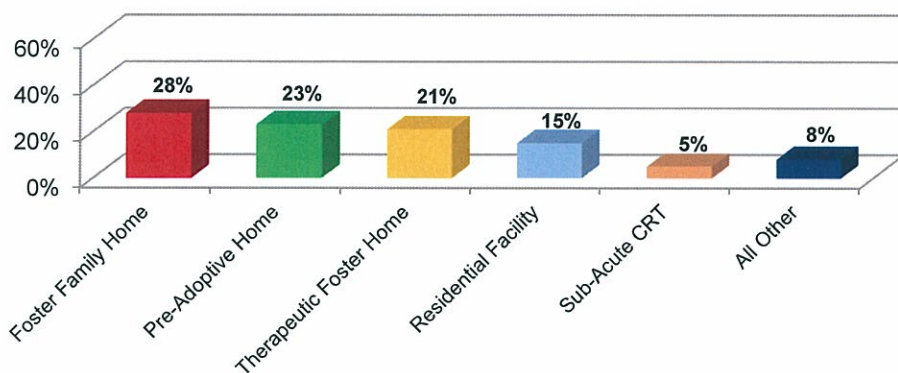


³ Children available for adoption are defined as those who have a termination of parental rights on both parents and a goal of adoption.

Quick Facts

PLACEMENT OF CHILDREN AVAILABLE FOR ADOPTION

Placement of Children Available for Adoption at the End of the Quarter

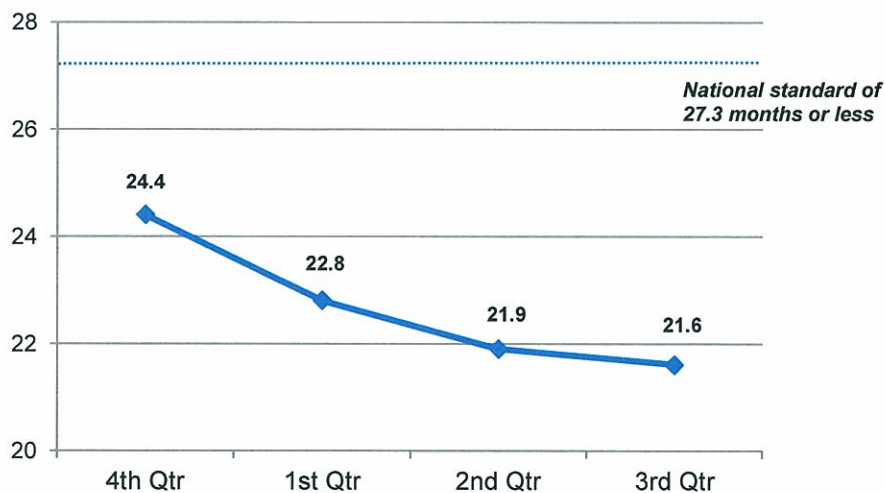


The majority of the children available for adoption at the end of the quarter resided in either a foster family home or a pre-adoptive home.

Meeting Agency Policies

LENGTH OF TIME TO ADOPTION

Length of Time From Entry into Foster Care to Finalization of Adoption (Months)



The median length of time from entry into foster care until finalization of adoption for children whose adoptions were finalized during the third quarter was 21.6 months, five months sooner than the national standard of 27.3 months.

Quick Facts

Benefits to Children and Families

FINALIZED ADOPTIONS

One hundred and fifty-nine adoptions were finalized during the third quarter of SFY 2014.

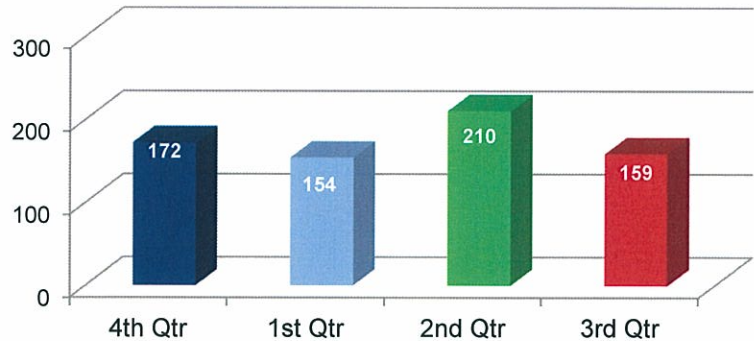
Children ages 2 to 5 were the largest group of children who were adopted during the quarter.

SUBSIDIZED ADOPTIONS

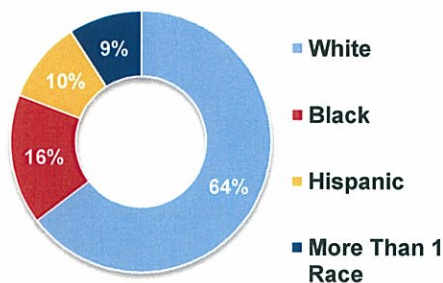
Subsidies are given to children with special needs, defined as:

- Caucasian and over nine
- African-American and at least two
- At least two members of a sibling group
- Children who have severe medical or psychological needs that require ongoing treatment
- Children at high risk for the development of serious physical, mental or emotional conditions documented by a medical professional.

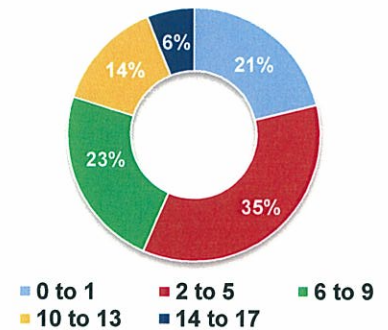
Number of Adoptions Finalized During the Quarter



Race/Ethnicity of Children with Finalized Adoptions



Ages of Children with Finalized Adoption



During the third quarter, 142 children began receiving adoption subsidies. Of those, 123 children were federally-funded subsidies and 19 were state-funded.

During the third quarter, a total of 4,762 children received adoption subsidies.

Caseworkers and Caseloads

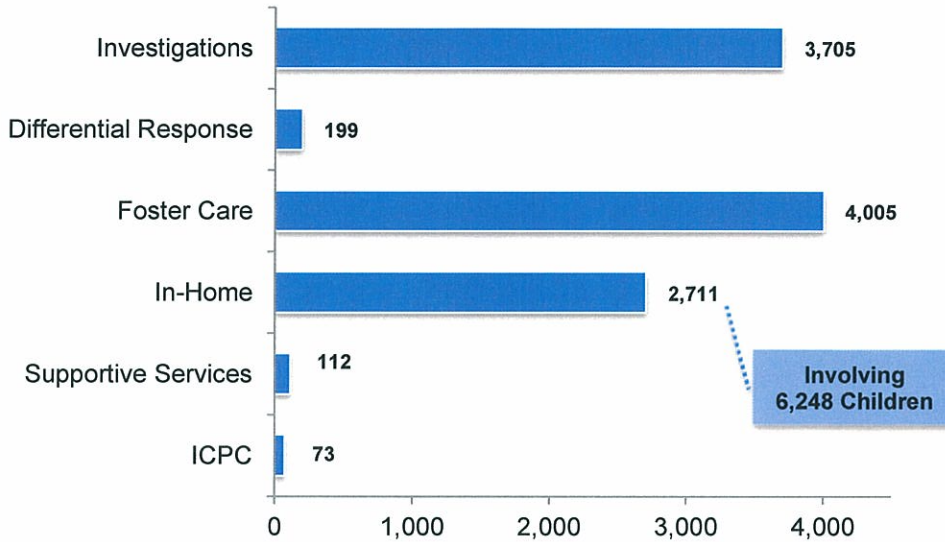
CASELOADS AT THE END OF THE QUARTER

As of the end of the quarter, the Division was responsible for:

- 3,705 investigations of child maltreatment and 199 DR cases,
- 4,005 foster care cases (3,761 excluding adoption cases),
- 2,711 in-home cases, involving 6,248 children,
- 112 supportive services cases and 73 ICPC cases.

This is while the Division was equipped with 360 family service workers, which on average includes 90 staff dedicated to investigations full time and another 34 staff who conduct investigations while also carrying other cases.

Types of Cases at the End of the Quarter



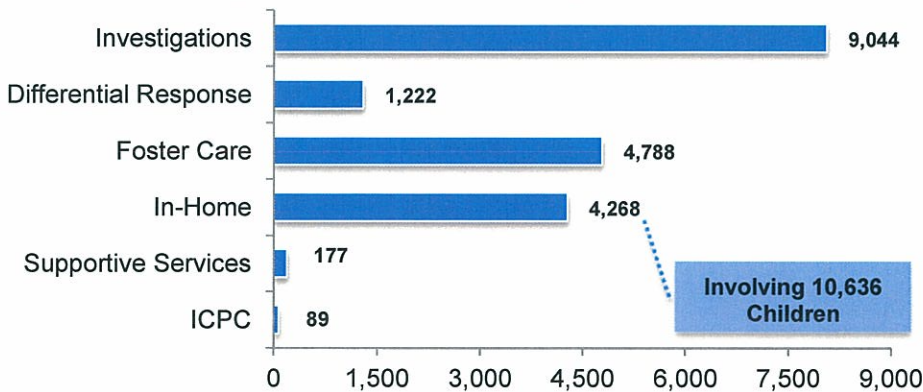
One foster care case is equal to one child in care; one in-home or supportive services case constitutes an entire family, many of which have multiple children.

CASELOADS HANDLED DURING THE QUARTER

This shows the number of cases that cycled through the system anytime during the quarter (as opposed to those open at the end of the quarter, described above).

The Division oversaw 9,044 investigations; 4,788 children in foster care; 4,268 in-home protective services cases; 1,222 DR cases; 177 supportive services cases; and 89 interstate compact for the placement of children (ICPC) cases.

Types of Cases Served During the Quarter



Quick Facts

AVERAGE CASELOAD

The average caseload statewide stood at just over 29 cases per worker at the end of the quarter. This exceeds standards of about 15 cases per worker set by the Child Welfare League of America.

The average caseload for each county as of March 31, 2014 is presented in Appendix E.

Foster Homes

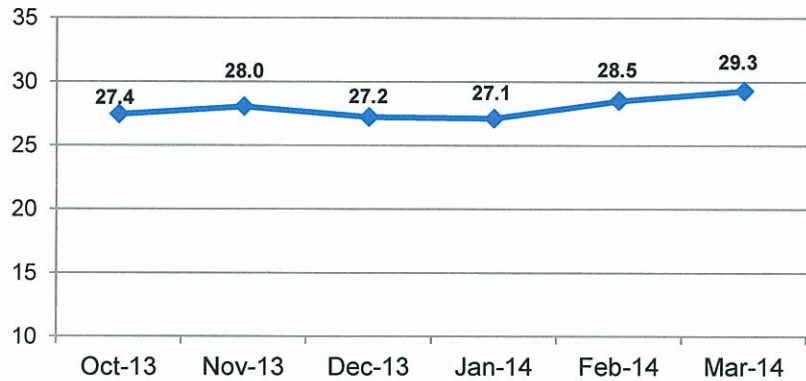
FOSTER HOMES AND BEDS

There were 1,241 licensed foster family homes open at the end of the third quarter statewide.

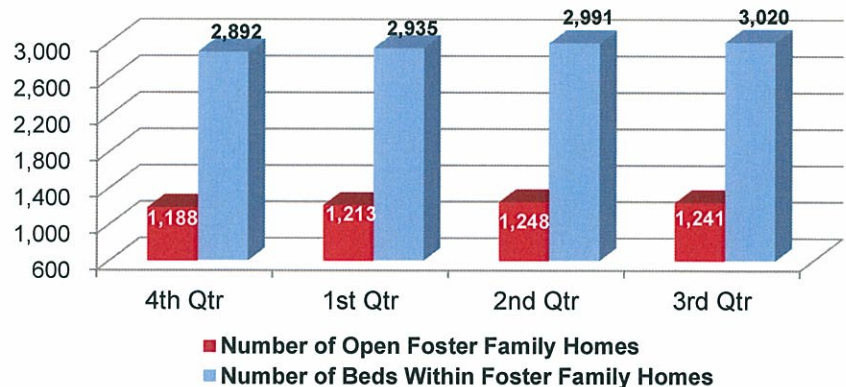
During the quarter 161 new foster homes were opened and 161 were closed.

Appendix F displays the closure reasons for the 161 foster homes that closed during the quarter.

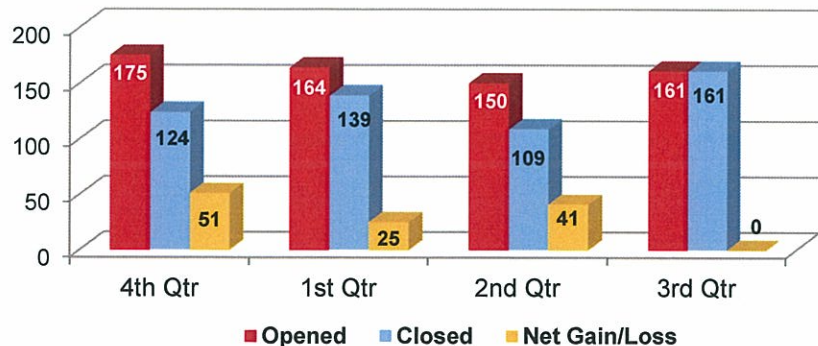
Average Caseload at the End of Month



Number of Foster Homes and Beds at the End of Quarter



Number of Foster Family Homes Opened and Closed During the Quarter



Quick Facts

RATIO OF FOSTER HOME BEDS TO FOSTER CHILDREN

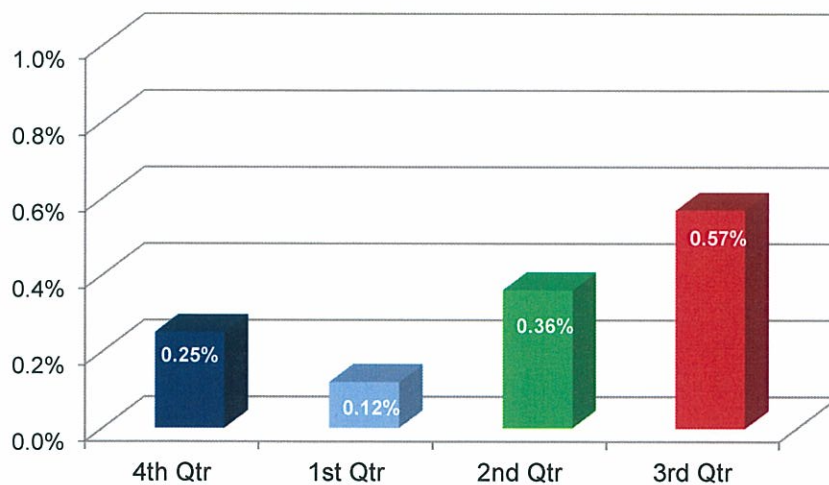
Foster Bed to Foster Child Ratio



The ratio of licensed foster home beds to children in foster care was less than one (0.75) at the end of the quarter, giving workers few choices of where to place children.

PERCENTAGE OF FOSTER FAMILIES WITH TRUE REPORTS OF MALTREATMENT

Percentage of Foster Families with True Reports of Maltreatment



Eight reports in which foster parents were identified as alleged offenders were determined to be true during the quarter. Based on the 1,392 foster homes active during that period, the percentage of foster families with a true report of maltreatment was 0.57 percent.

Appendix G provides more detail on maltreatment reports concerning foster homes.

Appendix A: Breakdown of Child Maltreatment Reports Received During the Quarter and Substantiation Rates of Maltreatment Investigations⁴

| | DCFS | | | | CACD | | |
|---------------------|-----------------------------------|----------------------------------------------|---------------------|--------------|----------------------------------------------|---------------------|--------------|
| | Total Assessments Assigned for DR | Total Assessments Assigned for Investigation | True Investigations | Percent True | Total Assessments Assigned for Investigation | True Investigations | Percent True |
| Fourth Quarter 2013 | 605 | 6,701 <i>6688 Closed</i> | 1,476 | 22% | 1,341 <i>1310 Closed</i> | 522 | 40% |
| First Quarter 2014 | 643 | 5,848 <i>5791 Closed</i> | 1,327 | 23% | 1,331 <i>1263 Closed</i> | 558 | 44% |
| Second Quarter 2014 | 1,062 | 6,214 <i>5,453 Closed</i> | 1,232 | 23% | 1,318 <i>1,271 Closed</i> | 539 | 42% |
| Third Quarter 2014 | 1,008 | 5,364 <i>4,887 Closed</i> | 1,134 | 23% | 1,167 <i>1,113 Closed</i> | 468 | 42% |

⁴ The data cited in this appendix run two months behind the referenced quarter (e.g., the third quarter refers to 11/1/2013 through 1/31/2014); as a result, the numbers cited in this appendix differ from those cited throughout the report which considers the actual quarter. This is because investigations have a 45-day completion timeframe and this allows enough time to pass to measure the disposition of the investigations. An investigation is excluded from the calculation of the substantiation rate in the event that it has not yet been closed (and thus a disposition has not yet been rendered).

Appendix B: Summary of Reports Involving Child Fatality

True Fatality Reports

| Child | County | Age | Race | Gender | Date of Death | Allegations or Preliminary Cause of Death | Placement at the Time of Incident | Relationship of Alleged Offender to the Child | Agency Conducting the Investigation | Legal Action By the Department | Services Provided Prior to the Incident | Services Provided After the Incident |
|-----------------|-----------|-----|-------|--------|---------------|-------------------------------------------|-----------------------------------|-----------------------------------------------|-------------------------------------|--------------------------------|-----------------------------------------|--------------------------------------|
| Logan Carter | Craighead | 3 | White | Male | 1/11/2014 | Abuse | In-Home | Family Member | CACD | None | None | PS Case |
| Bryce Griffin | Prairie | 5 | White | Male | 2/6/2014 | Neglect | In-Home | Family Member | CACD | None | Prior Investigations | None |
| Anastasia Paige | Phillips | 2 | Black | Female | 2/27/2014 | Neglect | In-Home | Family Member | CACD | None | Prior Investigations | PS Case |
| Colin Stell | Lonoke | <1 | White | Male | 3/13/2014 | Neglect | In-Home | Family Member | CACD | None | None | FC Case |
| Hailey Bise | Benton | <1 | White | Female | 1/2/2014 | Neglect | In-Home | Family Member | CACD | None | Prior PS Case | PS Case |

Unsubstantiated Fatality Reports

There were no unsubstantiated child fatality reports during the third quarter of SFY 2014.

Pending Fatality Reports

| Child | County | Age | Race | Gender | Date of Death | Allegations or Preliminary Cause of Death | Placement at the Time of Incident | Relationship of Alleged Offender to the Child | Agency Conducting the Investigation | Legal Action By the Department | Services Provided Prior to the Incident | Services Provided After the Incident |
|-------------|-----------|-----|-------|--------|---------------|-------------------------------------------|-----------------------------------|-----------------------------------------------|-------------------------------------|--------------------------------|-----------------------------------------|--------------------------------------|
| Jordan Mott | Sebastian | <1 | White | Male | 1/9/2014 | Neglect | In-Home | Foster Parents | CACD | None | FC Case | FC Case |
| Layne Hice | Greene | <1 | White | Male | 2/9/2014 | Neglect | In-Home | Family Member | CACD | None | Prior Investigations | FC Case |

Appendix C: Summary of Reports Involving Near Child Fatality

True Near Fatality Reports

There were no true near child fatality reports during the third quarter of SFY 2014.

Unsubstantiated Near Fatality Reports

There were no unsubstantiated near child fatality reports during the third quarter of SFY 2014.

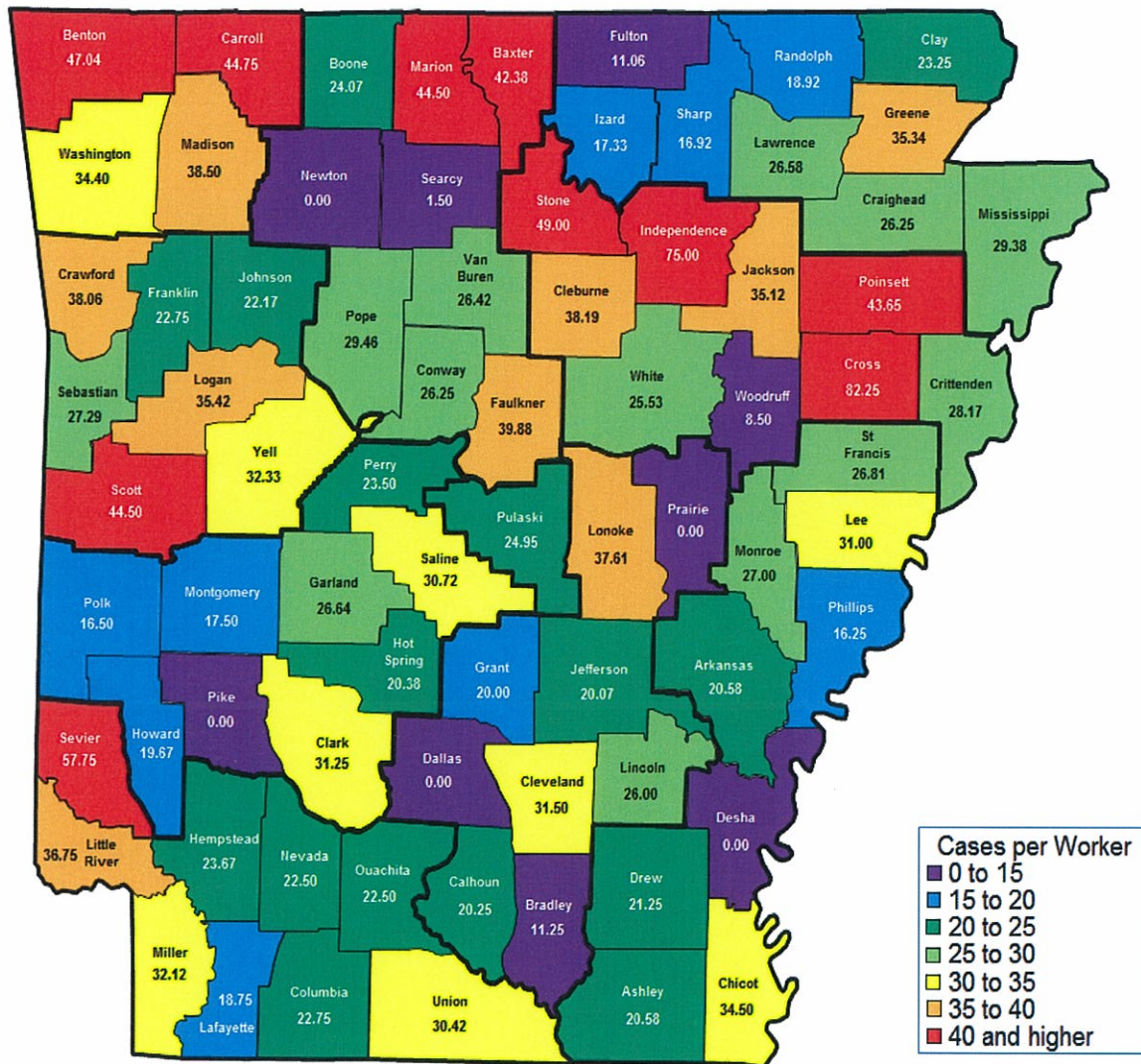
Pending Near Fatality Reports

There were no pending near child fatality reports during the third quarter of SFY 2014.

Appendix D: Fatalities of Children in Foster Care Who Did Not Receive a Maltreatment Investigation

| Child | County | Age | Race | Gender | Date of Death | Preliminary Cause of Death | Placement at the Time of Incident | Legal Action By the Department | Services Provided Prior to the Incident | Services Provided After the Incident |
|----------|-----------|-----|-------|--------|---------------|----------------------------|-----------------------------------|--------------------------------|-----------------------------------------|--------------------------------------|
| Child #1 | White | 19 | White | Male | 1/19/2014 | Pneumonia | Foster Care | None | Foster Care | None |
| Child #2 | Jefferson | 19 | Black | Male | 3/31/2014 | Homicide | Foster Care | None | Foster Care | None |

Appendix E: Average Caseload as of March 31, 2014, by County



- Due to the fact that Newton, Prairie, Desha, Dallas, and Pike counties did not have any family service workers at the time of this report, their cases were assigned to workers from other counties.

Appendix F: Foster Home Closure Reasons

| Area | County | Total | DHS Request | Family No Longer Interested | Non-Compliance/Failed Re-Evaluation | Other | Provider End Dated | Provider Request | Provider/Services No Longer Needed | Death of Parent | Founded Abuse/Neglect |
|------|---------------------------|-----------|-------------|-----------------------------|-------------------------------------|----------|--------------------|------------------|------------------------------------|-----------------|-----------------------|
| 1 | Benton (Bentonville) | 19 | 0 | 1 | 1 | 1 | 8 | 8 | 0 | 0 | 0 |
| 1 | Carroll (Berryville) | 2 | 0 | 0 | 0 | 0 | 1 | 1 | 0 | 0 | 0 |
| 1 | Madison (Huntsville) | 0 | 0 | 0 | 0 | 0 | 0 | 0 | 0 | 0 | 0 |
| 1 | Washington (Fayetteville) | 9 | 0 | 1 | 0 | 1 | 5 | 2 | 0 | 0 | 0 |
| | Area Total | 30 | 0 | 2 | 1 | 2 | 14 | 11 | 0 | 0 | 0 |
| 2 | Crawford (Van Buren) | 11 | 1 | 0 | 0 | 3 | 4 | 3 | 0 | 0 | 0 |
| 2 | Franklin (Ozark) | 4 | 1 | 0 | 0 | 0 | 2 | 1 | 0 | 0 | 0 |
| 2 | Johnson (Clarksville) | 2 | 1 | 0 | 0 | 0 | 1 | 0 | 0 | 0 | 0 |
| 2 | Logan (Booneville) | 0 | 0 | 0 | 0 | 0 | 0 | 0 | 0 | 0 | 0 |
| 2 | Logan (Paris) | 0 | 0 | 0 | 0 | 0 | 0 | 0 | 0 | 0 | 0 |
| 2 | Scott (Waldron) | 3 | 1 | 0 | 0 | 1 | 0 | 1 | 0 | 0 | 0 |
| 2 | Sebastian (Fort Smith) | 9 | 4 | 0 | 0 | 3 | 0 | 2 | 0 | 0 | 0 |
| 2 | Yell (Danville) | 1 | 1 | 0 | 0 | 0 | 0 | 0 | 0 | 0 | 0 |
| | Area Total | 30 | 9 | 0 | 0 | 7 | 7 | 7 | 0 | 0 | 0 |
| 3 | Clark (Arkadelphia) | 2 | 0 | 0 | 0 | 1 | 1 | 0 | 0 | 0 | 0 |
| 3 | Garland (Hot Springs) | 5 | 1 | 0 | 0 | 0 | 3 | 0 | 1 | 0 | 0 |
| 3 | Hot Spring (Malvern) | 2 | 0 | 0 | 0 | 0 | 0 | 1 | 1 | 0 | 0 |
| 3 | Howard (Nashville) | 0 | 0 | 0 | 0 | 0 | 0 | 0 | 0 | 0 | 0 |
| 3 | Montgomery (Mount Ida) | 0 | 0 | 0 | 0 | 0 | 0 | 0 | 0 | 0 | 0 |
| 3 | Perry (Perryville) | 0 | 0 | 0 | 0 | 0 | 0 | 0 | 0 | 0 | 0 |
| 3 | Pike (Murfreesboro) | 1 | 0 | 0 | 0 | 1 | 0 | 0 | 0 | 0 | 0 |
| 3 | Polk (Mena) | 0 | 0 | 0 | 0 | 0 | 0 | 0 | 0 | 0 | 0 |
| 3 | Saline (Benton) | 10 | 1 | 0 | 0 | 2 | 5 | 1 | 1 | 0 | 0 |
| | Area Total | 20 | 2 | 0 | 0 | 4 | 9 | 2 | 3 | 0 | 0 |
| 4 | Columbia (Magnolia) | 1 | 0 | 1 | 0 | 0 | 0 | 0 | 0 | 0 | 0 |
| 4 | Hempstead (Hope) | 0 | 0 | 0 | 0 | 0 | 0 | 0 | 0 | 0 | 0 |
| 4 | Lafayette (Lewistown) | 1 | 0 | 0 | 0 | 0 | 1 | 0 | 0 | 0 | 0 |
| 4 | Little River (Ashdown) | 0 | 0 | 0 | 0 | 0 | 0 | 0 | 0 | 0 | 0 |
| 4 | Miller (Texarkana) | 1 | 0 | 0 | 0 | 0 | 1 | 0 | 0 | 0 | 0 |
| 4 | Nevada (Prescott) | 0 | 0 | 0 | 0 | 0 | 0 | 0 | 0 | 0 | 0 |
| 4 | Ouachita (Camden) | 0 | 0 | 0 | 0 | 0 | 0 | 0 | 0 | 0 | 0 |
| 4 | Sevier (DeQueen) | 0 | 0 | 0 | 0 | 0 | 0 | 0 | 0 | 0 | 0 |
| 4 | Union (El Dorado) | 2 | 0 | 2 | 0 | 0 | 0 | 0 | 0 | 0 | 0 |
| | Area Total | 5 | 0 | 3 | 0 | 0 | 2 | 0 | 0 | 0 | 0 |
| 5 | Baxter (Mountain Home) | 1 | 0 | 0 | 0 | 0 | 1 | 0 | 0 | 0 | 0 |
| 5 | Boone (Harrison) | 0 | 0 | 0 | 0 | 0 | 0 | 0 | 0 | 0 | 0 |
| 5 | Conway (Morrilton) | 1 | 0 | 0 | 0 | 0 | 1 | 0 | 0 | 0 | 0 |
| 5 | Faulkner (Conway) | 2 | 0 | 0 | 0 | 1 | 1 | 0 | 0 | 0 | 0 |
| 5 | Marion (Yellville) | 0 | 0 | 0 | 0 | 0 | 0 | 0 | 0 | 0 | 0 |
| 5 | Newton (Jasper) | 0 | 0 | 0 | 0 | 0 | 0 | 0 | 0 | 0 | 0 |
| 5 | Pope (Russellville) | 4 | 1 | 0 | 0 | 1 | 1 | 1 | 0 | 0 | 0 |
| 5 | Searcy (Marshall) | 0 | 0 | 0 | 0 | 0 | 0 | 0 | 0 | 0 | 0 |
| 5 | Van Buren (Clinton) | 1 | 0 | 0 | 0 | 0 | 0 | 0 | 1 | 0 | 0 |
| | Area Total | 9 | 1 | 0 | 0 | 2 | 4 | 1 | 1 | 0 | 0 |
| 6 | Pulaski | 0 | 0 | 0 | 0 | 0 | 0 | 0 | 0 | 0 | 0 |
| 6 | Pulaski (East) | 1 | 0 | 1 | 0 | 0 | 0 | 0 | 0 | 0 | 0 |
| 6 | Pulaski (Jacksonville) | 1 | 0 | 0 | 0 | 0 | 0 | 1 | 0 | 0 | 0 |
| 6 | Pulaski (North) | 3 | 0 | 0 | 0 | 0 | 2 | 1 | 0 | 0 | 0 |
| 6 | Pulaski (South) | 16 | 0 | 0 | 0 | 1 | 6 | 9 | 0 | 0 | 0 |
| 6 | Pulaski (Southwest) | 1 | 0 | 0 | 0 | 0 | 1 | 0 | 0 | 0 | 0 |
| | Area Total | 22 | 0 | 1 | 0 | 1 | 9 | 11 | 0 | 0 | 0 |

| Area | County | Total | DHS Request | Family No Longer Interested | Non-Compliance/Failed Re-Evaluation | Other | Provider End Dated | Provider Request | Provider/Services No Longer Needed | Death of Parent | Founded Abuse/Neglect |
|------|----------------------------|------------|-------------|-----------------------------|-------------------------------------|-----------|--------------------|------------------|------------------------------------|-----------------|-----------------------|
| 7 | Bradley (Warren) | 0 | 0 | 0 | 0 | 0 | 0 | 0 | 0 | 0 | 0 |
| 7 | Calhoun (Hampton) | 2 | 0 | 0 | 0 | 0 | 1 | 1 | 0 | 0 | 0 |
| 7 | Cleveland (Rison) | 0 | 0 | 0 | 0 | 0 | 0 | 0 | 0 | 0 | 0 |
| 7 | Dallas (Fordyce) | 0 | 0 | 0 | 0 | 0 | 0 | 0 | 0 | 0 | 0 |
| 7 | Grant (Sheridan) | 1 | 0 | 0 | 0 | 0 | 1 | 0 | 0 | 0 | 0 |
| 7 | Jefferson (Pine Bluff) | 3 | 0 | 0 | 0 | 0 | 1 | 1 | 1 | 0 | 0 |
| 7 | Lincoln (Star City) | 2 | 0 | 0 | 0 | 0 | 2 | 0 | 0 | 0 | 0 |
| 7 | Lonoke (Lonoke) | 2 | 0 | 0 | 0 | 0 | 1 | 1 | 0 | 0 | 0 |
| 7 | Prairie (DeValls Bluff) | 0 | 0 | 0 | 0 | 0 | 0 | 0 | 0 | 0 | 0 |
| | Area Total | 10 | 0 | 0 | 0 | 0 | 6 | 3 | 1 | 0 | 0 |
| 8 | Clay (Hggott & Corning) | 1 | 0 | 0 | 0 | 0 | 1 | 0 | 0 | 0 | 0 |
| 8 | Craighead (Jonesboro) | 2 | 0 | 0 | 0 | 1 | 1 | 0 | 0 | 0 | 0 |
| 8 | Fulton (Salem) | 0 | 0 | 0 | 0 | 0 | 0 | 0 | 0 | 0 | 0 |
| 8 | Greene (Paragould) | 5 | 1 | 0 | 0 | 0 | 2 | 2 | 0 | 0 | 0 |
| 8 | Izard (Melbourne) | 1 | 0 | 0 | 0 | 0 | 0 | 1 | 0 | 0 | 0 |
| 8 | Lawrence (Walnut Ridge) | 0 | 0 | 0 | 0 | 0 | 0 | 0 | 0 | 0 | 0 |
| 8 | Mississippi (Blytheville) | 2 | 0 | 0 | 0 | 0 | 0 | 1 | 0 | 0 | 1 |
| 8 | Mississippi (Osceola) | 0 | 0 | 0 | 0 | 0 | 0 | 0 | 0 | 0 | 0 |
| 8 | Randolph (Pocahontas) | 2 | 1 | 0 | 0 | 0 | 1 | 0 | 0 | 0 | 0 |
| 8 | Sharp (Ash Flat) | 0 | 0 | 0 | 0 | 0 | 0 | 0 | 0 | 0 | 0 |
| | Area Total | 13 | 2 | 0 | 0 | 1 | 5 | 4 | 0 | 0 | 1 |
| 9 | Woodruff (Augusta) | 0 | 0 | 0 | 0 | 0 | 0 | 0 | 0 | 0 | 0 |
| 9 | Cleburne (Heber Springs) | 2 | 0 | 0 | 0 | 0 | 1 | 1 | 0 | 0 | 0 |
| 9 | Crittenden (West Memphis) | 2 | 0 | 0 | 0 | 0 | 0 | 2 | 0 | 0 | 0 |
| 9 | Cross (Wynne) | 0 | 0 | 0 | 0 | 0 | 0 | 0 | 0 | 0 | 0 |
| 9 | Independence (Batesville) | 4 | 1 | 0 | 0 | 0 | 2 | 1 | 0 | 0 | 0 |
| 9 | Jackson (New port) | 1 | 0 | 0 | 0 | 0 | 1 | 0 | 0 | 0 | 0 |
| 9 | Poinsett (Harrisburg) | 0 | 0 | 0 | 0 | 0 | 0 | 0 | 0 | 0 | 0 |
| 9 | Stone (Mountain View) | 0 | 0 | 0 | 0 | 0 | 0 | 0 | 0 | 0 | 0 |
| 9 | White (Searcy) | 3 | 0 | 0 | 0 | 0 | 3 | 0 | 0 | 0 | 0 |
| | Area Total | 12 | 1 | 0 | 0 | 0 | 7 | 4 | 0 | 0 | 0 |
| 10 | Arkansas (Dewitt) | 0 | 0 | 0 | 0 | 0 | 0 | 0 | 0 | 0 | 0 |
| 10 | Arkansas (Stuttgart) | 0 | 0 | 0 | 0 | 0 | 0 | 0 | 0 | 0 | 0 |
| 10 | Ashley (Hamburg) | 0 | 0 | 0 | 0 | 0 | 0 | 0 | 0 | 0 | 0 |
| 10 | Chicot (Lake Village) | 0 | 0 | 0 | 0 | 0 | 0 | 0 | 0 | 0 | 0 |
| 10 | Desha (McGehee) | 0 | 0 | 0 | 0 | 0 | 0 | 0 | 0 | 0 | 0 |
| 10 | Drew (Monticello) | 0 | 0 | 0 | 0 | 0 | 0 | 0 | 0 | 0 | 0 |
| 10 | Lee (Marianna) | 1 | 0 | 0 | 0 | 0 | 1 | 0 | 0 | 0 | 0 |
| 10 | Monroe (Brinkley) | 0 | 0 | 0 | 0 | 0 | 0 | 0 | 0 | 0 | 0 |
| 10 | Monroe (Clarendon) | 0 | 0 | 0 | 0 | 0 | 0 | 0 | 0 | 0 | 0 |
| 10 | Phillips (Helena) | 2 | 0 | 1 | 0 | 0 | 0 | 1 | 0 | 0 | 0 |
| 10 | St. Francis (Forrest City) | 0 | 0 | 0 | 0 | 0 | 0 | 0 | 0 | 0 | 0 |
| | Area Total | 3 | 0 | 1 | 0 | 0 | 1 | 1 | 0 | 0 | 0 |
| 99 | Out of State | 7 | 0 | 1 | 0 | 0 | 6 | 0 | 0 | 0 | 0 |
| | Statewide Total | 161 | 15 | 8 | 1 | 17 | 70 | 44 | 5 | 0 | 1 |

Appendix G: Summary of Foster Care Maltreatment Reports

Characteristics of Children in Foster Care Involved in Allegations of Maltreatment, 3rd Quarter SFY 2014

Ninety-four reports of alleged maltreatment, involving 113 children in foster care, were received by the hotline during the third quarter of SFY 2014.

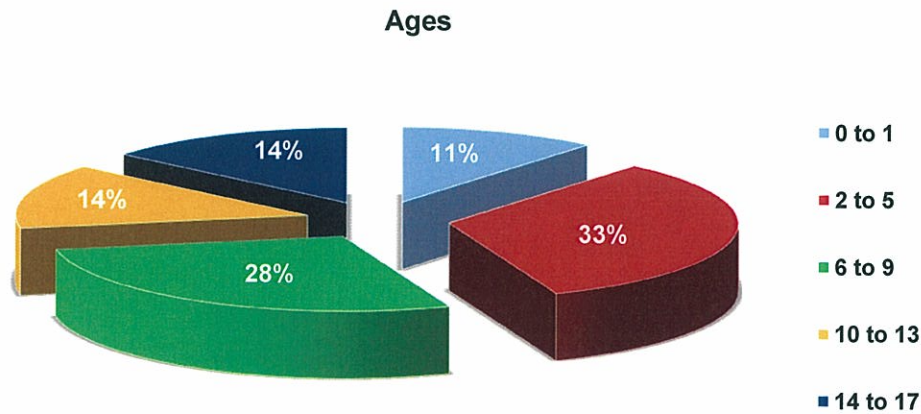
In 29 reports involving 40 children, foster parents⁵ were identified as the alleged offenders. As shown by the following chart, eight of those reports were found to be true and all eight homes were subsequently closed.

**Foster Home Maltreatment Reports
3rd Quarter SFY 2014**

| True | Unsubstantiated | Pending |
|------|-----------------|---------|
| 8 | 21 | 0 |

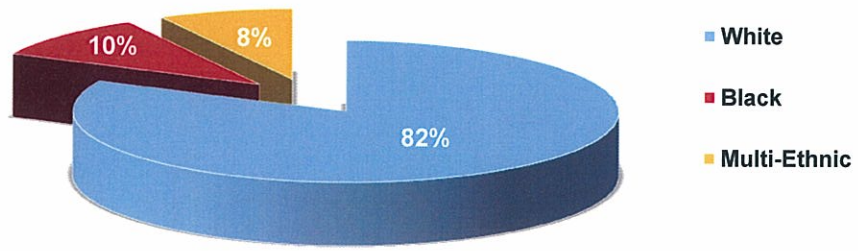
All allegations of maltreatment concerning foster homes are investigated by the Crimes Against Children Division (CACD) of the Arkansas State Police. DCFS staff do not actively participate in the investigation of these reports. Allegations of maltreatment regarding foster homes require the agency to assess the safety of all children residing in the home.

The following charts describe the characteristics of the 40 foster children involved in allegations of maltreatment—with foster parents as the alleged offenders.

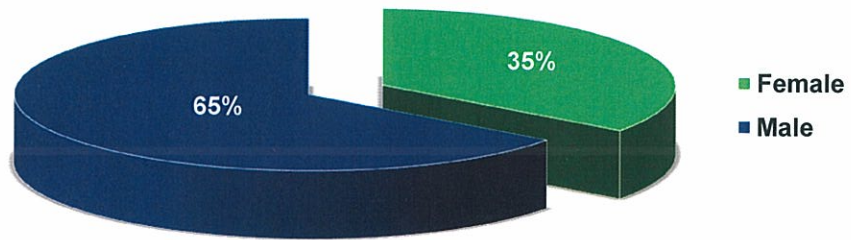


⁵ This includes foster family homes and therapeutic foster homes

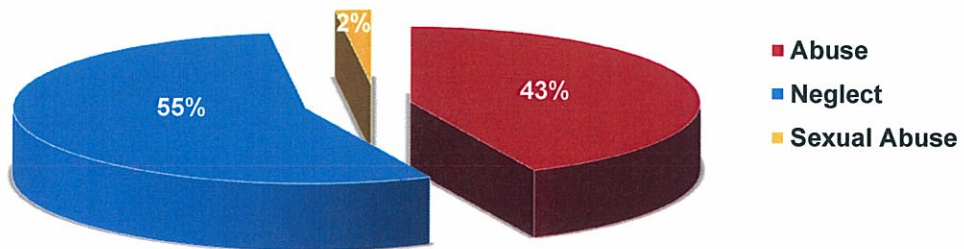
Race/Ethnicity



Gender



Allegation



County of Foster Homes in Which Alleged Maltreatment Occurred

| County | Number of Children Involved in Maltreatment Report | County | Number of Children Involved in Maltreatment Report |
|---------------|-----------------------------------------------------------|---------------|-----------------------------------------------------------|
| Washington | 7 | Drew | 1 |
| Pulaski | 6 | Greene | 1 |
| St. Francis | 3 | Howard | 1 |
| Sebastian | 3 | Jefferson | 1 |
| Columbia | 3 | Lee | 1 |
| Conway | 3 | Ouachita | 1 |
| Benton | 3 | Phillips | 1 |
| Mississippi | 1 | Poinsett | 1 |
| Carroll | 1 | Johnson | 1 |
| Craighead | 1 | | |