

# Peer Integration and Expansion

Division of Aging, Adult, and Behavioral Health Services



---

[humanservices.arkansas.gov](http://humanservices.arkansas.gov)

---

# Peer Recovery Support

## The Arkansas Model

- In 2017 DHS hired Peer Recovery Coordinator Jimmy McGill and sent him across the country to review peer programs.
- Before 2017, peer recovery was virtually non-existent in the state of Arkansas.
- Peers were only working in treatment centers where a lack of understanding of the unique role of peers led to inappropriate job descriptions and an underutilization of Peers.
- Based on the review of programs, the Georgia Model was deemed to be the most appropriate to use in Arkansas.
- The Georgia Model, which was developed by the Appalachian consulting group and was considered the gold standard, was being used by up to 40 states.
- The Georgia Model was modified to include both substance use and mental health and graduated levels of training and certification becoming known as the Arkansas Model.

# Peer Recovery Support

## The Arkansas Model

- Since the 2019 the Arkansas Model has gained national attention and is considered to be the Diamond Standard.
- The Arkansas Model is the only one in the nation offering a career ladder with workforce development.
- The initial phase of development in Arkansas concentrated on the substance use recovery efforts.
- In 2021, the peer program has integrated mental health peer recovery into the model and is moving forward to develop an integrated and expanded peer support system

# Peer Recovery Support Services

The Arkansas Model

Peer in Training



Arkansas Peer Recovery Specialist



Arkansas Advanced Peer Recovery Specialist



Arkansas Peer Recovery Peer Supervisor

# Peer In Training

## Eligibility Criteria:

- A minimum of 2 years of personal recovery
- GED
- Have not committed a sex offense or murder
- Complete core training
- Have a certified Peer Recovery Peer Supervisor (PRPS) oversee the mandatory 500 hours of experience and sign off on those hours



# Peer In Training

## Credential Requirements:

- Complete all Peer in Training requirements (including core training)
- 46 education hours (core training = 30 Ed. Hours)
- 16 hours needed after core training
- 500 experience hours (100 hours domain specific)  
(Advocacy=25, Ethical Responsibility=25, Mentoring/Education=25, Recovery/Wellness=25)
- 25 peer supervision hours (individual/group)

*Once the above requirements are met the peer is eligible to schedule credentialing exam*

# Advanced Peer Recovery Specialist

## Credential Requirements:

- Complete all core level peer training requirements
- 18 education hours (Advanced training)
- 16 hours needed after training
- 500 experience hours (100 hours domain specific)  
(Advocacy=25, Ethical Responsibility=25, Mentoring/Education=25, Recovery/Wellness=25)
- 25 peer supervision hours (individual/group)

*Once the above requirements are met the peer is eligible to schedule credentialing exam*

# Peer Recovery Peer Supervision

## Credential Requirements:

- Complete all advanced level peer training requirements
- 24 education hours
- 16 hours needed after training
- 500 experience hours (100 hours domain specific)
- 250 of those are providing supervision
- 25 peer supervision hours (individual/group)

*Once the above requirements are met the peer is eligible to schedule credentialing exam*



# Program Development

Lonoke County Jail released 16 men into society from the jail's recovery program.

- 12 have sustained recovery
- 60% had never been offered treatment, were not aware of the disease of addiction, and did not know recovery was an option.
- 40% had been in a traditional treatment more than once.
- 60% choose to go into recovery housing upon their release.
- 85% had been incarcerated at the same jail more than three times for over 30 days at a time.



# Anti-Stigma Campaigns & Social Media Support

- The Recovery Clinic
- Overdose Awareness Events
- Christmas in recovery
- Outreach teams



# Current Programs in Arkansas Jails

- Lonoke County
- Lawrence County
- Garland County
- Sebastian County

In addition, there is a peer program for youth in treatment centers who are in the custody of the Division of Youth Services



# Overdose Response Teams

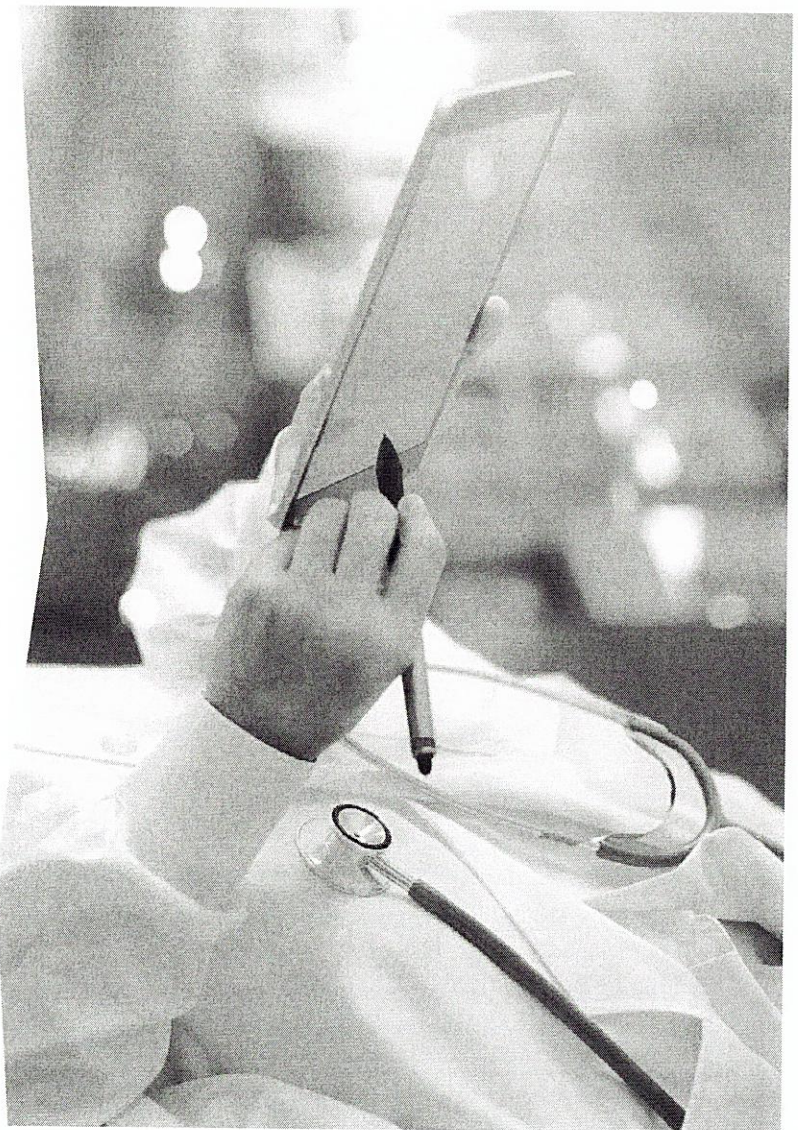
## Police and Peer Partnerships

Lonoke County  
Hot Springs PD  
Johnson County  
Izard County DTF  
6th Central DTF  
Jefferson County



# Hospital Emergency Department Peers

- Bradley County Medical Center
- Jefferson County Unity Health
- River Valley Primary Care



AR K A N S A S  
DEPARTMENT OF  
HUMAN  
SERVICES

Peer Support

## Peer Recovery Support

- Currently there are 373 trained Peer Recovery Support Specialists in the state of Arkansas
- Classes are ongoing to increase the number of Peer Recovery Support Specialists
- DAABHS is using multiple funding streams to support the Peer Recovery Support Specialist training
- Outreach to courts, law enforcement, hospitals, providers, the criminal justice system, and others to identify and create opportunities for individuals who are in recovery.

# Find Us On...



@ArkDHS



@ARRHumanServices



@arkansasdhs



ARRHumanServices

1



ARKANSAS  
DEPARTMENT OF  
HUMAN  
SERVICES

humanservices.arkansas.gov

**We Care. We Act. We Change Lives.**



**A R K A N S A S  
D E P A R T M E N T O F  
H U M A N  
S E R V I C E S**

[humanservices.arkansas.gov](http://humanservices.arkansas.gov)