

**EXHIBIT C-1 - AR Heart Hospital  
PowerPoint**



**ARKANSAS  
HEART  
HOSPITAL®**  

---

**ALL HEART**



ARKANSAS HEART HOSPITAL

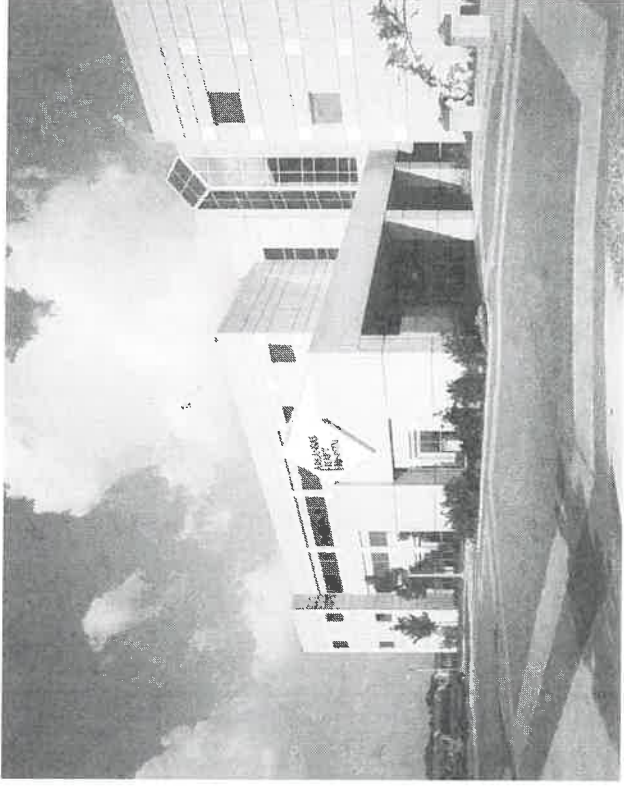
ARKANSAS  
HEART  
HOSPITAL®  

---

ALL HEART

## Hospital Facility

- MedCath and Local Physician Established - 1997
- Patient Focused Care – Bringing Ancillary Services to Patient Bedside
- Highest Patient Satisfaction in Nation
- 110 Inpatient ICU Beds (All Private Rooms)
- 6 Cardiac Catheterization Labs
  - 22 Day Patient/Discharge Lounge Unit
- 3 Operating Suites
  - 8 Post Anesthesia Care Bed Unit
- 9 Emergency Room Beds
- Wound Care and Hyperbaric Center
- Renovation Complete 2016



ARKANSAS  
HEART  
HOSPITAL®  
ALL HEART

## Patient Focused Care

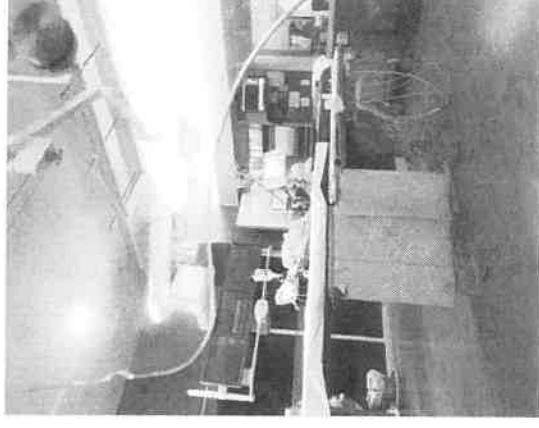
- 7 Bed Pod Design, with 1:3 RN to Patient Ratio
- Bedside – Colonoscopy, EGDs, Xray, Bronchoscopy, Blood Lab, Central Lines, Echocardiography
- Unique Utilization of APNs vs. Hospitalists
- Team Approach, Family Approach
- Award-Winning Executive Chef Team
- Varied Specialty Consultation
- Research Coordination
- Speech Therapy
- Dietetics
- Diabetes Management
- Physical Therapy
- Strong Clinical and Financial Leadership Collaboration - Cost vs. Quality



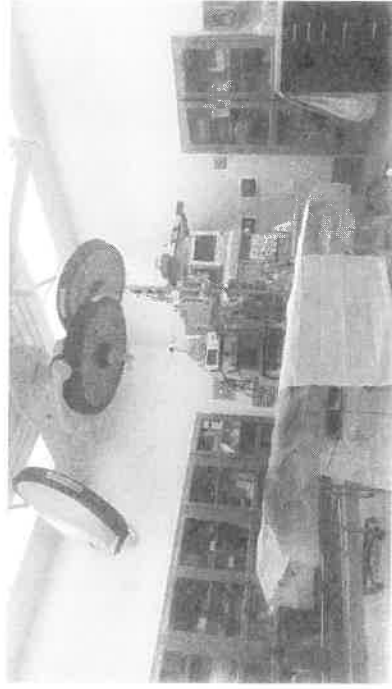
ARKANSAS  
HEART  
HOSPITAL®  
ALL HEART

## Cardiac Catheterization Labs

- 40 Case Average/Day, including Electrophysiology
- Cutting Edge Technology – Optical Coherence Tomography, MitraClip, Transapical Aortic Valve Replacement (Minimally Invasive – TAVR), Chronic Total Occlusions (CTOs), Afib Ablations (Mediguid)
- 85% Radial Access – National Training Site Since 2011
- Advanced Techniques and Specialized Staff



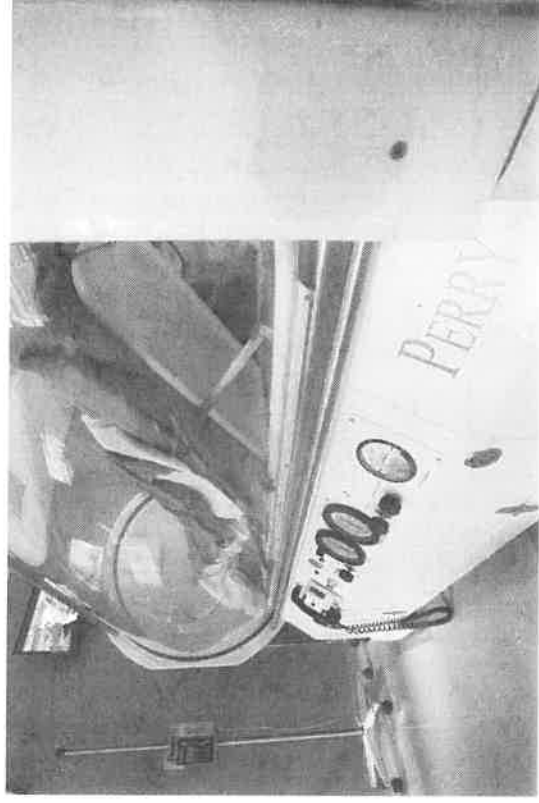
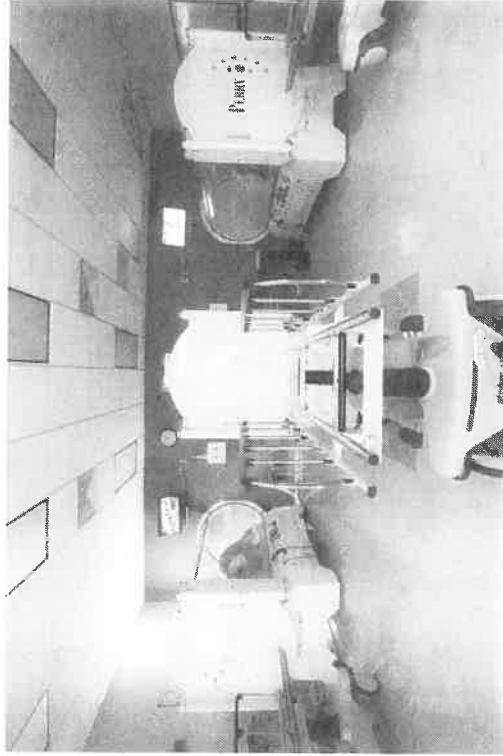
## Operating Room Suites



- Open Heart Surgeries: 900 Cases/Year
- On-Pump/Off-Pump Capabilities
- Cardiothoracic, Vascular, Bariatric, General, Orthopedics, Urology
- Post Acute Care Unit with 1:1 Nursing Care

## Wound Care and Hyperbaric Center

- Dominant Market Leader
- State-of-the-art Hyperbaric Treatment
- Average 10 Hyperbaric Visits per day
- Average 40 Wound Care Visits per day



# Arkansas Heart Hospital Clinics



ARKANSAS  
HEART  
HOSPITAL®  

---

ALL HEART



## Main Clinic Facility – Little Rock

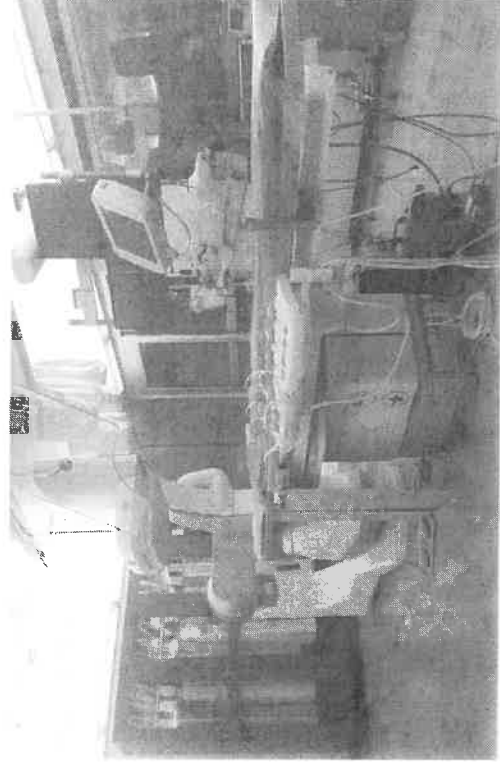
- 65,000 Sq Ft, 4 Floor Facility within 250 Yards of Hospital Facility
- 2 Cardiac Catheterization Labs
- CT, Echocardiography, Xray, Laboratory, Nuclear Medicine
- Keep the Beat Outreach Program and Suite
- Vein and Vascular Institute
- Congestive Heart Failure Clinic
- Telemedicine Suite
- Intensive Cardiac Rehabilitation
- Device Clinic
- Coumadin Clinic
- Endocrinology Clinic



ARKANSAS  
HEART  
HOSPITAL®  
ALL HEART

## Clinic Cardiac Catheterization Labs

- 2 GE Imaging Labs (replaced in 2015)
- Diagnostic and Occasional Interventions
- 10 Pre and Post Beds
- Cardiomems Implant Site



## Vein and Vascular Institute

- Midlevel Provider Teams
- Segmental Doppler/Ankle Brachial Indices
- Follow-Up Care Post Peripheral Interventions
- Satellite Outreach
- 2 Venous Procedure Rooms
- Vascular Diagnostic Imaging



ARKANSAS  
HEART  
HOSPITAL®  
ALL HEART

# Bariatric and Metabolic Institute

- #1 Single Provider Entity in Arkansas
- Regional Plan



**bmi** The Bariatric & Metabolic Institute

---

ARKANSAS HEART HOSPITAL<sup>®</sup>

ARKANSAS  
HEART  
HOSPITAL<sup>®</sup>  
ALL HEART



Both Crowder, Ph.D., APRN, meets with a diabetes patient in the Little Rock Clinic. The program will soon expand to Conway, Russellville and Searcy.

**A PROGRAM  
WITH PURPOSE**  
DIABETES & ENDOCRINOLOGY  
PROGRAM EXEMPLIFIES THE  
AHH MODEL FOR PATIENT-  
FOCUSED CARE.

**ARKANSAS  
HEART  
HOSPITAL**  

---

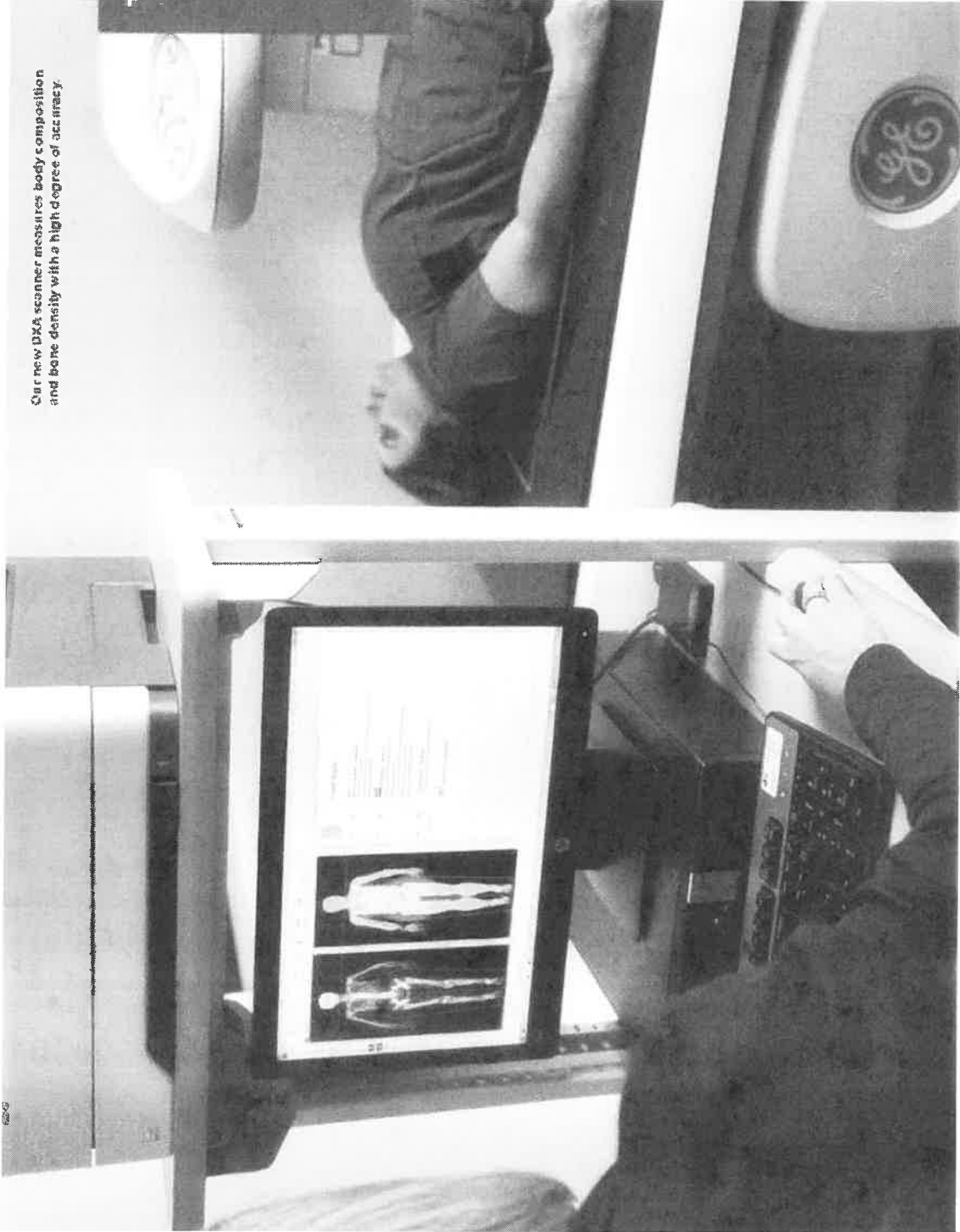
**ALL HEART**



Our new DXA scanner measures body composition and bone density with a high degree of accuracy.

# WORLD-CLASS IMAGING

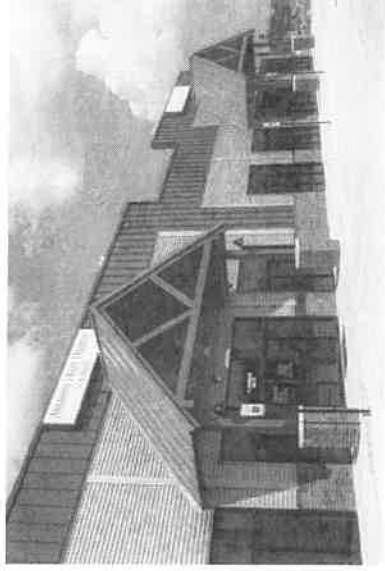
AHH ADDS TO MEDICAL  
IMAGING SERVICES WITH  
NEW DXA SCANNER AND  
VANTAGE MRI.



ARKANSAS  
HEART  
HOSPITAL®  
ALL HEART

## Full Time Satellite Clinics

- Little Rock
- Benton
- North Little Rock
- Russellville
- Conway
- Searcy
- Hot Springs
- El Dorado



ARKANSAS  
HEART  
HOSPITAL®  

---

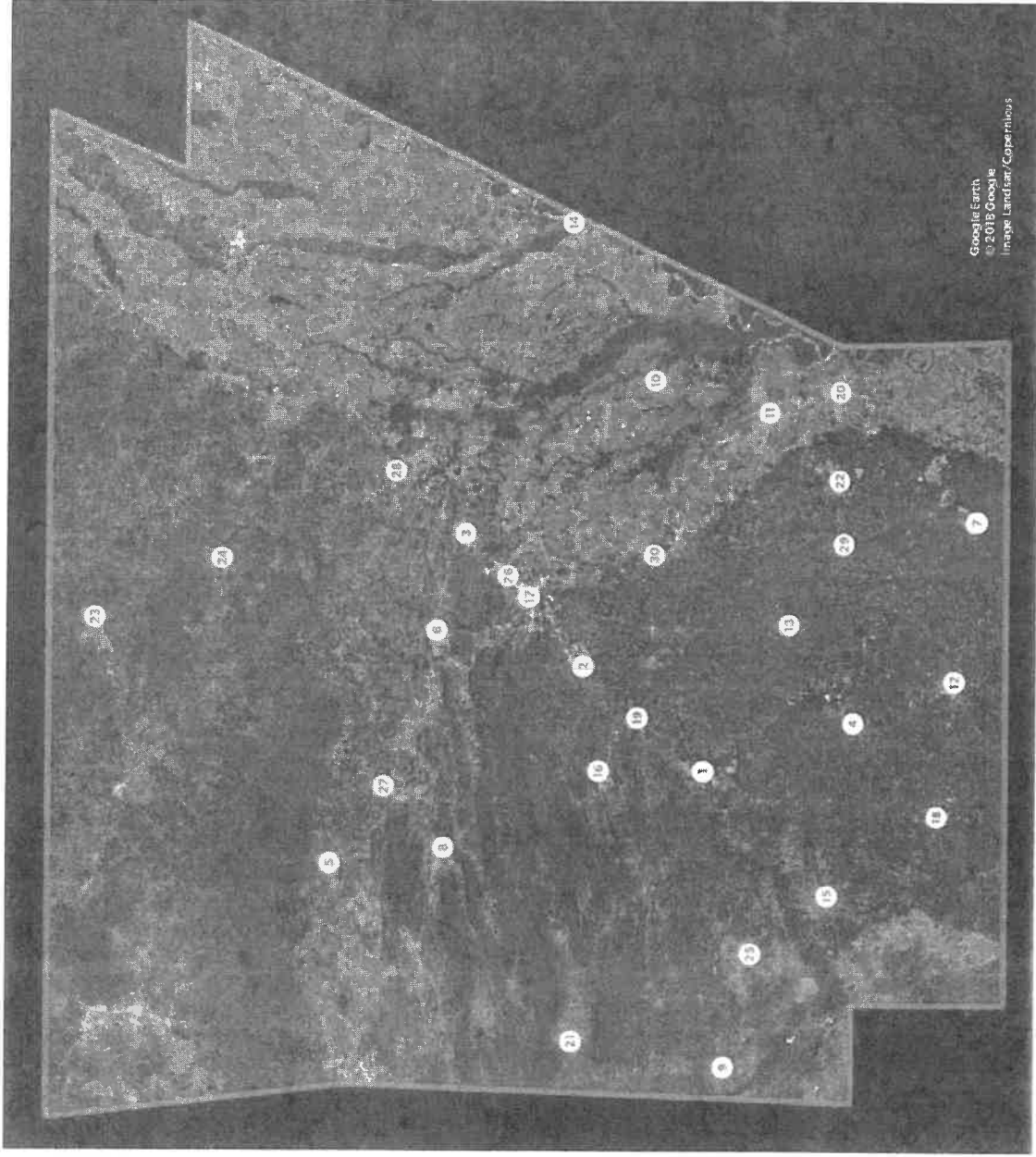
ALL HEART



# FROM THE DELTA TO THE OZARKS

Arkansas Heart Hospital is the only hospital in the state dedicated to cardiac care. But we know convenience matters, too. That's why we have 30 clinics in local communities throughout Arkansas – making the best in heart health easier for our patients. From diagnostic screenings and early detection to pulmonary services and medication management, we make specialization incredibly convenient.

- |                        |                       |
|------------------------|-----------------------|
| 1. Arkadelphia         | 16. Hot Springs       |
| 2. Saline County       | 17. Little Rock       |
| 3. Cabot               | 18. Magnolia          |
| 4. Camden              | 19. Malvern           |
| 5. Clarksville         | 20. McGehee           |
| 6. Conway              | 21. Mena              |
| 7. Crossett            | 22. Monticello        |
| 8. Danville            | 23. Mountain Home     |
| 9. DeQueen             | 24. Mountain View     |
| 10. Dewitt             | 25. Nashville         |
| 11. Dumas              | 26. North Little Rock |
| 12. El Dorado          | 27. Russellville      |
| 13. Fordyce            | 28. Searcy            |
| 14. Helena-West Helena | 29. Warren            |
| 15. Hope               | 30. White Hall        |



# AHIMPACT

## 2019 BY THE NUMBERS

**OVER 125,000 OFFICE VISITS**

**UP 25%**

VALVES

**UP 7%**

ER VISITS

**UP 5%**

ADMITS &  
DISCHARGES

COMPLEX  
ABLATIONS

**UP 39%**

STRUCTURAL  
HEART CASES

**UP 43%**

BARIATRIC  
SURGERIES

**UP 60%**

**18%**

NEW PATIENT  
GROWTH

## 2019 BY THE NUMBERS

Patients depend on us for their cardiac care. It is a responsibility we take very seriously. So Arkansas Heart Hospital continually expanding services, investing in local communities, exploring new technologies and leading the way in innovation. While numbers do matter—more, greater, better, higher—we never lose sight of our commitment to each individual patient. Their successes are the ones we celebrate most.

WE'RE  
SERVING  
MORE  
HEART  
PATIENTS  
THAN  
EVER  
BEFORE



WE TREATED  
PATIENTS FROM

**41**

STATES  
AT OUR HOSPITAL  
& CLINICS

**OVER 125,000 OFFICE VISITS**



THE ARKANSAS CARDIAC CLASSIC

## CARDIAC CLASSIC

The 2019 Cardiac Classic was another huge success, thanks to the riders who participated from Arkansas and surrounding states.

WE HAD 415

TOTAL RIDERS

AND RAISED

OVER \$30,000 FOR

CHAMPIONS FOR

HEALTH



Diabetes & Endocrinology

In its first full year of

operation, our Diabetes &

Endocrinology program

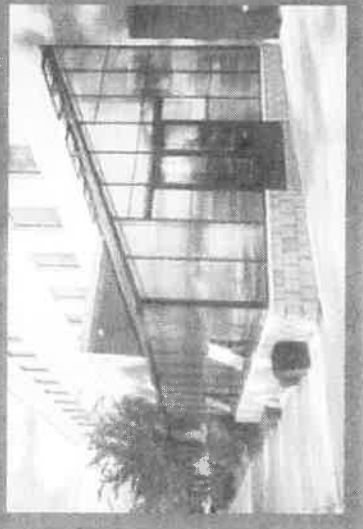
exceeded expectations with

400 NEW PATIENTS



## AHH GARDEN GROWTH

AHH CULINARY DEPARTMENT'S NEW ON-SITE GREENHOUSE PROMOTES THE HEALING POWER OF FOOD.



## VEIN & VASCULAR TEAM BEGINS WOUND CARE OUTREACH

In 2019, Our Vein & Vascular team added wound care services to clinics in Russellville, Searcy, Hope, Helena, Magnolia and El Dorado. In addition to their regular vein and vascular services, the team now also offers services including dressing changes, wound VAC and treatments for pressure and diabetic foot ulcers.

## AHH AT A GLANCE

NEWS & NOTES FROM AROUND THE HEART



### CONTINUED SUCCESS IN CONWAY

The Conway clinic is our only facility outside of Little Rock that features hyperbaric chambers and a cath lab - both of which saw major success in 2019.

CONWAY WOUND CARE HBOS UP 28%  
CONWAY CATH LAB PATIENTS UP 21%

### STARTING STRONG

Resilient Hearts Cardiac Prehabilitation helps patients prepare for surgery and is improving outcomes through education, fitness training and counseling.

41% GROWTH IN TOTAL PREHAB PATIENTS

### FINISHING STRONGER

The Strong Hearts Rehab Center in Russellville is helping patients achieve optimal recovery through exercise, nutritional education and more.

RUSSELLVILLE TOTAL ICR/CR SESSIONS UP 77%

## NEW MRI MAKES WAVES WITH PATIENTS

Our new MRI is a more comfortable experience for patients, and it's reflected in the numbers, with TOTAL RADIOLOGY MRI PATIENTS UP 98%

ARKANSAS  
HEART  
HOSPITAL

ALL HEART

**MEDICAL STAFF**



Scott Archer, MD  
 Scott L. Berg, MD, FACC  
 Greg Bedenke, MD  
 Thomas Blakeslee,  
 MD, FACC, FASIS  
 Jim Boy, MD



Bruce Barton, MD  
 Peggie Cole, MD  
 James Daniels, MD  
 Scott Daniels, MD  
 Leverta DuPole, MD



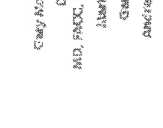
Jerry Dixon, MD  
 Earl W. Edwards, MD  
 Paul W. J. Flaherty III, MD, FACC  
 Joe Farnes, MD, FACC  
 Richard Frenkel, MD



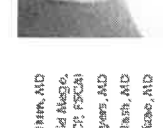
D. Andrew Henry, MD, FACC  
 Mitchell D'Arcy Hines, MD, FACC  
 James J. Kane, MD, FACC  
 Wesley Lamb, MD



Carl Leding, MD, FACC  
 Phil Leland, MD  
 Neil Leland, MD, FACC  
 Morris Ia, MD, FACC, FHRP  
 Greg Loyd, MD



Gary Mackinn, MD  
 David Macko,  
 MD, FACC, FACC, FSCAI  
 Mark Myers, MD  
 Gary Nash, MD  
 Anicie Palsac, MD



Dan McRobert, MD  
 Vijay Naga, MD  
 Paolo A. Rhee, MD,  
 PhD, FRC, FACC, FSCC  
 William R. Hefner, MD, FACC  
 David S. Hestbet, MD



Athanasios Skalytzis, MD  
 Dylan Theodor, MD  
 Suzanne Thibault-Popov, MD  
 Justin Tozice, MD  
 Ted Williams, MD



Arifien Soeng, MD, FACC



NOT PICTURED  
 Gary Adams, MD

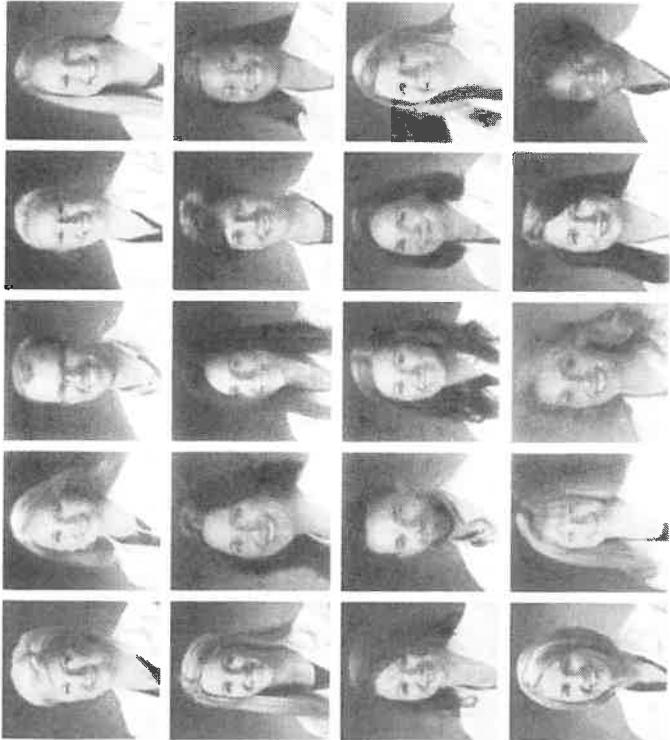


NOT PICTURED  
 Justin Hoyle, MD



NOT PICTURED  
 Brian Heston, MD

**ARKANSAS  
 HEART  
 HOSPITAL**  
**ALL HEART**

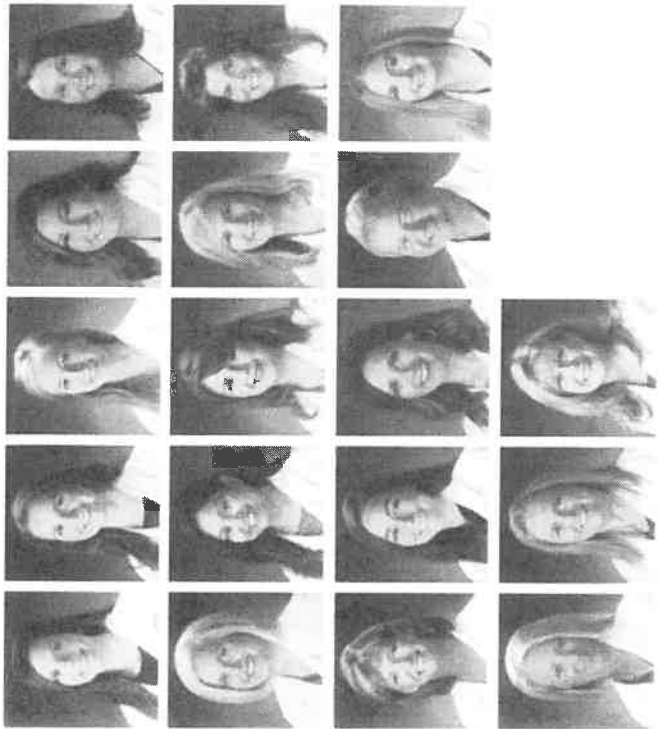


RASHA ALPHEE, APRN  
 LARNE ANSELL, APRN  
 BETH BARR, APRN  
 SARAH BAKER, APRN  
 MARLENE BERTS, APRN

KARL EMMELLY, PA-C  
 LINDSEY CHAMBERS, APRN  
 ABBY CANNADY, APRN  
 ERIN KAWCHAK, APRN  
 DOMINA DAVIS, APRN

CONSIDY CRYST, APRN  
 JESSICA RICE, APRN  
 JESSICA RICE, PA-C  
 TROY HALL, APRN  
 ANTHONY HINCHLYN, APRN

SUSAN HEMMENDER, APRN  
 LYNN HAY, APRN  
 FERRIS HENDER, APRN  
 SWAN JONES, APRN  
 CHRISTOPHER LOVE, APRN



LARREN McBRIDE, APRN  
 CYNTHIA MCKEE-SAMBERS, APRN  
 HANNAH MICHAEL, APRN  
 AMBER MOODY, APRN  
 ANTHONY MULLINS, APRN

SHARON GARDNER, APRN  
 HELEN PATEL, APRN  
 KATHYANN FLEMING, APRN  
 JANA FINDER, APRN  
 JENNIFER BATHURSTON, APRN

JANISLA SHANNON, APRN  
 ADA SOOBAH, PA-C  
 GRAY SPICKES, APRN  
 PATRICIA SWANSON, APRN  
 SYBILLE THESING, APRN

SARA THOMPSON, APRN  
 DEAN WILSON, APRN, DNP  
 CORY YOUNG, APRN

# ARKANSAS HEART HOSPITAL®

---

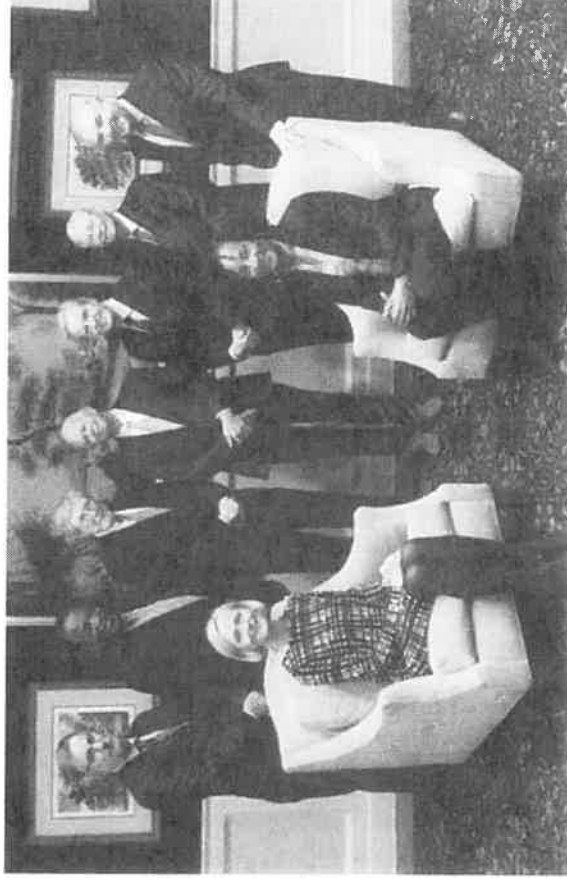
ALL HEART

# The Executive Team & Board of Directors

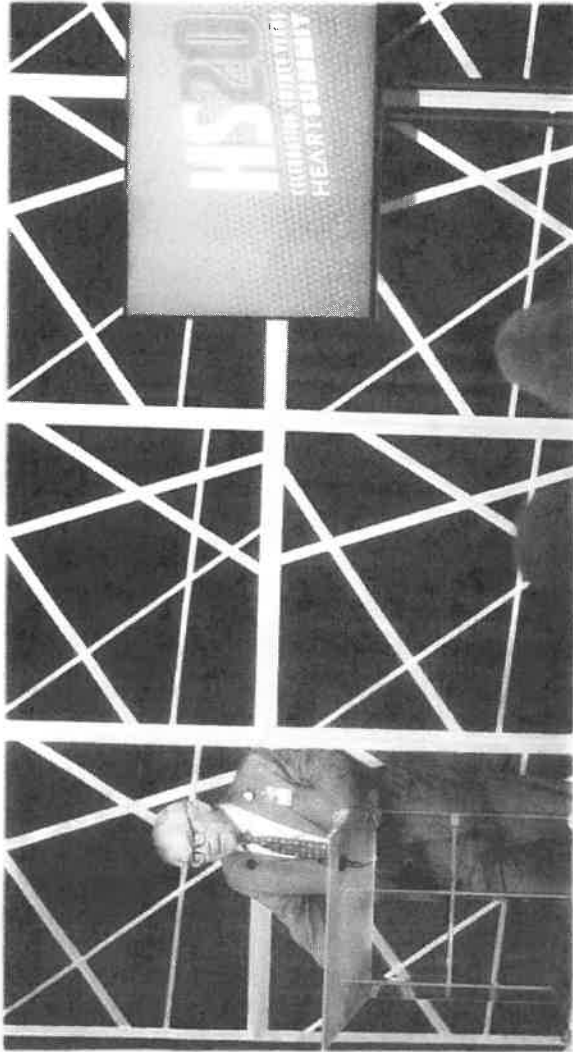


**EXECUTIVE TEAM** FRONT ROW FROM LEFT: Rachelle Younce, Dr. Bruce Murphy, Anitra Nelson, Ashley Hixon, Richard Perry, Deborah Mitchell, Deedra Walker  
**BACK ROW FROM LEFT:** Matt Robinson, Bobby Robinson, Kevin Nelson, Brian Cahalan, Derek Coy, Corralyn George

**BOARD OF DIRECTORS** FRONT ROW FROM LEFT: Chris Darnold, Kim Lovelace  
**BACK ROW FROM LEFT:** Dr. Scott Beaul, Bob J. Nash, Dr. James Lane, Dr. CD Williams, Jim Guy Taylor, Charlie Smith, and Dr. Bruce Murphy







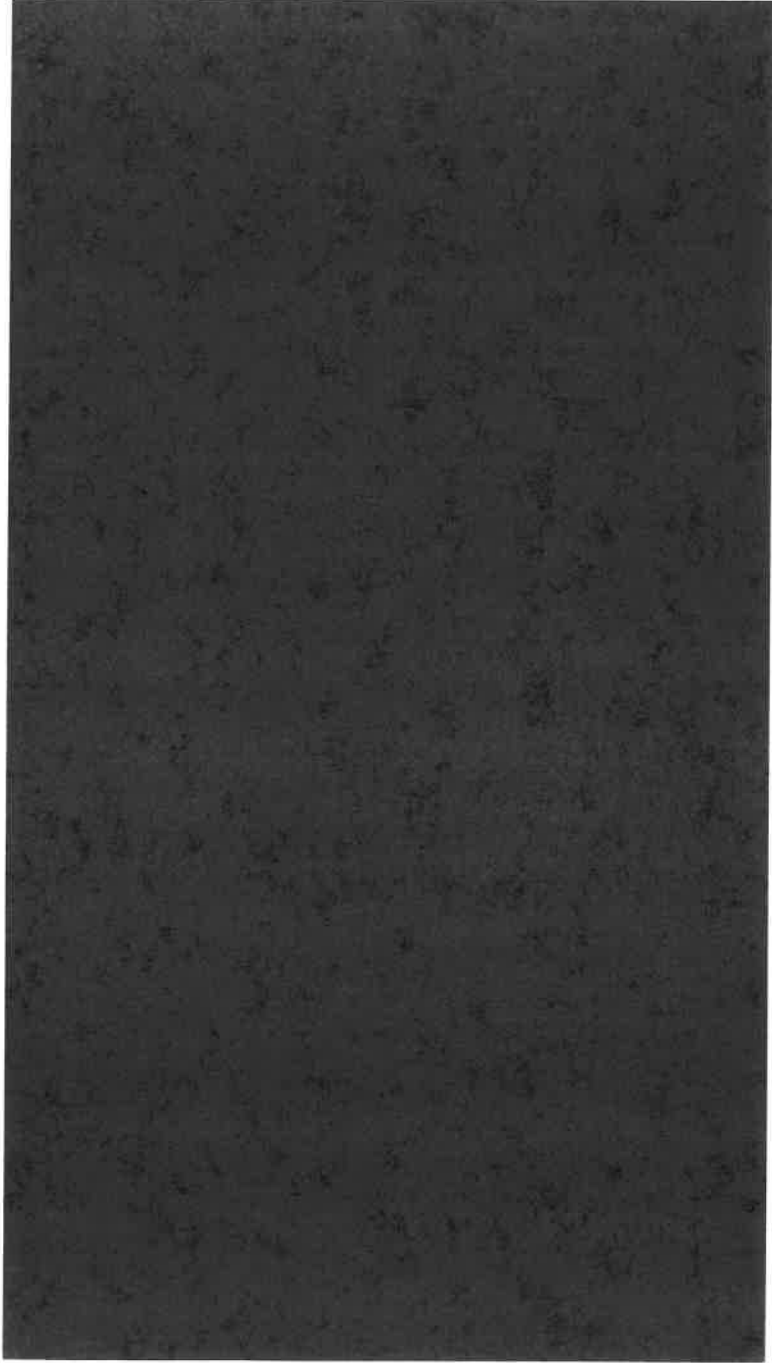
THE SUMMIT  
TURNS 20  
ARKANSAS' PREMIER  
CARDIOVASCULAR  
CONFERENCE  
CELEBRATES MILESTONE  
WITH  
RECORD TURNOUT



This year we proudly celebrated the 20-year milestone of bringing our cardiovascular conference to practitioners and health care professionals across the state. The Heart Summit is known for its relevant, insightful and entertaining topics and cases. This year was no exception. Once again, we had an impressive faculty that brought their expertise to life through a variety of live cases, debate and didactic lectures. We experienced our largest ever in-person attendance with more than 500 doctors, nurses, PAs, APRNs, dietitians, pharmacists, rad techs, respiratory techs, coders and others present for our two day event. We also added a new component this year – live streaming. Hundreds of viewers experienced the summit via live stream, with approximately 100 of those receiving CME credit.

ARKANSAS  
HEART  
HOSPITAL®  
ALL HEART

# Strong Hearts





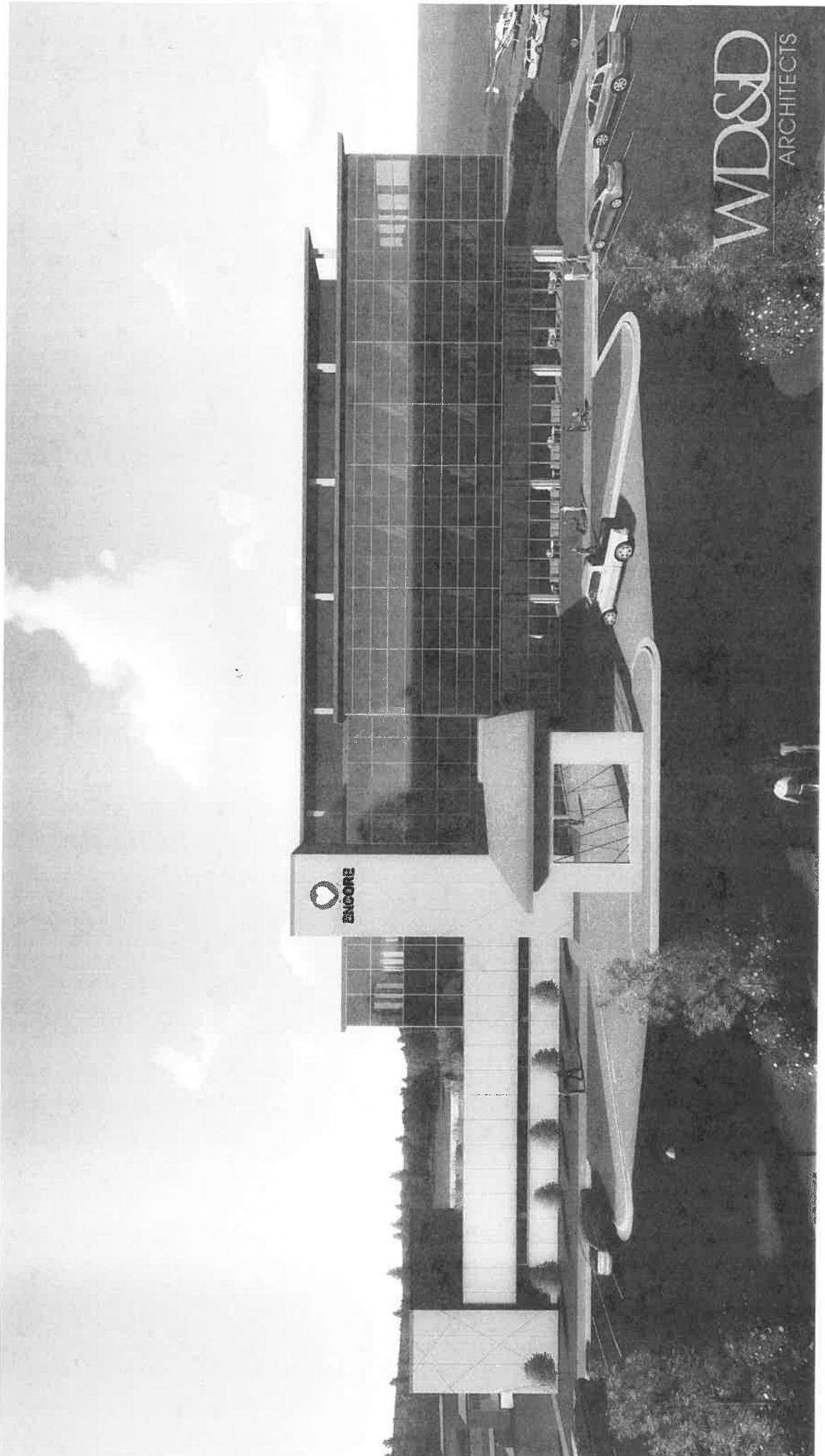
# ENCORE ON THE RISE



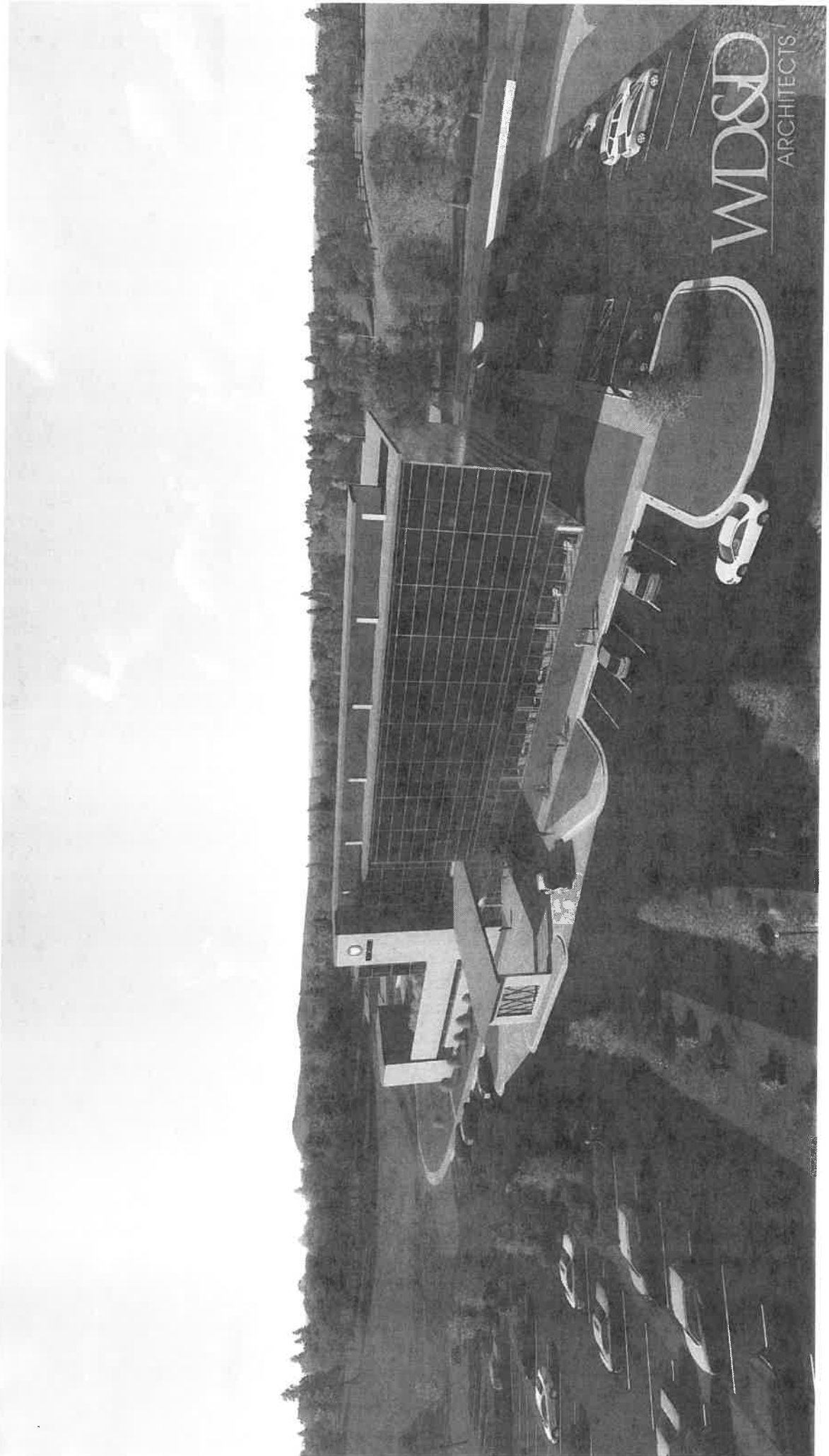
Construction is well under way for Arkansas Heart Hospital (Encore Medical Center). Encore will be an acute, innovative cardiac care hospital with a primary focus on adult obesity and peripheral vascular disease. The approximately 87,985-square-foot building will include private inpatient beds, a full-service emergency department, two cardiac catheterization labs, two operating rooms, a post-anesthesia care unit, MRI, CT, nuclear medicine, X-ray, cardiac PET and more. On August 21, 2019, AHH and our partners on the Encore project gathered with Saline County community members in Bryant to celebrate the final installation of major steel. Leading up to the topping out ceremony, 30,000 cubic yards of dirt had been excavated, 175,000 cubic feet of concrete was poured (with more to come), and 910 tons of steel utilized. As of early November, mechanical, electrical and plumbing is being installed in the wall and overhead on the first floor, framing is occurring in the first and second floors, top portions of the sheet rock is being installed on the basement and first floor, the precast panel install is complete, fireproofing is complete on first, second and third floors, and much more. Significant progress with much more to come! We look forward to opening Arkansas Heart Hospital Encore towards the end of 2020.

# Arkansas Heart Hospital Encore

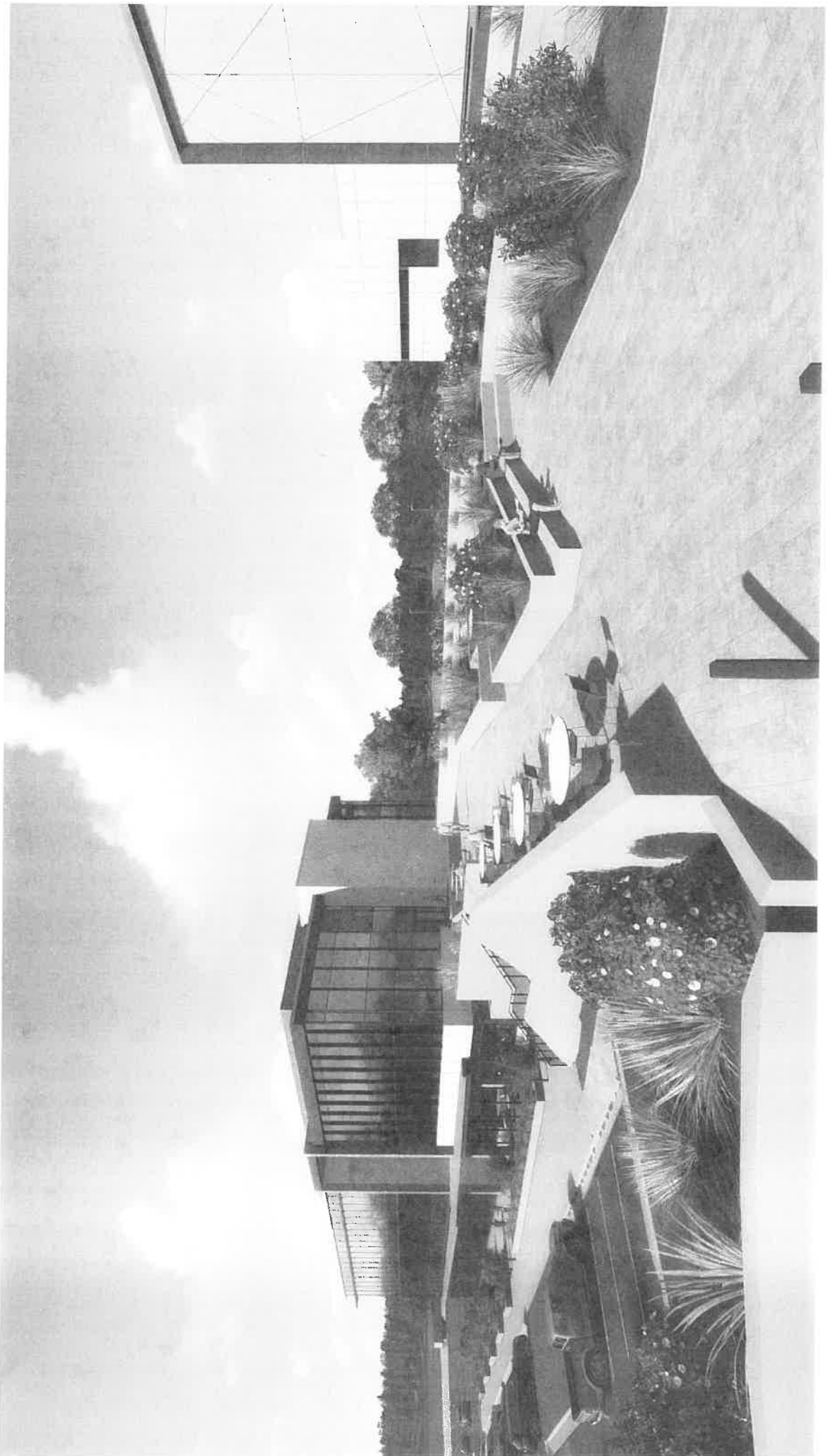




WD&D  
ARCHITECTS



WD&D  
ARCHITECTS





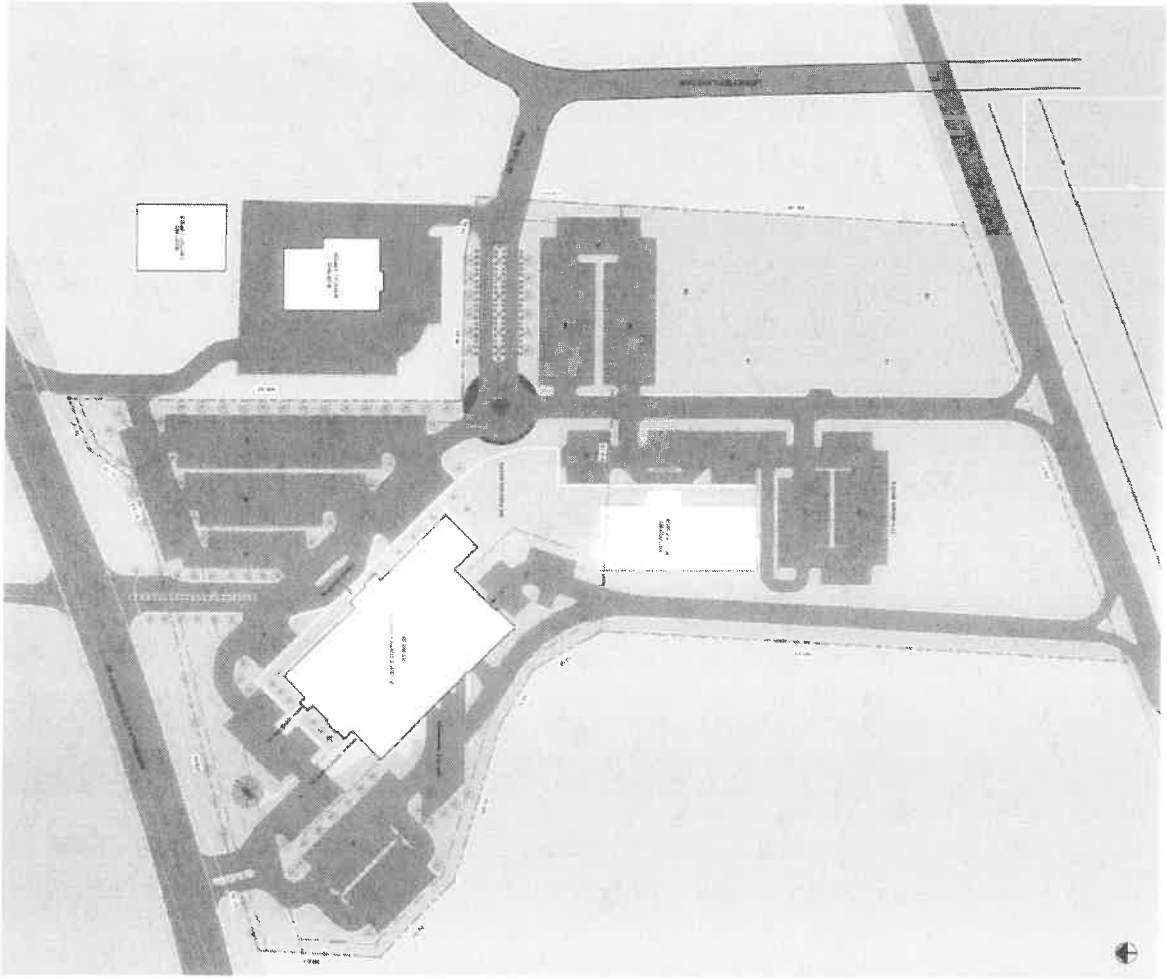


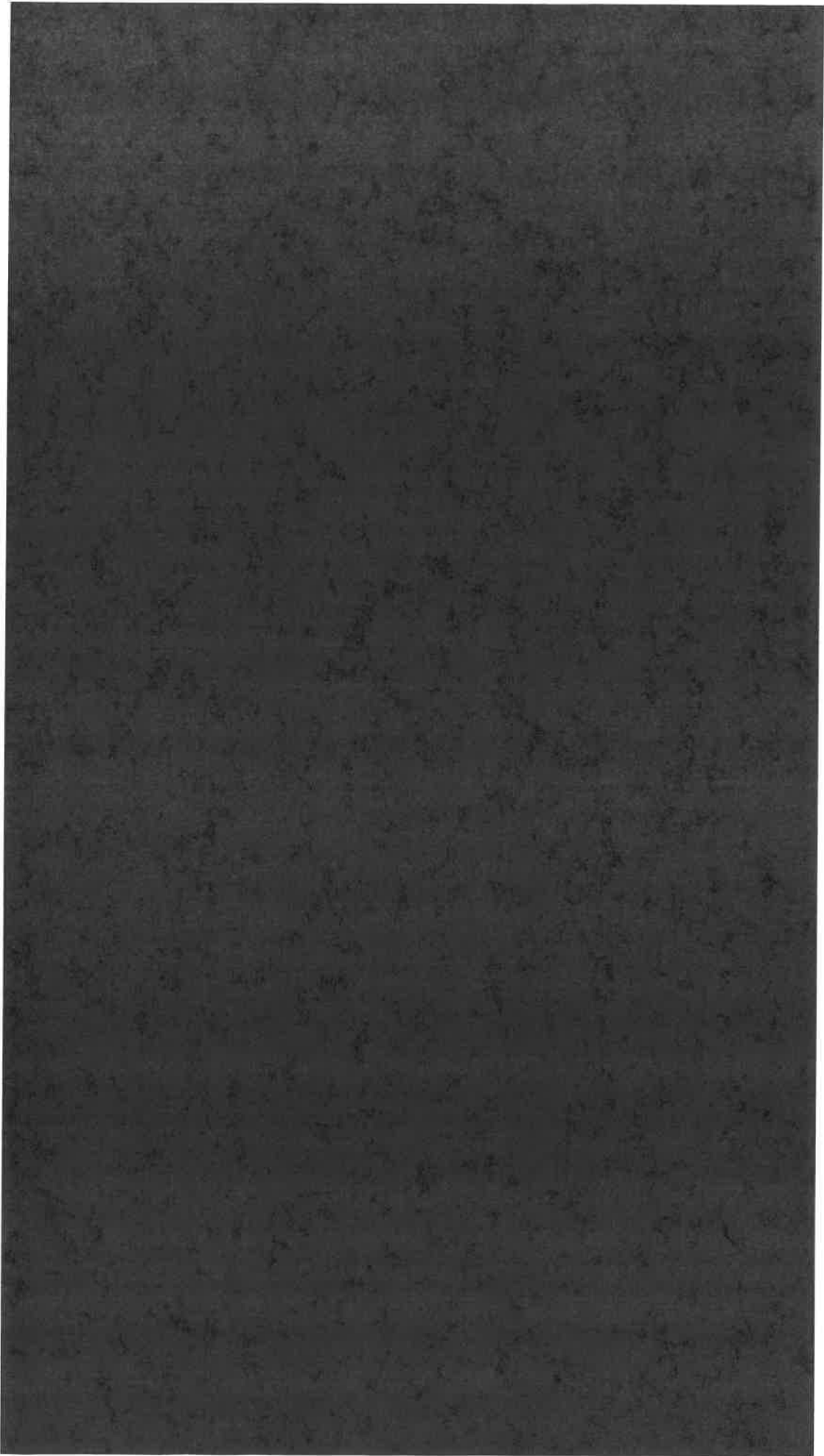
6 mi

Saline

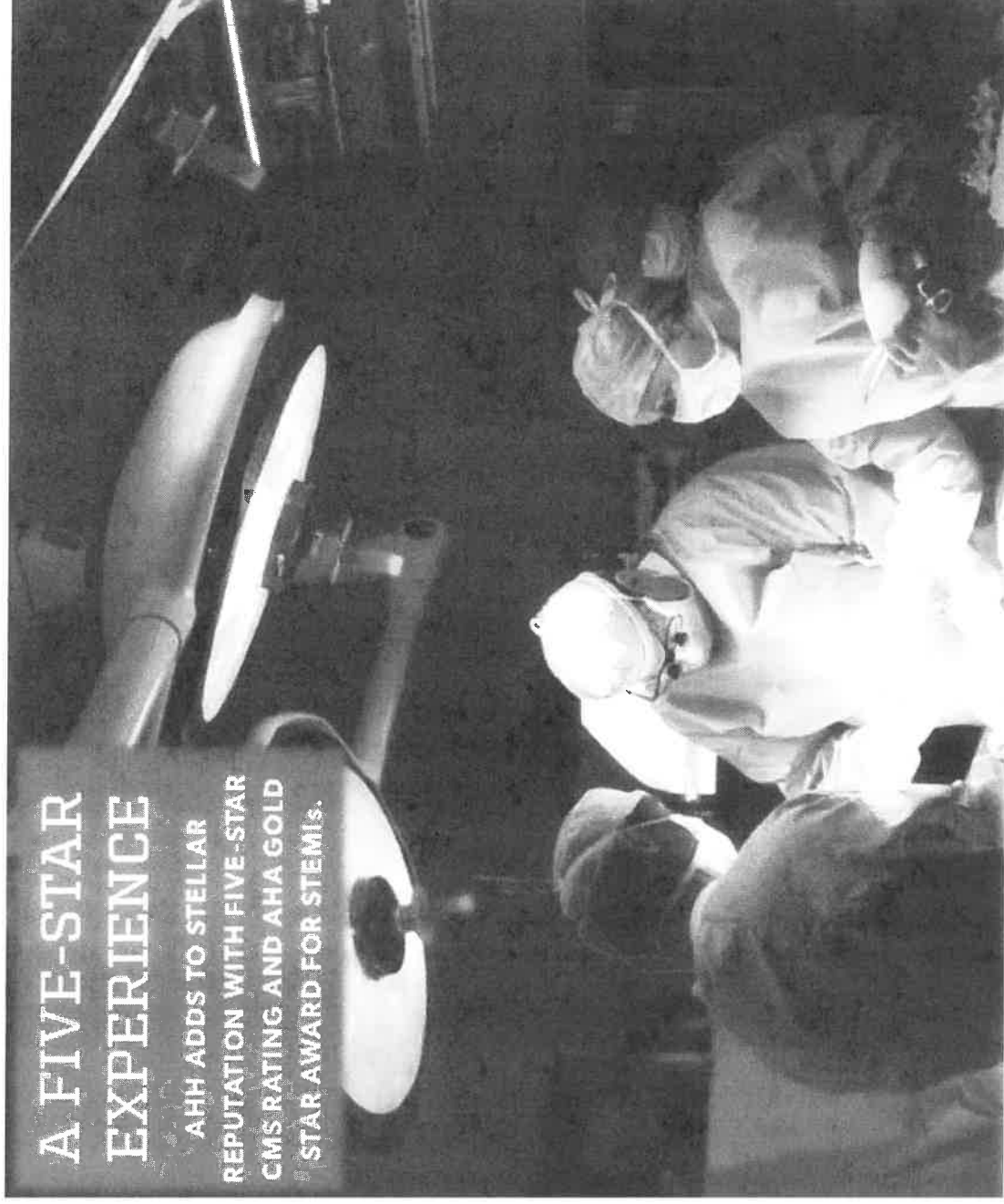
Google Earth

© 2017 Google









# A FIVE-STAR EXPERIENCE

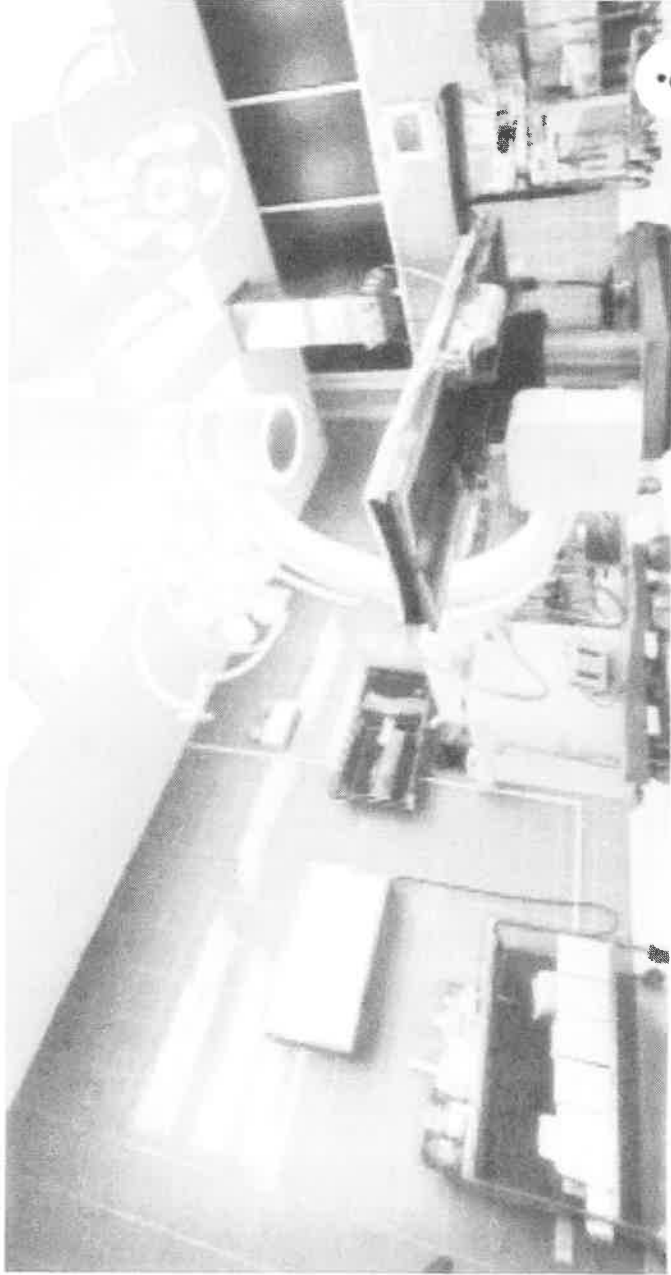
AAH ADDS TO STELLAR REPUTATION WITH FIVE-STAR CMS RATING AND AHA GOLD STAR AWARD FOR STEMS.

- 5 star - 407 Hospitals
- 4 star - 1136 Hospitals
- 3 star - 1191 Hospitals
- 2 star - 710 Hospitals
- 1 star - 228 Hospitals



# Hospital Compare Report from CMS

Facility	Star Rating
Arkansas Heart Hospital	★★★★
Baptist Medical Center – Little Rock	★★
UAMS Medical Center	★
CHI – St. Vincent Infirmary	★
Saline Memorial Hospital	★★
Baptist Medical Center – NLR	★★★
Baptist Medical Center - Conway	★★★★



BEHRENSHOSPITALREVIEW.COM

**The nation's top 22 patient-recommended hospitals: The following hospitals were the top patient-recommended...**

**ARKANSAS  
HEART  
HOSPITAL<sup>®</sup>**  

---

**ALL HEART**

# The Nation's Top 22 Patient-Recommended Hospitals (Becker's Hospital Review)

<b>Arkansas</b>	<b>Louisiana</b>	<b>Pennsylvania</b>
<ul style="list-style-type: none"> <li>• <i>Arkansas Heart Hospital (LR)</i></li> <li>• Arkansas Surgical Hospital (NLR)</li> </ul>	<ul style="list-style-type: none"> <li>• Lafayette General Surgical Hospital</li> </ul>	<ul style="list-style-type: none"> <li>• Surgical Institute Of Reading</li> <li>• OSS Orthopaedic Hospital</li> </ul>
<b>Colorado</b>	<b>North Carolina</b>	
<ul style="list-style-type: none"> <li>• Animas Surgical Hospital</li> </ul>	<ul style="list-style-type: none"> <li>• <i>Davie Medical Center</i></li> </ul>	<ul style="list-style-type: none"> <li>• WellSpan Surgery and Rehabilitation Hospital</li> </ul>
<b>Iowa</b>	<b>Nebraska</b>	
<ul style="list-style-type: none"> <li>• <i>Iowa Specialty Hospital</i></li> </ul>	<ul style="list-style-type: none"> <li>• Lincoln Surgical Hospital</li> <li>• Ortho Nebraska Hospital</li> </ul>	<ul style="list-style-type: none"> <li>• Advanced Surgical Hospital</li> <li>• Cancer Treatment Centers of America</li> </ul>
<b>Illinois</b>	<b>Ohio</b>	
<ul style="list-style-type: none"> <li>• Cancer Treatment Centers of America</li> </ul>	<ul style="list-style-type: none"> <li>• <i>Surgical Hospital at Southwoods</i></li> </ul>	<b>Texas</b>
<b>Kansas</b>	<b>Oklahoma</b>	
<ul style="list-style-type: none"> <li>• Premier Surgical Institute</li> <li>• Salina Surgical Hospital</li> </ul>	<ul style="list-style-type: none"> <li>• Cancer Treatment Centers of America</li> <li>• <i>Oklahoma Heart Hospital South</i></li> <li>• <i>Oklahoma Heart Hospital</i></li> </ul>	<ul style="list-style-type: none"> <li>• The Physicians Center Hospital</li> </ul>
		<b>Wisconsin</b>
		<ul style="list-style-type: none"> <li>• Oakleaf Surgical Hospital</li> </ul>

