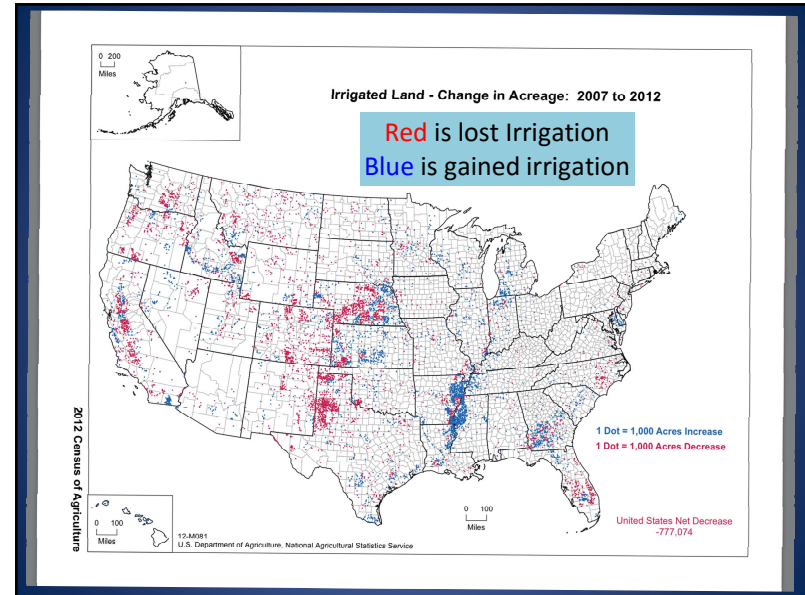


# Exhibit D3

## The Grand Prairie of Arkansas

Dan Hooks  
Farmer  
Slovak, Arkansas

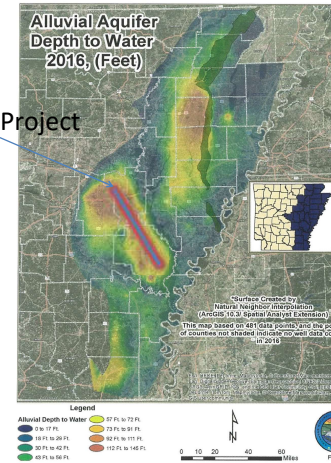
White River Irrigation District President  
Member – Riceland Cooperative  
Prairie County Farm Bureau  
Prairie County Conservation District



New well in 1950  
200 feet to water now.



Grand Prairie Project



## Who Are We?

- White River Irrigation District
  - Legally formed Water District
  - 15 Farmer Elected board members
  - District has been in operation since 1984
  - We do not have taxing authority
  - We not want that authority
  - Our goal is to become sustainable by delivering affordable water

## Home of Riceland Foods and Producers Mill Farmer Owned Cooperatives



## CROPS IN THE REGION

- Grand Prairie
  - We have 300,000 acres within the area
  - 250,000 of those acres are intensely farmed
  - Rice, soybeans, corn
  - 100% of those acres are irrigated
  - It's a highly productive area provided we have water
  - We are not sustainable without surface water

## PROJECT AREA LANDS

- **300,000 ACRES**
  - **250,000 IRRIGATED CROPLAND**
    - **90,000 ACRES RICE**
    - **140,000 ACRES SOYBEANS**
    - **10,000 ACRES OF CORN**
    - **10,000 ACRES OF OTHER**

## WATER WATER

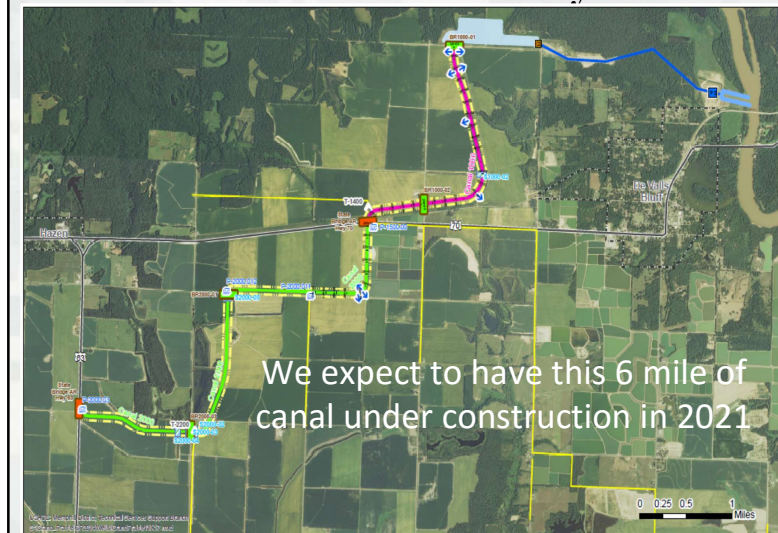
- Our way of life is not sustainable without water
- We are water rich
- The water is not at the right place or right time
- It passes on down the river to the gulf
- So we are asking for your support to develop and distribute this water

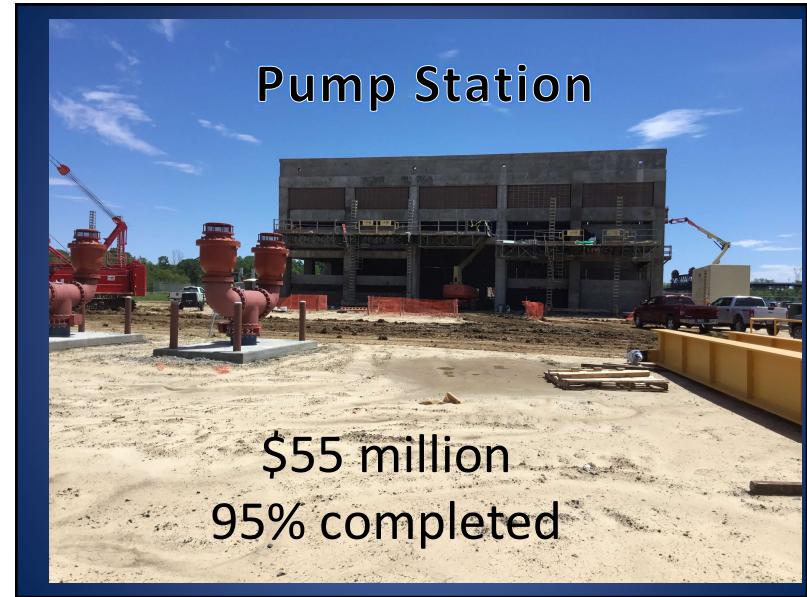
## Introduction of Project

- We started construction in 2000 with On-farm work
- Partners include
  - Corps of Engineers
  - NRCS
  - Arkansas Department of Agriculture
  - ANRC commission
  - We get great help from AGFC and Heritage Commission
  - The Governor's Office has been great



## Grand Prairie to Hwy 63



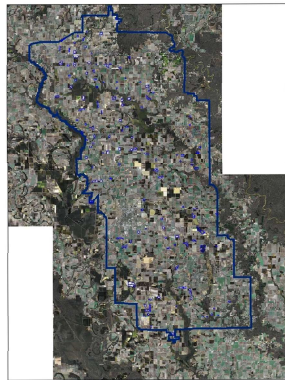


About 350 on farm reservoirs have been built with tailwater systems, pumps, and pipelines

Farmer Constructed  
Farmer Owned

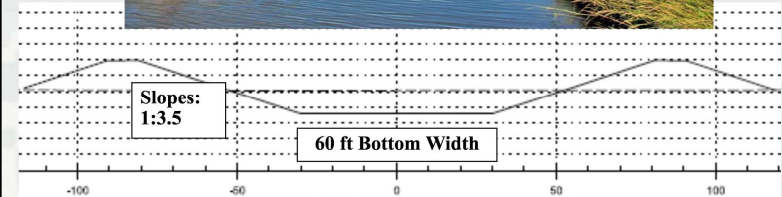
Using  
State Tax Credits  
EQIP  
MRBI

\$60 million Invested



## Main Canals

We need to connect the farms to the Regulating Reservoir



Typical Canal Cross Section



BUILDING STRONG®

Reservoirs Are Pumped Down

Empty



## What's Next

- Corps will complete the pump station \$10 million by 2022
- WRID and NRCS will
  - finalize design Phase 1 of Segment 1 – September 1
  - Contract 2 mile of canal – October 15
  - Finalize designs for Phase 2,3, and 4 by March 1
  - Contracts will be awarded Spring 2021

## Primary Funding Sources

- USDA NRCS PL566 program
  - NRCS has approved \$28 million in funding
  - \$20 million more of federal funding has been requested
  - Corps of Engineers - \$10 million pump station
  - We have an approved plans and willing partners
  - A local match is required of about 30%
  - WRID will request loans to provide the match
  - Farmer payback is required
  - We need you to support the Arkansas Agriculture Department in their efforts to provide those loans

## We Need Your Help and Guidance

- The Productive Grand Prairie is a great asset for this state and nation
- We need to develop our surface water to become sustainable
- We have the RIGHTS to 540,000 acre feet of water annually but it needs to be managed
- Support us on our march to an affordable, sustainable water supply

**Thank You**  
**from your friends at the**  
**White River Irrigation District**  
 Bringing Affordable Water For Agriculture to the Grand Prairie  
 870-255-2202  
**Daniel J. Hooks**  
 President

