

<b>County Name</b>	<b>County seat</b>	<b>County Road Naming Practice for County Roads</b>	<b>County Road Naming Practice for State or US Highways</b>
Arkansas County	De Witt and	Named	Hwy
Ashley County	Hamburg	Ashley Road ###	Highway
Baxter County	Mountain Home	Baxter ### Rd	AR/US
Benton County	Bentonville	BC ###	AR/US
Boone County	Harrison	Named	Hwy
Bradley County	Warren	Bradley ### Rd	AR/US
Calhoun County	Hampton	Calhoun ###	AR/US
Carroll County	Berryville and	Carroll ### Rd	AR/US
Chicot County	Lake Village	Chicot ### Rd	AR/US
Clark County	Arkadelphia	Named	AR/US
Clay County	Piggott and	Clay ### Rd	AR/US
Cleburne County	Heber Springs	Named	Highway
Cleveland County	Rison	Cleveland ###	Highway
Columbia County	Magnolia	Columbia ###	Hwy
Conway County	Morrilton	Named	Hwy
Craighead County	Jonesboro	Craighead ### Rd	AR/US
Crawford County	Van Buren	Named	Highway
Crittenden County	Marion	Named	Highway
Cross County	Wynne	County Road ###	AR/US
Dallas County	Fordyce	Dallas ###	Highway
Desha County	Arkansas City	Named	AR/US
Drew County	Monticello	Named	AR/US
Faulkner County	Conway	Named	Hwy
Franklin County	Ozark and	Named	AR/US
Fulton County	Salem	Named	Hwy
Garland County	Hot Springs	Named	Hwy
Grant County	Sheridan	Grant ###	Hwy
Greene County	Paragould	Greene ### Rd	AR/US
Hempstead County	Hope	Hempstead ###	Highway
Hot Spring County	Malvern	Named	Hwy
Howard County	Nashville	Named	Hwy
Independence County	Batesville	Named	AR/US
Izard County	Melbourne	Named	AR/US
Jackson County	Newport	Jackson ### Rd	AR/US
Jefferson County	Pine Bluff	Named	Highway
Johnson County	Clarksville	County ### Rd	Highway
Lafayette County	Lewisville	Lafayette ### Rd	AR/US
Lawrence County	Walnut Ridge	Lawrence ### Rd	AR/US
Lee County	Marianna	Lee ### Rd	AR/US
Lincoln County	Star City	Named	St Hwy ###/US Hwy ###
Little River County	Ashdown	Little River ###	Hwy
Logan County	Booneville and	Named	AR/US

<b>County Name</b>	<b>County seat</b>	<b>County Road Naming Practice for County Roads</b>	<b>County Road Naming Practice for State or US Highways</b>
Lonoke County	Lonoke	Named	Hwy
Madison County	Huntsville	Madison ### Rd	AR/US
Marion County	Yellville	Marion ###	Highway
Miller County	Texarkana	MC ###	Hwy
Mississippi County	Blytheville and	Mississippi ### Rd	AR/US
Monroe County	Clarendon	Named	AR/US
Montgomery County	Mount Ida	Named	Hwy
Nevada County	Prescott	Nevada ###	Hwy/US Hwy ###
Newton County	Jasper	NC ###	AR/US
Ouachita County	Camden	Ouachita ### Rd	Highway
Perry County	Perryville	Named	AR/US
Phillips County	Helena	Phillips ### Rd	AR/US
Pike County	Murfreesboro	Named	Hwy
Poinsett County	Harrisburg	Named	AR/US
Polk County	Mena	Polk ### Rd	Highway
Pope County	Russellville	Named	Highway
Prairie County	Des Arc and	Named	Highway
Pulaski County	Little Rock	Named	Highway
Randolph County	Pocahontas	Named	AR/US
St. Francis County	Forrest City	SFC ###	AR/US
Saline County	Benton	Named	Hwy
Scott County	Waldron	Named	Highway
Searcy County	Marshall	Searcy ### Hwy	Highway
Sebastian County	Greenwood and	Named	Highway
Sevier County	De Queen	Named	AR/US
Sharp County	Ash Flat	County Road ###	AR/US
Stone County	Mountain View	Named	Highway
Union County	El Dorado	Union ###	AR/US
Van Buren County	Clinton	Named	AR/US
Washington County	Fayetteville	WC ###	Hwy
White County	Searcy	Named	Highway
Woodruff County	Augusta	Woodruff ### Rd	AR/US
Yell County	Danville and Dardanelle	Named	State Highway ###

38 Counties assign a proper name for naming County Roads.

37 Counties assign a number for naming County Roads, and their methods for representing those are vastly inconsistent.

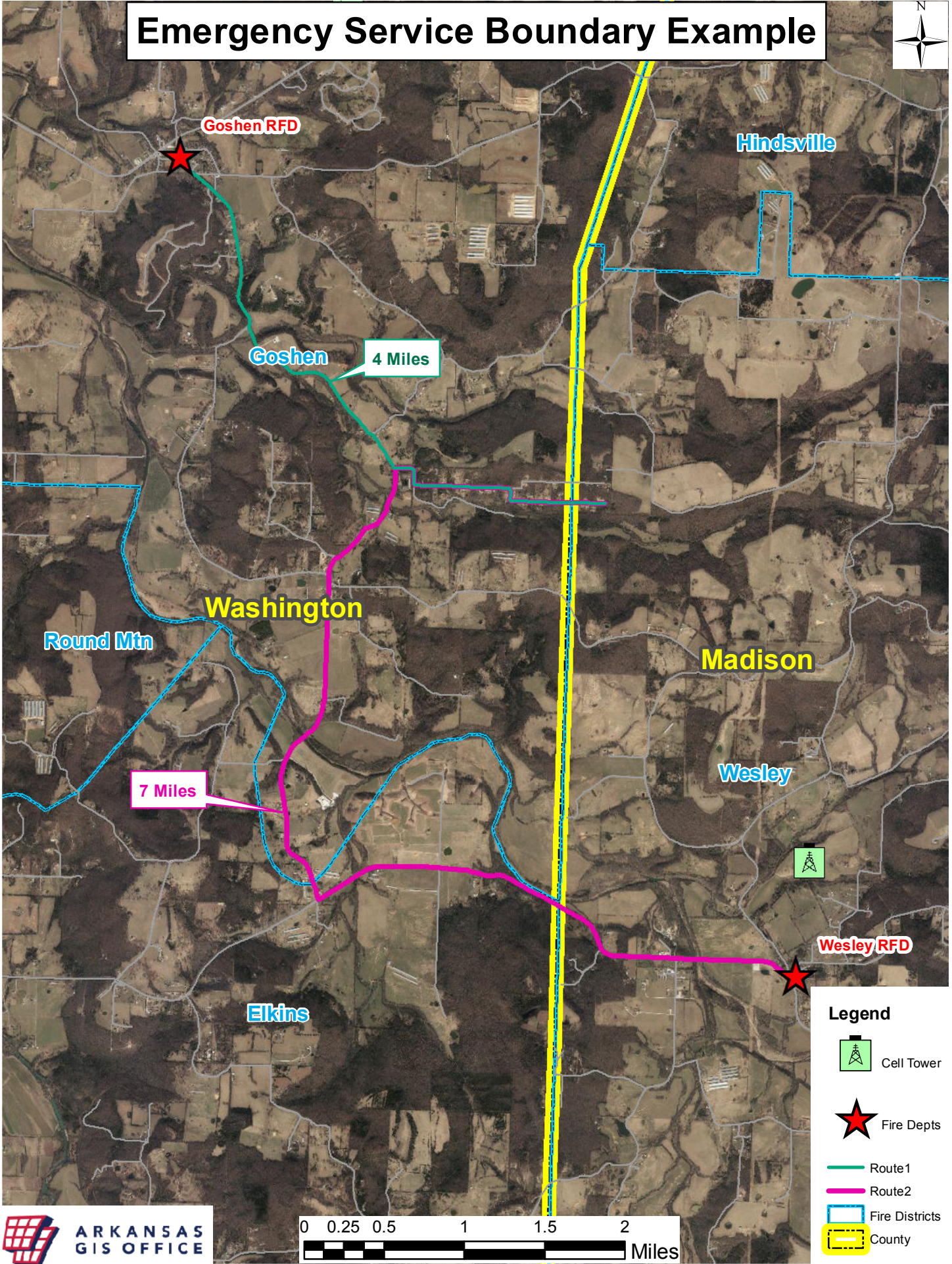
# Inconsistent 9-1-1 Address Assignment Intervals

9-1-1 physical address number assignment intervals in Arkansas are widely inconsistent.

For example in some jurisdictions the prime interval is 52.8 feet (1/100th mile). This yields up to 200 address numbers per mile, 100 odd on one side and 100 even on the other side. The prime interval is used to assign street addresses on all new roads, new extensions of existing roads, un-addressed existing roads, and when converting roads with rural style addressing to city style addressing. Ideally, these intervals between house numbers should be sufficient to allow house number assignment to future principal buildings/properties between existing principal buildings/properties.

- Boone County assigns new addresses every 10.5 feet.
- Calhoun County assigns new addresses every 5.28 feet.
- Cleveland County assigns new addresses every 105.6 feet (Strictly by math, not by decision)
- Other areas assign new addresses every 25 feet and some assign new address numbers every 50 feet.
- White County 50 feet in the county, and 25 feet in the City of Searcy

# Emergency Service Boundary Example



Goshen RFD

Hindsville

Goshen 4 Miles

Washington

Round Mtn

Madison

7 Miles

Wesley

Wesley RFD

Elkins

- Legend**
- Cell Tower
  - Fire Depts
  - Route1
  - Route2
  - Fire Districts
  - County

