

Ouachita River CORCU Correctional Unit

Mission Statement

It is the mission of the Ouachita River Correctional Unit to provide a safe, humane environment for staff and inmates, strengthen the work ethic through teaching of good habits and provide opportunities for inmates to improve spiritually, mentally, and physically. To create a model correctional system by carrying out the intention of the Courts, Governor, Legislature and the Director of the Department of Correction.

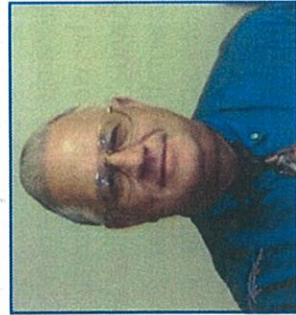
A Message from the Warden

The Ouachita River Correctional Unit (ORCU) is the Department's newest maximum security institution as part of the 2002 special legislative session's call to address prison overcrowding. The facility is located in Hot Spring County approximately 45 miles southwest of the state capital, Little Rock. ORCU is situated on approximately 492 acres of land off of Highway 67 with access to I-30 nearby.

The facility perimeter consists of a double fence with razor wire and a microwave system between the fences. Four armed towers are located around the perimeter. The RSVF building and maintenance building are located within the perimeter. A fueling station, an armory, a dog kennel, a horse barn that also functions as a vehicle repair garage, are located outside of the perimeter. A residential area has been developed for staff housing.

The capacity of the Ouachita River Correctional Unit has increased with the completion of each new phase of construction. In the summer of 2008, at the initial opening, the capacity was 316. In December 2004, phase 2 was completed and the capacity increased to 632. In September 2005, phase 3 housing was completed and the capacity increased to 948. Phase 4 of the facility construction included a 862 bed special needs facility and was financed with tax-exempted bond money. In the Spring of 2010, 360 beds of Phase 4 were opened to bring the capacity to 1298. In January 2012, the remaining portion of Phase 4 was opened including intake, a new hospital, the Residential Programs Unit and the Special Needs Unit. There is approximately 400,000 sq. ft. under roof. ORCU now has a maximum capacity of 1690 inmates.

On behalf of my staff and I, welcome to the Ouachita River Correctional Unit.



M. D. Reed

Facility Tours

In the interest of informing the public of the goals and programs of the Department, the Ouachita River Correctional Unit has been designated as a facility that may be toured by groups from the community. These tours will be conducted in such a manner as to ensure the safety of the visitor, cause little or no disruption of regular unit activities, and allow the visitor, as much as possible, to observe the daily operations of the unit.

To schedule a tour, contact Ida Works in Constituency Services at Central Office in Pine Bluff. Tours are held between the hours of 8:00 a.m. and 4:30 p.m., Monday through Friday. The minimum age of persons touring the Unit is 14.



Departmental Staffing

The Ouachita River Correctional Unit has approximately 550 full time employees. The breakdown of staff at ORCU

Majors-2	Captains-5	Lieutenant-15
Sergeants-54	CO-1 & CO-2 - 303	Food Service-8
Administrative-52	ADC School- 9	ADC Vo-Tech- 2
Mental Health- 50	Maintenance- 5	Construction- 8
	Corizon (Contract)- 93	

Accreditation

The Ouachita River Correctional Unit was first accredited by the American Correctional Association in August 2006.

In 2007, the Arkansas Department of Correction received the coveted Golden Eagle Award from the American Correctional Association's Commission on Accreditation. The award is for those states whose institutions and programs are completely accredited by the ACA.

The benefits of being accredited are many and include:

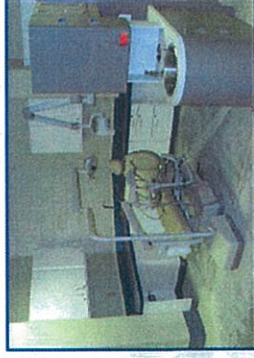
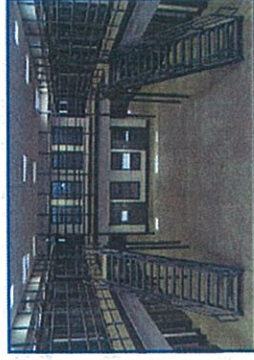
- ◆ Improved staff training and development.
- ◆ Assessment of program strengths and weaknesses.
- ◆ Establishment of measurable criteria for upgrading operations.
- ◆ Improved staff morale and professionalism.
- ◆ Safer environment for staff and offenders.
- ◆ Reduced liability insurance costs.
- ◆ Performance-based benefits.



ACA
FOUNDED 1870

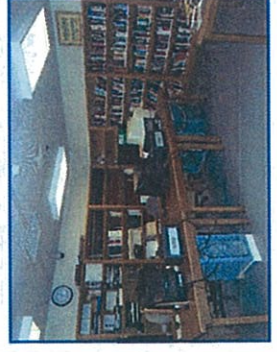
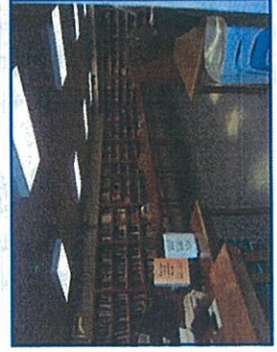
Special Needs Facility

In January of 2012, the Department of Correction opened its state-of-the-art Special Needs Facility at Ouachita River Correctional Unit. This unit is designed to meet the needs of those with chronic medical problems, therefore the medical area is quite extensive. The Special Needs Unit has been under construction since 2006. This addition houses a 72-bed hospital and a 40-bed special services area. Male intake, sheltered living, special programs and permanent bed assignments are also a part of this addition.



Library/Law Library

The Library serves as a legal resource center and provides periodicals and a good selection of best seller fiction. The majority of the books are donated from libraries and civic groups. Every inmate has a daily opportunity to browse the library. Law Library is available upon request. The library has an inventory of over 500 magazines, 5000 books, and a traditional selection of legal manuals, guides, State Annotated Code, and the West Law legal database.



Inmate Housing

General population housing consists of three separate housing units and nine open barracks. New commitments are held in the intake barracks.

Each housing unit is made up of four separate barracks that have a housing capacity of 316 inmates. Each of the these barracks is designed in a three tiered fashion, with 40 two-man cells. Six of the barracks contain 2 handicapped cells, which are one-man cells. The design concept is a basic pod design.

Each open barrack is fashioned in dormitory style and has a housing capacity of 40 inmates in each barrack. The intake barracks will house 294 inmates with an average of 45 inmates being received from county jails each day.



Isolation Housing

In addition to the three housing units, open barracks, and intake barracks there are two 80-bed isolation units. These units consist of one-man isolation cells used for punitive isolation, disciplinary court review, and treatment precaution.

RSVP

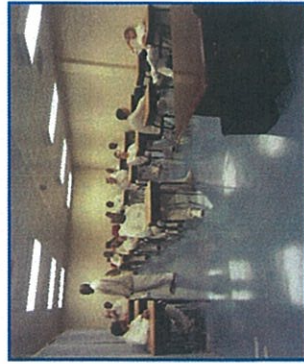
The Reduction of Sexual Victimization Therapeutic Community (RSVP TC) program is an intensive inpatient course of treatment, typically consisting of four phases. RSVP is a year long program and can treat up to 238 offenders at any one time. The program is divided into four phases and each phase progressively teaches victim awareness, thinking errors that led to offending, adequate coping responses for high risk situations, with a goal of total abstinence from sexually deviant acting out. All of the participants of the program are housed together, divided within three different barracks. Housing the participants together helps from the "therapeutic community" format, whereby each community member is held accountable for others. The goal of the program is for the residents to be released into society and create "no more victims."



Educational Programs

Arkansas Correctional School (ACS)

The Department of Correction has adopted a mandatory school attendance policy. Any inmate without verified proof of a high school diploma or GED, regardless of age, job assignment, amount of time being served, or standardized test scores, must attend school until they pass the GED test.



Riverside Vocational Technical School

Riverside Vocational Technical School's purpose is to extend an opportunity to all students to learn a trade with entry level skills; thus expanding their employability skills and making them more marketable. The Office Technology class being offered at the ORCU is a full program course, which is made up of 1440 hours of hands on learning. Upon completion of both required clock hours and required competencies, students will be issued a Certificate of Completion. Vo-Tech began at ORCU in January 2009.

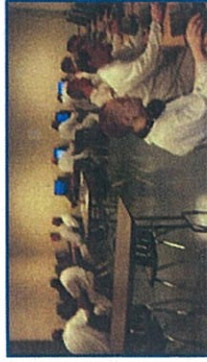
NEW VOCATIONAL TRAINING

Riverside Vocational Technical School currently offers two programs at the Ouachita River Unit, Office Technology and Reentry and Employability. Riverside plans to add additional programs in the near future. Continued on page 13

Educational Programs

WAGE Program

Workforce Alliance for Growth in the Economy (WAGE) is a work-based certification program conducted through a partnership with College of the Ouachitas, the Department of Workforce Service, and ORCU. WAGE offers three state-authorized certificates: employability, industrial, and clerical. WAGE is a self-paced combination of computer oriented, individual, and small group instruction classes which usually take 80-90 days to complete based on the student's performance.



ADC GED Graduation



Treatment Programs

Parenting Class

The parenting class is a six week course with classes meeting once a week for 2 hours. It uses the group setting and interactive lessons to teach the participants appropriate and successful parenting skills.

Anger Management

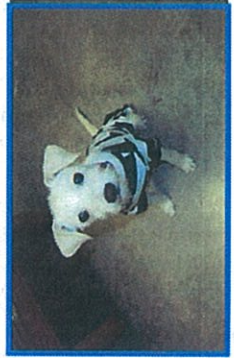
Anger Management is an eight week course with classes meeting 3 times a week for 2 hours. It is designed to teach the individual how to better manage their anger instead of letting their anger manage them.

Paws in Prison Program

In December 2011, ORCU received it's first dogs in the Paws in Prison Program. Paws in Prison is made possible through ADC's partnership with Central Arkansas Rescue Effort (C.A.R.E.) for Animals, other animal shelters and advocate groups in the state. Selected inmates have the opportunity to become trainers of rescue dogs in the program.

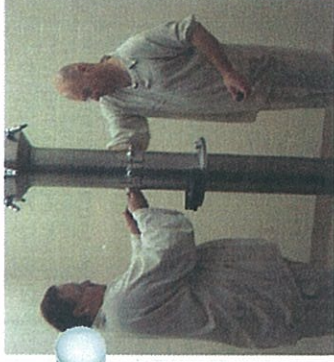
The program is three-fold. The Paws in Prison program will reduce the number of animals who perish by better preparing them to be loving, obedient, and adoptable pets. The program will give inmates the skills necessary to support successful rehabilitation and reentry—and ultimately improve public safety. At the same time, this is an opportunity for the inmates to do something for the communities in Arkansas.

Paws in Prison is supported by private donations. There is no state budget for the program.



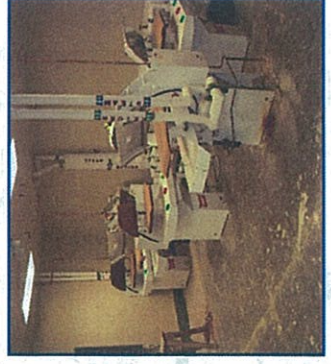
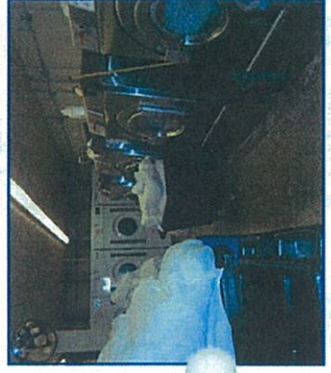
Work Assignments

Upon arrival at the unit, each inmate goes before a Classification Board to receive a job assignment. The jobs an inmate receives is dependent upon his medical status and good time class. Some inmates are on a half-day work/program assignment. The work program is designed to develop the work ethic necessary to compete in the workplace once the inmate is released.



Laundry Services

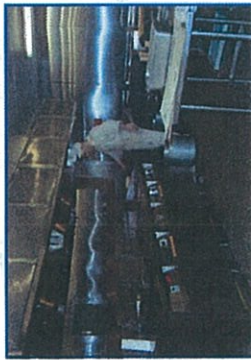
Inmates are provided with daily central laundry service. Clothing is turned over to an inmate worker who is a part of the laundry team. He takes an inventory and returns the items to the inmate the following day during "clothing call." All necessary clothing and hygiene items are provided to each inmate by the laundry, including linens, clothing, wash clothes, towels, toilet paper, soap, and razors.



Food Service Preparation

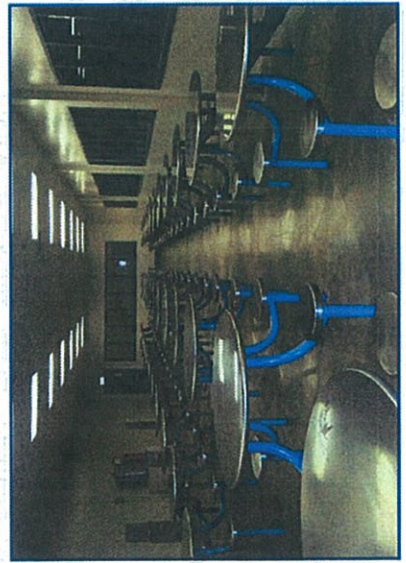
The ORCU food service staff provides nutritious meals for inmates and staff. The staff ensures meals are palatable and at or above the nutritional requirements. Staff provides special meals for the inmate population during holidays to boost morale. Advanced cooking systems allow for the meals to be prepared and served quickly at the proper temperature.

Inmate meals are served three times a day beginning with breakfast at 4:00 a.m., lunch at 10:00 a.m., and dinner at 3:00 p.m. Staffing includes 7 free world and 162 inmates for manpower assignments.



Inmate Dining

The Ouachita River Unit has four (4) dining halls, like the one pictured below, with a combined seating capacity of 444.



Riverside Vocational CONTINUED

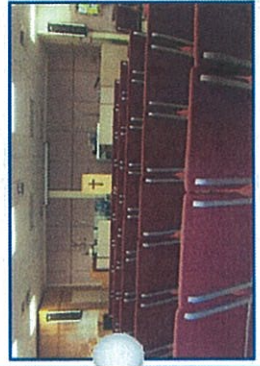
The Office Technology curriculum is designed to Prepare student for employment using a variety of software packages. Entry-level skills are taught in: database, spreadsheets, and word processing. Students are also taught the major features of Windows XP, and integrated applications are taught to enhance software competencies equipment.

REENTRY/EMPLOYABILITY

This program is designed to prepare students for reentry back to society and to provide them with the necessary skills to obtain & maintain employment.

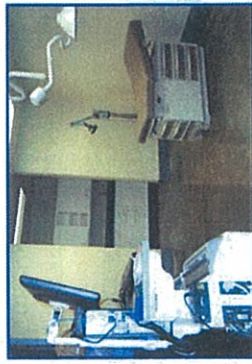
RELIGIOUS SERVICES

The chapel/multi-purpose room serves as a multi-faith, multi-denominational meeting room. Worship services are provided multiple times weekly for the majority Christian population, but it is also used for other religious services on a regular basis. The room can be used as a classroom, when needed, made possible by chairs that link together to make pew-like rows, or that can be separated to place around tables. State of the art sound and audio/visual equipment allows for an excellent learning environment. The Chapel also has a projector and full size screen for faith oriented videos and seminars.



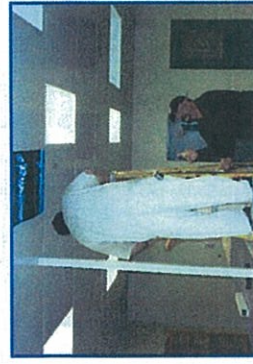
Corizon Medical Services

The hospital and infirmary at ORCU is operated, through contract, by Corizon Medical Services, which takes care of all the medical needs for the Department of Correction. A majority of the medical needs for inmates are taken care of here on the Ouachita River Unit campus. We have a full medical staff, a unit doctor, a unit dentist, a full time nursing staff, and dental hygienists. Should an inmate's medical needs become greater than can be provided by the infirmary, the inmate is taken to the hospital here or, if deemed necessary, to one of the medical hospitals around the state.



Maintenance

The Ouachita River Unit also has a fully functional maintenance department. All of the day to day operations and repairs to the unit are taken care of by the staff and inmates that work in maintenance. Currently, there are three (3) maintenance supervisors, who oversee 27 inmates that work on the electrical, plumbing HVAC, telephones, etc. around the unit.



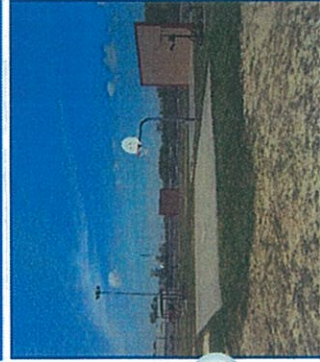
Recreation Programs

Recreation programs include athletics, other sporting activities like horseshoes, and arts & crafts. This program is designed to promote positive attitude change by improving the self-image and raising self-esteem. A comprehensive recreation program enhances the inmate's quality of life. Recreation programs are available to all inmates that include leisure time activities and outdoor exercise. Inmates are allowed to exercise according to a published recreational schedule. The schedule includes both outdoor and indoor exercise activities to ensure each inmate is offered an hour of exercise daily. There is also an exercise group offered three days a week for those inmates who are designated Chronic Care Patients by the infirmary.

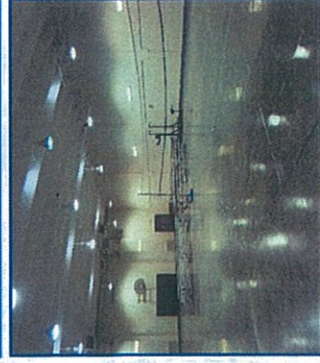
Intramural Sports

In addition to the recreational activities offered at the unit on a daily basis, the recreation department also offers four different intramural sports leagues throughout the year. We have a Winter Volleyball League, a Spring Basketball League, a Summer Softball League, and a Fall Football League. The inmates in each housing unit put their teams together based on which housing unit they live in. Each team is coached and the games are refereed by an inmate. This is a great way to promote a healthy spirit of competition and team spirit.

Outside Recreation Yard



Indoor Recreation Gym



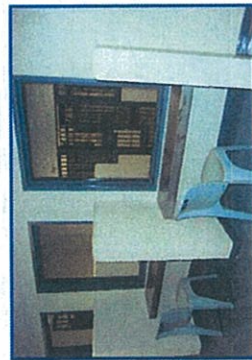
Visitation

The Department of Correction and the Ouachita River Correctional Unit promotes the family by encouraging them to visit their incarcerated loved ones while they are at our unit. Visitation hours are from 12:00 p.m. to 4:00 p.m. every Saturday and Sunday. Class I inmates may have visitors every weekend and class II, III, and IV inmates may have visitors every other weekend. Inmates may have up to four (4) visitors at one time. Each visitor must submit to a background check prior to the visit. While at visitation, families have an opportunity to purchase food from the vending machines as well as the Inmate Council concession stand.



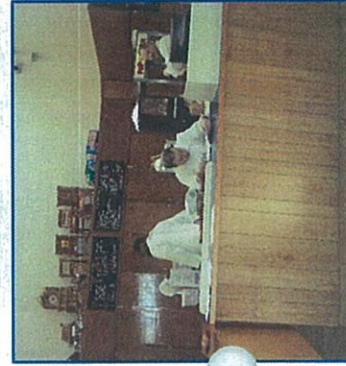
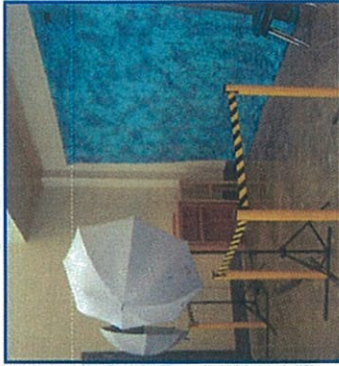
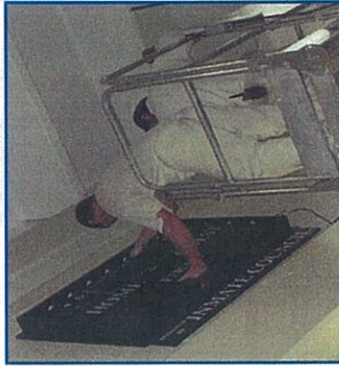
Non-Contact Visitation

For those inmates who have certain visitation restrictions, their visitation is conducted in the non-contact visitation area. Inmates in punitive isolation are offered a chance to receive a visit once a month on the first Wednesday of the month. These visits must be set up in advance and the Warden or designee must approve all visits.



Inmate Council

The mission of the Ouachita River Correctional Unit Inmate Council is to serve as a viable tool to increase the level of credibility with both the inmate population and the Unit Administration. The council promotes fund-raising programs to benefit the needs of the inmate population, as well as to facilitate improvements in the institution. The main source of income for the council comes from concession sales during visitation. The council then uses the profits from those sales to give back to the population. Some of the projects the council has funded include: installing ear phone jacks on the racks of the benches in the dayroom for watching television, giving a donation to the chapel building fund, a Christmas toy give-away for children who come to visitation during the holidays, recognizing all the unit veterans on Veteran's Day, installing covered benches on the recreation yards, Christmas dinner for the entire population, and a yearly movie license.

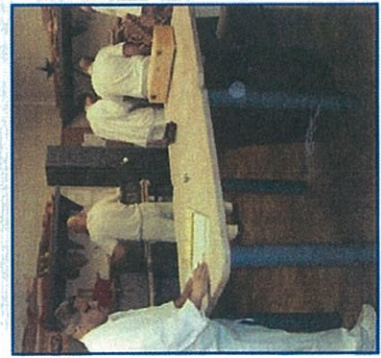
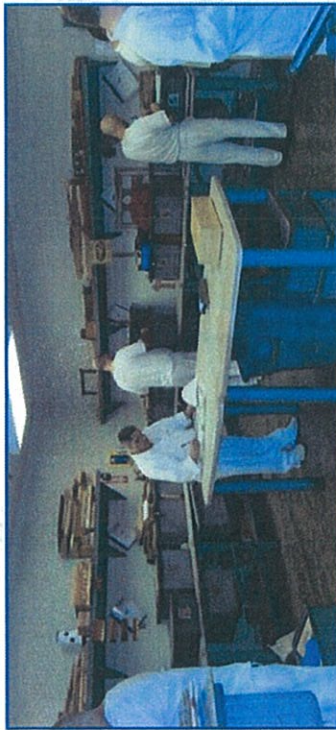


Hobby Craft—Leather and Wood

The Hobby/Craft program is available to a pre-determined number of participants. Each cardholder can purchase pre-approved wood and leather products along with the tools used to make items to sell to employees and visitors through a hobby/craft "contract." Tools and supplies are subject to accreditation and security standards to insure that they are used and inventoried appropriately.

To participate in the program:

- ◆ The inmate must be at least a Class I status for 90 days.
- ◆ The inmate must not have been found guilty of a Major Disciplinary within 90 days.
- ◆ The inmate applying for a leather or wood card must not have an active medical restriction in his records prohibiting him from working in a dusty or chemical environment.



Regional Maintenance

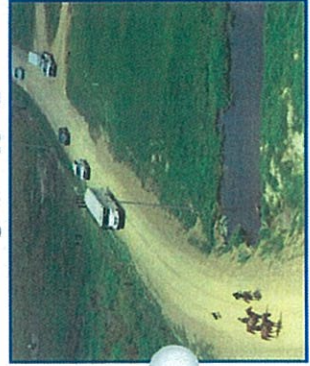
The Arkansas Department of Correction provides an inmate work force for approved community projects, counties, cities, state or federal governments or other areas as agreed upon by these agencies and the Department to enhance a good community relationship and to provide inmates with an opportunity to repay society. Selected inmates provide services such as: labor; maintenance, construction, cleanup, etc.

Inmates selected for Regional Maintenance must meet specific criteria to participate in this work force. Inmates that are serving a sentence for Rape, First Degree Murder, a Capital offense, Kidnapping, Escape, serving a sentence of Life, Life without Parole, or be under sentence to be executed are not eligible. Regional Maintenance services can be requested by members of the local community through the office of the Warden, Assistant Director or Institutional Services and/or the Director.

Dog Kennel

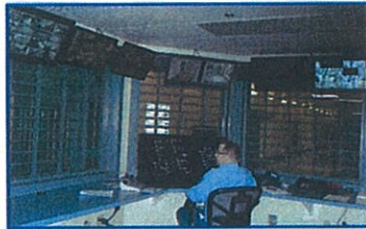
In the event of prisoner escape or chase, the Ouachita River Correctional Unit's Dog Kennel has search dogs available for immediate deployment. Before they are trained, the dogs must exhibit search instincts apt for tracking humans. They can track on all types of terrain and under any weather condition. Approved breeds include bloodhound and/or bloodhound mix. Due to their superior sense of smell, the trained law enforcement canine is a valuable tool in the corrections environment.

Properly trained and handled canines provide one of the finest non-lethal aids in the prevention of escapes. Requests for canine teams to perform in routine and emergency situations for other law officials are made through the appropriate Assistant Director and/or Director.



Unit Control Centers

Officers assigned to North Control, Central Control, and South Control supervise the movement of inmates between the barracks and their destination point by notifying barracks officers at the appropriate times for all Work/Program Calls, Meal Calls, Church Calls, Medical Calls, Exercise Calls, Notary Calls, and Library Calls. This is done in a manner to manage overflow of inmate movement in the hallway. They also control the movement of inmates, staff, and Non-Security employees between the Administrative and Security section of the building, making sure that only authorized personnel and inmates are admitted into restricted areas. Count Time and Count Clear are communicated to all areas over the radio from the Control Center .



Employment Opportunity

The A.D.C. is an Equal Opportunity Employer. In this criminal justice field, there is career opportunity with advancement potential to fit your drive. If you would like to be a member of an elite team contact our Human Resources Manager at (501) 467-3441.

