

## Exhibit D

### Agency Overview

1. Provide agency mission/purpose in 100 words of less.

ADEQ's mission is to advance the quality of life of Arkansans through the protection, enhancement, and restoration of the environment; to lead in protecting the quality of air, water, and land resources; and to support environmentally responsible economic growth.

2. How is the agency structured? Provide organizational chart if available.

The Arkansas Department of Environmental Quality (ADEQ) is undergoing a reorganization that is designed to achieve multiple internal efficiencies-including consolidating resource savings, streamlining work processes, improving response time with Arkansans, and increasing inter-divisional cooperation. ADEQ is utilizing our current work force to its maximum efficiency and evaluating whether to fill open positions. As part of our reorganization, we have realigned the twelve divisions in the agency into three program offices and two support offices. The three program offices are the Office of Air Quality, the Office of Water Quality, and the Office of Land Resources. The two support offices are the Office of Law and Policy and the Office of Operations and Outreach. ADEQ's reorganization is part of an overall plan to be proactive in establishing cost-saving measures within ADEQ. All five offices have an Associate Director. All five Associate Directors report to the Director. See attached organizational chart that was submitted in our 2018-19 budget to DFA.

3. Does agency answer to executive branch or 3rd party board, commission etc?

ADEQ answers to the Governor's Office.

4. Link to rules and regulations currently in place by agency/board/department or commission.

<https://www.adeg.state.ar.us/regs/>

### Organizational Profile

1. List total number of part/full time employees (not positions), FTE.

ADEQ has 339 employees (333 full-time/6 part-time)

2. Total number of budgeted positions.

All of ADEQ's positions are budgeted positions. ADEQ's current appropriation act is 422 positions. This includes the PC&E Hearing Officer and the Legal Services Specialist.

3. Total personnel expenditures including salary, benefits etc.

The FY16 personnel expenditures total for ADEQ would be \$18,412,007.28. This figure represents the total reported AASIS Salary Expense for FY16 less the NBR (non-budget related) items.

4. Five highest paid employees and their salary.
  - a. Becky Keogh \$130,249.60
  - b. Julie Chapman \$107,398.10
  - c. Charles Moulton \$102,806.91
  - d. Stuart Spencer \$96,400.51
  - e. Caleb Osborne \$96,227.46

#### Fiscal Review

1. Agency budget last 10 years.

Please see the attached spreadsheet. The data is taken from DFA website:  
<http://www.dfa.arkansas.gov/offices/budget/Pages/fundedBudgets.aspx>

2. Revenue sources including all fees etc. and expenditure history.

Please see the link below. On pages 183 – 189 (192 – 198) the ADEQ portion is listed.

<http://www.arkleg.state.ar.us/assembly/2015/Summary%20Budget%20Manuals/Abbook2014MainDoc.pdf>

3. Fund balance and 10 year history.

Please see the shaded columns in the attached spreadsheet. The data is taken from DFA website:  
<http://www.dfa.arkansas.gov/offices/budget/Pages/fundedBudgets.aspx>

4. Carryover fund authorization?

Yes. **Section 39 of Act 274 of 2014** allows ADEQ to transfer from various department funds to the Arkansas Department of Environmental Quality Fund Account, the sum of \$1,500,000 for the exclusive purpose of supplementing

funding for personal services and operating expenses for the Department's Environmental Quality - State Operations. Further it provides that funds which remain at the close of the fiscal year shall be carried forward and made available for the same purpose for the following fiscal year.

Other Information

1. Link to audit findings and 10 year history. Please provide explanation for any repeat findings.

FY 2014 <http://www.arklegaudit.gov/pdf.aspx?id=SR2593014>

FY 2013 <http://www.arklegaudit.gov/pdf.aspx?id=SR2593013>

FY 2012 <http://www.arklegaudit.gov/pdf.aspx?id=SR2593012>

FY 2011 <http://www.arklegaudit.gov/pdf.aspx?id=SR2593011>

FY 2009 & 2010 <http://www.arklegaudit.gov/pdf.aspx?id=SR2593010>

FY 2008 <http://www.arklegaudit.gov/pdf.aspx?id=SR2593008>

FY 2007 <http://www.arklegaudit.gov/pdf.aspx?id=SR2593007>

FY 2006 <http://www.arklegaudit.gov/pdf.aspx?id=SR2593006>

FY 2005 <http://www.arklegaudit.gov/pdf.aspx?id=SR2593005>

2. Number of vehicles (fleet rotation or management plan).

ADEQ has 114 vehicles in our agency's fleet.

3. Top 10 vendors or subcontractors by dollar amount.

VENDOR	PURPOSE	EXPENDITURE	ONE TIME/MULTIPLE?
AXIOO CONSTRUCTION INC	ABA RECLAMATION	\$2,553,789.36	MULTIPLE PROJECTS
KOLB GRADING	ABA REMEDIATION	\$2,075,508.26	ONE TIME PROJECT
DENOVO CONSTRUCTORS INC	ABA REMEDIATION	\$1,834,651.73	ONE TIME PROJECT
PICKETT	ABA REMEDIATION	\$1,656,912.17	ONE TIME PROJECT
SOUTHERN ENVIRONMENTAL	TGS	\$801,187.62	MULTIPLE

MANAGEMENT			PROJECTS
INLAND WASTE SOLUTIONS	TGS	\$651,613.04	ONE TIME PROJECT
STEARNS CONRAD & SCHMIDT	PSC	\$587,409.18	MULTIPLE PROJECTS
FTN	PSC	\$369,415.57	MULTIPLE PROJECTS
POLLUTION MGMT	PSC	\$245,906.22	MULTIPLE PROJECTS
ENSAFE	PSC	\$193,996.15	MULTIPLE PROJECTS
THE SOUTHERN COMPANY	PSC	\$155,711.49	MULTIPLE PROJECTS
DELL MARKETING	COMMODITY	\$70,061.04	MULTIPLE PROJECTS

PSC - Professional Service Contract

TGS - Technical General Service Contract

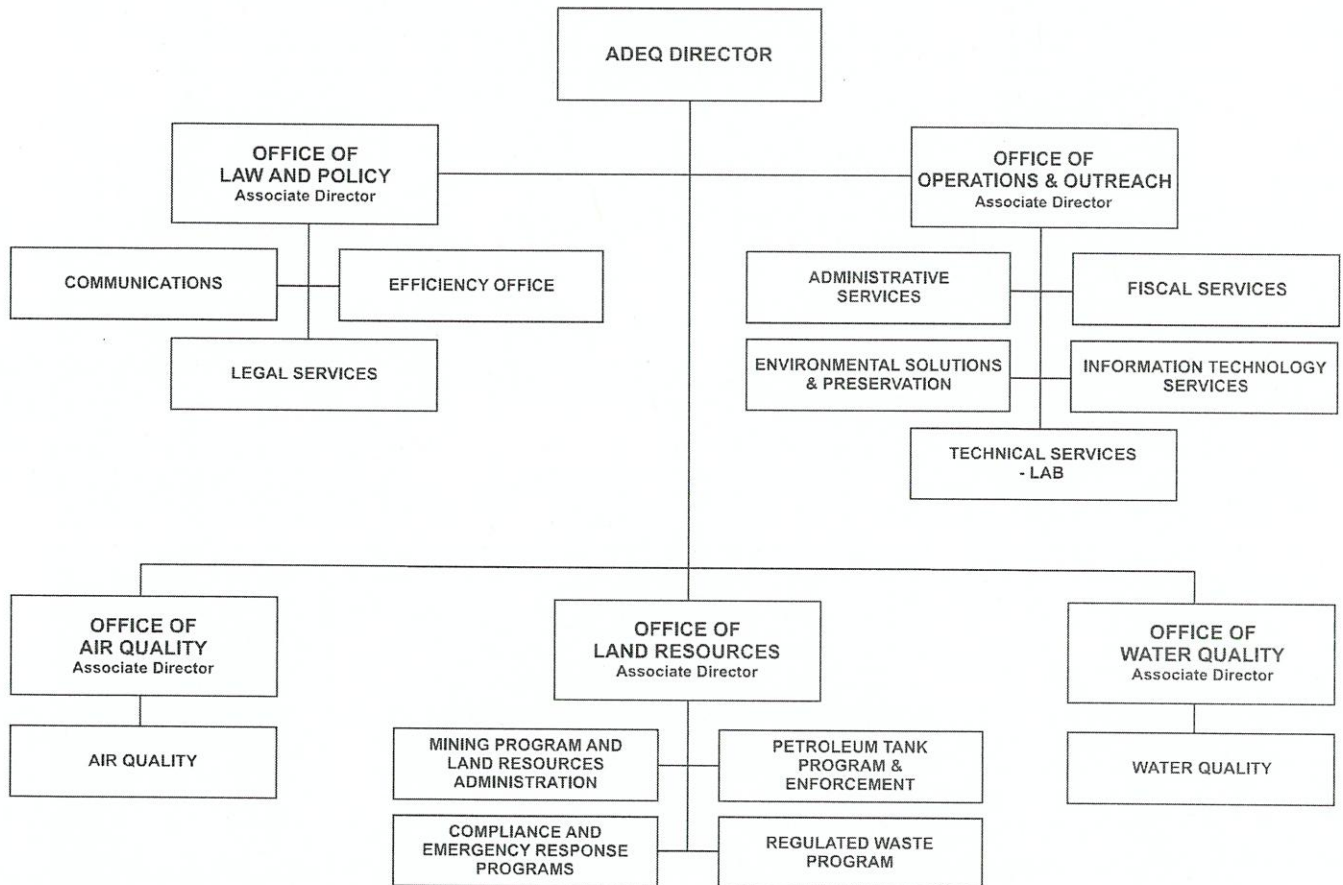
ABA RECLAMATION – Restoration of land for use

ABA REMEDIATION – Work on an ongoing situation project to protect against further damage

ABA- Arkansas Building Authority

# ARKANSAS DEPARTMENT OF ENVIRONMENTAL QUALITY

## Organizational Chart



Fiscal Year	General Revenue	Merit Adjustment	General Revenue Fund Balance	Special Revenue	Special Revenue Fund Balances	Federal Revenue	Federal Revenue Fund Balances	Revolving Funds	Revolving Fund Balance	Cash Funds	Cash Fund Balances	Other Funds	Other Fund Balances	Total
2016	\$ 4,256,114	\$ 37,457		\$ 15,015,000	\$ 2,866,474	\$ 19,225,000	\$ 393,648			\$ 30,000	\$ 539,660	\$ 29,793,570	\$ 34,351,613	\$ 105,901,419
2015	\$ 4,416,717			\$ 15,243,614	\$ 5,636,456	\$ 18,626,685	\$ 607,764			\$ 30,000	\$ 539,660	\$ 34,192,665	\$ 23,634,173	\$ 102,927,734
2014	\$ 4,414,235		\$ 111,817	\$ 15,286,649	\$ 5,188,964	\$ 19,146,648	\$ 92,977			\$ 30,000	\$ 539,660	\$ 22,829,562	\$ 31,914,815	\$ 99,555,327
2013	\$ 4,214,610	\$ 101,775	\$ 610,000	\$ 15,324,206	\$ 5,575,064	\$ 18,023,784	\$ 1,630,629	\$ 37,000	\$ 532,660			\$ 22,036,210	\$ 30,800,225	\$ 98,784,388
2012	\$ 4,277,042	\$ 256,757	\$ 438,951	\$ 15,266,156	\$ 5,080,031	\$ 25,892,926	\$ 348,820	\$ 48,736	\$ 557,272			\$ 22,788,265	\$ 30,098,052	\$ 104,796,251
2011	\$ 4,214,610			\$ 15,091,347	\$ 13,348,450	\$ 28,381,736	\$ 695,574	\$ 44,623	\$ 560,671			\$ 24,468,759	\$ 21,023,595	\$ 107,829,365
2010	\$ 4,012,396			\$ 15,962,626	\$ 10,836,829	\$ 27,662,213	\$ 817,453	\$ 97,902	\$ 509,517			\$ 22,915,726	\$ 22,504,402	\$ 105,319,064
2009	\$ 2,636,848	\$ 31,194		\$ 6,392,871	\$ 19,031,073	\$ 25,682,284	\$ 900,000	\$ -	\$ -			\$ 12,141,435	\$ 39,451,254	\$ 106,235,765
2008	\$ 2,569,753	\$ 38,015		\$ 26,136,840	\$ 11,544,133	\$ 24,987,839	\$ 1,178,204	\$ 89,366	\$ 1,068,168			\$ 10,333,613	\$ 24,772,545	\$ 102,680,460
2007	\$ 2,503,977	\$ 12,920	\$ 525,261	\$ 22,303,918	\$ 12,909,479	\$ 23,785,324	\$ 3,395,539	\$ 121,389	\$ 1,033,775			\$ 10,495,442	\$ 24,256,317	\$ 101,343,341