



Quarterly Performance Report

3RD AND 4TH QUARTERS OF SFY 2018

JANUARY 1, 2018 – JUNE 30, 2018



January 1, 2018, through June 30, 2018

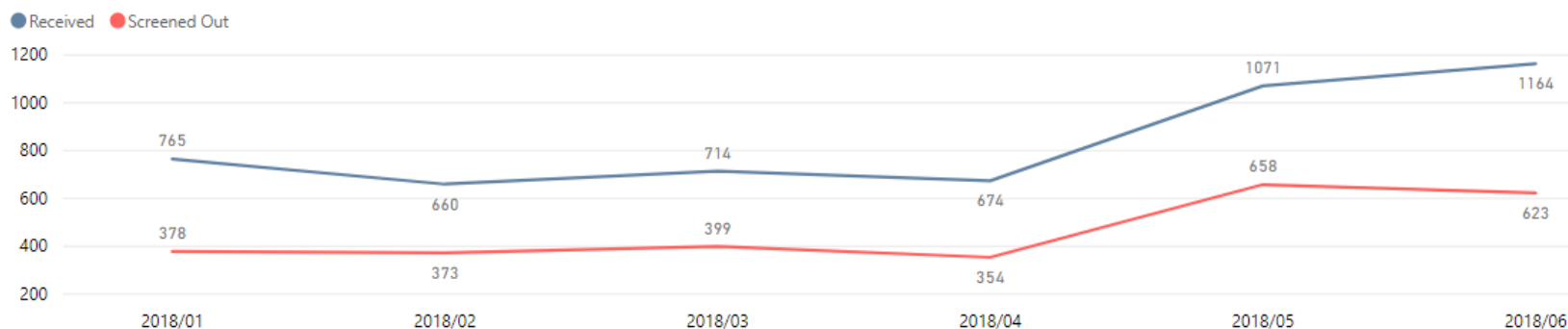
Total Complaints Received	Total Screened Out	Percent Screened Out	Investigations Opened	Investigations Closed	Active Investigations
5048	2785	55.17%	2263	2930	713

Quick Facts

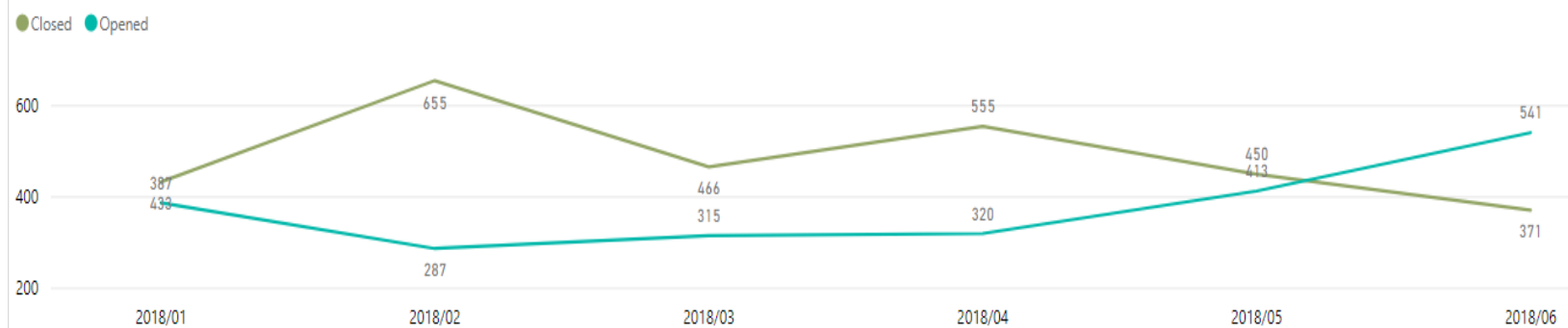
For APS to investigate and take action, the law requires the alleged victim to be cognitively or physically impaired and unable to protect himself or herself from abuse, neglect, or exploitation.

APS investigates allegations of physical abuse, psychological abuse, sexual abuse, caregiver neglect, self-neglect, and exploitation.

Complaints Received and Screened Out by Month



Opened and Closed Investigations

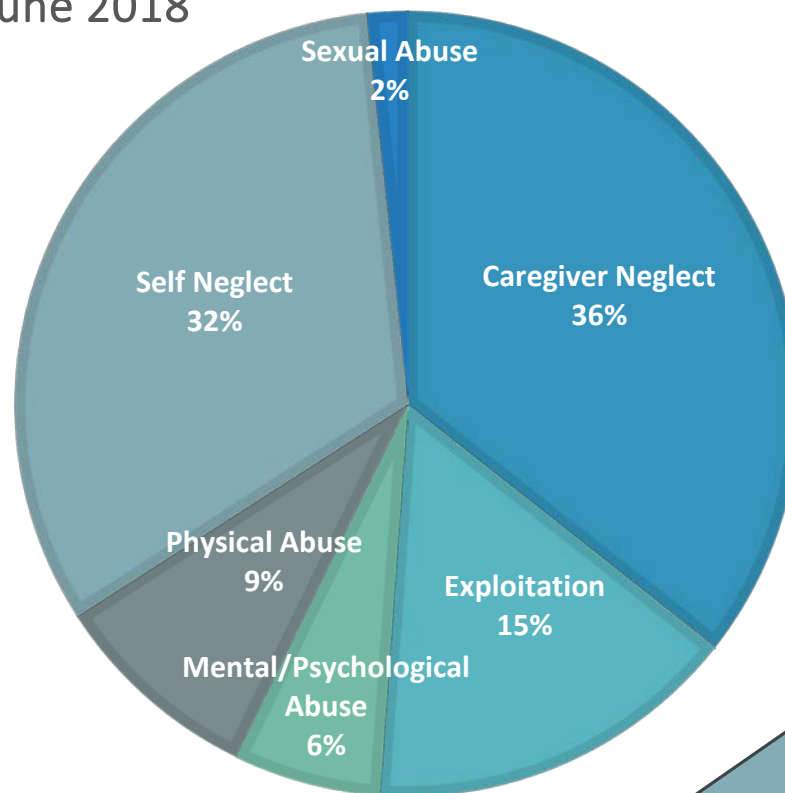




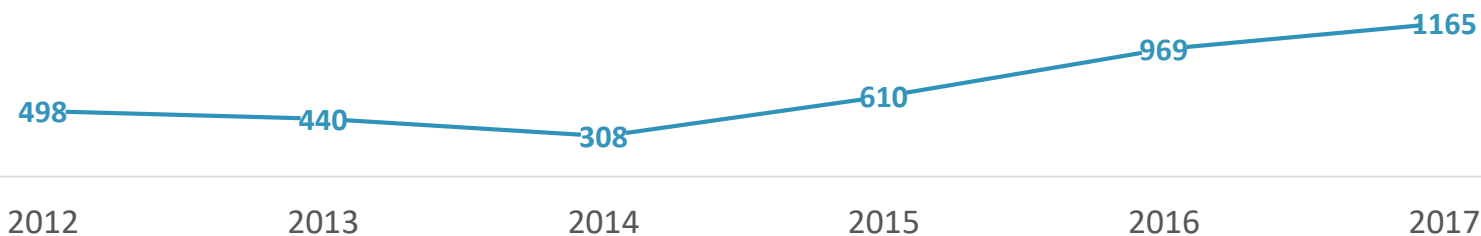
Quick Facts

Due to the explosion of the elderly population (i.e., the aging baby boomer generation), financial exploitation of the elderly is likely to increase. Financial exploitation is recognized as one of the fastest growing areas in APS nationally (NAPSRC & NASUAD, 2012). The most common forms of financial exploitation range from scams, misuse of power of attorney, credit cards (misuse or identity theft), bank account withdrawals, and changes in house ownership (either through deeding property or through deception; Gunther, 2011; Gunther, 2012). Many offenders use more than one method of exploitation (Gunther, 2011; Gunther, 2012; Thomas, 2014).

Distribution of Allegations Investigated January – June 2018



NUMBER OF EXPLOITATION ALLEGATIONS INVESTIGATED BY YEAR



Self-neglect is the most common category of **substantiated** reports.



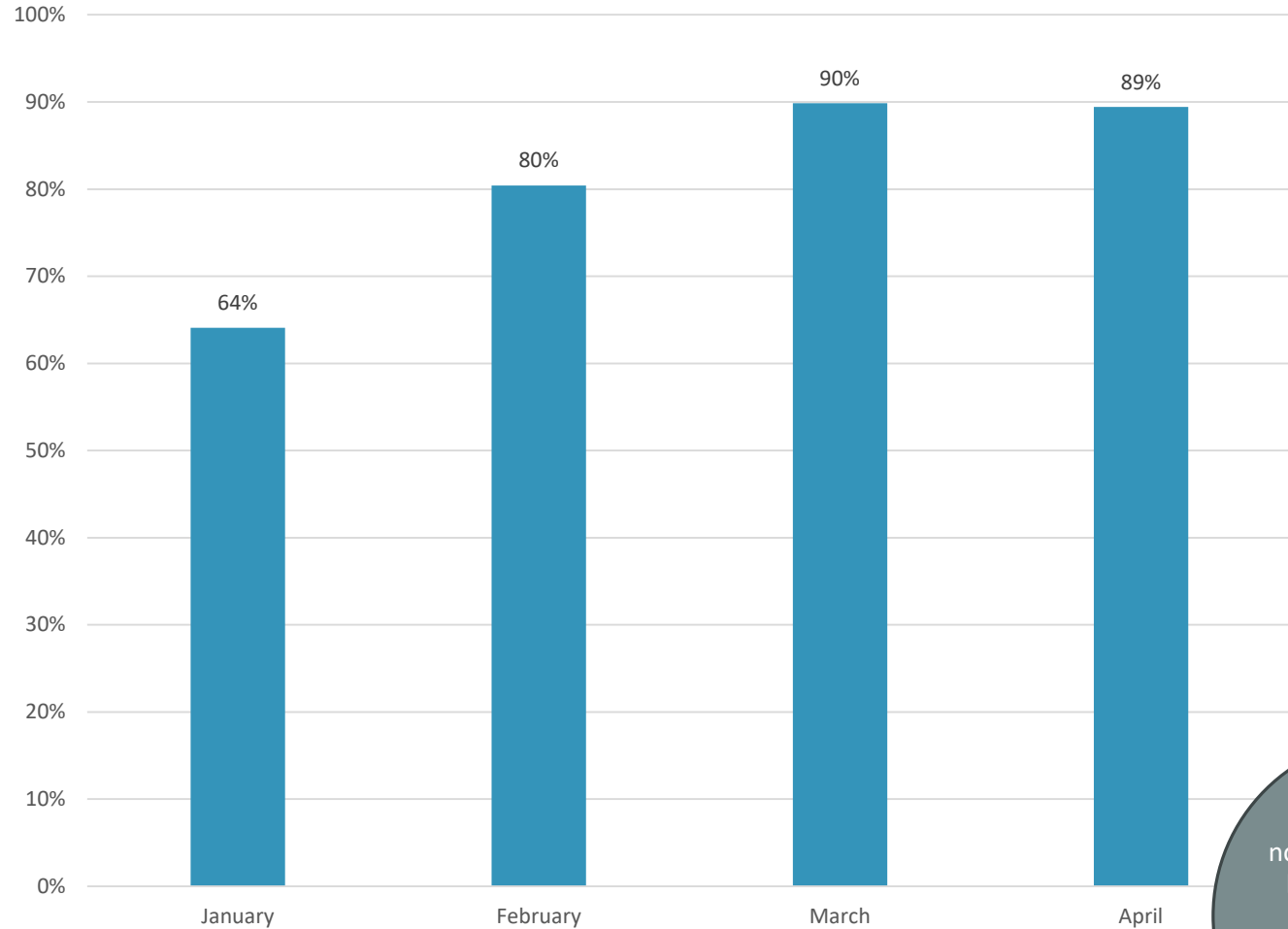
Quick Facts

The law requires that APS complete its investigations within 60 days of receipt of the report.

APS completed 81% of its investigations on time during the first four months of the year.



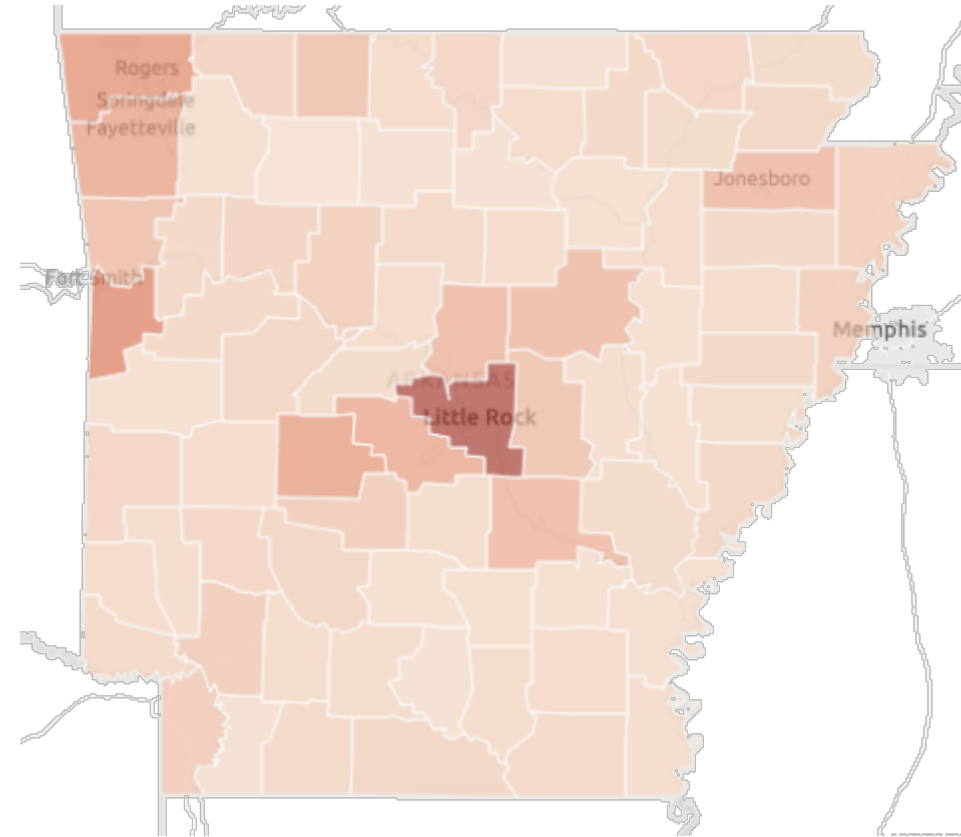
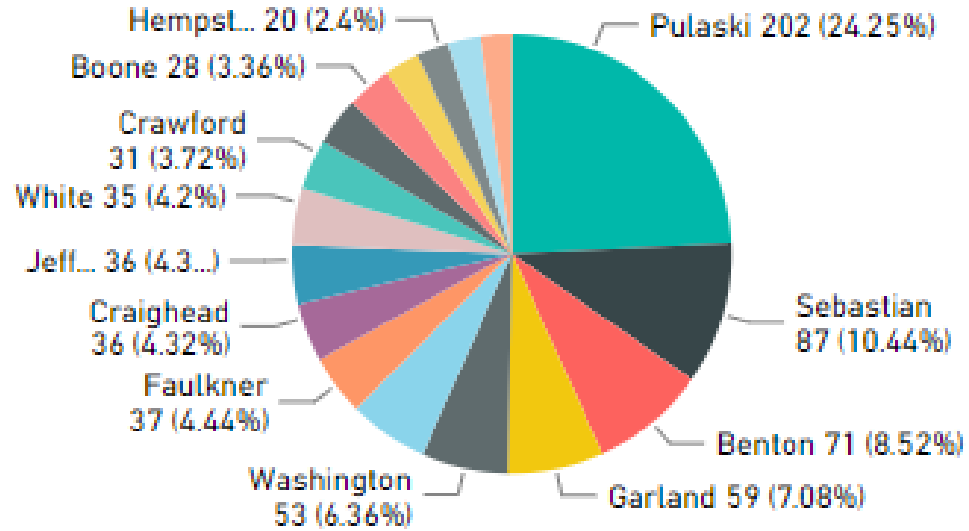
Timely Completion of Adult Maltreatment Investigations
(P1 and P2 combined)



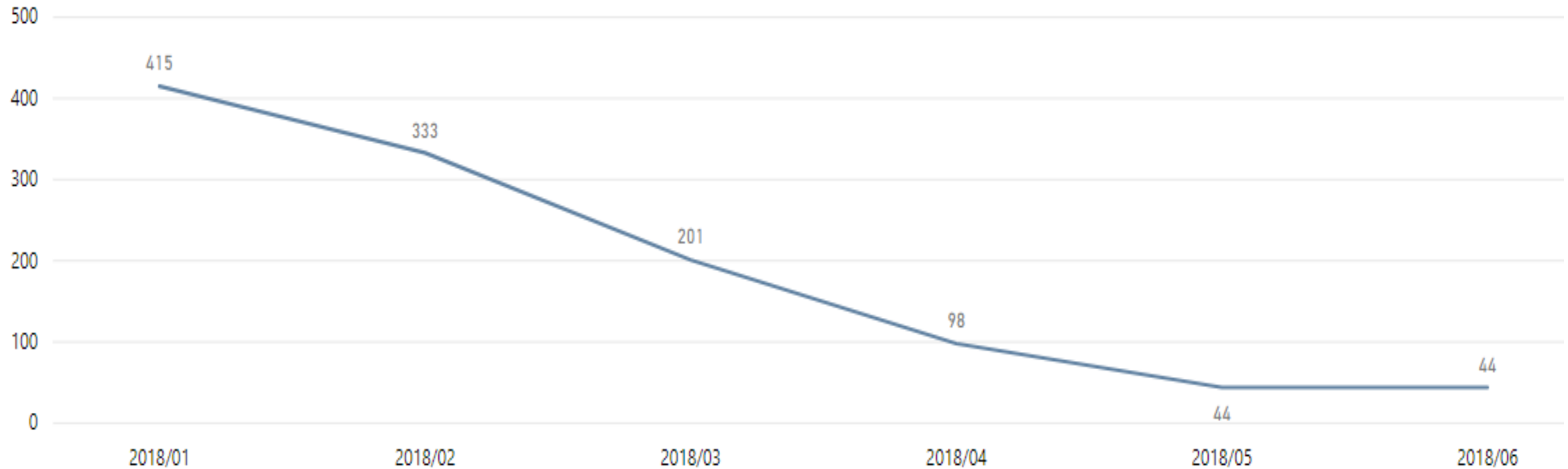
May and June are not reported here, as both months have investigations still open and within the 60-day period of investigation.

Location Distribution of Q4 Investigations

Top 15 Investigations by County

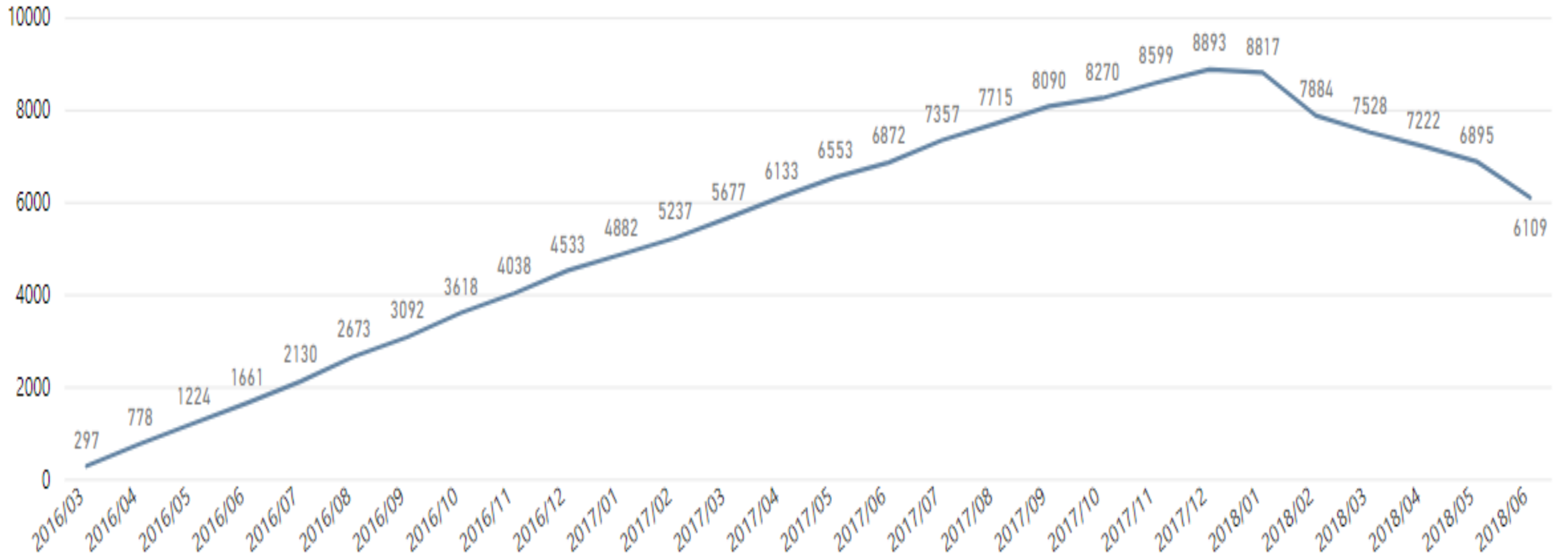


Overdue Investigations By Month





Cumulative Backlog



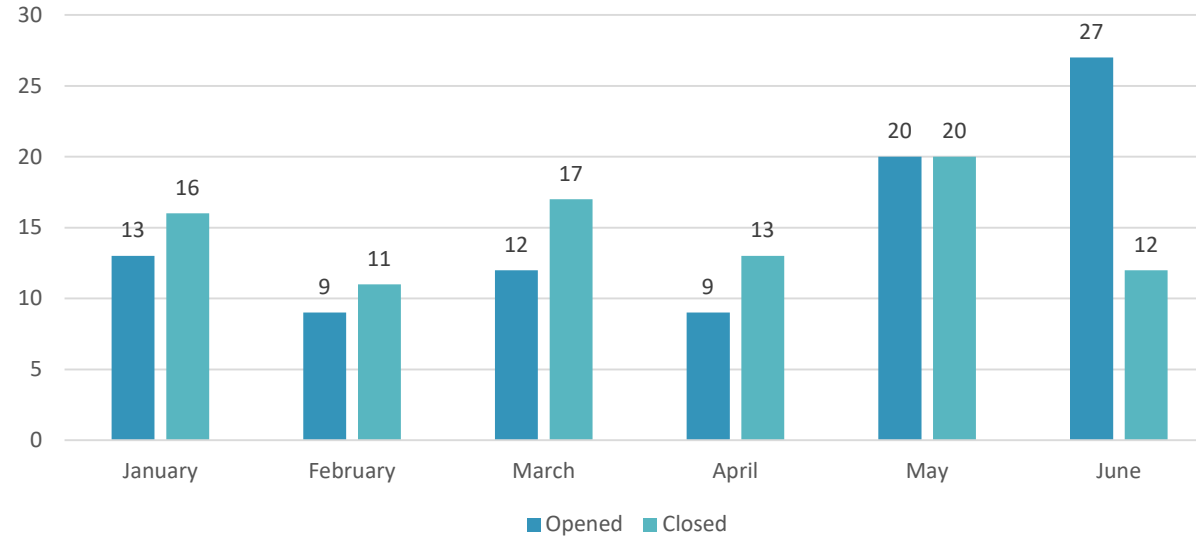


Quick Facts

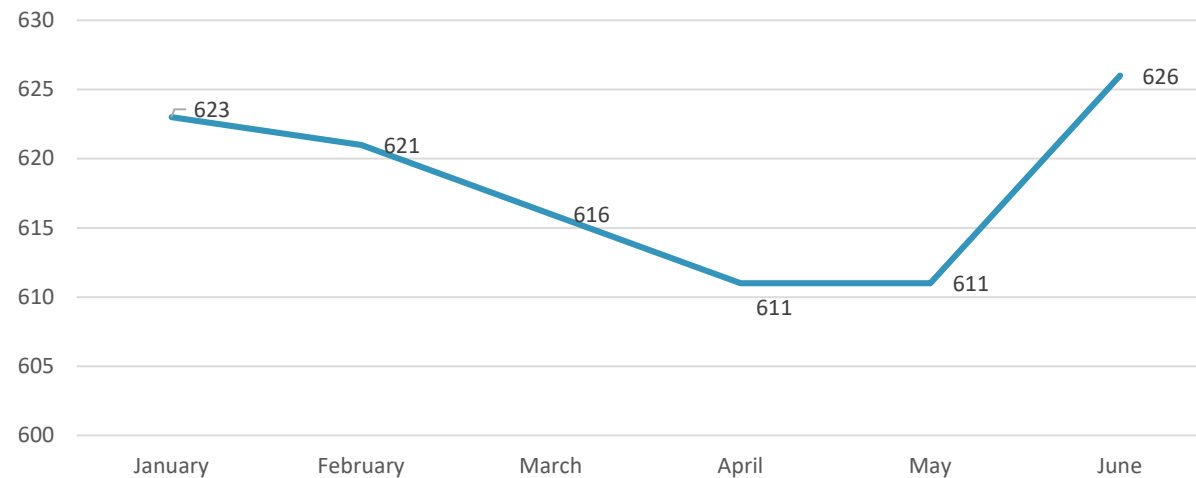
APS will acquire services, including custody, for the shortest duration and to the minimum extent necessary to remedy or prevent maltreatment. For example, APS will attempt to acquire services that keep clients in their homes, if it is safe to do so. Placement in an assisted living or other long-term care facility would only be considered if the client's needs were too great to remain safely in his/her home.



Number of Custody Cases Opened and Closed by Month

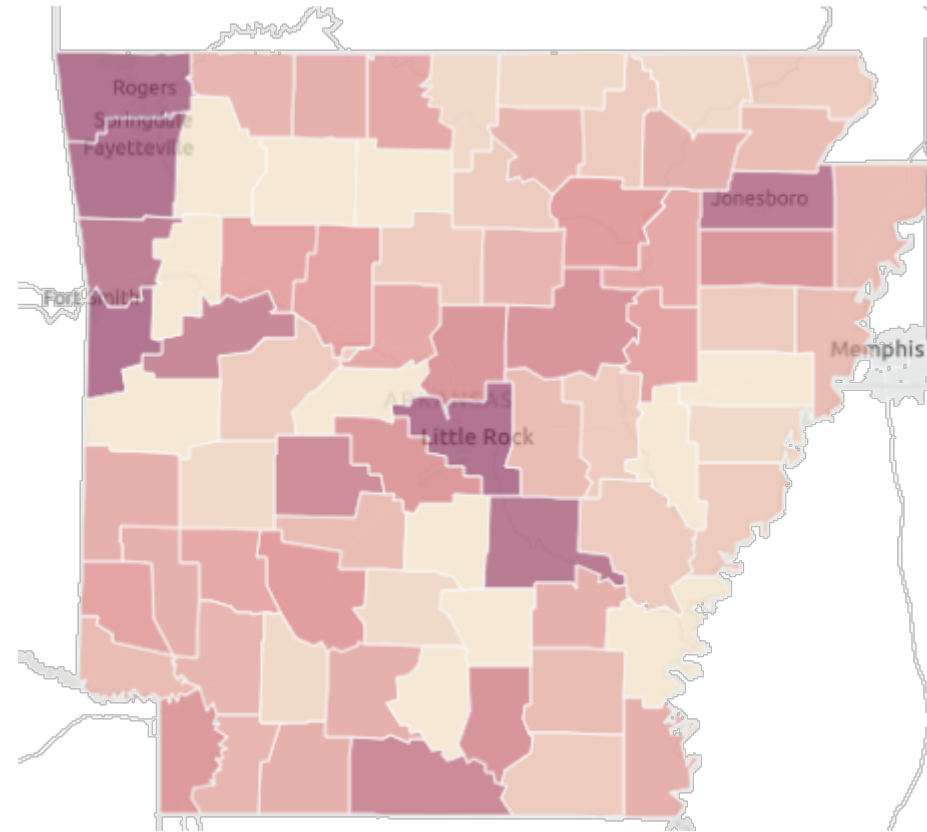
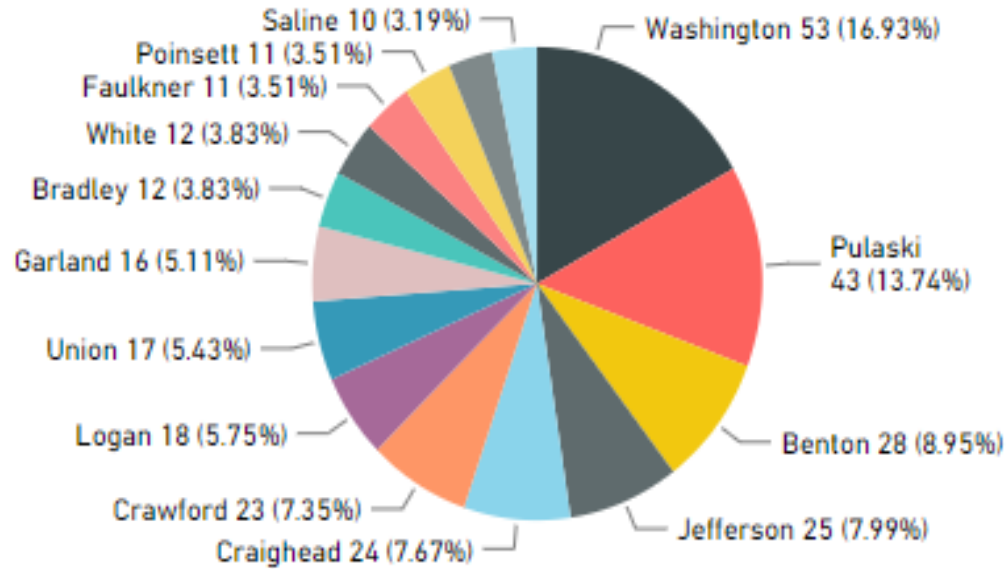


Number of Custody Clients at Month-End



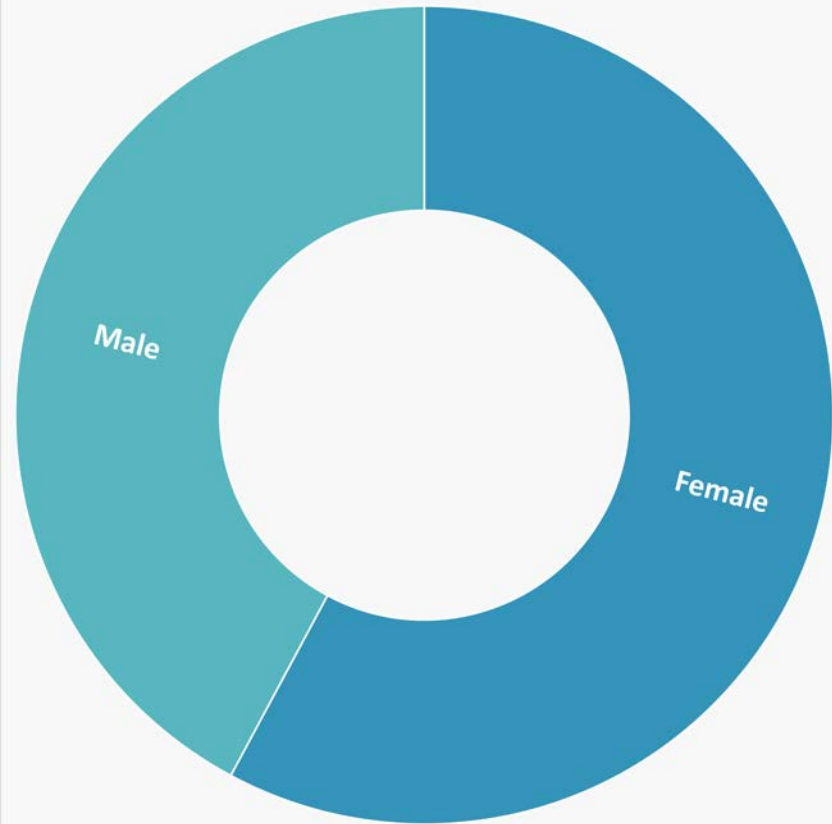
Location Distribution of Custody Clients

Top 15 Custody Cases by County

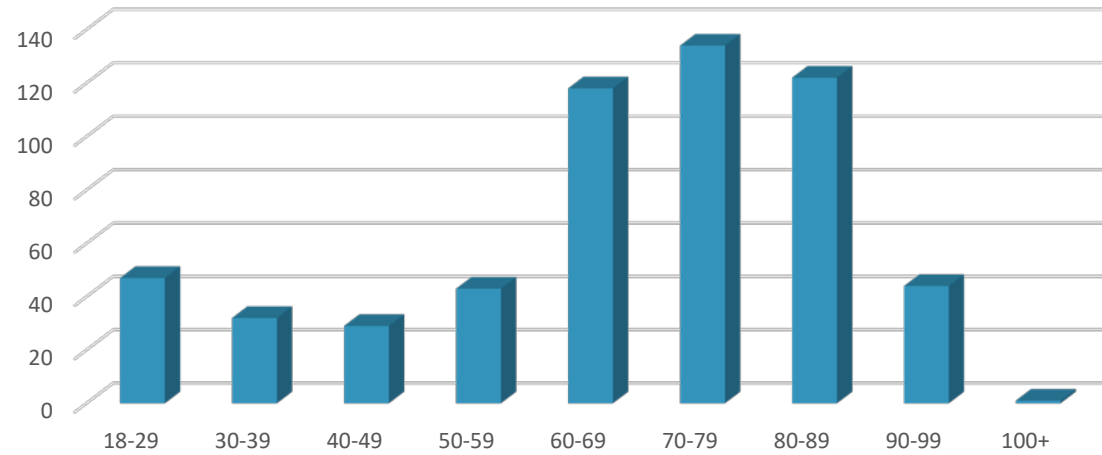


AS OF JUNE 30, 2018

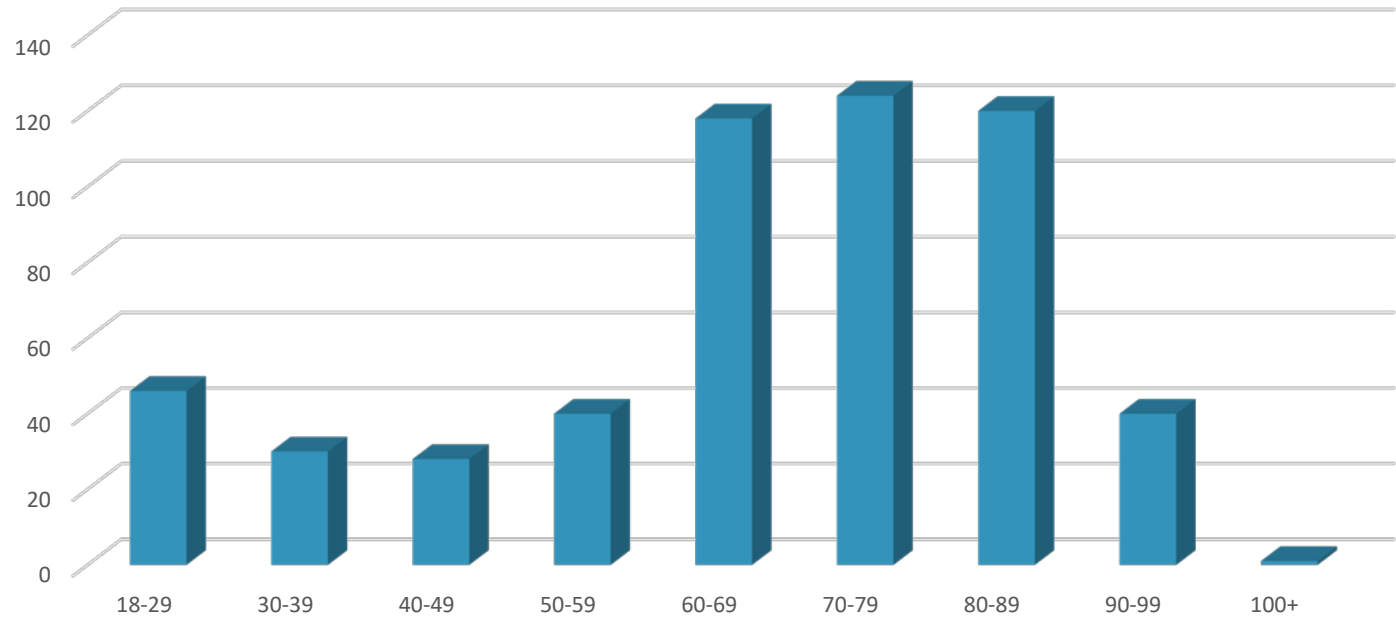
Gender Distribution of Custody Clients in Q4



Age Group Distribution of Custody Clients in Q3



Age Group Distribution of Custody Clients in Q4





References

Gunther, J. (2011). The Utah cost of financial exploitation. Utah Division of Aging and Adult Services.

Gunther, J. (2012). The 2011 Utah economic cost of elder financial exploitation. Utah Division of Aging and Adult Services.

Laumann, E., Leitsch, S., & Waite, L. (2008). Elder mistreatment in the United States: prevalence estimates from a nationally representative study. *The Journals of Gerontology Series B, Psychological Sciences and Social Sciences*, 63(4), S248–S254.

Thomas, D.E. (2014). The Wyoming cost of financial exploitation 2011, 2012, and 2013. Utah Adult Protection Services.

National Adult Protective Services Resource Center & National Association of States United for Aging and Disabilities (2012). *Adult protective services in 2012: Increasingly vulnerable.*

