

SFY 2011

# Annual Report Card



Produced for:  
*Arkansas Department of Human Services  
Division of Children and Family Services*

Produced by:  
*Hornby Zeller Associates, Inc.*

**TABLE OF CONTENTS**

**Executive Summary** ..... i

**Part I: Performance Indicators** ..... 1

    Percentage of Children with True Allegations of Child Maltreatment  
    Three Months, Six Months and One Year after a Previous  
    True Report..... 2

    Percentage of Foster Families with True Reports  
    of Maltreatment ..... 3

    Percentage of Children Receiving Supportive Services and Protective  
    Services who were Abused or Neglected within One Year of the  
    Initiation of Services ..... 4

    Percentage of Children Receiving Supportive Services and Protective  
    Services who Entered Care within One Year of Initiation of Services .. 5

    Percentage of Children Entering Foster Care who Returned Home within  
    Eighteen Months ..... 6

    Percentage of Children in Foster Care who have Experienced Two or Fewer  
    Placements ..... 7

    Percentage of Siblings in Foster Care who are Placed Together ..... 8

    Percentage of Children Who Were Adopted Within One Year of Having Their  
    Goal Changed to Adoption ..... 9

    Children Placed in Pre-adoptive Homes whose Adoptions were Finalized  
    within Twelve Months of Entering Placement..... 10

**Part II: Compliance Index**..... 11

    Timely Initiation of Child Maltreatment Assessments..... 12

    Timely Completion of Child Maltreatment Assessments..... 13

    24- and 72-Hour Initial Health Screenings ..... 14

    Comprehensive Health Assessments ..... 15

    Foster Home Recruitment..... 16

    Foster Home Re-evaluations ..... 16

    Required Visits Made by Worker ..... 17

**Part III: Description of Population and Services**..... 18

**Section I: True Child Maltreatment Reports** ..... 19

        Child Maltreatment Assessments ..... 19

        Characteristics of Children in True Maltreatment Reports ..... 20

        Children Involved in Allegations of True Maltreatment Reports ..... 22

**Section II: Foster Care**..... 23

        Characteristics of Children in Foster Care ..... 23

        Entries into Foster Care..... 27

        Exits from Foster Care..... 30

        Permanency Goals of Children in Foster Care ..... 33

        Length of Stay of Children in Foster Care..... 34

        Number of Placements of Children in Foster Care ..... 35

Characteristics of Children who Experienced Three or More Placements ...	36
Current Placement of Children in Foster Care.....	38
Characteristics of Children on Runaway Status at the End of the Year .....	39
Characteristics of Children in Relative Care .....	41
<b>Section III: Adoption</b> .....	<b>43</b>
Characteristics of Children with the Permanency Goal of Adoption at the End of the Year .....	43
Characteristics of Children whose Parents have had Parental Rights Terminated During the Year .....	45
Characteristics of Children Available for Adoption at the End of the Year.....	47
Current Placement of Children Available for Adoption.....	49
Characteristics of Children Placed in Pre-adoptive Homes .....	50
Children not Placed in Pre-adoptive Homes who are Available for Adoption .....	52
Special Needs .....	52
Characteristics of Children with Finalized Adoptions .....	53
Subsidized Adoptions .....	55
Characteristics of Children who Receive Adoption Subsidies.....	55
<b>APPENDICES</b> .....	<b>57</b>

## EXECUTIVE SUMMARY

The Annual Report Card (ARC) is distributed to agency managers and to the legislative committees dealing with children and youth. The ARC for State Fiscal Year (SFY) 2011 consists of three parts:

1. **Performance Indicators**, which provide information on service outcomes, such as:
  - a. *Percentage of Children with True Allegations of Child Maltreatment Three Months, Six Months and One Year After a Previous True Report*
  - b. *Percentage of Siblings in Placement who are Placed Together*
  - c. *Percentage of Children Adopted within 12 Months of Having Their Goal Changed to Adoption*
  
2. **Compliance Index**, which reports on the Division's compliance with requirements set by DCFS with guidance from the Arkansas legislative children and youth committees, such as:
  - a. *Timely Completion of Child Maltreatment Assessments*
  - b. *24- and 72-Hour Initial Health Screenings for Children Entering Foster Care*
  - c. *Foster Home Recruitment*
  
3. **Description of Population and Services**, which describes the children who were the subjects of maltreatment reports, served in foster care and/or provided adoption services, such as:
  - a. *Types of Allegations in Child Maltreatment Reports*
  - b. *Permanency Goals of Children in Foster Care*
  - c. *Characteristics of Children Placed in Adoptive Homes*

The ARC provides this information on a yearly basis, showing trends over time. Descriptions of the client population at the various service stages are provided as well, so that the agency has information on populations and issues to target to improve performance.

### Part I: Performance Indicators

The Division of Children and Family Services (DCFS) has established nine performance indicators to measure progress with regard to its major goals of child safety, permanency and well-being.

There were no noteworthy areas in this section during the fiscal year.

## Part II: Compliance Index

DCFS has set compliance measures with guidance from the House Committee on Aging, Children and Youth, Legislative and Military Affairs and the Senate Interim Committee on Children and Youth. An index is compiled by reporting the level of compliance with these measures.

The Division improved in two areas regarding compliance requirements this fiscal year.

- Timely Completion of Child Maltreatment Assessments

Of the investigations assigned to DCFS during SFY 2011, **59 percent** were completed within the required 30-day period, an increase of three percentage points from SFY 2010 (56%), though still well below the goal of 90 percent.

- Foster Home Recruitment

The percentage of foster homes recruited during SFY 2011 increased to **166 percent** of the compliance goal (320 homes), 23 percentage points higher than SFY 2010 (143%).

While the Division improved in two areas, there were three areas which resulted in a decline in compliance during SFY 2011.

- 24-Hour and 72-Hour Initial Health Screenings

Of the children who required an initial health screening within 24 hours of entering foster care, **54 percent** received their screenings in a timely manner during SFY 2011. The compliance rate is a 21 percentage point decrease from SFY 2010 (75%) and below the Division's goal of 95 percent compliance.

Of the children who required an initial health screening within 72 hours of entering foster care, **68 percent** received their screenings in a timely manner during SFY 2011. The compliance rate is a decrease of 18 percentage points from SFY 2010 (86%) and below the Division's goal of 95 percent compliance.

- Timely Initiation of Investigations

Of the child maltreatment assessments assigned to DCFS for investigation during SFY 2011, agency staff initiated **84 percent** on time, a decrease of four percentage point from SFY 2010 (88%) and still below the compliance goal of 95 percent.

- Required Visits Made by Worker

Caseworkers statewide made **59 percent** of their required monthly visits to see children in foster care during SFY 2011, which was two percentage points less than the rate reported for SFY 2010 (61%) and below the goal of 85 percent.

### **Part III: Description of Population and Services**

This section describes the number and status of maltreatment assessments, services provided, children who were subjects of maltreatment reports, children who were served in foster care and children who received adoption services.

- Supportive Services, Protective Services and Foster Care

The combined number of supportive services, protective services and foster care cases increased by almost **35 percent** over the last ten years (15,944 – SFY 2001, 21,461 - SFY 2011).

- Children in Foster Care

The total number of children in foster care between the ages of zero and five increased by **96 percent** from SFY 2001 (1,748 children) to SFY 2011 (3,422 children).

The total number of children in foster care increased between SFY 2010 and SFY 2011. Specifically, the number of children in care served by DCFS during the year increased by **six percent** from SFY 2010 (7,491) to SFY 2011 (7,959).

## **PART I: PERFORMANCE INDICATORS**

The Division has established nine performance measures to indicate levels of achievement of its major goals of child safety, family preservation and permanency:

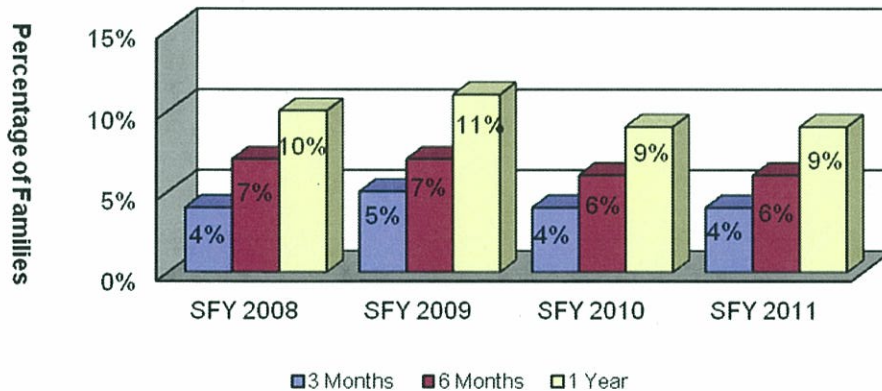
- Percentage of children with true allegations of child maltreatment three months, six months and one year after a previous true report;
- Percentage of foster families with true reports of maltreatment;
- Percentage of children receiving Supportive Services or Protective Services who were abused or neglected within one year of the initiation of services;
- Percentage of children receiving Supportive Services or Protective Services who entered foster care within one year of the initiation of services;
- Percentage of children in foster care who returned home within 18 months;
- Percentage of children in foster care who have experienced two or fewer placements;
- Percentage of siblings in foster care who are placed together;
- Percentage of children who were adopted within one year of having their goal changed to adoption; and
- Number of children placed in pre-adoptive homes whose adoption were finalized within 12 months of entering a pre-adoptive placement.



**Percentage of Children with True Allegations of Child Maltreatment Three Months, Six Months and One Year after a Previous True Report**

Of the 8,597 children who were involved in a true report of maltreatment between July 2009 and June 2010, 326 (4%) experienced a repeat true report of maltreatment within three months of the initial report. Of those same 8,597 children, 503 (6%) were involved in a repeat true report within six months of the original report, and 794 (9%) were involved in a repeat true report within 12 months of the first report. The number of children who experienced a recurrence of maltreatment has remained fairly consistent over the last four fiscal years, varying only by one to two percentage points.

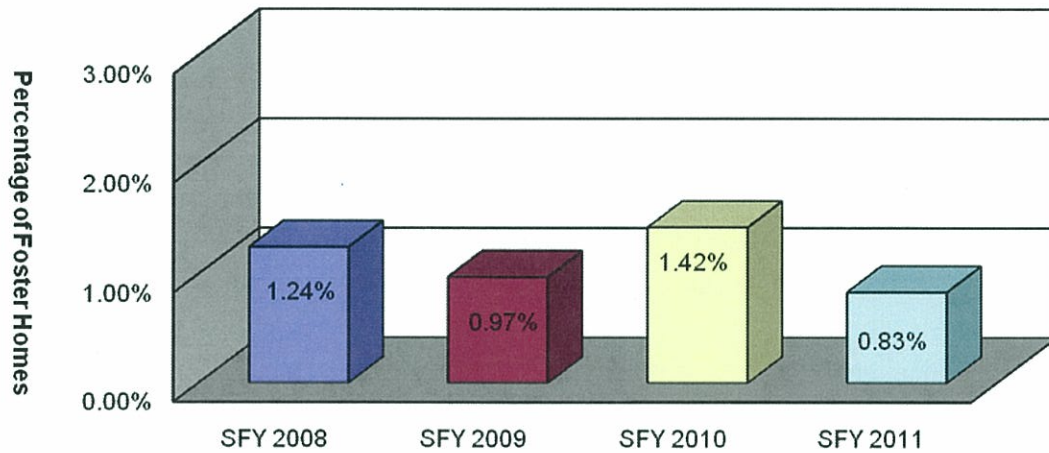
**Chart 1: Percentage of Children with True Allegations of Child Maltreatment within 3 Months, 6 Months and One Year after a Previous True Report**



**Percentage of Foster Families with True Reports of Maltreatment**

There were 159 foster home maltreatment reports received during SFY 2011. Of those, 18 were found to be true. Based on the 2,166 DCFS foster homes<sup>1</sup> open during the year, the percentage of foster families with a true report of maltreatment was 0.83 percent. This is down 0.59 percentage points from SFY 2010 (1.42%).

Chart 2: Percentage of Foster Families with True Reports of Maltreatment

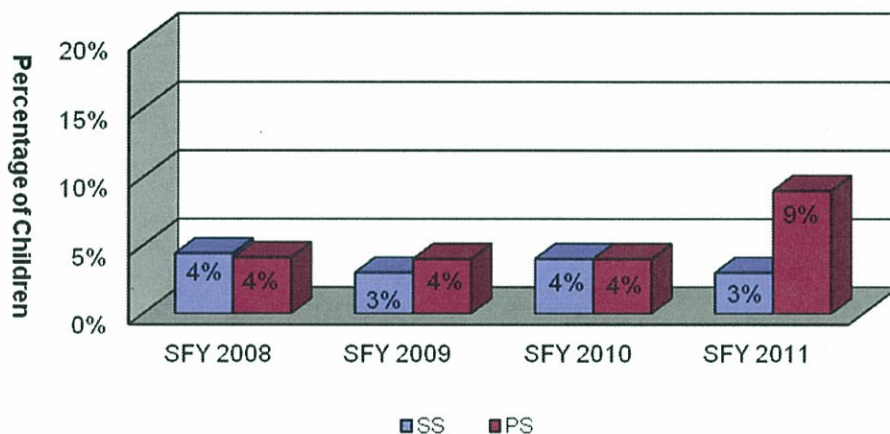


<sup>1</sup> This includes family and therapeutic foster homes.

**Percentage of Children Receiving Supportive Services and Protective Services who were Abused or Neglected within One Year of the Initiation of Services**

There were 1,851 children who began receiving supportive services (SS) between July 2009 and June 2010. Of those children, 51 (3%) were involved in a true maltreatment report within one year of the initiation of services. There were 11,926 children who began receiving protective services (PS) during that same time period; of those children, 1,025 (9%)<sup>2</sup> experienced a true report of maltreatment within one year.

**Chart 3: Percentage of Children Receiving PS and SS Services who were Abused or Neglected within One Year of Initiation of Services**

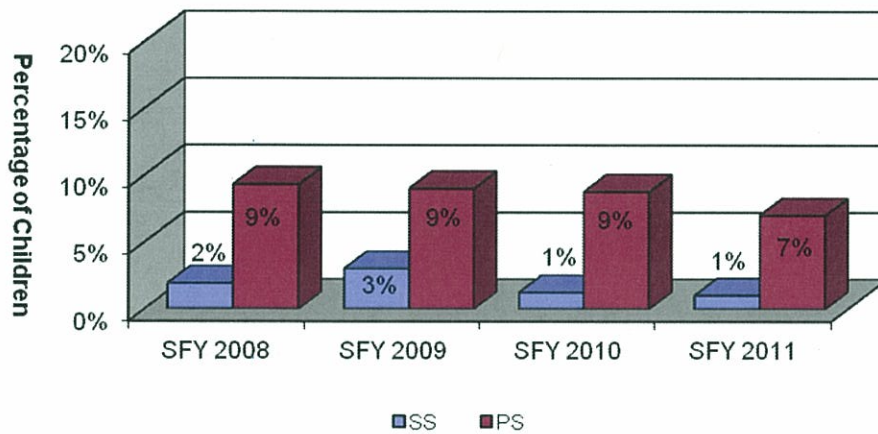


<sup>2</sup> Beginning with the first quarter of SFY 2011, a new methodology was utilized to measure this percentage. The population is now limited to in-home cases only.

**Percentage of Children Receiving Supportive Services and Protective Services who Entered Care within One Year of Initiation of Services**

Of the 1,851 children who began receiving supportive services between July 2009 and June 2010, only 19 (1%) entered foster care within one year of the initiation of those services. Of the 11,926 children who began receiving protective services during that same time period, 859 (7%) entered foster care within one year of the initiation of services.

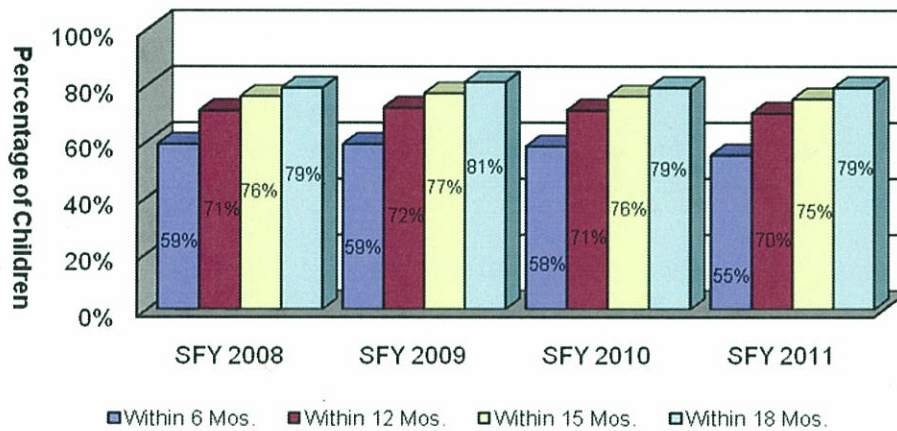
**Chart 4: Percentage of Children Receiving SS and PS Services who Entered Foster Care within One Year of Initiation of Services**



**Percentage of Children Entering Foster Care who Returned Home within Eighteen Months**

There were 4,022 children who entered foster care between January 2009 and December 2009.<sup>3</sup> Of those, 2,211 children (55%) returned home within six months, 2,807 children (70%) returned home within 12 months, 3,015 children (75%) returned home within 15 months, and 3,176 children (79%) returned home within 18 months of entering foster care.

**Chart 5: Percentage of Children Entering Foster Care who were Returned Home within Eighteen Months**

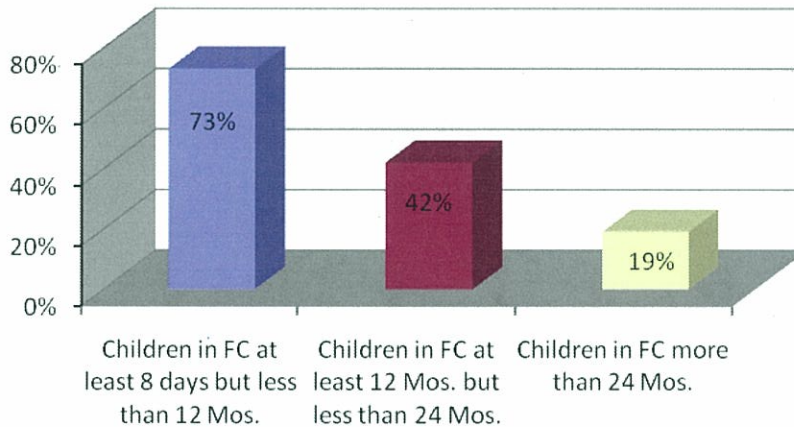


<sup>3</sup> The 2009 calendar year was used for this analysis to provide up to 18 months to measure time to reunification.

**Percentage of Children in Foster Care who have Experienced Two or Fewer Placements**

Placement stability of children in foster care is measured by the percentage of children with two or fewer placements who are in care for varying lengths of time. Of the children in foster care at the end of SFY 2011 who were in care for less than 12 months, 73 percent experienced two or fewer placements; the national standard is 86 percent. Of the children in foster care between 12 and 24 months, 42 percent had two or fewer placements; the national standard for this population is 65.4 percent. Finally, of the children who were in foster care for over two years, only 19 percent experienced two or fewer placements during their stay in foster care, with the national standard for this population being 41.8 percent.

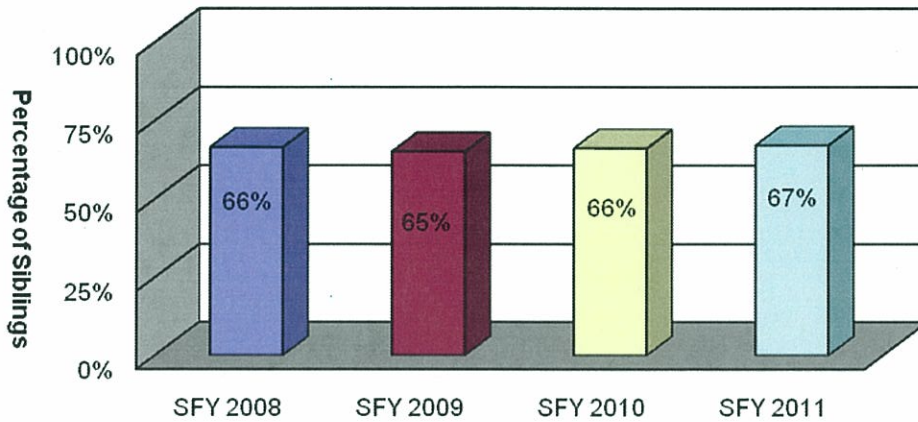
**Chart 6: Children in Foster Care who have Experienced Two or Fewer Placements**



***Percentage of Siblings in Foster Care who are Placed Together***

At the end of SFY 2011, 2,006 children were in foster care who had siblings who were also in care. Of those children, 1,345 (67%) were placed with at least one of their siblings, while 966 (48%) were placed with all of their siblings. These figures do not exclude children who have been placed separately for valid reasons such as safety issues or court orders.

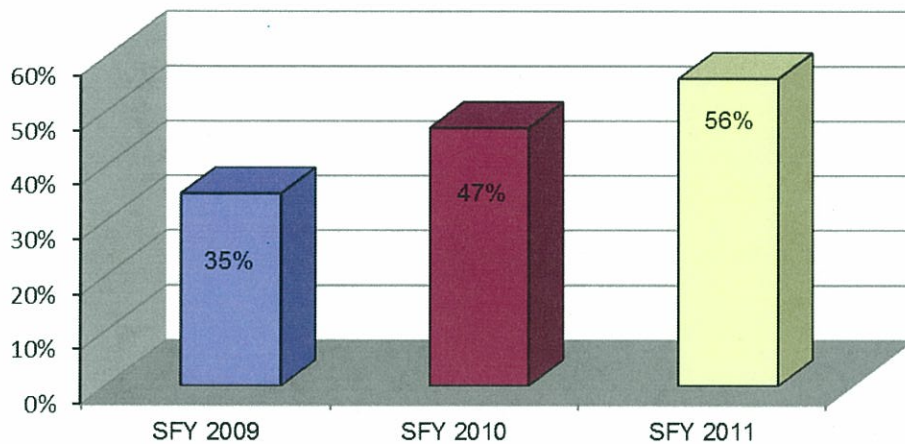
**Chart 7: Percentage of Siblings in Foster Care who are Placed Together**



***Percentage of Children Who Were Adopted Within One Year of Having Their Goal Changed to Adoption***

Of the 517 children whose goals were changed to adoption during the fiscal year one year ago, 288 children (56 percent) were adopted within one year of the goal change.

**Chart 8: Percentage of Children Who Were Adopted Within One Year of Having Their Goal changed to Adoption**





***Children Placed in Pre-adoptive Homes whose Adoptions were Finalized within Twelve Months of Entering Placement***

There were 386 children who were placed in pre-adoptive homes between July 2009 and June 2010, a count which was similar to the number of children placed in such homes during the previous year. Of those 386 children, 344 (89%) had their adoptions finalized within 12 months of being placed in their pre-adoptive homes.

Twenty-eight (7%) of the children who were placed in pre-adoptive homes during SFY 2011 experienced a disruption. The percentage of children who experienced a disruption decreased by six percentage points between SFY 2010 and SFY 2011. A disruption occurs when a child has been placed in a pre-adoptive home and the family or the child decides not to proceed with the adoption and the child leaves the pre-adoptive home.

Of the 386 children placed in pre-adoptive homes, the adoption was still pending finalization 12 months after the placement for 22 children (6%).

**Table 1: Children Placed in Pre-adoptive Homes during SFY 2011 whose Adoptions were Finalized within 12 Months of Entering Placement**

Status	SFY 2010		SFY 2011	
	Number	Percentage	Number	Percentage
Finalized Adoption within 12 Months	303	79%	344	89%
Disrupted Adoptive Placements	50	13%	28	7%
Children with a Disruption who were Re-placed in a Pre-adoptive Home	35	9%	14	4%
Still Pending at the End of the Year	64	17%	22	6%

## PART II: COMPLIANCE INDEX

The Division has set compliance measures with guidance from the Joint Interim Committee on Children and Youth. An index is compiled by reporting the level of compliance with these measures.

### Goal   Compliance Measure

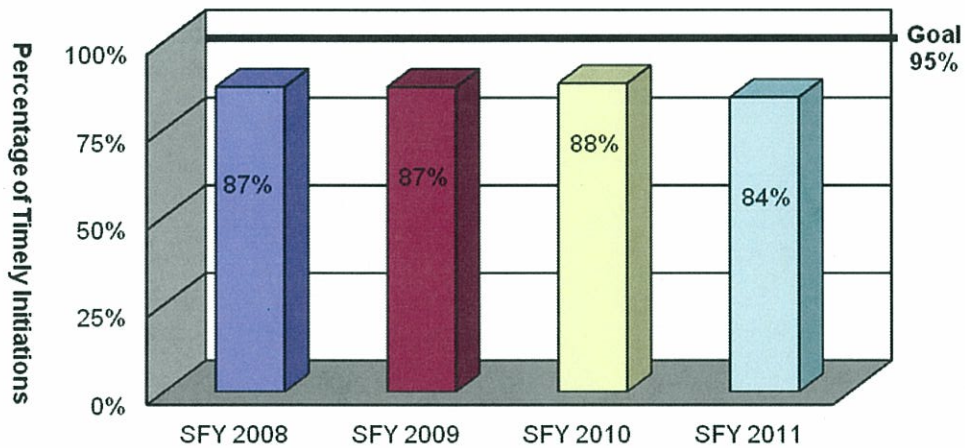
- 95%**   ***Timely Initiation of Child Maltreatment Assessments.*** The investigator interviews or observes the victim child outside the presence of the alleged offender within 24 hours of any alleged severe maltreatment or within 72 hours otherwise.
- 90%**   ***Timely Completion of Child Maltreatment Assessments.*** A determination must be made regarding an allegation of child maltreatment within 30 days of receipt of the allegation.
- 95%**   ***24-Hour Initial Health Screenings.*** The screening is conducted within 24 hours after removal from the home on children who enter foster care due to an allegation of severe maltreatment, or if there is evidence of acute illness or injury.
- 95%**   ***72-Hour Initial Health Screenings.*** This screening is conducted within 72 hours after removal from the home on all children who enter foster care who are not subject to the 24 hour screening.
- 95%**   ***Comprehensive Health Assessments.*** Within 60 days of a child's entering foster care, an evaluation of their physical and mental health status must be completed.
- 320 Homes**   ***Foster Home Recruitment.*** DCFS must ensure a sufficient number and variety of foster homes are available which meet minimal standards and match the needs and characteristics of foster children.
- 95%**   ***Foster Home Re-evaluations.*** DCFS must re-evaluate, at least annually, each foster home's ability to care for children.
- 85%**   ***Required Visits Made by Worker.*** DCFS must provide data on the percentages of required weekly visits made by DCFS workers to children in foster care.

***Timely Initiation of Child Maltreatment Assessments***

There were 33,849 referrals for child maltreatment assessments during SFY 2011. Of that number, 27,471 (81%) referrals were assigned to DCFS for investigation of which 22,947 assessments were initiated within the required period. This resulted in a compliance rate of 84 percent, which was a decrease from SFY 2010 (88%).

The Crimes Against Children Division (CACD) of the Arkansas State Police was responsible for handling the remaining child abuse referrals. CACD was responsible for 5,794 Priority I referrals and 584 Priority II referrals during SFY 2011. Of the Priority I referrals, 5,492 (95%) were initiated in a timely manner while 553 (95%) of the Priority II referrals were initiated in a timely manner.

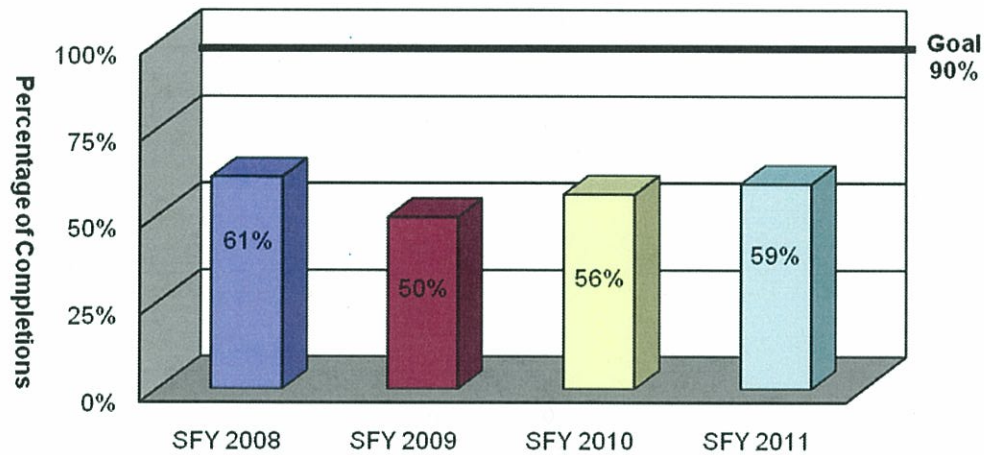
**Chart 9: Timely Initiation of Child Maltreatment Assessments (DCFS Only)**



### ***Timely Completion of Child Maltreatment Assessments***

Of the 27,471 assessments initiated by DCFS during SFY 2011, 16,071 were completed within the required 30-day period. This resulted in a compliance rate of 59 percent, an increase of three percentage points from SFY 2010 (56%) but still well below the goal of 90 percent.

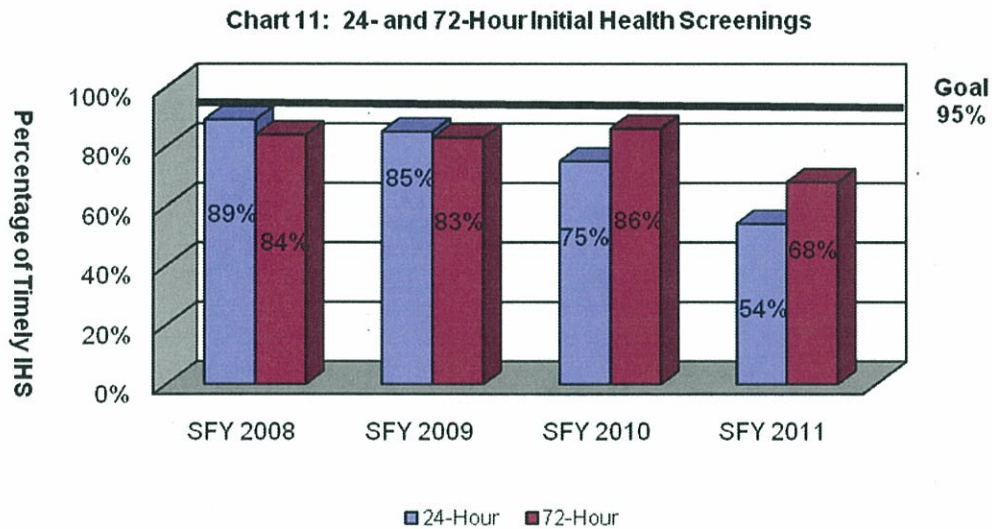
**Chart 10: Timely Completion of Child Maltreatment Assessments**



**24- and 72-Hour Initial Health Screenings**

If a child enters foster care due to an allegation of severe maltreatment or if there is evidence of acute illness or injury, an initial health screening must be conducted within 24 hours of the child’s removal from the home. Of the 1,422 children who required the 24-hour health screening during SFY 2011, 770 (54%) received the screening in a timely manner. The compliance rate was 21 percentage points lower than the rate reported for SFY 2010 and below the goal of 95 percent.

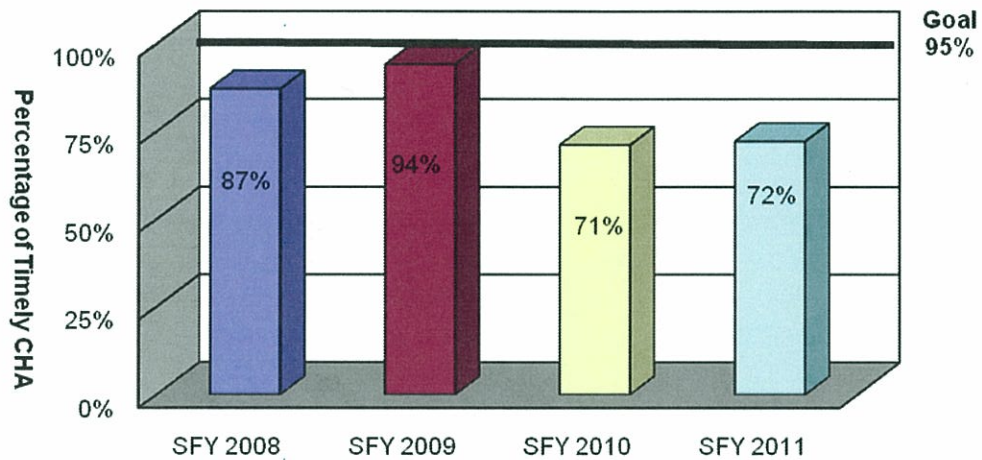
All children entering foster care who do not require the initial 24-hour health screening must undergo an initial health screening within 72 hours of their removal. Of the 2,617 children who required their health screening be completed within 72 hours, 1,784 (68%) received their screenings in a timely manner, a result which was also represents a decline in compliance.



**Comprehensive Health Assessments**

All children who enter foster care must receive a comprehensive health assessment to evaluate their physical and mental health status within 60 days of entering foster care. There were 2,285 children who entered foster care between May 2010 and May 2011 who remained in care for at least 60 days. Of those children, 1,634 received their comprehensive health assessment within 60 days of entering care. The resulting compliance rate of 72 percent represents a slight increase from SFY 2010 but remains below the goal of 95 percent.

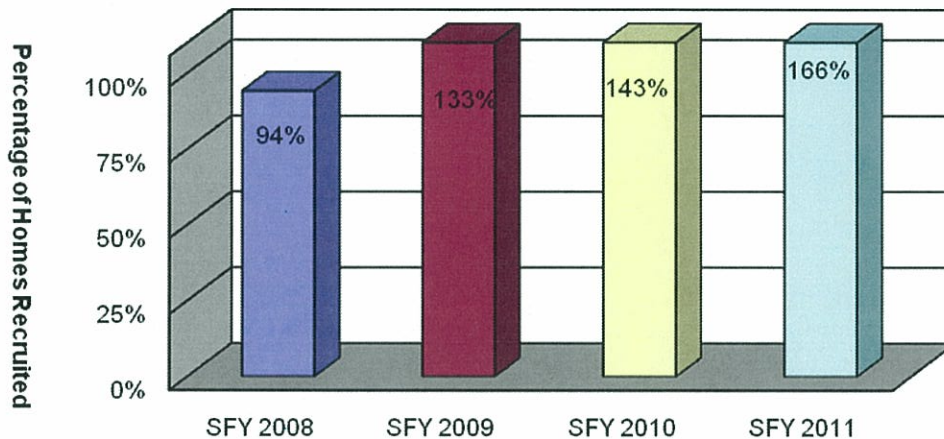
**Chart 12: Comprehensive Health Assessments**



***Foster Home Recruitment***

There were 531 new foster homes recruited during SFY 2011. This was 211 foster homes more than the goal of 320 new homes for the year. This number resulted in a compliance rate of 166 percent, which continues an upward trend in the agency’s ability to recruit new foster homes in recent years. During the same timeframe, however, 528 foster family homes were closed.

**Chart 13: Foster Home Recruitment**

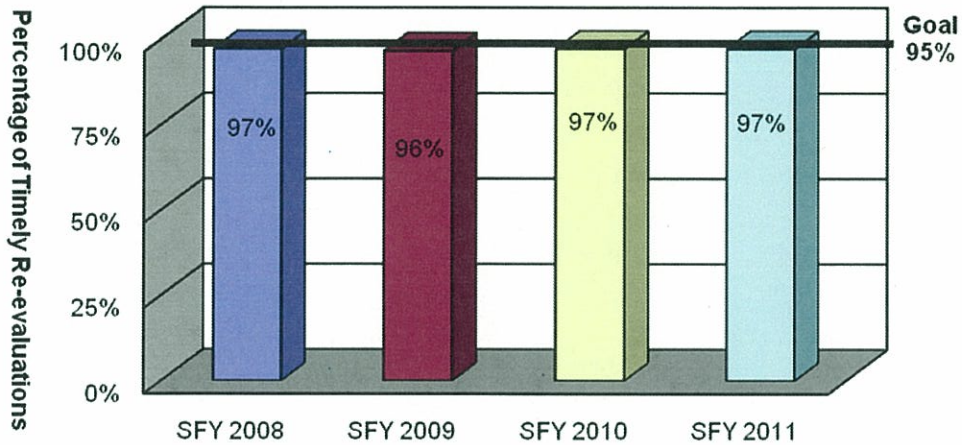


***Foster Home Re-evaluations***

On an annual basis, at a minimum, DCFS is required to re-evaluate each foster home’s ability to care for its children. Of the 1,152 DCFS foster homes that were active at the end of the year, 1,116 had a recently completed re-evaluation. The resulting compliance rate was 97 percent, which was the same as SFY 2010 and

above the goal of 95 percent compliance.

**Chart 14: Foster Home Re-evaluations**

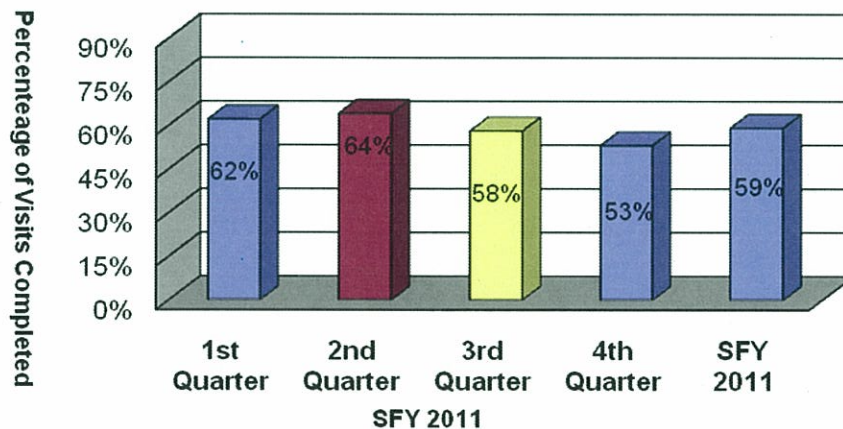


***Required Visits Made by Worker***

DCFS acknowledges the importance of worker contact with children in foster care and believes that these visits should be conducted face-to-face in the children’s placement setting, at least once per month.

During SFY 2011, the percentage of children who received monthly visits during the year averaged 59 percent. This signified a two percentage point decrease in the percent of monthly visits completed during SFY 2010 (61%).

**Chart 15: Required Foster Care Monthly Visits Made by Worker**





### **PART III: DESCRIPTION OF POPULATION AND SERVICES**

This section describes the number and status of maltreatment assessments, children who were served in foster care and children who were provided adoption services.

Section I outlines the characteristics of children, such as age, gender and ethnicity, in true maltreatment reports. Additionally, this section describes the types of allegations in maltreatment reports.

Section II describes the foster care population, specifically the characteristics of children in foster care, entries and exits of children in foster care, reasons children came into care, lengths of stay for children in foster care and in relative care, placements of children in foster care and the number of placements children experience while in care.

Section III focuses on adoption data such as the characteristics of children available for adoption, current placement of those children, characteristics of children placed in adoptive homes, children whose parents have had their parental rights terminated but have not been placed in an adoptive home, finalized adoptions and adoption subsidies.

Appendix F provides an area and county breakdown for Foster Care, Protective Service and Supportive Service cases.

**Part III: Description of Population and Services**  
**Section I: True Child Maltreatment Reports**

***Child Maltreatment Assessments***

There were 33,849 maltreatment assessments received during SFY 2011, a three percent increase from SFY 2010 (32,915). Of those, 8,573 reports (25%) were found to be true, a rate which is just above the national percentage (23.7%).<sup>4</sup> There were 11,746 victim children involved in the reports determined to be true during the year. (See Appendix A for an area and county breakdown).

**Table 2: Child Maltreatment Assessments**

	Total Assessments	True Assessments	Percent True
SFY 2011	33,849	8,573	25%
SFY 2010	32,915	7,831	24%
SFY 2009	30,191	6,701	22%
SFY 2008	27,672	6,288	23%

	DCFS			CACD		
	Total Assessments	True Assessments	Percent True	Total Assessments	True Assessments	Percent True
SFY 2011	27,471	5,984	22%	6,378	2,589	41%
SFY 2010	26,215	5,164	20%	6,700	2,667	40%
SFY 2009	23,801	4,138	17%	6,390	2,563	40%
SFY 2008	21,319	3,897	18%	6,353	2,391	38%

<sup>4</sup> Source: Child Maltreatment 2008, Reports from the States to the National Child Abuse and Neglect Data System, U.S. Department of Health and Human Services, Administration for Children and Families, Administration on Children, Youth and Families, Children's Bureau.

**Characteristics of Children in True Maltreatment Reports**

As indicated above, 11,746 victim children were involved in true reports of maltreatment during SFY 2011. This number represents nearly a two percent increase of children involved in a true report from SFY 2010 (11,532 children).<sup>5</sup>

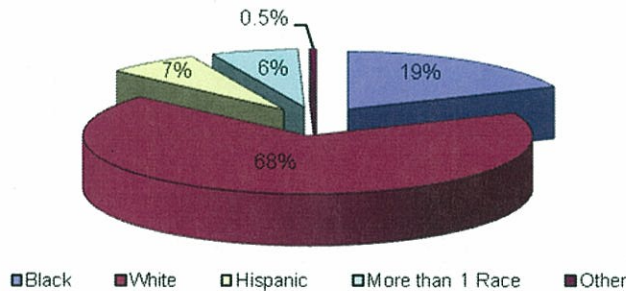
**Table 3: Characteristics of Children in True Maltreatment Reports SFY 2011**

Age	Gender	White	Black	Asian	AIAN	NAPI	Hispanic	More Than 1 Race	Total
0 to 1	Female	400	124	0	2	3	39	37	605
	Male	335	108	0	1	1	29	52	526
2 to 5	Female	1,033	295	2	4	6	121	128	1,589
	Male	1,011	223	2	1	0	87	107	1,431
6 to 11	Female	1,275	371	3	2	5	130	107	1,893
	Male	1,371	357	1	1	3	137	116	1,986
12 to 15	Female	596	159	1	1	1	41	48	847
	Male	967	274	5	1	1	111	66	1,425
16 to 18	Female	327	78	0	2	0	24	26	457
	Male	595	169	3	1	2	55	35	860
18+	Female	5	0	0	0	0	0	0	5
	Male	2	0	0	0	0	0	0	2
<b>Total*</b>		<b>7,917</b>	<b>2,158</b>	<b>17</b>	<b>16</b>	<b>22</b>	<b>774</b>	<b>722</b>	<b>11,626</b>

\*Demographic information was not entered into CHRIS for 120 children.

The chart below shows that 68 percent of the children involved in true maltreatment reports were white, while 19 percent were black and seven percent were Hispanic. These are similar to the percentages from SFY 2010.

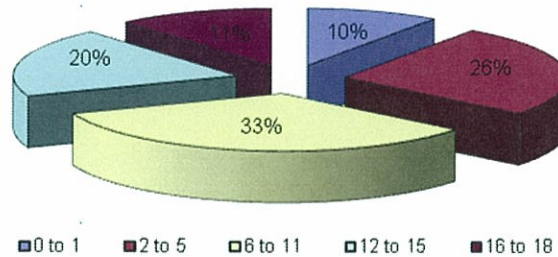
Chart 16a: Race/Ethnicity of Children in True Maltreatment Reports



<sup>5</sup> The table above, and each subsequent demographic table, divides counts of children by race and ethnicity, into the following categories: "Hispanic," "More than One Race," "Asian" (includes Indonesian, Cambodian, Hmong and Vietnamese), "AIAN" (includes Native American, Alaskan Native and American Indian) and "NAPI" (includes Native Hawaiian and other Pacific Islanders).

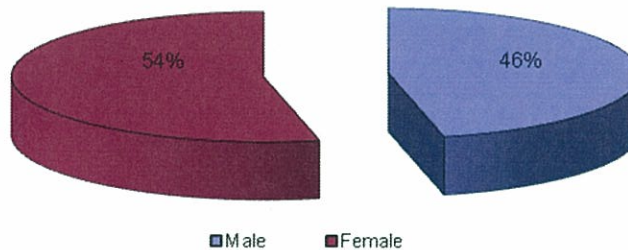
The following chart shows that children between the ages of six and 11 represented the highest percentage of children involved in true reports received during SFY 2011 (33%). These percentages are similar to those from SFY 2010.

Chart 16b: Ages of Children Involved in True Maltreatment Reports



Fifty-four percent of the children involved in true reports were male, while 46 percent were female.

Chart 16c: Gender of Children In True Maltreatment Reports



***Children Involved in Allegations of True Maltreatment Reports***

The majority of the 11,746 children cited in true maltreatment reports were involved in allegations of neglect (89%) during SFY 2011, followed by reports involving allegations of physical abuse (44%) and sexual abuse (29%).<sup>6</sup>

**Table 4: Percentage of Children Involved in True Allegations of Maltreatment  
SFY 2010 – SFY 2011**

	SFY 2010		SFY 2011	
<b>Neglect</b>	9,939	86%	10,439	89%
<b>Physical Abuse</b>	5,012	43%	5,124	44%
<b>Sexual Abuse</b>	3,558	31%	3,439	29%

---

<sup>6</sup> The total number represented will outnumber the total children involved in true maltreatment reports because children can be involved in more than one allegation.

**Part III: Description of Population and Services**  
**Section II: Foster Care**

***Characteristics of Children in Foster Care***

There were 7,959 children in foster care during SFY 2011, an increase from SFY 2010 (7,491 children). This count includes children who remained in care from the previous year as well as children who came into care during SFY 2011. (See Appendices B, C and D for an area and county breakdown of demographic information.) The table below describes the characteristics of the children in foster care during the most recent state fiscal year.

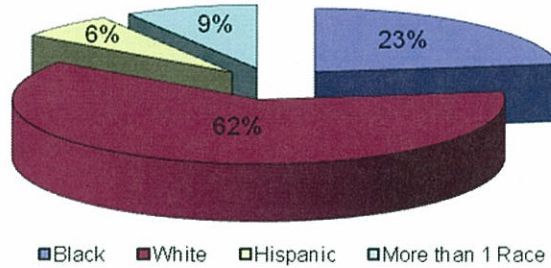
**Table 5: Characteristics of Children in Foster Care During the Year  
SFY 2011**

Age	Gender	White	Black	Asian	AIAN	NAPI	Hispanic	More Than 1 Race	Total
0 to 1	Female	357	140	0	0	1	34	48	580
	Male	430	165	0	0	0	31	48	674
2 to 5	Female	674	207	2	3	2	51	114	1,026
	Male	699	239	2	3	1	83	99	1,126
6 to 11	Female	666	223	2	0	0	79	70	1,040
	Male	639	225	2	0	0	67	107	1,040
12 to 15	Female	374	131	1	0	0	42	54	612
	Male	358	134	0	1	1	41	55	590
16 to 18	Female	244	103	1	0	0	29	38	415
	Male	211	99	1	1	0	23	25	360
18+	Female	131	80	0	0	0	12	17	240
	Male	136	68	0	0	1	10	15	230
<b>Total*</b>		<b>4,902</b>	<b>1,814</b>	<b>11</b>	<b>8</b>	<b>6</b>	<b>502</b>	<b>690</b>	<b>7,933</b>

\*Demographic information had not been entered into CHRIS for 26 children.

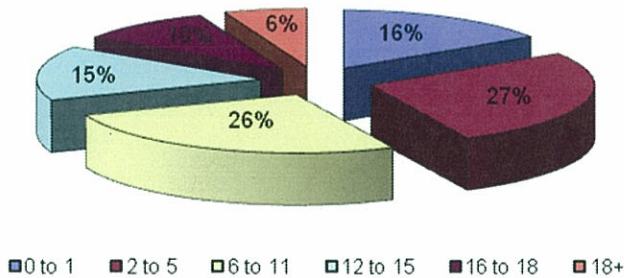
The chart below shows that 62 percent of the children in foster care during the year were white, while 23 percent of the children were black. National data reveal that only 41 percent of the children in the national foster care system were white, while 29 percent of the children were black.<sup>7</sup>

**17a: Race/Ethnicity of Children in Care During the Year**



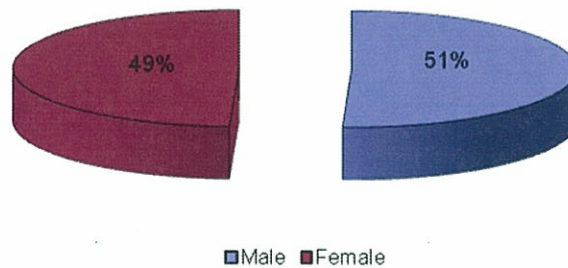
At least half of the children who were in care during the year were between the ages of two and 11 years old.

**17b: Ages of Children in Care During the Year**



The following chart shows the gender distribution of the children in foster care during the year. Forty-nine percent of the children were female and 51 percent were male.

**17c: Gender of Children in Care During the Year**



<sup>7</sup> Adoption and Foster Care Analysis and Reporting System (AFCARS) preliminary data submitted for children in foster care between 10/1/2009 and 9/30/2010 as of October 2010.

There were 4,105 children in foster care at the end of SFY 2011, a slight decrease from the 4,118 children in care at the end of SFY 2010. The following table outlines the characteristics of the children in foster care at the end of the latest state fiscal year.

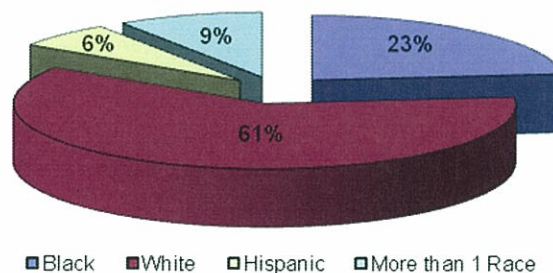
**Table 6: Characteristics of Children in Foster Care at the End of the Year SFY 2011**

Age	Gender	White	Black	Asian	AIAN	NAPI	Hispanic	More Than 1 Race	Total
0 to 1	Female	185	74	0	0	1	14	25	299
	Male	226	84	0	0	0	16	23	349
2 to 5	Female	339	94	1	0	1	19	46	500
	Male	326	125	0	1	1	40	48	541
6 to 11	Female	339	104	1	0	0	35	34	513
	Male	326	110	0	0	0	39	67	542
12 to 15	Female	201	74	0	0	0	20	25	320
	Male	187	73	0	1	1	18	35	315
16 to 18	Female	154	62	1	0	0	21	17	255
	Male	136	72	1	1	0	16	16	242
18+	Female	48	41	0	0	0	7	7	103
	Male	66	36	0	0	0	5	5	112
<b>Total*</b>		<b>2,533</b>	<b>949</b>	<b>4</b>	<b>3</b>	<b>4</b>	<b>250</b>	<b>348</b>	<b>4,091</b>

\*Demographic information had not been entered into CHRIS for 14 children.

The chart below shows that 60 percent of the children in foster care at the end of the SFY 2011 were white, while 23 percent of the children were black.

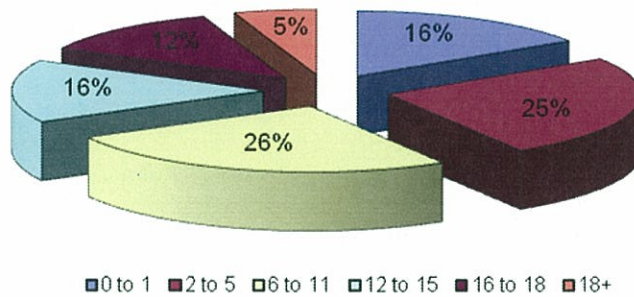
**18a: Race/Ethnicity of Children in Care at the End of the Year**





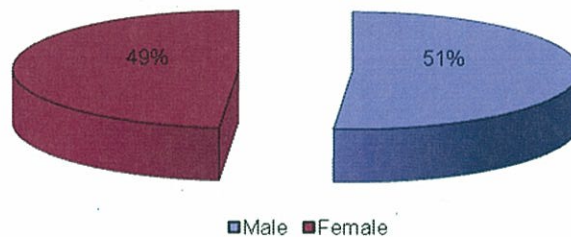
The following chart shows that children between the ages of six and 11 represented the highest percentage of children in care at the end of the year with a resulting figure of 26 percent. Children ages two to five years represented the second highest percentage of children (25%) who were in care at the end of the fiscal year.

**18b: Ages of Children in Care at the End of the Year**



The following chart shows the gender breakout of the children in foster care at the end of SFY 2011.

**Chart 18c: Gender of Children in Care at the End of the Year**



**Entries into Foster Care**

During SFY 2011, data show that 4,126 children entered foster care. This represents a slight decrease from the number of children who entered care during the last fiscal year (4,134). The following table outlines the characteristics of the children who entered foster care during SFY 2011.

**Table 7: Characteristics of Children who Entered Foster Care During the Year SFY 2011**

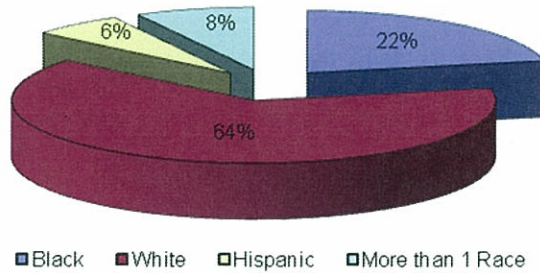
Age	Gender	White	Black	Asian	AIAN	NAPI	Hispanic	More Than 1 Race	Total
0 to 1	Female	278	110	0	0	2	26	36	452
	Male	325	125	0	1	1	26	43	521
2 to 5	Female	372	108	1	1	1	25	49	557
	Male	354	128	2	2	0	37	50	573
6 to 11	Female	355	109	1	0	0	46	32	543
	Male	344	99	2	0	0	29	42	516
12 to 15	Female	224	68	1	0	0	27	26	346
	Male	176	68	0	0	1	14	22	281
16 to 18	Female	107	46	1	0	0	11	15	180
	Male	86	34	0	0	0	9	10	139
18+	Female	0	0	0	0	0	0	0	0
	Male	0	1	0	0	0	0	0	1
<b>Total*</b>		<b>2,621</b>	<b>896</b>	<b>8</b>	<b>4</b>	<b>5</b>	<b>250</b>	<b>325</b>	<b>4,109</b>

\*Demographic information had not been entered into CHRIS for 17 children.

The chart on the following page shows that 64 percent of the children who entered foster care during the year were white, while 22 percent of the children were black. In addition, Hispanic children made up eight percent of the children who entered foster care. National data indicate that 45 percent of the children who entered care were white, 24 percent were black, and 21 percent were Hispanic.<sup>8</sup>

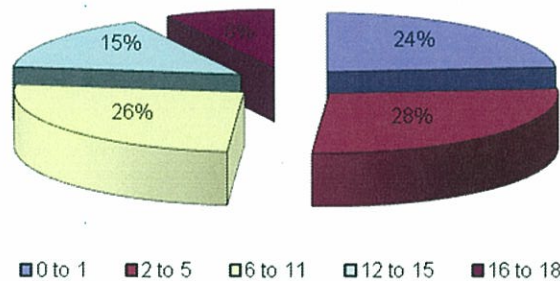
<sup>8</sup> Adoption and Foster Care Analysis and Reporting System (AFCARS) preliminary data submitted for children in foster care between 10/1/2009 and 9/30/2010 as of October 2010.

**Chart 19a: Race/Ethnicity of Children who Entered Care**



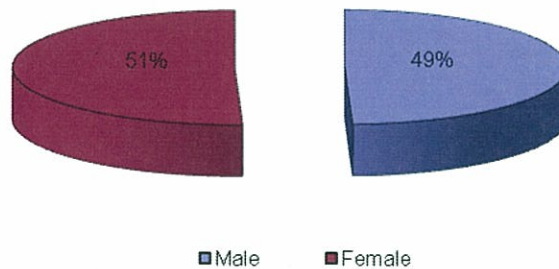
The following chart shows that 78 percent of the children who entered foster care during SFY 2011 were under the age of 12.

**Chart 19b: Ages of Children who Entered Care**



The following chart shows the gender of the children who entered foster care during SFY 2011. Fifty-one percent of the children were female and 49 percent were male. These percentages are similar to those reported for SFY 2010.

**Chart 19c: Gender of Children who Entered Care**

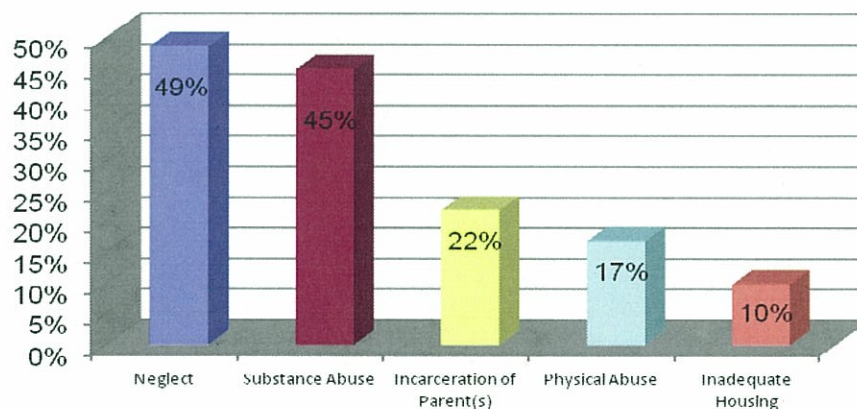


Neglect and substance abuse<sup>9</sup> were the most prevalent reasons children entered foster care.

**Table 8: Reasons Children Placed in Foster Care by Age During the Year SFY 2011**

	0 to 1	2 to 5	6 to 11	12 to 15	16 to 18	18+	Total
<b>Neglect</b>	473	569	533	299	133	3	<b>2,010</b>
<b>Substance Abuse</b>	454	554	501	236	110	2	<b>1,857</b>
<b>Parent Incarceration</b>	158	283	257	137	66	5	<b>906</b>
<b>Physical Abuse</b>	137	182	179	138	61	4	<b>701</b>
<b>Child's Behavior</b>	0	0	19	86	79	4	<b>188</b>
<b>Abandonment</b>	32	35	28	41	42	1	<b>179</b>
<b>Inadequate Housing</b>	92	126	109	62	19	1	<b>409</b>
<b>Caretaker Illness</b>	50	48	60	46	35	1	<b>240</b>
<b>Sexual Abuse</b>	11	51	112	103	37	0	<b>314</b>
<b>Truancy</b>	0	0	16	25	22	0	<b>63</b>
<b>Child's Disability</b>	1	0	9	2	2	0	<b>14</b>
<b>Parent Death</b>	1	8	7	7	1	0	<b>24</b>
<b>Sex Offender</b>	0	0	10	9	4	1	<b>24</b>
<b>Relinquishment</b>	3	2	1	2	0	0	<b>8</b>
<b>Managed Mental Health</b>	0	0	0	0	1	0	<b>1</b>
<b>Teen Parent in Care</b>	18	2	1	0	0	0	<b>21</b>
<b>Other</b>	0	0	0	10	4	0	<b>14</b>
<b>Total</b>	<b>1,430</b>	<b>1,860</b>	<b>1,842</b>	<b>1,203</b>	<b>616</b>	<b>22</b>	<b>6,973</b>

**Chart 20: Most Prevalent Reasons Children Entered Care**



<sup>9</sup> Of the 1,857 instances where entry was attributed to substance abuse, substance abuse by parents 1,803 instances) accounted for the largest percentage (97%) as compared to substance abuse by children (3%).

**Exits from Foster Care**

There were 4,071 children who exited foster care during SFY 2011, a six percent increase from SFY 2010 (3,831 children). The table below outlines the characteristics of the children who left foster care during SFY 2011.

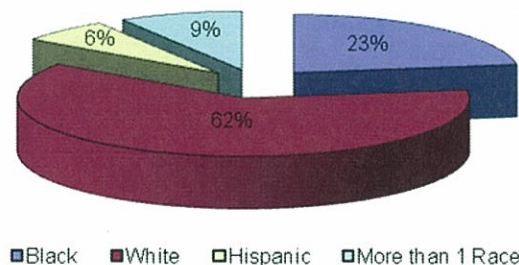
**Table 9: Characteristics of Children Exiting Foster Care During the Year SFY 2011**

Age	Gender	White	Black	Asian	AIAN	NAPI	Hispanic	More Than 1 Race	Total
0 to 1	Female	214	89	0	1	0	16	26	346
	Male	182	71	0	0	0	20	23	296
2 to 5	Female	395	125	2	2	0	45	53	622
	Male	328	116	1	3	1	33	70	552
6 to 11	Female	328	119	2	0	0	28	42	519
	Male	340	125	1	0	0	46	38	550
12 to 15	Female	184	64	0	0	0	23	21	292
	Male	190	61	1	0	0	22	30	304
16 to 18	Female	135	50	0	0	0	12	18	215
	Male	166	77	0	0	0	13	28	284
18+	Female	19	14	0	0	1	2	2	38
	Male	27	8	0	0	0	2	3	40
<b>Total*</b>		<b>2,508</b>	<b>919</b>	<b>7</b>	<b>6</b>	<b>2</b>	<b>262</b>	<b>354</b>	<b>4,058</b>

\*Demographic data had not been entered into CHRIS for 13 children.

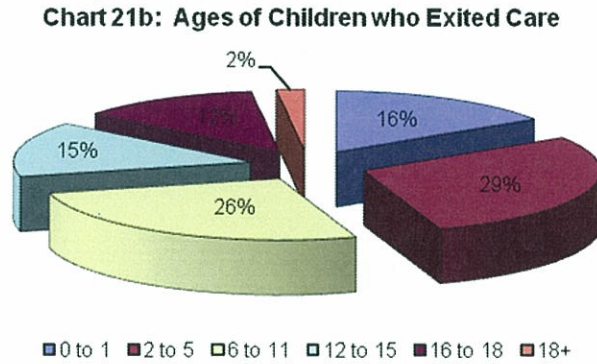
Of the 4,071 children who left foster care during the most recent state fiscal year, 62 percent were white and 23 percent were black. National data indicate that 43 percent of the children who leave foster care are white and 27 percent are black.<sup>10</sup>

**Chart 21a: Race/Ethnicity of Children who Exited Care**

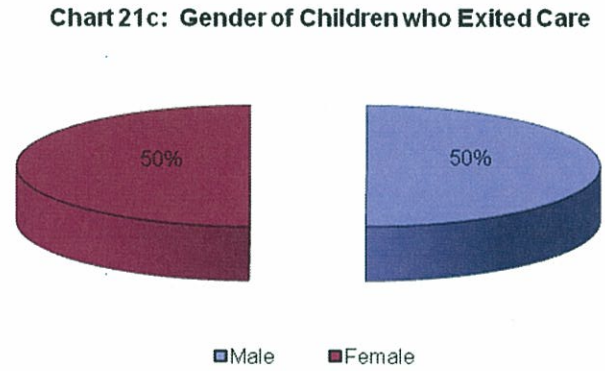


<sup>10</sup> Adoption and Foster Care Analysis and Reporting System (AFCARS) preliminary data submitted for children in foster care between 10/1/2009 and 9/30/2010 as of October 2010.

The following chart shows that children between the ages of two and five represented the highest percentage of children (29%) who exited foster care during the year, followed closely by children between the ages of six and 11 (26%).



Fifty percent of the children who left care during the year were female and 50 percent were male.



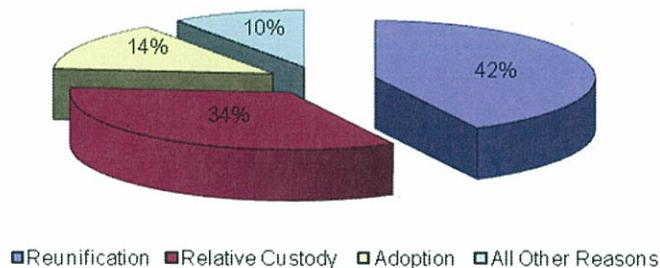
**Table 10: Reasons Children Exited Foster Care by Age  
SFY 2011**

Reason	Age						Total
	0 to 1	2 to 5	6 to 11	12 to 15	16 to 18	Over 18	
Reunification	271	513	499	282	159	0	<b>1,724</b>
Relative Custody	247	397	375	246	114	4	<b>1,383</b>
Adoption	105	235	165	47	15	0	<b>567</b>
Child Aged Out	0	0	0	0	181	64	<b>245</b>
Non-Relative Custody	13	23	28	19	20	2	<b>105</b>
Emancipation	0	0	0	0	6	5	<b>11</b>
Death of Child	4	1	0	0	1	0	<b>6</b>
Custody Transfer	2	3	2	2	3	3	<b>15</b>
Tribal Jurisdiction	0	2	0	0	0	0	<b>2</b>
<b>Total</b>	<b>642</b>	<b>1,174</b>	<b>1,069</b>	<b>596</b>	<b>499</b>	<b>78</b>	<b>4,058</b>

\*Demographic data had not been entered into CHRIS for 13 children.

The most prevalent reason children left foster care during SFY 2011 was reunification. Approximately two-fifths (42%) of the children exiting care reunified with their families; the result demonstrated a slight increase in comparison to SFY 2010 (39%). The second most prevalent reason was relative custody (34%), which experienced a two percentage point decrease from SFY 2010 (36%). Fourteen percent of the children left foster care to adoption. National data indicate that the three most prevalent reasons children exit care are reunification (52%), adoption (19%) and relative care (8%).<sup>12</sup>

**Chart 22: Most Prevalent Reasons for Children Exiting Care**



<sup>12</sup> Adoption and Foster Care Analysis and Reporting System (AFCARS) preliminary data submitted for children in foster care between 10/1/2007 and 9/30/2008 as of October 2009.

***Permanency Goals of Children in Foster Care***

The Division maintains two primary goals for children in foster care: safety and permanency. The second of these concerns is expressed by setting a permanency goal for each child in foster care within 30 days of the child entering care. Of the 4,105 children in foster care at the end of the quarter, 3,848 children had been in care for at least 30 days. Reunification (return home) remained the most prevalent goal among the children in foster care at 55 percent.

**Table 11: Permanency Goals of Children in Foster Care  
SFY 2011**

	SFY 2011		National <sup>13</sup>
<b>Return Home</b>	2,129	55%	49%
<b>Adoption</b>	777	20%	24%
<b>APPLA</b>	464	12%	N/A
<b>Relative Care</b>	110	3%	4%
<b>Guardianship</b>	25	1%	4%
<b>Emancipation</b>	0	0%	6%
<b>Long Term Care</b>	0	0%	8%
<b>Not Yet Established</b>	343	9%	5%
<b>Total</b>	<b>3,848</b>	<b>100%</b>	<b>100%</b>

<sup>13</sup> Adoption and Foster Care Analysis and Reporting System (AFCARS) preliminary data submitted for children in foster care between 10/1/2007 and 9/30/2008 as of October 2009.



***Length of Stay of Children in Foster Care***

For SFY 2011, 61 percent of the children in foster care were in care less than one year. The percentage of children in care for less than a year is higher for those in relative care (66%). Compared to national data, children in the Arkansas foster care system stay in care a substantially shorter amount of time.<sup>14</sup> (See Appendix E for an area and county breakdown.)

**Table 12: Length of Stay of Children in Foster Care  
SFY 2011**

	<b>Number</b>	<b>Percentage*</b>	<b>National</b>
<b>Less than 30 days</b>	1,215	15%	5%
<b>30-90 Days</b>	1,099	14%	20%
<b>3-6 Months</b>	1,016	13%	
<b>6-12 Months</b>	1,525	19%	17%
<b>12-24 Months</b>	1,560	20%	23%
<b>24-36 Months</b>	676	8%	12%
<b>36+ Months</b>	868	11%	24%
<b>Total*</b>	<b>7,959</b>	<b>100%</b>	<b>100%</b>

**Table 13: Length of Stay of Children in Relative Care  
SFY 2011**

	<b>Number</b>	<b>Percentage</b>
<b>Less than 30 days</b>	94	7%
<b>30-90 Days</b>	194	15%
<b>3-6 Months</b>	212	16%
<b>6-12 Months</b>	378	28%
<b>12-24 Months</b>	305	23%
<b>24-36 Months</b>	111	8%
<b>36+ Months</b>	40	3%
<b>Total</b>	<b>1,334</b>	<b>100%</b>

<sup>14</sup> Adoption and Foster Care Analysis and Reporting System (AFCARS) preliminary data submitted for children in foster care between 10/1/2007 and 9/30/2008 as of October 2009.

**Number of Placements of Children in Foster Care**

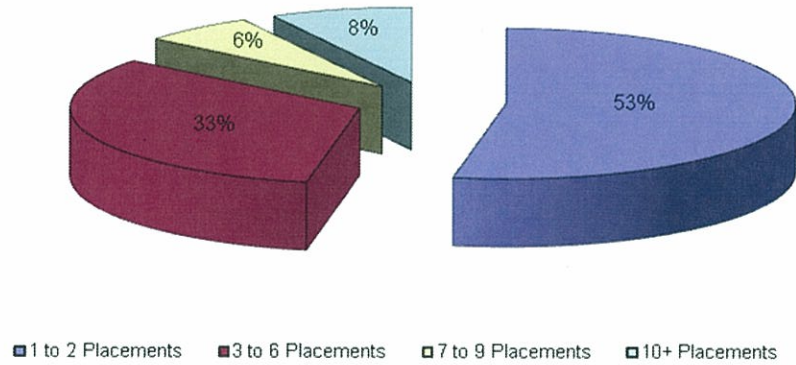
Overall, 53 percent of the children in care at the end of SFY 2011 experienced two or fewer placements. The result is similar to that of the previous SFY. It is not surprising that the likelihood of multiple placements increases the longer children remain in foster care.

**Table 14: Number of Placements of Children in Foster Care  
SFY 2011**

	Children in FC Less Than 12 Months		Children in FC 12 and 24 Months		Children in FC More Than 24 Months		Total	
<b>1-2 Placements</b>	1,590	73%	387	42%	195	19%	2,172	53%
<b>3-6 Placements</b>	551	25%	429	46%	367	37%	1,347	33%
<b>7-9 Placements</b>	30	1%	86	9%	145	14%	261	6%
<b>10+ Placements</b>	4	0%	23	2%	298	30%	325	8%
<b>Total*</b>	<b>2,175</b>	<b>100%</b>	<b>925</b>	<b>100%</b>	<b>1,005</b>	<b>100%</b>	<b>4,105</b>	<b>100%</b>

\*Sum of individual percentages may not equal 100% due to rounding.

Chart 23: Number of Placements



**Characteristics of Children who Experienced Three or More Placements**

As noted previously, there were 4,105 children in care at the end of the year. Of those, 1,933 (47%) children experienced three or more placements while in foster care.

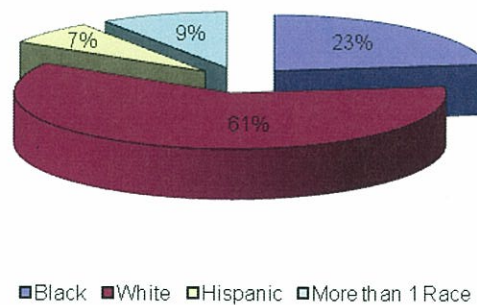
**Table 15: Characteristics of Children who Experienced Three or More Placements SFY 2011**

Age	Gender	White	Black	Asian	AIAN	NAPI	Hispanic	More Than 1 Race	Total
0 to 1	Female	57	25	0	0	0	2	8	92
	Male	89	28	0	0	0	6	15	138
2 to 5	Female	128	29	0	0	0	9	18	184
	Male	139	40	0	0	0	17	21	217
6 to 11	Female	136	43	0	0	0	20	16	215
	Male	164	55	0	1	0	20	32	272
12 to 15	Female	125	48	0	0	0	15	16	204
	Male	141	65	0	1	0	18	25	250
16 to 18	Female	80	47	0	0	0	15	16	158
	Male	83	53	1	0	0	8	13	158
18+	Female	10	4	0	0	0	1	1	16
	Male	14	6	0	0	0	0	1	21
<b>Total</b>		<b>1,166</b>	<b>443</b>	<b>1</b>	<b>2</b>	<b>0</b>	<b>131</b>	<b>182</b>	<b>1,925</b>

\*Demographic data had not been entered into CHRIS for eight children.

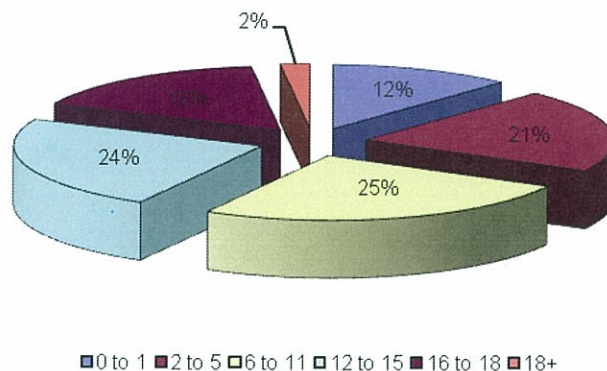
Of the children who experienced three or more placements, 61 percent were white and 23 percent were black.

**Chart 24a: Race/Ethnicity of Children Who Experienced Three or More Placements**



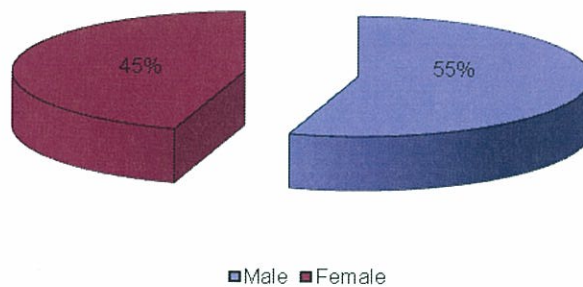
The largest group of children who experienced three or more placements was between the ages of six and 11 (25%), followed closely by children ages 12 to 15 (24%).

Chart 24b: Ages of Children who Experienced Three or More Placements



More male children (55%) than female children (45%) experienced three or more placements while in care.

Chart 24c: Gender of Children Who Experienced Three or More Placements



***Current Placement of Children in Foster Care***

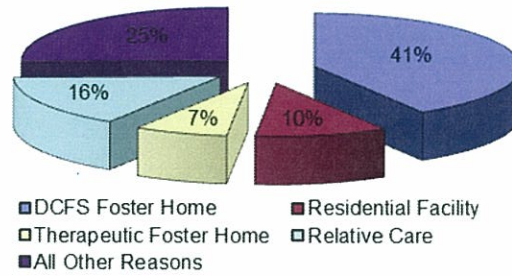
More children who remained in foster care at the end of SFY 2011 were placed in foster homes. Forty-one percent of the children were in DCFS foster homes. Aside from non-relative family foster homes, the most common placement options for children residing in care were residential facilities (10%), relative care (8%) and therapeutic foster care (7%).

**Table 16: Current Placement of Children in Foster Care  
SFY 2011**

Placement	Age						Total
	0 to 1	2 to 5	6 to 11	12 to 15	16 to 18	Over 19	
DCFS Foster Home (None-Relative)	422	584	377	159	118	34	1,694
DCFS Foster Home (Relative)	42	118	99	35	21	3	318
Therapeutic Foster Home	2	46	136	80	23	10	297
Pre-Adoptive Home (Non-Relative)	34	59	35	10	3	0	141
Pre-Adoptive Home (Relative)	0	7	2	4	1	0	14
Emergency Shelter	5	19	67	34	28	0	153
Residential Facility	16	27	88	120	126	49	426
Youth Services	0	0	0	4	16	2	22
Runaway	0	0	1	11	29	3	44
Trial Home Visit	32	58	70	45	19	0	224
Hospital/Medical	5	2	3	8	8	0	26
ASAP Residential Treatment	0	0	0	3	8	3	14
Incarceration	0	0	0	2	6	1	9
ASAP CRT	0	0	0	8	6	0	14
Acute CRT	0	0	3	5	14	0	22
Sub-Acute CRT	0	0	37	62	38	0	137
Independent Living	0	0	1	0	9	104	114
Temporary Placement	6	21	28	16	9	2	82
ASAP Therapeutic Foster Care	0	0	0	4	5	4	13
DDS Placement	0	0	2	3	1	0	6
Provisional Relative	79	107	108	22	9	1	326
DYS After Care	0	0	0	1	0	0	1
Unknown*	5	0	0	2	1	0	8
<b>Total</b>	<b>648</b>	<b>1,048</b>	<b>1,057</b>	<b>638</b>	<b>498</b>	<b>216</b>	<b>4,105</b>

\*Unknown due to data entry after report completion.

Chart 25: Current Placement of Children in Care



**Characteristics of Children on Runaway Status at the End of the Year**

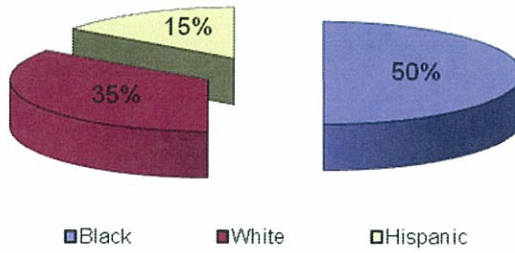
For SFY 2011, 46 children were in runaway status at the end of the year. This was a decrease of four children from the end of SFY 2010 (50).

Table 17: Characteristics of Children on Runaway Status at the End of the Year SFY 2011

Age	Gender	White	Black	Asian	AIAN	NAPI	Hispanic	More Than 1 Race	Total
0 to 1	Female	0	0	0	0	0	0	0	0
	Male	0	0	0	0	0	0	0	0
2 to 5	Female	0	0	0	0	0	0	0	0
	Male	0	0	0	0	0	0	0	0
6 to 11	Female	0	0	0	0	0	0	0	0
	Male	1	0	0	0	0	0	0	1
12 to 15	Female	3	4	0	0	0	1	0	8
	Male	1	2	0	0	0	0	0	3
16 to 18	Female	6	8	0	0	0	4	0	18
	Male	4	7	0	0	0	2	0	13
18+	Female	0	0	0	0	0	0	0	0
	Male	1	2	0	0	0	0	0	3
<b>Total</b>		<b>16</b>	<b>23</b>	<b>0</b>	<b>0</b>	<b>0</b>	<b>7</b>	<b>0</b>	<b>46</b>

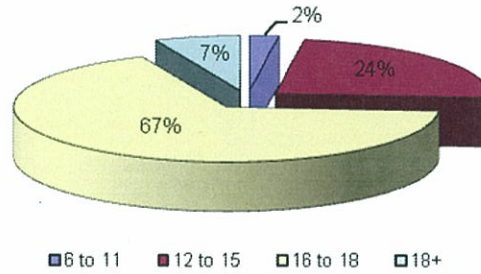
Of the children on runaway status at the end of the year, 35 percent were white and 50 percent were black.

**Chart 26a: Race/Ethnicity of Children on Runaway Status at the End of the Quarter**



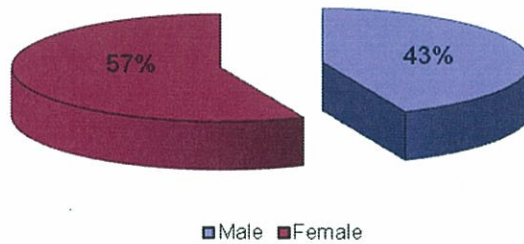
Sixty-seven percent of the children who were on runaway status at the end of the year were between the ages of 16 and 18.

**Chart 26b: Ages of Children on Runaway Status at the End of the Quarter**



More female children (57%) than male children (43%) were on runaway status at the end of the year.

**Chart 26c: Gender of Children on Runaway Status at the End of the Quarter**



**Characteristics of Children in Relative Care**

There were 1,334 children who were in relative care anytime during SFY 2011. The table below outlines the demographics of those children.

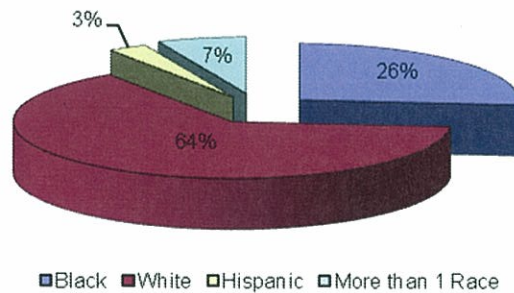
**Table 18: Characteristics of Children in Relative Care  
SFY 2011**

Age	Gender	White	Black	Asian	AIAN	NAPI	Hispanic	More Than 1 Race	Total
0 to 1	Female	71	27	0	0	0	0	11	109
	Male	84	29	0	0	0	3	2	118
2 to 5	Female	148	53	0	0	1	2	17	221
	Male	157	50	0	0	0	8	22	237
6 to 11	Female	121	54	0	0	0	9	12	196
	Male	135	60	0	0	0	6	13	214
12 to 15	Female	57	18	0	0	0	3	5	83
	Male	41	23	0	0	0	1	4	69
16 to 18	Female	22	11	0	0	0	2	1	36
	Male	12	22	0	0	0	4	1	39
18 +	Female	3	2	0	0	0	0	0	5
	Male	2	1	0	0	0	0	0	3
<b>Total</b>		<b>853</b>	<b>350</b>	<b>0</b>	<b>0</b>	<b>1</b>	<b>38</b>	<b>88</b>	<b>1,330</b>

\*Demographic data had not been entered into CHRIS for four children.

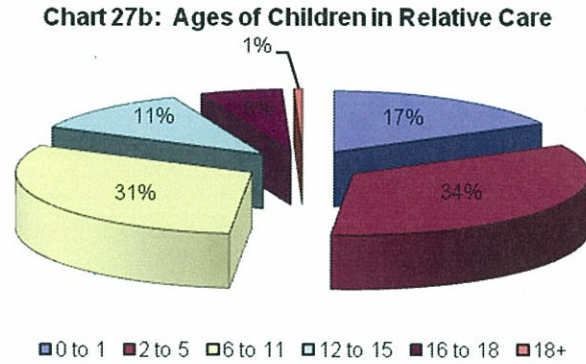
White children represented the highest percentage of children (64%) in relative care during the 2011 SFY, similar to the percentage reported for SFY 2010 (62%). Meanwhile, black children represented 26 percent, a slight percentage point decrease from SFY 2010 (28%).

**Chart 27a: Race/Ethnicity of Children in Relative Care**

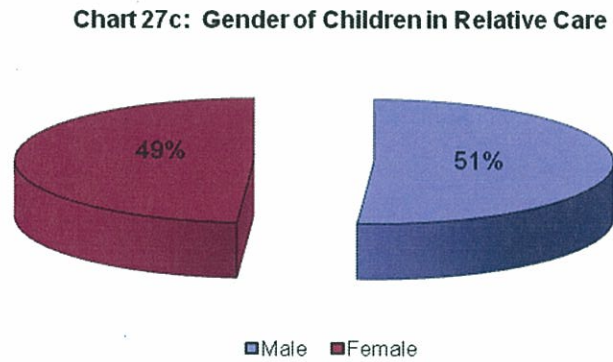




Children between the ages of two and five represented the largest age group of children in relative care (34%), followed by children between the ages of six and 11 (31%).



Of the children who were in relative care during the year, 49 percent were female and 51 percent were male.



**Part III: Description of Population and Services**  
**Section III: Adoption**

***Characteristics of Children with the Permanency Goal of Adoption at the End of the Year***

There were 777 children in care at the end of SFY 2011 whose permanency goal was adoption. This was an increase from SFY 2010 (770). The following table outlines the characteristics of those children.

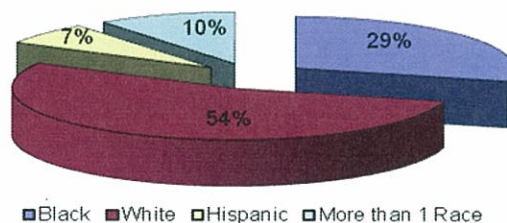
**Table 19: Characteristics of Children with the Permanency Goal of Adoption at the End of the Year SFY 2011**

Age	Gender	White	Black	Asian	AIAN	NAPI	Hispanic	More Than 1 Race	Total
0 to 1	Female	30	9	0	0	0	2	2	43
	Male	18	10	0	0	0	1	1	30
2 to 5	Female	50	25	0	0	0	9	7	91
	Male	51	23	1	0	0	2	10	87
6 to 11	Female	72	38	0	0	0	9	22	141
	Male	64	37	0	0	0	5	11	117
12 to 15	Female	41	26	0	0	0	8	16	91
	Male	52	30	0	0	0	8	6	96
16 to 18	Female	19	11	1	0	0	3	2	36
	Male	17	14	0	0	0	5	2	38
18 +	Female	0	1	0	0	0	0	0	1
	Male	2	0	0	0	0	1	0	3
<b>Total</b>		<b>416</b>	<b>224</b>	<b>2</b>	<b>0</b>	<b>0</b>	<b>53</b>	<b>79</b>	<b>774</b>

\*Demographic data had not been entered into CHRIS for three children.

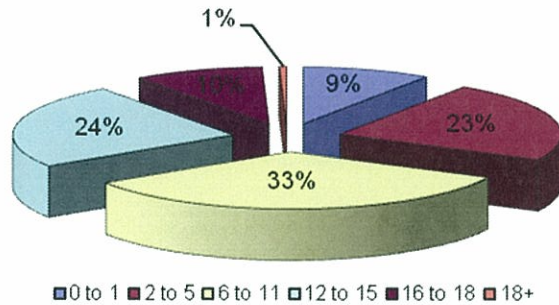
Fifty-four percent of the children with the permanency goal of adoption were white, 29 percent were black, and ten percent were multiracial. These percentages were similar to those reported for SFY 2010.

**Chart 28a: Race/Ethnicity of Children with Permanency Goal of Adoption at the End of the Year**



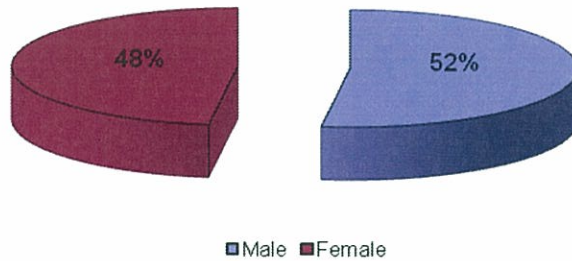
Children between the ages of six and 11 represented the largest group of children with the permanency goal of adoption who were in care at the end of the year (33%). Children ages 12 to 15 represented the second largest group of such children (24%), followed closely by those between two and five (23%).

**Chart 28b: Ages of Children with Permanency Goal of Adoption at the End of the Year**



More male children (52%) than female children (48%) who were in care at the end of the state fiscal year had a permanency goal of adoption.

**28c: Gender of Children with Permanency Goal of Adoption at the End of the Year**



**Characteristics of Children whose Parents had their Parental Rights Terminated During the Year**

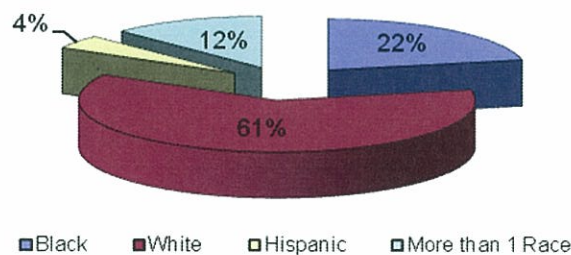
There were 553 children whose parents had their parental rights terminated during SFY 2011. The table below outlines the characteristics of those children.

**Table 20: Characteristics of Children whose Parents have had Parental Rights Terminated at the end of the Year  
SFY 2011**

Age	Gender	White	Black	Asian	AIAN	NAPI	Hispanic	More Than 1 Race	Total
0 to 1	Female	12	3	0	0	0	0	1	16
	Male	12	3	0	0	0	0	2	17
2 to 5	Female	40	7	0	0	0	1	9	57
	Male	31	12	0	0	0	2	10	55
6 to 11	Female	49	19	0	0	0	1	6	75
	Male	52	22	0	0	0	8	18	100
12 to 15	Female	45	14	0	0	0	2	6	67
	Male	46	18	0	0	0	3	12	79
16 to 18	Female	20	7	0	0	0	2	2	31
	Male	26	10	1	0	0	2	3	42
18+	Female	3	3	0	0	0	0	0	6
	Male	3	2	0	0	0	3	0	8
<b>Total</b>		<b>339</b>	<b>120</b>	<b>1</b>	<b>0</b>	<b>0</b>	<b>24</b>	<b>69</b>	<b>553</b>

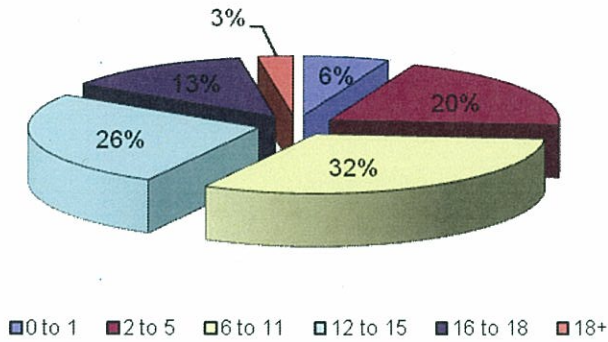
Sixty-one percent of the children whose parents had their parental rights terminated during SFY 2011 were white, while 22 percent of the children were black and four percent were Hispanic.

**Chart 31a: Race/Ethnicity of Children whose Parents have had Parental Rights Terminated**



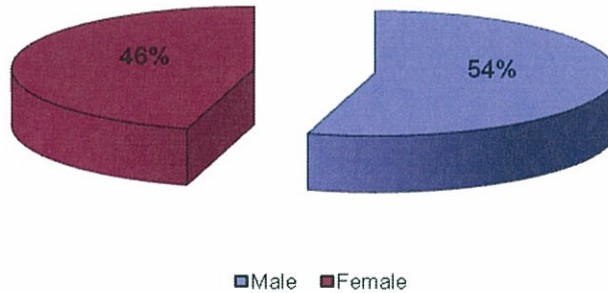
The largest group of children whose parents had their parental rights terminated during SFY 2011 was between the ages of six and eleven (32%).

**Chart 31b: Ages of Children whose Parents have had Parental Rights Terminated**



There were more male children (54%) than female children (46%) whose parents' parental rights were terminated during SFY 2011.

**Chart 31c: Gender of Children whose Parents have had Parental Rights Terminated**



**Characteristics of Children Available for Adoption at the End of the Year**

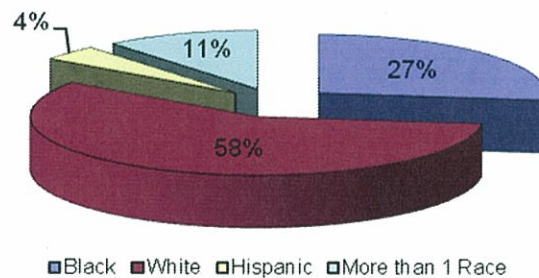
There were 362 children available for adoption at the end of SFY 2011. Demographic information for children available for adoption is very similar to previous years.

**Table 21: Characteristics of Children Available for Adoption at the End of the Year SFY 2011**

Age	Gender	White	Black	Asian	AIAN	NAPI	Hispanic	More Than 1 Race	Total
0 to 1	Female	7	3	0	0	0	0	0	10
	Male	6	2	0	0	0	0	1	9
2 to 5	Female	22	7	0	0	0	1	5	35
	Male	16	11	0	0	0	0	4	31
6 to 11	Female	34	18	0	0	0	0	2	54
	Male	37	20	0	0	0	6	12	75
12 to 15	Female	33	13	0	0	0	2	4	52
	Male	29	14	0	0	0	3	10	56
16 to 18	Female	11	5	0	0	0	2	0	17
	Male	14	4	1	0	0	1	2	23
<b>Total</b>		<b>209</b>	<b>97</b>	<b>1</b>	<b>0</b>	<b>0</b>	<b>15</b>	<b>40</b>	<b>362</b>

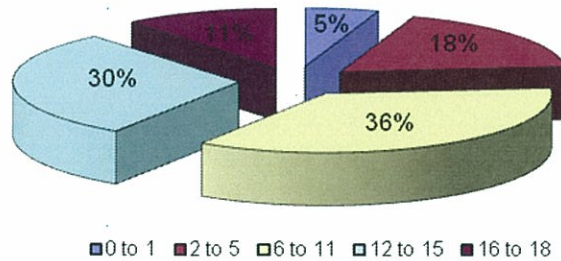
Fifty-eight percent of the children available for adoption at the end of SFY 2011 were white, while 27 percent of the children were black and four percent were Hispanic.

**Chart 30a: Race/Ethnicity of Children Available for Adoption at the End of the Year**



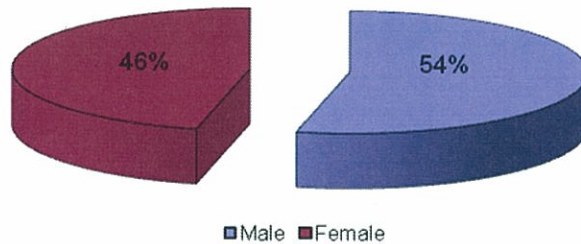
More children between the ages of six and 11 (36%) were available for adoption at the end of SFY 2011 than any other group of children. These percentages were similar to SFY 2010.

**Chart 30b: Age of Children Available for Adoption at the End of the Year**



More male children (54%) than female children (46%) were available for adoption at the end of the fiscal year.

**Chart 30c: Gender of Children Available for Adoption at the End of the Year**



***Current Placement of Children Available for Adoption***

More children who were available for adoption at the end of the SFY 2011 were placed in DCFS foster homes (32%) than in any other type of placement setting. These results are similar to previous years.

**Table 22: Current Placement of Children Available for Adoption  
SFY 2011**

Placement	Number of Children	Percentage
DCFS Foster Home	114	31%
Pre-Adoptive Home	59	16%
Therapeutic Foster Home	91	25%
Relative Care	2	1%
Residential Facility	43	12%
Hospital/Medical	7	2%
Emergency Shelter	7	2%
Sub-Acute CRT	21	6%
Runaway	1	0.3%
ASAP Therapeutic Foster Care	3	1%
Temporary Placement	3	1%
Youth Services	1	0.3%
Acute CRT	4	1%
DDS Placement	3	1%
Independent Living	3	1%
<b>Total*</b>	<b>362</b>	<b>100%</b>

\*Sum of individual percentages may not equal 100% due to rounding.



**Characteristics of Children Placed in Pre-adoptive Homes**

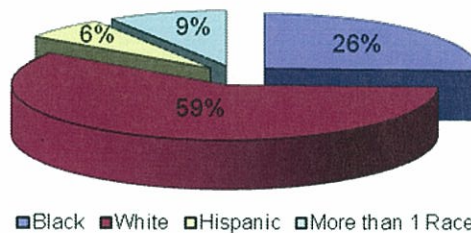
There were 430 children placed into pre-adoptive homes during SFY 2011. This number represented a 26 percent increase from the 342 children placed in pre-adoptive homes during SFY 2010. The characteristics of the children placed during the latest state fiscal year are outlined in the table below.

**Table 23: Characteristics of Children Placed in Pre-adoptive Homes SFY 2011**

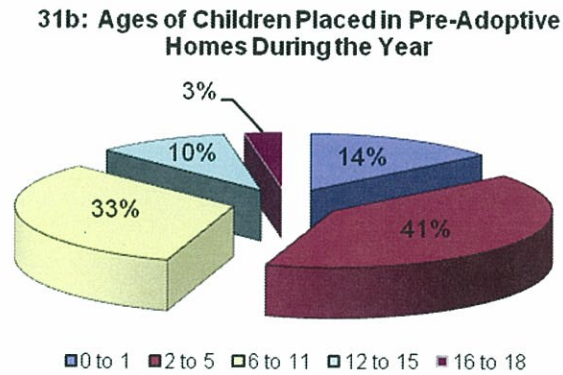
Age	Gender	White	Black	Asian	AIAN	NAPI	Hispanic	More Than 1 Race	Total
0 to 1	Female	19	2	0	0	0	3	1	28
	Male	22	10	0	0	0	0	1	33
2 to 5	Female	38	20	0	0	0	8	9	75
	Male	54	31	0	0	0	6	9	100
6 to 11	Female	46	21	0	0	0	4	4	75
	Male	35	16	0	0	0	5	9	65
12 to 15	Female	16	2	0	0	0	0	1	23
	Male	16	4	0	0	0	1	2	19
16 to 18	Female	5	0	0	0	0	0	2	7
	Male	3	1	0	0	0	0	1	5
<b>Total</b>		<b>254</b>	<b>110</b>	<b>0</b>	<b>0</b>	<b>0</b>	<b>27</b>	<b>39</b>	<b>430</b>

Of the 430 children placed into a pre-adoptive home during the year, 59 percent were white, compared to 61 percent in SFY 2010, and 26 percent were black, compared to 24 percent in SFY 2010.

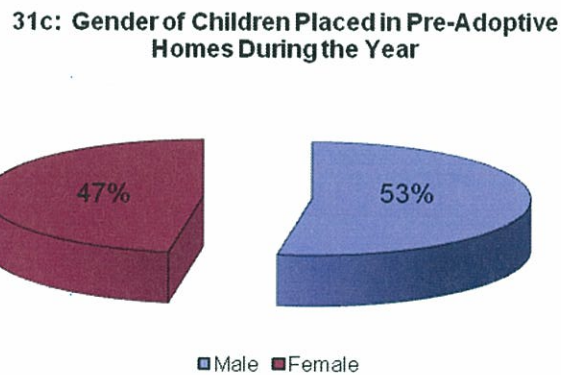
**Chart 31a: Race/Ethnicity of Children Placed in Pre-Adoptive Homes During the Year**



The largest group of children placed into a pre-adoptive home was between the ages of two and five (41%), followed by children between the ages of six and 11 (33%).



Of the children placed into a pre-adoptive home during SFY 2011, 53 percent were male and 47 percent were female.



***Children not Placed in Pre-adoptive Homes who are Available for Adoption***

At the end of the SFY 2011, there were 303 children who were available for adoption but who were not placed in pre-adoptive homes, a decrease from SFY 2010 (439). This statistic was derived by subtracting the number of children placed in pre-adoptive homes at the end of the SFY (59)<sup>15</sup> from the number of children available for adoption at the end of the year (362).

***Special Needs***

There were 287 children with special needs who were placed in a pre-adoptive home during SFY 2011.<sup>16</sup> Children with special needs are generally defined as Caucasian children over the age of nine, African American children who are two years of age or older, or children who are members of a sibling group. Children may fall into more than one category. The definition of special needs children also includes those who have severe medical or psychological needs that require ongoing treatment; data are not available for this last category.

**Table 24: Children with Special Needs Placed in Pre-adoptive Homes  
SFY 2010**

<b>Special Need Condition</b>	<b>Number of Children</b>
<b>Race/Ethnicity</b>	286
<b>Age</b>	251
<b>Member of Sibling Group</b>	169

<sup>15</sup> Although only 59 children are identified as residing in pre-adoptive homes as of the end of the year, many more are in the process of being adopted by their foster family homes.

<sup>16</sup> This number does not take into account children with severe medical and psychological needs because this data is not available in CHRIS (AR Children’s Reporting and Information System). As enhancements are made to the data system to capture this information, the data will be provided in future reports.

**Characteristics of Children with Finalized Adoptions**

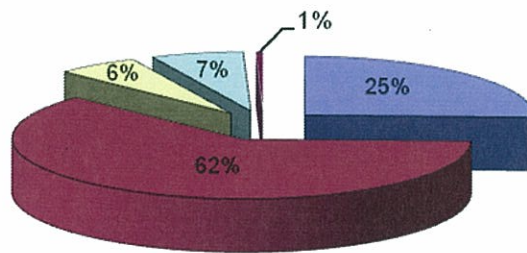
There were 583 children whose adoption was finalized during SFY 2011. This represented a slight increase from SFY 2010 (580). The characteristics of those children are outlined in the following table.

**Table 25: Characteristics of Children with Finalized Adoptions  
SFY 2011**

Age	Gender	White	Black	Asian	AIAN	NAPI	Hispanic	More Than 1 Race	Total
0 to 1	Female	27	9	0	0	0	3	6	45
	Male	36	15	0	0	0	3	3	57
2 to 5	Female	59	27	0	2	0	7	11	106
	Male	90	33	0	0	0	8	8	139
6 to 11	Female	61	29	0	0	0	6	3	99
	Male	40	23	0	1	0	3	5	72
12 to 15	Female	21	5	0	0	0	0	1	27
	Male	16	3	0	0	0	4	0	23
16 to 18	Female	9	3	0	0	0	0	0	12
	Male	1	1	0	0	0	0	1	3
<b>Total</b>		<b>360</b>	<b>148</b>	<b>0</b>	<b>3</b>	<b>0</b>	<b>34</b>	<b>38</b>	<b>583</b>

Of the children whose adoptions were finalized during SFY 2011, 62 percent of the children were white, 25 percent were black and six percent were Hispanic.

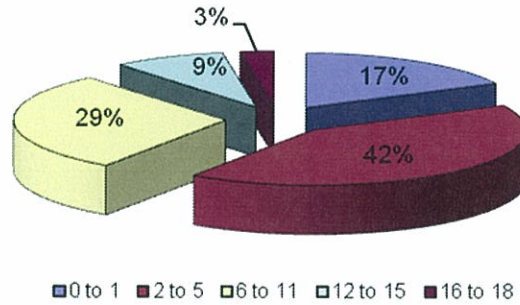
**32a: Race/Ethnicity of Children with Finalized Adoptions During the Year**



■ Black ■ White ■ Hispanic ■ More than 1 Race ■ Other

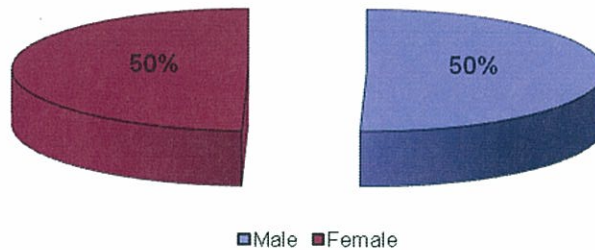
Children between the ages of two and five represent the largest group of children (42%) whose adoption was finalized during SFY 2011, followed by children between the ages of six and 11 (29%).

**Chart 32b: Ages of Children with Finalized Adoptions During the Year**



The gender distribution for children whose adoption was finalized during SFY 2011 were evenly split.

**Chart 32c: Gender of Children with Finalized Adoptions During the Year**



**Subsidized Adoptions**

There were 491 children who began receiving adoption subsidies during SFY 2011. Of those, 418 children were receiving federally-funded subsidies, while 73 were receiving state-funded subsidies. In SFY 2010, 514 children received adoption subsidies, which consisted of 436 federally-funded subsidies and 78 state-funded subsidies.

**Characteristics of Children who Receive Adoption Subsidies**

In total, 4,505 children received adoption subsidies during SFY 2011. This was an increase of nine percent from SFY 2010 (4,131). The following table outlines the characteristics of the children in receipt of subsidy payments for the current state fiscal year.

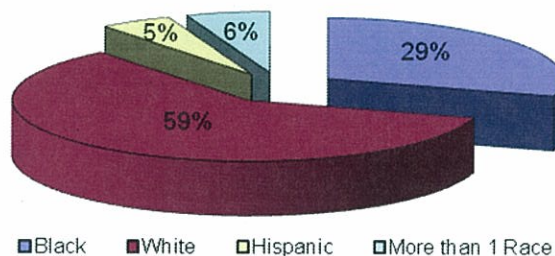
**Table 26: Characteristics of Children Receiving Adoption Subsidies  
SFY 2011**

Age	Gender	White	Black	Asian	AIAN	NAPI	Hispanic	More Than 1 Race	Total
0 to 1	Female	22	5	0	0	0	2	4	33
	Male	24	12	0	0	0	1	1	38
2 to 5	Female	262	100	2	3	0	24	41	432
	Male	262	117	2	1	0	28	34	444
6 to 11	Female	484	243	2	0	0	49	61	839
	Male	510	250	3	2	1	55	51	872
12 to 15	Female	315	196	1	4	0	24	25	565
	Male	338	153	0	0	1	21	14	527
16 to 18	Female	141	81	0	0	0	10	9	241
	Male	144	82	0	1	0	2	10	239
18+	Female	90	47	0	0	0	3	4	144
	Male	80	32	0	0	0	2	3	117
<b>Total*</b>		<b>2,672</b>	<b>1,318</b>	<b>10</b>	<b>11</b>	<b>2</b>	<b>221</b>	<b>257</b>	<b>4,491</b>

\*Demographic data had not been entered into CHRIS for 14 children.

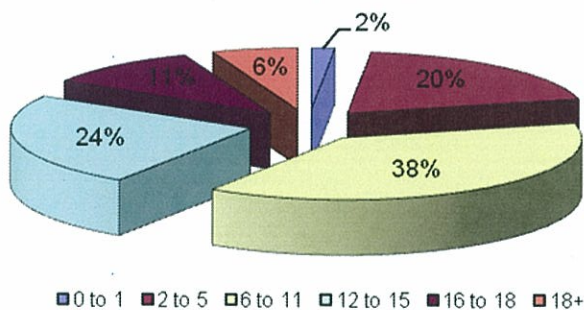
Fifty-nine percent of the children who received an adoption subsidy during the year were white, while 29 percent were black.

**33a: Race/Ethnicity of Children Receiving Adoption Subsidies During the Year**



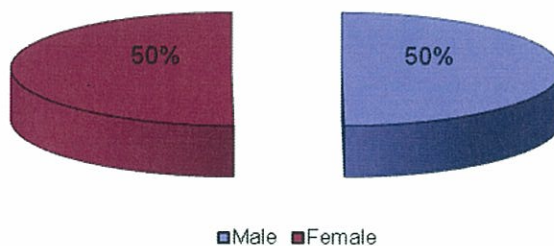
Children between the ages of six and 11 represent the largest group (38%) of children receiving an adoption subsidy.

**33b: Ages of Children Receiving Adoption Subsidies During the Year**



Fifty percent of the children receiving an adoption subsidy during the year were male and 50 percent were female.

**33c: Gender of Children Receiving Adoption Subsidies During the Year**



**APPENDICES**



**APPENDIX A: Child Maltreatment Assessments by Area and County**

Area	County	Total	TRUE	True %	Unsub*	Exempt Religion	Exempt UJO	Exempt Prenatal	UTL	Unknown
1	Benton (Bentonville)	2273	469	20.63%	1663	1	13	17	70	40
1	Carroll (Berryville)	317	62	19.56%	233	0	1	0	18	3
1	Madison (Huntsville)	223	41	18.39%	150	0	1	3	16	12
1	Washington (Fayetteville)	2511	575	22.90%	1256	0	9	23	68	580
	<b>Area Total</b>	<b>5,324.00</b>	<b>1,147.00</b>	<b>21.54%</b>	<b>3,302.00</b>	<b>1.00</b>	<b>24.00</b>	<b>43.00</b>	<b>172.00</b>	<b>635.00</b>
2	Crawford (Van Buren)	866	176	20.32%	639	0	2	4	21	24
2	Franklin (Ozark)	240	75	31.25%	144	0	0	6	3	12
2	Johnson (Clarksville)	377	112	29.71%	250	0	1	0	8	6
2	Logan (Booneville)	178	42	23.60%	122	0	1	4	9	0
2	Logan (Paris)	130	31	23.85%	93	0	0	1	4	1
2	Scott (Waldron)	174	36	20.69%	124	0	0	1	13	0
2	Sebastian (Fort Smith)	1702	400	23.50%	1015	2	12	28	123	122
2	Yell (Danville)	323	58	17.96%	256	0	3	3	3	0
	<b>Area Total</b>	<b>3,990.00</b>	<b>930.00</b>	<b>23.31%</b>	<b>2,643.00</b>	<b>2.00</b>	<b>19.00</b>	<b>47.00</b>	<b>184.00</b>	<b>165.00</b>
3	Clark (Arkadelphia)	189	36	19.05%	143	0	2	2	4	2
3	Garland (Hot Springs)	1204	177	14.70%	895	0	5	36	77	14
3	Hot Spring (Malvern)	431	81	18.79%	319	1	1	9	16	4
3	Howard (Nashville)	143	31	21.68%	106	0	0	2	1	3
3	Montgomery (Mount Ida)	91	17	18.68%	61	1	1	2	0	9
3	Perry (Perryville)	111	14	12.61%	86	0	1	1	5	4
3	Pike (Murfreesboro)	105	15	14.29%	88	0	0	0	1	1
3	Polk (Mena)	261	61	23.37%	178	0	0	2	15	5
3	Saline (Benton)	1090	175	16.06%	830	1	7	10	54	13
	<b>Area Total</b>	<b>3,625.00</b>	<b>607.00</b>	<b>16.74%</b>	<b>2,706.00</b>	<b>3.00</b>	<b>17.00</b>	<b>64.00</b>	<b>173.00</b>	<b>55.00</b>
4	Columbia (Magnolia)	188	59	31.38%	114	1	0	1	8	5
4	Hempstead (Hope)	196	53	27.04%	122	1	1	1	7	11
4	Lafayette (Lewisville)	67	12	17.91%	52	0	0	0	2	1
4	Little River (Ashdown)	127	34	26.77%	72	0	0	4	14	3
4	Miller (Texarkana)	485	119	24.54%	284	2	1	13	64	2
4	Nevada (Prescott)	94	26	27.66%	52	0	0	1	2	13
4	Ouachita (Camden)	277	92	33.21%	173	1	0	2	7	2
4	Sevier (DeQueen)	143	40	27.97%	87	0	1	1	11	3
4	Union (El Dorado)	355	106	29.86%	212	0	2	6	21	8
	<b>Area Total</b>	<b>1,932.00</b>	<b>541.00</b>	<b>28.00%</b>	<b>1,168.00</b>	<b>5.00</b>	<b>5.00</b>	<b>29.00</b>	<b>136.00</b>	<b>48.00</b>
5	Baxter (Mountain Home)	394	85	21.57%	297	0	0	2	9	1
5	Boone (Harrison)	547	145	26.51%	382	0	0	3	9	8
5	Conway (Morrilton)	329	117	35.56%	195	0	1	9	4	3
5	Faulkner (Conway)	966	237	24.53%	630	0	8	9	59	23
5	Marion (Yellville)	173	37	21.39%	128	0	1	2	3	2
5	Newton (Jasper)	72	21	29.17%	49	0	1	0	0	1
5	Pope (Russellville)	774	235	30.36%	512	0	3	6	17	1
5	Searcy (Marshall)	101	21	20.79%	76	0	1	0	2	1
5	Van Buren (Clinton)	230	53	23.04%	168	0	0	1	4	4
	<b>Area Total</b>	<b>3,586.00</b>	<b>951.00</b>	<b>26.52%</b>	<b>2,437.00</b>	<b>0.00</b>	<b>15.00</b>	<b>32.00</b>	<b>107.00</b>	<b>44.00</b>
6	Pulaski (East)	482	94	19.50%	354	0	3	13	18	0
6	Pulaski (Jacksonville)	773	165	21.35%	562	0	2	14	28	2
6	Pulaski (North)	907	202	22.27%	647	0	7	27	22	2
6	Pulaski (South)	1023	199	19.45%	743	0	3	20	53	5
6	Pulaski (Southwest)	629	181	28.78%	413	0	4	16	15	0
	<b>Area Total</b>	<b>3,814.00</b>	<b>841.00</b>	<b>22.05%</b>	<b>2,719.00</b>	<b>0.00</b>	<b>19.00</b>	<b>90.00</b>	<b>136.00</b>	<b>9.00</b>

SFY 2011 ANNUAL REPORT CARD – APPENDICES

Area	County	Total	TRUE	True %	Unsub*	Exempt Religion	Exempt UJO	Exempt Prenatal	UTL	Unknown
7	Bradley (Warren)	124	24	19.35%	88	0	2	0	6	4
7	Calhoun (Hampton)	42	6	14.29%	33	0	0	0	3	0
7	Cleveland (Rison)	75	15	20.00%	59	0	0	0	1	0
7	Dallas (Fordyce)	102	22	21.57%	75	0	0	1	4	0
7	Grant (Sheridan)	205	43	20.98%	151	0	1	1	9	0
7	Jefferson (Pine Bluff)	752	191	25.40%	495	2	2	13	41	8
7	Lincoln (Star City)	126	32	25.40%	91	0	0	1	2	0
7	Lonoke (Lonoke)	839	244	29.08%	535	0	7	5	23	25
7	Prairie (DeValls Bluff)	104	22	21.15%	77	0	0	0	1	4
	<b>Area Total</b>	<b>2,369.00</b>	<b>599.00</b>	<b>25.28%</b>	<b>1,604.00</b>	<b>2.00</b>	<b>12.00</b>	<b>21.00</b>	<b>90.00</b>	<b>41.00</b>
8	Clay (Piggott & Coming)	210	54	25.71%	146	0	0	4	4	2
8	Craighead (Jonesboro)	1330	336	25.26%	920	0	3	18	32	21
8	Fulton (Salem)	143	51	35.66%	86	0	0	1	2	3
8	Greene (Paragould)	839	217	25.86%	585	0	8	11	18	0
8	Izard (Melbourne)	185	66	35.68%	114	0	0	2	1	2
8	Lawrence (Walnut Ridge)	301	89	29.57%	207	0	0	2	2	1
8	Mississippi (Blytheville)	469	159	33.90%	289	0	0	12	8	1
8	Mississippi (Osceola)	254	85	33.46%	159	0	1	4	5	0
8	Randolph (Pocahontas)	202	40	19.80%	153	0	0	1	8	0
8	Sharp (Ash Flat)	207	61	29.47%	136	0	0	2	3	5
	<b>Area Total</b>	<b>4,140.00</b>	<b>1,158.00</b>	<b>27.97%</b>	<b>2,795.00</b>	<b>0.00</b>	<b>12.00</b>	<b>57.00</b>	<b>83.00</b>	<b>35.00</b>
9	Cleburne (Heber Springs)	332	93	28.01%	230	0	0	0	5	4
9	Crittenden (West Memphis)	612	171	27.94%	405	1	0	17	18	0
9	Cross (Wynne)	241	72	29.88%	155	0	1	2	11	0
9	Independence (Batesville)	519	107	20.62%	398	0	1	8	3	2
9	Jackson (Newport)	278	66	23.74%	199	0	0	1	5	7
9	Poinsett (Harrisburg)	454	127	27.97%	316	0	1	6	4	0
9	Stone (Mountain View)	142	29	20.42%	109	0	0	1	2	1
9	White (Searcy)	841	160	19.02%	630	0	3	4	34	10
9	Woodruff (Augusta)	91	26	28.57%	58	0	1	2	4	0
	<b>Area Total</b>	<b>3,510.00</b>	<b>851.00</b>	<b>24.25%</b>	<b>2,500.00</b>	<b>1.00</b>	<b>7.00</b>	<b>41.00</b>	<b>86.00</b>	<b>24.00</b>
10	Arkansas (Dewitt)	75	22	29.33%	52	0	1	0	0	0
10	Arkansas (Stuttgart)	123	34	27.64%	86	0	2	1	0	0
10	Ashley (Hamburg)	210	51	24.29%	151	1	0	7	0	0
10	Chicot (Lake Village)	114	20	17.54%	93	0	0	1	0	0
10	Desha (McGehee)	149	38	25.50%	108	0	0	2	1	0
10	Drew (Monticello)	183	55	30.05%	127	0	1	0	0	0
10	Lee (Marianna)	73	15	20.55%	51	0	0	4	0	3
10	Monroe (Brinkley)	63	16	25.40%	42	0	0	1	2	2
10	Monroe (Clarendon)	25	4	16.00%	21	0	0	0	0	0
10	Phillips (Helena)	244	48	19.67%	166	0	4	3	13	10
10	St. Francis (Forrest City)	296	41	13.85%	237	0	0	7	4	7
	<b>Area Total</b>	<b>1,555.00</b>	<b>344.00</b>	<b>22.12%</b>	<b>1,134.00</b>	<b>1.00</b>	<b>8.00</b>	<b>26.00</b>	<b>20.00</b>	<b>22.00</b>
99	Unknown County	4	0	0.00%	3	0	0	1	0	0
	<b>Statewide Total</b>	<b>33,849.00</b>	<b>7,969.00</b>	<b>23.54%</b>	<b>23,011.00</b>	<b>15.00</b>	<b>138.00</b>	<b>451.00</b>	<b>1,187.00</b>	<b>1,078.00</b>

\* "Unsub" = Unsubstantiated; "UTL" = Unable to Locate; "UJO" = Underage Juvenile Offender; "Unknown" = Status of assessment is not identified in CHRIS.

\*\* This total includes both DCFS and CACD assessments.

**APPENDIX B: Children in Foster Care by Ethnicity**

Area	County	Total	White	Black	Asian	NAPI	AIAN	His-panic	More Than 1 Race	Unknown
1	Benton (Bentonville)	330	241	10	0	0	0	55	24	0
1	Carroll (Berryville)	71	52	0	0	0	0	13	6	0
1	Madison (Huntsville)	43	41	0	0	0	0	1	1	0
1	Washington (Fayetteville)	271	205	9	0	1	0	25	29	2
	<b>Area Total</b>	<b>715</b>	<b>539</b>	<b>19</b>	<b>0</b>	<b>1</b>	<b>0</b>	<b>94</b>	<b>60</b>	<b>2</b>
2	Crawford (Van Buren)	168	123	1	5	0	2	18	17	2
2	Franklin (Ozark)	57	53	0	0	0	0	1	3	0
2	Johnson (Clarksville)	79	60	0	0	0	0	6	13	0
2	Logan (Booneville)	29	29	0	0	0	0	0	0	0
2	Logan (Paris)	20	13	1	0	0	0	0	4	2
2	Scott (Waldron)	35	32	0	0	0	0	2	1	0
2	Sebastian (Fort Smith)	856	533	77	5	1	1	106	129	4
2	Yell (Danville)	55	48	0	0	0	1	5	1	0
	<b>Area Total</b>	<b>1,299</b>	<b>891</b>	<b>79</b>	<b>10</b>	<b>1</b>	<b>4</b>	<b>138</b>	<b>168</b>	<b>8</b>
3	Clark (Arkadelphia)	31	15	11	0	0	0	3	2	0
3	Garland (Hot Springs)	322	235	28	0	0	0	23	34	2
3	Hot Spring (Malvern)	43	30	1	0	0	0	6	5	1
3	Howard (Nashville)	28	15	9	0	0	0	2	2	0
3	Montgomery (Mount Ida)	20	14	0	0	0	0	4	1	1
3	Perry (Perryville)	23	21	0	0	0	0	1	1	0
3	Pike (Murfreesboro)	18	17	0	0	0	0	1	0	0
3	Polk (Mena)	75	70	0	0	0	0	5	0	0
3	Saline (Benton)	154	121	11	0	0	0	9	12	1
	<b>Area Total</b>	<b>714</b>	<b>538</b>	<b>60</b>	<b>0</b>	<b>0</b>	<b>0</b>	<b>54</b>	<b>57</b>	<b>5</b>
4	Columbia (Magnolia)	35	14	16	0	0	0	1	4	0
4	Hempstead (Hope)	28	7	15	0	0	0	5	1	0
4	Lafayette (Lewistown)	13	6	6	0	0	0	0	1	0
4	Little River (Ashdown)	41	26	3	0	0	0	1	10	1
4	Miller (Texarkana)	182	119	46	0	0	0	6	11	0
4	Nevada (Prescott)	29	12	14	0	0	0	0	3	0
4	Ouachita (Camden)	52	23	20	0	0	0	1	8	0
4	Sevier (DeQueen)	65	39	2	0	0	0	14	9	1
4	Union (El Dorado)	80	32	37	0	0	0	3	8	0
	<b>Area Total</b>	<b>525</b>	<b>278</b>	<b>159</b>	<b>0</b>	<b>0</b>	<b>0</b>	<b>31</b>	<b>55</b>	<b>2</b>
5	Baxter (Mountain Home)	58	53	0	0	0	0	1	4	0
5	Boone (Harrison)	124	118	1	0	1	1	2	1	0
5	Conway (Morrilton)	138	94	18	0	1	0	10	15	0
5	Faulkner (Conway)	154	115	25	0	1	0	7	6	0
5	Marion (Yellville)	54	52	0	0	0	0	1	1	0
5	Newton (Jasper)	18	18	0	0	0	0	0	0	0
5	Pope (Russellville)	134	97	8	0	0	0	20	9	0
5	Searcy (Marshall)	13	13	0	0	0	0	0	0	0
5	Van Buren (Clinton)	39	39	0	0	0	0	0	0	0
	<b>Area Total</b>	<b>732</b>	<b>599</b>	<b>52</b>	<b>0</b>	<b>3</b>	<b>1</b>	<b>41</b>	<b>36</b>	<b>0</b>
6	Pulaski	4	0	4	0	0	0	0	0	0
6	Pulaski (East)	99	15	68	0	1	0	0	15	0
6	Pulaski (Jacksonville)	142	87	35	0	0	0	4	16	0
6	Pulaski (North)	316	94	189	0	0	0	7	26	0
6	Pulaski (South)	265	52	187	0	0	0	4	22	0
6	Pulaski (Southwest)	184	56	105	0	0	0	12	11	0
	<b>Area Total</b>	<b>1,010</b>	<b>304</b>	<b>588</b>	<b>0</b>	<b>1</b>	<b>0</b>	<b>27</b>	<b>90</b>	<b>0</b>

SFY 2011 ANNUAL REPORT CARD – APPENDICES

Area	County	Total	White	Black	Asian	NAPI	AIAN	His-panic	More Than 1 Race	Unknown
7	Bradley (Warren)	23	3	11	0	0	0	8	1	0
7	Calhoun (Hampton)	3	0	3	0	0	0	0	0	0
7	Cleveland (Pison)	15	8	5	0	0	0	0	2	0
7	Dallas (Fordyce)	6	3	0	0	0	0	0	3	0
7	Grant (Sheridan)	14	14	0	0	0	0	0	0	0
7	Jefferson (Pine Bluff)	410	75	313	0	0	0	6	16	0
7	Lincoln (Star City)	47	32	7	0	0	0	3	5	0
7	Lonoke (Lonoke)	208	160	14	0	0	0	12	20	2
7	Prairie (DeValls Bluff)	27	17	8	0	0	0	0	2	0
	<b>Area Total</b>	<b>753</b>	<b>312</b>	<b>361</b>	<b>0</b>	<b>0</b>	<b>0</b>	<b>29</b>	<b>49</b>	<b>2</b>
8	Clay (Piggott & Corning)	40	36	0	0	0	0	1	3	0
8	Craighead (Jonesboro)	270	181	58	0	0	0	8	21	2
8	Fulton (Salem)	74	68	0	0	0	0	5	1	0
8	Greene (Paragould)	143	132	3	0	0	0	2	6	0
8	Izard (Melbourne)	75	66	1	0	0	0	5	3	0
8	Lawrence (Walnut Ridge)	105	93	0	0	0	0	3	9	0
8	Mississippi (Blytheville)	67	26	29	0	0	0	0	12	0
8	Mississippi (Osceola)	30	14	11	0	0	0	1	4	0
8	Randolph (Pocahontas)	69	66	0	0	0	0	1	1	1
8	Sharp (Ash Flat)	89	75	1	1	0	3	0	7	2
	<b>Area Total</b>	<b>962</b>	<b>757</b>	<b>103</b>	<b>1</b>	<b>0</b>	<b>3</b>	<b>26</b>	<b>67</b>	<b>5</b>
9	Ceburne (Heber Springs)	72	69	0	0	0	0	2	1	0
9	Crittenden (West Memphis)	134	47	65	0	0	0	7	15	0
9	Cross (Wynne)	67	25	37	0	0	0	1	4	0
9	Independence (Batesville)	160	130	2	0	0	0	16	11	1
9	Jackson (Newport)	84	56	20	0	0	0	1	7	0
9	Poinsett (Harrisburg)	81	75	3	0	0	0	0	3	0
9	Stone (Mountain View)	26	21	0	0	0	0	1	4	0
9	White (Searcy)	197	134	13	0	0	0	16	33	1
9	Woodruff (Augusta)	43	24	13	0	0	0	0	6	0
	<b>Area Total</b>	<b>864</b>	<b>581</b>	<b>153</b>	<b>0</b>	<b>0</b>	<b>0</b>	<b>44</b>	<b>84</b>	<b>2</b>
10	Arkansas (Dewitt)	17	12	5	0	0	0	0	0	0
10	Arkansas (Stuttgart)	35	18	16	0	0	0	0	1	0
10	Ashley (Hamburg)	40	15	22	0	0	0	0	3	0
10	Chicot (Lake Village)	27	2	22	0	0	0	0	3	0
10	Desha (McGehee)	36	3	23	0	0	0	3	7	0
10	Drew (Monticello)	49	18	23	0	0	0	6	2	0
10	Lee (Marianna)	25	7	18	0	0	0	0	0	0
10	Monroe (Brinkley)	11	4	7	0	0	0	0	0	0
10	Monroe (Clarendon)	6	2	4	0	0	0	0	0	0
10	Phillips (Helena)	55	8	39	0	0	0	2	6	0
10	St. Francis (Forrest City)	84	14	61	0	0	0	7	2	0
	<b>Area Total</b>	<b>385</b>	<b>103</b>	<b>240</b>	<b>0</b>	<b>0</b>	<b>0</b>	<b>18</b>	<b>24</b>	<b>0</b>
	<b>Statewide Total</b>	<b>7,959</b>	<b>4,902</b>	<b>1,814</b>	<b>11</b>	<b>6</b>	<b>8</b>	<b>502</b>	<b>690</b>	<b>26</b>

**APPENDIX C: Children in Foster Care by Age**

Area	County	Total	0-5 years	6-11 years	12-14 years	15+ years	Unknown
1	Benton (Bentonville)	330	131	75	38	86	0
1	Carroll (Berryville)	71	38	20	4	9	0
1	Madison (Huntsville)	43	19	9	5	10	0
1	Washington (Fayetteville)	271	113	68	31	59	0
	<b>Area Total</b>	<b>715</b>	<b>301</b>	<b>172</b>	<b>78</b>	<b>164</b>	<b>0</b>
2	Crawford (Van Buren)	168	73	57	16	22	0
2	Franklin (Ozark)	57	22	17	5	13	0
2	Johnson (Clarksville)	79	38	27	8	6	0
2	Logan (Booneville)	29	17	7	2	3	0
2	Logan (Paris)	20	12	4	1	3	0
2	Scott (Waldron)	35	15	12	4	4	0
2	Sebastian (Fort Smith)	856	335	233	112	176	0
2	Yell (Danville)	55	25	12	8	10	0
	<b>Area Total</b>	<b>1,299</b>	<b>537</b>	<b>369</b>	<b>156</b>	<b>237</b>	<b>0</b>
3	Clark (Arkadelphia)	31	11	7	7	6	0
3	Garland (Hot Springs)	322	125	93	39	65	0
3	Hot Spring (Malvern)	43	19	12	3	9	0
3	Howard (Nashville)	28	11	8	1	8	0
3	Montgomery (Mount Ida)	20	10	1	3	6	0
3	Perry (Perryville)	23	4	9	6	4	0
3	Pike (Murfreesboro)	18	7	6	2	3	0
3	Polk (Mena)	75	24	16	11	24	0
3	Saline (Benton)	154	71	43	11	29	0
	<b>Area Total</b>	<b>714</b>	<b>282</b>	<b>195</b>	<b>83</b>	<b>154</b>	<b>0</b>
4	Columbia (Magnolia)	35	21	10	2	2	0
4	Hempstead (Hope)	28	9	8	6	5	0
4	Lafayette (Lewistown)	13	6	2	3	2	0
4	Little River (Ashdown)	41	16	9	8	8	0
4	Miller (Texarkana)	182	70	51	21	40	0
4	Nevada (Prescott)	29	13	13	1	2	0
4	Ouachita (Camden)	52	21	12	6	13	0
4	Sevier (DeQueen)	65	41	10	5	9	0
4	Union (El Dorado)	80	24	26	7	23	0
	<b>Area Total</b>	<b>525</b>	<b>221</b>	<b>141</b>	<b>59</b>	<b>104</b>	<b>0</b>
5	Baxter (Mountain Home)	58	27	18	4	9	0
5	Boone (Harrison)	124	51	27	10	36	0
5	Conway (Morrilton)	138	58	34	16	30	0
5	Faulkner (Conway)	154	81	28	20	25	0
5	Marion (Yellville)	54	19	14	8	13	0
5	Newton (Jasper)	18	5	6	1	6	0
5	Pope (Russellville)	134	64	40	14	16	0
5	Searcy (Marshall)	13	2	2	2	7	0
5	Van Buren (Clinton)	39	10	7	8	14	0
	<b>Area Total</b>	<b>732</b>	<b>317</b>	<b>176</b>	<b>83</b>	<b>156</b>	<b>0</b>
6	Pulaski	4	4	0	0	0	0
6	Pulaski (East)	99	43	25	8	23	0
6	Pulaski (Jacksonville)	142	65	35	14	28	0
6	Pulaski (North)	316	136	77	40	63	0
6	Pulaski (South)	265	99	86	31	49	0
6	Pulaski (Southwest)	184	66	61	22	35	0
	<b>Area Total</b>	<b>1,010</b>	<b>413</b>	<b>284</b>	<b>115</b>	<b>198</b>	<b>0</b>

SFY 2011 ANNUAL REPORT CARD – APPENDICES

Area	County	Total	0-5 years	6-11 years	12-14 years	15+ years	Unknown
7	Bradley (Warren)	23	8	5	1	9	0
7	Calhoun (Hampton)	3	2	0	0	1	0
7	Cleveland (Rison)	15	4	3	4	4	0
7	Dallas (Fordyce)	6	2	0	3	1	0
7	Grant (Sheridan)	14	7	2	4	1	0
7	Jefferson (Pine Bluff)	410	186	96	35	93	0
7	Lincoln (Star City)	47	24	10	3	10	0
7	Lonoke (Lonoke)	208	106	54	17	31	0
7	Prairie (DeValls Bluff)	27	15	8	2	2	0
	<b>Area Total</b>	<b>753</b>	<b>354</b>	<b>178</b>	<b>69</b>	<b>152</b>	<b>0</b>
8	Clay (Piggott & Corning)	40	21	8	0	11	0
8	Craighead (Jonesboro)	270	127	77	16	50	0
8	Fulton (Salem)	74	34	18	10	12	0
8	Greene (Paragould)	143	63	44	12	24	0
8	Izard (Melbourne)	75	24	29	6	16	0
8	Lawrence (Walnut Ridge)	105	44	31	9	21	0
8	Mississippi (Blytheville)	67	26	14	8	19	0
8	Mississippi (Osceola)	30	15	12	0	3	0
8	Randolph (Pocahontas)	69	14	24	13	18	0
8	Sharp (Ash Flat)	89	40	14	12	23	0
	<b>Area Total</b>	<b>962</b>	<b>408</b>	<b>271</b>	<b>86</b>	<b>197</b>	<b>0</b>
9	Cleburne (Heber Springs)	72	26	19	10	17	0
9	Crittenden (West Memphis)	134	70	38	7	19	0
9	Cross (Wynne)	67	33	14	9	11	0
9	Independence (Batesville)	160	88	43	14	15	0
9	Jackson (Newport)	84	44	18	7	15	0
9	Poinsett (Harrisburg)	81	44	16	8	13	0
9	Stone (Mountain View)	26	10	10	2	4	0
9	White (Searcy)	197	99	51	19	28	0
9	Woodruff (Augusta)	43	20	12	3	8	0
	<b>Area Total</b>	<b>864</b>	<b>434</b>	<b>221</b>	<b>79</b>	<b>130</b>	<b>0</b>
10	Arkansas (Dewitt)	17	8	2	3	4	0
10	Arkansas (Stuttgart)	35	17	5	1	12	0
10	Ashley (Hamburg)	40	15	11	6	8	0
10	Chicot (Lake Village)	27	12	0	3	12	0
10	Desha (McGehee)	36	12	15	2	7	0
10	Drew (Monticello)	49	16	5	9	19	0
10	Lee (Marianna)	25	13	4	1	7	0
10	Monroe (Brinkley)	11	5	1	3	2	0
10	Monroe (Clarendon)	6	4	2	0	0	0
10	Phillips (Helena)	55	17	12	10	16	0
10	St. Francis (Forrest City)	84	36	20	8	20	0
	<b>Area Total</b>	<b>385</b>	<b>155</b>	<b>77</b>	<b>46</b>	<b>107</b>	<b>0</b>
	<b>Statewide Total</b>	<b>7,959</b>	<b>3,422</b>	<b>2,084</b>	<b>854</b>	<b>1,599</b>	<b>0</b>

**APPENDIX D: Children in Foster Care by Gender**

Area	County	Total	Male	Female
1	Benton (Bentonville)	330	166	164
1	Carroll (Berryville)	71	36	35
1	Madison (Huntsville)	43	22	21
1	Washington (Fayetteville)	271	128	143
	<b>Area Total</b>	<b>715</b>	<b>352</b>	<b>363</b>
2	Crawford (Van Buren)	168	82	86
2	Franklin (Ozark)	57	28	29
2	Johnson (Clarksville)	79	35	44
2	Logan (Booneville)	29	15	14
2	Logan (Paris)	20	6	14
2	Scott (Waldron)	35	17	18
2	Sebastian (Fort Smith)	856	428	428
2	Yell (Danville)	55	27	28
	<b>Area Total</b>	<b>1,299</b>	<b>638</b>	<b>661</b>
3	Clark (Arkadelphia)	31	19	12
3	Garland (Hot Springs)	322	167	155
3	Hot Spring (Malvern)	43	19	24
3	Howard (Nashville)	28	12	16
3	Montgomery (Mount Ida)	20	11	9
3	Perry (Perryville)	23	13	10
3	Pike (Murfreesboro)	18	11	7
3	Polk (Mena)	75	31	44
3	Saline (Benton)	154	82	72
	<b>Area Total</b>	<b>714</b>	<b>365</b>	<b>349</b>
4	Columbia (Magnolia)	35	20	15
4	Hempstead (Hope)	28	18	10
4	Lafayette (LeW erville)	13	7	6
4	Little River (Ashdown)	41	18	23
4	Miller (Texarkana)	182	102	80
4	Nevada (Prescott)	29	17	12
4	Quachita (Camden)	52	31	21
4	Sevier (DeQueen)	65	32	33
4	Union (El Dorado)	80	51	29
	<b>Area Total</b>	<b>525</b>	<b>296</b>	<b>229</b>
5	Baxter (Mountain Home)	58	34	24
5	Boone (Harrison)	124	66	58
5	Conway (Morrilton)	138	69	69
5	Faulkner (Conway)	154	82	72
5	Marion (Yellville)	54	24	30
5	Newton (Jasper)	18	8	10
5	Pope (Russellville)	134	71	63
5	Searcy (Marshall)	13	6	7
5	Van Buren (Clinton)	39	19	20
	<b>Area Total</b>	<b>732</b>	<b>379</b>	<b>353</b>
6	Pulaski	4	2	2
6	Pulaski (East)	99	57	42
6	Pulaski (Jacksonville)	142	71	71
6	Pulaski (North)	316	161	155
6	Pulaski (South)	265	134	131
6	Pulaski (Southwest)	184	109	75
	<b>Area Total</b>	<b>1,010</b>	<b>534</b>	<b>476</b>

SFY 2011 ANNUAL REPORT CARD – APPENDICES

Area	County	Total	Male	Female
7	Bradley (Warren)	23	14	9
7	Calhoun (Hampton)	3	2	1
7	Cleveland (Rison)	15	6	9
7	Dallas (Fordyce)	6	4	2
7	Grant (Sheridan)	14	5	9
7	Jefferson (Fine Bluff)	410	216	194
7	Lincoln (Star City)	47	24	23
7	Lonoke (Lonoke)	208	90	118
7	Prairie (DeValls Bluff)	27	13	14
	<b>Area Total</b>	<b>753</b>	<b>374</b>	<b>379</b>
8	Clay (Figgott & Corning)	40	17	23
8	Craighead (Jonesboro)	270	130	140
8	Fulton (Salem)	74	43	31
8	Greene (Paragould)	143	73	70
8	Izard (Melbourne)	75	39	36
8	Lawrence (Walnut Ridge)	105	41	64
8	Mississippi (Blytheville)	67	30	37
8	Mississippi (Osceola)	30	17	13
8	Randolph (Pocahontas)	69	40	29
8	Sharp (Ash Flat)	89	39	50
	<b>Area Total</b>	<b>962</b>	<b>469</b>	<b>493</b>
9	Cleburne (Heber Springs)	72	39	33
9	Crittenden (West Memphis)	134	61	73
9	Cross (Wynne)	67	31	36
9	Independence (Batesville)	160	79	81
9	Jackson (Newport)	84	41	43
9	Poinsett (Harrisburg)	81	41	40
9	Stone (Mountain View)	26	15	11
9	White (Searcy)	197	99	98
9	Woodruff (Augusta)	43	23	20
	<b>Area Total</b>	<b>864</b>	<b>429</b>	<b>435</b>
10	Arkansas (Dewitt)	17	9	8
10	Arkansas (Stuttgart)	35	16	19
10	Ashley (Hamburg)	40	25	15
10	Chicot (Lake Village)	27	13	14
10	Desha (McGehee)	36	20	16
10	Drew (Monticello)	49	24	25
10	Lee (Marianna)	25	13	12
10	Monroe (Brinkley)	11	2	9
10	Monroe (Clarendon)	6	3	3
10	Phillips (Helena)	55	32	23
10	St. Francis (Forrest City)	84	39	45
	<b>Area Total</b>	<b>385</b>	<b>196</b>	<b>189</b>
	<b>Statewide Total</b>	<b>7,959</b>	<b>4,032</b>	<b>3,927</b>



**APPENDIX E: Children in Foster Care by Lengths of Stay**

Area	County	Total	Less than 30 Days	30 to 90 Days	3 to 6 Months	7 to 12 Months	12 to 24 Months	24 to 36 Months	Over 36 Months
1	Benton (Bentonville)	330	48	40	42	86	69	19	26
1	Carroll (Berryville)	71	14	3	11	16	13	9	5
1	Madison (Huntsville)	43	5	3	8	11	8	4	4
1	Washington (Fayetteville)	271	68	45	33	56	35	13	21
	<b>Area Total</b>	<b>715</b>	<b>135</b>	<b>91</b>	<b>94</b>	<b>169</b>	<b>125</b>	<b>45</b>	<b>56</b>
2	Crawford (Van Buren)	168	40	25	18	39	19	10	17
2	Franklin (Ozark)	57	11	12	10	8	10	2	4
2	Johnson (Clarksville)	79	8	16	13	24	15	2	1
2	Logan (Booneville)	29	5	7	6	6	3	0	2
2	Logan (Paris)	20	3	2	4	9	1	1	0
2	Scott (Waldron)	35	11	0	9	5	10	0	0
2	Sebastian (Fort Smith)	856	47	95	119	154	210	103	128
2	Yell (Danville)	55	6	7	5	11	9	9	8
	<b>Area Total</b>	<b>1,299</b>	<b>131</b>	<b>164</b>	<b>184</b>	<b>256</b>	<b>277</b>	<b>127</b>	<b>160</b>
3	Clark (Arkadelphia)	31	9	10	0	2	0	6	4
3	Garland (Hot Springs)	322	64	60	45	54	48	14	37
3	Hot Spring (Malvern)	43	10	0	8	16	7	1	1
3	Howard (Nashville)	28	6	3	6	3	2	1	7
3	Montgomery (Mount Ida)	20	7	0	4	6	1	0	2
3	Perry (Perryville)	23	6	1	0	3	4	7	2
3	Pike (Murfreesboro)	18	5	0	0	1	9	3	0
3	Polk (Mena)	75	12	6	17	14	8	2	16
3	Saline (Benton)	154	31	15	11	32	39	18	8
	<b>Area Total</b>	<b>714</b>	<b>150</b>	<b>95</b>	<b>91</b>	<b>131</b>	<b>118</b>	<b>52</b>	<b>77</b>
4	Columbia (Magnolia)	35	22	6	2	3	1	1	0
4	Hempstead (Hope)	28	7	9	1	2	3	0	6
4	Lafayette (Le wisville)	13	3	4	3	1	1	0	1
4	Little River (Ashdown)	41	14	8	3	2	7	1	6
4	Miller (Texarkana)	182	17	21	10	29	52	36	17
4	Nevada (Prescott)	29	10	4	7	4	1	3	0
4	Ouachita (Camden)	52	16	4	11	10	3	1	7
4	Sevier (DeQueen)	65	17	10	4	11	15	5	3
4	Union (El Dorado)	80	23	12	11	13	9	3	9
	<b>Area Total</b>	<b>525</b>	<b>129</b>	<b>78</b>	<b>52</b>	<b>75</b>	<b>92</b>	<b>50</b>	<b>49</b>
5	Baxter (Mountain Home)	58	5	9	4	16	8	6	10
5	Boone (Harrison)	124	18	10	21	21	42	7	5
5	Conway (Morrilton)	138	17	23	12	26	32	17	11
5	Faulkner (Conway)	154	30	33	15	26	30	8	12
5	Marion (Yellville)	54	3	5	5	4	18	6	13
5	Newton (Jasper)	18	2	1	2	4	9	0	0
5	Pope (Russellville)	134	5	25	29	31	18	14	12
5	Searcy (Marshall)	13	1	0	0	1	6	0	5
5	Van Buren (Clinton)	39	8	1	8	3	4	1	14
	<b>Area Total</b>	<b>732</b>	<b>89</b>	<b>107</b>	<b>96</b>	<b>132</b>	<b>167</b>	<b>59</b>	<b>82</b>
6	Pulaski	4	0	0	1	1	2	0	0
6	Pulaski (East)	99	18	2	6	23	20	8	22
6	Pulaski (Jacksonville)	142	10	21	16	31	42	7	15
6	Pulaski (North)	316	37	33	25	55	59	57	50
6	Pulaski (South)	265	13	24	21	40	60	30	77
6	Pulaski (Southwest)	184	13	36	9	45	38	27	16
	<b>Area Total</b>	<b>1,010</b>	<b>91</b>	<b>116</b>	<b>78</b>	<b>195</b>	<b>221</b>	<b>129</b>	<b>180</b>

SFY 2011 ANNUAL REPORT CARD – APPENDICES

Area	County	Total	Less than 30 Days	30 to 90 Days	3 to 6 Months	7 to 12 Months	12 to 24 Months	24 to 36 Months	Over 36 Months
7	Bradley (Warren)	23	2	4	2	2	3	2	8
7	Calhoun (Hampton)	3	1	1	0	0	0	0	1
7	Cleveland (Rison)	15	8	5	1	1	0	0	0
7	Dallas (Fordyce)	6	1	5	0	0	0	0	0
7	Grant (Sheridan)	14	5	3	2	0	3	1	0
7	Jefferson (Pine Bluff)	410	97	65	73	63	60	19	33
7	Lincoln (Star City)	47	5	12	4	19	5	1	1
7	Lonoke (Lonoke)	208	34	35	30	41	50	11	7
7	Prairie (DeValls Bluff)	27	9	2	8	3	3	0	2
	<b>Area Total</b>	<b>753</b>	<b>162</b>	<b>132</b>	<b>120</b>	<b>129</b>	<b>124</b>	<b>34</b>	<b>52</b>
8	Clay (Figgott & Corning)	40	6	10	5	9	4	2	4
8	Craighead (Jonesboro)	270	31	36	21	60	60	39	23
8	Fulton (Salem)	74	12	5	4	14	22	9	8
8	Greene (Paragould)	143	9	22	30	37	24	11	10
8	Izard (Melbourne)	75	10	8	16	12	15	0	14
8	Lawrence (Walnut Ridge)	105	10	24	7	29	15	7	13
8	Mississippi (Blytheville)	67	11	9	9	9	18	6	5
8	Mississippi (Osceola)	30	8	7	0	3	7	1	4
8	Randolph (Pocahontas)	69	5	5	7	12	28	4	8
8	Sharp (Ash Flat)	89	7	10	15	21	22	7	7
	<b>Area Total</b>	<b>962</b>	<b>109</b>	<b>136</b>	<b>114</b>	<b>206</b>	<b>215</b>	<b>86</b>	<b>96</b>
9	Cleburne (Heber Springs)	72	6	16	9	15	7	7	12
9	Crittenden (West Memphis)	134	39	7	26	17	16	11	18
9	Cross (Wynne)	67	7	6	13	27	11	2	1
9	Independence (Batesville)	160	19	22	39	27	28	14	11
9	Jackson (Newport)	84	8	13	16	29	8	7	3
9	Poinsett (Harrisburg)	81	5	9	17	20	27	1	2
9	Stone (Mountain View)	26	0	6	10	6	2	0	2
9	White (Searcy)	197	65	27	10	28	52	9	6
9	Woodruff (Augusta)	43	7	14	2	6	7	3	4
	<b>Area Total</b>	<b>864</b>	<b>156</b>	<b>120</b>	<b>142</b>	<b>175</b>	<b>158</b>	<b>54</b>	<b>59</b>
10	Arkansas (Dewitt)	17	1	1	2	4	4	3	2
10	Arkansas (Stuttgart)	35	9	5	5	6	4	0	6
10	Ashley (Hamburg)	40	12	12	4	7	0	2	3
10	Chicot (Lake Village)	27	4	2	1	3	4	7	6
10	Desha (McGehee)	36	10	7	4	4	7	2	2
10	Drew (Monticello)	49	5	7	5	6	8	1	17
10	Lee (Marianna)	25	1	11	6	2	1	3	1
10	Monroe (Brinkley)	11	1	3	0	0	6	1	0
10	Monroe (Clarendon)	6	2	0	2	0	2	0	0
10	Phillips (Helena)	55	4	7	6	8	10	7	13
10	St. Francis (Forrest City)	84	14	5	10	17	17	14	7
	<b>Area Total</b>	<b>385</b>	<b>63</b>	<b>60</b>	<b>45</b>	<b>57</b>	<b>63</b>	<b>40</b>	<b>57</b>
	<b>Statewide Total</b>	<b>7,959</b>	<b>1,215</b>	<b>1,099</b>	<b>1,016</b>	<b>1,525</b>	<b>1,560</b>	<b>676</b>	<b>868</b>

**APPENDIX F: Services Provided during the Year**

Area	County	FC Cases	PS Cases	PS Children	SS Cases	SS Children	Total
1	Benton (Bentonville)	330	594	1,379	8	16	932
1	Carroll (Berryville)	71	67	149	1	1	139
1	Madison (Huntsville)	43	76	191	4	8	123
1	Washington (Fayetteville)	271	582	1,379	11	35	864
	<b>Area Total</b>	<b>715</b>	<b>1,319</b>	<b>3,098</b>	<b>24</b>	<b>60</b>	<b>2,058</b>
2	Crawford (Van Buren)	168	324	772	36	92	528
2	Franklin (Ozark)	57	104	238	1	1	162
2	Johnson (Clarksville)	79	137	316	2	6	218
2	Logan (Booneville)	29	63	136	1	3	93
2	Logan (Paris)	20	50	108	0	0	70
2	Scott (Waldron)	35	73	173	11	25	119
2	Sebastian (Fort Smith)	856	977	2,306	26	86	1,859
2	Yell (Danville)	55	105	239	1	5	161
	<b>Area Total</b>	<b>1,299</b>	<b>1,833</b>	<b>4,288</b>	<b>78</b>	<b>218</b>	<b>3,210</b>
3	Clark (Arkadelphia)	31	51	115	9	20	91
3	Garland (Hot Springs)	322	383	802	39	92	744
3	Hot Spring (Malvern)	43	115	254	13	28	171
3	Howard (Nashville)	28	45	108	14	45	87
3	Montgomery (Mount Ida)	20	19	46	12	33	51
3	Perry (Perryville)	23	33	81	1	2	57
3	Pike (Murfreesboro)	18	13	31	6	15	37
3	Polk (Mena)	75	115	261	16	40	206
3	Saline (Benton)	154	289	658	27	68	470
	<b>Area Total</b>	<b>714</b>	<b>1,063</b>	<b>2,356</b>	<b>137</b>	<b>343</b>	<b>1,914</b>
4	Columbia (Magnolia)	35	86	188	13	29	134
4	Hempstead (Hope)	28	97	235	8	21	133
4	Lafayette (LeWesville)	13	35	89	5	12	53
4	Little River (Ashdown)	41	68	151	2	2	111
4	Miller (Texarkana)	182	234	495	12	35	428
4	Nevada (Prescott)	29	60	165	3	7	92
4	Ouachita (Camden)	52	132	317	9	13	193
4	Sevier (DeQueen)	65	85	199	2	4	152
4	Union (El Dorado)	80	186	458	10	27	276
	<b>Area Total</b>	<b>525</b>	<b>983</b>	<b>2,297</b>	<b>64</b>	<b>150</b>	<b>1,572</b>
5	Baxter (Mountain Home)	58	117	251	16	43	191
5	Boone (Harrison)	124	183	400	13	32	320
5	Conway (Morriton)	138	181	454	20	47	339
5	Faulkner (Conway)	154	366	860	15	42	535
5	Marion (Yellville)	54	70	154	6	9	130
5	Newton (Jasper)	18	23	59	3	8	44
5	Pope (Russellville)	134	271	618	29	74	434
5	Searcy (Marshall)	13	30	51	1	2	44
5	Van Buren (Clinton)	39	84	181	10	26	133
	<b>Area Total</b>	<b>732</b>	<b>1,325</b>	<b>3,028</b>	<b>113</b>	<b>283</b>	<b>2,170</b>
6	Pulaski	4	14	41	2	9	20
6	Pulaski (East)	99	112	251	21	37	232
6	Pulaski (Jacksonville)	142	241	541	43	97	426
6	Pulaski (North)	316	356	882	36	88	708
6	Pulaski (South)	265	277	680	41	113	583
6	Pulaski (Southwest)	184	291	831	28	60	503
	<b>Area Total</b>	<b>1,010</b>	<b>1,291</b>	<b>3,226</b>	<b>171</b>	<b>404</b>	<b>2,472</b>

SFY 2011 ANNUAL REPORT CARD – APPENDICES

Area	County	FC Cases	PS Cases	PS Children	SS Cases	SS Children	Total
7	Bradley (Warren)	23	28	62	3	5	54
7	Calhoun (Hampton)	3	5	15	2	9	10
7	Cleveland (Rison)	15	22	46	2	3	39
7	Dallas (Fordyce)	6	16	30	6	15	28
7	Grant (Sheridan)	14	30	73	20	45	64
7	Jefferson (Pine Bluff)	410	383	1,058	107	227	900
7	Lincoln (Star City)	47	36	73	9	16	92
7	Lonoke (Lonoke)	208	341	827	8	15	557
7	Prairie (DeValls Bluff)	27	33	79	3	5	63
	<b>Area Total</b>	<b>753</b>	<b>894</b>	<b>2,263</b>	<b>160</b>	<b>340</b>	<b>1,807</b>
8	Clay (Piggott & Corning)	40	69	174	12	23	121
8	Craighead (Jonesboro)	270	519	1,288	8	14	797
8	Fulton (Salem)	74	95	208	9	20	178
8	Greene (Paragould)	143	301	717	10	22	454
8	Izard (Melbourne)	75	93	210	10	16	178
8	Lawrence (Walnut Ridge)	105	116	252	0	0	221
8	Mississippi (Blytheville)	67	204	527	3	7	274
8	Mississippi (Osceola)	30	97	292	1	2	128
8	Randolph (Pocahontas)	69	95	222	3	5	167
8	Sharp (Ash Flat)	89	114	264	4	14	207
	<b>Area Total</b>	<b>962</b>	<b>1,703</b>	<b>4,154</b>	<b>60</b>	<b>123</b>	<b>2,725</b>
9	Cleburne (Heber Springs)	72	123	258	7	8	202
9	Crittenden (West Memphis)	134	258	790	30	90	422
9	Cross (Wynne)	67	124	289	1	1	192
9	Independence (Batesville)	160	248	548	4	7	412
9	Jackson (Newport)	84	114	251	7	22	205
9	Poinsett (Harrisburg)	81	193	438	1	4	275
9	Stone (Mountain View)	26	43	99	0	0	69
9	White (Searcy)	197	266	585	5	7	468
9	Woodruff (Augusta)	43	56	129	0	0	99
	<b>Area Total</b>	<b>864</b>	<b>1,425</b>	<b>3,387</b>	<b>55</b>	<b>139</b>	<b>2,344</b>
10	Arkansas (Dewitt)	17	35	67	1	1	53
10	Arkansas (Stuttgart)	35	52	102	1	3	88
10	Ashley (Hamburg)	40	74	157	21	42	135
10	Chicot (Lake Village)	27	41	100	13	33	81
10	Desha (McGehee)	36	42	97	34	81	112
10	Drew (Monticello)	49	93	229	23	52	165
10	Lee (Marianna)	25	35	70	4	8	64
10	Monroe (Brinkley)	11	23	57	13	35	47
10	Monroe (Clarendon)	6	12	36	1	2	19
10	Phillips (Helena)	55	94	266	10	22	159
10	St. Francis (Forrest City)	84	142	380	40	112	266
	<b>Area Total</b>	<b>385</b>	<b>643</b>	<b>1,561</b>	<b>161</b>	<b>391</b>	<b>1,189</b>
	<b>Statewide Total</b>	<b>7,959</b>	<b>12,479</b>	<b>29,658</b>	<b>1,023</b>	<b>2,451</b>	<b>21,461</b>

**Appendix G: True Fatality**

Child	County	Age	Race	Gender	Date of Death	Allegations or Preliminary Cause of Death	Placement at the Time of Incident	Relationship of Alleged Offender to the Child	Agency Conducting the Investigation	Legal Action By the Department	Services Provided Prior to the Incident	Services Provided After the Incident
Dominick Doss	Washington	2	Multi-Ethnic	Male	07/18/2010	Physical Abuse	In-Home	Family Member	CACD	None	Prior Investigation	FC Case
Glen Hunter	Pulaski	2	White	Male	08/06/2010	Physical Abuse	In-Home	Family Member	CACD	None	None	None
Madison Martin	Lonoke	3	White	Female	08/11/2010	Inadequate Supervision	In-Home	Family Member	CACD	None	None	FC Case
Demarrius Thomas	Jackson	2	Black	Male	08/28/2010	Physical Abuse	In-Home	Family Member	CACD	None	None	None
Carsyn Reaves	Benton	1	Black	Female	08/14/2010	Inadequate Supervision	In-Home	Family Member	CACD	None	None	None
Lane Drake	Benton	<1	White	Male	08/31/2010	Inadequate Supervision/ Physical Abuse	In-Home	Family Member	CACD	None	Prior Investigation	FC Case
Savannah Houser	Crawford	3	White	Female	09/12/2010	Inadequate Supervision	In-Home	Child's Guardians	CACD	None	Prior Investigation/ Prior PS Case	FC Case
Carter Shaw	Pope	<1	White	Male	07/25/2010	Physical Abuse	In-Home	Mother's Boyfriend	CACD	None	None	None

SFY 2011 ANNUAL REPORT CARD – APPENDICES

Child	County	Age	Race	Gender	Date of Death	Allegations or Preliminary Cause of Death	Placement at the Time of Incident	Relationship of Alleged Offender to the Child	Agency Conducting the Investigation	Legal Action By the Department	Services Provided Prior to the Incident	Services Provided After the Incident
Johanna Thompson	Garland	<1	White	Female	09/15/2010	Physical Abuse/ Suffocation	In-Home	Family Member	CACD	None	None	PS Case
Ivan Scott	Cross	<1	Black	Male	10/02/2010	Inadequate Supervision/ Inadequate Food	In-Home	Family Member	CACD	None	Prior Investigation	FC Case
Bobby Larkin	Prairie	<1	Black	Male	10/02/2010	Inadequate Supervision	In-Home	Family Member	CACD	None	Prior Investigation/ PS Case	FC Case
Joshua Goff	White	1<	White	Male	1/1/2011	Physical Abuse	In Home	Family Member	CACD	None	None	None
Anna Hobbs	Lonoke	1<	Multi-Ethnic	Female	1/1/2011	Inadequate Supervision	In Home	Family Member	CACD	72-Hour Hold	Prior PS Case	FC Case
Demere Barton	Pulaski	8	Black	Male	1/29/2011	Inadequate Supervision	In Home	Family Member	CACD	None	None	FC Case
Ridley Bostian	Drew	1<	White	Male	2/16/2011	Physical Abuse	In Home	Family Member	CACD	None	None	PS Case
Amoni Carter	Desha	1	Black	Female	4/17/2011	Physical Abuse	In-Home	Family Member	CACD	None	None	None
Liam Beaustring	Baxter	1<	White	Male	4/20/2011	Neglect	In-Home	Family Member	CACD	None	None	None
Claudia Gregory	Garland	1<	White	Female	5/18/2011	Physical Abuse	In-Home	Unknown	CACD	None	None	FC Case

SFY 2011 ANNUAL REPORT CARD – APPENDICES

<b>Dakota Saylor</b>	Conway	1	White	Male	6/17/2011	Inadequate Supervision	In-Home	Family Member	CACD	None	None	None
<b>Brayson James</b>	Benton	<1	White	Male	09/17/2010	Physical Abuse	In-Home	Family Member	CACD	None	Prior Investigation/ Prior PS Case	None
<b>Addyson Villani</b>	Sebastian	<1	White	Female	11/3/2010	Threat of Harm	In-Home	Unknown	CACD	None	Prior Investigation	FC Case
<b>Kason Smith</b>	Sevier	<1	White	Male	12/30/2010	Physical Abuse	In Home	Unknown	CACD	None	Prior FC Case	FC Case

**Unsubstantiated Fatality Reports**

Child	County	Age	Race	Gender	Date of Death	Allegations or Preliminary Cause of Death	Placement at the Time of Incident	Relationship of Alleged Offender to the Child	Agency Conducting the Investigation	Legal Action By the Department	Services Provided Prior to the Incident	Services Provided After the Incident
Nicholas Sanders	Pope	<1	White	Male	09/18/2010	Inadequate Supervision	In-Home	Unknown	CACD	None	Prior Investigatio/ Prior PS Case	FC Case
Justin Weddenford	Sebastian	<1	White	Male	08/03/2010	Inadequate Supervision	In-Home	Family Member	CACD	None	None	None
Brenden Poe	Benton	5	White	Male	2/14/2011	Inadequate Supervision	In Home	Family Member	CACD	None	None	None
Jasiaha Bizzell	Pulaski	<1	Black	Female	12/16/2010	Medical Neglect	In-Home	Family Member	CACD	None	Prior Investigatio/ PS Case	FC Case
Brennon A. Morley	Fulton	3	White	Male	2/26/2011	Physical Abuse	In Home	Family Member	CACD	None	None	None

**Pending Fatality Reports**

Child	County	Age	Race	Gender	Date of Death	Allegations or Preliminary Cause of Death	Placement at the Time of Incident	Relationship of Alleged Offender to the Child	Agency Conducting the Investigation	Legal Action By the Department	Services Provided Prior to the Incident	Services Provided After the Incident
Caiden Tharp	Izard	1	White	Male	6/3/2011	Physical Abuse	In-Home	Unknown	CACD	Children Removed	Prior Investigation	FC Case



SFY 2011 ANNUAL REPORT CARD – APPENDICES

Logan Swearingen	Washington	1 <	White	Male	6/8/2011	Physical Abuse	In-Home	Unknown	CACD	None	Prior Investigation	None
------------------	------------	-----	-------	------	----------	----------------	---------	---------	------	------	---------------------	------

**Appendix H: Near Fatality**

**True Near Fatality Reports**

Child	County	Age	Race	Gender	Date of Near Fatality	Allegations or Preliminary Cause of Near Fatality	Placement at the Time of Incident	Relationship of Alleged Offender to the Child	Agency Conducting the Investigation	Legal Action By the Department	Services Provided Prior to the Incident	Services Provided After the Incident
Child #1	Craighead	1<	Multi-Ethnic	Female	1/22/2011	Inadequate Supervision/Physical Abuse	In Home	Unknown	CACD	72-Hour Hold	None	Current FC Case
Child #2	Benton	1	White	Female	2/3/2011	Inadequate Supervision/Physical Abuse	In Home	Family Member	DCFS	None	None	FC Case
Child #3	Sebastian	2	Black	Female	5/13/2011	Physical Abuse	In-Home	Out of Home Offender	CACD	Safety Plan	None	None
Child #4	Desha	1<	Black	Female	6/10/2011	Physical Abuse	In-Home	Unknown	CACD	Children Removed	None	Current FC Case

**Unsubstantiated Near Fatality Reports**

Child	County	Age	Race	Gender	Date of Near Fatality	Allegations or Preliminary Cause of Near Fatality	Placement at the Time of Incident	Relationship of Alleged Offender to the Child	Agency Conducting the Investigation	Legal Action By the Department	Services Provided Prior to the Incident	Services Provided After the Incident
Child #1	Craighead	4	White	Male	3/13/2011	Inadequate Supervision	In Home	Family Member	DCFS	None	Prior Investigation/Prior PS Case	None
Child #2	Sebastian	2	White	Male	5/29/2011	Inadequate Supervision	In-Home	Family Member	DCFS	None	None	None

**Pending Near Fatality Reports**

There were no pending near fatality reports during SFY 2011.

***Appendix I: Fatalities of Children in Foster Care Who Did Not Receive a Maltreatment Investigation***

There were no foster child fatalities which did not receive a maltreatment investigation during SFY 2011.

**Appendix J: Foster Care Maltreatment Reports**

**Foster Care Maltreatment Reports**

**Characteristics of Children in Foster Care Involved in Allegations of Maltreatment SFY 2011**

Five hundred and fifty six reports of alleged maltreatment, involving 575 children in foster care<sup>17</sup>, were received by the hotline during SYF 2011.

In one hundred and fifty nine reports, involving 225 children, foster parents were identified as the alleged offenders. As displayed by the following chart, only 18 of these reports were found to be true. Sixteen of the homes were subsequently close, one was made unavailable and one remained open due to a court order.

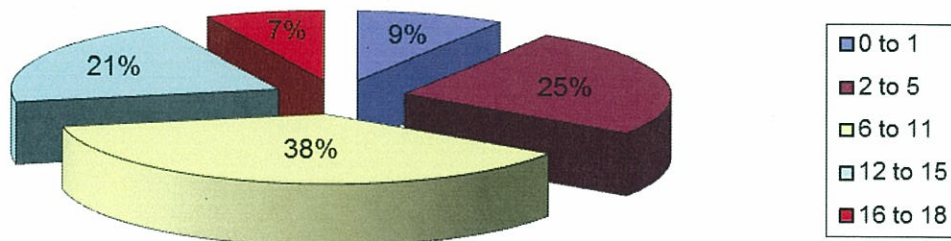
**Foster Home Maltreatment Reports SFY 2011**

True	Unsubstantiated	Inactive (Unable to Locate)
18	140	1

All allegations of maltreatment concerning foster homes are investigated by the Crimes Against Children Division (CACD) of the Arkansas State Police. DCFS staff do not actively participate in the investigation of these reports. Furthermore, all allegations of maltreatment regarding foster homes require the agency to assess the safety of all children residing in the home.

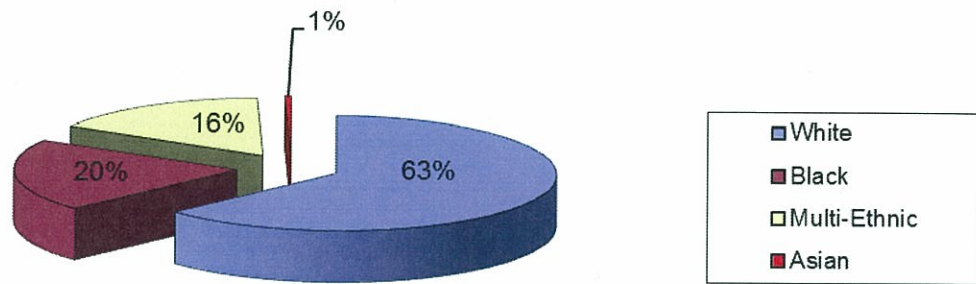
The following charts describe the 225 foster children involved in allegations of maltreatment—with foster parents as alleged offenders—by age, race, gender, allegations, and location.

**Reports by Age**

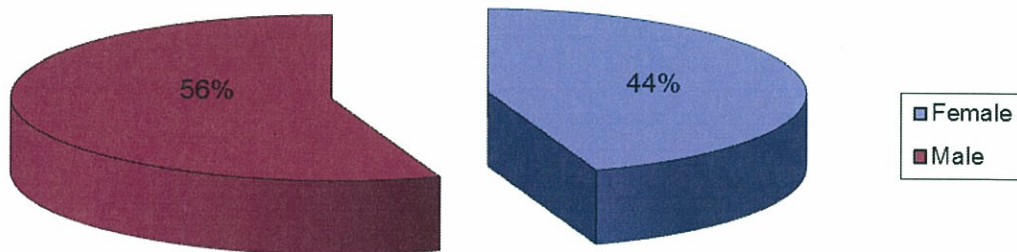


<sup>17</sup> A maltreatment report can include more than one child.

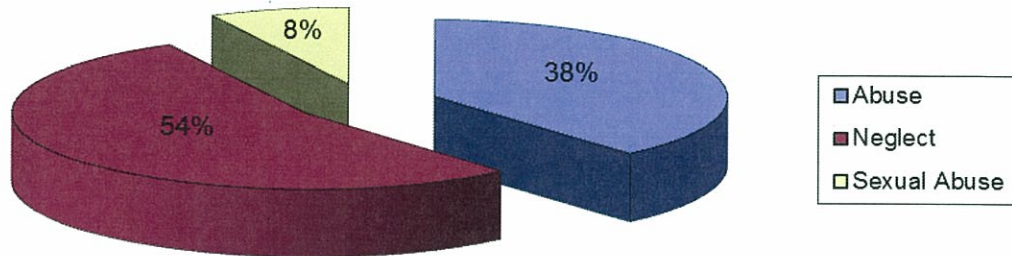
**Reports by Race**



**Reports by Gender**



**Reports by Allegation**



**Reports by County**

County	Number of Children Involved in Maltreatment Report	County	Number of Children Involved in Maltreatment Report
Pulaski	33	Crawford	2
Benton	23	Fulton	2
Washington	16	Little River	2
Sebastian	15	Howard	2
Lonoke	13	Independence	2
Jefferson	12	Sharp	2
Johnson	8	Conway	2
Mississippi	8	Desha	2
Boone	5	Columbia	2
Lafayette	5	Ouachita	2
Poinsett	5	Crittenden	1
St. Francis	5	Clay	1
Franklin	4	Cross	1
Garland	4	Drew	1
Greene	4	Faulkner	1
Saline	4	Hot Spring	1
Clark	4	Scott	1
Phillips	4	Yell	1
White	4	Logan	1
Randolph	3	Marion	1
Polk	3	Pike	1
Calhoun	3	Pope	1
Craighead	3	Prairie	1
Arkansas	3	Hempstead	1