

# EXHIBIT I



## **ARKANSAS STATE POLICE CRIMES AGAINST CHILDREN DIVISION**

### **QUARTERLY REPORT**

**OCTOBER - DECEMBER 2011**

# Oversight Report Crimes Against Children Division

(OCTOBER – DECEMBER 2011)

## Introduction

This report shows the performance of the Arkansas State Police's Crimes Against Children Division (CACD) in the fourth quarter of the year 2011.

The CACD is evaluated on six (6) performance indicators of compliance, which were developed during the Angela R. lawsuit in Federal Court in the 1990s. Also, the indicators are a part of the oversight of the contract with the Arkansas Department of Human Services – Division of Children and Family Services (DCFS).

- ✓ Indicator 01b - The alleged victim(s) in Priority I reports is seen by an investigator within 24 hours.
- ✓ Indicator 02b - The alleged victim(s) in Priority II reports is seen by an investigator within 72 hours.
- ✓ Indicator 03b - All children in the home are seen during the investigation.
- ✓ Indicator 04b - The victim is interviewed/observed outside the presence of the offender.
- ✓ Indicator 05b - Parents/Caretakers are interviewed in all investigations.
- ✓ Indicator 06b - Investigations are concluded within 30 days of receipt of the allegation.

This report presents the Crimes Against Children Division's compliance rate with each of the performance indicators, followed by the individual sections' activity. The self-monitored areas are included in the appropriate section if not previously presented in the performance indicator information.

# EXHIBIT I



## **ARKANSAS STATE POLICE CRIMES AGAINST CHILDREN DIVISION**

### **QUARTERLY REPORT**

**OCTOBER - DECEMBER 2011**

# Oversight Report Crimes Against Children Division

(OCTOBER – DECEMBER 2011)

## Introduction

This report shows the performance of the Arkansas State Police's Crimes Against Children Division (CACD) in the fourth quarter of the year 2011.

The CACD is evaluated on six (6) performance indicators of compliance, which were developed during the Angela R. lawsuit in Federal Court in the 1990s. Also, the indicators are a part of the oversight of the contract with the Arkansas Department of Human Services – Division of Children and Family Services (DCFS).

- ✓ Indicator 01b - The alleged victim(s) in Priority I reports is seen by an investigator within 24 hours.
- ✓ Indicator 02b - The alleged victim(s) in Priority II reports is seen by an investigator within 72 hours.
- ✓ Indicator 03b - All children in the home are seen during the investigation.
- ✓ Indicator 04b - The victim is interviewed/observed outside the presence of the offender.
- ✓ Indicator 05b - Parents/Caretakers are interviewed in all investigations.
- ✓ Indicator 06b - Investigations are concluded within 30 days of receipt of the allegation.

This report presents the Crimes Against Children Division's compliance rate with each of the performance indicators, followed by the individual sections' activity. The self-monitored areas are included in the appropriate section if not previously presented in the performance indicator information.

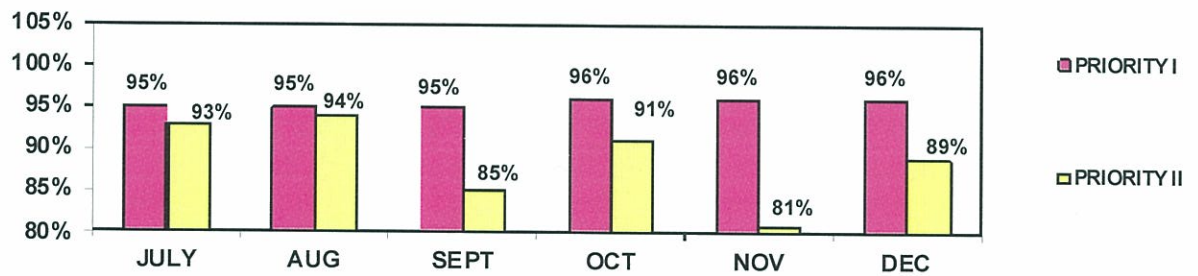
## Compliance Rates

By contract with the Department of Human Services, the Crimes Against Children Division is required to meet a minimum of 85% compliance in each Performance Indicator. The compliance rates reported here are from the monthly Compliance Outcome Report (COR) published by the Division of Children and Family Services.

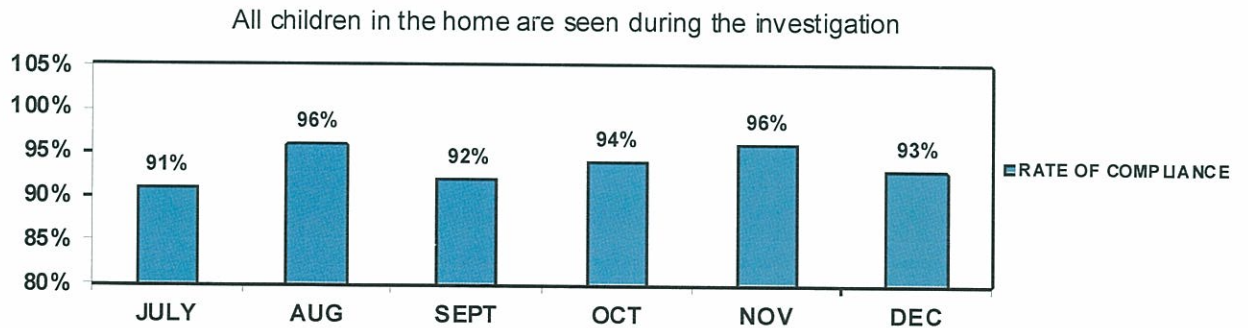
Performance Indicators 1b and 2b require that victim children are seen within 24 hours in a Priority I and 72 hours in a Priority II allegation, respectively.

The alleged victim(s) in **Priority I** reports is seen by an investigator within 24 hours

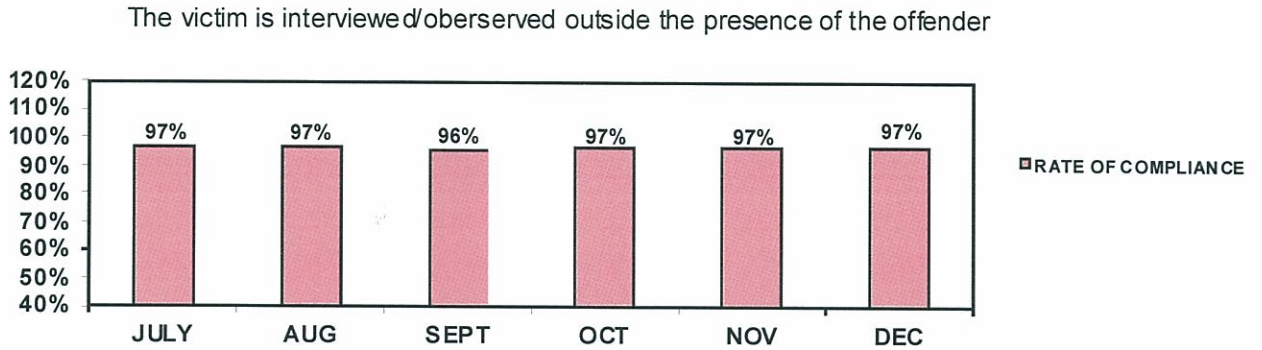
The alleged victim(s) in **Priority II** reports is seen by an investigator within 72 hours



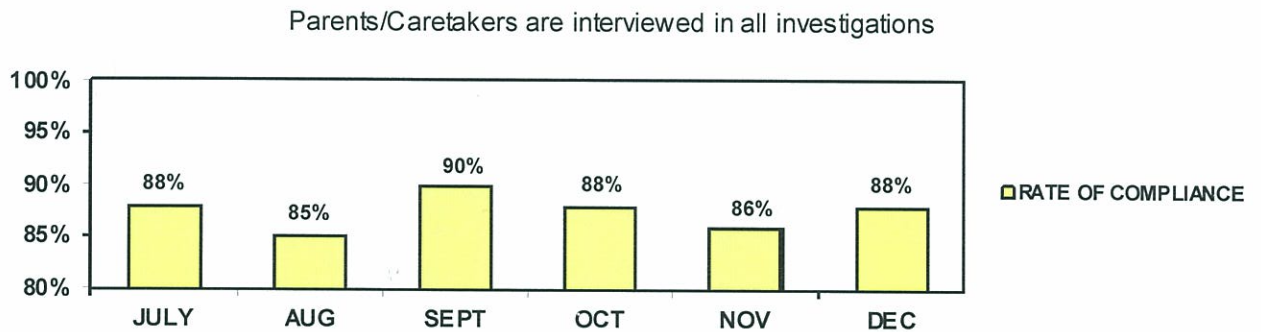
Performance indicator 3b – All children in the home are seen during the investigation.



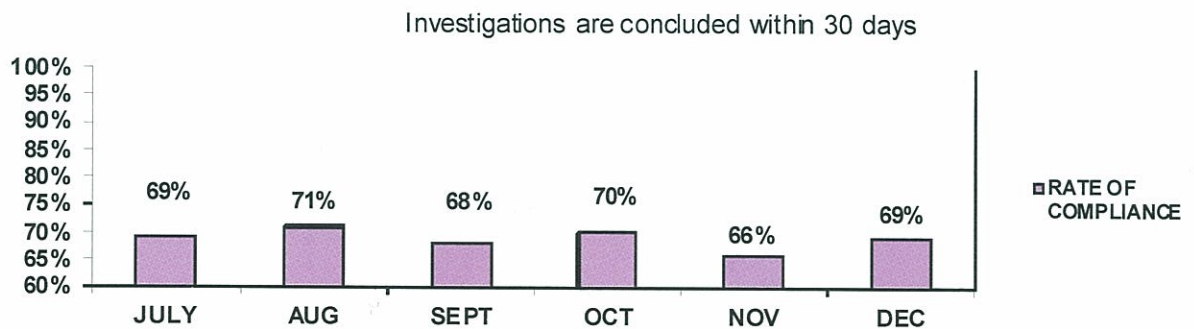
Performance indicator 4b – The child is interviewed (non-verbal children observed) outside the presence of the alleged offender.



Performance indicator 5b – Parents/Caretakers are interviewed in all cases.



Performance indicator 6b – Investigations completed within 30 days of receipt.



## Investigation Section

As demonstrated in the chart, the 'true' rate averaged **40%** for the months of **October, November and December 2011**.

<u>Month</u>	<u>Opened</u>	<u>Closed</u>	<u>True</u>	<u>Sub Rate</u>	<u>Total Active</u>	<u>Active &gt;30</u>
October	449	426	174	41%	632	198
November	488	462	200	43%	645	194
December	408	491	183	37%	564	215

When a Priority I allegation is received, local law enforcement is notified. The local agency has the option of conducting the investigation independently or jointly with CACD, or declining involvement at that point. If local authorities decline to investigate and if the CACD investigator finds sufficient information to suspect that a serious crime has occurred, the investigator shall contact the State Police Criminal Investigation Division (CID) and request that a criminal investigation be conducted.

CACD investigators forward reports on 'true' investigations to the prosecuting attorney for review and possible criminal prosecution.

## Child Abuse Hotline

Hotline activity during the three (3) months:

	<u>Calls Received</u>	<u>Reports Accepted</u>
October	5,182	3,231
November	5,199	3,191
December	4,601	2,748

The following chart demonstrates the relationship of the "Sexual & Physical Abuse" Priority I & II reports to the total number of cases accepted by the Hotline for investigation. The Hotline dispatched **1,454** cases for investigation by the CACD during the three-month period, while DCFS was assigned **7,716** Priority II cases.

	<u>Total Reports</u>	<u># Sexual &amp; Physical Abuse</u>	<u>% Total = Sexual &amp; Physical Abuse</u>
October	3,231	496	15%
November	3,191	537	17%
December	2,748	421	15%
<b>Total</b>	<b>9,170</b>	<b>1,454</b>	<b>16%</b>



**SECTION II**

---

**CRIMES AGAINST CHILDREN  
DIVISION**

---

**SEVERE PHYSICAL & SEXUAL  
ABUSE ALLEGATIONS REPORTED  
BY TYPE  
&  
CIVILIAN INVESTIGATORS' ACTIVITIES**

---

**QUARTERLY REPORT**

**OCTOBER - DECEMBER 2011**

ABUSE ALLEGATIONS REPORTED BY TYPE

FEBRUARY 2011		MARCH 2011	
<i>Allegation Title</i>	<i># Reported</i>	<i>Allegation Title</i>	<i># Reported</i>
Bruises Cuts & Welts	14	Bruises Cuts & Welts	9
Abuse with a Deadly Weapon	11	Abuse with a Deadly Weapon	15
Bone Fractures	11	Bone Fractures	15
Brain Damage/Skull Fracture	4	Brain Damage/Skull Fracture	5
Burns/Scalding	15	Burns/Scalding	16
Failure to Protect/Thrive	3/25	Failure to Protect/Thrive	0/35
Immersion	0	Immersion	0
Indecent Exposure	15	Indecent Exposure	26
Internal Injuries	1	Internal Injuries	0
Juvenile Aggressor	1	Juvenile Aggressor	1
Malnutrition	1	Malnutrition	2
Medical Neglect of Dis. Infant	0	Medical Neglect of Dis. Infant	0
Oral Sex/Mental Injury	32/0	Oral Sex/Mental Injury	58/1
Poison/Noxious	26	Poison/Noxious	24
Pornography	37	Pornography	19
Sexual Contact	309	Sexual Contact	409
Sexual Exploitation	9	Sexual Exploitation	18
Sexual Penetration	146	Sexual Penetration	173
Voyeurism	8	Voyeurism	1
Subdural Hematoma	3	Subdural Hematoma	6
Suffocation	23	Suffocation	31
Threat of Harm	25	Threat of Harm	20
<b>Total for Month</b>	<b>719</b>	<b>Total for Month</b>	<b>884</b>
APRIL 2011		MAY 2011	
<i>Allegation Title</i>	<i># Reported</i>	<i>Allegation Title</i>	<i># Reported</i>
Bruises Cuts & Welts	12	Bruises Cuts & Welts	8
Abuse with a Deadly Weapon	10	Abuse with a Deadly Weapon	6
Bone Fractures	11	Bone Fractures	9
Brain Damage/Skull Fracture	2	Brain Damage/Skull Fracture	0
Burns/Scalding	31	Burns/Scalding	22
Failure to Protect/Thrive	1/26	Failure to Protect/Thrive	25/0
Immersion	4	Immersion	2
Indecent Exposure	24	Indecent Exposure	22
Internal Injuries	2	Internal Injuries	1
Juvenile Aggressor	1	Juvenile Aggressor	0
Malnutrition	0	Malnutrition	0
Medical Neglect of Dis. Infant	0	Medical Neglect of Dis. Infant	0
Oral Sex/Mental Injury	51/1	Oral Sex/ Mental Injury	41/1
Poison/Noxious	22	Poison/Noxious	23
Pornography	15	Pornography	51
Sexual Contact	394	Sexual Contact	332
Sexual Exploitation	15	Sexual Exploitation	7
Sexual Penetration	182	Sexual Penetration	155
Voyeurism	1	Voyeurism	2
Subdural Hematoma	2	Subdural Hematoma	1
Suffocation	37	Suffocation	20
Threat of Harm	14	Threat of Harm	12
<b>Total for Month</b>	<b>858</b>	<b>Total for Month</b>	<b>740</b>

ABUSE ALLEGATIONS REPORTED BY TYPE

JUNE 2011		JULY 2011	
<i>Allegation Title</i>	<i># Reported</i>	<i>Allegation Title</i>	<i># Reported</i>
Bruises Cuts & Welts	8	Bruises Cuts & Welts	12
Abuse with a Deadly Weapon	9	Abuse with a Deadly Weapon	10
Bone Fractures	8	Bone Fractures	11
Brain Damage/Skull Fracture	4	Brain Damage/Skull Fracture	2
Burns/Scalding	18	Burns/Scalding	31
Failure to Protect/Thrive	18/1	Failure to Protect/Thrive	1/26
Immersion	2	Immersion	1/3
Indecent Exposure	21	Indecent Exposure	24
Internal Injuries	0	Internal Injuries	2
Juvenile Aggressor	0	Juvenile Aggressor	1
Malnutrition	1	Malnutrition	0
Medical Neglect of Dis. Infant	0	Medical Neglect of Dis. Infant	0
Oral Sex / Mental Injury	54/0	Oral Sex / Mental Injury	51/1
Poison/Noxious	18	Poison/Noxious	22
Pornography	9	Pornography	15
Sexual Contact	379	Sexual Contact	394
Sexual Exploitation	20	Sexual Exploitation	15
Sexual Penetration	174	Sexual Penetration	182
Voyeurism	4	Voyeurism	1
Subdural Hematoma	0	Subdural Hematoma	2
Suffocation	16	Suffocation	37
Threat of Harm	13	Threat of Harm	14
<b>Total for Month</b>	<b>777</b>	<b>Total for Month</b>	<b>858</b>
AUGUST 2011		SEPTEMBER 2011	
<i>Allegation Title</i>	<i># Reported</i>	<i>Allegation Title</i>	<i># Reported</i>
Bruises Cuts & Welts	8	Bruises Cuts & Welts	8
Abuse with a Deadly Weapon	6	Abuse with a Deadly Weapon	9
Bone Fractures	9	Bone Fractures	8
Brain Damage/Skull Fracture	0	Brain Damage/Skull Fracture	4
Burns/Scalding	22	Burns/Scalding	18
Failure to Protect/Thrive	25/0	Failure to Protect/Thrive	18/1
Immersion	2	Immersion	2
Indecent Exposure	22	Indecent Exposure	21
Internal Injuries	1	Internal Injuries	0
Juvenile Aggressor	0	Juvenile Aggressor	0
Malnutrition	0	Malnutrition	1
Medical Neglect of Dis. Infant	0	Medical Neglect of Dis. Infant	0
Oral Sex/ Mental Injury	41/1	Oral Sex / Mental Injury	54/0
Poison/Noxious	23	Poison/Noxious	18
Pornography	51	Pornography	9
Sexual Contact	332	Sexual Contact	379
Sexual Exploitation	7	Sexual Exploitation	20
Sexual Penetration	155	Sexual Penetration	174
Voyeurism	2	Voyeurism	4
Subdural Hematoma	1	Subdural Hematoma	0
Suffocation	20	Suffocation	16
Threat of Harm	12	Threat of Harm	13
<b>Total for Month</b>	<b>740</b>	<b>Total for Month</b>	<b>777</b>

ABUSE ALLEGATIONS REPORTED BY TYPE

OCTOBER 2011		NOVEMBER 2011	
<i>Allegation Title</i>	<i># Reported</i>	<i>Allegation Title</i>	<i># Reported</i>
Bruises Cuts & Welts	10	Bruises Cuts & Welts	6
Abuse with a Deadly Weapon	4	Abuse with a Deadly Weapon	7
Bone Fractures	7	Bone Fractures	8
Brain Damage/Skull Fracture	3	Brain Damage/Skull Fracture	1
Burns/Scalding	17	Burns/Scalding	13
Failure to Protect/Thrive	25/0	Failure to Protect/Thrive	21/0
Immersion	1	Immersion/Inadequate Sup.	0
Indecent Exposure	15	Indecent Exposure	20
Internal Injuries	1	Internal Injuries	0
Juvenile Aggressor	1	Juvenile Aggressor	2
Malnutrition	0	Malnutrition	1
Medical Neglect of Dis. Infant	0	Medical Neglect of Dis. Infant	0
Oral Sex / Mental Injury	30/2	Oral Sex/ Mental Injury	43/2
Poison/Noxious	12	Poison/Noxious	10
Pornography	20	Pornography	16
Sexual Contact	301	Sexual Contact	368
Sexual Exploitation	16	Sexual Exploitation	11
Sexual Penetration	125	Sexual Penetration	146
Voyeurism	2	Voyeurism	1
Subdural Hematoma	4	Subdural Hematoma	1
Suffocation	27	Suffocation	28
Threat of Harm	21	Threat of Harm	13
<b>Total for Month</b>	<b>644</b>	<b>Total for Month</b>	<b>718</b>
DECEMBER 2011			
<i>Allegation Title</i>	<i># Reported</i>		
Bruises Cuts & Welts	10		
Abuse with a Deadly Weapon	4		
Bone Fractures	16		
Brain Damage/Skull Fracture	2		
Burns/Scalding	11		
Failure to Protect/Thrive	19/1		
Immersion	0		
Indecent Exposure	13		
Internal Injuries	0		
Juvenile Aggressor	1		
Malnutrition	0		
Medical Neglect of Dis. Infant	0		
Oral Sex / Mental Injury	32/2		
Poison/Noxious	4		
Pornography	10		
Sexual Contact	252		
Sexual Exploitation	14		
Sexual Penetration	109		
Voyeurism	9		
Subdural Hematoma	2		
Suffocation	19		
Threat of Harm	14		
<b>Total for Month</b>	<b>541</b>		

ARKANSAS STATE POLICE CRIMES AGAINST CHILDREN DIVISION  
CIVILIAN INVESTIGATIONS (CI)

Administrator - Debbie Roark	ASSIGNED	CLOSED	TRUE	UNSUB	INACTIVE	INITIATED	COMPLETED	INTERVIEWS
<b>AREA 1 INVESTIGATORS</b>								
1 Belinda Reynolds	7	8	5	3	0	7	8	65
2 Karis Chastain	8	5	2	3	0	8	3	57
3 Kimberly Pierce	9	10	5	4	1	9	10	45
4 Dale Chiddister	10	9	5	4	0	10	8	45
5 Tracie Moreland	10	11	4	6	1	10	9	61
6 Kellie Worsley	8	15	9	6	0	8	7	88
7 Bob Willis	5	9	2	7	0	5	9	51
8 Jim Kibat	9	10	6	4	0	9	7	58
<b>Ken Hunt - Supervisor</b>	0	0	0	0	0	0	0	0
TOTAL	66	77	38	37	2	66	61	470
<b>AREA 2 INVESTIGATORS</b>								
1 Sherri Buckner	10	9	4	5	0	4	4	90
2 Sam Dorrrough	11	12	4	8	0	8	8	40
3 Dana Dusha	11	9	5	4	0	6	6	36
4 Tara Flute	8	8	2	6	0	4	4	43
5 Christy Jackson	4	8	4	4	0	8	8	54
6 Tamara Jones	8	10	6	4	0	5	5	36
7 Deanna Lacefield	10	8	4	4	0	8	8	155
<b>Teri Ward - Supervisor</b>	0	0	0	0	0	0	0	12
TOTAL	62	64	29	35	0	43	43	466
<b>AREA 3 INVESTIGATORS</b>								
1 Jannette Cooper	8	5	2	3	0	8	0	45
2 Suzie Roberts	12	10	6	4	0	12	10	72
3 Jim Milam	9	11	6	5	0	9	5	130
4 Kevin Estes	10	8	3	5	0	10	7	42
5 Brooke Junkersfeld	12	8	4	4	0	12	0	82
<b>J. R. Davenport - Supervisor</b>	0	0	0	0	0	0	0	10
TOTAL	51	42	21	21	0	51	22	381
<p>Totals reflect the Investigator's activity, but not necessarily the Area Activity, due to Investigators being assigned temporarily to work in Areas with heavier case load</p>								

ARKANSAS STATE POLICE CRIMES AGAINST CHILDREN DIVISION  
CIVILIAN INVESTIGATIONS (CI)

	ASSIGNED	CLOSED	TRUE	UNSUB	INACTIVE	INITIATED	COMPLETED	INTERVIEWS
<b>AREA 4 INVESTIGATORS</b>								
1 Charles Anderson	10	15	6	9	0	10	15	156
2 Lanea Blagburn	12	12	6	6	0	12	11	135
3 Patty Hibbs	10	10	5	5	0	10	10	128
4 Mary Pifer	9	15	5	10	0	9	14	142
5 Tonya Tackett	4	12	1	11	0	4	12	44
6 Daryl Tidwell	5	3	2	1	0	5	3	90
7 Niya Shaw	9	4	0	4	0	9	4	119
<b>Matt Caton- Supervisor</b>	0	0	0	0	0	0	0	5
<b>TOTAL</b>	59	71	25	46	0	59	69	819
<b>AREA 5 INVESTIGATORS</b>								
1 Tammy Dulaney	8	14	3	11	0	8	11	51
2 Mike Hall	10	8	1	7	0	10	4	61
3 Chris Lewis	0	0	0	0	0	0	0	0
4 Tim Lipscomb	9	8	1	7	0	9	8	35
5 Larry Melville	7	6	1	5	0	7	5	35
6 Darla Thompson	5	1	0	0	1	5	1	47
6 Kimberly Warner	6	4	2	2	0	6	3	30
<b>Willene Slavik - Supervisor</b>	0	0	0	0	0	0	0	0
<b>TOTAL</b>	45	41	8	32	1	45	32	259
<b>AREA 6 INVESTIGATORS</b>								
1 Renee Owens	12	6	4	2	0	12	6	68
2 Andrew Wills	11	7	5	2	0	11	6	120
3 Jamie Moore	12	9	6	3	0	12	8	52
4 Kerri Fowler	10	8	3	3	2	10	7	72
5 Connie Bromley	5	8	4	4	0	5	6	30
6 Lakesha White	9	10	5	5	0	9	7	87
7 Sherrice Vales	11	7	2	5	0	11	5	50
8 Lesley Faulkner	10	5	4	1	0	10	5	80
<b>Lea Ann Vanaman - Supervisor</b>	0	0	0	0	0	0	0	0
<b>TOTAL</b>	80	60	33	25	2	80	50	559

ARKANSAS STATE POLICE CRIMES AGAINST CHILDREN DIVISION  
CIVILIAN INVESTIGATIONS (CI)

	ASSIGNED	CLOSED	TRUE	UNSUB	INACTIVE	INITIATED	COMPLETED	INTERVIEWS
<b>AREA 7 INVESTIGATORS</b>								
1 Stephanie Britton	7	8	7	1	0	7	8	91
2 Kay Childs-Travis	9	3	3	0	0	9	3	44
3 Tamiaka Gilbert	0	5	3	2	0	0	4	6
4 Anita Hammons	9	6	6	0	0	9	5	58
5 Dorris Hill	4	6	4	2	0	4	6	60
6 Kimberly Owens	8	11	4	7	0	8	9	82
7 Icephine Sykes	7	7	3	4	0	7	4	43
<b>Phyllis Newton - Supervisor</b>	0	0	0	0	0	0	0	1
<b>TOTAL</b>	44	46	30	16	0	44	39	385
<b>AREA 8 INVESTIGATORS</b>								
1 Elena Cannon	7	6	2	4	0	7	6	34
2 David Hampton	8	12	6	6	0	8	10	65
3 Emily Hampton	6	9	4	5	0	6	7	80
4 Kathy House	7	10	4	6	0	7	6	59
5 Doug Shuffield	6	9	7	2	0	6	8	50
<b>Laurie Alexander - Supervisor</b>	0	0	0	0	0	0	0	0
<b>TOTAL</b>	34	46	23	23	0	34	37	288
<b>AREA 9 INVESTIGATORS</b>								
Zack Barnes	12	17	4	13	0	12	11	75
Shelley Cousins	13	7	2	4	0	13	4	68
Sarah Longtin	8	11	3	7	0	8	6	40
Tollece Sutter	7	8	5	2	0	7	3	55
Amanda Chaney	8	16	6	10	0	8	11	70
Kristin Wilson	10	8	2	6	0	10	8	120
<b>Michelle Gatlin- Supervisor</b>	0	0	0	0	0	0	0	0
<b>TOTAL</b>	58	67	22	42	0	58	43	428
<b>UNIT TOTAL</b>	<b>499</b>	<b>514</b>	<b>229</b>	<b>299</b>	<b>5</b>	<b>499</b>	<b>396</b>	<b>4055</b>

CHART A (Nov 2011)

ARKANSAS STATE POLICE CRIMES AGAINST CHILDREN DIVISION  
CIVILIAN INVESTIGATIONS (CI)

Administrator - Debbie Roark	ASSIGNED	CLOSED	TRUE	UNSUB	INACTIVE	INITIATED	COMPLETED	INTERVIEWS
<b>AREA 1 INVESTIGATORS</b>								
1 Belinda Reynolds	9	9	7	2	0	9	7	50
2 Karis Chastain	11	7	3	4	0	11	5	53
3 Kimberly Pierce	12	11	2	9	0	12	9	46
4 Dale Chiddister	10	9	3	6	0	10	8	40
5 Tracie Moreland	13	9	7	2	0	13	7	62
6 Bob Willis	9	7	4	3	0	9	4	56
7 Jim Kibat	10	8	3	5	0	10	2	55
<b>Ken Hunt - Supervisor</b>	0	0	0	0	0	0	0	0
<b>TOTAL</b>	74	60	29	31	0	74	42	362
<b>AREA 2 INVESTIGATORS</b>								
1 Sherri Buckner	5	10	4	6	0	5	5	48
2 Sam Dorrrough	9	9	6	3	0	9	7	35
3 Dana Dusha	8	15	7	8	0	8	10	88
4 Tara Flute	8	11	5	6	0	8	8	37
5 Christy Jackson	5	7	5	2	0	5	6	56
6 Tamara Jones	8	9	4	5	0	8	5	69
7 Deanna Lacefield	9	5	2	3	0	9	5	55
<b>Teri Ward - Supervisor</b>	0	0	0	0	0	0	0	0
<b>TOTAL</b>	52	66	33	33	0	52	46	388
<b>AREA 3 INVESTIGATORS</b>								
1 Jannette Cooper	11	7	1	6	0	11	7	80
2 Suzie Roberts	5	11	7	4	0	5	6	62
3 Jim Milam	10	7	4	3	0	10	5	108
4 Kevin Estes	5	14	3	11	0	5	4	54
5 Brooke Junkersfeld	8	5	2	3	0	8	4	30
6 Jamie Nesbitt	7	5	2	3	0	7	2	30
7 Misty Fowler	12	12	8	4	0	12	6	60
<b>J. R. Davenport - Supervisor</b>	0	0	0	0	0	0	0	0
<b>TOTAL</b>	58	61	27	34	0	58	34	424

Totals reflect the Investigator's activity, but not necessarily the Area Activity, due to Investigators being assigned temporarily to work in Areas with heavier case load



CHART A (Nov 2011)  
 ARKANSAS STATE POLICE CRIMES AGAINST CHILDREN DIVISION  
 CIVILIAN INVESTIGATIONS (CI)

	ASSIGNED	CLOSED	TRUE	UNSUB	INACTIVE	INITIATED	COMPLETED	INTERVIEWS
<b>AREA 4 INVESTIGATORS</b>								
1 Charles Anderson	9	14	4	10	0	9	13	114
2 Garrick Rogers	0	0	0	0	0	0	0	6
3 Patty Hibbs	8	7	3	4	0	8	7	73
4 Mary Pifer	8	9	4	5	0	8	8	133
5 Tonya Tackett	8	10	4	6	0	8	10	92
6 Daryl Tidwell	7	8	2	6	0	7	8	111
7 Niya Shaw	8	11	5	6	0	8	11	98
<b>Matt Caton - Supervisor</b>	0	0	0	0	0	0	0	15
<b>TOTAL</b>	48	59	22	37	0	48	57	642
<b>AREA 5 INVESTIGATORS</b>								
1 Tammy Dulaney	12	10	0	10	0	12	7	34
2 Mike Hall	8	6	5	1	0	8	3	63
3 Chris Lewis	10	5	1	4	0	10	5	67
4 Tim Lipscomb	7	8	5	3	0	7	4	23
5 Larry Melville	8	13	5	8	0	8	7	30
6 Darla Thompson	6	4	2	1	0	6	4	63
7 Kimberly Warner	9	4	1	3	0	9	0	25
<b>Willene Slavik - Supervisor</b>	0	0	0	0	0	0	0	0
<b>TOTAL</b>	60	50	19	30	0	60	30	305
<b>AREA 6 INVESTIGATORS</b>								
1 Renee Owens	0	0	0	0	0	0	0	0
2 Rebbeca Underwood	0	0	0	0	0	0	0	0
3 Jamie Moore	8	8	2	6	0	8	7	35
4 Kerri Fowler	9	9	4	5	0	9	7	54
5 Andy Wills	9	8	5	3	0	9	10	77
6 Lakesha White	9	12	7	5	0	9	10	77
7 Sherrice Vales	10	8	4	4	0	10	7	50
8 Lesley Faulkner	10	9	1	8	0	10	4	50
<b>Lea Ann Vanaman - Supervisor</b>	0	0	0	0	0	0	0	0
<b>TOTAL</b>	55	54	23	31	0	55	45	343

CHART A (Nov 2011)

ARKANSAS STATE POLICE CRIMES AGAINST CHILDREN DIVISION  
CIVILIAN INVESTIGATIONS (CI)

	ASSIGNED	CLOSED	TRUE	UNSUB	INACTIVE	INITIATED	COMPLETED	INTERVIEWS
<b>AREA 7 INVESTIGATORS</b>								
1 Stephanie Britton	5	6	1	5	0	5	6	62
2 Kay Childs-Travis	7	6	1	5	0	7	5	52
3 Anita Hammons	5	7	4	3	0	5	5	30
4 Dorris Hill	8	11	5	6	0	8	9	70
5 T. Isaac	6	0	0	0	0	6	0	54
6 Kimberly Owens	5	10	3	7	0	5	10	54
7 Iciephine Sykes	5	5	2	3	0	5	4	27
<b>Phyllis Newton - Supervisor</b>	0	0	0	0	0	0	0	3
<b>TOTAL</b>	41	45	16	29	0	41	39	352
<b>AREA 8 INVESTIGATORS</b>								
1 Alisa Gorden	8	9	6	3	0	8	7	41
2 David Hampton	7	4	2	2	0	6	7	30
3 Emily Hampton	6	4	3	1	0	6	3	60
5 Kathy House	9	5	2	3	0	9	2	45
6 Doug Shuffield	7	3	0	3	0	7	2	36
7 Kristi Williamson	7	2	1	1	0	7	2	45
<b>Laurie Alexander - Supervisor</b>	0	0	0	0	0	0	0	0
<b>TOTAL</b>	44	27	14	13	0	43	23	257
<b>AREA 9 INVESTIGATORS</b>								
1 Zack Barnes	11	8	0	8	0	11	8	68
2 Amanda Chaney	10	10	6	4	0	10	5	60
3 Shelley Cousins	12	6	1	5	0	12	5	70
4 Sarah Longtin	10	9	6	3	0	10	5	50
5 Tollece Sutter	13	7	4	3	0	13	6	70
<b>Michelle Gatlin- Supervisor</b>	0	0	0	0	0	0	0	0
<b>TOTAL</b>	56	40	17	23	0	56	29	318
<b>UNIT TOTAL</b>	<b>488</b>	<b>462</b>	<b>200</b>	<b>261</b>	<b>1</b>	<b>487</b>	<b>345</b>	<b>3391</b>
<b>AREA 1</b>	<b>AREA 2</b>	<b>AREA 3</b>	<b>AREA 4</b>	<b>AREA 5</b>	<b>AREA 6</b>	<b>AREA 7</b>	<b>AREA 8</b>	<b>AREA 9</b>
Benton Washington	Crawford, Franklin Johnson, Logan Pope, Sebastian Yell	Baxter, Boone, Carroll, Fulton Izard, Lawrence, Madison, Marion Newton, Randolph Searcy, Sharp, Stone	Pulaski	Cleburne, Lee Jackson, Lonoke Independence, Monroe, Phillips Prairie, White, St. Francis, Woodruff	Clay, Craighead, Crittenden, Greene, Mississippi, Poinsett Cross	Arkansas, Ashley, Bradley, Calhoun, Chicot, Cleveland, Dallas, Desha, Jefferson, Lincoln, Quachita, Union Drew	Clark, Columbia, Grant Hempstead, Howard, Hot Spring, Lafayette, Little River, Miller, Montgomery, Nevada Pike, Polk, Scott, Sevier	Faulkner, Garland, Perry, Saline, Van Buren, Conway

ARKANSAS STATE POLICE CRIMES AGAINST CHILDREN DIVISION  
CIVILIAN INVESTIGATIONS (CI)

Administrator - Debbie Roark	ASSIGNED	CLOSED	TRUE	UNSUB	INACTIVE	INITIATED	COMPLETED	INTERVIEWS
<b>AREA 1 INVESTIGATORS</b>								
1 Belinda Reynolds	6	8	1	7	0	6	8	40
2 Karis Chastain	9	6	2	4	0	9	3	57
3 Kimberly Pierce	11	14	3	11	0	11	9	55
4 Dale Chiddister	10	9	4	5	0	10	9	50
5 Tracie Moreland	10	11	2	9	0	10	10	67
6 Kellie Worsley	2	0	0	0	0	2	0	6
7 Bob Willis	5	12	2	10	0	5	9	31
8 Jim Kibat	10	9	2	7	0	10	7	78
<b>Ken Hunt - Supervisor</b>	0	0	0	0	0	0	0	0
<b>TOTAL</b>	63	69	16	53	0	63	55	384
<b>AREA 2 INVESTIGATORS</b>								
1 Sherri Buckner	7	4	2	2	0	7	2	63
2 Sam Dorrrough	9	13	4	9	0	9	8	60
3 Dana Dusha	9	6	2	4	0	8	6	42
4 Tara Flute	10	9	3	6	0	10	7	31
5 Christy Jackson	6	6	3	3	0	6	6	60
6 Tamara Jones	9	9	4	5	0	9	9	55
7 Deanna Lacefield	6	9	3	6	0	6	8	45
<b>Teri Ward - Supervisor</b>	0	0	0	0	0	0	0	0
<b>TOTAL</b>	56	56	21	35	0	55	46	356
<b>AREA 3 INVESTIGATORS</b>								
1 Jannette Cooper	5	11	4	7	0	5	10	51
3 Kevin Estes	11	4	2	4	0	11	3	39
4 Misty Fowler	7	8	5	6	0	7	7	50
5 Brooke Junkersfeld	3	9	4	4	0	3	3	30
6 Jim Milam	8	8	2	4	0	8	7	75
7 Jamie Nesbitt	7	5	0	3	0	7	2	40
<b>J. R. Davenport - Supervisor</b>	0	0	0	0	0	0	0	3
<b>TOTAL</b>	41	45	17	28	0	41	32	288
<p>Totals reflect the Investigator's activity, but not necessarily the Area Activity, due to Investigators being assigned temporarily to work in Areas with heavier case load</p>								

ARKANSAS STATE POLICE CRIMES AGAINST CHILDREN DIVISION  
CIVILIAN INVESTIGATIONS (CI)

	ASSIGNED	CLOSED	TRUE	UNSUB	INACTIVE	INITIATED	COMPLETED	INTERVIEWS
<b>AREA 4 INVESTIGATORS</b>								
1 Charles Anderson	6	8	3	5	0	6	7	123
2 Garrick Rogers	7	2	1	1	0	7	2	70
3 Patty Hibbs	7	8	4	4	0	7	7	50
4 Mary Pifer	6	8	2	6	0	6	8	118
5 Tonya Tackett	5	8	4	4	0	5	7	56
6 Daryl Tidwell	4	6	4	2	0	4	6	76
7 Niya Shaw	6	6	1	5	0	6	6	113
<b>Matt Caton - Supervisor</b>	0	0	0	0	0	0	0	0
<b>TOTAL</b>	41	46	19	27	0	41	43	606
<b>AREA 5 INVESTIGATORS</b>								
1 Tammy Dulaney	9	15	5	9	1	9	15	51
2 Mike Hall	3	11	1	10	0	3	2	53
3 Chris Lewis	5	8	3	5	0	5	7	62
4 Tim Lipscomb	8	8	1	7	0	8	8	33
5 Larry Melville	7	14	4	10	0	7	7	30
6 Darla Thompson	5	7	0	7	0	5	3	64
7 Kimberly Warner	7	8	3	5	0	7	4	27
<b>Willene Slavik - Supervisor</b>	0	0	0	0	0	0	0	0
<b>TOTAL</b>	44	71	17	53	1	44	46	320
<b>AREA 6 INVESTIGATORS</b>								
1 Renee Owens	0	0	0	0	0	0	0	0
2 Rebecca Underwood	0	0	0	0	0	0	0	0
3 Jamie Moore	6	6	2	4	0	6	4	35
4 Kerri Fowler	7	10	4	6	0	7	10	40
5 Andrew Willis	11	6	2	4	0	7	6	90
6 Lakesha White	7	7	1	6	0	7	7	65
7 Sherrice Vales	14	10	5	5	0	12	10	50
8 Lesley Faulkner	7	8	5	3	0	5	8	35
<b>Lea Ann Vanaman - Supervisor</b>	0	0	0	0	0	0	0	0
<b>TOTAL</b>	52	47	19	28	0	44	45	315

ARKANSAS STATE POLICE CRIMES AGAINST CHILDREN DIVISION  
CIVILIAN INVESTIGATIONS (CI)

	ASSIGNED	CLOSED	TRUE	UNSUB	INACTIVE	INITIATED	COMPLETED	INTERVIEWS
<b>AREA 7 INVESTIGATORS</b>								
1 Stephanie Britton	4	6	3	3	0	4	6	55
2 Kay Childs-Travis	4	7	5	2	0	4	6	36
3 Anita Hammons	6	8	2	6	0	5	6	30
4 Dorris Hill	4	9	3	6	0	4	7	55
5 Kimberly Owens	5	5	3	2	0	5	5	61
6 Iciephine Sykes	6	6	3	3	0	6	5	76
<b>Phyllis Newton - Supervisor</b>	5	6	4	2	0	5	3	34
<b>TOTAL</b>	34	47	23	24	0	33	38	347
<b>AREA 8 INVESTIGATORS</b>								
1 Alisa Gorden	8	8	5	3	0	8	7	65
2 David Hampton	8	4	2	2	0	8	4	25
3 Emily Hampton	5	7	4	3	0	5	5	50
4 Kathy House	5	6	3	3	0	5	5	31
5 Doug Shuffield	5	10	1	9	0	5	6	48
6 Kristi Williamson	5	7	4	3	0	5	7	52
<b>Laurie Alexander - Supervisor</b>	0	0	0	0	0	0	0	0
<b>TOTAL</b>	36	42	19	23	0	36	34	271
<b>AREA 9 INVESTIGATORS</b>								
1 Zack Barnes	8	11	6	5	0	8	10	50
2 Amanda Chaney	8	11	4	7	0	8	11	60
3 Shelley Cousins	6	13	2	11	0	6	9	55
4 Sarah Longtin	9	14	6	8	0	9	10	40
5 Suzie Roberts	6	7	6	1	0	6	5	61
6 Linda Powell	0	0	0	0	0	0	0	5
7 Tollece Sutter	4	12	8	4	0	4	9	32
<b>Michelle Gatlin- Supervisor</b>	0	0	0	0	0	0	0	0
<b>TOTAL</b>	41	68	32	36	0	41	54	303
<b>UNIT TOTAL</b>	<b>408</b>	<b>491</b>	<b>183</b>	<b>307</b>	<b>1</b>	<b>398</b>	<b>393</b>	<b>3190</b>
<b>COUNTIES SERVED</b>								
<b>AREA 1</b>	<b>AREA 2</b>	<b>AREA 3</b>	<b>AREA 4</b>	<b>AREA 5</b>	<b>AREA 6</b>	<b>AREA 7</b>	<b>AREA 8</b>	<b>AREA 9</b>
Benton Washington	Crawford, Franklin Johnson, Logan Pope, Sebastian Yell	Baxter, Boone, Carroll, Fulton Izard, Lawrence, Madison, Marion Newton, Randolph Searcy, Sharp, Stone	Pulaski	Cleburne, Lee Jackson, Lonoke Independence, Monroe, Phillips Prairie, White, St. Francis, Woodruff	Clay, Craighead, Crittenden, Greene, Mississippi, Poinsett Cross	Arkansas, Ashley, Bradley, Calhoun, Chicot, Cleveland, Dallas, Desha, Jefferson, Lincoln, Quachita, Union Drew	Clark, Columbia, Grant Hempstead, Howard, Hot Spring, Lafayette, Little River, Miller, Montgomery, Nevada Pike, Polk, Scott, Sevier	Faulkner, Garland, Perry, Saline, Van Buren, Conway

