

EXHIBIT I

Oversight Report Crimes Against Children Division (January - March 2012)

Introduction

This report shows the performance of the Arkansas State Police's Crimes Against Children Division (CACD) in the first quarter of the year 2012.

The CACD is evaluated on six (6) performance indicators of compliance, which were developed during the Angela R. lawsuit in Federal Court in the 1990s. Also, the indicators are a part of the oversight of the contract with the Arkansas Department of Human Services – Division of Children and Family Services (DCFS).

- ✓ Indicator 01b - The alleged victim(s) in Priority I reports is seen by an investigator within 24 hours.
- ✓ Indicator 02b - The alleged victim(s) in Priority II reports is seen by an investigator within 72 hours.
- ✓ Indicator 03b - All children in the home are seen during the investigation.
- ✓ Indicator 04b - The victim is interviewed/observed outside the presence of the offender.
- ✓ Indicator 05b - Parents/Caretakers are interviewed in all investigations.
- ✓ Indicator 06b - Investigations are concluded within 30 days of receipt of the allegation.

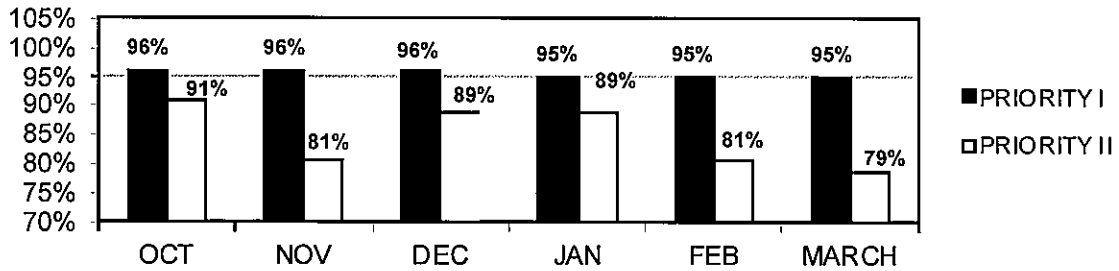
This report presents the Crimes Against Children Division's compliance rate with each of the performance indicators, followed by the individual sections' activity. The self-monitored areas are included in the appropriate section if not previously presented in the performance indicator information.

Compliance Rates

By contract with the Department of Human Services, the Crimes Against Children Division is required to meet a minimum of 85% compliance in each Performance Indicator. The compliance rates reported here are from the monthly Compliance Outcome Report (COR) published by the Division of Children and Family Services.

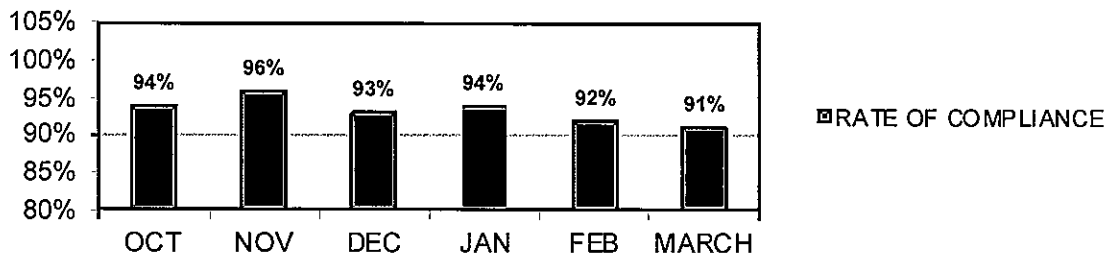
Performance Indicators 1b and 2b require that victim children are seen within 24 hours in a Priority I and 72 hours in a Priority II allegation, respectively.

VICTIM CHILDREN SEEN WITHIN MANDATED TIME



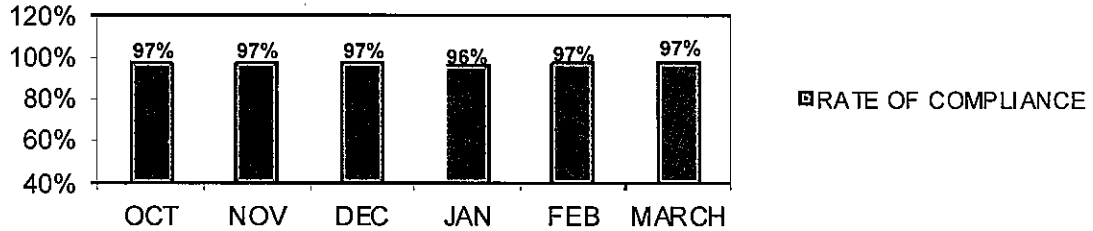
Performance indicator 3b – All children in the home are seen during the investigation.

ALL CHILDREN SEEN IN HOME



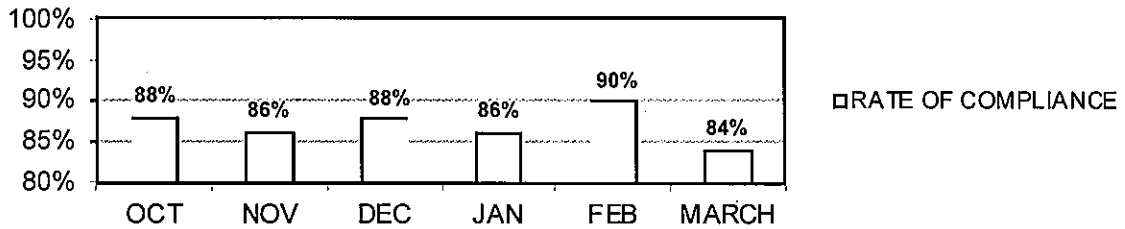
Performance indicator 4b – The child is interviewed (non-verbal children observed) outside the presence of the alleged offender.

CHILDREN INTERVIEWED OUTSIDE OFFENDERS PRESENCE



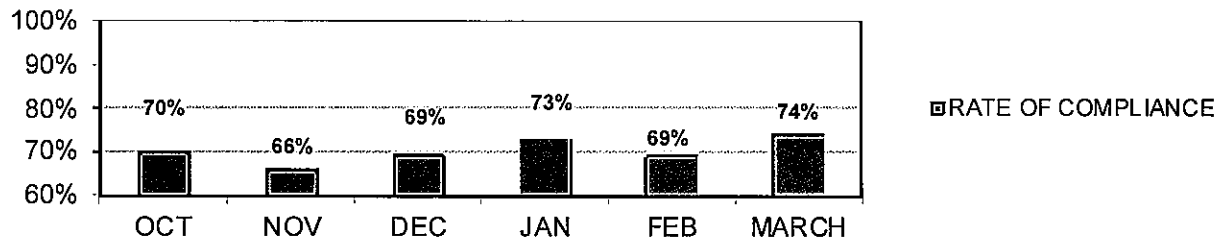
Performance indicator 5b – Parents/Caretakers are interviewed in all cases.

PARENTS/CARETAKERS INTERVIEWED



Performance indicator 6b – Investigations completed within 30 days of receipt.

INVESTIGATIONS COMPLETED WITHIN 30 DAYS



Investigation Section

As demonstrated in the chart, the 'true' rate averaged 41% for the months of January, February and March.

Month	Opened	Closed	True	Sub Rate	Total Active	Active >30
January	546	415	163	39%	683	180
February	543	521	220	42%	685	178
March	516	544	228	42%	669	215

When a Priority I allegation is received, local law enforcement is notified. The local agency has the option of conducting the investigation independently or jointly with CACD, or declining involvement at that point. If local authorities decline to investigate and if the CACD investigator finds sufficient information to suspect that a serious crime has occurred, the investigator shall contact the State Police Criminal Investigation Division (CID) and request that a criminal investigation be conducted.

CACD investigators forward reports on 'true' investigations to the prosecuting attorney for review and possible criminal prosecution.

Child Abuse Hotline

Hotline activity during the three (3) months:

	Calls Received	Reports Accepted
January	5,166	3,366
February	5,139	3,367
March	5,480	3,462

The following chart demonstrates the relationship of the "Sexual & Physical Abuse" Priority I & II reports to the total number of cases accepted by the Hotline for investigation. The Hotline dispatched 1,671 cases for investigation by the CACD during the three-month period, while DCFS was assigned 8,524 Priority II cases.

	Total Reports	# Sexual & Physical Abuse	% Total = Sexual & Physical Abuse
January	3,366	566	17%
February	3,367	550	16%
March	3,462	555	16%
Total	10,195	1,671	16%

SECTION II

**CRIMES AGAINST CHILDREN
DIVISION**

**SEVERE PHYSICAL & SEXUAL
ABUSE ALLEGATIONS REPORTED
BY TYPE
&
CIVILIAN INVESTIGATORS' ACTIVITIES**

QUARTERLY REPORT

JANUARY – MARCH 2012

ABUSE ALLEGATIONS REPORTED BY TYPE

APRIL 2011		MAY 2011	
<i>Allegation Title</i>	<i># Reported</i>	<i>Allegation Title</i>	<i># Reported</i>
Bruises Cuts & Welts	12	Bruises Cuts & Welts	8
Abuse with a Deadly Weapon	10	Abuse with a Deadly Weapon	6
Bone Fractures	11	Bone Fractures	9
Brain Damage/Skull Fracture	2	Brain Damage/Skull Fracture	0
Burns/Scalding	31	Burns/Scalding	22
Failure to Protect/Thrive	1/26	Failure to Protect/Thrive	25/0
Immersion/ DEATH	1/1	Immersion/DEATH	2/0
Indecent Exposure	24	Indecent Exposure	22
Internal Injuries	2	Internal Injuries	1
Juvenile Aggressor	1	Juvenile Aggressor	0
Malnutrition	0	Malnutrition	0
Medical Neglect of Dis. Infant	0	Medical Neglect of Dis. Infant	0
Oral Sex/Mental Injury	51/1	Oral Sex/Mental Injury	41/1
Poison/Noxious	22	Poison/Noxious	23
Pornography	15	Pornography	51
Sexual Contact	394	Sexual Contact	332
Sexual Exploitation	15	Sexual Exploitation	7
Sexual Penetration	182	Sexual Penetration	155
Voyeurism	1	Voyeurism	2
Subdural Hematoma	2	Subdural Hematoma	1
Suffocation	37	Suffocation	20
Threat of Harm	14	Threat of Harm	12
Total for Month	856	Total for Month	740
JUNE 2011		JULY 2011	
<i>Allegation Title</i>	<i># Reported</i>	<i>Allegation Title</i>	<i># Reported</i>
Bruises Cuts & Welts	8	Bruises Cuts & Welts	9
Abuse with a Deadly Weapon	9	Abuse with a Deadly Weapon	3
Bone Fractures	8	Bone Fractures	12
Brain Damage/Skull Fracture	4	Brain Damage/Skull Fracture	4
Burns/Scalding	18	Burns/Scalding	17
Failure to Protect/Thrive	18/1	Failure to Protect/Thrive	30/1
Immersion/ DEATH	2/2	Immersion/ DEATH	2/0
Indecent Exposure	21	Indecent Exposure	20
Internal Injuries	0	Internal Injuries	1
Juvenile Aggressor	0	Juvenile Aggressor	0
Malnutrition	1	Malnutrition	1
Medical Neglect of Dis. Infant	0	Medical Neglect of Dis. Infant	0
Oral Sex/ Mental Injury	54/0	Oral Sex / Mental Injury	2
Poison/Noxious	18	Poison/Noxious	17
Pornography	9	Pornography	17
Sexual Contact	379	Sexual Contact	359
Sexual Exploitation	20	Sexual Exploitation	11
Sexual Penetration	174	Sexual Penetration	159
Voyeurism	4	Voyeurism	1
Subdural Hematoma	0	Subdural Hematoma	5
Suffocation	16	Suffocation	236
Threat of Harm	13	Threat of Harm	20
Total for Month	779	Total for Month	927

ABUSE ALLEGATIONS REPORTED BY TYPE

AUGUST 2011		SEPTEMBER 2011	
<i>Allegation Title</i>	<i># Reported</i>	<i>Allegation Title</i>	<i># Reported</i>
Bruises Cuts & Welts	13	Bruises Cuts & Welts	8
Abuse with a Deadly Weapon	10	Abuse with a Deadly Weapon	12
Bone Fractures	8	Bone Fractures	6
Brain Damage/Skull Fracture	5	Brain Damage/Skull Fracture	4
Burns/Scalding	20	Burns/Scalding	28
Failure to Protect/Thrive	29	Failure to Protect/Thrive	26
Immersion/ DEATH	6/5	Immersion/DEATH	2/3
Indecent Exposure	23	Indecent Exposure	20
Internal Injuries	1	Internal Injuries	0
Juvenile Aggressor	1	Juvenile Aggressor	0
Malnutrition	1	Malnutrition	0
Medical Neglect of Dis. Infant	0	Medical Neglect of Dis. Infant	1
Oral Sex/Mental Injury	42/2	Oral Sex/Mental Injury	37/0
Poison/Noxious	14	Poison/Noxious	16
Pornography	15	Pornography	15
Sexual Contact	352	Sexual Contact	292
Sexual Exploitation	27	Sexual Exploitation	31
Sexual Penetration	145	Sexual Penetration	116
Voyeurism	2	Voyeurism	8
Subdural Hematoma	0	Subdural Hematoma	2
Suffocation	34	Suffocation	27
Threat of Harm	28	Threat of Harm	14
Total for Month	783	Total for Month	668
OCTOBER 2011		NOVEMBER 2011	
<i>Allegation Title</i>	<i># Reported</i>	<i>Allegation Title</i>	<i># Reported</i>
Bruises Cuts & Welts	10	Bruises Cuts & Welts	6
Abuse with a Deadly Weapon	4	Abuse with a Deadly Weapon	7
Bone Fractures	7	Bone Fractures	8
Brain Damage/Skull Fracture	3	Brain Damage/Skull Fracture	1
Burns/Scalding	17	Burns/Scalding	13
Failure to Protect/Thrive	25	Failure to Protect/Thrive	0
Immersion/ DEATH	1/1	Immersion/ DEATH	0/1
Indecent Exposure	15	Indecent Exposure	20
Internal Injuries	1	Internal Injuries	0
Juvenile Aggressor	1	Juvenile Aggressor	2
Malnutrition	0	Malnutrition	1
Medical Neglect of Dis. Infant	0	Medical Neglect of Dis. Infant	0
Oral Sex/ Mental Injury	30/2	Oral Sex / Mental Injury	43/2
Poison/Noxious	12	Poison/Noxious	10
Pornography	20	Pornography	16
Sexual Contact	301	Sexual Contact	368
Sexual Exploitation	16	Sexual Exploitation	11
Sexual Penetration	125	Sexual Penetration	146
Voyeurism	2	Voyeurism	1
Subdural Hematoma	4	Subdural Hematoma	1
Suffocation	27	Suffocation	28
Threat of Harm	21	Threat of Harm	13
Total for Month	645	Total for Month	698

ABUSE ALLEGATIONS REPORTED BY TYPE

DECEMBER 2011		JANUARY 2012	
<i>Allegation Title</i>	<i># Reported</i>	<i>Allegation Title</i>	<i># Reported</i>
Bruises Cuts & Welts	10	Bruises Cuts & Welts	9
Abuse with a Deadly Weapon	4	Abuse with a Deadly Weapon	5
Bone Fractures	16	Bone Fractures	16
Brain Damage/Skull Fracture	2	Brain Damage/Skull Fracture	2
Burns/Scalding	11	Burns/Scalding	14
Failure to Protect/Thrive	19/1	Failure to Protect/Thrive	31/2
Immersion/ DEATH	0/5	Immersion/ DEATH	0/2
Indecent Exposure	13	Indecent Exposure	22
Internal Injuries	0	Internal Injuries	1
Juvenile Aggressor	1	Juvenile Aggressor	1
Malnutrition	0	Malnutrition	0
Medical Neglect of Dis. Infant	0	Medical Neglect of Dis. Infant	0
Oral Sex / Mental Injury	32/2	Oral Sex/ Mental Injury	45/2
Poison/Noxious	4	Poison/Noxious	10
Pornography	10	Pornography	25
Sexual Contact	252	Sexual Contact	381
Sexual Exploitation	14	Sexual Exploitation	18
Sexual Penetration	109	Sexual Penetration	147
Voyeurism	9	Voyeurism	2
Subdural Hematoma	2	Subdural Hematoma	2
Suffocation	19	Suffocation	25
Threat of Harm	14	Threat of Harm	14
Total for Month	549	Total for Month	774
FEBRUARY 2012		MARCH 2012	
<i>Allegation Title</i>	<i># Reported</i>	<i>Allegation Title</i>	<i># Reported</i>
Bruises Cuts & Welts	17	Bruises Cuts & Welts	12
Abuse with a Deadly Weapon	9	Abuse with a Deadly Weapon	7
Bone Fractures	9	Bone Fractures	6
Brain Damage/Skull Fracture	4	Brain Damage/Skull Fracture	3
Burns/Scalding	17	Burns/Scalding	14
Failure to Protect/Thrive	22/0	Failure to Protect/Thrive	16/1
Immersion/ DEATH	0/2	Immersion/ DEATH	2/4
Indecent Exposure	14	Indecent Exposure	22
Internal Injuries	0	Internal Injuries	1
Juvenile Aggressor	0	Juvenile Aggressor	0
Malnutrition	0	Malnutrition	0
Medical Neglect of Dis. Infant	0	Medical Neglect of Dis. Infant	0
Oral Sex / Mental Injury	34/2	Oral Sex / Mental Injury	42/2
Poison/Noxious	8	Poison/Noxious	9
Pornography	18	Pornography	18
Sexual Contact	368	Sexual Contact	348
Sexual Exploitation	11	Sexual Exploitation	16
Sexual Penetration	135	Sexual Penetration	140
Voyeurism	9	Voyeurism	5
Subdural Hematoma	2	Subdural Hematoma	0
Suffocation	33	Suffocation	29
Threat of Harm	15	Threat of Harm	15
Total for Month	729	Total for Month	712

CHART A (JANUARY 12)
ARKANSAS STATE POLICE CRIMES AGAINST CHILDREN DIVISION
CIVILIAN INVESTIGATIONS (CI)

	ADMINISTRATOR - DEBBIE ROARK	REPORTS ASSIGNED	REPORTS CLOSED	TRUE REPORTS	INACTIVE REPORTS	PENDING INVESTIGATIONS	INITIATED TIMELY	COMPLETED TIMELY
AREA 1 INVESTIGATORS								
1	Belinda Reynolds	9	7	5	0	6	9	7
2	Karis Chastain	9	16	1	0	14	9	9
3	Kimberly Pierce	10	9	3	0	15	10	9
4	Dale Chiddister	10	9	6	0	12	10	6
5	Tracie Moreland	8	10	1	0	11	8	6
6	Tiffany Kurkowski	7	4	0	0	5	7	4
7	Bob Willis	10	6	3	0	6	10	5
8	Jim Kibat	9	13	7	0	14	9	7
	Ken Hunt - Supervisor	0	0	0	0	0	0	0
	TOTAL	72	74	26	0	83	72	53
AREA 2 INVESTIGATORS								
1	Sheri Buckner	13	6	3	0	18	12	2
2	Sam Dorough	14	11	4	0	12	14	10
3	Dana Dusha	13	8	5	0	19	13	6
4	Tara Flute	11	8	4	1	17	11	6
5	Christy Jackson	1	6	2	0	0	1	6
6	Tamara Jones	11	10	3	0	15	11	8
7	Deanna Lacefield	14	7	3	0	16	14	4
	Teri Ward - Supervisor	0	0	0	0	0	0	0
	TOTAL	77	56	24	1	97	76	42
AREA 3 INVESTIGATORS								
1	Jannette Cooper	9	5	2	0	15	9	5
2	Jim Milam	11	8	2	0	11	11	3
3	Kevin Estes	9	9	5	0	13	9	9
4	Brooke Junkerfeld	0	8	4	0	1	0	0
5	Jamie Nesbitt	10	6	2	0	14	10	3
6	Misty Fowler	9	5	0	0	15	9	1
	J. R. Davenport - Supervisor	0	0	0	0	0	0	0
	TOTAL	48	41	15	0	69	48	21

**CHART A (JANUARY 12)
 ARKANSAS STATE POLICE CRIMES AGAINST CHILDREN DIVISION
 CIVILIAN INVESTIGATIONS (CI)**

	REPORTS ASSIGNED	REPORTS CLOSED	TRUE REPORTS	INACTIVE REPORTS	PENDING INVESTIGATIONS	INITIATED TIMELY	COMPLETED TIMELY
AREA 4 INVESTIGATORS							
1 Charles Anderson	8	8	4	0	5	8	8
2 Garrick Rogers	8	6	1	0	2	8	6
3 Patty Hibbs	12	7	4	0	10	12	7
4 Mary Pifer	10	6	2	0	9	10	6
5 Tonya Tackett	9	7	3	0	6	9	7
6 Daryl Tidwell	9	5	1	0	9	9	5
7 Niya Shaw	8	5	1	0	9	8	5
Matt Caton - Supervisor	0	0	0	0	0	0	0
TOTAL	64	44	16	0	50	64	44
AREA 5 INVESTIGATORS							
1 Tammy Dulaney	11	7	3	0	11	11	7
2 Mike Hall	7	5	2	0	14	7	1
3 Chris Lewis	7	4	0	0	7	7	3
4 Tim Lipscomb	7	7	1	0	13	7	4
5 Larry Melville	9	4	1	1	13	9	1
6 Darla Thompson	7	7	4	1	7	7	7
7 Kim Warner	9	9	2	0	9	9	7
Willene Slavik - Supervisor	0	0	0	0	0	0	0
TOTAL	57	43	13	2	74	57	30
AREA 6 INVESTIGATORS							
1 Renee Owens	0	0	0	0	0	0	0
2 Rebecca Underwood	8	0	0	0	8	8	0
3 Jamie Moore	12	7	2	0	14	12	3
4 Kerri Fowler	12	7	5	0	11	12	5
5 Andy Willis	14	9	3	0	24	14	9
6 Lakesha White	14	7	2	0	14	14	7
7 Sherrice Vales	12	13	3	0	12	12	5
8 Lesley Faulkner	13	7	3	0	16	13	6
Lea Ann Vanaman - Supervisor	0	0	0	0	1	0	0
TOTAL	85	50	18	0	100	85	35

CHART A (JANUARY 12)
 ARKANSAS STATE POLICE CRIMES AGAINST CHILDREN DIVISION
 CIVILIAN INVESTIGATIONS (CI)

	REPORTS ASSIGNED	REPORTS CLOSED	TRUE REPORTS	INACTIVE REPORTS	PENDING INVESTIGATIONS	INITIATED TIMELY	COMPLETED TIMELY
AREA 7 INVESTIGATORS							
1 Stephanie Britton	7	3	1	0	7	7	3
2 Kay Childs-Travis	6	7	5	0	7	6	2
3 Anita Hammons	6	7	2	0	4	6	6
4 Dorris Hill	5	4	2	0	6	5	3
5 Trinia Isaac	3	4	1	0	5	3	4
6 Kim Owens	6	6	3	0	7	6	6
7 Iclephine Sykes	8	7	5	0	8	8	4
Phyllis Newton - Supervisor	0	0	0	0	0	0	0
TOTAL	41	38	19	0	44	41	28
AREA 8 INVESTIGATORS							
1 Alisha Gorden	13	6	2	0	17	12	3
2 David Hampton	5	5	1	0	14	5	5
3 Emily Hampton	7	4	2	0	12	7	3
4 Kathy House	7	2	1	0	12	7	0
5 Dough Shuffield	1	3	2	0	11	1	0
6 Kristi Williamson	11	6	1	0	11	11	6
Laurie Alexander - Supervisor	0	0	0	0	0	0	0
TOTAL	44	26	9	0	77	43	17
AREA 9 INVESTIGATORS							
1 Zack Barnes	11	8	2	0	10	11	7
2 Amanda Clay-Chaney	8	6	4	0	10	8	5
3 Shelley Cousins	10	5	4	0	22	10	3
4 Sara Longin	8	7	3	0	14	8	5
5 Suzie Roberts	1	0	0	0	1	1	0
6 Linda Powell	12	9	4	0	17	12	7
7 Tollece Sutter	8	8	6	0	15	8	1
Michelle Gatlin - Supervisor	0	0	0	0	0	0	0
TOTAL	58	43	23	0	89	58	28
UNIT TOTAL	546	415	163	3	683	544	298

CHART A (FEBRUARY12)
ARKANSAS STATE POLICE CRIMES AGAINST CHILDREN DIVISION
CIVILIAN INVESTIGATIONS (CI)

	ADMINISTRATOR - Debbie Roark	REPORTS ASSIGNED	REPORTS CLOSED	TRUE REPORTS	INACTIVE REPORTS	PENDING INVESTIGATIONS	INITIATED TIMELY	COMPLETED TIMELY
AREA 1 INVESTIGATORS								
1	Belinda Reynolds	7	8	4	0	5	7	8
2	Karis Chastain	10	8	5	0	16	10	7
3	Kimberly Pierce	8	12	2	0	11	8	10
4	Dale Chiddister	8	8	4	0	12	8	5
5	Tracie Moreland	10	14	9	0	7	10	11
6	Tiffany Kurkowski	10	7	3	0	8	10	6
7	Bob Willis	8	6	2	0	8	8	5
8	Jim Kibat	7	11	4	0	10	7	8
	Ken Hunt - Supervisor	0	0	0	0	0	0	0
	TOTAL	68	74	33	0	77	68	60
AREA 2 INVESTIGATORS								
1	Sheri Buckner	10	10	5	0	18	10	5
2	Sam Dorrough	13	15	6	0	10	13	11
3	Dana Dusha	11	16	10	0	14	11	13
4	Tara Flute	10	7	2	0	20	10	7
5	Christy Jackson	0	0	0	0	0	0	0
6	Tamara Jones	11	10	6	0	16	11	6
7	Deanna Lacefield	9	13	6	0	12	9	13
	Teri Ward - Supervisor	0	0	0	0	0	0	0
	TOTAL	64	71	35	0	90	64	55
AREA 3 INVESTIGATORS								
1	Jannette Cooper	16	10	3	0	23	16	10
2	Jim Millam	8	6	2	0	13	8	6
3	Kevin Estes	12	11	3	0	14	12	6
4	Jamie Nesbitt	15	8	4	0	22	15	3
5	Misty Fowler	11	8	3	0	18	11	4
6	Cassandra LaBahn	0	0	0	0	0	0	0
	J. R. Davenport - Supervisor	0	0	0	0	0	0	0
	TOTAL	62	43	15	0	90	62	29

**CHART A (FEBRUARY12)
 ARKANSAS STATE POLICE CRIMES AGAINST CHILDREN DIVISION
 CIVILIAN INVESTIGATIONS (CI)**

	REPORTS ASSIGNED	REPORTS CLOSED	TRUE REPORTS	INACTIVE REPORTS	PENDING INVESTIGATIONS	INITIATED TIMELY	COMPLETED TIMELY
AREA 4 INVESTIGATORS							
1 Charles Anderson	9	9	5	0	6	9	9
2 Garrick Rogers	8	8	2	0	8	8	8
3 Patty Hibbs	8	10	10	0	8	8	9
4 Mary Pifer	8	11	2	0	5	8	11
5 Tonya Tackett	9	5	0	0	10	9	5
6 Daryl Tidwell	10	9	4	0	10	10	9
7 Niya Shaw	9	8	6	0	8	9	8
Matt Caton - Supervisor	0	0	0	0	0	0	0
TOTAL	61	60	29	0	55	61	59
AREA 5 INVESTIGATORS							
1 Tammy Dulaney	13	11	2	0	13	13	10
2 Mike Hall	9	5	1	0	17	9	3
3 Chris Lewis	9	7	2	0	9	9	7
4 Tim Lipscomb	7	5	0	0	15	7	5
5 Larry Melville	11	8	1	0	16	11	6
6 Darla Thompson	9	5	2	0	11	9	5
7 Kim Warner	9	9	0	0	9	9	7
Willene Slavik - Supervisor	0	0	0	0	0	0	0
TOTAL	67	50	8	0	90	67	43
AREA 6 INVESTIGATORS							
1 Renee Owens	0	0	0	0	0	0	0
2 Rebecca Underwood	9	8	2	0	9	9	8
3 Jamie Moore	10	11	5	1	12	10	7
4 Kerri Fowler	11	10	3	0	12	11	10
5 Andy Willis	9	13	6	0	18	9	10
6 Lakesha White	10	12	4	0	12	10	11
7 Sherrice Vales	8	12	7	0	8	7	10
8 Lesley Faulkner	7	14	8	0	9	7	10
Lea Ann Vanaman - Supervisor	0	1	0	0	0	0	0
TOTAL	64	81	35	1	80	63	66

CHART A (FEBRUARY12)
 ARKANSAS STATE POLICE CRIMES AGAINST CHILDREN DIVISION
 CIVILIAN INVESTIGATIONS (CI)

	REPORTS ASSIGNED	REPORTS CLOSED	TRUE REPORTS	INACTIVE REPORTS	PENDING INVESTIGATIONS	INITIATED TIMELY	COMPLETED TIMELY
AREA 7 INVESTIGATORS							
1 Stephanie Britton	6	7	2	0	6	6	7
2 Kay Childs-Travis	3	6	3	0	4	3	5
3 Anita Hammons	3	1	0	0	6	3	1
4 Dorris Hill	5	5	3	0	6	5	1
5 Trinia Isaac	5	4	1	0	6	5	3
6 Kim Owens	5	5	2	0	7	5	5
7 Cleophine Sykes	3	6	4	0	5	3	3
Phyllis Newton - Supervisor	0	0	0	0	0	0	0
TOTAL	30	34	19	0	40	30	25
AREA 8 INVESTIGATORS							
1 Alisa Gorden	9	13	6	0	13	9	11
2 David Hampton	6	6	3	0	14	6	2
3 Emily Hampton	5	4	2	0	13	5	4
4 Kathy House	10	9	3	0	13	9	3
5 Dough Shuffield	0	0	0	0	10	0	0
6 Kristi Williamson	6	7	4	0	8	6	6
Laurie Alexander - Supervisor	0	0	0	0	0	0	0
TOTAL	36	39	18	0	71	35	26
AREA 9 INVESTIGATORS							
1 Zack Barnes	12	11	3	0	12	12	10
2 Amanda Clay-Chaney	8	8	4	0	9	8	6
3 Shelley Cousins	10	10	5	0	20	10	6
4 Sara Longtin	8	11	7	0	11	8	6
5 Suzie Roberts	11	1	0	0	11	11	1
6 Linda Powell	11	13	6	0	16	11	10
7 Tollece Sutter	11	15	7	0	13	11	9
Michelle Gatlin- Supervisor	0	0	0	0	0	0	0
TOTAL	71	69	32	0	92	71	48
UNIT TOTAL	523	521	224	1	685	521	411

CHART A (MARCH 12)
ARKANSAS STATE POLICE CRIMES AGAINST CHILDREN DIVISION
CIVILIAN INVESTIGATIONS (CI)

	ADMINISTRATOR	REPORTS ASSIGNED	REPORTS CLOSED	TRUE REPORTS	INACTIVE REPORTS	PENDING INVESTIGATIONS	INITIATED TIMELY	COMPLETED TIMELY
AREA 1 INVESTIGATORS								
1	Belinda Reynolds	7	9	2	0	3	7	9
2	Karis Chastain	10	13	5	0	12	10	8
3	Kimberly Pierce	10	7	2	0	14	10	3
4	Dale Chiddister	8	11	4	0	9	8	8
5	Tracie Moreland	10	7	4	0	10	10	7
6	Tiffany Kurkowski	10	5	1	0	13	10	5
7	Bob Willis	6	9	6	0	7	6	8
8	Jim Kibat	9	14	2	0	5	9	10
	Ken Hunt - Supervisor	0	0	0	0	0	0	0
	TOTAL	70	75	26	0	73	70	58
AREA 2 INVESTIGATORS								
1	Sheri Buckner	7	13	3	0	12	7	8
2	Sam Dorrough	7	7	2	0	10	7	6
3	Dana Dusha	9	10	3	0	13	9	7
4	Tara Flute	7	12	3	0	15	7	7
5	Christy Jackson	10	2	1	0	8	10	2
6	Tamara Jones	10	13	7	0	13	10	9
7	Deanna Lacefield	6	10	4	0	8	6	9
	Teri Ward - Supervisor	0	0	0	0	0	0	0
	TOTAL	56	67	23	0	79	56	48
AREA 3 INVESTIGATORS								
1	Jannette Cooper	9	11	6	0	21	9	10
2	Jim Milam	7	5	5	0	13	7	1
3	Kevin Estes	0	0	0	0	0	0	0
4	Jamie Nesbitt	16	13	6	0	16	16	9
5	Misty Fowler	12	17	6	0	16	12	8
6	Cassandra LaBahn	12	13	7	0	16	12	7
	J. R. Davenport - Supervisor	0	0	0	0	0	0	0
	TOTAL	56	59	30	0	82	56	35

**CHART A (MARCH 12)
 ARKANSAS STATE POLICE CRIMES AGAINST CHILDREN DIVISION
 CIVILIAN INVESTIGATIONS (CI)**

	REPORTS ASSIGNED	REPORTS CLOSED	TRUE REPORTS	INACTIVE REPORTS	PENDING INVESTIGATIONS	INITIATED TIMELY	COMPLETED TIMELY
AREA 4 INVESTIGATORS							
1 Charles Anderson	11	9	4	0	9	11	9
2 Garrick Rogers	11	10	5	0	10	11	10
3 Patty Hibbs	12	9	4	0	8	12	9
4 Mary Pifer	10	6	2	0	10	10	6
5 Tonya Tackett	10	11	3	0	9	10	11
6 Daryl Tidwell	11	10	2	0	10	11	10
7 Niya Shaw	6	11	8	0	3	6	11
Matt Caton - Supervisor	0	0	0	0	0	0	0
TOTAL	71	66	28	0	59	71	66
AREA 5 INVESTIGATORS							
1 Tammy Dulaney	10	12	3	0	10	10	9
2 Mike Hall	6	8	1	0	17	6	0
3 Chris Lewis	7	8	3	0	8	7	6
4 Tim Lipscomb	8	5	1	0	17	8	4
5 Larry Melville	7	7	1	0	16	7	4
6 Darla Thompson	8	8	3	0	12	8	8
7 Kim Warner	8	8	2	0	9	8	6
Willene Slavik - Supervisor	0	0	0	0	0	0	0
TOTAL	54	56	14	0	89	54	37
AREA 6 INVESTIGATORS							
1 Renee Owens	5	1	1	0	0	5	1
2 Rebecca Underwood	8	9	3	0	9	8	9
3 Jamie Moore	10	7	1	1	15	10	7
4 Kerri Fowler	7	11	7	0	8	7	11
5 Andy Willis	11	13	5	0	17	11	11
6 Lakesha White	9	13	4	0	8	9	11
7 Sherrice Vales	9	9	5	0	8	9	9
8 Lesley Faulkner	7	7	4	0	9	7	7
Lea Ann Vanaman - Supervisor	0	0	0	0	0	0	0
TOTAL	66	70	35	1	74	66	66

CHART A (MARCH 12)
 ARKANSAS STATE POLICE CRIMES AGAINST CHILDREN DIVISION
 CIVILIAN INVESTIGATIONS (CI)

	REPORTS ASSIGNED	REPORTS CLOSED	TRUE REPORTS	INACTIVE REPORTS	PENDING INVESTIGATIONS	INITIATED TIMELY	COMPLETED TIMELY
AREA 7 INVESTIGATORS							
1 Stephanie Britton	8	5	3	0	9	8	5
2 Kay Childs-Travis	8	3	2	0	9	8	1
3 Anita Hammons	10	5	4	0	11	10	2
4 Dorris Hill	7	6	5	0	7	7	5
5 Trinia Isaac	10	4	3	0	11	10	3
6 Kim Owens	7	6	3	0	8	7	5
7 Icephine Sykes	6	3	3	0	8	6	1
Phyllis Newton - Supervisor	0	0	0	0	0	0	0
TOTAL	56	32	23	0	63	56	22
AREA 8 INVESTIGATORS							
1 Alisa Gorden	6	8	2	0	12	6	7
2 David Hampton	6	11	8	0	9	6	6
3 Emily Hampton	5	5	1	0	13	5	4
4 Kathy House	6	7	5	0	11	6	5
5 Dough Shuffield	0	0	0	0	0	0	0
6 Kristi Williamson	8	11	5	0	7	8	10
Laurie Alexander - Supervisor	0	0	0	0	0	0	0
TOTAL	31	42	21	0	52	31	32
AREA 9 INVESTIGATORS							
1 Zack Barnes	8	9	5	0	11	7	7
2 Amanda Clay-Chaney	9	9	4	0	8	9	9
3 Shelley Cousins	7	12	4	0	16	7	5
4 Sara Longfin	8	6	3	0	12	8	6
5 Suzie Roberts	7	7	4	0	11	7	6
6 Linda Powell	12	10	7	0	19	12	7
7 Tollece Sutter	5	3	1	0	15	5	3
Michelle Gatlin- Supervisor	0	0	0	0	0	0	0
TOTAL	56	56	28	0	92	55	43
UNIT TOTAL	516	523	228	1	663	521	407