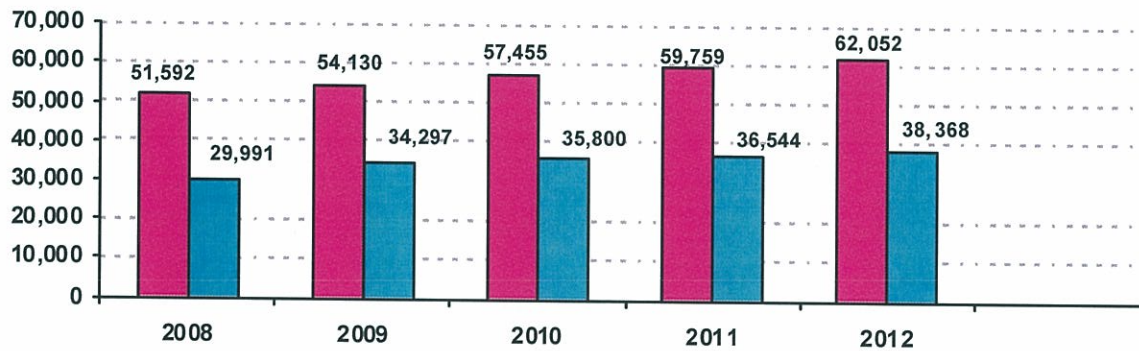


# ARKANSAS STATE POLICE CRIMES AGAINST CHILDREN DIVISION

## ANNUAL REPORT 2012

Child Abuse Hot Line operators in the Crimes Against Children Division (CACD) of the Arkansas State Police received 62,052 telephone calls in the year 2012. Of these calls 38,368 were accepted as legally valid allegations of abuse or neglect. They were assigned for investigation to CACD investigators or to the Arkansas Department of Human Services' (DHS) Division of Children and Family Services (DCFS).

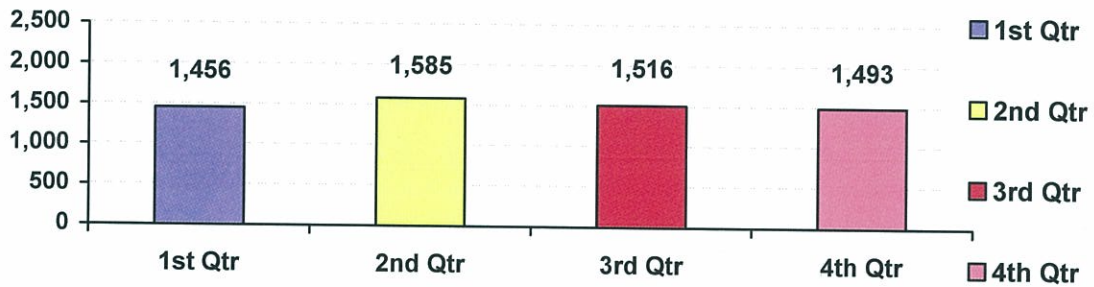
The Hot Line Section – which operates 24-hours a day, 7-days a week – is authorized one (1) Division Commander, one (1) Administrator four (4) Supervisors and twenty seven (27) Hotline Operators. This section operated with an average of 24 operators during the year.



	2008	2009	2010	2011	2012
■ Calls Received	51,592	54,130	57,455	59,759	62,052
■ Accepted Reports	29,991	34,297	35,800	36,544	38,368

The reports accepted by the Hot Line are divided into categories for investigation, pursuant to an agreement with DHS. This resulted in **6,050** cases being investigated by the CACD's Investigation section in 2012. Each report may contain multiple allegations.

**Number of Investigations Assigned**



The types and number of Priority I allegations were:

- Abandonment – 35
- Abuse w/a deadly weapon – 66
- Bone fracture – 130
- Brain damage/skull fracture – 39
- Burns/scalding – 211
- Cuts, bruises, welts – 146
- Death - 36
- Failure to protect – 224
- Failure to thrive – 19
- Immersion – 17
- Indecent exposure – 257
- Internal injuries – 3
- Juvenile aggressor - 23
- Malnutrition – 4
- Med. neg. of Dis. Infant – 0
- Mental Injury- 52
- Oral sex – 437
- Poison/noxious substance – 113
- Pornography – 238
- Sexual contact – 3,849
- Sexual exploitation – 211
- Sexual penetration – 1,596
- Voyeurism- 72
- Subdural hematoma – 21
- Suffocation – 285
- Threat of harm – 173

Of the total number of Priority I allegations, 6,588 (80%) involved sexual abuse, indecent exposure and pornography.

CACD investigators closed 5,768 cases in 2012. Of the closed cases, 2,464 (43%) were found to be 'true'.

The investigative determination of 'true' means there was a preponderance of evidence that indicated the allegation(s) was true. An 'unsubstantiated' finding means the evidence was insufficient to support the allegation(s). Investigations closed with a determination of 'true' were reported to the appropriate prosecuting attorney.

The Investigations Section is authorized 63 civilian investigators, 10 Supervisors, 1 Administrator and 1 Division Commander. This section operated with an average of 62 investigators during the year 2012.

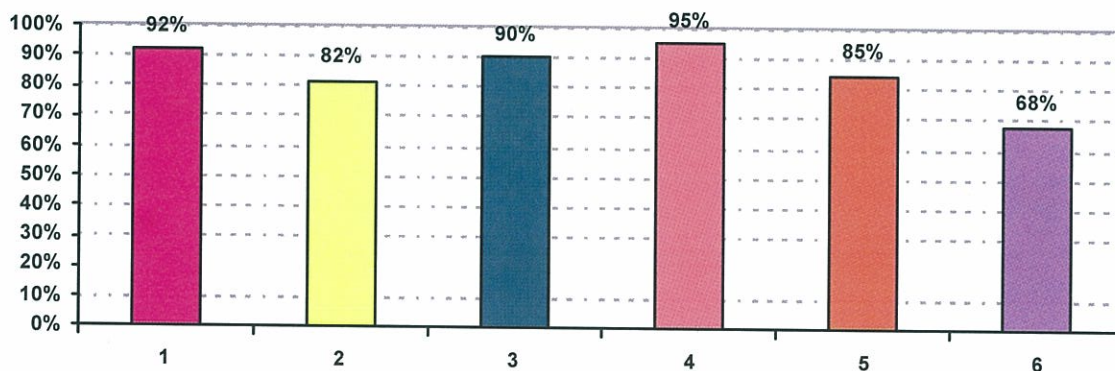
The CACD Investigations Section is evaluated on six performance indicators of compliance with Angela R. requirements, which were spelled out in a consent decree in the 1990s during federal court proceedings. They also are a part of an agreement between CACD and DHS.

The indicators are:

1. The alleged victim(s) in Priority I reports is seen by the investigator within 24 hours.
2. The alleged victim(s) in Priority II reports is seen by the investigator within 72 hours.
3. All children in the home are seen during the investigation.
4. The alleged victim(s) is interviewed (or observed) outside the presence of the alleged offender.
5. Parents/caretakers are interviewed in all investigations.
6. Investigations are concluded within 30 days of receipt of the allegation.

By agreement with DHS, CACD is required to meet a minimum of 85% compliance in each performance indicator. The following chart shows the average compliance for the year 2012. The line numbers above are used as identifiers.

#### INDICATORS





## MEMORANDUM

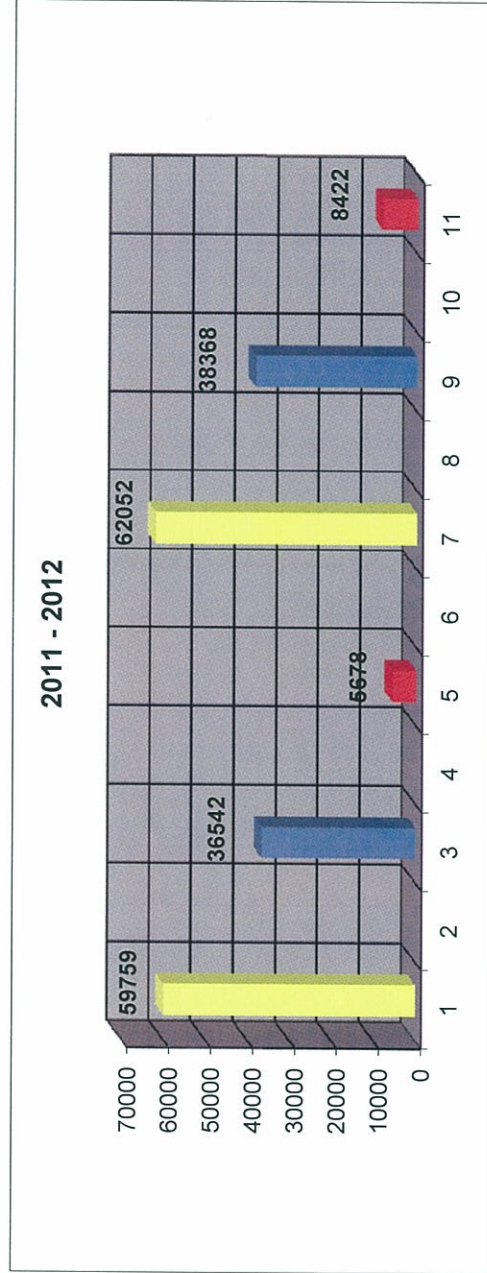
**TO:** Captain Ron Stayton, Division Commander  
**FROM:** Gary Glisson, Hotline Administrator  
**RE:** 2012 Annual Hotline Statistics  
**DATE:** January 19, 2013

RECEIVED BY:  
Phone 53,630  
Fax, E-Mail & Other 8,422  
TOTAL CONTACTS FOR 2012 62,052

DISPOSITION:  
Assigned for Investigation 38,368  
Information Only 10,239  
Referred for Assessment (R/A) 1,453  
Differential Response (DR) 183  
Screen Outs 11,809  
TOTAL 62,052

REFERRALS SCREENED OUT BELOW:  
Not Valid 7,388  
Duplicate 2,247  
Unable to Locate 448  
Referred to another State 570  
Alleged Victim over 18 290  
Alleged Offender not a Caretaker 448  
Other 418  
TOTAL 11,809

	2011			2012		
	CALLS RECEIVED	ACCEPTED	FAXES	TOTAL HOTLINE	ACCEPTED	FAXES
JAN	4686	2923	400	5166	3366	598
FEB	4273	2722	393	5139	3367	744
MARCH	5172	3336	535	5480	3462	682
APRIL	5279	3351	484	5410	3471	754
MAY	5145	3098	537	5614	3480	819
JUNE	4717	2671	381	4742	2725	501
JULY	4836	2702	367	4814	2834	524
AUGUST	5310	3175	448	5398	3234	629
SEPT	5359	3394	525	5054	3288	789
OCT	5182	3231	555	5737	3584	1013
NOV	5199	3191	545	5026	3036	727
DEC	4601	2748	508	4472	2521	642
<b>TOTAL</b>	<b>59759</b>	<b>36542</b>	<b>5678</b>	<b>62052</b>	<b>38368</b>	<b>8422</b>



2012 ANNUAL STATS

	JAN	FEB	MAR	APRIL	MAY	JUNE	JULY	AUG	SEPT	OCT	NOV	DEC	TOTAL
TOT 800	4568	4395	4798	4656	4,795	4241	4290	4769	4265	4724	4299	3830	53630
TOT OTHER	598	744	682	754	819	501	524	629	789	1013	727	642	8422
TOT CONTACTS	5166	5139	5480	5410	5614	4742	4814	5398	5054	5737	5026	4472	62052
ACC	3366	3367	3462	3471	3480	2725	2834	3234	3288	3584	3036	2521	38368
SO	849	837	932	970	1035	896	963	1132	961	1232	1038	964	11809
R/A	98	129	113	116	169	95	110	120	120	150	131	102	1453
DR	0	0	0	0	0	0	0	0	0	55	58	70	183
MISC/OTHER	853	806	973	853	930	1026	907	912	685	716	763	815	10239
TOTAL CONTACTS	5166	5139	5480	5410	5614	4742	4814	5398	5054	5737	5026	4472	62052
Child Death	2	2	4	3	4	3	6	6	2	1	2	1	36
Duplicate Ref	161	187	198	220	190	158	168	205	224	264	168	134	2277
Garrett's Law	63	66	60	50	45	52	57	54	61	71	62	0	641
MDT's	781	946	987	1002	1028	826	911	913	939	1052	882	0	10267
Spanish Ref	7	3	5	0	1	3	5	6	6	2	2	0	40

**Total Others** - Includes Referrals received by Fax, E-Mail, Walk-In's, Multiples

**ACC** - All Referrals that were keyed into CHRIS and accepted for investigation

**SO** - All Referrals that were keyed into CHRIS but not accepted for investigation

**R/A** - Total Referrals assigned to DCFS for assessment only

**MISC** - Total number of miscellaneous to the 1-800 that do not result in an accepted, screen out or R/A

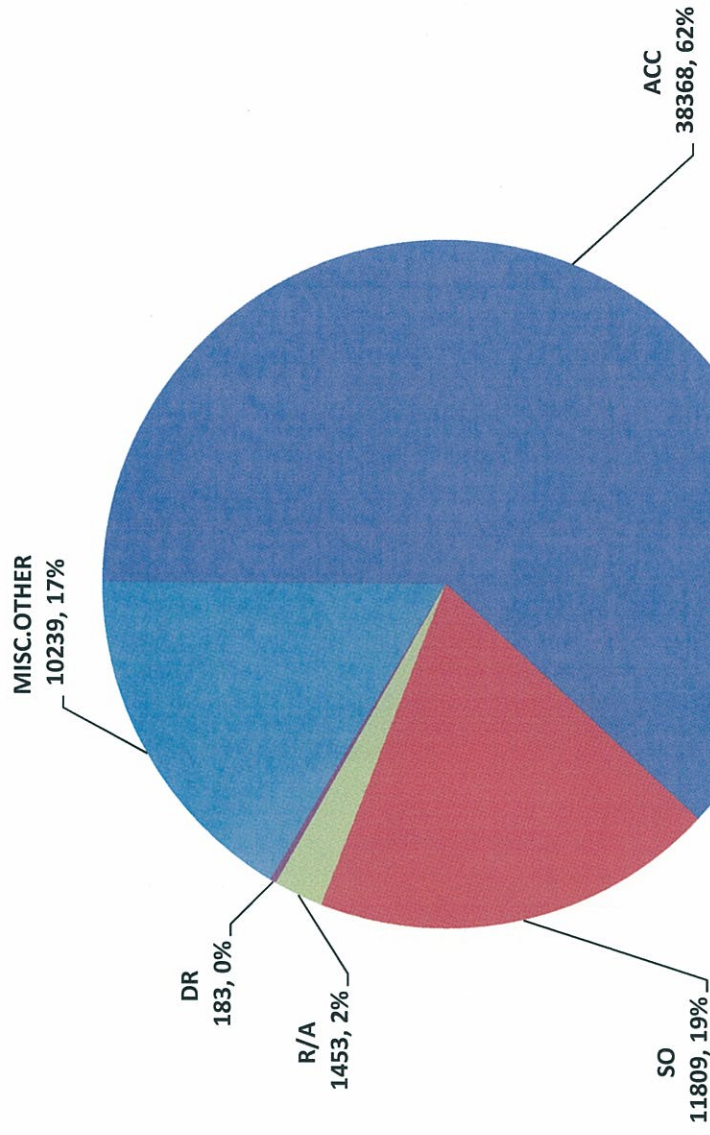
**Child Death** - Total number of child death reports taken as a result of Abuse or Neglect

**Duplicate Referrals** - Referrals that contain acceptable allegations but had been already been reported and accepted for investigation in a previous referral.

**MDT's** - Severe maltreatment notifications provided to MDT coordinators for Priority I reports from DCFS/CACD

**Spanish Referrals** - Intakes that require an interpreter.

2012





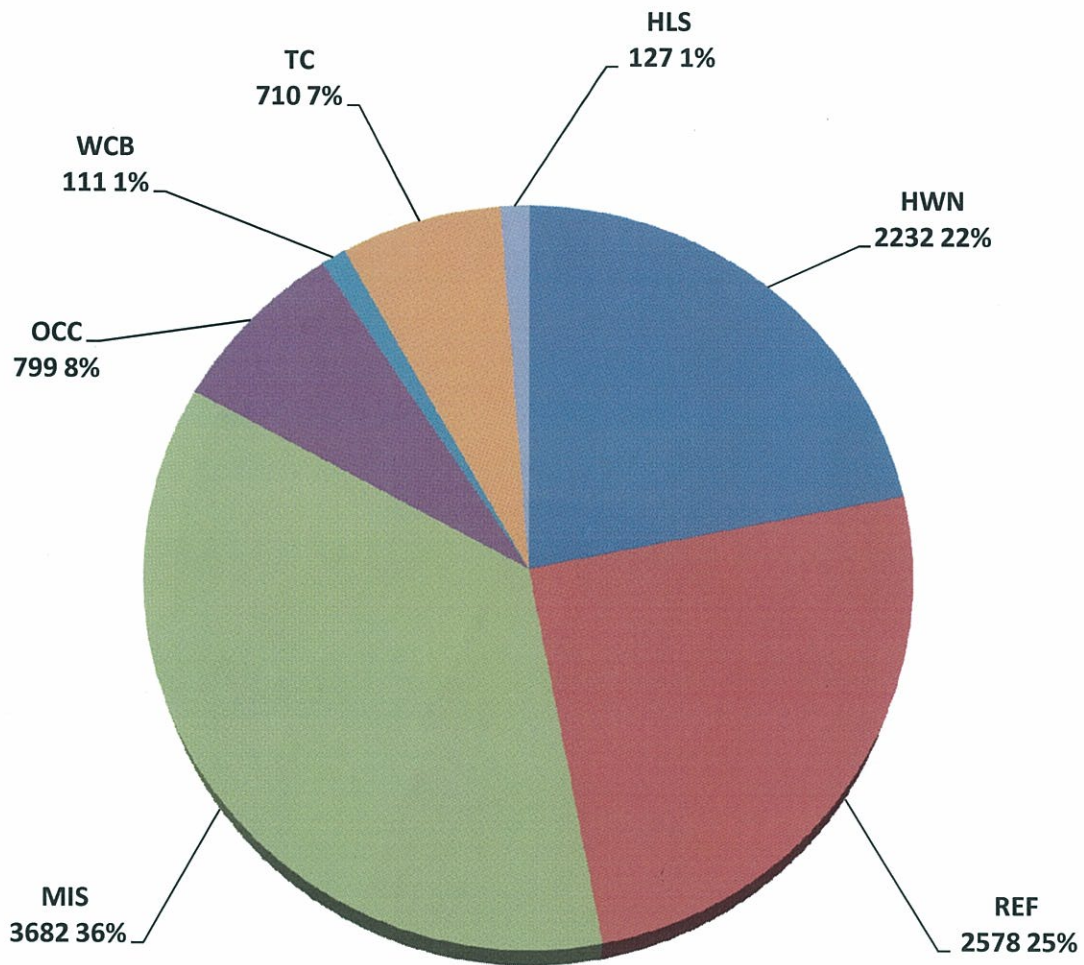
## 2012 Operator Stats

OPERATOR	JAN	FEB	MAR	APR	MAY	JUNE	JULY	AUG	SEPT	OCT	NOV	DEC	TOTAL
7A TO 330P													
KENNEDY	266	275	269	253	241	243	250	259	280	331	254	210	3131
MACK (SUPV)	8	43	7	21	45	2	0	26	25	10	0	3	190
WHITLOCK	245	268	308	252	302	261	236	246	268	318	259	75	3038
8A TO 430P													
GLISSON (ADMIN)	0	0	0	0	0	0	0	0	6	0	0	3	9
HARRIS	398	383	340	454	429	367	377	233					2981
HART	178	161	212	209	274	218	229	299	244	187	306	217	2734
LEWIS, P.	296	260	272	267	129								1224
MAYS	0	81	197	201	26								505
OLIPHANT										270	266	249	785
PAGE	249	150	242	264	228	244	252	252	293	281	307	234	2996
STENHOUSE	266	257	229	184	241	205	249	203	200	241	131	218	2624
9A TO 630P													
DENNIS (SUPV)	0	0	0	0	0	0	0	1	0	0	0	0	1
ERVIN	211	222	228	185	248	157	248	238	232	240	209	176	2594
KING, V	181	262	237	199	255	175	270	279	231	299	264	237	2889
NEELEY	236	260	228	249	353	305	289	326	283	255	205	223	3212
12P TO 830P													
LEWIS, V.	237	191	220	205	208	215	38						1314
JOHNSON, WHITNEY							32	233	223	214	177	173	1052
NOLTE	190	169	195	217	220	197	229	151	260	212	0	92	2132
3P TO 1130P													
ROBERTSON	167	125	165	183	167	67	0	161	249	243	258	197	1982
FINNEGAN	59	176	213	247	256	165	224	232	184	243	121	200	2320
DULANEY	203	170	184	156	92	151	219	207	232	201	149	169	2133
FRANKLIN	165	128	144	156	215	185	189	193	9				1384
JACKSON, CHARIS	221	188	168	213	209	226	90	232	281	284	225	213	2550
JOHNSTON	145	140	179	134	220	187	201	253	189	209	159	142	2158
GARDNER							19	213	173	139	160	119	823
KING, CRYSTAL										238	219	211	668
KISER									92	186	172	147	597
LIGGINS	179	171	171	208	217	209	229	223	216	230	199	164	2416
LOUDEN	189	171	191	177	173	186	117	168	231	250	262	191	2306
MERTENS										139	243	190	572
MORGAN/SIMMON	197	224	208	77									706
PRICHARD (SUPV)	30	65	33	55	94	78	67	63	130	102	31	64	812
SPEER	235	213	225	203	226	240	276	69					1687
YOUNGBLOOD	157	166	125	146	202	162	178	176	62	0	74		1448
WILSON							22	158	146	124	136	116	702
PROTHEROE	96	68	97	87	133	104	101	125	119	85	88	83	1186
11P TO 730A													
AMIN (SUPV)	1	0	2	13	8	1	4	0	1	3	0	11	44
JACKSON, CHARL	98	76	93	113	111	104	89	79	105	114	68	94	1144
WILLIAMS	63	76	98	82	92	88	90	100	90	89	84	51	1003
<b>TOTALS</b>	<b>5166</b>	<b>5139</b>	<b>5480</b>	<b>5410</b>	<b>5614</b>	<b>4742</b>	<b>4814</b>	<b>5398</b>	<b>5054</b>	<b>5737</b>	<b>5026</b>	<b>4472</b>	<b>62052</b>

**MISC CALLS BY CATEGORY - ANNUAL 2012**

	JAN	FEB	MAR	APRIL	MAY	JUNE	JULY	AUG	SEPT	OCT	NOV	DEC	Totals
HANG UP/WRONG NUMBER (HWN)	181	149	193	175	218	216	221	213	175	179	146	166	2232
REFERRED TO DHHS/CACD (REF)	186	168	259	200	214	271	253	284	152	171	189	231	2578
MISC INFO CALLS (MIS)	333	335	376	334	333	352	283	276	262	253	276	269	3682
CALLS FOR ON-CALL CONTACTS (OCC)	81	71	65	77	88	75	67	61	39	42	68	65	799
WCB (ON-CALL CALL BACKS, etc.)	14	10	6	14	7	10	16	7	8	8	5	6	111
TRANSFER CALLS (TC)	44	60	54	48	61	89	56	64	41	59	69	65	710
FOR/OR FROM HOTLINE SUP/ADMIN (HLS)	14	13	20	5	9	13	11	7	8	4	10	13	127
<b>TOTAL OTHER CALLS</b>	<b>853</b>	<b>806</b>	<b>973</b>	<b>853</b>	<b>930</b>	<b>1026</b>	<b>907</b>	<b>912</b>	<b>685</b>	<b>716</b>	<b>763</b>	<b>815</b>	<b>10239</b>

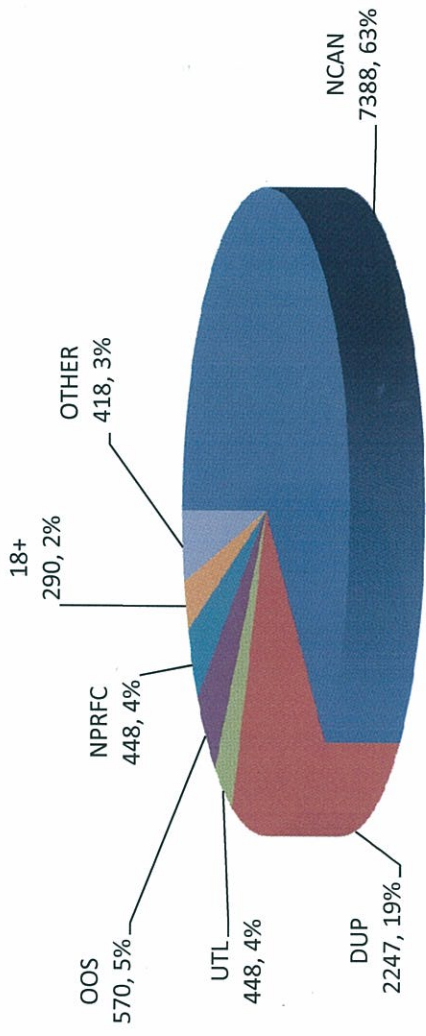
## 2012 MISCELLANEOUS CALLS



**SCREEN OUT TYPES -2012**

DATE	NCAN	DUP	UTL	OOS	NPRFC	18+	OTHER	TOTAL
Column1	Column2	Column3	Column4	Column5	Column6	Column8	Column9	Column10
JAN	532	161	39	49	20	21	27	849
FEB	514	187	32	33	33	9	29	837
MARCH	560	198	43	35	35	22	39	932
APRIL	597	220	19	48	37	20	29	970
MAY	662	190	47	34	46	15	41	1035
JUNE	550	158	44	48	32	24	40	896
JULY	588	168	45	68	40	17	37	963
AUG	688	205	51	73	36	35	44	1132
SEPT	570	224	31	46	23	30	37	961
OCT	786	234	43	57	43	40	29	1232
NOV	692	168	24	51	46	20	37	1038
DEC	649	134	30	28	57	37	29	964
TOTAL	7388	2247	448	570	448	290	418	11809

# 2012 SCREEN OUTS





## MEMORANDUM

**TO:** Captain Ron Stayton, Division Commander  
**FROM:** Gary Glisson, Hotline Administrator  
**RE:** 2012 Annual Hotline Statistics  
**DATE:** January 9, 2013

Attached you will find the 2012 Annual CACD Child Abuse Hotline Referral Statistics Report. There were a total of 6,314 CACD investigations opened which contained 10,864 maltreatment allegations, 8,257 Priority One allegations and 2,607 Priority Two allegations.

# CACD CHILD ABUSE HOTLINE REFERRAL ANNUAL STATISTICS FOR 2012

PRTY 1 ALLEGATION	JAN	FEB	MAR	APRIL	MAY	JUNE	JULY	AUG	SEPT	OCT	NOV	DEC	Totals	
Abandonment	1	0	0	1	1	0	0	0	0	1	0	12	19	35
Abuse w/ Deadly Weapon	5	9	7	4	9	4	3	5	5	8	7	3	2	66
Bone Fracture	16	9	6	15	15	8	11	6	6	13	13	3	15	130
Brain Damage/Skull Fract	2	4	3	4	0	6	2	5	5	4	1	3	5	39
Burns/Scalding	14	17	14	20	22	15	16	13	13	18	19	17	26	211
Cuts, Bruises, Welts	9	17	12	12	12	6	11	7	7	17	9	20	14	146
Death	2	2	4	3	4	3	6	6	6	2	1	2	1	36
Failure to Protect	31	22	16	17	25	10	23	17	17	15	20	14	14	224
Failure to Thrive	2	0	1	0	1	0	1	0	0	0	0	6	8	19
Immersion	0	0	2	0	1	2	4	3	3	1	2	0	2	17
Indecent Exposure	22	14	22	31	26	27	28	29	29	15	19	14	10	257
Internal Injuries	1	0	1	0	0	0	0	0	0	0	0	0	1	3
Juvenile Aggressor	1	0	0	1	2	0	0	3	6	6	5	1	4	23
Malnutrition	0	0	0	1	0	0	0	2	2	1	0	0	0	4
Med. Neg. of Dis. Infant	0	0	0	0	0	0	0	0	0	0	0	0	0	0
Mental Injury	2	2	2	1	2	1	1	1	1	1	5	18	16	52
Oral Sex	45	34	42	36	30	35	43	37	34	34	31	40	30	437
Poison/Noxious Subs	10	8	9	10	12	7	10	12	9	9	12	9	5	113
Porn/Exp. to Live Sex Actis	25	18	18	14	17	25	17	14	15	15	25	40	10	238
Sexual Contact	381	368	348	315	346	292	350	340	331	325	250	203	203	3849
Sexual Exploitation	18	11	16	34	21	13	10	15	13	13	34	18	8	211
Sexual Penetration	147	135	140	112	152	156	134	128	130	157	116	89	89	1596
Voyeurism	2	9	5	15	3	6	15	0	7	7	2	6	2	72
Subdural Hematoma	2	2	0	2	2	1	0	4	1	1	6	0	1	21
Suffocation	25	33	29	30	33	14	16	16	37	37	14	26	12	285
Threat of Harm	14	15	15	14	23	12	17	11	20	20	10	14	8	173
<b>Total Prty. One Allegations</b>	<b>777</b>	<b>729</b>	<b>712</b>	<b>692</b>	<b>759</b>	<b>643</b>	<b>718</b>	<b>674</b>	<b>699</b>	<b>717</b>	<b>632</b>	<b>505</b>	<b>8257</b>	

**PRTY 2 ALLEGATION**

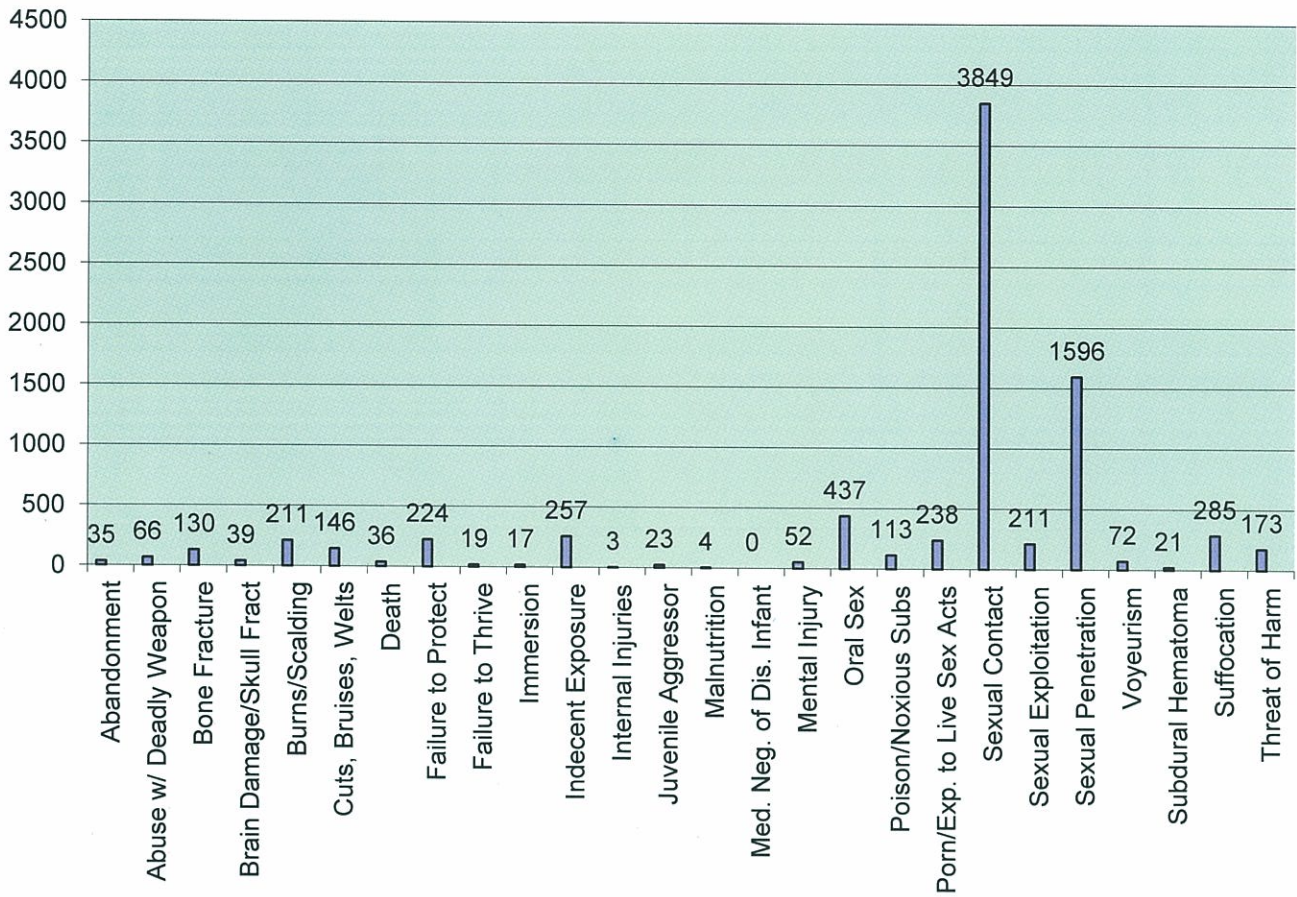
Totals

Cuts, Bruises, Welts	22	21	13	19	21	11	17	15	28	14	16	12	209
Educational Neglect	3	2	6	5	5	3	3	1	7	8	2	6	51
Environmental Neglect	12	6	10	8	11	14	11	12	13	6	12	16	131
Extreme/Repeated Cruelty	5	6	5	1	3	1	6	7	6	5	3	3	51
Failure to Protect	9	10	6	13	4	4	9	6	7	5	5	8	86
Human Bites	0	0	1	0	0	0	0	0	0	1	2	1	5
Inadequate Clothing	0	2	1	0	0	0	1	0	0	0	3	1	8
Inadequate Food	4	7	3	5	4	6	8	7	6	7	9	8	74
Inadequate Shelter	2	4	3	3	5	8	3	0	4	3	3	2	40
Inadequate Supervision	31	31	29	38	35	39	29	30	30	27	35	25	379
Kicking a Child	5	4	6	3	4	5	1	3	3	3	2	4	43
Lock-Out	3	0	0	3	0	0	2	1	1	1	0	2	13
Medical Neglect	4	5	7	4	7	1	7	1	5	12	12	7	72
Munchausen Syndrome	0	0	0	0	0	0	0	0	0	0	0	0	0
Oral Sex	8	10	5	5	3	6	3	9	3	7	5	5	69
Porn/Exp. To Live Sex Acts	4	4	2	2	1	0	5	0	2	2	2	0	24
Sexual Contact	41	49	38	37	42	35	30	46	25	27	32	23	425
Sexual Exploitation	1	4	1	4	0	1	0	3	2	4	2	1	23
Sexual Penetration	23	27	19	18	13	14	16	19	10	11	20	13	203
Shaking Child 4 & Over	0	1	0	0	0	0	0	0	0	0	10	0	11
Shaking Child 3 & Under	1	1	0	0	1	0	0	0	1	0	1	0	5
Sprains/Dislocations	0	0	3	0	1	0	0	0	0	1	1	0	6
Strike Child 7+ on Face	20	22	16	25	26	14	21	21	25	15	16	14	235
Strike Child 6- on Face	4	14	11	8	7	7	13	4	8	10	7	4	97
Strike Child w/ Fist	11	13	10	14	10	11	7	10	16	7	7	5	121
Strike/Pinch on Genitals	2	1	5	3	4	1	1	4	2	1	2	1	27
Substance Misuse	15	10	6	7	12	7	7	7	6	5	8	9	99
Throwing a Child	7	6	8	10	9	8	8	9	8	6	7	4	90
Tying/Close Confinement	2	4	0	0	0	0	0	0	0	0	2	2	10
<b>Total Prty. Two Allegations</b>	<b>239</b>	<b>264</b>	<b>214</b>	<b>235</b>	<b>228</b>	<b>196</b>	<b>208</b>	<b>215</b>	<b>218</b>	<b>188</b>	<b>226</b>	<b>176</b>	<b>2607</b>
<b>Total All CACD Allegations</b>	<b>1016</b>	<b>993</b>	<b>926</b>	<b>927</b>	<b>1003</b>	<b>839</b>	<b>926</b>	<b>889</b>	<b>917</b>	<b>905</b>	<b>858</b>	<b>681</b>	<b>10880</b>

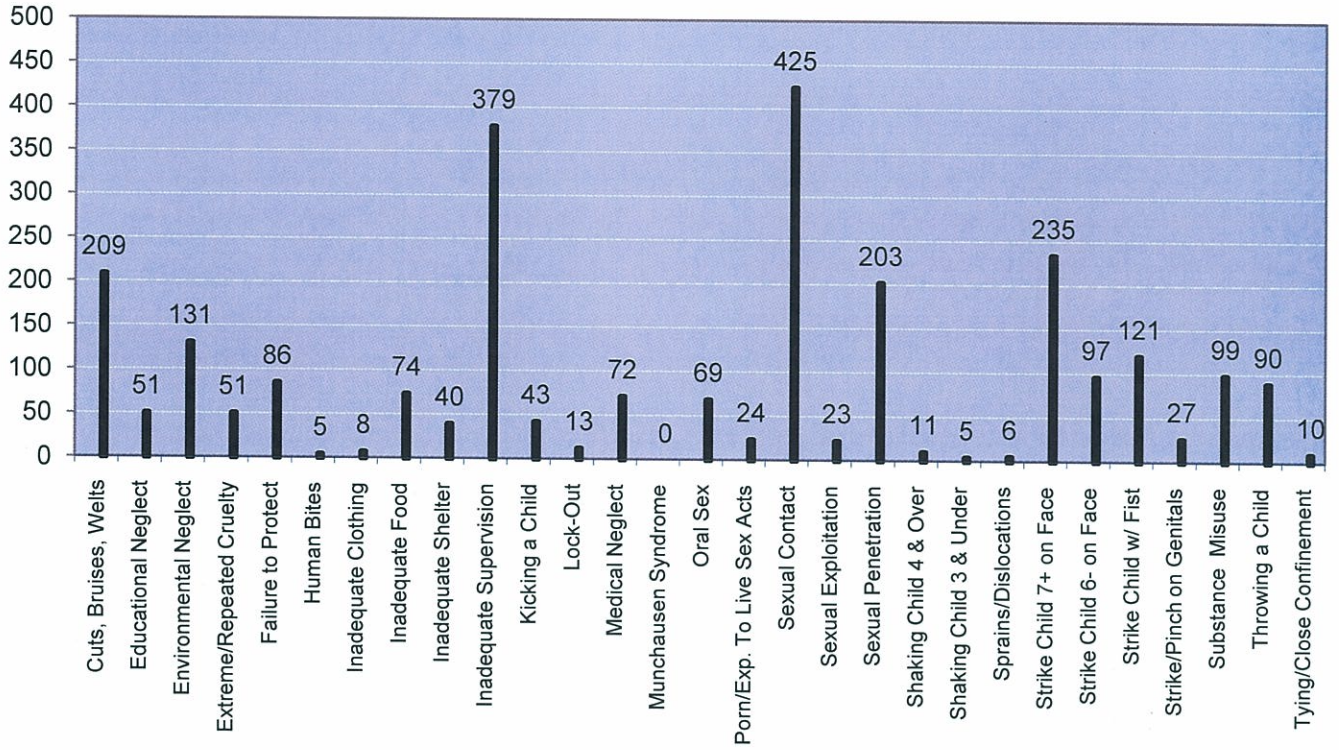
<b>Total CACD Child Abuse Hotline Referrals</b>	<b>566</b>	<b>550</b>	<b>555</b>	<b>532</b>	<b>556</b>	<b>505</b>	<b>499</b>	<b>499</b>	<b>520</b>	<b>559</b>	<b>553</b>	<b>420</b>	<b>6314</b>
---	------------	------------	------------	------------	------------	------------	------------	------------	------------	------------	------------	------------	-------------



# CACD Allegations Priority One



## CACD Allegation Priority Two



## CACD CHILD ABUSE HOTLINE REFERRAL STATS 2012

### PRTY. ONE ALLEGATIONS

Abandonment	35
Abuse w/a Deadly Weap	66
Bone Fracture	130
Brain Damage/Skull Fract	39
Burns/Scalding	211
Cuts, Bruises, Welts	146
Failure to Protect	36
Failure to Thrive	224
Immersion	19
Inadequate Supervision	17
Indecent Exposure	257
Internal Injuries	3
Juvenile Aggressor	23
Malnutrition	4
Med. Neg. of Dis. Infant	0
Mental Injury	52
Oral Sex	437
Poison/ Noxious	113
Pornography	238
Sexual Contact	3849
Sexual Exploitation	211
Sexual Penetration	1596
Voyeurism	72
Subdural Hematoma	21
Suffocation	285
Threat of Harm	173

### PRTY. TWO ALLETTOTAL TOTAL

Cuts, Bruises, Welts	209
Educational Neglect	51
Environmental Neglect	131
Extreme & Repeated Cruelt	51
Failure to Protect	86
Human Bites	5
Inadequate Clothing	8
Inadequate Food	74
Inadequate Shelter	40
Inadequate Supervision	379
Indecent Exposure	0
Kicking a Child	43
Lock Out	13
Medical Neglect	72
Munchausen by Proxy	0
Oral Sex	69
Pornography/Exp to Live Se	24
Sexual Contact	425
Sexual Exploitation	23
Sexual Penetration	203
Shaking Child 4 & over	11
Shaking Child 3 & under	5
Sprains/Dislocations	6
Striking child 7 +	235
Strking child 6 -	97
Strking child with fist	121
Strike Pinch on Genitals	27
Substance Misuse	99
Throwing a Child	90
Tying	10

<b>Total CACD Child Abuse Hotline Referrals</b>	<b>6314</b>
---	-------------