



Division of Children and Family Services

P.O. Box 1437, Slot S560 · Little Rock, AR 72203-1437
501-682-8772 · Fax: 501-682-6968 · TDD: 501-682-1442



September 3, 2013

The Honorable David Meeks, Chair
House Committee on Aging, Children,
and Youth, Legislative and Military Affairs
Arkansas Legislative Council
315 State Capitol Building
Little Rock, Arkansas 72201

The Honorable Stephanie Flowers, Chair
Senate Committee on Children
and Youth
Arkansas Legislative Council
315 State Capitol Building
Little Rock, Arkansas 72201

Dear Representative Meeks and Senator Flowers:

Act 1222 of 1995 mandates a quarterly evaluation of the performance of the Division of Children and Family Services. Attached is the Quarterly Performance Report (QPR) produced in compliance with that mandate. The report covers the 4th quarter of SFY 2013 (April 2013 to June 2013).

Forty copies of the report along with an electronic version are attached for your convenience. An addendum with additional information that has been requested by the legislative committees will follow in a separate document.

Effective the 1st quarter of SFY 2014 (July 2013 to September 2013), the structure of the QPR will be enhanced to better reflect the work being performed by the Division.

Should you have questions regarding the enclosed materials, please feel free to contact me.

Sincerely,

A handwritten signature in blue ink that reads "Cecile Blucker by B/C".

Cecile Blucker
Director

CB: fs

cc: John Selig, Director, Department and Human Services

Attachments (40)

Table of Contents

Executive Summary	i
Part I: Performance Indicators	1
Percentage of Children with True Allegations of Child Maltreatment Three Months, Six Months and One Year after a Previous True Report....	2
Percentage of Foster Families with True Reports of Maltreatment	2
Percentage of Children Receiving Supportive Services or Protective Services who were Abused or Neglected within One Year of the Initiation of Services	3
Percentage of Children Receiving Supportive Services or Protective Services who Entered Foster Care Within One Year of the Initiation of Services	4
Percentage of Children in Foster Care who Returned Home within Eighteen Months.....	4
Percentage of Children in Foster Care who have Experienced Two or Fewer Placements	5
Percentage of Siblings in Placement who are Placed Together.....	6
Percentage of Children Who Were Adopted Within One Year of Having Their Goal Changed to Adoption.....	7
Number of Children Placed in Pre-adoptive Homes whose Adoptions were Finalized within Twelve Months of Entering Pre-adoptive Placements	7
Part II: Compliance Index.....	8
Timely Initiation of Child Maltreatment Assessments	9
Timely Completion of Child Maltreatment Assessments	10
24- and 72-Hour Initial Health Screenings for Children Entering Foster Care.....	11
Comprehensive Health Assessments	12
Foster Home Recruitment	13
Foster Home Re-evaluations	13
Required Visits Made by Worker.....	14
Part III: Description of Population and Services.....	15
<i>Section I: True Child Maltreatment Reports.....</i>	16
Child Maltreatment Assessments	16
Characteristics of Children in True Maltreatment Reports	18
Children Involved in Allegations of True Maltreatment Reports	20
Child Maltreatment Reports Involving Fatalities or Near Fatalities.....	20
<i>Section II: Foster Care</i>	21
Characteristics of Children in Foster Care	21
Entries into Foster Care	25
Exits from Foster Care	28
Permanency Goals of Children in Foster Care	31
Length of Stay of Children in Foster Care.....	32

Number of Placements of Children in Foster Care	33
Characteristics of Children who Experienced Three or More Placements	34
Current Placement of Children in Foster Care	36
Characteristics of Children on Runaway Status at the End of the Quarter	38
Characteristics of Children in Relative Care	39
Section III: Adoption.....	41
Characteristics of Children with a Permanency Goal of Adoption at the End of the Quarter	41
Characteristics of Children whose Parents have had Parental Rights Terminated at the end of the Quarter	43
Characteristics of Children Available for Adoption at the End of the Quarter	45
Current Placements of Children Available for Adoption	47
Characteristics of Children in Pre-adoptive Placements	48
Children with Special Needs	50
Characteristics of Children with Finalized Adoptions	51
Subsidized Adoptions	53
Characteristics of Children who Received Adoption Subsidies.....	53
Pre-Adoptive Homes.....	54
Appendices	55
Appendix A: Summary of Reports Involving Child Fatality.....	55
Appendix B: Summary of Reports Involving Near Child Fatality	57
Appendix C: Summary of Reports Involving Fatalities of Children in Foster Care Who Did Not Receive A Maltreatment Investigation	58
Appendix D: Summary of Foster Care Maltreatment Reports.....	59
Appendix E: Reasons Foster Family Homes Closed	62

EXECUTIVE SUMMARY

The Quarterly Performance Report (QPR) is distributed to the Division of Children and Family Services' (DCFS) managers and legislative committees dealing with children and youth. The QPR for the fourth quarter of State Fiscal Year (SFY) 2013, specifically April through June 2013, consists of three parts:

1. **Performance Indicators**, which provide information on service outcomes, such as:
 - a. *Percentage of Children with True Allegations of Child Maltreatment Three Months, Six Months and One Year after a Previous True Report*
 - b. *Percentage of Siblings in Placement who are Placed Together*
 - c. *Percentage of Children Adopted Within One Year of Having Their Goal Changed to Adoption*

2. **Compliance Index**, which reports on the Division's compliance with requirements set by DCFS with guidance from the Arkansas legislative children and youth committees, such as:
 - a. *Timely Completion of Child Maltreatment Assessments*
 - b. *24- and 72-Hour Initial Health Screenings for Children Entering Foster Care*
 - c. *Foster Home Recruitment*

3. **Description of Population and Services**, which describes the children who were the subjects of maltreatment reports, were served in foster care and were provided adoption services, such as:
 - a. *Permanency Goals of Children in Foster Care*
 - b. *Characteristics of Children in Pre-Adoptive Homes*

The QPR provides this information on a quarterly basis, showing trends over time. The report provides the agency with information on the populations it serves and on pertinent issues so the agency can improve performance and better target its efforts.

Part I: Performance Indicators

DCFS has established nine performance indicators to measure its progress with regard to its major goals of child safety, permanency and well-being. During the fourth quarter, DCFS continued its efforts toward meeting these goals. Overall, DCFS maintained a performance standard that mirrors past efforts and successes.

There were no noteworthy areas in this section during the fourth quarter.

Part II: Compliance Index

DCFS has set compliance measures with guidance from the House Committees on Aging, Children and Youth, Legislative and Military Affairs and the Senate Interim Committee on Children and Youth. An index is compiled by reporting the level of compliance with the measures.

For the fourth quarter, the QPR addresses six noteworthy areas, as shown below:

- Timely Initiation of Child Maltreatment Assessments

DCFS initiated **86 percent** of its assigned investigations on time, which was the same as the previous quarter. Compliance remains less than the compliance goal of 95 percent.

The Division has established corrective action plans to help improve the timeliness of initiations in the areas where performance fell short of the established goal. Corrective actions include prompt hiring and training of new staff to fill vacant positions; assigning investigations to staff sooner; improving the supervisory oversight of staff's workloads; holding staff who do not initiate their investigations on time accountable through disciplinary action; utilizing on-call workers to initiate investigations in the evenings and weekends if the primary investigator is unable to locate the family during business hours; and ensuring that caseworkers document their interviews with alleged victim children into DCFS' information system (CHRIS) in a timely manner to receive credit for the initiation. In the event that alleged victim children are not seen despite workers' multiple attempts, staff will make concerted efforts to document their attempts in CHRIS in order to receive credit.

- Timely Completion of Child Maltreatment Assessments

The percentage of investigations completed in a timely manner for the quarter was **64 percent**, which was three percentage points higher than the previous quarter (61 percent). Statewide compliance continued to be below the compliance goal of 90 percent.

Area Directors have established corrective actions to improve performance for future quarters. First, explicit efforts are being made to ensure that investigators schedule adequate time in the office to document their activities in CHRIS without compromising the initiation of new investigations. Several areas are requiring their staff to conference with their supervisors at pre-determined intervals throughout the course of an investigation; at the same time, some areas are also directing staff to complete investigations several days prior to the conclusion of the 30-day timeframe so that supervisors have sufficient time to review them. Finally, prompt hiring and training of new staff to fill vacant positions was cited as another factor that will improve timely completion of investigations

- 24-Hour and 72-Hour Initial Health Screenings (IHS) for Children Entering Foster Care

During the fourth quarter, **84 percent** of the children requiring a 24-hour initial health screening received the screening on time. This represents an increase in compliance of two percentage points when compared to the previous quarter (82 percent) but remains below the goal of 95 percent.

Meanwhile, **89 percent** of the children who required a 72-hour initial health screening received the service on time, an increase of four percentage points from the previous quarter (85 percent) but still below the goal of 95 percent.

With most areas struggling to meet the compliance goal on this measure, Area Directors have developed corrective actions to remedy the barriers that prevent the timely completion of initial health screenings. Many areas have emphasized the need for caseworkers to schedule health screenings as soon as children come into foster care and to submit completed screenings to the agency's health service workers promptly so that the relevant information can be entered into CHRIS. The expectation among most Area Directors is that improved communication and scheduling with providers along with greater supervisory oversight can improve compliance for future quarters.

- Comprehensive Health Assessments

The percentage of comprehensive health assessments completed on time was **83 percent**, which was six percentage points higher than the previous quarter (77 percent). Compliance remains below the goal of 95 percent.

The Division has established corrective actions to increase compliance for this measure. The same issues that served as barriers to the timely completion of initial health screenings have adversely affected the timely completion of comprehensive health assessments. Area Directors hope that improved

communication among staff, advanced planning for transportation, and scheduling with providers can further improve performance.

- Required Visits Made by Worker

During the fourth quarter, the percentage of foster children who received a required monthly visit from their caseworkers averaged **70 percent**, which was an increase of five percentage points from the previous quarter but still below the goal of 85 percent. In addition to visiting children in foster care, caseworkers are also required to make monthly visits to families involved with the agency through in-home protective services cases.¹ At the end of the fourth quarter, there were 2,954 in-home protective services cases open across the state, involving 6,652 children.

In order to increase the number of required visits made by workers, several areas have placed a greater focus on monitoring workers' visitation schedules to ensure that workers are making and documenting their required visits. Other efforts include having workers schedule more visits in the late afternoon and evening when families are more likely to be home and utilizing CHRIS-based management reports to identify cases that require visits.

¹ In-home protective services cases are cases in which DCFS monitors the risk and safety issues within the family's home but they have not warranted the removal of children.

Part III: Description of Population and Services

The Description of Population and Services section describes the children who were subjects of maltreatment reports, were served in foster care and were provided with adoption services.

There were no noteworthy areas in this section for the fourth quarter.

PART I: PERFORMANCE INDICATORS

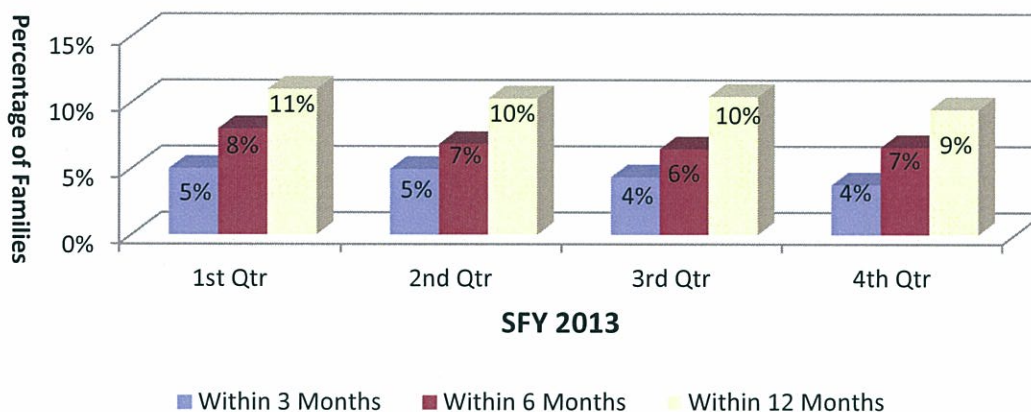
The Division has established nine performance measures to indicate achievement levels related to its major goals in child safety, family preservation and permanency:

- Percentage of children with true allegations of maltreatment three months, six months and one year after a previous true report;
- Percentage of foster families with true reports of maltreatment;
- Percentage of children receiving Supportive Services or Protective Services who were abused or neglected within one year of the initiation of services;
- Percentage of children receiving Supportive Services or Protective Services who entered foster care within one year of the initiation of services;
- Percentage of children in foster care who returned home within eighteen months;
- Percentage of children in foster care who have experienced two or fewer placements;
- Percentage of siblings in placement who are placed together;
- Percentage of children who were adopted within one year of having their goal changed to adoption; and
- Number of children placed in pre-adoptive homes whose adoptions were finalized within twelve months of entering pre-adoptive placements.

Percentage of Children with True Allegations of Child Maltreatment Three Months, Six Months and One Year after a Previous True Report

Of the 2,367 children involved in true reports of maltreatment during the fourth quarter one year ago, nine percent (224) had a subsequent true report within 12 months.

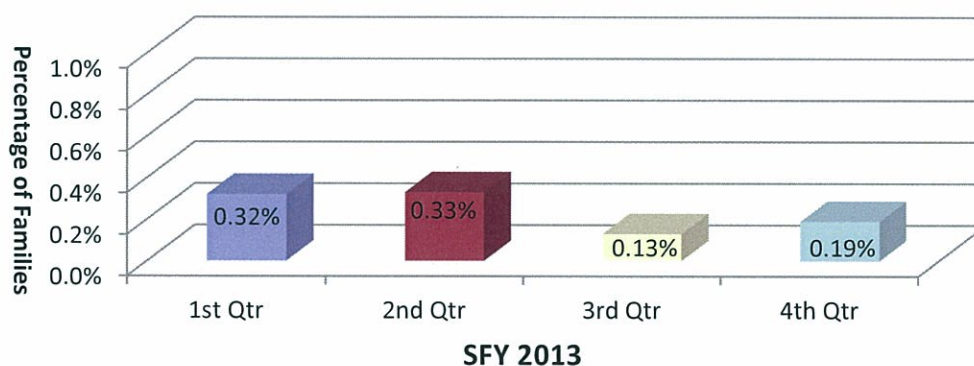
Chart 1: Recurrence of Maltreatment within 12 Months of Initial Report



Percentage of Foster Families with True Reports of Maltreatment

Of the 27 maltreatment reports received during the fourth quarter in which foster parents were the alleged offenders, three were determined to be true. Based on the 1,582 foster homes² active during the quarter, the percentage of foster families with a true report of maltreatment was 0.19 percent.

Chart 2: Percentage of Foster Families with True Reports of Maltreatment

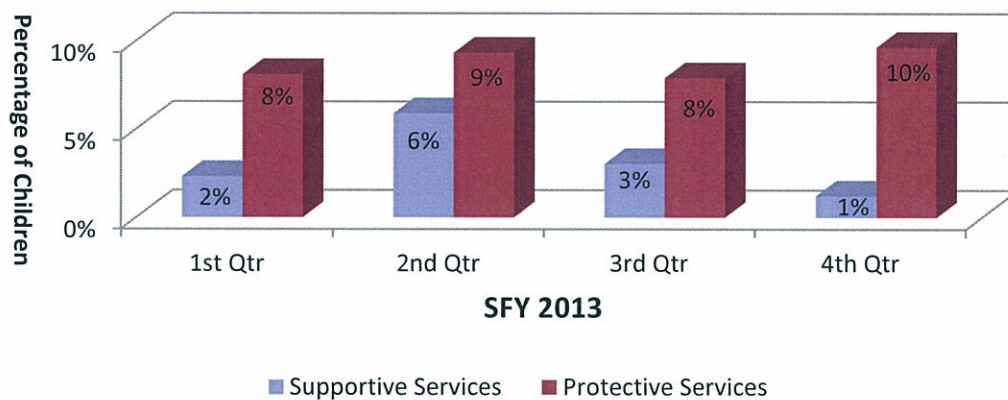


² This includes family and therapeutic foster homes.

Percentage of Children Receiving Supportive Services or Protective Services who were Abused or Neglected within One Year of the Initiation of Services

Of the 246 children who began receiving Supportive Services during the fourth quarter one year ago, three (one percent) experienced a true report of maltreatment within one year. Of the 3,052 children who began receiving Protective Services during the fourth quarter one year ago, 294 children (10 percent) were involved in a true report within one year.

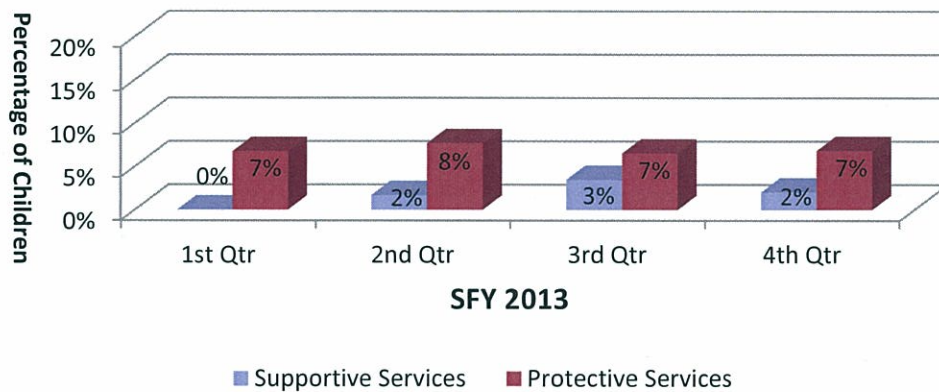
Chart 3: Children Receiving Supportive Services and protective Services who were Abused or Neglected within One Year of the Initiation of Service



Percentage of Children Receiving Supportive Services or Protective Services who Entered Foster Care within One Year of the Initiation of Services

Of the 246 children who began receiving Supportive Services during the fourth quarter one year ago, five (two percent) entered foster care within one year of the initiation of those services. Meanwhile, 208 of the 3,052 (seven percent) children who began receiving Protective Services during the same timeframe entered care within one year.

Chart 4: Children Receiving Supportive Services or Protective Services who Entered Foster Care within One Year of the Initiation of Service



Percentage of Children in Foster Care who Returned Home within Eighteen Months

During the quarter 18 months prior to the start of the current quarter, 846 children entered foster care. Of those, 669 children (79 percent) returned home within 18 months. The percentage of children returning home within 12 months stood at 66 percent, exceeding the national median of 48.4 percent.

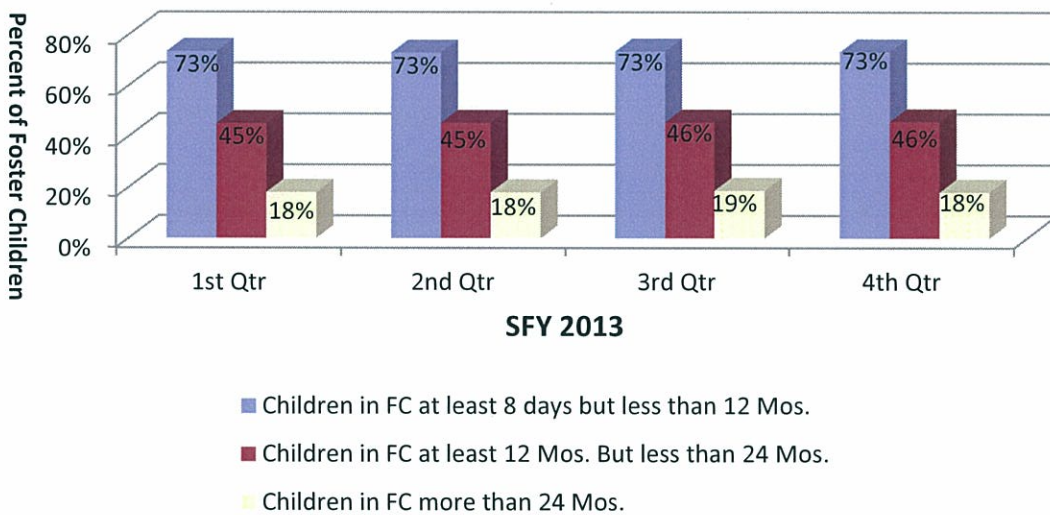
Chart 5: Children in Foster Care who Return Home within Eighteen Months



Percentage of Children in Foster Care who have Experienced Two or Fewer Placements

Placement stability of children in foster care is measured by the percentage of children with two or fewer placements who are in care for varying lengths of time. Of the children at the end of the quarter who were in foster care for less than 12 months, 73 percent experienced two or fewer placements; the national standard is 86 percent. Of the children in foster care between 12 and 24 months, 46 percent had two or fewer placements; the national standard for this population is 65.4 percent. Finally, of the children who were in foster care for over two years, only 18 percent experienced two or fewer placements during their stay in foster care, with the national standard for this population being 41.8 percent.

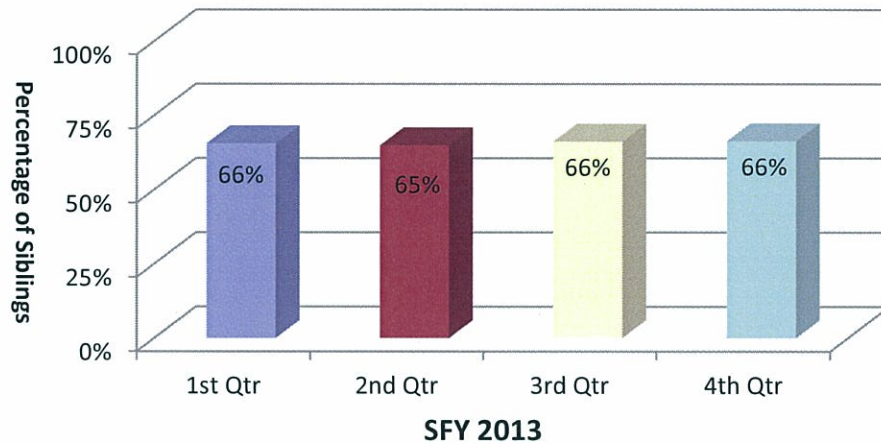
Chart 6: Children in Foster Care who have Experienced Two or Fewer Placements



Percentage of Siblings in Placement who are Placed Together

During the fourth quarter, there were 1,962 children with siblings in foster care. Of those children, 66 percent (1,301) were placed with at least one of their siblings. Of those same 1,962 children, 47 percent were placed with all of their siblings, which was the same percentage as the previous quarter. These figures do not exclude children who were placed separately for valid reasons such as safety issues or court orders.

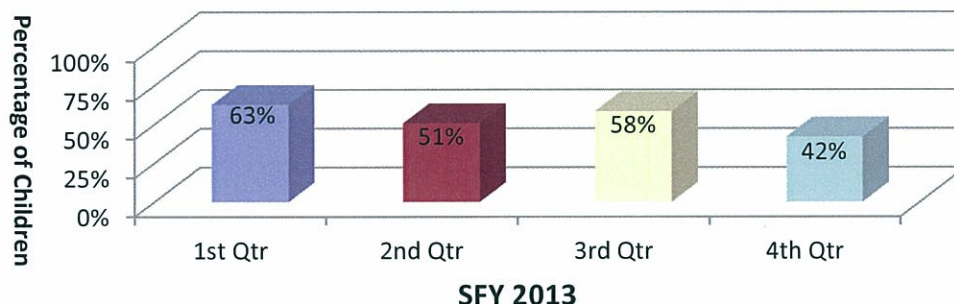
Chart 7: siblings in Care who are placed Together



Percentage of Children Who Were Adopted Within One Year of Having Their Goal Changed to Adoption

Of the 262 children whose permanency goal was changed to adoption during the quarter one year ago, 110 children (42 percent) were adopted within one year of the goal change.

Chat 8: Percentage of Children Who Were Adopted Within One Year of Having Goal Changed to Adoption



Number of Children Placed in Pre-adoptive Homes whose Adoptions were Finalized within Twelve Months of Entering Pre-adoptive Placements

Between April and June 2012, 142 children were placed in pre-adoptive homes. Of those children, 129 had their adoptions finalized within 12 months of the placement.

Ten children experienced a disruption, which occurs when a child has been placed in a pre-adoptive home and the family or the child subsequently decides not to proceed with the adoption, resulting in the child leaving the home. Finalization of the adoption was still pending 12 months after the placement for six of the children.

**Table 1: Children Placed in Pre-adoptive Homes whose Adoptions were Finalized within Twelve Months of Entering Pre-adoptive Placements
4th Quarter SFY 2013**

Adoption Status	Number of Children
Children Placed in Pre-adoptive Homes	142
Finalized Adoptions	129
Disrupted Adoptive Placements	10
Children with a Disruption who were Re-placed in Pre-adoptive Homes	3
Still Pending after Twelve Months	6

PART II: COMPLIANCE INDEX

The Division has set compliance measures with guidance from the Joint Interim Committee on Children and Youth. An index is compiled by reporting the level of compliance in relation to these measures.

Goal Compliance Measure

- 95%** ***Timely Initiation of Child Maltreatment Assessments.*** Timely initiation means the investigator interviews or observes the victim child outside the presence of the alleged offender within 24 hours of any report of alleged severe maltreatment or within 72 hours otherwise.
- 90%** ***Timely Completion of Child Maltreatment Assessments.*** Timely completion means a determination must be made regarding an allegation of child maltreatment within 30 days of receipt of the allegation.
- 95%** ***24-Hour Initial Health Screenings.*** This screening is conducted within 24 hours after removal from the home on children who enter foster care due to an allegation of severe maltreatment or if there is evidence of acute illness or injury.
- 95%** ***72-Hour Initial Health Screenings.*** This screening is conducted within 72 hours after removal from the home on all children who enter foster care who are not subject to the 24-hour screening.
- 95%** ***Comprehensive Health Assessments.*** The purpose of this assessment is to evaluate the physical and mental health status of all foster children and is to be completed within 60 days of a child entering foster care.
- 80** ***Foster Home Recruitment.*** DCFS must ensure that a sufficient number and variety of foster homes that meet minimal standards and match the needs and characteristics of foster children are available. The goal is 80 homes for the quarter or 320 homes for the year.
- 95%** ***Foster Home Re-evaluations.*** DCFS must re-evaluate at least annually each foster home's ability to care for children.
- 85%** ***Required Visits Made by Worker.*** DCFS must provide data on the percentage of monthly visits made by DCFS workers to children in foster care.

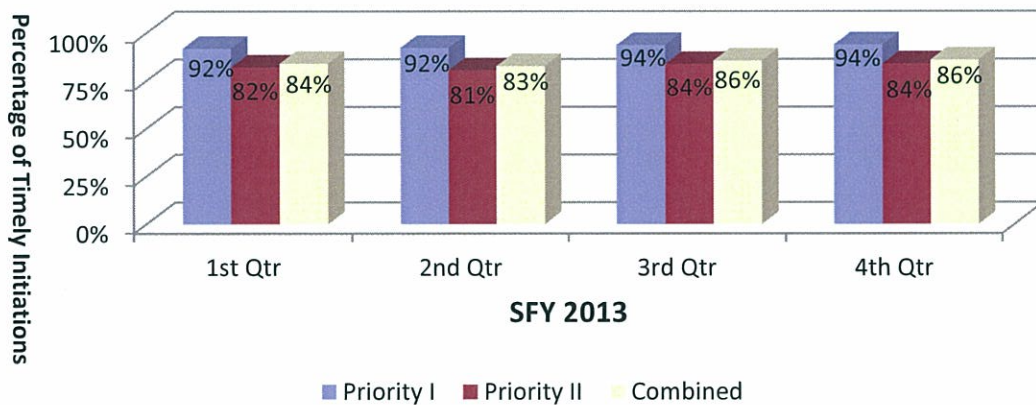
Timely Initiation of Child Maltreatment Assessments

Whenever there is an allegation of child maltreatment, a Family Service Worker, a Crimes Against Children Division (CACD) staff member, or staff from another local law enforcement agency must interview or observe the victim child(ren) outside the presence of the alleged offender within 24 hours for Priority I referrals or within 72 hours for Priority II referrals. There were 8,200 referrals of child maltreatment during the quarter. Of those, 6,775 were assigned to DCFS for investigation—1,366 Priority I referrals and 5,409 Priority II referrals.

Of the DCFS assigned Priority I referrals, 1,290 (94 percent) were initiated within the required 24-hour period. Of the DCFS Priority II referrals, 4,552 (84 percent) were initiated within the required 72-hour period. Overall, 86 percent of the referrals were initiated within the required timeframe. The combined compliance rate was the same as the previous quarter.

The Crimes Against Children Division (CACD) of the Arkansas State Police is also responsible for handling child abuse assessments. CACD was responsible for 1,425 of the 8,200 referrals that came in during the quarter, of which 1,288 were Priority I referrals and 137 were Priority II referrals. Of the Priority I referrals, 1,212 (94 percent) were initiated in a timely manner while 127 (93 percent) of the Priority II referrals were initiated on time.

Chart 9: Timely Initiations of Child Maltreatment Assessments (DCFS Only)

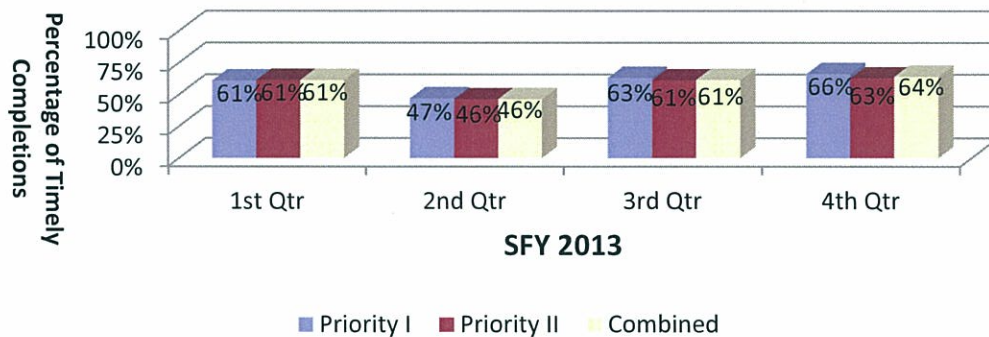


Timely Completion of Child Maltreatment Assessments

Of the 1,366 Priority I reports assigned to DCFS, 904 (66 percent) were completed within the required 30-day period. Of the 5,409 DCFS Priority II reports, 3,395 (63 percent) were completed within the required 30-day period. The completions resulted in an overall compliance rate of 64 percent, which was a three percentage point increase from the previous quarter.

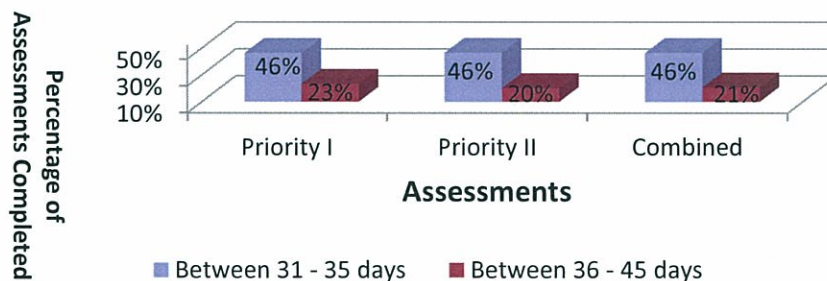
As referenced earlier, CACD was responsible for 1,425 of the incoming reports received during the quarter—1,288 Priority I assessments and 137 Priority II assessments. Of the Priority I assessments, 1,000 (78 percent) were completed on time while 100 (73 percent) of the Priority II assessments were completed on time.

Chart 10: Timely Completion of DCFS Assessments (DCFS Only)



Of the 2,476 DCFS-assigned investigations that became overdue at any point during the quarter, 1,150 (46 percent) were completed within five days of becoming overdue and another 515 (21 percent) were completed within six to 15 days of becoming overdue. Overall, 67 percent of the overdue investigations were completed within 15 days of being overdue (Chart 11).

Chart 11: Overdue Assessments Completed between 31 to 45 Days of Report Date

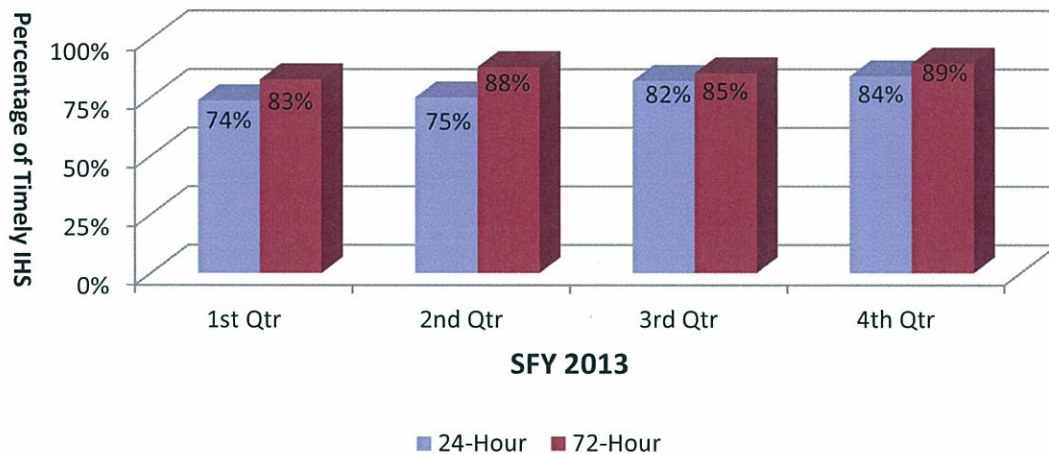


24- and 72-Hour Initial Health Screenings for Children Entering Foster Care

When a child enters foster care due to an allegation of severe maltreatment or if there is evidence of acute illness or injury, DCFS must conduct an initial health screening within 24 hours of the child’s removal from the home. Of the 293 children who required the 24-hour health screening during the fourth quarter, 246 children (84 percent) received the screening in a timely manner. The compliance increased by two percentage points from the previous quarter.

All children entering foster care who do not require the initial 24-hour health screening must still undergo an initial health screening within 72 hours of their removal. Of the 712 children who required the 72-hour health screening, 637 (89 percent) received their screenings on time, which was four percentage points higher than the previous quarter.

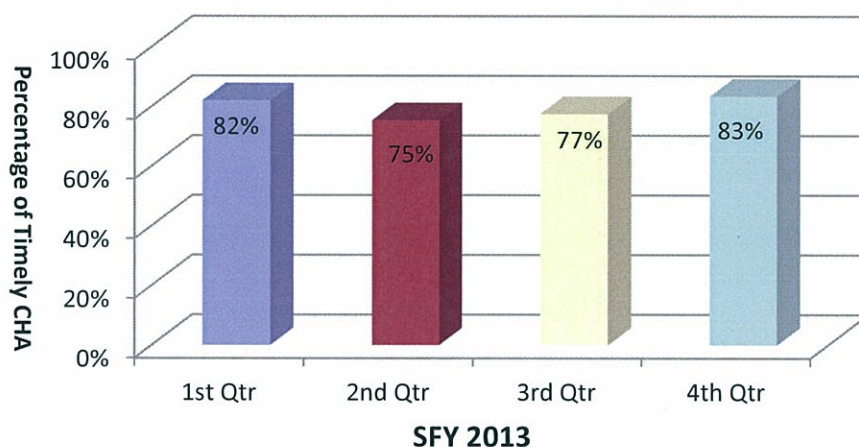
Chart 12: 24- and 72- Hour Initial Health Screenings for Children Entering Foster Care



Comprehensive Health Assessments

All children entering foster care must receive a comprehensive health assessment which evaluates their physical and mental health status; the assessment is to be completed within 60 days of entering foster care. Between January 31, 2013 and May 1, 2013, 626 children entered foster care who remained in care for at least 60 days. Of those children, 522 received their comprehensive health assessment in a timely manner. The resulting compliance rate was 83 percent, which was six percentage points higher than the previous quarter.

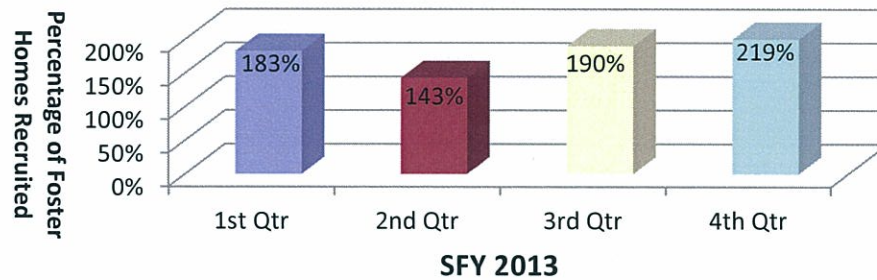
Chart 13: Comprehensive Health Assessments



Foster Home Recruitment

DCFS recruited 175 new foster homes during the fourth quarter. At the same time, 119 foster homes were closed, resulting in a net gain of 56 foster homes for the quarter. Refer to Appendix E for the reasons foster homes closed.

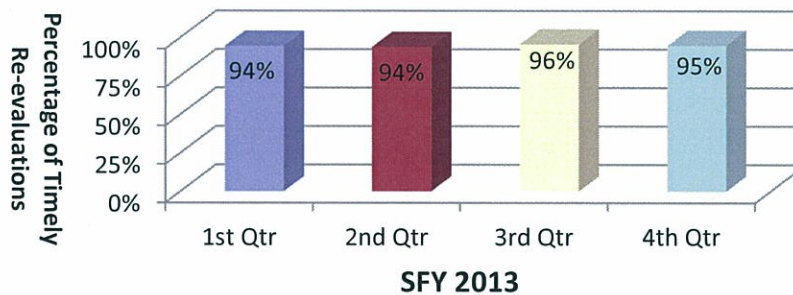
Chart 14: Foster Home Recruitment



Foster Home Re-evaluations

On an annual basis, at a minimum, DCFS is to conduct re-evaluations of each foster home’s ability to care for children. Of the 1,193 foster homes active at the end of the fourth quarter, a current re-evaluation was available for 1,130 homes. The resulting 95 percent compliance rate was one percentage point lower than the previous quarter.

Chart 15: Foster Home Re-evaluations

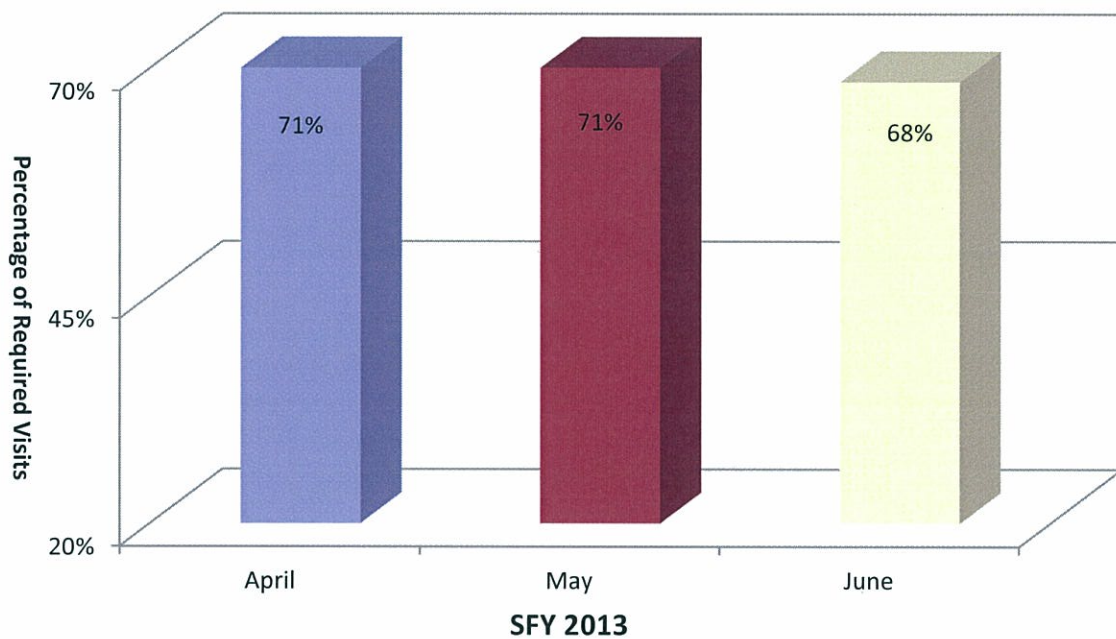


Required Visits Made by Worker

DCFS acknowledges the importance of worker contact with children in foster care and believes that these visits should be conducted face-to-face in the children’s placement setting, at least once per month.

During the fourth quarter, 70 percent of the children in foster care received a monthly visit. This result was five percentage points higher than the previous quarter, though still below the goal of 85 percent.

Chart 16: Required Foster Care Monthly Visits Made by Worker



PART III: DESCRIPTION OF POPULATION AND SERVICES

This section describes the number and status of maltreatment assessments, children who were served in foster care, and children who were provided adoption services.

Section I outlines characteristics of children in true maltreatment reports such as age, gender and ethnicity, and also compares state ethnicity data to national data. Additionally, this section defines the types of allegations in maltreatment reports.

Section II describes the foster care population. Specifically, it describes the characteristics of children in foster care, entries and exits of children in foster care, reasons children come into care, lengths of stay for children in foster care as well as children in relative care, placements of children in foster care and the number of placements children experience while in care.

Section III reports adoption data such as the characteristics of children available for adoption, current placement of those children, characteristics of children placed in adoptive homes, children whose parents have terminated their parental rights but have not been placed in adoptive homes, finalized adoptions and adoption subsidies.

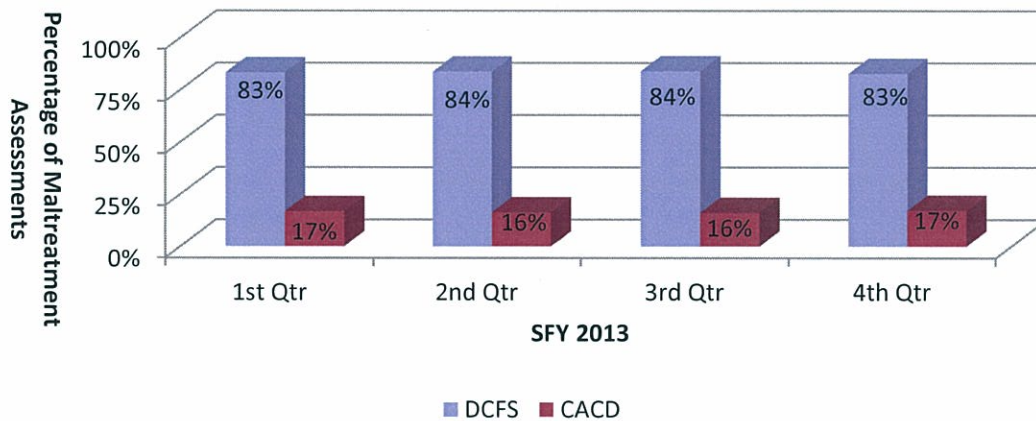
Part III: Description of Population and Services
Section I: True Child Maltreatment Reports

Child Maltreatment Assessments

During the fourth quarter, 8,200 maltreatment reports were received and assigned for investigation. Of those, 6,775 (83 percent) were assigned to DCFS. This figure represents a four percent increase in the number of reports assigned to DCFS from the previous quarter (6,541).

Of those same 8,200 reports, 1,425 (17 percent) were assigned to CACD. This figure represents a 14 percent increase in the number of reports assigned to CACD from the previous quarter (1,255).

Chart 17: Child Maltreatment Assessments



Of the 8,200 maltreatment reports received during the fourth quarter of SFY 2013, 1,837 reports (22 percent) were found to be true, a rate that was one percentage point lower than the same quarter ending one year ago. The national percentage is 19 percent.³ There were 2,536 victim children involved in the 1,837 true reports for the quarter.

Table 2: Child Maltreatment Assessments

	Total Assessments	True Assessments	Percent True
1st Qtr SFY 2013	8,200	1,801	22%
2nd Qtr SFY 2013	9,166	1,847	20%
3rd Qtr SFY 2013	7,796	1,771	23%
4th Qtr SFY 2013	8,200	1,837	22%

	DCFS			CACD		
	Total Assessments	True Assessments	Percent True	Total Assessments	True Assessments	Percent True
1st Qtr SFY 2013	6,825	1,285	19%	1,375	516	38%
2nd Qtr SFY 2013	7,670	1,401	18%	1,496	446	30%
3rd Qtr SFY 2013	6,541	1,354	21%	1,255	417	33%
4th Qtr SFY 2013	6,775	1,363	20%	1,425	474	33%

³ Source: Child Maltreatment 2011, Reports from the States to the National Child Abuse and Neglect Data System, U.S. Department of Health and Human Services, Administration for Children and Families, Administration on Children, Youth and Families, Children’s Bureau.

Characteristics of Children in True Maltreatment Reports

As referenced previously, 2,536 victim children were involved in true reports of maltreatment during the fourth quarter. The table below outlines the demographic information for these victim children.⁴

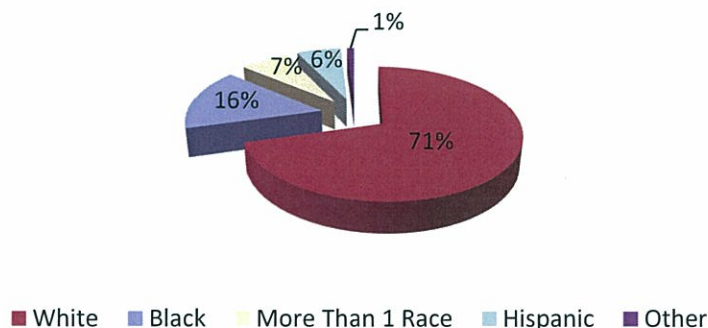
**Table 3: Characteristics of Children in True Maltreatment Reports
4th Quarter SFY 2013**

Age	Gender	White	Black	Asian	AIAN	NAPI	Hispanic	More Than 1 Race	Total
0 to 1	Female	96	27	1	1	0	17	8	150
	Male	114	30	0	0	1	7	9	161
2 to 5	Female	224	52	2	0	0	20	26	324
	Male	253	72	3	0	3	27	32	390
6 to 11	Female	295	53	0	1	3	19	34	405
	Male	274	64	1	1	5	21	25	391
12 to 15	Female	239	46	0	0	1	23	20	329
	Male	115	18	0	1	0	8	11	153
16 to 18	Female	103	18	0	0	0	7	4	132
	Male	51	8	0	0	0	6	1	66
18+	Female	0	0	0	0	0	0	0	0
	Male	0	0	0	0	0	0	0	0
Total*		1,764	388	7	4	13	155	170	2,501

*Demographic data have not been entered into CHRIS for 35 children.

Of the children involved in true maltreatment reports, 71 percent were white and 16 percent were black.

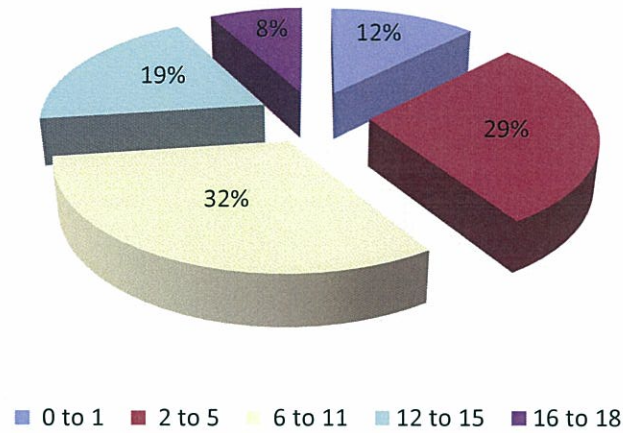
Chart 18a: Race/Ethnicity of Children in True Reports



⁴ Table 3, and each subsequent demographic table, divides up "other" races and ethnicities into the following categories: "Hispanic," "More than One Race," "Asian" (includes Indonesian, Cambodian, Hmong and Vietnamese), "AIAN" (includes Native American, Alaskan Native and American Indian) and "NAPI" (includes Native Hawaiian and other Pacific Islanders).

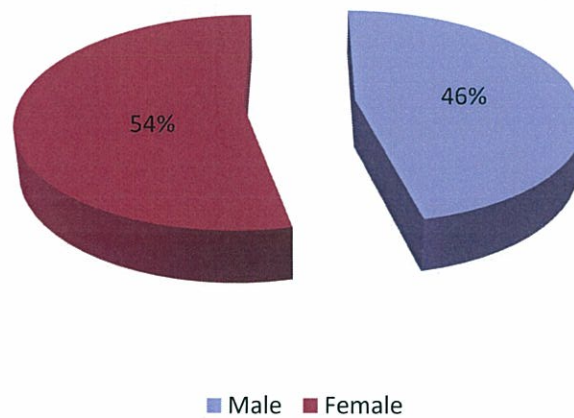
Children ages six to 11 represent the largest group of children involved in true maltreatment reports (32 percent), followed by children ages two to five (29 percent).

Chart 18b: Ages of Children in True Reports



More female children (54 percent) than male (46 percent) were involved in true maltreatment reports.

Chart 18c: Gender of Children in True Reports



Children Involved in Allegations of True Maltreatment Reports

During the quarter, the majority of the 2,536 children involved in true maltreatment reports were involved in allegations of neglect (82 percent), followed by allegations of physical abuse (44 percent) and sexual abuse (24 percent).⁵

**Table 4: Percentage of Children Involved in True Allegations of Maltreatment
3rd Quarter SFY 2013 – 4th Quarter SFY 2013**

	3rd Quarter		4th Quarter	
Neglect	2,102	85%	2,067	82%
Physical Abuse	1,080	44%	1,113	44%
Sexual Abuse	594	24%	607	24%

Child Maltreatment Reports Involving Fatalities or Near Fatalities

During the fourth quarter of SFY 2013, there were eight investigations of a child fatality and one investigation of a near child fatality. Table 5 summarizes the findings of the reports involving the fatality or near fatality of a child. Appendix A provides a summary of each report involving a child fatality and Appendix B provides a summary of those involving a near fatality.

**Table 5: Findings of Maltreatment Reports
Involving Fatalities or Near Fatalities**

Finding	Child Fatality	Near Child Fatality
True	2	1
Unsubstantiated	1	0
Pending	5	0

⁵ The total number of children represented will outnumber the total children involved in true maltreatment reports because a child can be involved in more than one allegation. Therefore, the sum of percentages of children involved in maltreatment reports will be greater than 100 percent.

Part III: Description of Population and Services
Section II: Foster Care

Characteristics of Children in Foster Care

During the fourth quarter, 4,845 children spent time in foster care. This number includes children who remained in care from previous quarters as well as children who came into care during the quarter. The following table outlines the characteristics of the children who were in care during the quarter.

Table 6: Characteristics of Children in Foster Care During the Quarter
4th Quarter SFY 2013

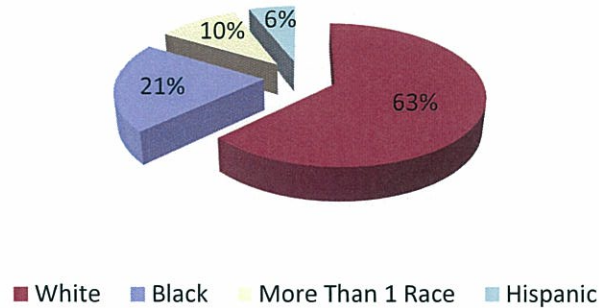
Age	Gender	White	Black	Asian	AIAN	NAPI	Hispanic	More Than 1 Race	Total
0 to 1	Female	247	78	0	1	0	20	38	384
	Male	296	93	0	0	0	23	37	449
2 to 5	Female	377	110	0	1	0	37	70	595
	Male	411	119	2	0	0	49	67	648
6 to 11	Female	394	103	0	0	0	39	69	605
	Male	437	119	0	2	3	39	86	686
12 to 15	Female	222	79	0	0	0	21	32	354
	Male	246	83	0	2	1	20	38	390
16 to 18	Female	180	67	0	0	0	19	30	296
	Male	177	79	0	0	1	14	27	298
18+	Female	15	26	1	0	0	6	5	53
	Male	30	35	1	0	0	3	6	75
Total*		3,032	991	4	6	5	290	505	4,833

*Demographic information have not been entered into CHRIS for 12 children.

The chart on the following page shows that 63 percent of the children in foster care during the quarter were white and 21 percent were black. National data reveal that only 41 percent of the children in the national foster care system were white, while 27 percent of the children were black.⁶

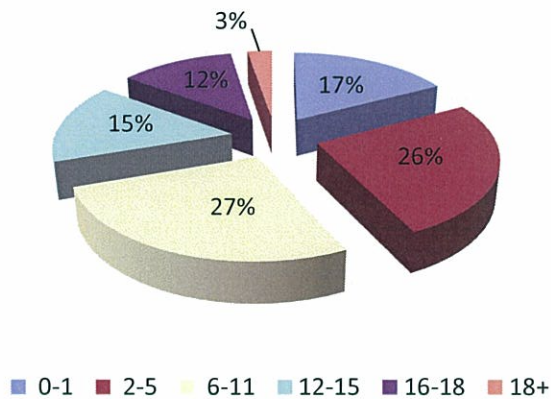
⁶ Adoption and Foster Care Analysis and Reporting System (AFCARS) preliminary data submitted for children in foster care between 10/1/2010 and 9/30/2011 as of July 2012.

Chart 19a: Race/Ethnicity of Children in Care During the Quarter



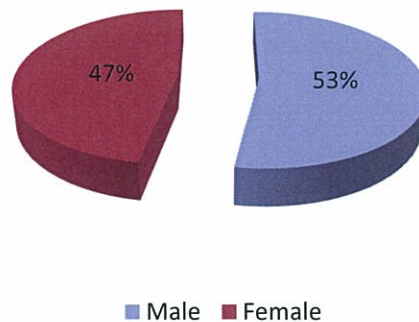
Children ages six to 11 (27 percent) and two to five (26 percent) represent the largest groups of children who were in care during the quarter.

Chart 19b: Ages of Children in Foster Care During the Quarter



The following chart shows that more male children (53 percent) were in care during the fourth quarter than female children (47 percent).

Chart 19c: Gender of Children in Foster Care During the Quarter



At the end of the quarter, 3930 children were in foster care. The following table outlines the characteristics of the children in foster care at the end of the fourth quarter.

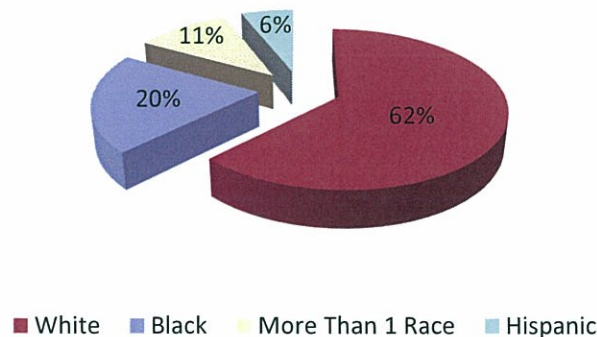
**Table 7: Characteristics of Children in Foster Care at the End of the Quarter
4th Quarter SFY 2013**

Age	Gender	White	Black	Asian	AIAN	NAPI	Hispanic	More Than 1 Race	Total
0 to 1	Female	197	65	0	1	0	10	35	308
	Male	242	76	0	0	0	17	28	363
2 to 5	Female	284	82	0	1	0	29	57	453
	Male	320	93	0	0	0	40	51	504
6 to 11	Female	314	79	0	0	0	29	55	477
	Male	355	97	0	2	3	37	73	567
12 to 15	Female	185	61	0	0	0	20	27	293
	Male	215	67	0	1	1	18	37	339
16 to 18	Female	145	59	0	0	0	14	29	247
	Male	150	68	0	0	1	13	26	258
18+	Female	13	24	1	0	0	5	5	48
	Male	26	29	1	0	0	3	5	64
Total*		2,446	800	2	5	5	235	428	3,921

*Demographic information has not been entered into CHRIS for nine children.

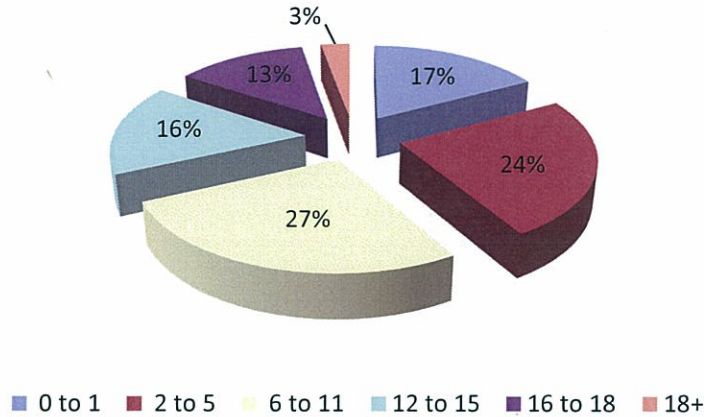
Sixty-two percent of the children in foster care at the end of the quarter were white, while 20 percent were black.

Chart 20a: Race/Ethnicity of Children in Foster Care at the End of the Quarter



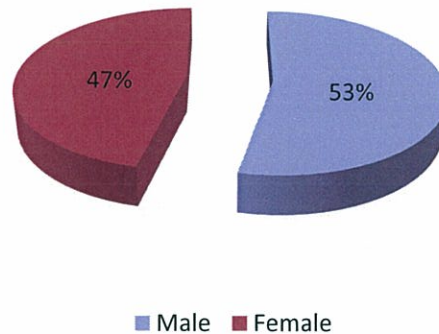
Children between the ages of six and 11 (27 percent) represent the largest group of children who were in care at the end of the quarter, followed closely by children between the ages of two and five (24 percent).

Chart 20b: Ages of Children in Foster Care at the End of the Quarter



Fifty-three percent of the children in foster care at the end of the quarter were male and 47 percent were female.

Chart 20c: Gender of Children in foster Care at the End of the Quarter



Entries into Foster Care

During the fourth quarter, 1,061 children entered foster care, an increase from the previous quarter (952).

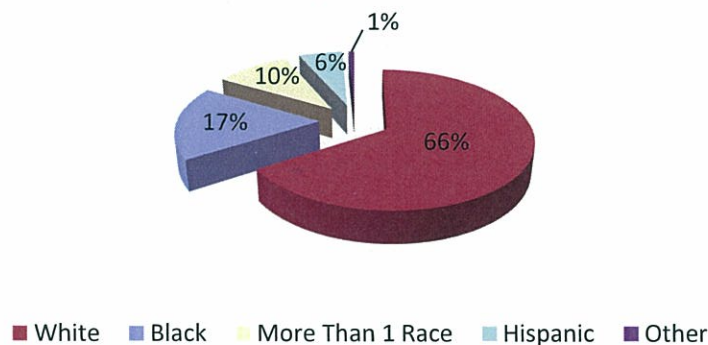
**Table 8: Characteristics of Children Entering Foster Care During the Quarter
4th Quarter SFY 2013**

Age	Gender	White	Black	Asian	AIAN	NAPI	Hispanic	More Than 1 Race	Total
0 to 1	Female	72	17	0	0	0	5	8	102
	Male	88	30	0	0	0	6	5	129
2 to 5	Female	95	25	0	0	0	11	17	148
	Male	98	26	1	0	0	13	21	159
6 to 11	Female	94	16	0	0	0	11	17	138
	Male	112	30	0	1	3	12	20	178
12 to 15	Female	55	15	0	0	0	1	5	76
	Male	39	13	0	1	1	2	9	65
16 to 18	Female	22	5	0	0	0	1	1	29
	Male	20	7	0	0	1	0	2	30
18+	Female	0	0	0	0	0	0	0	0
	Male	0	0	0	0	0	0	0	0
Total*		695	184	1	2	5	62	105	1,054

*Demographic data have not been entered into CHRIS for seven children.

The chart below shows that 66 percent of the children who entered foster care during the quarter were white, while 17 percent were black. National data indicate that 44 percent of the children who enter care are white, 23 percent are black, and 21 percent are Hispanic.⁷

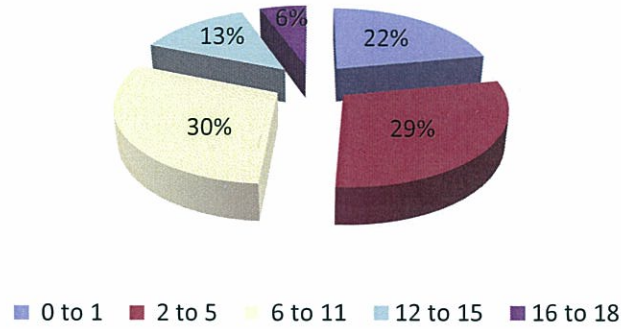
Chart 21a: Race/Ethnicity of Children who Entered Care



⁷ Adoption and Foster Care Analysis and Reporting System (AFCARS) preliminary data submitted for children in foster care between 10/1/2010 and 9/30/2011 as of July 2012.

Over four-fifth of the children who entered foster care during the quarter were younger than 12 years of age.

Chart 21b: Ages of Children who Entered Care



Of the 1,061 children who entered care, 53 percent were male and 47 percent were female.

Chart 21c: Gender of Children who Entered Care

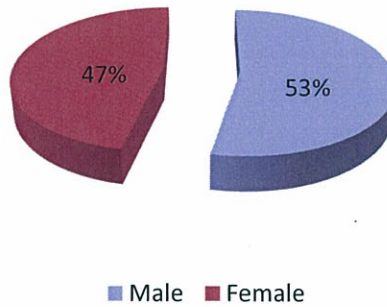


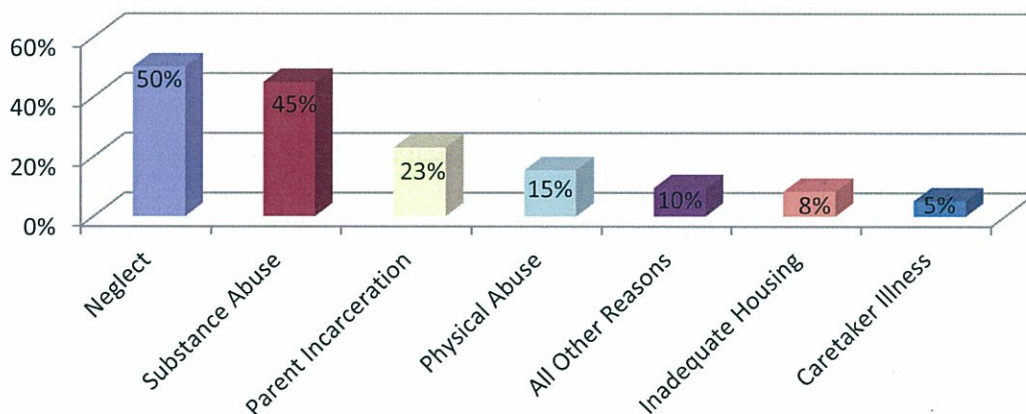
Table 9 displays the reasons for the entry into foster care for the 1,061 children who entered during the quarter. Neglect and substance abuse⁸ were the most prevalent reasons that led to children’s entry into care.

**Table 9: Reasons Children Who Entered Foster Care During the Quarter Were Placed in Foster Care
4th Quarter SFY 2013**

Placement Reason	0 to 1	2 to 5	6 to 11	12 to 15	16 to 18	18+	Total
Neglect	139	148	164	59	22	0	532
Substance Abuse	116	148	144	52	22	0	482
Parent Incarceration	52	66	86	28	12	0	244
Physical Abuse	36	43	47	29	9	0	164
Child’s Behavior	0	0	2	13	10	0	25
Abandonment	4	7	5	3	2	0	21
Inadequate Housing	16	37	26	5	4	0	88
Caretaker Illness	11	11	19	8	6	0	55
Sexual Abuse	1	6	7	8	3	0	25
Truancy	0	0	10	4	2	0	16
Child’s Disability	0	1	2	0	0	0	3
Parent Death	0	1	2	5	0	0	8
Sex Offender	0	0	1	1	0	0	2
Relinquishment	0	0	1	0	1	0	2
Other	0	0	0	0	0	0	0
Teen Parent in Care	2	0	0	0	0	0	2
Total*	377	468	516	215	93	0	1,669

*A child may have more than one reason for entry

Chart 22: Reasons Children Who Entered Care During the Quarter were Placed in Foster Care



⁸ Of the 482 reasons for entry attributed to substance abuse, substance abuse by children accounted for two percent while substance abuse by parents accounted for the balance (98 percent).

Exits from Foster Care

During the quarter, 927 children left foster care, which was an increase from the previous quarter (918).

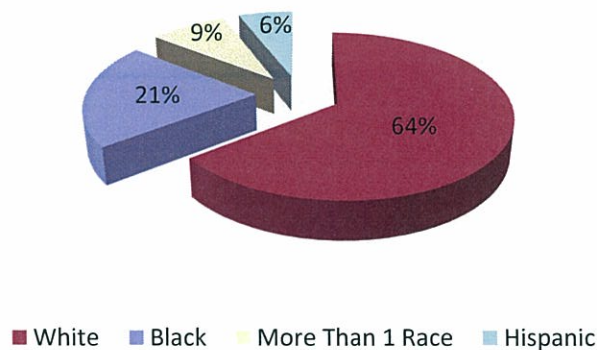
**Table 10: Characteristics of Children Exiting Foster Care During the Quarter
4th Quarter SFY 2013**

Age	Gender	White	Black	Asian	AIAN	NAPI	Hispanic	More Than 1 Race	Total
0 to 1	Female	51	13	0	0	0	10	3	77
	Male	55	17	0	0	0	6	9	87
2 to 5	Female	96	28	0	0	0	8	13	145
	Male	91	26	2	0	0	9	17	145
6 to 11	Female	81	24	0	0	0	10	14	129
	Male	83	22	0	0	0	2	13	120
12 to 15	Female	37	18	0	0	0	1	5	61
	Male	31	16	0	1	0	2	1	51
16 to 18	Female	35	9	0	0	0	5	1	50
	Male	29	11	0	0	0	1	1	42
18+	Female	2	2	0	0	0	1	1	6
	Male	4	6	0	0	0	0	1	11
Total		595	192	2	1	0	55	79	924

*Demographic data have not been entered into CHRIS for three children.

Of the children who exited foster care, 64 percent were white and 21 percent were black. National data indicate that 44 percent of the children who leave foster care are white and 26 percent are black.⁹

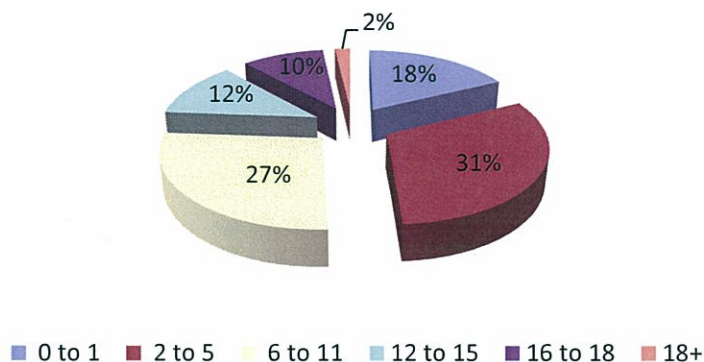
Chart 23a: Race/Ethnicity of Children who Exited Care



⁹ Adoption and Foster Care Analysis and Reporting System (AFCARS) preliminary data submitted for children in foster care between 10/1/2010 and 9/30/2011 as of July 2012.

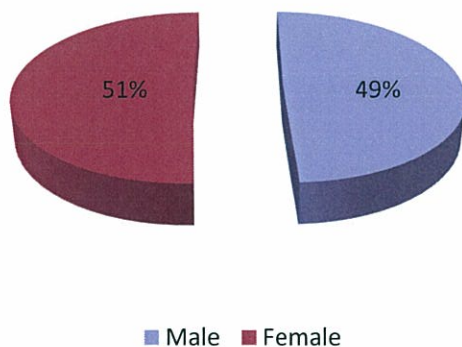
Children ages 11 and younger make up almost three-quarters (76 percent) of the children who left foster care during the quarter.

Chart 23b: Ages of Children who Exited Care



Of the 927 children who exited care during the fourth quarter, 51 percent were female and 49 percent were male.

Chart 23c: Gender of Children who Exited Care

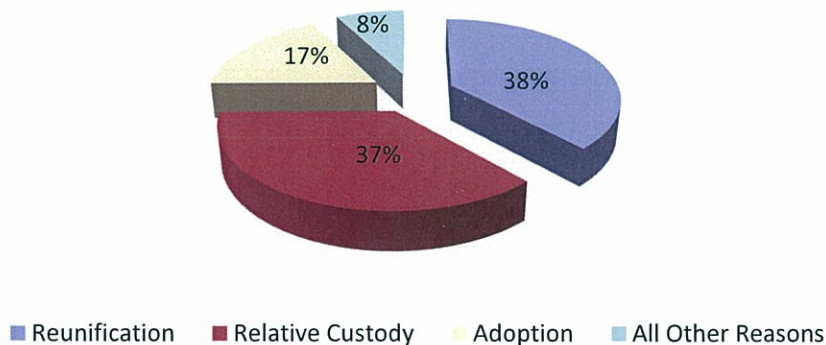


**Table 11: Reasons Children Exited Foster Care by Age
4th Quarter SFY 2013**

Reason	Age						Total
	0 to 1	2 to 5	6 to 11	12 to 15	16 to 18	18+	
Reunification	73	115	79	49	36	0	352
Relative Custody	56	95	113	53	21	0	338
Adoption	32	70	49	6	4	0	161
Child Aged Out	0	0	0	0	29	15	44
Non-Relative Custody	3	10	6	3	1	1	24
Custody Transfer	0	0	0	0	0	0	0
Death of Child	0	0	1	0	0	0	1
Emancipation	0	0	0	0	1	1	2
Guardianship	0	0	1	1	0	0	2
Tribal Jurisdiction	0	0	0	0	0	0	0
Total*	164	290	249	112	92	17	924

The most prevalent reason that children left foster care during the quarter was reunification (38 percent). The second leading reason was relative custody (37 percent). National data indicate that the three most prevalent reasons children leave care are reunification (52 percent), adoption (20 percent) and relative care (8 percent).¹⁰

Chart 24: Most Prevalent Reasons Children Left Care



¹⁰ Adoption and Foster Care Analysis and Reporting System (AFCARS) preliminary data submitted for children in foster care between 10/1/2010 and 9/30/2011 as of July 2012.

Permanency Goals of Children in Foster Care

The Division maintains two primary goals for children in foster care: safety and permanency. The second of these concerns is expressed by setting a permanency goal for each child in foster care within 30 days of the child entering care. Of the 3,930 children in foster care at the end of the quarter, 3,685 (94 percent) had been in care for at least 30 days. Reunification (returning home) remained the most prevalent goal (52 percent) among the children in foster care.

**Table 12: Permanency Goals of Children in Foster Care
3rd Quarter SFY 2013 – 4th Quarter SFY 2013**

	3rd Quarter		4th Quarter		National ¹¹
Return Home	1,907	53%	1,986	54%	52%
Adoption	903	25%	915	25%	25%
APPLA	486	14%	485	13%	N/A
Relative Care	102	3%	98	3%	3%
Guardianship	43	1%	34	1%	4%
Emancipation	0	0%	0	0%	5%
Long Term Care	0	0%	0	0%	6%
Not Yet Established	148	4%	167	5%	5%
Total	3,589	100%	3,685	100%	100%

*Sum of individual percentages may not equal 100% due to rounding.

¹¹ Adoption and Foster Care Analysis and Reporting System (AFCARS) preliminary data submitted for children in foster care between 10/1/2010 and 9/30/2011 as of July 2012.

Length of Stay of Children in Foster Care

Children in foster care at any point during the quarter were less likely to stay in care after 12 months when placed with a relative (37 percent) when compared to those placed in foster care overall (43 percent).

**Table 13a: Length of Stay of Children in Foster Care (Including Relative Care)
4th Quarter SFY 2013**

	Number	Percentage	National ¹²
Less than 30 days	511	11%	12%
30-90 Days	656	14%	15%
3-6 Months	623	13%	
6-12 Months	949	20%	19%
12-24 Months	1,029	21%	25%
24-36 Months	458	9%	12%
36+ Months	619	13%	16%
Total	4,845	100%	100%

*Sum of individual percentages may not equal 100% due to rounding.

**Table 13b: Length of Stay in Foster Care of Children in Relative Care
4th Quarter SFY 2013**

	Number	Percentage
Less than 30 days	25	3%
30-90 Days	131	17%
3-6 Months	138	18%
6-12 Months	203	26%
12-24 Months	192	24%
24-36 Months	69	9%
36+ Months	27	3%
Total*	785	100%

¹² Adoption and Foster Care Analysis and Reporting System (AFCARS) preliminary data submitted for children in foster care between 10/1/2010 and 9/30/2011 as of July 2012.

Number of Placements of Children in Foster Care

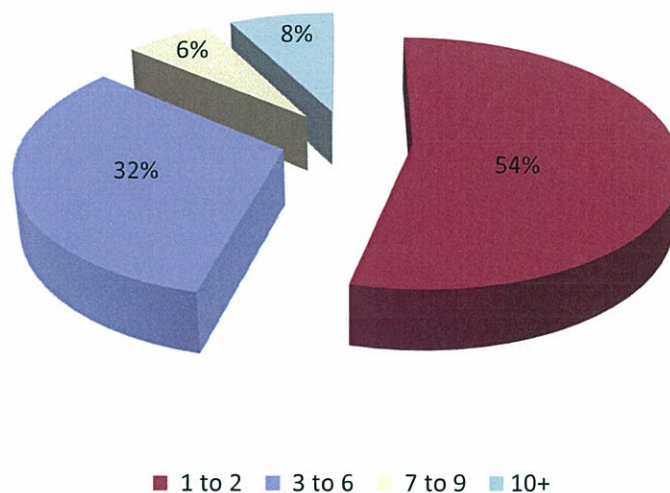
Overall, 54 percent of the children in care at the end of the fourth quarter experienced two or fewer placements. This result is similar to that of the previous quarter. It is not surprising that the likelihood of multiple placements increases the longer children remain in foster care.

**Table 14: Number of Placements of Children in Foster Care
4th Quarter SFY 2013**

	Children in FC Less Than 12 Months		Children in FC 12 and 24 Months		Children in FC More Than 24 Months		Total	
	Count	Percentage	Count	Percentage	Count	Percentage	Count	Percentage
1-2 Placements	1,572	73%	375	46%	175	18%	2,122	54%
3-6 Placements	546	25%	363	44%	362	37%	1,271	32%
7-9 Placements	22	1%	58	7%	161	17%	241	6%
10+ Placements	6	0%	22	3%	268	28%	296	8%
Total*	2,146	100%	818	100%	966	100%	3,930	100%

*Sum of individual percentages may not equal 100% due to rounding.

**Chart 25: Number of Placements for Children in Care at the End
of the Quarter**



Characteristics of Children who Experienced Three or More Placements

At the end of the fourth quarter, 3,930 children were in foster care. Of those, 1,808 children (49 percent) had experienced three or more placements while in care.

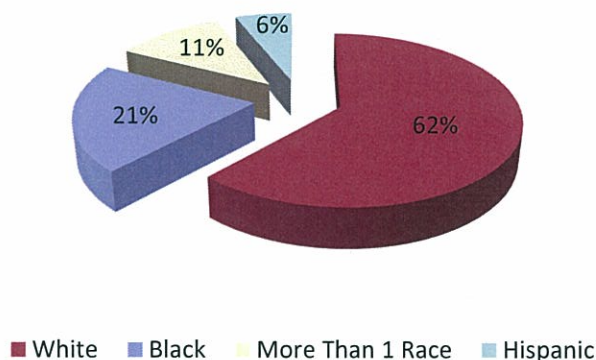
**Table 15: Characteristics of Children who Experienced Three or More Placements
4th Quarter SFY 2013**

Age	Gender	White	Black	Asian	AIAN	NAPI	Hispanic	More Than 1 Race	Total
0 to 1	Female	53	9	0	0	0	3	10	75
	Male	52	14	0	0	0	5	5	76
2 to 5	Female	102	25	0	0	0	10	23	160
	Male	135	25	0	0	0	15	14	189
6 to 11	Female	135	40	0	0	0	11	26	212
	Male	186	43	0	1	0	17	44	291
12 to 15	Female	106	37	0	0	0	10	16	169
	Male	139	52	0	1	0	15	23	230
16 to 18	Female	77	39	0	0	0	6	21	143
	Male	104	57	0	0	0	12	19	192
18+	Female	8	14	0	0	0	4	3	29
	Male	18	16	1	0	0	1	3	39
Total*		1,115	371	1	2	0	109	207	1,805

*Demographic data had not been entered into CHRIS for three children.

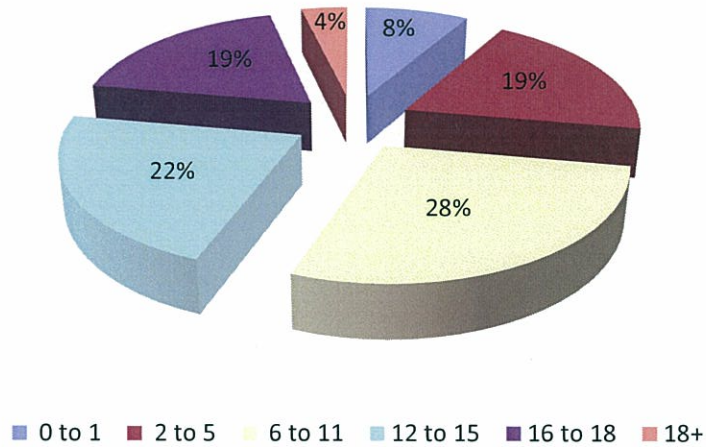
Of the children who experienced three or more placements, 62 percent were white and 21 percent were black.

Chart 26a: Race/Ethnicity of Children who Experienced Three or More Placements



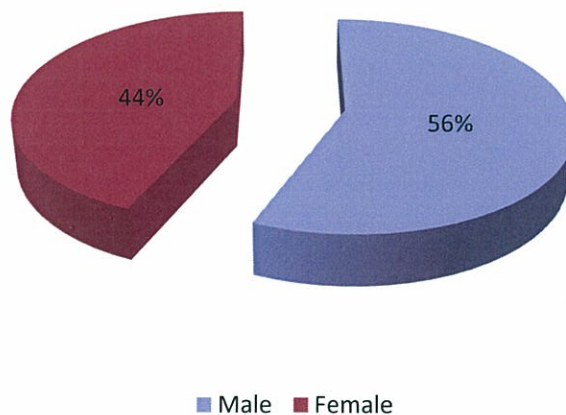
Children between the ages of six and 11 (28 percent) represented the largest group of children who experienced three or more placements, followed by children ages 12 to 15 (22 percent).

Chart 26b: Ages of Children who Experienced Three or More Placements



More male children (56 percent) than female children (44 percent) experienced three or more placements.

Chart 26c: Gender of Children who Experienced Three of more placements

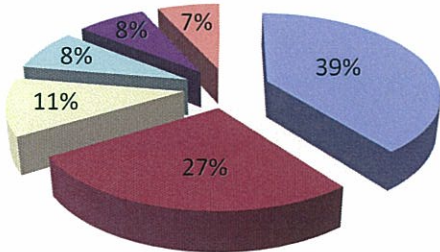


Current Placement of Children in Foster Care

Forty-eight percent of the children in foster care at the end of the fourth quarter were placed in either a non-relative or relative DCFS foster home.

Table 16: Current Placement of Children in Foster Care at the End of the Quarter

Placement	Age						Total
	0 to 1	2 to 5	6 to 11	12 to 15	16 to 18	Over 18	
DCFS Foster Home (Non-Relative)	426	524	344	138	110	10	1,552
DCFS Foster Home (Relative)	58	99	105	37	15	3	317
Provisional Relative Care	64	87	78	29	10	0	268
Therapeutic Foster Home	2	44	151	63	34	2	296
Pre-Adoptive Home (Non-Relative)	50	76	65	18	4	0	213
Pre-Adoptive Home (Relative)	3	5	9	1	0	0	18
Emergency Shelter	1	19	71	54	25	0	170
Residential Facility	9	33	88	135	151	27	443
Youth Services	0	0	0	5	10	2	17
Runaway	0	0	0	2	16	1	19
Trial Home Visit	24	34	63	31	5	0	157
Hospital/Medical	3	1	6	3	3	0	16
SRP CRT	0	0	1	13	2	0	16
Independent Living	0	0	0	0	26	63	89
Incarceration	0	0	0	3	8	0	11
Temporary Placement	6	21	14	17	9	0	67
Sub-Acute CRT	0	0	34	55	33	0	122
Acute CRT	0	0	7	10	4	1	22
SRP Residential Treatment	0	0	0	5	15	0	20
SRP Therapeutic Foster Care	0	0	0	6	6	1	13
Private Agency FFH	25	16	4	0	0	0	45
DDS Placement	0	0	2	2	13	2	19
DDS Service	0	0	3	3	2	0	8
DYS Aftercare	0	0	0	1	3	0	4
Unknown*	3	0	1	3	1	0	8
Total	674	959	1,046	634	505	112	3,930



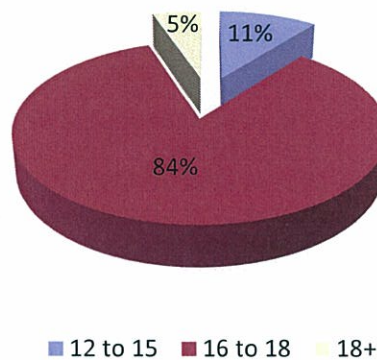
- DCFS Foster Home (Non-Relative)
- All Other Placements
- Residential Facility
- DCFS Foster Home (Relative)
- Therapeutic Foster Home
- Provisional Relative Care

Characteristics of Children on Runaway Status at the End of the Quarter

Nineteen children were on runaway status at the end of the fourth quarter. This was a decrease of three children from the previous quarter (22).

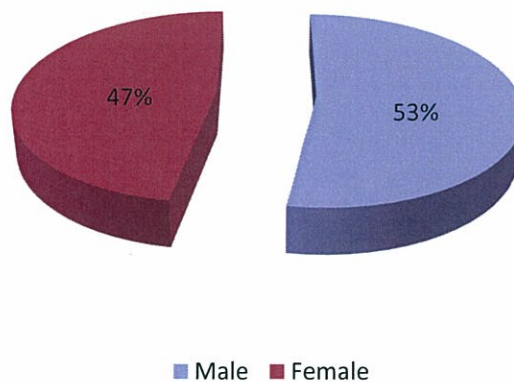
The majority of the children on runaway status (84 percent) were between the ages of 16 and 17.

Chart 28a: Ages of Children on Runaway Status at the End of the Quarter



More male children (53 percent) than female children (47 percent) were on runaway status at the end of the quarter.

Chart 28b: Gender of Children on Runaway Status at the End of the Quarter



Characteristics of Children in Relative Care

During the quarter, 785 children were placed in relative care,¹³ a six percent increase from the previous quarter (738). This number includes children who remained in relative care from previous quarters as well as those who came into relative care during the current quarter. The following table outlines the characteristics of children residing in relative care.

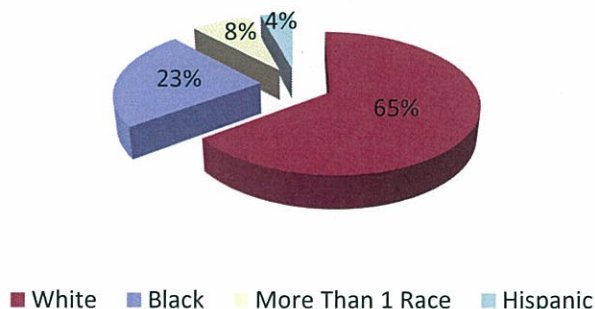
**Table 17: Characteristics of Children in Relative Care
4th Quarter SFY 2013**

Age	Gender	White	Black	Asian	AIAN	NAPI	Hispanic	More Than 1 Race	Total
0 to 1	Female	53	20	0	0	0	4	7	84
	Male	58	15	0	0	0	0	5	78
2 to 5	Female	79	32	0	0	0	7	10	128
	Male	78	32	1	0	0	6	9	126
6 to 11	Female	83	26	0	0	0	3	13	125
	Male	75	29	0	0	0	8	6	118
12 to 15	Female	37	10	0	0	0	2	5	54
	Male	25	7	0	0	0	1	2	35
16 to 18	Female	11	5	0	0	0	2	1	19
	Male	8	2	0	0	0	0	3	13
18+	Female	0	2	0	0	0	0	0	2
	Male	0	2	0	0	0	0	0	2
Total		507	182	1	0	0	33	61	784

*Demographic data had not been entered into CHRIS for one child.

White children represent the highest percentage of children in relative care during the fourth quarter (65 percent).

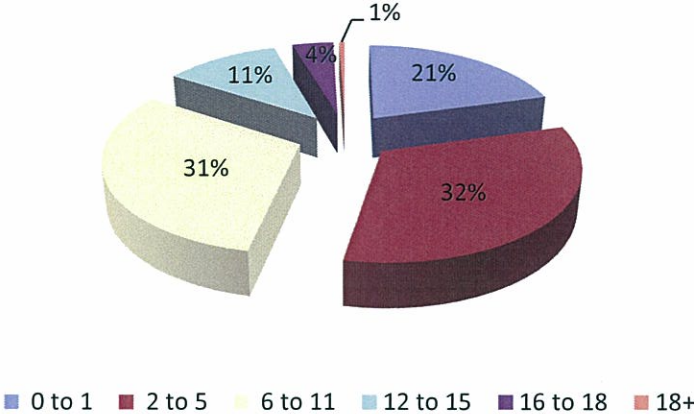
Chart 29a: Race/Ethnicity of Children in Relative Care



¹³ Relative care includes both Provisional (Relative) placements and Licensed Foster Family Homes who served relative children during the quarter.

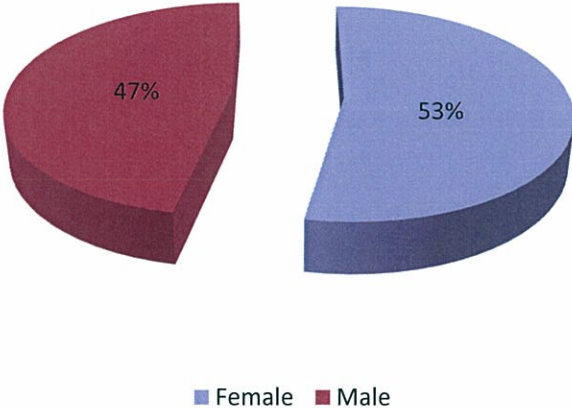
Over 60 percent of the children in relative care are between the ages of two and 11.

Chart 29b: Ages of Children in Relative Care



Fifty-three percent of the children in relative care were female and 47 percent were male.

Chart 29c: Gender of Children in Relative Care



Part III: Description of Population and Services
Section III: Adoption

Characteristics of Children with a Permanency Goal of Adoption at the End of the Quarter

There were 915 children in care at the end of the quarter with a permanency goal of adoption. The table below outlines those children’s characteristics.

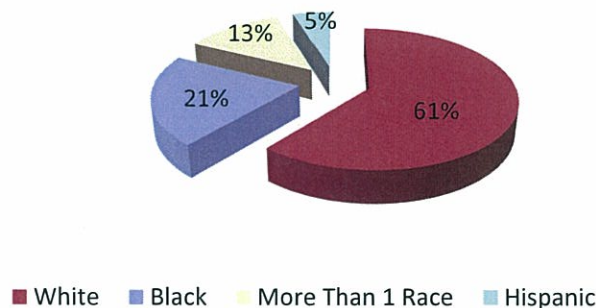
**Table 18: Characteristics of Children with a Permanency Goal of Adoption at the End of the Quarter
 4th Quarter SFY 2013**

Age	Gender	White	Black	Asian	AIAN	NAPI	Hispanic	More Than 1 Race	Total
0 to 1	Female	27	13	0	0	0	2	7	49
	Male	28	12	0	0	0	3	4	47
2 to 5	Female	64	13	0	1	0	5	17	100
	Male	74	32	0	0	0	9	13	128
6 to 11	Female	84	23	0	0	0	8	21	136
	Male	118	28	0	0	0	6	28	180
12 to 15	Female	53	24	0	0	0	4	8	89
	Male	79	28	0	0	0	6	12	125
16 to 18	Female	13	9	0	0	0	2	3	27
	Male	16	10	0	0	0	0	4	30
18+	Female	1	0	0	0	0	0	0	1
	Male	0	0	0	0	0	0	0	0
Total*		557	192	0	1	0	45	117	912

*Demographic data have not been entered into CHRIS for three children.

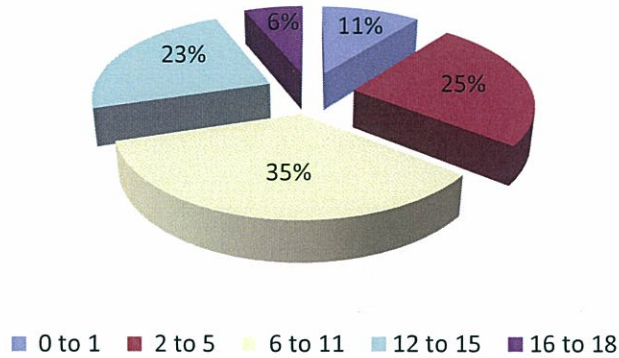
Of the children in care with a permanency goal of adoption at the end of the quarter, 61 percent were white, 21 percent were black, and 13 percent were multiracial.

Chart 30a: Race/Ethnicity of Children with a permanency Goal of Adoption During the Quarter



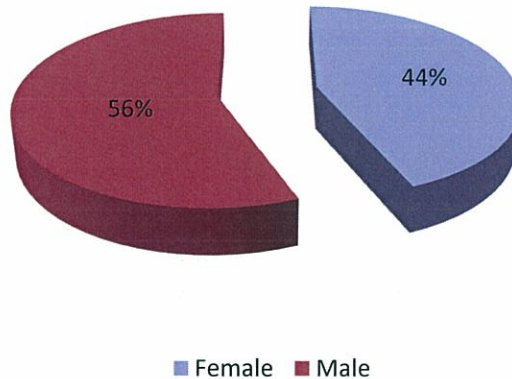
Children between the ages of six and 11 (35 percent) continue to represent the largest age group of children with a permanency goal of adoption.

Chart 30b: Ages of Children with a Permanency Goal of Adoption During the Quarter



More male children (56 percent) than female children (44 percent) had a permanency goal of adoption.

Chart 30c: Gender of Children with a Permanency Goal of Adoption During the Quarter



Characteristics of Children whose Parents have had Parental Rights Terminated at the end of the Quarter

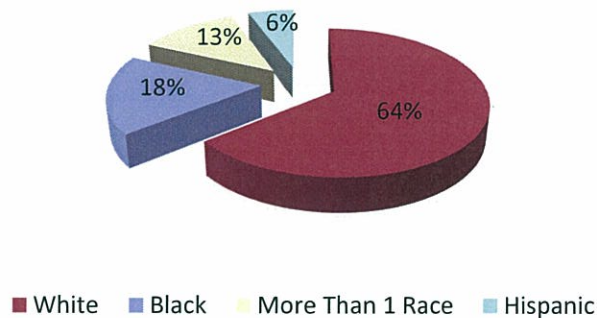
There were 615 children whose parents had their parental rights terminated¹⁴ as of the end of the fourth quarter. The table below outlines the characteristics of those children.

**Table 19: Characteristics of Children whose Parents have had Parental Rights Terminated at the End of the Quarter
4th Quarter SFY 2013**

Age	Gender	White	Black	Asian	AIAN	NAPI	Hispanic	More Than 1 Race	Total
0 to 1	Female	14	3	0	0	0	0	2	19
	Male	18	4	0	0	0	3	2	27
2 to 5	Female	35	6	0	0	0	2	10	53
	Male	44	10	0	0	0	8	12	74
6 to 11	Female	49	7	0	0	0	8	11	75
	Male	86	15	0	0	0	5	13	119
12 to 15	Female	38	12	0	0	0	2	4	56
	Male	58	24	0	0	0	4	9	95
16 to 18	Female	23	12	0	0	0	2	6	43
	Male	30	15	0	0	0	1	8	54
Total*		395	108	0	0	0	35	77	615

Sixty-four percent of the children whose parents had their parental rights terminated at the end of the quarter were white, 18 percent were black, 13 percent were multiracial, and six percent were Hispanic.

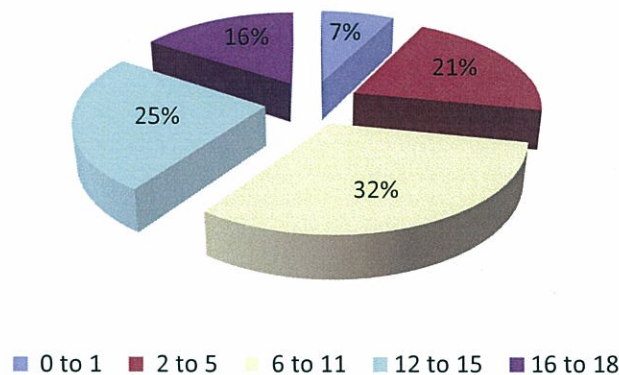
Chart 31a: Race/Ethnicity of Children whose Parents have had Parental Rights Terminated



¹⁴ Both parents' parental rights must be terminated for the child to be counted.

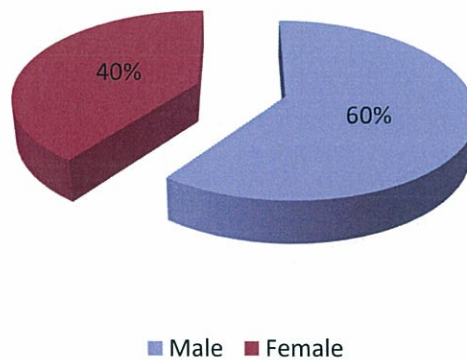
Children between the ages of six and 11 (32 percent) represent the largest group of children whose parents' parental rights had been terminated, followed by those between the ages of 12 and 15 (25 percent).

Chart 31b: Ages of Children whose Parents have had Parental Rights Terminated



Of the children whose parents' rights had been terminated, 60 percent were male and 40 percent were female.

Chart 31c: Gender of Children whose Parents have had Parental Rights Terminated



Characteristics of Children Available for Adoption at the End of the Quarter

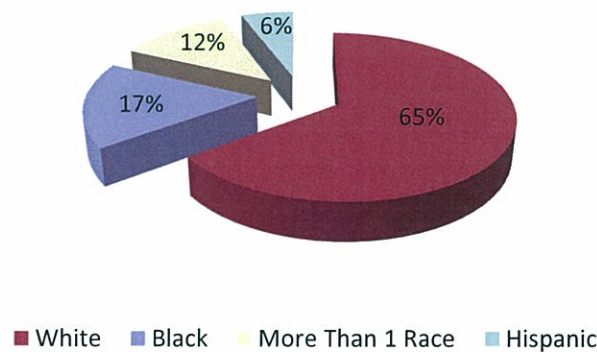
At the end of the fourth quarter, 517 children were available for adoption.¹⁵ Demographic information for children available for adoption, shown in the table below, is very similar to previous quarters.

**Table 20: Characteristics of Children Available for Adoption at the End of the Quarter
4th Quarter SFY 2013**

Age	Gender	White	Black	Asian	AIAN	NAPI	Hispanic	More Than 1 Race	Total
0 to 1	Female	11	3	0	0	0	0	2	16
	Male	15	4	0	0	0	3	2	24
2 to 5	Female	33	5	0	0	0	2	9	49
	Male	39	10	0	0	0	7	11	67
6 to 11	Female	43	7	0	0	0	7	10	67
	Male	85	14	0	0	0	5	13	117
12 to 15	Female	35	11	0	0	0	2	4	52
	Male	55	22	0	0	0	3	8	88
16 to 18	Female	9	6	0	0	0	1	2	18
	Male	11	5	0	0	0	0	3	19
Total		336	87	0	0	0	30	64	517

Of the children available for adoption, 65 percent were white and 17 percent were black.

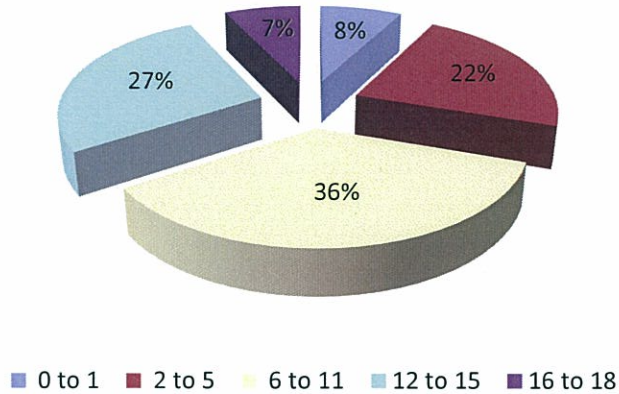
Chart 32a: Race/Ethnicity of Children Available for Adoption at the End of the Quarter



¹⁵ Children available for adoption are defined as children who have two TPR's and a goal of adoption.

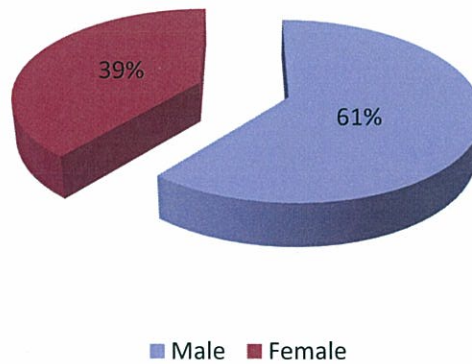
Children between the ages of six and 11 (36 percent) and 12 to 15 (27 percent) represent the largest groups of children available for adoption at the end of the quarter.

Chart 32b: Ages of Children Available for Adoption at the End of the Quarter



More male children (61 percent) than female children (39 percent) were available for adoption.

Chart 32c: Gender of Children Available for Adoption at the End of the Quarter



Current Placements of Children Available for Adoption

More children who were available for adoption at the end of the fourth quarter were placed in DCFS foster homes (31 percent) than in any other type of placement, followed by placement in a pre-adoptive home (25 percent). These results are similar to the previous quarter.

**Table 21: Current Placements of Children Available for Adoption
4th Quarter SFY 2013**

Placement	Number of Children	Percentage*
DCFS Foster Home	161	31%
Pre-Adoptive Home	129	25%
Therapeutic Foster Home	110	21%
Residential Facility	64	12%
Sub-Acute CRT	21	4%
Acute CRT	6	1%
Emergency Shelter	5	1%
SRP CRT	5	1%
DDS Service	4	1%
Temporary Placement	3	0.6%
SRP Therapeutic Foster Care	2	0.4%
Incarceration	2	0.4%
Youth Services	2	0.4%
SRP Residential Treatment	1	0.2%
DDS Supportive Living	1	0.2%
DYS After Care	1	0.2%
Hospital/Medical	0	0.0%
ILP Sponsor	0	0.0%
Total*	517	100%

*The sum of individual percentages may not equal 100% due to rounding.

Characteristics of Children in Pre-adoptive Placements

During the fourth quarter, 402 children were in pre-adoptive homes. This number includes children who entered a pre-adoptive home during previous quarters as well as children who were newly placed in a pre-adoptive home during the current quarter.

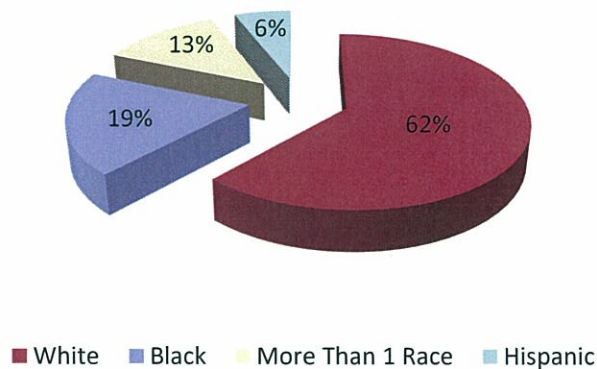
**Table 22: Characteristics of Children in Pre-adoptive Placements
4th Quarter SFY 2013**

Age	Gender	White	Black	Asian	AIAN	NAPI	Hispanic	More Than 1 Race	Total
0 to 1	Female	26	9	0	0	0	2	8	45
	Male	31	11	0	0	0	2	7	51
2 to 5	Female	43	14	0	1	0	3	12	73
	Male	44	13	0	0	0	6	9	72
6 to 11	Female	36	13	0	0	0	5	6	60
	Male	41	12	0	1	0	4	8	66
12 to 15	Female	7	4	0	0	0	1	0	12
	Male	13	0	0	0	0	0	1	14
16 to 18	Female	2	1	0	0	0	1	0	4
	Male	4	0	0	0	0	0	0	4
Total*		247	77	0	2	0	24	51	401

* Demographic data have not been entered into CHRIS for one child.

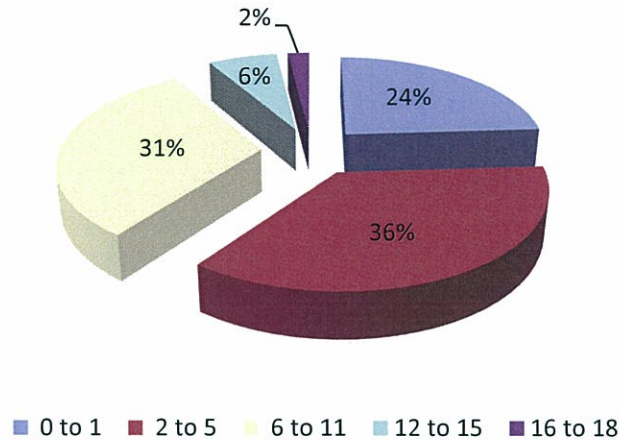
Of the children in pre-adoptive homes during the quarter, 62 percent were white and 19 percent were black.

Chart 33a: Race/Ethnicity of Children Placed in Pre-adoptive Homes During the Quarter



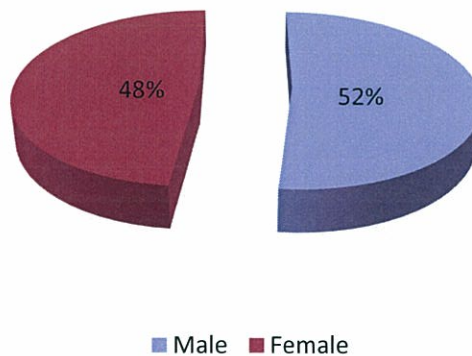
Children between the ages of two and five (36 percent) represent the largest age group of children placed in pre-adoptive homes, followed by those between six and 11 years of age (31 percent).

Chart 33b: Ages of Children Placed in Pre-adoptive Homes During the Quarter



Fifty-two percent of the children in pre-adoptive homes were male and 48 percent were female.

Chart 33c: Gender of Children Placed in Pre-adoptive Homes During the Quarter



Children with Special Needs

Children with special needs are defined as:

- Caucasian and over the age of nine;
- African- American and two years of age or older;
- Members of a sibling group;
- Children who have severe medical or psychological needs that require ongoing treatment; or
- Children at high risk for the development of serious physical, mental or emotional conditions where documentation is provided by a medical professional specializing in the area of the condition for which the child is considered at risk.

During the fourth quarter, 222 children with special needs were in pre-adoptive placements.¹⁶

**Table 23: Children with Special Needs who were Placed in Pre-Adoptive Homes
4th Quarter SFY 2013**

Special Needs Condition	Number of Children
Race	155
Age	181
Member of Sibling Group	100

¹⁶ This number does not take into account children with severe medical and psychological needs. As enhancements are made to the data system to capture this information, it will be provided in future reports.

Characteristics of Children with Finalized Adoptions

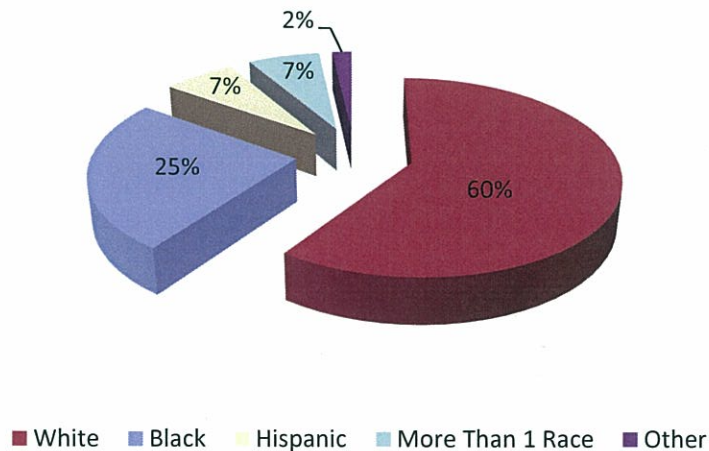
During the quarter, 164 children had their adoptions finalized, a decrease from the previous quarter (213). The following table outlines the characteristics of the children with finalized adoptions.

**Table 24: Characteristics of Children with Finalized Adoptions
4th Quarter SFY 2013**

Age	Gender	White	Black	Asian	AIAN	NAPI	Hispanic	More Than 1 Race	Total
0 to 1	Female	7	3	1	0	0	0	0	11
	Male	14	3	0	0	0	1	2	20
2 to 5	Female	21	9	0	1	0	2	4	37
	Male	22	6	0	0	0	2	3	33
6 to 11	Female	14	7	1	0	0	1	2	25
	Male	12	11	0	0	0	3	0	26
12 to 15	Female	2	1	0	0	0	1	0	4
	Male	4	0	0	0	0	0	0	4
16 to 18	Female	0	1	0	0	0	1	0	2
	Male	2	0	0	0	0	0	0	2
Total		98	41	2	1	0	11	11	164

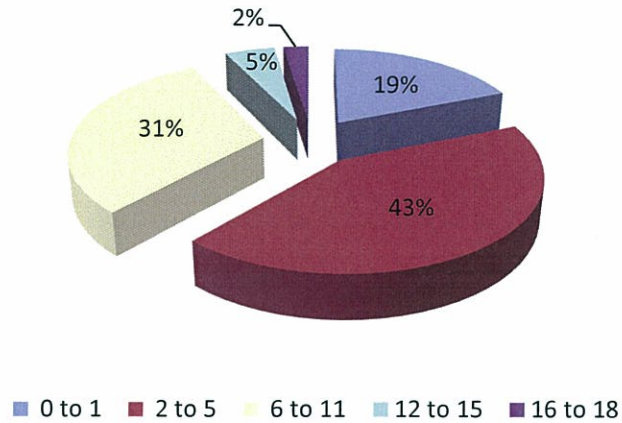
Of the 164 finalized adoptions during the fourth quarter, 60 percent of the adopted children were white, 25 percent were black, 25 percent were black, seven percent were multiracial, and seven percent were Hispanic.

Chart 34a: Race/Ethnicity of Children with Finalized Adoptions



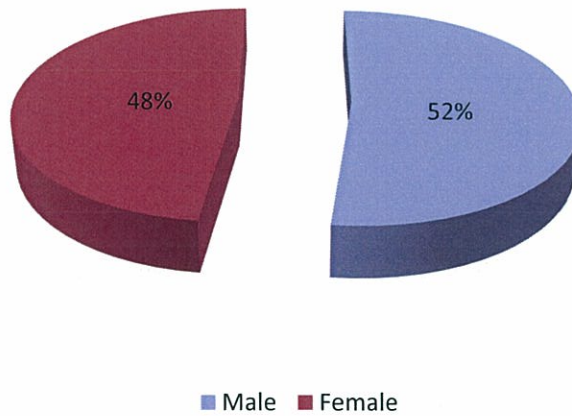
Forty-three percent of the children whose adoptions were finalized during the quarter were between the ages of two and five.

Chart 34b: Ages of Children with Finalized Adoptions



Of the children whose adoptions were finalized during the quarter, 52 percent were male and 48 percent were female.

Chart 34c: Gender of Children with Finalized Adoptions



Subsidized Adoptions

During the fourth quarter, 145 children began receiving adoption subsidies. Of those, 117 children received federally-funded subsidies and 28 received state-funded subsidies.

Characteristics of Children who Received Adoption Subsidies

During the fourth quarter, 5,233 children received adoption subsidies. The following table outlines the demographics of those children.

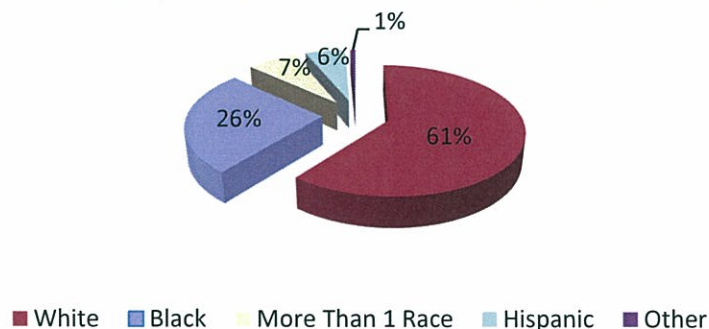
**Table 25: Characteristics of Children Receiving Adoption Subsidies
4th Quarter SFY 2013**

Age	Gender	White	Black	Asian	AIAN	NAPI	Hispanic	More Than 1 Race	Total
0 to 1	Female	22	11	1	0	0	1	2	37
	Male	32	11	0	0	0	1	8	52
2 to 5	Female	302	118	0	5	0	31	54	510
	Male	348	114	2	2	1	29	62	558
6 to 11	Female	631	246	4	2	0	56	88	1,027
	Male	618	267	4	3	1	77	63	1,033
12 to 15	Female	384	190	1	2	1	36	41	655
	Male	371	173	1	0	0	41	26	612
16 to 18	Female	195	113	1	2	0	15	13	339
	Male	212	95	0	1	1	6	8	323
18+	Female	24	11	0	0	0	0	1	36
	Male	32	12	0	0	0	0	0	44
Total*		3,171	1,361	14	17	4	293	366	5,226

*Demographic data had not been entered into CHRIS for seven children.

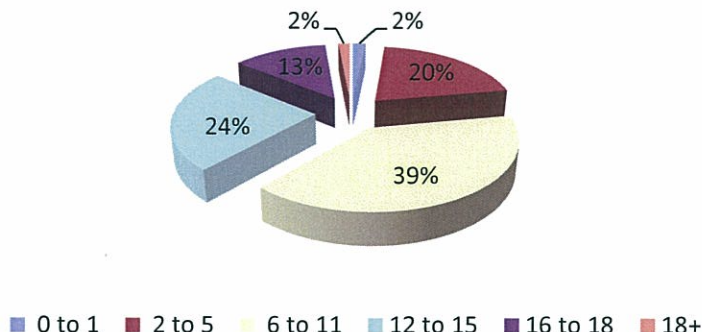
Sixty-one percent of the children who received adoption subsidies were white and 26 percent were black, similar to the previous quarter.

Chart 35a: Race/Ethnicity of Children Receiving Adoption Subsidies



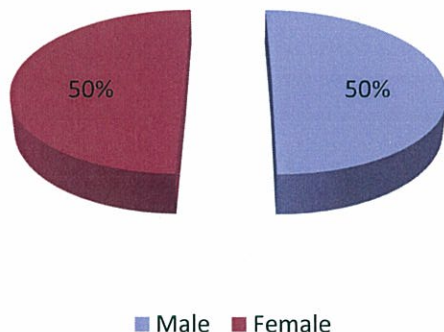
Children between the ages of six and 11 made up the highest share (39 percent) of the children who received adoption subsidies during the quarter.

Chart 35b: Ages of Children Receiving Adoption Subsidies



Of the children who received adoption subsidies during the fourth quarter, 50 percent were female and 50 percent were male.

Chart 35c: Gender of Children Receiving Adoption Subsidies



Pre-Adoptive Homes

At the beginning of the fourth quarter, 678 pre-adoptive homes were available; by the end of the quarter, 689 pre-adoptive homes were available.

**Table 26: Pre-Adoptive Homes
4th Quarter SFY 2013**

	Total Pre-Adoptive Homes
Homes available for children at beginning of the quarter	678
Homes that opened during the quarter	186
Homes that closed during the quarter	175
Homes available at the end of the quarter	689
Homes that had children placed at the end of the quarter	155

Appendix A: Child Fatality

True Fatality Reports

Child	County	Age	Race	Gender	Date of Death	Allegations or Preliminary Cause of Death	Placement at the Time of Incident	Relationship of Alleged Offender to the Child	Agency Conducting the Investigation	Legal Action By the Department	Services Provided Prior to the Incident	Services Provided After the Incident
Gary Hunter, Jr.	Pulaski	<1	Black	Male	6/3/2013	Neglect	In-Home	Family Member	CACD	None	None	None
Joseph Randall-Metheny	Greene	<1	White	Male	6/20/2013	Neglect	In-Home	Family Member	CACD	None	None	None

Unsubstantiated Fatality Reports

Child	County	Age	Race	Gender	Date of Death	Allegations or Preliminary Cause of Death	Placement at the Time of Incident	Relationship of Alleged Offender to the Child	Agency Conducting the Investigation	Legal Action By the Department	Services Provided Prior to the Incident	Services Provided After the Incident
Elisha Vanhoose	Washington	<1	White	Female	5/27/2013	Physical Abuse	In-Home	Unknown	CACD	None	None	None

Pending Fatality Reports

Child	County	Age	Race	Gender	Date of Death	Allegations or Preliminary Cause of Death	Placement at the Time of Incident	Relationship of Alleged Offender to the Child	Agency Conducting the Investigation	Legal Action By the Department	Services Provided Prior to the Incident	Services Provided After the Incident
Andrea Carreno	Madison	15	White	Female	4/28/2013	Neglect	In-Home	Family Member	CACD	None	PS Case	None
Cory Jones	Jefferson	<1	Multi-Ethnic	Male	5/9/2013	Neglect	In-Home	Family Member	CACD	None	None	FC Case
Johnetta Carter	Saline	7	Black	Female	5/12/2013	Neglect	In-Home	Family Member	CACD	None	None	SS Case
Kaitlyn Bedford	Crittenden	<1	Black	Female	5/21/2013	Neglect	In-Home	Family Member	CACD	Children Removed	PS Case	FC Case
Jasean Williams	Washington	<1	Black	Male	6/17/2013	Neglect	In-Home	Family Member	CACD	None	None	SS Case

Appendix B: Near Fatality

True Near Fatality Reports

Child	County	Age	Race	Gender	Date of Near Fatality	Allegations or Preliminary Cause of Near Fatality	Placement at the Time of Incident	Relationship of Alleged Offender to the Child	Agency Conducting the Investigation	Legal Action By the Department	Services Provided Prior to the Incident	Services Provided After the Incident
Child #1	Pulaski	1	Black	Female	5/30/2013	Physical Abuse	In-Home	Family Member	CACD	None	FC Case	FC Case

Unsubstantiated Near Fatality Reports

There were no unsubstantiated near child fatality reports during the fourth quarter of SFY 2013.

Pending Near Fatality Reports

There were no pending near child fatality reports during the fourth quarter of SFY 2013.

Appendix C: Fatalities of Children in Foster Care Who Did Not Receive a Maltreatment Investigation

Child	County	Age	Race	Gender	Date of Death	Preliminary Cause of Death	Placement at the Time of Incident	Legal Action By the Department	Services Provided Prior to the Incident	Services Provided After the Incident
Child #3	Benton	9	White	Female	5/19/2013	Cardiac Arrest	Foster Care	None	Foster Care	None

Appendix D: Summary of Foster Care Maltreatment Reports

Foster Care Maltreatment Reports

**Characteristics of Children in Foster Care Involved in Allegations of Maltreatment
4th Quarter SFY 2013**

One hundred and eleven reports of alleged maltreatment, involving 134 children in foster care,¹⁷ were received by the hotline during the fourth quarter of SYF 2013.

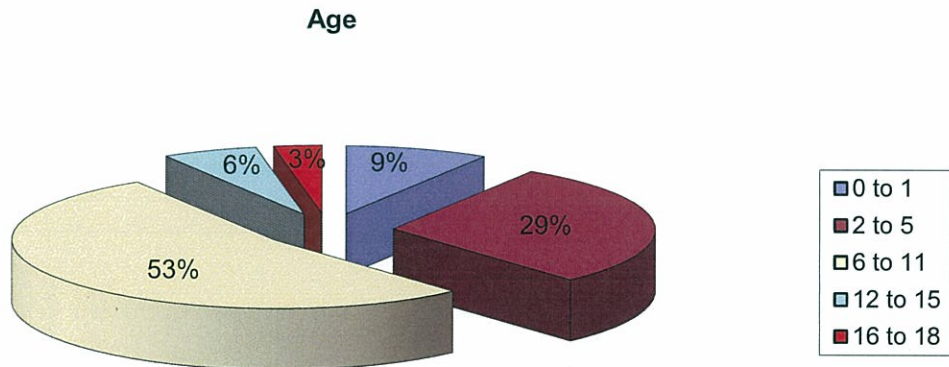
In 27 reports involving 34 children, foster parents¹⁸ were identified as the alleged offenders. As displayed by the following chart, three of those reports were found to be true. Two of the homes were subsequently closed and one was made unavailable pending an appeal.

**Foster Home Maltreatment Reports
4th Quarter SFY 2013**

True	Unsubstantiated	Pending
3	23	1

All allegations of maltreatment concerning foster homes are investigated by the Crimes Against Children Division (CACD) of the Arkansas State Police. DCFS staff do not actively participate in the investigation of these reports. Allegations of maltreatment regarding foster homes require the agency to assess the safety of all children residing in the home.

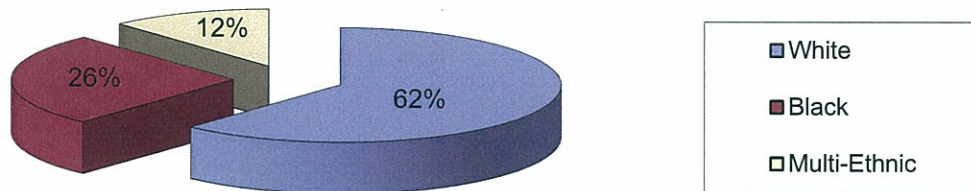
The following charts describe the characteristics of the 34 foster children involved in allegations of maltreatment—with foster parents as the alleged offenders.



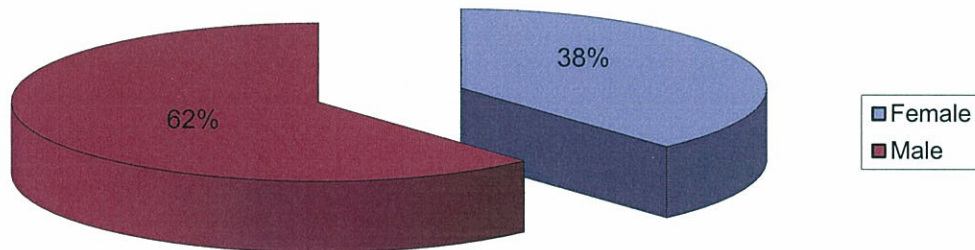
¹⁷ A maltreatment report can include more than one child.

¹⁸ This includes foster family homes and therapeutic foster homes

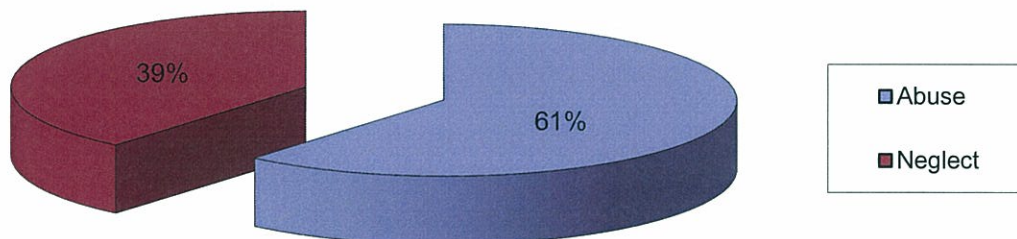
Race



Gender



Allegation



County

County	Number of Children Involved in Maltreatment Report	County	Number of Children Involved in Maltreatment Report
Sebastian	5	Cross	1
Saline	4	Faulkner	1
Pulaski	4	Garland	1
Lonoke	3	Arkansas	1
Benton	3	Lawrence	1
Clay	2	Washington	1
Miller	2	Pope	1
Craighead	2	Howard	1
Boone	1		

Appendix E: Reasons Foster Family Homes Closed

Area	County	Total	DHS Request	Family No Longer Interested	Non-Compliance/Failed Re-Evaluation	Other	Provider End Dated	Provider Request	Provider/Servicees No Longer Needed	Death of Parent	Founded Abuse/Neglect
1	Benton (Bentonville)	7	0	1	0	3	2	1	0	0	0
1	Carroll (Berryville)	2	0	0	0	1	1	0	0	0	0
1	Madison (Huntsville)	2	0	0	0	1	1	0	0	0	0
1	Washington (Fayetteville)	10	0	0	0	2	8	0	0	0	0
	Area Total	21	0	1	0	7	12	1	0	0	0
2	Crawford (Van Buren)	7	0	0	1	2	0	4	0	0	0
2	Franklin (Ozark)	2	0	0	0	0	0	2	0	0	0
2	Johnson (Clarksville)	2	0	0	0	0	1	1	0	0	0
2	Logan (Booneville)	0	0	0	0	0	0	0	0	0	0
2	Logan (Paris)	0	0	0	0	0	0	0	0	0	0
2	Scott (Waldron)	0	0	0	0	0	0	0	0	0	0
2	Sebastian (Fort Smith)	5	0	0	0	1	1	3	0	0	0
2	Yell (Danville)	0	0	0	0	0	0	0	0	0	0
	Area Total	16	0	0	1	3	2	10	0	0	0
3	Clark (Arkadelphia)	0	0	0	0	0	0	0	0	0	0
3	Garland (Hot Springs)	3	0	0	0	0	2	1	0	0	0
3	Hot Spring (Mavern)	0	0	0	0	0	0	0	0	0	0
3	Howard (Nashville)	0	0	0	0	0	0	0	0	0	0
3	Montgomery (Mount Ida)	0	0	0	0	0	0	0	0	0	0
3	Perry (Perryville)	0	0	0	0	0	0	0	0	0	0
3	Pike (Murfreesboro)	0	0	0	0	0	0	0	0	0	0
3	Polk (Mena)	2	0	0	0	1	0	1	0	0	0
3	Saline (Benton)	8	0	1	0	0	2	4	1	0	0
	Area Total	13	0	1	0	1	4	6	1	0	0
4	Columbia (Magnolia)	0	0	0	0	0	0	0	0	0	0
4	Hempstead (Hope)	0	0	0	0	0	0	0	0	0	0
4	Lafayette (Lew isville)	0	0	0	0	0	0	0	0	0	0
4	Little River (Ashdown)	1	0	0	0	0	1	0	0	0	0
4	Miller (Texarkana)	0	0	0	0	0	0	0	0	0	0
4	Nevada (Prescott)	0	0	0	0	0	0	0	0	0	0
4	Ouachita (Camden)	1	0	0	0	0	0	1	0	0	0
4	Sevier (DeQueen)	0	0	0	0	0	0	0	0	0	0
4	Union (B Dorado)	1	0	0	0	0	1	0	0	0	0
	Area Total	3	0	0	0	0	2	1	0	0	0
5	Baxter (Mountain Home)	0	0	0	0	0	0	0	0	0	0
5	Boone (Harrison)	1	0	0	0	0	0	0	1	0	0
5	Conway (Morrilton)	1	0	0	0	0	1	0	0	0	0
5	Faulkner (Conway)	5	0	0	0	0	5	0	0	0	0
5	Marion (Yellville)	0	0	0	0	0	0	0	0	0	0
5	Newton (Jasper)	0	0	0	0	0	0	0	0	0	0
5	Pope (Russellville)	0	0	0	0	0	0	0	0	0	0
5	Searcy (Marshall)	0	0	0	0	0	0	0	0	0	0
5	Van Buren (Clinton)	2	0	0	0	0	0	2	0	0	0
	Area Total	9	0	0	0	0	6	2	1	0	0
6	Pulaski	0	0	0	0	0	0	0	0	0	0
6	Pulaski (East)	2	0	0	1	1	0	0	0	0	0
6	Pulaski (Jacksonville)	5	0	0	0	0	4	1	0	0	0
6	Pulaski (North)	4	1	0	0	0	2	1	0	0	0
6	Pulaski (South)	12	1	0	0	1	6	4	0	0	0
6	Pulaski (Southwest)	4	1	0	0	0	3	0	0	0	0
	Area Total	27	3	0	1	2	15	6	0	0	0

QUARTERLY PERFORMANCE REPORT – APPENDICES

Area	County	Total	DHS Request	Family No Longer Interested	Non-compliance/Failed Re-Evaluation	Other	Provider End Dated	Provider Request	Provider/Services No Longer Needed	Death of Parent	Founded Abuse/Neglect
7	Bradley (Warren)	0	0	0	0	0	0	0	0	0	0
7	Calhoun (Hampton)	0	0	0	0	0	0	0	0	0	0
7	Cleveland (Rison)	0	0	0	0	0	0	0	0	0	0
7	Dallas (Fordyce)	1	0	0	0	1	0	0	0	0	0
7	Grant (Sheridan)	3	0	1	0	0	1	1	0	0	0
7	Jefferson (Pine Bluff)	3	0	0	0	0	1	2	0	0	0
7	Lincoln (Star City)	0	0	0	0	0	0	0	0	0	0
7	Lonoke (Lonoke)	5	0	0	0	0	3	2	0	0	0
7	Prairie (DeValls Bluff)	0	0	0	0	0	0	0	0	0	0
	Area Total	12	0	1	0	1	5	5	0	0	0
8	Clay (Figgott & Corning)	0	0	0	0	0	0	0	0	0	0
8	Craighead (Jonesboro)	3	0	0	0	0	1	1	1	0	0
8	Fulton (Salem)	2	0	0	0	0	2	0	0	0	0
8	Greene (Paragould)	1	0	0	0	1	0	0	0	0	0
8	Izard (Melbourne)	1	0	0	0	0	1	0	0	0	0
8	Lawrence (Walnut Ridge)	0	0	0	0	0	0	0	0	0	0
8	Mississippi (Blytheville)	0	0	0	0	0	0	0	0	0	0
8	Mississippi (Osceola)	0	0	0	0	0	0	0	0	0	0
8	Randolph (Pocahontas)	0	0	0	0	0	0	0	0	0	0
8	Sharp (Ash Flat)	2	0	0	0	0	2	0	0	0	0
	Area Total	9	0	0	0	1	6	1	1	0	0
9	Cleburne (Heber Springs)	0	0	0	0	0	0	0	0	0	0
9	Crittenden (West Memphis)	2	0	0	0	0	2	0	0	0	0
9	Cross (Wynne)	1	0	1	0	0	0	0	0	0	0
9	Independence (Batesville)	0	0	0	0	0	0	0	0	0	0
9	Jackson (Newport)	0	0	0	0	0	0	0	0	0	0
9	Poinsett (Harrisburg)	0	0	0	0	0	0	0	0	0	0
9	Stone (Mountain View)	0	0	0	0	0	0	0	0	0	0
9	White (Searcy)	4	0	0	0	0	4	0	0	0	0
9	Woodruff (Augusta)	0	0	0	0	0	0	0	0	0	0
	Area Total	7	0	1	0	0	6	0	0	0	0
10	Arkansas (Dewitt)	0	0	0	0	0	0	0	0	0	0
10	Arkansas (Stuttgart)	0	0	0	0	0	0	0	0	0	0
10	Ashley (Hamburg)	0	0	0	0	0	0	0	0	0	0
10	Chicot (Lake Village)	0	0	0	0	0	0	0	0	0	0
10	Desha (McGehee)	0	0	0	0	0	0	0	0	0	0
10	Drew (Monticello)	0	0	0	0	0	0	0	0	0	0
10	Lee (Marianna)	0	0	0	0	0	0	0	0	0	0
10	Monroe (Brinkley)	0	0	0	0	0	0	0	0	0	0
10	Monroe (Clarendon)	0	0	0	0	0	0	0	0	0	0
10	Phillips (Helena)	0	0	0	0	0	0	0	0	0	0
10	St. Francis (Forrest City)	0	0	0	0	0	0	0	0	0	0
	Area Total	0	0	0	0	0	0	0	0	0	0
99	Out of State	2	1	0	0	0	1	0	0	0	0
	Statewide Total	119	4	4	2	15	59	32	3	0	0

ⁱ Other includes foster families that have moved out of state, divorced, or became a Therapeutic Foster Home.