

Department of Human Services

Division of Youth Services

Quarterly Performance Report

In Compliance with Act 1222 of 1995

Report Period October-December 2013



Executive Summary

October-December 2013

In the second quarter of FY 2014, the number of juvenile offenders in state custody increased from 694 reported in the previous quarter to 721 in the reporting quarter.

For youth committed during this quarter, basic demographic characteristics remain unchanged. The youth committed to custody are predominately male (87%). Over half of the youth (57%) were committed this quarter for misdemeanors or violation offenses. Over half (64%) were sixteen (16) years of age or older at the time of commitment.

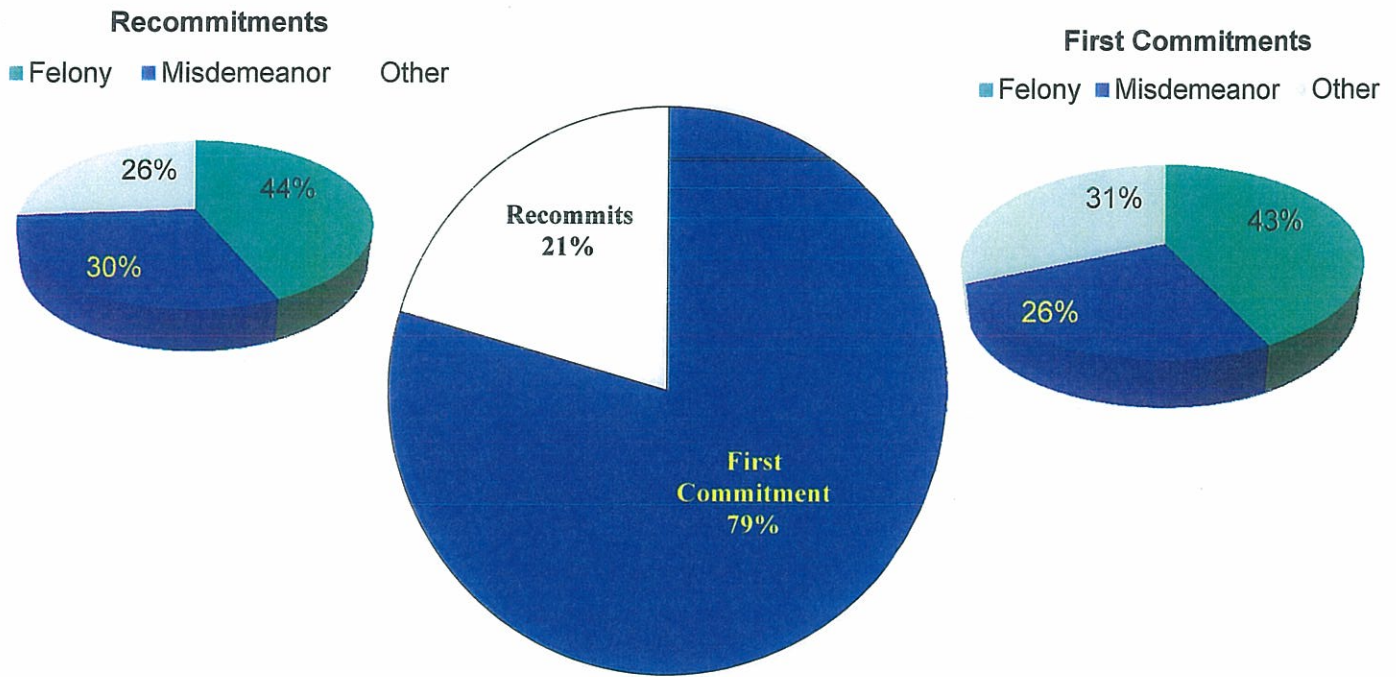
In the second quarter, fifteen (15) incidents of suspected abuse or neglect were referred to the Arkansas State Police. Of the fifteen (15) incidents, the Arkansas State Police determined six (6) merited an investigation. The status of the investigations is four (4) unfounded and two (2) remain pending.

Demographics

October- December, 2013

Chart 1: Commitments

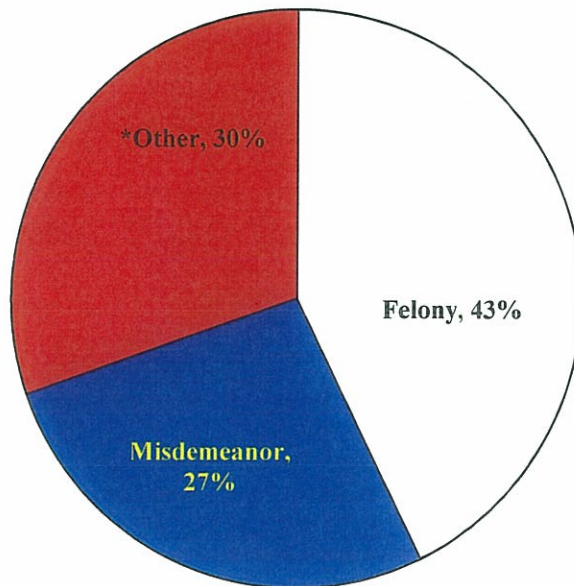
All Juveniles Committed During Reporting Quarter



Recommitments encompass all juveniles who were previously committed to DYS and received another order of commitment during the quarter.

Chart 2: Commitments by Offense

For Juveniles Committed During Reporting Quarter



* Starting mid October 2012, DYS is able to more accurately denote the youth committed for revocation of probation, probation violations, and aftercare violations.

Demographics

October – December, 2013

Chart 3: Commitments by Race For Juveniles Committed During Reporting Quarter

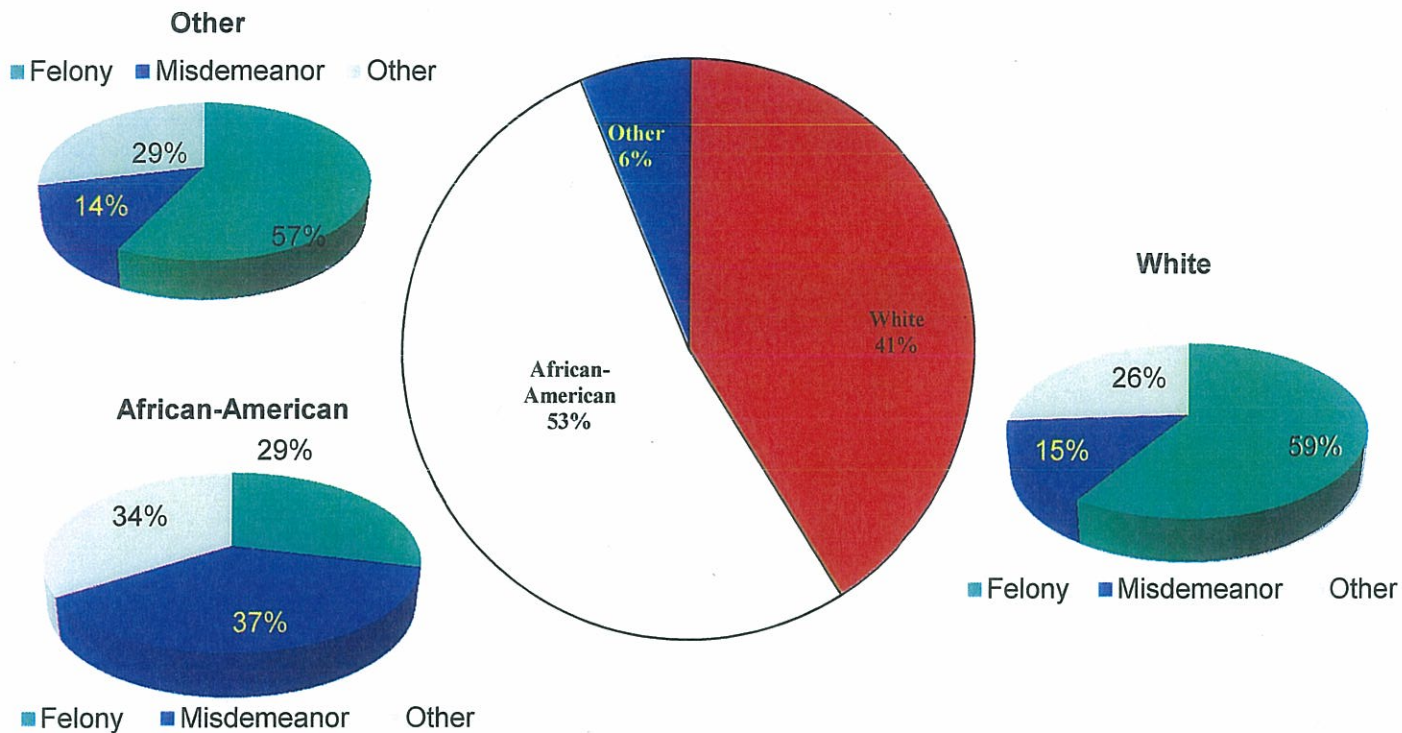
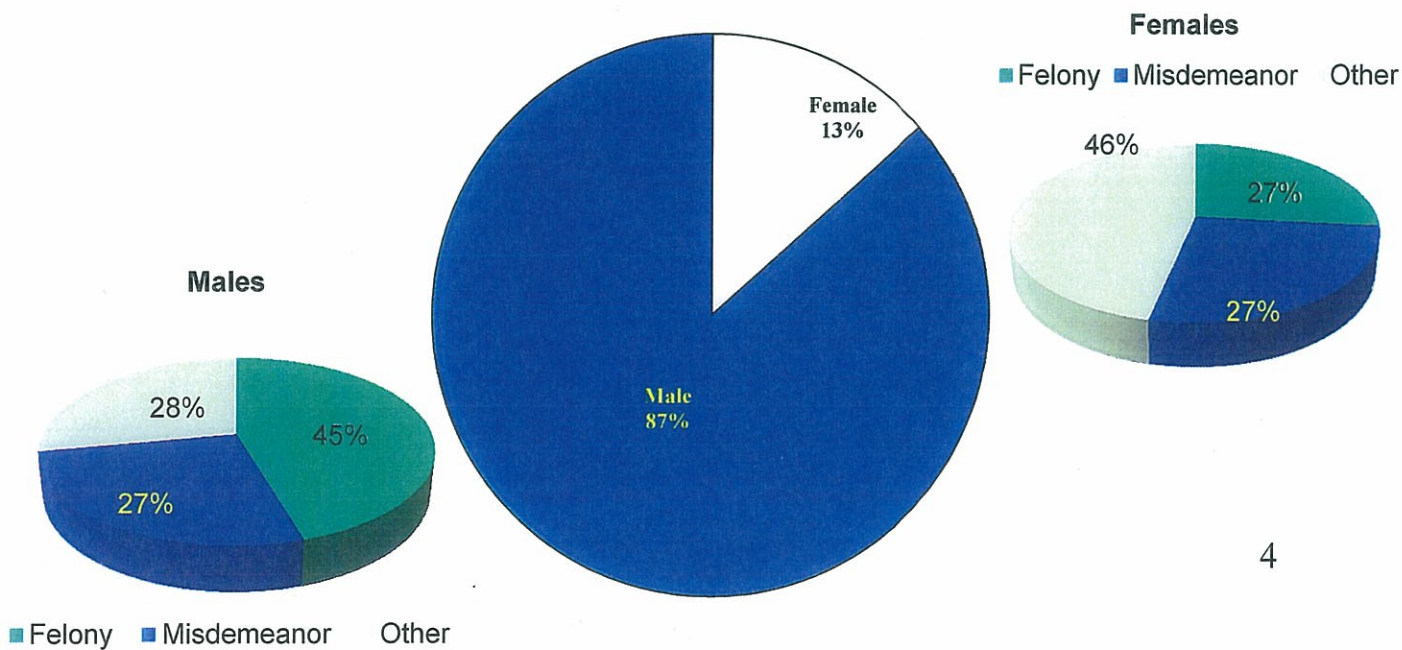


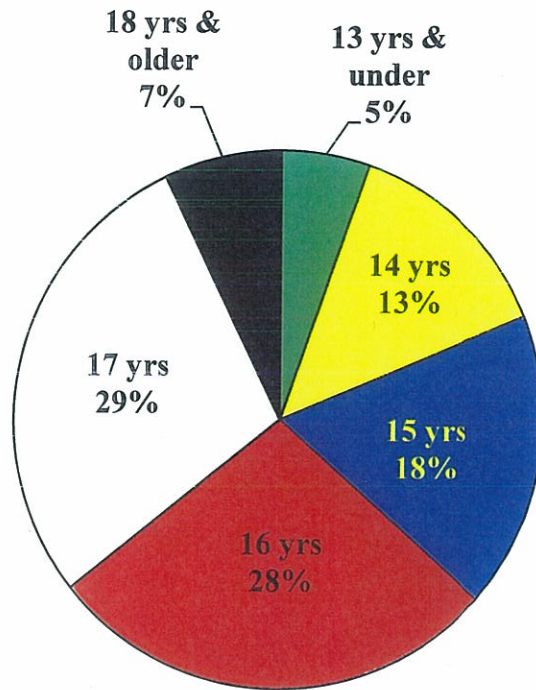
Chart 4: Commitments by Gender For Juveniles Committed During Reporting Quarter



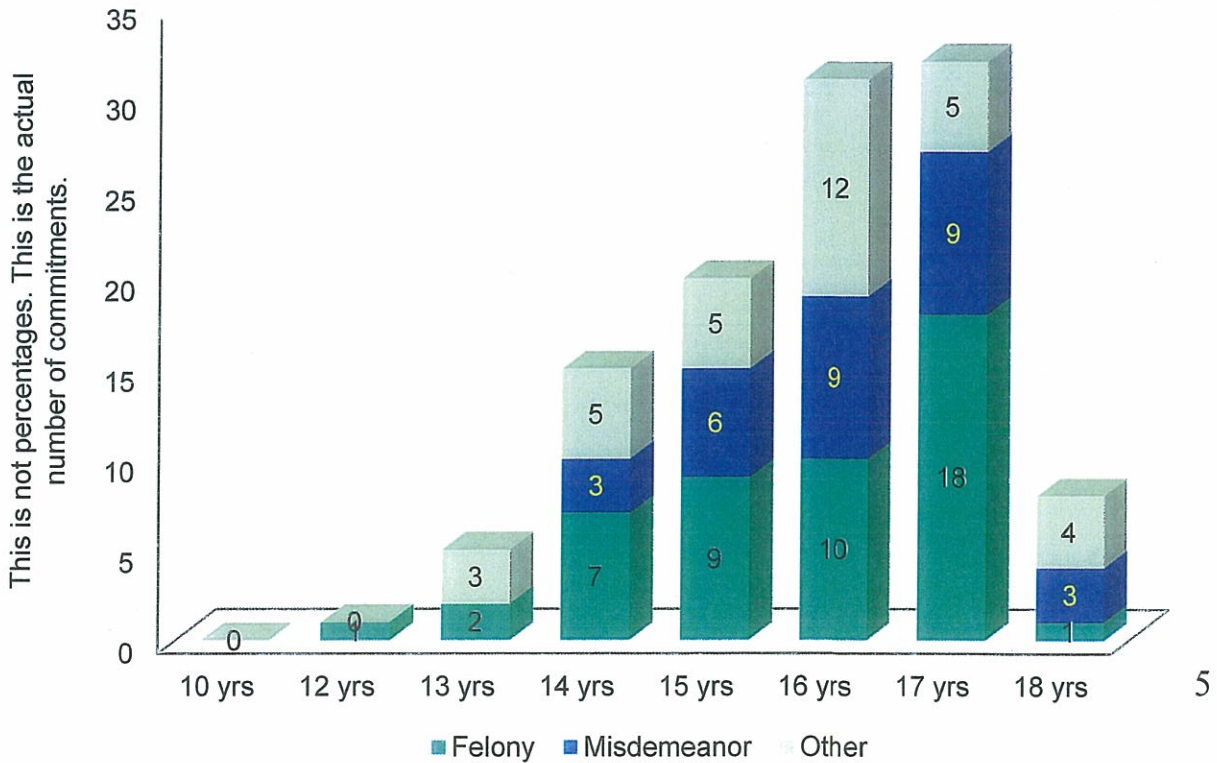
Demographics

October – December, 2013

**Chart 5: Commitments by Age
For Juveniles Committed During Reporting Quarter**



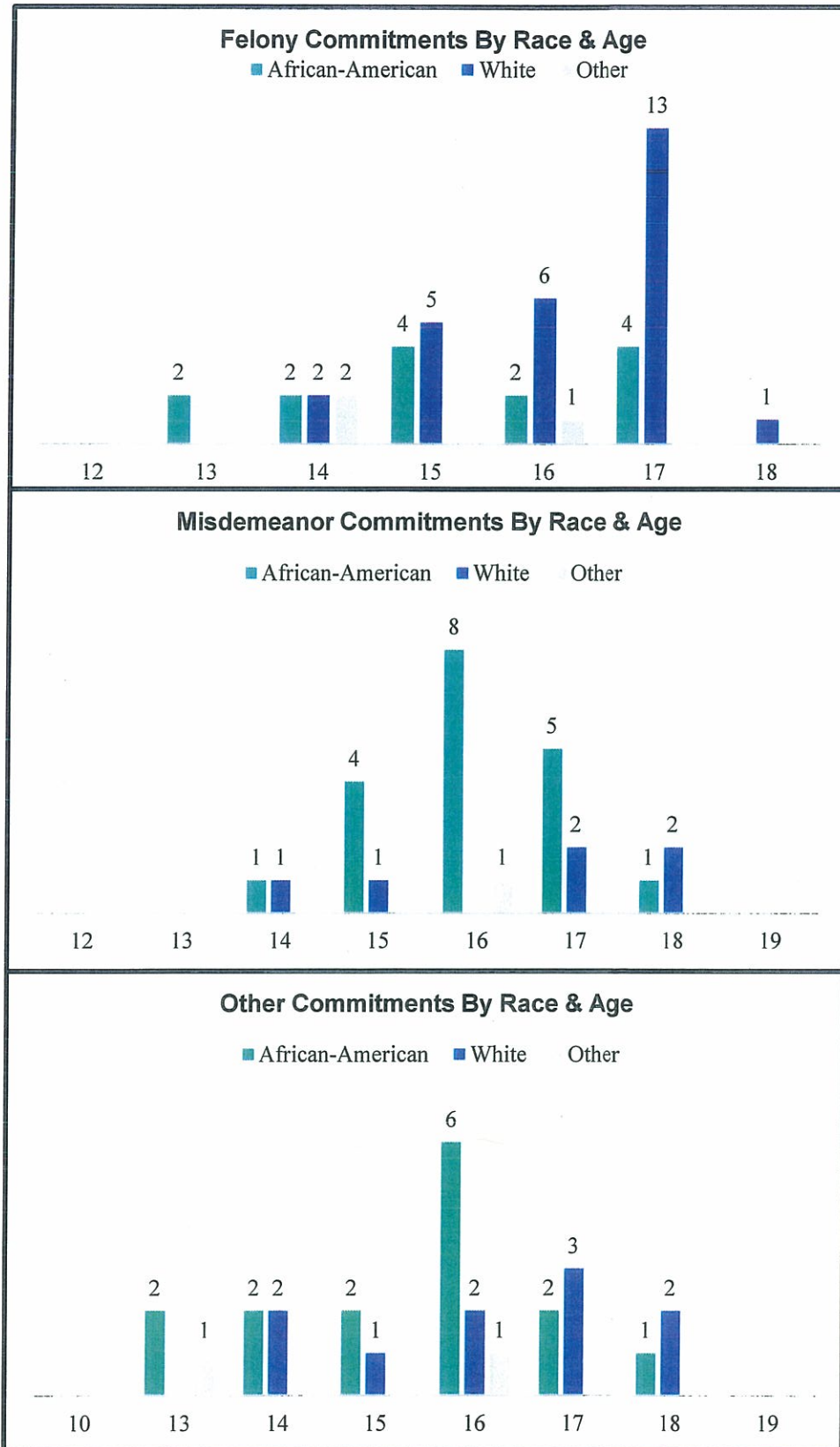
**Chart 6: Offenses by Age
For Juveniles Committed During Reporting Quarter**



Demographics

October – December, 2013

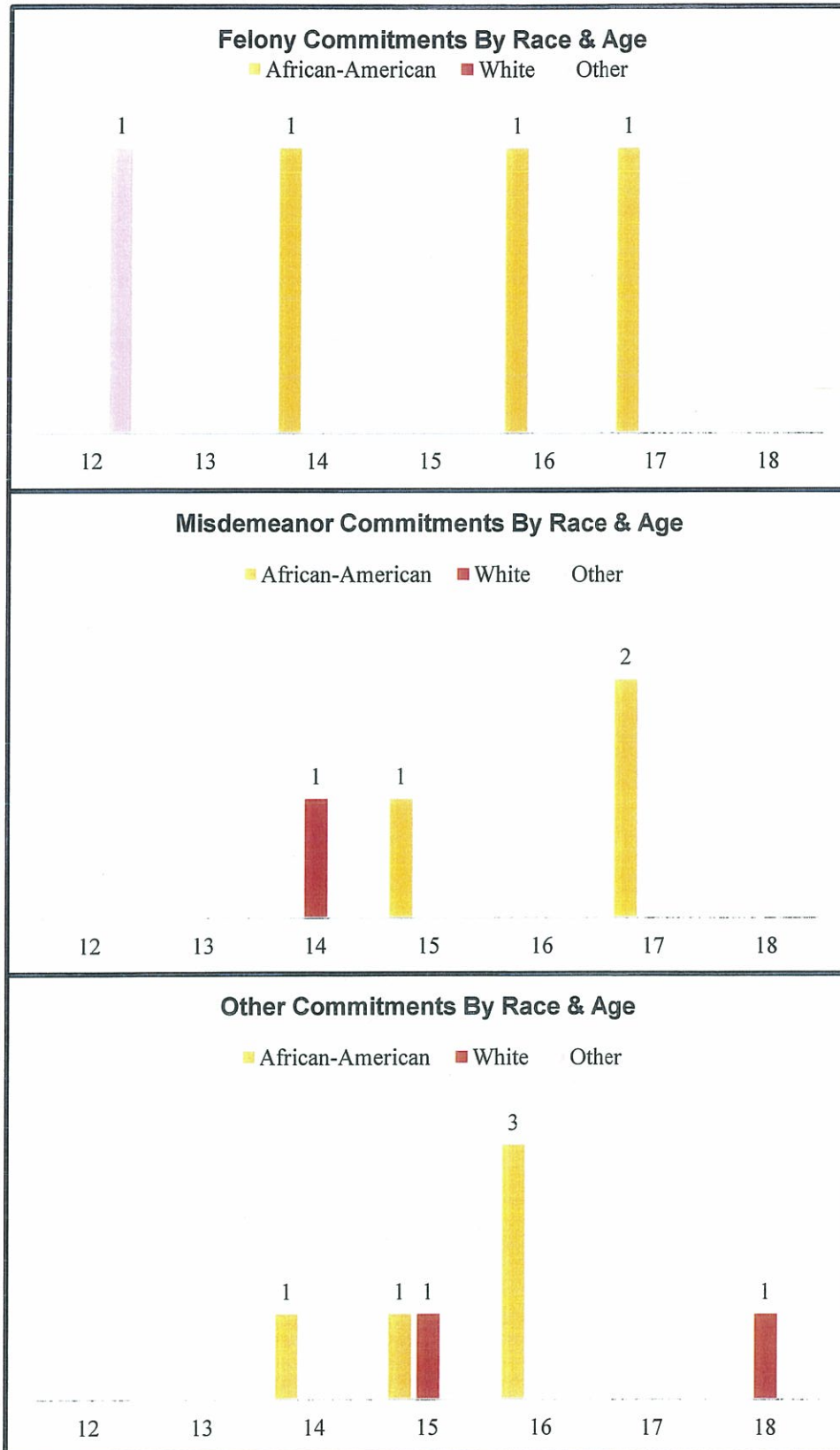
Chart 7: Number of Males Committed by Offense For Juveniles Committed During Reporting Quarter



Demographics

October – December, 2013

Chart 8: Number of Females Committed by Offense For Juveniles Committed During Reporting Quarter

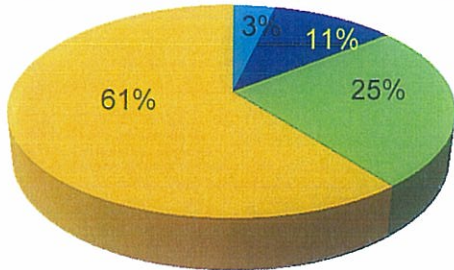


Demographics October – December, 2013

Chart 9: Commitments by Person Crimes* For Juveniles Committed During Reporting Quarter

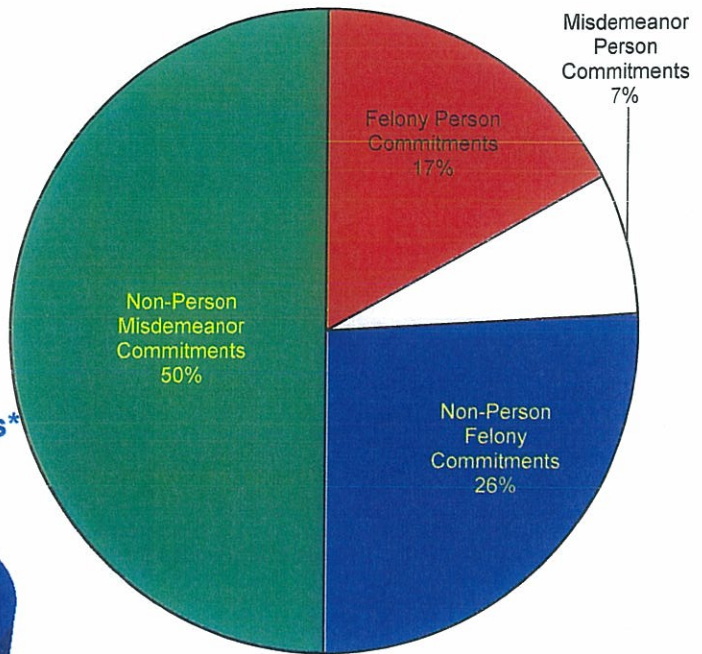
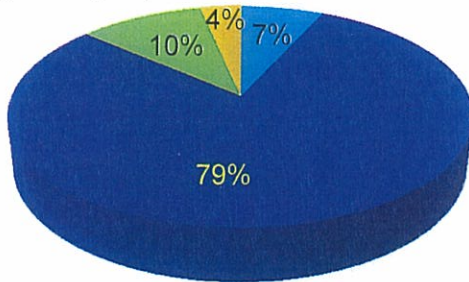
All Non-Person Misdemeanor Commitments*

■ Drug ■ Property ■ Public Order ■ Misc



All Non-Person Felony Commitments*

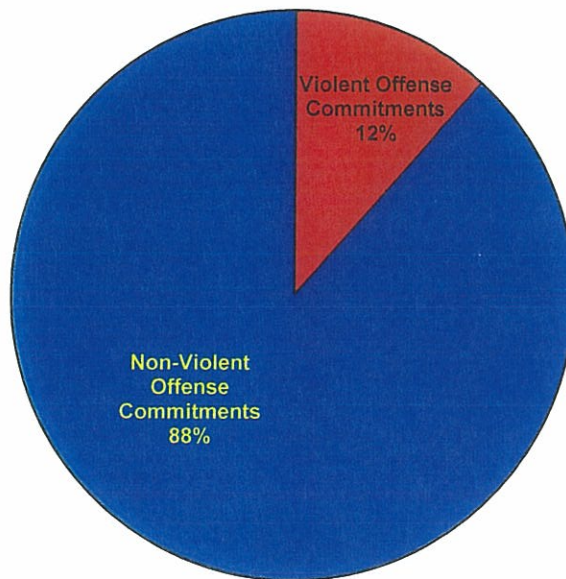
■ Drug ■ Property ■ Public Order ■ Misc



* For a listing of the charges by each category, please refer to Appendix A.

Chart 10: Violent* Vs. Non-Violent Offense Commitments For Juveniles Committed During Reporting Quarter

*These are Part I UCR violent offenses. The Federal Bureau of Investigation defines violent crimes as murder/ manslaughter, rape, robbery and aggravated assault.



Demographics October – December, 2013

Chart 11: Releases For Reporting Quarter

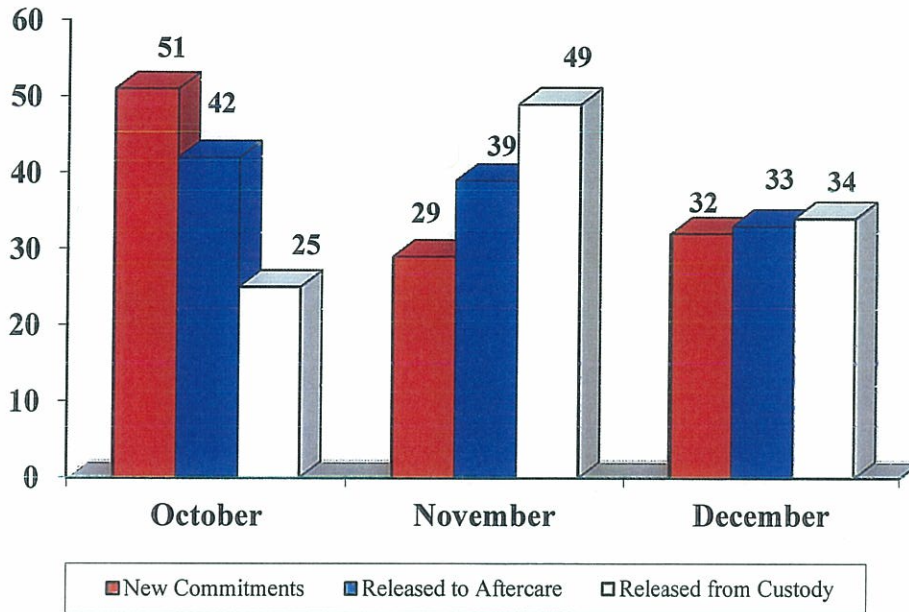
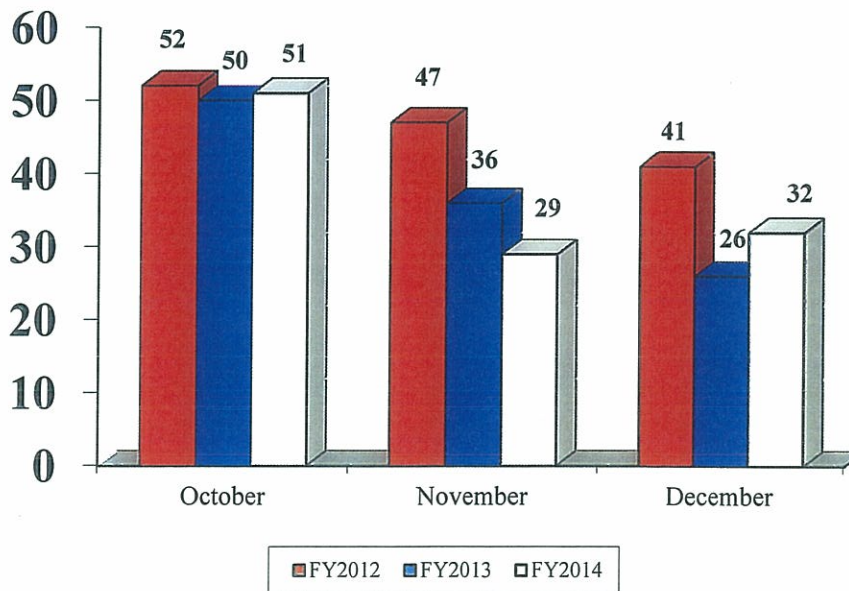


Chart 12: Commitments by Month

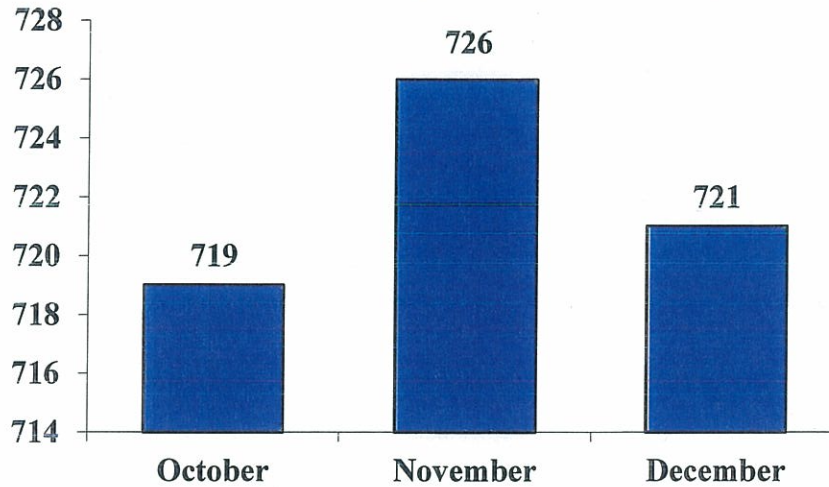
This is a comparison of commitment for this quarter to same time period in previous years.



Demographic Trends

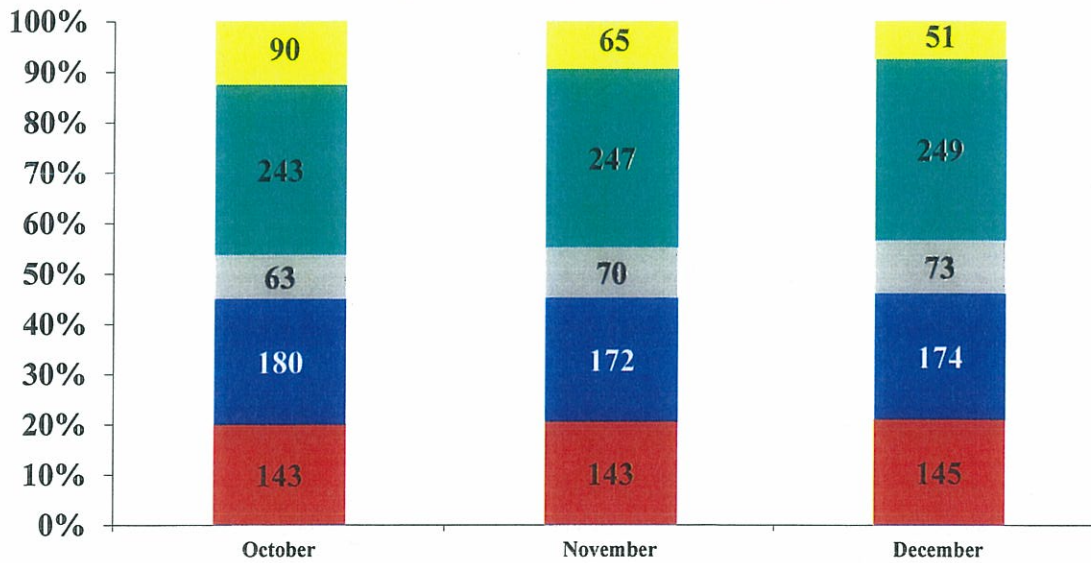
October – December, 2013

Chart 13: Total Population in Custody*



* Populations reflected are a snapshot of the last day of the month.

Chart 14: Population by Program Type*



* Populations reflected are a snapshot of the last day of the month.

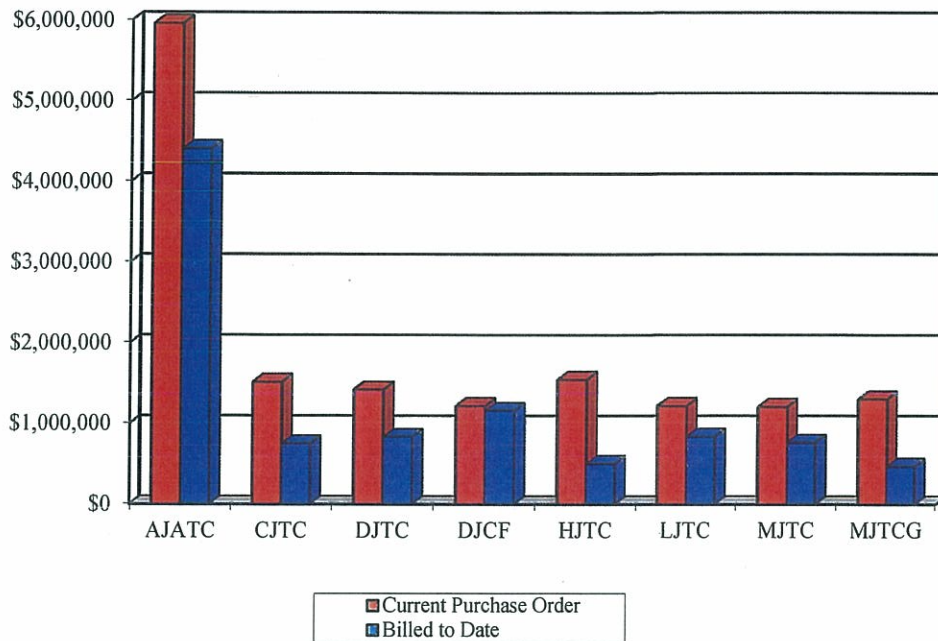
▪ Juvenile Correction Facility includes both the Arkansas Juvenile Treatment & Assessment Center and the Dermott Juvenile Correctional Facility (18-21).

▪ Juvenile Treatment Center includes the facilities at Colt, Harrisburg, Dermott (17 & Under), Lewisville, and Mansfield.

Financial

October – December, 2013

Chart 15: DYS Facility Billed to Date

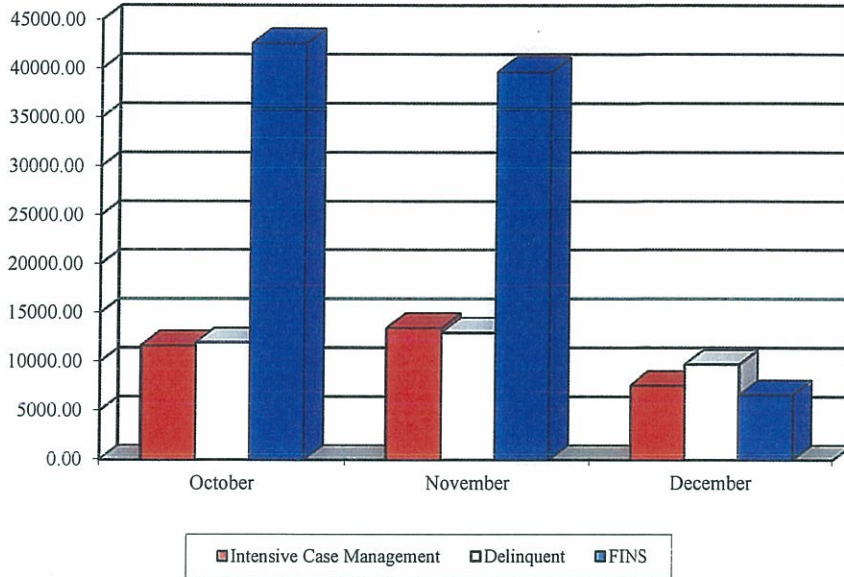


| DYS CODE | Facility Name |
|-----------|---|
| AJATC | AR Juvenile Assessment & Treatment Center |
| CJTC | Colt Juvenile Treatment Center |
| HJTC | Harrisburg Juvenile Treatment Center |
| DJCF18-21 | Dermott Juvenile Correction Facility |
| DJTC | Dermott Juvenile Treatment Center |
| LJTC | Lewisville Juvenile Treatment Center |
| MJTC | Mansfield Juvenile Treatment Center |
| MJTCG | Mansfield Juvenile Treatment Center Girls |

Financial

October – December 2013

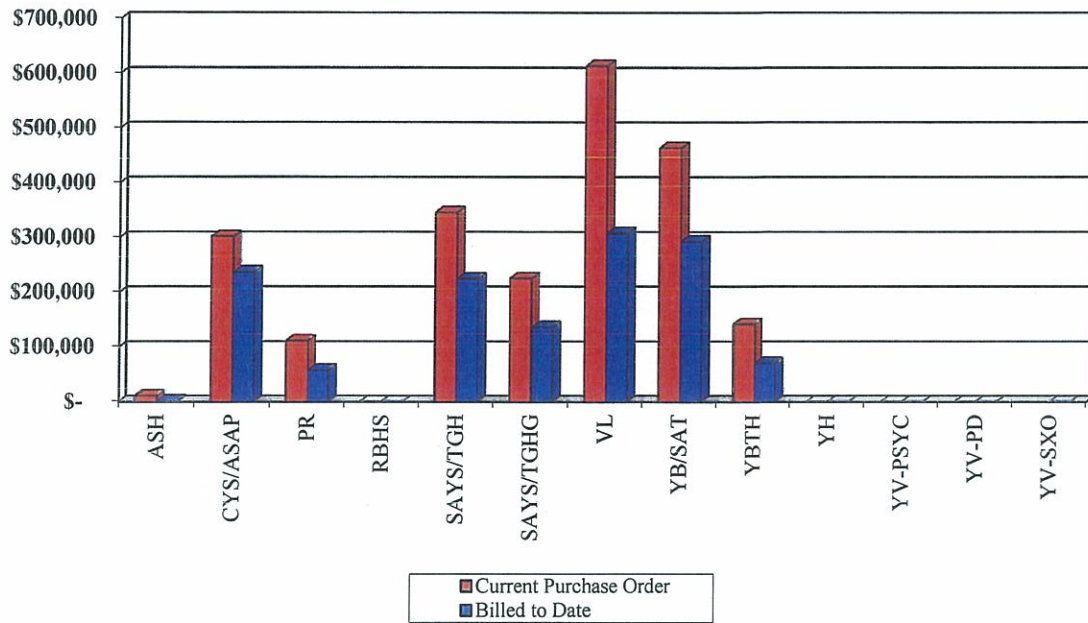
Chart 16: Community Based Services Units by Program Designation



Financial

October – December 2013

Chart 17: Specialty Services Billed to Date



| DYS CODE | Facility Name |
|-----------|---|
| ASH | Arkansas State Hospital |
| CYS/ASAP | Consolidated Youth Services Adolescent Sexual Adjustment Program |
| PR | Piney Ridge |
| RBHS | Rivendell Behavior Health Services |
| SAYS/TGH | South AR Youth Services Therapeutic Group Home (Boys) |
| SAYS/TGHG | South AR Youth Services Therapeutic Group Home for Girls |
| VL | Vera Lloyd Presbyterian Home |
| YB/SAT | Youth Bridge Substance Abuse Treatment |
| YBTH | Youth Bridge Therapeutic Group Home |
| YH | Youth Home, Inc. |
| YV-PSYCH | Youth Villages – Psychiatric Treatment |
| YV-PD | Youth Villages – Psychiatric Treatment for the Developmentally Disabled |
| YV-SXO | Youth Villages – Sex Offender Treatment |

Performance Measures

October – December 2013

Incidents

Chart 18: Incidents Accepted by the Child Abuse Hotline

| REFERRED TO HOTLINE | | INCIDENTS ACCEPTED BY HOTLINE | | | |
|---------------------|-----------------------|-------------------------------|---------------|-----------------|---------------------|
| 15 | | 6 | | | |
| Incident Type | Cases Accepted by ASP | Cases Pending | Cases Founded | Cases Unfounded | Case Status Unknown |
| ASSAULT | 0 | 0 | 0 | 0 | 0 |
| DEATH | 0 | 0 | 0 | 0 | 0 |
| DISORDERLY CONDUCT | 0 | 0 | 0 | 0 | 0 |
| FIGHT | 1 | 1 | 0 | 0 | 0 |
| OTHER | 0 | 0 | 0 | 0 | 0 |
| PHYSICAL ABUSE | 5 | 1 | 0 | 4 | 0 |
| SEXUAL ABUSE/RAPE | 0 | 0 | 0 | 0 | 0 |
| SEXUAL MISCONDUCT | 0 | 0 | 0 | 0 | 0 |
| TOTAL | 6 | 2 | 0 | 4 | 0 |

DYS IAU ensures that all appropriate incidents have been reported to the Child Abuse Hotline Unit of the Arkansas State Police (ASP). Upon reporting, the Hotline Unit determines whether the incident will be accepted for investigation. If accepted, the incident is then referred to the Investigation Unit of the ASP. The Investigation Unit of the (ASP) will then review the report and make a determination as to whether or not the information provided warrants a full investigation. If accepted for investigation by the Investigation Unit of the ASP, DYS IAU will be able to access the results of the investigation. If the incidents are not accepted for investigation by the Investigation Unit of the ASP, then DYS IAU still completes an internal investigation.

Additionally, delays in the receipt of information and lack of access to such information by the DYS IAU unit often occur. For instance, since DYS and its contractors are mandatory reporters, some of the incidents referred to the hotline may have occurred prior to DYS involvement in the youth's life. If so, given the confidentiality restrictions, DYS is not entitled to the final results of the investigation as they were not a party to the incident. Further, due to the length of the investigation period, it is likely that incidents reported by DYS and accepted by the Investigation Unit of ASP will not be finalized nor their results shared during the current quarter.

Chart 19:

Category of Incidents Accepted by Child Abuse Hotline

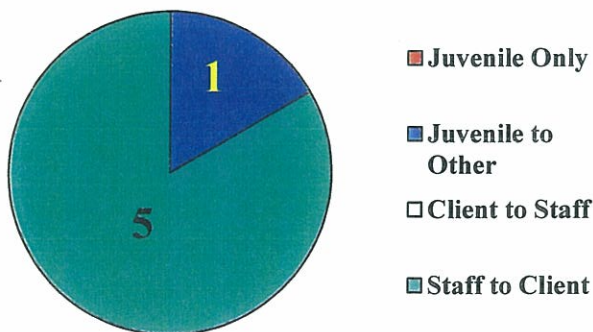
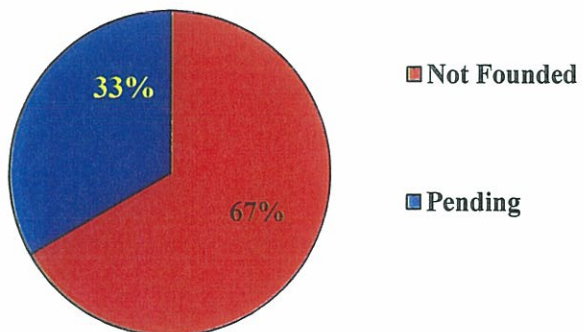


Chart 20:

Status of Cases Accepted by Child Abuse Hotline



Performance Measures October – December 2013

Chart 21: Commitments by District

| Judicial District | Number of Commitments | | | Judicial District | Number of Commitments | | |
|--------------------|-----------------------|---------|---------|-------------------|-----------------------|------------|------------|
| | FY 2012 | FY 2013 | FY 2014 | | FY 2012 | FY 2013 | FY 2014 |
| 1st | 3 | 3 | 5 | 12th | 6 | 7 | 3 |
| 2nd | 20 | 13 | 4 | 13th | 11 | 12 | 8 |
| 3rd | 3 | 3 | 3 | 14th | 0 | 0 | 0 |
| 4th | 3 | 2 | 1 | 15th | 1 | 1 | 0 |
| 5th | 7 | 0 | 6 | 16th | 1 | 2 | 4 |
| 6th | 11 | 9 | 15 | 17th | 3 | 5 | 3 |
| 7th | 7 | 2 | 4 | 18th East | 7 | 11 | 8 |
| 8th North | 3 | 2 | 6 | 18th West | 0 | 1 | 0 |
| 8th South | 0 | 1 | 3 | 19th East | 0 | 0 | 0 |
| 9th East | 2 | 0 | 1 | 19th West | 2 | 0 | 3 |
| 9th West | 2 | 1 | 0 | 20th | 8 | 6 | 4 |
| 10th | 13 | 10 | 7 | 21st | 1 | 0 | 0 |
| 11th East | 4 | 1 | 0 | 22nd | 3 | 5 | 7 |
| 11th West | 19 | 14 | 16 | 23rd | 0 | 1 | 1 |
| State Total | | | | | 140 | 112 | 112 |

Commitments encompass all juveniles who were committed to DYS including juveniles currently in custody who have received another order of commitment during the quarter.

Commitments by Charge

| COMMENTS | CHARGE DESCRIPTION | | |
|-------------------------------------|---|---|---|
| DRUG | POSSESSION CONTROLLED SUBSTANCE SCHEDULE III | 1 | |
| | POSSESSION CONTROLLED SUBSTANCE SCHEDULE IV/V | 1 | |
| | POSSESSION CONTROLLED SUBSTANCE SCHEDULE VI | 1 | |
| | POSS-USE OF DRUG PARAPHERNALIA TO MAF METH | 1 | |
| OTHER | AFTERCARE VIOLATION | 2 | |
| | FALSELY REPORTING A TERRORIST THREAT | 1 | |
| | REVOCAION OF PROBATION | 29 | |
| PERSON | VIOLATION OF PROBATION | 3 | |
| | AGGRAVATED ASSAULT | 2 | |
| PERSON | AGGRAVATED ASSAULT ON FAMILY OR HOUSEHOLD MEMBER (ARREST DATE AFTER 7-28-95) | 1 | |
| | AGGRAVATED ROBBERY | 4 | |
| | ASSAULT - 1ST DEGREE | 1 | |
| | BATTERING, DOMESTIC - 3RD DEGREE (ARREST DATE AFTER 7-28-95) | 1 | |
| | BATTERY - 2ND DEGREE | 2 | |
| | BATTERY - 3RD DEGREE | 1 | |
| | BODY PIERCING-BRANDING-TATTOOING A MINOR FALSE CLAIME OF PARENTHOOD | 1 | |
| | ENDANGERING WELFARE OF MINOR - 2ND DEGREE | 1 | |
| | MURDER - 2ND DEGREE | 1 | |
| | RAPE | 3 | |
| | ROBBERY | 2 | |
| | SEXUAL ASSAULT, 2ND DEGREE | 1 | |
| | STALKING THIRD DEGREE | 1 | |
| | TERRORISTIC THREATENING - 1ST DEGREE | 3 | |
| | TERRORISTIC THREATENING - 2ND DEGREE (ARREST DATE AFTER 8-13-93) | 2 | |
| | PROPERTY | BREAKING OR ENTERING | 6 |
| | | BURGLARY, COMMERCIAL (ARREST DATE AFTER 8-13-93) | 1 |
| | | BURGLARY, RESIDENTIAL (ARREST DATE AFTER 8-13-93) | 7 |
| | | CRIMINAL MISCHIEF - 1ST DEGREE | 2 |
| | | SHOPLIFTING | 1 |
| THEFT BY RECEIVING | | 3 | |
| PUBLIC ORD | THEFT OF PROPERTY | 9 | |
| | DISORDERLY CONDUCT | 7 | |
| | ESCAPE - 1ST DEGREE | 1 | |
| | FLEEING | 3 | |
| | HANDGUN MINOR IN POSSESSION 1ST OFFENSE | 3 | |
| | HANDGUN MINOR IN POSSESSION 2ND OFFENSE | 1 | |
| | HANDGUN POSS PUB SCHOOL PROPERTY-BUS | 1 | |
| OBSTRUCTING GOVERNMENTAL OPERATIONS | 1 | | |
| Grand Total | | 112 | |