



Division of Children and Family Services

Cecile Blucker, Director
P.O. Box 1437, Slot S560 · Little Rock, AR 72203-1437
501-682-8772 · Fax: 501-682-6968 · TDD: 501-682-1442



EXHIBIT G

April 16, 2014

The Honorable David Meeks, Chair
House Committee on Aging, Children,
and Youth, Legislative and Military Affairs
Arkansas Legislative Council
315 State Capitol Building
Little Rock, Arkansas 72201

The Honorable Stephanie Flowers, Chair
Senate Committee on Children
and Youth
Arkansas Legislative Council
315 State Capitol Building
Little Rock, Arkansas 72201

Dear Representative Meeks and Senator Flowers:

Act 1222 of 1995 mandates a quarterly evaluation of the performance of the Division of Children and Family Services. Attached is the Quarterly Performance Report (QPR) produced in compliance with that mandate. The report covers the 2nd quarter of SFY 2014 (October 2013 to December 2013).

Forty copies of the report along with an electronic version are attached for your convenience.

Should you have questions regarding the enclosed materials, please feel free to contact me.

Sincerely,

A handwritten signature in cursive script that reads "Cecile Blucker".

Cecile Blucker
Director

CB: fs

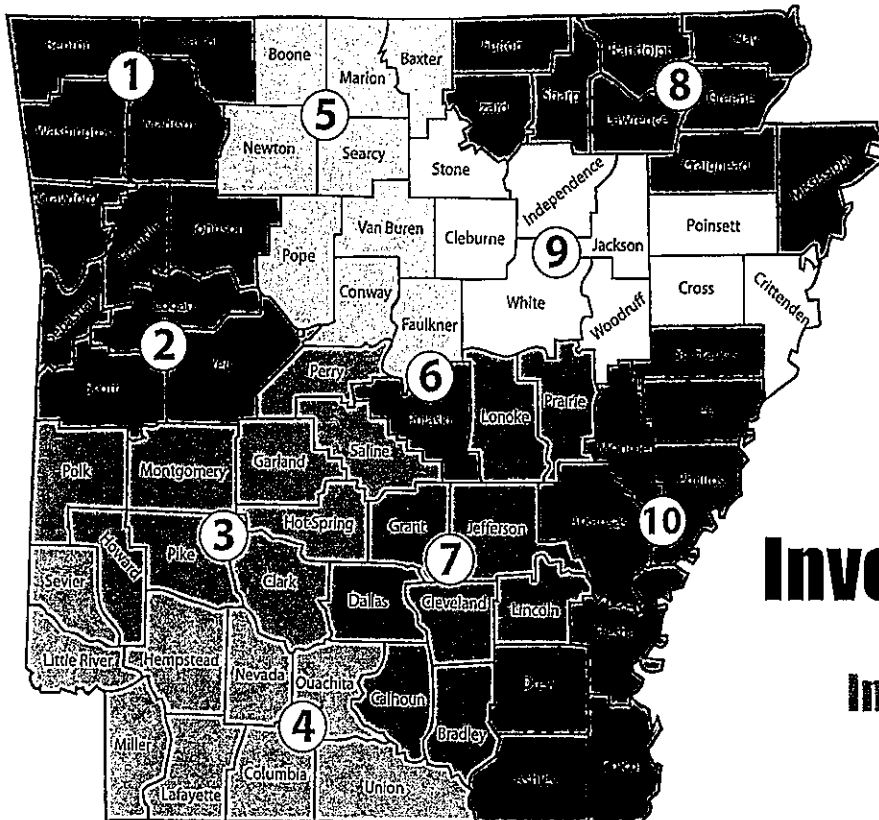
cc: John Selig, Director, Department and Human Services

Attachments (40)

QUARTERLY PERFORMANCE REPORT

2ND QUARTER

SFY 2014



Investigations

SUPPORTIVE SERVICES

In-home Protective Services

ADOPTIONS

Differential Response
Foster Care

Produced for
Arkansas Department of Human Services
Division of Children and Family Services
by
Hornby Zeller Associates, Inc.

Table of Contents

Reports of Child Maltreatment.....	1
Volume and Description of Child Maltreatment Reports	1
Meeting Agency Policies	4
Benefits to Children and Families	6
In-Home Services.....	7
Volume and Description of Cases.....	7
Meeting Agency Policies.....	8
Benefits to Children and Families	9
Foster Care.....	10
Volume and Description of Cases.....	10
Meeting Agency Policies.....	13
Benefits to Children and Families	15
Adoption	16
Volume and Description of Cases.....	16
Meeting Agency Policies.....	17
Benefits to Children and Families	18
Resources.....	19
Caseworkers and Caseloads	19
Foster Homes	20
Appendices.....	23
<i>Appendix A: Breakdown of Child Maltreatment Reports</i> Received During the Quarter and Substantiation Rates of Maltreatment Investigations	23
<i>Appendix B: Summary of Reports Involving Child Fatality.....</i>	24
<i>Appendix C: Summary of Reports Involving Near Child Fatality.....</i>	26
<i>Appendix D: Summary of Reports Involving Fatalities of</i> Children In Foster Care Who Did Not Receive A Maltreatment Investigation.....	27
<i>Appendix E: Average Caseload by County.....</i>	28
<i>Appendix F: Foster Home Closure Reasons</i>	29
<i>Appendix G: Summary of Foster Care Maltreatment Reports</i>	31

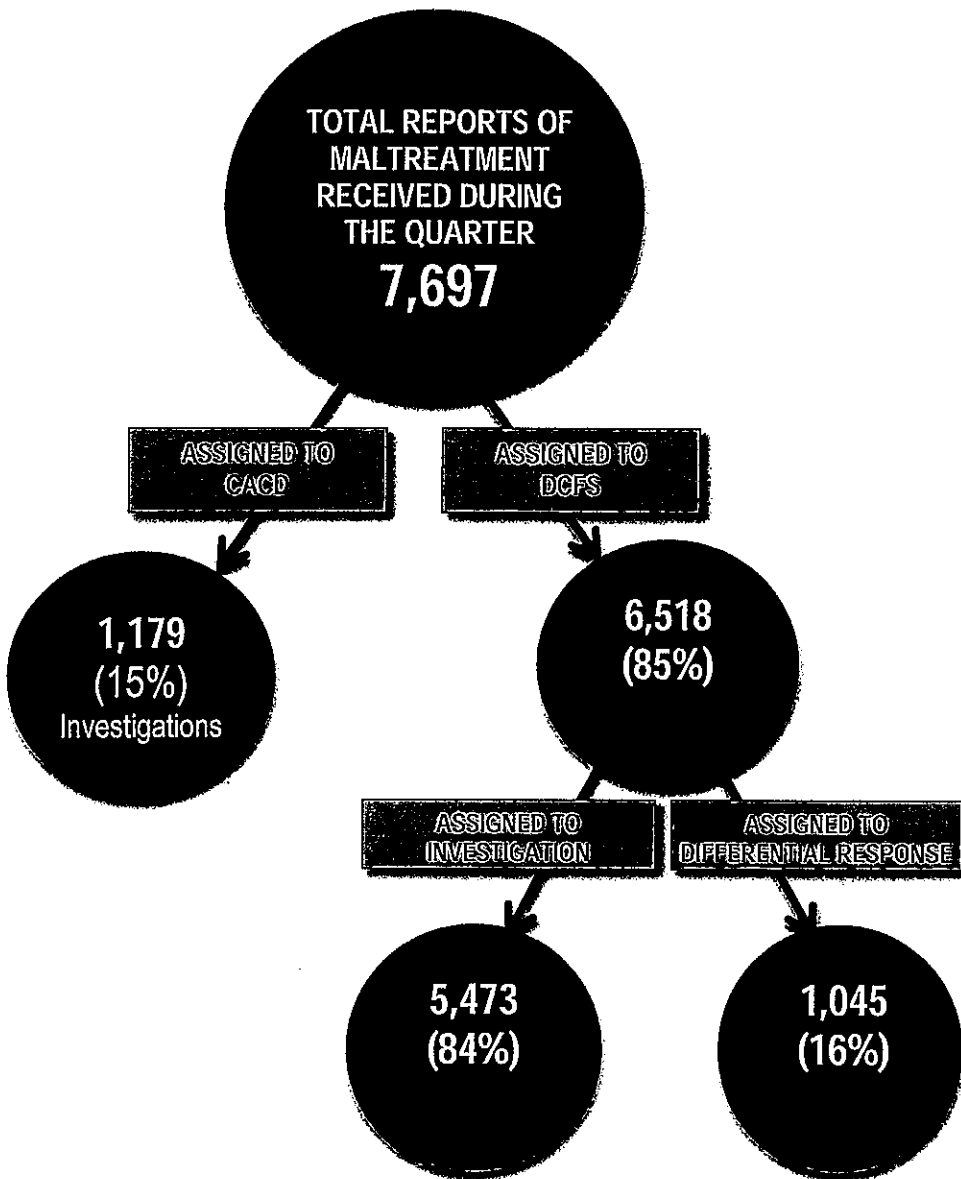
Reports of Child Maltreatment

Quick Facts

Volume and Description of Child Maltreatment Reports

VOLUME OF INCOMING REPORTS

Maltreatment Reports Received During
2nd Quarter SFY 2014



Of the 7,697 reports of child maltreatment accepted by the Arkansas Child Abuse Hotline during the quarter, 85 percent were assigned to DCFS and 15 percent were assigned to the Crimes Against Children Division (CACD) of the Arkansas State Police, which is responsible for investigating the most serious allegations of maltreatment.

Of the reports assigned to DCFS, 84 percent were assigned for an investigation and 16 percent were handled through Differential Response (DR).

DCFS initially piloted the DR program in several counties in October 2012, and by August 2013 the agency had implemented the program statewide.

DR allows the Division to respond to specific, low-risk maltreatment reports through a family assessment and provision of services rather than a traditional investigation.

The following types of allegations can qualify for DR:

- Inadequate Supervision if children are at least five
- Environmental Neglect if children are at least three
- Medical Neglect if children are at least thirteen
- Lock Out if children are at least ten
- Inadequate Food, Inadequate Shelter, Inadequate Clothing, and Educational Neglect with no age Restrictions.

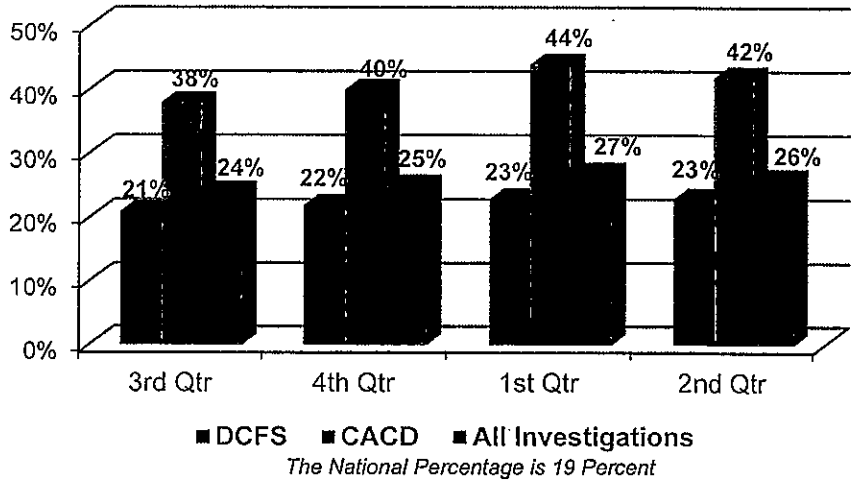
Quick Facts

FINDINGS OF CHILD MALTREATMENT INVESTIGATIONS

Twenty-three percent of the investigations assigned to DCFS during the quarter were found true, compared to 42 percent for CACD. The overall substantiation rate stood at 26 percent.

Appendix A provides further detail on the number of referrals accepted for investigation and those found true for the past four quarters.

Percentage Of Investigations Found True



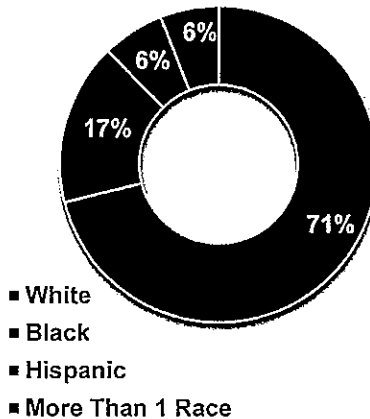
CHARACTERISTICS OF CHILDREN INVOLVED IN TRUE INVESTIGATIONS

There were 2,448 victim children involved in the maltreatment investigations that were found true.

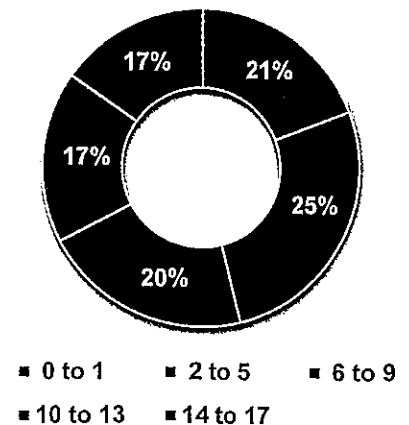
Of those children, 71 percent were white and 17 percent were black. Children ages two to five represented the largest group involved in true maltreatment investigations.

A slight majority of the victim children during the quarter (54 percent) were female.

Race/Ethnicity of Children in True Reports



Ages of Children in True Reports



TYPES OF ALLEGATIONS IN TRUE INVESTIGATIONS

The majority of the 2,448 victim children in true investigations were involved in allegations of neglect, followed by allegations of sexual abuse and then physical abuse.

Percentage of Children in True Allegations of Maltreatment

	Number of Children Cited in True Allegation	Percentage of Children Cited in True Allegation
Neglect	1,533	63%
Sexual Abuse	546	22%
Physical Abuse	539	22%

A child may have more than one allegation.

Quick Facts

REPORTS INVOLVING FATALITIES OR NEAR FATALITIES

Findings of Maltreatment Reports Involving Fatalities or Near Fatalities

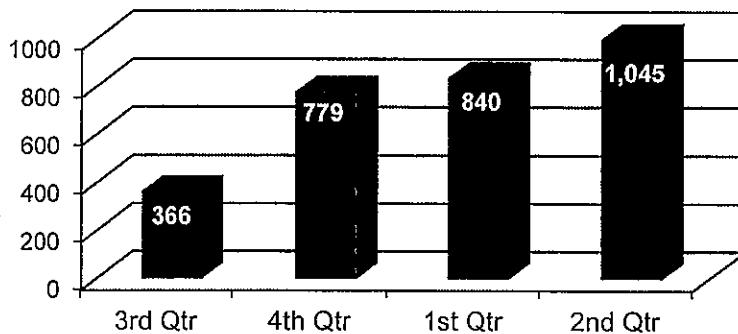
Finding	Child Fatality	Near Child Fatality
True	7	2
Unsubstantiated	0	0
Pending	1	0

During the quarter, there were eight maltreatment investigations of a child fatality and two maltreatment investigations of a near child fatality. Of these ten investigations, nine were found true and one is still pending.

Appendices B and C include more details regarding these fatalities and near fatalities. Appendix D provides information on children who died in foster care during the quarter for reasons other than maltreatment.

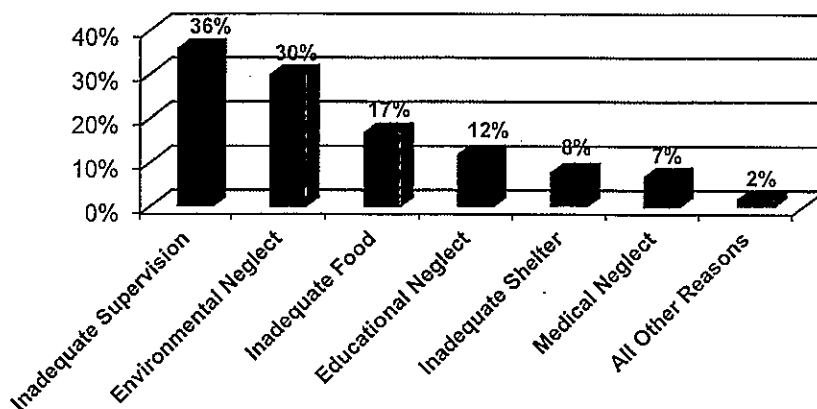
REPORTS ASSIGNED FOR DIFFERENTIAL RESPONSE (DR)

Number of Reports Assigned to Differential Response



The number of reports assigned for DR has steadily increased during the past four quarters, reflective of the spread of the program statewide.

Types of Allegations Cited in Reports Assigned for DR



ALLEGATIONS CITED IN DR REPORTS

Over a third of the reports assigned to DR cited allegations of Inadequate Supervision. Environmental Neglect was the second leading allegation in these reports.

Quick Facts

Meeting Agency Policies

TIMELINESS OF INITIATING INVESTIGATIONS

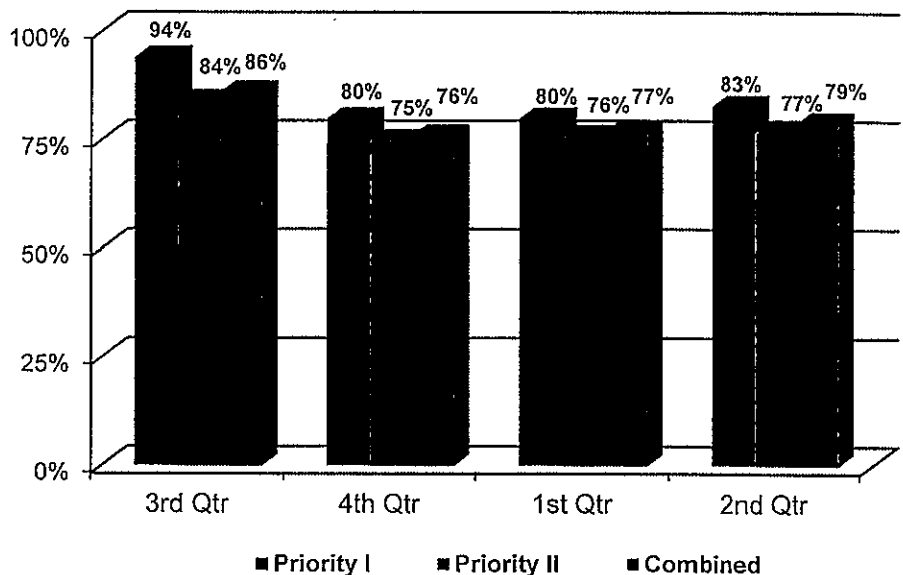
The law requires reports of maltreatment to be initiated within 24 hours of a Priority I report or within 72 hours of a Priority II report.

Priority I reports cite more severe allegations while Priority II reports cite comparatively less serious allegations.

Initiation occurs when all victim children are interviewed or observed (if too young for an interview) within the designated timeframes.

DCFS initiated 79 percent of its investigations on time during the second quarter. The Division's performance was slightly higher at initiating Priority I reports.

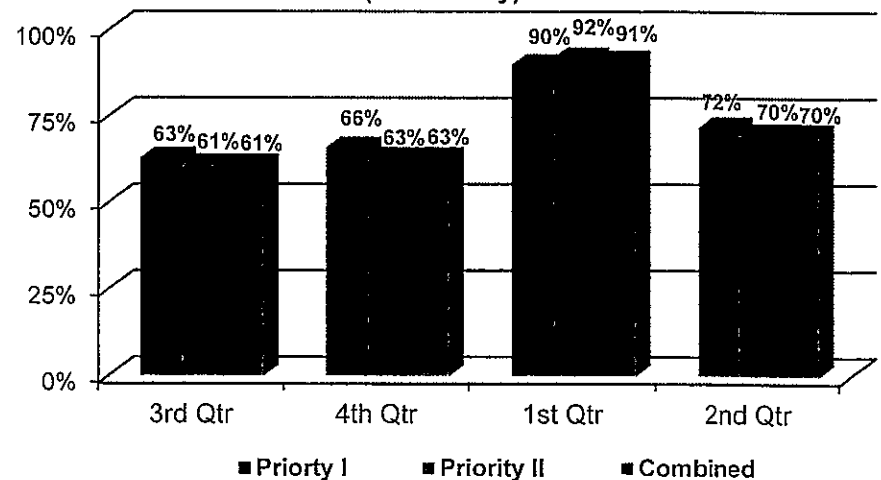
Timely Initiations of Child Maltreatment Assessments (DCFS Only)



TIMELINESS OF COMPLETING INVESTIGATIONS

DCFS completed 70 percent of its investigations on time (within 45 days of receipt of the report) during the quarter, a decrease from the previous quarter.

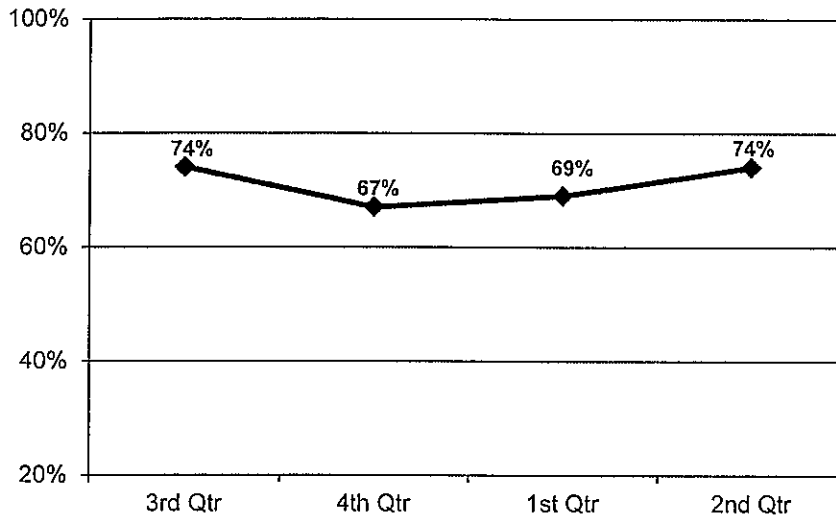
Timely Completion of DCFS Assessments (DCFS Only)



Quick Facts

TIMELINESS OF INITIATING REPORTS ASSIGNED TO DR

Timeliness of DR Initiations

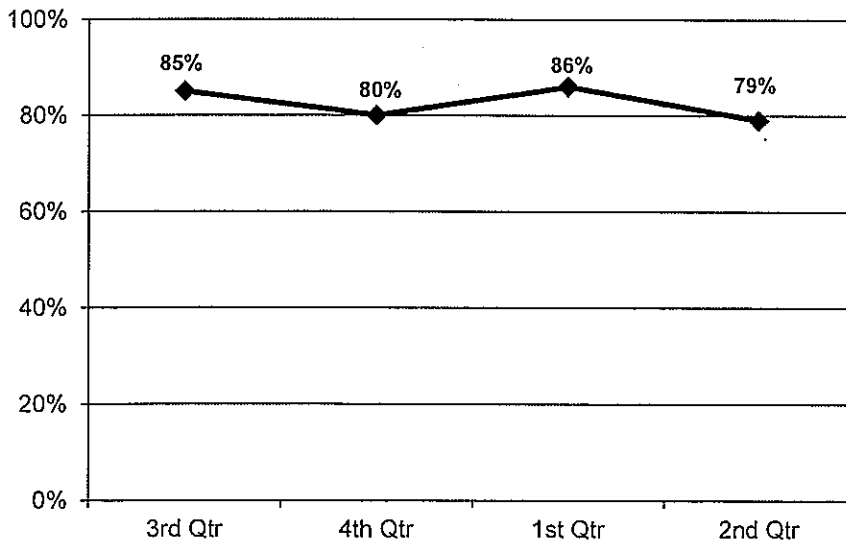


DR referrals must be initiated within 72 hours of receipt of the report.

DCFS initiated 74 percent of its DR reports on time during the quarter.

TIMELINESS OF COMPLETING REPORTS ASSIGNED TO DR

Timeliness of DR Closures (Within 30 Days)



Reports assigned to DR must be closed within 30 days of receipt of the report.

The Agency closed 79 percent of its DR reports within 30 days.

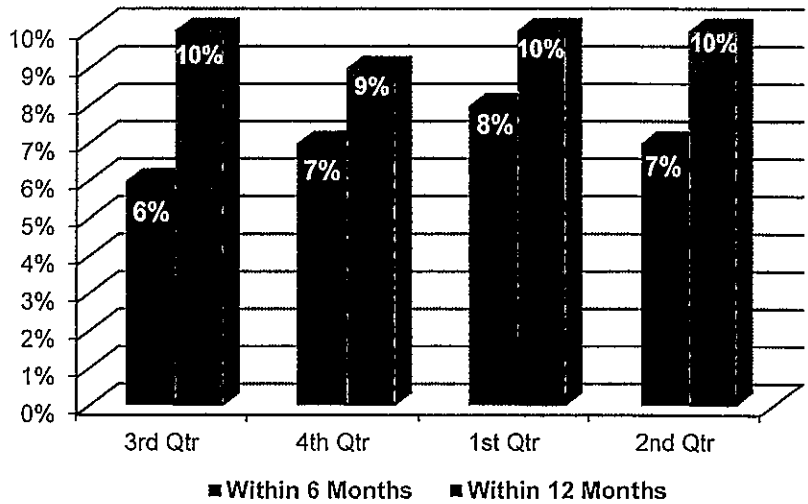
Quick Facts

Benefits to Children and Families

PREVENTING THE RECURRENCE OF MALTREATMENT

Ten percent of the victim children involved in true investigations experienced a recurrence of maltreatment within 12 months. Seven percent had another true report within six months, which does not meet the national standard.

Recurrence of Maltreatment within 6 and 12 Months

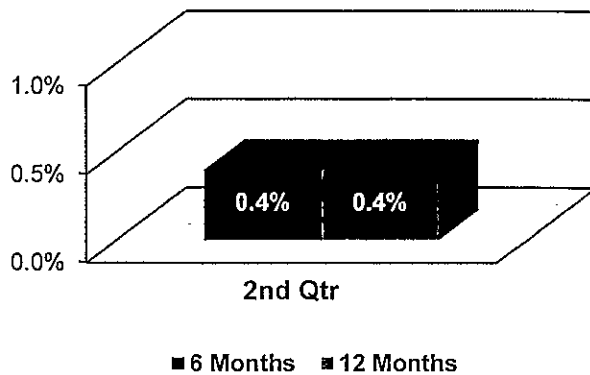


The National Standard for absence of recurrence within six months is 5.4 percent or less

ABSENCE OF RECURRENCE AMONG FAMILIES WHO RECEIVED DR

Only 0.4 percent of the children who began receiving DR services were involved in a true investigation of child maltreatment within six and 12 months. This is a better result than the children who received traditional investigations.

Percentage of Children Involved in True Maltreatment Reports Within 6 and 12 Months of Receiving DR

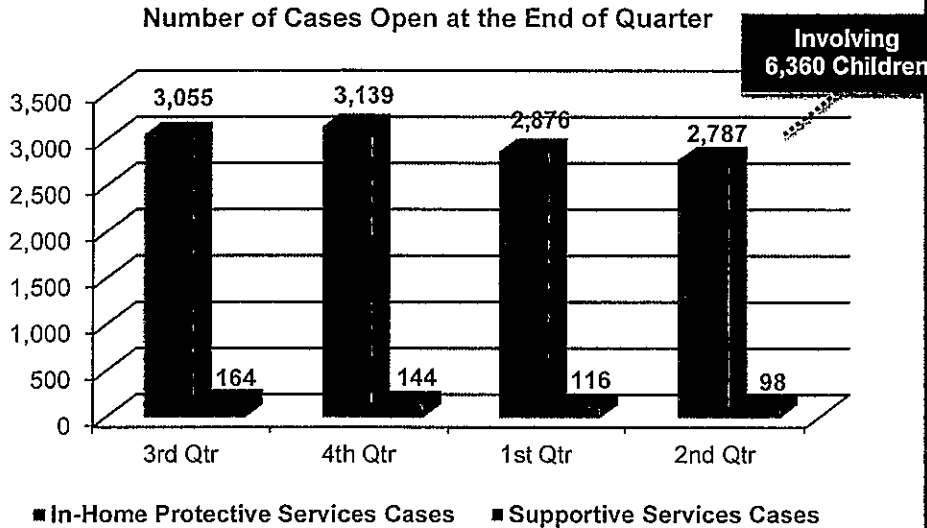


In-Home Services

Quick Facts

Volume and Description of Cases

VOLUME OF CASES

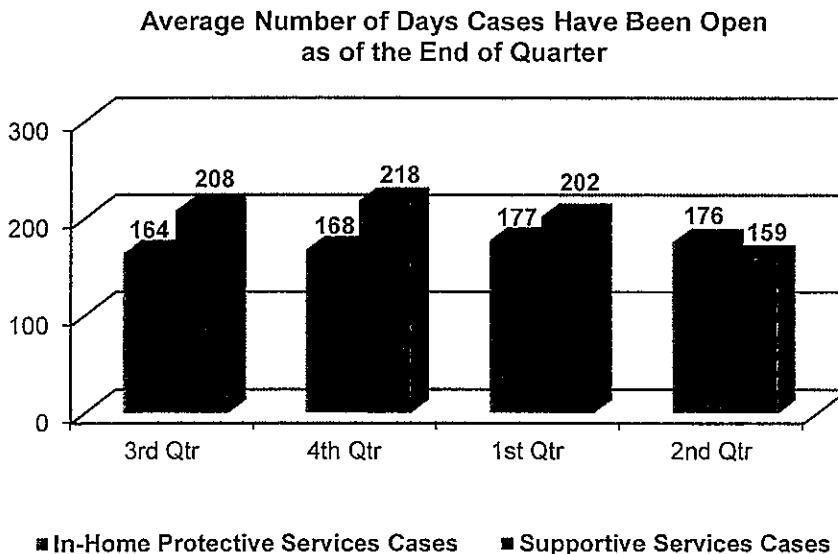


In most instances DCFS offers in-home services through a protective services case, which are opened when a true maltreatment report or court order necessitates DCFS' involvement with a family but there is not an immediate threat to any child's safety in the home.

The number of in-home protective services cases decreased by three percent during the quarter. At the end of the quarter, there were 2,787 in-home cases open across the state, involving 6,360 children.

The Division also offers some in-home supportive services to families on a voluntary basis. DCFS was responsible for 98 supportive services cases at the end of the quarter.

LENGTH OF TIME CASES HAVE BEEN OPEN



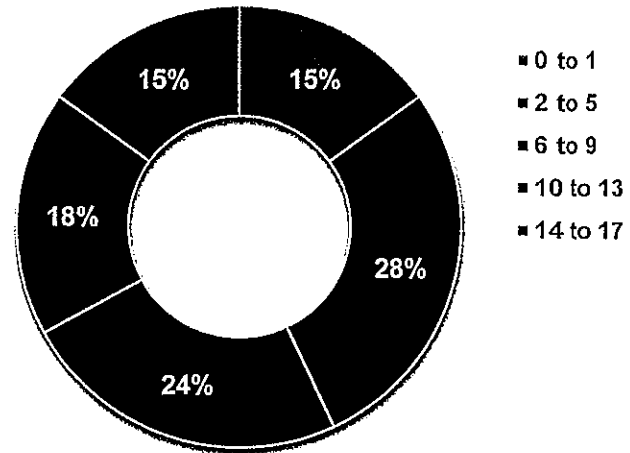
The average length of time in-home cases were open at the end of the quarter was nearly six months (176 days). Supportive services cases were open slightly shorter.

Quick Facts

AGES OF CHILDREN IN IN-HOME CASES

Children ages two to five make up the largest group of children involved in in-home cases at the end of the quarter.

Ages of Children in In-Home Cases

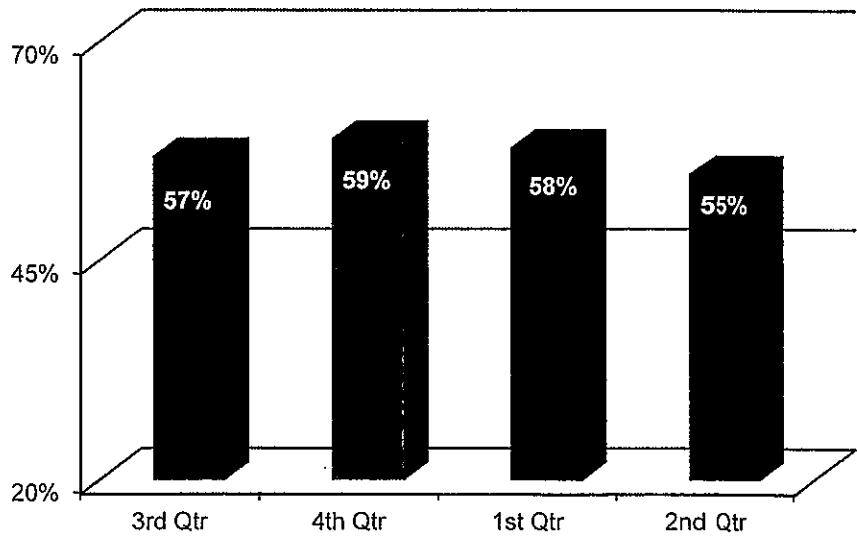


Meeting Agency Policies

MONTHLY VISITS TO IN-HOME CASES

On average, 55 percent of the in-home cases received a face-to-face monthly visit from a caseworker during the quarter.

Required Monthly Visits to In-Home Cases

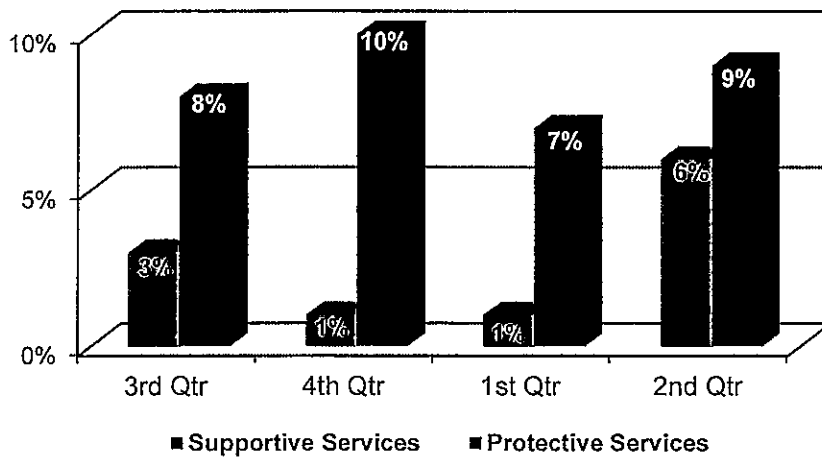


Quick Facts

Benefits to Children and Families

VICTIMIZATION RATE AMONG CHILDREN WHO RECEIVED PROTECTIVE AND SUPPORTIVE SERVICES

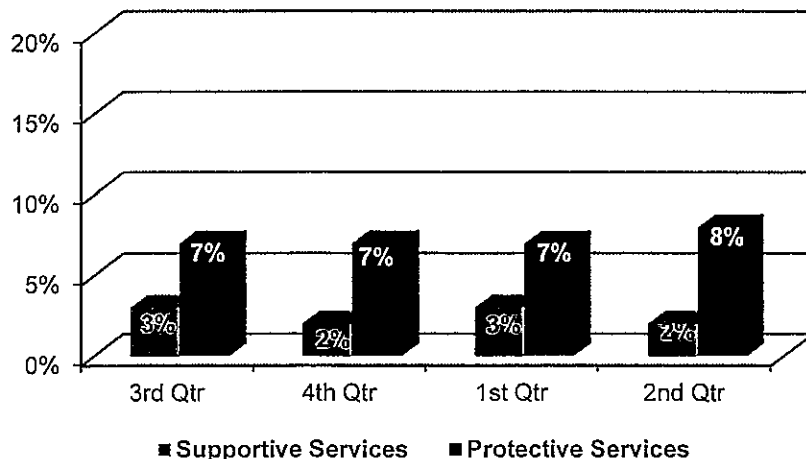
Percentage of Children Receiving Supportive and Protective Services who were Abused or Neglected within One Year of the Initiation of Service



Of the children who began receiving supportive services during the second quarter one year ago, only six percent experienced a true report of maltreatment within one year. Of the children who began receiving in-home protective services during the second quarter one year ago, nine percent were involved in a true report within one year (91 percent were not).

RATE OF ENTRY INTO FOSTER CARE AMONG CHILDREN WHO RECEIVED PROTECTIVE AND SUPPORTIVE SERVICES

Percentage of Children Receiving Supportive or Protective Services who Entered Foster Care within One Year of the Initiation of Service



Of the children who began receiving supportive services during the second quarter one year ago, only two percent entered foster care within one year of the initiation of those services. Meanwhile, only eight percent of children who began receiving protective services during the same timeframe entered care within one year.

These services prevent the vast majority of the children from being re-victimized or entering foster care within one year.

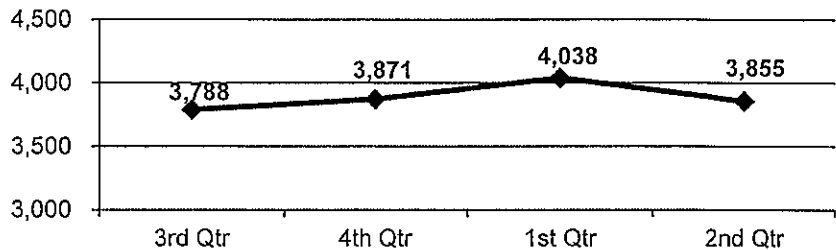
Quick Facts

Volume and Description of Cases

NUMBER OF CHILDREN IN FOSTER CARE

There were 3,855 children in foster care at the end of the second quarter of SFY 2014. This signified a five percent decrease from the previous quarter.

Number of Children in Foster Care at End of the Quarter

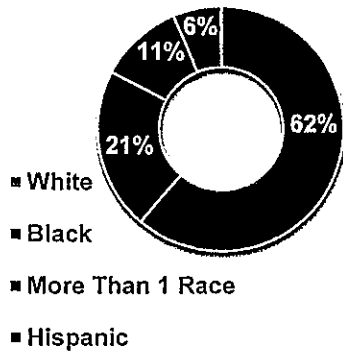


CHARACTERISTICS OF CHILDREN IN FOSTER CARE

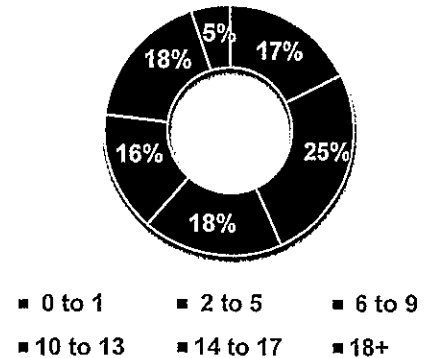
Children two to five years of age (25 percent) represent the largest group of children in care. Sixty-two percent were white and 21 percent were black.

Of the children in foster care at the end of the quarter, 54 percent were male and 46 percent were female.

Race/Ethnicity of Children in Care at the End of Quarter



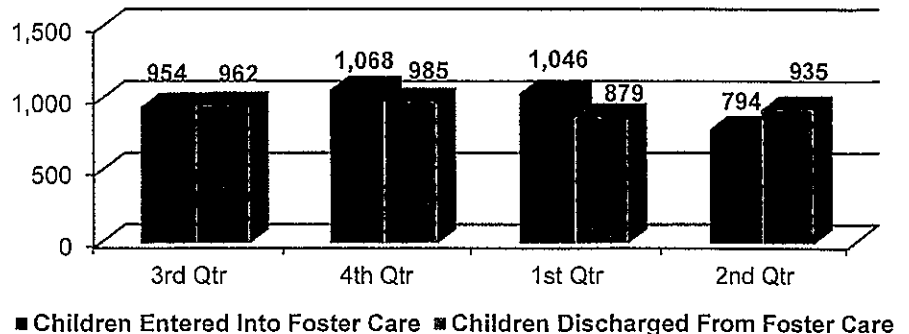
Ages of Children in Foster Care During the Quarter



ADMISSIONS INTO AND DISCHARGES FROM FOSTER CARE

During the second quarter of SFY 2014, more children discharged foster care than entered. This resulted in the net loss of 141 foster children during the quarter.

Number of Admissions Into and Discharges From Foster Care During Quarter



Quick Facts

REASONS FOR CHILDREN'S ENTRY INTO FOSTER CARE

Reasons for Children's Entry Into Foster Care
2nd Quarter SFY 2014

Placement Reason	Number of Entries	Total
Substance Abuse	402 ¹	51%
Neglect	365	46%
Parent Incarceration	179	23%
Physical Abuse	116	15%
Inadequate Housing	87	11%
Sexual Abuse	39	5%
Caretaker Illness	34	4%
Abandonment	23	3%
Child's Behavior	18	2%
Tuancy	17	2%
Death of Parents	10	1%
Sexual Offender	8	1%
Other	5	1%

A child may have more than one reason for entry.

Substance abuse followed closely by neglect were the most prevalent reasons for children entering foster care.

REASONS FOR CHILDREN'S DISCHARGE FROM FOSTER CARE

Reasons for Children's Discharge From Foster Care
2nd Quarter SFY 2014

Placement Reason	Number of Discharges	Total
Reunification	335	36%
Relative Custody	328	35%
Adoption	202	22%
Child Aged Out	43	5%
Non-Relative Custody	24	3%
Custody Transfer	1	0%
Death of Child	2	0%

National data indicate that the three most prevalent reasons children leave care are reunification (52%), adoption (20%) and relative care (8%).

Nearly three-fourths of the children who left foster care during the quarter were reunified either with their own family or that of a relative. Arkansas (93 percent) exceeds the national average of 80 percent of the children either going home, to a relative, or to an adoptive home.

¹ These 402 cases of substance abuse include 348 instances of parental substance abuse, 40 instances of parental alcohol abuse, 13 instances of substance abuse by the child, and one case of alcohol abuse by the child.

Quick Facts

LENGTH OF STAY IN FOSTER CARE

Of the children in foster care at the end of the quarter, 46 percent have been in care longer than 12 months.

Length of Stay in Foster Care for Children in Care
2nd Quarter SFY 2014

	Number	Percentage	National ²
Less than 30 days	214	6%	5%
30-90 Days	370	10%	22%
3-6 Months	589	15%	
6-12 Months	900	23%	20%
12-24 Months	863	22%	24%
24-36 Months	353	9%	11%
36+ Months	566	15%	18%
Total	3,855	100%	100%

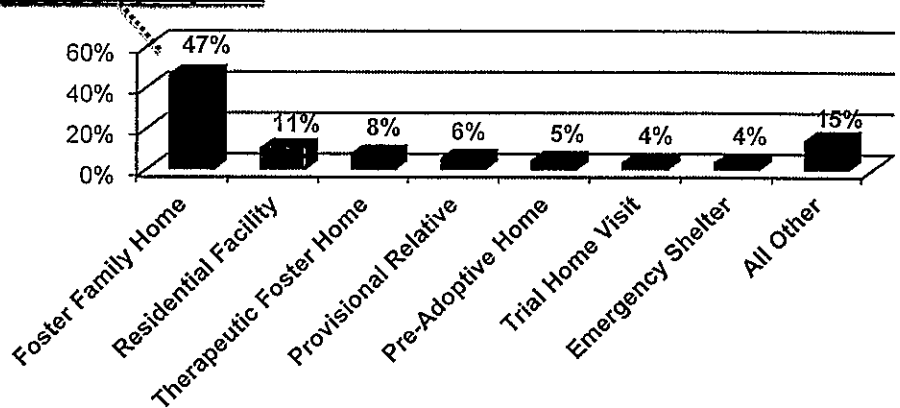
PLACEMENT OF CHILDREN IN CARE

Nearly half of the children in foster care at the end of the quarter resided in foster family homes.

Overall, 70 percent of the children resided in a family-like setting (foster family home, therapeutic foster home, relative care, pre-adoptive home, trial home visit) at the end of the quarter.

Relative: 9%
Non-Relative: 38%

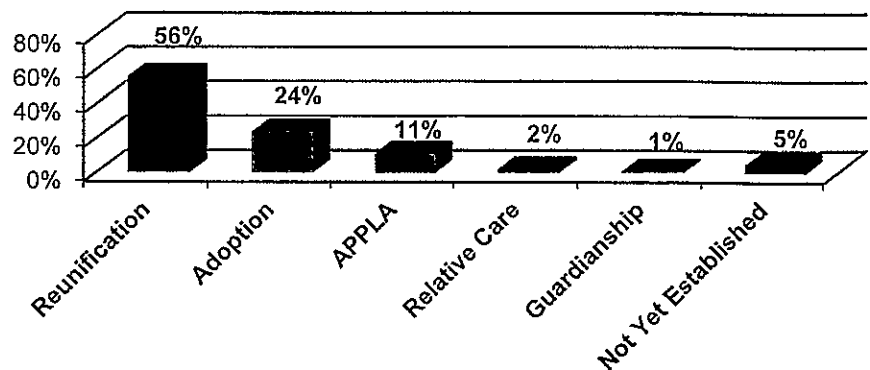
Placement of Children at the End of the Quarter



PERMANENCY GOAL OF CHILDREN IN CARE

The majority of the children in care at the end of the quarter had a permanency goal of reunification (return home) and almost a quarter had a goal of adoption.

Permanency Goals of Children at the End of the Quarter



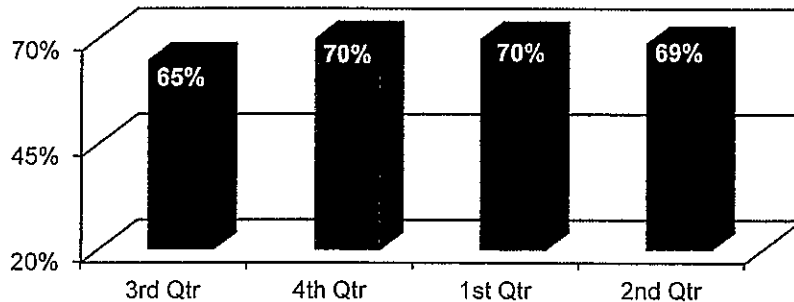
² Adoption and Foster Care Analysis and Reporting System (AFCARS) preliminary data submitted for children in foster care between 10/1/2011 and 9/30/2012 as of November 2013.

Quick Facts

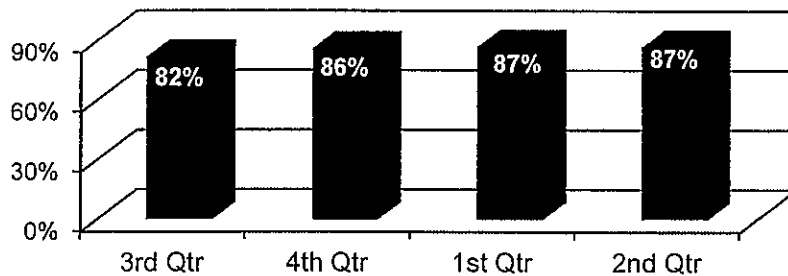
Meeting Agency Policies

MONTHLY VISITS TO FOSTER CHILDREN

Foster Children who Received Monthly Face-to-Face Visits by Caseworkers



Foster Children who Received Monthly Face-to-Face Visits by Any DCFS Staff

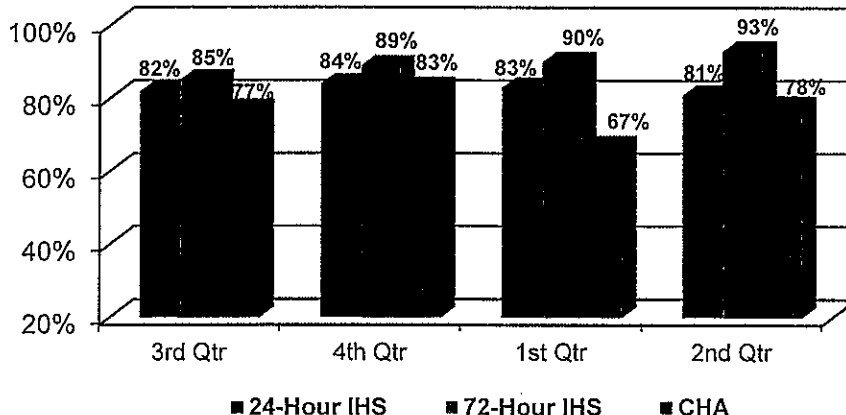


Sixty-nine percent of the foster children statewide received a face-to-face monthly visit from a DCFS caseworker, on average, during the quarter. To ensure safety and well-being, best practice requires foster children to be visited by their caseworkers monthly.

Eighty-seven percent of foster children received a face-to-face monthly visit from *any* DCFS staff member (i.e., regardless of position), on average, during the quarter.

INITIAL HEALTH SCREENINGS AND COMPREHENSIVE HEALTH ASSESSMENTS

24-hour and 72-Hour Initial Health Screening and Comprehensive Health Assessments



When a child enters foster care due to an allegation of severe maltreatment, DCFS must conduct an Initial Health Screening (IHS) within 24 hours. All other incoming foster children require health screenings within 72 hours. These children must also receive a Comprehensive Health Assessment (CHA) within 60 days of entering foster care.

DCFS completed 81 percent of its required 24-hour IHSs, 93 percent of its 72-hour IHSs, and 78 percent of its CHAs on time.

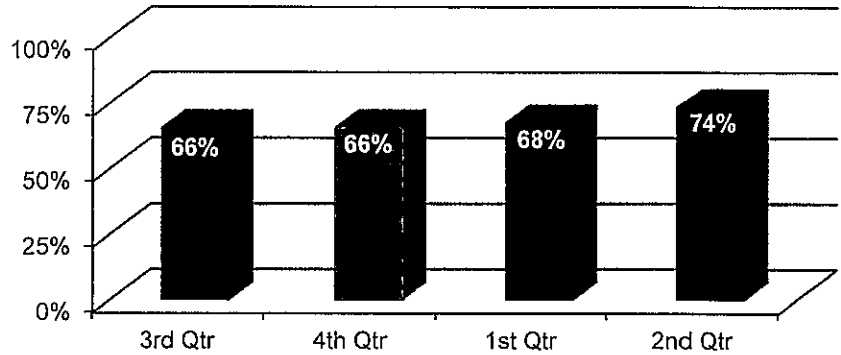
Quick Facts

PERCENTAGE OF SIBLINGS IN PLACEMENT WHO ARE PLACED TOGETHER

At the end of the quarter, 74 percent of the children with siblings in foster care were placed with at least one of their siblings. Of those, 55 percent were placed with all of their siblings.

These figures do not exclude children who were placed separately for valid reasons such as safety issues or court orders.

Siblings in Care who are placed Together

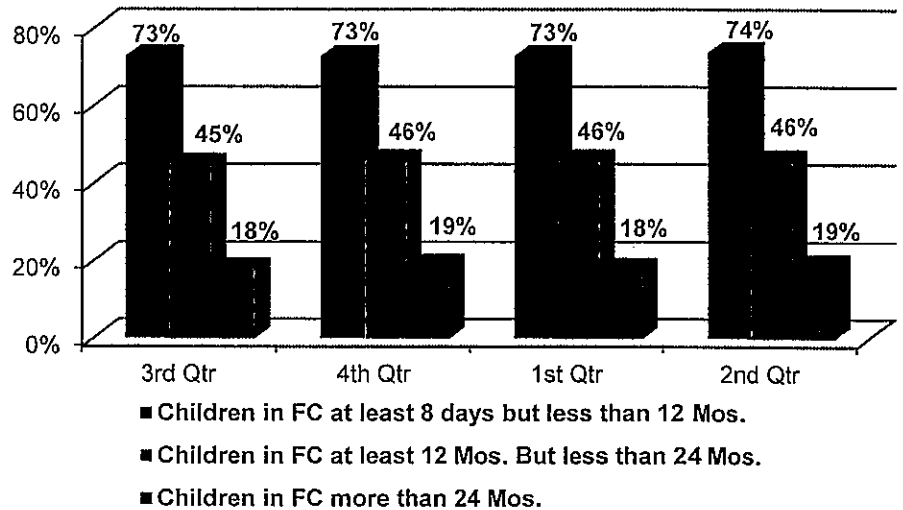


PLACEMENT STABILITY OF CHILDREN IN FOSTER CARE

Placement stability is measured by the percentage of children with two or fewer placements who are in care for varying lengths of time.

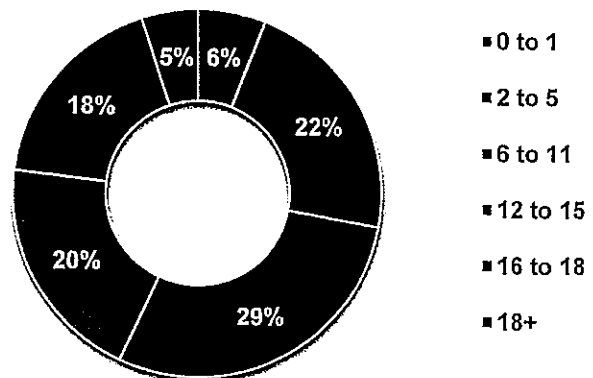
Of those in care for less than 12 months, 74 percent experienced two or fewer placements; the national standard is 86 percent. Of the children in foster care between 12 and 24 months, 46 percent had two or fewer placements; the national standard for this group is 65.4 percent. Finally, of the children in care for over two years, only 19 percent experienced two or fewer placements, with the national standard being 41.8 percent.

Children in Foster Care who have Experienced Two or Fewer Placements



Children six to 11 represent the largest group of children who experienced three or more placements during their stay in foster care.

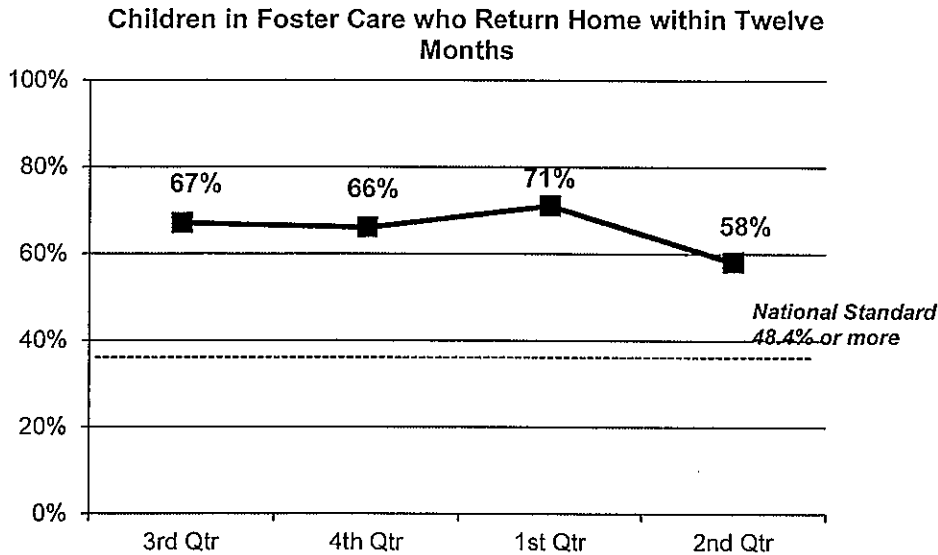
Ages of Children who Experienced Three or More Placements



Quick Facts

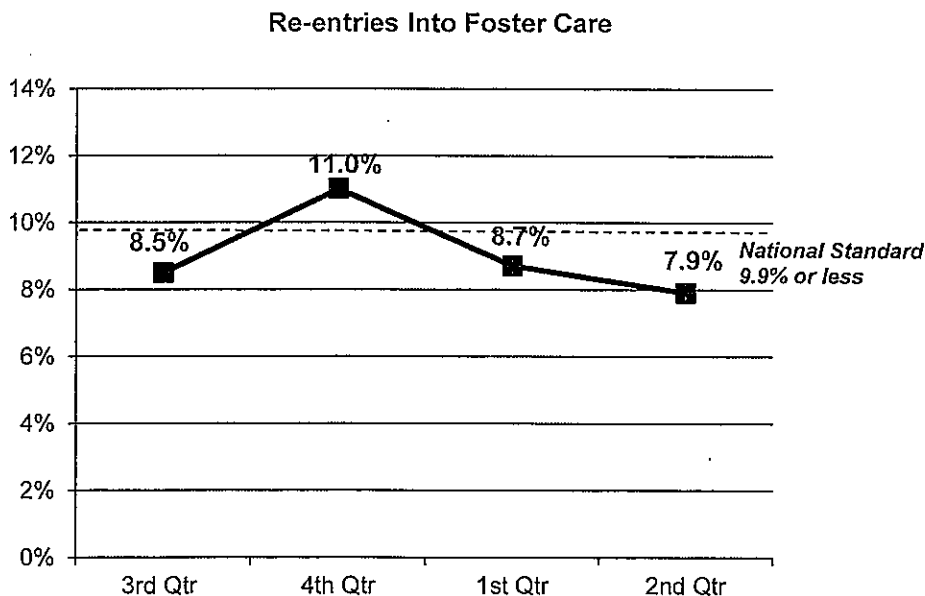
Benefits to Children and Families

CHILDREN IN FOSTER CARE WHO RETURN HOME WITHIN TWELVE MONTHS



Fifty-eight percent of the children who entered foster care during the second quarter one year ago returned to their families within 12 months, exceeding the national standard of 48.4 percent.

PREVENTING CHILDREN'S RE-ENTRY INTO FOSTER CARE



Less than eight percent of the children who were discharged to their families during the second quarter one year ago re-entered foster care within 12 months. The Division meets the national standard of 9.9 percent or less.

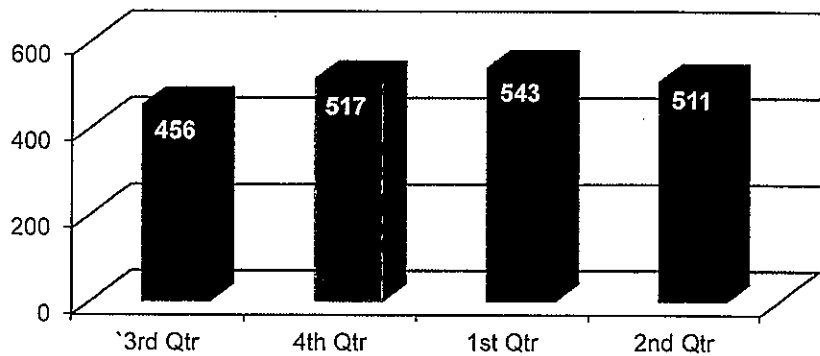
Quick Facts

Volume and Description of Cases

CHILDREN AVAILABLE FOR ADOPTION³

At the end of the quarter, 511 children were available for adoption.

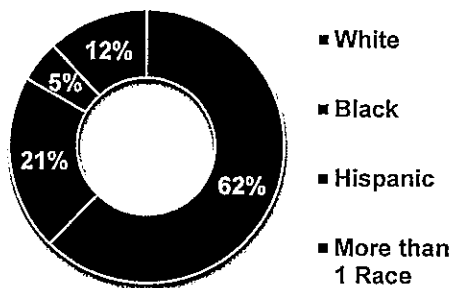
Number of Children Available for Adoption at the End of the Quarter



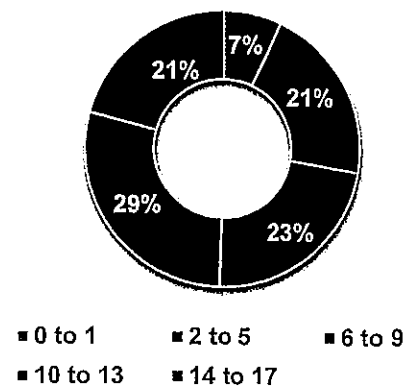
CHARACTERISTICS OF CHILDREN AVAILABLE FOR ADOPTION

Of the available children, 62 percent were white and 21 percent were black. The largest group range in age from ten to thirteen years.

Race/Ethnicity of Children Available for Adoption



Ages of Children Available for Adoption

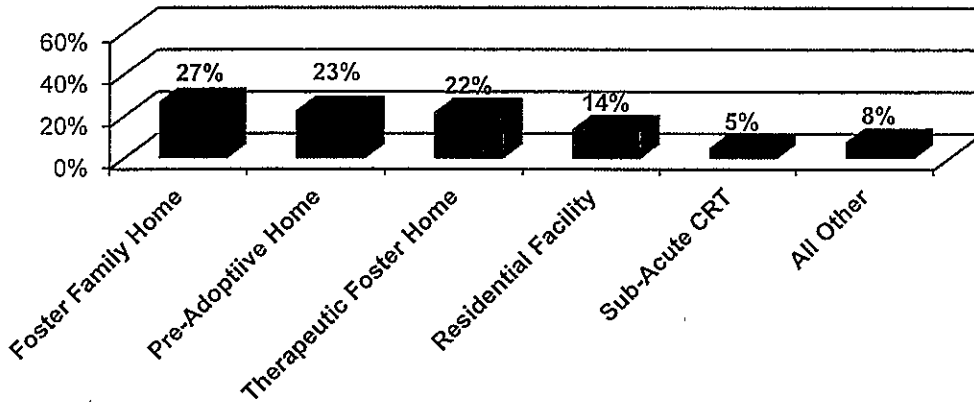


³ Children available for adoption are defined as those who have a termination of parental rights on both parents and a goal of adoption.
Arkansas Division of Children and Family Services

Quick Facts

PLACEMENT OF CHILDREN AVAILABLE FOR ADOPTION

Placement of Children Available for Adoption at the End of the Quarter

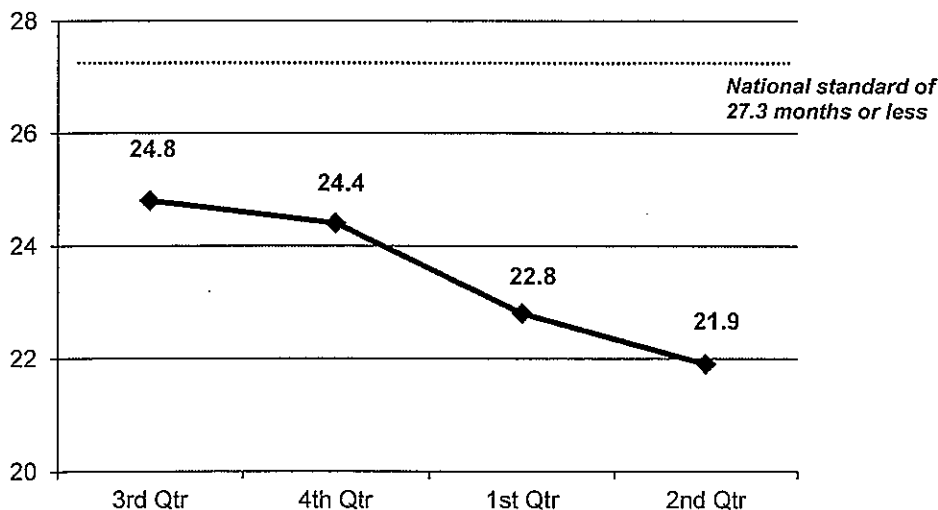


The majority of the children available for adoption at the end of the quarter resided in either a foster family or a pre-adoptive home.

Meeting Agency Policies

LENGTH OF TIME TO ADOPTION

Length of Time From Entry into Foster Care to Finalization of Adoption (Months)



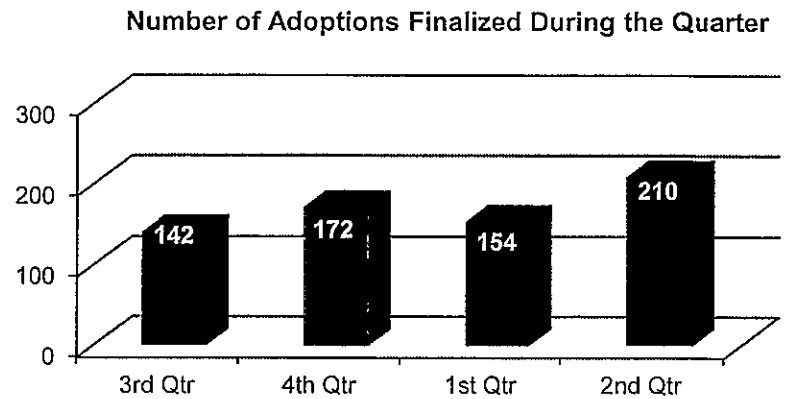
The median length of time from entry into foster care until finalization of adoption for children whose adoptions were finalized during the second quarter was 21.9 months, five months sooner than the national standard of 27.3 months.

Quick Facts

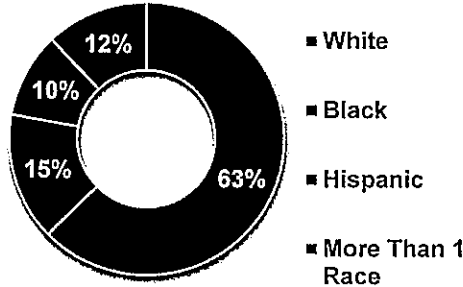
Benefits to Children and Families

FINALIZED ADOPTIONS

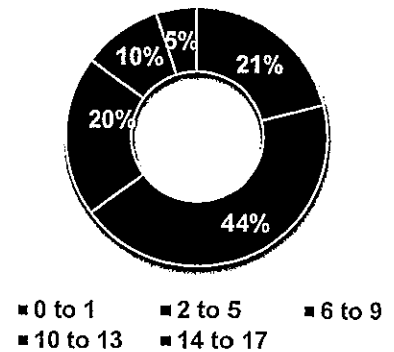
Two hundred and ten adoptions were finalized during the second quarter of SFY 2014.



Race/Ethnicity of Children with Finalized Adoptions



Ages of Children with Finalized Adoption



Children ages 2 to 5 were the largest group of children who were adopted during the quarter.

SUBSIDIZED ADOPTIONS

Subsidies are given to children with special needs, defined as:

- Caucasian and over nine
- African-American and at least two
- At least two members of a sibling group
- Children who have severe medical or psychological needs that require ongoing treatment
- Children at high risk for the development of serious physical, mental or emotional conditions documented by a medical professional.

During the second quarter, 183 children began receiving adoption subsidies. Of those, 146 children were federally-funded subsidies and 37 were state-funded.

During the second quarter, a total of 4,674 children received adoption subsidies.

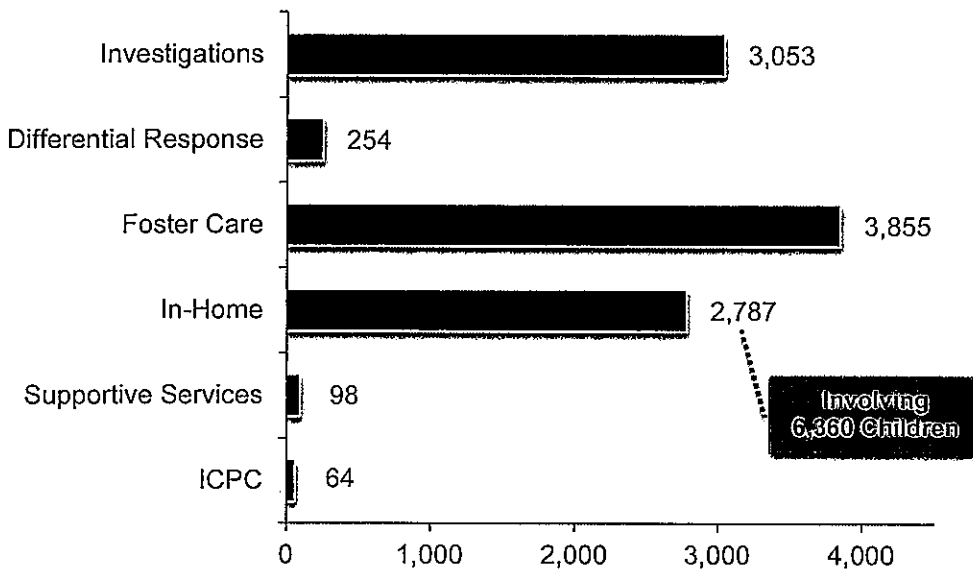
Resources

Quick Facts

Caseworkers and Caseloads

CASELOADS AT THE END OF THE QUARTER

Types of Cases at the End of the Quarter



One foster care case is equal to one child in care; one in-home or supportive services case constitutes an entire family, many of which have multiple children.

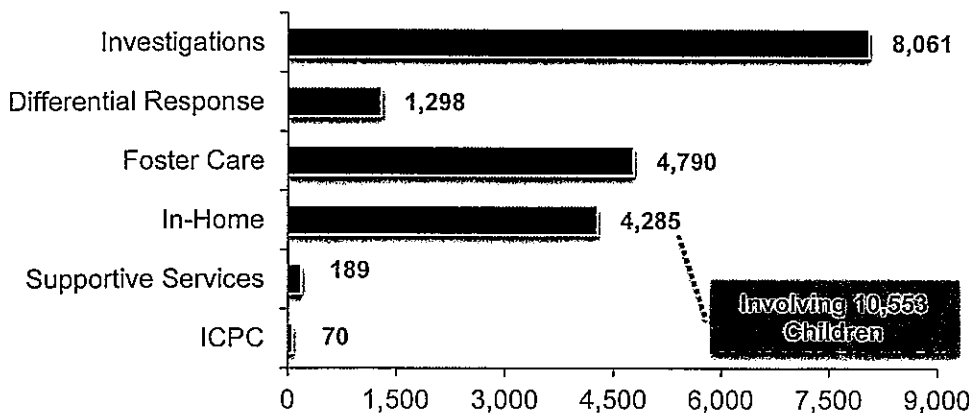
As of the end of the quarter, the Division was responsible for:

- 3,053 investigations of child maltreatment and 254 DR cases,
- 3,855 foster care cases (3,634 excluding adoption cases),
- 2,787 in-home cases, involving 6,360 children,
- 98 supportive services cases and 64 ICPC cases.

This is while the Division was equipped with 363 family service workers, which included 90 staff dedicated to investigations full time and another 34 staff who conducted investigations while also carrying other cases.

CASELOADS HANDLED DURING THE QUARTER

Types of Cases Served During the Quarter



This shows the number of cases that cycled through the system anytime during the quarter (as opposed to those open at the end of the quarter, described above).

The Division oversaw 8,061 investigations; 4,790 children in foster care; 4,285 in-home protective services cases; 1,298 DR cases; 189 supportive services cases; and 70 interstate compact for the placement of children (ICPC) cases.

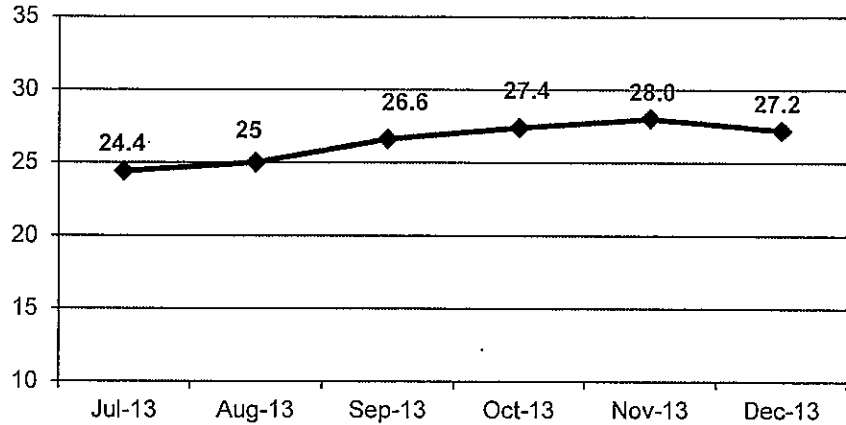
Quick Facts

AVERAGE CASELOAD

The average caseload statewide stood at just over 27 cases per worker at the end of the quarter. This exceeds standards of about 15 cases per worker set by the Child Welfare League of America.

The average caseload for each county as of December 31, 2013 is presented in Appendix E.

Average Caseload at the End of Month

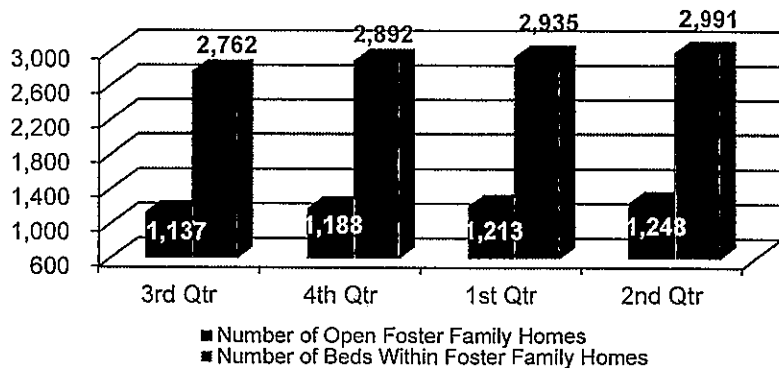


Foster Homes

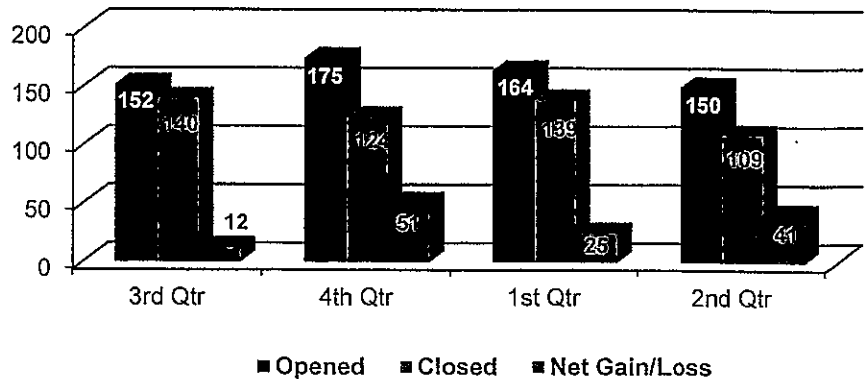
FOSTER HOMES AND BEDS

The number of foster homes increased by about two percent during the quarter.

Number of Foster Homes and Beds at the End of Quarter



Number of Foster Family Homes Opened and Closed During the Quarter



During the quarter 150 new foster homes were opened and 109 were closed, resulting in a net gain of 41 foster homes.

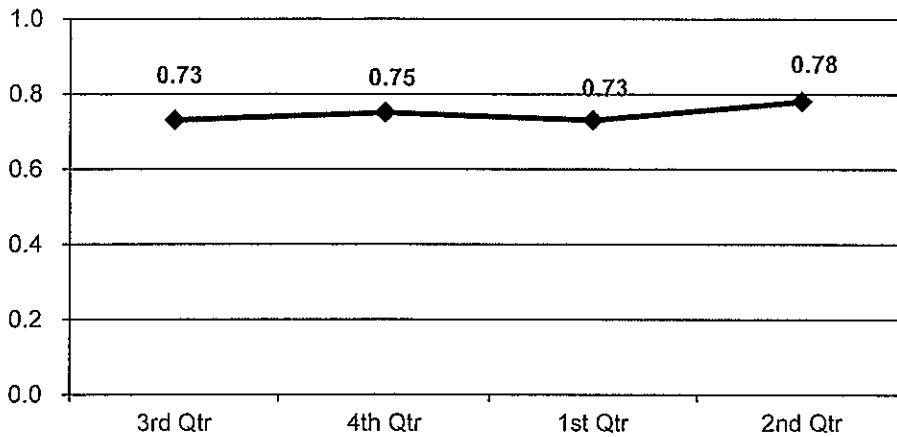
Appendix F displays the closure reasons for the 109 foster homes that closed during the quarter.

Quick Facts

RATIO OF FOSTER HOME BEDS TO FOSTER CHILDREN

The ratio of licensed foster home beds to children in foster care is less than one (0.78) at the end of the quarter, giving workers few choices of where to place children.

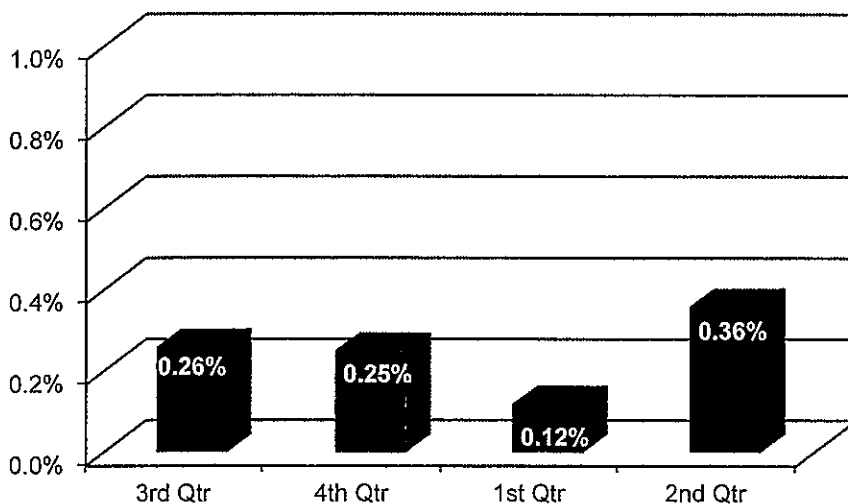
Foster Bed to Foster Child Ratio



PERCENTAGE OF FOSTER FAMILIES WITH TRUE REPORTS OF MALTREATMENT

Only five reports where foster parents were identified as alleged offenders were determined to be true during the quarter. Based on the 1,367 foster homes active during that period, the percentage of foster families with a true report of maltreatment was 0.36 percent.

Percentage of Foster Families with True Reports of Maltreatment



Appendix G provides more detail on maltreatment reports concerning foster homes.

Appendix A: Breakdown of Child Maltreatment Reports Received During the Quarter and Substantiation Rates of Maltreatment Investigations⁴

	DCFS				CACD		
	Total Assessments Assigned for DR	Total Assessments Assigned for Investigation	True Investigations	Percent True	Total Assessments Assigned for Investigation	True Investigations	Percent True
Third Quarter 2013	192	6,677 <i>6675 Closed</i>	1,417	21%	1,338 <i>1325 Closed</i>	505	38%
Fourth Quarter 2013	605	6,701 <i>6688 Closed</i>	1,476	22%	1,341 <i>1310 Closed</i>	522	40%
First Quarter 2014	643	5,848 <i>5791 Closed</i>	1,327	23%	1,331 <i>1263 Closed</i>	558	44%
Second Quarter 2014	1,062	6,214 <i>5,453 Closed</i>	1,232	23%	1,318 <i>1,271 Closed</i>	539	42%

⁴ The data cited in this appendix run two months behind the referenced quarter (e.g., the first quarter refers to 8/1/2013 through 11/30/2013); as a result, the numbers cited in this appendix differ from those cited throughout the report which considers the actual quarter. This is because investigations have a 45-day completion timeframe and this allows enough time to pass to measure the disposition of the investigations. An investigation is excluded from the calculation of the substantiation rate in the event that it has not yet been closed (and thus a disposition has not yet been rendered).

Appendix B: Summary of Reports Involving Child Fatality

True Fatality Reports

Child	County	Age	Race	Gender	Date of Death	Allegations or Primary Cause of Death	Placement at the Time of Incident	Relationship of Alleged Offender to the Child	Agency Conducting the Investigation	Legal Action By the Department	Services Provided Prior to the Incident	Services Provided After the Incident
Colton Whitman	Izard	<1	White	Male	10/20/2013	Inadequate Supervision	In-Home	Family Member	CACD	None	None	PS Case
Blake Langwell	White	14	White	Male	10/20/2013	Inadequate Supervision	In-Home	Family Member	CACD	None	Prior Investigations	PS case
Yankee Combee	Saline	<1	White	Male	11/5/2013	Inadequate Supervision	In-Home	Family Member	CACD	None	Prior Investigations	FC Case
Levi Wayne Watson	White	4	White	Male	11/8/2013	Inadequate Supervision	In-Home	Family Member	CACD	None	Prior Investigations	None
Michael Crook III	Hempstead	<1	Black	Male	11/6/2013	Physical Abuse	In-Home	Family member	CACD	None	Prior Investigations	PS Case
Braxton Fender	Greene	4	White	Male	11/26/2013	Inadequate Supervision	In-Home	Family Member	CACD	None	SS Case	SS Case
Guadalupe Candelario	White	<1	Hispanic	Female	12/11/2013	Neglect	In-Home	Mother	CACD	None	Prior Investigations	None

Unsubstantiated Fatality Reports

There were no unsubstantiated child fatality reports during the second quarter of SFY 2014.

ending Fatality Reports

Child	County	Age	Race	Gender	Date of Death	Allegations or Preliminary Cause of Death	Placement at the Time of Incident	Relationship of Alleged Offender to the Child	Agency Conducting the Investigation	Legal Action By the Department	Services Provided Prior to the Incident	Services Provided After the Incident
Landon Cardin	Union	2	White	Male	12/13/2013	Physical Abuse	In-Home	Unknown	CACD	None	Prior Investigations	PS Case

Appendix C: Summary of Reports Involving Near Child Fatality

True Near Fatality Reports

Child #	County	Age	Race	Gender	Date of Near Fatality	Allegations or Probable Cause of Near Fatality	Placement at the Time of Incident	Relationship of Alleged Offender to the Child	Agency Conducting the Investigation	Legal Action By the Department	Services Provided Prior to the Incident	Services Provided After the Incident
Child #1	Searcy	<1	White	Female	10/3/2013	Physical Abuse	In-Home	Unknown	CACD	None	None	FC Case
Child #2	Crittenden	<1	Black	Male	11/24/2013	Physical Abuse	In-Home	Family Member	CACD	None	None	FC Case

Unsubstantiated Near Fatality Reports

There were no unsubstantiated near child fatality reports during the second quarter of SFY 2014.

Pending Near Fatality Reports

There were no pending near child fatality reports during the second quarter of SFY 2014.

Appendix D: Summary of Reports Involving Fatalities of Children in Foster Care Who Did Not Receive a Maltreatment Investigation

Child #	County	Age	Race	Gender	Date of Death	Primary Cause of Death	Placement at Time of Incident	Length of Stay in Placement	Services Provided After the Incident
Child #1	Crawford	<1	White	Male	12/8/2013	Medical Issues	Foster Care	None	Foster Care
Child #2	Lonoke	<1	Black	Male	12/25/2013	SIDS	Foster Care	None	Foster Care

Appendix E: Average Caseload as of December 31, 2013, by County



- *Due to the fact that Desha and Pike counties did not have any family service workers at the time of this report, their cases were assigned to workers from other counties.*

Appendix F: Foster Home Closure Reasons

Area	County	Total	DHS Request	Family No Longer Interested	Non-Compliance/Failed Re-Evaluation	Other	Provider End Dated	Provider Request	Provider/Services No Longer Needed	Death of Parent	Founded Abuse/Neglect
1	Benton (Bentonville)	12	0	0	0	3	7	2	0	0	0
1	Carroll (Berryville)	0	0	0	0	0	0	0	0	0	0
1	Madison (Huntsville)	1	0	0	0	0	1	0	0	0	0
1	Washington (Fayetteville)	2	0	0	0	1	1	0	0	0	0
	Area Total	15	0	0	0	4	9	2	0	0	0
2	Crawford (Van Buren)	2	0	0	0	0	2	0	0	0	0
2	Franklin (Ozark)	2	0	0	0	1	0	1	0	0	0
2	Johnson (Clarksville)	1	0	0	0	0	1	0	0	0	0
2	Logan (Booneville)	0	0	0	0	0	0	0	0	0	0
2	Logan (Paris)	0	0	0	0	0	0	0	0	0	0
2	Scott (Waldron)	0	0	0	0	0	0	0	0	0	0
2	Sebastian (Fort Smith)	13	3	0	0	2	0	7	1	0	0
2	Yell (Danville)	0	0	0	0	0	0	0	0	0	0
	Area Total	18	3	0	0	3	3	8	1	0	0
3	Clark (Arkadelphia)	0	0	0	0	0	0	0	0	0	0
3	Garland (Hot Springs)	1	0	0	0	0	0	1	0	0	0
3	Hot Spring (Malvern)	0	0	0	0	0	0	0	0	0	0
3	Howard (Nashville)	2	1	0	0	0	1	0	0	0	0
3	Montgomery (Mount Ida)	0	0	0	0	0	0	0	0	0	0
3	Perry (Perryville)	0	0	0	0	0	0	0	0	0	0
3	Pike (Murfreesboro)	0	0	0	0	0	0	0	0	0	0
3	Polk (Mena)	0	0	0	0	0	0	0	0	0	0
3	Saline (Benton)	1	0	0	0	0	1	0	0	0	0
	Area Total	4	1	0	0	0	2	1	0	0	0
4	Columbia (Magnolia)	1	0	1	0	0	0	0	0	0	0
4	Hempstead (Hope)	2	0	1	0	0	1	0	0	0	0
4	Lafayette (Lewistown)	0	0	0	0	0	0	0	0	0	0
4	Little River (Ashdown)	0	0	0	0	0	0	0	0	0	0
4	Miller (Texarkana)	1	1	0	0	0	0	0	0	0	0
4	Nevada (Prescott)	0	0	0	0	0	0	0	0	0	0
4	Ouachita (Camden)	1	0	1	0	0	0	0	0	0	0
4	Sevier (DeQueen)	0	0	0	0	0	0	0	0	0	0
4	Union (El Dorado)	1	0	0	0	0	1	0	0	0	0
	Area Total	6	1	3	0	0	2	0	0	0	0
5	Baxter (Mountain Home)	0	0	0	0	0	0	0	0	0	0
5	Boone (Harrison)	0	0	0	0	0	0	0	0	0	0
5	Conway (Morrilton)	0	0	0	0	0	0	0	0	0	0
5	Faulkner (Conway)	4	2	0	1	0	0	1	0	0	0
5	Marion (Yellville)	0	0	0	0	0	0	0	0	0	0
5	Newton (Jasper)	1	0	0	0	0	0	1	0	0	0
5	Pope (Russellville)	1	0	0	0	0	1	0	0	0	0
5	Searcy (Marshall)	0	0	0	0	0	0	0	0	0	0
5	Van Buren (Clinton)	1	1	0	0	0	0	0	0	0	0
	Area Total	7	3	0	1	0	1	2	0	0	0
6	Pulaski	0	0	0	0	0	0	0	0	0	0
6	Pulaski (East)	3	1	0	0	0	1	1	0	0	0
6	Pulaski (Jacksonville)	4	1	0	0	0	3	0	0	0	0
6	Pulaski (North)	1	1	0	0	0	0	0	0	0	0
6	Pulaski (South)	7	3	0	0	1	3	0	0	0	0
6	Pulaski (Southwest)	2	0	0	0	0	1	1	0	0	0
	Area Total	17	6	0	0	1	8	2	0	0	0

Area	County	Total	DHS Request	Family No Longer Interested	Non-Compliance/Failed Re-Evaluation	Other	Provider End Dated	Provider Request	Provider/Services No Longer Needed	Death of Parent	Founded Abuse/Neglect
7	Bradley (Warren)	1	0	0	0	0	1	0	0	0	0
7	Calhoun (Hampton)	0	0	0	0	0	0	0	0	0	0
7	Cleveland (Rison)	0	0	0	0	0	0	0	0	0	0
7	Dallas (Fordyce)	0	0	0	0	0	0	0	0	0	0
7	Grant (Sheridan)	2	0	0	0	0	1	1	0	0	0
7	Jefferson (Pine Bluff)	3	0	0	0	0	1	1	0	0	1
7	Lincoln (Star City)	0	0	0	0	0	0	0	0	0	0
7	Lonoke (Lonoke)	3	0	0	0	0	2	1	0	0	0
7	Prairie (DeValls Bluff)	1	1	0	0	0	0	0	0	0	0
	Area Total	10	1	0	0	0	5	3	0	0	1
8	Clay (Piggott & Corning)	1	0	0	1	0	0	0	0	0	0
8	Craighead (Jonesboro)	8	0	1	0	0	2	4	1	0	0
8	Fulton (Salem)	1	0	1	0	0	0	0	0	0	0
8	Greene (Paragould)	3	0	0	0	1	0	2	0	0	0
8	Izard (Melbourne)	0	0	0	0	0	0	0	0	0	0
8	Lawrence (Walnut Ridge)	0	0	0	0	0	0	0	0	0	0
8	Mississippi (Blytheville)	0	0	0	0	0	0	0	0	0	0
8	Mississippi (Osceola)	0	0	0	0	0	0	0	0	0	0
8	Randolph (Pocahontas)	1	0	0	0	0	1	0	0	0	0
8	Sharp (Ash Flat)	2	0	0	0	0	1	1	0	0	0
	Area Total	16	0	2	1	1	4	7	1	0	0
9	Cleburne (Heber Springs)	1	0	0	0	0	0	1	0	0	0
9	Crittenden (West Memphis)	3	0	0	0	1	2	0	0	0	0
9	Cross (Wynne)	0	0	0	0	0	0	0	0	0	0
9	Independence (Batesville)	0	0	0	0	0	0	0	0	0	0
9	Jackson (Newport)	0	0	0	0	0	0	0	0	0	0
9	Poinsett (Harrisburg)	0	0	0	0	0	0	0	0	0	0
9	Stone (Mountain View)	1	0	0	0	0	1	0	0	0	0
9	White (Searcy)	4	0	0	0	0	1	2	1	0	0
9	Woodruff (Augusta)	0	0	0	0	0	0	0	0	0	0
	Area Total	9	0	0	0	1	4	3	1	0	0
10	Arkansas (Dewitt)	0	0	0	0	0	0	0	0	0	0
10	Arkansas (Stuttgart)	0	0	0	0	0	0	0	0	0	0
10	Ashley (Hamburg)	0	0	0	0	0	0	0	0	0	0
10	Chicot (Lake Village)	0	0	0	0	0	0	0	0	0	0
10	Desha (McGehee)	1	0	0	0	0	1	0	0	0	0
10	Drew (Monticello)	0	0	0	0	0	0	0	0	0	0
10	Lee (Marianna)	0	0	0	0	0	0	0	0	0	0
10	Monroe (Brinkley)	0	0	0	0	0	0	0	0	0	0
10	Monroe (Clarendon)	0	0	0	0	0	0	0	0	0	0
10	Phillips (Helena)	1	0	0	0	0	0	0	1	0	0
10	St. Francis (Forrest City)	2	0	1	0	0	0	0	1	0	0
	Area Total	4	0	1	0	0	1	0	2	0	0
99	Out of State	3	0	0	0	1	2	0	0	0	0
	Statewide Total	109	15	6	2	11	41	28	5	0	1

Appendix G: Summary of Foster Care Maltreatment Reports

Characteristics of Children in Foster Care Involved in Allegations of Maltreatment, 2nd Quarter SFY 2014

Eighty nine reports of alleged maltreatment, involving 103 children in foster care, were received by the hotline during the second quarter of SFY 2014.

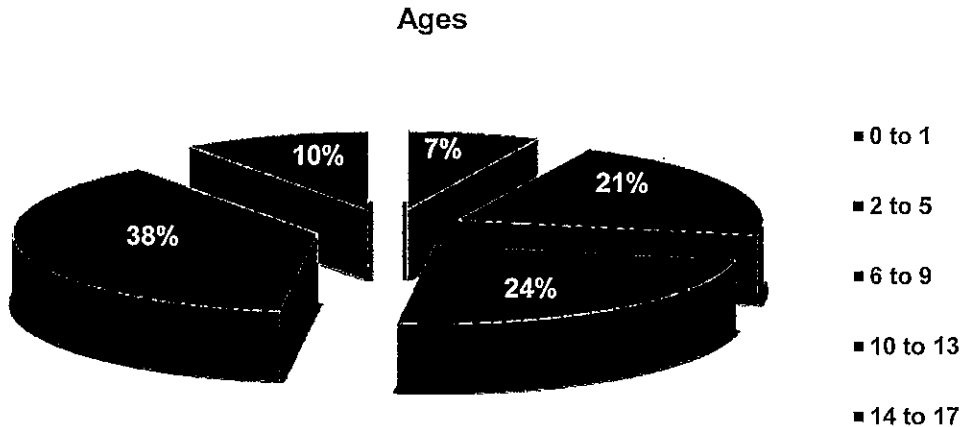
In 23 reports involving 32 children, foster parents⁵ were identified as the alleged offenders. As shown by the following chart, five of those reports were found to be true and all five homes were subsequently closed.

Foster Home Maltreatment Reports
2nd Quarter SFY 2014

True	Unsubstantiated	Pending
5	14	4

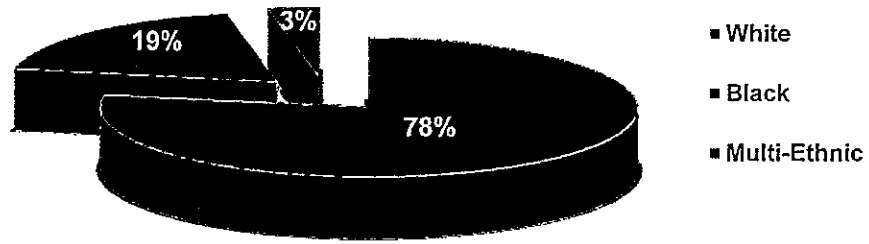
All allegations of maltreatment concerning foster homes are investigated by the Crimes Against Children Division (CACD) of the Arkansas State Police. DCFS staff do not actively participate in the investigation of these reports. Allegations of maltreatment regarding foster homes require the agency to assess the safety of all children residing in the home.

The following charts describe the characteristics of the 32 foster children involved in allegations of maltreatment—with foster parents as the alleged offenders.

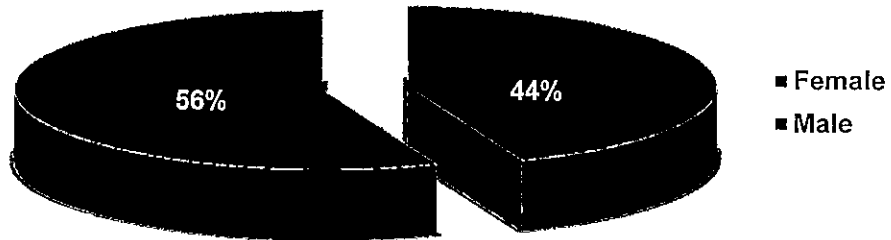


⁵ This includes foster family homes and therapeutic foster homes

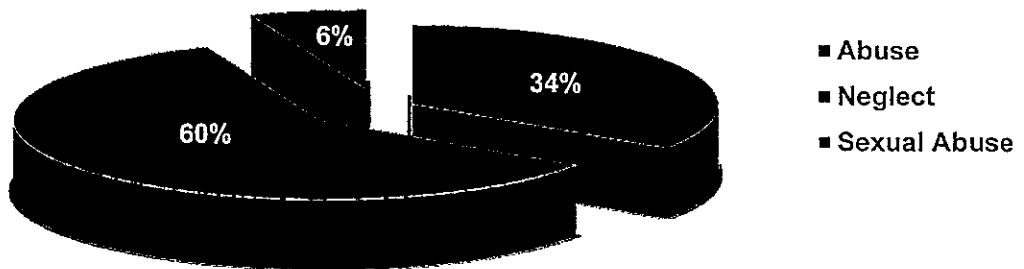
Race/Ethnicity



Gender



Allegation



County of Foster Homes in Which Alleged Maltreatment Occurred

County	Number of Children Involved in Maltreatment Report	County	Number of Children Involved in Maltreatment Report
Washington	4	Desha	1
Johnson	3	Drew	1
Calhoun	3	Howard	1
Phillips	3	Lawrence	1
Lee	3	Lonoke	1
Pulaski	2	Mississippi	1
Benton	2	Montgomery	1
Craighead	1	Sebastian	1
Crawford	1	Jefferson	1
Cross	1		