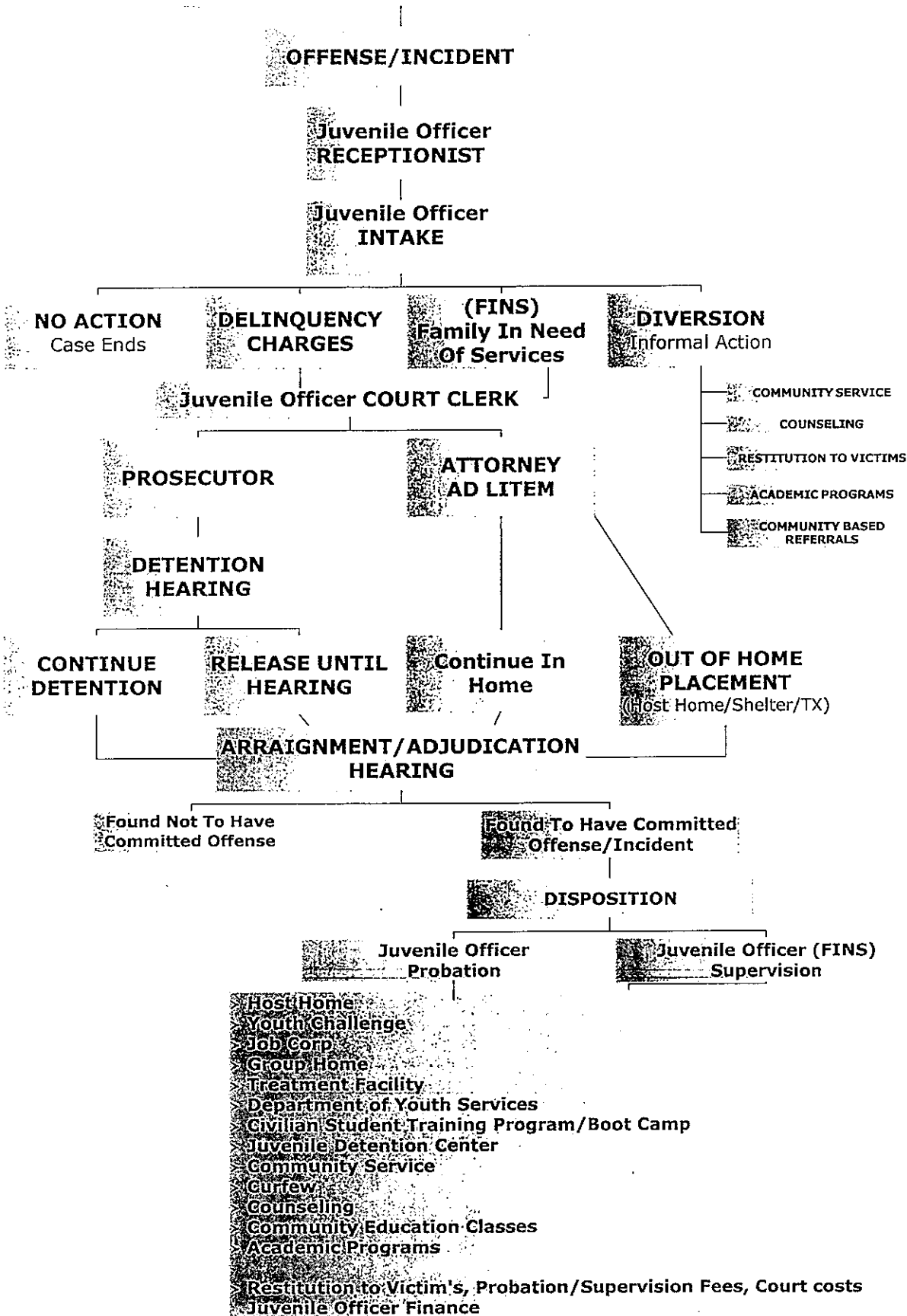
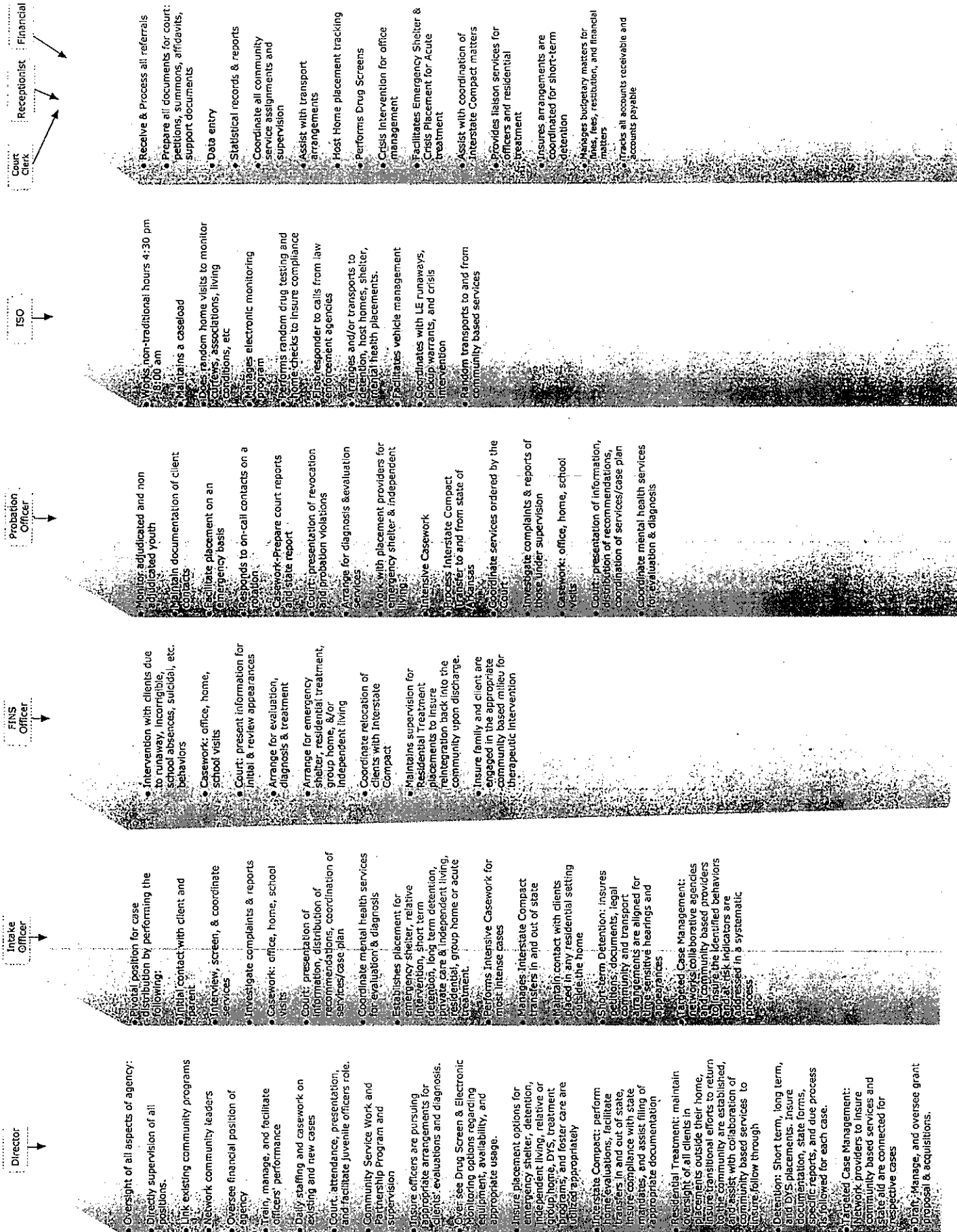


14th JUDICIAL DISTRICT FLOW CHART

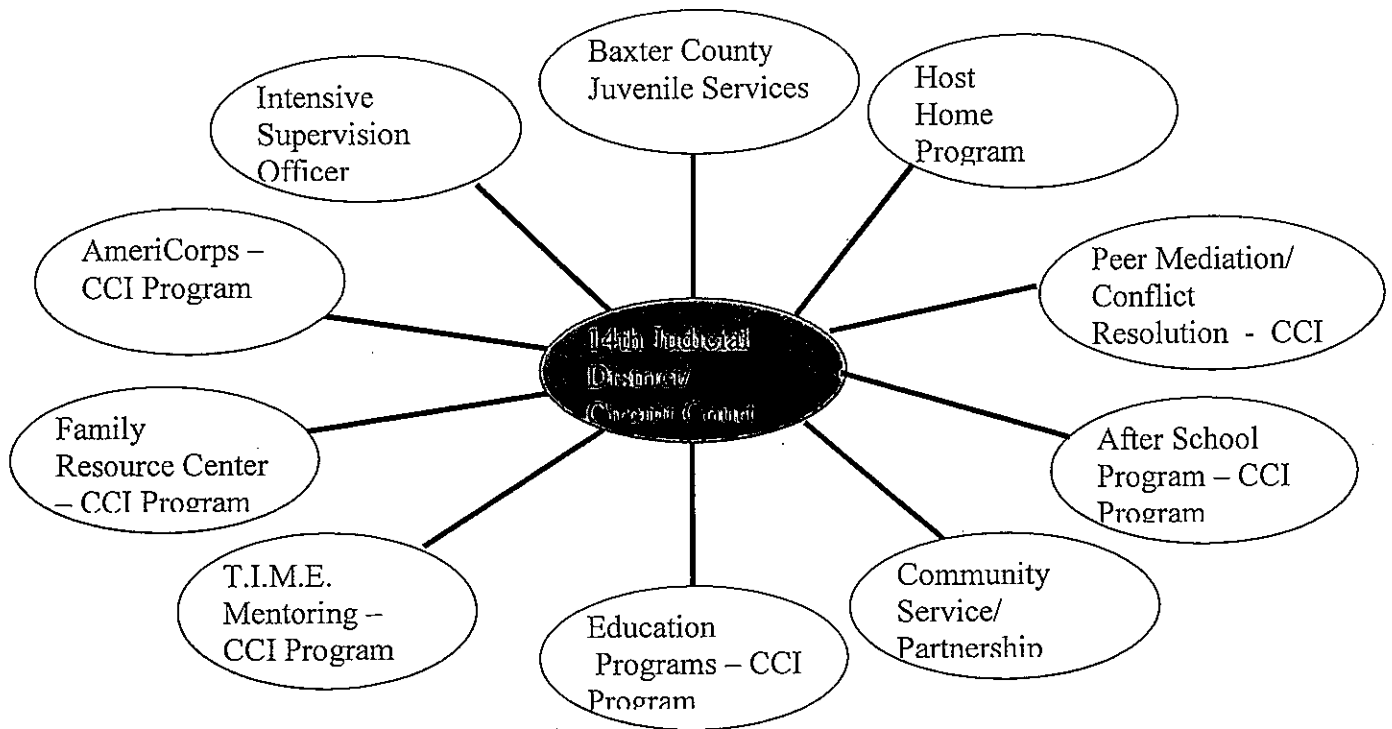
All positions and functions are under the direct supervision of the Director/Chief Juvenile Officer



BCJS Personnel a Job Duties



Community Based Programs



- Baxter County has progressive, proactive programs of which it can be justifiably proud.
- Due to the remoteness of our location and the fact that we are 2 ½ hours driving time from such programs and services, it is imperative that BCJS take the initiative to provide these resources to our families. Other Class IV counties either have these services within their counties, very nearby, or are located close to a DYS contract provider.
- Without support positions established as juvenile officers (receptionist, court clerk and financial) Baxter County would be limited in its ability to provide the community-based programs recommended by the OJJDP, Arkansas Division of Youth Services. (Listing follows)
- BCJS activities are research-based, model programs as identified by the U.S. Department of Justice, Office of Juvenile Justice & Delinquency Prevention; for example:
 - “Emergency Placement” on which Host Home is based
 - “Parent Training” on which the Family Resource Center classes are based
 - “Mentoring” on which the T.I.M.E. Mentoring Program is based
 - “Afterschool/Recreation” on which the BCAS after-school program is based
 - “Conflict Resolution/Interpersonal Skills” on which the Peer Mediation/Conflict Resolution program is based
 - “Aggression Replacement Training” on which the BCAS character education program is based
 - “Drug & Alcohol Education” on which Adolescent Substance Abuse Awareness is based
 - “Wrap-around Case Management” on which CASSP is based
- On the following pages are Arkansas Department of Human Services, Division of Youth Services, Community-Based Model Programs enacted by Baxter County Juvenile Services.

Community-Based Programs

Kansas
Department
of Human
Services

[DYS Home](#) | [DHS Home](#)

DYS

Mission/History

Community-Based Programs

The Division provides funding for a comprehensive community based service delivery system serving each of the state's 28 Juvenile Judicial Districts. The spectrum of services and programs include casework, diagnosis and evaluation, emergency shelter, intensive casework management, Interstate Compact on Juveniles, residential treatment programs, targeted case management, therapy services, diversion programs, Aftercare for committed offenders, supervised (transitional) living services, and sanctions.

DYS Points
of Contact

The community-based program network consists of thirteen (13) non-profit organizations. The Division contracts with these programs to provide residential and non-residential services to youth who are delinquents, status offenders (FINS), or youth at risk (i.e., youth who exhibit behavior that if continued would bring them into contact with the juvenile justice system). Services are provided within the juvenile's own community, which is consistent with the concept of providing treatment in the least restrictive environment.

Grant
Announcements

RFP's

SIS Board
updates

Community
Based
Services

Community-Based Services

Education
Services

Casework – *BCJS Probation, FINS and Intake Juvenile Officers*

Juvenile
Justice
Delinquency &
Prevention
(JJDP)

Casework/IST**

Juvenile
Correctional
Facilities

Casework/Court Appearance – *BCJS Probation, FINS, Intake and Court Clerk Juvenile Officers*

Juvenile
Treatment
Centers

Casework/Group Presentations – *BCJS Family Resource Center*

Contract
Provider
Directory

Community Service Supervision* - *BCJS Receptionist Juvenile Officer*

Juvenile
Justice
Grant
Directory

Day Services* - *Special services through school based programs and mental health support*

DYS
Quarterly
Reports

Diagnosis and Evaluation – *BCJS Probation, FINS, Intake Juvenile Officers in coordination with Mental Health Providers*

DYS
Annual
Reports

Drug Screening* - *BCJS Probation and Intensive Supervision Juvenile Officers*

DYS
Statistical
Reports

Electronic Monitoring* - *BCJS Probation and Intensive Supervision Juvenile Officers (90% of cost is borne by contract provider)*

Emergency Shelter* - *BCJS Host Homes. This program is essential because it provides short-term, emergency placement for juveniles. If not for this service, juveniles would have to be transported to detention or emergency shelter facilities a minimum of 2 ½ hours away from Mountain Home. Other Class IV counties either have facilities within their county or in adjacent counties.*

Independent/Transitional Living Services – *BCJS Host Homes*

Intensive Casework Management – *BCJS Probation, FINS, and Intensive Supervision Juvenile Officers*

Intensive Casework Management/IST** - *BCJS Probation and intensive Supervision Juvenile Officers*

Intensive Casework Management/Travel

Interstate Compact on Juveniles – *BCJS Probation, FINS and Intake Juvenile Officers*

Residential Treatment* - *Placement outside of Baxter County is facilitated by BCJS Probation, FINS and Intake Juvenile Officers*

Short-Term Detention** - *Placement outside of Baxter County is facilitated by BCJS Probation and Intensive Supervision Juvenile Officers*

Targeted Case Management – *BCJS FINS Juvenile Officer*

Therapy* - *Facilitated by BCJS Probation, FINS and Intake Juvenile Officers*

* May be a Sanction

**Sanction only

A Community-Based Provider may offer most, but not necessarily all, of the services listed above in their Judicial District(s).

CBP Service Definitions

CASEWORK

Treatment method that includes direct intervention to address the problems, needs, or adjustments of an individual and/or family. Activities may include counseling, identifying problems, discussing alternatives, planning for solutions, telephone contacts with or on behalf of a client, group work, supervisory conferences, acting as an advocate on the client's behalf, and transportation.

CASEWORK/COURT APPEARANCE

To provide a case worker on a regular basis to scheduled Juvenile Court hearings to assist the Court with its proceedings. The case worker may provide referral assistance, resource information, or accept referrals from the Court.

CASEWORK/GROUP PRESENTATIONS

A variety of group presentations for youth ages ten (10) to eighteen (18) designed to provide educational programs that will prevent the youth from participating in activities that will result in contact with law enforcement and/or the juvenile court system.

CASEWORK (IST)

To provide intensive supervision and tracking services to juveniles who have been initially ordered this service by the court or as a part of a legally authorized Diversion Agreement. The service may also be used as a sanction for non-compliance with a court order or an established Aftercare plan. The primary goal of this program is to support the youth in their homes primarily through individualized, consistently close supervision and monitoring.

COMMUNITY SERVICE SUPERVISION

A program that provides a site for community service work, supervision of the juvenile on the work site by program staff, and reports to the court regarding compliance with the established case plan.

DAY SERVICES

To provide educational and therapeutic services to juveniles who have been initially ordered such services by the court, as a part of a legally authorized Diversion Agreement, or as a sanction for non-compliance with a court order or an established Aftercare Plan. This service is designed to enhance a youth's behavior, academic performance, and interpersonal skills in a structured setting, either in a group or in a one-to-one basis, based on an individual case plan.

DIAGNOSIS AND EVALUATION

Assessment of the nature and extent of a youth's physical, emotional, educational and behavioral problems and recommendations for treatment strategies to remedy the identified problems. The specific diagnostic services provided and level of sophistication of reports produced are based on the individual needs of the referring agency. Allowable components are educational evaluation, social assessment, psychological evaluation, psychiatric evaluation, and consultation with the referring agency.

DRUG SCREENING

Collection and analysis of urine samples to determine if a youth is using drug.

ELECTRONIC MONITORING

A program which electronically monitors a juvenile's presence in his home in order to enable the juvenile to remain in the home.

EMERGENCY SHELTER

Services include room and board in a staff secure facility. The purposes of Emergency Shelters are:

- 1) to provide shelter for a period necessary to make more permanent arrangements,
- 2) to provide a short-term alternative to secure detention, or
- 3) to provide for the immediate return to the community for committed juveniles.

Emergency shelter is limited to a maximum of sixty (60) days in any one six month period. An order from Juvenile Court may supersede the stated time constraints.

INDEPENDENT TRANSITIONAL LIVING SERVICES

These beds are to be used as a step-down placement for committed juveniles released from an institutional placements prior to going back home.

INTENSIVE CASEWORK MANAGEMENT

Services designed for youth committed to the Division of Youth Services. This should provide an Aftercare Plan that includes recommendations for release plans, services to families of committed youth, advocacy on behalf of the youth, supervision, transportation, and follow-up. It may also include visiting juveniles at the residential placement.

Services continue upon completion of the residential phase and transfer back to the community. Services include, but are not limited to, support to complete the provisions of the Aftercare Plan, services to families of committed youth, advocacy on behalf of the youth, supervision, transportation, and follow-up.

INTENSIVE CASEWORK MANAGEMENT/IST

To provide intensive supervision and tracking services to juveniles as a sanction for non-compliance with a court order or an established Aftercare Plan. The primary goal of this program is to support the youth in their homes primarily through individualized, consistently close supervision and monitoring.

INTENSIVE CASEWORK MANAGEMENT/TRAVEL

To provide for visits to the institutional placement of juveniles in the custody of DYS. The visits will include direct contact with the juvenile(s) and participation in staffings when scheduled.

INTERSTATE COMPACT ON JUVENILES

The Interstate Compact on Juveniles provides for the completion of a home evaluation and supervision of out-of-state paroled delinquent juveniles placed in Arkansas. Allowable components include initial evaluation, supervision, follow-up reports, and discharge.

RESIDENTIAL TREATMENT

Twenty-four hour treatment services available for up to six (6) months for each individual placement for youth whose emotional and/or behavioral problems, as diagnosed by a qualified professional, cannot be remedied in his or her own home. An order from Juvenile Court may supersede the stated time constraints.

TARGETED CASE MANAGEMENT

Services that assist an individual or family in accessing needed medical, social, educational, and other services appropriate to the needs of the individual/family. Targeted case management services include completion of a Community Evaluation, client intake, assessment, periodic reassessment, case plan development and review, service referral, coordination and advocacy, monitoring of client service utilization, record keeping and documentation of service contacts and client progress, and transportation.

THERAPY

Therapeutic relationship between the juvenile and a qualified therapist or counselor for the purpose of accomplishing changes that are identified as goals in the case plan through the use of various counseling or therapy techniques. Services to specific individuals may include individual, group or family therapy or counseling, or consultation with the referral source as needed.

SHORT-TERM DETENTION

Short-term detention includes intervention and stabilization of a juvenile in a hardware secure facility that provides a structured setting, close supervision, and necessary interventions to allow the juvenile to return home. Services are limited to fourteen (14) days per sanction. This service may include, but is not limited to, education and room and board.