



Arkansas State Legislature Committee Meeting



AGENDA



- A. Call to Order**
- B. Comments from the Chairs**
 - 1. Senator Stephanie Flowers
 - 2. Representative George B. McGill
- C. Recognize local Legislators**
- D. Welcome**
 - Major General Mark H. Berry, The Adjutant General, Arkansas National Guard
- E. Military Operations of the National Guard**
 - Lieutenant Colonel Paul Jara, Emergency Manager, Joint Directorate of Military Support
- F. Arkansas National Guard, Youth Programs**
 - Brigadier General Keith Klemmer, Deputy Adjutant General, Arkansas National Guard
 - Mrs. Deborah Trammell, Director of Youth ChalleNGe
- G. Other Business**
- H. Adjournment**

Note: There will be a tour of the Youth ChalleNGe Facility upon adjournment of the meeting.

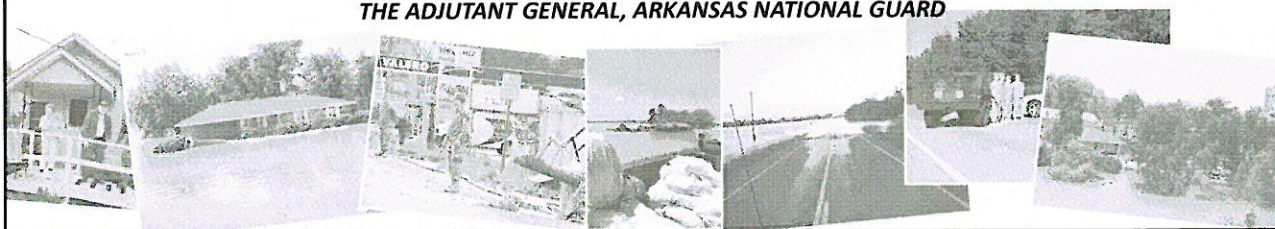
Refreshments available to all in attendance



WELCOME

MAJOR GENERAL MARK H. BERRY

THE ADJUTANT GENERAL, ARKANSAS NATIONAL GUARD



Joint Directorate of Military Support

Arkansas National Guard





AGENDA



- Mission
- Task Organization
- National Guard Support to Civil Authorities (NGSCA)
 - NGSCA Principles
 - Request for Assistance Process
 - Funding
- DOMS Mission Areas
 - Joint Operations Center
 - Future Operations
 - Incident Awareness & Assessment
 - Anti-Terrorism / Force Protection
 - Counter Drug Operations
 - Civil Support Team
- Command Control and Communication
- Mission Ready Packages
- Mission History



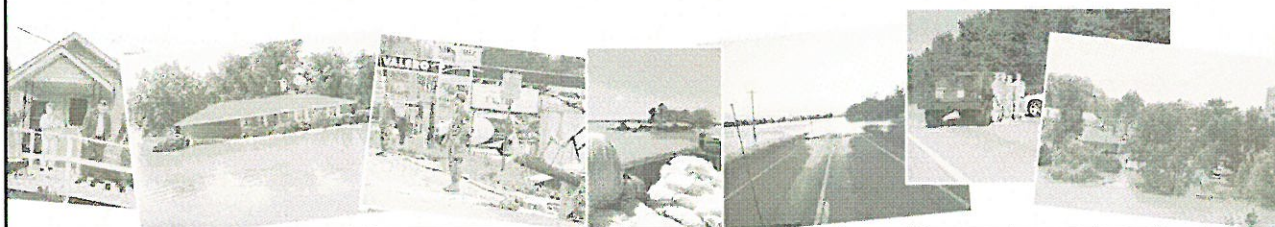
Mission



Mobilize and coordinate the Arkansas National Guard to perform National Guard Support to Civil Authorities in order to save lives, protect key assets, and ensure the peace, health and public safety of the citizens of Arkansas



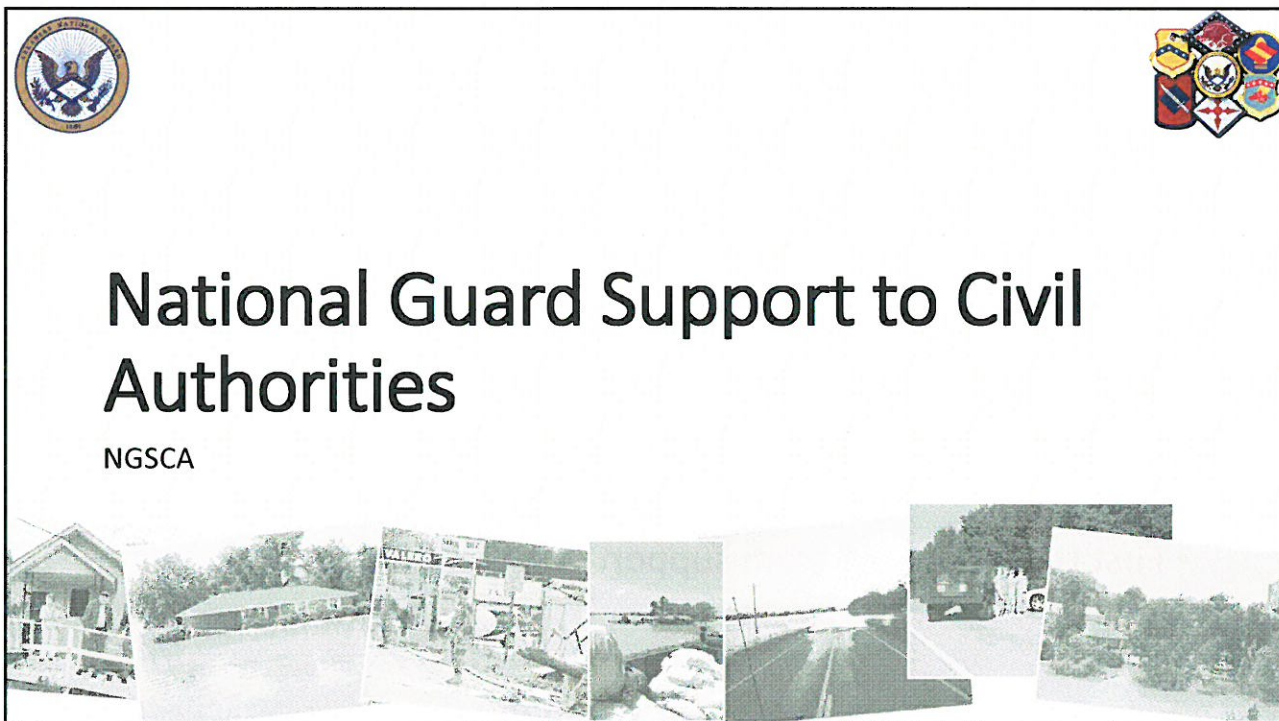
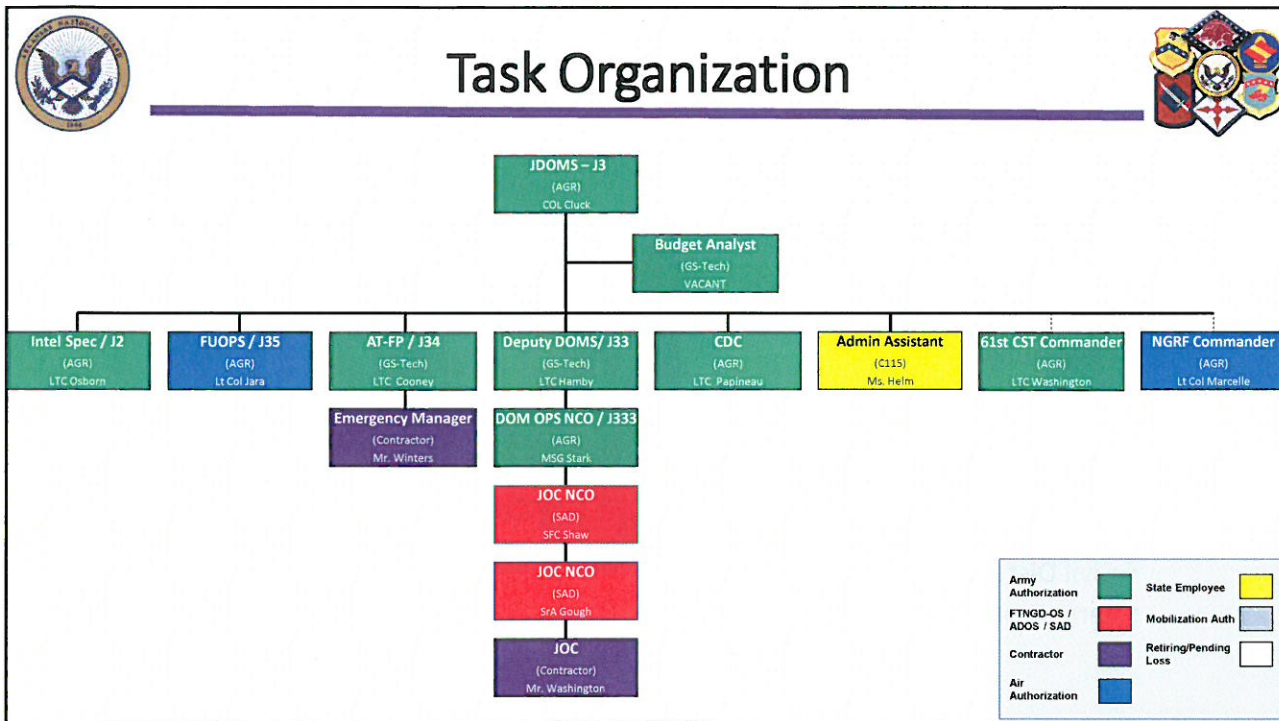
Task Organization



JDOMS Task Organization



- J33, Operations – Military Support
 - Joint Operations Center (JOC)
- J35, Future Operations / Planning
- J34, Anti-Terrorism / Force Protection (ATFP)
- J2, Intelligence
- Counterdrug
- 61st Civil Support Team (CST)
- National Guard Response Force (NGRF)





Guard Commitment Criteria



- Imminent threat to life or property
 - Immediate Response Authority (IRA)
- Local or State declaration
- Local officials request support
 - Through ADEM
 - Through Governor's office



Request for Assistance Process



Animated Slide
5-Clicks



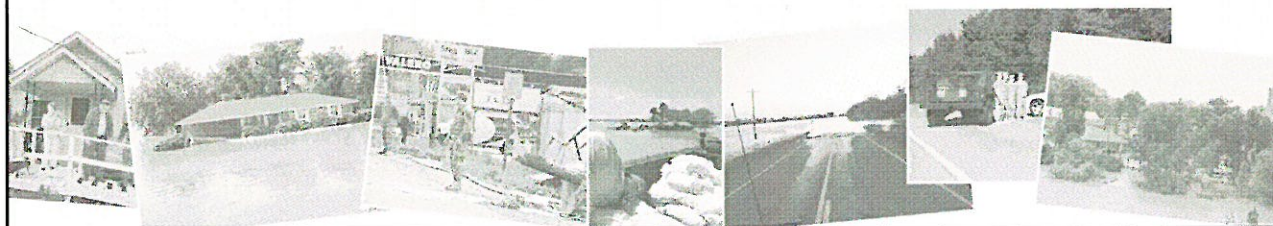
Funding



- **Military Call-up Fund** (from Budget Stabilization Trust Fund AR Code § 19-5-501 (2014))
 - ~\$2.5M available for SAD response
 - Also funds three (3ea) full-time SAD JOC employees
 - May receive subsequent Federal reimbursement under Stafford Act
- **Military Support Revolving (Section 14. Appropriation)**
 - "...to be payable from the Military Support Revolving Fund, for vehicle insurance, supplies, rations, fuel, personnel services, allowances, equipment leases, and various active duty status, operational support and related operating expenses of the State Military Department...":
 - ITEM No. 1, Non-Emergency Call-Up Expenses FY15/16 \$553,423
 - Periodic specialized NGSCA training (Chainsaw and Powerline Safety, etc.)
 - Cannot receive direct Army or USAF reimbursement



DOMS MISSION AREAS





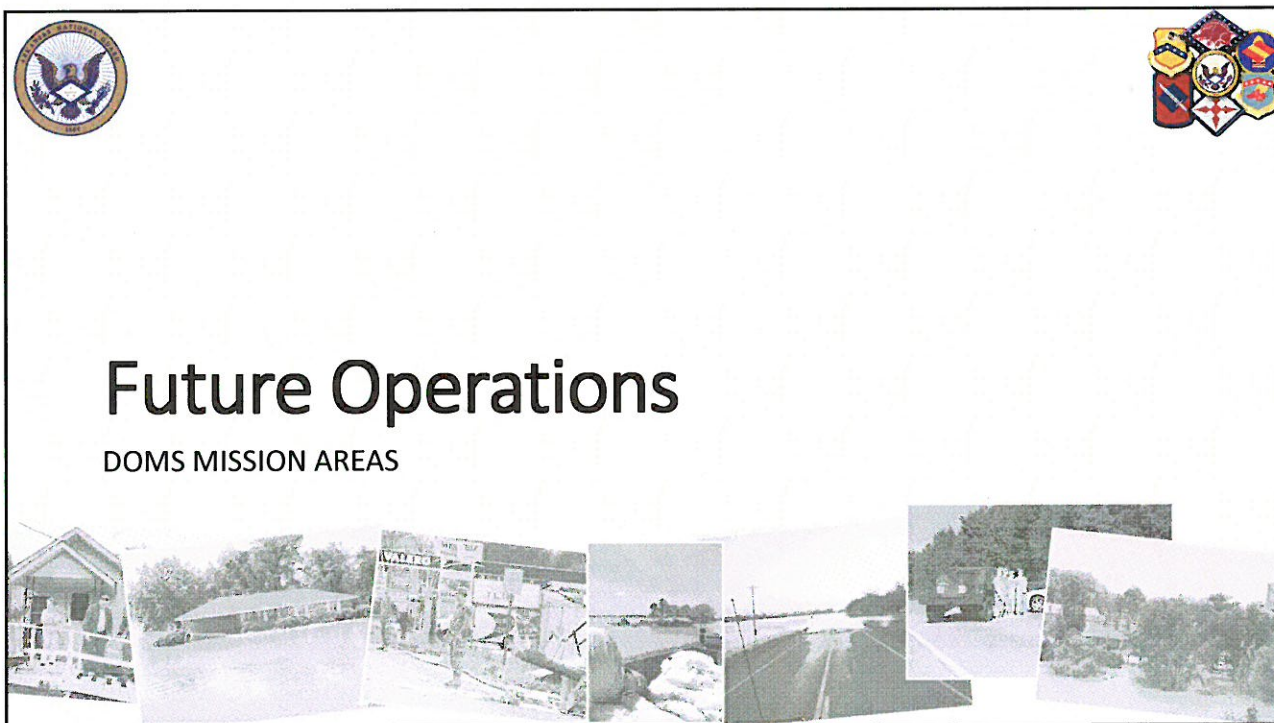
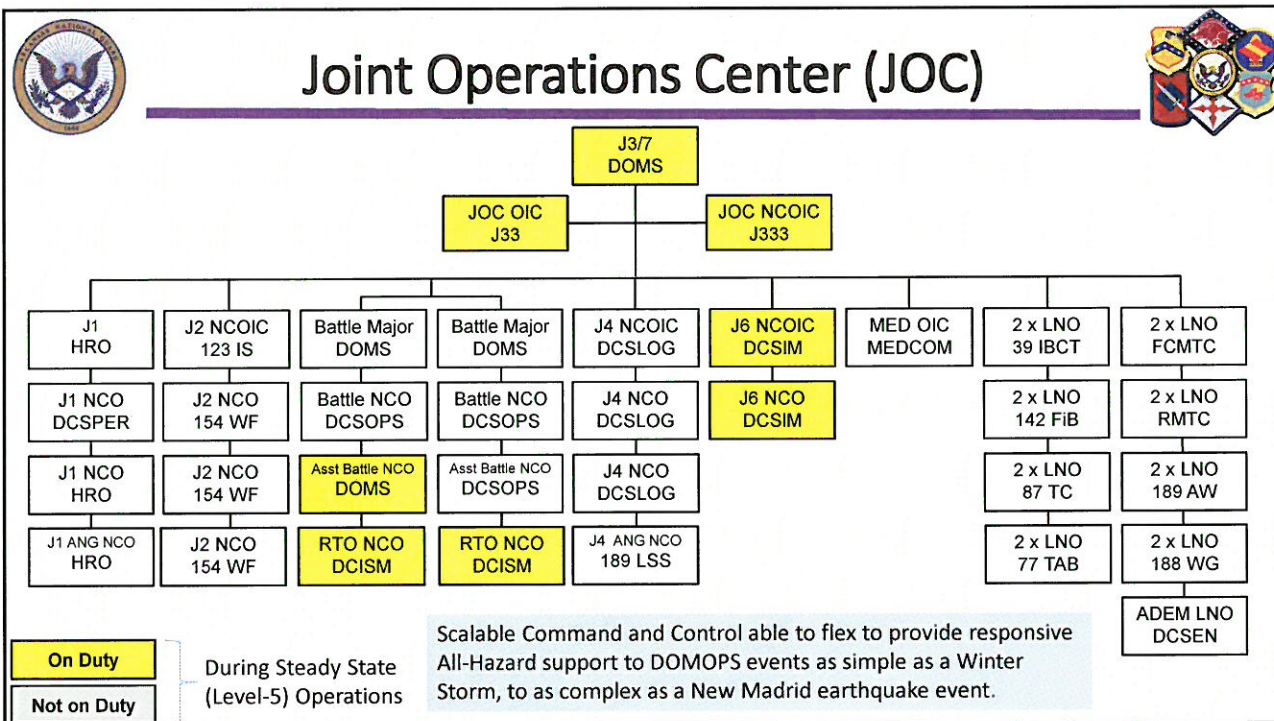
Joint Operations Center (JOC)

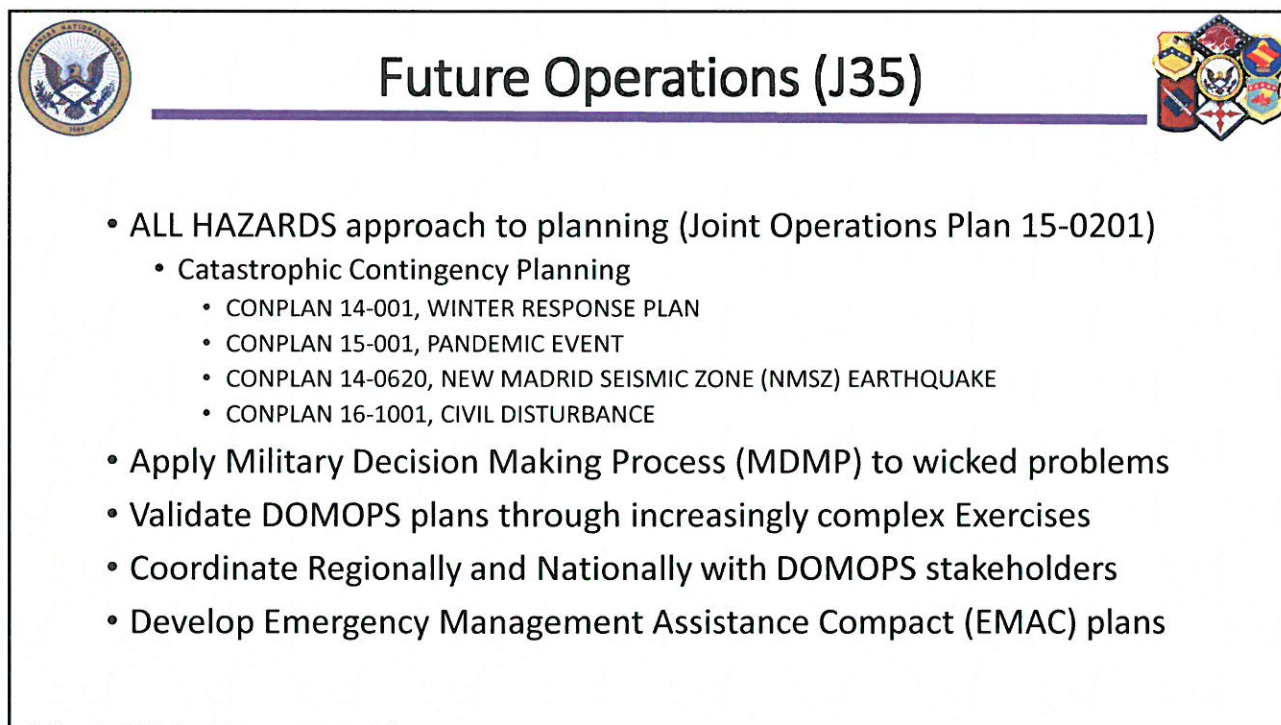
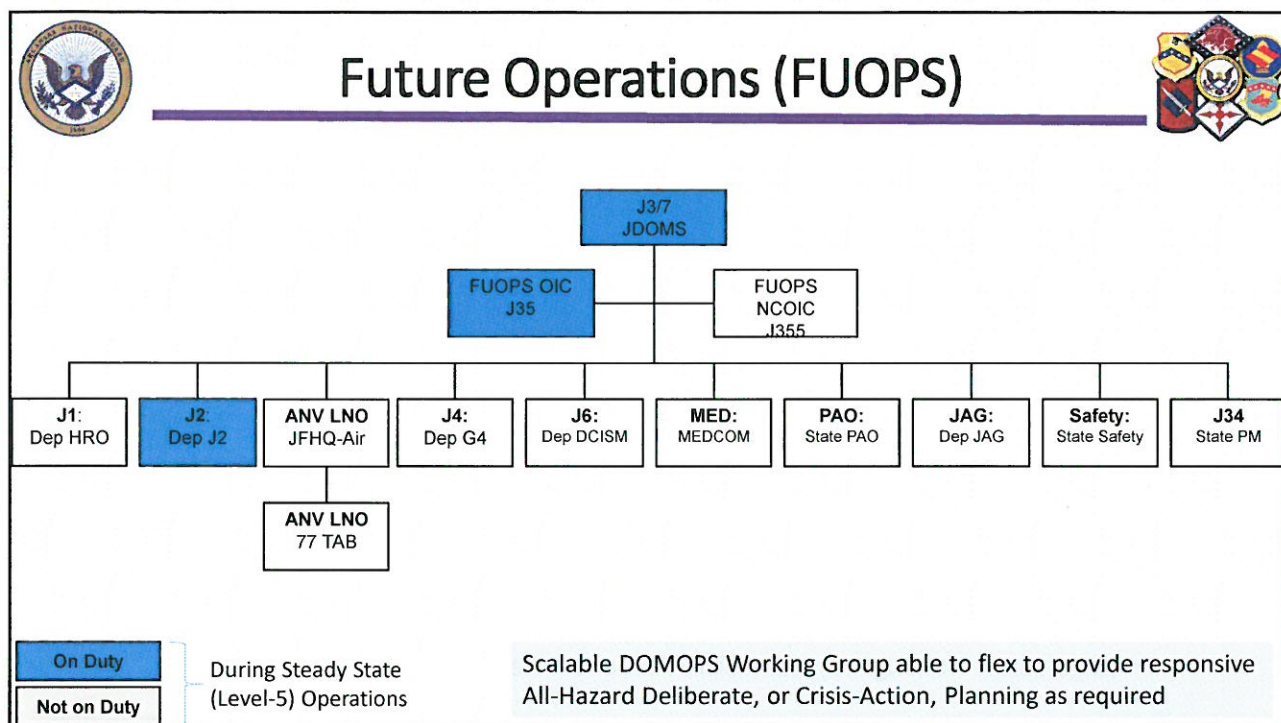
DOMS MISSION AREAS



Joint Operations Center (JOC)









Future Operations

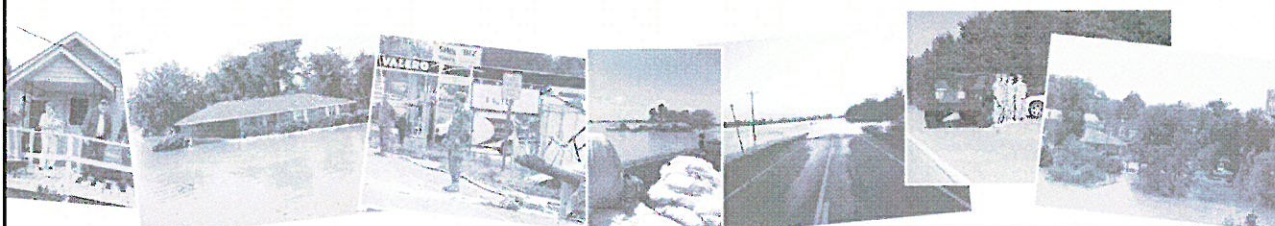



- **Pandemic Influenza CONPLAN**
 - MDMP event resulted in completed CONPLAN, Jan '15
- **Winter Storm CONPLAN**
 - Successful exercise evaluation during 2-day Command-Post Exercise, Nov '15
 - Real-World validation through SAD missions, Winter Storm, Jan '16
- **NMSZ CONPLAN**
 - MDMP event resulted in completed CONPLAN, Mar '14
 - ADEM Arkansas Resource Distribution Rehearsal of Concept (ROC) Drill, Mar '15
 - CUSEC Resource Allocation Workshop, May '16
- **Civil Disturbance CONPLAN**
 - Executive Law Enforcement Table-Top Exercise, Aug '15
 - MDMP event resulted in draft CONPLAN, Sep '15
 - AAR Brief to Civilian Law Enforcement, Dec '16
 - Large-scale, multi-agency, Command-Post and Field Training Exercise, July '16




Incident Awareness / Assessment

DOMS MISSION AREAS







Incident Awareness and Assessment (IAA)




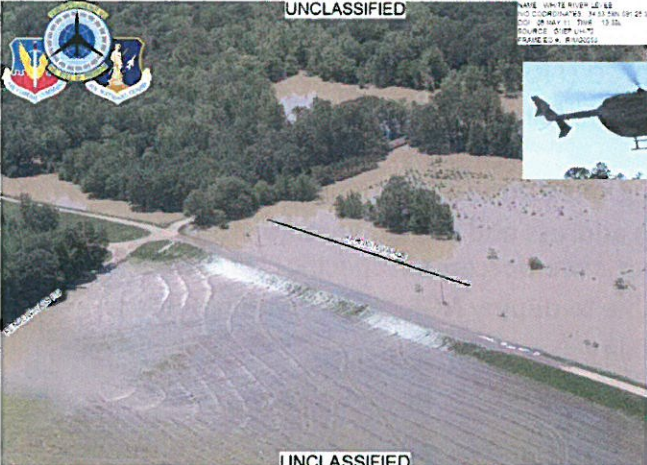
- Provide Situational Awareness to Joint Task Force (JTF) Commander
- Prioritize collection to support JTF requirements
- Coordinate with DHS/FEMA for economy of force; reduce duplication of effort
- Forward IAA requirements to Collection Manager
- Advise on picking best sensor for collection operations
- Provide finished IAA products
- Disseminate collection plans to national level stakeholders
- Give insight into availability of full array (T-10/T32/misc) of IAA assets







Incident Awareness and Assessment (IAA)







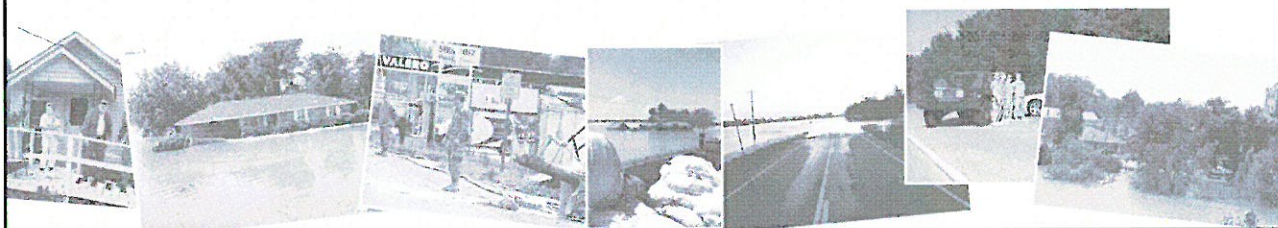


Aerial views of flooding in eastern Arkansas, taken from an Arkansas Army National Guard, UH-72 Lakota Helicopter (6 May 2011)



Antiterrorism / Force Protection AT / FP

DOMS MISSION AREAS



Antiterrorism / Force Protection / Provost Marshal



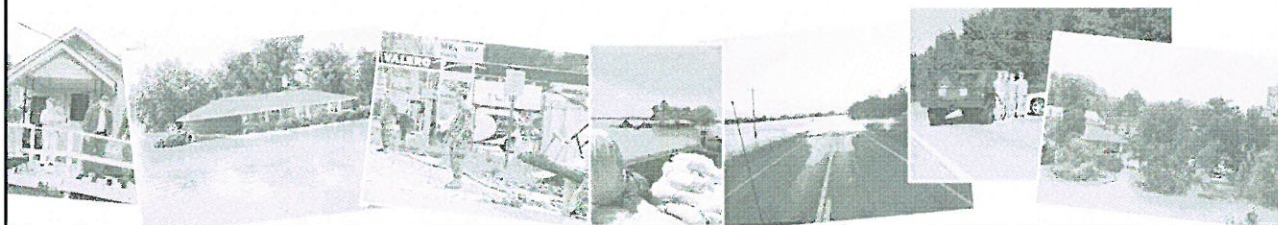
- National Guard Quick Reaction Force (NGRF)
 - NGRF provides a Civil Disturbance trained and certified force for crowd-control / area-security
 - Able to respond / assist in protecting selected assets as required
 - Capable of assisting civil authorities address and mitigate natural, terrorist, and civil disturbance threats utilizing law enforcement specific skill sets
 - Small Quick Reaction Force (QRF) able to deploy NGRF assets within 8-hours
 - Limited Non-Lethal Weapons capability





National Guard Counter Drug (NGCD)

DOMS MISSION AREAS



National Guard Counter Drug Program



- Vision
 - Reduce drug-related threats to national security through military support to the Combatant Commands and our interagency, federal, state, and local law enforcement and community partners
- Mission
 - Support the detection, interdiction, disruption, and curtailment of drug trafficking activities and use through the application of military-unique skills and resources
- Mission Sets
 - Eradication
 - Support to Local/Federal Law Enforcement
- Counter Drug Guardsmen
 - On FTNGDOS orders and have commitments to their units to attend Drill and Annual Training

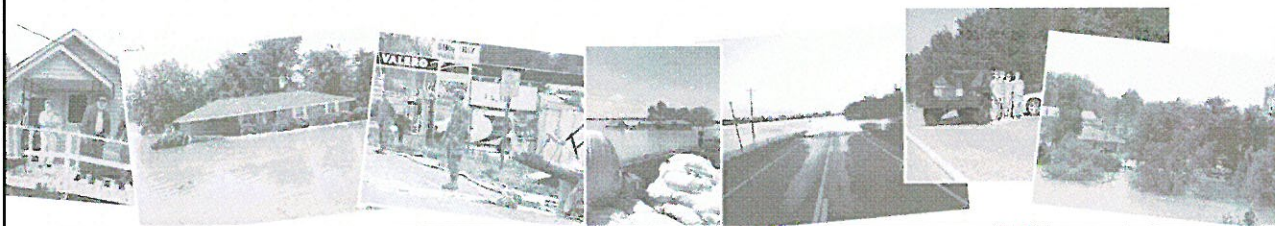


★ NATIONAL GUARD ★
COUNTER DRUG
 PROGRAM



Weapons of Mass Destruction / Civil Support Team (WMD/CST)

DOMS MISSION AREAS



61st WMD / CST Key Characteristics



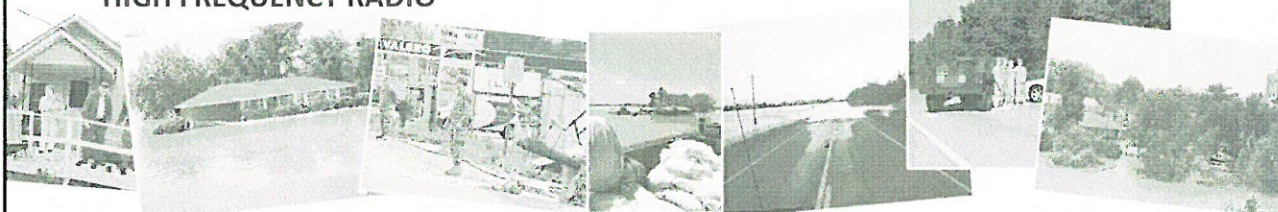
- Able to provide immediate on-scene situational awareness to All-Hazard event
- Operates under control of the Governor
- WMD-CSTs are certified by the SECDEF
- Operate only in US and Territories
- 22 Full-time Guardsmen
- 80% Commercial Off The Shelf (COTS) equipment
- All personnel Hazardous Materials Technician certified
- Total of 57 Teams, 1 perState and Territory (CA, NY, FL 2 ea)
- Unified Command Suite (UCS); self-contained, stand-alone, air-transportable, mobile communications system to facilitate reach-back
- Analytical Laboratory System (ALS); mobile, analytical lab that conducts field laboratory analysis to detect and characterize unknown CBRN samples



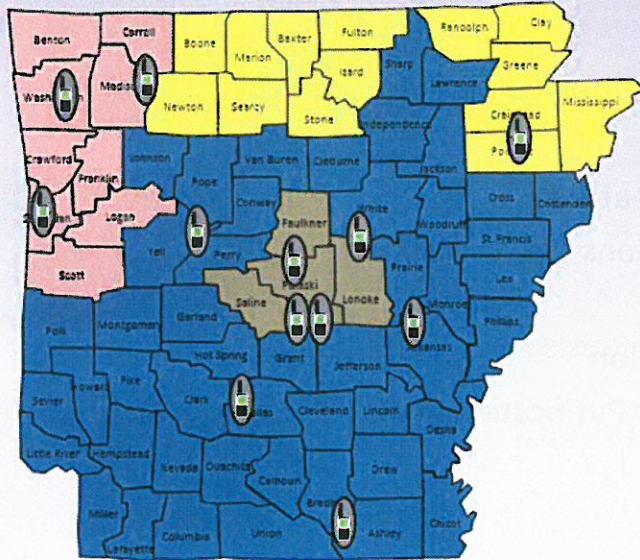


Command, Control and Communication

AWINS
HIGH FREQUENCY RADIO



Liaison Officer / AWINS Status



25-Jan-16

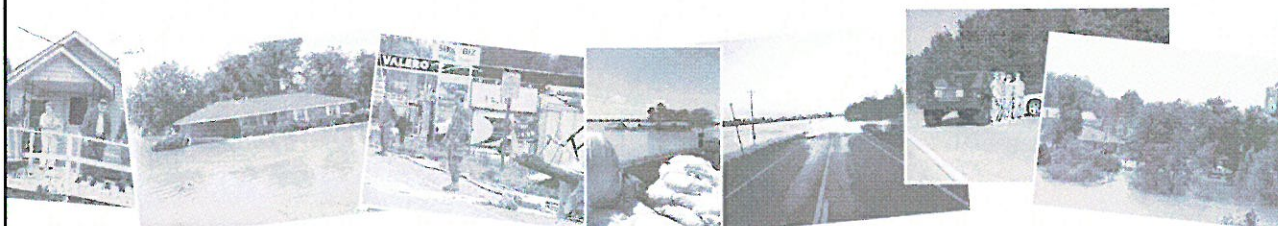
(State LNO Comms Status)

Soldier Names	Unit	Status
OPT Spaight, Michael	Primary 1-42d FAG	OK
SFC Martin, Daniel	Alternate 1-42d FAG	OK
OPT Schaefer, James	Primary 1-42d FAG	OK
SFC Johnson, Robert	Alternate 1-42d FAG	OK
Sgt Master, Gile	Primary 1-42d FAG	OK
SFC Howard, Jason	Alternate 1-42d FAG	OK
MSgt Miller, Scott	Primary 24th TC	OK
Sgt Owens, Ryan	Alternate 24th TC	OK
OPT Scarborough, Eric	Primary 87th	OK
SFC Whelan, Greg	Alternate 87th	OK
MSgt Williams, James	Primary 20th SSG HQ	OK
MSG Phillips, William	Alternate 20th SSG HQ	OK
MSG Harris, Stewarts	Primary 20th SSG	OK
SFC Bergan, Jeffrey	Alternate 20th SSG	OK
OPT Montanier, James	Primary 1-20th FA	OK
MSgt Paul, Brian	Alternate 1-20th FA	OK
MSG Crowder, Michael	Primary 1-18d IN	OK
OPT Marshall, Troy	Alternate 1-18d IN	OK
OPT Morgan, Joe	Primary 2-18d IN	OK
SFC Ellis, Michael	Alternate 2-18d IN	OK
SFC Shaver, Kirk	Primary 20th SSG	OK
SFC Jew, Jake	Alternate 20th SSG	OK
MSG Lynn, Michael	Primary 1-181 CAV	OK
OPT Heman, Brian	Alternate 1-181 CAV	OK
Sgt Martin, Sam	Primary 16th	OK
MSgt Cookson, Tony	Alternate 16th	OK
MSG Cotten, William	Primary 16th	OK
MSG Brodus, Ashley	Alternate 16th	OK



MISSION READY PACKAGES

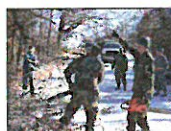
MRPs




Standard DOMOPS MRPs




- County Liaison Officer (LNO) Teams
- Winter-Storm Truck Teams
- Route Opening / Debris Clearance
- Mobile Emergency Operations Center (MEOC)
- Multi-Purpose Support
- Emergency Power Generation
- Water Distribution / Water Purification (ROWPU)










Specialized DOMOPS MRPs




- Power Generation Team
- Urban Search and Rescue
- HAZMAT Detection Teams
- Disaster Relief Bed-down System
- National Guard Response Force and Quick Reaction Force





Winter Storm Support Truck Team




Provide on-the-road assistance to the Arkansas State Police during severe winter weather events. Multiple two vehicle teams can be requested. Each MACOM and Wing will assign one (4) trucks team per assigned State Police Headquarters to provide 24hr operational support.

4 pax & 2 vehicles per 12 hr shift

PERSONNEL	
National Guardsman	8
TOTAL PER TEAM	8

Can be in route within 8 hrs for a winter storm event (weather dependent).



EQUIPMENT	
HMMWV	4
SINGARS	2
AWIN Radio	1

Cost based on the current Army Financial Management Army 2015 Ground Rates & an average of the 2016 Army Pay Charts

\$ 1,620 / day + Fuel

All cost are for planning purposes only. Actual cost may vary.



Route Clearance Team – Medium (RCM)



Can clear large debris/soil deposits on roadways and other public routes. Package provides manning trained to operate prime-mover and skid steer (with bucket, fork, and sweeper attachments).

Can be in route within 4 hrs for a tornado like event and up to 8 hrs for a winter storm event (weather dependent).



PERSONNEL	
Licensed Equipment Operator	1
Equipment Ground Guide	1
Chainsaw Operator	2
General Labor	2
TOTAL PER TEAM	6

EQUIPMENT	
HMMWV	1
LMTV* w/ Trailer	1
Skid Steer (claw/sweep/bucket)	1
Chainsaws with PPE	2

* Or Air Force Dump Truck
FEMA Rates were used for Skid Steer & Trailer

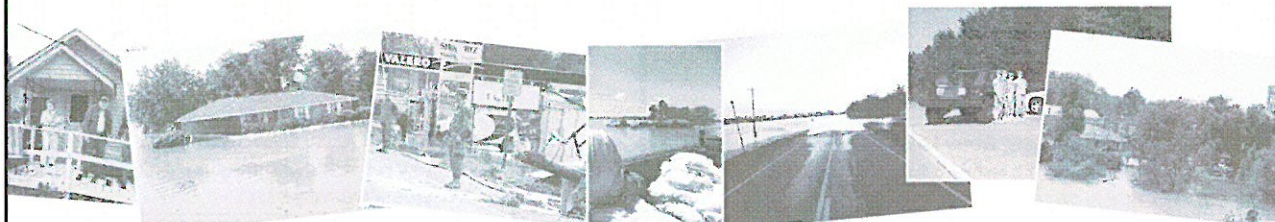
Cost based on the current Army Financial Management Army 2015 Ground Rates & FEMA Rates & an average of the 2016 Army Pay Charts

\$ 2600.00 / day + Fuel

All cost are for planning purposes only. Actual cost may vary. FEMA associated cost are hourly rate for 12 hours



MISSION HISTORY

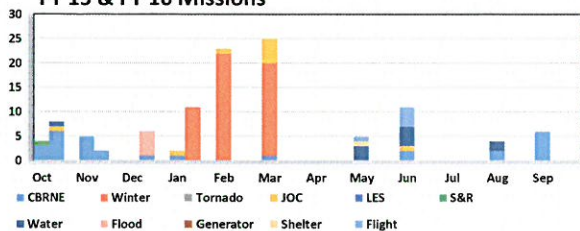




FY15 and 16 State Active Duty Missions



FY 15 & FY 16 Missions



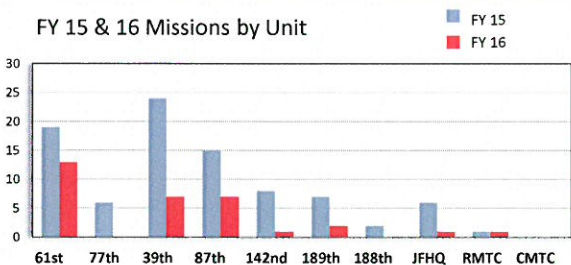
Payroll & Vendor Mission Costs

Missions Total – Payroll including (JOC)	\$51,208.22
Missions Total – Vendors	\$0
Missions Total – Equipment	\$0
TOTAL COST	\$0

**** 54 service member payroll pending for FY 16 missions.**

**** 312 personnel on SAD during FY-15. Total \$255,291.44**

FY 15 & 16 Missions by Unit



Issues

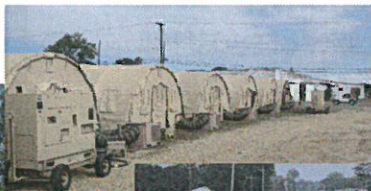
Availability of SAD employees to cover JOC extended hours



Flood Response, 2011



- Health and Welfare /Evacuation Checks along White River
- Sand-Boil mitigation in Desha and Chicot County
- Levy monitoring





Vilonia Tornado, 2011 & 2014



- Anti-looting security-patrols
- Water distribution
- Field Litter Ambulances (FLA)
- Entry-control and traffic-control
- Mobil Emergency Operations Center
- Interagency communications
- Route Opening / Debris Clearance



Winter Storm Octavia, Feb 2015



- Multiple Truck and Ambulance Teams support Mission
- Mission entailed patrolling highways, locating and assisting stranded motorists
 - Family of 6 rescued in vicinity of Social Hill
 - Pregnant woman on I-30 guided to safety

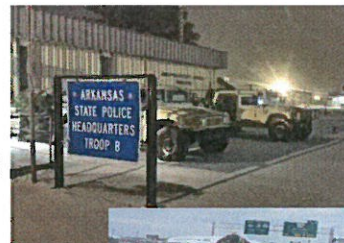




Winter Storm Jonas, Jan 2016



- Seven (7) Truck Team Mission support Arkansas State Police
- Mission entailed patrolling highways, locating and assisting stranded motorists
- *“Thanks so much for the help that we received from your guys; this freed us up to work accidents and not check on unattended vehicles.. I drove the troop area and saw the yellow tape on all abandon vehicles; this was great! Just want you to know that they are very much appreciated. Pass on my many thanks to them.”*
 - Captain Alex U. Finger, Troop-A Commander





Summary






- Mission
- Task Organization
- National Guard Support to Civil Authorities (NGSCA)
 - NGSCA Principles
 - Request for Assistance Process
 - Funding
- DOMS Mission Areas
 - Joint Operations Center
 - Future Operations
 - Incident Awareness & Assessment
 - Anti-Terrorism / Force Protection
 - Counter Drug Operations
 - Civil Support Team
- Command Control and Communication
- Mission Ready Packages
- Mission History



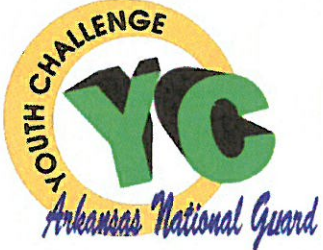


Questions

EOC / JOC – 501-212-5471

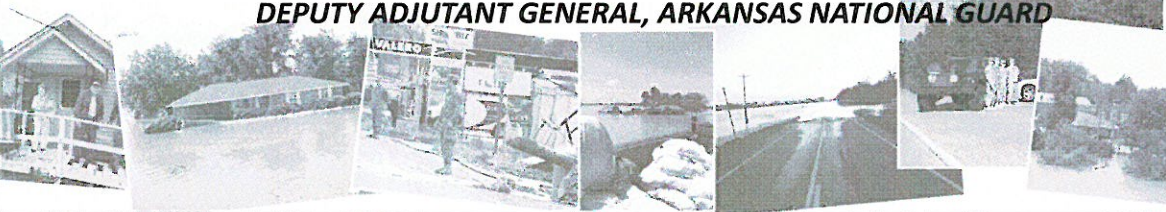


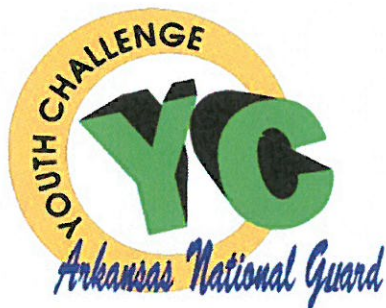
YOUTH PROGRAMS



BRIGADIER GENERAL KEITH A. KLEMMER

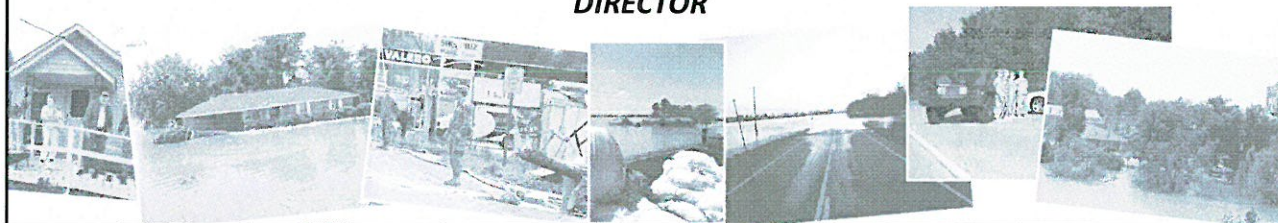
DEPUTY ADJUTANT GENERAL, ARKANSAS NATIONAL GUARD





MRS. DEBORAH L. TRAMMELL

DIRECTOR



MISSION STATEMENT

The Arkansas National Guard Youth Challenge Program will intervene and reclaim the life of qualified high school drop-outs by providing the opportunity to learn the values, skills, and self-discipline necessary to become productive citizens through education, leadership, training, and mentoring of cadets in a controlled, quasi-military system spanning both the residential and post-residential phases and beyond.



EIGHT CORE COMPONENTS

- Academic Excellence
- Responsible Citizenship
- Life Coping Skills
- Service to Community
- Job Skills
- Leadership/Followership
- Health & Hygiene
- Physical Fitness



ELIGIBILITY

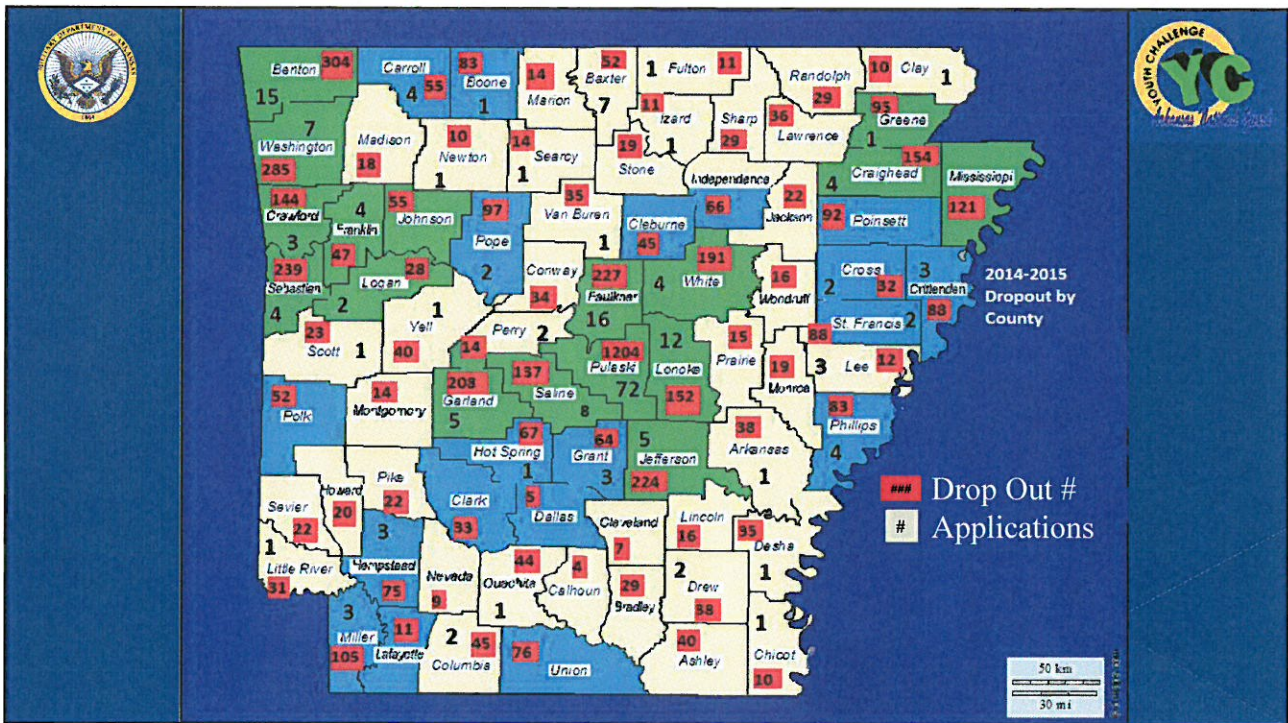
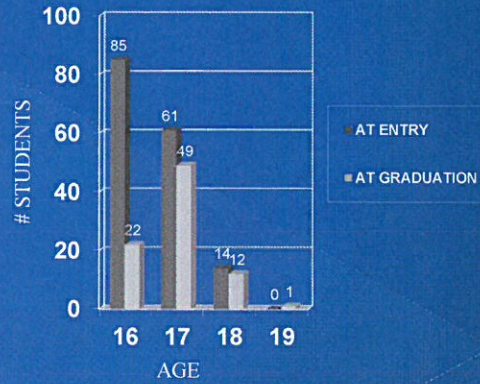
- 16-18 Years Old
- Male and Female
- High School Drop-outs
- Drug Free
- No criminal activity resulting in a felony
- Mentally and physically capable of completing the program

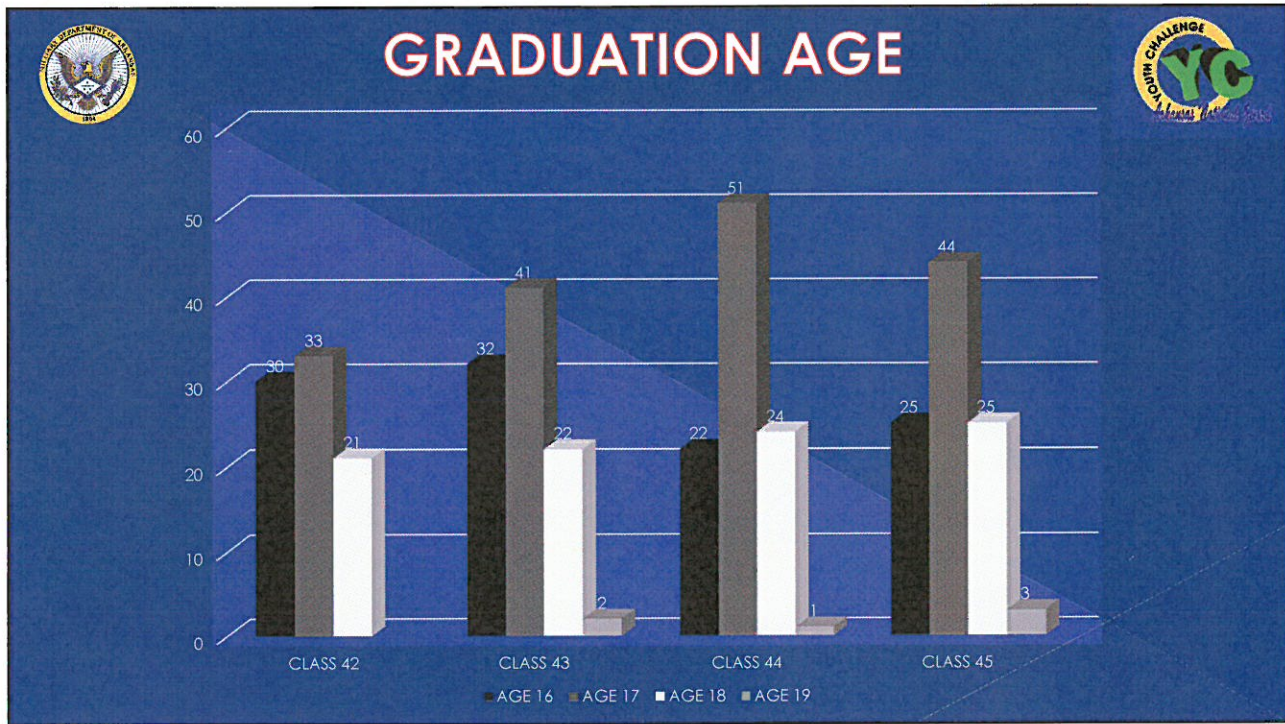
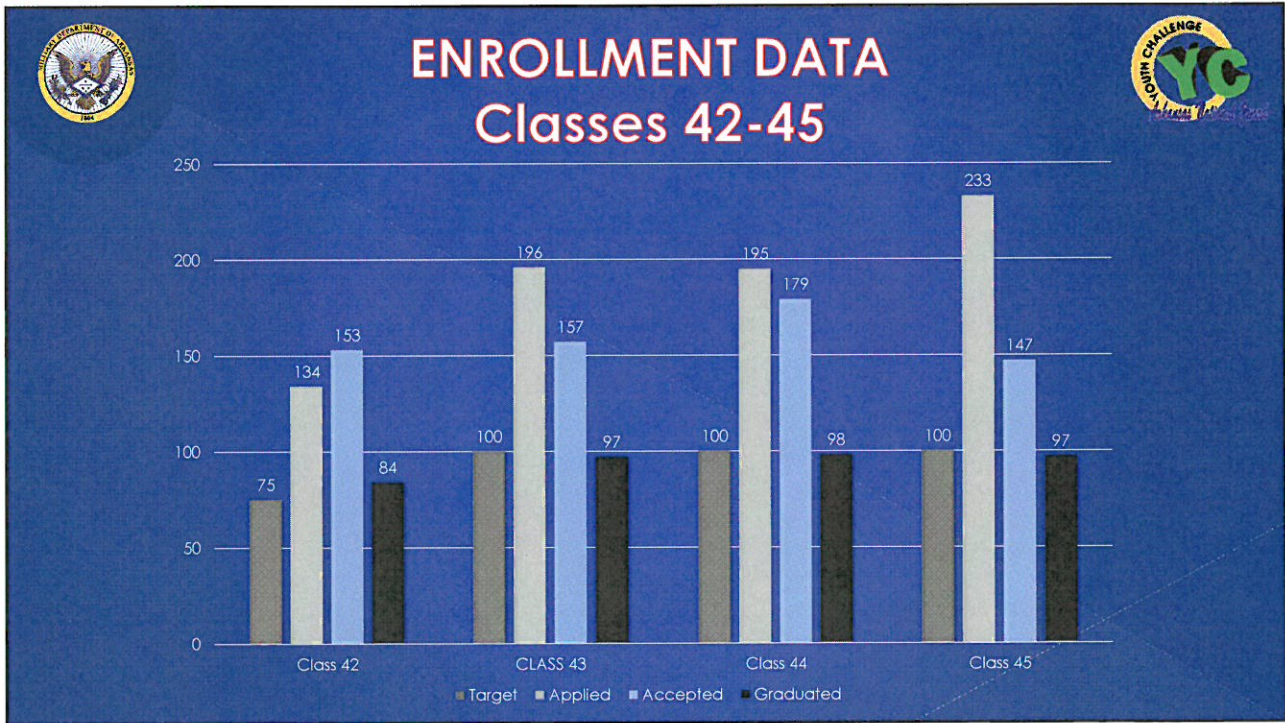
- Will not accept felons

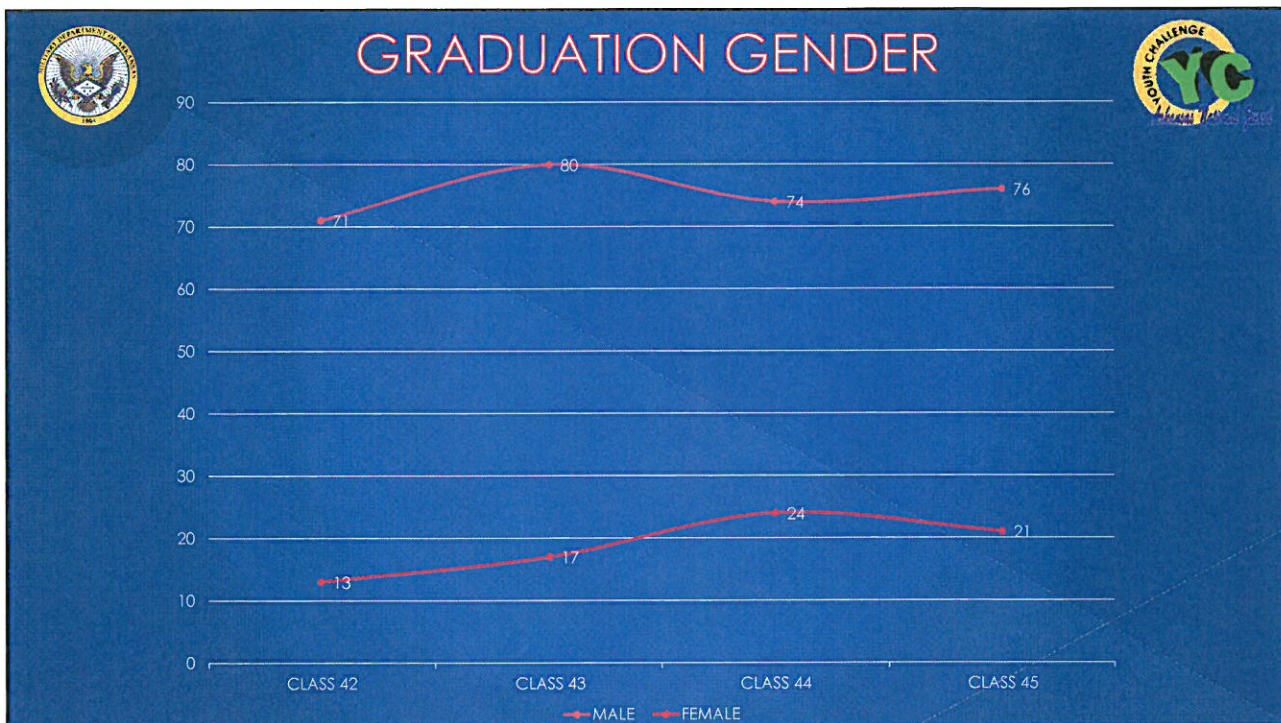


PROGRAM – FOCUS AREA

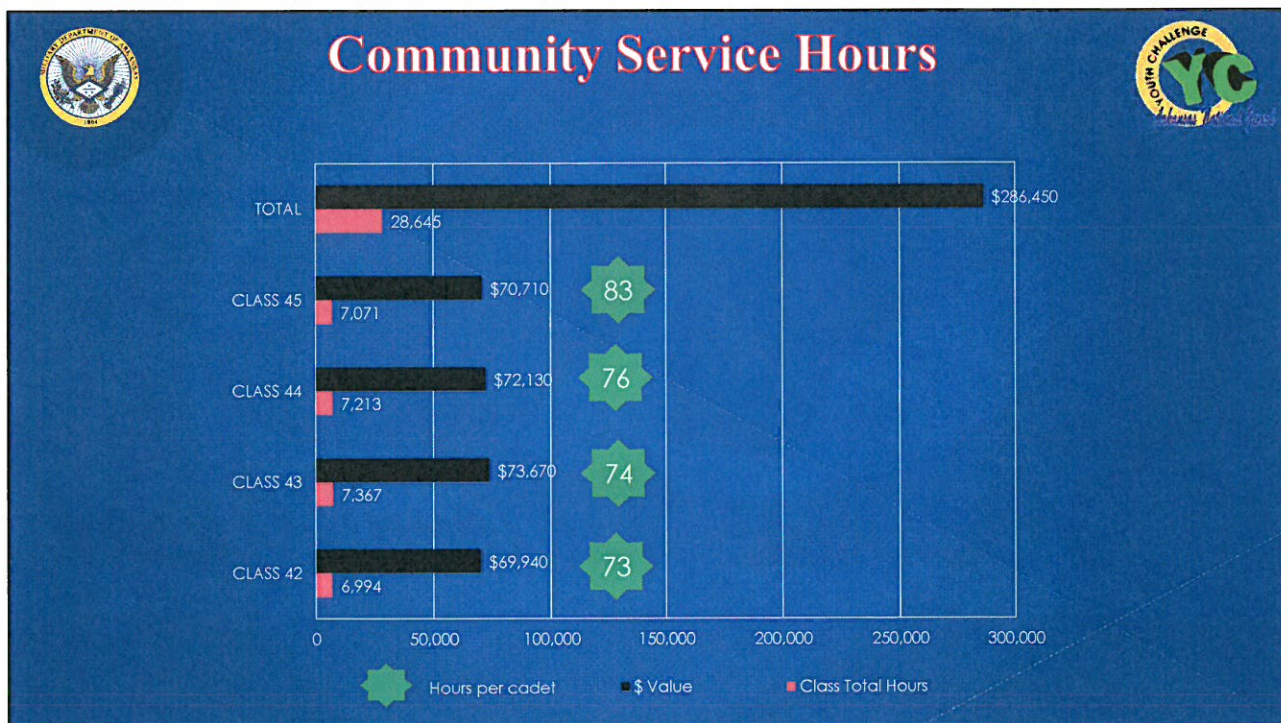
- A multi-phase intervention program
- Targets 16 to 18 year old dropouts
- The average age at entry is 16
- The average age at graduation is 17

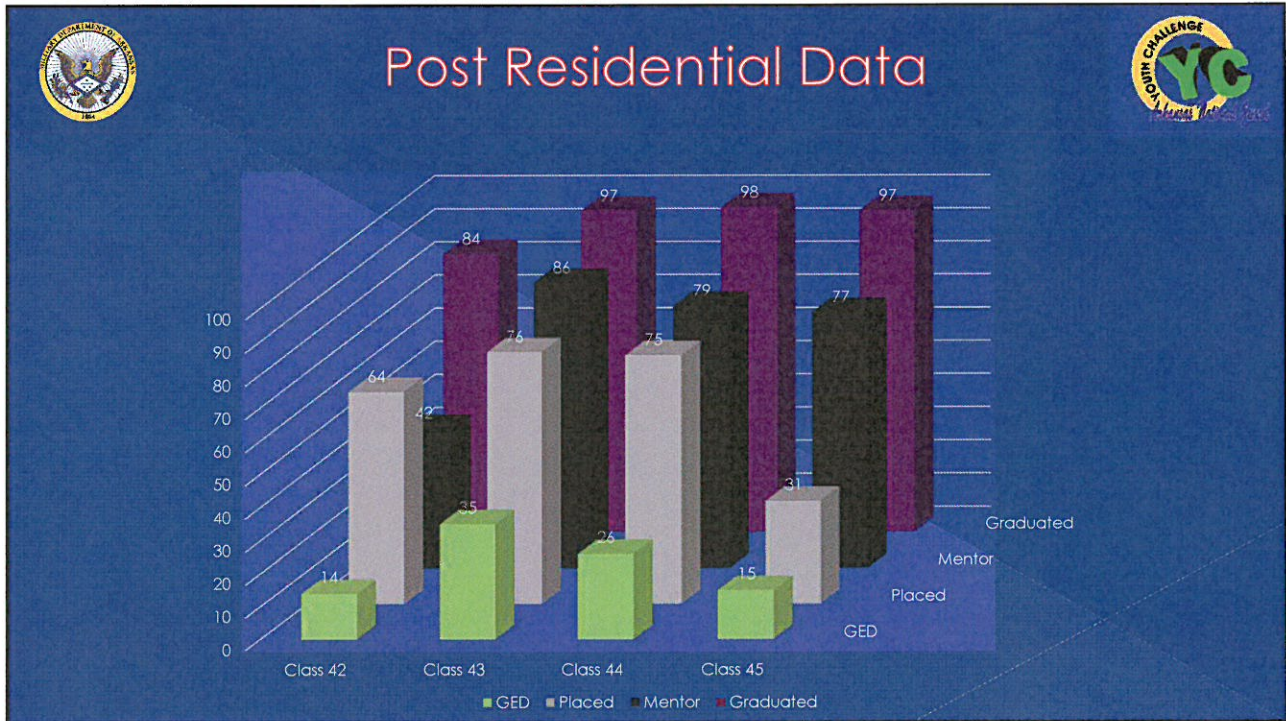






*2 male barracks - 60 capacity each
1 female barrack - 50 capacity*





> Mentor Program fellow 12 months after grad. from the program. Mentors are volunteers.

Arkansas National Guard
Questions?