



Division of Children and Family Services



Cecile Blucker, Director

P.O. Box 1437, Slot S560 · Little Rock, AR 72203-1437
501-682-8772 · Fax: 501-682-6968 · TDD: 501-682-1442

January 5, 2016

The Honorable George B. McGill, Chair
House Committee on Aging, Children,
and Youth, Legislative and Military Affairs
Arkansas Legislative Council
315 State Capitol Building
Little Rock, Arkansas 72201

The Honorable Stephanie Flowers, Chair
Senate Committee on Children
and Youth
Arkansas Legislative Council
315 State Capitol Building
Little Rock, Arkansas 72201

Dear Representative McGill and Senator Flowers:

Act 1222 of 1995 mandates a quarterly evaluation of the performance of the Division of Children and Family Services. Attached is the Quarterly Performance Report (QPR) produced in compliance with that mandate. The report covers the 1st quarter of SFY 2016 (July 2015 to September 2015).

Forty copies of the report along with an electronic version are attached for your convenience.

Should you have questions regarding the enclosed materials, please feel free to contact me.

Sincerely,

A handwritten signature in blue ink that reads "Cecile Blucker".

Cecile Blucker
Director

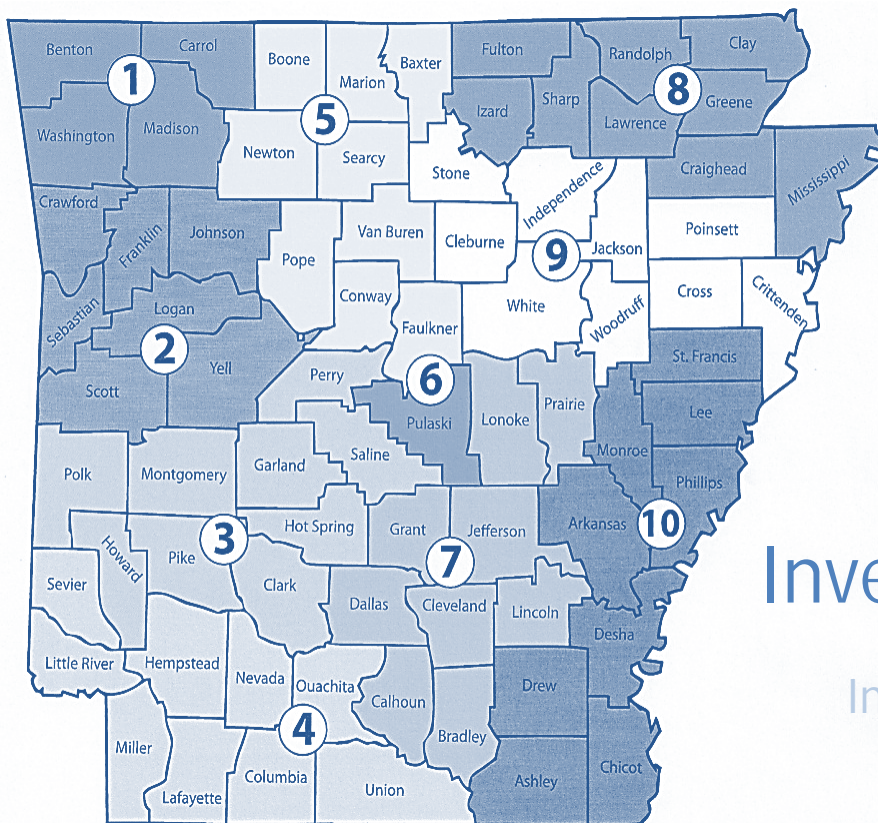
CB: fs

cc: John Selig, Director, Department of Human Services

Attachments (40)

QUARTERLY PERFORMANCE REPORT 1st QUARTER SFY 2016

July 1, 2015 – September 30, 2015



Investigations

SUPPORTIVE SERVICES

In-home Protective Services

ADOPTIONS

Differential Response

Foster Care

Produced for
Arkansas Department of Human Services
Division of Children and Family Services
by
Hornby Zeller Associates, Inc.

Table of Contents

Reports of Child Maltreatment	1
Volume and Description of Child Maltreatment Reports	1
Meeting Agency Policies	4
Benefits to Children and Families	6
In-Home Services	7
Volume and Description of Cases.....	7
Meeting Agency Policies.....	8
Benefits to Children and Families	9
Foster Care	10
Volume and Description of Cases.....	10
Meeting Agency Policies.....	13
Benefits to Children and Families	15
Adoption	16
Volume and Description of Cases.....	16
Meeting Agency Policies.....	17
Benefits to Children and Families	18
Resources	19
Caseworkers and Caseloads	19
Foster Homes	20
Appendices	23
<i>Appendix A: Breakdown of Child Maltreatment Reports</i> Received During the Quarter and Substantiation Rates of Maltreatment Investigations	23
<i>Appendix B: Summary of Reports Involving Child Fatality</i>	24
<i>Appendix C: Summary of Reports Involving Near Child Fatality</i>	27
<i>Appendix D: Summary of Reports Involving Fatalities of</i> Children in Foster Care Who Did Not Receive a Maltreatment Investigation	28
<i>Appendix E: Average Caseload by County</i>	29
<i>Appendix F: Foster Home Closure Reasons</i>	30
<i>Appendix G: Summary of Foster Care Maltreatment Reports</i>	32

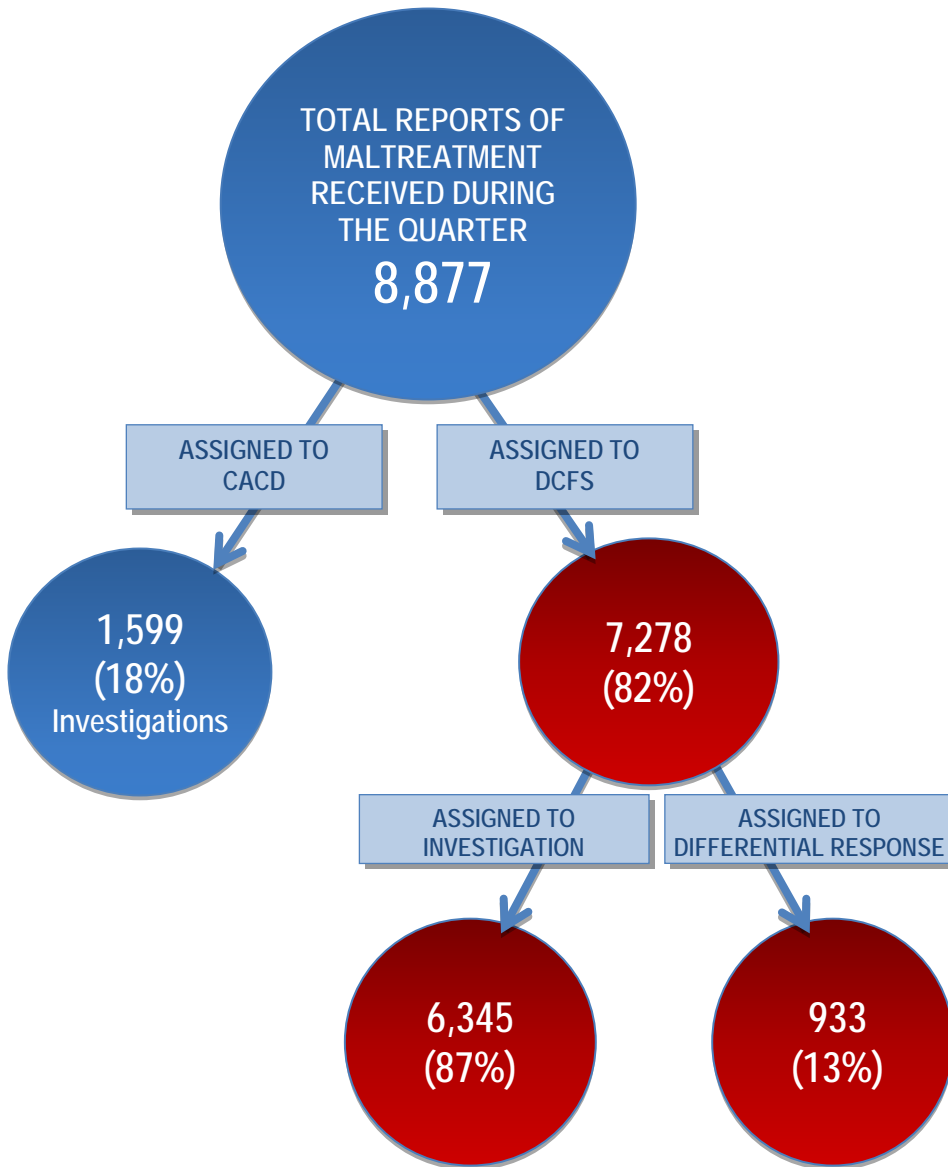
Reports of Child Maltreatment

Quick Facts

Volume and Description of Child Maltreatment Reports

Volume of Incoming Reports

Maltreatment Reports Received During
1st Quarter SFY 2016



Of the 8,877 reports of child maltreatment accepted by the Arkansas Child Abuse Hotline during the quarter, 82 percent were assigned to DCFS and 18 percent were assigned to the Crimes Against Children Division (CACD) of the Arkansas State Police, which is responsible for investigating the most serious allegations of maltreatment.

Of the reports assigned to DCFS, 87 percent were assigned for an investigation and 13 percent were handled through Differential Response (DR).

DR, which was implemented statewide in August 2013, allows the Division to respond to specific, low-risk maltreatment reports through a family assessment and provision of services rather than a traditional investigation.

The following types of allegations can qualify for DR:

- Inadequate Supervision if children are at least five
- Environmental Neglect if children are at least three
- Medical Neglect if children are at least thirteen
- Lock Out if children are at least ten
- Inadequate Food, Inadequate Shelter, Inadequate Clothing, and Educational Neglect with no age restrictions
- Certain allegations of abuse where the incident occurred at least one year prior to the report date

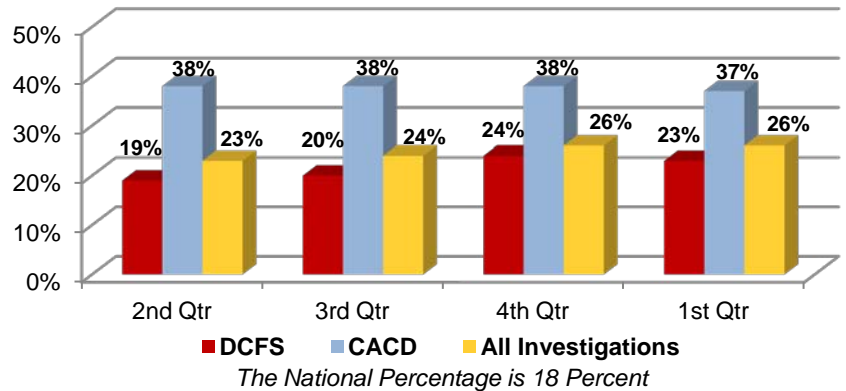
Quick Facts

Findings of Child Maltreatment Investigations

Twenty-three percent of the investigations assigned to DCFS during the quarter were found true, compared to 37 percent for CACD. The overall substantiation rate stood at 26 percent.

Appendix A provides further detail on the number of referrals accepted for investigation and those found true for the past four quarters.

Percentage Of Investigations Found True



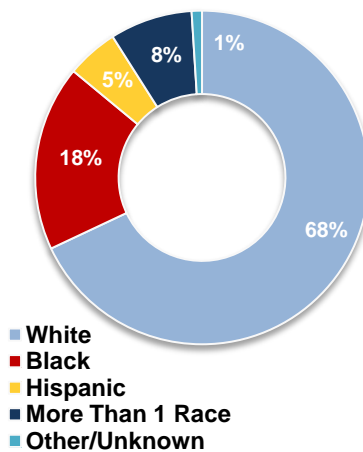
Characteristics of Children Involved in True Investigations

There were 2,456 victim children involved in the maltreatment investigations that were found true.

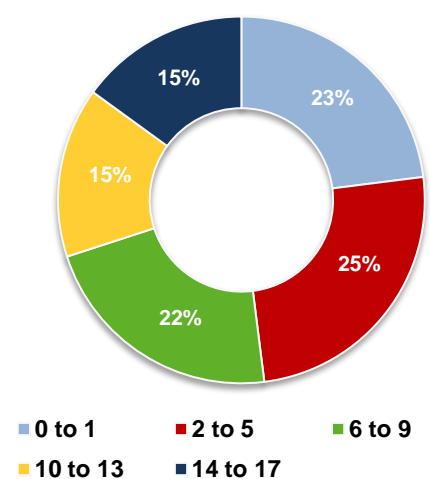
Of those children, 68 percent were white and 18 percent were black. Children under five years of age represented the largest group involved in true maltreatment investigations.

A majority of the victim children during the quarter (55 percent) were female.

Race/Ethnicity of Children in True Reports



Ages of Children in True Reports



Types of Allegations in True Investigations

The majority of the 2,456 victim children in true investigations were involved in allegations of neglect, followed by allegations of sexual abuse and physical abuse.

Percentage of Children in True Allegations of Maltreatment

	Number of Children Cited in True Allegation	Percentage of Children Cited in True Allegation
Neglect	1,624	66%
Sexual Abuse	529	22%
Physical Abuse	528	22%

A child may have more than one allegation.

Quick Facts

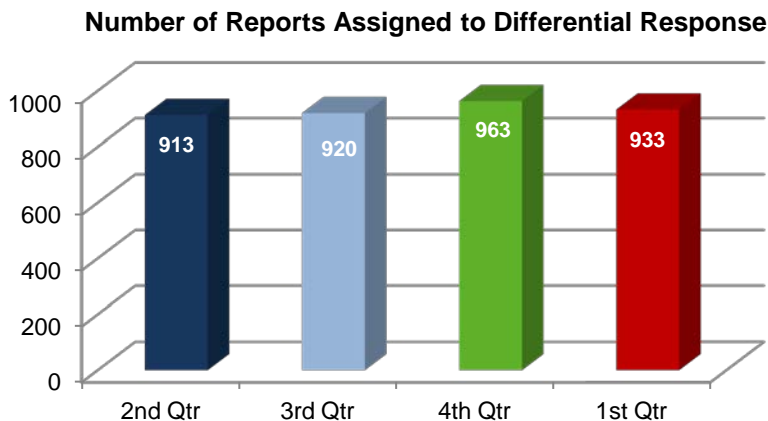
Reports Involving Fatalities or Near Fatalities

Findings of Maltreatment Reports Involving Fatalities or Near Fatalities		
Finding	Child Fatality	Near Child Fatality
True	10	0
Unsubstantiated	5	0
Pending	3	0

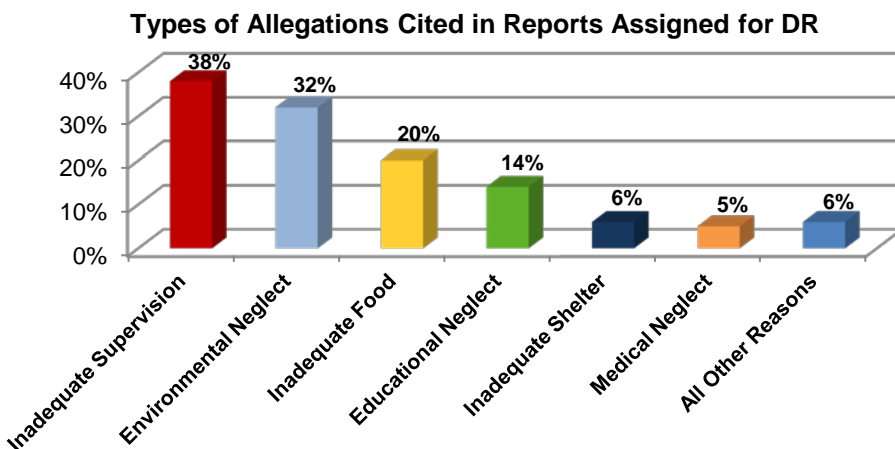
During the quarter, there were 18 maltreatment investigations of a child fatality and no investigations concerning a near child fatality. Of the 18 child fatality investigations, ten were found true, five were unsubstantiated, and three were still pending.

Appendix B and C include more details regarding the fatality and near fatality investigations.

Reports Assigned for Differential Response (DR)



The number of reports assigned to DR (933) during the quarter decreased by three percent compared to the previous quarter.



Allegations Cited in DR Reports

Inadequate Supervision and Environmental Neglect were the most commonly cited allegations in reports assigned to DR.

Quick Facts

Meeting Agency Policies

Timeliness of Initiating Investigations

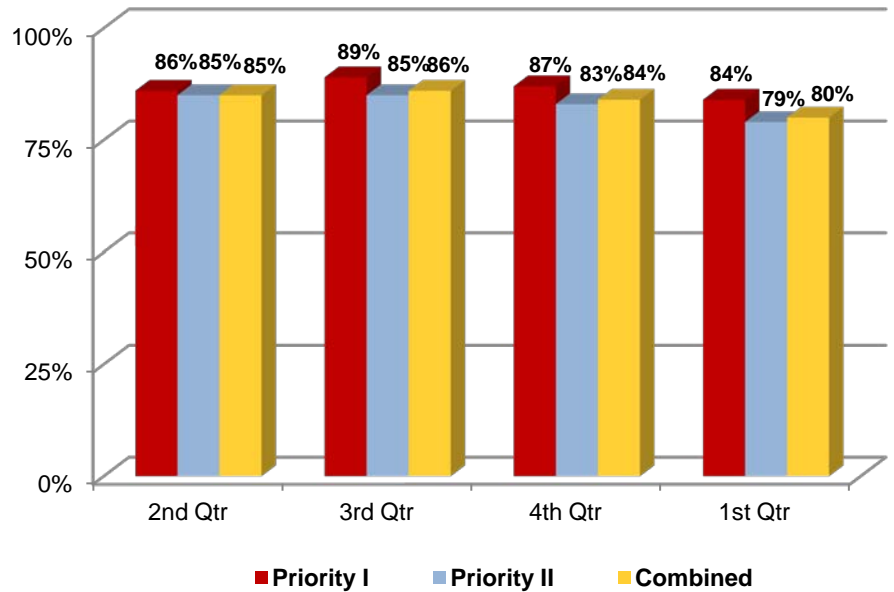
The law requires reports of maltreatment to be initiated within 24 hours of a Priority I report or within 72 hours of a Priority II report.

Priority I reports cite more severe allegations while Priority II reports cite comparatively less serious allegations.

Initiation occurs when all victim children are interviewed or observed (if too young for an interview) within the designated timeframes.

DCFS initiated 80 percent of its investigations on time during the first quarter, four percentage points lower than the previous quarter.

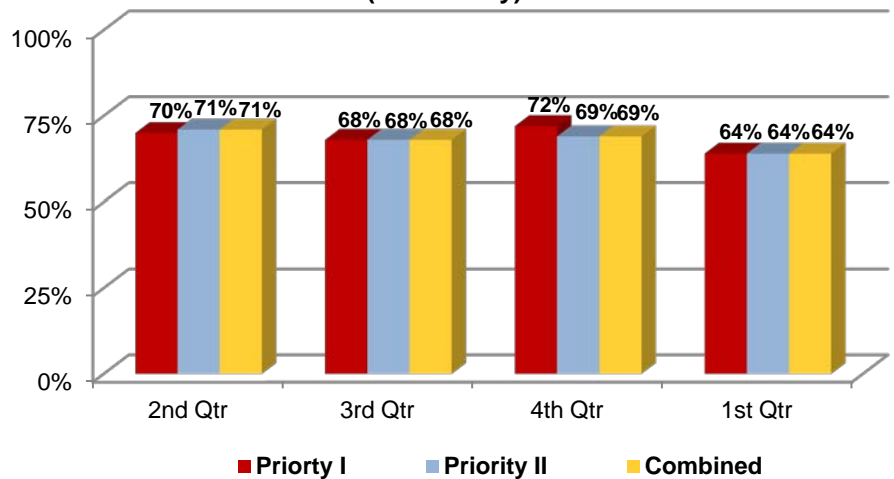
Timely Initiations of Child Maltreatment Assessments (DCFS Only)



Timeliness of Completing Investigations

DCFS completed 64 percent of its investigations on time (within 45 days of receipt of the report) during the quarter, a decrease from the previous quarter.

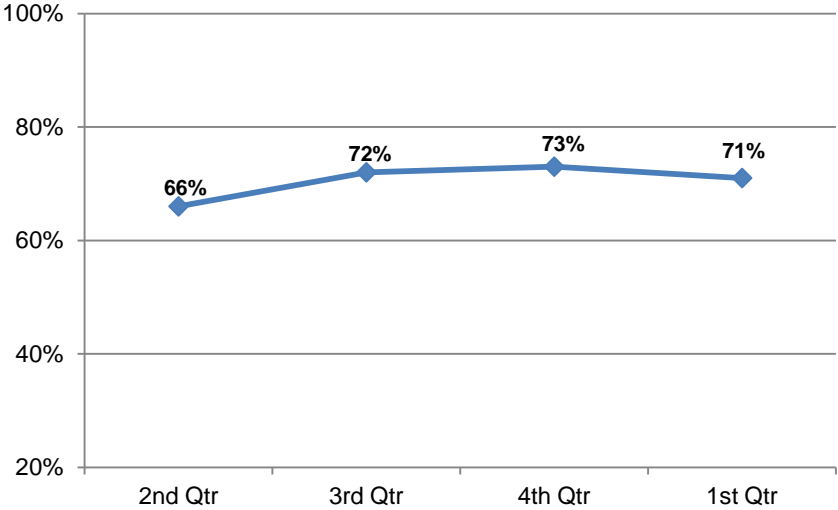
Timely Completion of DCFS Assessments (DCFS Only)



Quick Facts

Timeliness of Initiating Reports Assigned to DR

Timeliness of DR Initiations

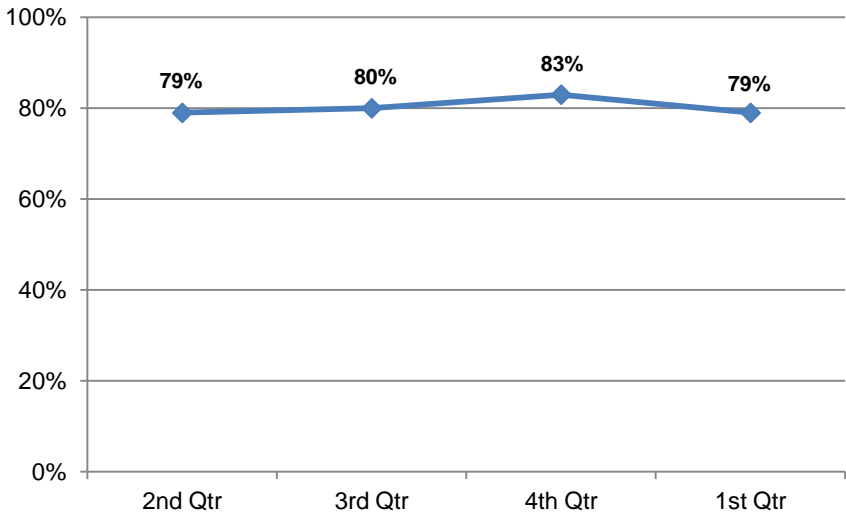


DR referrals must be initiated within 72 hours of receipt of the report.

DCFS initiated 71 percent of its DR reports on time during the quarter.

Timeliness of Completing Reports Assigned to DR

Timeliness of DR Closures (Within 30 Days)



Reports assigned to DR must be closed within 30 days of receipt of the report. In certain instances when the families' needs necessitate longer involvement, two 15-day extensions can be granted, for a total of 60 days.

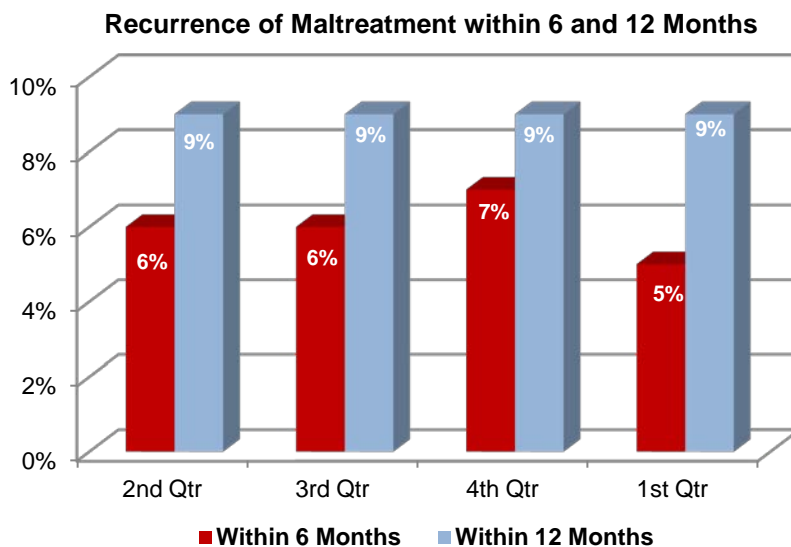
The Agency closed 79 percent of its DR reports on time, taking into account reports in which extensions were granted.

Quick Facts

Benefits to Children and Families

Preventing the Recurrence of Maltreatment

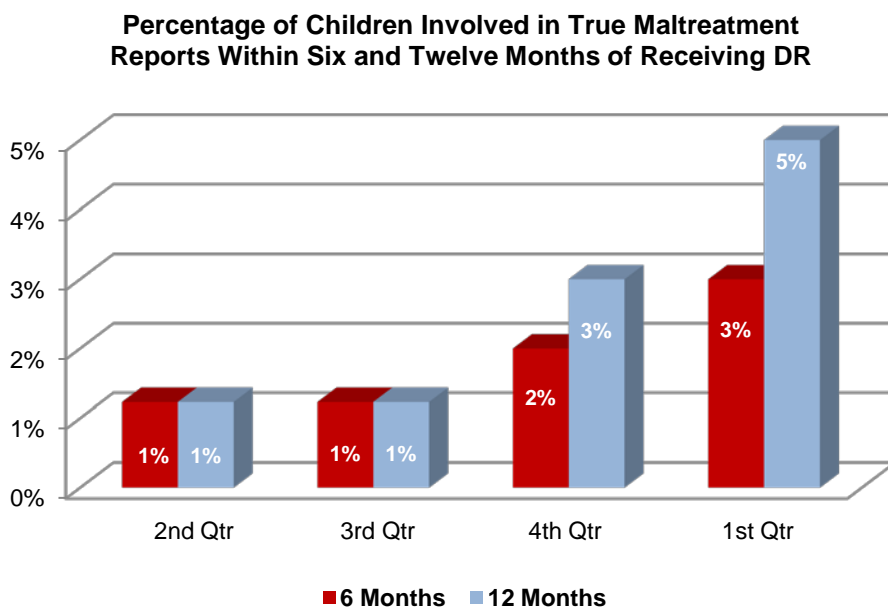
Nine percent of the victim children involved in true investigations experienced a recurrence of maltreatment within 12 months. Five percent experienced a recurrence of maltreatment within six months.



The National Standard for absence of recurrence within six months is 5.4 percent or less

Absence of Recurrence Among Families who Received DR

Five percent of the children who began receiving DR services were involved in a true investigation of child maltreatment within 12 months, and three percent were involved within six months.

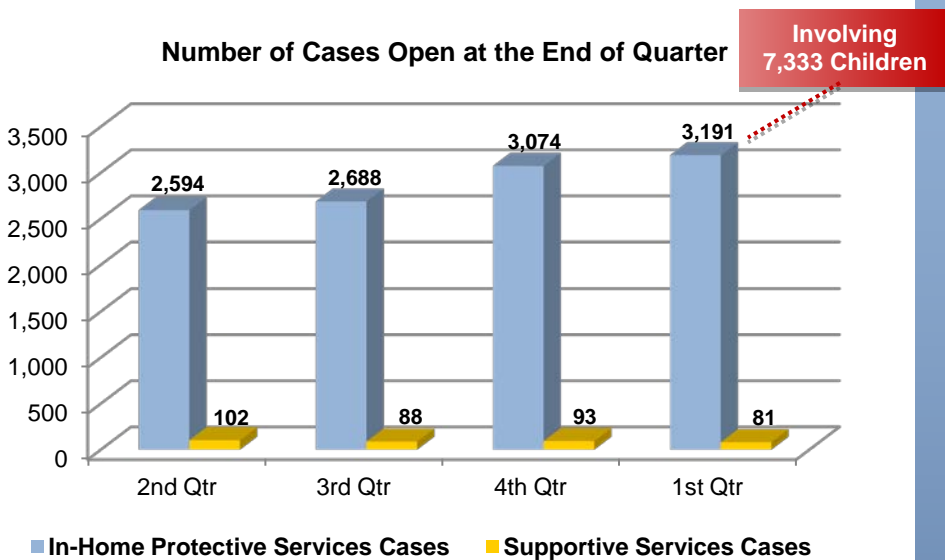


In-Home Services

Quick Facts

Volume and Description of Cases

Volume of Cases

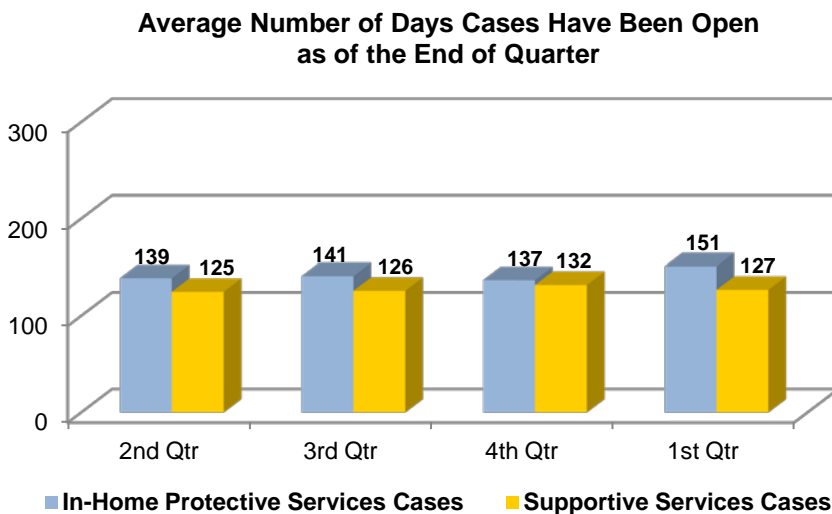


In most instances, DCFS offers in-home services through a protective services case, which is opened when a true maltreatment report or court order necessitates DCFS' involvement with a family but there is not an immediate threat to any child's safety in the home.

The number of in-home protective services cases increased by four percent during the quarter. At the end of the quarter, there were 3,191 in-home cases open across the state, involving 7,333 children.

The Division also offers some in-home supportive services to families on a voluntary basis. DCFS was responsible for 81 supportive services cases at the end of the quarter.

Length of Time Cases Have Been Open



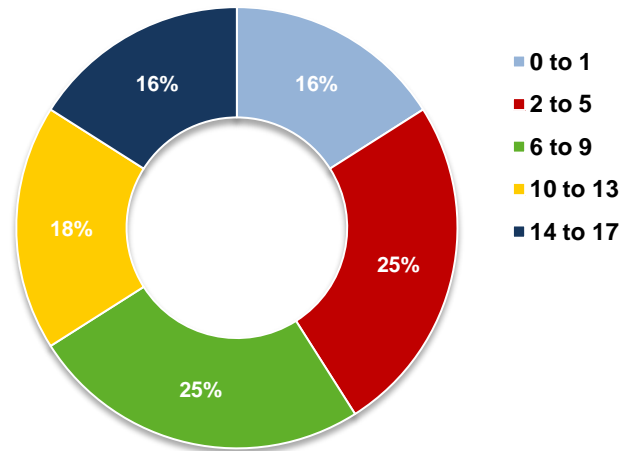
The average length of time in-home cases were open at the end of the quarter was about five months (151 days). Supportive services cases were open on average just over four months (127 days).

Quick Facts

Ages of Children in In-Home Cases

Children ages two to five and six to nine make up the largest group of children involved in in-home cases at the end of the quarter.

Ages of Children in In-Home Cases

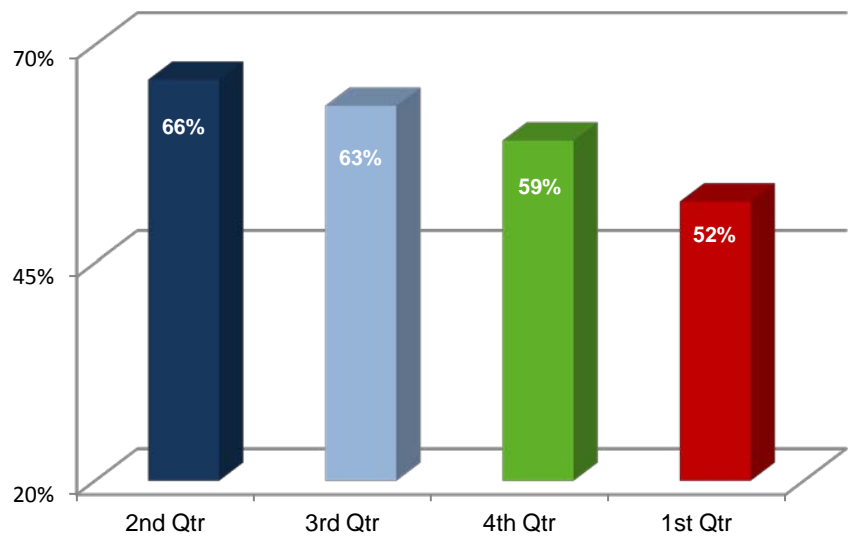


Meeting Agency Policies

Monthly Visits to In-Home Cases

On average, 52 percent of the in-home cases received a monthly face-to-face visit from a caseworker during the quarter.

Required Monthly Visits to In-Home Cases

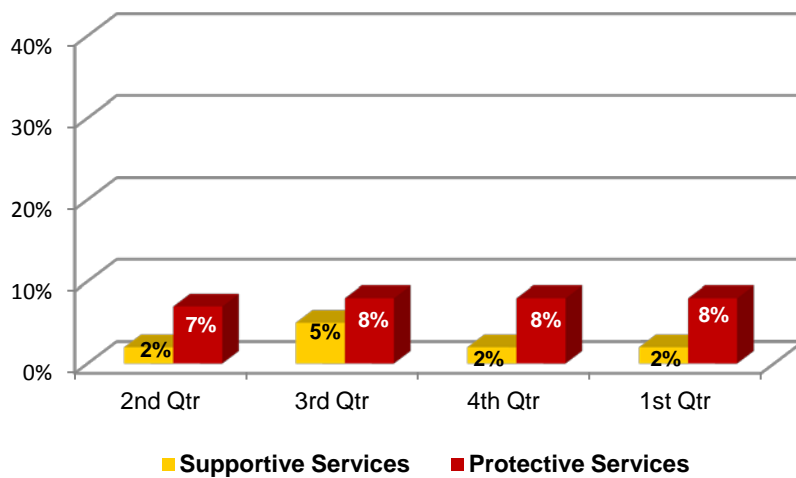


Quick Facts

Benefits to Children and Families

Victimization Rate Among Children Who Received Protective and Supportive Services

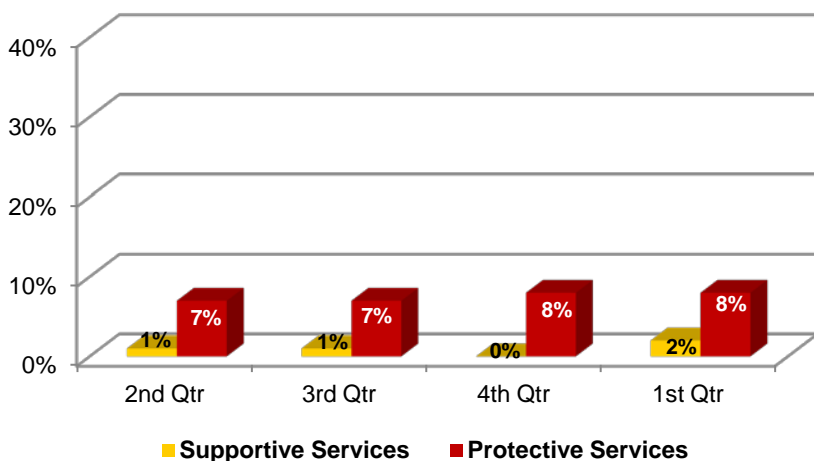
Percentage of Children Receiving Supportive and Protective Services who were Abused or Neglected within One Year of the Initiation of Service



Of the children who began receiving supportive services during the first quarter one year ago, two percent experienced a true report of maltreatment within one year. During that same time frame, eight percent of the children who began receiving in-home protective services were involved in a true report within one year (92 percent were not).

Rate of Entry Into Foster Care Among Children Who Received Protective and Supportive Services

Percentage of Children Receiving Supportive or Protective Services who Entered Foster Care within One Year of the Initiation of Service



Of the children who began receiving supportive services during the first quarter one year ago, two percent entered foster care within one year of the initiation of those services. Meanwhile, eight percent of children who began receiving protective services during the same timeframe entered care within one year.

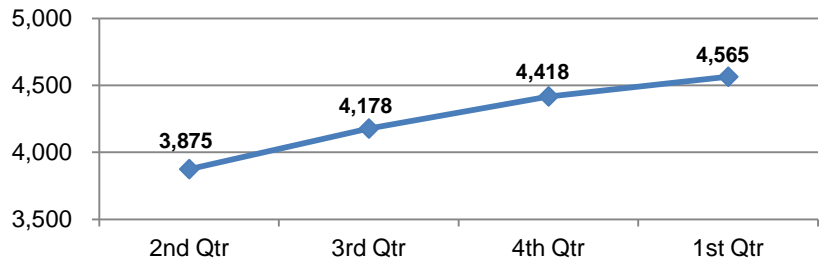
These services prevent the vast majority of the children from being re-victimized or entering foster care within one year.

Volume and Description of Cases

Number of Children in Foster Care

There were 4,565 children in foster care at the end of the first quarter of SFY 2016. This signified a three percent increase from the previous quarter.

Number of Children in Foster Care at End of the Quarter

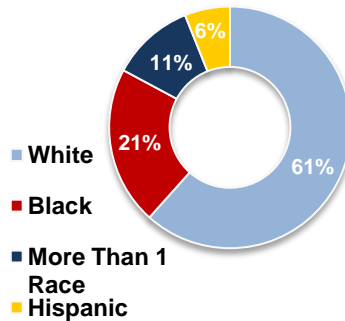


Characteristics of Children in Foster Care

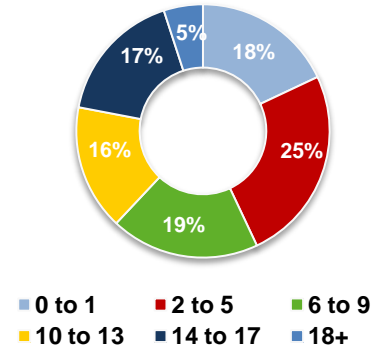
Children two to five years of age (25 percent) represented the largest group of children in care. Sixty-one percent of those in foster care were white and 21 percent were black.

Of the children in foster care at the end of the quarter, 51 percent were male and 49 percent were female.

Race/Ethnicity of Children in Care at the End of Quarter



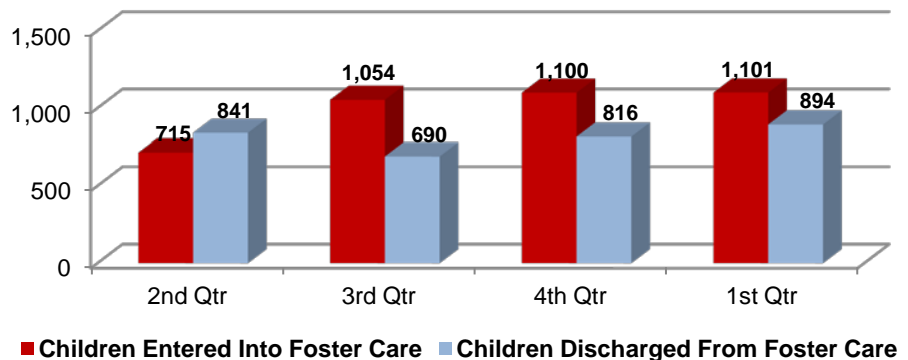
Ages of Children in Foster Care at the End of the Quarter



Admissions Into and Discharges From Foster Care

During the first quarter of SFY 2016, more children entered foster care than discharged.

Number of Admissions Into and Discharges From Foster Care During Quarter



Quick Facts

Reasons for Children's Entry Into Foster Care

Reasons for Children's Entry Into Foster Care 1st Quarter SFY 2016

Placement Reason	Number of Entries	Total
Neglect	591	54%
Substance Abuse	510 ¹	46%
Parent Incarceration	264	24%
Physical Abuse	127	12%
Inadequate Housing	87	8%
Sexual Abuse	64	6%
Caretaker Illness	59	5%
Child's Behavior	38	3%
Abandonment	23	2%
Other	20	2%

A child may have more than one reason for entry.

Neglect and substance abuse were the most prevalent reasons for children entering foster care.

Reasons for Children's Discharge From Foster Care

Reasons for Children's Discharge From Foster Care 1st Quarter SFY 2016

Placement Reason	Number of Discharges	Total
Reunification	383	43%
Relative Custody	274	31%
Adoption	177	20%
Child Aged Out	43	5%
Non-Relative Custody	13	1%
Custody Transfer	3	0%
Death of Child	1	0%

National data indicate that the three most prevalent reasons children leave care are reunification (51%), adoption (21%), and emancipation (10%).

Nearly three-quarters of the children who left foster care during the quarter were reunified either with their own family or that of a relative. Arkansas (93 percent) exceeds the national average of 80 percent of the children either going home, to a relative, or to an adoptive home.

¹ These 510 cases of substance abuse include 441 instances of parental drug abuse, 53 instances of parental alcohol abuse, and 16 cases of drug abuse by children.

Quick Facts

Length of Stay in Foster Care

Of the children in foster care at the end of the quarter, 43 percent had been in care longer than 12 months.

Placement of Children in Care

Forty-six percent of the children in foster care at the end of the quarter resided in foster family homes.

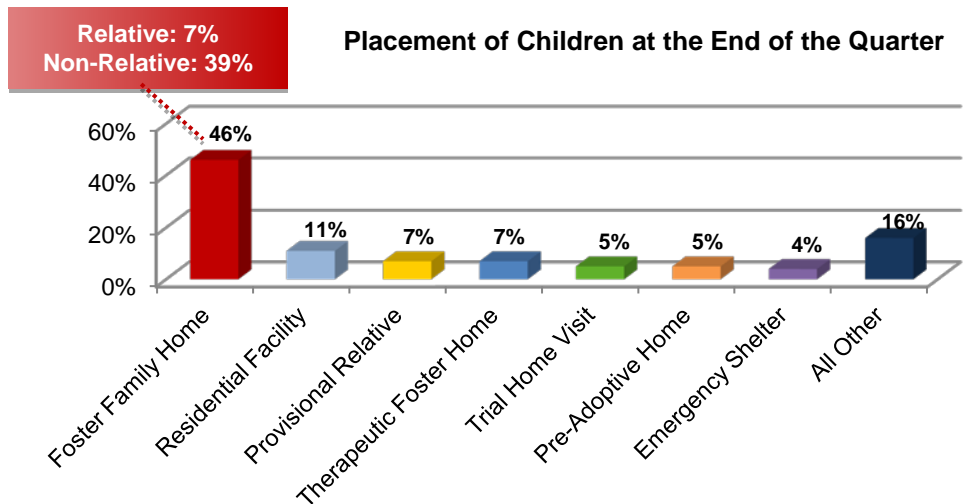
Overall, 70 percent of the children resided in a family-like setting (foster family home, therapeutic foster home, relative care, pre-adoptive home, trial home visit) at the end of the quarter.

Permanency Goals of Children in Care

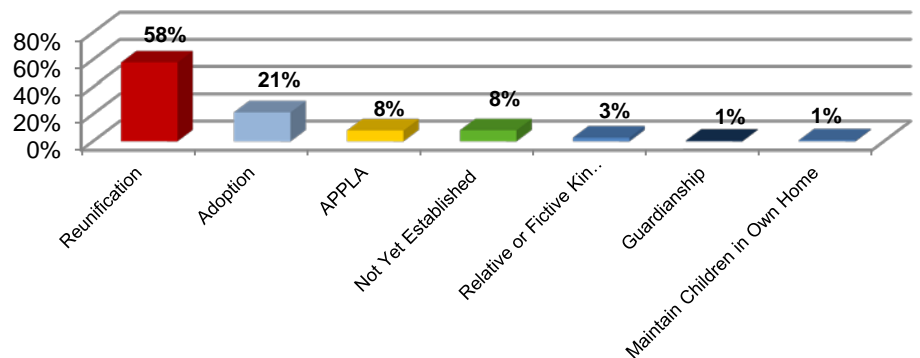
Well over half of the children in care at the end of the quarter had a permanency goal of reunification (return home), and 21 percent had a goal of adoption.

**Length of Stay in Foster Care for Children in Care
1st Quarter SFY 2016**

	Number	Percentage	National ²
Less than 30 days	380	8%	11%
30-90 Days	525	12%	15%
3-6 Months	762	17%	
6-12 Months	927	20%	20%
12-24 Months	1,026	22%	27%
24-36 Months	368	8%	13%
36+ Months	577	13%	14%
Total	4,565	100%	100%



Permanency Goals of Children in Foster Care at the End



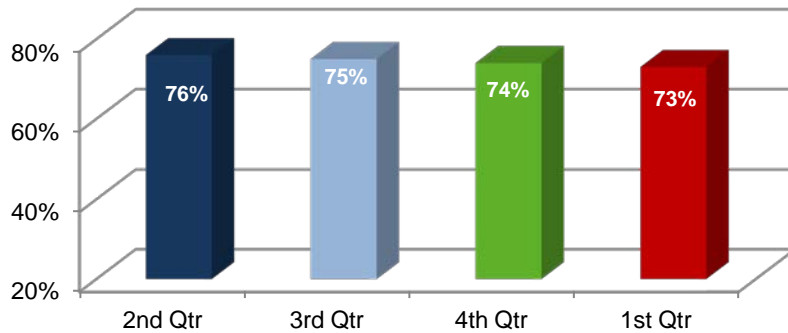
² Adoption and Foster Care Analysis and Reporting System (AFCARS) preliminary data submitted for children in foster care between 10/1/2012 and 9/30/2013 as of July 2014.

Quick Facts

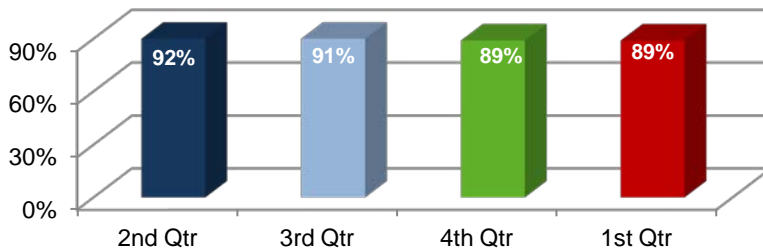
Meeting Agency Policies

Monthly Visits to Foster Children

Foster Children who Received Monthly Face-to-Face Visits by Caseworkers



Foster Children who Received Monthly Face-to-Face Visits by Any DCFS Staff

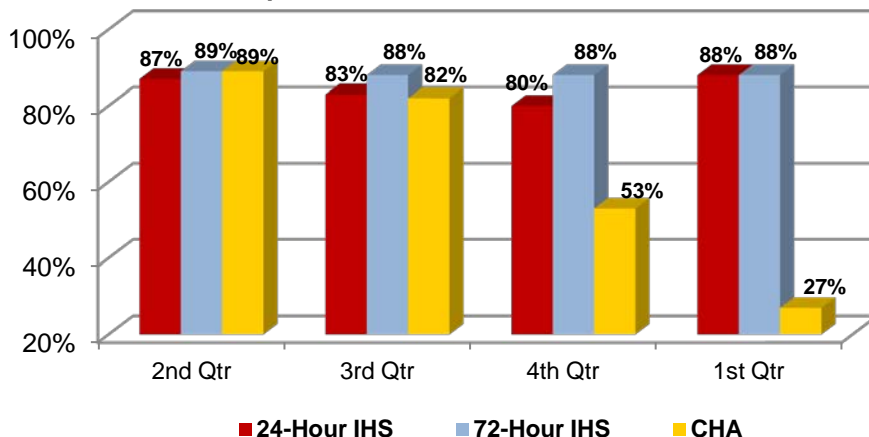


Seventy-three percent of the foster children statewide received a face-to-face monthly visit from a DCFS caseworker, on average, during the quarter. To ensure safety and well-being, best practice requires foster children to be visited at their placements by their caseworkers monthly (measured in this Chart).

Eighty-nine percent of foster children received a face-to-face monthly contact from *any* DCFS staff member, regardless of staff member's position, location of the visit, or the purpose.

Initial Health Screenings and Comprehensive Health Assessments

24-hour and 72-Hour Initial Health Screening and Comprehensive Health Assessments



When a child enters foster care due to an allegation of severe maltreatment, DCFS must conduct an Initial Health Screening (IHS) within 24 hours. All other incoming foster children require health screenings within 72 hours. These children must also receive a Comprehensive Health Assessment (CHA) within 60 days of entering foster care.

DCFS completed 88 percent of its required 24-hour IHSs, 88 percent of its 72-hour IHSs, and 27 percent of its CHAs on time.

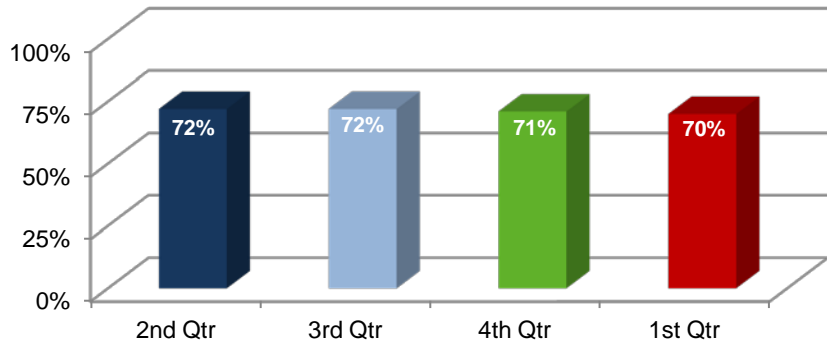
Quick Facts

Percentage of Siblings in Placement Who Are Placed Together

At the end of the quarter, 70 percent of the children with siblings in foster care were placed with at least one of their siblings. Of those, 50 percent were placed with all of their siblings.

These figures do not exclude children who were placed separately for valid reasons such as safety issues or court orders.

Siblings in Care who are placed Together

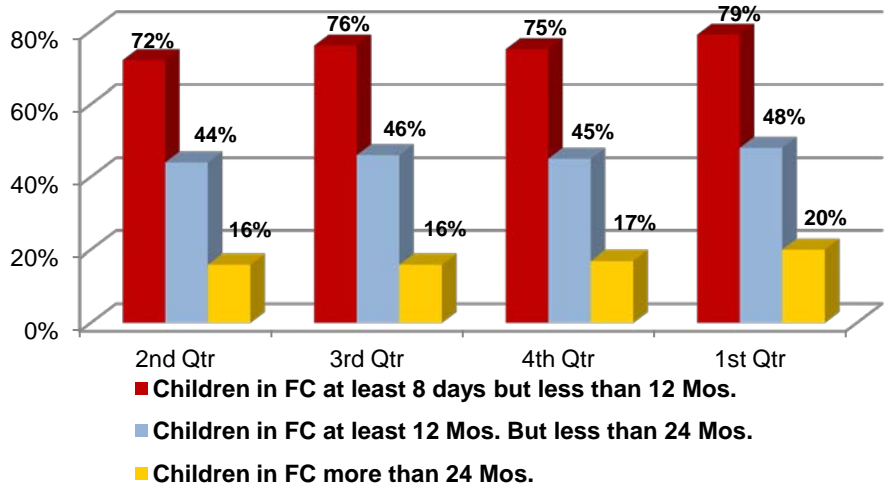


Placement Stability of Children in Foster Care

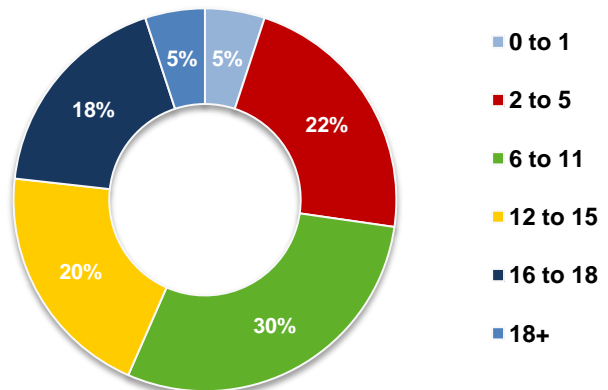
Placement stability is measured by the percentage of children with two or fewer placements who are in care for varying lengths of time.

Of children in care for less than 12 months, 79 percent experienced two or fewer placements; the national standard is 86 percent. Of the children in foster care between 12 and 24 months, 48 percent had two or fewer placements; the national standard for this group is 65.4 percent. Finally, of the children in care for over two years, only 20 percent experienced two or fewer placements, with the national standard being 41.8 percent.

Children in Foster Care who have Experienced Two or Fewer Placements



Ages of Children who Experienced Three or More Placements



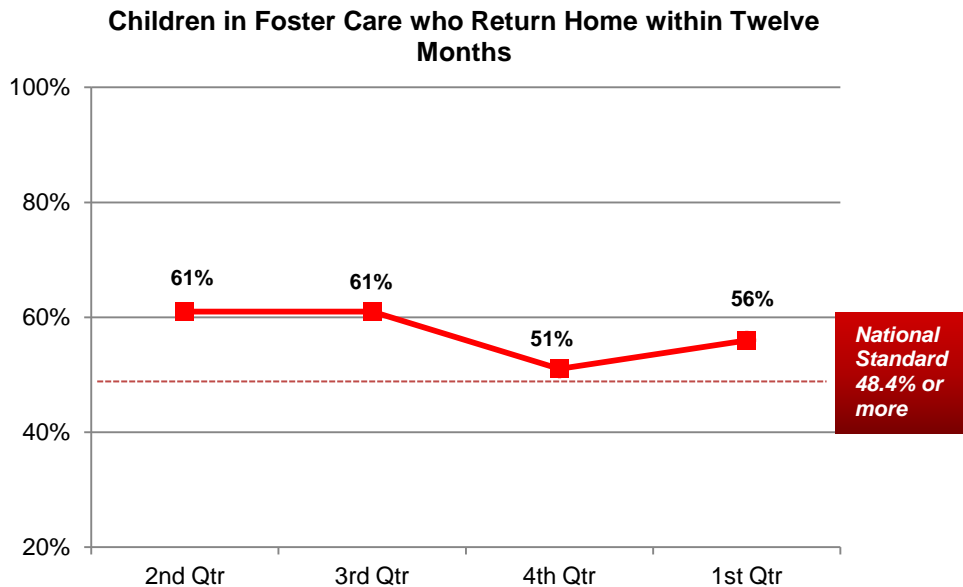
Children six to 11 represent the largest group of children who experienced three or more placements during their stay in foster care.

Quick Facts

Benefits to Children and Families

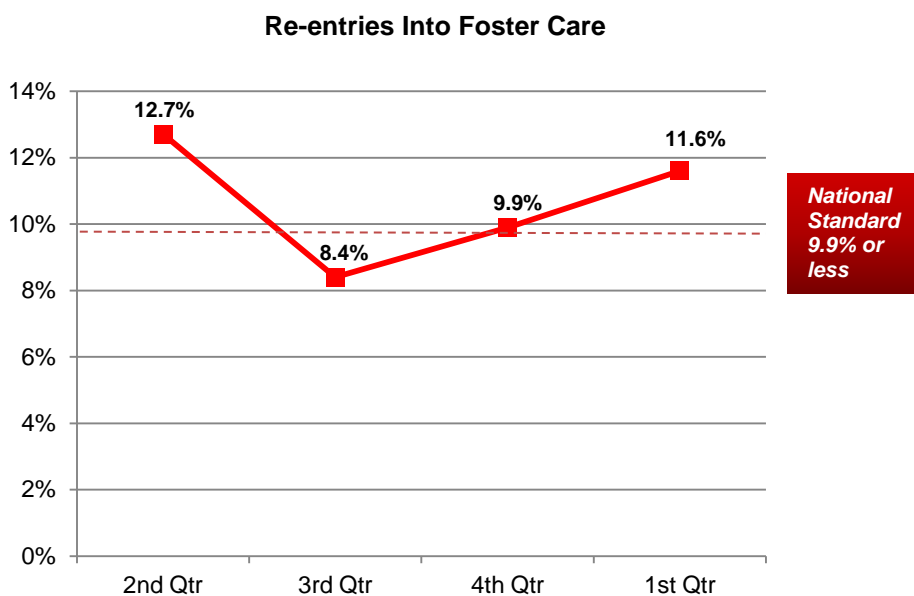
Children in Foster Care Who Return Home Within Twelve Months

Fifty-six percent of the children who entered foster care during the first quarter one year ago returned to their families within 12 months, exceeding the national standard of 48.4 percent.



Preventing Children's Re-entry Into Foster Care

Of the children who were discharged to their families during the first quarter one year ago, 11.6 percent re-entered foster care within 12 months. The Division did not meet the national standard of 9.9 percent for this quarter.



Quick Facts

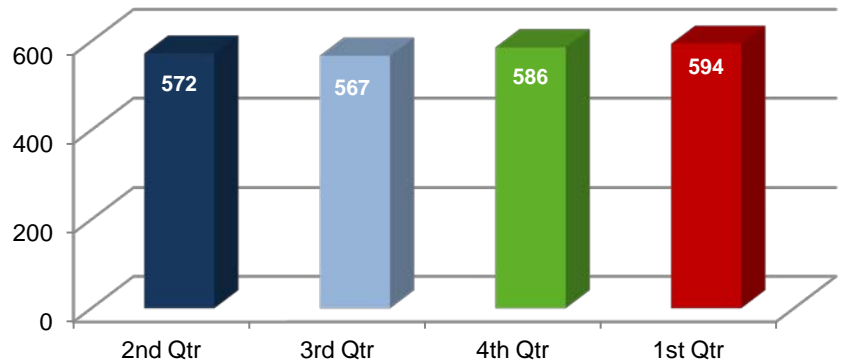
Adoption

Volume and Description of Cases

Children Available for Adoption ³

At the end of the quarter, 594 children were available for adoption.

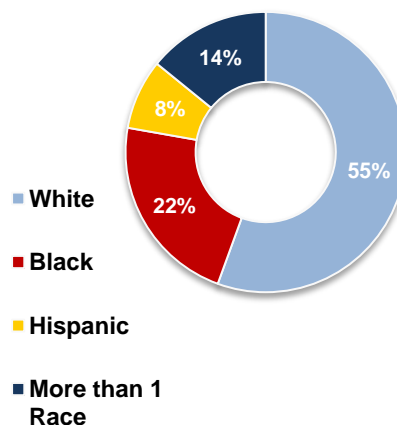
Number of Children Available for Adoption at the End of the Quarter



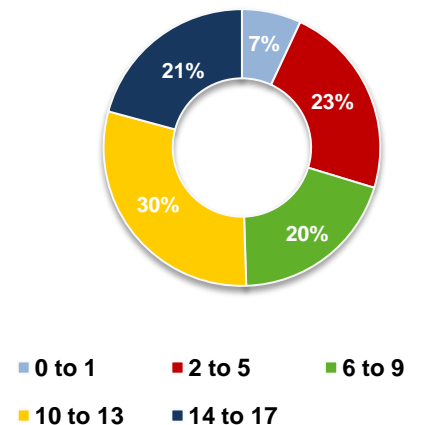
Characteristics of Children Available for Adoption

Of the available children, 55 percent were white and 22 percent were black. The largest group ranged in age from ten to 13 years.

Race/Ethnicity of Children Available for Adoption



Ages of Children Available for Adoptions

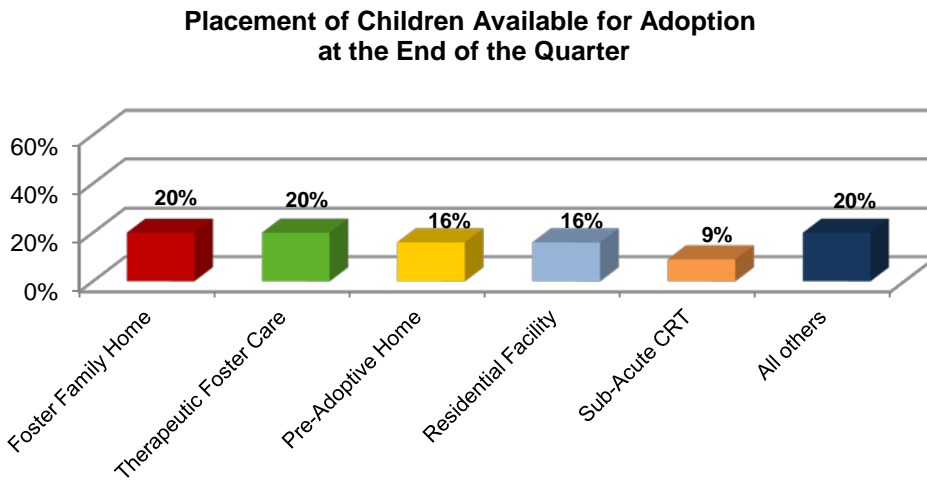


³ Children available for adoption are defined as those who have a termination of parental rights on both parents and a goal of adoption.

Quick Facts

Placement of Children Available for Adoption

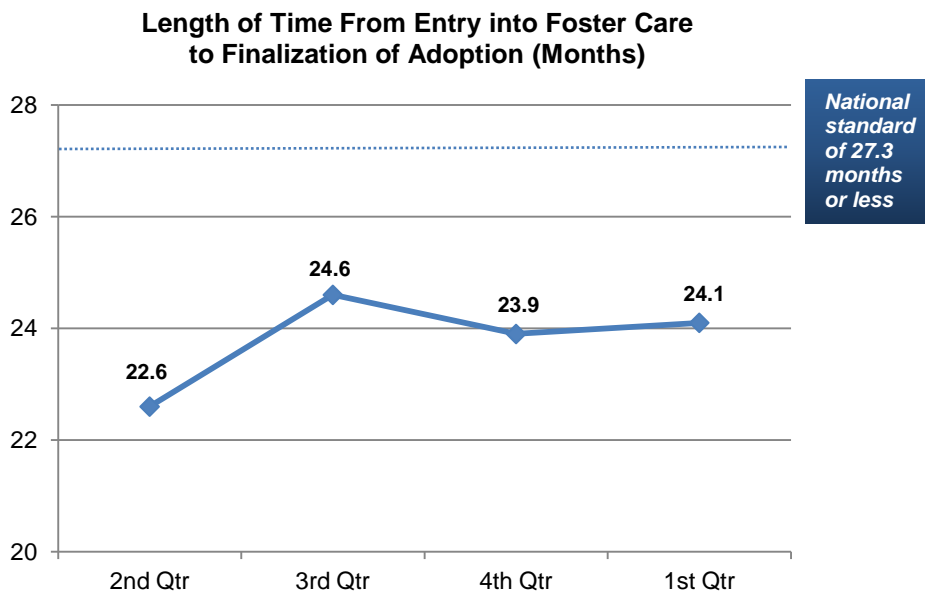
The majority of the children available for adoption at the end of the quarter resided in either a foster family home or a therapeutic foster home.



Meeting Agency Policies

Length of Time to Adoption

The median length of time from entry into foster care until finalization of adoption for children whose adoptions were finalized during the first quarter was just over 24 months, over three months sooner than the national standard of 27.3 months.



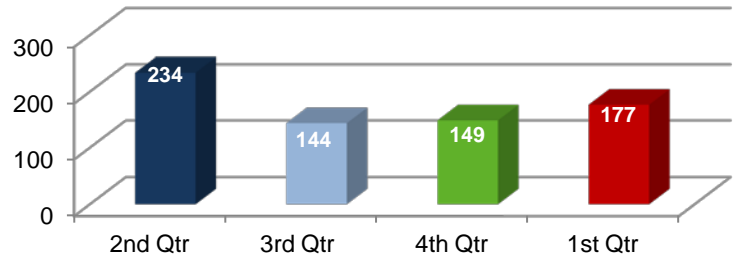
Quick Facts

Benefits to Children and Families

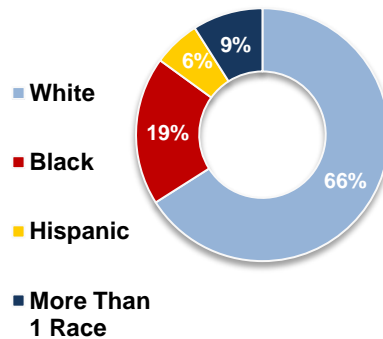
Finalized Adoptions

One hundred and seventy-seven adoptions were finalized during the first quarter of SFY 2016.

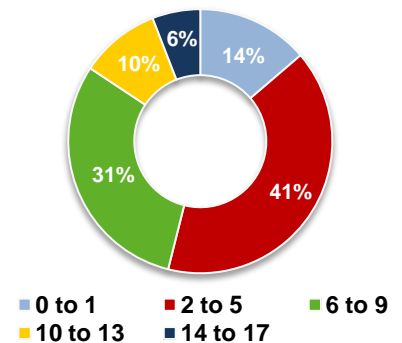
Number of Adoptions Finalized During the Quarter



Race/Ethnicity of Children with Finalized Adoptions



Ages of Children with Finalized Adoption



Children ages two to five were the largest group adopted during the quarter.

Subsidized Adoptions

Subsidies are given to children with special needs, defined as:

- Caucasian and over nine
- African-American and at least two
- At least two members of a sibling group
- Children who have severe medical or psychological needs that require ongoing treatment
- Children at high risk for the development of serious physical, mental, or emotional conditions documented by a medical professional

During the first quarter, 164 children began receiving adoption subsidies. Of those, 151 were federally-funded subsidies and 13 were state-funded.

During the quarter, a total of 5,271 children received adoption subsidies.

Caseworkers and Caseloads

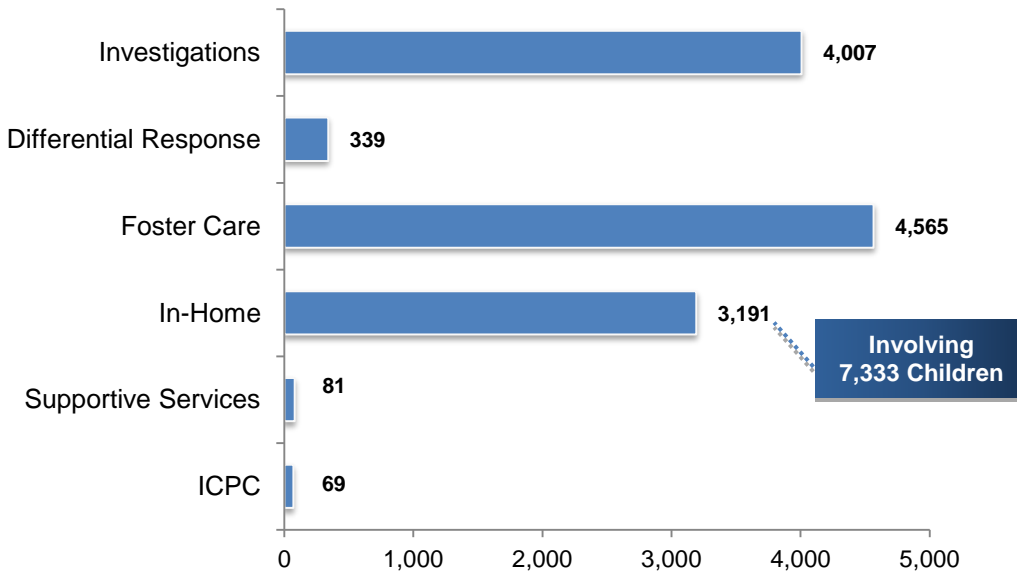
Caseloads at the End of the Quarter

As of the end of the quarter, the Division was responsible for:

- 4,007 investigations of child maltreatment and 339 DR cases,
- 4,565 foster care cases (4,343 excluding adoption cases),
- 3,191 in-home cases, involving 7,333 children,
- 81 supportive services cases and 69 ICPC cases.

This is while the Division was staffed with 404 family service workers, which on average includes 90 staff dedicated to investigations full time and another 34 staff who conduct investigations while also carrying other cases.

Types of Cases at the End of the Quarter



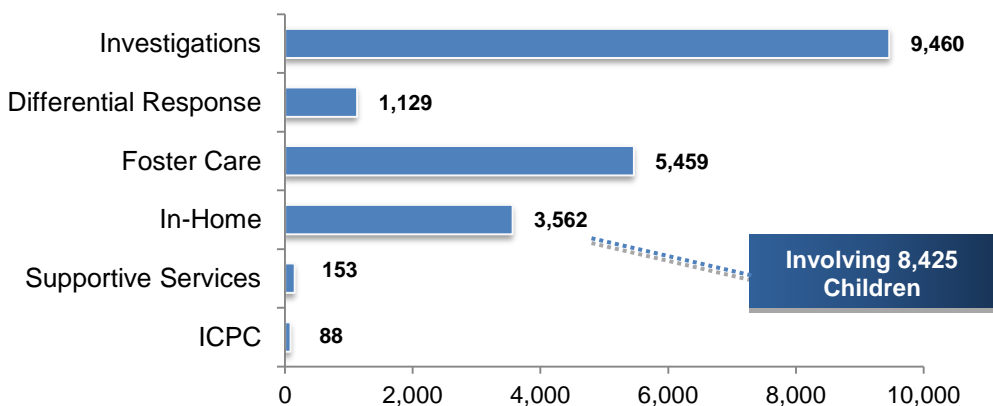
One foster care case is equal to one child in care; one in-home or supportive services case constitutes an entire family, many of which have multiple children.

Caseloads Handled *During* the Quarter

This shows the number of cases that cycled through the system anytime during the quarter (as opposed to those open at the end of the quarter, described above).

The Division oversaw 9,460 investigations; 5,459 children in foster care; 3,562 in-home protective services cases; 1,129 DR cases; 153 supportive services cases; and 88 interstate compact for the placement of children (ICPC) cases.

Types of Cases Served During the Quarter



Quick Facts

Average Caseload

The average caseload statewide stood at just below 30 cases per worker at the end of the quarter. This average is double the standard of about 15 cases per worker set by the Child Welfare League of America.

The average caseload for each county as of September 2015 is presented in Appendix E.

Foster Homes

Foster Homes and Beds

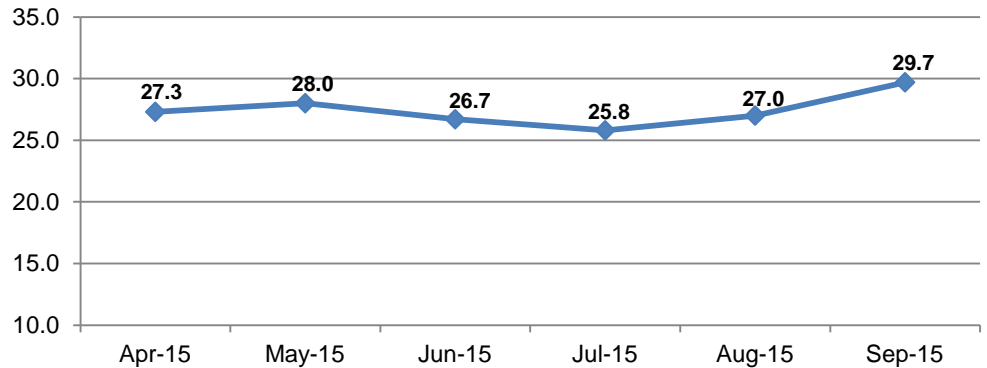
There were 1,370 licensed foster family homes open at the end of the first quarter statewide.

Due to recent changes in the designation of certain types of foster family homes in the Division's automated child welfare system, the data for the previous three quarters were reproduced to provide an accurate comparison to 1st Quarter SFY 2016. Therefore, the numbers cited in this report for the previous three quarters are slightly different than those reported in the previously-produced Quarterly Performance Reports for the respective periods.

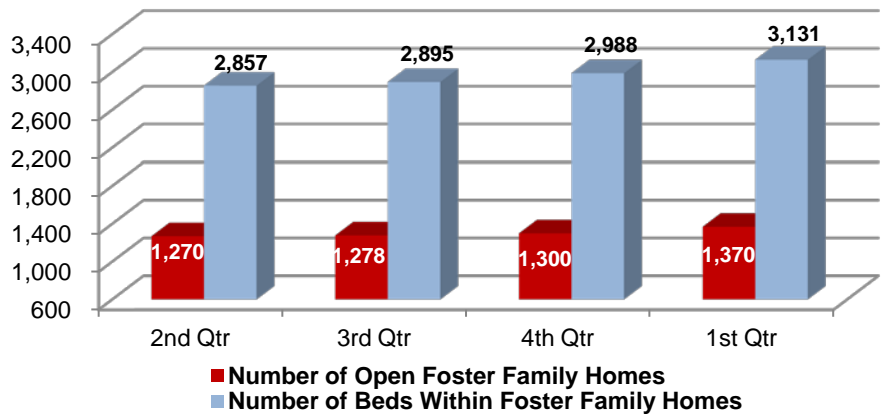
During the quarter 194 new foster homes were opened and 124 were closed, for a net gain of 70 homes.

Appendix F displays the closure reasons for the foster homes that closed during the quarter.

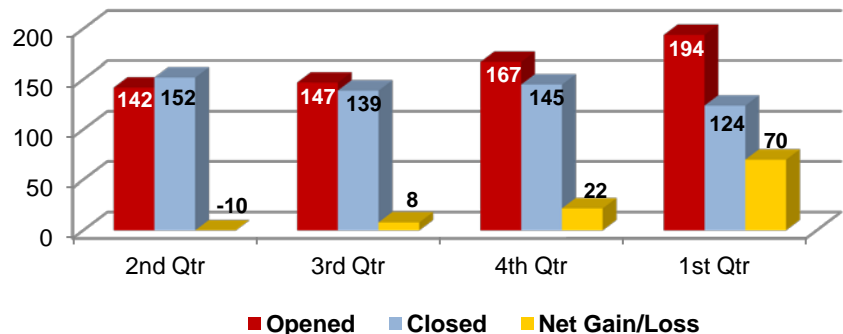
Average Caseload at the End of Month



Number of Foster Homes and Beds at the End of Quarter



Number of Foster Family Homes Opened and Closed During the Quarter

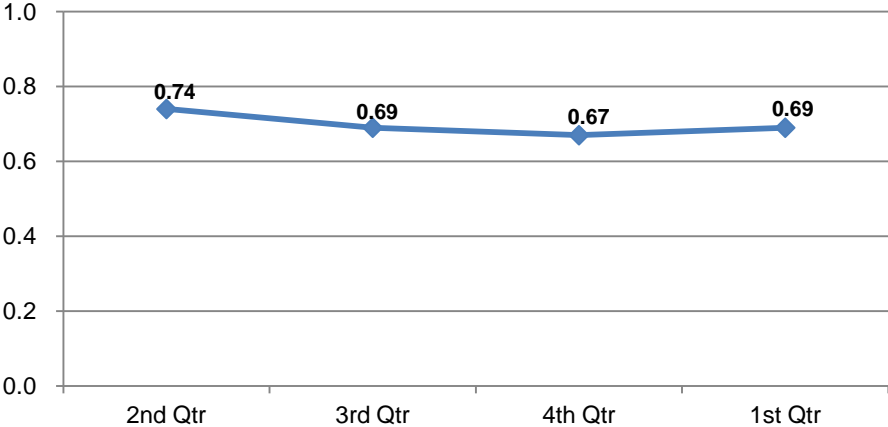


Quick Facts

Ratio of Foster Home Beds to Foster Children

The ratio of licensed foster home beds to children in foster care was less than one (0.69) at the end of the quarter, giving workers few choices of where to place children.

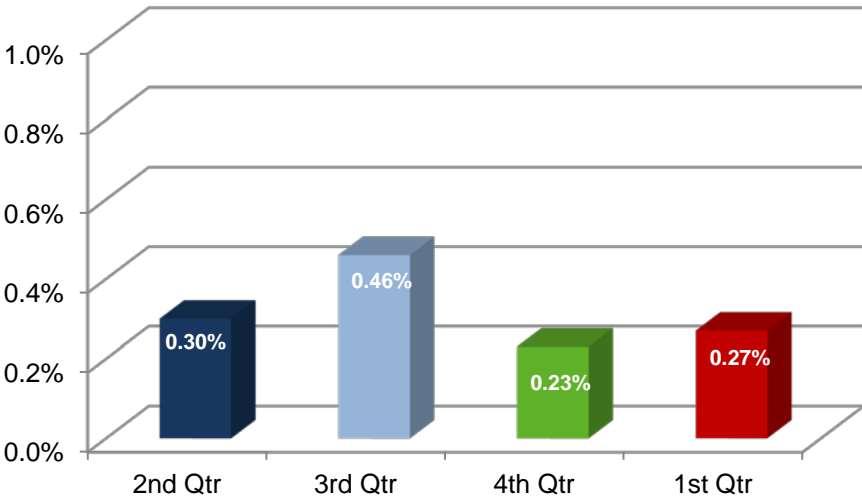
Foster Bed to Foster Child Ratio



Percentage of Foster Families with True Reports of Maltreatment

Four reports in which foster parents were identified as alleged offenders were determined to be true during the quarter. Based on the 1,460 foster homes active during that period, the percentage of foster families with a true report of maltreatment was 0.27 percent.

Percentage of Foster Families with True Reports of Maltreatment



Appendix G provides more detail on maltreatment reports concerning foster homes.

Appendix A: Breakdown of Child Maltreatment Reports Received During the Quarter and Substantiation Rates of Maltreatment Investigations⁴

	DCFS				CACD		
	Total Assessments Assigned for DR	Total Assessments Assigned for Investigation	True Investigations	Percent True	Total Assessments Assigned for Investigation	True Investigations	Percent True
Second Quarter 2015	949	6,292 <i>5,987 Closed</i>	1,137	19%	1,553 <i>1,448 Closed</i>	554	38%
Third Quarter 2015	890	5,677 <i>5,515 Closed</i>	1,128	20%	1,398 <i>1,251 Closed</i>	480	38%
Fourth Quarter 2015	947	6,153 <i>5,924 Closed</i>	1,414	24%	1,505 <i>1,316 Closed</i>	501	38%
First Quarter 2016	797	5,894 <i>5,414 Closed</i>	1,243	23%	1,677 <i>1,483 Closed</i>	552	37%

⁴ The data cited in this appendix run two months behind the referenced quarter (e.g., the first quarter refers to 5/1/2015 through 7/31/2015); as a result, the numbers cited in this appendix differ from those cited throughout the report which considers the actual quarter. This is because investigations have a 45-day completion timeframe and this allows enough time to pass to measure the disposition of the investigations. An investigation is excluded from the calculation of the substantiation rate in the event that it has not yet been closed (and thus a disposition has not yet been rendered).

Appendix B: Summary of Reports Involving Child Fatality

True Fatality Reports

Child	County	Age	Race	Gender	Date of Death	Allegations or Preliminary Cause of Death	Placement at the Time of Incident	Relationship of Alleged Offender to the Child	Agency Conducting the Investigation	Legal Action By the Department	Services Provided Prior to the Incident	Services Provided After the Incident
Lynzi Love	Garland	<1	UTD	Female	7/10/2015	Abuse	In-Home	Family Member	CACD	None	None	FC Case
Lacy Morgan	Arkansas	2	White	Female	7/13/2015	Inadequate Supervision	In-Home	Family Member	CACD	None	None	None
Wren Brenington	Hot Spring	<1	White	Male	7/14/2015	Inadequate Supervision	In-Home	Family Member	CACD	None	None	None
Dakota Bates	Searcy	5	White	Male	7/20/2015	Inadequate Supervision	In-Home	Family Member	CACD	None	PS Case	FC Case
Thomas Naramore	Garland	2	White	Male	7/24/15	Inadequate Supervision	In-Home	Family Member	CACD	None	None	None
Mackenzie Mucherson	Craighead	<1	Black	Female	8/10/15	Inadequate Supervision	In-Home	Family Member	CACD	None	None	None
Gage Brown	Mississippi	4	White	Male	8/16/15	Inadequate Supervision	In-Home	Family Member	CACD	None	None	None
Linda Warren	Sebastian	<1	White	Female	8/18/15	Inadequate Supervision	In-Home	Family Member	CACD	None	None	None
Leilani Richards	Ouachita	<1	Black	Female	8/19/15	Abuse	In-Home	Family Member	CACD	1st Degree Murder	None	None
Kalee Warren	Desha	5	Black	Male	8/27/15	Abuse	In-Home	Family Member	CACD	72 Hour Hold	FC Case	FC Case

Unsubstantiated Fatality Reports

Child	County	Age	Race	Gender	Date of Death	Allegations or Preliminary Cause of Death	Placement at the Time of Incident	Relationship of Alleged Offender to the Child	Agency Conducting the Investigation	Legal Action By the Department	Services Provided Prior to the Incident	Services Provided After the Incident
Angel Phifer	Pulaski	<1	Black	Female	7/1/2015	Inadequate Supervision	In-Home	Family Member	CACD	None	None	None
Hayden Harrison	Scott	5	White	Female	7/28/15	Inadequate Shelter	In-Home	Family Member	CACD	None	None	None
Jesse Dawson	Sebastian	<1	White	Male	8/4/2015	Neglect	In-Home	Family Member	CACD	None	None	None
James Storey	Arkansas	<1	White	Male	8/21/15	Inadequate Supervision	In-Home	Unknown	CACD	None	None	None
Dimyran Brown	Pulaski	<1	Black	Male	9/8/15	Medical Neglect	In-Home	Unknown	CACD	None	None	None

Pending Fatality Reports

Child	County	Age	Race	Gender	Date of Death	Allegations or Preliminary Cause of Death	Placement at the Time of Incident	Relationship of Alleged Offender to the Child	Agency Conducting the Investigation	Legal Action By the Department	Services Provided Prior to the Incident	Services Provided After the Incident
Jaslyn Trujillo	Sevier	<1	Hispanic	Female	7/27/2015	Failure to Protect	In-Home	Family Member	CACD	None	None	None
Serenity Breck	Carroll	<1	White	Female	8/1/2015	Abuse	In-Home	Unknown	CACD	None	None	None
Zariah James	Chicot	<1	Black	Female	8/7/2015	Inadequate Supervision	In-Home	Family Member	CACD	None	None	None

Appendix C: Summary of Reports Involving Near Child Fatality

True Near Fatality Reports

There were no true near child fatality reports during the first quarter of SFY 2016.

Unsubstantiated Near Fatality Reports

There were no unsubstantiated near child fatality reports during the first quarter of SFY 2016.

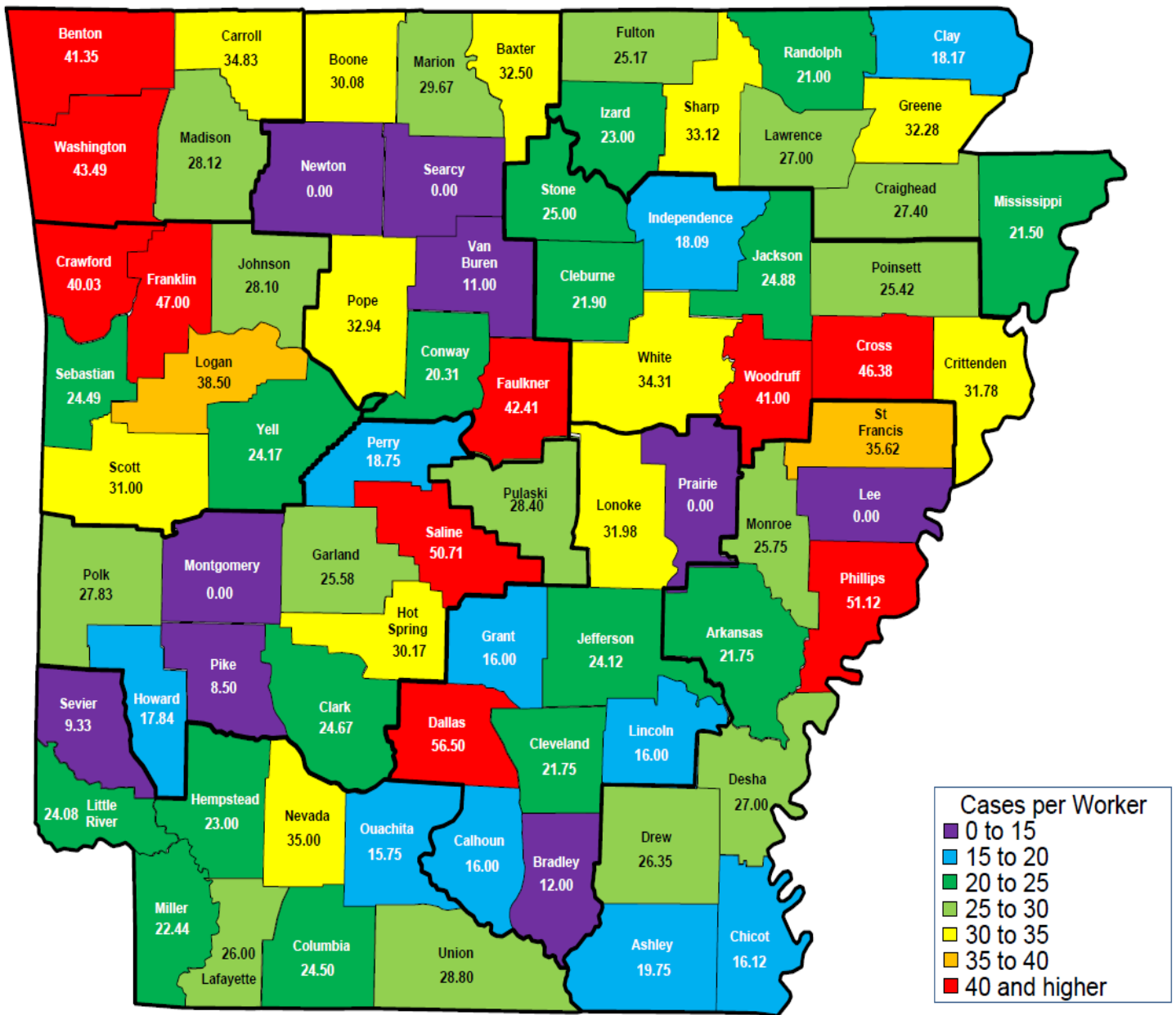
Pending Near Fatality Reports

There were no pending near child fatality reports during the first quarter of SFY 2016.

Appendix D: Fatalities of Children in Foster Care Who Did Not Receive a Maltreatment Investigation

Child	County	Age	Race	Gender	Date of Death	Preliminary Cause of Death	Placement at the Time of Incident	Legal Action By the Department	Services Provided Prior to the Incident	Services Provided After the Incident
Child #1	White	19	White	Female	8/18/2015	Car Accident	Foster Care	None	Foster Care	None

Appendix E: Average Caseload as of September 30, 2015, by County



Due to the fact that Prairie, Newton, Searcy, Lee, and Montgomery counties did not have any family service workers at the end of the quarter, their cases were assigned to workers from other counties.

Appendix F: Foster Home Closure Reasons

Area	County	Total	DHS Request	Family No Longer Interested	Non-Compliance/Failed Re-Evaluation	Other	Provider End Dated	Provider Request	Provider/Services No Longer Needed	Death of Parent	Founded Abuse/Neglect
1	Benton (Bentonville)	7	0	1	0	0	2	2	2	0	0
1	Carroll (Berryville)	0	0	0	0	0	0	0	0	0	0
1	Madison (Huntsville)	0	0	0	0	0	0	0	0	0	0
1	Washington (Fayetteville)	9	0	0	0	2	4	3	0	0	0
	Area Total	16	0	1	0	2	6	5	2	0	0
2	Crawford (Van Buren)	2	0	0	0	0	1	1	0	0	0
2	Franklin (Ozark)	0	0	0	0	0	0	0	0	0	0
2	Johnson (Clarksville)	6	2	0	0	2	2	0	0	0	0
2	Logan (Booneville)	0	0	0	0	0	0	0	0	0	0
2	Logan (Paris)	1	1	0	0	0	0	0	0	0	0
2	Scott (Waldron)	0	0	0	0	0	0	0	0	0	0
2	Sebastian (Fort Smith)	7	2	0	0	1	0	2	1	0	1
2	Yell (Danville)	0	0	0	0	0	0	0	0	0	0
	Area Total	16	5	0	0	3	3	3	1	0	1
3	Clark (Arkadelphia)	0	0	0	0	0	0	0	0	0	0
3	Garland (Hot Springs)	7	0	2	0	0	3	2	0	0	0
3	Hot Spring (Malvern)	2	0	0	0	0	2	0	0	0	0
3	Howard (Nashville)	1	1	0	0	0	0	0	0	0	0
3	Montgomery (Mount Ida)	0	0	0	0	0	0	0	0	0	0
3	Perry (Perryville)	1	0	0	0	0	0	1	0	0	0
3	Pike (Murfreesboro)	1	0	0	0	0	1	0	0	0	0
3	Polk (Mena)	0	0	0	0	0	0	0	0	0	0
3	Saline (Benton)	9	0	0	0	1	1	7	0	0	0
	Area Total	21	1	2	0	1	7	10	0	0	0
4	Columbia (Magnolia)	0	0	0	0	0	0	0	0	0	0
4	Hempstead (Hope)	0	0	0	0	0	0	0	0	0	0
4	Lafayette (Lewistown)	0	0	0	0	0	0	0	0	0	0
4	Little River (Ashdown)	0	0	0	0	0	0	0	0	0	0
4	Miller (Texarkana)	0	0	0	0	0	0	0	0	0	0
4	Nevada (Prescott)	0	0	0	0	0	0	0	0	0	0
4	Ouachita (Camden)	1	0	1	0	0	0	0	0	0	0
4	Sevier (DeQueen)	2	1	1	0	0	0	0	0	0	0
4	Union (El Dorado)	1	0	0	0	0	1	0	0	0	0
	Area Total	4	1	2	0	0	1	0	0	0	0
5	Baxter (Mountain Home)	1	0	0	0	0	1	0	0	0	0
5	Boone (Harrison)	1	0	0	0	0	1	0	0	0	0
5	Conway (Morrilton)	1	1	0	0	0	0	0	0	0	0
5	Faulkner (Conway)	8	2	0	0	1	4	1	0	0	0
5	Marion (Yellville)	0	0	0	0	0	0	0	0	0	0
5	Newton (Jasper)	0	0	0	0	0	0	0	0	0	0
5	Pope (Russellville)	2	0	1	0	0	0	0	1	0	0
5	Searcy (Marshall)	0	0	0	0	0	0	0	0	0	0
5	Van Buren (Clinton)	0	0	0	0	0	0	0	0	0	0
	Area Total	13	3	1	0	1	6	1	1	0	0
6	Pulaski	0	0	0	0	0	0	0	0	0	0
6	Pulaski (East)	1	0	0	0	0	1	0	0	0	0
6	Pulaski (Jacksonville)	1	0	0	0	1	0	0	0	0	0
6	Pulaski (North)	4	0	1	0	0	3	0	0	0	0
6	Pulaski (South)	4	0	0	0	0	3	1	0	0	0
6	Pulaski (Southwest)	3	1	0	0	0	0	2	0	0	0
	Area Total	13	1	1	0	1	7	3	0	0	0

Area	County	Total	DHS Request	Family No Longer Interested	Non-Compliance/Failed Re-Evaluation	Other	Provider End Dated	Provider Request	Provider/Services No Longer Needed	Death of Parent	Founded Abuse/Neglect
7	Bradley (Warren)	0	0	0	0	0	0	0	0	0	0
7	Calhoun (Hampton)	0	0	0	0	0	0	0	0	0	0
7	Cleveland (Rison)	0	0	0	0	0	0	0	0	0	0
7	Dallas (Fordyce)	0	0	0	0	0	0	0	0	0	0
7	Grant (Sheridan)	0	0	0	0	0	0	0	0	0	0
7	Jefferson (Pine Bluff)	3	0	0	0	0	2	0	1	0	0
7	Lincoln (Star City)	0	0	0	0	0	0	0	0	0	0
7	Lonoke (Lonoke)	2	0	0	0	0	2	0	0	0	0
7	Prairie (DeValls Bluff)	0	0	0	0	0	0	0	0	0	0
	Area Total	5	0	0	0	0	4	0	1	0	0
8	Clay (Piggott & Corning)	2	0	0	0	2	0	0	0	0	0
8	Craighead (Jonesboro)	6	0	0	0	0	1	5	0	0	0
8	Fulton (Salem)	0	0	0	0	0	0	0	0	0	0
8	Greene (Paragould)	3	0	2	0	0	1	0	0	0	0
8	Izard (Melbourne)	0	0	0	0	0	0	0	0	0	0
8	Lawrence (Walnut Ridge)	4	0	0	0	0	3	1	0	0	0
8	Mississippi (Blytheville)	1	0	0	0	0	1	0	0	0	0
8	Mississippi (Osceola)	0	0	0	0	0	0	0	0	0	0
8	Randolph (Pocahontas)	3	0	0	0	0	2	1	0	0	0
8	Sharp (Ash Flat)	2	0	0	0	0	1	1	0	0	0
	Area Total	21	0	2	0	2	9	8	0	0	0
9	Cleburne (Heber Springs)	2	0	1	0	0	1	0	0	0	0
9	Crittenden (West Memphis)	1	0	0	0	1	0	0	0	0	0
9	Cross (Wynne)	2	1	0	0	1	0	0	0	0	0
9	Independence (Batesville)	2	0	2	0	0	0	0	0	0	0
9	Jackson (Newport)	1	1	0	0	0	0	0	0	0	0
9	Poinsett (Harrisburg)	0	0	0	0	0	0	0	0	0	0
9	Stone (Mountain View)	0	0	0	0	0	0	0	0	0	0
9	White (Searcy)	4	1	0	0	0	2	1	0	0	0
9	Woodruff (Augusta)	0	0	0	0	0	0	0	0	0	0
	Area Total	12	3	3	0	2	3	1	0	0	0
10	Arkansas (Dewitt)	0	0	0	0	0	0	0	0	0	0
10	Arkansas (Stuttgart)	0	0	0	0	0	0	0	0	0	0
10	Ashley (Hamburg)	0	0	0	0	0	0	0	0	0	0
10	Chicot (Lake Village)	1	0	0	0	0	0	1	0	0	0
10	Desha (McGehee)	0	0	0	0	0	0	0	0	0	0
10	Drew (Monticello)	0	0	0	0	0	0	0	0	0	0
10	Lee (Marianna)	0	0	0	0	0	0	0	0	0	0
10	Monroe (Brinkley)	0	0	0	0	0	0	0	0	0	0
10	Monroe (Clarendon)	0	0	0	0	0	0	0	0	0	0
10	Phillips (Helena)	0	0	0	0	0	0	0	0	0	0
10	St. Francis (Forrest City)	0	0	0	0	0	0	0	0	0	0
	Area Total	1	0	0	0	0	0	1	0	0	0
99	Out of State	2	0	1	0	0	1	0	0	0	0
	Statewide Total	124	14	13	0	12	47	32	5	0	1

Appendix G: Summary of Foster Care Maltreatment Reports

Characteristics of Children in Foster Care Involved in Allegations of Maltreatment, 1st Quarter SFY 2016

One hundred and thirty-nine reports of alleged maltreatment, involving 167 children in foster care, were received by the hotline during the first quarter of SFY 2016.

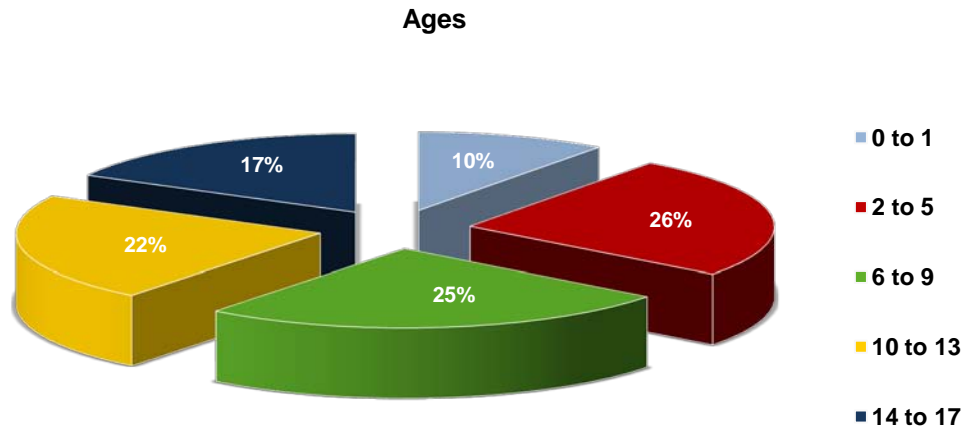
In 36 reports involving 60 children, foster parents⁵ were identified as the alleged offenders. As shown in the following chart, four of those reports were found to be true and all four homes were subsequently closed.

**Foster Home Maltreatment Reports
1st Quarter SFY 2016**

True	Unsubstantiated	Pending
4	31	1

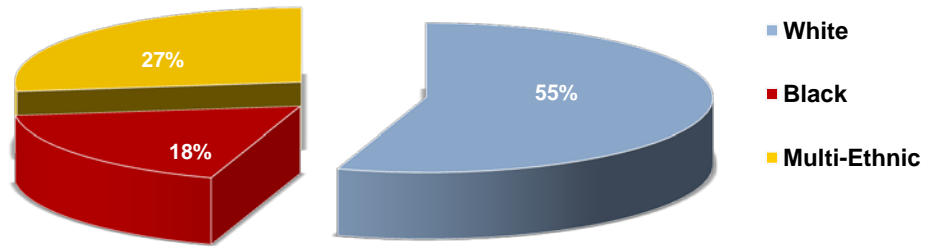
All allegations of maltreatment concerning foster homes are investigated by the Crimes Against Children Division (CACD) of the Arkansas State Police. DCFS staff do not actively participate in the investigation of these reports. Allegations of maltreatment regarding foster homes require the agency to assess the safety of all children residing in the home.

The following charts describe the characteristics of the 60 foster children involved in allegations of maltreatment, with foster parents as the alleged offenders.

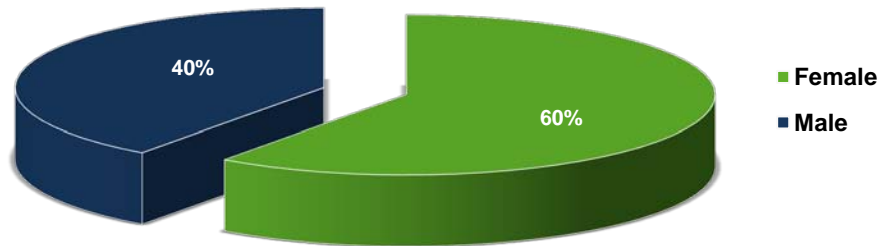


⁵ This includes foster family homes and therapeutic foster homes

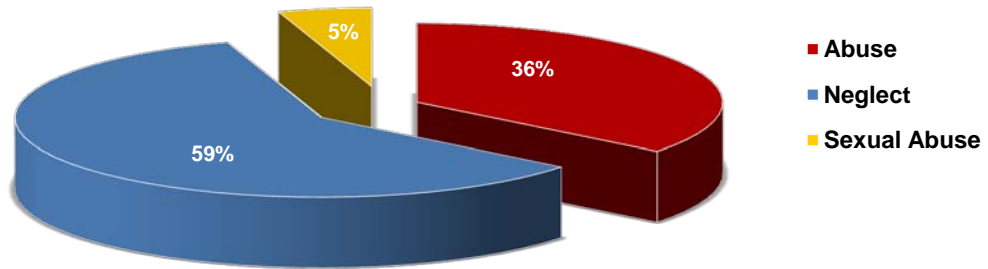
Race/Ethnicity



Gender



Allegation



County of Foster Homes in Which Alleged Maltreatment Occurred

County	Number of Children Involved in Maltreatment Report	County	Number of Children Involved in Maltreatment Report
Pulaski	26	Drew	2
Lonoke	3	Sebastian	2
Cleburne	3	Craighead	2
Crittenden	3	Sevier	2
Independence	3	Yell	1
Benton	3	Garland	1
Jefferson	3	Boone	1
Saline	2	Lawrence	1
Howard	2		