



The Division of Children and Family Services (DCFS) is responsible for ensuring the safety of children and youth in Arkansas. The Division engages children and their families through community-based services and supports to mitigate any safety concerns and risk factors and allow parents to successfully care for their children; and explore and strive to achieve other permanency options for children in which residing with their parents is no longer an option.

**What does  
DCFS do?**



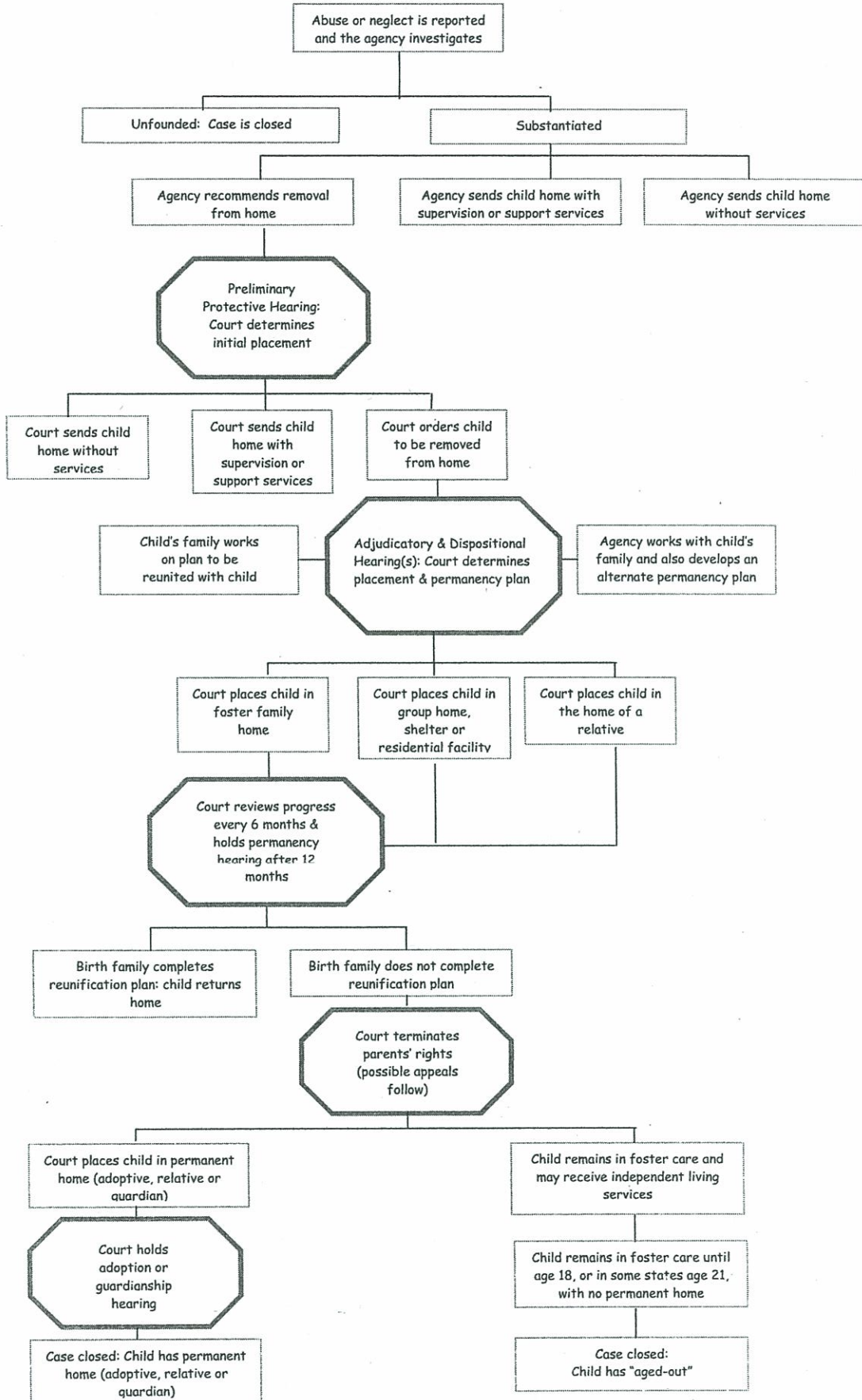
**Many are not aware of the extent of  
the activities performed by DCFS.**

### **In the last year alone (SFY 2013), DCFS performed the following:**

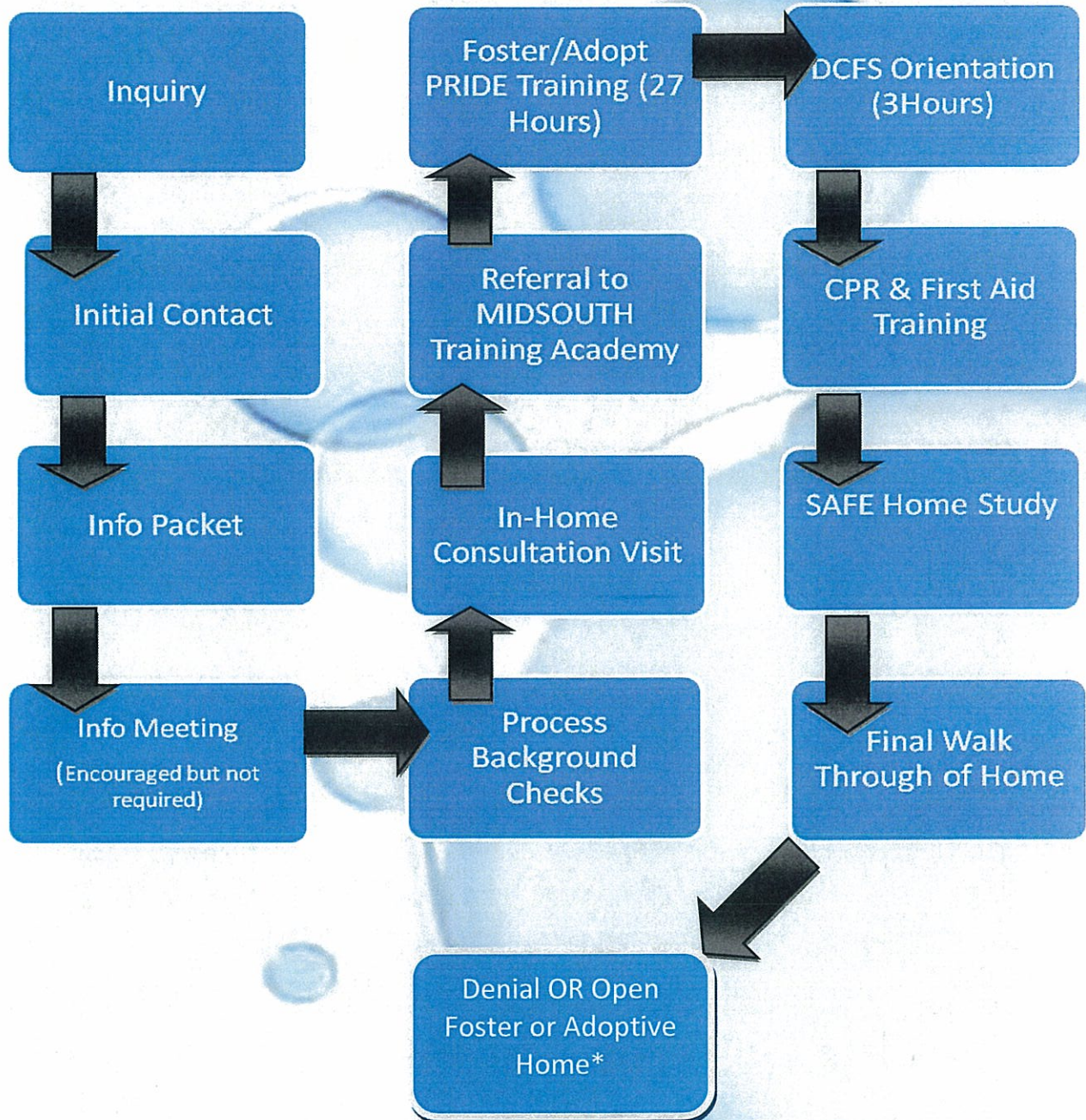


- Investigated 27,804 reports of child maltreatment involving 38,291 alleged victim children.
- Addressed concerns with 2,853 additional reports through either differential response (DR) or a referral for assessment (R/A).
- Provided placements and services to 7,700 children in foster care.
- Delivered in-home services to 11,151 families involving 25,852 children (not in foster care).
- Finalized the adoptions of 677 children from foster care.

# A Child's Journey through the Child Welfare System



**APPENDIX 6: FOSTER/ADOPTIVE PARENT APPLICATION & ASSESSMENT PROCESS**



\* If at any point during the home assessment the Division determines that an applicant does not meet the standards or any other criteria of a quality foster home, DCFS will deny approval of the home.



[www.adoptarkansas.org](http://www.adoptarkansas.org) — Adoptions

[www.stoparchildabuse.com](http://www.stoparchildabuse.com) — Child Abuse Prevention

[www.fosterarkansas.org](http://www.fosterarkansas.org) — Foster Parent

[www.state.ar.us/dhs/chilnfam/index.htm](http://www.state.ar.us/dhs/chilnfam/index.htm) — DCFS

Care ★ Commit ★ Connect

---



**Division of Children and Family Services  
Statistical 5 Year Snap Shot**

	SFY 2009	SFY 2010	SFY 2011	SFY 2012	SFY 2013
Foster Children	7,446	7,491	7,959	7,739	7,700
Protective Service Cases	10,385	11,804	12,479	11,825	11,151
Protective Service Children	23,071	26,047	29,658	28,380	25,852
Supportive Service Cases	850	1,086	1,023	673	503
Supportive Service Children	1,793	2,380	2,451	1,615	1,195
Investigations/Differential Response	30,191	32,915	33,849	35,743	36,206
DCFS	23,801	26,215	27,471	29,954	27,804
CACD	6,390	6,700	6,378	5,789	5,549
Differential Response	NA	NA	NA	NA	2,853
Staffing					
Full time	973	1,016	953	925	929
Extra help	23	16	17	15	9
Total	996	1,032	970	940	938
Caseload	35.92	25.18	27.00	27.09	25.32
Finalized Adoptions*	622	601	612	703	677
Children with Adoption Subsidy	3,110	3,411	3,679	4,025	4,423
Adoption Subsidies	\$ 16,673,205	\$ 18,244,549	\$ 20,112,845	\$ 22,056,339	\$ 24,514,908
State General Revenue	\$ 46,791,158	\$ 47,134,016	\$ 49,511,800	\$ 50,261,628	\$ 49,511,800
Transfers to ASP	\$ (1,371,772)	\$ (1,482,854)	\$ (1,699,208)	\$ (1,682,018)	\$ (1,660,313)
Transfers to Medicaid for DD waiver	\$ -	\$ -	\$ -	\$ (92,208)	\$ (300,767)
Adjusted General Revenue	\$ 45,419,386	\$ 45,651,162	\$ 47,812,592	\$ 48,487,402	\$ 47,550,720

\* Represent adoptions for FFY - 2013 SFY

Increase in investigations from 2011 to 2012 - attributed to change in age on underage juvenile aggressor from under 10 to under 13