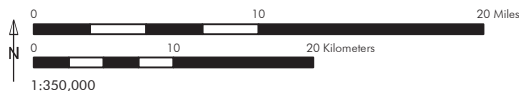


File: E:\GIS\Projects\CleanLine\Map9\Map9\_14\_12.mxd  
 Date: 12/12/2012 10:00:00 AM  
 Author: [Name]  
 Project: [Name]  
 Scale: 1:350,000  
 Units: Feet  
 Projection: NAD83  
 Data Sources: ESRI 2012; E & E 2012; USFWS 2012; Arkansas Game and Fish Commission, 2012; Oklahoma Department of Wildlife Conservation, 2012; USGS National Gap Analysis Program 2009-2010.  
 Service Layer Credits: National Geographic, Esri, DeLorme, NAVTEQ, UNEP-WCMC, USGS, NASA, ESA, METI, NRCAN, GEBCO, NOAA, IPC

Prepared for Scoping Comments  
December 2012

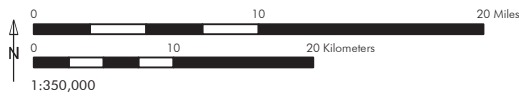
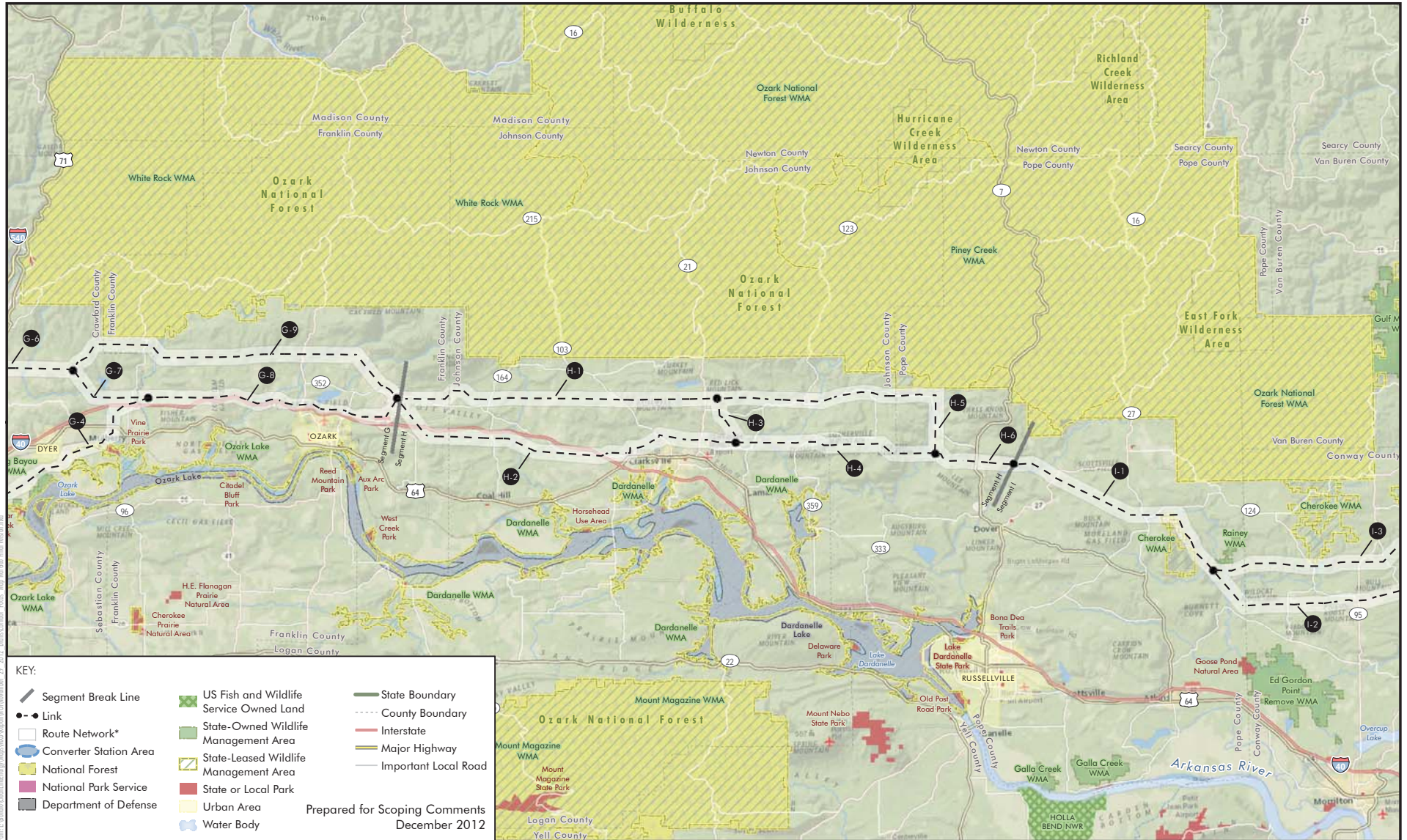


Data Sources: ESRI 2012; E & E 2012; USFWS 2012; Arkansas Game and Fish Commission, 2012; Oklahoma Department of Wildlife Conservation, 2012; USGS National Gap Analysis Program 2009-2010.  
Service Layer Credits: National Geographic, Esri, DeLorme, NAVTEQ, UNEP-WCMC, USGS, NASA, ESA, METI, NRCAN, GEBCO, NOAA, IPC

*\*Note: The Route Network is the area where the Project transmission line right-of-way could be routed. This area varies in width due to various sensitivities or opportunities, but generally is based on a 1-mile wide corridor.*

Route Network  
Plains & Eastern Clean Line  
Segment G; Frame 2 of 2  
Oklahoma, Arkansas and Tennessee

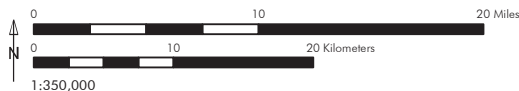
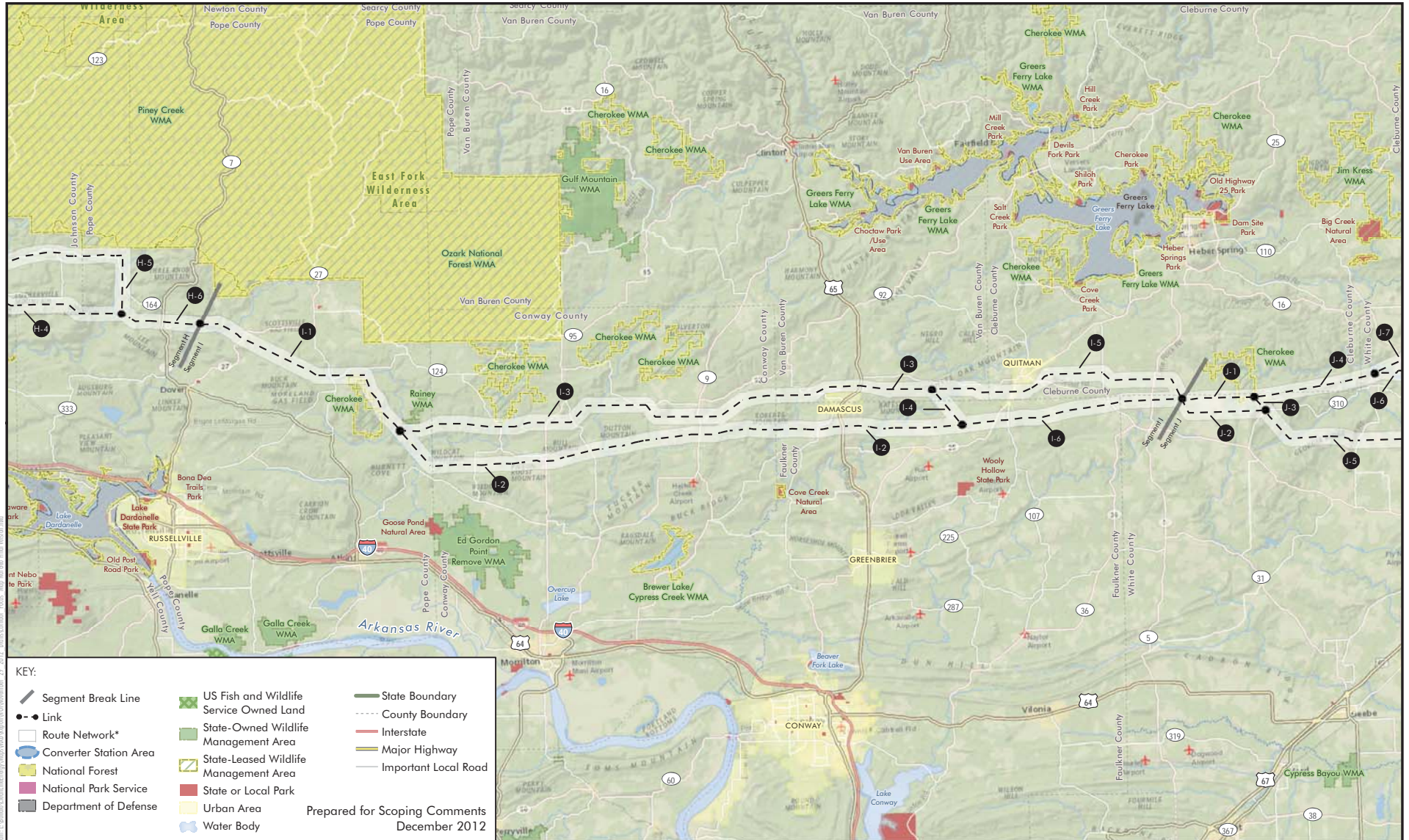




Data Sources: ESRI 2012; E & E 2012; USFWS 2012; Arkansas Game and Fish Commission, 2012; Oklahoma Department of Wildlife Conservation, 2012; USGS National Gap Analysis Program 2009-2010.  
Service Layer Credits: National Geographic, Esri, DeLorme, NAVTEQ, UNEP-WCMC, USGS, NASA, ESA, METI, NRCAN, GEBCO, NOAA, IPC

\*Note: The Route Network is the area where the Project transmission line right-of-way could be routed. This area varies in width due to various sensitivities or opportunities, but generally is based on a 1-mile wide corridor.



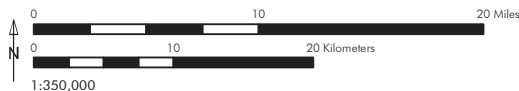
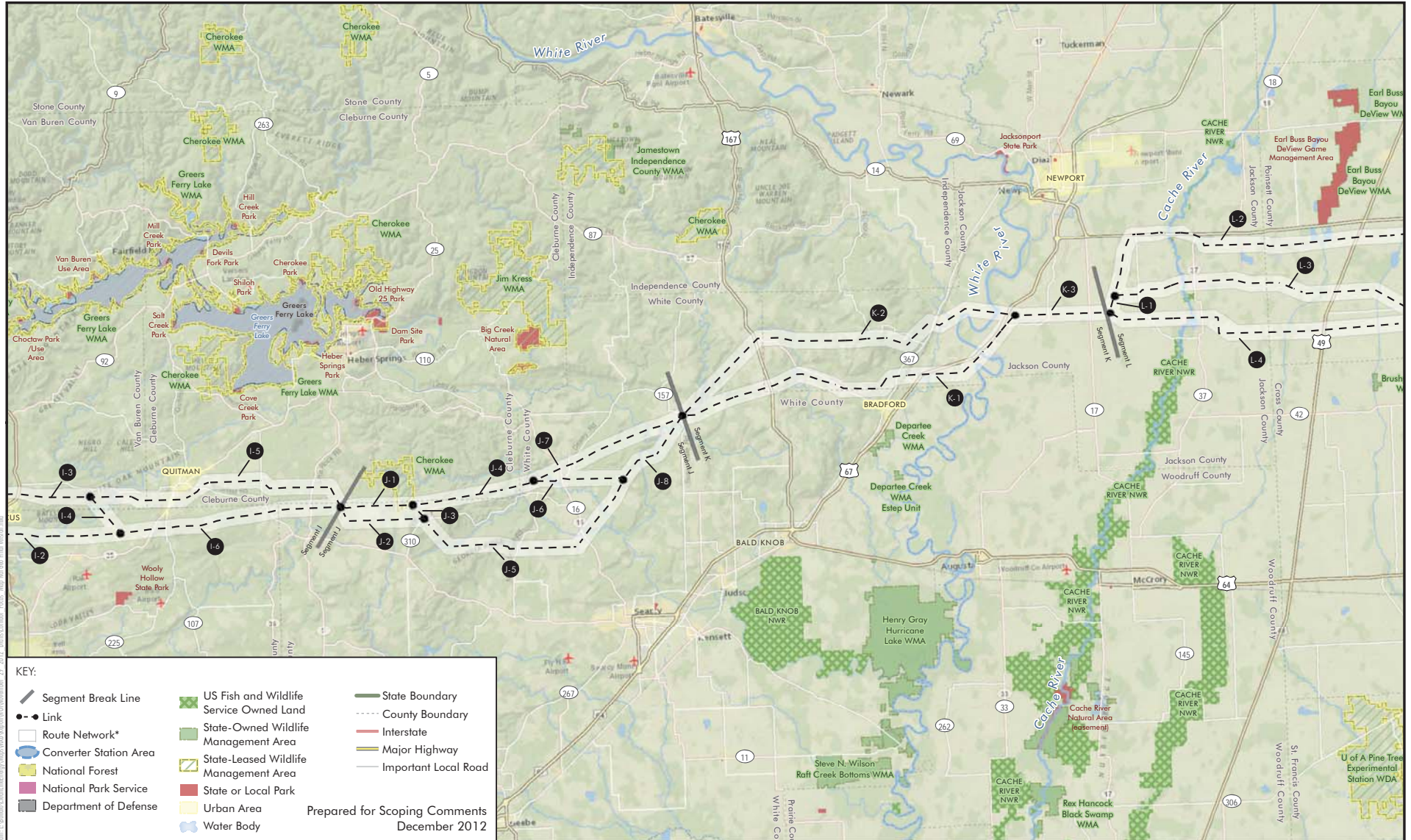


Data Sources: ESRI 2012; E & E 2012; USFWS 2012; Arkansas Game and Fish Commission, 2012; Oklahoma Department of Wildlife Conservation, 2012; USGS National Gap Analysis Program 2009-2010.  
Service Layer Credits: National Geographic, Esri, DeLorme, NAVTEQ, UNEP-WCMC, USGS, NASA, ESA, METI, NRCAN, GEBCO, NOAA, IPC

\*Note: The Route Network is the area where the Project transmission line right-of-way could be routed. This area varies in width due to various sensitivities or opportunities, but generally is based on a 1-mile wide corridor.

Route Network  
Plains & Eastern Clean Line  
Segment I; Frame 1 of 1  
Oklahoma, Arkansas and Tennessee



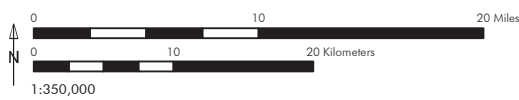
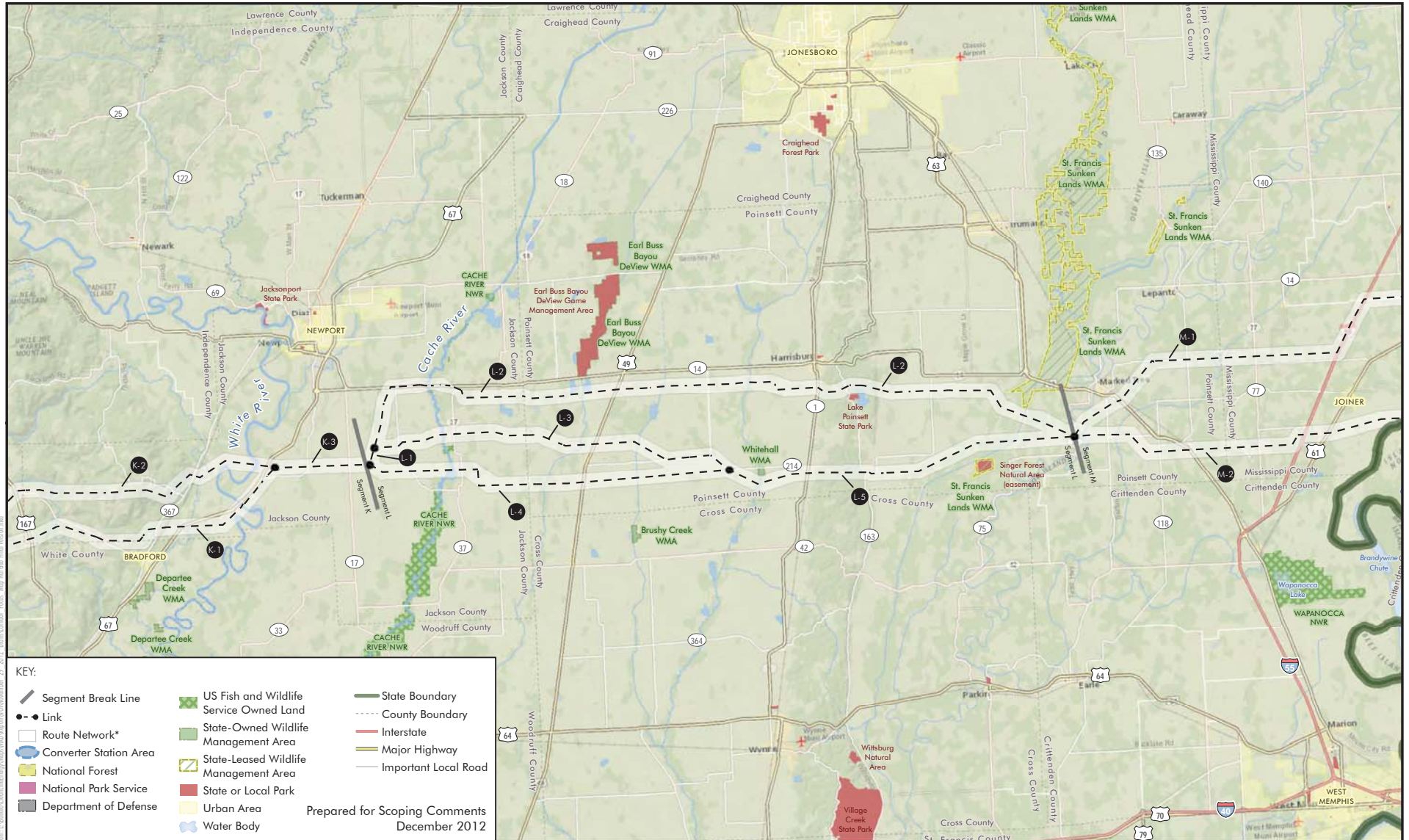


Data Sources: ESRI 2012; E & E 2012; USFWS 2012; Arkansas Game and Fish Commission, 2012; Oklahoma Department of Wildlife Conservation, 2012; USGS National Gap Analysis Program 2009-2010. Service Layer Credits: National Geographic, Esri, DeLorme, NAVTEQ, UNEP-WCMC, USGS, NASA, ESA, METI, NRCAN, GEBCO, NOAA, IPC

\*Note: The Route Network is the area where the Project transmission line right-of-way would be routed. This area varies in width due to various sensitivities or opportunities, but generally is based on a 1-mile wide corridor.

Route Network  
Plains & Eastern Clean Line  
Segment J and K; Frame 1 of 1  
Oklahoma, Arkansas and Tennessee



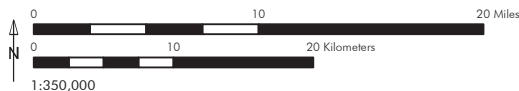
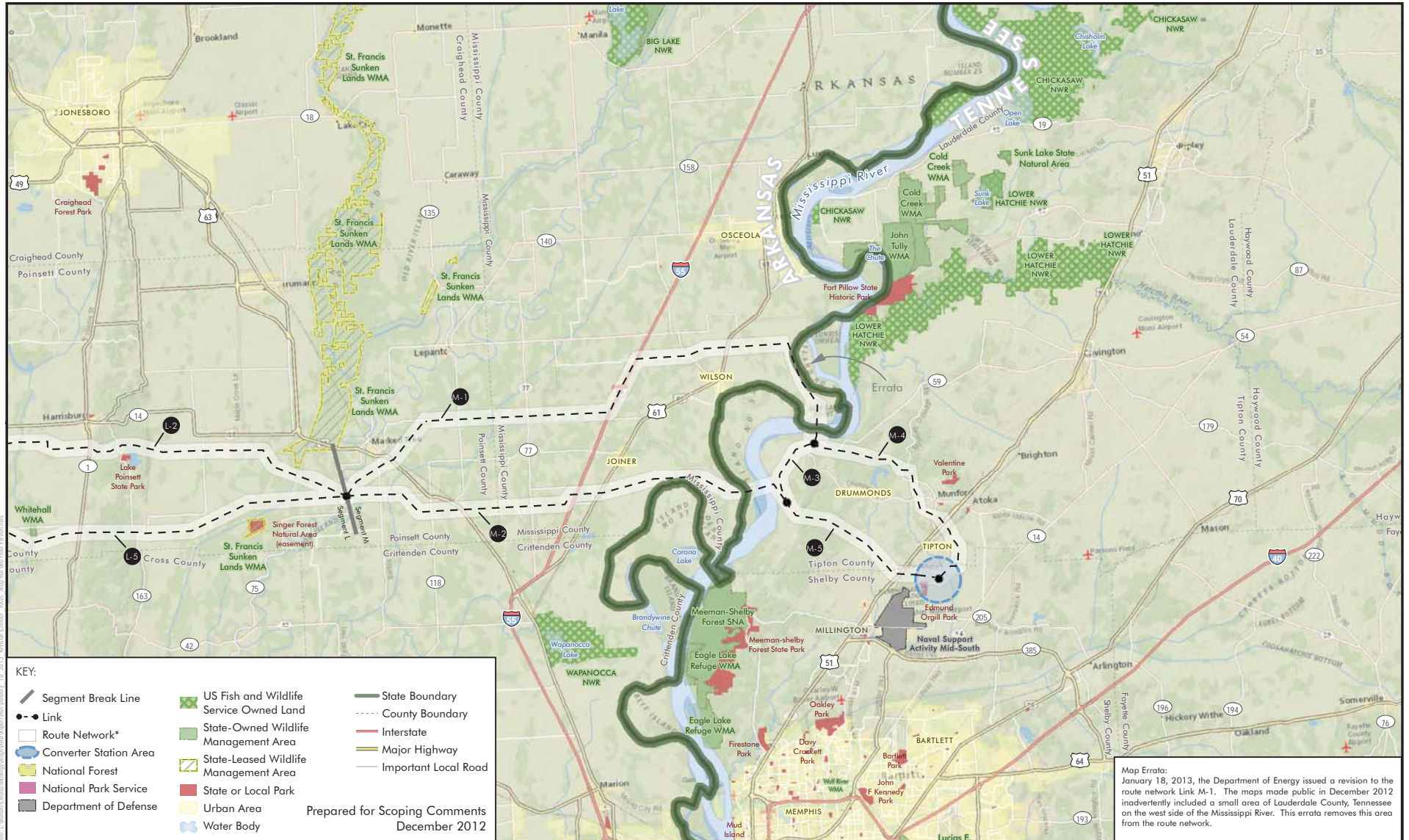


\*Note: The Route Network is the area where the Project transmission line right-of-way could be routed. This area varies in width due to various sensitivities or opportunities, but generally is based on a 1-mile wide corridor.

Route Network  
Plains & Eastern Clean Line  
Segment L; Frame 1 of 1  
Oklahoma, Arkansas and Tennessee



Map 14 of 14



Data Sources: ESRI 2012; E & E 2012; USFWS 2012; Arkansas Game and Fish Commission, 2012; Oklahoma Department of Wildlife Conservation, 2012; USGS National Gap Analysis Program 2009-2010.  
Service Layer Credits: National Geographic, Esri, DeLorme, NAVTEQ, UNEP-WCMC, USGS, NASA, ESA, METI, NRCAN, GEBCO, NOAA, IPC

\*Note: The Route Network is the area where the Project transmission line right-of-way could be routed. This area varies in width due to various sensitivities or opportunities, but generally is based on a 1-mile wide corridor.

Map Errata: January 18, 2013, the Department of Energy issued a revision to the route network Link M-1. The maps made public in December 2012 inadvertently included a small area of Lauderdale County, Tennessee on the west side of the Mississippi River. This errata removes this area from the route network.

Route Network  
Plains & Eastern Clean Line  
Segment M; Frame 1 of 1  
Oklahoma, Arkansas and Tennessee