

Bear Creek has a surface watershed of 88.4 square miles (Figure 1). It is the fourth largest tributary to the Buffalo River. Bear Creek has been on the 303(d) list for a number of years for total dissolved solids. The USGS operates a stream gaging station on Bear Creek where US 65 crosses the stream. This station collects continuous dissolved oxygen data. During the summers of 2014 and 2015, the dissolved oxygen levels regularly dropped below 6 mg/L (Figure 2). We have asked ADEQ to add dissolved oxygen as a non-attainment parameter for Bear Creek based upon this data.

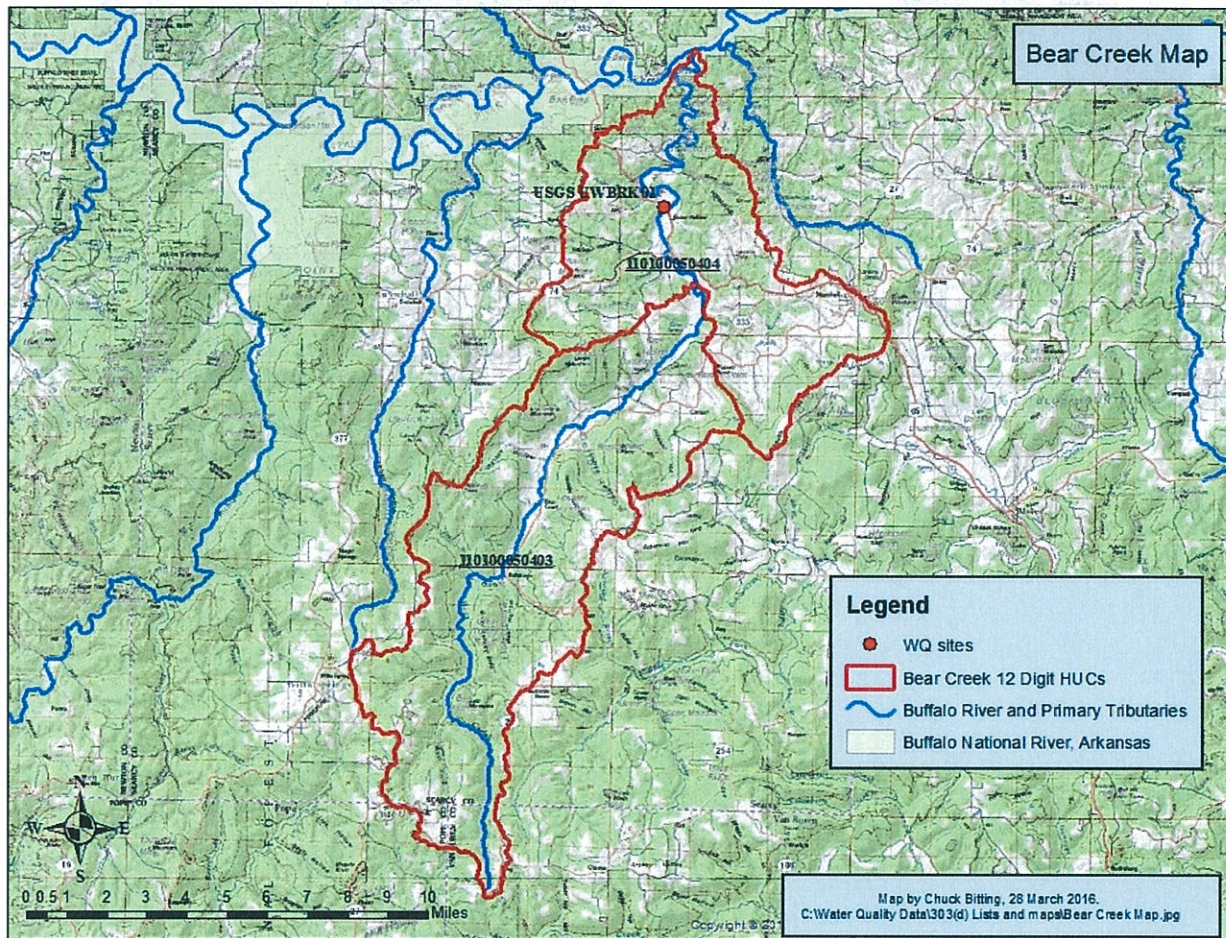


Figure 1: Map of Bear Creek showing the 12 digit Hydrologic Unit Codes and the USGS stream gaging station.

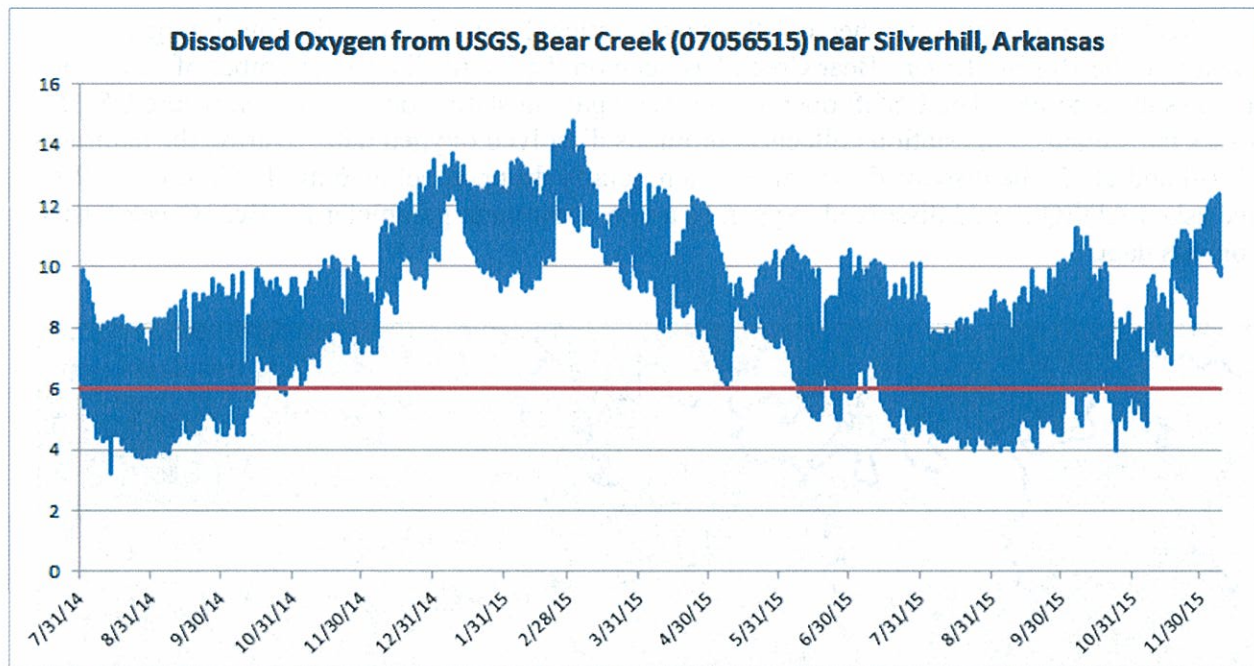


Figure 2: Bear Creek dissolved oxygen data, July 2014 to December 2015. The red line at 6 mg/L represents the critical level of dissolved oxygen for aquatic life.