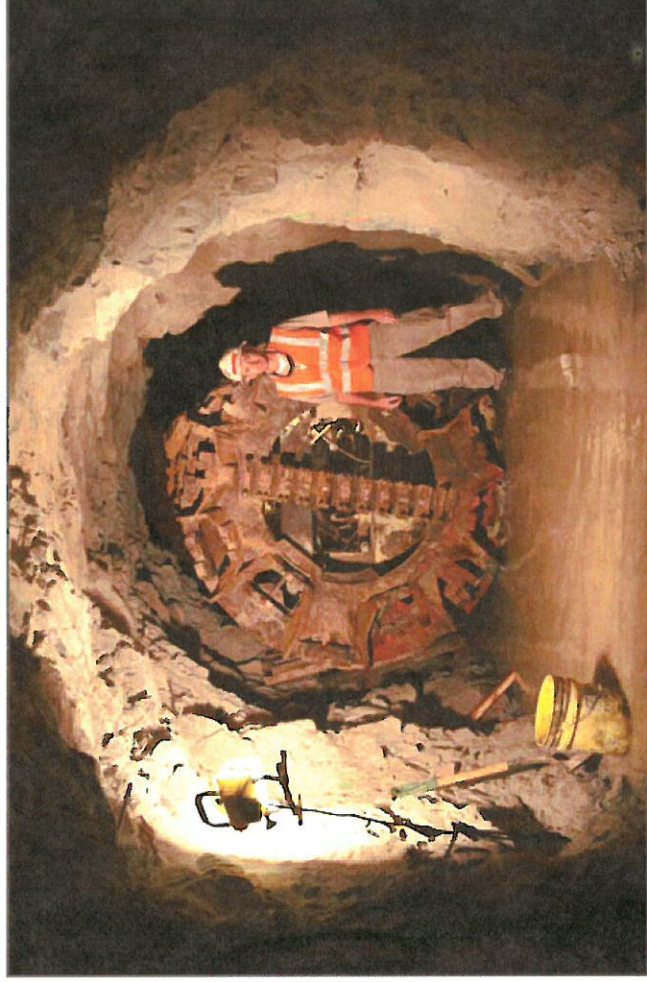
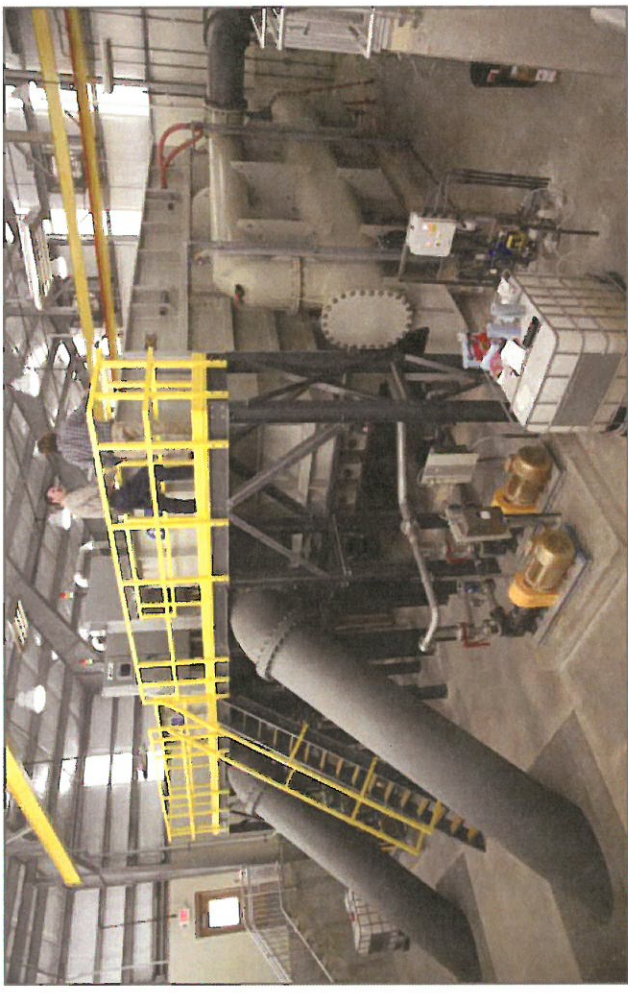


Batesville, Arkansas' new 9.0 MGD Moving Bed Bio-Reactor (MBBR) Wastewater Treatment Plant was operational as of January 2016. The new WWTP site is adjacent to the White River and at the foothills of Eagle Mountain.

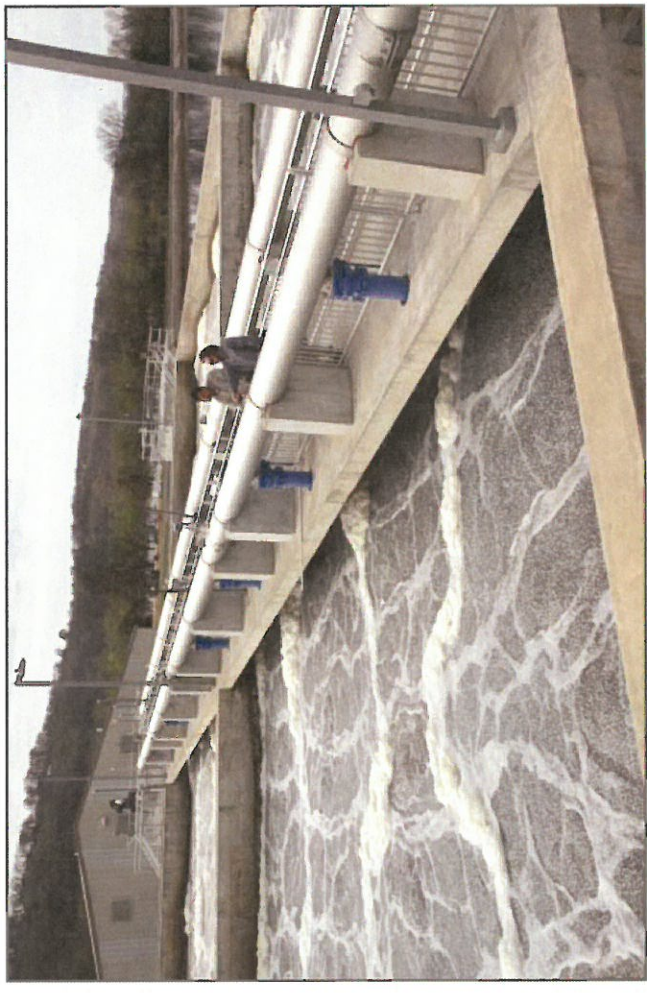
The 45 MGD screw pump lift station accommodates three 90-inch diameter screw pumps.



The system uses two high-efficiency micro-bubble Dissolved Air Flotation (DAF) Units.



The gravity sewer and tunnel is estimated to create an annual average energy savings of 62%.



This is the first MBBR facility in Arkansas and the largest in the United States following a lagoon.