



FERAL HOG

OVERVIEW

Overview

- Exotic animals that are not native to North America
- Deemed a “public nuisance” in Arkansas
- Responsible for **\$1.5 billion** in damages annually; \$300 million in agriculture (USDA APHIS)
- Estimated \$19 million in damages to row crops alone in Arkansas (USDA NASS Survey 2014).

Lincoln County: Star City



Newton County: Jasper



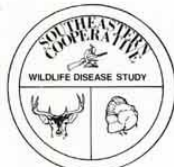
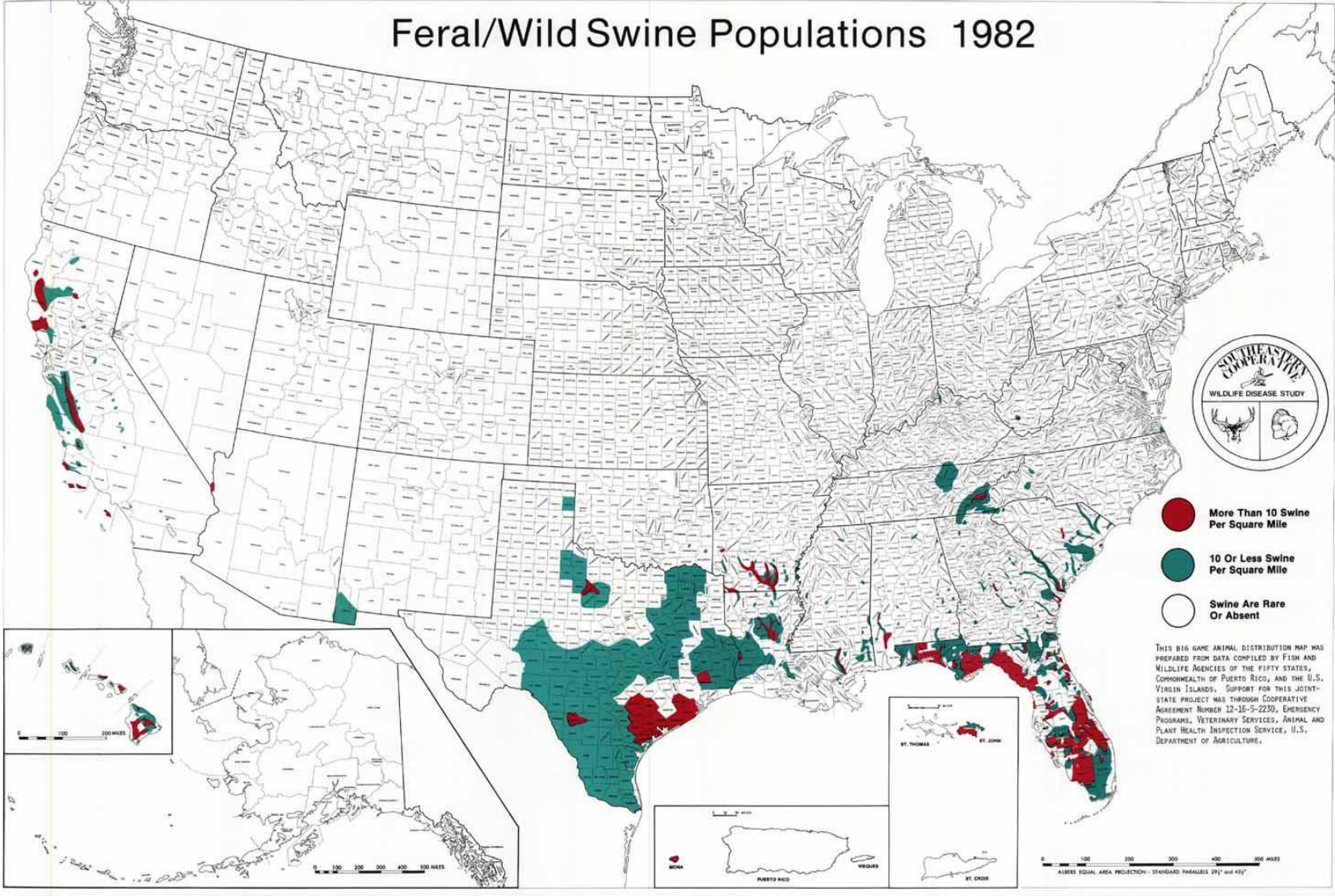
Columbia County: Magnolia



Overview

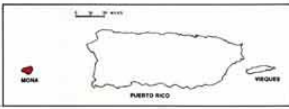
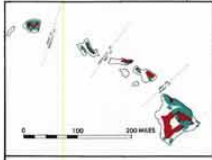
- Detrimental to wildlife habitat and populations
 - Feral hogs cannot be adequately controlled by recreational hunting
 - Direct competition for wildlife and natural resources
- Current management strategies represent a paradigm shift in methods, message and education

Feral/Wild Swine Populations 1982



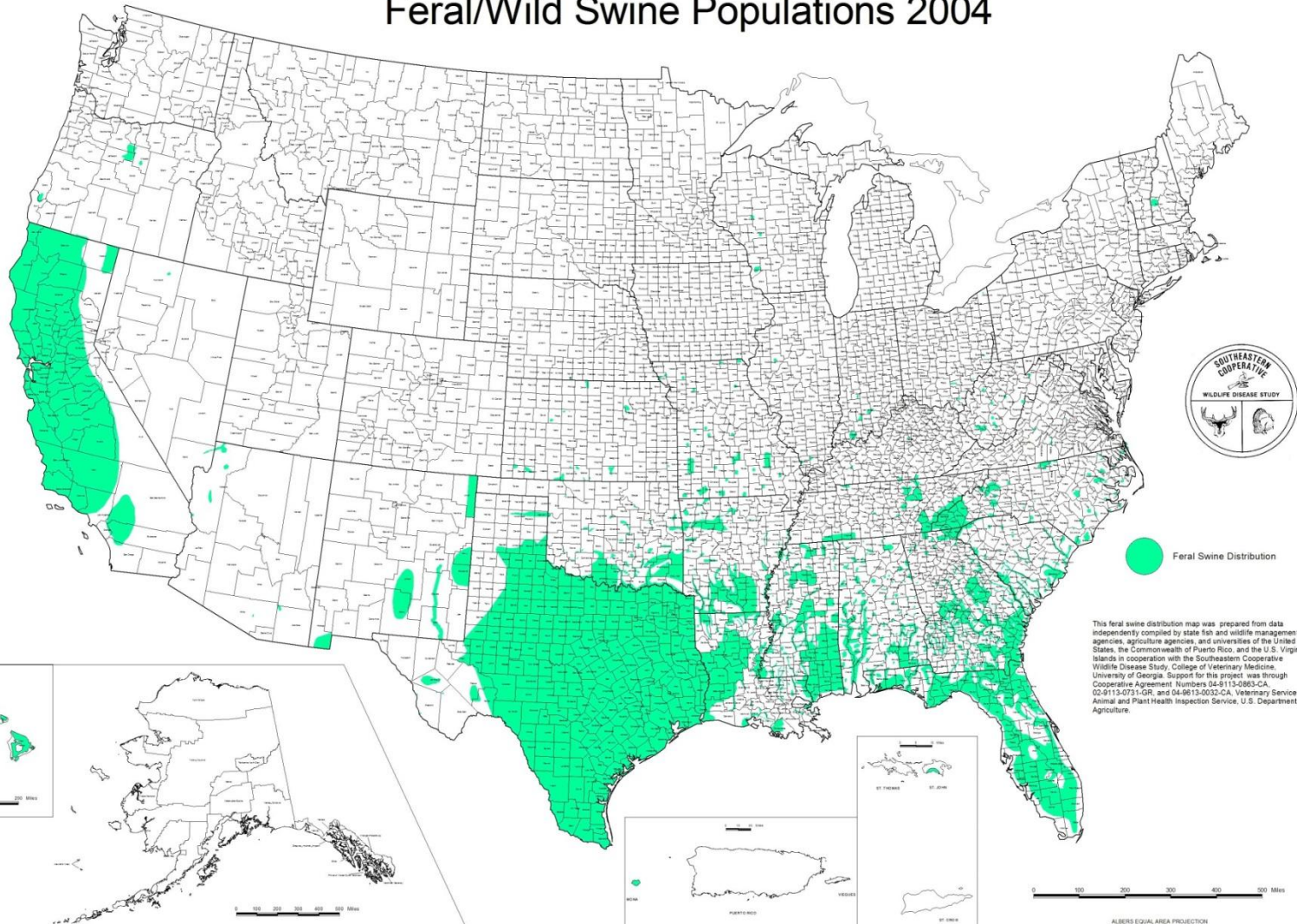
- More Than 10 Swine Per Square Mile
- 10 Or Less Swine Per Square Mile
- Swine Are Rare Or Absent

THIS BIG GAME ANIMAL DISTRIBUTION MAP WAS PREPARED FROM DATA COMPILED BY FISH AND WILDLIFE AGENCIES OF THE FIFTY STATES, COMMONWEALTH OF PUERTO RICO, AND THE U.S. VIRGIN ISLANDS. SUPPORT FOR THIS JOINT-STATE PROJECT WAS THROUGH COOPERATIVE AGREEMENT NUMBER 12-16-5-2230, EMERGENCY PROGRAMS, VETERINARY SERVICES, ANIMAL AND PLANT HEALTH INSPECTION SERVICE, U.S. DEPARTMENT OF AGRICULTURE.



0 100 200 300 400 500 MILES
ALBERS EQUAL AREA PROJECTION - STANDARD PARALLELS 29° AND 45°

Feral/Wild Swine Populations 2004

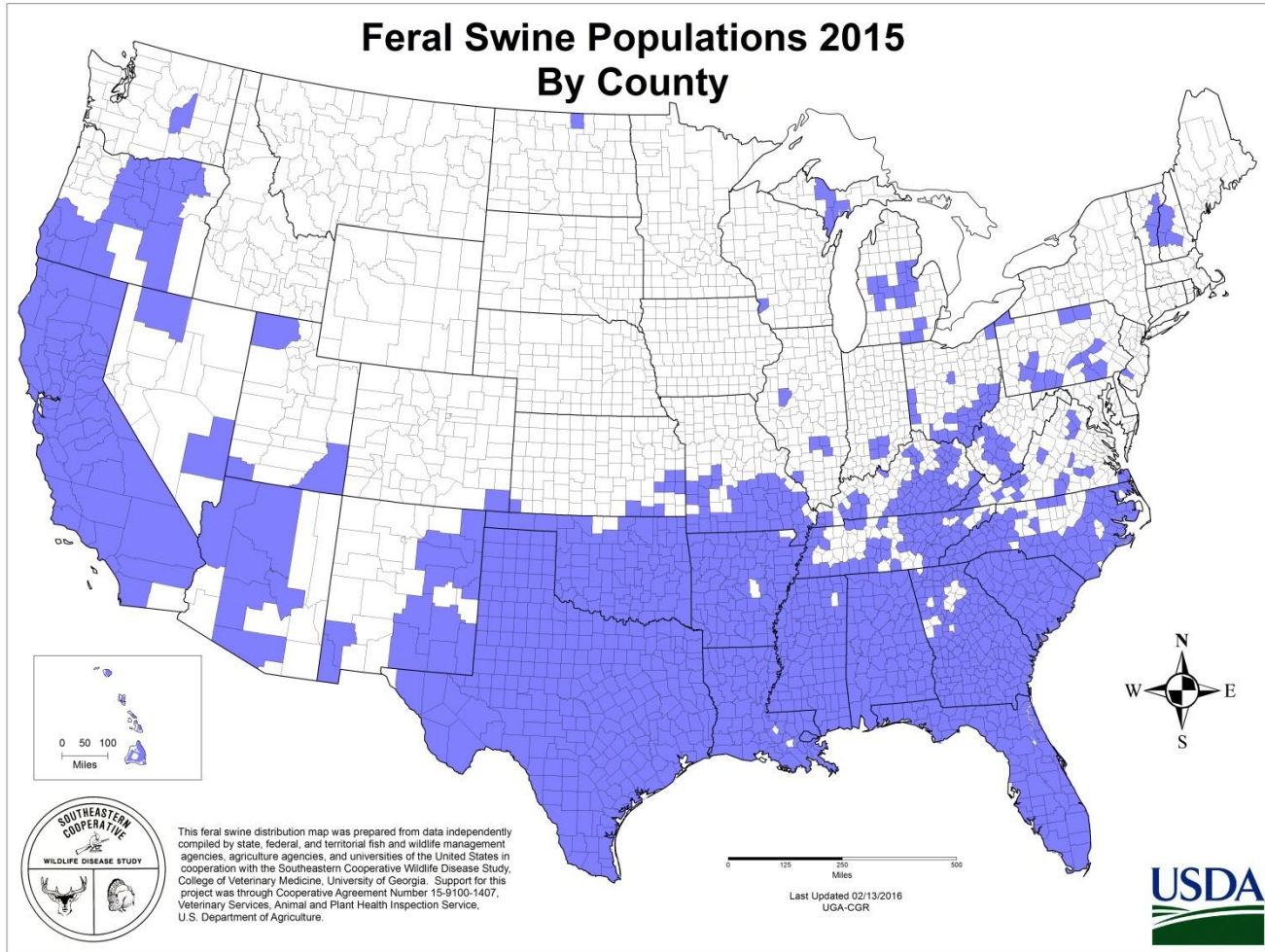


Feral Swine Distribution

This feral swine distribution map was prepared from data independently compiled by state fish and wildlife management agencies, agriculture agencies, and universities of the United States, the Commonwealth of Puerto Rico, and the U.S. Virgin Islands in cooperation with the Southeastern Cooperative Wildlife Disease Study, College of Veterinary Medicine, University of Georgia. Support for this project was through Cooperative Agreement Numbers 04-9113-0863-CA, 02-9113-0731-GR, and 04-9613-0032-CA, Veterinary Services, Animal and Plant Health Inspection Service, U.S. Department of Agriculture.

0 100 200 300 400 500 Miles
ALBERS EQUAL AREA PROJECTION

Feral Swine Populations 2015 By County



AGFC Control Efforts:

- AGFC Removals

- 2785 hogs removed (2016 YTD)
- 2355 hogs removed (2015)

– Trapping Totals:	<u>2015</u>	<u>2016</u>
• WMAs	2028 (72%)	1297 (46.6%)
• Private Property	227 (10%)	1301 (46.7%)
• Other methods	18%	7%

AGFC Control Efforts:

- Trapping Efficiency

<u>Fiscal Year</u>	<u>Manhours/Hog</u>
• 2014	8.7
• 2015	6.6
• 2016	5.4
• 2017	2.4

Moving Forward

- Maintain and increase public land control efforts
- Multi-agency collaboration
- Intensify outreach and control efforts on private lands
- Increase enforcement of existing laws and regulations
 - Maintain strict laws regarding possession and transport