

Your U of A System Division of Agriculture



UofA DIVISION OF AGRICULTURE
RESEARCH & EXTENSION
University of Arkansas System

I CARE.
We Serve.



Agriculture in Arkansas

- Adds **\$20 billion** to the Arkansas economy
- Is responsible for **1 in every 6 jobs**
- Contributes **18%** of the gross state product of the Arkansas economy, not counting retail food markets
- Agriculture's share of the state's economy is greater than in any of the neighboring states

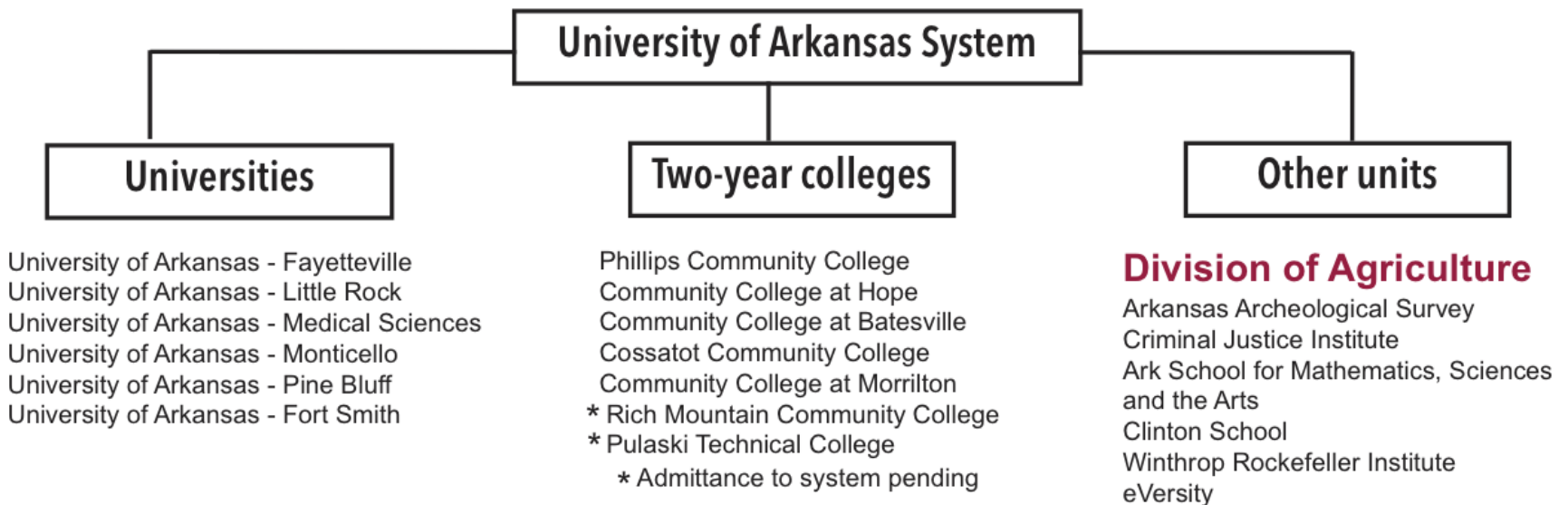


Who We Are

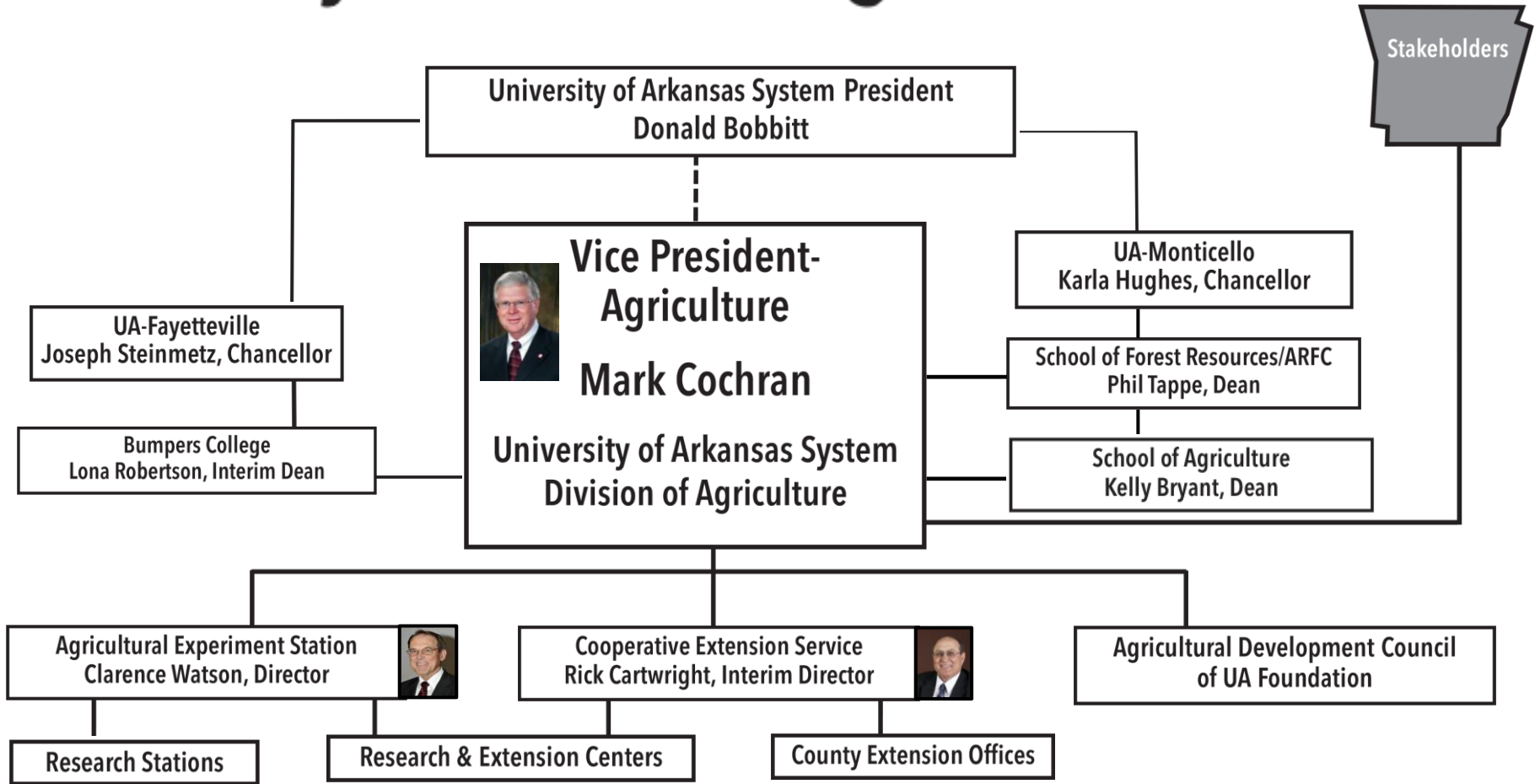
- Cooperative Extension Service
<http://www.uaex.edu>
- Agricultural Experiment Station
<http://aaes.uark.edu>
- Independent land grant institution within the UA System with federal-state-local cooperation
- Emphasize basic to applied research and technology adoption
- An impartial source of science-based solutions to relevant problems



U of A System



U of A System Div of Ag Structure



UA Fund

UA Fund – Appropriation Bill

- Arkansas Research and Education Optical Network (ARE-On)
- UA System Office
- Arkansas Archeological Survey
- **Division of Agriculture**
- Arkansas School for Mathematics, Sciences and the Arts
- Clinton School of Public Service
- Criminal Justice Institute

UAF – Appropriation Bill

- UA-Fayetteville
- UA Research and Technology Park
- Garvan Woodland Gardens
- Arkansas World Trade Center
- UA Arkansas Centers for Rural Education in Autism and Related disabilities
- UA Pryor Center for Arkansas Oral and Visual History



No Tuition

- The Division is a non-formula institution that must have its budget “justified” every year – starting with the recommendation of ADHE.
- State, federal and local partnership.
- Since we have no degree college students, we have no tuition revenue.
- UA Fayetteville is the only formula-funded entity in the UA Fund; all the rest are justification-based, non-formula institutions/units.



What we do and how we do it

- 1 - Agricultural production and processing
- 2 - Environment and energy
- 3 - Safe and nutritious food
- 4 - Families and youth
- 5 - Economic and community development.



- We come to you - wherever our stakeholders live and learn
- We have about 1,200 employees and thousands of volunteers in all 75 counties.
- We reach more Arkansans on a daily basis than any other institution of higher education



Cooperative Extension Service

- Agriculture and Natural Resources
- Family and Consumer Sciences
- 4-H Youth Development
- Community and Economic Development



Cooperative Extension Service

Agriculture and Natural Resources (ANR)

Integrated Pest Management

Ask the Pest Crew
 Insect Management
 Pollinator Health and Neonicotinoids
 New Invasive Insects
 Plant Disease Management
 Plant Health Clinic
 Plant Nematology Laboratory
 Pesticide Training and Education
 Weed Management
 Herbicide Resistance
 Application Technology
 Flag the Technology
 Zero Tolerance (Palmer Amaranth)

Economics and Marketing

Farm Planning
 Food & Farm Policy
 Markets & Market Maker
 Sustainability
 USDA Reports
 Farm Bill
 So. Risk Management Educ. Center

Animals and Forages

Beef Cattle
 Dairy Cattle
 Horses
 Pastures and Forages
 Poultry
 Backyard Poultry
 Sheep and Goats
 Manure and Mortality Management
 Rabbits
 Other Livestock

Row Crops

Corn Production
 Cotton Production
 Edamame Production
 Grain Sorghum Production
 Peanut Production
 Rice Production
 Soil Fertility and Quality
 Soybean Production

Verification Programs
 Wheat Production
Commercial Horticulture
 Fruits and Nuts
 The Learning Farm
 Ornamentals
 GAP (Good Agricultural Practices)
 Vegetables

Ag Technology

Calculators and Apps
 Geospatial Technologies in Ag
 Special Software
 Flag the Technology

Special Farming Programs for Arkansas

Agritourism
 Aquaculture (UAPB)
 Apiculture
 Farm Safety
 Livestock and Poultry Biosecurity

Arkansas Home Landscapes & Gardening

Arkansas Master Gardener Program
 Annuals and Perennials
 Plant of the Week
 Shrubs
 Vines and Groundcovers
 Houseplants
 Pruning
 Trees
 Lawns in Arkansas
 Vegetable Gardening
 Community Gardens
 Compost Education
 Garden Vegetable Production A-Z
 Home Garden Fruits and Nuts Crops
 Berries
 Fruit Trees
 Grapes
 Pecans
 In the Garden
 Butterfly Gardens
 Herbs
 Native Plants

Environment and Nature

Reference Desk
 Junior Master Gardener
 Garden N Grow Program
 Drought Resource Center
 Drought Effects
 Flood Impacts
 Salvaging Timber
 Storm Damage to Trees
 CFE for Registered Foresters
 Urban Foresters
 Wildlife Professional Training
 Water Conservation
 Irrigation
 Computerized Poly-Pipe Hole Selection
 Pumping Plant Efficiency
 Irrigation Technology
 Water Quality
 Forest BMPs
 Nutrient Applicator Education
 Water Quality Policy
 Discovery Farms
 Stormwater Education
 Water Sustainability
 Air Quality Standards
 Controlling Emissions
 Smoke Management
 Community Forestry
 Forest Health
 Managing your Woodlands
 Marketing Timber Reports
 Timber Price Report
 Women Owning Woodlands
 Managing Wildlife Habitat
 Backyard Wildlife Habitat
 Wildlife Enterprises
 Native Plants for Wildlife
 Dealing with Wildlife
 Feral Hog Control
 Arkansas Invasives
 Emerald Ash Borer Education



Cooperative Extension Service

Community and Economic Development (CED)

Business and Communities

Community Leadership
LeadAR
Breakthrough Solutions
Stronger Economies Together (SET)
Socio-Economic & Demographic Profiles
Business Assistance
Tax Schools
Food Entrepreneurship
Arkansas Procurement Assistance Center (APAC)
Economic Development (Impacts, Trends, Opportunities)
Arkansas Voter Education
Ballot Issues
Energy Policy
Environmental Policy
Local Official Training
Public Policy Center
Arkansas Watersheds
SAM assistance for farmers
Arkansas Nonprofits
Arkansas Food Industry Assistance

Family and Consumer Sciences (FCS)

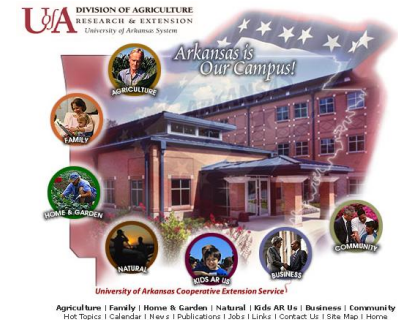
Health and Living

Snap-Ed
Diabetes Education
Healthy Weight
Eating Well
Nutrition Guidelines
Nutrition for Youth
Food Preservation
Food Handling
Emergency Preparedness
ServSafe
Disease Prevention and Management
Fitness
Safety

Extension Wellness Ambassador Program
Basic Money Management
All About Credit
Saving and Investing
Personal Well-Being
Couple Relationships
Parenting
The Best Care
Best Care Connected
Guiding Children Successfully
Healthy Aging
Aging in Place
Keys to Successful Aging
Arkansas Extension Homemakers

Arkansas 4-H and Youth

4-H Science
Healthy Living for Youth
Citizenship and Leadership
4-H Military Programs
4-H Afterschool
4-H Camps
ATV Safety
Animal Science Youth Programs
Poultry Science Youth Programs
Arkansas Outdoor School
Competitive Events
ExCEL Leadership
Forestry Youth Programs
SEEK
Shooting Sports
WHEP



Agriculture | Family | Home & Garden | Natural | Kids AR Us | Business | Community
Hot Topics | Calendar | News | Publications | Jobs | Links | Contact Us | Site Map | Home

U of A DIVISION OF AGRICULTURE
RESEARCH & EXTENSION
University of Arkansas System



Cooperative Extension Service

In Fiscal Year 15, Extension served:

- 495,849 children and youth
- 341,873 farmers and consultants
- 341,595 nutrition program participants
- 151,517 4-H program participants
- 17,845 forestry/natural resources clients
- 16,652 community leaders
- 15,892 childcare providers
- 12,199 pesticide applicators
- 4,412 Extension Homemakers Club members
- 3,200 Master Gardeners
- 460 food service industry workers attended a ServSafe class



Agricultural Experiment Station

- AAES is the primary research support agency for Arkansas farmers and ranchers, food processors, related industries and consumers
- AAES research discoveries allow Arkansas farmers, businesses, communities and families to adopt new tech and products and adapt to regulatory changes
- AAES research personnel maintain partnerships with state, federal and international agencies and professional societies that connect us to global communities of scientists.



Unique Cycle of Life

- Traditional university research discovery – the end user may be anyone in the world, and often is.
- Division of Agriculture research – lab science (basic & applied) is taken to the field; field research leads to products/best practice recommendations; these are taken directly to the stakeholder.
- Division research tends to be more applied research and our users tend to be Arkansans.



Where We Are

81

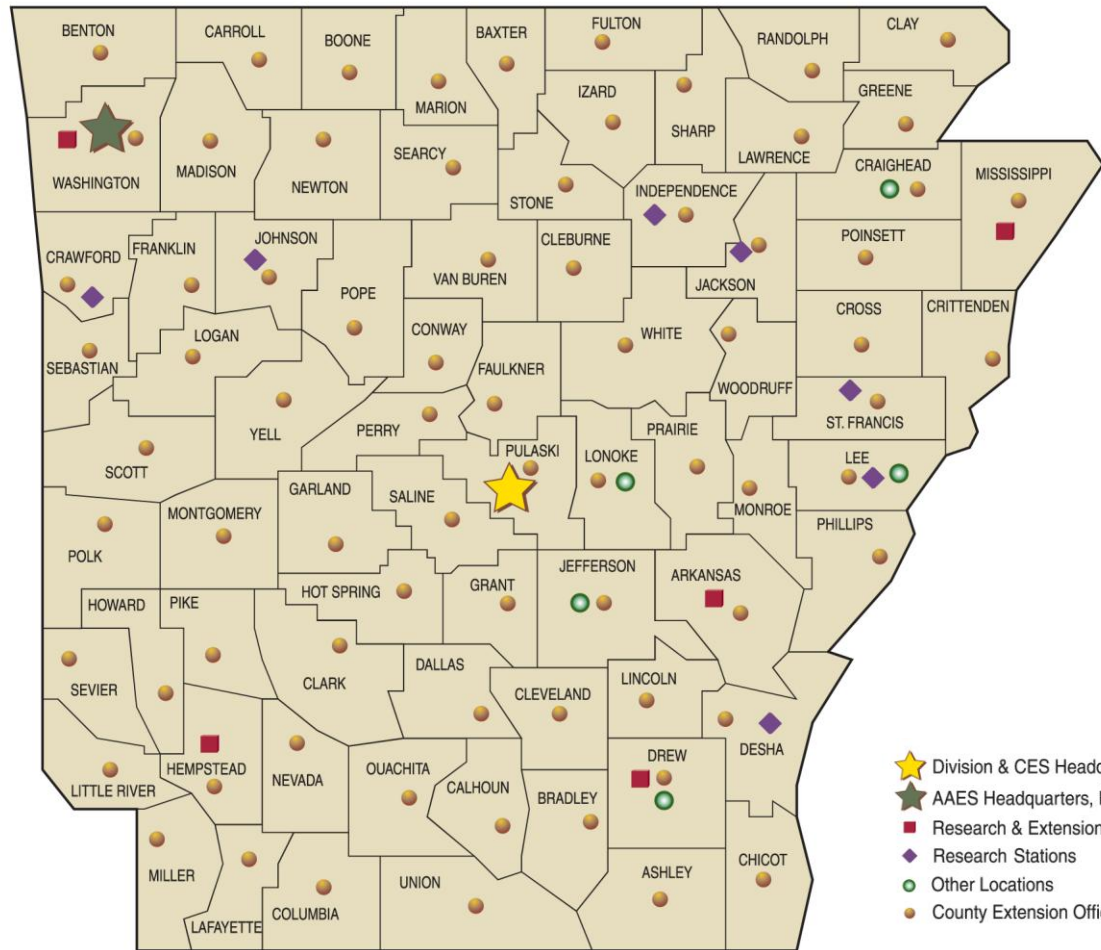
Offices in 75 counties

15

Research centers

5

University campuses



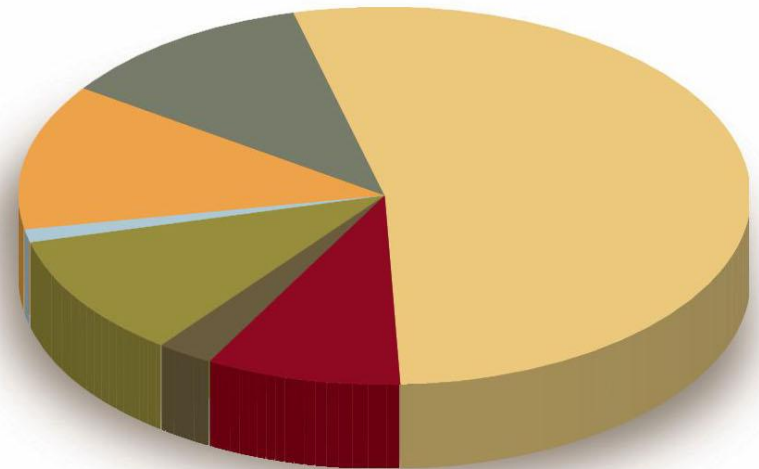
Returns on Public Investment

- 35 national studies estimate the rate of return to be 45% to 53%
- \$1 invested today will return 50 cents annually for decades
- National studies show benefit/cost ratio of 18:1

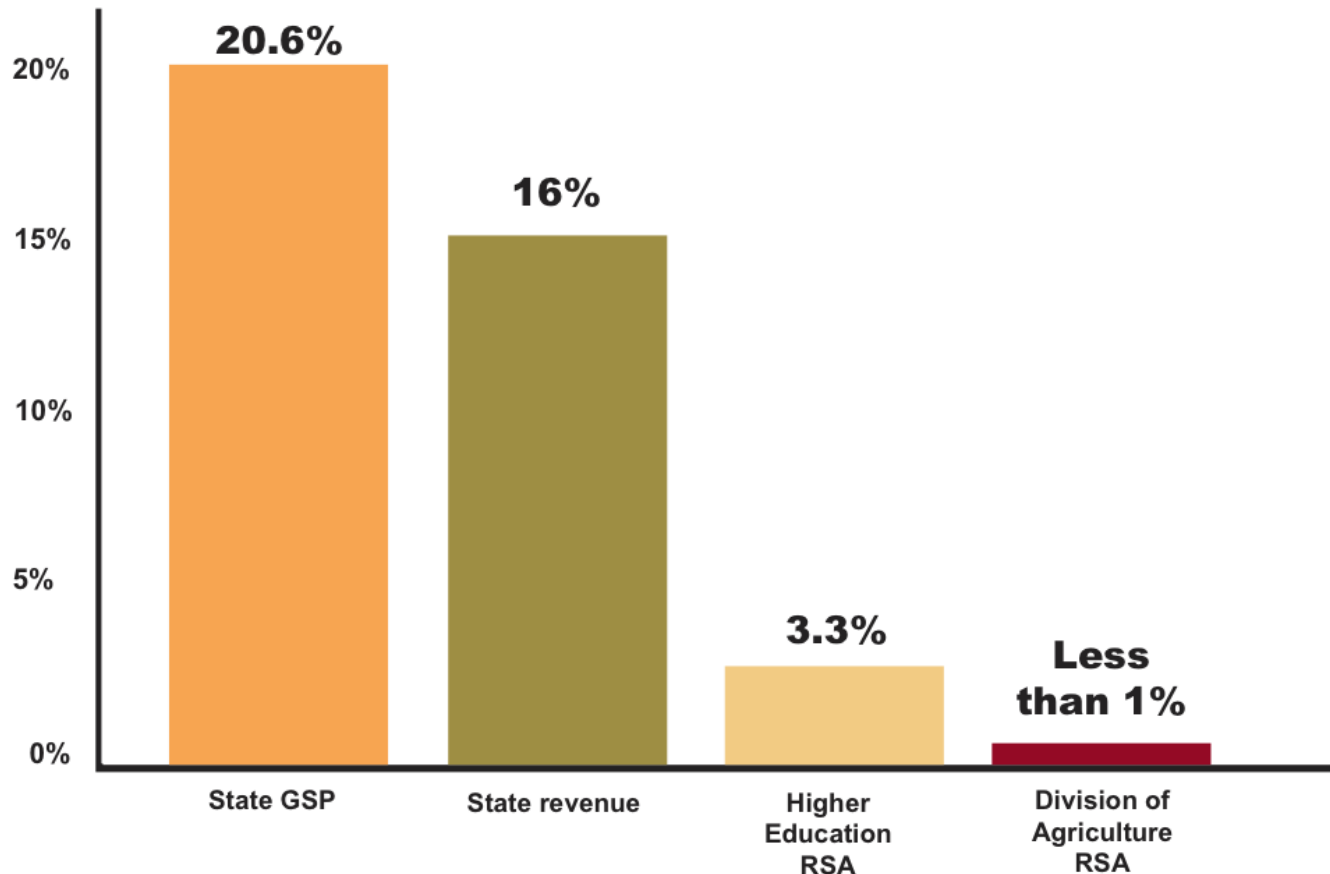


Division Funding Sources

■ State Appropriations	53.5%
■ Federal Appropriations	8.5%
■ County Appropriations	2.6%
■ Federal Grants & Contracts . . .	10.5%
■ State Grants & Contracts	1.2%
■ Private Grants & Contracts	12.3%
■ Sales, Fees, Royalties & Other . .	11.3%



Percent Change in Funding, 2008-16



UofA

DIVISION OF AGRICULTURE --- **RESEARCH & EXTENSION**

University of Arkansas System

