

Arkansas State Parks



Joint City, County and Local Affairs Committee
August 26, 2015



Arkansas State Parks



The state parks are natural and historic treasures that belong to each and every Arkansan...

native and newcomer, those of us who regularly visit the parks, and those who have never stepped foot in one.

Simply put, Arkansas's state parks are "your" state parks.

Cedar Falls,
Petit Jean State Park



Arkansas State Parks



Lake Ouachita State Park

The parks are an integral part of the quality of life we enjoy here in Arkansas —
The Natural State.



Arkansas State Parks



DeGray Lake Resort State Park

The economic impact of the state parks is felt throughout the state.



Arkansas State Parks



Devil's Den State Park

In perpetuity...
The parks are in the “forever” business of helping to protect Arkansas’s natural and cultural heritage.



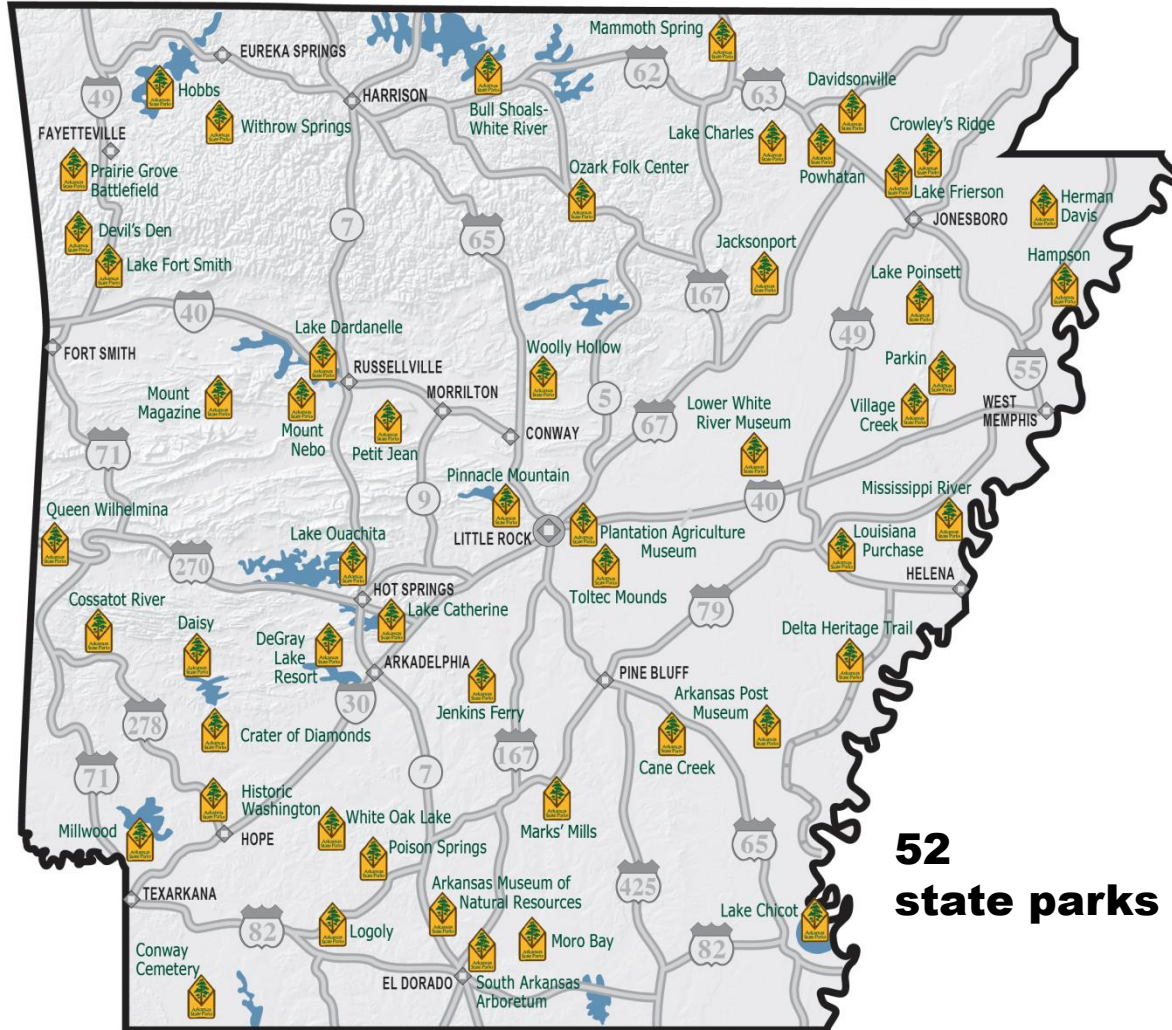
Making memories for park visitors since 1933



Arkansas State Parks Mission



Arkansas State Parks



Facilities to experience



Activities to enjoy



Programs to enrich



Children who have experiences in nature are better students and make better citizens. The natural world is a world of wonder, and we manage over 54,000 acres.



State parks are like operating small cities.



- Infrastructure (buildings and roads)
- Planning and Design
- Water Treatment
- Wastewater Management
- Hotel and Restaurant Management
- Retail Sales
- Swimming Pool Operations
- Golf Course Management
- Marina Management
- Maintenance
- Law Enforcement
- Emergency Services
- Education Programs
- Historic Preservation
- Management
- Fiscal operations
- Human Resources



Park Management Triangle



What Makes Up the Arkansas State Park System?

- 52 parks with over 54,400 acres
- 1,147 buildings insured at \$392 million; 180 are historic buildings
- 16 sites are listed on the National Register of Historic Places
- Six sites have been designated as National Historic Landmarks and one site is a National Natural Landmark
- 31 state parks with camping totaling 1,746 campsites, 1,050 picnic sites at 46 park locations, and 208 cabins at 11 park locations
- 218 guest rooms at four park lodges, eight restaurants, and 10 marinas
- 143 trails covering over 409 miles



and...

- Over 191 miles of roads
- 19 waste water treatment plants and over 55 miles of distribution lines
- 811,000 square yards of parking lot surface
- Over eight million park visitors in CY 14 impacted Arkansas's economy by over \$225 million
- 11,485 volunteers in CY 14 contributed 116,559 hours valued at \$2,643,527
- Over 42,367 education programs, activities and special events





Today, Arkansas State Parks is among the finest systems of parks and museums in the nation. To understand the evolution of our state parks' legacy, where we are today and where we are headed, we need to look back in our history.



A look back at history



Dr. T. W. Hardison



A look back at history

1923 -



Act 276 of 1923 authorizes the commissioner of State Lands to accept land donations for state parks and reservations. The area around Cedar Falls is acquired, and the park system is born.



A look back at history

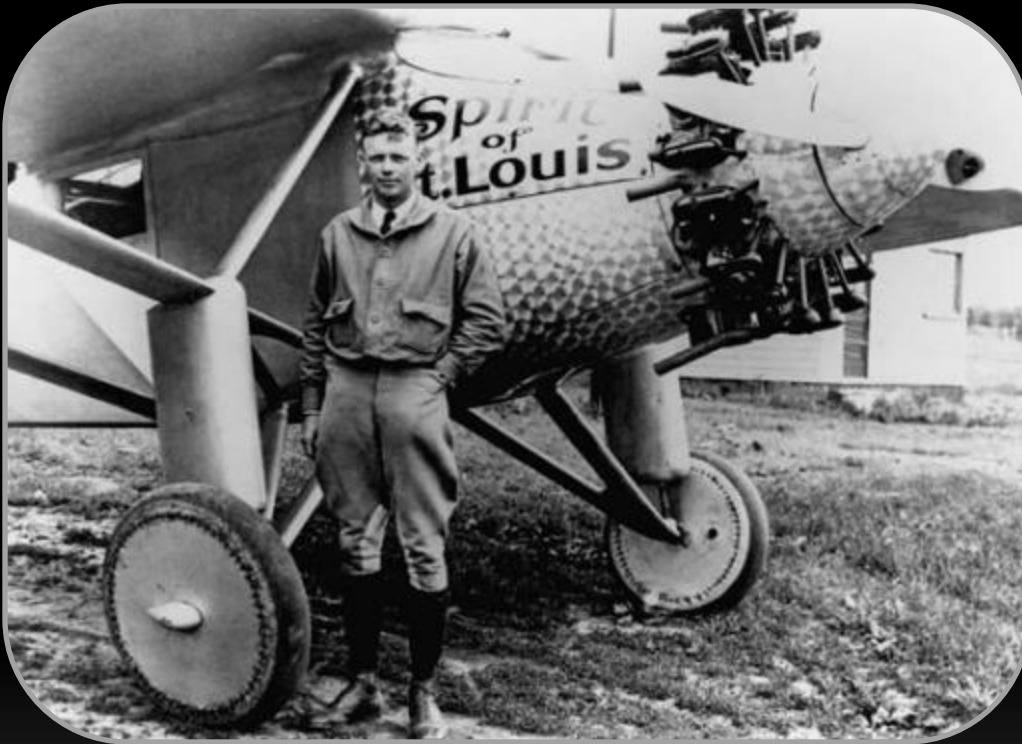
1927 -



The Flood of '27, the disastrous lower Mississippi Valley flood, sets a new benchmark to which all later floods will be compared.



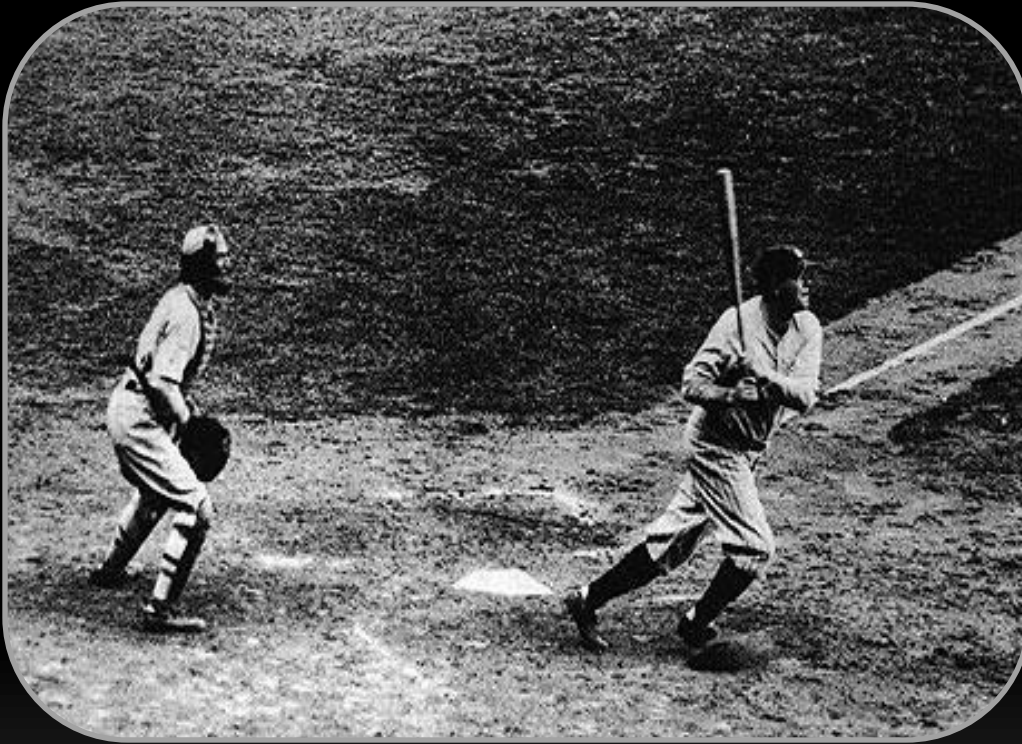
1927 -



**Charles Lindbergh
completes his first
solo, non-stop flight
across the Atlantic.**



1927 -



Babe Ruth hit his 60th homerun of the season off Tom Zachary in Yankee Stadium, breaking his own Major League Baseball record.



1927 -



Act 172 of 1927



Act 172 of 1927 -

... to **protect** and **preserve** in its original habitat and native beauty the flora, fauna, and wildlife therein and preserve the same for all **future generations**, thereby promoting **health** and **pleasure** through recreational places, resorts and scenic playgrounds for the people of the State and to **attract visitors, homeseekers and tourists** to the State and to provide places of **recreation** and pleasure for them, and to increase the **wealth** and **revenue** of our State by means of such parks.



Then...Act 57 of 1929 -

The purpose of this Act is hereby declared to be, by reason of the **historical interest** in Arkansas Post, the preservation of things historical, to protect, build, and rebuild, maintain, and beautify this famous historic **spot for future generations**, thereby promotion health and pleasure providing a recreation place, resort, and playground for the people of the State and to attract visitors and tourists to the State.



1933 -



**Construction of the
Golden Gate Bridge
begins.**



1933 -



**Repeal of the
18th Amendment
ends Prohibition.**



1933 -



**FDR creates the
Civilian Conservation
Corps (CCC) as part
of the New Deal.**



The first state park development began in 1933 through the craftsmanship and conservation achievements of the Civilian Conservation Corps (CCC).



Petit Jean State Park



Petit Jean State Park



Crowley's Ridge State Park



Arkansas's First Six State Parks

Petit Jean



Mount Nebo



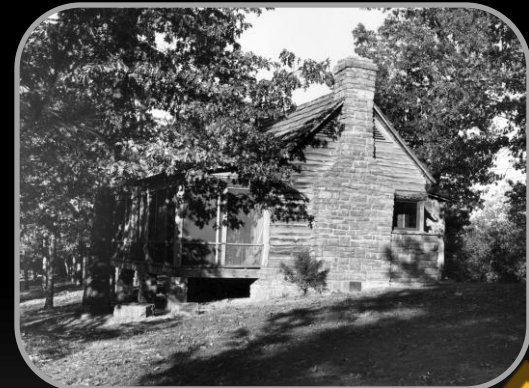
Crowley's Ridge



Devil's Den



Lake Catherine



Buffalo River



Then came...Act 170 of 1937 -

Section 10: The term “park,” as used in this Act, shall be construed to signify and embrace any area within the State which, by reason of location, natural features, scenic beauty or historical interest, possesses distinctive physical, aesthetic, intellectual, creative, and social values.



...and more parks -

Twenty parks were added to the state park system during the '50s and '60s

Daisy, Bull Shoals-White River, Lake Ouachita, Queen Wilhelmina, Lake Chicot, Hampson Archeological Museum, Herman Davis, Davidsonville Historic, Poison Springs Battleground, Withrow Springs, Marks' Mills Battleground, Lake Poinsett, Lake Charles, Jenkins Ferry Battleground, Jacksonport, White Oak Lake, Mammoth Spring, Lake Dardanelle, Lake Fort Smith, and the Ozark Folk Center



1971 -



Governor Dale Bumpers takes office. And the park system embarks on the greatest expansion program in its history.



During the '70s, more parks joined the system

Seventeen parks were added to the state park system from 1971 through 1979

Moro Bay, Prairie Grove Battlefield, DeGray Lake Resort, Village Creek, Crater of Diamonds, Historic Washington, Woolly Hollow, Pinnacle Mountain, Powhatan Historic, Toltec Mounds Archeological, Logoly, Lake Frierson, Millwood, Louisiana Purchase, Cane Creek, Hobbs, and Mississippi River



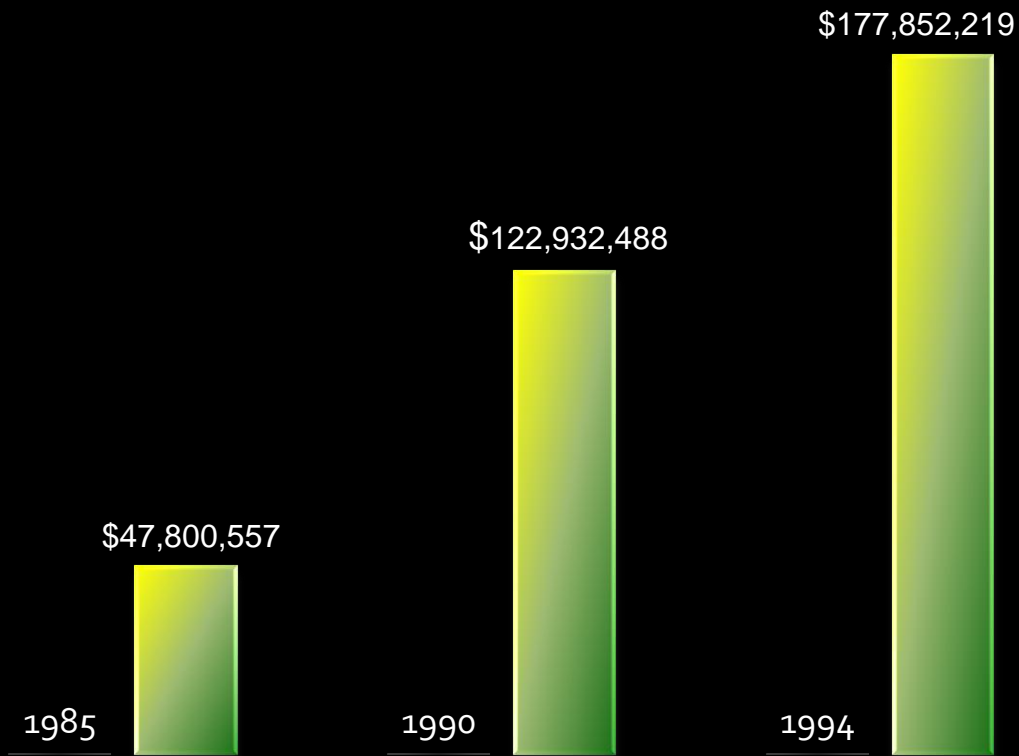
1980s & 1990s -



Funding issues



1980s & 90s -



**Funding
needs**



1996 -



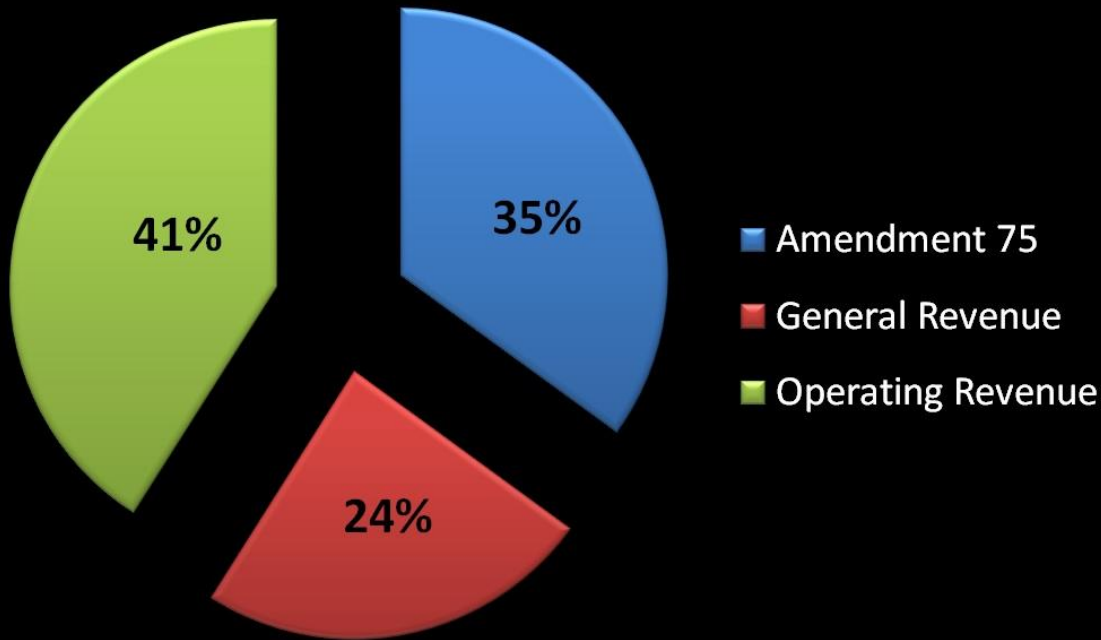
Amendment 75



Save it for the Kids



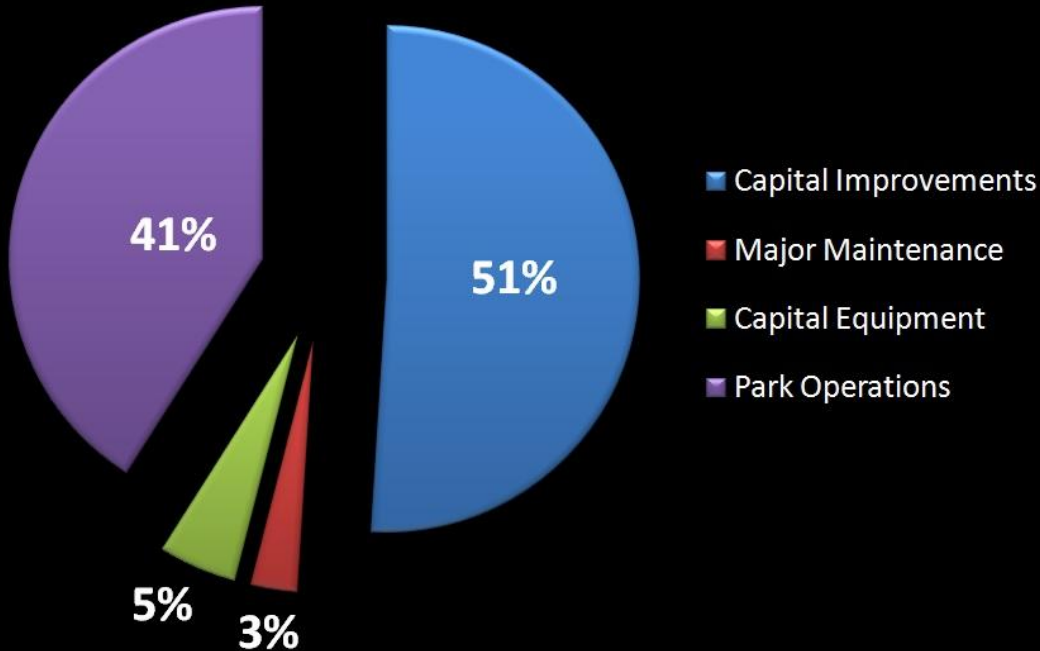
ARKANSAS STATE PARKS OPERATING BUDGET



**Arkansas State
Parks funding
sources**



How is Amendment 75 money spent?



Amendment 75 Spending



Where is Amendment 75 spent?

- **System-wide utility systems replacements, road and parking improvements**
- **Swimming pool replacements/additions:** Crater of Diamonds, Devil's Den, Lake Chicot, Mount Nebo, Petit Jean
- **Campground renovations/additions:** Bull Shoals-White River, Cossatot River, Daisy, Delta Heritage Trail, Devil's Den, Jacksonport, Lake Catherine, Lake Charles, Lake Chicot, Lake Dardanelle, Lake Ouachita, Lake Poinsett, Millwood, Mississippi River, Moro Bay, Petit Jean, Village Creek, White Oak Lake, Withrow Springs, Woolly Hollow
- **Lodge renovations:** DeGray, Petit Jean, Queen Wilhelmina
- **Cabin renovations/additions:** Devil's Den, Lake Catherine, Lake Chicot, Lake Fort Smith, Lake Ouachita, Moro Bay, Mount Nebo, Ozark Folk Center, Petit Jean, Village Creek



- **Historic structure renovations:** Crowley's Ridge, Devil's Den, Historic Washington, Jacksonport, Mount Nebo, Petit Jean, Powhatan
- **Golf course renovation:** DeGray
- **Marina improvements:** Bull Shoals-White River, DeGray, Lake Catherine, Lake Chicot, Lake Ouachita, Moro Bay
- **Relocation of Lake Fort Smith State Park**
- **Day-use area renovations:** Bull Shoals-White River, Cossatot River, Crater of Diamonds, Davidsonville, DeGray, Delta Heritage Trail, Daisy, Lake Catherine, Lake Charles, Lake Chicot, Lake Frierson, Lake Ouachita, Mammoth Spring, Millwood, Moro Bay, Parkin, Pinnacle Mountain, Poison Springs, Prairie Grove, Queen Wilhelmina, White Oak Lake



- **Shoreline stabilization:** Bull-Shoals-White River, Jacksonport, Lake Chicot, Millwood, Moro Bay
- **Barrier-free and multi-use trails:** Bull Shoals-White River, Crater of Diamonds, Delta Heritage Trail, Hobbs, Petit Jean, Village Creek
- **Visitor Centers:** Bull Shoals-White River, Cossatot River, Hobbs, Lake Dardanelle, Lake Fort Smith, Mississippi River
- **Interpretive exhibits/galleries:** Arkansas Museum of Natural Resources, Bull Shoals-White River, Crater of Diamonds, Cossatot River, Crowley's Ridge, Hobbs, Lake Dardanelle, Lake Frierson, Lower White River Museum, Plantation Agriculture Museum



What types of parks do we have?



Pinnacle Mountain State Park



What types of parks do we have?



Jacksonport State Park



What types of parks do we have?



Lake Poinsett State Park



What types of parks do we have?



Arkansas Museum of Natural Resources



What types of parks do we have?

Arboretum



South Arkansas Arboretum



Just a few of the projects completed with Amendment 75

Natural Resource Parks



\$4,500,000 visitor center
Hobbs State Park-Conservation Area



Natural Resource Parks



\$2,951,727 visitor center
Cossatot River State Park-Natural Area



Recreation Parks



\$910,996
swimming
pool facility –
Lake Chicot
State Park



Museum Parks



\$542,078
conservation of gin
equipment &
exhibits for the
reconstructed
Dortch Cotton Gin –
Plantation
Agriculture Museum



Historic & Cultural Parks



\$1,805,348
renovation of
1940 WPA
Gym & 1874
Courthouse –
Historic
Washington
State Park



Arkansas State Parks Campground Renovations

The state park system includes 1,746 campsites.

That's **17 percent of the public campsites in Arkansas.**

Amendment 75 has funded significant upgrades in the park campgrounds. Campers can choose from a walk-in tent site; a campsite with full hookups for electric, water, and sewer; and sites in between. Campsite spurs have been lengthened and widened to accommodate larger RV's, and 50-amp electric service is being added to more sites. A modern bathhouse with hot showers is usually steps away from each campsite. Campgrounds include barrier-free sites for visitors with disabilities. Group camping areas are available. Rent-A-Camp, Rent-A-Yurt, and Rent-An-RV are offered at several parks. And new rentals are on the horizon—camper cabins.



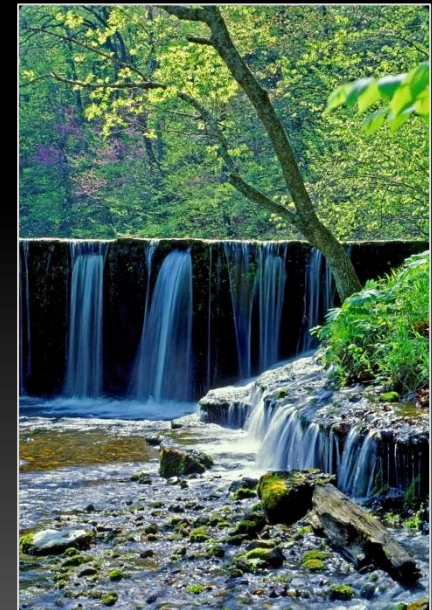
Millwood State Park Campground Renovations

Construction is underway on the renovation of Campground Areas “A” and “B” which will include the upgrade of Class B sites to Class AAA sites. This construction is planned for completion in winter 2015.



Withrow Springs State Park Walk-in Tent Sites

Construction will begin in fall 2015 on new walk-in tent sites, plus a restroom facility to serve these campsites. They will be near the park’s new 30 Class AAA campsites.



Petit Jean State Park Rent-A-Yurts

The park replaced its Rent-A-Tepee and Rent-A-Camp rentals with Rent-A-Yurt. Campers can choose from four Rent-A-Yurt along the shore of 100-acre Lake Bailey.



Each sleeps up to six persons. \$55/night; Deposit: \$55

Arkansas Women Bloggers enjoying “Glamping” (luxury camping) at a Petit Jean yurt this summer.

Devil's Den State Park Campground Renovations and New Camper Cabins

Campground Areas "B" and "D" are undergoing renovation that began spring 2015. Area "B" enhancements will include construction of six camper cabins.



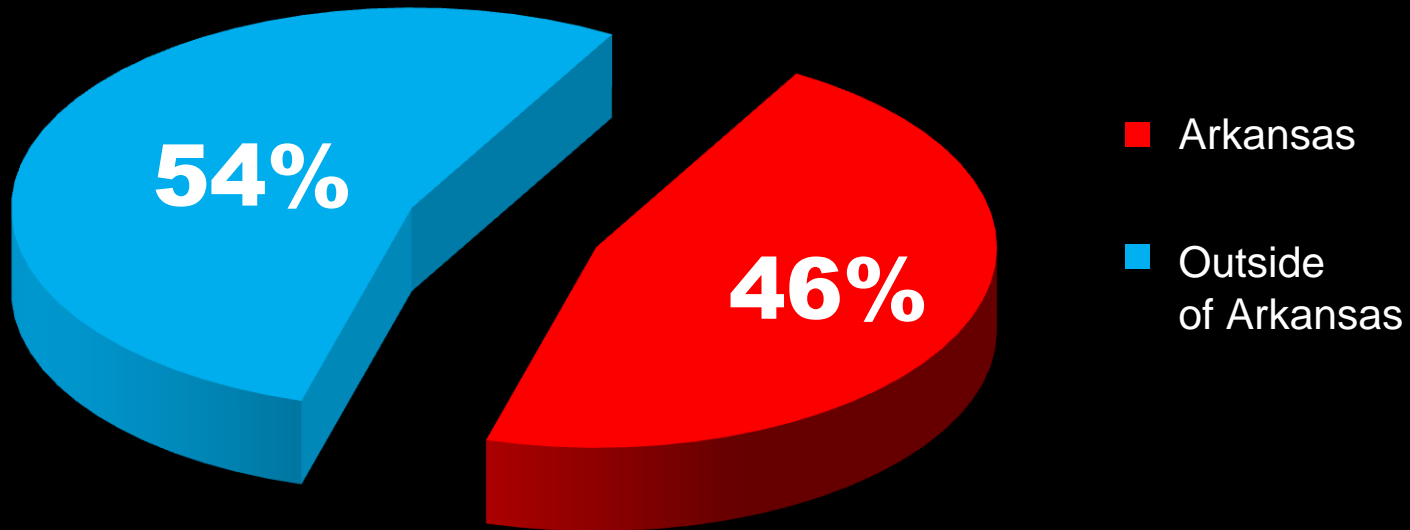
The Economic Impact of Arkansas State Parks

\$225,000,000

throughout Arkansas from visitors to
Arkansas's state parks



The majority of overnight stays come from out-of-state visitors



Lodges, Cabins & Camping



The Economic Impact of Arkansas State Parks

Impact from areas other than tourism

Construction
Contractors



The Economic Impact of Arkansas State Parks

Impact from areas other than tourism

Concessionaires



The Economic Impact of Arkansas State Parks

Impact from areas other than tourism

Local
staff &
family
spending



Interpretive Programs



The first park interpreters were hired in 1971.



Park interpreters create memorable experiences connecting park visitors to the parks' natural and historic resources. Over 50,159 programs and events are hosted in the parks each year.



Interpretive Programs

“Not having an interpreter in your park is like inviting someone to your home, and then disappearing.”

— William Carr



Interpretive Programs



Park interpretive programs are about connecting visitors with the resources.



Interpretive Programs



Park visitor centers also serve as education centers.



Interpretive Programs

Arkansas State Parks is the number one provider of **non-traditional, out-of-classroom school programs** in the state.

In FY 2015 your state parks presented:

- programs and special events to 864,485 park visitors
- 11,320 education programs to 324,952 participants



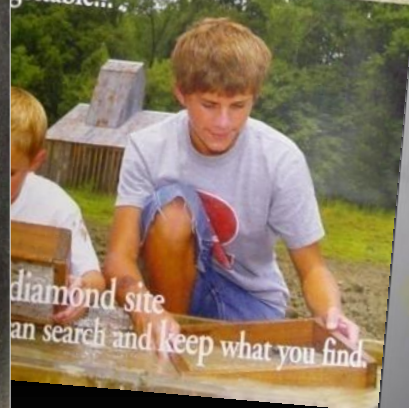
Teacher's Guide

Crater of Diamonds State Park



the Fun
the Experience
the Adventure
the Knowledge
the History
the Memories

Come search,
explore and learn...



Welcome to Crater of Diamonds State Park

The staff at Crater of Diamonds State Park would like to invite you and your students for a visit. We have a lot to offer students of any age. The park contains unique geologic formations and wonderful natural habitats. The park provides a great field trip location for classes studying Arkansas, geology, diamonds, nature, or a number of subjects. This handbook was designed to inform educators of the variety of programs we offer at Crater of Diamonds. The park interpreter is also able to perform programs not described in this handbook. If there is a topic you would like your class to learn more about, call the park to see if we have a program that would fit your needs.

Crater of Diamonds State Park's Mission

"The Crater of Diamonds State Park's mission is to preserve, protect and promote North America's only public diamond mine, its geology and history."

General Information

Park hours:

Crater of Diamonds State Park is open year round except for New Year's Day, Thanksgiving, and Christmas. The park hours are 8 a.m. to 5 p.m. daily. From Memorial Day to Labor Day we are open from 8 a.m. to 8 p.m. daily.

Location:

Crater of Diamonds State Park is located 2 miles southeast of Murfreesboro, on Arkansas highway 301. (See map for details)



Admission:

Please call park for current rates: Adults ages 13 and up; Children ages 6 - 12; Children age five and under are free. Organized groups of 15 or more may search for diamonds at one-half the regular fee. Advance notice must be given to obtain reduced group rates.



A letter to a park...

“My husband and I are educators in Texas schools. What you have are great educators who are extremely knowledgeable about nature and care about the visitors. Thank you for providing a wonderful place for learning and fun.”



The State Park Explorer Program (for ages 6-14)

State Park Explorer Pledge

I promise to love, respect, and protect all Arkansas State Parks.

I will continue to explore the history and landscape of these special places, and I will share what I discover with my friends and family.

Now and always,
Explorers show we care.



Traveling Environmental Nature Trailer (TENT)



These trailers full of camping gear are located at:

Cane Creek State Park
Lake Poinsett State Park

They are enjoyed by many groups including homeschoolers, churches, and Scouts.



Children have the right to experience nature



Monitor Elementary in Springdale



5th grade science benchmark scores were low. After a family trip to Hobbs, the principal came up with the idea to partner with the park staff in a year-long program to make science come alive.



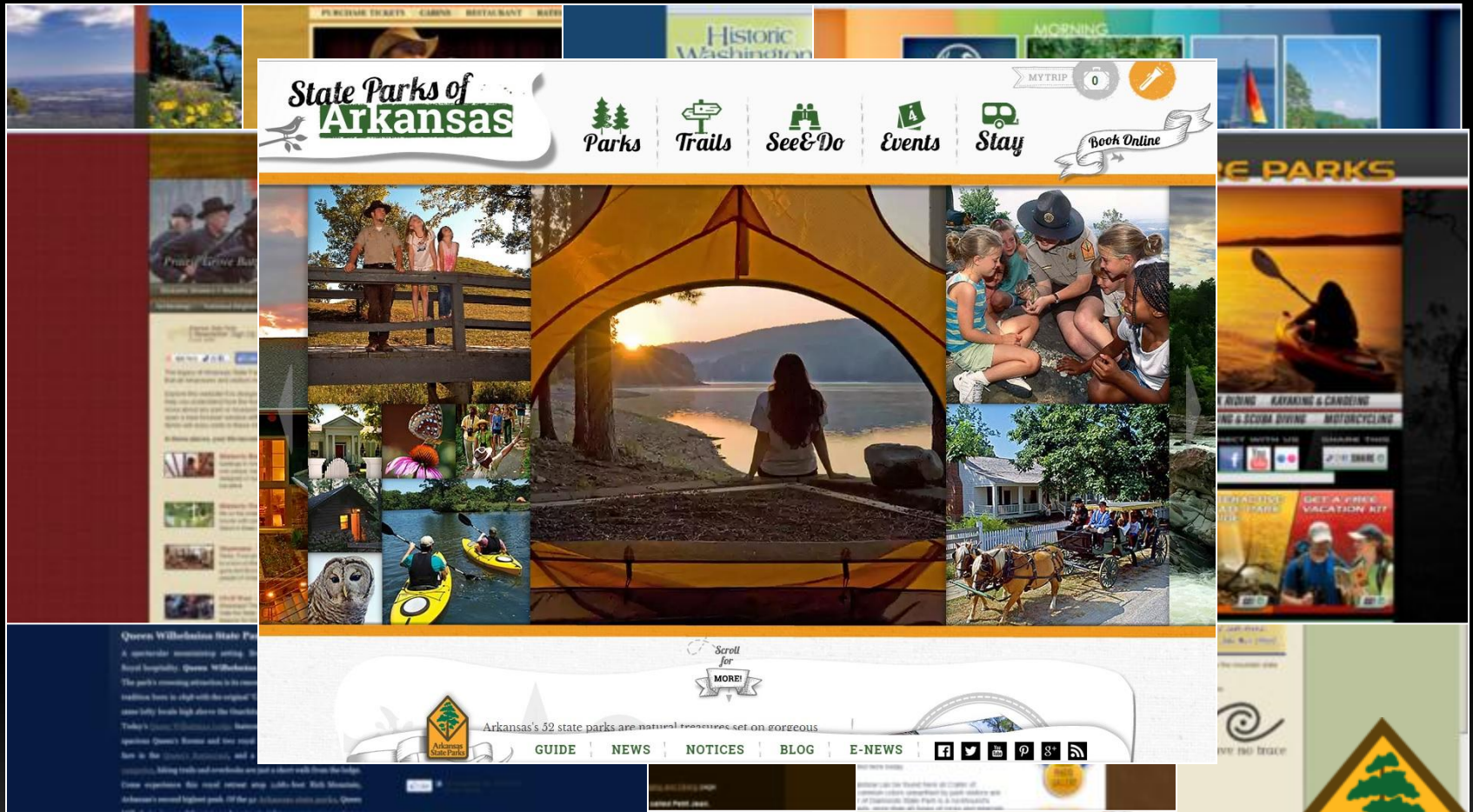
Monitor Elementary in Springdale



The 5th grade science scores raised dramatically at Monitor by 19 points. Now the school is expanding the partnership with the park to 2nd, 3rd, 4th, & 5th grades. Other area schools are now partnering, too.



12 Arkansas State Parks Websites



iPhone and Android Apps



- Quick access to park information
- Quick search based on location, type of park and trail types
- Park programs listed for the next two weeks for each park
- Quick dial from your iPhone or Android to contact the park
- Special notices letting you know of closed areas or other news concerning visitors
- Find the closest state park or state park trail to a city you will be visiting
- Maps giving you directions to the park
- Share your state park destination with your Facebook and Twitter friends
- Plan to hike a trail? Before going you can email your friends to let them know your plans



Mobile Website



Our mobile website allows users of mobile devices (phones and tablets) to easily access the major functions of the Arkansas State Parks website, including finding parks, trails, overnight accommodations, and park programs.



Connecting to Arkansas State Parks

1-888-AT-PARKS (1-888-287-2757)

www.ArkansasStateParks.com –
and 11 other State Park websites



Social Media Sites -

www.twitter.com/ARStatePark (Twitter)



www.facebook.com/StateParksOfArkansas (Facebook)



www.YouTube.com/ArkansasStateParks (You Tube)



Social Media



80,000

Facebook fans

“After taking a trip from home (AR) to NY and back, camping along the way in various states, I have to hand it to you guys—you really know how to do the State Park thing. We really have the best state parks in America. I’m really thankful that I live here.”

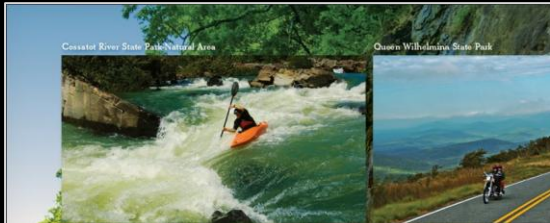
Posted by a Facebook fan from Conway, AR



Brochures



Arkansas State Parks Advertising



Our adventures

Cossatot River State Park-Natural Area
 Wickes, AR • 870-385-2201
 ArkansasStateParks.com/CossatotRiver

This state park natural area stretches 12 miles along the wild and scenic Cossatot River. Flow levels depend on rainfall. The park offers river access, trails, tent sites, fishing, and interpretive programs. The visitor center featuring exhibits is 0.5, 278 eight miles east of Wickes.

Lake Fort Smith State Park
 Mountainburg, AR • 479-369-2469
 ArkansasStateParks.com/LakeFortSmith

Nestled in a valley of the Boston Mountain Range within the Ozarks, this park offers access to the lake and the Ozark Highlands Trail. Camp, hike, backpack, picnic, and fish. Swim in the pool. Rent a fishing boat, kayak, or canoe. Stay in a park cabin. Group facilities include a dining hall and two group lodges. Southbound route: I-49 Exit 234 at Chester. Northbound route: I-49 Exit 229 at Mountainburg.

Queen Wilhelmina State Park
 Mena, AR • 479-394-2863
 QueenWilhelmina.com

Travel the Tallmenna Scenic Drive to this park atop Arkansas's second highest mountain. Enjoy panoramic views of the Ouachitas, campsites, trails, and interpretive programs. Queen Wilhelmina State Park Lodge reopens in Spring 2015 following a major renovation. Thirteen miles west of Mena on Ark. 88.

My park, your park, our parks ArkansasStateParks.com f e

IT'S NEVER TOO LATE TO TAKE YOUR CHILD FISHING
 (It's never too early, either)

There are quiet moments and something special in common. Make this time to spend time on the water and make memories to last a lifetime. Arkansas river parks offer a special time for your family. The state park system provides the opportunity to enjoy the outdoors with your family. Call for more information. Call for more information. Call for more information.

Lake Ozark State Park
 1-888-47-93863 • ArkansasStateParks.com

memories to share

Lake Ouachita State Park
 888-AT-PARKS • ArkansasStateParks.com

- Aren't you glad we've got 'em?
- Making memories
- My park, your park, our parks

MAKE THE HIGH POINT OF ARKANSAS
 the highlight of their tour.

With unsurpassed views from the bluff of Mount Magazine, this mountain lodge offers your tour group unforgettable experiences. Call for special group rates.

THE LODGE
 at Mount Magazine

One of Arkansas's four state park lodges. 877-665-6343 • MountMagazineStatePark.com



Uniformed staff



Non-uniformed staff



Volunteers



Hobbs State Park-Conservation Area



Bull Shoals-White River State Park

Volunteerism has always been an important part of the state park system's operation, and today 13 friends groups support individual state parks. The value of this volunteer support ranks Arkansas State Parks among the top five Arkansas state agencies in the receipt of volunteer support.



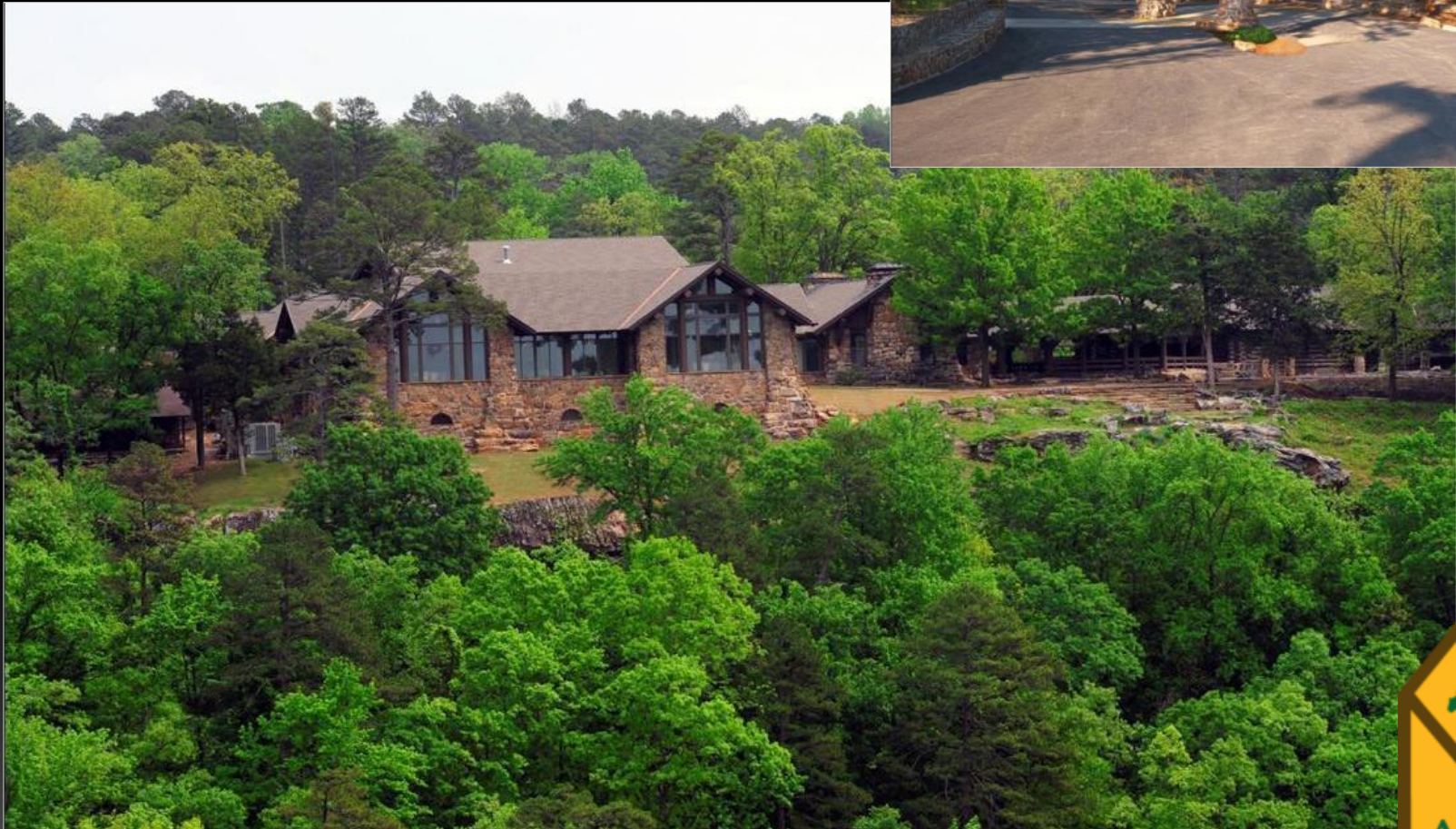
Recent and Upcoming Enhancements



Renovation of historic Mather Lodge, Petit Jean State Park



Covered
entrance



West-facing side





The view as you enter Mather Lodge





The new dining room



Renovation of Queen Wilhelmina State Park Lodge



Arkansas's
"Castle in the Clouds"
on 2,681-foot
Rich Mountain

1975 lodge





2015 Queen Wilhelmina State Park Lodge



The lodging tradition on Rich Mountain continues



1898



1963



2015



1975



Queen Wilhelmina State Park Lodge



- The \$9.6 million renovation expanded the lodge from 25,881 square feet to 37,029 square feet.
- The lodge includes a new hearth room with fireplace and a completely remodeled lobby, gift shop, and reception/registration desk.
- Two additional guest rooms increased the total to 40.
- Large windows in the public rooms and guest rooms frame the views.
- Guest rooms feature more space
- Many guest rooms include large, walk-in showers.
- Four guest rooms on the west end of the first and second floors include gas fireplaces and spa tubs.
- Three guest rooms are barrier-free to meet the needs of visitors with disabilities.
- To enhance access, and also serve the needs of visitors with disabilities, more stairwells and an elevator were added.



Queen Wilhelmina State Park Lodge



- The upstairs meeting room increased in size and features windows on three sides. This room offers access to a small balcony overlooking the south view from the mountain. Public restrooms are located nearby.
- The lodge's covered north entrance was remodeled. A wrap-around porch on the building's south side provide visitors with comfortable outdoor space for enjoying the views from the mountain. A new porch was added at the west end.
- The exterior of the lodge features shingles and stonework.
- Energy saving features are included throughout the lodge.
- The panoramic view from the mountain is an important part of the Queen Wilhelmina State Park experience. Visitors and guests will enjoy more wide open views from all the lodge's public rooms, including the restaurant, and all 40 guest rooms.



Queen Wilhelmina is one of the four Lodges of Arkansas State Parks



Mather Lodge at
Petit Jean State Park



DeGray Lake Resort
State Park Lodge



The Lodge at Mount Magazine,
Mount Magazine State Park



Queen Wilhelmina State Park
Lodge



Lake Fort Smith State Park

10 Housekeeping Cabins



Lake Fort Smith State Park

Boston Mountain Multi-use Trail



The 4.1-mile Boston Mountain Multi-use Trail at Lake Fort Smith State Park opened last June. The trail is a purpose-built trail for mountain biking that likewise serves as a hiking trail. The name is from the geographical range of the Ozarks in which the park is located.

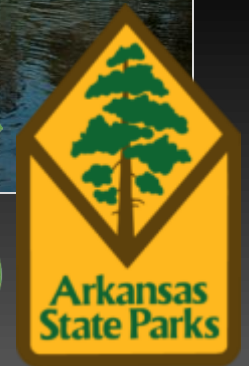
In addition, the park opened a 1.8-mile spur off of the Ozark Highlands Trail (OHT). The Shepherd Springs Loop provides a scenic return route for hikers on the OHT, creating a six-mile loop for hikers when combined with the Boston Mountain Multi-use Trail.

Ozark Folk Center State Park New Walkways





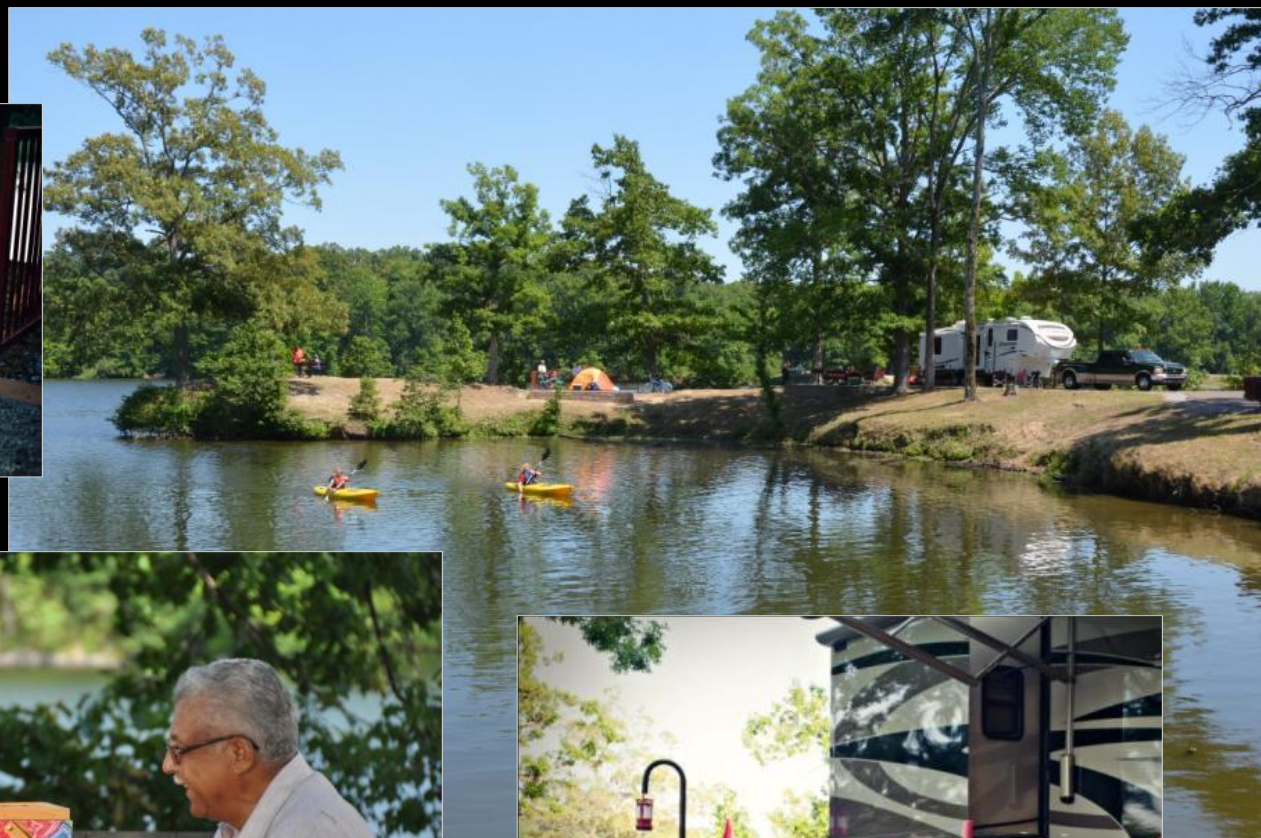
Development of Mississippi River State Park (and earlier Mount Magazine State Park) has been done through a Special Use Permit from the U.S. Forest Service.



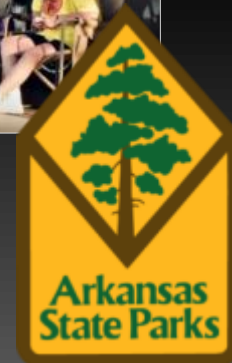


The renovated Beech Point Campground, Bear Creek Lake Recreation Area, Mississippi River State Park.





Beech Point
Campground





The joint agency visitor center at Mississippi River State Park is staffed by Arkansas State Parks and U.S. Forest Service personnel.



Mississippi River State Park

Beginning October 1, 2015, Arkansas State Parks will take over operation of all recreational facilities within the St. Francis National Forest. We'll begin renovations to the current U.S. Forest Service campground at Storm Creek. However, first we'll want to have staff presence on site, so our first work will be the construction of a park residence there.

The current Day-use area will open first. Look for the renovated campground to come online in 2016 or 2017.



Beech Point Campground



Crowley's Ridge State Park

Renovation of the CCC Group Dining Hall



The CCC Group Dining Hall was renovated. This historic structure was updated with modern kitchen equipment, a new restroom facility, and modernized lighting and HVAC equipment.

The group lodging area in the park features this dining hall/kitchen, five bunk cabins, and a bathhouse.

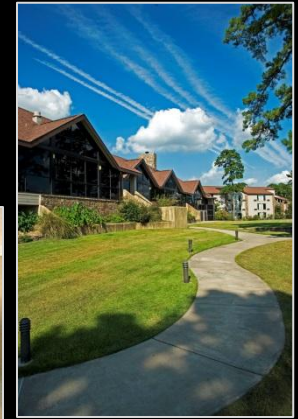


Renovation of the Crater of Diamonds State Park Visitor Center

To better tell the stories of Arkansas's diamond site, the visitor center includes new exhibits.



DeGray Lake Resort State Park Lodge



Furnishings in the guest rooms at the lodge were updated.

DeGray Lake Resort State Park



Arkansas's resort state park now includes an 18-hole disc golf course that opened last July. Play is free of charge.



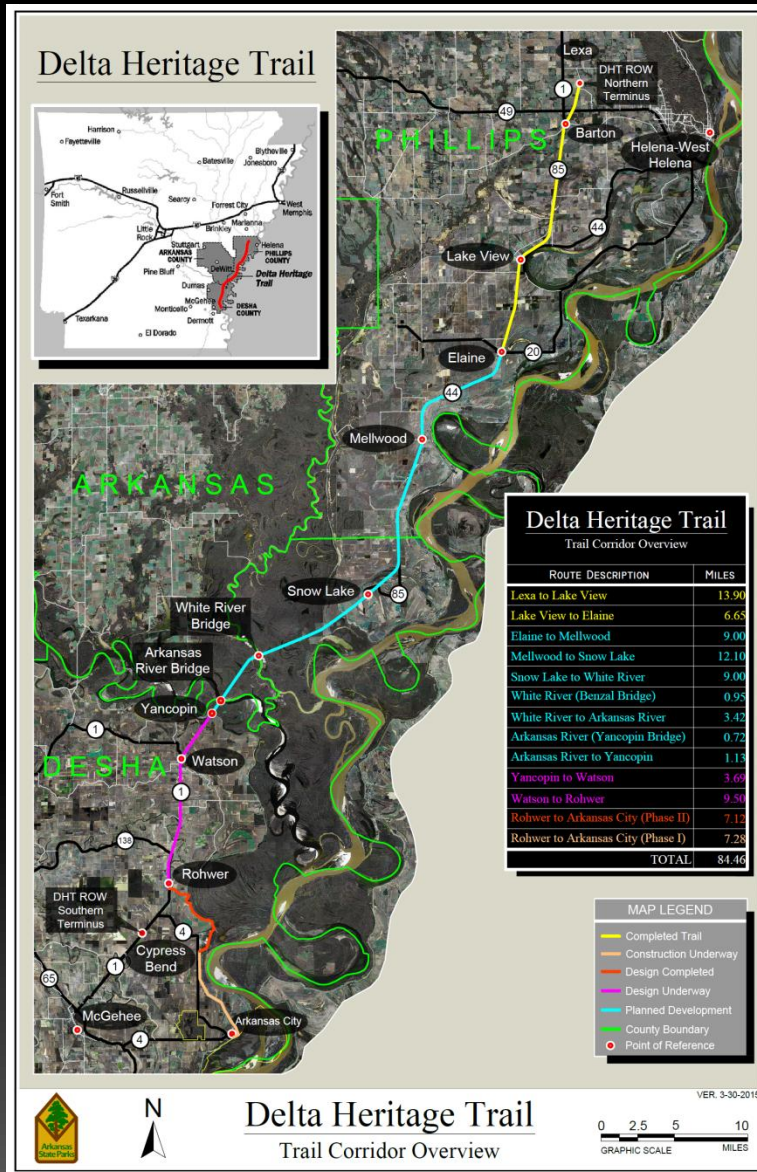
With the front nine and back nine each beginning and ending at the park visitor center, snacks, drinks, and restrooms are within easy access. Loaner disc golf sets, and discs for purchase, are available at the visitor center for those who don't bring their own equipment.

Woolly Hollow State Park Enders Fault Mountain Bike Trail



This 9.2-mile mountain bike and hiking trail opened last June. The trail takes its name from the area's active seismic fault line just north of the park. Featuring the rolling terrain found here in the foothills of the Ozarks, this singletrack trail leads through gentle valleys, along pristine creeks, and climbs over 150 feet to offer winter views of Lake Bennett from ridges above. Cyclists can choose to ride the entire trail or divide it into two loops, the North Loop and the South Loop. [A short 0.64-mile section of the park's Historic Springfield Road Trail connects to this new 9.2-mile trail.]

Delta Heritage Trail State Park



Delta Heritage Trail State Park



This rail-to-trail conversion is being developed in phases along the former Union Pacific Railroad right-of-way stretching from near Lexa (west of Helena) to Rohwer, and extending via the Mississippi River levee to Arkansas City. A total of 21 miles (all in Phillips County) of this compacted, crushed rock trail have been constructed. The newest, 6.7-mile section stretches from Lake View to Elaine. The new trailhead at Elaine includes restrooms, information board, and drinking water.

A new, shared use (with vehicles) roadway is under construction. This roadway will include a 14.5-mile asphalt, paved cycling surface with views from the Mississippi River mainline levee. This will connect Arkansas City to the Rohwer Relocation Center National Historic Landmark.

The Ridges at Village Creek, Village Creek State Park



This Andy Dye signature course features the rolling terrain of Crowley's Ridge, dramatic elevation changes, and the backdrop of the surrounding hardwood forest.



Logoly State Park



Former visitor center is being replaced



Logoly was established as Arkansas's first environmental education state park in 1975. The year before, Logoly was designated a State Natural Area.



Construction of the park's new visitor center is in progress. The building will be environmentally friendly and a candidate for LEED Silver (or Gold) certification. The Leadership in Energy and Environmental Design (LEED) Green Building Rating System™ encourages and accelerates global adoption of sustainable green building and development practices.




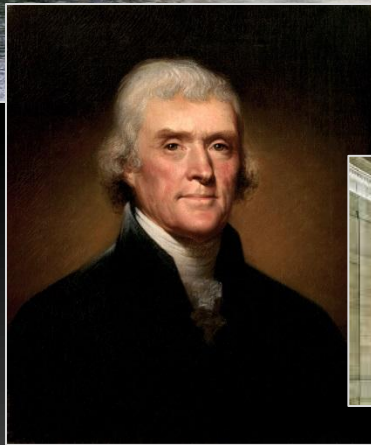
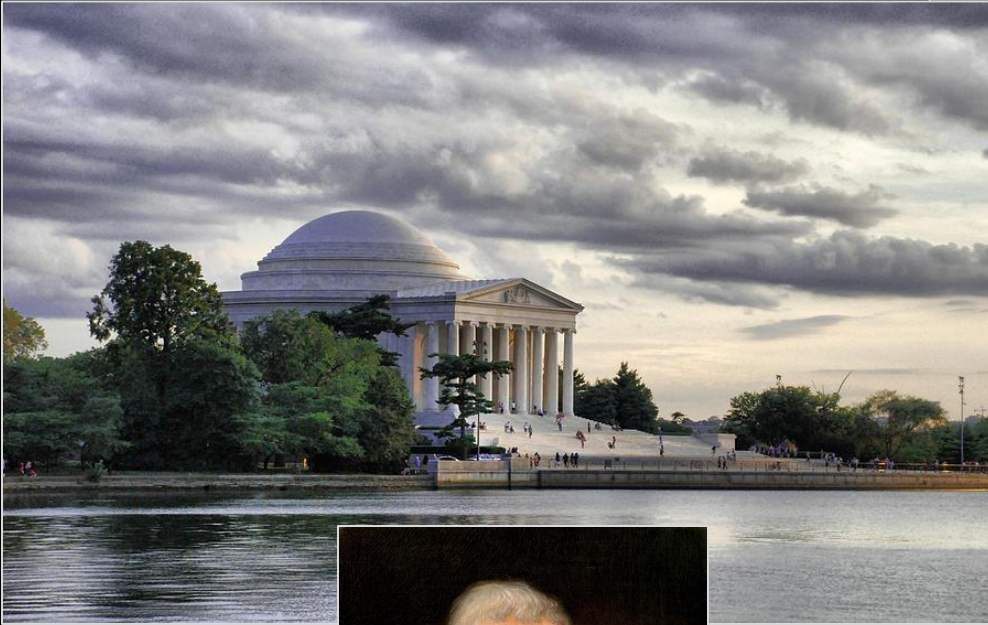
Arkansas's state parks are about preserving special places.



Future generations will carry forward the safeguarding and management of Arkansas's state parks legacy.



LIFE, LIBERTY AND THE PURSUIT OF HAPPINESS



WE HOLD THESE TRUTHS TO BE SELF-EVIDENT; THAT ALL MEN ARE CREATED EQUAL, THAT THEY ARE ENDOWED BY THEIR CREATOR WITH CERTAIN INALIENABLE RIGHTS, AMONG THESE ARE LIFE, LIBERTY AND THE PURSUIT OF HAPPINESS, THAT TO SECURE THESE RIGHTS GOVERNMENTS ARE INSTITUTED AMONG MEN. WE... SOLEMNLY PUBLISH AND DECLARE, THAT THESE COLONIES ARE AND OF RIGHT OUGHT TO BE FREE AND INDEPENDENT STATES... AND FOR THE SUPPORT OF THIS DECLARATION, WITH A FIRM RELIANCE ON THE PROTECTION OF DIVINE PROVIDENCE, WE MUTUALLY PLEDGE OUR LIVES, OUR FORTUNES AND OUR SACRED HONOUR.