




May / June 2019 Flood Update

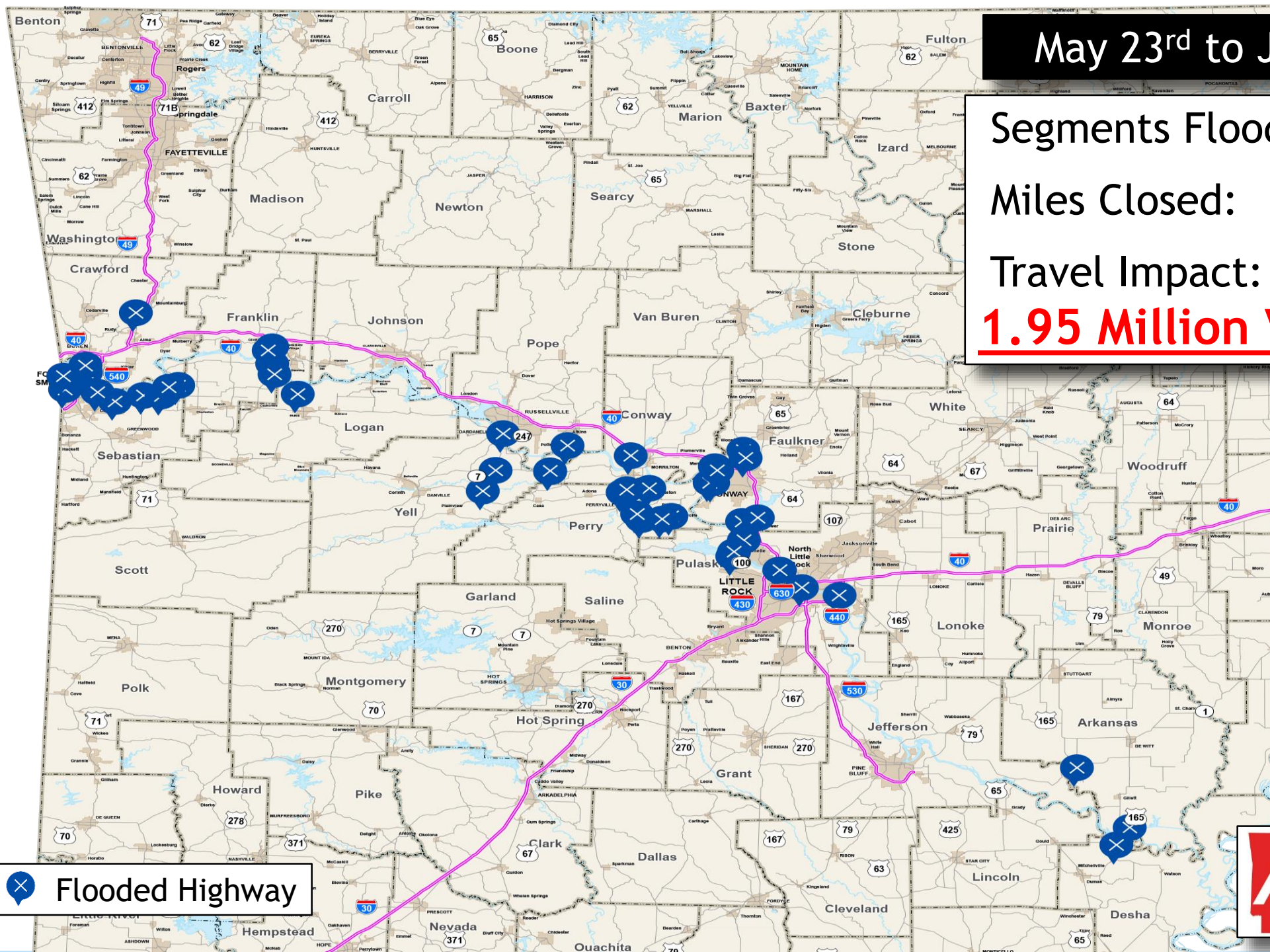
Director Scott Bennett

Arkansas Flood Event 2019

May 23rd to June 19th

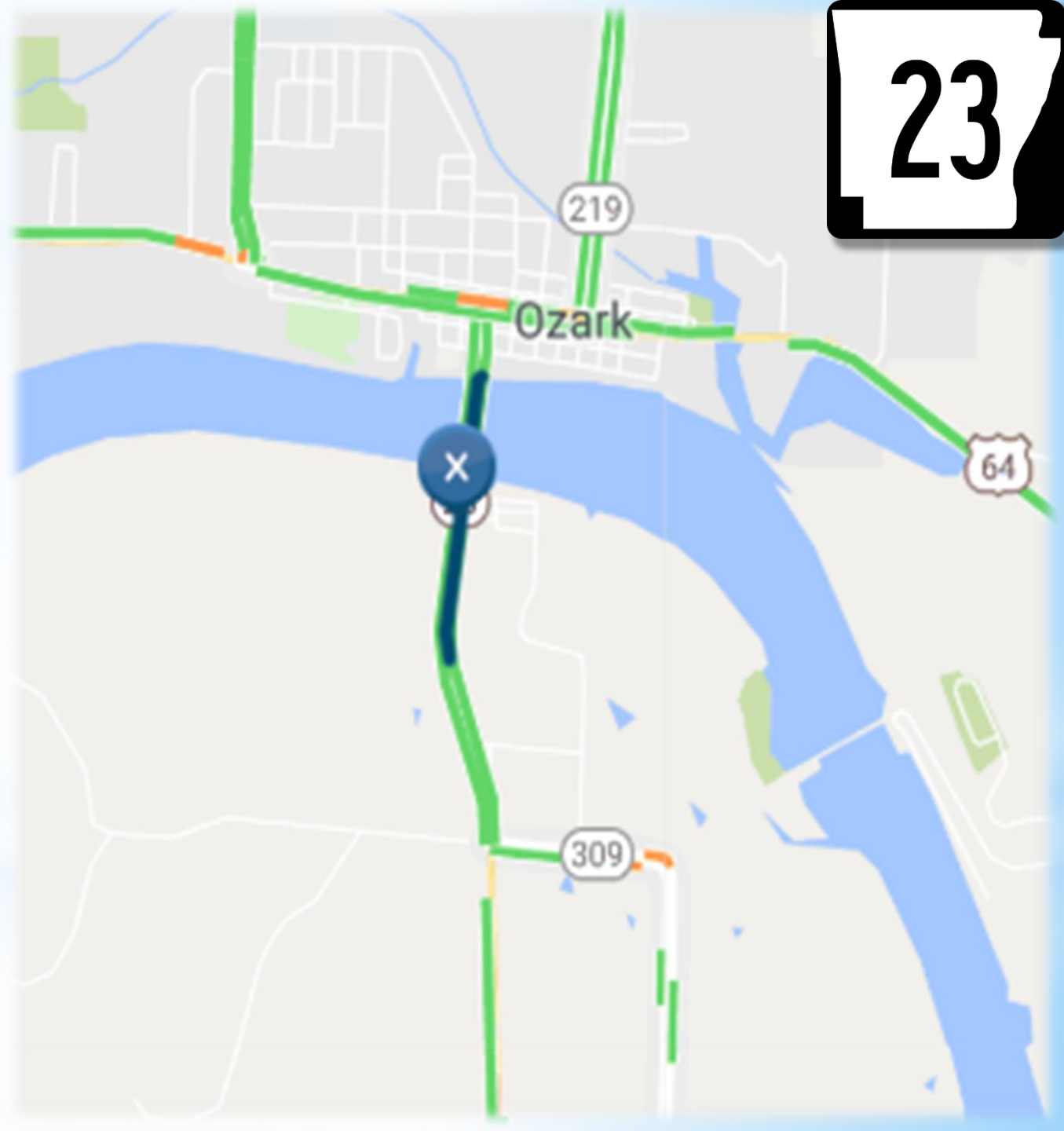
Segments Flooded: 51
Miles Closed: 86
Travel Impact:
1.95 Million Vehicles

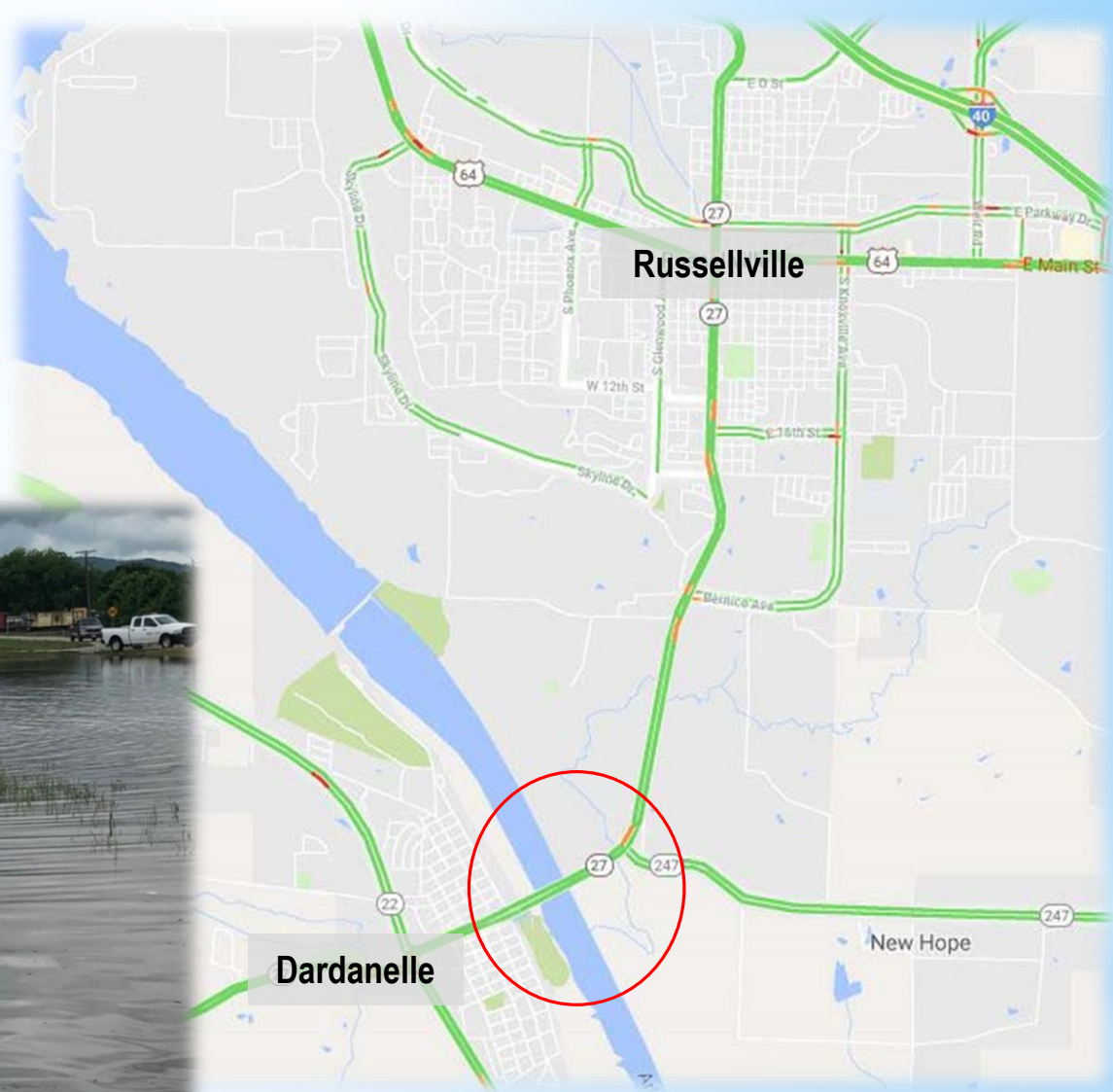
 Flooded Highway



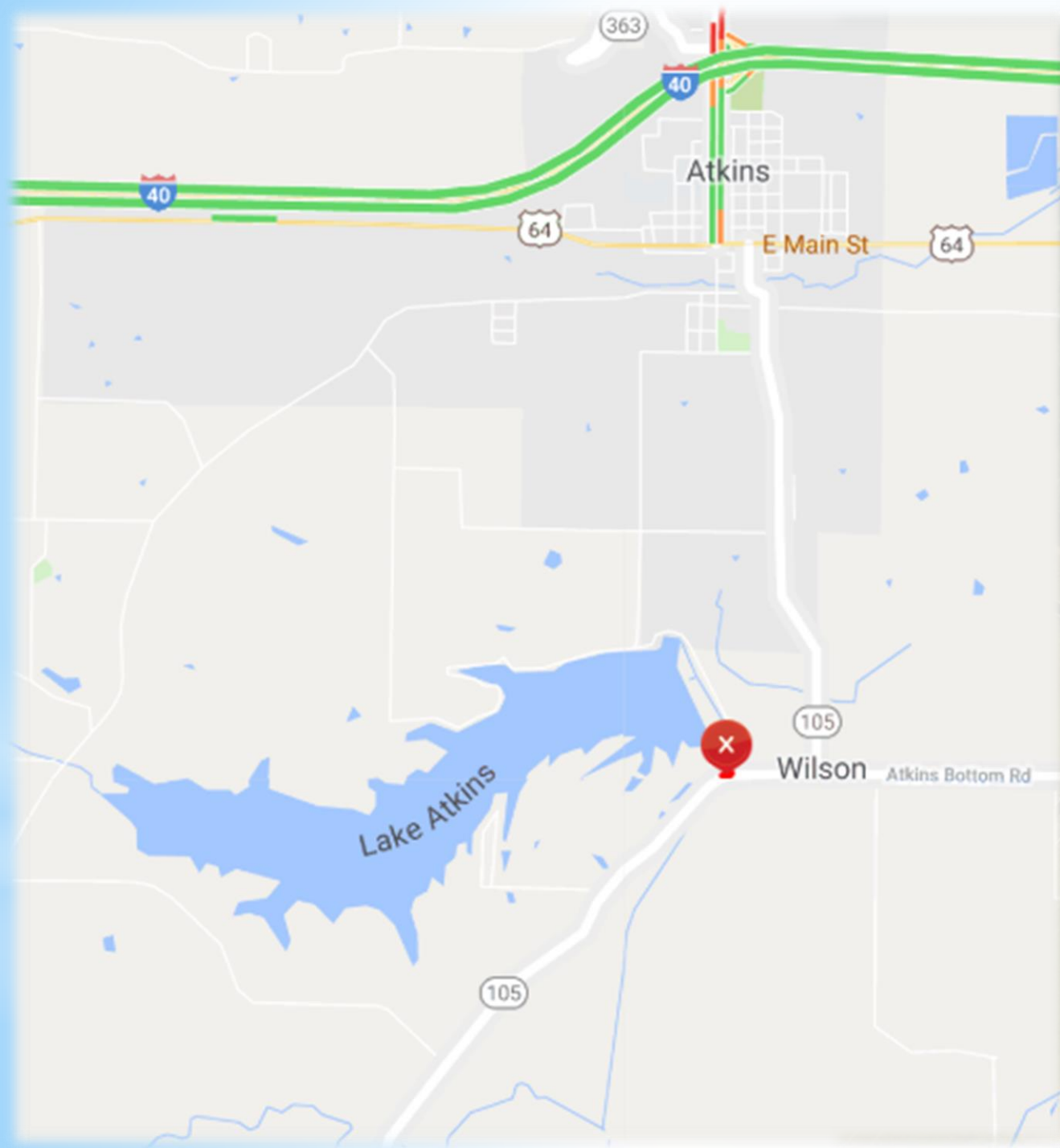
Historic Flooding

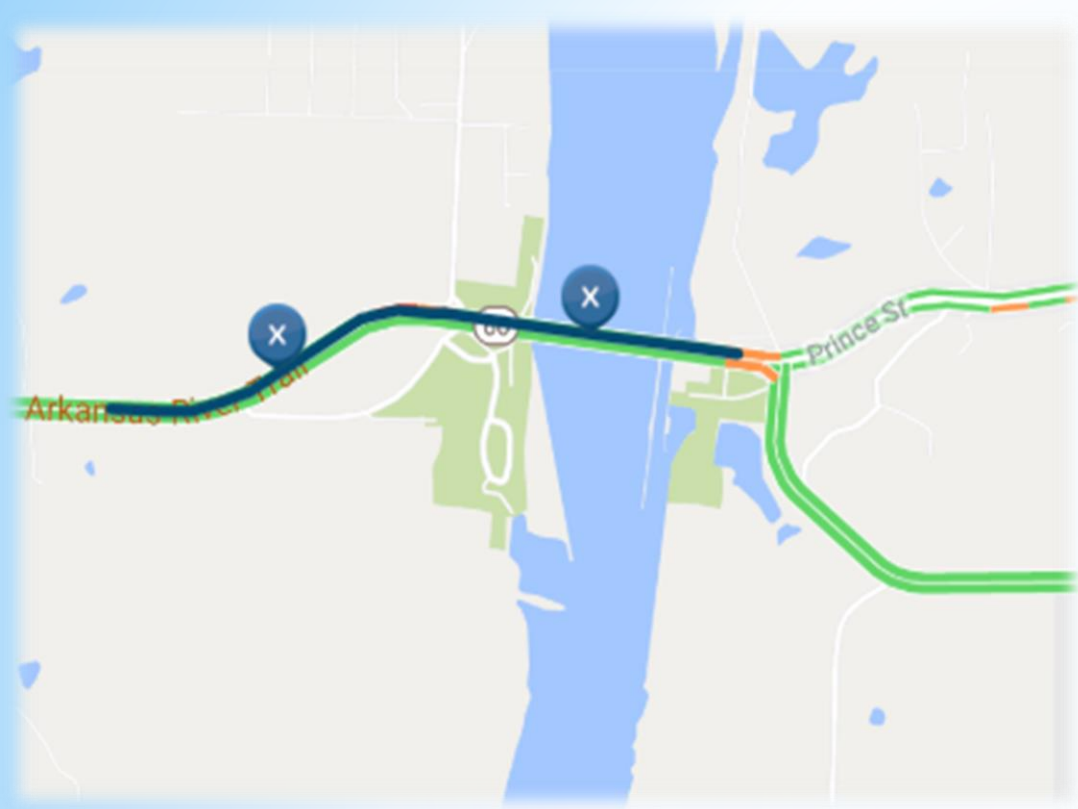


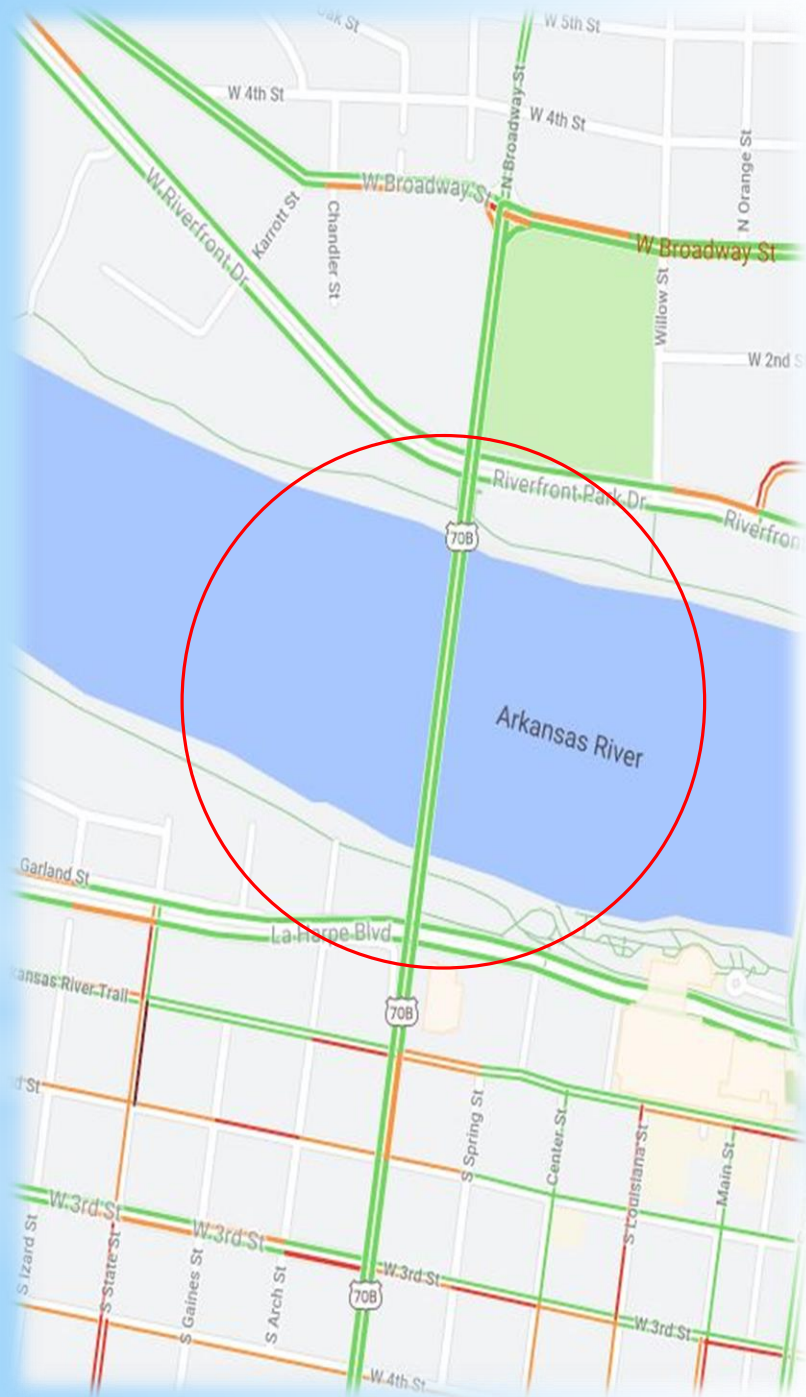












Arkansas River Flooding Little Rock and North Little Rock



Working Together



CHAD ADAMS
DEPARTMENT OF TRANSPORTATION

BREAKING NEWS

40 NEWS ROAD CLOSURES ▶ SEQUOYAH COUNTY
an Fort Smith and Roland is shut down in both directions | Sta



5 NEWS 1:16 62°

BREAKING NEWS TEAM COVERAGE

ARKANSAS RIVER FLOODING

FLOOD EMERGENCY



Traveler Information Center

TRAVELER INFORMATION



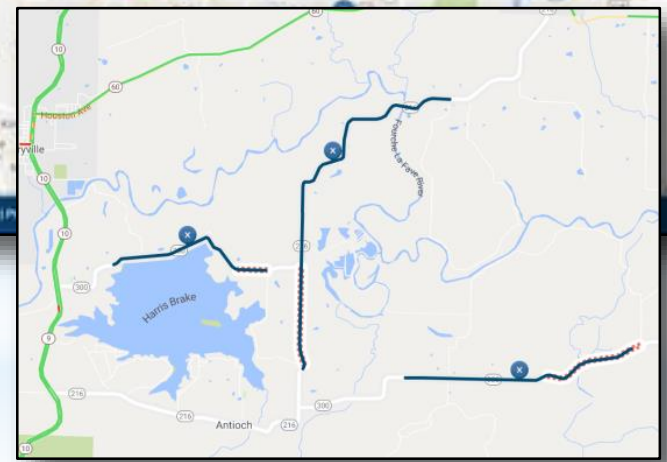
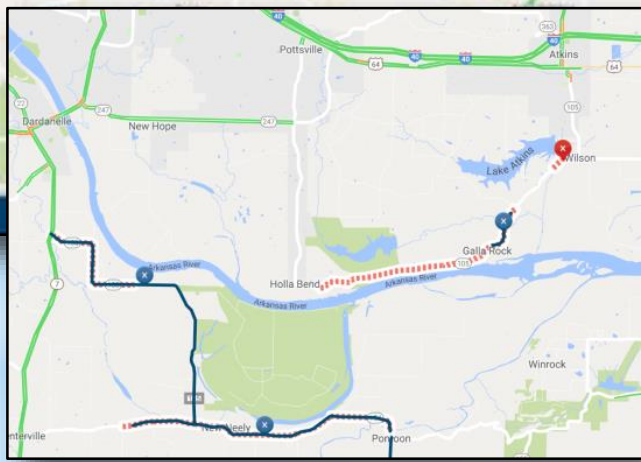
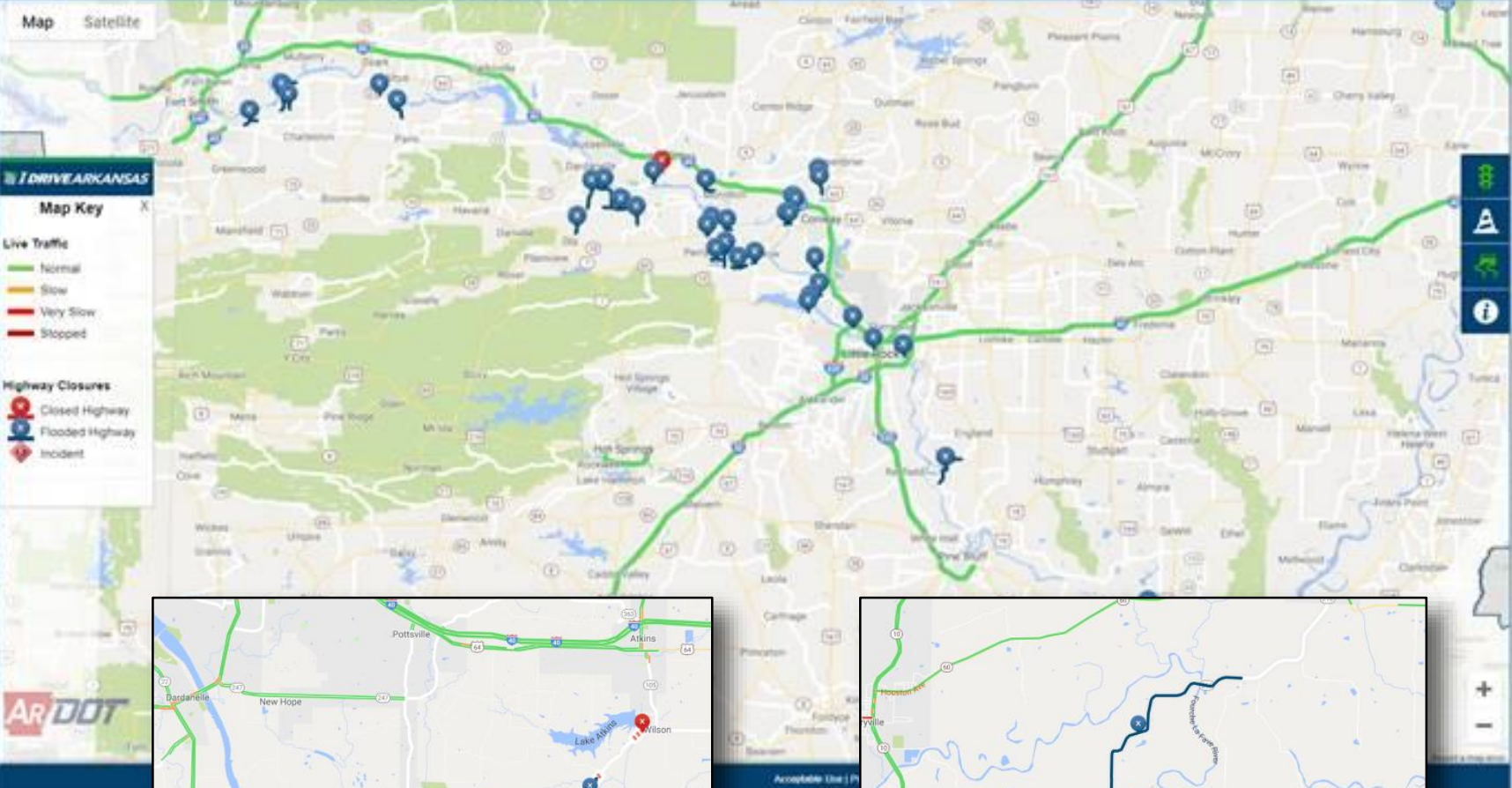
CALL OR TEXT 501-569-2374



NEIGHBORING STATES*

LOUISIANA	888-762-3511
MISSISSIPPI	601-359-1993
MISSOURI	888-275-6636
OKLAHOMA	844-465-4997
TENNESSEE	877-244-0065
TEXAS	800-452-9292

*Text feature not available.



AT&T LTE 3:15 PM 57%

I DRIVE ARKANSAS

Map Satellite

Traffic Camera

I-40 E. of Cadron Creek

AR DOT

Camera View: **W** 1248B

Temperature: 91° Elevation: 387.97 ft.

REPORT A PROBLEM TERMS OF USE

Bigelow Lollie Mayflower

IDriveArkansas



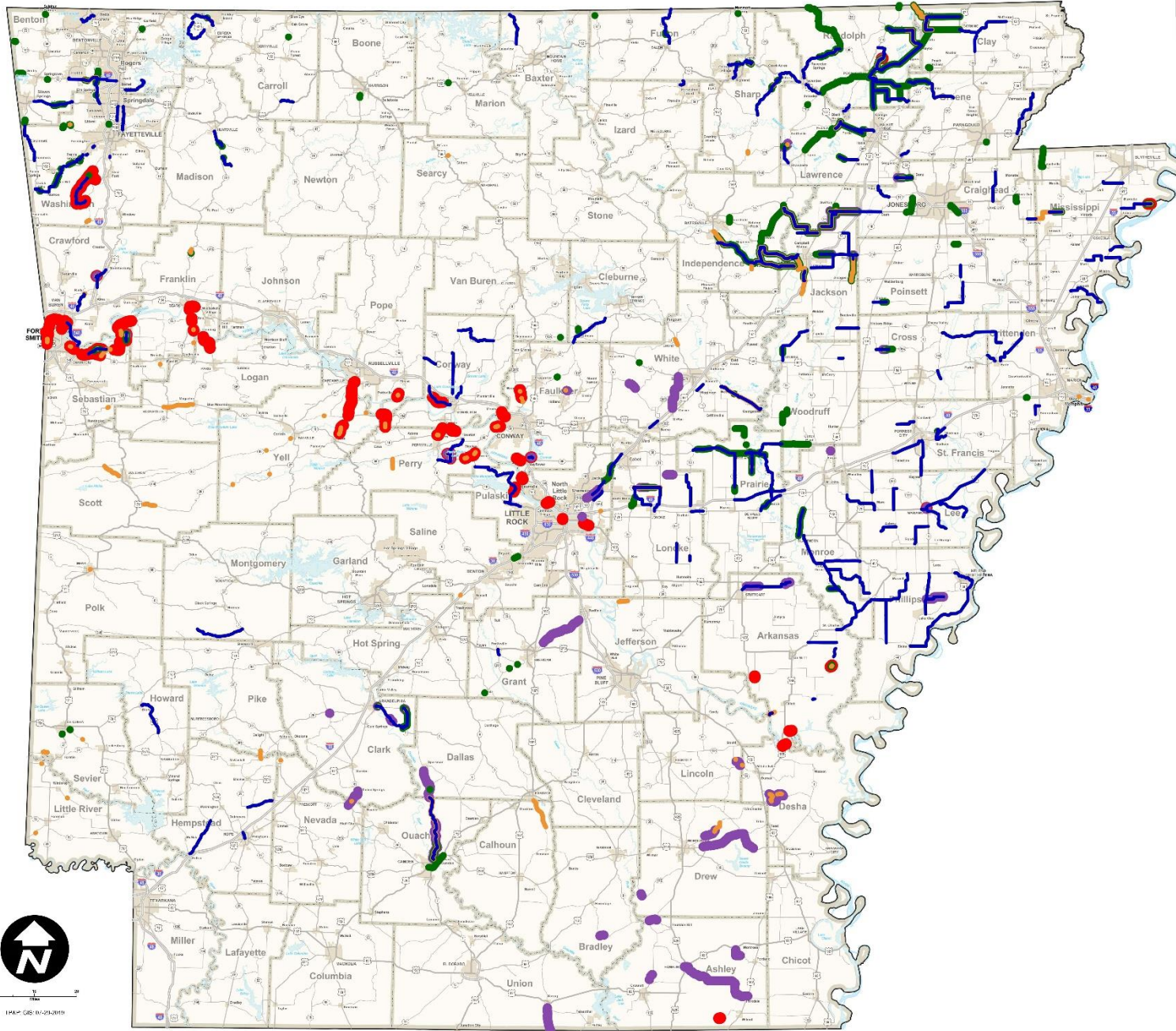
Hwy 255 (Riverfront Dr.), Fort Smith








Hwy 155, Yell County

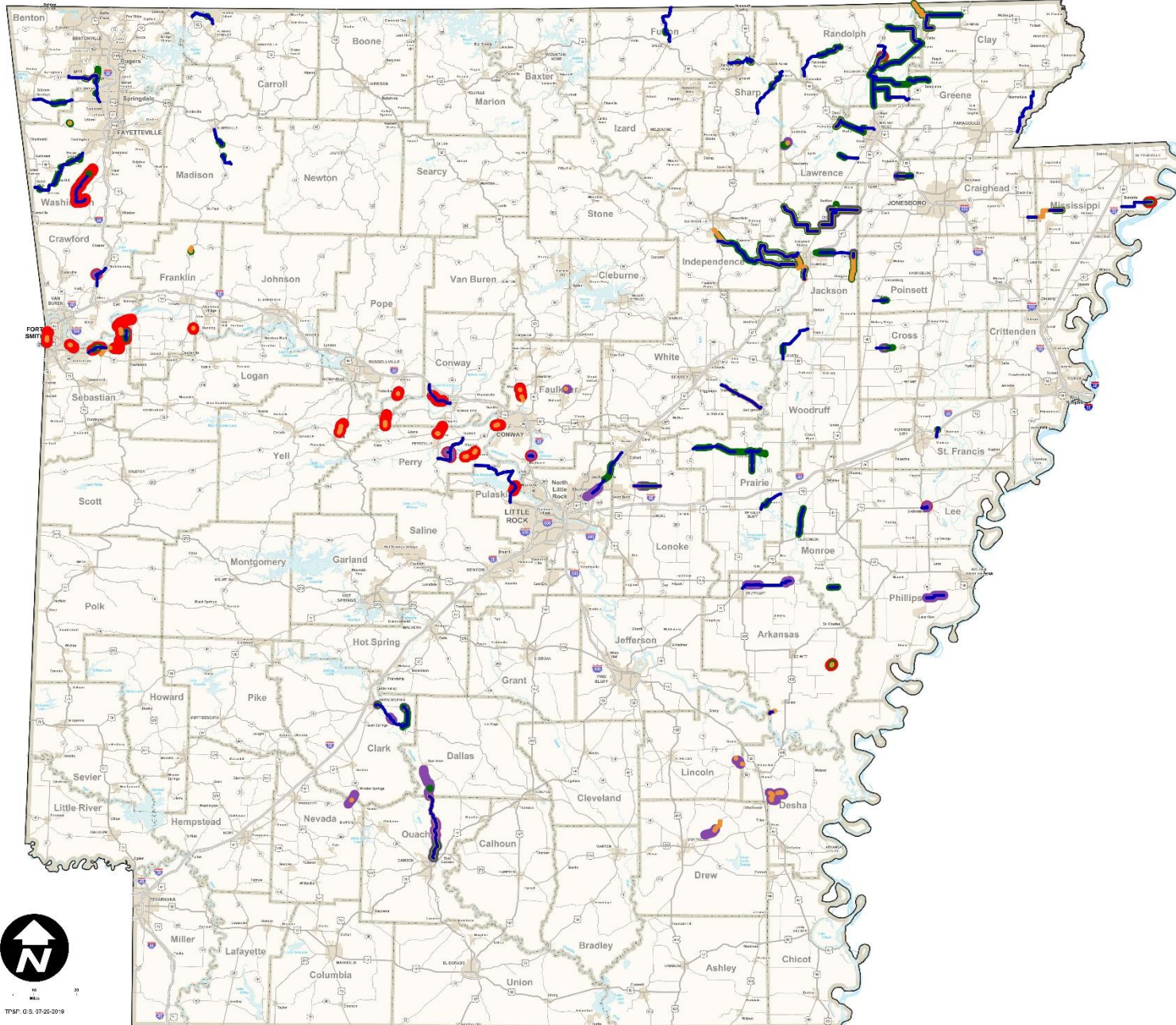


Hwy 300, near Pinnacle Mountain State Park








One or More Times

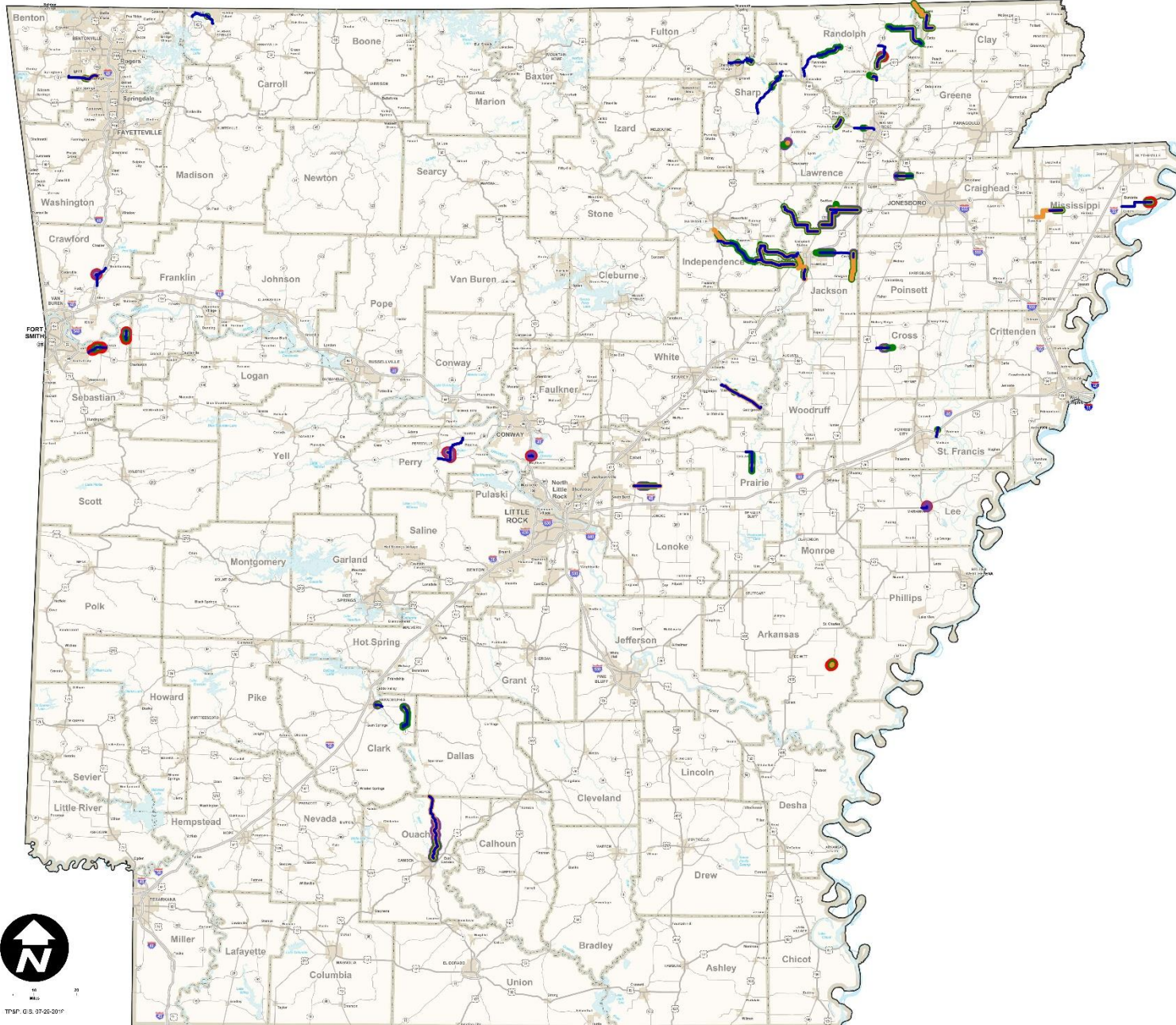
-  **2019 Flooded Highways**
May 23 - June 15
-  **2018 Flooded Highways**
February 14 - March 12
-  **2017 Flooded Highways**
April 26 - May 26
-  **2015-16 Flooded Highways**
December 25 - January 18
-  **2011 Flooded Highways**
April 20 - May 11








Two or More Times

-  2019 Flooded Highways
May 23 - June 15
-  2018 Flooded Highways
February 14 - March 12
-  2017 Flooded Highways
April 26 - May 26
-  2015-16 Flooded Highways
December 25 - January 18
-  2011 Flooded Highways
April 20 - May 11





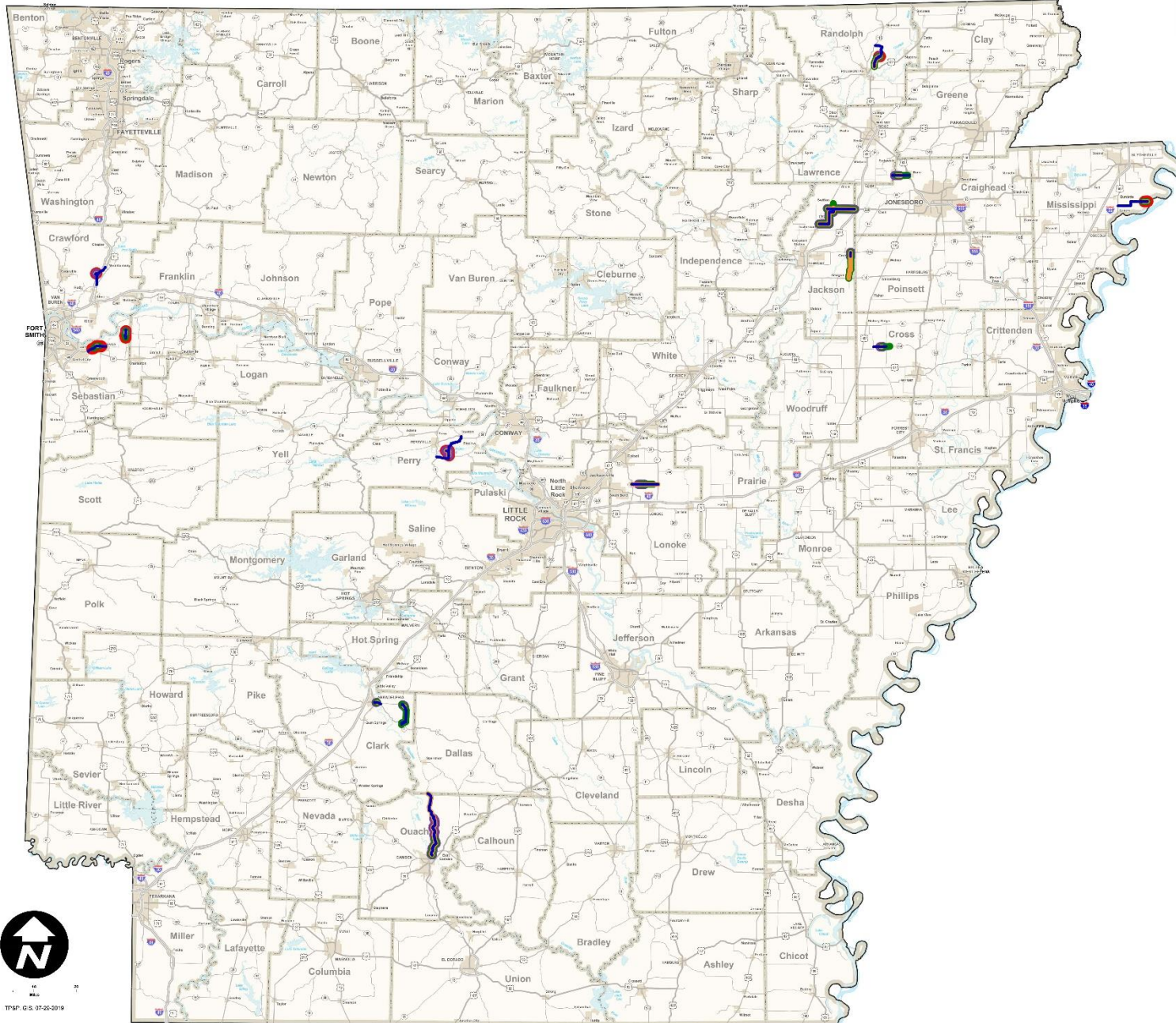
Three or More Times

-  2019 Flooded Highways
May 23 - June 15
-  2018 Flooded Highways
February 14 - March 12
-  2017 Flooded Highways
April 26 - May 26
-  2015-16 Flooded Highways
December 25 - January 18
-  2011 Flooded Highways
April 20 - May 11








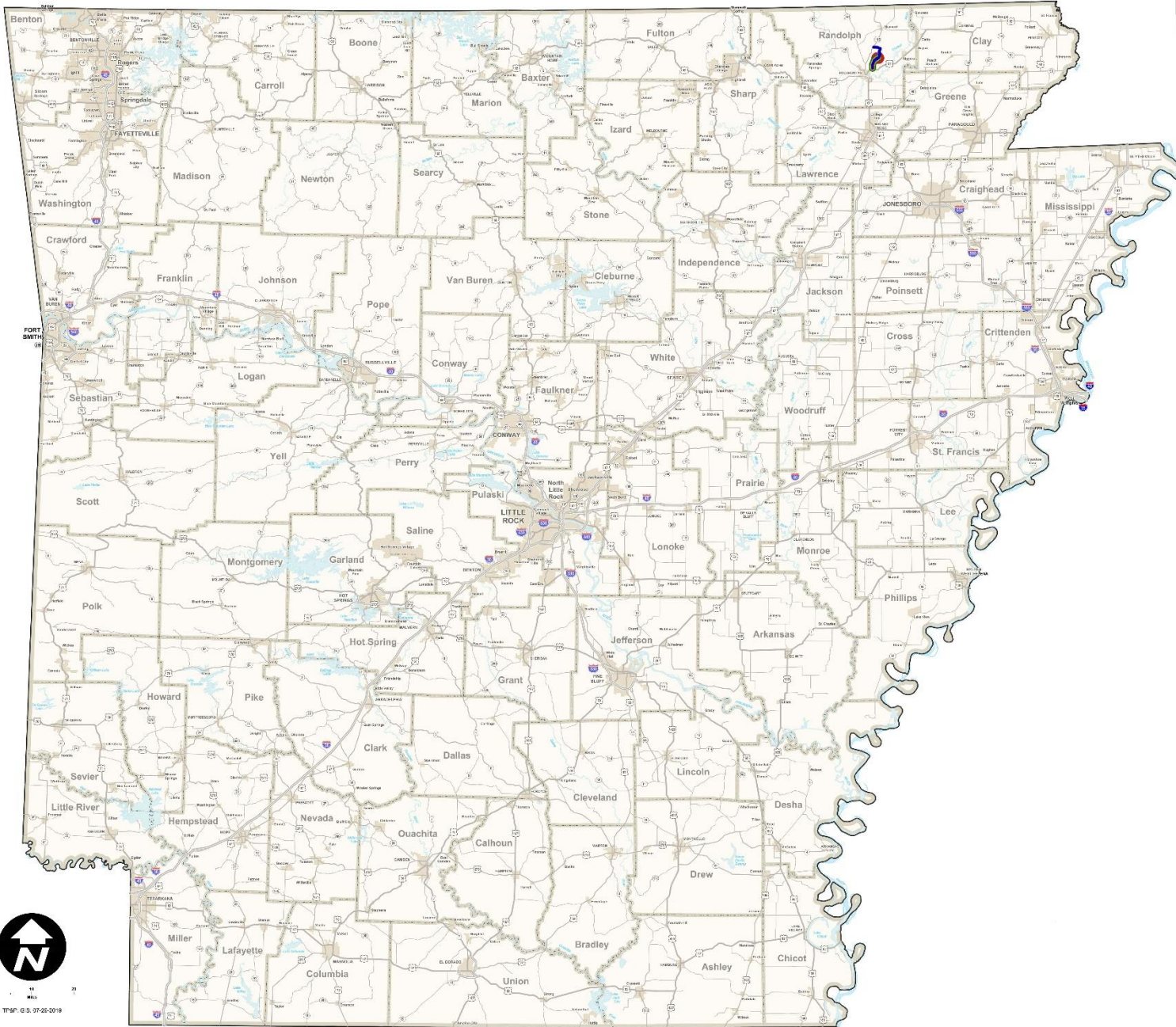
TMSP, © S. 07-20-2019










Four or More Times

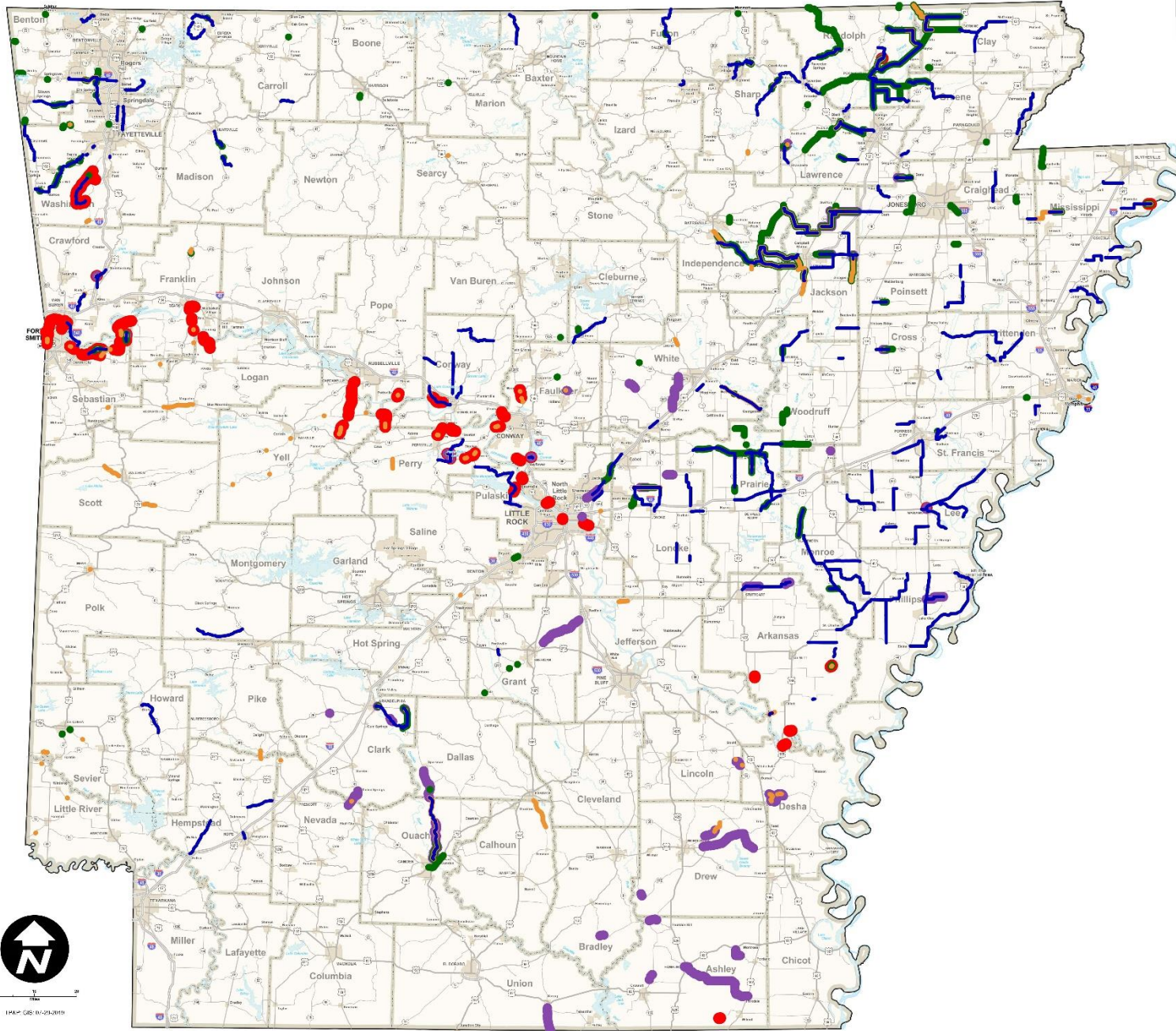
-  2019 Flooded Highways
May 23 - June 15
-  2018 Flooded Highways
February 14 - March 12
-  2017 Flooded Highways
April 26 - May 26
-  2015-16 Flooded Highways
December 25 - January 18
-  2011 Flooded Highways
April 20 - May 11








Five Times

-  **2019 Flooded Highways**
May 23 - June 15
-  **2018 Flooded Highways**
February 14 - March 12
-  **2017 Flooded Highways**
April 26 - May 26
-  **2015-16 Flooded Highways**
December 25 - January 18
-  **2011 Flooded Highways**
April 20 - May 11





One or More Times

-  2019 Flooded Highways
May 23 - June 15
-  2018 Flooded Highways
February 14 - March 12
-  2017 Flooded Highways
April 26 - May 26
-  2015-16 Flooded Highways
December 25 - January 18
-  2011 Flooded Highways
April 20 - May 11





Questions?

