

# Arkansas Insurance Department

## 2012 Annual Report



**1200 West Third Street  
Little Rock, AR 72201-1904  
1-501-371-2600, 1-800-282-9134  
[www.insurance.arkansas.gov](http://www.insurance.arkansas.gov)**



## **The Honorable Mike Beebe, Governor of Arkansas**

I am pleased to present to you the 2012 Annual Report of the Arkansas Insurance Department. This report is established by the provisions of Arkansas Code Ann. § 23-61-112 and summarizes the activities of the Arkansas Insurance Department for the calendar year ending December 31, 2012.

In addition to the required financial disclosures and listing of companies operating in Arkansas, this report highlights the work of the Arkansas Insurance Department on behalf of Arkansas insurance consumers.

Sincerely,

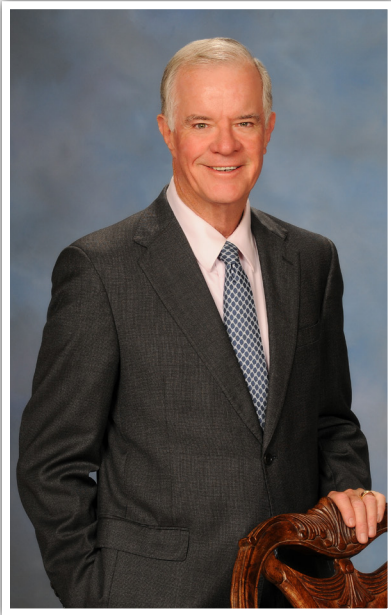
A handwritten signature in blue ink that reads "Jay Bradford".

Jay Bradford  
State Insurance Commissioner

# *Table of Contents*

A Message from the Commissioner	1
History of Insurance Commissioners	2
AID Leadership Team	5
AID Divisions and Programs	6
AID Receipts, Revenue Distribution and Expenditures	9
AID Services:	
Consumer Complaints and Inquiries	10
Consumer Recoveries	10
Medicare Recipients Served	10
Producers & Business Entities (Agents and Agencies)	11
New Company Admissions	11
Total Licensed Companies	11
AID Examinations:	
Financial Examinations	12
Financial Analysis	12
Prepaid Funeral Benefits Contracts	12
Insurance Fraud Investigations	12
Legal Proceedings	12
Liquidations and Rehabilitations	12
Insurers Listed by Arkansas Premium as of 12/31/2011	
Domestic Surplus Lines	13
Farmers Mutual Aid Associations	13
Fraternal Organizations	13
HMO and HMDI Companies	13
Life and Health Companies	14
Property and Casualty Companies	24
Title Companies	36





## *A Message From the Commissioner*

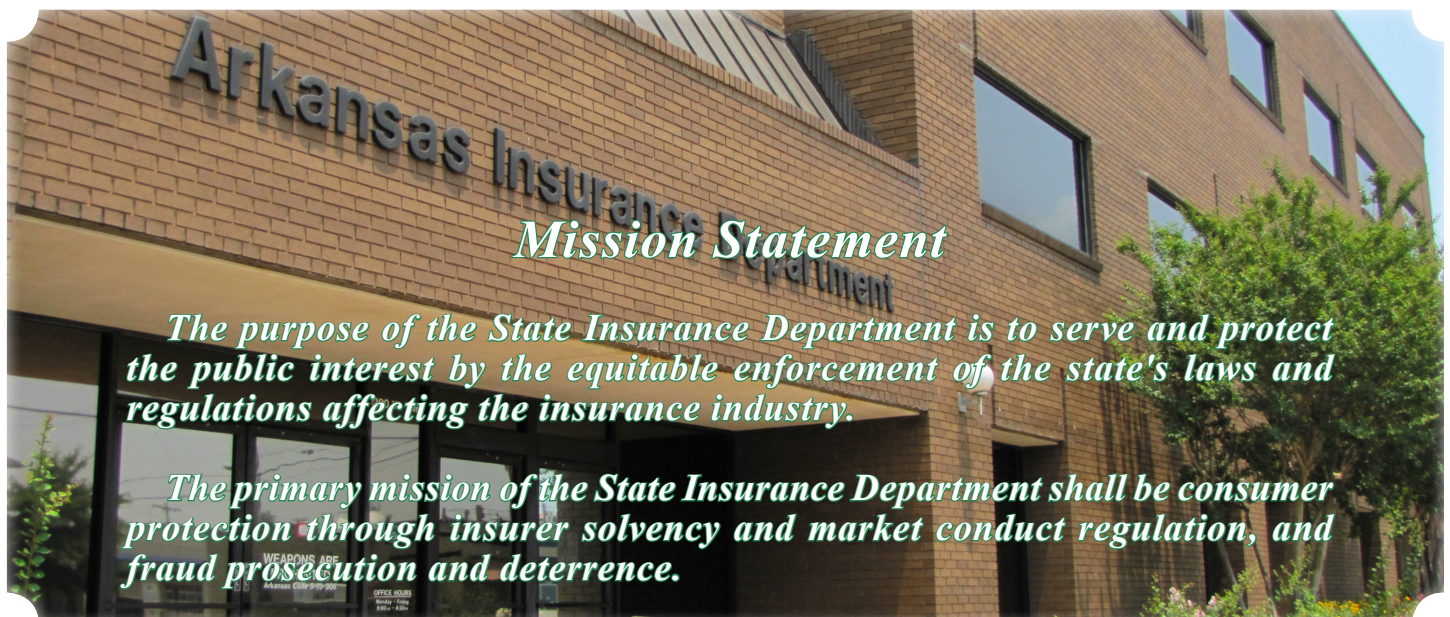
I strongly feel the staff of the Arkansas Insurance Department (AID) work hard every day to fulfill the mission set forth below. I have always been consumer driven, and found when I arrived here at AID in 2009, a group of like-minded individuals. Every insurance complaint we receive is thoroughly investigated. The resolution may not always be what the consumer wanted, but it is within the parameters of the law and regulations.

This past year a great deal of effort has been devoted to meeting deadlines related to the Affordable Care Act (ACA) and ensuring that Arkansas consumers are truly served by its provisions. Arkansas has elected to participate in a State Partnership Exchange or Health Insurance Marketplace (HIM) and a large number of individuals (many as volunteers) have devoted their time to getting the word out to Arkansans as to what to expect as Open Enrollment begins in the fall of 2013 and coverage kicks in on January 1, 2014.

The Beebe administration and the Legislature should be commended for protecting Arkansas consumers by enacting what has come to be known as the “Private Option.” This innovative concept uses federal funds to purchase health insurance from private health insurance companies for many Medicaid-eligible consumers.

AID collects and distributes a large amount of funds from various sources, including licenses, permits, and fees. In 2012, more than \$99 million was directed to General Revenue while more than \$50 million went to police and firemen pension funds.

Upon review of the information contained in this report, I hope you will agree with me that we do a good job of regulating and overseeing the business of insurance in Arkansas and protecting the insurance consumers of our great state.

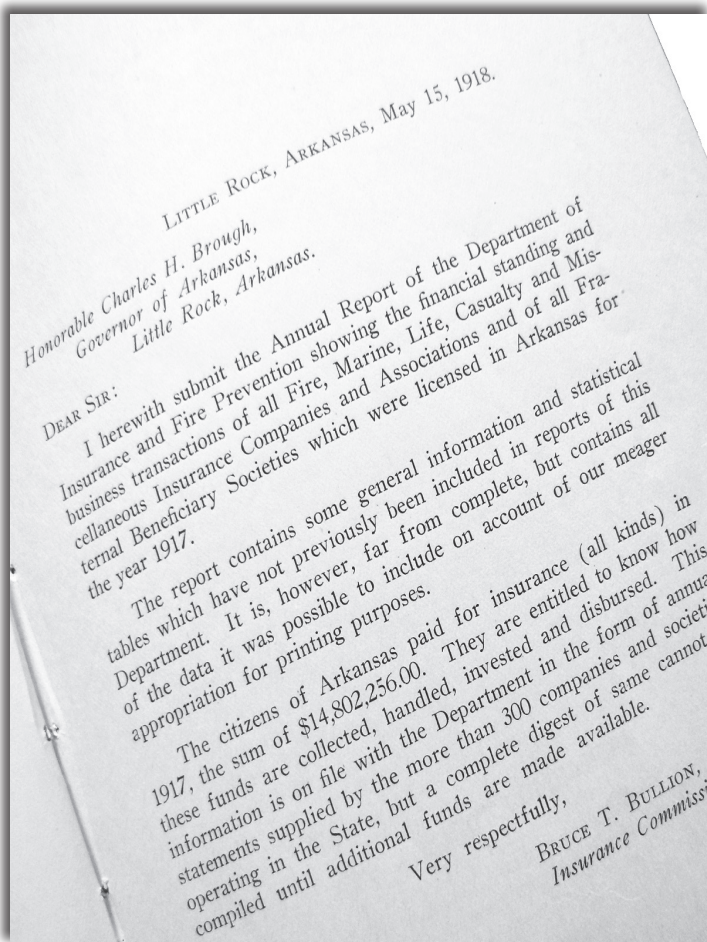


# History of Insurance Commissioners

## AUDITORS OF STATE

The work of the Insurance Department was formerly placed by law in the office of the Auditor of State. The "Insurance Bureau" was established in the Auditor's office by the Act of April 25, 1873, the Auditor being charged by same with the execution of the laws of the state relating to insurance.

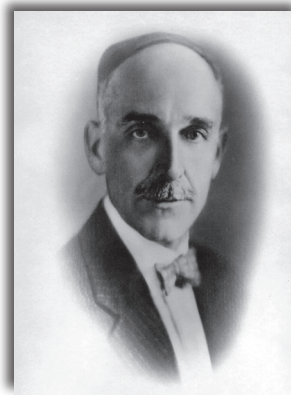
The General Assembly of 1917, by Act No. 190, approved March 7, 1917, on account of the greatly increased volume of work required to be done by the insurance department, separated same from the office of the Auditor of State and created the State Insurance Department. The head of the Insurance Department shall be an Insurance Commissioner appointed by the Governor with the advice and consent of the Senate. The Insurance Commissioner shall enforce the provisions of the Arkansas Insurance Code and shall execute the duties imposed upon him or her by the Arkansas Insurance Code.



## Ex-officio Commissioners of Insurance

- 1873 - 1874 Stephen Wheeler
- 1874 - 1877 W. R. Miller
- 1877 - 1882 John Crawford
- 1883 - 1886 A. W. Files (Died in office. W. R. Miller was appointed to fulfill the unexpired term.)
- 1887 - 1892 W. S. Dunlap
- 1893 - 1896 C. B. Miles
- 1897 - 1900 Clay Sloan
- 1901 - 1904 T. C. Monroe
- 1905 - 1908 A. E. Moore
- 1909 - 1912 John R. Jobe
- 1912 - 1913 John N. Oathout (Elected Auditor September 1912, died June 20, 1913. L. L. Coffman appointed June 23, 1913.)
- 1913 - 1914 L. L. Coffman (Resigned March 4, 1914. M. F. Dickinson was appointed to fulfill the unexpired term.)
- 1915 - 1916 M. F. Dickinson

## INSURANCE COMMISSIONERS



1917-1924  
Bruce T. Bullion



1924-1925/1937-1941  
M. J. Harrison





1925-1927/1929-1931  
W. E. Floyd



1927-1929  
J. S. Maloney



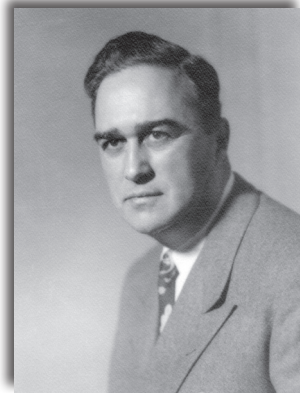
1931-1933  
A. D. Dulaney



1933-1937  
U. A. Gentry



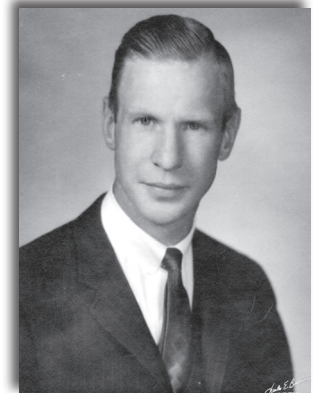
1941-1945/1949-1953  
J. Herbert Graves



1945-1949  
Jack McKenzie



1953-1967  
Harvey G. Combs



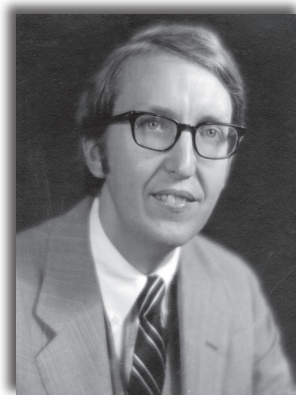
1967-1968  
John Norman Harkey



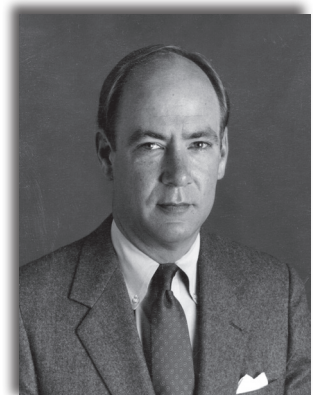
1968-1970  
Allen W. Horne



1970-1972  
A. Gene Sykes



1972-1976  
Ark Monroe, III



1976-1982  
\*W. H. L. Woodyard, III



1983-1985  
Linda N. Garner



1985-1988  
Robert M. Eubanks, III



1988 - 1990  
Ron Taylor



1990-1996  
\*Lee Douglass



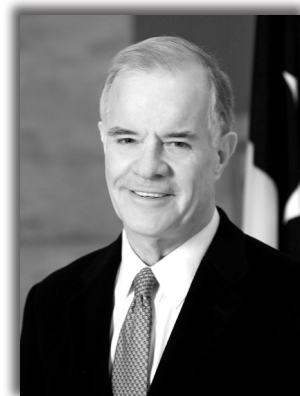
1997-2005  
\*Mike Pickens



2005-2008  
Julie Benafield Bowman



2009  
Lenita Blasingame



2009-  
Jay Bradford

**\*President of the National Association of Insurance Commissioners (NAIC)**

The Arkansas Insurance Department is accredited by the NAIC. To achieve this accreditation, the Department must meet stringent national standards that demonstrate it effectively regulates insurance companies for solvency. The Arkansas Insurance Department views accreditation by the NAIC as an important part of our commitment to the citizens of Arkansas. Accreditation standards enable us to provide expanded consumer protections and to institute and maintain the highest standards in financial regulation. NAIC repeats the accreditation review every five years to confirm that the Department continues to meet all requirements. The Department was most recently accredited in March 2011.

# AID Leadership Team

## ADMINISTRATION

Jay Bradford, State Insurance Commissioner .....501-371-2623.....jay.bradford@arkansas.gov  
Lenita Blasingame, Insurance Chief Deputy Commissioner.....501-371-2824..... lenita.blasingame@arkansas.gov  
Alice Jones, Communications Director .....501-371-2835.....alice.jones@arkansas.gov

## ACCOUNTING

Pam Looney, Insurance Assistant Deputy Commissioner .....501-371-2605..... pam.looney@arkansas.gov

## ARKANSAS HEALTH CONNECTOR

Cynthia Crone, Insurance Deputy Commissioner.....501-683-3634.....cynthia.crone@arkansas.gov

## COMPLIANCE

Dan Honey, Insurance Deputy Commissioner .....501-371-2800 .....dan.honey@arkansas.gov

## CONSUMER SERVICES

Jackie Smith, Insurance Consumer Protection Manager .....501-371-2640 .....jackie.smith@arkansas.gov

## CRIMINAL INVESTIGATION

Greg Sink, Criminal Investigation Division Director .....501-371-2790.....greg.sink@arkansas.gov

## FINANCE

Mel Anderson, Insurance Deputy Commissioner Financial Reg. ....501-371-2665..... mel.anderson@arkansas.gov

## HEALTH INSURANCE PREMIUM RATE REVIEW

Lowell Nicholas, Insurance Deputy Commissioner .....501-683-3638..... lowell.nicholas@arkansas.gov

## HUMAN RESOURCES

Andrea May, Personnel Manager.....501-371-2818..... andrea.may@arkansas.gov

## INFORMATION SYSTEMS

Carder Hawkins, Ins. Deputy Commissioner Information Services ...501-371-2664..... carder.hawkins@arkansas.gov

## LEGAL

Bill Lacy, Insurance Deputy Commissioner & General Counsel.....501-371-2820..... bill.lacy@arkansas.gov

## LICENSE

Fred Stiffler, Insurance Licensing Manager .....501-371-2750.....fred.stiffler@arkansas.gov

## LIQUIDATION

Steve Uhrynowycz, Deputy Receiver .....501-371-2776.....steve.uhrynowycz@arkansas.gov

## PUBLIC EMPLOYEE CLAIMS

Nathan Culp, Insurance Public Employee Claims Director.....501-371-2700..... nathan.culp@arkansas.gov

## RISK MANAGEMENT

Drew Carpenter, Director Risk Management .....501-371-2690.....drew.carpenter@arkansas.gov

## SENIOR HEALTH INSURANCE INFORMATION PROGRAM (SHIIP)

Melissa Simpson, SHIIP Manager.....501-371-2782..... melissa.simpson@arkansas.gov



# AID Divisions and Programs

## **ADMINISTRATION**

**501-371-2622**

**[insurance.administration@arkansas.gov](mailto:insurance.administration@arkansas.gov)**

The Administration Division oversees the overall operations of the AID, establishes Department policy, handles all media inquiries, security, and coordinates consumer protection and outreach activities. Each of the divisions works collectively to ensure the Department's mission of consumer protection is fulfilled. This staff of approximately 200 highly skilled and dedicated employees is committed to serving the citizens of Arkansas every day.

## **ACCOUNTING**

**501-371-2605**

**[insurance.accounting@arkansas.gov](mailto:insurance.accounting@arkansas.gov)**

The Accounting Division collects and oversees fees and premium taxes from all insurance companies conducting business in the State of Arkansas. These fees not only fund the AID (no monies are received from the state's General Revenue Fund), but the taxes are also used to contribute to the state's Police and Firemen Pension Funds and General Revenue. The division handles all purchasing and accounts payable for AID, as well as the development of biennium budgets.

## **ARKANSAS HEALTH CONNECTOR**

**501-683-4170**

**[insurance.exchange@arkansas.gov](mailto:insurance.exchange@arkansas.gov)**

The Arkansas Health Connector (AHC) was established to manage and implement the new Health Insurance Marketplace (HIM) in Arkansas in accordance with the Patient Protection and Affordable Care Act (PPACA) of 2010. As a State Partnership Marketplace, AHC is responsible for certifying and monitoring health insurance plans sold through the federal HIM, ensuring access, affordability, quality and choice for Arkansans. AHC is also responsible for consumer assistance and outreach operations, informing Arkansans of their new health insurance options and connecting them to the federal Health Insurance Marketplace which opens for enrollment October 1, 2013, with full coverage available January 1, 2014.

## **COMPLIANCE**

**501-371-2800**

**[insurance.LnH@arkansas.gov](mailto:insurance.LnH@arkansas.gov)**

**[insurance.PnC@arkansas.gov](mailto:insurance.PnC@arkansas.gov)**

Life & Health (L&H) is responsible for the review and approval of life and health forms, rates and advertising. L&H must approve premiums for individual health policies and must ensure that benefits on health policies provide an acceptable relationship to the premiums charged. L&H reviews contracts for guaranteed interest policies, including life and annuity and variable contracts, equity indexed annuities, funeral insurance, credit life and disability, individual and group health plans, long-term care, Medicare supplements and supplemental benefits contracts, as well as contracts for health maintenance organizations (HMOs).

Property & Casualty (P&C) is responsible for monitoring and regulating rate and form filing activities. All insurance companies transacting business in the State of Arkansas for surety, workers' compensation, and all other property and casualty coverage must submit their forms to P&C for approval. The forms are then reviewed to ensure compliance with state law. For most lines of insurance, Arkansas is considered a "competitive rating state" and, as such, requests for rate changes are effective 20 days after they are filed unless those changes are excessive, inadequate, or unfairly discriminatory.

## **CONSUMER SERVICES**

**501-371-2640 or 800-852-5494**

**[insurance.consumers@arkansas.gov](mailto:insurance.consumers@arkansas.gov)**

The Consumer Services Division (CSD) assists insurance consumers with complaints and inquiries regarding insurance companies, producers, and adjusters. CSD investigates all complaints, working with the insurance company and the consumer to determine the appropriate course of action. CSD travels statewide to provide educational information and materials, and in the event of significant storm damage, travels to damaged areas to assist homeowners with filing claims and procuring emergency living expenses. CSD is working to enhance its communication efforts to consumers in order to assist with needs related to the Affordable Care Act.

**CRIMINAL INVESTIGATION****501-371-2790 or 866-660-0888*****insurance.fraud@arkansas.gov***

The Criminal Investigation Division (CID) receives hundreds of referrals of suspected fraud each year. CID investigates and prosecutes all categories of insurance fraud. Investigations that result in a finding of a criminal violation are referred to the appropriate prosecuting attorney's office. In 2012, CID achieved a 100% conviction rate on those cases referred for prosecution.

**FINANCE****501-371-2665*****insurance.finance@arkansas.gov***

The primary goal of the Finance Division is to protect insurance consumers through effective solvency regulation by monitoring the financial condition of all domestic and foreign insurance companies operating in the state; conducting financial and market conduct examinations; reviewing other financial information and reports filed by insurance entities, such as business plans, reinsurance agreements, merger and acquisition documents, company formation documents, market research and feasibility studies; approves the licensing of insurers, captives, risk retention groups, surplus lines, charitable annuities, continuing care facilities, motor clubs, reinsurance intermediaries, service contract providers, and accredited/trusted reinsurers; examines prepaid funeral contracts and conducts financial examinations of licensees' trust funds and custodial accounts; and oversees statutory security deposits of insurance companies.

**HEALTH INSURANCE PREMIUM RATE REVIEW****501-683-7023*****insurance.hirr@arkansas.gov***

The Health Insurance Premium Rate Review Division (HIPRR) was created in 2010 to enforce provisions of the Affordable Care Act (ACA), and to implement improvements in Arkansas's rate review processes. On July 1, 2011, the Center for Consumer Information and Insurance Oversight (CCIIO) determined that Arkansas has an effective rate review program after careful review of Arkansas's laws, regulations, and bulletins. HIPRR has endeavored to create a health insurance education, outreach and training unit dedicated to accurate and timely dissemination of information about the health insurance rate approval processes and rate trends to a diverse group of stakeholders including the general public, policy makers, health insurers, health care providers, and the business community.

**HUMAN RESOURCES****501-371-2818*****insurance.human.resources@arkansas.gov***

The Human Resources Division is responsible for the recruiting and hiring process, payroll, employee benefits, personnel budget preparation and management.

**INFORMATION SYSTEMS****501-371-2657*****insurance.information.systems@arkansas.gov***

The Information Systems Division (IS) keeps the Department operating effectively and efficiently in the ever-changing world of technology. This is achieved through the IS strategy of leveraging up-to-date, state of the art software and systems technology to continually increase the productivity of the overall Department. The result is minimal growth in the number of Department staff in the face of continued growth in the size of the regulated industry and revenue.

**LEGAL****501-371-2820*****insurance.legal@arkansas.gov***

The Legal Division works closely with every division within the AID, participating in numerous investigations, drafting legislation, rules, bulletins, directives, legal opinions, and investigating consumer complaints. Division attorneys represent the Commissioner and AID staff in lawsuits or other proceedings, administrative hearings and court appeals pertaining to alleged licensee insurance code or rule violations by a licensee and insurance company acquisitions, mergers, reinsurance agreements and similar transactions. 2012 recommendations of the Commissioner as to amendments or supplementation of laws affecting insurance and as to matters affecting the Department were addressed in the 2013 Legislative Session. Legislation passed can be viewed at [www.insurance.arkansas.gov/Legal/Bulletins/15-2013.pdf](http://www.insurance.arkansas.gov/Legal/Bulletins/15-2013.pdf).

**LICENSE****501-371-2750****[insurance.license@arkansas.gov](mailto:insurance.license@arkansas.gov)**

The Licensing Division is responsible for the licensing of resident and nonresident producers, adjusters, title agents, and business entities that are soliciting, selling or negotiating insurance in the State of Arkansas. License oversees the producer examinations and investigates all resident applicants by reviewing Arkansas State Police records. It also ensures that necessary laws are followed regarding license renewals and continuing education.

**LIQUIDATION****501-371-2776****[insurance.liquidation@arkansas.gov](mailto:insurance.liquidation@arkansas.gov)**

The Liquidation Division, on behalf of the Insurance Commissioner as Receiver, manages the day to day affairs of insolvent insurance company estates and insolvent prepaid funeral benefit trusts. Although the Liquidation Division performs certain functions on behalf of the Commissioner, individuals employed with this division are not employed by the State of Arkansas and are not considered state employees. Liquidation does not receive any funding from the State of Arkansas. Liquidation administers the Arkansas Life and Health Insurance Guaranty Association (ALHIGA) and the Arkansas Property & Casualty Guaranty Fund (APCGF). During 2012, APCGF paid over \$780,287 to adjust, settle or litigate claims and recovered over \$2,124,231 as a result of twenty non-domestic and one domestic insurance company receiverships. During 2012, ALHIGA provided benefits to Arkansas insureds and claimants totaling more than \$4,633,104 and recovered over \$1,109,159 as a result of three domestic and eight non-domestic insurance company receiverships.

**PUBLIC EMPLOYEE CLAIMS****501-371-2700****[insurance.public.employee.claims@arkansas.gov](mailto:insurance.public.employee.claims@arkansas.gov)**

The Public Employee Claims Division (PECD) is responsible for the investigation and management of more than 3,600 workers' compensation claims filed each year for Arkansas state employees. Workers' compensation coverage is also provided for emergency service volunteers who are accidentally injured while performing services under the call and supervision of the State of Arkansas. PECD encourages state agencies to implement safety programs, hoping to reduce the number of injuries suffered by state employees. PECD personnel give presentations to several audiences each year. The prevention of injuries helps in three areas: 1) improves the quality of life of employees; 2) helps agencies with staffing issues; and 3) reduces workers' compensation costs for the taxpayers of the State of Arkansas.

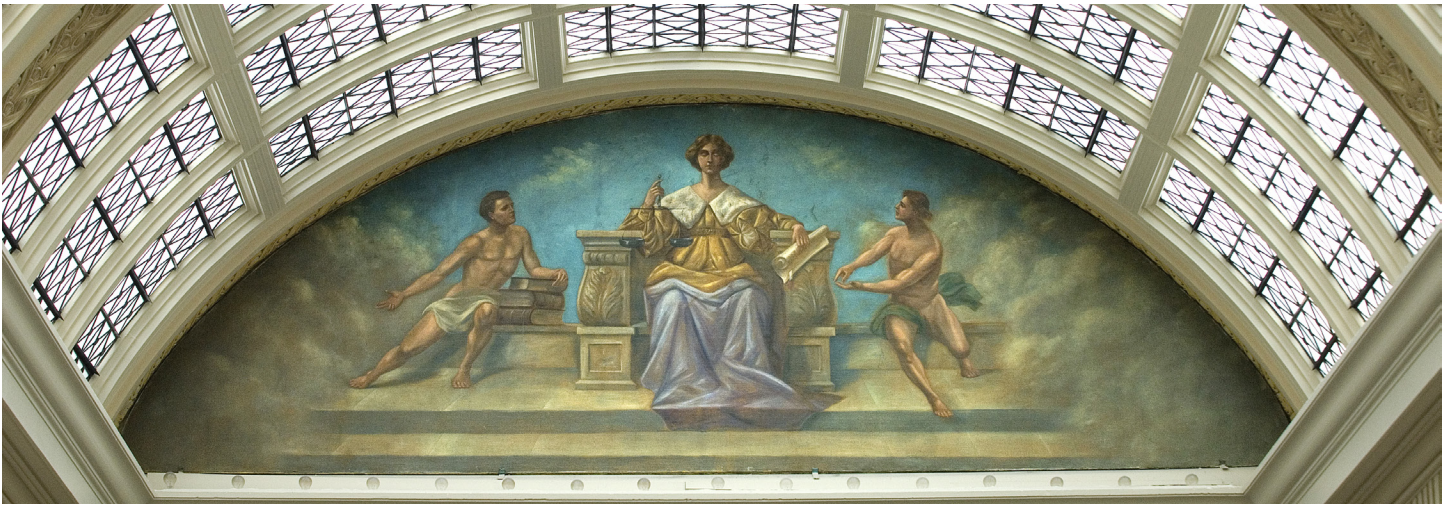
**RISK MANAGEMENT****501-371-2690****[insurance.risk.management@arkansas.gov](mailto:insurance.risk.management@arkansas.gov)**

The Risk Management Division (Risk) was established to minimize the cost of insurance and surety bonding to Arkansas state agencies, and to analyze and make recommendations on loss control and safety programs in an effort to protect state assets. In 2004, Risk assumed the responsibility of providing insurance coverage, consulting, and loss control services to public schools that choose to participate in the Public School Property and Vehicle Insurance Trust Fund. Property inspections and appraisals are conducted on approximately 5,500 state owned and leased structures and 2,500 school district structures with insured values of \$13 billion. A vehicle safety program covering 5,500 state agency and 5,000 public school vehicles has been in effect for many years, resulting in improved loss ratios. Risk also offers on-site advanced defensive driver training at no cost to state agencies and participating schools.

**SENIOR HEALTH INSURANCE INFORMATION PROGRAM****[insurance.SHIIP@arkansas.gov](mailto:insurance.SHIIP@arkansas.gov)****501-371-2782 or 800-224-6330**

The job of the Senior Health Insurance Information Program (SHIIP) is to help Arkansans save money and make informed decisions about Medicare. SHIIP recruits and trains a volunteer network throughout the state to provide in-person information, assistance, and presentations as well as help at community events and health fairs. SHIIP produces Medicare, Medicare Advantage, and Medicare Part D publications for order and distribution via its website. In addition, SHIIP assists with applications for Medicare subsidy programs like Medicare Savings Program and Extra Help enabling recipients to save thousands of dollars annually.





## ***AID Receipts, Revenue Distribution and Expenditures***

### **Fiscal Year 2012 Receipts**

Insurance Department Trust Fund.....	\$ 21,346,707.30
Federal Funds .....	2,903,272.57
Premium & Other Taxes .....	160,321,873.06
Licenses, Permits and Fees .....	30,115,826.59
	<b>\$214,687,679.52</b>

### **Distribution of Revenues**

General Revenue .....	\$ 99,186,031.84
Police & Firemen Pension Funds .....	50,584,243.25
Insurance Department Funds:	
Agent License .....	11,744,715.74
Policy Filing Fees .....	16,760.00
Copies .....	3,444.70
Examiner Travel Expense Reimbursement .....	59,229.65
Governmental Bonding Board Restitution .....	113,497.08
Continuing Education Fees.....	142,310.00
Pre-Paid Funeral Fees .....	318,285.06
Workers' Compensation Qualification Fees .....	4,500.00
Workers' Compensation Commission .....	1,040,035.65
AMAIT – State Fleet and Property Insurance .....	8,004,025.00
Insurance Department Trust Fund Fees .....	21,346,707.30
Pre-Paid Funeral Fees .....	11,454.74
Criminal Investigation Assessment.....	630,035.99
Criminal Background Checks – Agents.....	81,599.00
School – Auto/Property Insurance.....	7,264,405.70
Bail Bond Fees .....	681,000.00
Federal Grant Draws* .....	2,903,801.85
Fire Protection Revolving Fund.....	10,551,597.97
Total Insurance Department Funds.....	64,917,404.43
	<b>\$214,687,679.52</b>

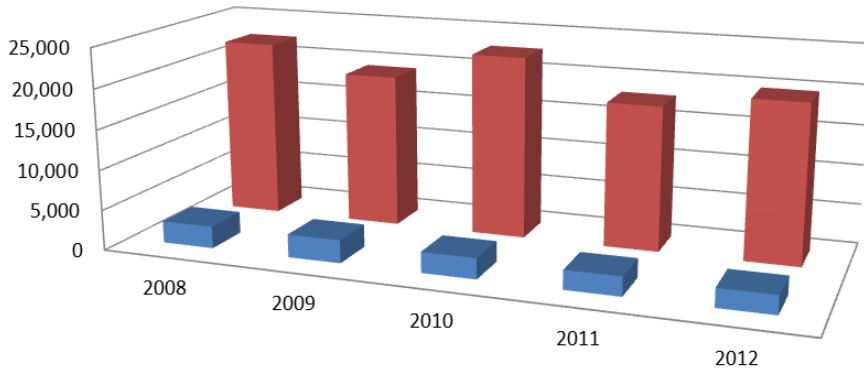
### **Fiscal Year 2012 Expenditures**

Regulatory Services (Insurance Department Budget).....	\$12,253,350.00
--	-----------------

\* Arkansas Health Connector, Consumer Assistance Program, Health Insurance Premium Rate Review, Senior Health Insurance Information Program

# AID Services

## Complaints and Inquiries



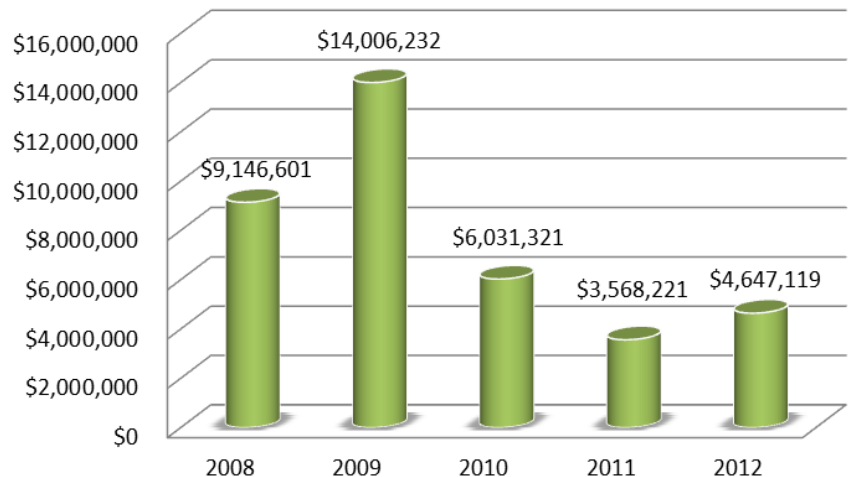
A complaint is a written grievance filed by an insurance consumer or their advocate with our Consumer Services Division (CSD).

Inquiries are informal questions answered by a CSD representative.

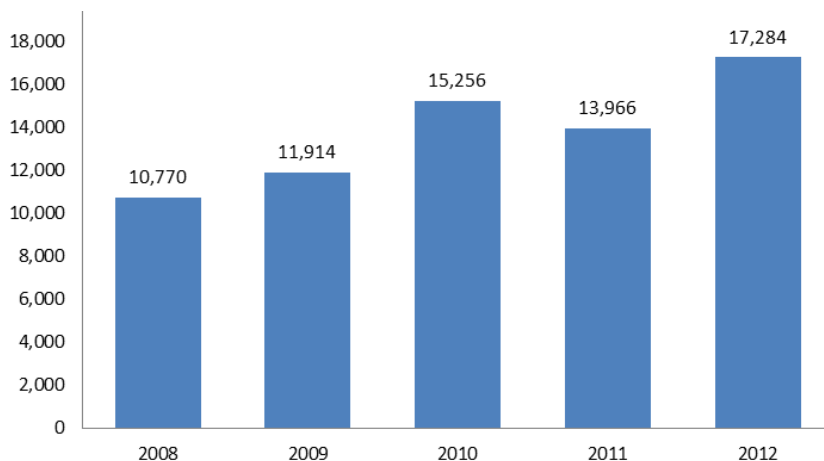
	2008	2009	2010	2011	2012
Complaints	2,731	2,864	2,584	2,391	2,308
Inquiries	22,353	19,207	22,810	18,048	19,801

## Recoveries

Recoveries are amounts recovered for consumers by CSD in excess of the amount initially offered by insurance companies.



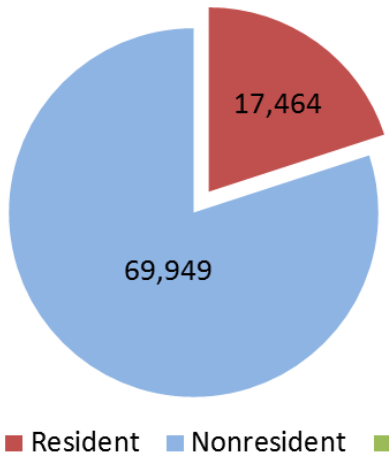
## Medicare Recipients Served



The Senior Health Insurance Information Program (SHIIP) provides Medicare counseling, education and assistance to Medicare beneficiaries and their caregivers.

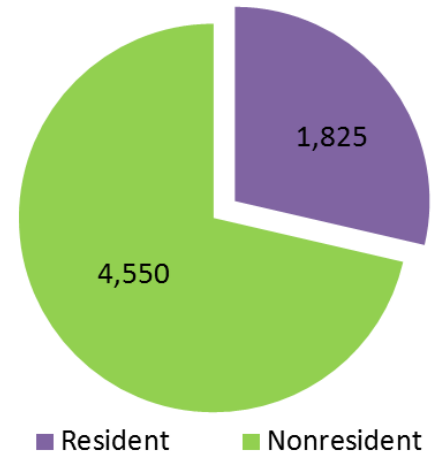
## *Producers and Business Entities (Agents and Agencies)*

### *Producers and Adjusters*



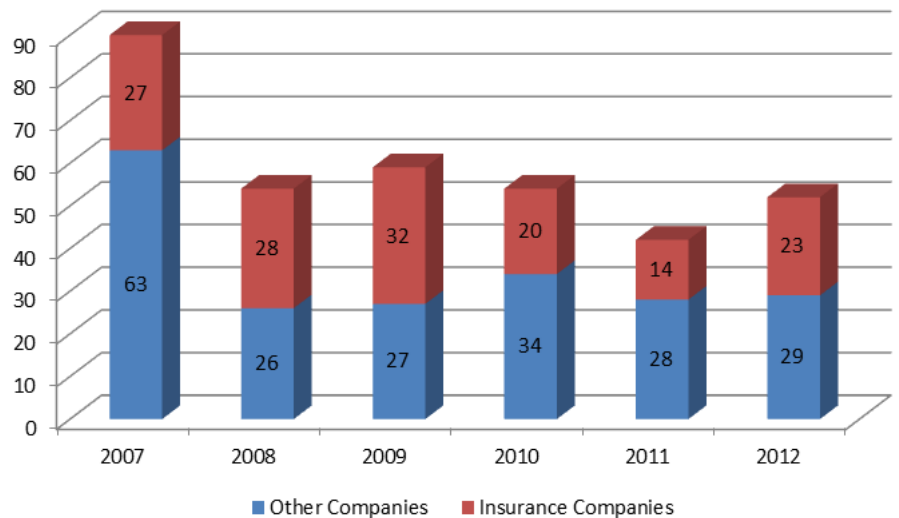
AID License Division licenses resident and nonresident producers, adjusters, title agents and business entities that are soliciting, selling or negotiating insurance in the State of Arkansas. "Resident" means the producer or business entity is based in Arkansas.

### *Business Entities*



### *New Company Admissions*

New company admissions are subject to in-depth analysis by our Finance Division. AID admitted 23 new insurance companies and 29 other companies in 2012. Other companies include automobile clubs, risk retention groups, charitable gift annuity organizations, service contract providers, Accredited/Trusted Reinsurers, and surplus lines.



### *Total Licensed Companies*

<b>Licensed Insurance Companies</b> .....	1,545
Domestic (Arkansas) Insurers .....	58
Foreign Insurers .....	1,487
<b>Accredited/Trusted Reinsurers</b> .....	30
<b>Charitable Gift Annuity Organizations</b> .....	178
<b>Continuing Care Facilities</b> .....	8
<b>Automobile/Motor Club Associations</b> .....	20
<b>Reinsurance Intermediaries Brokers</b> .....	17
<b>Reinsurance Intermediaries Managers</b> .....	4
<b>Service Contract Providers</b> .....	83
<b>Surplus Lines Insurers</b> .....	197
Domestic (Arkansas) .....	1
Foreign .....	134
Alien (non U.S.A.) .....	62



# AID Examinations

## Financial Examinations

Domestic Life Companies.....	3
Domestic Property & Casualty Companies .....	2
Domestic Health Maintenance Organizations.....	4
Other Domestic Organizations .....	2

## Financial Analysis (Includes Annual and Quarterly Reviews)

Domestic Financial Reviews.....	283
Domestic Supplemental Filings Reviews .....	219
Holding Company & Other Filings Reviews.....	179

## Prepaid Funeral Benefits Contracts

Examinations Conducted .....	41
Number of Licenses.....	198
Reports Reviewed.....	833

## Insurance Fraud Investigations

Referrals Received .....	1,060
Cases Referred for Prosecution .....	60
Successful Prosecutions .....	31
Fines .....	\$55,200
Restitution .....	\$216,489

## Legal Proceedings\*

Bulletins Issued .....	7
Directives Issued .....	2
Orders Issued.....	793
Rules Finalized .....	2
Investigations Initiated .....	128
Investigations Closed.....	114
Fines and Penalties.....	\$18,201
Recoveries & Restitution for Arkansas Consumers.....	\$649,494
Multi-State Settlements .....	\$2,033,778
Company Mergers .....	8
Certificate of Authority Cancellations .....	7

## Liquidations and Rehabilitations\*

### A. *Liquidations A.C.A. § 23-61-112(2).*

No original actions were filed for liquidation of any domestic Arkansas insurance companies during the reporting year of 2012.

### B. *Rehabilitations A.C.A. § 23-61-112(3).*

No original actions were filed for rehabilitation of any domestic Arkansas insurance companies during the reporting year of 2012.

\*Department Bulletins, Directives, Public Orders, Rules and Court Orders of Rehabilitation/Liquidation are now available in electronic format at [www.insurance.arkansas.gov/Legal.htm](http://www.insurance.arkansas.gov/Legal.htm).

# Insurers Listed by Arkansas Premium as of 12/31/2012

## Domestic Surplus Lines

NAIC	Company Name	AR Premium	Market Share	Assets	Liabilities	Capital & Surplus
38920	Kinsale Ins Co	\$433,971	100.00%	\$136,513,608	\$80,166,961	\$56,346,647
	<b>TOTAL</b>	<b>\$433,971</b>	<b>100.00%</b>			

## Farmers Mutual Aid Associations

NAIC	Company Name	AR Premium	Market Share	Assets	Liabilities	Capital & Surplus
14244	Farmers Mutual Ins Co (Gentry)	\$3,249,229	30.7%	\$12,566,487	\$3,019,620	\$9,546,867
14250	Farm & Home Mutual (Paragould)	\$2,794,889	26.4%	\$2,982,162	\$1,927,718	\$1,054,444
14247	Farmers Mutual Ins (Rogers)	\$1,212,778	11.4%	\$5,794,799	\$881,632	\$4,913,167
14252	Washington County Farmers Mutual Fire	\$1,082,711	10.2%	\$25,993,184	\$796,656	\$25,196,528
14246	Farmers Fire Ins Co	\$919,810	8.7%	\$1,298,682	\$662,145	\$636,537
14245	Farmers Mutual Fire (Carroll County)	\$896,211	8.5%	\$2,467,542	\$736,435	\$1,731,107
14248	Farmers Protective Ins Co	\$401,429	3.8%	\$850,703	\$272,917	\$577,786
14251	Logan County Farmers Mutual Aid	\$35,297	0.3%	\$1,953,452	\$35,297	\$1,918,155
	<b>TOTAL</b>	<b>\$10,592,354</b>	<b>100.00%</b>			

## Fraternal Organizations

NAIC	Company Name	AR Premium	Market Share	Assets	Liabilities	Capital & Surplus
57541	Modern Woodmen Of Amer	\$53,627,761	43.5%	\$12,385,909,151	\$11,053,379,336	\$1,332,529,815
57320	Woodmen World Life Ins Soc	\$28,514,942	23.1%	\$9,517,446,944	\$8,655,215,304	\$862,231,640
56014	Thrivent Financial For Lutherans	\$25,597,632	20.8%	\$68,424,647,258	\$64,038,718,163	\$4,385,929,095
58033	Knights Of Columbus	\$5,141,138	4.2%	\$19,401,741,303	\$17,565,781,957	\$1,835,959,346
58068	Independent Order Of Foresters Us Br	\$3,490,135	2.8%	\$2,859,964,829	\$2,714,440,101	\$145,524,728
57657	Royal Neighbors Of Amer	\$2,375,715	1.9%	\$831,334,324	\$624,927,407	\$206,406,917
56383	Order of United Commercial Travelers	\$2,296,618	1.9%	\$22,915,216	\$12,175,279	\$10,739,937
56499	Woodmen World Assur Life Assn	\$2,082,507	1.7%	\$59,766,168	\$47,077,120	\$12,689,048
56030	Catholic Financial Life	\$165,650	0.1%	\$1,288,204,174	\$1,257,384,450	\$30,819,724
57088	Degree Of Honor Protective Assn	\$9,798	0.0%	\$210,471,426	\$204,569,887	\$5,901,539
57223	Baptist Life Assn	\$9,235	0.0%	\$31,324,780	\$30,528,440	\$796,340
57622	Polish Natl Alliance Us Of NA	\$4,312	0.0%	\$431,443,786	\$419,424,639	\$12,019,147
56170	Womans Life Ins Society	\$534	0.0%	\$192,093,609	\$166,911,306	\$25,182,304
	<b>TOTAL</b>	<b>\$123,315,977</b>	<b>100.0%</b>			

## Health Maintenance Organizations and Hospital, Medical, Dental Insurers

NAIC	Company Name	AR Premium	Market Share	Assets	Liabilities	Capital & Surplus
95442	HMO Partners Inc	\$218,393,849	28.3%	\$148,037,295	\$38,695,687	\$109,341,608
95448	QCA Health Plan Inc	\$148,867,301	19.3%	\$39,094,684	\$26,164,182	\$12,930,502
95885	Humana Health Plan Inc	\$117,127,135	15.2%	\$645,208,799	\$337,267,023	\$307,941,776
95792	Windsor Health Plan Inc	\$115,600,026	15.0%	\$208,307,901	\$144,262,547	\$64,045,354
47155	Delta Dental Plan of AR Inc	\$103,631,421	13.4%	\$81,062,041	\$18,366,547	\$62,695,496
12282	Arkansas Comm Care Inc	\$67,745,956	8.8%	\$26,598,781	\$12,569,571	\$14,029,210
11559	American Dental Providers of AR Inc	\$243,509	0.0%	\$600,183	\$95,007	\$505,176
	<b>TOTAL</b>	<b>\$771,609,197</b>	<b>100.0%</b>			

## Life and Health

NAIC	Company Name	AR Premium	Market Share	Assets	Liabilities	Capital & Surplus
69078	Standard Security Life Ins Co Of NY	\$1,191,108	0.02%	\$371,621,645	\$265,140,218	\$106,481,427
78077	Mony Life Ins Co Of America	\$1,177,470	0.02%	\$3,830,936,190	\$3,606,452,422	\$224,483,768
31119	Medico Ins Co	\$1,145,634	0.02%	\$91,002,577	\$69,963,177	\$21,039,400
86118	Arkansas Bankers Life Ins Co	\$1,117,601	0.02%	\$4,001,160	\$1,971,079	\$2,030,081
89184	Sterling Investors Life Ins Co	\$1,112,477	0.02%	\$18,026,871	\$10,632,506	\$7,394,365
71854	AAA Life Ins Co	\$1,072,126	0.02%	\$468,390,751	\$380,558,853	\$87,831,898
92703	United Natl Life Ins Co Of America	\$1,050,470	0.02%	\$9,126,953	\$6,319,608	\$2,807,345
62324	Freedom Life Ins Co Of America	\$1,050,007	0.02%	\$34,353,061	\$20,492,341	\$13,860,720
65722	Loyal America Life Ins Co	\$1,027,927	0.02%	\$438,927,645	\$398,120,312	\$40,807,333
67652	First Penn Pacific Life Ins Co	\$1,022,617	0.02%	\$1,880,368,261	\$1,670,664,783	\$209,703,478
76023	Columbian Life Ins Co	\$1,016,523	0.02%	\$266,314,539	\$241,537,804	\$24,776,735
70629	World Ins Co	\$1,000,312	0.02%	\$275,408,951	\$171,881,571	\$103,527,380
71161	Principal Natl Life Ins Co	\$996,888	0.02%	\$65,148,473	\$7,034,659	\$58,113,814
60836	American Republic Ins Co	\$977,426	0.02%	\$538,648,651	\$279,349,000	\$259,299,651
69485	Security Natl Life Ins Co	\$973,192	0.02%	\$422,702,391	\$398,445,117	\$24,257,274
93629	Prudential Retirement Ins & Ann Co	\$951,949	0.02%	\$63,442,946,150	\$62,363,568,736	\$1,079,377,414
86355	Standard Life & Accident Ins Co	\$943,740	0.02%	\$515,062,144	\$279,562,651	\$235,499,493
61751	Central States H & L Co Of Omaha	\$931,227	0.02%	\$343,792,438	\$239,274,879	\$104,517,559
67393	Ozark Natl Life Ins Co	\$928,309	0.02%	\$690,606,966	\$571,859,047	\$118,747,919
70548	Wichita Natl Life Ins Co	\$926,040	0.02%	\$18,458,535	\$10,522,803	\$7,935,732
76325	Senior Health Ins Co of PA	\$910,421	0.02%	\$3,161,093,979	\$3,046,696,672	\$114,397,307
71390	Puritan Life Ins Co of America	\$876,484	0.02%	\$13,298,403	\$7,065,036	\$6,233,367
60763	American Pioneer Life Ins Co	\$857,732	0.02%	\$80,645,934	\$60,069,482	\$20,576,452
67180	Ohio State Life Ins Co	\$853,401	0.01%	\$12,252,078	\$2,676,460	\$9,575,618
84115	Jackson Griffin Ins Co	\$849,377	0.01%	\$10,506,087	\$9,803,871	\$702,216
61832	Chesapeake Life Ins Co	\$835,843	0.01%	\$46,967,302	\$11,243,857	\$35,723,445
93432	CM Life Ins Co	\$810,397	0.01%	\$8,388,465,820	\$7,458,476,312	\$929,989,508
91413	Western Reserve Life Assur Co of OH	\$786,317	0.01%	\$8,423,143,363	\$8,147,945,340	\$275,198,023
66087	Mid West Natl Life Ins Co Of TN	\$784,871	0.01%	\$137,807,523	\$64,084,576	\$73,722,947
81043	Bankers Life Ins Co	\$784,223	0.01%	\$94,384,095	\$77,899,196	\$16,484,899
67326	Old Surety Life Ins Co	\$782,643	0.01%	\$21,345,950	\$12,184,016	\$9,161,934
62359	Constitution Life Ins Co	\$776,816	0.01%	\$56,678,460	\$29,617,125	\$27,061,335
73474	Dentegra Ins Co	\$775,149	0.01%	\$30,283,435	\$14,525,053	\$15,758,382
83798	Memorial Ins Co Of America	\$774,495	0.01%	\$1,186,696	\$102,061	\$1,084,635
71129	Fort Dearborn Life Ins Co	\$759,100	0.01%	\$2,895,769,319	\$2,496,027,452	\$399,741,867
65781	Madison Natl Life Ins Co Inc	\$740,215	0.01%	\$686,674,688	\$616,408,261	\$70,266,427
68985	Starmount Life Ins Co	\$726,182	0.01%	\$42,002,715	\$23,660,216	\$18,342,499
70580	Humanadental Ins Co	\$724,484	0.01%	\$109,005,261	\$49,462,976	\$59,542,285
63290	Fidelity Life Assn A Legal Reserve L	\$717,672	0.01%	\$463,738,455	\$288,429,731	\$175,308,724
84786	Colorado Bankers Life Ins Co	\$713,039	0.01%	\$202,282,496	\$185,360,861	\$16,921,635
76694	London Life Reins Co	\$703,318	0.01%	\$464,407,085	\$394,548,044	\$69,859,041
12784	Bravo Health Ins Co Inc	\$693,645	0.01%	\$148,521,060	\$55,506,596	\$93,014,464
60275	American Bankers Life Assur Co Of FL	\$674,322	0.01%	\$588,079,222	\$514,312,410	\$73,766,812
69914	Sears Life Ins Co	\$646,535	0.01%	\$95,428,265	\$24,392,703	\$71,035,562
97705	Direct General Life Ins Co	\$639,687	0.01%	\$22,963,678	\$9,573,088	\$13,390,590
65811	American Modern Life Ins Co	\$638,266	0.01%	\$59,985,286	\$39,628,961	\$20,356,325
61360	Reliastar Life Ins Co Of NY	\$628,084	0.01%	\$3,307,900,098	\$3,026,375,007	\$281,525,091
61212	Baltimore Life Ins Co	\$627,105	0.01%	\$944,325,648	\$878,934,974	\$65,390,674
71471	Ability Ins Co	\$609,091	0.01%	\$840,080,873	\$792,886,448	\$47,194,426
64505	Homesteaders Life Co	\$601,629	0.01%	\$2,093,306,012	\$1,973,613,528	\$119,692,483
81418	American Medical & Life Ins Co	\$597,209	0.01%	\$23,827,378	\$15,421,135	\$8,406,243
80799	Celtic Ins Co	\$569,434	0.01%	\$68,760,964	\$43,260,211	\$25,500,753
60445	Sagikor Life Ins Co	\$562,442	0.01%	\$870,041,040	\$817,260,581	\$52,780,459
60542	American Home Life Ins Co	\$549,792	0.01%	\$216,919,637	\$200,235,101	\$16,684,536



## Life and Health (Cont.)

NAIC	Company Name	AR Premium	Market Share	Assets	Liabilities	Capital & Surplus
90557	Zurich America Life Ins Co	\$546,156	0.01%	\$12,697,091,607	\$12,528,733,149	\$168,358,458
90212	Great Southern Life Ins Co	\$541,533	0.01%	\$242,888,218	\$205,789,774	\$37,098,444
67369	Cigna Health & Life Ins Co	\$534,679	0.01%	\$713,420,136	\$169,988,956	\$543,431,180
69744	Union Labor Life Ins Co	\$524,354	0.01%	\$3,495,047,358	\$3,404,028,043	\$91,019,315
71773	American Natl Life Ins Co Of TX	\$511,647	0.01%	\$115,148,775	\$87,626,053	\$27,522,722
71072	Marquette Natl Life Ins Co	\$507,809	0.01%	\$6,257,811	\$1,112,760	\$5,145,051
93661	Annuity Investors Life Ins Co	\$501,388	0.01%	\$2,520,593,610	\$2,363,236,000	\$157,357,610
68500	Continental Life Ins Co Brentwood	\$479,275	0.01%	\$144,284,427	\$90,115,747	\$54,168,680
66842	American General Life Ins Co of DE	\$467,998	0.01%	\$9,146,118,352	\$8,695,492,913	\$450,625,439
90247	Pharmacists Life Ins Co	\$463,201	0.01%	\$66,823,483	\$60,572,983	\$6,250,500
94099	United Investors Life Ins Co	\$457,655	0.01%	\$1,495,159,690	\$1,286,851,032	\$208,308,658
84069	Smith Burial & Life Ins Co	\$439,891	0.01%	\$4,892,159	\$4,148,994	\$743,165
85928	Family Liberty Life Ins Co	\$436,900	0.01%	\$27,045,923	\$21,779,892	\$5,266,031
81353	NYLife Ins Co Of AZ	\$430,794	0.01%	\$199,662,260	\$140,122,993	\$59,539,267
69132	State Mutual Ins Co	\$425,486	0.01%	\$304,637,836	\$271,916,244	\$32,721,592
64580	Illinois Mutual Life Ins Co	\$412,588	0.01%	\$1,227,876,995	\$1,112,268,077	\$115,608,918
71404	Continental General Ins Co	\$407,683	0.01%	\$234,136,142	\$207,770,681	\$26,365,461
68594	American Amicable Life Ins Co Of TX	\$405,600	0.01%	\$446,356,544	\$388,922,429	\$57,434,115
62553	Country Life Ins Co	\$394,708	0.01%	\$8,947,433,239	\$7,946,575,524	\$1,000,857,716
63657	Garden State Life Ins Co	\$387,251	0.01%	\$115,154,551	\$73,621,452	\$41,533,099
64327	Harleysville Life Ins Co	\$378,158	0.01%	\$392,433,906	\$372,079,559	\$20,354,347
83933	Cooperative Life Ins Co	\$372,995	0.01%	\$6,385,378	\$4,288,564	\$2,096,814
93777	Household Life Ins Co	\$364,731	0.01%	\$707,100,022	\$350,265,372	\$356,834,650
62596	Union Fidelity Life Ins Co	\$356,329	0.01%	\$19,089,482,835	\$18,644,235,078	\$445,247,757
68373	American General Assur Co	\$343,257	0.01%	\$180,442,990	\$77,941,094	\$102,501,896
63487	Investors Life Ins Co N America	\$334,719	0.01%	\$705,836,167	\$661,787,336	\$44,048,831
66680	National Life Ins Co	\$332,838	0.01%	\$8,774,642,391	\$7,631,983,037	\$1,142,659,354
68047	Professional Ins Co	\$332,227	0.01%	\$104,473,521	\$83,626,987	\$20,846,534
62413	Continental Assur Co	\$321,246	0.01%	\$3,209,999,606	\$2,690,572,709	\$519,426,897
11121	Unified Life Ins Co	\$312,103	0.01%	\$150,131,277	\$130,252,502	\$19,878,775
69515	Medamerica Ins Co	\$302,854	0.01%	\$678,043,560	\$644,238,693	\$33,804,867
63819	Unity Financial Life Ins Co	\$299,948	0.01%	\$126,534,859	\$115,749,696	\$10,785,163
64238	Guaranty Income Life Ins Co	\$285,608	0.01%	\$488,913,507	\$466,990,151	\$21,923,356
67784	Philadelphia America Life Ins Co	\$281,152	0.00%	\$194,773,736	\$170,261,243	\$24,512,493
61875	Church Life Ins Corp	\$280,487	0.00%	\$254,640,190	\$216,171,752	\$38,468,438
69256	Sunamerica Life Ins Co	\$275,163	0.00%	\$13,825,380,075	\$10,918,137,667	\$2,907,242,408
69310	Surety Life Ins Co	\$274,508	0.00%	\$12,992,531	\$601,745	\$12,390,786
74799	Leaders Life Ins Co	\$271,063	0.00%	\$6,106,171	\$2,893,400	\$3,212,771
69701	Union Bankers Ins Co	\$270,686	0.00%	\$304,856,527	\$270,303,983	\$34,552,544
64939	Investors Ins Corp	\$267,760	0.00%	\$251,715,230	\$215,377,597	\$36,337,634
70435	The Savings Bank Life Ins Co Of MA	\$262,678	0.00%	\$2,395,971,590	\$2,202,463,538	\$193,508,052
61409	National Benefit Life Ins Co	\$262,010	0.00%	\$498,599,184	\$324,920,348	\$173,678,836
69922	United Home Life Ins Co	\$250,848	0.00%	\$67,044,826	\$49,911,523	\$17,133,304
67083	Manhattan Natl Life Ins Co	\$248,651	0.00%	\$197,176,138	\$186,905,201	\$10,270,937
80020	Mountain Life Ins Co	\$246,445	0.00%	\$13,084,795	\$7,249,561	\$5,835,234
61735	Central Security Life Ins Co	\$232,429	0.00%	\$78,497,213	\$70,071,165	\$8,426,048
67261	Old Republic Life Ins Co	\$214,788	0.00%	\$142,343,038	\$101,354,312	\$40,988,726
87645	United Fidelity Life Ins Co	\$204,078	0.00%	\$717,382,881	\$340,511,879	\$376,871,002
61700	Renaissance Life & Health Ins Co of Am	\$203,771	0.00%	\$49,943,679	\$16,746,669	\$33,197,010
82252	Landmark Life Ins Co	\$203,710	0.00%	\$76,702,946	\$73,279,158	\$3,423,788
93459	Pan America Assur Co	\$202,420	0.00%	\$20,953,362	\$5,018,871	\$15,934,492
73660	Directors Life Assur Co	\$199,331	0.00%	\$26,227,996	\$24,113,526	\$2,114,469
99937	Columbus Life Ins Co	\$198,439	0.00%	\$2,958,658,421	\$2,752,418,745	\$206,239,676
93440	HM Life Ins Co	\$193,773	0.00%	\$471,644,661	\$252,146,584	\$219,498,077

## Life and Health (Cont.)

NAIC	Company Name	AR Premium	Market Share	Assets	Liabilities	Capital & Surplus
83470	USable Mut Ins Co	\$1,243,359,732	21.5%	\$1,283,220,576	\$604,505,198	\$678,715,376
79413	UnitedHealthcare Ins Co	\$262,546,877	4.5%	\$14,118,278,776	\$9,406,393,266	\$4,711,885,510
12567	Care Improvement Plus S Central Ins	\$244,243,960	4.2%	\$502,425,732	\$177,849,097	\$324,576,635
73288	Humana Ins Co	\$233,692,804	4.0%	\$5,421,296,898	\$2,765,199,052	\$2,656,097,846
68241	Prudential Ins Co Of Amer	\$165,423,459	2.9%	\$285,087,048,709	\$276,388,166,983	\$8,698,881,726
65056	Jackson Natl Life Ins Co	\$159,053,664	2.8%	\$136,820,411,122	\$132,524,253,162	\$4,296,157,960
65978	Metropolitan Life Ins Co	\$132,888,552	2.3%	\$360,500,954,313	\$346,206,108,215	\$14,294,846,098
65838	John Hancock Life Ins Co (USA)	\$105,919,585	1.8%	\$227,142,176,161	\$221,348,041,009	\$5,794,135,152
69345	Teachers Ins & Ann Assoc Of Amer	\$102,860,214	1.8%	\$237,037,712,063	\$207,728,732,440	\$29,308,979,623
65676	Lincoln Natl Life Ins Co	\$93,935,183	1.6%	\$180,025,470,878	\$173,625,890,034	\$6,399,580,844
79227	Pruco Life Ins Co	\$86,702,521	1.5%	\$81,001,994,356	\$78,791,416,323	\$2,210,578,033
66869	Nationwide Life Ins Co	\$77,808,506	1.3%	\$106,577,543,255	\$102,740,909,342	\$3,836,633,913
60380	American Family Life Assur Co of Col	\$76,245,832	1.3%	\$115,346,667,994	\$106,454,909,925	\$8,891,758,069
61050	MetLife Investors USA Ins Co	\$71,895,927	1.2%	\$85,985,966,266	\$84,260,885,956	\$1,725,080,310
68896	Southern Farm Bureau Life Ins Co	\$70,873,314	1.2%	\$12,254,458,585	\$10,172,200,965	\$2,082,257,620
61271	Principal Life Ins Co	\$70,329,041	1.2%	\$130,020,070,246	\$126,075,763,518	\$3,944,306,728
60488	American Gen Life Ins Co	\$63,547,992	1.1%	\$149,627,538,167	\$138,113,053,483	\$11,514,484,684
70238	Variable Ann Life Ins Co	\$63,134,833	1.1%	\$70,614,321,051	\$66,378,800,990	\$4,235,520,061
91596	New York Life Ins & Ann Corp	\$63,088,324	1.1%	\$109,510,240,524	\$103,111,603,356	\$6,398,637,168
86231	Transamerica Life Ins Co	\$56,330,761	1.0%	\$105,497,250,961	\$100,026,687,947	\$5,470,563,014
94358	USable Life	\$56,066,329	1.0%	\$381,176,447	\$224,903,718	\$156,272,729
67660	Pennsylvania Life Ins Co	\$55,023,634	1.0%	\$1,002,046,810	\$612,438,310	\$389,608,500
67091	Northwestern Mut Life Ins Co	\$53,529,157	0.9%	\$200,945,403,906	\$184,769,630,895	\$16,175,773,011
65005	RiverSource Life Ins Co	\$53,413,623	0.9%	\$96,669,081,788	\$93,556,460,668	\$3,112,621,120
69108	State Farm Life Ins Co	\$53,169,846	0.9%	\$56,865,393,399	\$49,327,151,614	\$7,538,241,785
62944	AXA Equitable Life Ins Co	\$51,585,954	0.9%	\$144,827,240,049	\$140,137,846,235	\$4,689,393,814
90611	Allianz Life Ins Co Of N Amer	\$50,779,524	0.9%	\$94,322,876,796	\$88,990,466,426	\$5,332,410,370
67466	Pacific Life Ins Co	\$50,048,143	0.9%	\$101,000,915,366	\$94,825,814,119	\$6,175,101,247
66915	New York Life Ins Co	\$49,660,130	0.9%	\$134,726,848,122	\$118,158,309,783	\$16,568,538,339
69868	United Of Omaha Life Ins Co	\$48,918,449	0.8%	\$16,698,149,290	\$15,670,972,917	\$1,027,176,373
62235	Unum Life Ins Co Of Amer	\$48,181,242	0.8%	\$18,879,795,078	\$17,306,262,407	\$1,573,532,672
68675	Security Benefit Life Ins Co	\$47,592,824	0.8%	\$15,392,594,076	\$14,618,627,337	\$773,966,739
68136	Protective Life Ins Co	\$45,652,852	0.8%	\$36,355,340,886	\$33,371,461,031	\$2,983,879,855
95446	United Hlthcare of AR Inc	\$43,991,574	0.8%	\$15,551,530	\$6,633,994	\$8,917,536
66044	Midland Natl Life Ins Co	\$42,974,308	0.7%	\$32,851,272,210	\$30,726,946,077	\$2,124,326,133
65935	Massachusetts Mut Life Ins Co	\$41,735,177	0.7%	\$155,648,727,921	\$142,961,844,283	\$12,686,883,638
60054	Aetna Life Ins Co	\$39,092,524	0.7%	\$21,175,477,645	\$17,843,136,946	\$3,332,340,698
12231	UnitedHealthcare Ins Co of the River	\$36,994,095	0.6%	\$89,422,998	\$52,001,672	\$37,421,326
61689	Aviva Life & Ann Co	\$36,975,396	0.6%	\$51,044,172,224	\$48,175,627,794	\$2,868,544,431
70815	Hartford Life & Accident Ins Co	\$35,297,404	0.6%	\$14,404,772,034	\$8,637,475,747	\$5,767,296,287
88072	Hartford Life Ins Co	\$31,635,898	0.5%	\$140,501,384,777	\$135,485,877,275	\$5,015,507,502
71153	Hartford Life & Ann Ins Co	\$31,525,071	0.5%	\$65,710,696,001	\$62,684,481,612	\$3,026,214,389
92738	American Equity Invest Life Ins Co	\$30,717,429	0.5%	\$28,078,993,081	\$26,420,063,750	\$1,658,929,332
86509	Ing Life Ins & Ann Co	\$30,516,033	0.5%	\$78,660,052,048	\$76,738,238,723	\$1,921,813,325
62308	Connecticut Gen Life Ins Co	\$29,482,529	0.5%	\$20,921,575,381	\$17,880,697,763	\$3,040,877,618
81973	Coventry Health & Life Ins Co	\$27,586,096	0.5%	\$936,011,100	\$457,938,525	\$478,072,578
68322	Great W Life & Ann Ins Co	\$27,227,339	0.5%	\$49,029,462,345	\$47,919,964,397	\$1,109,497,948
65757	Shelter Life Ins Co	\$25,502,981	0.4%	\$1,044,800,719	\$879,412,956	\$165,387,763
70670	Health Care Serv Corp A Mut Legal Re	\$25,077,831	0.4%	\$15,517,613,693	\$5,963,865,276	\$9,553,748,416
66168	Minnesota Life Ins Co	\$22,675,583	0.4%	\$28,414,957,859	\$26,233,128,662	\$2,181,829,196
67172	Ohio Natl Life Ins Co	\$22,276,553	0.4%	\$21,631,247,430	\$20,582,931,858	\$1,048,315,575
62286	Golden Rule Ins Co	\$21,818,368	0.4%	\$782,483,247	\$490,190,818	\$292,292,429
60410	American Fidelity Assur Co	\$21,726,606	0.4%	\$4,358,084,068	\$4,049,169,023	\$308,915,043
90328	First Health Life & Health Ins Co	\$21,146,803	0.4%	\$600,155,608	\$187,953,237	\$412,202,371

## Life and Health (Cont.)

NAIC	Company Name	AR Premium	Market Share	Assets	Liabilities	Capital & Surplus
63312	Great Amer Life Ins Co	\$20,924,186	0.4%	\$16,508,610,432	\$15,233,864,320	\$1,274,746,112
70688	Transamerica Financial Life Ins Co	\$19,574,790	0.3%	\$26,958,733,787	\$26,122,718,589	\$836,015,198
62510	Equitrust Life Ins Co	\$19,111,949	0.3%	\$11,418,568,027	\$10,708,599,063	\$709,968,965
70025	Genworth Life Ins Co	\$18,907,144	0.3%	\$36,783,835,408	\$33,373,300,173	\$3,410,535,235
64246	Guardian Life Ins Co Of Amer	\$17,913,395	0.3%	\$37,530,716,596	\$32,778,703,122	\$4,752,013,475
68381	Reliance Standard Life Ins Co	\$17,157,406	0.3%	\$5,186,942,148	\$4,625,408,600	\$561,533,548
92711	HCC Life Ins Co	\$16,743,238	0.3%	\$731,234,248	\$317,506,903	\$413,727,345
67105	Reliastar Life Ins Co	\$16,637,291	0.3%	\$21,526,134,646	\$19,241,487,449	\$2,284,647,197
60534	American Heritage Life Ins Co	\$16,226,318	0.3%	\$1,710,659,697	\$1,374,849,835	\$335,809,862
92916	United Amer Ins Co	\$15,703,155	0.3%	\$1,722,783,520	\$1,466,679,254	\$256,104,266
68195	Provident Life & Accident Ins Co	\$15,690,711	0.3%	\$8,452,041,066	\$7,809,284,060	\$642,757,005
61263	Bankers Life & Cas Co	\$15,494,590	0.3%	\$14,941,303,395	\$14,026,677,951	\$914,625,444
68608	Symetra Life Ins Co	\$15,346,601	0.3%	\$25,467,845,135	\$23,555,225,822	\$1,912,619,313
65315	Liberty Life Assur Co Of Boston	\$14,201,874	0.2%	\$12,403,179,525	\$11,714,541,379	\$688,638,146
66850	National Western Life Ins Co	\$14,081,559	0.2%	\$9,164,763,018	\$8,159,996,857	\$1,004,766,161
64467	Wellcare Health Ins of IL Inc	\$13,948,576	0.2%	\$184,626,507	\$116,041,791	\$68,584,716
92622	Western Southern Life Assur Co	\$13,815,095	0.2%	\$12,387,883,093	\$11,362,158,473	\$1,025,724,620
63274	Fidelity & Guar Life Ins Co	\$13,804,798	0.2%	\$16,698,718,080	\$15,798,246,830	\$900,471,250
62626	CMFG Life Ins Co	\$13,304,876	0.2%	\$14,664,179,396	\$13,206,169,887	\$1,458,009,511
63177	Farmers New World Life Ins Co	\$13,136,290	0.2%	\$6,995,432,509	\$6,416,859,077	\$578,573,432
80942	ING USA Ann & Life Ins Co	\$13,067,158	0.2%	\$68,101,419,480	\$65,927,323,773	\$2,174,095,707
69663	USAA Life Ins Co	\$12,899,450	0.2%	\$19,647,069,853	\$17,812,771,786	\$1,834,298,067
62049	Colonial Life & Accident Ins Co	\$12,879,788	0.2%	\$2,651,418,963	\$2,116,489,755	\$534,929,208
83836	Selected Funeral & Life Ins Co	\$12,643,656	0.2%	\$162,894,657	\$138,948,159	\$23,946,498
68284	Pyramid Life Ins Co	\$12,444,621	0.2%	\$307,373,543	\$120,360,614	\$187,012,929
67644	Penn Mut Life Ins Co	\$12,422,966	0.2%	\$14,330,715,400	\$12,835,324,602	\$1,495,390,798
69019	Standard Ins Co	\$12,363,045	0.2%	\$17,250,279,968	\$16,060,014,389	\$1,190,265,579
63762	Medco Containment Life Ins Co	\$11,668,547	0.2%	\$397,247,977	\$170,554,922	\$226,693,055
93548	PHL Variable Ins Co	\$11,615,349	0.2%	\$5,657,079,869	\$5,343,615,678	\$313,464,191
65498	Life Ins Co Of N Amer	\$11,607,131	0.2%	\$6,089,359,206	\$5,204,985,732	\$884,373,474
65919	Primerica Life Ins Co	\$11,353,268	0.2%	\$1,569,720,291	\$899,286,536	\$670,433,755
80802	US Br Sun Life Assur Co of Canada	\$10,642,650	0.2%	\$17,403,404,661	\$16,365,835,728	\$1,037,568,933
65536	Genworth Life & Ann Ins Co	\$10,641,479	0.2%	\$24,030,733,178	\$21,775,401,176	\$2,255,332,002
80314	Unicare Life & Health Ins Co	\$10,556,237	0.2%	\$554,200,163	\$395,368,810	\$158,831,353
65595	Lincoln Benefit Life Co	\$10,043,646	0.2%	\$2,008,920,941	\$1,684,978,118	\$323,942,823
60739	American Natl Ins Co	\$9,931,788	0.2%	\$17,787,332,833	\$15,527,064,943	\$2,260,267,890
91472	Globe Life & Accident Ins Co	\$9,760,632	0.2%	\$3,454,370,001	\$2,976,810,855	\$477,559,146
68357	Reliable Life Ins Co	\$9,433,116	0.2%	\$20,908,743	\$8,020,160	\$12,888,583
91642	Forethought Life Ins Co	\$9,005,330	0.2%	\$6,256,052,027	\$5,794,680,411	\$461,371,616
69477	Time Ins Co	\$8,792,945	0.2%	\$645,369,685	\$439,617,747	\$205,751,938
66281	Monumental Life Ins Co	\$8,675,609	0.2%	\$31,057,181,691	\$30,245,861,473	\$811,320,218
66974	North Amer Co Life & Health Ins	\$8,235,249	0.1%	\$13,018,692,594	\$12,041,317,784	\$977,374,810
71412	Mutual Of Omaha Ins Co	\$7,728,345	0.1%	\$5,549,777,861	\$3,143,752,143	\$2,406,025,718
66583	National Guardian Life Ins Co	\$7,511,246	0.1%	\$2,532,783,821	\$2,336,420,289	\$196,363,532
92657	Nationwide Life & Ann Ins Co	\$7,304,435	0.1%	\$6,243,320,954	\$5,932,325,808	\$310,995,146
60186	Allstate Life Ins Co	\$7,174,581	0.1%	\$51,808,172,624	\$48,425,241,299	\$3,382,931,325
60895	American United Life Ins Co	\$7,071,072	0.1%	\$19,367,685,036	\$18,484,046,155	\$883,638,881
89206	Ohio Natl Life Assur Corp	\$7,017,247	0.1%	\$3,315,253,786	\$2,997,854,278	\$317,399,510
70998	Qualchoice Life & Health Ins Co Inc	\$6,850,867	0.1%	\$2,485,786	\$775,153	\$1,710,633
65021	Stonebridge Life Ins Co	\$6,803,597	0.1%	\$1,676,907,988	\$1,563,162,116	\$113,745,872
62146	Combined Ins Co Of Amer	\$6,667,308	0.1%	\$1,543,561,126	\$1,222,895,849	\$320,665,277
77968	Family Heritage Life Ins Co Of Amer	\$6,525,617	0.1%	\$571,062,288	\$508,918,004	\$62,144,284
67369	Cigna Health & Life Ins Co	\$6,427,547	0.1%	\$1,681,429,017	\$663,523,326	\$1,017,905,691
72850	United World Life Ins Co	\$6,383,270	0.1%	\$103,050,926	\$55,749,145	\$47,301,781



## Life and Health (Cont.)

NAIC	Company Name	AR Premium	Market Share	Assets	Liabilities	Capital & Surplus
93629	Prudential Retirement Ins & Ann Co	\$6,193,672	0.1%	\$69,265,265,484	\$68,193,245,509	\$1,072,019,975
70319	Washington Natl Ins Co	\$6,097,177	0.1%	\$5,247,572,006	\$4,778,191,604	\$469,380,402
12321	American Continental Ins Co	\$6,093,040	0.1%	\$98,197,380	\$40,664,320	\$57,533,060
65129	Kansas City Life Ins Co	\$5,712,122	0.1%	\$3,317,629,381	\$2,990,185,119	\$327,444,261
88668	Mutual Of Amer Life Ins Co	\$5,458,499	0.1%	\$14,643,756,855	\$13,735,844,982	\$907,911,873
12575	SilverScript Ins Co	\$5,442,163	0.1%	\$775,857,263	\$489,849,644	\$286,007,619
78778	Guardian Ins & Ann Co Inc	\$5,401,742	0.1%	\$12,073,279,292	\$11,858,182,934	\$215,096,358
64017	Jefferson Natl Life Ins Co	\$5,387,469	0.1%	\$2,258,985,434	\$2,217,509,505	\$41,475,929
83968	Citizens Fidelity Ins Co	\$5,377,626	0.1%	\$63,712,591	\$54,036,922	\$9,675,669
87726	Metlife Ins Co of CT	\$5,331,105	0.1%	\$63,750,259,793	\$58,419,266,213	\$5,330,993,580
65927	Lincoln Heritage Life Ins Co	\$5,299,862	0.1%	\$692,822,441	\$586,803,231	\$106,019,210
70939	Gerber Life Ins Co	\$5,233,120	0.1%	\$2,306,672,494	\$2,068,769,934	\$237,902,560
70335	West Coast Life Ins Co	\$5,145,924	0.1%	\$4,210,251,334	\$3,738,497,248	\$471,754,086
76112	Oxford Life Ins Co	\$5,025,472	0.1%	\$968,609,994	\$830,952,272	\$137,657,722
86630	Prudential Ann Life Assur Corp	\$4,937,177	0.1%	\$49,555,904,172	\$49,108,214,011	\$447,690,161
68543	Liberty Bankers Life Ins Co	\$4,888,498	0.1%	\$951,988,414	\$791,518,177	\$160,470,237
84034	First Guar Ins Co	\$4,693,081	0.1%	\$52,983,915	\$47,951,683	\$5,031,891
66427	MTL Ins Co	\$4,680,420	0.1%	\$1,780,808,051	\$1,691,249,911	\$89,558,140
73881	American Life & Annuity Co	\$4,423,788	0.1%	\$45,970,720	\$43,080,674	\$2,890,046
79065	Sun Life Assur Co Of Canada US	\$4,387,240	0.1%	\$42,526,371,022	\$41,290,516,993	\$1,235,854,029
68462	Reserve Natl Ins Co	\$4,337,622	0.1%	\$115,973,015	\$57,567,290	\$58,405,725
12902	Healthspring Life & Health Ins Co Inc	\$4,288,359	0.1%	\$796,241,036	\$356,922,081	\$439,318,956
61492	Athene Annuity & Life Assur Co	\$4,217,020	0.1%	\$10,481,219,285	\$10,204,304,458	\$276,914,827
65331	Liberty Natl Life Ins Co	\$4,207,900	0.1%	\$7,102,577,759	\$6,510,405,796	\$592,171,963
60076	Security Plan Life Ins Co	\$4,123,319	0.1%	\$318,518,682	\$266,101,627	\$52,417,055
61883	Central United Life Ins Co	\$3,978,137	0.1%	\$301,985,796	\$242,308,607	\$59,677,189
65528	Life Ins Co Of The Southwest	\$3,921,130	0.1%	\$10,952,026,727	\$10,326,794,483	\$625,232,244
71730	Continental Amer Ins Co	\$3,896,175	0.1%	\$343,989,747	\$206,636,860	\$137,352,887
68713	Security Life Of Denver Ins Co	\$3,863,513	0.1%	\$16,427,380,563	\$14,967,507,170	\$1,459,873,393
60577	American Income Life Ins Co	\$3,851,014	0.1%	\$2,518,322,969	\$2,298,578,571	\$219,744,398
87963	National Teachers Assoc Life Ins Co	\$3,767,637	0.1%	\$347,209,627	\$280,061,954	\$67,147,672
65242	Lafayette Life Ins Co	\$3,721,088	0.1%	\$3,322,052,611	\$3,161,322,430	\$160,730,181
94250	Banner Life Ins Co	\$3,705,115	0.1%	\$1,703,819,121	\$1,244,819,227	\$458,999,894
70106	United States Life Ins Co In NYC	\$3,699,821	0.1%	\$24,541,643,540	\$22,663,318,365	\$1,878,325,175
61301	Ameritas Life Ins Corp	\$3,582,390	0.1%	\$7,997,932,030	\$6,699,515,218	\$1,298,416,812
97055	Mega Life & Health Ins Co The	\$3,560,964	0.1%	\$288,187,064	\$194,934,235	\$93,252,829
93513	MetLife Investors Ins Co	\$3,498,012	0.1%	\$13,973,005,238	\$13,269,109,988	\$703,895,250
84174	Employees Life Co Mut	\$3,471,537	0.1%	\$553,459,823	\$518,396,022	\$35,063,801
62065	Colonial Penn Life Ins Co	\$3,367,302	0.1%	\$736,604,302	\$665,976,262	\$70,628,040
67989	American Memorial Life Ins Co	\$3,309,694	0.1%	\$2,345,820,596	\$2,242,927,724	\$102,892,872
60984	Compbenefits Ins Co	\$3,257,379	0.1%	\$54,225,986	\$11,388,095	\$42,837,891
61476	Boston Mut Life Ins Co	\$3,190,988	0.1%	\$1,138,430,655	\$1,012,440,741	\$125,989,914
61921	Citizens Security Life Ins Co	\$3,180,727	0.1%	\$21,655,313	\$9,938,085	\$11,717,227
63479	United Teacher Assoc Ins Co	\$3,176,664	0.1%	\$839,252,481	\$791,368,574	\$47,883,907
76236	Cincinnati Life Ins Co	\$3,100,398	0.1%	\$3,569,935,608	\$3,294,126,546	\$275,809,062
62952	Equitable Life & Cas Ins Co	\$3,018,432	0.1%	\$242,996,977	\$212,728,476	\$30,268,501
83607	Guggenheim Life & Ann Co	\$2,871,619	0.0%	\$9,134,037,003	\$8,643,757,700	\$490,279,302
12747	Envision Ins Co	\$2,832,863	0.0%	\$237,780,833	\$215,751,332	\$22,029,501
80578	Physicians Mut Ins Co	\$2,822,991	0.0%	\$1,829,659,460	\$963,551,729	\$866,107,731
80837	Union Central Life Ins Co	\$2,820,882	0.0%	\$7,058,947,333	\$6,566,744,548	\$492,202,785
77879	5 Star Life Ins Co	\$2,819,270	0.0%	\$243,174,093	\$190,757,281	\$52,416,812
69396	Texas Life Ins Co	\$2,774,192	0.0%	\$878,383,840	\$808,737,577	\$69,646,263
62863	Trustmark Life Ins Co	\$2,754,462	0.0%	\$367,775,791	\$201,936,428	\$165,839,363
70408	Union Security Ins Co	\$2,689,608	0.0%	\$5,015,492,121	\$4,576,644,057	\$438,848,064

## Life and Health (Cont.)

NAIC	Company Name	AR Premium	Market Share	Assets	Liabilities	Capital & Surplus
65900	Conseco Life Ins Co	\$2,681,631	0.0%	\$3,957,196,087	\$3,905,766,854	\$51,429,233
68810	Sentry Life Ins Co	\$2,668,383	0.0%	\$4,364,894,534	\$4,095,064,586	\$269,829,948
63258	Federated Life Ins Co	\$2,619,579	0.0%	\$1,309,292,607	\$1,033,404,449	\$275,888,158
61999	Americo Fin Life & Ann Ins Co	\$2,577,465	0.0%	\$3,777,829,350	\$3,375,542,879	\$402,286,471
69000	Northwestern Long Term Care Ins Co	\$2,537,922	0.0%	\$1,861,552,902	\$1,586,835,624	\$274,717,278
77828	Companion Life Ins Co	\$2,506,483	0.0%	\$203,778,055	\$83,094,837	\$120,683,218
71870	Fidelity Security Life Ins Co	\$2,488,982	0.0%	\$789,672,812	\$666,443,465	\$123,229,347
63665	General Amer Life Ins Co	\$2,462,261	0.0%	\$11,865,748,904	\$10,992,815,680	\$872,933,224
65080	John Alden Life Ins Co	\$2,378,540	0.0%	\$410,726,789	\$328,137,958	\$82,588,831
93696	Fidelity Investments Life Ins Co	\$2,289,388	0.0%	\$18,981,352,578	\$18,426,904,625	\$554,447,953
63983	United Heritage Life Ins Co	\$2,280,916	0.0%	\$504,207,017	\$451,819,185	\$52,387,831
72125	Physicians Life Ins Co	\$2,193,731	0.0%	\$1,284,977,580	\$1,169,139,668	\$115,837,912
61425	Trustmark Ins Co	\$2,191,317	0.0%	\$1,320,021,623	\$1,053,503,622	\$266,518,001
67814	Phoenix Life Ins Co	\$2,139,212	0.0%	\$13,837,170,968	\$13,043,549,208	\$793,621,760
71714	Berkshire Life Ins Co of Amer	\$2,106,771	0.0%	\$3,209,248,070	\$2,665,884,842	\$543,363,227
74900	Brokers Natl Life Assur Co	\$2,090,953	0.0%	\$25,697,171	\$6,568,256	\$19,128,915
81108	United Security Life & Health Ins Co	\$2,070,768	0.0%	\$19,526,670	\$15,716,048	\$3,810,622
98205	National Found Life Ins Co	\$2,063,470	0.0%	\$29,197,039	\$19,475,289	\$9,721,750
62928	EMC Natl Life Co	\$1,970,822	0.0%	\$1,053,131,664	\$970,944,311	\$82,187,353
67598	Paul Revere Life Ins Co	\$1,966,861	0.0%	\$4,458,163,857	\$4,089,880,401	\$368,283,456
83860	American Home Life Ins Co	\$1,954,995	0.0%	\$17,604,635	\$17,186,479	\$418,156
61212	Baltimore Life Ins Co	\$1,949,796	0.0%	\$1,004,611,726	\$934,192,024	\$70,419,702
64211	Guarantee Trust Life Ins Co	\$1,949,503	0.0%	\$325,015,658	\$280,770,822	\$44,244,836
60445	Sagcor Life Ins Co	\$1,930,986	0.0%	\$1,099,904,338	\$1,039,816,417	\$60,087,921
93262	Penn Ins & Ann Co	\$1,919,352	0.0%	\$2,026,968,321	\$1,836,541,305	\$190,427,016
77399	Sterling Life Ins Co	\$1,900,554	0.0%	\$224,754,125	\$136,048,542	\$88,705,583
62324	Freedom Life Ins Co Of Amer	\$1,870,774	0.0%	\$41,529,881	\$21,895,792	\$19,634,090
31119	Medico Ins Co	\$1,854,667	0.0%	\$55,131,094	\$23,585,288	\$31,545,806
80926	Sun Life & Health Ins Co	\$1,809,858	0.0%	\$64,634,399	\$16,580,382	\$48,054,017
63053	Family Life Ins Co	\$1,800,531	0.0%	\$147,370,296	\$115,631,469	\$31,738,827
65110	Kanawha Ins Co	\$1,746,782	0.0%	\$1,456,802,698	\$1,201,307,131	\$255,495,567
84530	US Financial Life Ins Co	\$1,702,621	0.0%	\$628,907,455	\$565,749,243	\$63,158,212
66214	Heartland Natl Life Ins Co	\$1,621,656	0.0%	\$8,438,186	\$4,508,319	\$3,929,867
67199	Old Amer Ins Co	\$1,618,189	0.0%	\$242,973,952	\$222,998,970	\$19,974,986
64513	Horace Mann Life Ins Co	\$1,550,355	0.0%	\$6,302,521,377	\$5,954,827,465	\$347,693,912
65412	Life Ins Co Of AL	\$1,499,828	0.0%	\$102,594,476	\$73,239,511	\$29,354,965
81779	Individual Assur Co Life Health & Acc	\$1,446,006	0.0%	\$19,340,266	\$14,571,225	\$4,769,041
81043	Bankers Life Ins Co	\$1,408,302	0.0%	\$177,310,199	\$156,116,621	\$21,193,578
60142	TIAA Cref Life Ins Co	\$1,383,813	0.0%	\$5,656,326,641	\$5,243,395,714	\$412,930,927
60801	American Public Life Ins Co	\$1,383,379	0.0%	\$75,106,688	\$56,400,374	\$18,706,314
69930	United Ins Co Of Amer	\$1,373,870	0.0%	\$3,550,267,089	\$3,086,193,324	\$464,073,765
74365	Southern Pioneer Life Ins Co	\$1,369,599	0.0%	\$22,083,484	\$9,195,726	\$12,887,758
71439	Assurity Life Ins Co	\$1,344,225	0.0%	\$2,419,235,295	\$2,156,533,706	\$262,701,592
69485	Security Natl Life Ins Co	\$1,292,593	0.0%	\$464,302,112	\$434,473,380	\$29,828,732
78077	Mony Life Ins Co Of Amer	\$1,267,657	0.0%	\$3,935,955,401	\$3,654,025,968	\$281,929,433
92703	United Natl Life Ins Co Of Amer	\$1,265,897	0.0%	\$11,363,212	\$8,200,536	\$3,162,676
71854	AAA Life Ins Co	\$1,251,648	0.0%	\$502,835,265	\$405,377,084	\$97,458,181
97136	Metropolitan Tower Life Ins Co	\$1,250,236	0.0%	\$5,055,587,468	\$4,274,239,313	\$781,348,155
66370	Mony Life Ins Co	\$1,248,280	0.0%	\$8,441,060,278	\$7,821,496,462	\$619,563,816
86118	Arkansas Bankers Life Ins Co	\$1,247,195	0.0%	\$3,692,927	\$1,819,983	\$1,872,944
64890	Berkley Life & Health Ins Co	\$1,233,614	0.0%	\$148,738,849	\$65,392,602	\$83,346,247
67326	Old Surety Life Ins Co	\$1,204,297	0.0%	\$22,505,610	\$13,016,802	\$9,488,809
91626	New England Life Ins Co	\$1,201,827	0.0%	\$10,601,354,933	\$10,062,718,547	\$538,636,386
63967	Government Personnel Mut Life Ins Co	\$1,191,448	0.0%	\$833,747,400	\$728,904,592	\$104,842,808

## Life and Health (Cont.)

NAIC	Company Name	AR Premium	Market Share	Assets	Liabilities	Capital & Surplus
66141	Health Net Life Ins Co	\$1,185,414	0.0%	\$631,952,773	\$266,340,078	\$365,612,695
68845	Shenandoah Life Ins Co	\$1,185,069	0.0%	\$1,379,868,229	\$1,292,696,254	\$87,171,975
83992	Foundation Life Ins Co Of AR	\$1,165,389	0.0%	\$5,907,735	\$4,262,748	\$1,644,987
70548	Wichita Natl Life Ins Co	\$1,155,704	0.0%	\$18,345,995	\$10,422,858	\$7,923,137
91529	Unimerica Ins Co	\$1,149,851	0.0%	\$326,579,082	\$173,381,373	\$153,197,709
67539	Pan Amer Life Ins Co	\$1,147,105	0.0%	\$1,444,407,080	\$1,217,843,370	\$226,563,710
69116	State Life Ins Co	\$1,012,049	0.0%	\$4,597,488,459	\$4,291,302,222	\$306,186,237
76023	Columbian Life Ins Co	\$1,005,673	0.0%	\$274,799,084	\$254,649,048	\$20,150,036
67652	First Penn Pacific Life Ins Co	\$1,000,354	0.0%	\$1,897,267,995	\$1,639,769,440	\$257,498,555
70580	Humanadental Ins Co	\$979,887	0.0%	\$120,362,571	\$59,659,952	\$60,702,619
80799	Celtic Ins Co	\$967,427	0.0%	\$99,966,561	\$56,218,054	\$43,748,507
61751	Central States H & L Co Of Omaha	\$957,503	0.0%	\$371,957,081	\$260,957,591	\$110,999,490
89184	Sterling Investors Life Ins Co	\$957,185	0.0%	\$17,123,756	\$10,654,501	\$6,469,256
65722	Loyal Amer Life Ins Co	\$940,226	0.0%	\$283,319,643	\$198,007,712	\$85,311,931
67393	Ozark Natl Life Ins Co	\$929,589	0.0%	\$711,375,219	\$589,314,937	\$122,060,282
61832	Chesapeake Life Ins Co	\$906,386	0.0%	\$36,224,707	\$12,914,276	\$23,310,431
63290	Fidelity Life Assn A Legal Reserve L	\$890,260	0.0%	\$441,659,795	\$305,868,031	\$135,791,764
61190	Auto Owners Life Ins Co	\$877,258	0.0%	\$3,297,135,135	\$3,019,660,652	\$277,474,483
97721	Thrivent Life Ins Co	\$876,682	0.0%	\$3,283,786,832	\$3,115,966,981	\$167,819,851
93432	CM Life Ins Co	\$861,916	0.0%	\$8,594,343,893	\$7,633,504,646	\$960,839,247
68985	Starmount Life Ins Co	\$852,521	0.0%	\$45,317,596	\$25,789,145	\$19,528,451
64505	Homesteaders Life Co	\$827,933	0.0%	\$2,249,020,119	\$2,116,527,887	\$132,492,232
69078	Standard Security Life Ins Co Of NY	\$825,670	0.0%	\$239,503,850	\$123,222,124	\$116,281,726
76325	Senior Health Ins Co of PA	\$823,370	0.0%	\$3,080,745,346	\$2,975,278,318	\$105,467,028
93661	Annuity Investors Life Ins Co	\$818,855	0.0%	\$2,693,806,433	\$2,515,301,389	\$178,505,044
73474	Dentegra Ins Co	\$815,854	0.0%	\$33,302,434	\$10,260,934	\$23,041,500
67180	Ohio State Life Ins Co	\$804,437	0.0%	\$13,339,335	\$3,489,611	\$9,849,724
91413	Western Reserve Life Assur Co of OH	\$784,282	0.0%	\$8,600,826,766	\$8,281,591,592	\$319,235,174
71129	Dearborn Natl Life Ins Co	\$780,394	0.0%	\$2,620,983,857	\$2,218,223,466	\$402,760,391
84115	Jackson Griffin Ins Co	\$774,865	0.0%	\$10,484,162	\$9,781,062	\$703,100
86355	Standard Life & Accident Ins Co	\$764,936	0.0%	\$527,782,397	\$271,966,622	\$255,815,775
62359	Constitution Life Ins Co	\$761,515	0.0%	\$57,442,496	\$29,033,610	\$28,408,886
84786	Colorado Bankers Life Ins Co	\$742,526	0.0%	\$232,476,528	\$205,007,266	\$27,469,262
83798	Memorial Ins Co Of Amer	\$738,088	0.0%	\$1,190,972	\$106,905	\$1,084,067
71390	Puritan Life Ins Co of Amer	\$728,374	0.0%	\$14,133,366	\$6,807,918	\$7,325,449
90557	Zurich Amer Life Ins Co	\$724,432	0.0%	\$12,767,356,282	\$12,598,756,487	\$168,599,795
74780	Integrity Life Ins Co	\$692,409	0.0%	\$5,988,264,089	\$5,388,573,272	\$599,690,817
60542	American Home Life Ins Co	\$651,500	0.0%	\$228,123,948	\$211,532,321	\$16,591,627
60763	American Pioneer Life Ins Co	\$649,066	0.0%	\$81,031,420	\$62,785,419	\$18,246,001
65781	Madison Natl Life Ins Co Inc	\$618,729	0.0%	\$689,695,023	\$617,390,666	\$72,304,357
66087	Mid West Natl Life Ins Co Of TN	\$599,820	0.0%	\$103,530,400	\$46,168,004	\$57,362,396
60275	American Bankers Life Assur Co Of FL	\$596,738	0.0%	\$553,798,165	\$486,463,780	\$67,334,385
69914	Sears Life Ins Co	\$588,651	0.0%	\$46,756,387	\$26,127,378	\$20,629,009
97705	Direct Gen Life Ins Co	\$576,810	0.0%	\$22,815,761	\$9,087,708	\$13,728,053
65811	American Modern Life Ins Co	\$551,467	0.0%	\$58,821,838	\$35,754,219	\$23,067,619
71471	Ability Ins Co	\$535,643	0.0%	\$805,255,932	\$756,223,369	\$49,032,563
61360	Reliastar Life Ins Co Of NY	\$519,277	0.0%	\$3,232,374,805	\$2,891,756,805	\$340,618,000
69744	Union Labor Life Ins Co	\$515,866	0.0%	\$2,905,907,751	\$2,809,030,776	\$96,876,975
90212	Great Southern Life Ins Co	\$512,990	0.0%	\$233,128,115	\$194,314,684	\$38,813,431
60836	American Republic Ins Co	\$498,059	0.0%	\$522,675,061	\$236,313,478	\$286,361,583
67784	Philadelphia Amer Life Ins Co	\$493,525	0.0%	\$197,617,731	\$171,518,141	\$26,099,590
84824	Commonwealth Ann & Life Ins Co	\$488,356	0.0%	\$9,089,777,331	\$8,762,382,778	\$327,394,553
76694	London Life Reins Co	\$483,047	0.0%	\$424,557,412	\$357,337,759	\$67,219,653
83933	Cooperative Life Ins Co	\$465,740	0.0%	\$6,538,890	\$4,421,722	\$2,117,168



## Life and Health (Cont.)

NAIC	Company Name	AR Premium	Market Share	Assets	Liabilities	Capital & Surplus
64580	Illinois Mut Life Ins Co	\$440,488	0.0%	\$1,289,064,746	\$1,144,854,183	\$144,210,563
71773	American Natl Life Ins Co Of TX	\$436,178	0.0%	\$133,495,579	\$94,315,259	\$39,180,320
85928	Family Liberty Life Ins Co	\$433,803	0.0%	\$26,228,187	\$22,269,009	\$3,959,178
84069	Smith Burial & Life Ins Co	\$432,806	0.0%	\$4,875,913	\$4,211,680	\$664,233
81418	American Medical & Life Ins Co	\$426,132	0.0%	\$24,235,730	\$17,753,303	\$6,482,427
71072	Marquette Natl Life Ins Co	\$424,950	0.0%	\$6,670,775	\$1,103,817	\$5,566,958
68594	American Amicable Life Ins Co Of TX	\$424,768	0.0%	\$235,840,678	\$170,904,573	\$64,936,105
81353	NYLife Ins Co Of AZ	\$412,211	0.0%	\$197,130,101	\$138,112,041	\$59,018,060
71161	Principal Natl Life Ins Co	\$408,368	0.0%	\$84,920,031	\$14,147,891	\$70,772,141
71404	Continental Gen Ins Co	\$397,177	0.0%	\$231,874,753	\$211,399,906	\$20,474,847
62553	Country Life Ins Co	\$381,666	0.0%	\$9,553,048,865	\$8,525,697,745	\$1,027,351,120
93777	Household Life Ins Co	\$364,707	0.0%	\$432,055,983	\$366,581,228	\$65,474,755
74799	Leaders Life Ins Co	\$363,407	0.0%	\$6,803,289	\$3,403,605	\$3,399,684
69132	State Mut Ins Co	\$358,839	0.0%	\$297,975,025	\$268,601,860	\$29,373,165
63657	Garden State Life Ins Co	\$354,145	0.0%	\$116,500,727	\$71,578,457	\$44,922,270
11121	Unified Life Ins Co	\$344,883	0.0%	\$170,599,885	\$150,239,632	\$20,360,253
63487	Investors Life Ins Co N Amer	\$342,814	0.0%	\$691,702,846	\$645,967,625	\$45,735,221
68500	Continental Life Ins Co Brentwood	\$338,012	0.0%	\$175,599,531	\$95,444,027	\$80,155,504
70435	The Savings Bank Life Ins Co Of MA	\$337,365	0.0%	\$2,406,465,187	\$2,203,668,453	\$202,796,734
85561	Perico Life Ins Co	\$321,222	0.0%	\$55,174,530	\$5,093,651	\$50,080,879
69515	Medamerica Ins Co	\$320,490	0.0%	\$733,679,958	\$705,026,351	\$28,653,607
64327	Harleysville Life Ins Co	\$320,253	0.0%	\$405,508,894	\$383,858,964	\$21,649,930
62596	Union Fidelity Life Ins Co	\$312,917	0.0%	\$19,585,344,071	\$19,025,203,561	\$560,140,508
66680	National Life Ins Co	\$310,318	0.0%	\$8,855,824,613	\$7,568,768,498	\$1,287,056,116
62413	Continental Assur Co	\$308,915	0.0%	\$3,094,641,839	\$2,538,425,363	\$556,216,476
82252	Landmark Life Ins Co	\$304,420	0.0%	\$43,871,593	\$39,274,114	\$4,597,479
80659	US Business of Canada Life Assur Co	\$294,738	0.0%	\$4,766,671,266	\$4,601,488,273	\$165,182,993
69922	United Home Life Ins Co	\$289,846	0.0%	\$71,620,586	\$53,939,055	\$17,681,532
68047	Professional Ins Co	\$268,846	0.0%	\$108,575,994	\$79,954,627	\$28,621,367
69310	Surety Life Ins Co	\$267,833	0.0%	\$13,830,267	\$1,246,044	\$12,584,224
61409	National Benefit Life Ins Co	\$254,284	0.0%	\$489,127,195	\$313,177,504	\$175,949,691
68721	Security Life Ins Co Of Amer	\$251,836	0.0%	\$79,072,643	\$57,461,286	\$21,611,354
61581	Capitol Life Ins Co	\$251,517	0.0%	\$231,146,432	\$211,425,636	\$19,720,796
90247	Pharmacists Life Ins Co	\$240,950	0.0%	\$83,297,142	\$77,368,726	\$5,928,416
99937	Columbus Life Ins Co	\$239,272	0.0%	\$3,011,214,902	\$2,796,441,624	\$214,773,278
63819	Unity Financial Life Ins Co	\$235,111	0.0%	\$146,771,043	\$135,800,527	\$10,970,516
67083	Manhattan Natl Life Ins Co	\$233,765	0.0%	\$188,760,839	\$176,961,865	\$11,798,974
60025	Express Scripts Ins Co	\$229,096	0.0%	\$80,589,512	\$62,607,359	\$17,982,153
61875	Church Life Ins Corp	\$228,574	0.0%	\$279,136,415	\$235,997,349	\$43,139,066
69701	Union Bankers Ins Co	\$224,171	0.0%	\$310,530,930	\$264,927,110	\$45,603,820
80020	Mountain Life Ins Co	\$220,583	0.0%	\$11,993,735	\$6,727,019	\$5,266,716
61735	Central Security Life Ins Co	\$219,070	0.0%	\$76,380,662	\$67,688,281	\$8,692,384
61700	Renaissance Life & Health Ins Co of Am	\$211,282	0.0%	\$53,323,883	\$15,254,798	\$38,069,085
93440	HM Life Ins Co	\$207,856	0.0%	\$491,291,850	\$241,310,783	\$249,981,067
79022	Transamerica Advisors Life Ins Co	\$204,145	0.0%	\$10,031,805,127	\$9,395,646,899	\$636,158,228
67261	Old Republic Life Ins Co	\$198,583	0.0%	\$138,392,065	\$97,756,281	\$40,635,784
67148	Occidental Life Ins Co Of NC	\$195,889	0.0%	\$246,878,345	\$218,915,927	\$27,962,418
61182	Aurora Natl Life Assur Co	\$195,721	0.0%	\$3,007,124,370	\$2,638,453,222	\$368,671,148
61859	Christian Fidelity Life Ins Co	\$192,599	0.0%	\$77,895,159	\$49,852,937	\$28,042,222
87645	United Fidelity Life Ins Co	\$183,383	0.0%	\$730,098,556	\$333,199,464	\$396,899,092
67873	Pioneer Amer Ins Co	\$182,348	0.0%	\$34,812,774	\$30,025,991	\$4,786,783
73660	Directors Life Assur Co	\$179,337	0.0%	\$27,115,326	\$24,993,040	\$2,122,286
70629	World Ins Co	\$176,700	0.0%	\$322,211,619	\$206,612,351	\$115,599,268
64238	Guaranty Income Life Ins Co	\$175,838	0.0%	\$476,719,533	\$453,472,166	\$23,247,367

## Life and Health (Cont.)

NAIC	Company Name	AR Premium	Market Share	Assets	Liabilities	Capital & Surplus
74918	Kilpatrick Life Ins Co	\$175,572	0.0%	\$175,675,713	\$169,436,926	\$6,238,787
61239	Bankers Fidelity Life Ins Co	\$173,384	0.0%	\$128,671,502	\$95,612,106	\$33,059,396
93459	Pan Amer Assur Co	\$172,288	0.0%	\$21,454,972	\$5,259,591	\$16,195,380
70483	Western & Southern Life Ins Co	\$170,730	0.0%	\$8,612,311,473	\$4,883,774,664	\$3,728,536,809
99775	Funeral Directors Life Ins Co	\$163,205	0.0%	\$884,159,075	\$803,613,621	\$80,545,454
70130	Universal Guar Life Ins Co	\$151,653	0.0%	\$360,577,897	\$328,334,808	\$32,243,089
68160	Balboa Life Ins Co	\$145,514	0.0%	\$56,771,854	\$12,663,651	\$44,108,204
69973	United Life Ins Co	\$142,472	0.0%	\$1,675,711,474	\$1,516,991,269	\$158,720,205
64939	Investors Ins Corp	\$137,704	0.0%	\$141,015,384	\$107,029,625	\$33,985,759
78662	Senior Life Ins Co	\$134,252	0.0%	\$43,775,491	\$34,604,002	\$9,171,489
67628	Pekin Life Ins Co	\$118,715	0.0%	\$1,209,239,001	\$1,090,042,256	\$119,196,744
66265	Monarch Life Ins Co	\$102,700	0.0%	\$753,487,745	\$748,459,158	\$5,028,585
77720	LifeSecure Ins Co	\$102,281	0.0%	\$174,904,319	\$151,133,097	\$23,771,222
80705	US Br Great West Life Assur Co	\$94,624	0.0%	\$86,729,745	\$63,870,780	\$22,858,965
72222	Amica Life Ins Co	\$93,147	0.0%	\$1,099,501,370	\$897,446,774	\$202,054,596
84018	Fidelity Standard Life Ins Co	\$93,028	0.0%	\$1,881,704	\$1,438,423	\$443,281
93734	Phoenix Life & Ann Co	\$85,352	0.0%	\$48,203,894	\$24,086,077	\$24,117,817
61727	Central Reserve Life Ins Co	\$85,239	0.0%	\$30,087,316	\$2,638,857	\$27,448,459
79057	Southland Natl Ins Corp	\$84,421	0.0%	\$176,557,658	\$166,865,821	\$9,691,837
80985	4 Ever Life Ins Co	\$83,273	0.0%	\$187,173,923	\$102,780,714	\$84,393,209
62880	AXA Equitable Life & Ann Co	\$76,870	0.0%	\$526,441,667	\$461,595,165	\$64,846,502
70173	Universal Underwriters Life Ins Co	\$74,464	0.0%	\$150,349,091	\$129,950,676	\$20,398,415
76503	Port O Call Life Ins Co	\$71,434	0.0%	\$796,023	\$186,906	\$609,117
71463	CICA Life Ins Co of Amer	\$70,576	0.0%	\$629,611,359	\$575,790,798	\$53,820,561
88536	Protective Life & Annuity Ins Co	\$68,415	0.0%	\$2,133,905,047	\$1,927,555,853	\$206,349,194
71323	Zale Life Ins Co	\$65,516	0.0%	\$10,871,446	\$2,136,458	\$8,734,988
69566	Trans World Assur Co	\$64,590	0.0%	\$346,344,436	\$273,128,747	\$73,215,689
84042	Higginbotham Burial Ins Co	\$64,113	0.0%	\$1,376,877	\$1,184,480	\$192,397
70416	MML Bay State Life Ins Co	\$62,945	0.0%	\$4,489,157,158	\$4,292,929,657	\$196,227,501
69272	Sunset Life Ins Co Of Amer	\$59,880	0.0%	\$368,116,770	\$335,479,717	\$32,637,056
94218	Country Investors Life Assur Co	\$53,558	0.0%	\$260,844,241	\$91,680,342	\$169,163,899
60704	Wilton Reassur Life Co of NY	\$51,138	0.0%	\$883,962,538	\$765,640,054	\$118,322,479
67946	Pioneer Security Life Ins Co	\$48,803	0.0%	\$89,597,585	\$16,536,445	\$73,061,140
68772	Security Mut Life Ins Co Of NY	\$46,400	0.0%	\$2,624,983,288	\$2,504,903,382	\$120,079,906
64904	Investors Heritage Life Ins Co	\$46,257	0.0%	\$457,940,341	\$437,361,200	\$20,579,141
68039	Presidential Life Ins Co	\$43,289	0.0%	\$3,454,840,557	\$3,239,315,011	\$215,525,546
66540	National Farmers Union Life Ins Co	\$42,881	0.0%	\$225,873,198	\$183,448,578	\$42,424,620
93742	Securian Life Ins Co	\$41,301	0.0%	\$190,102,930	\$55,228,547	\$134,874,383
67911	Pioneer Mut Life Ins Co	\$39,845	0.0%	\$492,207,698	\$451,062,951	\$41,144,747
61395	Beneficial Life Ins Co	\$39,346	0.0%	\$3,090,327,857	\$2,544,343,468	\$545,984,389
60518	American Health & Life Ins Co	\$33,469	0.0%	\$971,996,766	\$737,344,686	\$234,652,080
60429	American Fidelity Life Ins Co	\$31,743	0.0%	\$450,469,062	\$380,497,289	\$69,971,773
82082	Citizens Natl Life Ins Co	\$31,209	0.0%	\$13,158,810	\$10,341,860	\$2,816,950
80896	Centre Life Ins Co	\$30,977	0.0%	\$1,815,075,124	\$1,716,319,383	\$98,755,742
67601	Paul Revere Variable Ann Ins Co	\$28,963	0.0%	\$53,552,782	\$15,069,707	\$38,483,075
61069	Anthem Life Ins Co	\$26,850	0.0%	\$565,434,906	\$478,045,735	\$87,389,171
83984	New Found Life Ins Co	\$25,953	0.0%	\$2,048,435	\$358,358	\$1,690,077
68209	Provident Life & Cas Ins Co	\$24,010	0.0%	\$777,626,926	\$631,734,732	\$145,892,193
60250	AmFirst Ins Co	\$21,392	0.0%	\$23,312,817	\$6,393,864	\$16,918,953
93610	John Hancock Life & Health Ins Co	\$21,088	0.0%	\$10,039,510,749	\$9,374,659,675	\$664,851,074
42129	United Security Assur Co Of PA	\$21,031	0.0%	\$142,876,080	\$126,804,192	\$16,071,888
69140	First Allmerica Fin Life Ins Co	\$20,742	0.0%	\$2,898,256,141	\$2,772,898,400	\$125,357,741
84522	Auto Club Life Ins Co	\$20,304	0.0%	\$475,811,016	\$412,148,736	\$63,662,280
65870	Manhattan Life Ins Co	\$18,704	0.0%	\$320,816,059	\$281,396,490	\$39,419,569

## Life and Health (Cont.)

NAIC	Company Name	AR Premium	Market Share	Assets	Liabilities	Capital & Surplus
69779	Union Natl Life Ins Co	\$18,216	0.0%	\$17,784,425	\$4,007,052	\$13,777,373
85766	United Concordia Ins Co	\$16,438	0.0%	\$56,919,468	\$23,168,432	\$33,751,036
67903	Provident Amer Life & Health Ins Co	\$15,852	0.0%	\$23,621,177	\$3,283,719	\$20,337,458
66109	Midwestern United Life Ins Co	\$15,576	0.0%	\$242,107,858	\$122,038,428	\$120,069,430
97764	Idealife Ins Co	\$15,265	0.0%	\$19,697,014	\$4,928,905	\$14,768,109
97241	Settlers Life Ins Co	\$14,225	0.0%	\$378,289,825	\$328,733,863	\$49,555,962
63223	Federal Life Ins Co	\$14,220	0.0%	\$220,143,887	\$201,159,602	\$18,984,286
86959	National Family Care Life Ins Co	\$13,615	0.0%	\$15,814,930	\$6,759,009	\$9,055,921
81442	Monitor Life Ins Co Of NY	\$12,978	0.0%	\$15,248,245	\$7,767,927	\$7,480,318
72613	USAA Direct Life Ins Co	\$12,819	0.0%	\$21,971,979	\$534,753	\$21,437,226
68632	Vantis Life Ins Co	\$12,543	0.0%	\$899,707,060	\$829,383,195	\$70,323,865
62103	Columbian Mut Life Ins Co	\$10,471	0.0%	\$1,251,105,705	\$1,161,621,747	\$89,483,958
14406	Industrial Alliance Ins & Fin Serv I	\$10,438	0.0%	\$221,298,617	\$137,920,159	\$83,378,458
97691	Life Of The South Ins Co	\$10,158	0.0%	\$72,180,551	\$56,934,377	\$15,246,176
62057	Lincoln Life & Ann Co of NY	\$9,957	0.0%	\$10,925,489,739	\$10,277,092,962	\$648,396,777
76007	Old United Life Ins Co	\$9,595	0.0%	\$82,341,783	\$38,446,165	\$43,895,619
84107	Griffin Leggett Burial Ins Co	\$8,780	0.0%	\$114,737	\$393	\$114,344
60003	Park Avenue Life Ins Co	\$8,634	0.0%	\$309,919,513	\$252,243,461	\$57,676,051
65951	Merit Life Ins Co	\$7,396	0.0%	\$549,045,633	\$303,598,963	\$245,446,670
91693	IA Amer Life Ins Co	\$7,215	0.0%	\$205,549,541	\$99,231,897	\$106,317,638
86126	Members Life Ins Co	\$5,526	0.0%	\$19,804,319	\$2,809,735	\$16,994,585
81426	Commercial Travelers Mut Ins Co	\$5,138	0.0%	\$29,125,939	\$26,358,499	\$2,767,440
62421	Heritage Union Life Ins Co	\$4,904	0.0%	\$7,540,074	\$375,507	\$7,164,561
94447	Century Life Ass Co	\$4,527	0.0%	\$12,238,759	\$6,085,340	\$6,153,419
69647	Catamaran Ins of Ohio Inc	\$4,514	0.0%	\$8,881,028	\$273,392	\$8,607,636
68446	Longevity Ins Co	\$4,423	0.0%	\$8,598,458	\$742,485	\$7,855,973
63495	First Investors Life Ins Co	\$4,309	0.0%	\$1,341,125,230	\$1,294,599,834	\$46,525,396
82538	National Health Ins Co	\$2,869	0.0%	\$11,316,185	\$2,212,766	\$9,103,419
90638	Best Life & Health Ins Co	\$2,835	0.0%	\$14,535,506	\$4,880,090	\$9,655,416
77119	Sentinel Amer Life Ins Co	\$2,294	0.0%	\$33,321,384	\$28,938,349	\$4,383,034
70955	USA Life One Ins Co Of IN	\$2,000	0.0%	\$36,999,916	\$20,814,766	\$16,185,150
86371	Ullico Life Ins Co	\$1,926	0.0%	\$12,369,016	\$792,978	\$11,576,038
70742	Family Benefit Life Ins Co	\$1,112	0.0%	\$62,916,496	\$52,436,922	\$10,479,574
79049	Alfa Life Ins Corp	\$1,073	0.0%	\$1,295,446,088	\$1,093,027,032	\$202,419,057
90581	Symetra Natl Life Ins Co	\$1,025	0.0%	\$16,618,186	\$7,109,010	\$9,509,176
84077	Southern Fidelity Life Ins Co	\$782	0.0%	\$81,601	\$11,199	\$70,402
62634	Delaware Amer Life Ins Co	\$630	0.0%	\$128,725,982	\$74,122,191	\$54,603,791
64831	Intramercia Life Ins Co	\$575	0.0%	\$31,386,660	\$21,861,339	\$9,525,321
82880	CSI Life Ins Co	\$516	0.0%	\$17,544,095	\$3,650,531	\$13,893,564
85286	OneNation Ins Co	\$487	0.0%	\$83,040,133	\$1,260,751	\$81,779,382
85189	Investors Consolidated Ins Co	\$339	0.0%	\$15,332,099	\$7,901,180	\$7,430,919
73504	Generation Life Ins Co	\$94	0.0%	\$26,060,073	\$720,519	\$25,339,554
88366	American Retirement Life Ins Co	\$85	0.0%	\$5,669,908	\$233,104	\$5,436,804
	<b>TOTAL</b>	<b>\$5,783,493,312</b>	<b>100.0%</b>			



## *Property and Casualty*

NAIC	Company Name	AR Premium	Market Share	Assets	Liabilities	Capital & Surplus
25178	State Farm Mut Auto Ins Co	\$346,087,449	8.4%	\$114,933,159,164	\$49,691,256,542	\$65,241,902,623
13757	Farm Bureau Mut Ins Co Of AR Inc	\$240,803,641	5.8%	\$294,125,977	\$167,584,250	\$126,541,727
25143	State Farm Fire & Cas Co	\$240,644,982	5.8%	\$28,999,078,166	\$20,193,715,707	\$8,805,362,459
18325	Southern Farm Bureau Cas Ins Co	\$222,238,486	5.4%	\$1,899,237,304	\$738,127,271	\$1,161,110,033
23388	Shelter Mut Ins Co	\$214,611,908	5.2%	\$2,490,314,265	\$1,092,425,998	\$1,397,888,266
21628	Farmers Ins Co Inc	\$120,235,618	2.9%	\$281,806,819	\$183,294,430	\$98,512,389
17230	Allstate Prop & Cas Ins Co	\$95,254,639	2.3%	\$204,398,932	\$6,561,044	\$197,837,888
19445	National Union Fire Ins Co Of Pitts	\$63,906,326	1.5%	\$32,520,798,197	\$18,121,894,376	\$14,398,903,821
42919	Progressive Northwestern Ins Co	\$61,982,442	1.5%	\$1,207,215,853	\$859,885,629	\$347,330,224
19232	Allstate Ins Co	\$61,175,541	1.5%	\$42,133,104,688	\$25,872,226,858	\$16,260,877,830
20443	Continental Cas Co	\$59,648,324	1.4%	\$41,292,197,226	\$31,293,843,271	\$9,998,353,955
23787	Nationwide Mut Ins Co	\$54,593,486	1.3%	\$29,551,792,548	\$18,207,794,359	\$11,343,998,189
25941	United Serv Automobile Assn	\$50,285,062	1.2%	\$25,880,688,984	\$7,517,801,149	\$18,362,887,835
27998	Travelers Home & Marine Ins Co	\$48,975,341	1.2%	\$412,274,926	\$298,815,610	\$113,459,316
10677	Cincinnati Ins Co	\$45,770,345	1.1%	\$9,767,259,501	\$5,853,661,523	\$3,913,597,978
35882	Geico Gen Ins Co	\$37,801,048	0.9%	\$184,207,547	\$69,836,672	\$114,370,875
25127	State Auto Prop & Cas Ins Co	\$35,736,256	0.9%	\$1,888,981,536	\$1,383,490,727	\$505,490,809
18988	Auto Owners Ins Co	\$32,981,067	0.8%	\$10,308,075,652	\$3,717,107,597	\$6,590,968,055
40371	Columbia Mut Ins Co	\$32,976,628	0.8%	\$365,029,048	\$228,750,145	\$136,278,903
25674	Travelers Prop Cas Co Of Amer	\$32,855,086	0.8%	\$841,745,403	\$391,666,450	\$450,078,953
23035	Liberty Mut Fire Ins Co	\$30,146,607	0.7%	\$5,235,743,369	\$4,296,603,316	\$939,140,053
16535	Zurich Amer Ins Co	\$29,937,687	0.7%	\$30,011,078,824	\$22,368,818,502	\$7,642,260,323
23779	Nationwide Mut Fire Ins Co	\$28,142,606	0.7%	\$4,729,713,281	\$2,412,362,929	\$2,317,350,352
25968	USAA Cas Ins Co	\$26,620,412	0.6%	\$7,773,384,295	\$4,100,051,587	\$3,673,332,707
22055	Geico Ind Co	\$26,591,933	0.6%	\$6,443,734,584	\$3,694,854,201	\$2,748,880,383
21482	Factory Mut Ins Co	\$25,986,205	0.6%	\$12,239,933,900	\$4,714,811,834	\$7,525,122,066
39012	Safeco Ins Co Of IL	\$25,963,000	0.6%	\$644,307,837	\$480,723,907	\$163,583,930
16322	Progressive Direct Ins Co	\$25,136,665	0.6%	\$4,541,611,515	\$3,178,328,322	\$1,363,283,193
23043	Liberty Mut Ins Co	\$25,078,179	0.6%	\$40,205,366,577	\$25,694,899,915	\$14,510,466,662
11185	Foremost Ins Co Grand Rapids MI	\$24,185,861	0.6%	\$1,774,411,860	\$780,873,669	\$993,538,191
22667	Ace Amer Ins Co	\$23,726,506	0.6%	\$11,040,642,831	\$8,614,827,579	\$2,425,815,252
20281	Federal Ins Co	\$23,083,636	0.6%	\$31,246,667,594	\$17,405,651,560	\$13,841,016,034
15512	Automobile Club Interins Exch	\$22,655,626	0.5%	\$414,551,593	\$226,521,741	\$188,029,852
12188	Alfa Vision Ins Corp	\$21,083,593	0.5%	\$84,953,371	\$42,095,756	\$42,857,616
11770	United Financial Cas Co	\$20,971,793	0.5%	\$1,815,880,253	\$1,424,534,184	\$391,346,069
13412	Austin Mut Ins Co	\$20,754,739	0.5%	\$112,460,866	\$88,249,408	\$24,211,458
25135	State Automobile Mut Ins Co	\$20,399,121	0.5%	\$2,093,759,910	\$1,345,059,337	\$748,700,573
16691	Great Amer Ins Co	\$20,105,730	0.5%	\$5,132,593,204	\$3,662,948,328	\$1,469,644,876
21873	Firemans Fund Ins Co	\$19,743,006	0.5%	\$11,835,782,853	\$9,313,649,661	\$2,522,133,192
19240	Allstate Ind Co	\$19,317,617	0.5%	\$148,231,297	\$4,604,679	\$143,626,618
41840	Allmerica Fin Benefit Ins Co	\$18,888,022	0.5%	\$30,945,392	\$11,687	\$30,933,705
33049	State Volunteer Mut Ins Co	\$18,813,783	0.5%	\$1,169,479,816	\$705,433,547	\$464,046,269
25658	Travelers Ind Co	\$18,240,263	0.4%	\$21,295,148,223	\$14,175,862,147	\$7,119,286,075
24740	Safeco Ins Co Of Amer	\$17,716,417	0.4%	\$4,029,806,477	\$3,084,756,281	\$945,050,196
21415	Employers Mut Cas Co	\$16,902,297	0.4%	\$2,308,941,711	\$1,345,917,847	\$963,023,864
18058	Philadelphia Ind Ins Co	\$16,421,684	0.4%	\$6,047,269,601	\$4,030,090,982	\$2,017,178,619
10642	Cherokee Ins Co	\$16,280,240	0.4%	\$330,334,592	\$192,232,142	\$138,102,450
20699	Ace Prop & Cas Ins Co	\$16,192,451	0.4%	\$7,925,855,351	\$6,123,349,172	\$1,802,506,179
36781	John Deere Ins Co	\$16,058,503	0.4%	\$324,820,050	\$212,714,874	\$112,105,176
31194	Travelers Cas & Surety Co Of Amer	\$15,945,577	0.4%	\$4,339,558,778	\$2,559,106,957	\$1,780,451,821
21652	Farmers Ins Exch	\$15,623,929	0.4%	\$15,530,166,955	\$11,779,367,292	\$3,750,799,663
33987	ADM Ins Co	\$15,588,185	0.4%	\$337,654,119	\$315,889,806	\$21,764,313
37877	Nationwide Prop & Cas Ins Co	\$15,402,937	0.4%	\$554,975,394	\$500,444,179	\$54,531,215
22063	Government Employees Ins Co	\$15,139,808	0.4%	\$19,089,625,624	\$11,072,034,707	\$8,017,590,917

## Property and Casualty (Cont.)

NAIC	Company Name	AR Premium	Market Share	Assets	Liabilities	Capital & Surplus
12548	American Agri Business Ins Co	\$15,088,398	0.4%	\$738,114,605	\$713,404,726	\$24,709,879
22292	Hanover Ins Co	\$15,073,893	0.4%	\$5,696,503,340	\$4,177,637,398	\$1,518,865,942
23469	American Modern Home Ins Co	\$14,858,121	0.4%	\$1,156,589,865	\$766,798,928	\$389,790,936
21407	Emcasco Ins Co	\$14,702,401	0.4%	\$377,739,558	\$278,932,801	\$98,806,757
20095	Bituminous Cas Corp	\$14,043,675	0.3%	\$719,804,772	\$445,592,515	\$274,212,257
25704	Pride National Ins Co	\$13,893,613	0.3%	\$17,073,831	\$17,055,624	\$18,207
40649	Economy Premier Assur Co	\$13,883,197	0.3%	\$87,686,356	\$45,284,795	\$42,401,560
18600	USAA Gen Ind Co	\$13,739,438	0.3%	\$1,676,156,295	\$1,095,326,320	\$580,829,975
13935	Federated Mut Ins Co	\$13,582,873	0.3%	\$4,233,760,432	\$1,868,319,414	\$2,365,441,018
42978	American Security Ins Co	\$13,502,444	0.3%	\$1,949,336,062	\$1,246,253,818	\$703,082,244
28401	American Natl Prop & Cas Co	\$13,012,111	0.3%	\$1,105,772,495	\$610,279,829	\$495,492,666
27626	Firstcomp Ins Co	\$12,926,807	0.3%	\$283,222,392	\$192,812,181	\$90,410,211
13021	United Fire & Cas Co	\$12,487,630	0.3%	\$1,434,075,938	\$848,089,970	\$585,985,968
13528	Brotherhood Mut Ins Co	\$12,443,243	0.3%	\$384,885,706	\$225,170,962	\$159,714,744
23736	Direct Natl Ins Co	\$12,288,902	0.3%	\$18,079,475	\$10,996,000	\$7,083,475
34690	Property & Cas Ins Co Of Hartford	\$12,217,394	0.3%	\$221,453,648	\$117,201,037	\$104,252,611
15725	Cameron Mut Ins Co	\$11,962,808	0.3%	\$74,928,089	\$43,326,978	\$31,601,111
27120	Trumbull Ins Co	\$11,624,764	0.3%	\$210,543,586	\$119,229,101	\$91,314,485
26298	Metropolitan Prop & Cas Ins Co	\$11,526,572	0.3%	\$5,146,441,717	\$3,159,162,731	\$1,987,278,986
37478	Hartford Ins Co Of The Midwest	\$11,098,488	0.3%	\$470,143,468	\$117,403,236	\$352,740,232
10111	American Bankers Ins Co Of FL	\$11,077,651	0.3%	\$1,707,524,560	\$1,201,055,685	\$506,468,875
25844	Union Ins Co	\$11,034,916	0.3%	\$92,820,469	\$65,825,522	\$26,994,947
10335	Bridgefield Cas Ins Co	\$10,984,049	0.3%	\$75,412,201	\$29,059,446	\$46,352,755
24538	Republic Underwriters Ins Co	\$10,964,890	0.3%	\$658,144,357	\$429,695,517	\$228,448,840
11371	Great West Cas Co	\$10,677,396	0.3%	\$1,635,630,278	\$1,120,728,418	\$514,901,861
19410	Commerce & Industry Ins Co	\$10,217,825	0.2%	\$7,350,738,899	\$5,309,274,946	\$2,041,463,953
33600	LM Ins Corp	\$9,647,005	0.2%	\$175,447,982	\$65,372,993	\$110,074,989
11150	Arch Ins Co	\$9,448,817	0.2%	\$2,696,900,436	\$2,133,417,221	\$563,483,215
10251	American Underwriters Ins Co	\$9,435,659	0.2%	\$7,315,709	\$1,845,424	\$5,470,285
13897	Farmers Mut Hail Ins Co Of IA	\$9,376,524	0.2%	\$879,945,933	\$562,398,698	\$317,547,236
37273	Axis Ins Co	\$9,327,748	0.2%	\$1,196,493,423	\$657,616,131	\$538,877,292
25615	Charter Oak Fire Ins Co	\$9,311,596	0.2%	\$918,495,654	\$686,324,572	\$232,171,082
12810	MDOW Ins Co	\$9,032,375	0.2%	\$9,033,263	\$3,908,068	\$5,125,195
18767	Church Mut Ins Co	\$8,918,141	0.2%	\$1,229,671,441	\$814,391,978	\$415,279,462
27235	Auto Club Family Ins Co	\$8,802,098	0.2%	\$109,150,140	\$73,711,015	\$35,439,125
40142	American Zurich Ins Co	\$8,789,538	0.2%	\$212,740,660	\$61,760,969	\$150,979,691
21253	Garrison Prop & Cas Ins Co	\$8,783,253	0.2%	\$1,107,945,192	\$690,114,924	\$417,830,268
17647	United Home Ins Co	\$8,761,580	0.2%	\$13,164,200	\$7,770,299	\$5,393,901
23450	American Family Home Ins Co	\$8,656,674	0.2%	\$506,148,956	\$352,406,184	\$153,742,772
28452	Republic Mortgage Ins Co	\$8,521,981	0.2%	\$1,755,650,549	\$1,642,107,828	\$113,542,721
39217	QBE Ins Corp	\$8,491,995	0.2%	\$2,188,101,716	\$1,385,703,329	\$802,398,387
32700	Owners Ins Co	\$8,467,276	0.2%	\$3,191,708,360	\$2,052,405,548	\$1,139,302,813
31325	Acadia Ins Co	\$8,121,406	0.2%	\$123,511,318	\$73,976,693	\$49,534,624
36064	Hanover Amer Ins Co	\$8,118,273	0.2%	\$28,169,213	\$333,270	\$27,835,943
19380	American Home Assur Co	\$8,077,960	0.2%	\$24,302,299,692	\$18,297,957,433	\$6,004,342,259
31895	American Interstate Ins Co	\$8,006,428	0.2%	\$1,001,760,532	\$677,828,469	\$323,932,063
12416	Protective Ins Co	\$7,991,181	0.2%	\$680,093,297	\$342,606,697	\$337,486,600
19070	Standard Fire Ins Co	\$7,969,240	0.2%	\$3,440,165,126	\$2,382,408,789	\$1,057,756,337
11839	Circle Star Ins Co RRG	\$7,877,152	0.2%	\$2,354,805	\$1,031,595	\$1,323,210
11000	Sentinel Ins Co Ltd	\$7,863,036	0.2%	\$201,618,882	\$70,374,461	\$131,244,420
34312	Producers Agriculture Ins Co	\$7,689,620	0.2%	\$271,052,698	\$211,970,495	\$59,082,203
21709	Truck Ins Exch	\$7,610,191	0.2%	\$1,963,013,951	\$1,428,051,305	\$534,962,646
19216	Southern Ins Co	\$7,478,147	0.2%	\$51,367,635	\$21,117,156	\$30,250,479
10804	Continental Western Ins Co	\$7,249,422	0.2%	\$229,682,969	\$146,769,327	\$82,913,642

## *Property and Casualty (Cont.)*

NAIC	Company Name	AR Premium	Market Share	Assets	Liabilities	Capital & Surplus
33383	First Professionals Ins Co	\$7,215,102	0.2%	\$621,820,521	\$421,599,455	\$200,221,066
36684	Riverport Ins Co	\$6,896,341	0.2%	\$124,172,605	\$86,288,158	\$37,884,446
26247	American Guar & Liab Ins	\$6,796,209	0.2%	\$299,468,827	\$118,167,797	\$181,301,030
15032	Guideone Mut Ins Co	\$6,680,583	0.2%	\$1,134,816,016	\$711,426,606	\$423,389,410
25623	Phoenix Ins Co	\$6,679,655	0.2%	\$3,860,080,572	\$2,469,433,674	\$1,390,646,898
25240	NAU Country Ins Co	\$6,677,188	0.2%	\$1,458,601,022	\$1,123,152,185	\$335,448,837
19046	Travelers Cas Ins Co Of Amer	\$6,643,939	0.2%	\$1,841,383,098	\$1,334,830,847	\$506,552,250
15873	United Guar Residential Ins Co	\$6,642,043	0.2%	\$2,930,260,959	\$1,547,286,149	\$1,382,974,810
23361	Shelter Gen Ins Co	\$6,539,736	0.2%	\$171,028,188	\$88,876,684	\$82,151,504
20478	National Fire Ins Co Of Hartford	\$6,469,485	0.2%	\$112,942,403	\$1,110,434	\$111,831,969
24015	Northland Ins Co	\$6,403,489	0.2%	\$1,150,634,059	\$626,012,721	\$524,621,339
24147	Old Republic Ins Co	\$6,252,808	0.2%	\$2,439,819,609	\$1,564,899,190	\$874,920,419
10014	Affiliated Fm Ins Co	\$6,250,319	0.2%	\$2,302,162,676	\$1,268,064,469	\$1,034,098,207
10783	Cornerstone Natl Ins Co	\$6,175,168	0.1%	\$46,070,941	\$36,522,846	\$9,548,095
42404	Liberty Ins Corp	\$6,010,229	0.1%	\$1,449,663,496	\$1,281,011,536	\$168,651,960
29459	Twin City Fire Ins Co	\$6,007,679	0.1%	\$643,054,820	\$351,940,273	\$291,114,546
10510	Carolina Cas Ins Co	\$5,935,643	0.1%	\$317,738,389	\$75,041,878	\$242,696,511
18236	Agents Mut Ins Co	\$5,923,880	0.1%	\$2,167,406	\$1,171,147	\$996,259
19682	Hartford Fire In Co	\$5,799,042	0.1%	\$24,620,337,797	\$11,607,800,224	\$13,012,537,573
11991	National Cas Co	\$5,787,116	0.1%	\$277,226,440	\$154,612,070	\$122,614,370
34789	21st Century Centennial Ins Co	\$5,618,298	0.1%	\$540,388,682	\$31,787,880	\$508,600,802
25666	Travelers Ind Co Of Amer	\$5,510,166	0.1%	\$638,950,805	\$458,215,582	\$180,735,223
10855	Cypress Ins Co	\$5,427,833	0.1%	\$1,065,166,762	\$857,985,530	\$207,181,232
28746	Equity Ins Co	\$5,414,077	0.1%	\$75,327,675	\$45,845,833	\$29,481,842
28223	Nationwide Agribusiness Ins Co	\$5,394,796	0.1%	\$320,901,757	\$259,460,008	\$61,441,749
41181	Universal Underwriters Ins Co	\$5,324,714	0.1%	\$385,427,601	\$43,733,137	\$341,694,464
29858	Mortgage Guar Ins Corp	\$5,308,103	0.1%	\$4,355,038,466	\$3,665,933,600	\$689,104,866
37257	Praetorian Ins Co	\$5,250,446	0.1%	\$1,109,428,693	\$793,140,655	\$316,288,038
21687	Mid Century Ins Co	\$5,178,673	0.1%	\$3,657,513,567	\$2,803,151,334	\$854,362,233
23841	New Hampshire Ins Co	\$5,111,542	0.1%	\$3,254,819,767	\$2,332,095,199	\$922,724,568
29424	Hartford Cas Ins Co	\$5,080,097	0.1%	\$2,196,489,846	\$1,289,173,435	\$907,316,412
11843	Medical Protective Co	\$5,062,521	0.1%	\$3,013,477,213	\$1,938,084,420	\$1,075,392,793
44369	Imperial Fire & Cas Ins Co	\$5,046,115	0.1%	\$95,579,983	\$69,854,094	\$25,725,889
35319	United Automobile Ins Co	\$5,007,949	0.1%	\$329,613,695	\$266,035,662	\$63,578,034
33391	ProAssurance Ind Co Inc	\$4,942,204	0.1%	\$1,861,949,917	\$1,089,485,213	\$772,464,704
10204	Consumers Ins USA Inc	\$4,916,310	0.1%	\$57,426,637	\$38,372,811	\$19,053,826
25682	Travelers Ind Co Of CT	\$4,896,741	0.1%	\$1,065,153,399	\$715,028,110	\$350,125,289
15105	Safety Natl Cas Corp	\$4,755,080	0.1%	\$3,544,051,071	\$2,583,233,765	\$960,817,306
39845	Westport Ins Corp	\$4,746,295	0.1%	\$5,331,348,237	\$3,604,842,030	\$1,726,506,207
24767	St Paul Fire & Marine Ins Co	\$4,701,175	0.1%	\$18,761,764,152	\$12,761,100,471	\$6,000,663,680
38318	Starr Ind & Liab Co	\$4,670,099	0.1%	\$2,904,072,458	\$1,032,806,839	\$1,871,265,619
22306	Massachusetts Bay Ins Co	\$4,649,053	0.1%	\$59,594,032	\$2,269	\$59,591,763
37885	XL Specialty Ins Co	\$4,640,498	0.1%	\$440,703,057	\$272,035,448	\$168,667,609
11118	Federated Rural Electric Ins Exch	\$4,608,956	0.1%	\$432,219,498	\$295,597,194	\$136,622,304
35289	Continental Ins Co	\$4,489,671	0.1%	\$2,708,481,005	\$1,385,519,881	\$1,322,961,124
13137	Viking Ins Co Of WI	\$4,429,081	0.1%	\$379,193,825	\$199,511,336	\$179,682,489
39306	Fidelity & Deposit Co Of MD	\$4,336,920	0.1%	\$233,694,113	\$50,114,546	\$183,579,567
32620	National Interstate Ins Co	\$4,325,802	0.1%	\$1,017,470,693	\$747,774,754	\$269,695,939
34339	Metropolitan Grp Prop & Cas Ins Co	\$4,292,096	0.1%	\$555,783,399	\$250,274,443	\$305,508,956
16047	Southern Pioneer Prop & Cas Ins Co	\$4,282,520	0.1%	\$22,698,594	\$9,203,870	\$13,494,724
18023	Star Ins Co	\$4,264,669	0.1%	\$956,786,241	\$693,690,735	\$263,095,506
20508	Valley Forge Ins Co	\$4,211,235	0.1%	\$74,592,466	\$28,461	\$74,564,005
25011	Wesco Ins Co	\$4,174,794	0.1%	\$505,245,034	\$390,741,078	\$114,503,956
21423	Union Ins Co Of Providence	\$4,135,649	0.1%	\$101,816,337	\$51,958,858	\$49,857,479



## *Property and Casualty (Cont.)*

NAIC	Company Name	AR Premium	Market Share	Assets	Liabilities	Capital & Surplus
18333	Peerless Ind Ins Co	\$4,103,083	0.1%	\$723,033,434	\$549,050,679	\$173,982,755
19615	American Reliable Ins Co	\$4,045,780	0.1%	\$281,807,630	\$188,139,500	\$93,668,130
12157	Companion Prop & Cas Ins Co	\$4,015,661	0.1%	\$863,319,670	\$621,400,735	\$241,918,935
33790	Radian Guar Inc	\$4,012,178	0.1%	\$3,872,046,445	\$2,945,906,068	\$926,140,377
19720	American Alt Ins Corp	\$3,974,356	0.1%	\$464,716,934	\$308,484,553	\$156,232,382
38458	Genworth Mortgage Ins Corp	\$3,969,294	0.1%	\$2,247,302,535	\$1,761,709,678	\$485,592,857
26042	Wausau Underwriters Ins Co	\$3,957,498	0.1%	\$286,810,522	\$192,542,721	\$94,267,801
21180	Sentry Select Ins Co	\$3,947,152	0.1%	\$620,790,668	\$399,336,850	\$221,453,818
35300	Allianz Global Risks US Ins Co	\$3,918,762	0.1%	\$3,099,834,952	\$2,232,934,043	\$866,900,909
20397	Vigilant Ins Co	\$3,893,571	0.1%	\$451,265,663	\$204,499,436	\$246,766,227
19356	Maryland Cas Co	\$3,891,304	0.1%	\$192,631,805	\$31,042,974	\$161,588,831
29599	US Specialty Ins Co	\$3,885,070	0.1%	\$2,055,971,992	\$1,503,459,395	\$552,512,597
13838	Farmland Mut Ins Co	\$3,865,770	0.1%	\$439,283,862	\$278,874,004	\$160,409,858
23280	The Cincinnati Ind Co	\$3,865,061	0.1%	\$101,397,660	\$25,232,809	\$76,164,851
21113	United States Fire Ins Co	\$3,859,883	0.1%	\$2,924,116,005	\$2,042,399,670	\$881,716,335
30104	Hartford Underwriters Ins Co	\$3,856,745	0.1%	\$1,558,032,772	\$943,768,335	\$614,264,437
24791	St Paul Mercury Ins Co	\$3,849,114	0.1%	\$353,863,098	\$224,841,268	\$129,021,830
36625	Old Reliable Cas Co	\$3,843,040	0.1%	\$9,943,212	\$1,226,554	\$8,716,658
20427	American Cas Co Of Reading PA	\$3,758,159	0.1%	\$136,634,929	\$28,311	\$136,606,618
20087	National Ind Co	\$3,744,838	0.1%	\$127,340,865,936	\$48,479,351,256	\$78,861,514,680
10464	Canal Ins Co	\$3,683,743	0.1%	\$831,012,993	\$409,757,749	\$421,255,244
26344	Great Amer Assur Co	\$3,668,145	0.1%	\$21,328,084	\$2,719,899	\$18,608,186
13714	Pharmacists Mut Ins Co	\$3,658,878	0.1%	\$228,715,948	\$150,500,743	\$78,215,205
11398	Guarantee Ins Co	\$3,600,307	0.1%	\$323,044,908	\$279,113,999	\$43,930,909
42757	Agri Gen Ins Co	\$3,553,455	0.1%	\$557,227,143	\$86,266,399	\$470,960,744
22314	RSUI Ind Co	\$3,553,331	0.1%	\$3,013,445,017	\$1,717,435,600	\$1,296,009,417
13056	RLI Ins Co	\$3,548,604	0.1%	\$1,423,901,416	\$739,829,235	\$684,072,181
13188	Western Surety Co	\$3,439,484	0.1%	\$1,732,544,110	\$680,145,567	\$1,052,398,543
15130	Encompass Ind Co	\$3,425,015	0.1%	\$25,852,379	\$1,341,805	\$24,510,574
14982	Penn Millers Ins Co	\$3,340,942	0.1%	\$159,708,871	\$89,517,531	\$70,191,340
24171	Netherlands Ins Co The	\$3,205,452	0.1%	\$443,604,113	\$330,519,913	\$113,084,200
18295	Lafayette Ins Co	\$3,184,394	0.1%	\$154,670,270	\$87,882,347	\$66,787,924
28535	Triangle Ins Co Inc	\$3,179,545	0.1%	\$50,416,186	\$30,670,286	\$19,745,900
10723	Nationwide Assur Co	\$3,160,991	0.1%	\$134,610,019	\$77,017,150	\$57,592,869
10166	Accident Fund Ins Co of Amer	\$3,119,032	0.1%	\$2,300,315,521	\$1,666,711,440	\$633,604,081
37869	Pre Paid Legal Cas Inc	\$3,085,851	0.1%	\$21,955,669	\$4,123,321	\$17,832,348
38970	Markel Ins Co	\$3,043,372	0.1%	\$1,019,515,844	\$746,745,033	\$272,770,811
23396	Amerisure Mut Ins Co	\$3,037,153	0.1%	\$1,843,390,815	\$1,110,517,542	\$732,873,273
19062	Automobile Ins Co Of Hartford CT	\$3,027,166	0.1%	\$983,096,013	\$687,983,164	\$295,112,849
11255	Caterpillar Ins Co	\$3,012,737	0.1%	\$575,646,880	\$371,725,946	\$203,920,934
20494	Transportation Ins Co	\$2,985,241	0.1%	\$86,318,532	\$51,348	\$86,267,184
24554	XL Ins Amer Inc	\$2,909,139	0.1%	\$775,649,359	\$522,650,606	\$252,998,753
11223	Safeway Ins Co Of AL	\$2,908,638	0.1%	\$54,860,261	\$24,436,442	\$30,423,819
40045	Starnet Ins Co	\$2,871,600	0.1%	\$190,401,076	\$83,023,551	\$107,377,525
23965	Norfolk & Dedham Mut Fire Ins Co	\$2,868,364	0.1%	\$305,516,093	\$144,541,117	\$160,974,976
20052	National Liab & Fire Ins Co	\$2,815,101	0.1%	\$1,419,008,623	\$704,540,732	\$714,467,891
10784	Maxum Cas Ins Co	\$2,781,927	0.1%	\$54,308,891	\$39,355,694	\$14,953,196
38652	American Modern Select Ins Co	\$2,779,890	0.1%	\$236,597,358	\$200,350,308	\$36,247,050
24813	Balboa Ins Co	\$2,772,147	0.1%	\$580,822,086	\$139,257,024	\$441,565,062
19640	Columbia Natl Ins Co	\$2,763,692	0.1%	\$91,895,226	\$59,781,144	\$32,114,082
12114	National Security Fire & Cas Co	\$2,711,023	0.1%	\$60,657,433	\$36,568,634	\$24,088,799
19038	Travelers Cas & Surety Co	\$2,696,661	0.1%	\$15,137,117,645	\$9,987,600,111	\$5,149,517,534
19658	Bristol W Ins Co	\$2,629,667	0.1%	\$139,844,368	\$94,877,571	\$44,966,797
14974	Pennsylvania Lumbermens Mut Ins	\$2,612,292	0.1%	\$364,751,061	\$258,155,561	\$106,595,500

## *Property and Casualty (Cont.)*

NAIC	Company Name	AR Premium	Market Share	Assets	Liabilities	Capital & Surplus
24414	General Cas Co Of WI	\$2,601,866	0.1%	\$1,024,950,372	\$576,844,447	\$448,105,925
10120	Everest Natl Ins Co	\$2,593,247	0.1%	\$836,112,931	\$716,161,837	\$119,951,094
19917	Liberty Ins Underwriters Inc	\$2,575,068	0.1%	\$217,790,106	\$100,821,420	\$116,968,686
27154	Atlantic Specialty Ins Co	\$2,536,429	0.1%	\$2,248,366,088	\$1,531,628,172	\$716,737,916
38245	BCS Ins Co	\$2,511,185	0.1%	\$254,500,945	\$102,622,199	\$151,878,746
19402	Chartis Prop Cas Co	\$2,509,781	0.1%	\$3,475,695,782	\$2,395,527,332	\$1,080,168,450
13565	Arkansas Mut Ins Co	\$2,500,399	0.1%	\$4,796,219	\$2,284,465	\$2,511,754
32220	21st Century N Amer Ins Co	\$2,485,565	0.1%	\$569,023,204	\$51,680,019	\$517,343,185
29980	First Colonial Ins Co	\$2,481,646	0.1%	\$350,843,740	\$167,248,671	\$183,595,068
29068	IDS Prop Cas Ins Co	\$2,456,251	0.1%	\$1,109,418,363	\$647,192,442	\$462,225,921
28665	Cincinnati Cas Co	\$2,447,074	0.1%	\$329,294,196	\$36,647,530	\$292,646,666
24260	Progressive Cas Ins Co	\$2,396,666	0.1%	\$5,332,134,450	\$3,883,660,271	\$1,448,474,179
23612	Midwest Employers Cas Co	\$2,356,460	0.1%	\$352,883,431	\$215,757,803	\$137,125,629
39039	Rural Comm Ins Co	\$2,347,720	0.1%	\$5,421,077,494	\$4,840,761,029	\$580,316,465
21458	Employers Ins of Wausau	\$2,334,212	0.1%	\$3,940,708,266	\$2,710,973,904	\$1,229,734,362
16705	Dealers Assur Co	\$2,278,229	0.1%	\$74,079,957	\$28,127,299	\$45,952,658
10895	Midwest Ins Co	\$2,204,462	0.1%	\$77,088,497	\$54,615,993	\$22,472,504
22012	Motors Ins Corp	\$2,193,409	0.1%	\$2,770,084,161	\$1,586,928,749	\$1,183,155,412
10030	Westchester Fire Ins Co	\$2,192,665	0.1%	\$2,119,270,815	\$1,305,567,622	\$813,703,193
19305	Assurance Co Of Amer	\$2,189,047	0.1%	\$36,530,774	\$17,077,553	\$19,453,222
27251	PMI Mortgage Ins Co	\$2,185,208	0.1%	\$2,327,847,234	\$4,473,912,963	\$(2,146,065,729)
24988	Sentry Ins A Mut Co	\$2,181,773	0.1%	\$6,248,130,004	\$2,610,975,480	\$3,637,154,525
23809	Granite State Ins Co	\$2,127,760	0.1%	\$42,447,858	\$3,176,623	\$39,271,235
26921	Everest Reins Co	\$2,062,604	0.1%	\$9,046,691,136	\$6,433,696,095	\$2,612,995,041
11800	Foremost Prop & Cas Ins Co	\$2,050,080	0.0%	\$54,041,659	\$36,956,880	\$17,084,779
36137	Travelers Commercial Ins Co	\$2,048,679	0.0%	\$333,341,483	\$245,940,479	\$87,401,004
23728	National Gen Ins Co	\$2,048,406	0.0%	\$65,931,386	\$31,161,075	\$34,770,311
20613	Sparta Ins Co	\$2,046,165	0.0%	\$535,398,235	\$281,130,247	\$254,267,988
12696	America First Ins Co	\$2,005,581	0.0%	\$13,851,450	\$613,389	\$13,238,061
42803	Guideone Elite Ins Co	\$2,002,400	0.0%	\$26,513,856	\$6,113,665	\$20,400,191
18287	Assured Guar Municipal Corp	\$1,992,657	0.0%	\$4,498,509,986	\$2,718,458,492	\$1,780,051,494
32387	Star Cas Ins Co	\$1,923,157	0.0%	\$16,329,280	\$8,945,207	\$7,384,073
20109	Bituminous Fire & Marine Ins Co	\$1,918,788	0.0%	\$450,626,680	\$299,995,864	\$150,630,816
42376	Technology Ins Co Inc	\$1,911,726	0.0%	\$915,522,331	\$708,752,279	\$206,770,052
11042	Stonetrust Commercial Ins Co	\$1,907,696	0.0%	\$86,246,186	\$59,845,070	\$26,401,116
22837	AGCS Marine Ins Co	\$1,883,495	0.0%	\$782,172,018	\$642,968,625	\$139,203,394
19879	Security Natl Ins Co	\$1,878,204	0.0%	\$232,736,748	\$181,542,370	\$51,194,378
19887	Trinity Universal Ins Co	\$1,869,080	0.0%	\$2,407,881,342	\$1,568,855,754	\$839,025,588
22136	Great Amer Ins Co of NY	\$1,866,304	0.0%	\$46,837,412	\$1,606,247	\$45,231,164
26182	Harleysville Worcester Ins Co	\$1,851,236	0.0%	\$954,712,409	\$763,102,501	\$191,609,908
20303	Great Northern Ins Co	\$1,829,714	0.0%	\$1,625,555,808	\$1,186,963,537	\$438,592,271
21881	National Surety Corp	\$1,820,193	0.0%	\$166,518,497	\$26,275,636	\$140,242,862
43575	Indemnity Ins Co Of North Amer	\$1,805,356	0.0%	\$376,972,967	\$280,845,828	\$96,127,139
24198	Peerless Ins Co	\$1,783,753	0.0%	\$7,629,799,775	\$5,742,491,090	\$1,887,308,685
12304	Accident Fund Gen Ins Co	\$1,765,966	0.0%	\$181,997,737	\$144,062,426	\$37,935,311
22357	Hartford Accident & Ind Co	\$1,723,988	0.0%	\$11,063,287,312	\$7,955,733,014	\$3,107,554,297
23248	Occidental Fire & Cas Co Of NC	\$1,721,684	0.0%	\$364,672,029	\$244,270,383	\$120,401,646
43494	American Hallmark Ins Co Of TX	\$1,720,226	0.0%	\$261,919,725	\$160,780,974	\$101,138,751
26310	Granite Re Inc	\$1,703,880	0.0%	\$30,376,247	\$15,037,367	\$15,338,880
42749	Traders Ins Co	\$1,703,409	0.0%	\$26,169,870	\$18,652,094	\$7,517,776
10023	Alliance Of Nonprofits For Ins RRG	\$1,701,099	0.0%	\$57,087,097	\$29,202,178	\$27,884,919
13927	Homesite Ins Co Of The Midwest	\$1,698,810	0.0%	\$283,317,252	\$213,386,579	\$69,930,673
10847	Cumis Ins Society Inc	\$1,693,392	0.0%	\$1,636,907,074	\$1,074,859,098	\$562,047,976
21105	North River Ins Co	\$1,672,166	0.0%	\$869,652,681	\$592,615,264	\$277,037,417

## *Property and Casualty (Cont.)*

NAIC	Company Name	AR Premium	Market Share	Assets	Liabilities	Capital & Surplus
28932	Markel Amer Ins Co	\$1,666,834	0.0%	\$422,023,051	\$310,844,339	\$111,178,712
33588	First Liberty Ins Corp	\$1,647,516	0.0%	\$52,743,594	\$31,837,209	\$20,906,385
34037	Hallmark Ins Co	\$1,623,395	0.0%	\$192,593,117	\$122,736,975	\$69,856,142
28304	Federated Serv Ins Co	\$1,584,748	0.0%	\$377,338,008	\$206,211,680	\$171,126,327
19518	Catlin Ins Co	\$1,581,633	0.0%	\$177,787,247	\$113,731,059	\$64,056,188
20516	Euler Hermes N Amer Ins Co	\$1,576,110	0.0%	\$388,400,822	\$234,589,177	\$153,811,645
16608	New York Marine & Gen Ins Co	\$1,525,731	0.0%	\$738,870,115	\$508,281,714	\$230,588,401
42307	Navigators Ins Co	\$1,520,358	0.0%	\$2,102,436,631	\$1,419,555,675	\$682,880,956
13634	Essent Guar Inc	\$1,512,901	0.0%	\$246,202,760	\$82,413,177	\$163,789,583
24112	Westfield Ins Co	\$1,511,822	0.0%	\$2,243,144,674	\$1,389,541,857	\$853,602,817
23663	National Amer Ins Co	\$1,511,093	0.0%	\$155,048,000	\$98,580,346	\$56,467,654
24082	Ohio Security Ins Co	\$1,492,854	0.0%	\$41,440,087	\$26,671,246	\$14,768,841
24074	Ohio Cas Ins Co	\$1,484,082	0.0%	\$5,100,508,528	\$3,825,876,240	\$1,274,632,288
11630	Jefferson Ins Co	\$1,478,360	0.0%	\$48,760,850	\$15,076,153	\$33,684,697
31348	Crum & Forster Ind Co	\$1,459,711	0.0%	\$40,699,249	\$26,207,023	\$14,492,226
21857	American Ins Co	\$1,458,093	0.0%	\$370,082,939	\$57,826,030	\$312,256,909
17965	American Sentinel Ins Co	\$1,427,132	0.0%	\$27,845,829	\$13,784,093	\$14,061,736
42552	Nova Cas Co	\$1,403,675	0.0%	\$95,290,538	\$329,631	\$94,960,907
21326	Empire Fire & Marine Ins Co	\$1,393,836	0.0%	\$110,898,846	\$57,927,549	\$52,971,297
42994	Progressive Classic Ins Co	\$1,381,487	0.0%	\$309,875,640	\$223,018,178	\$86,857,462
42617	MAG Mut Ins Co	\$1,358,548	0.0%	\$1,543,671,903	\$876,178,657	\$667,493,246
23418	Mid Continent Cas Co	\$1,336,403	0.0%	\$477,619,353	\$323,243,488	\$154,375,865
43656	Louisiana Med Mut Ins Co	\$1,321,309	0.0%	\$412,520,225	\$234,800,194	\$177,720,031
11004	Alfa Specialty Ins Corp	\$1,319,321	0.0%	\$39,986,518	\$22,771,345	\$17,215,173
40827	Virginia Surety Co Inc	\$1,306,953	0.0%	\$978,940,010	\$686,889,661	\$292,050,349
24449	Regent Ins Co	\$1,304,183	0.0%	\$161,648,535	\$123,517,970	\$38,130,566
11126	Sompo Japan Ins Co of Amer	\$1,282,751	0.0%	\$911,015,860	\$416,848,311	\$494,167,550
35696	Harleysville Preferred Ins Co	\$1,282,713	0.0%	\$830,787,439	\$674,011,627	\$156,775,812
34274	Central States Ind Co Of Omaha	\$1,273,666	0.0%	\$335,051,415	\$49,516,244	\$285,535,171
10922	Insuremax Ins Co	\$1,272,857	0.0%	\$17,863,821	\$10,861,669	\$7,002,151
10952	Stonebridge Cas Ins Co	\$1,268,661	0.0%	\$304,317,000	\$198,664,455	\$105,652,545
41343	HDI Gerling Amer Ins Co	\$1,242,399	0.0%	\$320,042,817	\$188,424,593	\$131,618,226
19801	Argonaut Ins Co	\$1,237,472	0.0%	\$1,337,285,269	\$956,764,630	\$380,520,640
14354	Jewelers Mut Ins Co	\$1,222,064	0.0%	\$261,713,898	\$108,477,067	\$153,236,831
21164	Dairyland Ins Co	\$1,215,735	0.0%	\$1,128,979,953	\$668,189,096	\$460,790,856
20044	Berkshire Hathaway Homestate Ins Co	\$1,205,883	0.0%	\$1,082,981,359	\$345,942,019	\$737,039,340
36447	LM Gen Ins Co	\$1,200,231	0.0%	\$47,125,213	\$38,592,787	\$8,532,426
19976	Amica Mut Ins Co	\$1,192,720	0.0%	\$4,391,182,068	\$2,013,649,424	\$2,377,532,644
11523	Wright Natl Flood Ins Co	\$1,171,533	0.0%	\$30,980,971	\$12,867,639	\$18,113,332
44300	Tower Ins Co Of NY	\$1,170,512	0.0%	\$983,905,973	\$716,660,100	\$267,245,873
10349	Acceptance Cas Ins Co	\$1,170,165	0.0%	\$52,334,118	\$15,317,775	\$37,016,343
36234	Preferred Professional Ins Co	\$1,131,439	0.0%	\$402,712,991	\$225,497,012	\$177,215,979
19704	American States Ins Co	\$1,129,411	0.0%	\$1,659,490,650	\$1,410,873,074	\$248,617,576
14206	Holyoke Mut Ins Co In Salem	\$1,122,835	0.0%	\$216,586,202	\$134,858,183	\$81,728,019
41483	Farmington Cas Co	\$1,094,880	0.0%	\$1,002,985,303	\$733,742,651	\$269,242,652
23582	Harleysville Ins Co	\$1,072,340	0.0%	\$153,353,864	\$126,674,042	\$26,679,822
30945	Plaza Ins Co	\$1,063,286	0.0%	\$46,704,979	\$21,325,553	\$25,379,426
12904	Tokio Marine & Nichido Fire Ins Co	\$1,062,778	0.0%	\$1,387,396,694	\$888,331,392	\$499,065,302
40843	Universal Underwriters Of TX Ins	\$1,052,576	0.0%	\$11,879,684	\$2,217,224	\$9,662,460
23108	Lumbermens Underwriting Alliance	\$1,045,943	0.0%	\$285,634,011	\$231,105,850	\$54,528,161
40460	Sagamore Ins Co	\$1,044,827	0.0%	\$149,019,114	\$28,856,371	\$120,162,743
38911	Berkley Natl Ins Co	\$1,035,982	0.0%	\$63,310,124	\$14,776,402	\$48,533,722
19828	Argonaut Midwest Ins Co	\$1,031,520	0.0%	\$34,958,425	\$18,885,803	\$16,072,621
19488	Amerisure Ins Co	\$1,024,698	0.0%	\$690,525,912	\$478,255,880	\$212,270,032

## *Property and Casualty (Cont.)*

NAIC	Company Name	AR Premium	Market Share	Assets	Liabilities	Capital & Surplus
29580	Berkley Regional Ins Co	\$1,005,210	0.0%	\$2,700,795,389	\$1,983,482,209	\$717,313,180
12870	Sentruity Cas Co	\$1,002,834	0.0%	\$72,186,897	\$38,277,617	\$33,909,280
11573	Accident Ins Co Inc	\$1,002,182	0.0%	\$51,260,982	\$34,487,602	\$16,773,383
10639	Attorneys Liab Assur Society Inc RRG	\$1,002,020	0.0%	\$153,694,779	\$94,464,153	\$59,230,626
26492	Courtesy Ins Co	\$1,001,565	0.0%	\$627,178,337	\$362,141,617	\$265,036,720
44725	1st Auto & Cas Ins Co	\$995,231	0.0%	\$28,417,975	\$18,731,736	\$9,686,239
14559	Guideone Specialty Mut Ins Co	\$992,221	0.0%	\$250,194,649	\$158,871,059	\$91,323,590
10071	Encompass Ins Co Of Amer	\$977,175	0.0%	\$20,651,253	\$537,012	\$20,114,241
19860	Argonaut Great Central Ins Co	\$956,674	0.0%	\$52,973,654	\$29,745,872	\$23,227,782
36897	Manufacturers Alliance Ins Co	\$951,129	0.0%	\$169,746,074	\$102,659,942	\$67,086,132
12831	State Natl Ins Co Inc	\$929,937	0.0%	\$206,885,936	\$59,076,954	\$147,808,982
12262	Pennsylvania Manufacturers Assoc Ins	\$913,989	0.0%	\$730,552,713	\$505,114,713	\$225,438,000
12300	American Contractors Ins Co RRG	\$913,947	0.0%	\$18,842,272	\$11,589,017	\$7,253,255
22322	Greenwich Ins Co	\$910,281	0.0%	\$1,102,566,830	\$661,767,117	\$440,799,713
20117	California Cas Ind Exch	\$902,620	0.0%	\$557,587,652	\$237,604,502	\$319,983,150
26077	Lancer Ins Co	\$901,897	0.0%	\$444,033,485	\$294,176,948	\$149,856,537
10708	Lemic Ins Co	\$886,292	0.0%	\$64,161,783	\$53,540,187	\$10,621,596
24139	Old Republic Gen Ins Corp	\$884,795	0.0%	\$1,507,876,358	\$1,175,269,090	\$332,607,268
30180	Assured Guar Corp	\$878,554	0.0%	\$2,962,955,275	\$2,057,540,590	\$905,414,685
19429	Insurance Co Of The State Of PA	\$876,639	0.0%	\$3,393,263,870	\$2,441,306,136	\$951,957,734
41459	Armed Forces Ins Exch	\$871,924	0.0%	\$112,379,835	\$67,430,835	\$44,949,000
12223	Santa Fe Auto Ins Co	\$867,593	0.0%	\$22,893,436	\$25,209,640	\$(2,316,204)
12777	Chubb Ind Ins Co	\$866,706	0.0%	\$328,451,107	\$216,207,178	\$112,243,929
26069	Wausau Business Ins Co	\$865,036	0.0%	\$198,818,427	\$151,827,735	\$46,990,692
27928	Amex Assur Co	\$854,143	0.0%	\$269,206,023	\$72,462,985	\$196,743,038
27855	Zurich Amer Ins Co Of IL	\$852,363	0.0%	\$41,384,951	\$6,438,003	\$34,946,948
37915	Essentia Ins Co	\$849,140	0.0%	\$8,466,573	\$77,060	\$8,389,513
10701	Bridgefield Employers Ins Co	\$842,359	0.0%	\$141,034,442	\$29,086,640	\$111,947,802
21296	Alterra Amer Ins Co	\$840,564	0.0%	\$145,424,095	\$51,593,483	\$93,830,612
19372	Northern Ins Co Of NY	\$832,417	0.0%	\$36,104,529	\$7,254,529	\$28,850,000
10051	Lyndon Southern Ins Co	\$827,952	0.0%	\$49,613,081	\$29,212,494	\$20,400,588
22209	Freedom Specialty Ins Co	\$802,650	0.0%	\$25,296,472	\$13,718,123	\$11,578,349
37220	Direct Ins Co	\$795,874	0.0%	\$68,354,381	\$47,669,736	\$20,684,645
10936	Seneca Ins Co Inc	\$784,684	0.0%	\$443,927,418	\$286,597,796	\$157,329,622
19631	American Road Ins Co	\$768,063	0.0%	\$482,831,752	\$268,794,815	\$214,036,937
29874	North Amer Specialty Ins Co	\$743,569	0.0%	\$503,529,267	\$139,803,760	\$363,725,507
20346	Pacific Ind Co	\$738,958	0.0%	\$6,465,841,502	\$3,969,643,554	\$2,496,197,948
10690	Allied World Natl Assur Co	\$721,209	0.0%	\$280,404,695	\$163,485,902	\$116,918,794
39969	American Safety Cas Ins Co	\$715,062	0.0%	\$162,666,480	\$83,729,369	\$78,937,111
10718	Retailers Cas Ins Co	\$714,800	0.0%	\$64,778,843	\$38,473,425	\$26,305,418
39942	American Natl Gen Ins Co	\$708,613	0.0%	\$103,289,903	\$48,398,330	\$54,891,573
12472	LUBA Cas Ins Co	\$700,482	0.0%	\$204,347,286	\$138,827,420	\$65,519,866
26433	Harco Natl Ins Co	\$695,593	0.0%	\$309,557,015	\$166,916,141	\$142,640,874
10916	Suretec Ins Co	\$686,235	0.0%	\$150,313,814	\$78,014,698	\$72,299,115
25054	Hudson Ins Co	\$682,389	0.0%	\$821,135,558	\$422,234,329	\$398,901,229
19690	American Economy Ins Co	\$679,399	0.0%	\$1,219,734,253	\$1,033,436,358	\$186,297,895
23647	Ironshore Ind Inc	\$671,692	0.0%	\$232,984,013	\$135,451,811	\$97,532,202
25895	United States Liab Ins Co	\$650,986	0.0%	\$675,475,318	\$234,354,638	\$441,120,679
12907	Southwest Physicians RRG Inc	\$632,571	0.0%	\$62,320,914	\$49,567,629	\$12,753,286
30210	Esurance Prop & Cas Ins Co	\$630,719	0.0%	\$74,192,913	\$38,466,239	\$35,726,674
35769	Lyndon Prop Ins Co	\$611,987	0.0%	\$395,931,982	\$211,961,410	\$183,970,572
32603	Berkley Ins Co	\$595,225	0.0%	\$10,223,837,721	\$5,567,586,365	\$4,656,251,357
43460	Aspen Amer Ins Co	\$584,408	0.0%	\$277,922,904	\$105,887,625	\$172,035,279
11452	Hartford Steam Boil Inspec & Ins Co	\$581,566	0.0%	\$1,353,891,212	\$704,672,194	\$649,219,018



## *Property and Casualty (Cont.)*

NAIC	Company Name	AR Premium	Market Share	Assets	Liabilities	Capital & Surplus
21849	American Automobile Ins Co	\$573,687	0.0%	\$188,047,076	\$27,534,673	\$160,512,402
10103	American Agricultural Ins Co	\$569,240	0.0%	\$1,041,034,284	\$600,912,893	\$440,121,391
21261	Electric Ins Co	\$567,224	0.0%	\$1,442,439,660	\$960,764,911	\$481,674,749
22683	Teachers Ins Co	\$566,135	0.0%	\$315,505,820	\$184,026,122	\$131,479,698
33898	Aegis Security Ins Co	\$564,516	0.0%	\$89,125,777	\$44,607,725	\$44,518,052
41998	American Southern Home Ins Co	\$555,990	0.0%	\$126,941,492	\$91,827,303	\$35,114,189
28460	Sentry Cas Co	\$546,759	0.0%	\$212,375,723	\$137,472,744	\$74,902,979
10472	Capitol Ind Corp	\$537,869	0.0%	\$386,027,095	\$223,567,531	\$162,459,564
10676	First Guard Ins Co	\$535,164	0.0%	\$17,465,733	\$576,836	\$16,888,897
33650	Mendota Ins Co	\$519,238	0.0%	\$106,352,324	\$79,575,611	\$26,776,713
15954	AmTrust Ins Co of KS Inc	\$507,998	0.0%	\$29,184,739	\$16,198,103	\$12,986,635
11592	International Fidelity Ins Co	\$507,848	0.0%	\$246,825,231	\$143,002,263	\$103,822,969
14265	Indiana Lumbermens Mut Ins Co	\$494,146	0.0%	\$87,988,984	\$71,026,980	\$16,962,003
10346	Employers Preferred Ins Co	\$491,223	0.0%	\$580,620,781	\$374,417,536	\$206,203,245
18619	Platte River Ins Co	\$477,552	0.0%	\$122,254,095	\$84,509,136	\$37,744,959
36307	Gray Ins Co	\$476,100	0.0%	\$290,853,227	\$187,712,646	\$103,140,581
10052	Chubb Natl Ins Co	\$473,837	0.0%	\$262,299,950	\$146,085,120	\$116,214,830
14494	Merchants Bonding Co a Mut	\$467,328	0.0%	\$119,784,546	\$42,567,931	\$77,216,615
22756	Horace Mann Prop & Cas Ins Co	\$464,712	0.0%	\$257,241,215	\$153,077,899	\$104,163,316
22608	National Specialty Ins Co	\$460,307	0.0%	\$50,784,337	\$20,575,281	\$30,209,056
12305	Accident Fund Natl Ins Co	\$457,644	0.0%	\$202,142,844	\$151,851,653	\$50,291,191
12866	T H E Ins Co	\$449,803	0.0%	\$177,689,689	\$122,258,167	\$55,431,523
16217	National Farmers Union Prop & Cas	\$449,090	0.0%	\$209,636,907	\$146,920,893	\$62,716,014
38601	MIC Prop & Cas Ins Corp	\$436,928	0.0%	\$97,862,599	\$44,391,879	\$53,470,720
40134	Castlepoint Natl Ins Co	\$431,598	0.0%	\$479,475,670	\$359,477,233	\$119,998,437
25224	Great Divide Ins Co	\$429,961	0.0%	\$234,287,025	\$169,009,299	\$65,277,726
20362	Mitsui Sumitomo Ins Co of Amer	\$423,964	0.0%	\$789,763,989	\$491,538,554	\$298,225,435
37540	Beazley Ins Co Inc	\$415,653	0.0%	\$237,009,995	\$117,628,525	\$119,381,470
10499	Corepointe Ins Co	\$411,717	0.0%	\$219,469,324	\$87,211,654	\$132,257,670
12750	Evergreen Natl Ind Co	\$401,897	0.0%	\$50,763,235	\$17,111,404	\$33,651,831
21865	Associated Ind Corp	\$397,097	0.0%	\$90,981,351	\$9,823,997	\$81,157,354
16578	Fidelity Natl Prop & Cas Ins Co	\$393,510	0.0%	\$112,175,445	\$7,565,221	\$104,610,224
11832	Health Care Industry Liab Recip Ins	\$384,325	0.0%	\$42,070,437	\$32,943,937	\$9,126,501
11598	Applied Medico Legal Solutions RRG	\$382,185	0.0%	\$92,319,499	\$67,201,571	\$25,117,928
14460	Podiatry Ins Co Of Amer	\$367,927	0.0%	\$333,929,937	\$232,686,207	\$101,243,730
24319	Darwin Select Ins Co	\$364,520	0.0%	\$189,314,014	\$128,087,410	\$61,226,603
15865	NCMIC Ins Co	\$362,907	0.0%	\$583,108,074	\$364,880,800	\$218,227,274
29700	North Amer Elite Ins Co	\$362,189	0.0%	\$74,750,400	\$40,415,328	\$34,335,072
24066	American Fire & Cas Co	\$361,969	0.0%	\$177,463,340	\$130,976,672	\$46,486,668
25496	Torus Natl Ins Co	\$358,613	0.0%	\$112,643,236	\$40,846,750	\$71,796,486
41424	Pennsylvania Manufacturers Ind Co	\$357,291	0.0%	\$190,100,338	\$112,543,941	\$77,556,397
24031	Northland Cas Co	\$355,645	0.0%	\$102,448,996	\$69,807,712	\$32,641,284
42048	Diamond State Ins Co	\$354,088	0.0%	\$154,076,906	\$52,991,302	\$101,085,604
23426	Oklahoma Surety Co	\$353,361	0.0%	\$28,725,411	\$9,997,117	\$18,728,294
36650	Guarantee Co Of N Amer USA	\$350,522	0.0%	\$214,272,135	\$72,548,698	\$141,723,437
42498	Cameron Natl Ins Co	\$350,407	0.0%	\$9,924,203	\$1,646,938	\$8,277,265
22551	Mitsui Sumitomo Ins USA Inc	\$349,646	0.0%	\$114,395,125	\$54,618,758	\$59,776,367
21784	Firemens Ins Co Of Washington DC	\$349,561	0.0%	\$82,489,218	\$52,541,748	\$29,947,470
44121	Oms Natl Ins Co Rrg	\$346,773	0.0%	\$382,982,549	\$216,369,741	\$166,612,808
24724	First Natl Ins Co Of Amer	\$339,725	0.0%	\$228,769,845	\$180,297,987	\$48,471,858
10216	American Contractors Ind Co	\$339,238	0.0%	\$380,441,423	\$289,168,456	\$91,272,968
24732	General Ins Co Of Amer	\$338,932	0.0%	\$1,999,941,310	\$1,692,800,728	\$307,140,582
44105	Ophthalmic Mut Ins Co RRG	\$334,201	0.0%	\$245,951,335	\$96,417,837	\$149,533,498
10794	Companion Commercial Ins Co	\$329,458	0.0%	\$22,763,819	\$3,615,498	\$19,148,321

## *Property and Casualty (Cont.)*

NAIC	Company Name	AR Premium	Market Share	Assets	Liabilities	Capital & Surplus
44393	West Amer Ins Co	\$325,213	0.0%	\$331,118,934	\$68,267,095	\$262,851,839
10340	Stonington Ins Co	\$321,982	0.0%	\$76,174,651	\$20,156,391	\$56,018,260
13269	Zenith Ins Co	\$319,804	0.0%	\$1,646,334,188	\$1,202,624,840	\$443,709,348
12572	Selective Ins Co Of Amer	\$319,041	0.0%	\$1,708,278,240	\$1,338,357,185	\$369,921,055
26832	Great Amer Alliance Ins Co	\$317,447	0.0%	\$31,293,415	\$439,978	\$30,853,437
13307	Lexon Ins Co	\$308,062	0.0%	\$136,142,939	\$92,169,244	\$43,973,695
15580	Scottsdale Ind Co	\$299,461	0.0%	\$143,670,404	\$107,704,283	\$35,966,121
19941	American Commerce Ins Co	\$295,512	0.0%	\$312,778,669	\$194,627,508	\$118,151,160
10020	United Educators Ins RRG Inc	\$294,127	0.0%	\$727,883,191	\$474,601,573	\$253,281,619
32786	Progressive Specialty Ins Co	\$292,935	0.0%	\$994,299,409	\$526,978,216	\$467,321,193
31089	Repwest Ins Co	\$292,003	0.0%	\$243,987,736	\$149,703,657	\$94,284,079
36161	Travelers Prop Cas Ins Co	\$290,252	0.0%	\$224,134,374	\$157,503,880	\$66,630,494
10353	Ooida RRG Inc	\$288,019	0.0%	\$61,945,372	\$41,863,805	\$20,081,567
10083	The Natl Catholic RRG Inc	\$287,366	0.0%	\$65,733,282	\$47,031,557	\$18,701,725
42897	American Serv Ins Co Inc	\$273,693	0.0%	\$111,578,123	\$72,952,842	\$38,625,281
27847	Insurance Co Of The West	\$270,547	0.0%	\$1,032,332,100	\$614,841,246	\$417,490,854
12873	Privilege Underwriters Recp Exch	\$270,487	0.0%	\$132,121,231	\$78,933,311	\$53,187,920
36463	Discover Prop & Cas Ins Co	\$268,747	0.0%	\$148,799,527	\$85,614,620	\$63,184,907
10069	Housing Authority Prop A Mut Co	\$266,072	0.0%	\$159,655,226	\$49,477,250	\$110,177,976
10815	Verlan Fire Ins Co MD	\$263,470	0.0%	\$24,189,478	\$59,779	\$24,129,699
25976	Utica Mut Ins Co	\$255,604	0.0%	\$2,110,616,883	\$1,367,948,006	\$742,668,877
18430	Agricultural Workers Mut Auto Ins	\$254,478	0.0%	\$66,508,064	\$37,761,898	\$28,746,166
10367	Avemco Ins Co	\$250,014	0.0%	\$101,851,841	\$38,445,432	\$63,406,409
20621	OneBeacon Amer Ins Co	\$247,547	0.0%	\$88,514,868	\$13,447,896	\$75,066,972
35505	Rockwood Cas Ins Co	\$246,562	0.0%	\$231,130,760	\$160,595,859	\$70,534,901
32778	Washington Intl Ins Co	\$242,178	0.0%	\$116,966,667	\$47,554,411	\$69,412,256
21970	OneBeacon Ins Co	\$240,747	0.0%	\$1,265,708,660	\$390,509,898	\$875,198,762
40266	CMG Mortgage Ins Co	\$234,833	0.0%	\$344,598,681	\$235,077,822	\$109,520,859
15563	SeaBright Ins Co	\$234,035	0.0%	\$890,130,924	\$582,575,496	\$307,555,428
31887	Coface N Amer Ins Co	\$233,591	0.0%	\$142,098,588	\$72,440,557	\$69,658,031
40444	Old Republic Surety Co	\$229,562	0.0%	\$98,930,849	\$50,213,920	\$48,716,929
21172	Vanliner Ins Co	\$227,776	0.0%	\$302,709,883	\$191,856,303	\$110,853,580
27740	North Pointe Ins Co	\$224,374	0.0%	\$83,105,620	\$57,203,736	\$25,901,884
22578	Horace Mann Ins Co	\$220,535	0.0%	\$414,446,305	\$247,546,880	\$166,899,425
11206	Housing Enterprise Ins Co Inc	\$216,759	0.0%	\$50,497,916	\$26,531,450	\$23,966,466
30325	Zale Ind Co	\$216,433	0.0%	\$36,335,367	\$20,310,237	\$16,025,130
18279	Bankers Standard Ins Co	\$214,497	0.0%	\$426,020,942	\$307,624,802	\$118,396,140
19984	ACIG Ins Co	\$214,331	0.0%	\$367,552,087	\$266,596,962	\$100,955,125
44237	Mental Health RRG	\$213,240	0.0%	\$23,792,905	\$12,163,102	\$11,629,803
37710	First Amer Prop & Cas Ins Co	\$209,613	0.0%	\$87,915,605	\$45,500,972	\$42,414,633
40258	Chartis Cas Co	\$202,226	0.0%	\$44,748,491	\$2,096,885	\$42,651,606
28258	Continental Ind Co	\$201,959	0.0%	\$91,927,903	\$49,282,070	\$42,645,833
20370	AXIS Reins Co	\$199,138	0.0%	\$2,501,184,513	\$1,744,382,633	\$756,801,880
19530	Hallmark Natl Ins Co	\$192,096	0.0%	\$73,926,277	\$52,718,599	\$21,207,678
10671	The Gray Cas & Surety Co	\$191,334	0.0%	\$16,516,073	\$2,329,843	\$14,186,231
14788	NGM Ins Co	\$190,153	0.0%	\$2,120,072,716	\$1,281,639,038	\$838,433,678
15962	Kansas Bankers Surety Co	\$188,355	0.0%	\$171,247,479	\$23,451,292	\$147,796,187
31232	Work First Cas Co	\$188,179	0.0%	\$44,579,974	\$36,767,989	\$7,811,985
41394	Benchmark Ins Co	\$174,425	0.0%	\$136,882,441	\$86,747,838	\$50,134,603
18694	Great Midwest Ins Co	\$171,080	0.0%	\$86,859,859	\$33,801,885	\$53,057,974
37923	Seaworthy Ins Co	\$170,411	0.0%	\$100,418,083	\$55,073,368	\$45,344,715
41491	Geico Cas Co	\$164,460	0.0%	\$1,712,582,816	\$1,050,756,065	\$661,826,751
37060	Old United Cas Co	\$161,642	0.0%	\$522,523,803	\$260,516,164	\$262,007,639
26662	Milwaukee Cas Ins Co	\$161,172	0.0%	\$30,079,540	\$16,659,321	\$13,420,219

## *Property and Casualty (Cont.)*

NAIC	Company Name	AR Premium	Market Share	Assets	Liabilities	Capital & Surplus
44130	Paratransit Ins Co Mut RRG	\$160,406	0.0%	\$23,273,930	\$12,693,766	\$10,580,164
29530	AXA Art Ins Corp	\$155,580	0.0%	\$61,642,676	\$31,760,446	\$29,882,230
26565	Ohio Ind Co	\$153,798	0.0%	\$121,063,430	\$75,874,872	\$45,188,558
23353	Meridian Security Ins Co	\$150,502	0.0%	\$113,452,841	\$48,421,886	\$65,030,955
28886	Transguard Ins Co Of Amer Inc	\$145,261	0.0%	\$227,970,366	\$118,283,479	\$109,686,887
10235	American Southern Ins Co	\$144,521	0.0%	\$95,764,964	\$58,817,477	\$36,947,487
25887	United States Fidelity & Guar Co	\$137,403	0.0%	\$4,797,215,673	\$2,169,748,101	\$2,627,467,572
35408	Imperium Ins Co	\$134,586	0.0%	\$384,220,986	\$249,182,609	\$135,038,378
32271	Dallas Natl Ins Co	\$133,932	0.0%	\$327,709,345	\$270,102,729	\$57,606,616
38962	Genesis Ins Co	\$133,425	0.0%	\$189,749,161	\$54,581,241	\$135,167,920
29157	United WI Ins Co	\$131,563	0.0%	\$344,373,055	\$276,472,489	\$67,900,566
36072	National Guardian RRG Inc	\$128,062	0.0%	\$16,313,991	\$10,333,795	\$5,980,196
10084	Title Industry Assur Co RRG	\$126,456	0.0%	\$6,577,484	\$3,582,579	\$2,994,905
10817	Plateau Cas Ins Co	\$126,232	0.0%	\$32,816,364	\$14,295,221	\$18,521,144
12754	Medicus Ins Co	\$124,220	0.0%	\$89,852,405	\$58,014,891	\$31,837,514
33022	AXA Ins Co	\$122,617	0.0%	\$193,165,983	\$72,476,805	\$120,689,178
13613	College RRG Inc	\$121,701	0.0%	\$15,183,427	\$10,108,015	\$5,075,412
10476	STICO Mut Ins Co RRG	\$119,283	0.0%	\$21,240,305	\$10,312,938	\$10,927,368
25984	Graphic Arts Mut Ins Co	\$118,028	0.0%	\$126,526,568	\$78,340,036	\$48,186,532
13978	Florists Mut Ins Co	\$114,521	0.0%	\$159,759,783	\$118,178,608	\$41,581,175
24104	Ohio Farmers Ins Co	\$110,990	0.0%	\$2,131,875,807	\$606,312,379	\$1,525,563,428
34347	Colonial Amer Cas & Surety Co	\$110,882	0.0%	\$24,420,360	\$1,420,049	\$23,000,311
13126	Midwest Builders Cas Mut Co	\$105,391	0.0%	\$72,982,194	\$33,162,865	\$39,819,329
36927	Colony Specialty Ins Co	\$103,042	0.0%	\$71,648,264	\$46,442,936	\$25,205,328
14990	Pennsylvania Natl Mut Cas Ins Co	\$101,980	0.0%	\$1,036,788,018	\$563,129,668	\$473,658,350
36153	Aetna Ins Co of CT	\$100,604	0.0%	\$22,370,829	\$7,335,774	\$15,035,055
22748	Pacific Employers Ins Co	\$96,956	0.0%	\$3,329,042,932	\$2,243,230,507	\$1,085,812,425
31968	Merastar Ins Co	\$93,768	0.0%	\$37,734,033	\$29,015,460	\$8,718,574
10222	PACO Assur Co Inc	\$89,501	0.0%	\$72,458,380	\$42,300,675	\$30,157,705
24775	St Paul Guardian Ins Co	\$88,305	0.0%	\$76,411,867	\$50,978,295	\$25,433,572
10200	Hiscox Ins Co Inc	\$82,874	0.0%	\$97,085,393	\$44,803,675	\$52,281,718
35181	Executive Risk Ind Inc	\$80,993	0.0%	\$2,899,922,490	\$1,799,285,291	\$1,100,637,199
19399	AIU Ins Co	\$80,125	0.0%	\$2,412,144,689	\$1,790,059,373	\$622,085,316
19348	Capson Physicians Ins Co	\$78,856	0.0%	\$14,942,900	\$8,081,550	\$6,861,350
35386	Fidelity & Guar Ins Co	\$78,551	0.0%	\$19,507,977	\$243,789	\$19,264,188
12209	Restoration RRG Inc	\$76,990	0.0%	\$50,466,143	\$31,853,356	\$18,612,787
11579	Old Glory Ins Co	\$70,888	0.0%	\$19,432,708	\$11,418,369	\$8,014,338
42986	Standard Guar Ins Co	\$70,718	0.0%	\$188,937,295	\$94,860,550	\$94,076,745
12718	Developers Surety & Ind Co	\$69,214	0.0%	\$116,129,713	\$41,598,459	\$74,531,254
19224	St Paul Protective Ins Co	\$68,957	0.0%	\$506,799,820	\$282,596,621	\$224,203,198
10752	Healthcare Safety & Protection RRG I	\$68,877	0.0%	\$5,151,437	\$3,360,622	\$1,790,815
43702	Tower Natl Ins Co	\$67,515	0.0%	\$49,537,674	\$37,749,366	\$11,788,308
14249	Founders Ins Co	\$67,476	0.0%	\$246,076,431	\$170,609,520	\$75,466,911
26797	Housing Authority RRG Inc	\$64,547	0.0%	\$305,762,623	\$113,332,922	\$192,429,700
39527	Heritage Ind Co	\$61,352	0.0%	\$206,882,135	\$101,924,512	\$104,957,624
14026	Sunland RRG Inc	\$60,502	0.0%	\$2,198,064	\$1,108,840	\$1,089,223
13722	Knightbrook Ins Co	\$60,287	0.0%	\$125,410,868	\$85,918,560	\$39,492,308
25448	American Safety RRG Inc	\$59,573	0.0%	\$20,700,430	\$10,867,813	\$9,832,617
13285	Allegheny Cas Co	\$58,713	0.0%	\$34,171,318	\$14,854,316	\$19,317,003
37893	Ullico Cas Co	\$57,213	0.0%	\$327,720,858	\$380,604,067	\$(52,883,209)
20648	Employers Fire Ins Co	\$51,939	0.0%	\$20,065,092	\$632,203	\$19,432,889
23434	Middlesex Ins Co	\$50,261	0.0%	\$628,239,236	\$390,856,755	\$237,382,481
12297	Petroleum Cas Co	\$48,232	0.0%	\$32,045,828	\$7,927,576	\$24,118,252
12189	Oceanus Ins Co A RRG	\$46,312	0.0%	\$81,860,654	\$61,370,210	\$20,490,443

## *Property and Casualty (Cont.)*

NAIC	Company Name	AR Premium	Market Share	Assets	Liabilities	Capital & Surplus
37206	Contractors Bonding & Ins Co	\$42,968	0.0%	\$190,716,426	\$89,284,493	\$101,431,933
13200	Universal Surety Of Amer	\$42,290	0.0%	\$15,525,377	\$54,685	\$15,470,692
11710	Allied Professionals Ins Co RRG	\$41,627	0.0%	\$31,531,900	\$18,528,597	\$13,003,304
15474	National Lloyds Ins Co	\$40,782	0.0%	\$191,512,556	\$96,954,323	\$94,558,233
15679	National Fire & Ind Exch	\$40,666	0.0%	\$11,534,830	\$6,186,952	\$5,347,878
28339	Gateway Ins Co	\$39,374	0.0%	\$53,456,310	\$43,234,514	\$10,221,796
35963	AF&L Ins Co	\$38,810	0.0%	\$168,678,725	\$168,596,687	\$82,037
22276	Stonewall Ins Co	\$37,758	0.0%	\$90,199,851	\$18,855,119	\$71,344,733
34495	Doctors Co An Interins Exch	\$37,060	0.0%	\$2,769,500,670	\$1,411,151,785	\$1,358,348,885
13177	ARCOA RRG Inc	\$36,505	0.0%	\$12,556,189	\$10,354,774	\$2,201,415
11153	Titan Ins Co Inc RRG	\$36,314	0.0%	\$35,779,085	\$8,252,493	\$27,526,592
10054	Securian Cas Co	\$34,932	0.0%	\$118,804,229	\$51,164,772	\$67,639,457
10243	National Continental Ins Co	\$34,223	0.0%	\$235,230,203	\$190,177,869	\$45,052,334
16810	American Mercury Ins Co	\$33,089	0.0%	\$323,386,466	\$200,422,617	\$122,963,849
12172	Claim Professionals Liab ins Co RRG	\$31,363	0.0%	\$3,076,825	\$1,455,539	\$1,621,286
11267	Security Amer RRG Inc	\$31,068	0.0%	\$4,169,692	\$1,548,260	\$2,621,432
18708	Ambac Assur Corp	\$30,000	0.0%	\$5,808,198,462	\$5,708,198,462	\$100,000,000
10232	American Assoc Of Othodontists RRG	\$29,735	0.0%	\$37,354,236	\$26,434,956	\$10,919,280
11600	Frank Winston Crum Ins Co	\$28,940	0.0%	\$44,052,652	\$30,114,855	\$13,937,797
10754	Spirit Mountain Ins Co RRG Inc	\$28,388	0.0%	\$5,697,184	\$2,812,309	\$2,884,875
37850	Pacific Specialty Ins Co	\$27,572	0.0%	\$334,181,897	\$149,370,747	\$184,811,148
13792	New Home Warranty Ins Co a RRG	\$26,917	0.0%	\$12,664,673	\$6,867,802	\$5,796,871
21903	Procentury Ins Co	\$26,085	0.0%	\$194,916,024	\$157,612,455	\$37,303,569
13791	Aviation Alliance Ins RRG Inc	\$24,850	0.0%	\$2,812,973	\$1,771,655	\$1,041,318
29823	Genworth Residential Mortgage Ins Co	\$24,131	0.0%	\$220,390,870	\$125,593,654	\$94,797,216
10801	Fortress Ins Co	\$23,876	0.0%	\$65,912,447	\$36,295,054	\$29,617,393
12190	American Pet Ins Co	\$22,569	0.0%	\$17,504,158	\$5,709,697	\$11,794,461
16667	United Guar Residential Ins Co of NC	\$22,150	0.0%	\$472,210,262	\$152,408,128	\$319,802,134
33162	Bankers Ins Co	\$21,485	0.0%	\$128,694,785	\$73,553,090	\$55,141,695
10113	Terra Ins Co RRG	\$19,620	0.0%	\$28,849,416	\$12,778,728	\$16,070,688
13179	ProAir RRG Inc	\$16,463	0.0%	\$635,855	\$134,391	\$501,464
10758	Colonial Surety Co	\$16,166	0.0%	\$43,411,493	\$19,804,347	\$23,607,146
22985	Sequoia Ins Co	\$15,674	0.0%	\$233,646,999	\$159,956,270	\$73,690,729
10234	National Serv Contract Ins Co RRG	\$15,595	0.0%	\$12,553,901	\$1,746,956	\$10,806,945
28860	RLI Ind Co	\$14,706	0.0%	\$43,188,713	\$944,419	\$42,244,294
11242	Allied Eastern Ind Co	\$14,571	0.0%	\$37,393,709	\$26,175,351	\$11,218,358
10164	Cpa Mut Ins Co Of Amer RRG	\$14,026	0.0%	\$23,495,690	\$13,360,091	\$10,135,599
26611	Valiant Ins Co	\$14,000	0.0%	\$39,265,243	\$7,005,537	\$32,259,706
11123	Safety First Ins Co	\$13,900	0.0%	\$17,353,445	\$3,310,135	\$14,043,310
10724	Eastern Alliance Ins Co	\$13,844	0.0%	\$167,828,390	\$111,013,904	\$56,814,486
10003	Excess Share Ins Corp	\$13,059	0.0%	\$51,729,834	\$31,248,477	\$20,481,357
36765	Gulf Guar Ins Co	\$13,030	0.0%	\$5,044,182	\$1,139,930	\$3,904,252
15911	American Mining Ins Co Inc	\$12,931	0.0%	\$30,124,603	\$6,612,450	\$23,512,153
26581	Independence Amer Ins Co	\$12,111	0.0%	\$84,696,916	\$30,269,475	\$54,427,441
41238	Trans Pacific Ins Co	\$11,837	0.0%	\$65,748,448	\$17,343,090	\$48,405,358
40169	Metropolitan Cas Ins Co	\$11,087	0.0%	\$194,116,042	\$144,642,011	\$49,474,030
13018	Doctors & Surgeons Natl RRG Inc	\$9,510	0.0%	\$9,956,181	\$7,367,089	\$2,589,092
11197	National Independent Truckers IC RRG	\$8,159	0.0%	\$9,199,076	\$3,773,207	\$5,425,869
13720	CrossFit RRG Inc	\$8,100	0.0%	\$2,203,234	\$1,096,156	\$1,107,078
13580	ARISE Boiler Inspection & Ins Co RRG	\$7,843	0.0%	\$2,541,430	\$638,410	\$1,903,020
36340	Camico Mut Ins Co	\$7,780	0.0%	\$110,254,555	\$72,055,964	\$38,198,592
22713	Insurance Co of N Amer	\$7,733	0.0%	\$831,827,124	\$636,240,380	\$195,586,744
26999	United Guar Mortgage Ind Co	\$7,240	0.0%	\$309,770,693	\$200,412,818	\$109,357,875
27081	Bond Safeguard Ins Co	\$7,138	0.0%	\$77,995,429	\$48,650,428	\$29,345,000



## *Property and Casualty (Cont.)*

NAIC	Company Name	AR Premium	Market Share	Assets	Liabilities	Capital & Surplus
25585	Professionals Direct Ins Co	\$6,388	0.0%	\$21,081,715	\$14,436	\$21,067,279
36560	Service Ins Co	\$6,184	0.0%	\$37,219,139	\$16,830,439	\$20,388,700
29033	Atain Ins Co	\$6,165	0.0%	\$48,632,411	\$18,673,149	\$29,959,262
24503	Catlin Ind Co	\$5,684	0.0%	\$96,506,701	\$19,958,620	\$76,548,081
11825	Care RRG Inc	\$4,964	0.0%	\$13,630,587	\$8,952,477	\$4,678,110
38369	Northern Assur Co Of Amer	\$4,199	0.0%	\$38,429,667	\$3,089,707	\$35,339,960
40940	Western Pacific Mut Ins Co RRG	\$4,117	0.0%	\$134,729,430	\$39,584,385	\$95,145,045
26905	Century Natl Ins Co	\$3,739	0.0%	\$531,636,370	\$194,710,272	\$336,926,098
18740	MGIC Ind Corp	\$3,573	0.0%	\$458,810,184	\$10,469,839	\$448,340,345
13677	Affiliates Ins Recip a RRG	\$3,567	0.0%	\$5,033,538	\$2,020,938	\$3,012,600
20796	21st Century Premier Ins Co	\$3,478	0.0%	\$256,396,258	\$15,779,049	\$240,617,209
43273	Insurors Ind Co	\$3,360	0.0%	\$18,917,849	\$7,816,137	\$11,101,712
11114	St Charles Ins Co RRG	\$3,279	0.0%	\$11,250,427	\$4,340,564	\$6,909,863
11050	Amerisure Partners Ins Co	\$3,249	0.0%	\$58,453,926	\$44,977,261	\$13,476,665
41211	Triton Ins Co	\$2,645	0.0%	\$554,442,970	\$335,082,975	\$219,359,995
11967	General Star Natl Ins Co	\$2,632	0.0%	\$250,653,902	\$69,463,924	\$181,189,978
14366	NASW RRG Inc	\$2,579	0.0%	\$1,982,312	\$538,665	\$1,443,647
32859	Penn Amer Ins Co	\$2,312	0.0%	\$280,357,061	\$116,220,376	\$164,136,685
35629	Association Cas Ins Co	\$1,947	0.0%	\$46,136,644	\$30,516,080	\$15,620,564
22810	Chicago Ins Co	\$1,653	0.0%	\$63,599,241	\$8,865,489	\$54,733,752
11030	Memic Ind Co	\$1,444	0.0%	\$230,624,693	\$141,315,090	\$89,309,603
31453	Financial Pacific Ins Co	\$1,397	0.0%	\$206,012,056	\$121,632,015	\$84,380,041
12293	National Contractors Ins Co Inc RRG	\$1,335	0.0%	\$10,444,302	\$6,682,675	\$3,761,627
12839	Road Contractors Mut Ins Co	\$1,185	0.0%	\$9,535,682	\$6,084,270	\$3,451,408
25933	Universal Surety Co	\$1,093	0.0%	\$133,374,113	\$36,092,471	\$97,281,643
11145	Golden Ins Co RRG	\$1,009	0.0%	\$5,463,781	\$3,264,547	\$2,199,234
22950	Acstar Ins Co	\$967	0.0%	\$68,803,463	\$40,029,989	\$28,773,474
21075	Financial Amer Prop & Cas Ins Co	\$901	0.0%	\$13,086,555	\$2,513,025	\$10,573,530
11231	Generali Us Branch	\$832	0.0%	\$62,166,061	\$34,371,494	\$27,794,567
45934	American Compensation Ins Co	\$805	0.0%	\$67,111,084	\$14,337,397	\$52,773,687
25186	Emc Prop & Cas Ins Co	\$671	0.0%	\$142,252,917	\$72,661,381	\$69,591,535
27073	Nipponkoa Ins Co Ltd US Br	\$629	0.0%	\$252,018,937	\$159,763,864	\$92,255,073
37940	Lexington Natl Ins Corp	\$540	0.0%	\$57,760,590	\$39,336,089	\$18,424,501
10991	Global Intl Ins Co Inc A RRG	\$520	0.0%	\$19,909,562	\$787,660	\$19,121,902
26220	Yosemite Ins Co	\$418	0.0%	\$353,444,265	\$90,029,891	\$263,414,374
12294	Southwest Marine & Gen Ins Co	\$397	0.0%	\$85,632,054	\$46,401,653	\$39,230,401
13242	Titan Ind Co	\$371	0.0%	\$262,311,457	\$85,118,534	\$177,192,923
18759	Genworth Residential Mortgage Assur	\$236	0.0%	\$93,126,355	\$11,864,441	\$81,261,914
11177	First Fin Ins Co	\$216	0.0%	\$507,216,419	\$152,495,016	\$354,721,403
13019	Eastern Advantage Assur Co	\$170	0.0%	\$34,273,067	\$23,798,427	\$10,474,640
16675	Genworth Mortgage Ins Corp Of NC	\$133	0.0%	\$450,151,154	\$301,531,299	\$148,619,855
26379	Accredited Surety & Cas Co Inc	\$100	0.0%	\$23,285,378	\$6,702,766	\$16,582,613
13986	Frankenmuth Mut Ins Co	\$78	0.0%	\$1,015,649,791	\$625,828,941	\$389,820,850
12934	Academic Medical Professionals Ins E	\$75	0.0%	\$3,122,909	\$1,491,024	\$1,631,885
31534	Citizens Ins Co Of Amer	\$51	0.0%	\$1,525,109,120	\$842,474,575	\$682,634,545
	<b>TOTAL</b>	<b>\$4,123,877,557</b>	<b>100.0%</b>			

## Title

NAIC	Company Name	AR Premium	Market Share	Assets	Liabilities	Capital & Surplus
50121	Stewart Title Guar Co	\$12,590,326	25.4%	\$1,000,512,173	\$571,345,437	\$429,166,736
50814	First Amer Title Ins Co	\$9,229,148	18.6%	\$2,346,089,024	\$1,389,726,179	\$956,362,845
50229	Chicago Title Ins Co	\$8,422,121	17.0%	\$1,947,770,071	\$1,035,064,103	\$912,705,968
51586	Fidelity Natl Title Ins Co	\$7,709,910	15.6%	\$1,399,076,670	\$951,874,887	\$447,201,783
50520	Old Republic Natl Title Ins Co	\$7,651,043	15.4%	\$808,548,286	\$464,993,185	\$343,555,101
51020	National Title Ins Of NY Inc	\$1,159,131	2.3%	\$102,685,485	\$63,859,042	\$38,826,442
12522	Agents Natl Title Ins Co	\$813,264	1.6%	\$6,095,278	\$3,451,041	\$2,644,237
50784	Security Title Guarantee Corp Baltim	\$804,880	1.6%	\$12,420,105	\$9,969,865	\$2,450,240
50083	Commonwealth Land Title Ins Co	\$769,944	1.6%	\$613,889,329	\$374,182,393	\$239,706,936
51411	American Guar Title Ins Co	\$263,775	0.5%	\$23,260,717	\$8,641,605	\$14,619,112
51152	WFG Natl Title Ins Co	\$139,755	0.3%	\$36,786,691	\$18,935,747	\$17,850,944
50792	Southern Title Ins Corp	\$15,735	0.0%	\$12,989,671	\$43,428,653	\$(30,438,982)
51632	EnTitle Ins Co	\$1,701	0.0%	\$21,806,046	\$6,584,063	\$15,221,983
50031	Aviation Title Ins Co	\$-	0.0%	\$305,482	\$63,509	\$241,973
	<b>TOTAL</b>	<b>\$49,570,733</b>	<b>100.00%</b>			