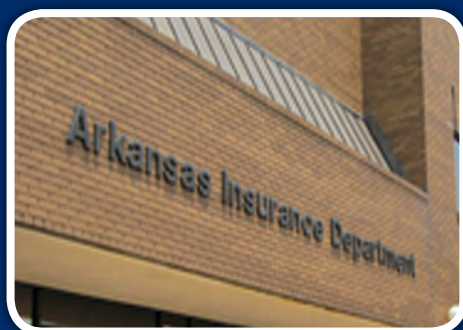


Arkansas Insurance Department

2015 Annual Report

Report for Period
January 1, 2015 to December 31, 2015
Inclusive



1200 West Third Street
Little Rock, AR 72201-1904
1-501-371-2600, 1-800-282-9134
www.insurance.arkansas.gov



The Honorable Asa Hutchinson, Governor of Arkansas

I am pleased to present to you the 2015 Annual Report of the Arkansas Insurance Department. This report is established by the provisions of Arkansas Code Ann. § 23-61-112 and summarizes the activities of the Arkansas Insurance Department for the calendar year ending December 31, 2015.

In addition to the required financial disclosures and listing of companies operating in Arkansas, this report highlights the work of the Arkansas Insurance Department on behalf of Arkansas insurance consumers.

Sincerely,

A handwritten signature in black ink, appearing to read "Allen W. Kerr".

Allen W. Kerr
Insurance Commissioner

Table of Contents

A Message from the Commissioner	1
History of Insurance Commissioners	2
AID Leadership Team	5
AID Divisions and Programs	6
AID Receipts and Expenditures	9
AID Services:	
Consumer Complaints and Inquiries	10
Consumer Recoveries	10
Medicare Recipients Served	10
Producers & Business Entities (Agents and Agencies)	11
New Company Admissions	11
Total Licensed Companies	11
AID Examinations:	
Financial Examinations	12
Financial Analysis	12
Prepaid Funeral Benefits Contracts	12
Insurance Fraud Investigations	12
Legal Proceedings	12
Liquidations and Rehabilitations	12
Insurers Listed by Arkansas Premium as of 12/31/2014	
Domestic Surplus Lines	13
Farmers Mutual Aid Associations	13
Fraternal Organizations	13
HMO and HMDI Companies	14
Life and Health Companies	14
Property and Casualty Companies	22
Title Companies	34



A Message From the Commissioner

It is my honor to present my second annual report of the Arkansas Insurance Department (AID) covering the year 2015—my first year serving as your Commissioner. When I took office, I relied upon my 30 years of experience in the insurance industry as a producer and small business owner to instill a new philosophy at AID where responsibility and common sense took the primary role in the execution of our consumer protection and regulatory responsibilities while also encouraging the growth of business.

I am proud to report that 2015 showed our new philosophy is succeeding.

We ended last year with 115,137 licensed agents and producers—a 32% increase over 2014. Coupled with a 27% annual increase in licensed business entities, AID has demonstrated that Arkansas is indeed open for business for the insurance industry.

Our Consumer Services Division received 2,455 complaints and closed 2,290 cases in 2015. CSD assists insurance consumers with complaints and inquiries regarding insurance companies, producers, and adjusters. It also recovers, on behalf of Arkansas consumers, money in excess of amounts initially offered by insurance companies. Last year, we recovered \$3,843,969 for Arkansans—\$40,000 more than in 2014.

Our Legal Division also fights on behalf of Arkansas consumers, making recoveries and ordering restitution against producers and companies that are found to have violated the Insurance Code. In 2015, a total of \$136,211 was captured on behalf of Arkansans, a 190% increase over the year before.

In the last year, AID has also increased outreach to senior Arkansans through our very important Senior Health Insurance Information Program (SHIIP).

I am also very proud of the fact that total written premium in Arkansas for 2015 totaled \$12.87 billion—an increase over the previous year of \$645.6 million.

I hope that, upon review of the information contained in our Annual Report, you will agree the Arkansas Insurance Department is encouraging new business in our state while honoring our charge to advocate on behalf of the hardworking Arkansas taxpayers who buy their products. I salute our professional men and women who are doing an excellent job on behalf of their fellow Arkansans.

It is my pleasure to serve you.

Mission Statement

The purpose of the State Insurance Department is to serve and protect the public interest by the equitable enforcement of the state's laws and regulations affecting the insurance industry.

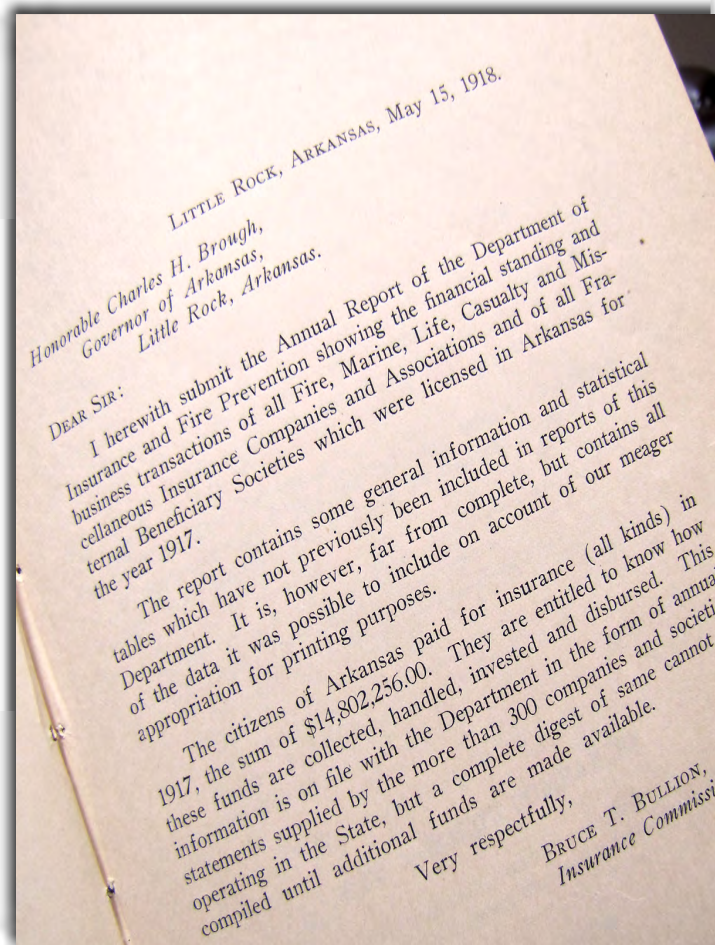
The primary mission of the State Insurance Department shall be consumer protection through insurer solvency and market conduct regulation, and fraud prosecution and deterrence.

History of Insurance Commissioners

AUDITORS OF STATE

The work of the Insurance Department was formerly placed by law in the office of the Auditor of State. The "Insurance Bureau" was established in the Auditor's office by the Act of April 25, 1873, the Auditor being charged by same with the execution of the laws of the state relating to insurance.

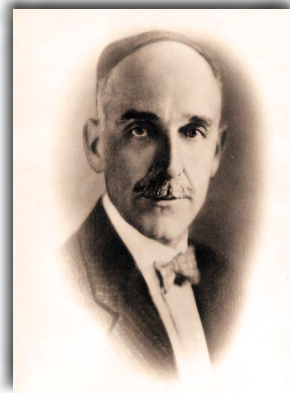
The General Assembly of 1917, by Act No. 190, approved March 7, 1917, on account of the greatly increased volume of work required to be done by the insurance department, separated same from the office of the Auditor of State and created the State Insurance Department. The head of the Insurance Department shall be an Insurance Commissioner appointed by the Governor with the advice and consent of the Senate. The Insurance Commissioner shall enforce the provisions of the Arkansas Insurance Code and shall execute the duties imposed upon him or her by the Arkansas Insurance Code.



Ex-officio Commissioners of Insurance

- 1873 - 1874 Stephen Wheeler
- 1874 - 1877 W. R. Miller
- 1877 - 1882 John Crawford
- 1883 - 1886 A. W. Files (Died in office. W. R. Miller was appointed to fulfill the unexpired term.)
- 1887 - 1892 W. S. Dunlap
- 1893 - 1896 C. B. Miles
- 1897 - 1900 Clay Sloan
- 1901 - 1904 T. C. Monroe
- 1905 - 1908 A. E. Moore
- 1909 - 1912 John R. Jobe
- 1912 - 1913 John N. Oathout (Elected Auditor September 1912, died June 20, 1913. L. Coffman appointed June 23, 1913.)
- 1913 - 1914 L. L. Coffman (Resigned March 4, 1914. M. F. Dickinson was appointed to fulfill the unexpired term.)
- 1915 - 1916 M. F. Dickinson

INSURANCE COMMISSIONERS



1917-1924
Bruce T. Bullion



1924-1925/1937-1941
M. J. Harrison



1925-1927/1929-1931
W. E. Floyd



1927-1929
J. S. Maloney



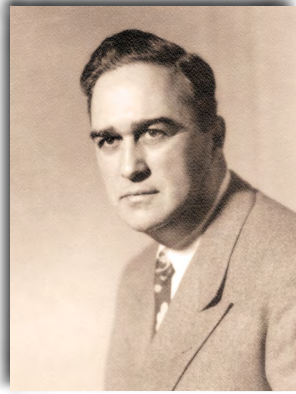
1931-1933
A. D. Dulaney



1933-1937
U. A. Gentry



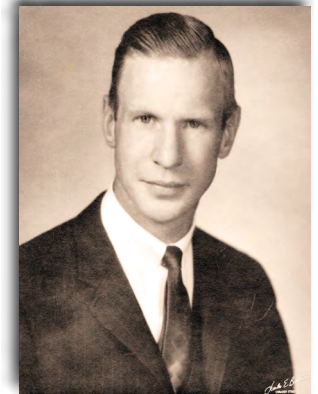
1941-1945/1949-1953
J. Herbert Graves



1945-1949
Jack McKenzie



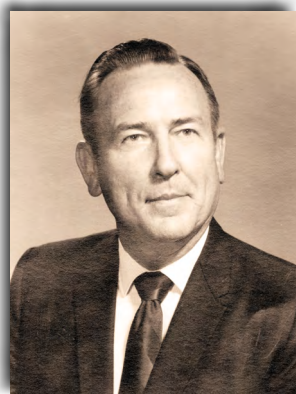
1953-1967
Harvey G. Combs



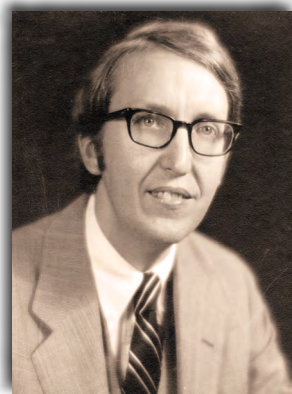
1967-1968
John Norman Harkey



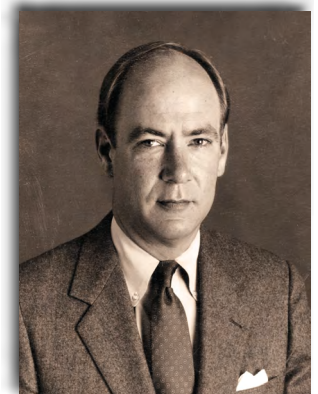
1968-1970
Allen W. Horne



1970-1972
A. Gene Sykes



1972-1976
Ark Monroe, III



1976-1982
*W. H. L. Woodyard, III



1983-1985
Linda N. Garner



1985-1988
Robert M. Eubanks, III



1988 - 1990
Ron Taylor



1990-1996
*Lee Douglass



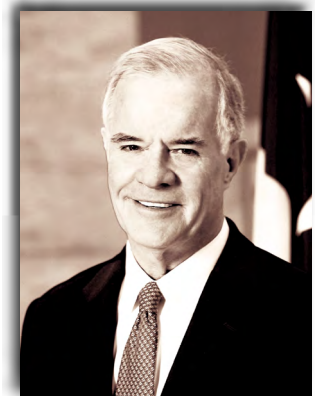
1997-2005
*Mike Pickens



2005-2008
Julie Benafield Bowman



2009
Lenita Blasingame



2009-2015
Jay Bradford



2015
Allen Kerr

*President of the National Association of Insurance Commissioners (NAIC)

The Arkansas Insurance Department is accredited by the NAIC. To achieve this accreditation, the Department must meet stringent national standards that demonstrate it effectively regulates insurance companies for solvency. The Arkansas Insurance Department views accreditation by the NAIC as an important part of our commitment to the citizens of Arkansas. Accreditation standards enable us to provide expanded consumer protections and to institute and maintain the highest standards in financial regulation. NAIC repeats the accreditation review every five years to confirm that the Department continues to meet all requirements. The Department was most recently accredited in March 2016.

AID Leadership Team

ADMINISTRATION

Allen Kerr, State Insurance Commissioner 501-371-2621 allen.kerr@arkansas.gov
Russ Galbraith, Chief Deputy Commissioner 501-371-2620 russ.galbraith@arkansas.gov
Ryan James, Communications Director 501-371-2622 ryan.james@arkansas.gov

ACCOUNTING

Courtney Traylor, Assistant Deputy Commissioner 501-371-2608 courtney.traylor@arkansas.gov

COMPLIANCE

Bill Lacy, Manager 501-371-2800 bill.lacy@arkansas.gov

CONSUMER SERVICES

Jackie Smith, Consumer Protection Manager 501-371-2640 jackie.smith@arkansas.gov

CRIMINAL INVESTIGATION

Pat O’Kelley, Assistant Director 501-371-2790 pat.okelley@arkansas.gov

FINANCE

Mel Anderson, Deputy Commissioner Financial Regulation 501-371-2665 mel.anderson@arkansas.gov

HEALTH INSURANCE RATE REVIEW

Dan Honey, Deputy Commissioner 501-683-3146 dan.honey@arkansas.gov

HUMAN RESOURCES

Andrea May, Personnel Manager 501-371-2818 andrea.may@arkansas.gov

INFORMATION SYSTEMS

Carder Hawkins, Deputy Commissioner Information Services 501-371-2657 carder.hawkins@arkansas.gov

LEGAL

Suzanne Tipton, Deputy Commissioner & General Counsel 501-371-2820 suzanne.tipton@arkansas.gov

LICENSE

Peggy Dunlap, Licensing Manager 501-371-2750 peggy.dunlap@arkansas.gov

LIQUIDATION

Steve Uhrynowycz, Deputy Receiver 501-371-2776 steve.uhrynowycz@arkansas.gov

PUBLIC EMPLOYEE CLAIMS

Nathan Culp, Director 501-371-2700 nathan.culp@arkansas.gov

RISK MANAGEMENT

Drew Carpenter, Director 501-371-2690 drew.carpenter@arkansas.gov

REGULATORY HEALTH LINK

Zane Chrisman, Deputy Commissioner 501-683-4170 zane.chrisman@arkansas.gov

SENIOR HEALTH INSURANCE INFORMATION PROGRAM (SHIIP)

Beth Moore, Program Manager 501-371-2782 beth.moore@arkansas.gov

AID Divisions and Programs

ADMINISTRATION

501-371-2620

insurance.administration@arkansas.gov

The Administration Division oversees the overall operations of Arkansas Insurance Department (AID), establishes Department policy, handles media inquiries, security, and coordinates consumer protection and outreach activities. Each of the divisions work collectively to ensure the Department's mission of consumer protection is fulfilled. This staff of approximately 170 highly skilled and dedicated employees is committed to serving the citizens of Arkansas every day.

ACCOUNTING

501-371-2605

insurance.accounting@arkansas.gov

The Accounting Division collects and oversees fees and premium taxes from all insurance companies conducting business in the State of Arkansas. These fees not only fund AID (no monies are received from the state's General Revenue Fund), but the taxes are also used to contribute to the state's Police and Firemen Pension Funds, and General Revenue. The division handles all purchasing and accounts payable for AID, as well as the development of budgets.

COMPLIANCE

501-371-2800

insurance.compliance@arkansas.gov

Compliance is responsible for monitoring and regulating rate and form filing activities. All insurance companies transacting business in the State of Arkansas for life, health, property and casualty coverage must submit their forms to compliance for approval. The forms are then reviewed to ensure compliance with state law. For most lines of insurance requests for rate changes where legally required to be filed are effective after the expiration of the appropriate waiting period after they are filed, or their effective date **if subject to prior approval**.

CONSUMER SERVICES

501-371-2640 or 800-852-5494

insurance.consumers@arkansas.gov

The Consumer Services Division (CSD) assists insurance consumers with complaints and inquiries regarding insurance companies, producers, and adjusters. CSD investigates all complaints, working with the insurance company and the consumer to determine the appropriate course of action. CSD travels statewide to provide educational information and materials, and in the event of significant storm damage, travels to damaged areas to assist homeowners with filing claims and procuring emergency living expenses.

CRIMINAL INVESTIGATION

501-371-2790 or 866-660-0888

insurance.fraud@arkansas.gov

The Criminal Investigation Division (CID) receives hundreds of referrals of suspected fraud each year. CID investigates and prosecutes all categories of insurance fraud. Investigations that result in a finding of a criminal violation are referred to the appropriate prosecuting attorney's office.

FINANCE

501-371-2665

insurance.finance@arkansas.gov

The primary goal of the Finance Division is to protect insurance consumers through effective solvency regulation by monitoring the financial condition of all domestic and foreign insurance companies operating in the state; conducting financial and market conduct examinations; reviewing other financial information and reports filed by insurance entities, such as business plans, reinsurance agreements, merger and acquisition documents, company formation documents, market research and feasibility studies; reviews and approves the licensing of insurers, captives, risk retention groups, surplus lines, charitable annuities, continuing care facilities, motor clubs, reinsurance intermediaries, service contract providers, and accredited/trusted reinsurers; examines prepaid funeral contracts and conducts financial examinations of licensees' trust funds and custodial accounts; and oversees statutory security deposits of insurance companies.

The Health Insurance Rate Review Division (HIRRD) was created in 2010 for the purpose of protecting consumers and employers from unreasonable health insurance premium rate increases. With funding through the Department of Health and Human Services (HHS), HIRRD has endeavored to create a health insurance education, outreach and training unit to improve the health insurance rate review and reporting process. The development of an Arkansas All-Payer Claims Database (APCD), in collaboration with the Arkansas Center for Health Improvement (ACHI), is a HIRRD project which will ultimately provide medical pricing information to support consumers and other stakeholders when making health-care decisions. Additionally, pursuant to Act 1233 of 2015, AID is charged with implementing further healthcare transparency initiatives. HIRRD will be the division primarily responsible for these efforts.

HUMAN RESOURCES**501-371-2818*****insurance.human.resources@arkansas.gov***

The Human Resources Division is responsible for the recruiting and hiring process, benefits, compensation and retirement, employee training and development, compliance with employment laws and regulations, and personnel budget preparation and management.

INFORMATION SYSTEMS**501-371-2657*****insurance.information.systems@arkansas.gov***

The Information Systems Division (IS) keeps AID operating effectively and efficiently in the ever-changing world of technology. This is achieved through the IS strategy of leveraging up-to-date, state of the art software and systems technology to continually increase productivity. The result is minimal growth in the number of AID staff in the face of continued growth in the size of the regulated industry and revenue.

LEGAL**501-371-2820*****insurance.legal@arkansas.gov***

The Legal Division represents AID, participating in numerous investigations, market conduct examinations, drafting legislation, rules, bulletins, directives, legal opinions, and investigating consumer complaints. Division attorneys represent the Commissioner and AID staff in lawsuits or other proceedings, administrative hearings and court appeals pertaining to alleged licensee insurance code or rule violations by a licensee, and insurance company acquisitions, mergers, reinsurance agreements and similar transactions. Prior to each Legislative Session, the Division prepares the recommendations of the Commissioner as to amendments or supplementation of laws affecting insurance and as to matters affecting the Department to be addressed in the next Legislative Session. Legislation passed during the most recent non-budget session can be viewed at www.insurance.arkansas.gov/Legal/Bulletins/9-2015.pdf.

LICENSE**501-371-2750*****insurance.license@arkansas.gov***

The Licensing Division is responsible for the licensing of resident and nonresident producers, adjusters, title agents, and business entities that are soliciting, selling or negotiating insurance in the State of Arkansas. License oversees the producer examinations and investigates all resident applicants by reviewing Arkansas State Police records. It also ensures that necessary laws are followed regarding license renewals and continuing education.

LIQUIDATION**501-371-2776*****insurance.liquidation@arkansas.gov***

The Liquidation Division, acting on behalf of the Insurance Commissioner as Receiver, manages the day to day affairs of insolvent insurance company estates and insolvent prepaid funeral benefit trusts. Although the Liquidation Division performs certain functions on behalf of the Commissioner, individuals employed with this division are not employed by the State of Arkansas and are not considered state employees. Liquidation does not receive any funding from the State of Arkansas. Liquidation administers the Arkansas Life and Health Insurance Guaranty Association (ALHIGA) and the

Arkansas Property & Casualty Guaranty Fund (APCGF). During 2015, APCGF paid over \$1,817,355 to adjust, settle or litigate claims and recovered over \$1,442,306 as a result of twenty non-domestic and one domestic insurance company receiverships. During 2015, ALHIGA provided benefits to Arkansas insureds and claimants totaling more than \$228,816 and recovered over \$829,602 as a result of one domestic and four non-domestic insurance company receiverships.

PUBLIC EMPLOYEE CLAIMS

501-371-2700

insurance.public.employee.claims@arkansas.gov

The Public Employee Claims Division (PECD) is responsible for the investigation and management of more than 3,300 workers' compensation claims filed each year for Arkansas state employees. Workers' compensation coverage is also provided for emergency service volunteers who are accidentally injured while performing services under the call and supervision of the State of Arkansas. PECD encourages state agencies to implement safety programs, hoping to reduce the number of injuries suffered by state employees. PECD personnel give presentations to several audiences each year. The prevention of injuries helps in three areas: 1) improving the quality of life of employees; 2) helping agencies with staffing issues; and 3) reducing workers' compensation costs for the taxpayers of the State of Arkansas.

REGULATORY HEALTH LINK

501-683-4170

insurance.rhld@arkansas.gov

The Regulatory Health Link Division (RHLD) was established in accordance with the Patient Protection and Affordable Care Act (PPACA) of 2010. RHLD is responsible for recommending for certification and monitoring health insurance plans sold through the Arkansas Health Insurance Marketplace (AHIM) and the Federally Facilitated Marketplace (FFM).

RISK MANAGEMENT

501-371-2690

insurance.risk.management@arkansas.gov

The Risk Management Division (Risk) was established to minimize the cost of insurance and surety bonding to Arkansas state agencies, and to analyze and make recommendations on loss control and safety programs in an effort to protect state assets. In 2004, Risk assumed the responsibility of providing insurance coverage, consulting, and loss control services to public schools that choose to participate in the Public School Property and Vehicle Insurance Trust Fund. Property inspections and appraisals are conducted on approximately 5,500 state owned and leased structures, and 2,500 school district structures with insured values of \$14 billion. A vehicle safety program covering 11,000 state agency and public school vehicles has been in effect for many years, resulting in improved loss ratios. Risk also offers on-site advanced defensive driver training at no cost to state agencies and participating schools.

SENIOR HEALTH INSURANCE INFORMATION PROGRAM

501-371-2782 or 800-224-6330

insurance.SHIIP@arkansas.gov

The mission of the Senior Health Insurance Information Program (SHIIP) is to help Arkansans save money and make informed decisions about Medicare. SHIIP counsels Medicare beneficiaries and caregivers about Medicare, MEDIGAP policies, Medicare Advantage, Medicare Part D (drug plans) and Long-term care insurance. The Medicare Beneficiary Specialists who answers calls, offers free and unbiased information regarding medicare health care products, enabling recipients to save thousands of dollars annually on Medicare premiums and co-pays. Recruiting and training volunteers throughout the state to assist Medicare Beneficiaries is another SHIIP responsibility. SHIIP staff and trained volunteers are also available for group and community event presentations. SHIIP produces the Medicare Basic Toolkit and Bridging the Gap publications, both of which are available on the SHIIP website: <http://insurance.arkansas.gov/shiip.htm>.



AID Receipts and Expenditures

Fiscal Year 2015 Receipts

Insurance Department Trust Fund.....	\$ 26,715,852.64
Federal Funds	10,049,323.60
Premium & Other Taxes	194,698,513.35
Licenses, Permits and Fees	33,058,612.79
	\$264,522,302.38

Receipts Detail:

General Revenue	\$ 118,997,119.83
Police & Firemen Pension Funds.....	56,294,528.66
Private Option Healthcare Fund	7,055,939.89

Insurance Department Funds:

Agent License.....	15,855,628.20
Policy Filing Fees.....	18,905.72
Copies	1,226.75
Examiner Travel Expense Reimbursement.....	63,514.09
Governmental Bonding Board Restitution.....	105,495.35
Continuing Education Fees	137,537.00
Pre-Paid Funeral Fees	393,920.00
Workers' Compensation Qualification Fees.....	2,500.00
AMAIT – State Fleet and Property Insurance	7,847,625.00
Insurance Department Trust Fund Fees.....	26,718,292.64
Pre-Paid Funeral Recovery Fund	9,878.61
Criminal Investigation Assessment	821,500.00
Criminal Background Checks – Agents	103,501.40
School – Auto/Property Insurance	7,691,731.38
Federal Grant Draws*	10,052,532.89
Fire Protection Revolving Fund	12,350,924.97
Total Insurance Department Funds	82,174,714.00
	\$264,522,302.38

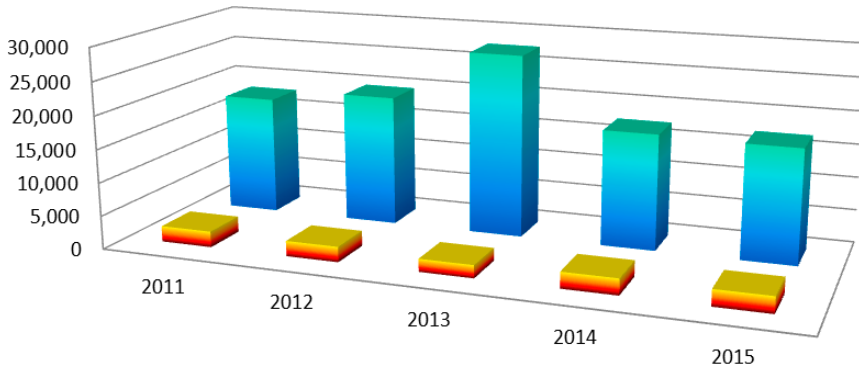
Fiscal Year 2015 Expenditures

Regulatory Services (Insurance Department Budget).....	\$12,452,948.00
--	------------------------

* Arkansas Health Connector, Health Insurance Premium Rate Review, Senior Health Insurance Information Program

AID Services

Complaints and Inquiries



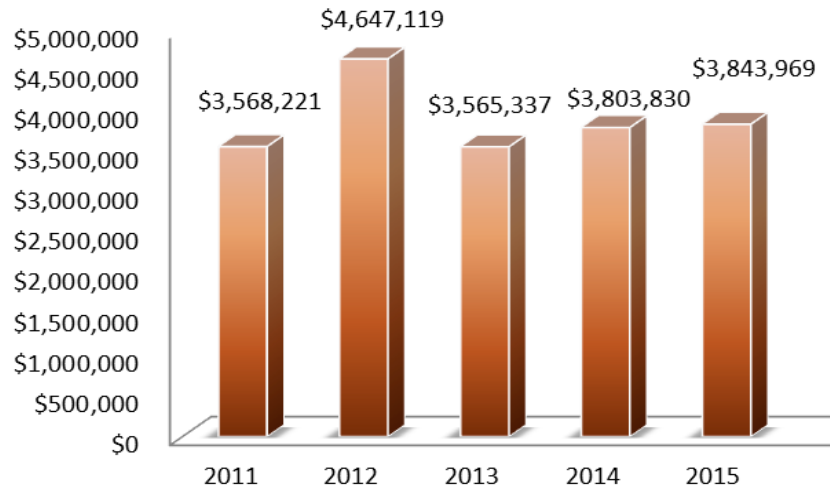
A complaint is a written grievance filed by an insurance consumer or their advocate with our Consumer Services Division (CSD).

Inquiries are informal questions answered by a CSD representative.

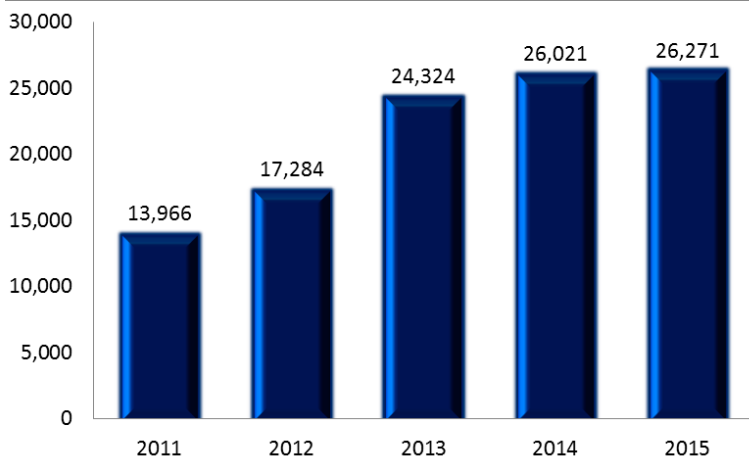
	2011	2012	2013	2014	2015
Complaints	2,391	2,308	1,933	2,432	2,455
Inquiries	18,048	19,801	27,646	17,495	17,227

Recoveries

Recoveries are amounts recovered for consumers by CSD in excess of the amount initially offered by insurance companies.



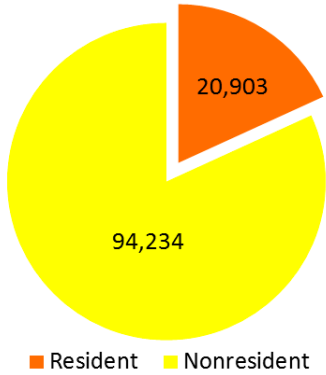
Medicare Recipients Served



The Senior Health Insurance Information Program (SHIIP) provides Medicare counseling, education and assistance to Medicare beneficiaries and their caregivers.

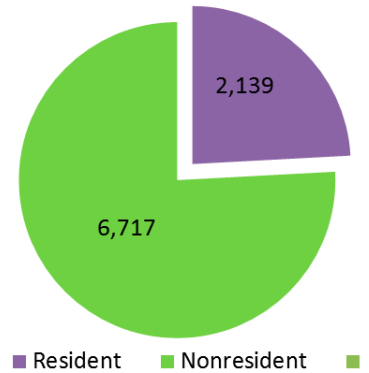
Producers and Business Entities (Agents and Agencies)

Producers and Adjusters



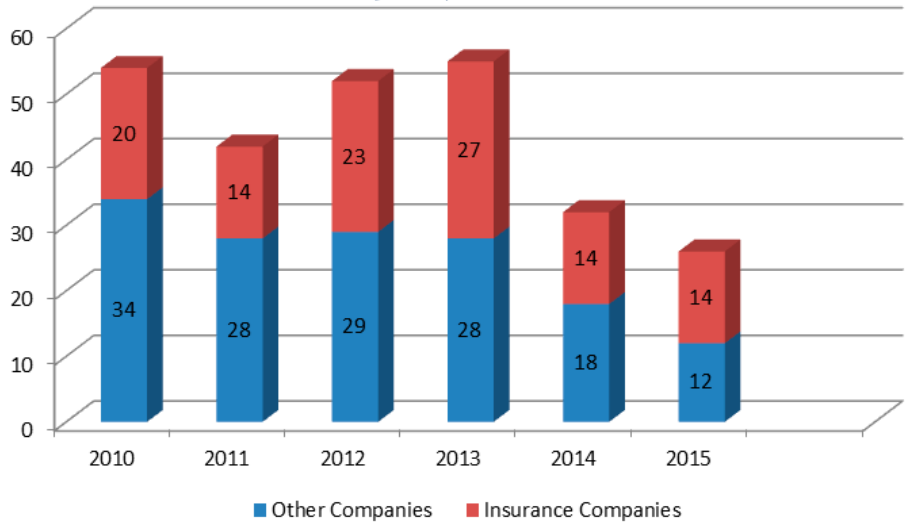
AID License Division licenses resident and nonresident producers, adjusters, title agents and business entities that are soliciting, selling or negotiating insurance in the State of Arkansas. "Resident" means the producer or business entity is based in Arkansas.

Business Entities



New Company Admissions

New company admissions are subject to in-depth analysis by our Finance Division. AID admitted 14 new insurance companies and 12 other companies in 2015. Other companies include automobile clubs, risk retention groups, charitable gift annuity organizations, service contract providers, Accredited/Trusted Reinsurers, and surplus lines.



Total Licensed Companies and Other Regulated Entities

Licensed Insurance Companies	1,542
Domestic (Arkansas) Insurers.....	53
Foreign Insurers.....	1,489
Accredited/Trusted Reinsurers	30
Automobile/Motor Club Associations	21
Charitable Gift Annuity Organizations	182
Continuing Care Facilities	8
Portable Electronic	9
Portable Electronic Limited	45
Reinsurance Intermediaries Brokers	1
Reinsurance Intermediaries Managers	0
Self Storage Insurance	29
Service Contract Providers	97
Surplus Lines Insurers	213
Domestic (Arkansas).....	2
Foreign.....	143
Alien (non U.S.A.).....	68

AID Examinations

Financial Examinations

Domestic Life Companies.....	6
Domestic Property & Casualty Companies	1
Domestic Health Maintenance Organizations.....	1
Other Domestic Organizations	1

Financial Analysis (Includes Annual and Quarterly Reviews)

Domestic Financial Reviews.....	237
Domestic Supplemental Filings Reviews	214
Holding Company & Other Filings Reviews.....	237

Prepaid Funeral Benefits Contracts

Examinations Conducted	65
Number of Licenses.....	198
Reports Reviewed.....	1,417

Insurance Fraud Investigations

Referrals Received.....	981
Cases Referred for Prosecution	48
Successful Prosecutions.....	33
Fines	\$20,350
Restitution	\$129,060

Legal Proceedings*

Bulletins Issued	22
Directives Issued	0
Orders Issued.....	102
Rules Finalized	7
Investigations Initiated.....	225
Investigations Closed.....	165
Fines and Penalties.....	\$67,565
Recoveries & Restitution for Arkansas Consumers.....	\$136,211
Multi-State Settlements	0
Company Mergers	11
Certificate of Authority Cancellations	9

Liquidations and Rehabilitations*

A. *Liquidations A.C.A. § 23-61-112(2).*

No original actions were filed for liquidation of any domestic Arkansas insurance companies during the reporting year of 2015.

B. *Rehabilitations A.C.A. § 23-61-112(3).*

No original actions were filed for rehabilitation of any domestic Arkansas insurance companies during the reporting year of 2015.

*Department Bulletins, Directives, Public Orders, Rules and Court Orders of Rehabilitation/Liquidation are now available in electronic format at www.insurance.arkansas.gov/legal.htm.

Insurers Listed by Arkansas Premium as of 12/31/2015

Domestic Surplus Lines

NAIC	Company Name	AR Premium	Market Share	Assets	Liabilities	Capital & Surplus
24319	Allied World Surplus Lines Ins Co	\$1,030,549	57.18%	\$267,557,985	\$170,830,615	\$96,727,370
38920	Kinsale Ins Co	\$771,839	42.82%	\$394,585,097	\$266,909,845	\$127,675,252
	TOTAL	\$1,802,388	100.00%			

Farmers Mutual Aid Associations

NAIC	Company Name	AR Premium	Market Share	Assets	Liabilities	Capital & Surplus
14250	Farm & Home Mutual Ins Co	\$4,318,439	36.03%	\$6,404,661	\$3,313,045	\$3,091,616
14244	Farmers Mutual Ins Co Gentry	\$2,838,928	23.69%	\$13,788,043	\$2,843,509	\$10,944,534
14247	Farmers Protective Mutual Ins Co	\$1,711,037	14.28%	\$7,172,325	\$1,247,141	\$5,925,184
14252	Washington County Farmers Mutual Fire	\$1,197,921	9.99%	\$28,634,064	\$859,863	\$27,774,201
14246	Farmers Fire Ins Co	\$977,985	8.16%	\$1,444,799	\$630,567	\$814,232
14245	Farmers Mutual Fire Ins Co- Carroll Cty	\$901,477	7.52%	\$3,045,917	\$644,788	\$2,401,129
14251	Logan County Farmers Mutual Aid	\$39,650	0.33%	\$1,985,662	\$39,651	\$1,946,011
	TOTAL	\$11,985,437	100.00%			

Fraternal Organizations

NAIC	Company Name	AR Premium	Market Share	Assets	Liabilities	Capital & Surplus
57541	Modern Woodmen Of Amer	\$42,753,825	36.22%	\$14,754,514,321	\$13,163,262,800	\$1,591,251,521
56014	Thrivent Financial For Lutherans	\$37,909,606	32.12%	\$80,112,484,699	\$72,985,988,381	\$7,126,496,319
57320	Woodmen World Life Ins Soc	\$22,136,251	18.75%	\$10,676,069,158	\$9,502,779,202	\$1,173,289,956
58033	Knights Of Columbus	\$6,167,400	5.22%	\$22,217,031,608	\$20,377,458,777	\$1,839,572,831
58068	Independent Order Of Foresters Us Br	\$3,518,794	2.98%	\$3,067,173,617	\$2,932,596,897	\$134,576,720
56499	Assured Life Assn	\$1,936,235	1.64%	\$57,886,892	\$45,082,117	\$12,804,775
56383	Order of United Commercial Travelers	\$1,528,728	1.30%	\$18,687,312	\$9,264,194	\$9,423,118
57657	Royal Neighbors Of Amer	\$966,222	0.82%	\$971,981,498	\$769,475,503	\$202,505,995
57630	Polish Roman Catholic Union Of Amer	\$740,095	0.63%	\$214,837,808	\$207,869,284	\$6,968,524
56030	Catholic Financial Life	\$368,362	0.31%	\$1,378,099,759	\$1,320,497,146	\$57,602,613
57223	Baptist Life Assn	\$8,134	0.01%	\$30,704,206	\$29,462,172	\$1,242,034
57088	Degree Of Honor Protective Assn	\$5,830	0.00%	\$208,054,156	\$201,879,808	\$6,174,348
57622	Polish Natl Alliance Us Of Na	\$1,450	0.00%	\$431,839,499	\$414,675,223	\$17,164,276
56227	KSKJ Life Amer Slovenian Catholic Un	\$1,198	0.00%	\$461,372,641	\$446,354,441	\$15,018,200
56170	Womans Life Ins Society	\$376	0.00%	\$199,582,869	\$177,758,460	\$21,824,409
56332	First Cath Slovak Ladies Assn USA	\$-	0.00%	\$815,628,610	\$719,966,222	\$95,662,388
	TOTAL	\$118,042,506	100.00%			

Health Maintenance Organizations and Hospital, Medical, Dental Insurers

NAIC	Company Name	AR Premium	Market Share	Assets	Liabilities	Capital & Surplus
95885	Humana Hlth Plan Inc	\$280,552,604	24.85%	\$1,385,609,992	\$784,302,879	\$601,307,113
95442	Hmo Partners Inc	\$265,379,456	23.50%	\$113,699,696	\$56,968,073	\$56,731,623
95448	QCA Hlth Plan Inc	\$209,733,467	18.57%	\$81,342,072	\$41,791,261	\$39,550,811
47155	Delta Dental Plan of AR Inc	\$121,590,969	10.77%	\$102,130,287	\$31,539,516	\$70,590,771
11229	Harmony Hlth Plan of IL Inc	\$107,083,856	9.48%	\$334,066,961	\$153,134,377	\$180,932,584
70998	Qualchoice Life & Hlth Ins Co Inc	\$65,054,053	5.76%	\$44,731,101	\$23,383,351	\$21,347,750
12231	UnitedHealthcare Ins Co of the River	\$50,610,009	4.48%	\$219,480,340	\$126,412,482	\$93,067,858
95489	Coventry Hlth Care of KS Inc	\$11,983,328	1.06%	\$211,349,305	\$118,227,266	\$93,122,039
95446	United Hlthcare of AR Inc	\$9,657,876	0.86%	\$9,954,086	\$2,809,667	\$7,144,419
11522	Healthspring of TN Inc	\$5,882,851	0.52%	\$345,388,994	\$186,092,092	\$159,296,902
15135	Arkansas Superior Select Inc	\$1,590,764	0.14%	\$3,628,323	\$2,624,651	\$1,003,672
12282	Humana Regional Hlth Plan Inc	\$9,085	0.00%	\$14,914,062	\$2,317,428	\$12,596,634
15751	Qualchoice Advantage Inc	\$-	0.00%	\$3,513,756	\$5,160	\$3,508,596
15127	Vantage Hlth Plan of AR Inc	\$-	0.00%	\$305,605	\$-	\$305,605
TOTAL		\$1,129,128,318	100.00%			

Life and Health

NAIC	Company Name	AR Premium	Market Share	Assets	Liabilities	Capital & Surplus
83470	USAbLe Mut Ins Co	\$2,187,994,415	31.30%	\$1,579,924,692	\$762,122,594	\$817,802,098
12567	Care Improvement Plus S Central Ins	\$371,946,848	5.32%	\$900,901,751	\$585,750,014	\$315,151,737
79413	UnitedHealthcare Ins Co	\$266,131,253	3.81%	\$15,791,222,045	\$10,201,482,818	\$5,589,739,227
73288	Humana Ins Co	\$182,494,546	2.61%	\$6,583,312,265	\$2,941,226,223	\$3,642,086,042
65056	Jackson Natl Life Ins Co	\$178,308,069	2.55%	\$189,096,799,963	\$184,378,348,690	\$4,718,451,273
80799	Celtic Ins Co	\$151,979,693	2.17%	\$139,895,928	\$101,707,136	\$38,188,792
65676	Lincoln Natl Life Ins Co	\$117,073,394	1.67%	\$213,891,333,200	\$206,774,211,431	\$7,117,121,769
60488	American Gen Life Ins Co	\$111,307,154	1.59%	\$166,711,283,112	\$157,817,437,809	\$8,893,845,303
65978	Metropolitan Life Ins Co	\$108,845,071	1.56%	\$390,842,696,349	\$376,357,703,815	\$14,484,992,534
65935	Massachusetts Mut Life Ins Co	\$98,217,740	1.41%	\$210,358,711,235	\$195,376,179,098	\$14,982,532,137
69345	Teachers Ins & Ann Assoc Of Amer	\$95,290,829	1.36%	\$270,094,422,397	\$235,358,924,754	\$34,735,497,643
68241	Prudential Ins Co Of Amer	\$92,854,558	1.33%	\$244,995,696,885	\$233,451,966,948	\$11,543,729,937
65838	John Hancock Life Ins Co USA	\$88,123,069	1.26%	\$227,843,141,661	\$222,399,348,633	\$5,443,793,028
86231	Transamerica Life Ins Co	\$85,794,022	1.23%	\$126,035,998,904	\$120,577,357,203	\$5,458,641,701
91596	New York Life Ins & Ann Corp	\$85,033,475	1.22%	\$132,239,256,444	\$124,093,432,598	\$8,145,823,846
91642	Forethought Life Ins Co	\$79,154,323	1.13%	\$18,822,785,851	\$17,628,662,635	\$1,194,123,216
66869	Nationwide Life Ins Co	\$73,606,754	1.05%	\$126,860,520,130	\$122,293,998,539	\$4,566,521,591
68896	Southern Farm Bureau Life Ins Co	\$73,068,815	1.05%	\$13,307,904,235	\$10,851,059,245	\$2,456,844,990
60380	American Family Life Assur Co of Col	\$70,929,631	1.01%	\$101,566,006,214	\$90,268,151,561	\$11,297,854,653
61271	Principal Life Ins Co	\$69,997,117	1.00%	\$157,774,712,552	\$153,278,058,792	\$4,496,653,760
67091	Northwestern Mut Life Ins Co	\$65,766,047	0.94%	\$238,543,831,635	\$218,884,207,767	\$19,659,623,868
69108	State Farm Life Ins Co	\$65,015,746	0.93%	\$66,498,229,728	\$56,938,309,363	\$9,559,920,365
66044	Midland Natl Life Ins Co	\$62,360,217	0.89%	\$44,729,307,657	\$41,872,315,999	\$2,856,991,658
70238	Variable Ann Life Ins Co	\$59,236,043	0.85%	\$74,140,570,680	\$71,418,004,966	\$2,722,565,714
65005	RiverSource Life Ins Co	\$56,848,957	0.81%	\$100,564,207,588	\$96,914,103,506	\$3,650,104,082
60054	Aetna Life Ins Co	\$54,955,114	0.79%	\$21,214,103,270	\$17,443,344,400	\$3,770,758,871
62235	Unum Life Ins Co Of Amer	\$50,172,400	0.72%	\$20,552,323,486	\$18,985,031,386	\$1,567,292,100
66915	New York Life Ins Co	\$49,630,689	0.71%	\$163,554,359,835	\$144,058,424,720	\$19,495,935,115
68608	Symetra Life Ins Co	\$48,662,562	0.70%	\$31,806,855,857	\$29,725,354,395	\$2,081,501,462
86509	Voya Retirement Ins & Ann Co	\$48,401,329	0.69%	\$87,214,110,805	\$85,183,943,863	\$2,030,166,942
79227	Pruco Life Ins Co	\$48,263,008	0.69%	\$107,815,378,501	\$105,019,792,284	\$2,795,586,217
94358	USAbLe Life	\$46,709,440	0.67%	\$467,909,816	\$252,611,186	\$215,298,630
12575	SilverScript Ins Co	\$46,189,299	0.66%	\$2,385,680,862	\$1,771,965,894	\$613,714,968
69868	United Of Omaha Life Ins Co	\$45,641,503	0.65%	\$19,622,503,033	\$18,180,784,898	\$1,441,718,135

Life and Health (Cont.)

NAIC	Company Name	AR Premium	Market Share	Assets	Liabilities	Capital & Surplus
67369	Cigna Hlth & Life Ins Co	\$43,147,111	0.62%	\$6,559,922,658	\$3,550,991,410	\$3,008,931,248
92738	American Equity Invest Life Ins Co	\$41,477,542	0.59%	\$41,615,583,765	\$39,200,165,120	\$2,415,418,645
62944	AXA Equitable Life Ins Co	\$40,422,472	0.58%	\$164,667,582,557	\$159,245,019,334	\$5,422,563,223
68136	Protective Life Ins Co	\$39,952,987	0.57%	\$41,809,688,019	\$38,027,764,724	\$3,781,923,294
81973	Coventry Hlth & Life Ins Co	\$38,808,849	0.56%	\$1,699,669,908	\$750,322,620	\$949,347,288
90611	Allianz Life Ins Co Of N Amer	\$36,388,556	0.52%	\$120,593,635,946	\$114,771,519,214	\$5,822,116,732
61689	Athene Ann & Life Co	\$34,638,037	0.50%	\$44,053,155,130	\$42,944,223,046	\$1,108,932,084
67466	Pacific Life Ins Co	\$33,017,031	0.47%	\$113,241,838,354	\$105,479,358,853	\$7,762,479,501
66168	Minnesota Life Ins Co	\$31,486,664	0.45%	\$36,910,379,467	\$34,143,974,781	\$2,766,404,686
87726	Metlife Ins Co USA	\$30,568,963	0.44%	\$173,761,513,938	\$167,819,500,221	\$5,942,013,717
70688	Transamerica Financial Life Ins Co	\$27,794,879	0.40%	\$31,535,276,918	\$30,367,891,588	\$1,167,385,330
69019	Standard Ins Co	\$27,708,099	0.40%	\$20,781,587,942	\$19,696,560,022	\$1,085,027,920
70670	Health Care Serv Corp A Mut Legal Re	\$27,539,829	0.39%	\$17,661,069,333	\$8,216,115,730	\$9,444,953,603
67172	Ohio Natl Life Ins Co	\$26,934,664	0.39%	\$27,589,840,350	\$26,502,620,023	\$1,087,220,327
63312	Great Amer Life Ins Co	\$26,239,844	0.38%	\$25,935,988,066	\$24,214,649,342	\$1,721,338,724
68322	Great W Life & Ann Ins Co	\$25,991,457	0.37%	\$54,460,510,086	\$53,345,745,872	\$1,114,764,214
65757	Shelter Life Ins Co	\$25,545,689	0.37%	\$1,157,399,076	\$973,268,232	\$184,130,844
92657	Nationwide Life & Ann Ins Co	\$24,273,961	0.35%	\$10,757,627,012	\$10,022,580,352	\$735,046,660
70815	Hartford Life & Accident Ins Co	\$24,186,710	0.35%	\$8,992,234,726	\$7,340,850,885	\$1,651,383,841
64246	Guardian Life Ins Co Of Amer	\$23,770,984	0.34%	\$48,120,890,404	\$42,031,219,911	\$6,089,670,493
65315	Liberty Life Assur Co Of Boston	\$23,480,397	0.34%	\$16,054,072,955	\$15,087,626,206	\$966,446,749
68675	Security Benefit Life Ins Co	\$22,874,623	0.33%	\$27,787,431,315	\$26,501,061,941	\$1,286,369,374
63274	Fidelity & Guar Life Ins Co	\$20,471,907	0.29%	\$19,810,067,507	\$18,571,109,769	\$1,238,957,738
66974	North Amer Co Life & Hlth Ins	\$20,367,305	0.29%	\$18,900,165,283	\$17,770,865,449	\$1,129,299,833
88072	Hartford Life Ins Co	\$20,185,824	0.29%	\$114,420,864,730	\$109,481,393,583	\$4,939,471,147
64467	Wellcare Hlth Ins of KY Inc	\$20,074,978	0.29%	\$691,837,382	\$390,493,170	\$301,344,212
70025	Genworth Life Ins Co	\$18,488,441	0.26%	\$38,504,308,983	\$35,763,561,505	\$2,740,747,478
60410	American Fidelity Assur Co	\$18,214,690	0.26%	\$5,181,111,476	\$4,772,613,960	\$408,497,516
60534	American Heritage Life Ins Co	\$18,022,833	0.26%	\$1,830,900,453	\$1,501,227,345	\$329,673,108
92711	HCC Life Ins Co	\$17,315,700	0.25%	\$921,472,064	\$368,794,961	\$552,677,103
68381	Reliance Standard Life Ins Co	\$17,230,157	0.25%	\$9,580,836,653	\$8,656,909,525	\$923,927,128
67105	Reliastar Life Ins Co	\$16,489,988	0.24%	\$19,805,140,817	\$18,195,978,907	\$1,609,161,910
66281	Transamerica Premier Life Ins Co	\$16,032,993	0.23%	\$41,649,416,215	\$40,141,438,163	\$1,507,978,052
12902	Healthspring Life & Hlth Ins Co Inc	\$15,633,274	0.22%	\$613,953,794	\$286,576,831	\$327,376,963
60739	American Natl Ins Co	\$15,546,166	0.22%	\$18,342,073,610	\$15,416,139,029	\$2,925,934,581
62286	Golden Rule Ins Co	\$15,146,961	0.22%	\$635,565,515	\$367,539,021	\$268,026,494
61263	Bankers Life & Cas Co	\$14,970,609	0.21%	\$16,905,397,190	\$15,666,754,287	\$1,238,642,903
62049	Colonial Life & Accident Ins Co	\$14,223,789	0.20%	\$3,018,752,743	\$2,452,775,155	\$565,977,588
71420	Sierra Hlth & Life Ins Co Inc	\$14,106,271	0.20%	\$1,676,627,228	\$897,649,603	\$778,977,625
68195	Provident Life & Accident Ins Co	\$14,086,232	0.20%	\$8,325,327,100	\$7,597,784,050	\$727,543,050
62626	CMFG Life Ins Co	\$13,686,133	0.20%	\$15,475,920,046	\$13,617,475,457	\$1,858,444,589
69663	USAA Life Ins Co	\$13,129,218	0.19%	\$22,777,060,690	\$20,520,905,114	\$2,256,155,576
65498	Life Ins Co Of N Amer	\$12,986,493	0.19%	\$8,141,585,713	\$6,646,244,527	\$1,495,341,186
71153	Hartford Life & Ann Ins Co	\$12,594,423	0.18%	\$40,189,140,126	\$37,563,858,451	\$2,625,281,676
65919	Primerica Life Ins Co	\$12,178,777	0.17%	\$1,320,871,479	\$759,935,155	\$560,936,324
93548	PHL Variable Ins Co	\$12,065,999	0.17%	\$6,397,840,212	\$6,203,315,707	\$194,524,505
62510	Equitrust Life Ins Co	\$11,730,735	0.17%	\$15,881,346,105	\$15,062,373,115	\$818,972,990
63177	Farmers New World Life Ins Co	\$11,580,649	0.17%	\$7,048,914,618	\$6,567,429,145	\$481,485,473
91472	Globe Life & Accident Ins Co	\$11,536,982	0.17%	\$3,733,341,893	\$3,489,615,925	\$243,725,968
83836	Selected Funeral & Life Ins Co	\$11,443,784	0.16%	\$171,475,987	\$149,459,677	\$22,016,310
65536	Genworth Life & Ann Ins Co	\$11,434,596	0.16%	\$23,410,503,029	\$21,741,722,855	\$1,668,780,174
80802	US Br Sun Life Assur Co of Canada	\$9,953,087	0.14%	\$18,222,429,571	\$16,296,633,672	\$1,925,795,899
68357	Reliable Life Ins Co	\$9,860,703	0.14%	\$21,558,302	\$9,542,235	\$12,016,067
66583	National Guardian Life Ins Co	\$9,797,479	0.14%	\$3,422,186,461	\$3,151,103,930	\$271,082,531

Life and Health (Cont.)

NAIC	Company Name	AR Premium	Market Share	Assets	Liabilities	Capital & Surplus
89206	Ohio Natl Life Assur Corp	\$9,083,705	0.13%	\$3,688,526,943	\$3,407,019,328	\$281,507,615
84174	ELCO Mut Life & Ann	\$9,038,652	0.13%	\$642,296,156	\$597,304,656	\$44,991,500
65595	Lincoln Benefit Life Co	\$8,692,847	0.12%	\$11,701,128,350	\$11,145,899,807	\$555,228,543
61301	Ameritas Life Ins Corp	\$8,687,781	0.12%	\$18,148,752,064	\$16,637,225,085	\$1,511,526,979
90328	First Hlth Life & Hlth Ins Co	\$8,449,888	0.12%	\$582,863,316	\$291,581,996	\$291,281,320
67644	Penn Mut Life Ins Co	\$8,316,430	0.12%	\$18,235,048,089	\$16,447,356,211	\$1,787,691,878
69477	Time Ins Co	\$8,220,603	0.12%	\$1,157,901,114	\$686,236,841	\$471,664,273
65927	Lincoln Heritage Life Ins Co	\$8,047,930	0.12%	\$873,430,972	\$763,392,567	\$110,038,405
92622	Western Southern Life Assur Co	\$7,772,135	0.11%	\$12,553,375,468	\$11,558,139,391	\$995,236,077
71412	Mutual Of Omaha Ins Co	\$7,695,724	0.11%	\$6,945,097,641	\$4,082,327,309	\$2,862,770,332
92916	United Amer Ins Co	\$7,628,169	0.11%	\$1,559,650,158	\$1,366,991,612	\$192,658,546
80942	Voya Ins & Ann Co	\$7,503,542	0.11%	\$63,981,167,641	\$61,906,394,688	\$2,074,772,953
77968	Family Heritage Life Ins Co Of Amer	\$7,420,242	0.11%	\$921,028,255	\$842,709,863	\$78,318,392
60895	American United Life Ins Co	\$7,278,826	0.10%	\$23,571,670,619	\$22,651,296,355	\$920,374,264
62146	Combined Ins Co Of Amer	\$6,731,008	0.10%	\$1,316,656,889	\$1,236,756,324	\$79,900,565
12321	American Continental Ins Co	\$6,437,999	0.09%	\$203,099,570	\$123,378,476	\$79,721,094
65528	Life Ins Co Of The Southwest	\$6,360,862	0.09%	\$14,680,991,911	\$13,840,102,882	\$840,889,029
66850	National Western Life Ins Co	\$6,257,402	0.09%	\$10,544,641,289	\$9,373,438,207	\$1,171,203,082
94250	Banner Life Ins Co	\$6,090,645	0.09%	\$2,213,711,880	\$1,876,488,900	\$337,222,980
61999	Americo Fin Life & Ann Ins Co	\$5,864,902	0.08%	\$4,117,883,103	\$3,685,491,030	\$432,392,073
67814	Phoenix Life Ins Co	\$5,669,708	0.08%	\$12,716,819,422	\$12,334,771,697	\$382,047,725
65331	Liberty Natl Life Ins Co	\$5,660,776	0.08%	\$7,559,635,134	\$7,033,852,586	\$525,782,548
67326	Old Surety Life Ins Co	\$5,630,661	0.08%	\$25,996,759	\$15,338,208	\$10,658,551
70939	Gerber Life Ins Co	\$5,603,070	0.08%	\$3,088,339,784	\$2,792,543,717	\$295,796,067
61492	Athene Annuity & Life Assur Co	\$5,602,121	0.08%	\$10,847,846,822	\$9,597,077,693	\$1,250,769,129
63762	Medco Containment Life Ins Co	\$5,549,419	0.08%	\$910,670,995	\$624,373,589	\$286,297,406
83968	Citizens Fidelity Ins Co	\$5,437,437	0.08%	\$68,035,658	\$56,648,898	\$11,386,760
67989	American Memorial Life Ins Co	\$5,172,942	0.07%	\$2,761,648,470	\$2,645,980,614	\$115,667,856
62065	Colonial Penn Life Ins Co	\$5,103,006	0.07%	\$816,029,943	\$736,769,804	\$79,260,139
65129	Kansas City Life Ins Co	\$4,961,331	0.07%	\$3,324,316,468	\$3,026,704,437	\$297,612,031
93696	Fidelity Investments Life Ins Co	\$4,934,318	0.07%	\$24,854,281,469	\$24,103,389,928	\$750,891,541
72850	United World Life Ins Co	\$4,833,541	0.07%	\$123,737,737	\$74,809,103	\$48,928,635
71730	Continental Amer Ins Co	\$4,803,664	0.07%	\$512,325,330	\$374,365,491	\$137,959,839
73881	American Life & Annuity Co	\$4,781,082	0.07%	\$50,622,798	\$46,113,949	\$4,508,849
70319	Washington Natl Ins Co	\$4,732,693	0.07%	\$4,807,834,774	\$4,474,783,748	\$333,051,026
76112	Oxford Life Ins Co	\$4,696,553	0.07%	\$1,490,445,378	\$1,318,163,873	\$172,281,506
60577	American Income Life Ins Co	\$4,693,736	0.07%	\$3,078,080,478	\$2,835,559,441	\$242,521,037
88668	Mutual Of Amer Life Ins Co	\$4,388,898	0.06%	\$17,865,444,988	\$16,833,256,869	\$1,032,188,119
70408	Union Security Ins Co	\$4,278,101	0.06%	\$4,711,770,896	\$4,283,404,875	\$428,366,021
61921	Citizens Security Life Ins Co	\$4,101,727	0.06%	\$22,846,785	\$8,970,495	\$13,876,290
61425	Trustmark Ins Co	\$3,997,921	0.06%	\$1,406,836,579	\$1,120,138,893	\$286,697,686
84034	First Guar Ins Co	\$3,905,933	0.06%	\$55,549,767	\$51,701,119	\$3,848,648
70335	West Coast Life Ins Co	\$3,820,834	0.05%	\$4,985,334,018	\$4,565,905,787	\$419,428,231
65722	Loyal Amer Life Ins Co	\$3,820,114	0.05%	\$266,704,142	\$181,076,598	\$85,627,544
61883	Central United Life Ins Co	\$3,774,677	0.05%	\$327,036,279	\$234,162,125	\$92,874,154
79065	Delaware Life Ins Co	\$3,760,554	0.05%	\$36,876,925,494	\$35,241,033,704	\$1,635,891,790
62324	Freedom Life Ins Co Of Amer	\$3,739,796	0.05%	\$77,292,287	\$40,268,511	\$37,023,776
60076	Security Plan Life Ins Co	\$3,724,950	0.05%	\$322,115,478	\$275,116,045	\$46,999,433
83607	Guggenheim Life & Ann Co	\$3,721,934	0.05%	\$13,397,732,197	\$12,735,065,857	\$662,666,340
68543	Liberty Bankers Life Ins Co	\$3,706,273	0.05%	\$1,356,064,181	\$1,158,162,586	\$197,901,595
65242	Lafayette Life Ins Co	\$3,691,447	0.05%	\$4,548,053,001	\$4,286,626,351	\$261,426,650
60445	Sagacor Life Ins Co	\$3,565,120	0.05%	\$1,193,810,515	\$1,111,679,226	\$82,131,289
60142	TIAA Cref Life Ins Co	\$3,549,903	0.05%	\$10,774,241,180	\$10,411,722,937	\$362,518,243
69000	Northwestern Long Term Care Ins Co	\$3,538,587	0.05%	\$165,970,786	\$86,472,316	\$79,498,470

Life and Health (Cont.)

NAIC	Company Name	AR Premium	Market Share	Assets	Liabilities	Capital & Surplus
77879	5 Star Life Ins Co	\$3,507,565	0.05%	\$273,647,298	\$235,102,919	\$38,544,379
68462	Reserve Natl Ins Co	\$3,495,261	0.05%	\$122,807,996	\$77,669,857	\$45,138,139
68810	Sentry Life Ins Co	\$3,489,710	0.05%	\$5,560,232,504	\$5,291,418,368	\$268,814,136
60186	Allstate Life Ins Co	\$3,413,432	0.05%	\$32,348,141,922	\$29,479,432,643	\$2,868,709,279
60984	Compbenefits Ins Co	\$3,252,418	0.05%	\$42,252,244	\$11,736,329	\$30,515,915
61476	Boston Mut Life Ins Co	\$3,133,923	0.04%	\$1,297,089,383	\$1,137,998,255	\$159,091,128
78778	Guardian Ins & Ann Co Inc	\$2,987,282	0.04%	\$15,883,417,869	\$15,623,655,783	\$259,762,086
31119	Medico Ins Co	\$2,954,984	0.04%	\$74,306,668	\$42,398,869	\$31,907,799
64211	Guarantee Trust Life Ins Co	\$2,950,047	0.04%	\$495,847,863	\$425,843,545	\$70,004,318
66427	Mutual Trust Life Ins Co a Pan Amer	\$2,911,692	0.04%	\$1,931,149,702	\$1,793,179,397	\$137,970,305
76236	Cincinnati Life Ins Co	\$2,873,306	0.04%	\$4,066,836,927	\$3,858,482,201	\$208,354,726
97179	UnitedHealthcare Life Ins Co	\$2,833,598	0.04%	\$488,431,489	\$351,364,045	\$137,067,444
68713	Security Life Of Denver Ins Co	\$2,824,285	0.04%	\$13,249,051,525	\$12,390,800,109	\$858,251,416
63479	United Teacher Assoc Ins Co	\$2,798,445	0.04%	\$1,044,608,165	\$983,631,753	\$60,976,412
64017	Jefferson Natl Life Ins Co	\$2,773,877	0.04%	\$4,057,984,156	\$4,019,662,564	\$38,321,592
80578	Physicians Mut Ins Co	\$2,713,340	0.04%	\$2,106,179,396	\$1,220,656,067	\$885,523,329
87963	National Teachers Assoc Life Ins Co	\$2,694,977	0.04%	\$464,131,715	\$372,048,260	\$92,083,455
70106	United States Life Ins Co in the Cit	\$2,664,159	0.04%	\$28,404,015,101	\$26,313,596,142	\$2,090,418,959
62952	Equitable Life & Cas Ins Co	\$2,658,616	0.04%	\$306,439,164	\$260,208,568	\$46,230,596
72125	Physicians Life Ins Co	\$2,610,199	0.04%	\$1,490,669,926	\$1,352,772,812	\$137,897,114
74780	Integrity Life Ins Co	\$2,578,044	0.04%	\$6,844,346,105	\$6,165,783,685	\$678,562,420
63258	Federated Life Ins Co	\$2,550,934	0.04%	\$1,648,910,796	\$1,313,387,884	\$335,522,912
69396	Texas Life Ins Co	\$2,513,147	0.04%	\$1,076,305,439	\$977,921,873	\$98,383,566
71161	Principal Natl Life Ins Co	\$2,346,203	0.03%	\$185,055,250	\$81,387,119	\$103,668,131
83860	American Home Life Ins Co	\$2,344,148	0.03%	\$19,807,920	\$19,361,881	\$446,039
71714	Berkshire Life Ins Co of Amer	\$2,270,075	0.03%	\$3,381,375,249	\$3,173,432,760	\$207,942,489
93262	Penn Ins & Ann Co	\$2,243,737	0.03%	\$3,780,494,579	\$3,417,431,829	\$363,062,750
67199	Old Amer Ins Co	\$2,232,953	0.03%	\$252,166,160	\$229,180,722	\$22,985,438
91529	Unimerica Ins Co	\$2,218,284	0.03%	\$435,884,737	\$268,179,385	\$167,705,352
67784	Philadelphia Amer Life Ins Co	\$2,188,507	0.03%	\$235,193,386	\$201,264,846	\$33,928,540
62928	EMC Natl Life Co	\$2,173,445	0.03%	\$978,865,110	\$879,395,512	\$99,469,597
64513	Horace Mann Life Ins Co	\$2,085,747	0.03%	\$8,358,804,022	\$7,936,910,029	\$421,893,992
71870	Fidelity Security Life Ins Co	\$2,055,761	0.03%	\$864,224,832	\$695,224,507	\$169,000,325
65900	Wilco Life Ins Co	\$2,022,741	0.03%	\$3,485,609,715	\$3,284,984,595	\$200,625,120
71854	AAA Life Ins Co	\$1,981,505	0.03%	\$614,934,965	\$477,913,390	\$137,021,575
63665	General Amer Life Ins Co	\$1,980,278	0.03%	\$12,305,325,835	\$11,321,839,154	\$983,486,681
93629	Prudential Retirement Ins & Ann Co	\$1,872,545	0.03%	\$75,576,911,092	\$74,496,555,973	\$1,080,355,119
62200	Accordia Life & Ann Co	\$1,822,967	0.03%	\$7,674,856,180	\$7,062,893,351	\$611,962,829
65110	Kanawha Ins Co	\$1,725,984	0.02%	\$1,518,864,178	\$1,385,654,669	\$133,209,509
98205	Natl Foundation Life Ins Co	\$1,694,948	0.02%	\$29,909,377	\$13,429,318	\$16,480,059
69116	State Life Ins Co	\$1,683,203	0.02%	\$6,119,327,641	\$5,692,460,562	\$426,867,079
61212	Baltimore Life Ins Co	\$1,671,227	0.02%	\$1,192,025,305	\$1,112,684,298	\$79,341,007
69485	Security Natl Life Ins Co	\$1,646,804	0.02%	\$544,053,706	\$511,282,640	\$32,771,066
67598	Paul Revere Life Ins Co	\$1,633,036	0.02%	\$3,977,022,535	\$3,719,310,842	\$257,711,693
78077	Mony Life Ins Co Of Amer	\$1,617,185	0.02%	\$2,912,765,211	\$2,559,928,570	\$352,836,641
92703	United Natl Life Ins Co Of Amer	\$1,613,008	0.02%	\$19,754,215	\$15,368,447	\$4,385,768
62308	Connecticut Gen Life Ins Co	\$1,611,802	0.02%	\$17,374,406,352	\$13,743,379,666	\$3,631,026,686
93742	Securian Life Ins Co	\$1,558,898	0.02%	\$438,609,821	\$233,165,190	\$205,444,631
66214	Heartland Natl Life Ins Co	\$1,486,847	0.02%	\$10,859,158	\$5,295,916	\$5,563,242
63983	United Heritage Life Ins Co	\$1,485,955	0.02%	\$541,645,921	\$482,323,584	\$59,322,337
64890	Berkley Life & Hlth Ins Co	\$1,473,693	0.02%	\$223,850,525	\$94,678,001	\$129,172,524
63053	Family Life Ins Co	\$1,446,343	0.02%	\$158,681,304	\$122,853,725	\$35,827,579
93440	HM Life Ins Co	\$1,417,130	0.02%	\$620,825,360	\$272,234,797	\$348,590,563
12747	Envision Ins Co	\$1,387,750	0.02%	\$332,771,468	\$281,649,433	\$51,122,035

Life and Health (Cont.)

NAIC	Company Name	AR Premium	Market Share	Assets	Liabilities	Capital & Surplus
64505	Homesteaders Life Co	\$1,349,233	0.02%	\$2,623,884,501	\$2,455,209,077	\$168,675,424
68985	Starmount Life Ins Co	\$1,310,718	0.02%	\$65,949,730	\$37,666,946	\$28,282,784
63290	Fidelity Life Assn A Legal Reserve L	\$1,301,081	0.02%	\$421,196,671	\$286,607,478	\$134,589,193
62359	Constitution Life Ins Co	\$1,293,720	0.02%	\$394,794,595	\$328,235,185	\$66,559,410
80926	Sun Life & Hlth Ins Co	\$1,286,772	0.02%	\$447,681,461	\$206,228,501	\$241,452,960
84530	US Financial Life Ins Co	\$1,282,463	0.02%	\$597,309,975	\$503,640,160	\$93,669,815
62863	Trustmark Life Ins Co	\$1,267,465	0.02%	\$321,330,013	\$161,542,681	\$159,787,332
63967	Government Personnel Mut Life Ins Co	\$1,257,873	0.02%	\$836,118,071	\$719,940,136	\$116,177,935
71439	Assurity Life Ins Co	\$1,250,091	0.02%	\$2,472,008,502	\$2,153,926,757	\$318,081,745
88366	American Retirement Life Ins Co	\$1,201,208	0.02%	\$77,437,356	\$30,133,573	\$47,303,783
61190	Auto Owners Life Ins Co	\$1,172,875	0.02%	\$3,739,348,859	\$3,347,407,101	\$391,941,758
97136	Metropolitan Tower Life Ins Co	\$1,169,353	0.02%	\$4,665,594,898	\$3,955,822,583	\$709,772,315
66370	Mony Life Ins Co	\$1,147,671	0.02%	\$7,482,671,617	\$7,026,819,782	\$455,851,835
65412	Life Ins Co Of AL	\$1,137,672	0.02%	\$116,623,020	\$77,882,977	\$38,740,042
83992	Foundation Life Ins Co Of AR	\$1,128,843	0.02%	\$5,095,751	\$3,852,559	\$1,243,192
91626	New England Life Ins Co	\$1,124,468	0.02%	\$10,172,840,824	\$9,540,924,675	\$631,916,149
86118	Arkansas Bankers Life Ins Co	\$1,070,334	0.02%	\$3,143,309	\$1,432,354	\$1,710,955
60801	American Public Life Ins Co	\$1,066,889	0.02%	\$86,727,860	\$63,135,553	\$23,592,307
69930	United Ins Co Of Amer	\$1,058,512	0.02%	\$3,675,771,181	\$3,270,339,149	\$405,432,032
90557	Zurich Amer Life Ins Co	\$1,036,611	0.01%	\$12,270,834,832	\$12,145,247,955	\$125,586,877
61832	Chesapeake Life Ins Co	\$1,006,388	0.01%	\$99,836,822	\$53,072,197	\$46,764,625
65870	Manhattan Life Ins Co	\$991,597	0.01%	\$484,593,805	\$437,455,549	\$47,138,256
86126	Members Life Ins Co	\$980,015	0.01%	\$37,424,626	\$16,313,258	\$21,111,368
80314	Unicare Life & Hlth Ins Co	\$956,497	0.01%	\$373,838,168	\$265,487,218	\$108,350,950
73474	Dentegra Ins Co	\$952,375	0.01%	\$76,104,680	\$34,746,320	\$41,358,360
70742	Family Benefit Life Ins Co	\$942,189	0.01%	\$98,661,675	\$88,352,712	\$10,308,963
68284	Pyramid Life Ins Co	\$940,145	0.01%	\$71,688,863	\$55,528,113	\$16,160,750
60542	American Home Life Ins Co	\$940,092	0.01%	\$246,462,907	\$225,384,625	\$21,078,281
77828	Companion Life Ins Co	\$911,725	0.01%	\$300,413,732	\$139,987,182	\$160,426,550
86355	Standard Life & Accident Ins Co	\$909,027	0.01%	\$514,484,951	\$236,426,816	\$278,058,135
68845	Shenandoah Life Ins Co	\$905,585	0.01%	\$1,131,843,341	\$1,043,967,035	\$87,876,306
76023	Columbian Life Ins Co	\$880,109	0.01%	\$306,814,754	\$276,032,299	\$30,782,455
65080	John Alden Life Ins Co	\$876,288	0.01%	\$283,958,919	\$254,121,737	\$29,837,182
70548	Wichita Natl Life Ins Co	\$870,612	0.01%	\$17,359,722	\$9,191,269	\$8,168,453
77399	Sterling Life Ins Co	\$851,523	0.01%	\$53,000,431	\$27,213,750	\$25,786,681
61751	Central States H & L Co Of Omaha	\$849,119	0.01%	\$419,912,855	\$297,052,221	\$122,860,634
67652	First Penn Pacific Life Ins Co	\$846,660	0.01%	\$1,609,339,363	\$1,408,028,409	\$201,310,954
67393	Ozark Natl Life Ins Co	\$837,958	0.01%	\$775,248,491	\$644,614,591	\$130,633,900
84115	Jackson Griffin Ins Co	\$821,394	0.01%	\$11,434,131	\$11,121,786	\$312,345
11121	Unified Life Ins Co	\$759,568	0.01%	\$184,083,536	\$162,332,176	\$21,751,360
71390	Puritan Life Ins Co of Amer	\$731,056	0.01%	\$37,584,603	\$30,807,662	\$6,776,941
69078	Standard Security Life Ins Co Of NY	\$708,881	0.01%	\$269,915,086	\$144,845,166	\$125,069,920
99937	Columbus Life Ins Co	\$698,288	0.01%	\$3,474,716,070	\$3,202,016,373	\$272,699,697
74799	Leaders Life Ins Co	\$696,351	0.01%	\$6,115,876	\$3,030,898	\$3,084,978
69744	Union Labor Life Ins Co	\$695,558	0.01%	\$3,238,783,244	\$3,159,201,973	\$79,581,271
65781	Madison Natl Life Ins Co Inc	\$677,215	0.01%	\$256,860,233	\$140,207,837	\$116,652,396
67180	Ohio State Life Ins Co	\$661,812	0.01%	\$14,089,227	\$3,472,453	\$10,616,774
61360	Reliastar Life Ins Co Of NY	\$632,965	0.01%	\$3,053,708,425	\$2,738,838,597	\$314,869,828
85928	Family Liberty Life Ins Co	\$632,076	0.01%	\$32,211,817	\$23,519,365	\$8,692,452
97705	Direct Gen Life Ins Co	\$626,903	0.01%	\$26,807,571	\$11,794,157	\$15,013,414
70435	The Savings Bank Life Ins Co Of MA	\$623,182	0.01%	\$2,919,104,804	\$2,695,146,986	\$223,957,818
84786	Colorado Bankers Life Ins Co	\$618,741	0.01%	\$324,421,807	\$268,979,204	\$55,442,603
13183	Eagle Life Ins Co	\$603,733	0.01%	\$313,936,840	\$251,071,038	\$62,865,802
81043	Bankers Life Ins Co	\$596,461	0.01%	\$418,790,016	\$396,239,549	\$22,550,467

Life and Health (Cont.)

NAIC	Company Name	AR Premium	Market Share	Assets	Liabilities	Capital & Surplus
82252	Landmark Life Ins Co	\$590,607	0.01%	\$45,236,244	\$40,500,936	\$4,735,308
83798	Memorial Ins Co Of Amer	\$573,310	0.01%	\$1,154,444	\$72,385	\$1,082,059
84549	Symphonix Hlth Ins Inc	\$572,926	0.01%	\$228,325,857	\$205,697,455	\$22,628,402
76325	Senior Hlth Ins Co of PA	\$565,750	0.01%	\$2,879,794,715	\$2,824,037,145	\$55,757,570
71471	Ability Ins Co	\$557,288	0.01%	\$1,198,116,967	\$1,171,552,481	\$26,564,486
62057	Lincoln Life & Ann Co of NY	\$546,791	0.01%	\$13,176,598,835	\$12,664,367,274	\$512,231,561
77720	LifeSecure Ins Co	\$526,744	0.01%	\$262,252,225	\$244,274,887	\$17,977,338
67539	Pan Amer Life Ins Co	\$524,537	0.01%	\$1,293,710,487	\$1,048,785,090	\$244,925,396
81779	Individual Assur Co Life Hlth & Acc	\$524,332	0.01%	\$20,530,441	\$12,221,630	\$8,308,811
90212	Great Southern Life Ins Co	\$523,503	0.01%	\$220,063,314	\$174,811,080	\$45,252,234
67660	Pennsylvania Life Ins Co	\$518,319	0.01%	\$81,095,461	\$53,035,554	\$28,059,907
68594	American Amicable Life Ins Co Of TX	\$489,164	0.01%	\$286,984,023	\$208,572,215	\$78,411,808
60518	American Hlth & Life Ins Co	\$487,037	0.01%	\$923,889,326	\$740,364,799	\$183,524,527
93432	CM Life Ins Co	\$477,915	0.01%	\$8,803,148,061	\$7,407,156,165	\$1,395,991,896
61239	Bankers Fidelity Life Ins Co	\$451,930	0.01%	\$143,872,919	\$108,551,211	\$35,321,708
69515	Medamerica Ins Co	\$428,195	0.01%	\$890,855,537	\$856,493,790	\$34,361,747
64580	Illinois Mut Life Ins Co	\$426,077	0.01%	\$1,388,934,930	\$1,177,279,654	\$211,655,276
62553	Country Life Ins Co	\$424,351	0.01%	\$10,092,983,912	\$8,957,034,768	\$1,135,949,145
89184	Sterling Investors Life Ins Co	\$413,982	0.01%	\$17,216,826	\$8,716,139	\$8,500,687
64238	Guaranty Income Life Ins Co	\$411,792	0.01%	\$483,375,601	\$443,688,842	\$39,686,759
66680	National Life Ins Co	\$405,836	0.01%	\$9,148,728,181	\$7,370,721,277	\$1,778,006,904
86630	Prudential Ann Life Assur Corp	\$404,959	0.01%	\$42,821,377,989	\$42,339,271,192	\$482,106,797
61700	Renaissance Life & Hlth Ins Co of Am	\$397,726	0.01%	\$78,990,066	\$17,630,981	\$61,359,085
69922	United Home Life Ins Co	\$391,576	0.01%	\$83,403,716	\$63,904,646	\$19,499,070
84069	Smith Burial & Life Ins Co	\$389,663	0.01%	\$4,657,001	\$4,216,030	\$440,971
60399	American Family Life Ins Co	\$380,502	0.01%	\$5,331,745,950	\$4,386,635,553	\$945,110,397
68802	Sentinel Security Life Ins Co	\$379,835	0.01%	\$499,209,396	\$460,514,448	\$38,694,948
60836	American Republic Ins Co	\$376,019	0.01%	\$820,044,795	\$342,152,753	\$477,892,042
83933	Cooperative Life Ins Co	\$363,954	0.01%	\$6,678,590	\$4,099,999	\$2,578,591
71404	Continental Gen Ins Co	\$355,674	0.01%	\$249,339,385	\$230,839,791	\$18,499,594
68500	Continental Life Ins Co Brentwood	\$353,444	0.01%	\$274,039,152	\$129,782,419	\$144,256,733
80659	US Business of Canada Life Assur Co	\$332,732	0.00%	\$4,403,743,639	\$4,272,122,485	\$131,621,154
63657	Garden State Life Ins Co	\$329,411	0.00%	\$127,202,035	\$65,136,146	\$62,065,889
60275	American Bankers Life Assur Co Of FL	\$322,975	0.00%	\$406,179,819	\$349,514,076	\$56,665,743
69132	State Mut Ins Co	\$321,473	0.00%	\$286,707,380	\$252,971,196	\$33,736,184
82538	National Hlth Ins Co	\$320,388	0.00%	\$25,950,466	\$12,154,302	\$13,796,164
79022	Transamerica Advisors Life Ins Co	\$317,047	0.00%	\$8,752,551,032	\$7,962,298,625	\$790,252,407
81353	NYLife Ins Co Of AZ	\$307,724	0.00%	\$200,467,143	\$109,290,756	\$91,176,387
93661	Annuity Investors Life Ins Co	\$304,592	0.00%	\$3,014,112,839	\$2,768,545,433	\$245,567,406
63487	Investors Life Ins Co N Amer	\$303,471	0.00%	\$648,195,856	\$594,030,260	\$54,165,596
78662	Senior Life Ins Co	\$292,472	0.00%	\$51,340,100	\$39,310,923	\$12,029,177
62413	Wilcac Life Ins Co	\$287,802	0.00%	\$2,479,949,494	\$2,340,569,069	\$139,380,425
97721	Thrivent Life Ins Co	\$285,561	0.00%	\$3,519,375,777	\$3,369,903,777	\$149,472,000
68721	Security Life Ins Co Of Amer	\$284,929	0.00%	\$69,742,571	\$49,048,002	\$20,694,568
67873	Pioneer Amer Ins Co	\$274,401	0.00%	\$62,210,051	\$41,632,378	\$20,577,673
61409	National Benefit Life Ins Co	\$252,579	0.00%	\$493,782,589	\$324,048,891	\$169,733,698
67261	Old Republic Life Ins Co	\$247,636	0.00%	\$126,908,872	\$99,898,797	\$27,010,075
93777	Pavonia Life Ins Co of MI	\$246,064	0.00%	\$1,106,807,107	\$1,015,365,285	\$91,441,823
65811	American Modern Life Ins Co	\$238,800	0.00%	\$46,904,726	\$17,866,863	\$29,037,863
69310	Surety Life Ins Co	\$236,040	0.00%	\$23,247,500	\$1,460,980	\$21,786,520
80985	4 Ever Life Ins Co	\$231,756	0.00%	\$199,965,585	\$106,912,793	\$93,052,792
66001	American Benefit Life Ins Co	\$231,170	0.00%	\$110,809,279	\$95,685,556	\$15,123,723
90247	Pharmacists Life Ins Co	\$224,717	0.00%	\$96,546,377	\$89,397,094	\$7,149,283
62596	Union Fidelity Life Ins Co	\$224,452	0.00%	\$19,364,967,023	\$18,936,694,552	\$428,272,471

Life and Health (Cont.)

NAIC	Company Name	AR Premium	Market Share	Assets	Liabilities	Capital & Surplus
63819	Unity Financial Life Ins Co	\$215,942	0.00%	\$207,938,142	\$195,550,500	\$12,387,642
64327	Harleysville Life Ins Co	\$208,562	0.00%	\$410,403,669	\$369,662,834	\$40,740,835
13100	Omaha Ins Co	\$201,436	0.00%	\$88,216,808	\$34,110,509	\$54,106,298
71129	Dearborn Natl Life Ins Co	\$196,271	0.00%	\$1,990,523,696	\$1,468,454,799	\$522,068,897
80020	Mountain Life Ins Co	\$195,401	0.00%	\$11,666,343	\$6,344,866	\$5,321,477
60025	Express Scripts Ins Co	\$195,014	0.00%	\$480,870,324	\$363,655,591	\$117,214,733
88820	American Integrity Life Ins Co	\$192,175	0.00%	\$891,296	\$101,869	\$789,427
67083	Manhattan Natl Life Ins Co	\$187,053	0.00%	\$170,006,791	\$158,032,628	\$11,974,163
67148	Occidental Life Ins Co Of NC	\$185,714	0.00%	\$256,704,314	\$224,981,050	\$31,723,264
61735	Central Security Life Ins Co	\$177,292	0.00%	\$95,024,669	\$90,445,089	\$4,579,579
61875	Church Life Ins Corp	\$171,248	0.00%	\$291,665,981	\$238,340,187	\$53,325,794
69973	United Life Ins Co	\$169,816	0.00%	\$1,535,949,770	\$1,397,095,208	\$138,854,562
74918	Kilpatrick Life Ins Co	\$169,473	0.00%	\$186,691,079	\$179,075,222	\$7,615,857
71773	American Natl Life Ins Co Of TX	\$167,057	0.00%	\$127,522,951	\$91,596,459	\$35,926,492
74365	Southern Pioneer Life Ins Co	\$165,480	0.00%	\$15,861,384	\$3,584,657	\$12,276,726
68047	Professional Ins Co	\$164,299	0.00%	\$109,248,069	\$70,656,464	\$38,591,605
61859	Christian Fidelity Life Ins Co	\$150,169	0.00%	\$68,774,069	\$39,882,258	\$28,891,811
70483	Western & Southern Life Ins Co	\$146,598	0.00%	\$9,792,314,203	\$5,243,979,505	\$4,548,334,698
73660	Directors Life Assur Co	\$144,667	0.00%	\$31,027,854	\$29,226,897	\$1,800,957
61182	Aurora Natl Life Assur Co	\$144,514	0.00%	\$2,953,340,352	\$2,650,164,122	\$303,176,230
84824	Commonwealth Ann & Life Ins Co	\$139,817	0.00%	\$12,287,214,862	\$10,117,398,221	\$2,169,816,641
99775	Funeral Directors Life Ins Co	\$139,240	0.00%	\$1,159,081,047	\$1,059,977,809	\$99,103,238
67946	Pioneer Security Life Ins Co	\$133,789	0.00%	\$125,476,575	\$24,032,325	\$101,444,250
87645	United Fidelity Life Ins Co	\$131,670	0.00%	\$755,263,865	\$304,630,326	\$450,633,539
70866	Allstate Assur Co	\$130,345	0.00%	\$634,281,435	\$529,087,154	\$105,194,281
84018	Fidelity Standard Life Ins Co	\$128,316	0.00%	\$3,132,844	\$2,714,689	\$418,155
70130	Universal Guar Life Ins Co	\$128,181	0.00%	\$334,821,774	\$295,069,342	\$39,752,432
72222	Amica Life Ins Co	\$99,251	0.00%	\$1,224,718,388	\$937,191,312	\$287,527,076
93459	Pan Amer Assur Co	\$85,567	0.00%	\$26,576,036	\$8,877,392	\$17,698,644
67628	Pekin Life Ins Co	\$82,755	0.00%	\$1,393,599,440	\$1,273,442,330	\$120,157,110
70416	MML Bay State Life Ins Co	\$78,604	0.00%	\$4,700,075,825	\$4,468,774,820	\$231,301,005
68772	Security Mut Life Ins Co Of NY	\$69,125	0.00%	\$2,667,789,427	\$2,531,284,619	\$136,504,808
94218	Country Investors Life Assur Co	\$68,492	0.00%	\$292,908,291	\$108,672,076	\$184,236,215
70173	Universal Underwriters Life Ins Co	\$66,663	0.00%	\$160,634,996	\$136,002,310	\$24,632,686
93610	John Hancock Life & Hlth Ins Co	\$65,867	0.00%	\$11,150,505,463	\$10,445,877,320	\$704,628,143
68632	Vantis Life Ins Co	\$65,519	0.00%	\$251,551,771	\$164,232,231	\$87,319,540
71323	Zale Life Ins Co	\$63,454	0.00%	\$11,812,920	\$2,399,911	\$9,413,009
93734	Phoenix Life & Ann Co	\$61,776	0.00%	\$42,643,455	\$21,025,984	\$21,617,471
69272	Sunset Life Ins Co Of Amer	\$61,353	0.00%	\$338,712,506	\$309,328,515	\$29,383,991
90638	Best Life & Hlth Ins Co	\$61,208	0.00%	\$18,543,946	\$4,938,803	\$13,605,143
80705	US Br Great West Life Assur Co	\$60,478	0.00%	\$77,310,844	\$57,399,092	\$19,911,752
97241	Settlers Life Ins Co	\$55,329	0.00%	\$387,993,138	\$348,526,560	\$39,466,578
63495	Foresters Life Ins Ann Co	\$54,524	0.00%	\$1,932,933,833	\$1,872,616,060	\$60,317,773
61727	Central Reserve Life Ins Co	\$54,470	0.00%	\$28,288,754	\$1,855,186	\$26,433,568
71463	CICA Life Ins Co of Amer	\$53,917	0.00%	\$840,799,480	\$805,713,187	\$35,086,293
62880	AXA Equitable Life & Ann Co	\$50,008	0.00%	\$470,828,490	\$448,656,571	\$22,171,919
69566	Trans World Assur Co	\$47,776	0.00%	\$350,835,460	\$267,820,910	\$83,014,550
66540	National Farmers Union Life Ins Co	\$47,411	0.00%	\$206,711,343	\$163,336,286	\$43,375,057
61018	Magna Ins Co	\$46,018	0.00%	\$2,976,676	\$392,227	\$2,584,449
64904	Investors Heritage Life Ins Co	\$45,567	0.00%	\$485,688,839	\$464,486,404	\$21,202,435
79057	Southland Natl Ins Corp	\$44,174	0.00%	\$307,359,259	\$273,376,333	\$33,982,926
88536	Protective Life & Annuity Ins Co	\$43,254	0.00%	\$2,007,627,437	\$1,834,071,976	\$173,555,461
67911	Pioneer Mut Life Ins Co	\$41,743	0.00%	\$516,926,292	\$469,474,626	\$47,451,666
68039	Athene Ann & Life Assur Co of NY	\$39,062	0.00%	\$3,236,759,156	\$3,028,832,409	\$207,926,747

Life and Health (Cont.)

NAIC	Company Name	AR Premium	Market Share	Assets	Liabilities	Capital & Surplus
60704	Wilton Reassur Life Co of NY	\$37,149	0.00%	\$902,186,229	\$811,415,422	\$90,770,807
61395	Beneficial Life Ins Co	\$34,709	0.00%	\$2,795,995,705	\$2,210,877,057	\$585,118,648
66265	Monarch Life Ins Co	\$33,422	0.00%	\$692,954,538	\$689,370,328	\$3,584,210
86959	National Family Care Life Ins Co	\$30,451	0.00%	\$16,271,888	\$6,969,040	\$9,302,848
99724	LifeShield Natl Ins Co	\$30,189	0.00%	\$69,413,673	\$45,609,134	\$23,804,539
70580	Humanadental Ins Co	\$30,169	0.00%	\$136,395,920	\$51,748,795	\$84,647,125
80896	Centre Life Ins Co	\$28,562	0.00%	\$1,884,084,296	\$1,789,607,256	\$94,477,039
67601	Unum Ins Co	\$26,689	0.00%	\$56,997,837	\$13,306,794	\$43,691,042
68209	Provident Life & Cas Ins Co	\$23,990	0.00%	\$755,838,141	\$608,632,412	\$147,205,729
61069	Anthem Life Ins Co	\$23,323	0.00%	\$633,655,088	\$537,726,295	\$95,928,793
60429	American Fidelity Life Ins Co	\$22,932	0.00%	\$426,408,616	\$358,665,505	\$67,743,111
83984	New Found Life Ins Co	\$21,834	0.00%	\$2,046,239	\$372,648	\$1,673,591
42129	United Security Assur Co Of PA	\$19,311	0.00%	\$155,007,280	\$151,777,701	\$3,229,579
62103	Columbian Mut Life Ins Co	\$18,373	0.00%	\$1,364,783,295	\$1,284,101,819	\$80,681,475
84522	Auto Club Life Ins Co	\$16,670	0.00%	\$623,705,995	\$546,618,233	\$77,087,762
69140	First Allmerica Fin Life Ins Co	\$16,012	0.00%	\$3,559,483,894	\$3,321,842,770	\$237,641,124
69779	Union Natl Life Ins Co	\$15,584	0.00%	\$19,148,244	\$4,031,448	\$15,116,796
97691	Life Of The South Ins Co	\$15,427	0.00%	\$91,628,164	\$69,954,244	\$21,673,920
60216	Amalgamated Life Ins Co	\$15,164	0.00%	\$119,943,444	\$64,370,487	\$55,572,957
67903	Provident Amer Life & Hlth Ins Co	\$14,631	0.00%	\$18,041,998	\$1,689,417	\$16,352,581
91693	IA Amer Life Ins Co	\$14,005	0.00%	\$229,230,385	\$96,042,600	\$133,187,785
66109	Midwestern United Life Ins Co	\$13,096	0.00%	\$234,920,106	\$107,235,458	\$127,684,648
63223	Federal Life Ins Co	\$12,372	0.00%	\$227,690,296	\$212,391,616	\$15,298,680
81442	Monitor Life Ins Co Of NY	\$11,877	0.00%	\$22,296,743	\$11,848,727	\$10,448,017
14406	Industrial Alliance Ins & Fin Serv I	\$10,184	0.00%	\$202,376,137	\$157,568,625	\$44,807,512
76007	Old United Life Ins Co	\$7,354	0.00%	\$82,476,996	\$40,467,931	\$42,009,065
65951	Merit Life Ins Co	\$6,712	0.00%	\$588,831,742	\$465,994,537	\$122,837,205
84107	Griffin Leggett Burial Ins Co	\$6,444	0.00%	\$119,158	\$1,735	\$117,423
73504	Generation Life Ins Co	\$4,771	0.00%	\$32,197,448	\$2,218,138	\$29,979,310
94447	Century Life Ass Co	\$4,175	0.00%	\$12,152,758	\$5,972,895	\$6,179,863
78743	New Era Life Ins Co	\$4,085	0.00%	\$463,455,697	\$392,711,872	\$70,743,825
60003	Park Avenue Life Ins Co	\$4,020	0.00%	\$268,797,987	\$218,123,651	\$50,674,336
97764	Idealife Ins Co	\$3,730	0.00%	\$19,913,654	\$5,153,461	\$14,760,193
78700	Aetna Hlth & Life Ins Co	\$3,519	0.00%	\$2,290,562,942	\$1,990,636,737	\$299,926,205
71706	Standard Life & Cas Ins Co	\$3,304	0.00%	\$31,098,346	\$26,371,850	\$4,726,496
85561	MAPFRE Life Ins Co	\$3,208	0.00%	\$23,465,733	\$2,900,795	\$20,564,938
68446	Longevity Ins Co	\$3,138	0.00%	\$7,853,655	\$184,902	\$7,668,753
82082	Citizens Natl Life Ins Co	\$2,740	0.00%	\$12,891,245	\$10,408,232	\$2,483,013
81426	Commercial Travelers Mut Ins Co	\$2,398	0.00%	\$16,616,039	\$10,163,732	\$6,452,307
70122	Universal Fidelity Life Ins Co	\$2,148	0.00%	\$13,143,688	\$8,688,666	\$4,455,022
69647	Catamaran Ins of Ohio Inc	\$1,954	0.00%	\$151,930,638	\$118,840,323	\$33,090,315
77119	Sentinel Amer Life Ins Co	\$1,949	0.00%	\$30,514,793	\$26,302,877	\$4,211,915
85766	United Concordia Ins Co	\$1,889	0.00%	\$57,123,142	\$21,284,840	\$35,838,302
86371	Ullico Life Ins Co	\$1,556	0.00%	\$11,696,658	\$242,820	\$11,453,838
71480	Great Western Ins Co	\$1,426	0.00%	\$1,051,471,243	\$979,778,732	\$71,692,511
79987	Medico Corp Life Ins Co	\$1,333	0.00%	\$36,011,592	\$14,797,702	\$21,213,890
61581	Capitol Life Ins Co	\$1,204	0.00%	\$225,476,967	\$202,097,394	\$23,379,573
70955	USA Life One Ins Co Of IN	\$1,082	0.00%	\$36,534,856	\$22,436,468	\$14,098,388
84077	Southern Fidelity Life Ins Co	\$829	0.00%	\$79,336	\$12,017	\$67,319
79049	Alfa Life Ins Corp	\$767	0.00%	\$1,377,132,501	\$1,141,511,278	\$235,621,224
90581	Symetra Natl Life Ins Co	\$734	0.00%	\$16,832,893	\$6,410,044	\$10,422,849
62634	Delaware Amer Life Ins Co	\$663	0.00%	\$136,618,298	\$73,164,949	\$63,453,349
60250	AmFirst Ins Co	\$517	0.00%	\$47,379,658	\$6,088,506	\$41,291,152
64831	Intramercia Life Ins Co	\$392	0.00%	\$32,922,876	\$23,021,626	\$9,901,250

Life and Health (Cont.)

NAIC	Company Name	AR Premium	Market Share	Assets	Liabilities	Capital & Surplus
85189	Western United Life Assur Co	\$318	0.00%	\$1,096,339,390	\$1,025,813,626	\$70,525,764
60183	S USA Life Ins Co Inc	\$272	0.00%	\$13,796,430	\$5,707,661	\$8,088,769
	TOTAL	\$6,990,053,253	100.00%			

Property and Casualty

NAIC	Company Name	AR Premium	Market Share	Assets	Liabilities	Capital & Surplus
25178	State Farm Mut Auto Ins Co	\$408,145,362	8.93%	\$138,494,732,823	\$55,864,000,035	\$82,630,732,788
25143	State Farm Fire & Cas Co	\$294,156,808	6.43%	\$35,495,690,940	\$21,298,919,806	\$14,196,771,134
23388	Shelter Mut Ins Co	\$250,637,291	5.48%	\$3,114,796,459	\$1,326,954,143	\$1,787,842,316
13757	Farm Bureau Mut Ins Co Of AR Inc	\$242,383,306	5.30%	\$387,159,797	\$162,223,176	\$224,936,621
18325	Southern Farm Bureau Cas Ins Co	\$231,869,981	5.07%	\$2,150,348,235	\$832,515,076	\$1,317,833,159
17230	Allstate Prop & Cas Ins Co	\$119,090,851	2.60%	\$245,268,734	\$16,419,016	\$228,849,718
21628	Farmers Ins Co Inc	\$100,236,950	2.19%	\$291,748,425	\$184,557,214	\$107,191,211
20443	Continental Cas Co	\$77,201,254	1.69%	\$43,531,436,609	\$32,808,174,299	\$10,723,262,310
42919	Progressive Northwestern Ins Co	\$66,996,682	1.47%	\$1,372,010,756	\$975,830,728	\$396,180,028
10677	Cincinnati Ins Co	\$58,826,688	1.29%	\$11,194,176,670	\$6,781,745,197	\$4,412,431,473
25941	United Serv Automobile Assn	\$58,157,938	1.27%	\$32,549,432,490	\$8,185,786,096	\$24,363,646,393
39012	Safeco Ins Co Of IL	\$52,206,632	1.14%	\$185,425,346	\$4,859,305	\$180,566,041
19232	Allstate Ins Co	\$48,895,440	1.07%	\$43,271,169,901	\$27,952,897,659	\$15,318,272,242
19445	National Union Fire Ins Co Of Pitts	\$48,768,365	1.07%	\$26,764,167,828	\$20,081,336,394	\$6,682,831,434
18988	Auto Owners Ins Co	\$44,181,072	0.97%	\$13,117,628,217	\$4,340,675,334	\$8,776,952,882
16535	Zurich Amer Ins Co	\$42,378,622	0.93%	\$30,471,456,006	\$22,705,999,505	\$7,765,456,500
16322	Progressive Direct Ins Co	\$40,166,784	0.88%	\$5,835,292,995	\$4,052,189,577	\$1,783,103,418
23787	Nationwide Mut Ins Co	\$36,859,896	0.81%	\$35,923,712,072	\$23,607,837,026	\$12,315,875,046
35882	Geico Gen Ins Co	\$35,148,664	0.77%	\$209,495,918	\$68,118,660	\$141,377,258
37877	Nationwide Prop & Cas Ins Co	\$35,143,320	0.77%	\$624,183,561	\$576,595,096	\$47,588,465
27998	Travelers Home & Marine Ins Co	\$34,623,248	0.76%	\$381,804,844	\$268,060,813	\$113,744,031
25674	Travelers Prop Cas Co Of Amer	\$34,340,228	0.75%	\$848,385,771	\$404,529,337	\$443,856,434
25968	USAA Cas Ins Co	\$32,728,482	0.72%	\$9,668,643,385	\$5,216,803,002	\$4,451,840,384
24740	Safeco Ins Co Of Amer	\$32,323,402	0.71%	\$4,356,907,309	\$2,963,547,111	\$1,393,360,198
25127	State Auto Prop & Cas Ins Co	\$32,253,793	0.71%	\$2,355,609,984	\$1,700,260,197	\$655,349,787
23779	Nationwide Mut Fire Ins Co	\$31,728,648	0.69%	\$5,938,418,248	\$3,334,085,180	\$2,604,333,068
18600	USAA Gen Ind Co	\$30,545,403	0.67%	\$3,503,652,333	\$2,200,101,270	\$1,303,551,063
11185	Foremost Ins Co Grand Rapids MI	\$30,096,709	0.66%	\$2,172,211,911	\$1,078,997,918	\$1,093,213,993
40371	Columbia Mut Ins Co	\$29,709,293	0.65%	\$377,047,528	\$196,074,380	\$180,973,148
12188	Alfa Vision Ins Corp	\$26,637,487	0.58%	\$95,501,526	\$51,136,373	\$44,365,153
23035	Liberty Mut Fire Ins Co	\$26,049,383	0.57%	\$5,477,772,127	\$4,078,781,163	\$1,398,990,964
21415	Employers Mut Cas Co	\$25,310,986	0.55%	\$2,890,562,516	\$1,614,274,199	\$1,276,288,317
15512	Automobile Club Interins Exch	\$24,360,542	0.53%	\$406,259,917	\$196,317,862	\$209,942,055
11770	United Financial Cas Co	\$23,708,013	0.52%	\$2,507,593,916	\$1,952,858,295	\$554,735,621
22055	Geico Ind Co	\$23,694,673	0.52%	\$7,138,705,064	\$3,062,772,997	\$4,075,932,067
21652	Farmers Ins Exch	\$23,612,188	0.52%	\$15,566,564,412	\$11,359,805,026	\$4,206,759,386
22667	Ace Amer Ins Co	\$22,002,997	0.48%	\$12,073,965,444	\$9,495,147,186	\$2,578,818,258
25658	Travelers Ind Co	\$21,709,716	0.47%	\$20,817,833,762	\$13,973,243,548	\$6,844,590,214
20281	Federal Ins Co	\$21,520,007	0.47%	\$32,240,564,736	\$18,961,859,982	\$13,278,704,754
33987	ADM Ins Co	\$21,514,291	0.47%	\$541,860,571	\$518,660,380	\$23,200,191
17647	United Home Ins Co	\$20,643,019	0.45%	\$34,149,144	\$23,044,397	\$11,104,747
21482	Factory Mut Ins Co	\$20,615,393	0.45%	\$15,682,895,828	\$5,136,241,827	\$10,546,654,001
10642	Cherokee Ins Co	\$19,823,146	0.43%	\$434,184,128	\$281,408,513	\$152,775,615
18058	Philadelphia Ind Ins Co	\$19,756,373	0.43%	\$7,361,508,442	\$5,313,987,763	\$2,047,520,679

Property and Casualty (Cont.)

NAIC	Company Name	AR Premium	Market Share	Assets	Liabilities	Capital & Surplus
11445	CGB Ins Co	\$19,699,792	0.43%	\$337,845,769	\$192,532,404	\$145,313,365
13935	Federated Mut Ins Co	\$19,483,657	0.43%	\$5,076,209,615	\$2,213,784,601	\$2,862,425,014
19240	Allstate Ind Co	\$19,255,914	0.42%	\$121,868,901	\$2,263,275	\$119,605,626
37907	Allstate Vehicle & Prop Ins Co	\$18,647,227	0.41%	\$50,254,972	\$1,384,340	\$48,870,632
31194	Travelers Cas & Surety Co Of Amer	\$18,272,623	0.40%	\$4,184,903,769	\$2,081,307,981	\$2,103,595,788
13021	United Fire & Cas Co	\$18,171,984	0.40%	\$1,777,893,050	\$1,055,488,851	\$722,404,199
25135	State Automobile Mut Ins Co	\$17,508,220	0.38%	\$2,386,409,637	\$1,561,743,315	\$824,666,322
27120	Trumbull Ins Co	\$16,854,418	0.37%	\$219,657,779	\$122,759,708	\$96,898,072
28401	American Natl Prop & Cas Co	\$16,843,829	0.37%	\$1,275,620,989	\$639,766,765	\$635,854,224
20095	BITCO Gen Ins Corp	\$16,634,248	0.36%	\$820,841,943	\$545,695,497	\$275,146,446
16691	Great Amer Ins Co	\$16,548,567	0.36%	\$6,110,911,026	\$4,560,005,427	\$1,550,905,599
10111	American Bankers Ins Co Of FL	\$16,539,041	0.36%	\$1,877,636,283	\$1,394,387,183	\$483,249,100
13528	Brotherhood Mut Ins Co	\$16,032,014	0.35%	\$542,036,088	\$312,970,378	\$229,065,710
32700	Owners Ins Co	\$16,028,685	0.35%	\$3,883,022,410	\$2,325,321,639	\$1,557,700,771
26298	Metropolitan Prop & Cas Ins Co	\$15,266,127	0.33%	\$5,599,133,504	\$3,263,662,290	\$2,335,471,214
10335	Bridgefield Cas Ins Co	\$15,008,933	0.33%	\$58,253,268	\$8,203,534	\$50,049,734
23043	Liberty Mut Ins Co	\$14,780,630	0.32%	\$42,343,216,506	\$26,527,948,893	\$15,815,267,613
20699	Ace Prop & Cas Ins Co	\$14,646,809	0.32%	\$7,748,829,574	\$5,752,933,999	\$1,995,895,575
28223	Nationwide Agribusiness Ins Co	\$14,607,559	0.32%	\$544,595,482	\$472,964,776	\$71,630,706
21407	Emcasco Ins Co	\$14,207,476	0.31%	\$463,035,461	\$330,593,745	\$132,441,716
36781	FMH Ag Risk Ins Co	\$14,195,337	0.31%	\$254,405,709	\$145,441,122	\$108,964,587
20087	National Ind Co	\$14,034,092	0.31%	\$161,776,678,504	\$71,948,059,815	\$89,828,618,689
33049	State Volunteer Mut Ins Co	\$13,188,107	0.29%	\$1,193,207,275	\$655,231,841	\$537,975,434
27626	Firstcomp Ins Co	\$13,122,329	0.29%	\$283,213,892	\$164,462,897	\$118,750,995
22063	Government Employees Ins Co	\$12,953,446	0.28%	\$24,036,209,980	\$10,105,749,682	\$13,930,460,298
11150	Arch Ins Co	\$12,838,454	0.28%	\$3,545,425,389	\$2,718,886,021	\$826,539,368
23736	Direct Natl Ins Co	\$12,808,385	0.28%	\$16,484,300	\$9,863,045	\$6,621,255
11371	Great West Cas Co	\$12,742,177	0.28%	\$1,953,071,112	\$1,366,828,908	\$586,242,204
22292	Hanover Ins Co	\$12,680,334	0.28%	\$6,926,338,802	\$4,738,297,789	\$2,188,041,013
27235	Auto Club Family Ins Co	\$11,636,584	0.25%	\$100,915,712	\$57,970,066	\$42,945,646
40649	Economy Premier Assur Co	\$11,612,969	0.25%	\$85,948,309	\$38,587,132	\$47,361,177
10251	American Underwriters Ins Co	\$11,597,548	0.25%	\$6,112,236	\$1,228,437	\$4,883,799
30210	Esurance Prop & Cas Ins Co	\$11,455,861	0.25%	\$119,091,613	\$77,265,925	\$41,825,688
41840	Allmerica Fin Benefit Ins Co	\$11,437,078	0.25%	\$37,320,316	\$46,695	\$37,273,621
15725	Cameron Mut Ins Co	\$11,248,441	0.25%	\$78,954,503	\$43,773,875	\$35,180,628
36684	Riverport Ins Co	\$11,161,485	0.24%	\$122,618,126	\$83,332,148	\$39,285,979
37273	Axis Ins Co	\$11,041,733	0.24%	\$1,488,040,598	\$922,960,322	\$565,080,276
42376	Technology Ins Co Inc	\$10,392,469	0.23%	\$1,981,482,960	\$1,502,756,449	\$478,726,511
21253	Garrison Prop & Cas Ins Co	\$10,367,989	0.23%	\$1,707,729,563	\$1,052,393,921	\$655,335,642
36447	LM Gen Ins Co	\$10,301,172	0.23%	\$11,010,668	\$259,928	\$10,750,740
25844	Union Ins Co	\$10,245,890	0.22%	\$118,620,841	\$88,941,203	\$29,679,638
39217	QBE Ins Corp	\$10,228,567	0.22%	\$2,135,735,484	\$1,400,063,301	\$735,672,183
24147	Old Republic Ins Co	\$9,944,772	0.22%	\$2,668,770,721	\$1,634,784,568	\$1,033,986,153
19917	Liberty Ins Underwriters Inc	\$9,699,296	0.21%	\$214,324,259	\$88,684,648	\$125,639,611
13897	Farmers Mut Hail Ins Co Of IA	\$9,698,007	0.21%	\$744,548,650	\$377,986,122	\$366,562,528
23469	American Modern Home Ins Co	\$9,554,234	0.21%	\$1,277,226,354	\$841,154,906	\$436,071,448
39039	Rural Comm Ins Co	\$9,403,564	0.21%	\$3,680,000,787	\$2,986,176,294	\$693,824,493
24015	Northland Ins Co	\$9,347,585	0.20%	\$1,171,561,548	\$627,519,323	\$544,042,225
12548	American Agri Business Ins Co	\$9,292,797	0.20%	\$689,411,590	\$659,938,913	\$29,472,677
34690	Property & Cas Ins Co Of Hartford	\$8,878,918	0.19%	\$235,556,336	\$127,727,585	\$107,828,751
11839	Circle Star Ins Co RRG	\$8,746,433	0.19%	\$3,053,287	\$1,221,363	\$1,831,924
31325	Acadia Ins Co	\$8,730,794	0.19%	\$156,702,150	\$104,756,561	\$51,945,588
24538	Republic Underwriters Ins Co	\$8,653,143	0.19%	\$676,363,924	\$420,509,822	\$255,854,102
34312	Producers Agriculture Ins Co	\$8,391,213	0.18%	\$481,425,265	\$420,492,802	\$60,932,463

Property and Casualty (Cont.)

NAIC	Company Name	AR Premium	Market Share	Assets	Liabilities	Capital & Surplus
37257	Praetorian Ins Co	\$8,389,187	0.18%	\$871,524,878	\$627,595,529	\$243,929,350
34495	Doctors Co An Interins Exch	\$8,249,168	0.18%	\$3,585,359,988	\$1,776,455,921	\$1,808,904,067
42986	Standard Guar Ins Co	\$8,199,505	0.18%	\$327,458,832	\$201,204,439	\$126,254,393
19682	Hartford Fire In Co	\$8,067,097	0.18%	\$25,426,328,776	\$11,985,805,707	\$13,440,523,069
15873	United Guar Residential Ins Co	\$8,061,449	0.18%	\$3,550,416,710	\$2,199,146,057	\$1,351,270,653
38318	Starr Ind & Liab Co	\$7,966,474	0.17%	\$4,001,998,731	\$2,154,432,604	\$1,847,566,127
18767	Church Mut Ins Co	\$7,964,014	0.17%	\$1,643,867,974	\$1,058,797,014	\$585,070,960
25615	Charter Oak Fire Ins Co	\$7,959,897	0.17%	\$922,936,893	\$667,282,440	\$255,654,453
21113	United States Fire Ins Co	\$7,945,342	0.17%	\$3,736,101,887	\$2,558,147,564	\$1,177,954,323
10014	Affiliated Fm Ins Co	\$7,935,495	0.17%	\$2,589,256,590	\$1,109,667,309	\$1,479,589,281
11000	Sentinel Ins Co Ltd	\$7,894,942	0.17%	\$241,843,898	\$73,411,469	\$168,432,429
12810	MDOW Ins Co	\$7,860,387	0.17%	\$15,941,209	\$4,437,294	\$11,503,915
37478	Hartford Ins Co Of The Midwest	\$7,784,001	0.17%	\$595,620,171	\$122,312,337	\$473,307,834
25011	Wesco Ins Co	\$7,759,350	0.17%	\$1,743,377,584	\$1,409,861,850	\$333,515,734
18236	Agents Mut Ins Co	\$7,579,311	0.17%	\$3,408,636	\$1,360,843	\$2,047,793
19046	Travelers Cas Ins Co Of Amer	\$7,561,465	0.17%	\$1,942,210,478	\$1,356,255,763	\$585,954,715
40142	American Zurich Ins Co	\$7,515,760	0.16%	\$314,257,474	\$87,955,944	\$226,301,530
10804	Continental Western Ins Co	\$7,421,200	0.16%	\$206,436,567	\$116,429,562	\$90,007,005
11991	National Cas Co	\$7,407,956	0.16%	\$288,523,143	\$154,445,656	\$134,077,487
24082	Ohio Security Ins Co	\$7,378,266	0.16%	\$16,092,026	\$618,319	\$15,473,707
31895	American Interstate Ins Co	\$7,317,013	0.16%	\$1,207,740,770	\$836,375,671	\$371,365,099
28746	Equity Ins Co	\$7,125,476	0.16%	\$78,103,161	\$48,183,009	\$29,920,152
26344	Great Amer Assur Co	\$6,979,643	0.15%	\$19,505,526	\$900	\$19,504,626
42404	Liberty Ins Corp	\$6,794,448	0.15%	\$244,776,657	\$5,119,981	\$239,656,676
35319	United Automobile Ins Co	\$6,715,790	0.15%	\$339,799,969	\$271,029,724	\$68,770,246
16047	Southern Pioneer Prop & Cas Ins Co	\$6,668,605	0.15%	\$44,304,460	\$24,911,309	\$19,393,151
44369	Imperial Fire & Cas Ins Co	\$6,625,171	0.14%	\$77,429,517	\$36,857,214	\$40,572,302
42749	Traders Ins Co	\$6,514,056	0.14%	\$61,013,840	\$41,708,197	\$19,305,644
23841	New Hampshire Ins Co	\$6,501,370	0.14%	\$239,031,799	\$159,437,588	\$79,594,211
32620	National Interstate Ins Co	\$6,488,144	0.14%	\$1,200,140,217	\$904,544,115	\$295,596,102
25682	Travelers Ind Co Of CT	\$6,464,960	0.14%	\$1,075,713,580	\$721,348,065	\$354,365,515
10783	Cornerstone Natl Ins Co	\$6,288,489	0.14%	\$32,493,815	\$20,186,231	\$12,307,585
34339	Metropolitan Grp Prop & Cas Ins Co	\$6,270,871	0.14%	\$651,109,856	\$271,943,981	\$379,165,875
23965	Norfolk & Dedham Mut Fire Ins Co	\$6,232,029	0.14%	\$381,156,757	\$203,886,049	\$177,270,708
23248	Occidental Fire & Cas Co Of NC	\$6,222,790	0.14%	\$542,241,015	\$396,778,910	\$145,462,105
14138	GEICO Advantage Ins Co	\$6,132,312	0.13%	\$1,011,400,404	\$478,643,930	\$532,756,473
15032	Guideone Mut Ins Co	\$6,103,407	0.13%	\$1,232,046,553	\$767,939,491	\$464,107,062
29599	US Specialty Ins Co	\$6,054,336	0.13%	\$1,792,796,974	\$1,267,072,774	\$525,724,200
25666	Travelers Ind Co Of Amer	\$5,944,541	0.13%	\$611,695,641	\$420,961,916	\$190,733,725
14139	GEICO Choice Ins Co	\$5,870,907	0.13%	\$600,921,774	\$305,217,026	\$295,704,749
15130	Encompass Ind Co	\$5,830,902	0.13%	\$27,622,806	\$1,877,206	\$25,745,600
37885	XL Specialty Ins Co	\$5,787,336	0.13%	\$462,209,493	\$329,495,375	\$132,714,118
28535	Triangle Ins Co Inc	\$5,741,213	0.13%	\$75,465,473	\$48,128,171	\$27,337,302
28665	Cincinnati Cas Co	\$5,720,883	0.13%	\$377,670,966	\$41,167,715	\$336,503,250
21180	Sentry Select Ins Co	\$5,720,874	0.13%	\$679,070,451	\$447,106,171	\$231,964,279
15105	Safety Natl Cas Corp	\$5,650,843	0.12%	\$5,611,302,700	\$4,084,330,804	\$1,526,971,896
19615	American Reliable Ins Co	\$5,649,931	0.12%	\$260,698,649	\$172,374,174	\$88,324,475
20052	National Liab & Fire Ins Co	\$5,613,926	0.12%	\$2,377,333,412	\$1,420,249,224	\$957,084,188
25623	Phoenix Ins Co	\$5,604,688	0.12%	\$4,175,204,457	\$2,429,167,321	\$1,746,037,136
38776	Sirius Amer Ins Co	\$5,568,502	0.12%	\$1,387,644,025	\$870,065,385	\$517,578,641
11843	Medical Protective Co	\$5,471,119	0.12%	\$2,790,355,606	\$1,219,564,192	\$1,570,791,414
38970	Markel Ins Co	\$5,454,327	0.12%	\$1,459,208,083	\$1,106,337,100	\$352,870,983
20427	American Cas Co Of Reading PA	\$5,451,434	0.12%	\$150,833,779	\$36,285	\$150,797,494
13634	Essent Guar Inc	\$5,440,521	0.12%	\$1,072,557,895	\$550,385,400	\$522,172,495

Property and Casualty (Cont.)

NAIC	Company Name	AR Premium	Market Share	Assets	Liabilities	Capital & Surplus
41181	Universal Underwriters Ins Co	\$5,421,869	0.12%	\$379,857,921	\$40,211,925	\$339,645,997
34789	21st Century Centennial Ins Co	\$5,279,801	0.12%	\$588,191,953	\$6,816,805	\$581,375,148
39845	Westport Ins Corp	\$5,166,953	0.11%	\$4,692,985,518	\$3,187,695,633	\$1,505,289,885
10855	Cypress Ins Co	\$5,164,562	0.11%	\$1,284,222,840	\$978,551,001	\$305,671,839
38652	American Modern Select Ins Co	\$5,095,643	0.11%	\$292,807,668	\$240,076,385	\$52,731,283
23809	Granite State Ins Co	\$5,068,158	0.11%	\$33,844,595	\$2,439,382	\$31,405,213
19070	Standard Fire Ins Co	\$5,066,994	0.11%	\$3,583,924,589	\$2,398,381,180	\$1,185,543,409
20508	Valley Forge Ins Co	\$4,994,270	0.11%	\$75,675,470	\$40,448	\$75,635,022
25240	NAU Country Ins Co	\$4,965,444	0.11%	\$1,305,865,483	\$996,547,826	\$309,317,657
29459	Twin City Fire Ins Co	\$4,862,941	0.11%	\$653,197,684	\$366,558,541	\$286,639,143
29068	IDS Prop Cas Ins Co	\$4,849,730	0.11%	\$1,661,810,013	\$978,207,423	\$683,602,591
20044	Berkshire Hathaway Homestate Ins Co	\$4,848,433	0.11%	\$2,175,045,648	\$1,007,348,077	\$1,167,697,571
11118	Federated Rural Electric Ins Exch	\$4,804,664	0.11%	\$494,982,360	\$317,713,197	\$177,269,163
11398	Guarantee Ins Co	\$4,787,407	0.10%	\$393,684,923	\$346,866,132	\$46,818,791
14974	Pennsylvania Lumbermens Mut Ins	\$4,753,481	0.10%	\$457,197,877	\$350,949,306	\$106,248,571
21709	Truck Ins Exch	\$4,732,674	0.10%	\$2,164,804,577	\$1,540,656,873	\$624,147,704
41343	HDI Gerling Amer Ins Co	\$4,716,597	0.10%	\$268,182,400	\$135,464,905	\$132,717,495
23450	American Family Home Ins Co	\$4,708,668	0.10%	\$544,256,469	\$360,354,066	\$183,902,404
19216	Southern Ins Co	\$4,707,633	0.10%	\$41,848,458	\$11,450,590	\$30,397,868
33790	Radian Guar Inc	\$4,682,421	0.10%	\$4,008,987,802	\$2,322,474,905	\$1,686,512,897
13137	Viking Ins Co Of WI	\$4,579,516	0.10%	\$398,955,337	\$219,281,802	\$179,673,535
43575	Indemnity Ins Co Of North Amer	\$4,453,615	0.10%	\$438,557,060	\$317,833,535	\$120,723,525
10464	Canal Ins Co	\$4,444,865	0.10%	\$786,983,108	\$358,939,235	\$428,043,873
20478	National Fire Ins Co Of Hartford	\$4,373,260	0.10%	\$125,166,013	\$66,800	\$125,099,213
23280	The Cincinnati Ind Co	\$4,362,522	0.10%	\$124,381,586	\$36,626,033	\$87,755,553
23361	Shelter Gen Ins Co	\$4,319,590	0.09%	\$135,370,215	\$67,400,557	\$67,969,658
21423	Union Ins Co Of Providence	\$4,305,852	0.09%	\$119,037,773	\$61,053,889	\$57,983,884
20397	Vigilant Ins Co	\$4,293,796	0.09%	\$514,826,906	\$208,594,798	\$306,232,108
26247	American Guar & Liab Ins	\$4,292,825	0.09%	\$277,325,077	\$97,033,660	\$180,291,417
19410	Commerce & Industry Ins Co	\$4,256,319	0.09%	\$4,142,735,915	\$3,168,753,094	\$973,982,821
11042	Stonetrust Commercial Ins Co	\$4,221,381	0.09%	\$144,853,775	\$96,422,118	\$48,431,657
13838	Farmland Mut Ins Co	\$4,180,448	0.09%	\$544,213,154	\$373,619,340	\$170,593,814
10166	Accident Fund Ins Co of Amer	\$4,157,270	0.09%	\$2,780,497,473	\$1,966,669,756	\$813,827,717
38911	Berkley Natl Ins Co	\$4,146,130	0.09%	\$95,477,350	\$44,984,692	\$50,492,658
19429	Insurance Co Of The State Of PA	\$4,141,998	0.09%	\$223,875,651	\$146,690,468	\$77,185,183
29858	Mortgage Guar Ins Corp	\$4,106,799	0.09%	\$4,274,846,978	\$2,700,957,129	\$1,573,889,849
10510	Carolina Cas Ins Co	\$4,093,077	0.09%	\$180,804,360	\$81,693,194	\$99,111,166
35289	Continental Ins Co	\$4,048,629	0.09%	\$1,666,861,610	\$197,591,840	\$1,469,269,770
18295	Lafayette Ins Co	\$3,960,895	0.09%	\$188,974,561	\$104,346,907	\$84,627,654
37613	Farmers Union Mut Ins Co	\$3,948,538	0.09%	\$4,605,909	\$2,523,712	\$2,082,197
14137	GEICO Secure Ins Co	\$3,940,397	0.09%	\$417,537,007	\$148,472,406	\$269,064,601
30104	Hartford Underwriters Ins Co	\$3,927,350	0.09%	\$1,590,016,547	\$981,198,651	\$608,817,896
13056	RLI Ins Co	\$3,903,768	0.09%	\$1,725,093,482	\$859,825,084	\$865,268,398
13565	Arkansas Mut Ins Co	\$3,873,389	0.08%	\$6,347,445	\$2,211,525	\$4,135,920
27154	Atlantic Specialty Ins Co	\$3,865,591	0.08%	\$2,340,296,453	\$1,717,961,036	\$622,335,417
13714	Pharmacists Mut Ins Co	\$3,815,041	0.08%	\$269,087,094	\$163,309,009	\$105,778,085
33391	ProAssurance Ind Co Inc	\$3,787,423	0.08%	\$1,382,627,571	\$826,295,176	\$556,332,395
21687	Mid Century Ins Co	\$3,750,453	0.08%	\$3,904,871,743	\$2,881,229,019	\$1,023,642,724
28452	Republic Mortgage Ins Co	\$3,707,175	0.08%	\$731,840,190	\$708,468,729	\$23,371,461
22314	RSUI Ind Co	\$3,706,521	0.08%	\$3,328,975,022	\$1,847,409,758	\$1,481,565,264
20141	National Trust Ins Co	\$3,691,713	0.08%	\$35,917,403	\$(920,852)	\$36,838,255
13188	Western Surety Co	\$3,664,053	0.08%	\$1,823,699,967	\$500,361,661	\$1,323,338,306
19038	Travelers Cas & Surety Co	\$3,622,979	0.08%	\$16,273,610,870	\$9,897,344,239	\$6,376,266,631
39306	Fidelity & Deposit Co Of MD	\$3,613,580	0.08%	\$210,198,923	\$40,502,746	\$169,696,177

Property and Casualty (Cont.)

NAIC	Company Name	AR Premium	Market Share	Assets	Liabilities	Capital & Surplus
22012	Motors Ins Corp	\$3,538,718	0.08%	\$2,077,380,520	\$1,330,570,527	\$746,809,993
38458	Genworth Mortgage Ins Corp	\$3,476,537	0.08%	\$2,627,140,967	\$1,554,023,815	\$1,073,117,152
10204	Consumers Ins Usa Inc	\$3,465,315	0.08%	\$70,719,931	\$39,752,931	\$30,967,001
24554	XL Ins Amer Inc	\$3,433,075	0.08%	\$678,044,841	\$466,913,480	\$211,131,361
29424	Hartford Cas Ins Co	\$3,393,163	0.07%	\$2,249,932,482	\$1,345,537,508	\$904,394,974
10178	FCCI Ins Co	\$3,279,971	0.07%	\$1,802,240,087	\$1,221,107,653	\$581,132,434
20494	Transportation Ins Co	\$3,244,392	0.07%	\$83,861,283	\$84,983	\$83,776,301
12416	Protective Ins Co	\$3,229,855	0.07%	\$753,493,124	\$364,065,940	\$389,427,184
19402	AIG Prop Cas Co	\$3,210,211	0.07%	\$4,730,194,481	\$3,417,369,332	\$1,312,825,149
12304	Accident Fund Gen Ins Co	\$3,197,859	0.07%	\$255,591,077	\$190,388,482	\$65,202,595
11255	Caterpillar Ins Co	\$3,186,603	0.07%	\$650,315,165	\$363,668,487	\$286,646,678
19720	American Alt Ins Corp	\$3,143,665	0.07%	\$550,779,275	\$351,319,803	\$199,459,472
37869	Pre Paid Legal Cas Inc	\$3,134,257	0.07%	\$18,538,296	\$2,866,739	\$15,671,557
12300	American Contractors Ins Co RRG	\$3,132,915	0.07%	\$33,430,577	\$24,611,899	\$8,818,678
43494	American Hallmark Ins Co Of TX	\$3,100,427	0.07%	\$375,857,587	\$236,621,011	\$139,236,576
36625	Old Reliable Cas Co	\$3,064,966	0.07%	\$6,093,779	\$1,074,737	\$5,019,041
20109	BITCO Natl Ins Co	\$3,037,576	0.07%	\$482,270,890	\$342,217,714	\$140,053,176
37648	Permanent Gen Assur Corp	\$3,027,657	0.07%	\$313,074,798	\$200,383,837	\$112,690,961
36064	Hanover Amer Ins Co	\$2,966,500	0.06%	\$29,888,593	\$49,793	\$29,838,800
10120	Everest Natl Ins Co	\$2,886,303	0.06%	\$740,506,106	\$605,179,090	\$135,327,016
19658	Bristol W Ins Co	\$2,854,734	0.06%	\$132,328,818	\$85,591,711	\$46,737,107
16608	New York Marine & Gen Ins Co	\$2,817,870	0.06%	\$1,191,894,296	\$812,663,535	\$379,230,762
30945	Plaza Ins Co	\$2,795,202	0.06%	\$61,888,677	\$35,101,244	\$26,787,433
34037	Hallmark Ins Co	\$2,776,118	0.06%	\$288,644,379	\$186,197,040	\$102,447,339
26182	Harleysville Worcester Ins Co	\$2,756,304	0.06%	\$204,036,713	\$149,326,896	\$54,709,817
10030	Westchester Fire Ins Co	\$2,724,484	0.06%	\$1,797,867,225	\$1,066,491,932	\$731,375,293
19518	Catlin Ins Co	\$2,707,901	0.06%	\$260,432,146	\$207,955,228	\$52,476,918
10895	Midwest Ins Co	\$2,671,881	0.06%	\$87,163,848	\$55,785,007	\$31,378,841
11630	Jefferson Ins Co	\$2,594,278	0.06%	\$78,272,835	\$26,301,339	\$51,971,496
11800	Foremost Prop & Cas Ins Co	\$2,580,351	0.06%	\$64,103,999	\$46,234,750	\$17,869,250
11004	Alfa Specialty Ins Corp	\$2,577,582	0.06%	\$50,822,935	\$24,660,275	\$26,162,660
40045	Starnet Ins Co	\$2,572,242	0.06%	\$219,272,144	\$104,967,918	\$114,304,226
40460	Sagamore Ins Co	\$2,513,910	0.05%	\$156,717,205	\$31,643,167	\$125,074,038
14982	Penn Millers Ins Co	\$2,479,700	0.05%	\$122,372,117	\$56,002,646	\$66,369,471
38245	BCS Ins Co	\$2,466,505	0.05%	\$272,207,159	\$110,890,836	\$161,316,323
12114	National Security Fire & Cas Co	\$2,445,362	0.05%	\$76,405,973	\$41,960,170	\$34,445,803
23396	Amerisure Mut Ins Co	\$2,417,995	0.05%	\$2,124,488,334	\$1,249,307,958	\$875,180,376
10723	Nationwide Assur Co	\$2,417,064	0.05%	\$144,087,826	\$83,130,674	\$60,957,152
23612	Midwest Employers Cas Co	\$2,372,065	0.05%	\$140,066,028	\$37,340,056	\$102,725,972
16705	Dealers Assur Co	\$2,369,721	0.05%	\$98,183,761	\$42,011,025	\$56,172,736
22136	Great Amer Ins Co of NY	\$2,356,943	0.05%	\$48,280,643	\$12,544	\$48,268,099
24414	General Cas Co Of WI	\$2,342,038	0.05%	\$695,748,242	\$377,870,177	\$317,878,065
18023	Star Ins Co	\$2,320,116	0.05%	\$946,435,091	\$632,328,638	\$314,106,453
22837	AGCS Marine Ins Co	\$2,305,182	0.05%	\$314,484,560	\$168,163,876	\$146,320,684
35300	Allianz Global Risks US Ins Co	\$2,274,476	0.05%	\$4,345,352,979	\$2,483,189,363	\$1,862,163,616
20303	Great Northern Ins Co	\$2,262,105	0.05%	\$1,647,473,096	\$1,178,243,425	\$469,229,671
24988	Sentry Ins A Mut Co	\$2,261,334	0.05%	\$7,214,572,558	\$2,810,284,129	\$4,404,288,429
24074	Ohio Cas Ins Co	\$2,259,878	0.05%	\$5,578,553,267	\$3,941,123,727	\$1,637,429,540
10641	Endurance Amer Ins Co	\$2,246,188	0.05%	\$1,227,426,853	\$964,759,613	\$262,667,240
40843	Universal Underwriters Of TX Ins	\$2,158,735	0.05%	\$15,973,621	\$6,606,286	\$9,367,335
10847	Cumis Ins Society Inc	\$2,151,572	0.05%	\$1,711,811,870	\$911,344,925	\$800,466,945
10023	Alliance Of Nonprofits For Ins RRG	\$2,145,262	0.05%	\$87,785,525	\$54,128,516	\$33,657,009
19062	Automobile Ins Co Of Hartford CT	\$2,139,203	0.05%	\$1,000,828,705	\$678,445,996	\$322,382,709
22357	Hartford Accident & Ind Co	\$2,121,964	0.05%	\$11,521,714,780	\$8,245,092,564	\$3,276,622,216

Property and Casualty (Cont.)

NAIC	Company Name	AR Premium	Market Share	Assets	Liabilities	Capital & Surplus
22306	Massachusetts Bay Ins Co	\$2,103,847	0.05%	\$64,230,940	\$14,078	\$64,216,862
19488	Amerisure Ins Co	\$2,095,608	0.05%	\$785,855,803	\$547,171,701	\$238,684,102
12873	Privilege Underwriters Recp Exch	\$1,975,881	0.04%	\$325,048,308	\$226,441,672	\$98,606,636
11242	Allied Eastern Ind Co	\$1,965,280	0.04%	\$73,827,635	\$57,520,831	\$16,306,804
28304	Federated Serv Ins Co	\$1,958,548	0.04%	\$455,753,266	\$244,582,524	\$211,170,742
21326	Empire Fire & Marine Ins Co	\$1,952,148	0.04%	\$75,141,587	\$34,540,146	\$40,601,441
21873	Firemans Fund Ins Co	\$1,947,588	0.04%	\$5,500,376,521	\$4,204,055,741	\$1,296,320,780
25054	Hudson Ins Co	\$1,941,316	0.04%	\$1,082,816,423	\$624,948,359	\$457,868,064
40827	Virginia Surety Co Inc	\$1,925,333	0.04%	\$1,147,037,102	\$783,400,942	\$363,636,160
10051	Lyndon Southern Ins Co	\$1,923,478	0.04%	\$130,818,839	\$88,196,872	\$42,621,967
33650	Mendota Ins Co	\$1,914,377	0.04%	\$118,264,816	\$79,543,453	\$38,721,363
34274	Central States Ind Co Of Omaha	\$1,869,838	0.04%	\$417,290,095	\$62,340,538	\$354,949,557
26310	Granite Re Inc	\$1,849,776	0.04%	\$43,629,899	\$23,590,564	\$20,039,335
16578	Stillwater Prop & Cas Ins Co	\$1,798,784	0.04%	\$118,356,108	\$8,157,366	\$110,198,742
29580	Berkley Regional Ins Co	\$1,788,958	0.04%	\$711,646,977	\$31,723,513	\$679,923,464
21784	Firemens Ins Co Of Washington DC	\$1,768,879	0.04%	\$95,252,582	\$63,093,085	\$32,159,497
33600	LM Ins Corp	\$1,720,032	0.04%	\$119,636,218	\$4,423,807	\$115,212,411
43656	Louisiana Med Mut Ins Co	\$1,694,074	0.04%	\$427,086,369	\$212,217,840	\$214,868,529
19976	Amica Mut Ins Co	\$1,667,159	0.04%	\$4,961,852,112	\$2,350,587,940	\$2,611,264,172
42307	Navigators Ins Co	\$1,648,626	0.04%	\$2,568,520,245	\$1,618,254,455	\$950,265,790
26832	Great Amer Alliance Ins Co	\$1,645,461	0.04%	\$29,858,215	\$53,013	\$29,805,202
42803	Guideone Elite Ins Co	\$1,644,316	0.04%	\$30,765,668	\$6,125,222	\$24,640,446
24260	Progressive Cas Ins Co	\$1,632,935	0.04%	\$6,245,560,407	\$4,635,468,757	\$1,610,091,650
10718	Retailers Cas Ins Co	\$1,597,013	0.03%	\$77,373,817	\$41,462,692	\$35,911,125
22756	Horace Mann Prop & Cas Ins Co	\$1,589,908	0.03%	\$287,602,160	\$164,819,009	\$122,783,151
33588	First Liberty Ins Corp	\$1,588,142	0.03%	\$23,011,078	\$639,841	\$22,371,237
42757	Agri Gen Ins Co	\$1,583,907	0.03%	\$107,028,049	\$7,117,774	\$99,910,275
19879	Security Natl Ins Co	\$1,567,492	0.03%	\$991,421,848	\$841,880,107	\$149,541,741
23760	Nationwide Gen Ins Co	\$1,549,094	0.03%	\$346,985,272	\$324,269,619	\$22,715,653
19887	Trinity Universal Ins Co	\$1,543,265	0.03%	\$1,964,731,788	\$1,147,304,229	\$817,427,559
36137	Travelers Commercial Ins Co	\$1,542,843	0.03%	\$346,618,920	\$248,825,941	\$97,792,978
26433	Harco Natl Ins Co	\$1,541,128	0.03%	\$323,468,273	\$158,810,641	\$164,657,632
23418	Mid Continent Cas Co	\$1,532,512	0.03%	\$488,315,616	\$334,704,985	\$153,610,631
23582	Harleysville Ins Co	\$1,483,547	0.03%	\$137,250,985	\$111,574,581	\$25,676,404
22322	Greenwich Ins Co	\$1,468,303	0.03%	\$1,088,280,737	\$737,876,592	\$350,404,145
14206	Holyoke Mut Ins Co In Salem	\$1,462,141	0.03%	\$215,431,673	\$115,978,542	\$99,453,131
24767	St Paul Fire & Marine Ins Co	\$1,450,336	0.03%	\$18,297,397,494	\$12,734,125,013	\$5,563,272,481
20516	Euler Hermes N Amer Ins Co	\$1,450,060	0.03%	\$399,374,603	\$253,273,348	\$146,101,255
35696	Harleysville Preferred Ins Co	\$1,448,149	0.03%	\$139,333,001	\$93,655,016	\$45,677,985
19801	Argonaut Ins Co	\$1,435,640	0.03%	\$1,268,863,997	\$852,800,634	\$416,063,363
14354	Jewelers Mut Ins Co	\$1,416,594	0.03%	\$365,317,184	\$138,847,519	\$226,469,665
11523	Wright Natl Flood Ins Co	\$1,400,357	0.03%	\$22,104,272	\$6,962,763	\$15,141,509
23663	National Amer Ins Co	\$1,400,194	0.03%	\$188,488,103	\$122,946,849	\$65,541,254
32603	Berkley Ins Co	\$1,380,634	0.03%	\$17,109,329,278	\$11,813,769,899	\$5,295,559,379
31003	Tri State Ins Co Of MN	\$1,372,725	0.03%	\$42,242,997	\$10,103,265	\$32,139,732
24112	Westfield Ins Co	\$1,352,893	0.03%	\$2,594,426,897	\$1,501,987,883	\$1,092,439,014
28258	Continental Ind Co	\$1,342,288	0.03%	\$177,963,144	\$93,200,759	\$84,762,385
11126	Sompo Japan Ins Co of Amer	\$1,334,752	0.03%	\$1,177,586,498	\$688,860,781	\$488,725,717
38601	MIC Prop & Cas Ins Corp	\$1,302,655	0.03%	\$92,001,235	\$37,916,885	\$54,084,350
10952	Transamerica Cas Ins Co	\$1,298,079	0.03%	\$355,566,946	\$189,038,430	\$166,528,516
12777	Chubb Ind Ins Co	\$1,288,850	0.03%	\$374,137,188	\$223,374,785	\$150,762,403
23728	National Gen Ins Co	\$1,287,239	0.03%	\$53,558,777	\$27,264,723	\$26,294,054
21164	Dairyland Ins Co	\$1,286,271	0.03%	\$1,239,562,858	\$757,547,389	\$482,015,470
21857	American Ins Co	\$1,278,927	0.03%	\$310,914,121	\$88,666,810	\$222,247,311

Property and Casualty (Cont.)

NAIC	Company Name	AR Premium	Market Share	Assets	Liabilities	Capital & Surplus
10945	Tokio Marine Amer Ins Co	\$1,255,513	0.03%	\$1,360,545,708	\$849,957,992	\$510,587,716
12831	State Natl Ins Co Inc	\$1,243,906	0.03%	\$319,311,121	\$89,481,590	\$229,829,531
32220	21st Century N Amer Ins Co	\$1,234,277	0.03%	\$582,977,225	\$26,479,458	\$556,497,767
26492	Courtesy Ins Co	\$1,207,675	0.03%	\$764,819,021	\$404,714,838	\$360,104,184
12262	Pennsylvania Manufacturers Assoc Ins	\$1,190,459	0.03%	\$821,901,371	\$570,166,750	\$251,734,621
13927	Homesite Ins Co Of The Midwest	\$1,190,279	0.03%	\$339,602,598	\$238,888,276	\$100,714,322
25224	Great Divide Ins Co	\$1,168,549	0.03%	\$224,667,990	\$156,564,739	\$68,103,252
42617	MAG Mut Ins Co	\$1,164,673	0.03%	\$1,719,189,134	\$838,476,480	\$880,712,654
11832	Health Care Industry Liab Recip Ins	\$1,164,013	0.03%	\$48,831,902	\$32,179,799	\$16,652,103
32387	Star Cas Ins Co	\$1,142,587	0.02%	\$14,049,891	\$6,333,426	\$7,716,465
33162	Bankers Ins Co	\$1,128,281	0.02%	\$150,509,826	\$73,830,047	\$76,679,779
37540	Beazley Ins Co Inc	\$1,113,936	0.02%	\$282,999,585	\$163,849,389	\$119,150,196
12870	Sentruiuty Cas Co	\$1,109,376	0.02%	\$168,571,384	\$123,207,172	\$45,364,212
18333	Peerless Ind Ins Co	\$1,087,701	0.02%	\$190,850,977	\$7,175,625	\$183,675,352
28932	Markel Amer Ins Co	\$1,086,927	0.02%	\$329,312,720	\$192,850,661	\$136,462,059
12696	America First Ins Co	\$1,071,730	0.02%	\$14,444,934	\$30,769	\$14,414,165
42978	American Security Ins Co	\$1,068,774	0.02%	\$1,584,935,296	\$1,026,090,114	\$558,845,182
37915	Essentia Ins Co	\$1,060,729	0.02%	\$67,022,114	\$36,654,175	\$30,367,939
25895	United States Liab Ins Co	\$1,056,095	0.02%	\$897,218,348	\$337,997,697	\$559,220,651
24139	Old Republic Gen Ins Corp	\$1,045,166	0.02%	\$2,004,034,724	\$1,503,864,961	\$500,169,763
27251	PMI Mortgage Ins Co	\$1,039,968	0.02%	\$1,028,206,469	\$2,510,051,411	\$(1,481,844,942)
21881	National Surety Corp	\$1,039,165	0.02%	\$212,814,591	\$72,715,094	\$140,099,497
26662	Milwaukee Cas Ins Co	\$1,037,663	0.02%	\$70,255,605	\$48,028,254	\$22,227,351
19640	Columbia Natl Ins Co	\$1,034,373	0.02%	\$89,429,979	\$51,420,838	\$38,009,141
24171	Netherlands Ins Co The	\$1,011,698	0.02%	\$92,014,603	\$5,401,508	\$86,613,095
27855	Zurich Amer Ins Co Of IL	\$1,008,774	0.02%	\$48,209,445	\$13,732,109	\$34,477,336
41513	Foremost Signature Ins Co	\$997,946	0.02%	\$74,105,427	\$54,179,690	\$19,925,737
10690	Allied World Natl Assur Co	\$994,136	0.02%	\$294,658,095	\$160,438,128	\$134,219,967
42994	Progressive Classic Ins Co	\$972,744	0.02%	\$348,822,966	\$249,370,841	\$99,452,125
26077	Lancer Ins Co	\$969,076	0.02%	\$632,709,863	\$449,720,519	\$182,989,344
22683	Teachers Ins Co	\$961,843	0.02%	\$340,024,602	\$191,942,026	\$148,082,576
10916	Suretec Ins Co	\$954,578	0.02%	\$220,872,168	\$134,312,571	\$86,559,598
41483	Farmington Cas Co	\$943,761	0.02%	\$1,005,370,826	\$714,042,476	\$291,328,350
10936	Seneca Ins Co Inc	\$943,116	0.02%	\$199,534,882	\$61,161,693	\$138,373,189
20117	California Cas Ind Exch	\$934,474	0.02%	\$582,281,856	\$297,951,440	\$284,330,415
21296	Alterra Amer Ins Co	\$907,514	0.02%	\$454,766,245	\$297,567,234	\$157,199,011
14559	Guideone Specialty Mut Ins Co	\$885,706	0.02%	\$265,383,196	\$167,292,827	\$98,090,369
22209	Freedom Specialty Ins Co	\$880,665	0.02%	\$50,723,186	\$38,093,520	\$12,629,666
21105	North River Ins Co	\$871,724	0.02%	\$1,030,464,864	\$724,227,858	\$306,237,006
29700	North Amer Elite Ins Co	\$864,763	0.02%	\$129,097,562	\$94,580,414	\$34,517,148
19631	American Road Ins Co	\$861,141	0.02%	\$642,209,105	\$391,109,049	\$251,100,056
31348	Crum & Forster Ind Co	\$848,534	0.02%	\$50,254,900	\$34,206,626	\$16,048,274
26565	Ohio Ind Co	\$835,287	0.02%	\$145,236,047	\$99,747,686	\$45,488,361
11223	Safeway Ins Co Of AL	\$825,893	0.02%	\$59,752,787	\$28,696,380	\$31,056,407
41459	Armed Forces Ins Exch	\$816,800	0.02%	\$142,849,612	\$66,737,970	\$76,111,642
33022	AXA Ins Co	\$806,123	0.02%	\$208,477,559	\$88,665,945	\$119,811,614
18287	Assured Guar Municipal Corp	\$796,460	0.02%	\$5,788,476,414	\$3,347,667,485	\$2,440,808,929
20346	Pacific Ind Co	\$788,099	0.02%	\$6,916,030,245	\$3,985,784,723	\$2,930,245,522
24198	Peerless Ins Co	\$773,641	0.02%	\$13,172,391,682	\$9,855,641,908	\$3,316,749,774
44725	1st Auto & Cas Ins Co	\$772,031	0.02%	\$28,608,866	\$16,708,828	\$11,900,038
10701	Bridgefield Employers Ins Co	\$769,976	0.02%	\$125,074,479	\$3,962,506	\$121,111,974
24066	American Fire & Cas Co	\$753,417	0.02%	\$41,199,414	\$1,674,453	\$39,524,961
35408	Imperium Ins Co	\$752,288	0.02%	\$382,450,875	\$204,580,923	\$177,869,952
31925	Falls Lake Natl Ins Co	\$742,793	0.02%	\$299,501,394	\$242,321,856	\$57,179,538

Property and Casualty (Cont.)

NAIC	Company Name	AR Premium	Market Share	Assets	Liabilities	Capital & Surplus
29980	First Colonial Ins Co	\$736,748	0.02%	\$374,180,335	\$214,455,459	\$159,724,876
36072	National Guardian RRG Inc	\$731,480	0.02%	\$11,398,810	\$4,753,307	\$6,645,503
10346	Employers Preferred Ins Co	\$727,928	0.02%	\$1,049,892,891	\$769,278,515	\$280,614,376
28460	Sentry Cas Co	\$721,842	0.02%	\$272,518,724	\$200,631,592	\$71,887,133
10103	American Agricultural Ins Co	\$720,582	0.02%	\$1,152,576,572	\$611,420,279	\$541,156,293
24449	Regent Ins Co	\$710,856	0.02%	\$150,195,687	\$121,620,429	\$28,575,258
18430	Agricultural Workers Mut Auto Ins	\$709,682	0.02%	\$82,273,876	\$48,090,983	\$34,182,893
29874	North Amer Specialty Ins Co	\$688,738	0.02%	\$576,748,885	\$181,402,894	\$395,345,991
27928	Amex Assur Co	\$686,003	0.02%	\$256,277,634	\$71,954,506	\$184,323,128
33898	Aegis Security Ins Co	\$671,676	0.01%	\$111,730,377	\$55,286,377	\$56,444,000
13695	National Mortgage Ins Corp	\$666,175	0.01%	\$487,699,414	\$120,809,359	\$366,890,055
15954	AmTrust Ins Co of KS Inc	\$656,424	0.01%	\$67,818,005	\$43,125,954	\$24,692,051
36234	Preferred Professional Ins Co	\$643,000	0.01%	\$295,126,423	\$138,258,545	\$156,867,878
10639	Attorneys Liab Assur Society Inc RRG	\$627,451	0.01%	\$1,944,690,250	\$1,387,539,647	\$557,150,603
10071	Encompass Ins Co Of Amer	\$610,603	0.01%	\$20,090,679	\$103,812	\$19,986,867
25496	StarStone Natl Ins Co	\$608,053	0.01%	\$249,248,522	\$156,445,443	\$92,803,079
42498	Cameron Natl Ins Co	\$604,999	0.01%	\$11,941,820	\$2,013,784	\$9,928,036
18619	Platte River Ins Co	\$597,098	0.01%	\$127,762,605	\$85,538,113	\$42,224,492
22039	General Reins Corp	\$594,877	0.01%	\$15,320,456,659	\$4,269,942,920	\$11,050,513,739
19704	American States Ins Co	\$594,776	0.01%	\$138,460,726	\$10,359,068	\$128,101,658
10472	Capitol Ind Corp	\$588,887	0.01%	\$478,842,403	\$253,306,687	\$225,535,716
24503	Catlin Ind Co	\$588,569	0.01%	\$122,324,756	\$58,731,759	\$63,592,997
10817	Plateau Cas Ins Co	\$588,554	0.01%	\$40,232,129	\$19,889,061	\$20,343,068
10922	Insuremax Ins Co	\$586,902	0.01%	\$8,237,993	\$6,110,314	\$2,127,679
32506	Monroe Guar Ins Co	\$583,289	0.01%	\$49,676,878	\$(2,340,338)	\$52,017,216
30180	Assured Guar Corp	\$579,277	0.01%	\$3,066,922,461	\$1,701,634,836	\$1,365,287,625
13269	Zenith Ins Co	\$577,985	0.01%	\$1,908,831,599	\$1,287,159,940	\$621,671,659
10676	First Guard Ins Co	\$574,428	0.01%	\$24,927,679	\$2,677,809	\$22,249,870
42587	Depositors Ins Co	\$528,519	0.01%	\$292,864,674	\$256,075,555	\$36,789,119
33723	Great Amer Spirit Ins Co	\$520,681	0.01%	\$18,443,107	\$19,333	\$18,423,774
21261	Electric Ins Co	\$514,764	0.01%	\$1,507,785,488	\$962,237,984	\$545,547,504
10349	Acceptance Cas Ins Co	\$507,719	0.01%	\$73,285,466	\$22,991,314	\$50,294,152
18694	Great Midwest Ins Co	\$506,538	0.01%	\$211,106,239	\$103,531,732	\$107,574,507
44393	West Amer Ins Co	\$505,815	0.01%	\$49,418,794	\$3,973,405	\$45,445,389
37220	Direct Ins Co	\$505,316	0.01%	\$80,449,630	\$55,462,491	\$24,987,139
15580	Scottsdale Ind Co	\$497,951	0.01%	\$79,284,294	\$41,572,915	\$37,711,379
10216	American Contractors Ind Co	\$495,355	0.01%	\$324,841,833	\$211,793,162	\$113,048,671
10353	Ooida RRG Inc	\$494,836	0.01%	\$92,106,417	\$72,313,435	\$19,792,983
23647	Ironshore Ind Inc	\$487,208	0.01%	\$359,823,487	\$205,854,298	\$153,969,189
10200	Hiscox Ins Co Inc	\$476,076	0.01%	\$190,250,845	\$128,934,310	\$61,316,535
21849	American Automobile Ins Co	\$476,005	0.01%	\$231,984,531	\$57,381,956	\$174,602,575
19100	Amco Ins Co	\$471,107	0.01%	\$947,943,752	\$741,686,084	\$206,257,668
11231	Generali Us Branch	\$469,925	0.01%	\$59,677,286	\$32,208,732	\$27,468,554
20362	Mitsui Sumitomo Ins Co of Amer	\$468,753	0.01%	\$904,315,923	\$569,004,255	\$335,311,668
23426	Oklahoma Surety Co	\$452,590	0.01%	\$26,333,295	\$10,832,121	\$15,501,174
45934	American Compensation Ins Co	\$446,982	0.01%	\$70,934,236	\$17,517,208	\$53,417,028
10054	Securian Cas Co	\$439,795	0.01%	\$224,111,560	\$111,249,837	\$112,861,723
14494	Merchants Bonding Co a Mut	\$429,345	0.01%	\$160,466,599	\$63,572,740	\$96,893,859
10815	Verlan Fire Ins Co MD	\$427,385	0.01%	\$25,975,988	\$33,364	\$25,942,624
41238	Trans Pacific Ins Co	\$417,027	0.01%	\$72,986,216	\$21,446,583	\$51,539,633
11592	International Fidelity Ins Co	\$413,742	0.01%	\$203,095,057	\$119,218,033	\$83,877,024
11573	Accident Ins Co Inc	\$412,534	0.01%	\$135,943,165	\$130,693,981	\$5,249,184
12305	Accident Fund Natl Ins Co	\$410,440	0.01%	\$242,453,236	\$171,960,621	\$70,492,615
44121	Oms Natl Ins Co Rrg	\$408,230	0.01%	\$384,305,785	\$167,542,485	\$216,763,300

Property and Casualty (Cont.)

NAIC	Company Name	AR Premium	Market Share	Assets	Liabilities	Capital & Surplus
42048	Diamond State Ins Co	\$401,787	0.01%	\$130,007,585	\$71,731,055	\$58,276,530
11600	Frank Winston Crum Ins Co	\$400,916	0.01%	\$54,492,402	\$40,728,194	\$13,764,208
43460	Aspen Amer Ins Co	\$388,656	0.01%	\$504,937,642	\$236,390,297	\$268,547,345
31089	Repwest Ins Co	\$386,525	0.01%	\$302,910,046	\$144,533,688	\$158,376,357
16624	Allied World Specialty Ins Co	\$386,172	0.01%	\$786,672,632	\$380,982,709	\$405,689,923
15865	NCMIC Ins Co	\$382,363	0.01%	\$713,011,877	\$451,280,821	\$261,731,056
40266	ARCH Mortgage Ins Co	\$381,667	0.01%	\$436,418,566	\$301,933,826	\$134,484,740
24732	General Ins Co Of Amer	\$378,215	0.01%	\$108,305,823	\$2,631,298	\$105,674,525
42552	Nova Cas Co	\$376,102	0.01%	\$94,308,693	\$2,544,860	\$91,763,833
19690	American Economy Ins Co	\$370,034	0.01%	\$72,944,694	\$6,330,151	\$66,614,543
37923	GEICO Marine Ins Co	\$359,490	0.01%	\$85,207,123	\$36,725,352	\$48,481,771
31470	Norguard Ins Co	\$357,747	0.01%	\$615,676,389	\$449,455,369	\$166,221,020
12866	T H E Ins Co	\$357,421	0.01%	\$192,539,874	\$125,403,238	\$67,136,636
22276	Berkshire Hathaway Specialty Ins Co	\$354,779	0.01%	\$3,371,586,922	\$327,475,431	\$3,044,111,491
41998	American Southern Home Ins Co	\$353,194	0.01%	\$163,124,783	\$118,415,669	\$44,709,114
21172	Vanliner Ins Co	\$353,181	0.01%	\$374,301,888	\$243,506,110	\$130,795,778
39942	American Natl Gen Ins Co	\$352,738	0.01%	\$101,541,794	\$36,535,374	\$65,006,420
11452	Hartford Steam Boil Inspec & Ins Co	\$350,091	0.01%	\$1,293,018,352	\$657,242,279	\$635,776,073
12572	Selective Ins Co Of Amer	\$350,069	0.01%	\$2,140,672,243	\$1,619,894,455	\$520,777,788
44105	Ophthalmic Mut Ins Co RRG	\$350,003	0.01%	\$275,088,108	\$82,374,092	\$192,714,016
40258	AIG Assur Co	\$346,470	0.01%	\$34,285,083	\$1,741,394	\$32,543,689
12754	Medicus Ins Co	\$340,862	0.01%	\$67,097,437	\$32,833,652	\$34,263,785
34762	Sunz Ins Co	\$339,839	0.01%	\$77,035,682	\$63,987,593	\$13,048,089
26921	Everest Reins Co	\$339,834	0.01%	\$9,979,640,039	\$6,768,749,080	\$3,210,890,959
18279	Bankers Standard Ins Co	\$329,284	0.01%	\$470,567,668	\$317,264,196	\$153,303,472
14460	Podiatry Ins Co Of Amer	\$321,714	0.01%	\$308,398,041	\$184,047,616	\$124,350,425
10083	The Natl Catholic RRG Inc	\$318,911	0.01%	\$65,049,332	\$51,968,107	\$13,081,224
15911	American Mining Ins Co	\$316,489	0.01%	\$34,911,668	\$9,811,484	\$25,100,184
42897	American Serv Ins Co Inc	\$316,435	0.01%	\$144,531,793	\$93,413,983	\$51,117,810
11598	Applied Medico Legal Solutions RRG	\$314,209	0.01%	\$131,873,137	\$96,361,988	\$35,511,149
22551	Mitsui Sumitomo Ins USA Inc	\$311,068	0.01%	\$132,908,636	\$70,528,588	\$62,380,048
16217	National Farmers Union Prop & Cas	\$305,819	0.01%	\$139,696,749	\$96,425,531	\$43,271,218
12750	Evergreen Natl Ind Co	\$303,712	0.01%	\$44,556,376	\$14,010,665	\$30,545,711
13307	Lexon Ins Co	\$299,636	0.01%	\$209,968,844	\$157,400,487	\$52,568,357
36897	Manufacturers Alliance Ins Co	\$295,175	0.01%	\$182,878,267	\$123,688,929	\$59,189,338
28339	Gateway Ins Co	\$292,612	0.01%	\$64,398,002	\$45,589,459	\$18,808,543
31232	Work First Cas Co	\$290,354	0.01%	\$38,935,902	\$28,517,180	\$10,418,722
19828	Argonaut Midwest Ins Co	\$288,526	0.01%	\$48,334,839	\$31,674,980	\$16,659,859
36650	Guarantee Co Of N Amer USA	\$276,787	0.01%	\$206,802,059	\$37,248,681	\$169,553,378
10069	Housing Authority Prop A Mut Co	\$274,700	0.01%	\$165,031,396	\$45,705,454	\$119,325,942
19984	ACIG Ins Co	\$267,077	0.01%	\$427,403,890	\$313,248,651	\$114,155,239
10724	Eastern Alliance Ins Co	\$266,277	0.01%	\$269,316,707	\$173,495,796	\$95,820,911
32778	Washington Intl Ins Co	\$264,735	0.01%	\$101,810,156	\$24,840,696	\$76,969,460
19941	American Commerce Ins Co	\$263,231	0.01%	\$329,898,401	\$225,052,023	\$104,846,378
27847	Insurance Co Of The West	\$261,582	0.01%	\$1,916,957,367	\$1,163,642,749	\$753,314,618
44237	Mental Hlth RRG	\$251,569	0.01%	\$27,018,284	\$12,054,897	\$14,963,387
10367	Avemco Ins Co	\$244,511	0.01%	\$78,437,696	\$31,211,653	\$47,226,043
22578	Horace Mann Ins Co	\$243,569	0.01%	\$447,522,141	\$261,141,411	\$186,380,730
32786	Progressive Specialty Ins Co	\$242,361	0.01%	\$864,748,854	\$598,353,227	\$266,395,627
36161	Travelers Prop Cas Ins Co	\$239,548	0.01%	\$243,843,102	\$170,831,944	\$73,011,158
22608	National Specialty Ins Co	\$236,290	0.01%	\$78,539,999	\$32,521,095	\$46,018,904
19348	Capson Physicians Ins Co	\$233,118	0.01%	\$26,612,540	\$19,228,823	\$7,383,717
40444	Old Republic Surety Co	\$230,014	0.01%	\$115,080,869	\$56,733,465	\$58,347,404
11050	Amerisure Partners Ins Co	\$229,299	0.01%	\$78,548,917	\$54,664,767	\$23,884,150

Property and Casualty (Cont.)

NAIC	Company Name	AR Premium	Market Share	Assets	Liabilities	Capital & Surplus
28886	Transguard Ins Co Of Amer Inc	\$213,936	0.00%	\$237,941,125	\$113,668,808	\$124,272,317
12472	LUBA Cas Ins Co	\$210,086	0.00%	\$219,078,673	\$133,580,950	\$85,497,723
41424	Pennsylvania Manufacturers Ind Co	\$208,887	0.00%	\$193,933,250	\$124,438,889	\$69,494,361
36307	Gray Ins Co	\$203,043	0.00%	\$286,447,413	\$181,345,444	\$105,101,969
42579	Allied Prop & Cas Ins Co	\$201,369	0.00%	\$385,017,784	\$326,114,659	\$58,903,125
11206	Housing Enterprise Ins Co Inc	\$199,896	0.00%	\$71,328,367	\$38,828,765	\$32,499,602
30325	Zale Ind Co	\$197,568	0.00%	\$51,973,200	\$35,372,259	\$16,600,941
24724	First Natl Ins Co Of Amer	\$195,058	0.00%	\$55,524,996	\$143,452	\$55,381,544
10499	Corepointe Ins Co	\$192,534	0.00%	\$138,397,328	\$81,569,459	\$56,827,869
25984	Graphic Arts Mut Ins Co	\$192,405	0.00%	\$144,645,648	\$89,440,074	\$55,205,573
38300	Samsung Fire & Marine Ins Co Ltd	\$189,928	0.00%	\$215,390,223	\$166,633,119	\$48,757,104
10340	Stonington Ins Co	\$180,769	0.00%	\$137,773,325	\$102,753,335	\$35,019,989
35769	Lyndon Prop Ins Co	\$165,044	0.00%	\$364,333,982	\$209,349,449	\$154,984,533
11134	Rural Trust Ins Co	\$164,916	0.00%	\$17,935,211	\$5,351,290	\$12,583,921
12189	Oceanus Ins Co A RRG	\$163,771	0.00%	\$59,400,580	\$49,110,025	\$10,290,555
11579	Old Glory Ins Co	\$163,451	0.00%	\$21,864,375	\$12,331,160	\$9,533,214
41394	Benchmark Ins Co	\$160,971	0.00%	\$214,603,736	\$148,349,930	\$66,253,806
12718	Developers Surety & Ind Co	\$158,695	0.00%	\$138,772,561	\$48,765,013	\$90,007,548
29157	United WI Ins Co	\$158,018	0.00%	\$370,988,610	\$267,297,631	\$103,690,979
25976	Utica Mut Ins Co	\$157,557	0.00%	\$2,293,497,346	\$1,481,612,534	\$811,884,812
23353	Meridian Security Ins Co	\$151,582	0.00%	\$116,859,407	\$46,528,146	\$70,331,261
44130	Paratransit Ins Co Mut RRG	\$141,260	0.00%	\$25,160,084	\$12,546,497	\$12,613,587
21865	Associated Ind Corp	\$141,153	0.00%	\$110,810,969	\$23,712,572	\$87,098,397
13559	Municipal Assur Cor	\$135,028	0.00%	\$1,509,306,021	\$779,798,472	\$729,507,549
37001	ATX Premier Insurance Company	\$133,760	0.00%	\$9,545,781	\$4,875,577	\$4,670,204
10084	Title Industry Assur Co RRG	\$128,433	0.00%	\$6,565,671	\$2,156,146	\$4,409,525
23434	Middlesex Ins Co	\$126,987	0.00%	\$695,164,692	\$445,304,143	\$249,860,549
41491	Geico Cas Co	\$122,629	0.00%	\$2,605,875,836	\$1,676,099,469	\$929,776,368
10235	American Southern Ins Co	\$120,083	0.00%	\$108,857,171	\$70,548,864	\$38,308,307
13978	Florists Mut Ins Co	\$117,949	0.00%	\$125,488,701	\$101,835,916	\$23,652,785
16810	American Mercury Ins Co	\$115,759	0.00%	\$367,725,185	\$204,764,391	\$162,960,794
10020	United Educators Ins RRG Inc	\$113,639	0.00%	\$874,475,111	\$590,125,655	\$284,349,456
22748	Pacific Employers Ins Co	\$112,926	0.00%	\$3,541,625,095	\$2,301,252,609	\$1,240,372,486
13285	Allegheny Cas Co	\$108,224	0.00%	\$39,501,332	\$16,899,599	\$22,601,733
10127	Allied Ins Co of Amer	\$101,559	0.00%	\$29,867,101	\$15,836,548	\$14,030,553
31887	Coface N Amer Ins Co	\$98,255	0.00%	\$142,707,272	\$85,962,143	\$56,745,129
13126	Midwest Builders Cas Mut Co	\$97,482	0.00%	\$82,667,171	\$38,411,518	\$44,255,653
10476	STICO Mut Ins Co RRG	\$96,009	0.00%	\$24,475,591	\$12,830,020	\$11,645,571
11595	Merchants Natl Bonding Inc	\$94,424	0.00%	\$24,149,531	\$11,855,452	\$12,294,079
25422	Atradius Trade Credit Ins Co	\$92,432	0.00%	\$112,034,409	\$45,428,765	\$66,605,644
36927	Colony Specialty Ins Co	\$88,748	0.00%	\$64,128,165	\$43,944,756	\$20,183,410
35181	Executive Risk Ind Inc	\$87,340	0.00%	\$3,068,192,723	\$1,801,048,412	\$1,267,144,311
10671	The Gray Cas & Surety Co	\$84,838	0.00%	\$16,961,069	\$2,619,089	\$14,341,980
81108	United Security Hlth & Cas Ins Co	\$84,308	0.00%	\$3,007,535	\$1,000,713	\$2,006,822
12190	American Pet Ins Co	\$83,179	0.00%	\$43,490,151	\$17,422,239	\$26,067,913
34630	Oak River Ins Co	\$81,526	0.00%	\$594,700,423	\$394,268,711	\$200,431,712
10222	PACO Assur Co Inc	\$79,927	0.00%	\$70,323,273	\$36,824,393	\$33,498,880
27740	North Pointe Ins Co	\$79,782	0.00%	\$93,904,924	\$68,928,164	\$24,976,760
14026	Sunland RRG Inc	\$74,740	0.00%	\$4,098,750	\$2,794,935	\$1,303,815
12209	Restoration RRG Inc	\$72,927	0.00%	\$70,922,792	\$45,679,381	\$25,243,411
42390	Amguard Ins Co	\$69,535	0.00%	\$478,904,863	\$361,542,102	\$117,362,761
26797	Housing Authority RRG Inc	\$65,535	0.00%	\$311,786,413	\$119,533,577	\$192,252,836
19860	Argonaut Great Central Ins Co	\$63,616	0.00%	\$48,672,480	\$23,662,734	\$25,009,746
10212	Allmerica Fin Alliance Ins Co	\$62,214	0.00%	\$19,835,711	\$15,888	\$19,819,823

Property and Casualty (Cont.)

NAIC	Company Name	AR Premium	Market Share	Assets	Liabilities	Capital & Surplus
22730	Allied World Ins Co	\$61,958	0.00%	\$1,749,569,782	\$667,235,660	\$1,082,334,122
11967	General Star Natl Ins Co	\$60,011	0.00%	\$223,344,558	\$56,925,479	\$166,419,079
15679	National Fire & Ind Exch	\$55,776	0.00%	\$12,208,383	\$6,596,219	\$5,612,164
26581	Independence Amer Ins Co	\$52,523	0.00%	\$115,949,999	\$52,537,668	\$63,412,331
13792	New Home Warranty Ins Co a RRG	\$51,620	0.00%	\$18,597,799	\$12,328,883	\$6,268,916
11710	Allied Professionals Ins Co RRG	\$50,736	0.00%	\$47,362,507	\$27,844,846	\$19,517,661
35157	Fair Amer Ins & Reins Co	\$50,682	0.00%	\$256,925,777	\$15,102,362	\$241,823,415
13613	College RRG Inc	\$48,548	0.00%	\$23,119,128	\$13,444,028	\$9,675,100
41106	Triumphe Cas Co	\$47,743	0.00%	\$57,400,446	\$38,301,807	\$19,098,638
20370	AXIS Reins Co	\$47,656	0.00%	\$2,863,345,117	\$2,002,486,507	\$860,858,610
10113	Terra Ins Co RRG	\$46,291	0.00%	\$28,063,508	\$9,209,301	\$18,854,207
13177	ARCOA RRG Inc	\$45,101	0.00%	\$14,388,854	\$9,002,392	\$5,386,463
18708	Ambac Assur Corp	\$45,000	0.00%	\$4,824,375,838	\$4,199,580,526	\$624,795,312
12172	Claim Professionals Liab ins Co RRG	\$44,036	0.00%	\$3,967,331	\$1,560,708	\$2,406,623
31968	Merastar Ins Co	\$43,956	0.00%	\$32,242,201	\$20,803,758	\$11,438,443
40436	Stratford Ins Co	\$40,500	0.00%	\$147,750,259	\$64,718,424	\$83,031,834
13200	Universal Surety Of Amer	\$38,985	0.00%	\$15,935,326	\$17,279	\$15,918,047
30120	Znat Ins Co	\$38,055	0.00%	\$68,065,168	\$41,807,066	\$26,258,102
14990	Pennsylvania Natl Mut Cas Ins Co	\$37,284	0.00%	\$1,233,630,334	\$662,217,377	\$571,412,957
25186	Emc Prop & Cas Ins Co	\$36,430	0.00%	\$167,383,871	\$85,448,896	\$81,934,975
13722	Knightbrook Ins Co	\$36,283	0.00%	\$207,186,084	\$160,825,928	\$46,360,156
29742	Integon Natl Ins Co	\$36,032	0.00%	\$2,339,490,227	\$1,891,151,252	\$448,338,975
37206	Contractors Bonding & Ins Co	\$34,001	0.00%	\$203,141,328	\$88,879,757	\$114,261,571
20702	Ace Fire Underwriters Ins Co	\$33,385	0.00%	\$109,350,860	\$34,371,579	\$74,979,281
24791	St Paul Mercury Ins Co	\$33,177	0.00%	\$347,256,615	\$222,311,330	\$124,945,285
24775	St Paul Guardian Ins Co	\$33,098	0.00%	\$79,061,628	\$53,850,298	\$25,211,330
10232	American Assoc Of Othodontists RRG	\$29,124	0.00%	\$43,844,187	\$31,301,855	\$12,542,332
15474	National Lloyds Ins Co	\$28,122	0.00%	\$229,285,956	\$107,536,075	\$121,749,881
14190	OBI Natl Ins Co	\$27,653	0.00%	\$13,139,343	\$23,339	\$13,116,004
37710	First Amer Prop & Cas Ins Co	\$26,036	0.00%	\$97,089,426	\$56,441,235	\$40,648,191
26042	Wausau Underwriters Ins Co	\$23,686	0.00%	\$86,245,438	\$19,414,417	\$66,831,021
11267	Security Amer RRG Inc	\$23,626	0.00%	\$5,398,329	\$2,695,370	\$2,702,959
35963	AF&L Ins Co	\$23,541	0.00%	\$145,630,896	\$145,625,827	\$5,069
11153	Titan Ins Co Inc RRG	\$22,852	0.00%	\$53,830,658	\$13,731,025	\$40,099,633
10754	Spirit Mountain Ins Co RRG Inc	\$22,749	0.00%	\$6,553,981	\$2,959,541	\$3,594,440
12294	Southwest Marine & Gen Ins Co	\$22,532	0.00%	\$136,406,728	\$74,639,027	\$61,767,701
42889	Victoria Fire & Cas Co	\$22,501	0.00%	\$154,039,437	\$112,497,007	\$41,542,430
24678	Arrowood Ind Co	\$22,083	0.00%	\$1,353,999,436	\$1,123,164,346	\$230,835,089
14366	NASW RRG Inc	\$21,840	0.00%	\$6,496,012	\$1,671,425	\$4,824,587
10758	Colonial Surety Co	\$19,483	0.00%	\$54,156,183	\$22,534,446	\$31,621,737
10003	Excess Share Ins Corp	\$19,363	0.00%	\$51,676,430	\$30,641,620	\$21,034,810
13720	CrossFit RRG Inc	\$19,054	0.00%	\$6,433,486	\$3,736,022	\$2,697,464
10234	National Serv Contract Ins Co RRG	\$18,931	0.00%	\$13,909,097	\$1,896,769	\$12,012,328
11197	National Independent Truckers IC RRG	\$18,660	0.00%	\$12,729,787	\$5,406,368	\$7,323,419
11673	Redwood Fire & Cas Ins Co	\$17,903	0.00%	\$1,427,958,085	\$875,176,108	\$552,781,977
10801	Fortress Ins Co	\$17,778	0.00%	\$132,177,530	\$71,166,930	\$61,010,600
10164	Cpa Mut Ins Co Of Amer RRG	\$17,735	0.00%	\$20,285,828	\$12,074,521	\$8,211,306
11825	Care RRG Inc	\$17,563	0.00%	\$20,188,855	\$15,815,080	\$4,373,775
24031	Northland Cas Co	\$17,070	0.00%	\$107,733,718	\$70,693,643	\$37,040,075
14788	NGM Ins Co	\$16,833	0.00%	\$2,344,819,808	\$1,324,181,771	\$1,020,638,037
34924	Dakota Truck Underwriters	\$16,832	0.00%	\$109,291,792	\$65,617,607	\$43,674,185
13580	ARISE Boiler Inspection & Ins Co RRG	\$16,495	0.00%	\$3,625,512	\$724,615	\$2,900,897
10052	Chubb Natl Ins Co	\$15,852	0.00%	\$329,883,937	\$177,531,042	\$152,352,895

Property and Casualty (Cont.)

NAIC	Company Name	AR Premium	Market Share	Assets	Liabilities	Capital & Surplus
37850	Pacific Specialty Ins Co	\$15,353	0.00%	\$304,904,395	\$171,941,258	\$132,963,137
11835	PartnerRe Amer Ins Co	\$15,180	0.00%	\$375,828,870	\$247,475,251	\$128,353,619
15563	SeaBright Ins Co	\$13,909	0.00%	\$42,082,434	\$16,534,663	\$25,547,771
32450	ALPS Prop & Cas Ins Co	\$13,172	0.00%	\$111,649,227	\$74,503,339	\$37,145,888
20338	Palomar Specialty Ins Co	\$12,587	0.00%	\$103,558,089	\$33,935,895	\$69,622,194
14402	Bearing Midwest Cas Co	\$11,774	0.00%	\$6,479,062	\$795,877	\$5,683,185
37060	Old United Cas Co	\$10,763	0.00%	\$540,090,234	\$356,035,970	\$184,054,264
36765	Gulf Guar Ins Co	\$10,640	0.00%	\$4,373,993	\$600,629	\$3,773,364
29033	Atain Ins Co	\$10,542	0.00%	\$77,180,274	\$29,419,708	\$47,760,566
24376	Spinnaker Ins Co	\$10,388	0.00%	\$33,904,826	\$720,729	\$33,184,097
40517	Advantage Workers Comp Ins Co	\$10,385	0.00%	\$110,483,207	\$57,654,183	\$52,829,024
36153	Aetna Ins Co of CT	\$9,025	0.00%	\$15,849,334	\$547,897	\$15,301,437
39322	General Security Natl Ins Co	\$8,948	0.00%	\$334,433,840	\$209,903,981	\$124,529,859
40169	Metropolitan Cas Ins Co	\$8,740	0.00%	\$203,694,551	\$149,251,756	\$54,442,795
26905	Century Natl Ins Co	\$8,494	0.00%	\$594,055,305	\$226,511,831	\$367,543,474
36340	Camico Mut Ins Co	\$8,119	0.00%	\$87,246,141	\$46,948,540	\$40,297,601
19992	American Select Ins Co	\$7,913	0.00%	\$234,408,823	\$131,518,179	\$102,890,644
22713	Insurance Co of N Amer	\$7,889	0.00%	\$883,791,037	\$650,227,492	\$233,563,545
12839	MidSouth Mut Ins Co	\$7,811	0.00%	\$22,331,875	\$12,054,789	\$10,277,086
11030	Memco Ind Co	\$6,672	0.00%	\$385,855,775	\$260,213,112	\$125,642,663
21075	Financial Amer Prop & Cas Ins Co	\$6,519	0.00%	\$15,556,439	\$6,589,154	\$8,967,285
11123	Safety First Ins Co	\$6,152	0.00%	\$69,026,117	\$3,932,423	\$65,093,694
16667	United Guar Residential Ins Co of NC	\$6,022	0.00%	\$477,199,177	\$27,322,813	\$449,876,364
26869	Silver Oak Cas Inc	\$5,435	0.00%	\$230,381,978	\$135,812,243	\$94,569,735
14388	Cherokee Guar Co Inc a RRG	\$5,269	0.00%	\$14,828,416	\$11,443,841	\$3,384,575
27081	Bond Safeguard Ins Co	\$4,925	0.00%	\$82,879,301	\$46,817,454	\$36,061,847
36560	Service Ins Co	\$4,674	0.00%	\$49,346,837	\$12,026,494	\$37,320,343
11941	Green Hills Ins Co RRG	\$4,104	0.00%	\$13,048,161	\$7,715,617	\$5,332,544
22950	Acstar Ins Co	\$3,855	0.00%	\$57,071,327	\$30,726,940	\$26,344,387
32301	TNUS Ins Co	\$2,910	0.00%	\$62,453,581	\$7,196,359	\$55,257,222
13677	Affiliates Ins Recip a RRG	\$2,731	0.00%	\$6,435,849	\$1,374,381	\$5,061,468
24104	Ohio Farmers Ins Co	\$2,700	0.00%	\$2,701,072,489	\$703,930,939	\$1,997,141,550
14702	Eastguard Ins Co	\$2,577	0.00%	\$109,330,036	\$72,953,112	\$36,376,924
13242	Titan Ind Co	\$2,472	0.00%	\$235,864,879	\$79,174,529	\$156,690,350
26069	Wausau Business Ins Co	\$2,411	0.00%	\$35,226,955	\$6,592,113	\$28,634,842
35505	Rockwood Cas Ins Co	\$2,225	0.00%	\$248,358,890	\$159,496,756	\$88,862,134
30279	Boston Ind Co Inc	\$2,143	0.00%	\$7,827,511	\$2,802,020	\$5,025,491
27138	Midvale Ind Co	\$2,076	0.00%	\$13,379,043	\$591,302	\$12,787,741
28860	Clear Blue Ins Co	\$1,860	0.00%	\$18,019,795	\$7,275	\$18,012,520
20796	21st Century Premier Ins Co	\$1,742	0.00%	\$282,159,674	\$2,646,825	\$279,512,848
40940	Western Pacific Mut Ins Co RRG	\$1,590	0.00%	\$135,684,762	\$27,900,787	\$107,783,975
25933	Universal Surety Co	\$1,587	0.00%	\$187,583,720	\$50,178,071	\$137,405,649
12982	Great Plains Cas Inc	\$1,270	0.00%	\$17,777,164	\$1,916,436	\$15,860,728
32859	Penn Amer Ins Co	\$1,094	0.00%	\$155,000,074	\$71,856,341	\$83,143,733
12171	AmeriGuard RRG Inc	\$1,089	0.00%	\$13,771,949	\$5,880,760	\$7,891,189
11145	Golden Ins Co RRG	\$1,052	0.00%	\$11,492,968	\$7,946,679	\$3,546,289
26999	United Guar Mortgage Ind Co	\$933	0.00%	\$439,491,919	\$155,582,797	\$283,909,122
20621	Lamorak Ins Co	\$852	0.00%	\$26,420,243	\$3,111,205	\$23,309,038
19356	Maryland Cas Co	\$674	0.00%	\$165,841,305	\$10,707,606	\$155,133,699
37940	Lexington Natl Ins Corp	\$623	0.00%	\$55,732,022	\$38,821,500	\$16,910,522
31453	Financial Pacific Ins Co	\$549	0.00%	\$227,473,542	\$125,422,633	\$102,050,909
11114	St Charles Ins Co RRG	\$540	0.00%	\$13,869,908	\$1,827,997	\$12,041,911
43273	Insurors Ind Co	\$500	0.00%	\$28,245,738	\$13,945,323	\$14,300,415

Property and Casualty (Cont.)

NAIC	Company Name	AR Premium	Market Share	Assets	Liabilities	Capital & Surplus
12934	Academic Medical Professionals Ins E	\$496	0.00%	\$3,698,956	\$1,098,085	\$2,600,871
14265	Indiana Lumbermens Mut Ins Co	\$461	0.00%	\$52,156,958	\$37,035,297	\$15,121,661
17965	American Sentinel Ins Co	\$112	0.00%	\$32,297,640	\$16,479,388	\$15,818,252
37621	Toyota Motor Ins Co	\$96	0.00%	\$493,812,006	\$264,702,227	\$229,109,779
13019	Eastern Advantage Assur Co	\$57	0.00%	\$44,454,983	\$30,176,704	\$14,278,280
34738	Arag Ins Co	\$31	0.00%	\$70,631,882	\$17,336,491	\$53,295,391
	TOTAL	\$4,572,549,185	100.00%			

Title

NAIC	Company Name	AR Premium	Market Share	Assets	Liabilities	Capital & Surplus
50814	First Amer Title Ins Co	\$10,777,228	21.12%	\$2,280,827,645	\$1,177,052,908	\$1,103,774,737
50229	Chicago Title Ins Co	\$10,126,046	19.84%	\$1,860,745,900	\$914,570,850	\$946,175,050
51586	Fidelity Natl Title Ins Co	\$9,118,708	17.87%	\$1,251,063,350	\$813,686,006	\$437,377,344
50520	Old Republic Natl Title Ins Co	\$8,634,340	16.92%	\$1,085,694,768	\$628,322,329	\$457,372,439
50121	Stewart Title Guar Co	\$8,369,851	16.40%	\$1,042,433,700	\$540,634,429	\$501,799,271
12522	Agents Natl Title Ins Co	\$1,404,050	2.75%	\$9,011,719	\$5,686,102	\$3,325,617
50784	Security Title Guarantee Corp Baltim	\$1,110,965	2.18%	\$15,735,280	\$12,069,440	\$3,665,840
50083	Commonwealth Land Title Ins Co	\$774,259	1.52%	\$556,835,889	\$314,774,040	\$242,061,849
51152	WFG Natl Title Ins Co	\$566,947	1.11%	\$96,378,696	\$71,838,597	\$24,540,099
51411	American Guar Title Ins Co	\$93,905	0.18%	\$34,038,950	\$9,950,625	\$24,088,325
50050	Westcor Land Title Ins Co	\$27,015	0.05%	\$105,685,432	\$73,090,944	\$32,594,488
50002	Land Title Ins Corp	\$18,891	0.04%	\$12,248,223	\$5,303,993	\$6,944,230
51632	EnTitle Ins Co	\$5,624	0.01%	\$16,566,511	\$7,189,303	\$9,377,208
51020	National Title Ins Of NY Inc	\$655	0.00%	\$123,538,574	\$65,457,325	\$58,081,249
	TOTAL	\$51,028,484	100.00%			

For more information, visit:

www.insurance.arkansas.gov

Asa Hutchinson
Governor



Allen Kerr
Commissioner