



EXHIBIT D1

2024 Alzheimer's Disease Facts and Figures Report

David Cook
Director, Government Affairs



2024 ALZHEIMER'S DISEASE FACTS AND FIGURES

SPECIAL REPORT
MAPPING A BETTER
FUTURE FOR DEMENTIA
CARE NAVIGATION



ALZHEIMER'S ASSOCIATION



2024 ARKANSAS ALZHEIMER'S STATISTICS



PREVALENCE

Number of People Aged 65 and Older with Alzheimer's (2020) **60,400** % of Adults Over 65 with Alzheimer's **11.3%**



CAREGIVING

of Caregivers **155,000** Caregivers with Chronic Health Conditions **72.8%**
Total Hours of Unpaid Care **270,000,000** Caregivers with Depression **38.0%**
Total Value of Unpaid Care **\$4,448,000,000** Caregivers in Poor Physical Health **25.0%**



WORKFORCE

of Geriatricians in 2021 **55** # of Home Health and Personal Care Aides in 2020 **21,900**
Increase Needed to Meet 2050 Demand **143.6%** Increase Needed to Meet 2030 Demand **29.5%**



HEALTH CARE

of People in Hospice (2017) with a Primary Diagnosis of Dementia **3,133** Dementia Patient Hospital Readmission Rate (2018) **21.5%**
Hospice Residents with a Primary Diagnosis of Dementia **18%** Medicaid Costs of Caring for People with Alzheimer's (2020) **\$396M**
of Emergency Department Visits per 1,000 People with Dementia (2018) **1,530** Projected Change in Medicaid Costs from 2020 to 2025 **14.6%**

Per Capita Medicare Spending on People with Dementia in 2023 Dollars: **\$27,092**



MORTALITY

262.6% INCREASE IN ALZHEIMER'S DEATHS 2000-2021

Nearly

7 million Americans are living with Alzheimer's, and more than **11 million** provide their unpaid care. The cost of caring for those with Alzheimer's and other dementias

is estimated to total **\$360 billion** in 2024, increasing to nearly **\$1 trillion** (in today's dollars) by mid-century. For more information, view the **2024 Alzheimer's Disease Facts and Figures** report at alz.org/facts.

© 2024 Alzheimer's Association® All Rights Reserved. Alzheimer's Association is a non-for-profit 501(c)(3) organization.

of Deaths from Alzheimer's Disease (2021) **1,559**

Alzheimer's Disease as Cause of Death Rank **6th**

State Mortality Rate Rank **4th**

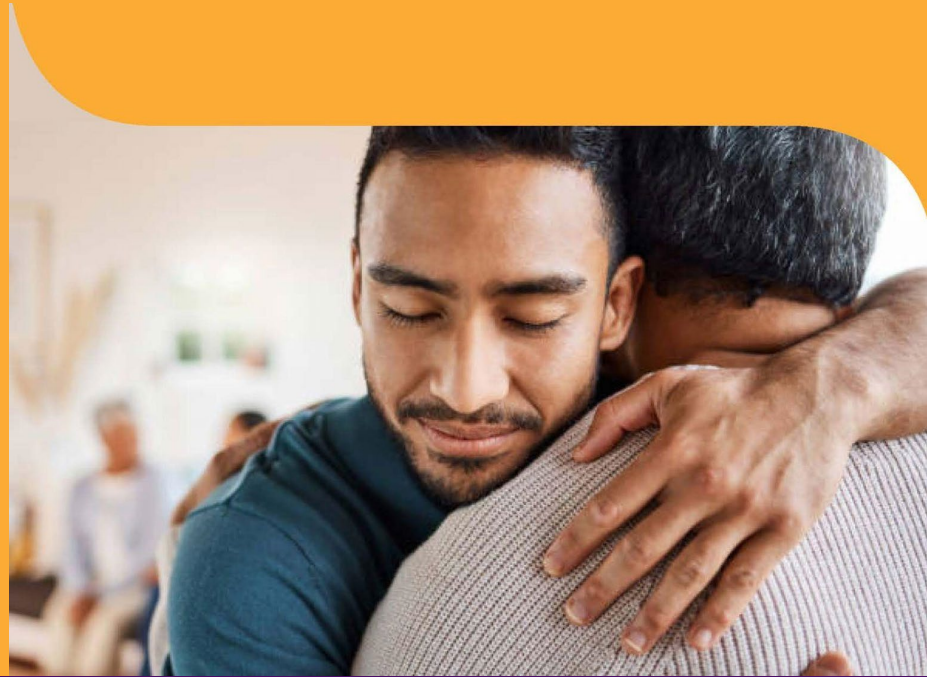


What We Learned...

- There are currently **6.9 MILLION** Americans 65+ living with Alzheimer's — a number expected to reach nearly 13 million by 2050.
- Total cost of care continues to be unsustainable, reaching **\$360 billion** — \$15 billion higher than a year ago.
- Deaths from Alzheimer's have **increased significantly** during the past two decades.
- The dementia care workforce, including dementia care specialists and direct care workers, **is not keeping pace** to meet future demands.
- Special report reveals **dementia caregivers want and need help** navigating current health care and support systems.
- Six in 10 health care workers (60%) say the U.S. health care system is **not effectively helping patients and their families navigate dementia care.**

Prevalence

An estimated 6.9 million seniors are living with Alzheimer's dementia.



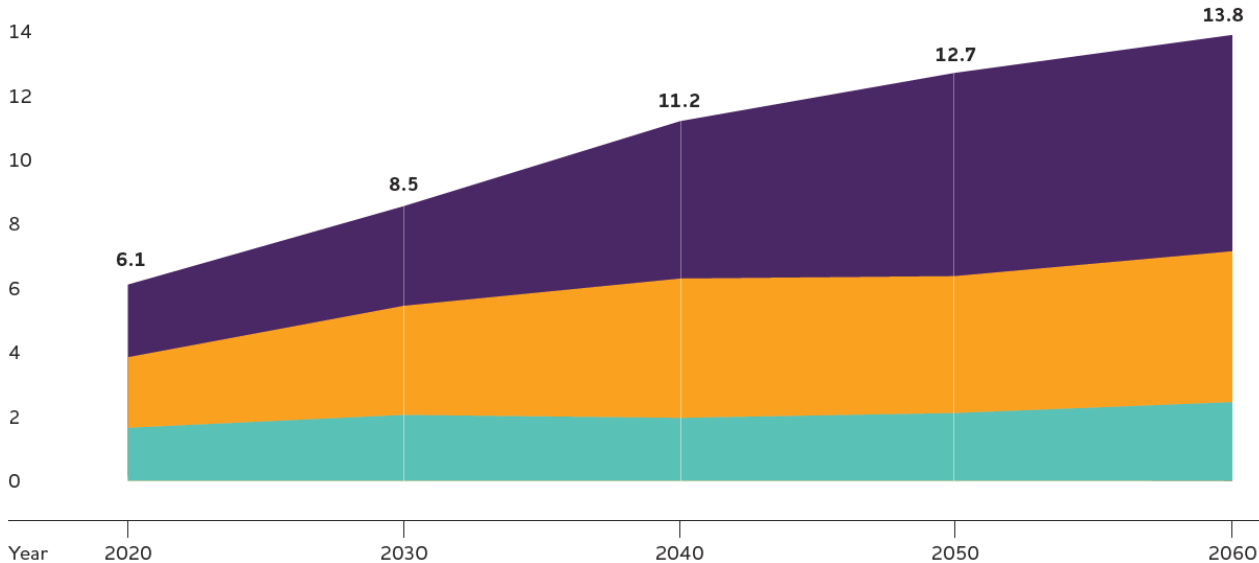
Projected Number of People Age 65 and Older (Total and by Age) in the U.S. Population with Alzheimer's Dementia, 2020 to 2060

Millions of people

■ Ages 65-74

■ Ages 75-84

■ Ages 85+



Created from data from Rajan et al.^{A5,216}

The number of Americans **65+** living with Alzheimer's is expected to **double by 2060.**

Gender and Racial Differences in Alzheimer's Prevalence



- Almost two-thirds of Americans with Alzheimer's are women.
- Older Blacks/African Americans and Hispanics/Latinos are disproportionately more likely than older non-Hispanic whites to have Alzheimer's or other dementias.
- Population-based studies for other racial/ethnic groups are needed.

Disease Prevalence by State

State	Number (in thousands)	%
Alabama	103.6	11.8
Alaska	8.4	8.8
Arizona	151.5	11
Arkansas	60.4	11.3
California	719.7	12
Colorado	90.8	10.4
Connecticut	76.8	11.9
Delaware	22.3	11.3

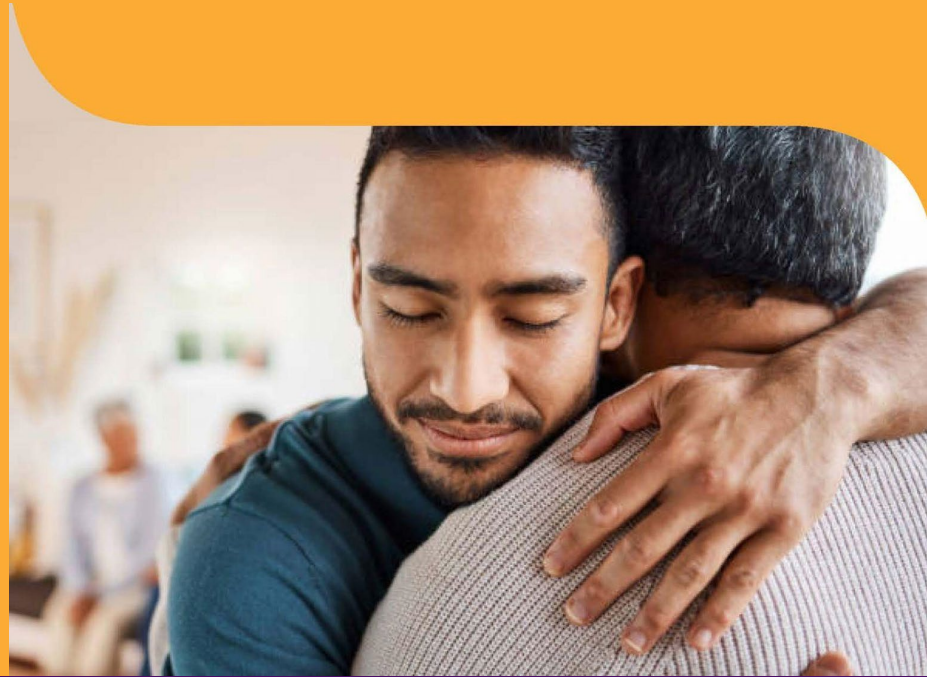
- State prevalence is for 2020 and provides updated data from study published last year.
- Report eliminates comparisons and % increase between 2020-2025.
- Report for first time includes Top 10 U.S. counties for prevalence* (study shared previously in conjunction with AAIC 23).

*Populations of 10,000 or more individuals age 65 or older.

Arkansas Prevalence

An estimated 60,400 seniors are living with Alzheimer's dementia.

11.3% of Adults Over 65 with Alzheimer's



Mortality and morbidity

Among people age 70, 61% of those with Alzheimer's dementia are expected to die before age 80 compared with 30% of people without Alzheimer's dementia.

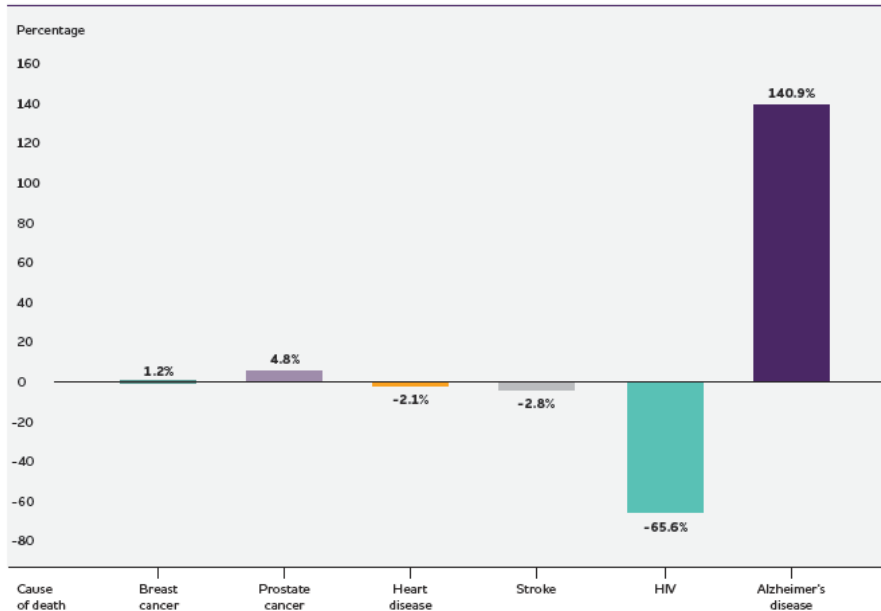


Between 2000-2021, Alzheimer's Deaths Increased by 141%

While deaths from the #1 cause of death (heart disease) **decreased**.

5th-leading cause of death among individuals age 65 and older in 2021.

Percentage Changes in Selected Causes of Death (All Ages) Between 2000 and 2021



Created from data from the National Center for Health Statistics.⁴⁰³⁻⁴¹²

The Progression of Alzheimer's is Slow and Burdensome



- Alzheimer's disease begins 20 years or more before the onset of symptoms.
- People age 65+ survive an average of **four to eight years** after a diagnosis, yet some live as long as **20 years**.
- At age 80, approximately 75% of people with Alzheimer's dementia **live in a nursing home** compared with only 4% of the general population age 80.
- The long duration of the disease **contributes significantly to the public health impact** of Alzheimer's.

Who Are the Alzheimer's Caregivers?

- **Two-thirds** of caregivers are women, and **one-third** are daughters.
- **About one in three** caregivers is age 65 or older.
- **More than half** of primary caregivers take care of their parents.
- **One quarter** of dementia caregivers are “sandwich generation” caregivers, taking care of both an aging parent and child.
- **41%** of caregivers have a household income of \$50,000 or less.
- **66%** live with the care recipient in the community.



Caregiving

More than 11 million Americans provide unpaid care for a family member or friend with dementia, a contribution to the nation valued at nearly \$350 billion.



Race, Ethnicity and Caregiving

- Two-thirds of caregivers are White. 10% are Black, 8% are Hispanic, and 5% are Asian American. The remaining 10% represent a variety of other racial/ethnic groups.
- Black caregivers more likely to provide more than 40 hours of care per week than white caregivers (54.3% versus 38.6%). Also more likely to care for someone with dementia (31.7% versus 11.9%) than White caregivers.
- Black dementia caregivers — 69% less likely to use respite services compared with white caregivers.
- Hispanic, Black, and Asian American dementia caregivers indicate greater care demands, less outside help/formal service use, and greater depression when compared with white caregivers.

State Caregiver Health Data

Percentage of Dementia Caregivers Reporting Health Conditions by State, 2016-2022

State	Percentage Reporting at Least One Chronic Condition	Percentage Reporting Depression	Percentage Reporting Frequent Poor Physical Health	State	Percentage Reporting at Least One Chronic Condition	Percentage Reporting Depression	Percentage Reporting Frequent Poor Physical Health
Alabama	57.5	30.9	15.0	Montana*	56.9	22.8	†
Alaska	53.7	27.7	15.2	Nebraska	57.6	25.4	13.2
Arizona	66.7	27.7	15.5	Nevada	54.2	31.1	†
Arkansas	72.8	38.0	25.0	New Hampshire	66.2	28.4	14.7
California	61.0	18.6	13.1	New Jersey	62.3	27.9	12.8
Colorado	58.0	36.7	15.5	New Mexico	64.8	31.3	12.6
Connecticut	64.0	27.9	9.4	New York	59.0	24.7	12.0
Delaware	61.8	23.3	†	North Carolina	58.8	41.0	18.1
District of Columbia*	65.1	†	†	North Dakota	60.1	30.4	8.6
Florida	66.4	28.6	13.6	Ohio	63.7	27.8	17.4
Georgia	64.9	33.2	15.1	Oklahoma	68.2	39.6	17.2
Hawaii	49.6	16.5	8.1	Oregon	57.4	33.6	8.5

- Arkansas is one of 14 states with updated BRFSS caregiver health data.

Arkansas Caregiving

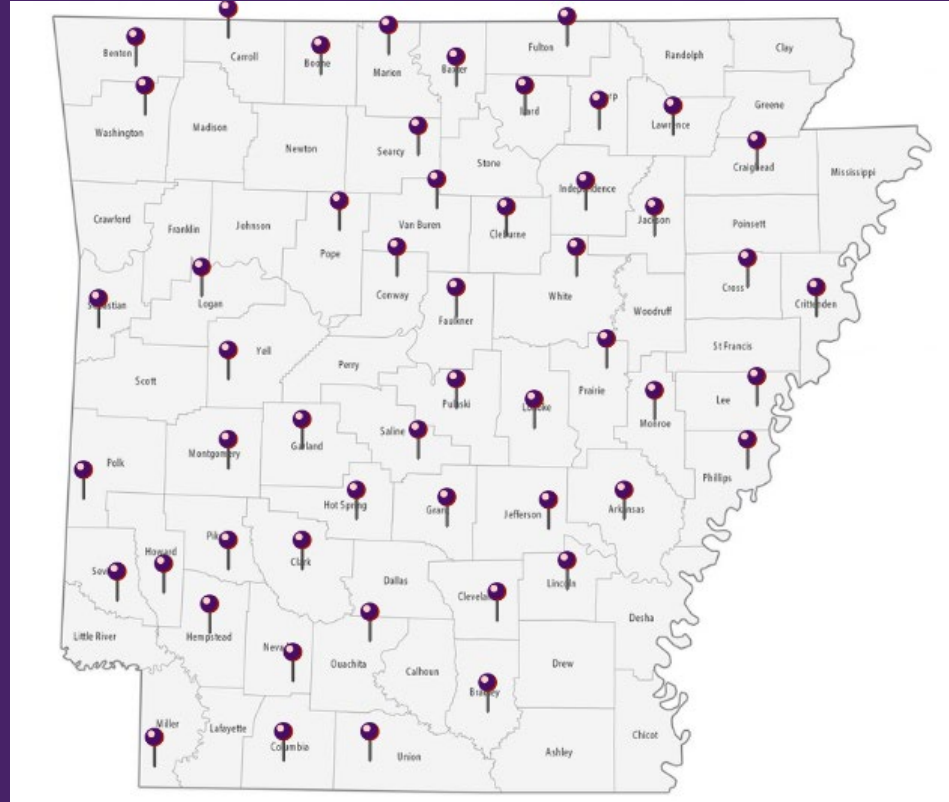
More than 155 thousand Arkansans provided 270 million hours of unpaid care for a family member or friend with dementia, a contribution to the state valued at \$4.448 billion.



Arkansas Dementia Caregiver Respite Grant Program

- \$200k Annual funding
- Funding depleted by March
- Majority of Grant Recipients in Metro's
- 89% of grant recipients are not Medicaid eligible
- Access issues in rural areas

**Preliminary findings based on 23-24 data collected by Alzheimer's Arkansas*



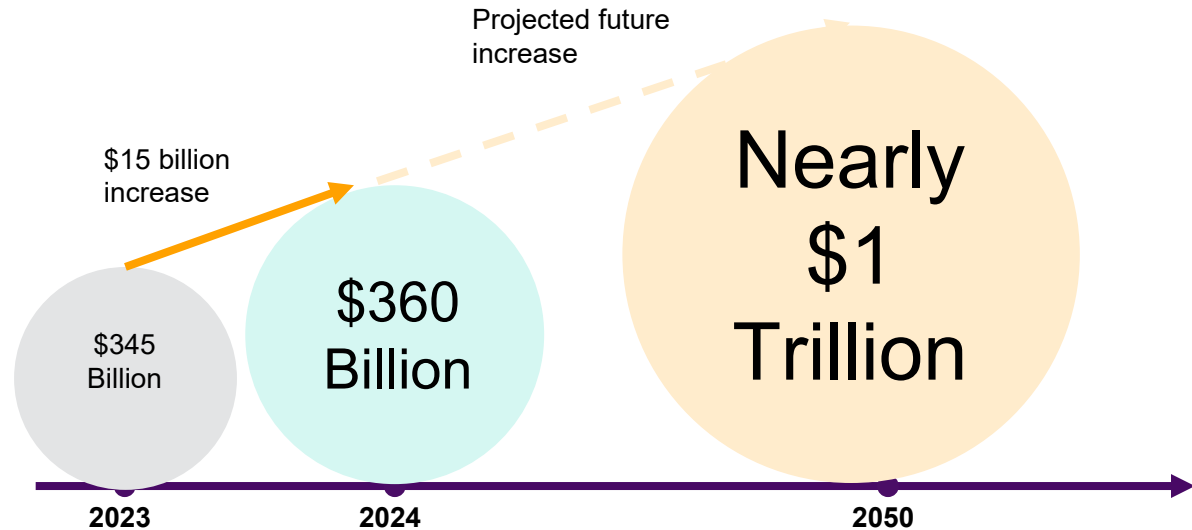
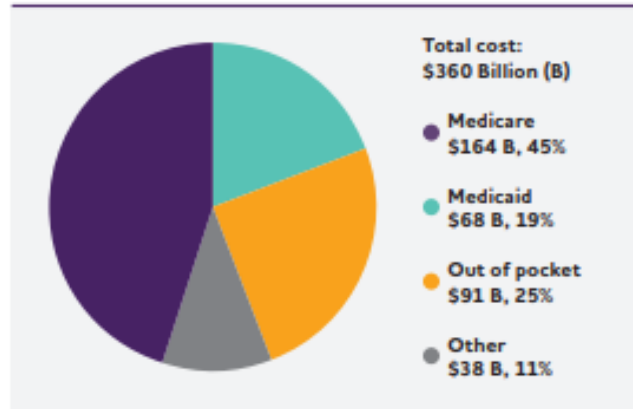
Use and costs of Health care, Long-Term Care and Hospice

In 2024, health and long-term costs for people living with Alzheimer's and other dementias are projected to reach \$360 billion.



Alzheimer's is One of the Costliest Conditions to Society and the U.S. Economy

Distribution of Aggregate Costs of Care by Payment Source for Americans Age 65 and Older with Alzheimer's or Other Dementias, 2024*



Workforce

More than 1 million additional direct care workers will be needed between 2021 and 2031 - more new workers than in any other single occupation in the United States.



Despite Growth, Direct Care Workforce Shortages Remain Significant

- Direct care workers **play a vital role** in caring for people living with dementia in private homes, adult day services, residential care, skilled nursing homes and other settings.
- Between 2012 and 2022, direct care workers **increased from 3.2 million to 4.8 million**.
- Job growth reflects preference for “aging in place” and public policies expanding access to home and community-based services.
- Although sizable, these employment projections fall short of true workforce demand.
 - Turnover rates remain high — estimated at **77%** annually for direct care workers and **99%** for nursing assistants in nursing homes.
 - To fill the service gaps, Arkansas will need to increase its home health and personal care aid workforce by 29.5% by 2030 (21,900 -> 28,350)

Lack of Dementia Care Specialists

- **55% of PCPs** caring for people living with Alzheimer's report there are not enough dementia care specialists in their communities.
- **Arkansas is one of 20 states** that have been termed “dementia neurology deserts.”
- **Arkansas** will need to increase the number of practicing geriatricians by 143.5% to care for those projected to have Alzheimer's dementia in 2050.

Special Report

Mapping a Better Future for Dementia Care Navigation



What We Did

- Conducted two nationwide surveys of U.S. dementia caregivers (1,500+) and health care workers (1,200+) most likely to provide care navigation services, largely nurses, social/community health workers.
- Survey of dementia CGs included responses from Asian, Black, Hispanic, Native and White Americans.
- Surveys examined several issues, including:
 - ✓ CGs/HCWs experience, exposure and attitudes on dementia care navigation (DCN).
 - ✓ DCN services and supports provided/needed.
 - ✓ Perceived benefits of DCN for both people living with dementia and their caregivers.
 - ✓ Barriers to dementia care navigation.

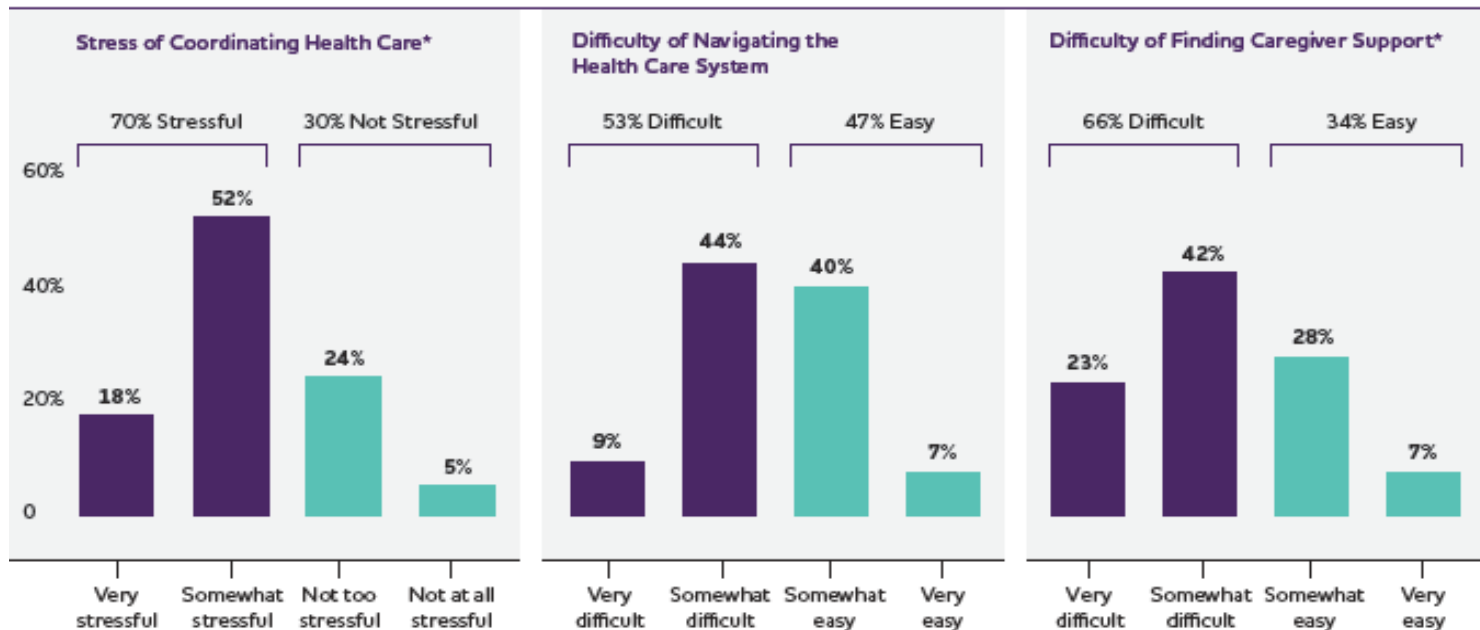
Key Takeaways: Dementia Caregiver Survey

- Dementia caregivers want and need help navigating the current health care system. **70% say care coordination is stressful.**
- **Cost of care** and **care coordination** are top stressors for dementia care caregivers.
- The vast majority of dementia caregivers – **97%** – say **having navigation support would be helpful.**
- More than 4 in 5 dementia caregivers – **85%** – say having access to a care navigator would influence their choice of provider.

Key Takeaways: Health Care Worker Survey

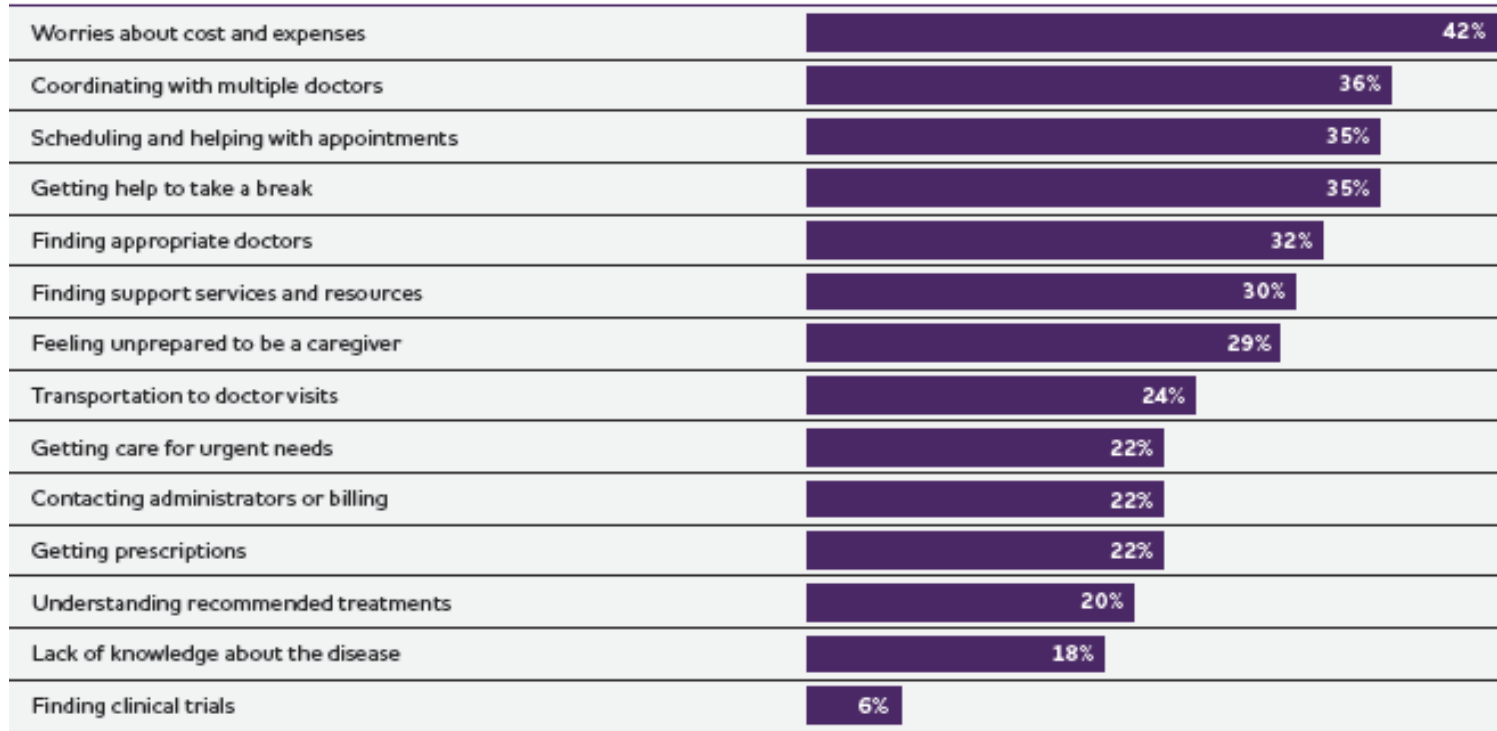
- **60%** of workers surveyed say the current health care system is **not effectively helping people living with dementia** and their caregivers navigate dementia care.
- Nearly half of these health care workers (**46%**) say their employers' practices and hospitals do not have a clearly defined process **for care coordination and clinical pathways** for people with MCI, Alzheimer's disease or related dementias.
- While many of these workers are helping dementia caregivers address current challenges -- **75%** of health care workers assisting dementia caregivers say they **have no formal dementia care training**.

Difficulties and Stressors Dementia Caregivers Experience



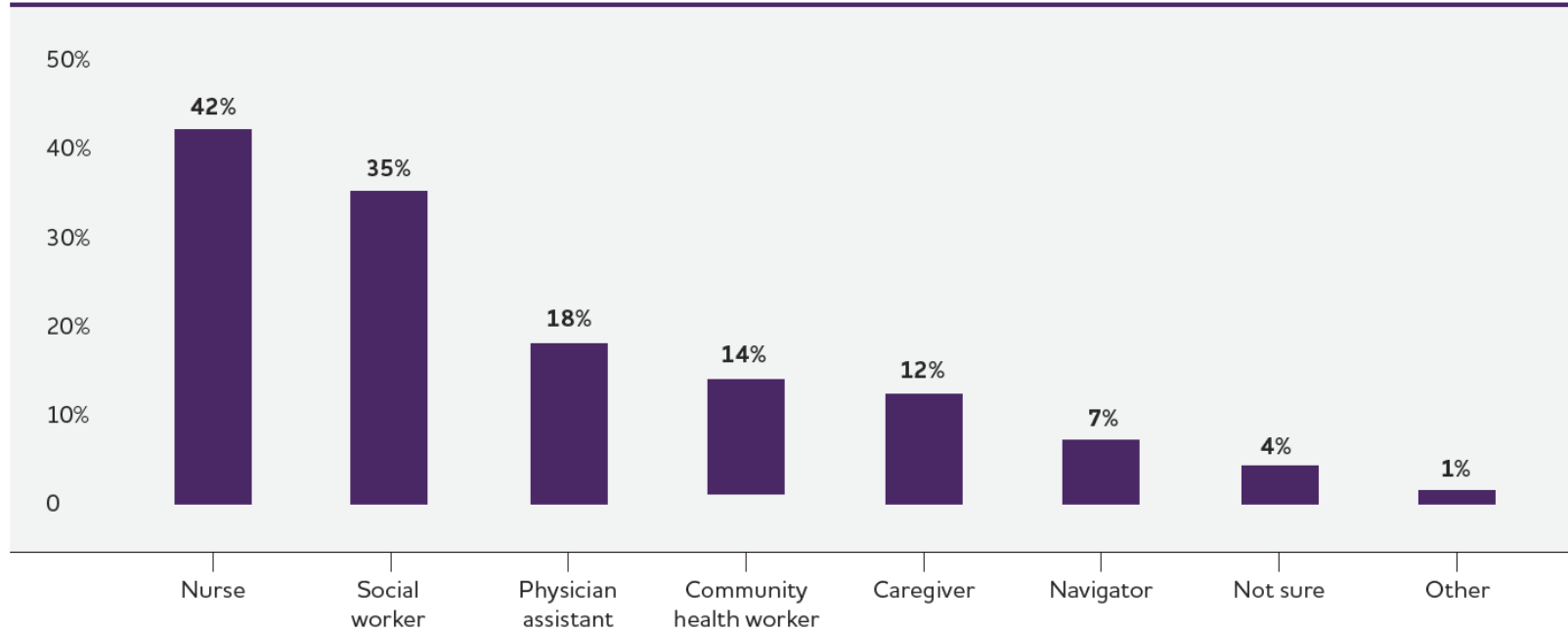
*Percentages of bars may not total the percentages above due to rounding.

Top Stressors for Getting Dementia Care

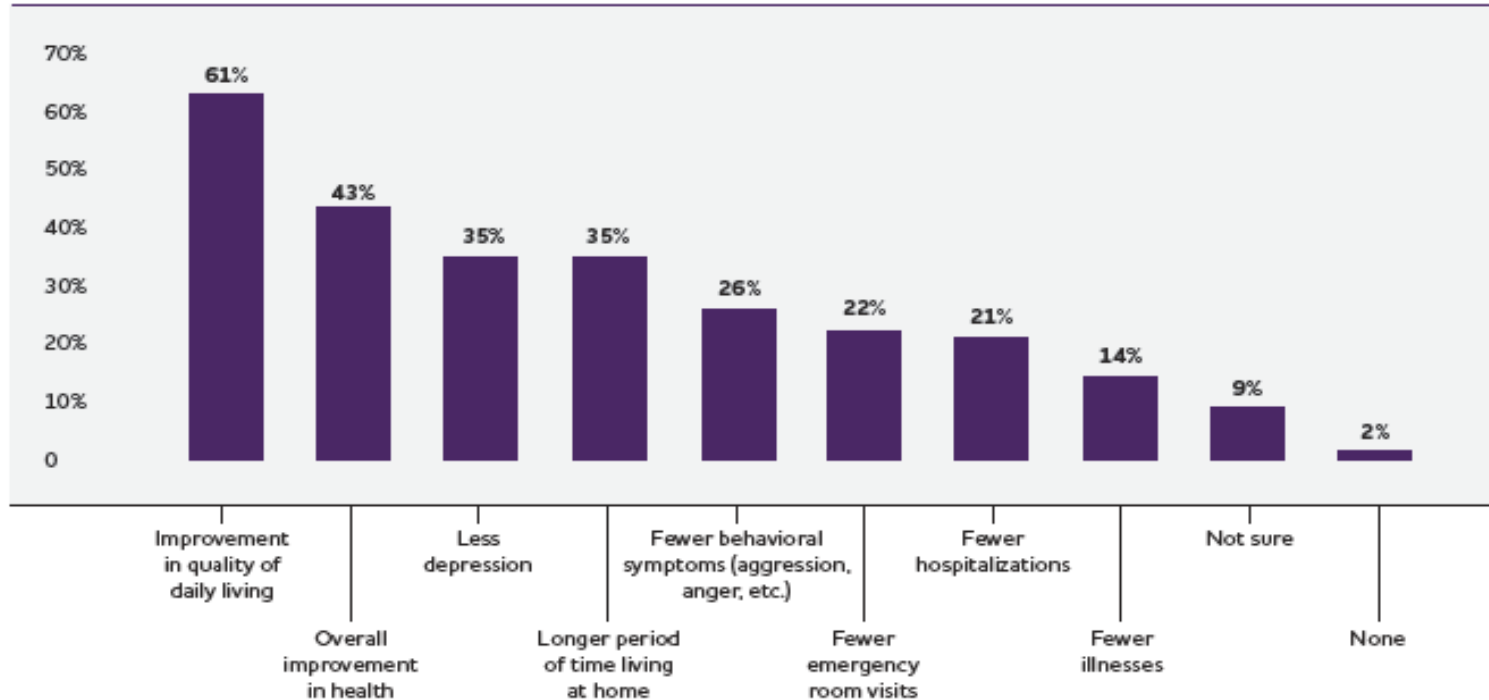


Health care workers most likely to provide navigator-type support and services

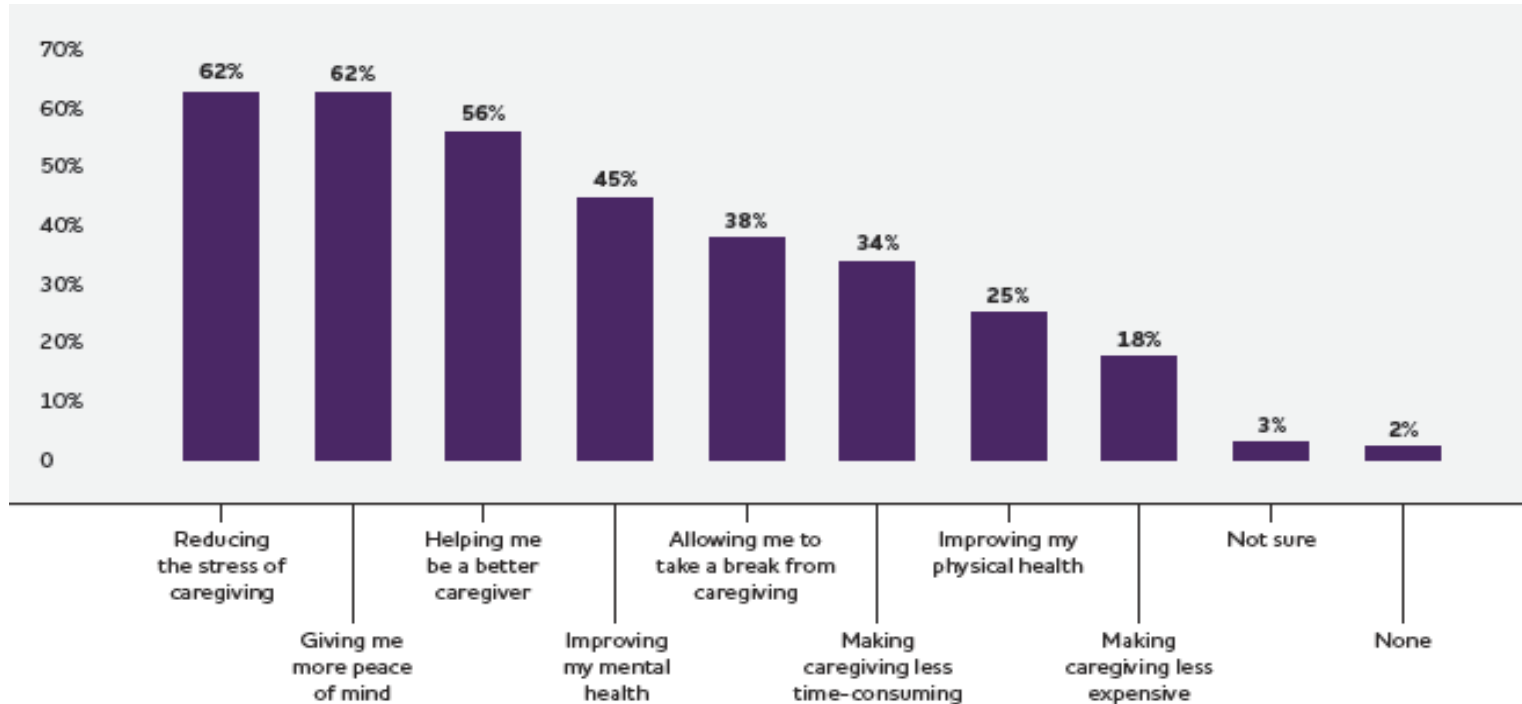
Navigator's Professional Role



Anticipated Outcomes for Care Recipients Receiving Care Navigation

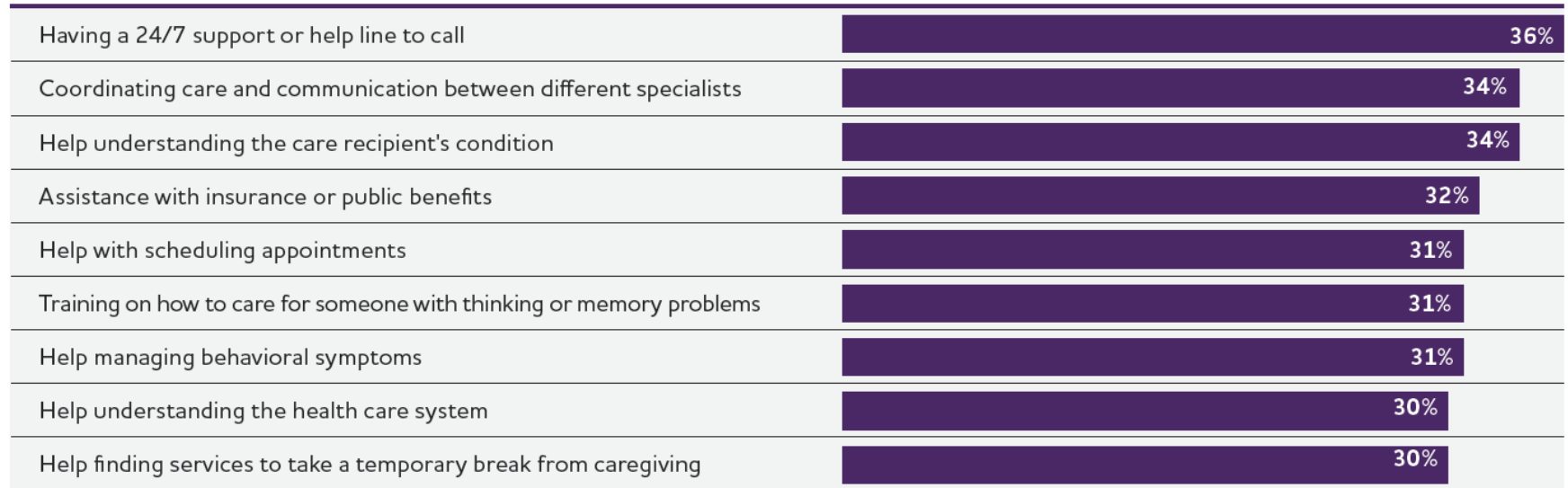


Anticipated Outcomes for Dementia Caregivers Receiving Care Navigation

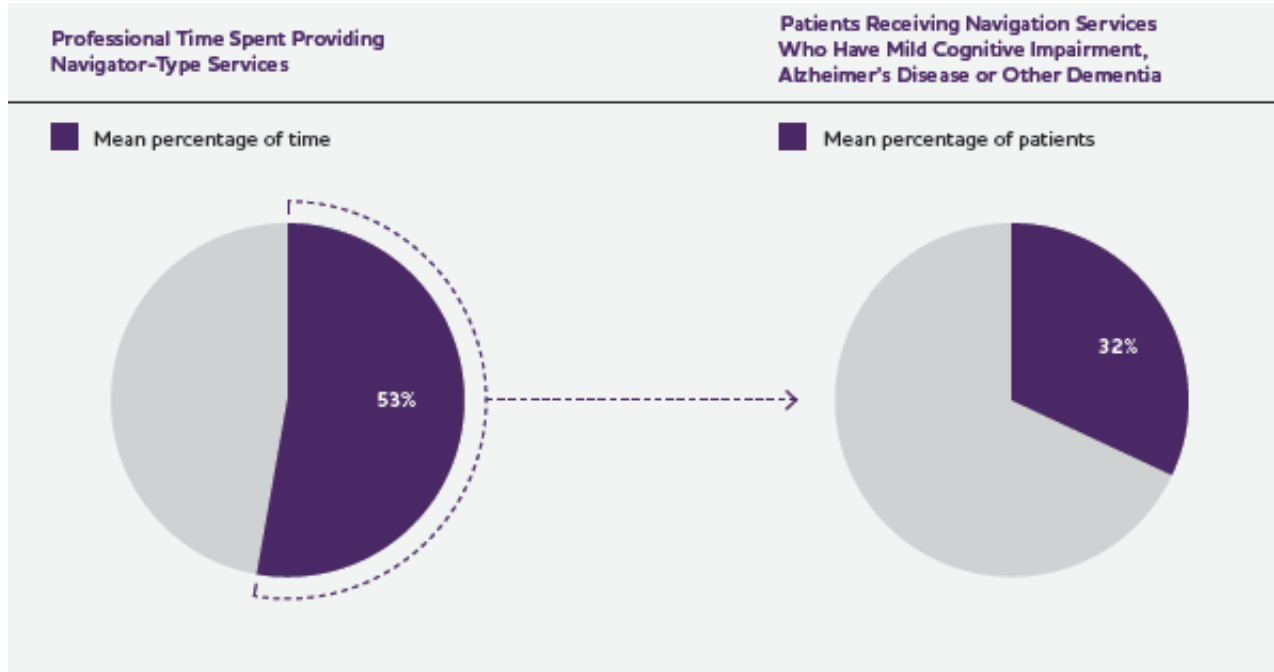


Navigation services dementia caregivers view most valuable

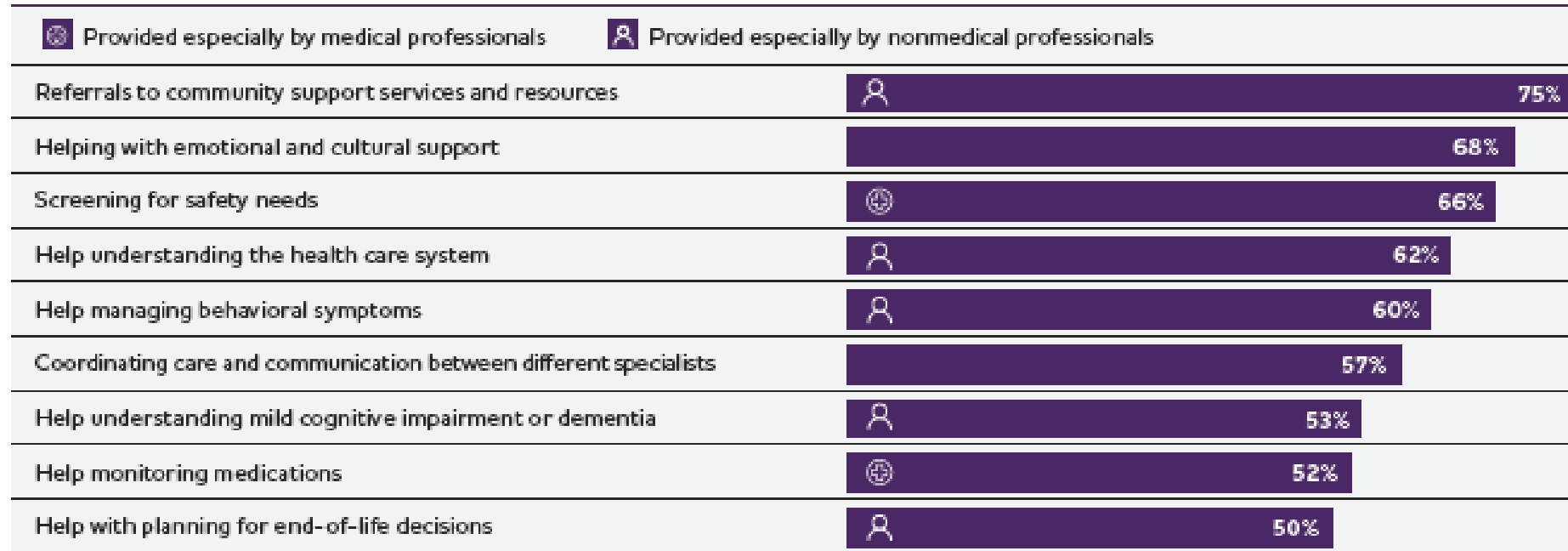
Care Navigator Services That Would Be Valuable to Dementia Caregivers



Time Spent on Navigator-Type Services and % of Patients with Cognitive Issues

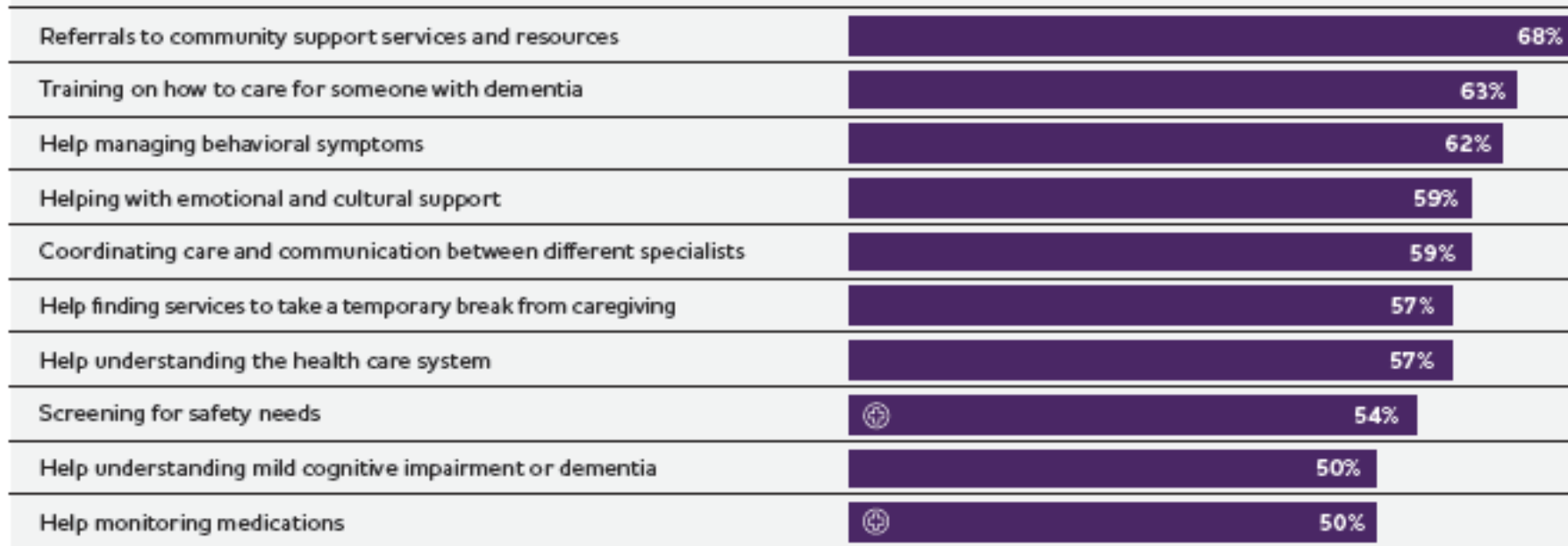


Services Provided That Support Dementia Care for Patients and Their Families

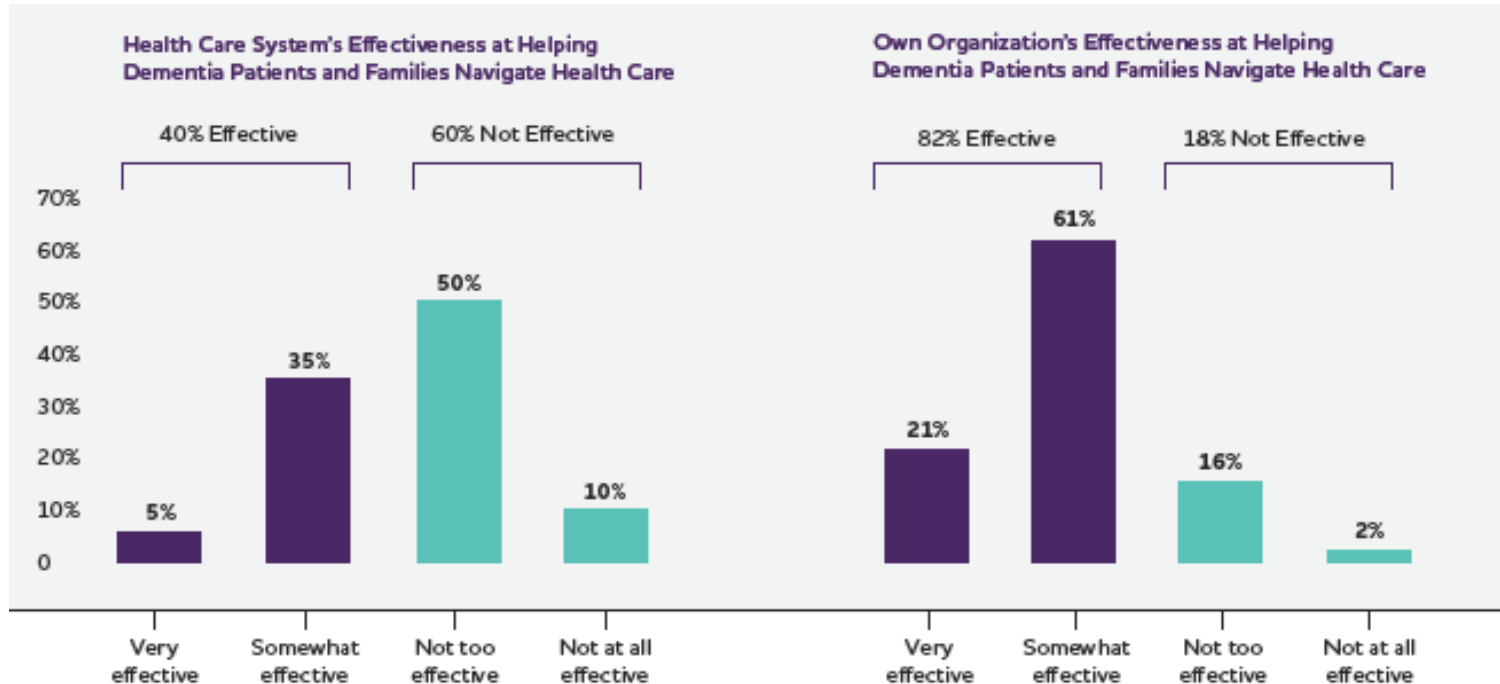


Most Valuable Services in Supporting Dementia Care for Patients and Their Families

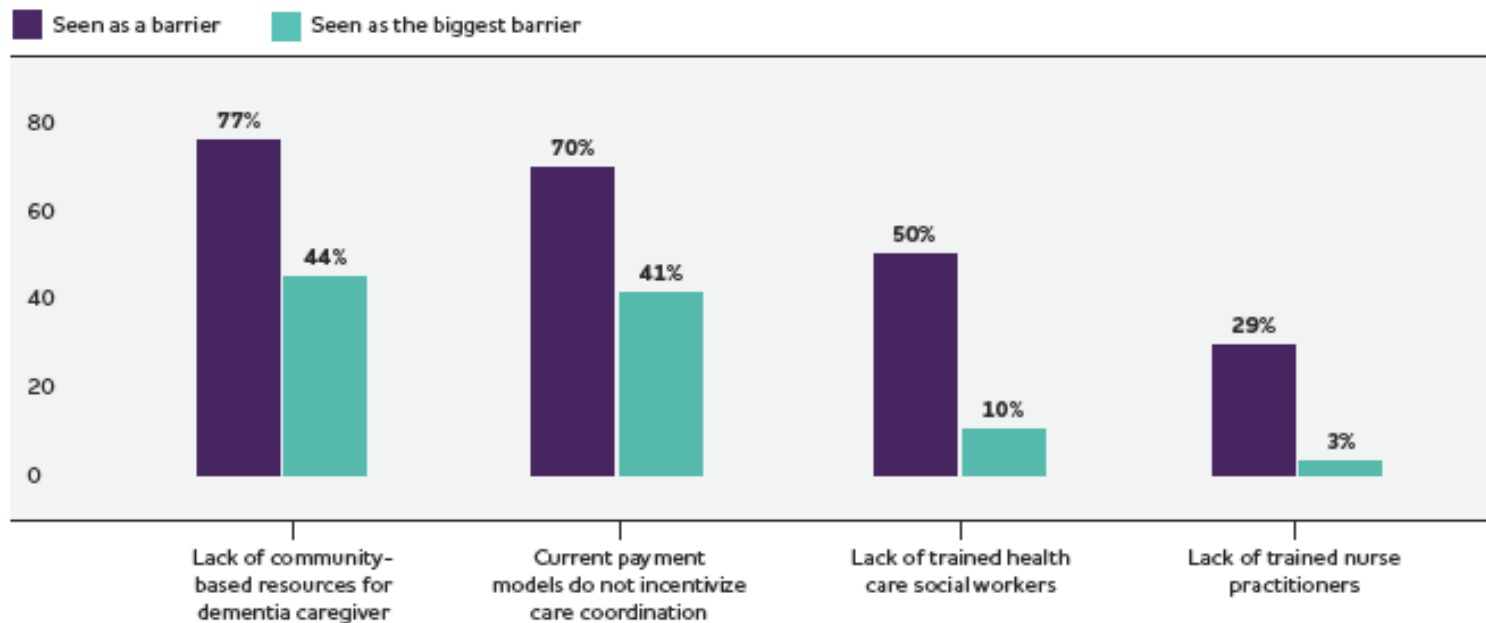
 Seen as especially important by medical professionals



Health Care Workers' Views on the Effectiveness of Dementia Care Navigation



Barriers to Dementia Care Navigation





In Summary

- The *2024 Facts and Figures* special report offers deeper insights from dementia caregivers and health care workers about the current state of dementia care navigation (DCN).
- Studies show effective DCN can improve health outcomes, reduce costs and lessen caregiver stress.
- Dementia caregivers would welcome DCN support and believe it offers benefits for both PWDs and caregivers.
- Formalized DCN programs are not widespread currently, although upcoming CMS pilot program (GUIDE) could help build momentum for change.
- We want our report will be a catalyst for change – encouraging health systems and practices to enhance dementia care navigation to help people living with dementia and their caregivers.