

# EXHIBIT D



## The Ginny & Bob Shell Alzheimer's Center

PARKWAY VILLAGE

A Baptist Health Community



# History

- ❖ Shell Family Legacy
- ❖ Development
  - ❖ Purposely designed
  - ❖ First Free-standing Memory Care in Arkansas
  - ❖ Subsidiary of Baptist Health





# ***Mission Statement and Philosophy***

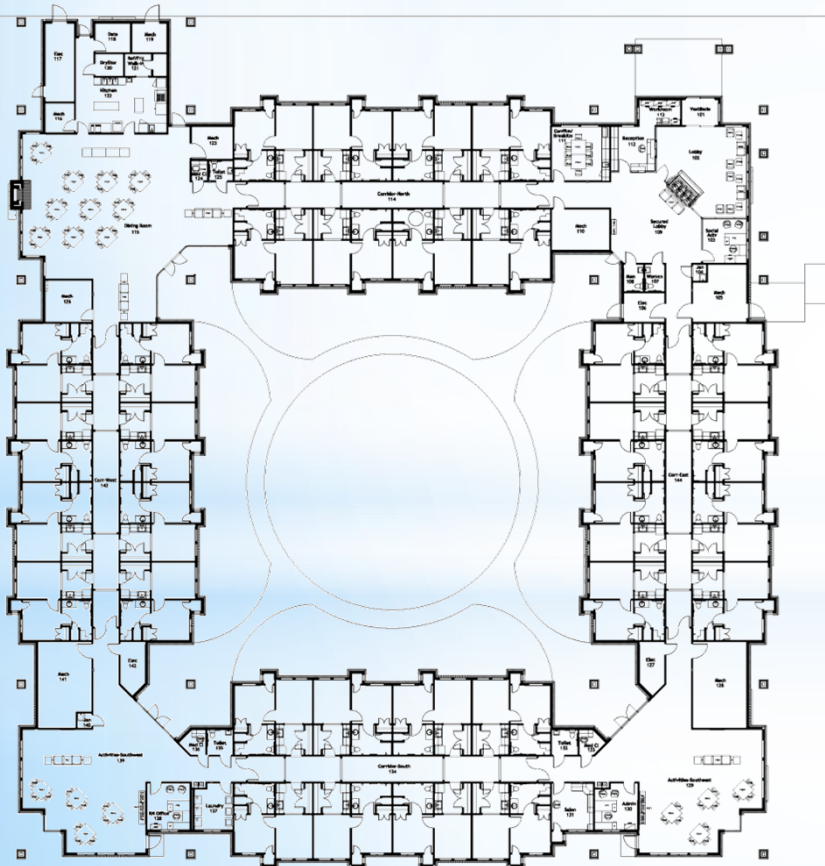
The Ginny and Bob Shell Alzheimer's Center exists to provide quality resident-centered care, with compassionate Christian values. We will minister to both residents and families, addressing their unique needs.

Our goal in caring for our residents is not to cure impaired cognitive functioning, but rather to create an environment and support system where they can remain as independent and autonomous as possible, in spite of their losses.

# Design

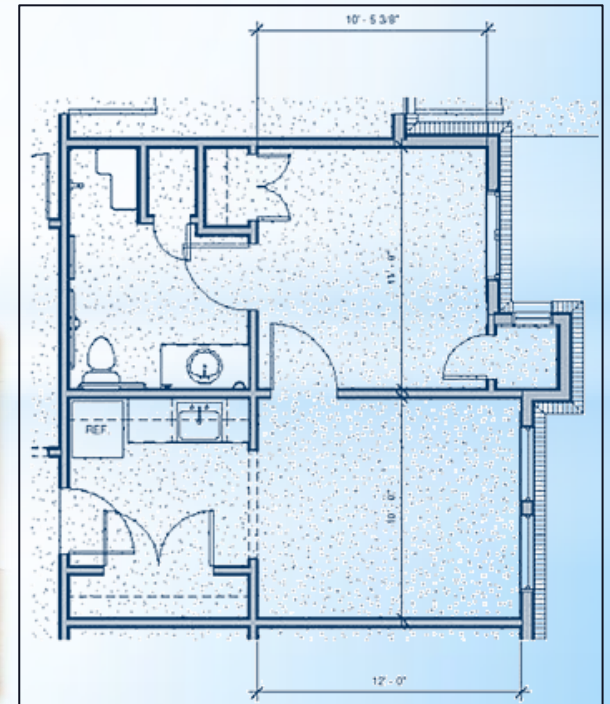
Licensed through Arkansas OLTC - Assisted Living II-  
Certified ASCU

Occupancy: 32 1-Bedroom Apartments, 430 s.f.  
Licensed for up to 60 Residents



## *Services and Amenities*

- ❖ 24-hour staffing -- RN/LPN/CNA
- ❖ Secured entry/exit in home-like environment
- ❖ All meals, housekeeping, laundry provided
- ❖ Medication management
- ❖ Apartments furnished with full-size refrigerator/kitchenette
- ❖ Basic Cable/Telephone included
- ❖ Individually controlled heat/AC
- ❖ Beauty/Barber Shop
- ❖ Game/Activity Rooms
- ❖ Assistance with ADL's
- ❖ Emergency call system
- ❖ Purposefully designed activities
- ❖ Spacious, secure courtyard
- ❖ Respite Care (January 2017)



# *Admissions*

Residents since opening in November 2010: **84**

Current Occupancy: 21

Average length of stay: 18 mos.

Longest Residency: 72 mos. (moved in at opening)

Minimum age: 60 yrs.

Residency/Application Fee: \$1500.00

Original Monthly Fee (2010) \$5300.00

Current Monthly Fee: \$5518.00 (4% increase)

Payer Sources

Private Assets

Long Term Care Insurance

VA Aid/Attendance Benefits

# *Financial Health*

Operating Revenue	October 2015	2016 (YTD)	Variance
	\$1,465,284	\$1,343,444	(\$121,840)
Operating Expenses	\$ 806,029	\$ 762,444	\$ 43,585
Labor Expenses	\$ 419,295	\$ 469,777	(\$ 50,482)

# *Occupancy*

Average Month End Occupancy:	2015	2016 (YTD)
	29	22



# *Current Market Conditions*

Memory Care Facilities (AL II) opened in Little Rock (metro) since 2010

Brookdale Chenal Heights

Elmcroft Maumelle

Foxridge - Chenal

Clarity Pointe Little Rock

Memory Care America @ Good Shepherd

Woodland Heights

Average monthly cost: \$6000



# *Future Needs*

- Grants
- Lower LTC insurance premiums/higher daily per diem rate
- Remove tax penalties for use of retirement savings when used directly for LTC
- Improved access to enhanced cognitive stimulation techniques
- Increased funding for continuing education for professional caregivers
- Increased access/resources to education for family caregivers
- Increased funding/access to respite care
- Increased funding for research (diagnosis, prevention, disease progression, cure)

***Thank  
you!!!***