

2024 EDUCATIONAL ADEQUACY STUDY

Arkansas's Biennial Evidence-based Study

Monday, January 8, 2024



2024 ADEQUACY STUDY



INTRO TO ADEQUACY

- Organization
- Statutory Requirements
- Presentations & Reports
- Team





Organization

Statute

PowerPoints & Reports



ORGANIZATION

Making it Manageable

3

ORGANIZATION- BINDERS

Your record of the adequacy report.

- TAB 1 **Meetings**: Agenda, Minutes, Tracking Sheet, PowerPoint, Reports
- TAB 2 **Adequacy Basics**: Tracking Sheet, Statute, Tentative Schedule, Matrix, Acronyms
- TAB 3 **Survey Results**: Superintendents, Principals, Teachers, Site Visits
- TAB 4 **History**: Presentation and Report
- TAB 5 **Methodologies & Definitions**

4

ORGANIZATION – SCHEDULE

DATE	ADEQUACY TOPIC
Jan. 8, 1:30 p.m.	Adequacy Study Process / Legal Framework of Adequacy / Adequacy History
Jan. 9, 9 a.m.	Lake View Measures / Student Achievement
Feb. 5, 1:30 p.m.	Facilities Funding and Partnership Program
Feb. 6, 9 a.m.	SY25 Adequacy Recs & Health Insurance Discussion / Arkansas's Funding Model for K-12 Education
TBD	Resource Allocation: Matrix – Staffing and Staff Salaries
TBD	Resource Allocation: Matrix – School- and District-Level Resources
TBD	Resource Allocation: Categoricals, Supplementals and Non-Matrix
TBD	Equity / Learning Expectations / CTE / Waivers
June 3, 1:30 p.m.	Teachers Salaries / Teacher Recruitment and Retention
June 4, 9 a.m.	Audit / State and Federal Accountability
July 8, 1:30 p.m.	Economic Forecast (including Medical CPI) / Preliminary Adequacy Report
July –Oct.	Deliberations / Recommendations by Education Committees
Nov. 1	Final Report Due

5

Organization

Statute

PowerPoints & Reports

STATUTORY REQUIREMENTS

The “Instructions”

6

STATUTORY REQUIREMENTS

- **Act 57 of the Second Extraordinary Session of 2003** established eight broad areas the Education Committees must review each biennium.

“Assess, evaluate, and monitor the entire spectrum of public education across the State of Ark. to determine whether equal educational opportunity for an adequate education is being substantially afforded to the school children of the State of Ark. and recommend any necessary changes...”

- **Act 1204 of 2007** (as amended by later acts) specified how these broad reviews should be accomplished.

“Evaluate the expenses of...”

- Fully detailed on the **“Tracking Sheet”**

7

STATUTORY REQUIREMENTS

To Paraphrase...

1. How does the state fund school districts to support an adequate and equitable education?
2. How do school districts spend that money?
3. Is it working, or do the state/school districts need to do something different?

8

Organization

Statute

Presentations & Reports

PRESENTATIONS & REPORTS

Two, Two, Two in One

9

Presentations and Reports

4 Kinds of Evidence

1. Arkansas Information*
2. Comparison Information in Other States
3. Best Practices Identified in Research
4. Input from Arkansas Educators
 - 4a. Surveys
 - 4b. Focus Groups with BLR Cohort Schools



This Photo by Unknown Author is licensed under [CC BY-SA-NC](https://creativecommons.org/licenses/by-sa/4.0/)

*No **LEARNS ACT** data until the next report.

10

Presentations and Reports – Evidence

Arkansas Information

1. Data
 1. Funding
 2. Expenditure
 3. Achievement
2. Program Overview/Description



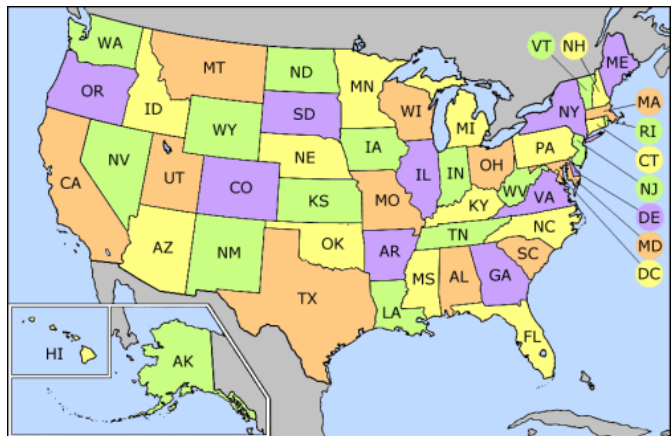
This Photo by Unknown Author is licensed under [CC BY](#)

11

Presentations and Reports - Evidence

Other States

1. Data
 1. Funding
 2. Expenditure
 3. Achievement
2. Program Overview/Description



This Photo by Unknown Author is licensed under [CC BY-SA](#)

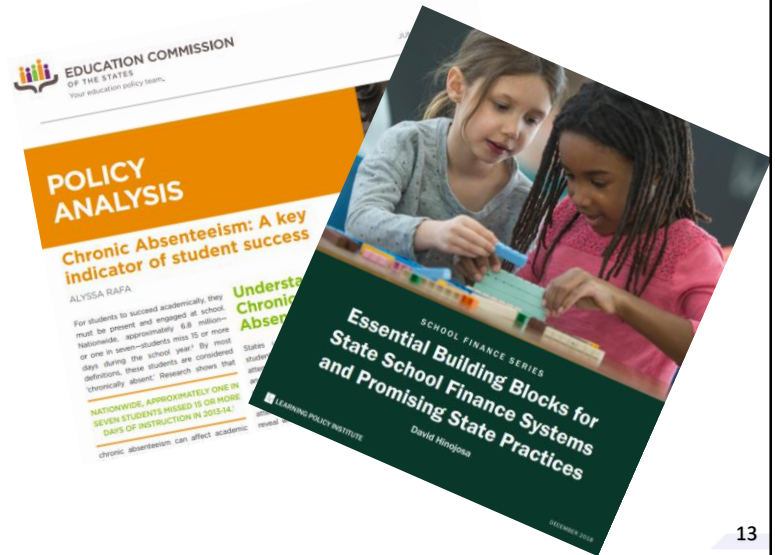
12

Presentations and Reports - Evidence

Best Practices

Identified in research

- Peer-Reviewed
- Trusted Sources
- Abundance of Research



13

Presentations and Reports - Evidence

Arkansas Educators Input

Feedback obtained through:

1. Superintendents' Survey
2. Principals' Survey
3. Teachers' Survey
4. BLR Cohort Site Visits(Sept./Oct. 2023)

14



Presentations and Reports - Evidence

Superintendents Survey

- Sent to all superintendents/charter school directors
- 100% response rate (255)
- Administered May-Aug. 2023
- Non-data questions
- **14 topic areas:** Background, Adequacy Funding, Principal Recruitment and Retention, School Accountability, School-Based Mental Health, Nurses, Substitutes, Alternative Learning Environments, Career and Technical Education, School Safety, Facilities, District Operations, Technology/Digital Learning, Preschool Programs

15



Presentations and Reports - Evidence

Principals Survey

- Sent to all principals
- 76% response rate (807)
- Administered May-July 2023
- Non-data questions
- **11 topic areas:** Background and Principal Preparation, Working Conditions, Teacher Recruitment and Retention, Evaluation and Support, School Accountability, School-Based Mental Health, School Safety, Facilities, Career and Technical Education, Instructional Materials, Technology/Digital Learning

16



Presentations and Reports - Evidence

Teachers Survey

- Sent to all teachers
- 16% response rate (5,103)
- Administered May-Aug. 2023
- Non-data questions
- 9 topic areas: Background and Teacher Preparation, Teaching Environment and Working Conditions, General Employment Information, Career/Retirement, Evaluation and Support, School Safety, School Facilities, Instructional Materials, Technology/Digital Learning

17



Presentations and Reports - Evidence

BLR Cohort Site Visits

- Superintendent/Principal interviews
- Teachers/Students focus groups
- Sept. – Oct. 2023
- Questions relating to school practices, climate, culture

18



Presentations and Reports - Evidence

BLR Cohort Site Visits Common Themes

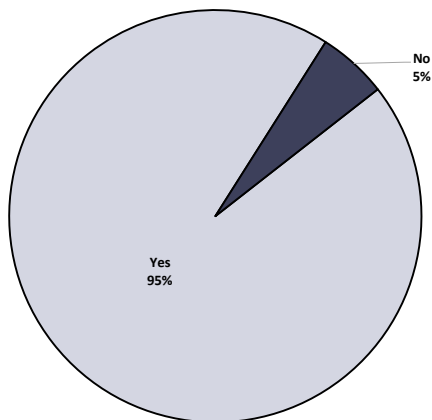
- Pervasive culture of learning
- Focus on students
- Respected and shared leadership
- Collaboration and accountability
- Fun and engaging lessons
- Safe, nurturing environment
- Strong parental and community support

19

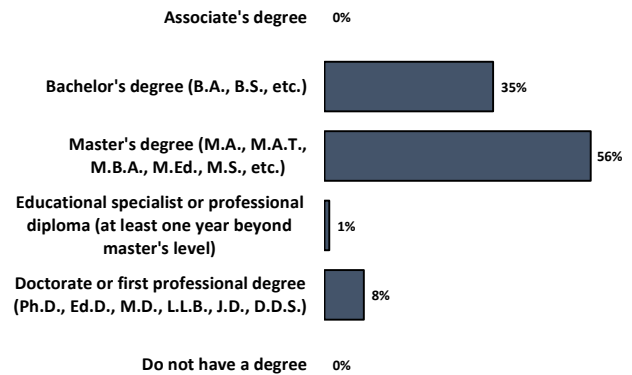
Presentations and Reports – Charts & Maps

Charts

Do you currently hold a license or certification in “school administration”?



What is the highest degree you have earned?

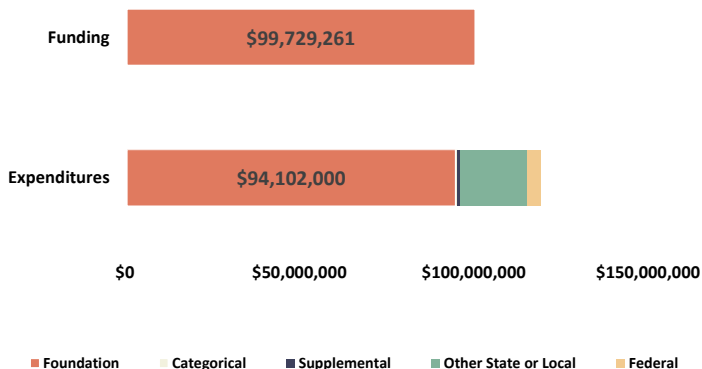


20

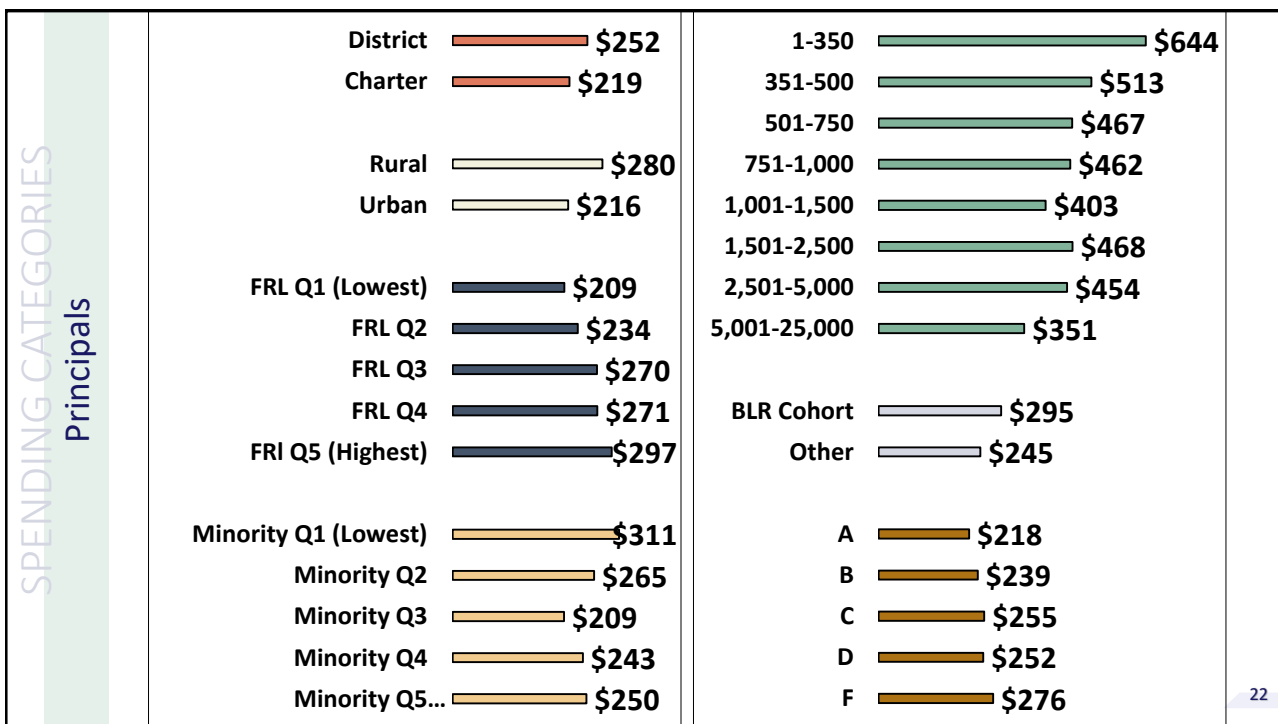


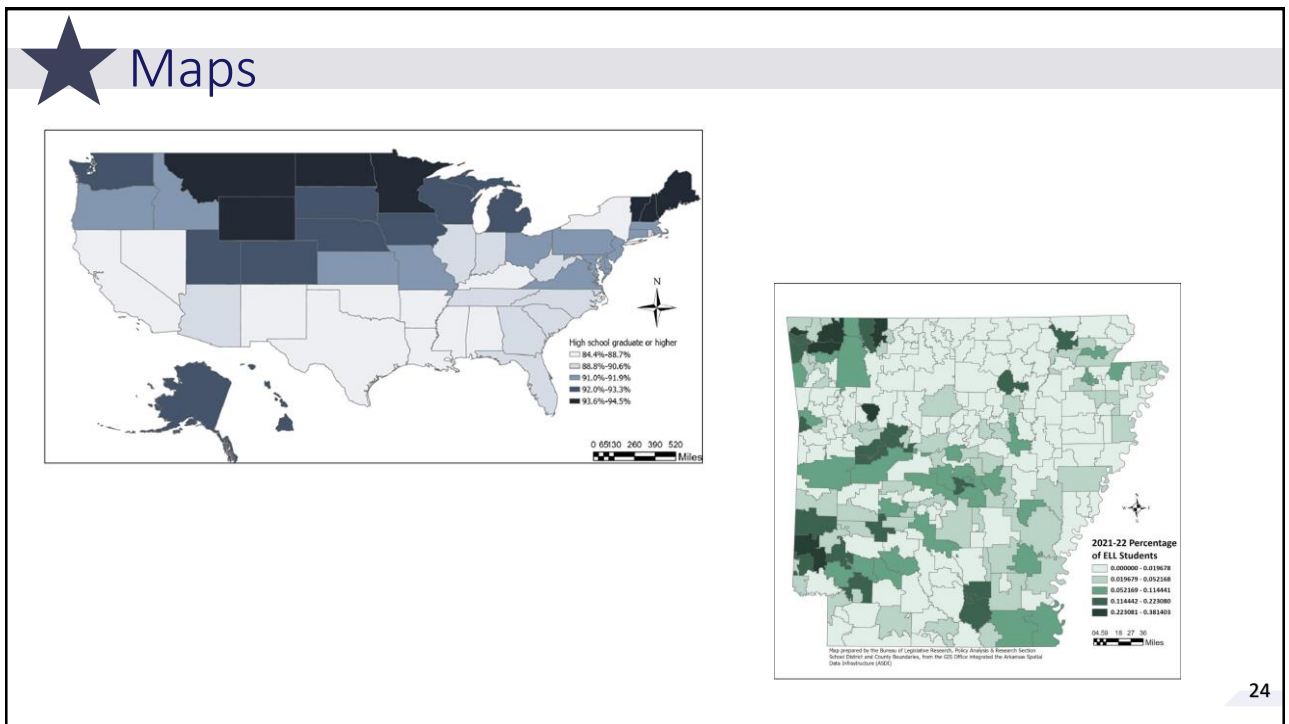
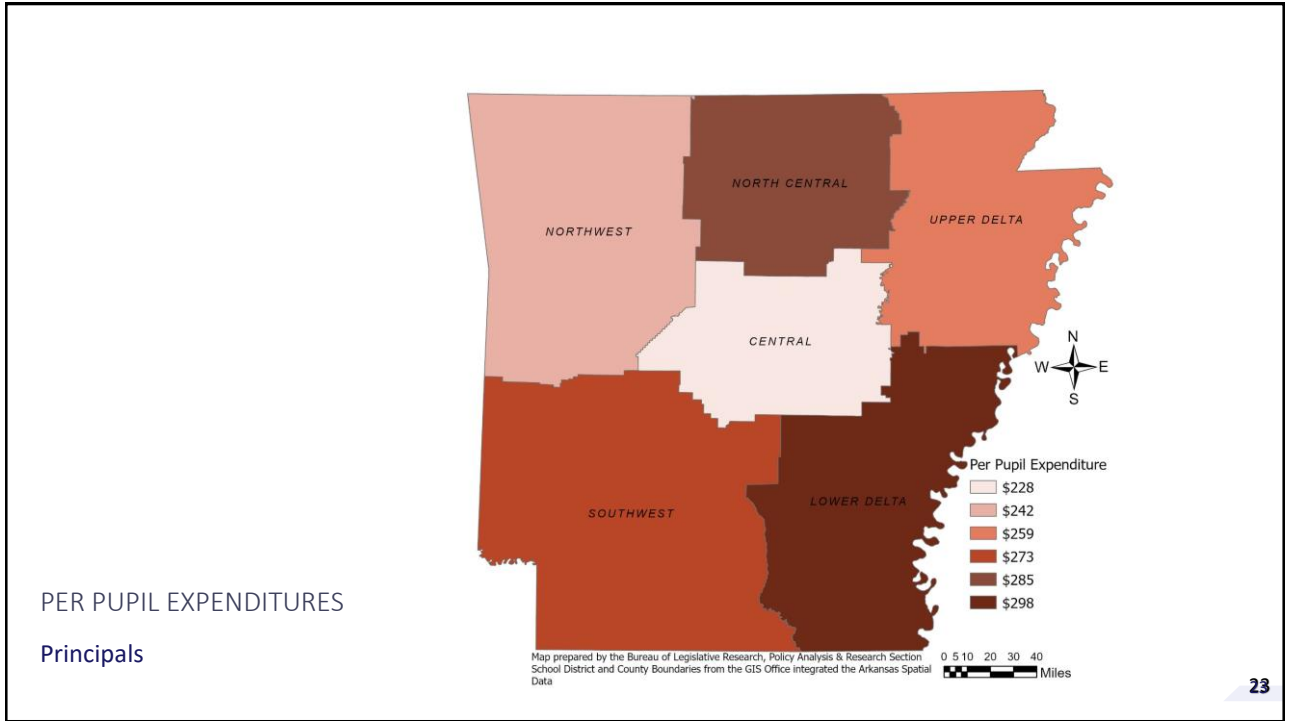
Principals / 2023

Foundation Funding v. Spending Bar



- Quickly see amount of funding from foundation for matrix line item compared with spending from all sources of funds
- Will have one for each item in the matrix in Resource Allocation Reports





Adequacy Staff

PAR Team



Paul Atkins, Adrienne Beck, Lori Bowen, Elizabeth Bynum, Leah Headley, Chrissy Heider, Julie Holt, Jasmine Ray, Jessica Whittaker

Other Contributors

- Committee Staff – Emily Morozov, Catherine Lett
- Legal – Taylor Loyd
- Fiscal – Katie Walden
- Proofers – Karlie Cooper, Kristy Hutchinson, Caitlyn Steele



THANK YOU

holtj@blr.Arkansas.gov / 501.537.9194