



Executive Summary

The team presented in this document is unparalleled in terms of services, personnel, and experience. Our extensive statewide performance in Ohio and Idaho, as well as our work in the District of Columbia and the massive 17,000-facility endeavor in Honduras, demonstrate our ability to successfully and efficiently manage large-scale facility assessment projects. We are certain you will find us well qualified to meet your needs as you “assess, evaluate, and monitor the school facilities across the state to ensure that adequate facilities and substantially equal facilities are, and will continue to be, provided for Arkansas’ schoolchildren.”

Our team is comprised of four firms. We have successfully partnered on many projects due to our complementary services, respect for each other, and common goal of improving educational facilities for the current and future generations of children.

DeJONG

DeJONG is an educational planning firm committed to providing its clients with leadership, direction, and expertise. Since its inception in February of 1992, it has been recognized as the premier educational planning firm in the United States. DeJONG's commitment is the positioning and empowering of communities and organizations to develop quality learning environments for the future. DeJONG has completed over 1,500 educational planning projects for K-12 school districts across the United States, Canada, and Honduras.

Fanning/Howey

Fanning/Howey Associates, Inc. is the nation’s top-ranked firm in educational facilities planning and design. Nationally, the 400-person firm has completed nearly 900 schools within the last five years, representing over \$5.8 billion in construction volume. Fanning/Howey’s work spans the U.S.—from Alaska to the Florida Keys—as well as overseas. The firm has published extensive research addressing the impact of facilities on the quality of education, including three acclaimed books on school design.

Magellan K-12


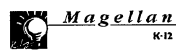

Magellan K12 is a specialty consulting firm providing services to education clients nationwide. The firm is focused solely on the K-12 marketplace and provides Educational Adequacy and Suitability Assessments. The firm’s methodology is founded on its standards-based approach for conducting these assessments for medium to large school districts. These studies assist districts in determining the degree to which a school's facilities can adequately support the instructional mission and methods. They also complement comprehensive building condition assessments.

Summit Consulting Services




Summit Consulting Services, LLC, was formed in 1999 by individuals that led the Construction Risk and Dispute Resolution Advisory for PricewaterhouseCoopers. Prior to being with PricewaterhouseCoopers, this team had been part of the Construction Litigation Practice for Coopers & Lybrand. Summit personnel have decades of committed experience in program management and provide design, program, and construction related consulting services to a wide variety of public owners, including state agencies.



Summary of Team

Firm Information	DEJONG	 Fanning/Howey Associates, Inc. Architects Engineers Consultants	 Magellan K-12	 SUMMIT
Discipline and Classification	Educational Planners	Architects and Engineers	Educational Adequacy and Facility Assessment	Construction Project Consultants
Form of Ownership	Corporation	Corporation	Corporation	Corporation
Years in Business	11	42	6	4
Years of Experience with Public and Private Sector Entities	11	42	6	4
Years of Experience in the Condition Assessment Field	11	42	6	4

**Select Services Specific to State of Arkansas
 Statewide Facilities Adequacy Assessment**

DEJONG	 Fanning/Howey Associates, Inc. Architects Engineers Consultants	 Magellan K-12	 SUMMIT
<ul style="list-style-type: none"> ➤ Educational Adequacy Assessments ➤ Development of Educational Adequacy Tools ➤ Development of State Guidelines and Programs ➤ Facility Master Planning ➤ Meeting Facilitation ➤ GIS ➤ Facility Prototypes ➤ Facility Standards Development 	<ul style="list-style-type: none"> ➤ Facility Condition Assessments ➤ Development of State Guidelines and Programs ➤ Financial Analysis 	<ul style="list-style-type: none"> ➤ Educational Adequacy Assessments ➤ Development of Educational Adequacy Software ➤ Facility Condition Assessments ➤ Financial Analysis ➤ Construction Implementation Planning ➤ Facility Standards Development 	<ul style="list-style-type: none"> ➤ Program Development ➤ Constructability Review ➤ Value Engineering ➤ Cost Estimating ➤ Project Management Services ➤ Project Management Oversight ➤ Critical Path Scheduling



Prior Experience as a Team

PROJECT	DeJong	Fanning/ Howey	Magellan K-12	Summit
State of Ohio	X	X	X	X
OSFC Design Manual	X	X		X
Ohio Urban Districts: Akron, Canton, Cincinnati, Cleveland, Columbus, Dayton, Toledo	X	X	X	X
Anchorage School District, AK	X	X		
Broward County Public Schools, FL	X		X	
Clark County School District, NV	X		X	
Dallas Independent School District, TX	X		X	
Dayton Public Schools, OH	X	X		
District of Columbia Public Schools, Washington, D.C.	X	X		
Orange County Public Schools, FL	X		X	
43 additional projects from 1992-present	X	X		



Firm Characteristics

Our team has:

- 1. Demonstrated statewide school facility assessment experience;**
 - Continuing involvement with the Ohio School Facilities Commission since its inception
 - Republic of Honduras National School Facilities Master Plan
 - District of Columbia Public Schools Facility Master Plan
 - Comprehensive Educational Facility Plans for eight West Virginia counties in conjunction with the School Building Authority state agency
 - Florida Department of Education Florida Inventory of School Houses [FISH] inventories for five Florida Districts

- 2. Sufficient current resources to manage the scope of work provided herein;**
 - Combined staff of over 450
 - Current and projected workload will accommodate to this endeavor
 - Current and continuously-updated technology and production capabilities

- 3. Registered professionals experienced in facility assessments;**
 - 89 registered architects and engineers
 - 15 REFP [Recognized Educational Facility Professional] members certified by the Council of Educational Facility Professionals, International [CEFPI]
 - Combined team has performed over 15,000 facility assessments

- 4. Technology based capability with proven experience in using sophisticated database collection tools;**
 - Custom-designed A.P.P.L.E. assessment software
 - Extensive experience with and daily updating of the OSFC webtool: an award-winning centralized database and project-management website
 - Complete in-house services for all aspects of planning, design, and project management

- 5. Expertise in educational adequacy;**
 - Development of educational adequacy tools and software
 - Authors of OSFC *Design Manual* Educational Adequacy component
 - Hired by architects and engineering firms unqualified to perform educational adequacy assessments

- 6. Documented experience in performing program management services on projects of similar scope and size;**
 - Republic of Honduras National School Facilities Master Plan: 17,000 facilities
 - State of Ohio: 3,600 facilities
 - State of Idaho: 600 facilities
 - Seven Ohio Urban School Districts: 551 facilities
 - District of Columbia Public Schools: 149 facilities
 - Clark County Public Schools [Las Vegas], Nevada: 284 facilities
 - Broward County Public Schools [Ft. Lauderdale], Florida: 219 facilities



Key Personnel

DEJONG DeJONG

Dr. William S. DeJong, REFP

- CEFPI Planner of the Year and Past President
- Harvard Lecturer
- Principal-In-Charge of Honduran National Facility Master Plan

Charles Warner, AIA, REFP

- OSFC Design Manual Co-Author
- Award-Winning Designer
- NCARB Certified



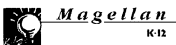
Fanning/Howey

Clair E. Howey, AIA

- OSFC Design Manual Co-Author
- NCARB Certified
- Detroit Public Schools Design Manual

Ronald H. Fanning, AIA, PE, REFP, NCEE

- OSFC Design Manual Co-Author
- CEFPI Acting President and International Director
- NCARB Certified



Magellan K-12

Sam Wilson

- Idaho Statewide Facilities Assessment Update
- Custom-Designed A.P.P.L.E Assessment Software
- Over 30,000 Educational Adequacy Classroom Evaluations



Summit Consulting Services

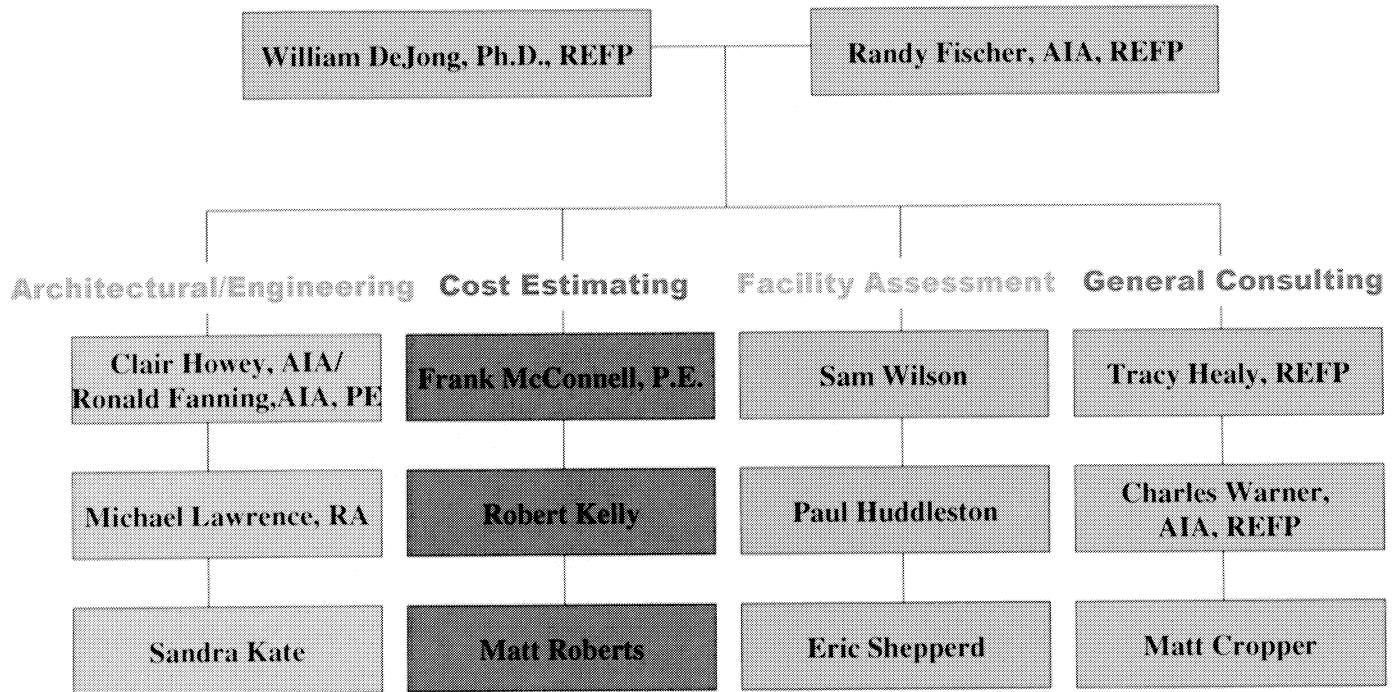
Randall Fischer, AIA

- Executive Director OSFC, 1997-2002
- Former State Architect of Ohio
- CEFPI International Board of Directors



Organization Chart

Directors-In-Charge



Assessment Headquarters Office

DeJONG and the other team members have many times successfully established local offices for a project’s duration to ease communication with the Owner and allow for efficient delivery of services. This has been successfully done in Idaho; Clark County, Nevada; Orange County, Florida; and Washington, District of Columbia. Our facility requirements include:

- Close proximity to owner’s representative
- Office space to accommodate staff – size TBD after “Plan for Planning” meeting
- Conference room to accommodate Task Force Committee
- Internet access
- Ample electrical outlets
- Access to copy machine



Capability to Perform Work

Our Team would not commit to this undertaking unless we had the time, staff, resources, knowledge, experience, technology, and desire. We will be able to complete all tasks, activities, and responsibilities with personnel from our firms.

Our firms keep close track of all project timelines to anticipate staffing needs. As projects near completion, we are looking ahead to where we are going next. This allows for a workload sufficient to keep our staff working at a consistent level. The April 30 and October 1, 2004 deadlines are feasible based on the current project capacity.

Fanning/Howey's ability to handle broad-scope educational projects is the reason that 16 school districts---members of The Council of Great City Schools, which is a collection of the nation's largest school districts-- have chosen to work with them.

Again, we do not commit to a project until we have confirmed that our team has the resources to provide prompt, personalized service throughout each phase of planning, design, and construction. We have carefully examined your proposed schedule and are prepared to immediately support your project with:

- Project directors with national perspective
- A team of more than 450 architects, engineers, technical personnel, and consultants
- 89 registered architects and engineers
- Complete in-house services for all aspects of planning, design, and project management
- Technology staff and services to perform the work
- Our most senior architects and engineers, each of whom have extensive experience with large-scale project management and school design manuals

Technology

The RFQ asks for "technology based capability with proven experience in using sophisticated database collection tools." You will benefit from our technology capabilities; professional copiers and printers, in-house webpage design, continuously updated hardware and software are only a few. As a technologically advanced staff, we are on the "cutting, not bleeding" edge of technology in educational facility planning. This keeps us abreast of technology that increases work efficiency, but away from useless trends. We apply these standards both to our staff and to standards within schools and for our clients.

In addition, we are pleased to bring you the custom-designed A.P.P.L.E. facility assessment software. Developed specifically for K-12 school facilities, it has become an invaluable planning tool for school districts across the country. Explanation of the software follows.

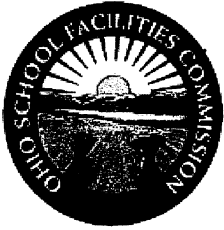


Ohio School Facilities Commission Experience

Our four Team members have worked together in the State of Ohio since 1997, when Ohio found itself in a similar situation to Arkansas.



Background



In March of 1997, Ohio's Supreme Court ruled that the State's method of funding its K-12 schools was unconstitutional. The decision, based largely on the issue of equity, stated that a heavy reliance on property taxes created an inequitable distribution of funds. Regarding school facilities, the decision had two major points. First, it was ruled that the State was now responsible for the condition of its school facilities. Second, the court ruled that the state was to address the needs of the "poorest" districts first.

Within two months of the Court's decision, legislation was passed creating the Ohio School Facilities Commission [OSFC] and an allocation of \$500 million was appropriated to immediately address the most severe facilities needs. Randal Fischer, Managing Director of Summit Consulting, then the State Architect, was asked to become the Executive Director of the OSFC, an organization whose sole purpose was to assess, plan, set design criteria, fund, and oversee the rebuilding of Ohio's 612 school districts. Currently, OSFC spends approximately \$2 million daily on school construction projects.

Our Experience

Our Team's technical experience in Ohio is documented throughout this Qualifications document. However, we feel it is important to state the Team's experience with the non-technical aspects of addressing the school facility needs of an entire state. The Team has added experience with the following:



- Working under pressure and timelines surrounding a court-ordered mandate to evaluate the need and repair schools quickly.
- Understanding the political realities, statewide and locally, both real and perceived, that are created in situations like this.
- Building an organization and implementing programs entirely from scratch that has satisfied the Ohio Supreme Court's directive to provide an equitable level of school facilities across the state.
- Working closely with a state's Executive and Legislative branches by attending meetings, testifying before legislative committees, and appearing before the media.
- Working closely with various advocacy groups by listening and educating.
- Remaining conscious of budgetary constraints and completing projects under budget.