



Research Report

Analysis of Arkansas School District Financial, Student, and Achievement Data for the 2009 School Year

April 6, 2010

**Prepared for
THE JOINT ADEQUACY EVALUATION
OVERSIGHT SUBCOMMITTEE
of the House and Senate Interim Committees on Education**

BUREAU OF LEGISLATIVE RESEARCH

315 State Capitol Little Rock, Arkansas 72201 (501) 682-1937 www.arkleg.state.ar.us

Table of Contents

METHODOLOGY	1
SCOPE	1
DATA SOURCES	1
DATA VERIFICATION	1
PER PUPIL CALCULATIONS	1
K-12 EXPENDITURES	1
TOTAL K-12 INSTRUCTIONAL EXPENDITURES	2
EXPENDITURE PERCENTAGES	2
DISTRICT CONSOLIDATIONS	2
DISTRICT ACTAAP PERCENT PROFICIENT AND ABOVE SCORES	3
STATISTICAL ANALYSIS APPROACH	3
REGIONAL COMPARISONS	3
MAPS	3
DISTRICT-LEVEL DATA	4
REPORT REVIEWED WITH THE DEPARTMENT OF EDUCATION	4
SUMMARY	5
FUNDING SOURCES	5
EXPENDITURE ANALYSIS	7
FUND BALANCES	7
INSTRUCTION PERCENTAGE	8
ACTAAP PERFORMANCE	8
REGIONAL TRENDS	9
FIVE YEAR THREE QUARTER AVERAGE DAILY MEMBERSHIP	9
REVENUES AND EXPENDITURES 2009, 2008, AND 2007	10
Map 1 – 2009 Property Taxes Per Pupil	11
Map 2 – 2009 Selected Revenues Per Pupil	12
Map 3 – 2009 Weighted ACTAAP Analysis	13
Map 4 – 2009 NSLA Percent	14
Map 6 – 2009 Five Year Three Quarter Average ADM Change	16
Map 7 – 2009 Regional Summary	17
SCHEDULE 1 – 2009 PROPERTY TAXES AND SELECTED REVENUES BY DISTRICT	18
SCHEDULE 2 – 2009 STATISTICAL DATA	25
SCHEDULE 3 – 2009 EXPENDITURE PERCENTAGES BY DISTRICT	32
SCHEDULE 4 – FUND BALANCES BY DISTRICT	39
EXPENDITURE FUNCTION DESCRIPTIONS	46

METHODOLOGY

SCOPE

The scope of this report is limited to district-level financial, student statistical and student achievement data for the 2009, 2008, and 2007 school years. School-level data, including teacher / staff levels and qualifications, instruction methods and school resources, were not within the scope of the analysis of this report. Additionally, charter and special school districts and related schools were not included within the scope of this report.

DATA SOURCES

Financial data, student demographical data, and NSLA data was extracted from a data warehouse maintained by the Arkansas Public School Computer Network (APSCN), Division of the Arkansas Department of Education by the Bureau of Legislative Research staff. The desegregation funding amounts shown on page 10 of this report were provided by the Department of Education. Student achievement data for the 2009, 2008, and 2007 school years is based upon data prepared by National Office for Research, Measurement and Evaluation Systems (NORMES) of the University of Arkansas and was provided through the Arkansas Department of Education.

DATA VERIFICATION

The data used for analysis in this report has not been audited. Where possible, data for the 2009 school year was reconciled to the Annual Statistical Report prepared by the APSCN Division of the Department of Education. **Data reported from the APSCN Data Warehouse is subject to the accuracy of the coding provided by the school districts.**

PER PUPIL CALCULATIONS

All revenue and expenditure-per-pupil calculations are based upon the current year three quarter average daily membership. Pupil calculations for Pulaski County include the three quarter average magnet school average daily membership and the three quarter average daily membership for M to M students received for the purposes of expenditure analysis on Maps 3-7 and the supporting Schedules 2 and 3. Magnet and M to M average daily membership (ADM) are not included on Map 1, Map 2, and the supporting Schedule 1 as desegregation funding is not included.

K-12 EXPENDITURES

(Less Facilities Acquisition/Construction and Debt Service)

Total K-12 expenditures include all instruction, administrative, support, transportation, and non-instructional costs except for expenditures charged to function codes for Facilities Acquisition/Construction and Debt Service. Capital outlay charged directly to function codes, such as instruction and transportation, are included in the costs of those functions. Expenditures for adult education and preschool instruction have been excluded. Expenditures for the three school districts in Pulaski County include amounts expended from desegregation funds.

TOTAL K-12 INSTRUCTIONAL EXPENDITURES

Total K-12 instructional expenditures include all costs (including capital outlay) charged to the instruction function code except for adult education and preschool instruction.

K-12 Revenues Presented at Map 2 and Schedule 1

Selected revenues are summarized at Map 2 and Schedule 1 for the purpose of comparing the relative amounts of major funding sources between districts. The revenues presented do not comprise the total of all school district revenues. Major types of revenue included in Map 2 and Schedule 1 are as follows:

- 1. Unrestricted Funds** include foundation funds, enhanced educational funding, tax collection rate guarantee, student growth funds, declining enrollment, isolated funding, supplemental millage incentive funding and debt service millage receipted or transferred to unrestricted funds by the school districts. Other local revenues for activity fees and food service fees are included in unrestricted funds. Foundation funds include 25 uniform rate taxation (URT) mills.
- 2. Restricted State Categorical Funds** include funding for the following programs - Alternative Learning Environment, English Language Learners, National School Lunch Student Funding and Professional Development.
- 3. Other Restricted State Funds** include grants for curriculum development, instructional support and operating support. Revenues presented at Map 2 and Schedule 1 as other state funds exclude desegregation funding and exclude academic facilities funding.
- 4. Restricted Federal Grant Funds** include all federal funds recorded as revenues in the Federal Grant Fund. The two largest programs included are Title I and Title VIB funding. Federal funds for nutrition programs are not included in the revenues presented at Map 2 and Schedule 1.

EXPENDITURE PERCENTAGES

Calculations of expenditure percentages for K-12 Expenditures (less Facilities Acquisition and Construction and Debt Service) for the 2009 school year are included in this report at Schedule 3. The expenditures presented on Schedule 3 consist of all funding sources of school districts (less facilities and debt service expenditures). **The types of expenditures and relative percentages for expenditures considered as a total may differ significantly from similar calculations made on any specific funding source.** For example, the percentages and types of expenditures from Foundation Funds may differ significantly from expenditures of various district funding sources considered as a total.

DISTRICT CONSOLIDATIONS

There were no district consolidations for the 2009, 2008, and 2007 school years. The Batesville and Cushman School Districts were consolidated effective July 1, 2009. Data for these two districts have been presented and analyzed as separate entities in this report.

Several school district consolidations occurred in the relevant period of the calculation of the 2009 five year average daily membership (ADM). This calculation uses the 2009 districts as the basis for this calculation and incorporates the ADM statistics of consolidated districts into the appropriate 2009 consolidated entity.

DISTRICT ACTAAP PERCENT PROFICIENT AND ABOVE SCORES

Arkansas Comprehensive Testing, Assessment and Accountability Program (ACTAAP) percent proficient and above scores for purposes of comparing district student achievement levels for the 2009, 2008, and 2007 school years are based upon the average reported district scores for six tests - 4th grade literacy and math, 8th grade literacy and math, end of course algebra and 11th grade literacy. A weighted average of these six tests was calculated based upon the number of students scoring proficient or above for each of the six tests. The scores used were for the "combined population". This report does not include any analysis based upon specific subgroups within the "combined population".

STATISTICAL ANALYSIS APPROACH

The basic statistical methodology utilized is a division of the school district data into five equal data sets for each 20 percentile (quintile) level for the particular data value being examined. In 2009 there were 245 school districts, and each quintile group consisted of 49 school districts. The average value for all districts within the quintile was calculated for an ACTAAP proficient and above score, District ADM, NSLA percent, white/non-white percent, and/or other statistics. **For purposes of computing average values for a percentile group, the statistical and fiscal indicators of each district counted the same as every other district without any weighting for district average daily membership.** When a quintile was selected using this approach, all related values (ACTAAP, ADM, NSLA%, etc.) were also calculated for that group of school districts. This approach has been used to focus greater attention on the relationship of these characteristics.

It should be noted that although the analytical procedures discussed above are often helpful in identifying major trends or patterns related to the primary variable under consideration, there still may be differences relating to other variables of a school district included within any particular percentile group.

REGIONAL COMPARISONS

Calculations of average values for key statistical and fiscal indicators will be shown based on geographical regions within the state. The state geographical regions and assignments of school districts to those regions are based upon suggestions of staff of the Bureau of Legislative Research. **For purposes of computing average values for each geographical region of the state presented, the statistical and fiscal indicators of each district counted the same as every other district without any weighting for district average daily membership.**

MAPS

All maps included in this report have been prepared by staff of the Bureau of Legislative Research using geographic data from the Arkansas Geographic Information Office. All maps except Map 6 are based upon the 49-district quintile grouping discussed above. Map 6 is a representation of the 2009 five year three quarter average ADM change and is based upon six ranges of ADM change as reflected on the map legend. The six ranges represented on the map include increases and decreases of zero to ten percent, ten to twenty percent, and more than twenty percent.

DISTRICT-LEVEL DATA

District-level statistical and fiscal data used in this report for the 2009 school year is presented in the accompanying schedules.

REPORT REVIEWED WITH THE DEPARTMENT OF EDUCATION

A preliminary draft of this report was reviewed with staff of the Department of Education.

SUMMARY

FUNDING SOURCES

Major revenue sources for districts include foundation funds (including the first 25 mills of property taxes), property taxes above 25 mills, other state unrestricted funds (such as tax collection rate guarantee and declining enrollment funding), restricted state funds (such as categorical funds), other restricted state grants for instruction and instruction support and federal funds for instructional support and nutrition programs.

Property tax revenues vary by district based on the valuation of assessed property and the approved millage rates. The chart below divides districts into quintiles based on property taxes per pupil. Property taxes for purposes of the APSCN accounting system are treated as unrestricted revenues, though specific millage rates may be approved at the local level for debt services or other dedicated purposes. The analysis of property taxes indicates that a substantial amount of property taxes related to debt service millage is being used for purposes other than debt service. Property taxes in excess of actual debt service requirements are one of a number of variables affecting the amount of resources that some districts have available for instruction and operations. The majority of exhibits and schedules in this report exclude building acquisition and debt service expenditures. An abbreviated analysis of 2009 property taxes is presented below:

2009 QUINTILE	5	4	3	2	1
2009 PROPERTY TAXES PER PUPIL	\$4,161.30	\$2,667.70	\$2,084.77	\$1,722.52	\$1,335.03
2009 Assessed Value Per Pupil	\$116,621.56	\$75,783.92	\$60,487.62	\$50,085.55	\$39,731.82
Selected 2009 Revenues Per Pupil	\$9,586.48	\$9,390.69	\$8,889.86	\$8,793.72	\$8,568.81
Unrestricted Funds Per Pupil	\$8,220.33	\$7,746.77	\$7,383.05	\$7,301.58	\$7,011.36
State Categorical Funds Per Pupil	\$451.59	\$508.71	\$480.11	\$493.85	\$525.03
Other State Restricted Grants (Excludes Magnet and Academic Facilities Programs)	\$158.02	\$227.24	\$217.60	\$214.92	\$238.74
Federal Grant Fund Revenues (Excludes Nutrition Programs)	\$756.54	\$907.97	\$809.10	\$783.38	\$793.68
Foundation Funds as a Percent of Selected Revenues Included Above	61.97%	63.51%	65.86%	66.96%	67.51%
ACTAAP 2009	69.13%	66.80%	68.70%	69.66%	66.35%
NSLA Percent	55.90%	61.45%	60.16%	60.98%	65.66%
% White	73.51%	74.11%	78.36%	82.11%	76.48%

Map 1 and Schedule 1 of this report show 2009 property taxes by district. Map 1 indicates that the districts in the quintile groups with the highest amount of property taxes per pupil are not always the districts with the lowest NSLA percentages.

Some major revenue sources, however, are directly dependent upon the poverty rate (NSLA) of the district or specific needs of a district. Examples include state restricted categorical funds and Title I federal funds. Selected major 2009 revenue amounts per pupil are summarized below and at Map 2.

2009 QUINTILE	5	4	3	2	1
Selected Revenues Per Pupil	\$10,753.30	\$9,397.29	\$8,810.57	\$8,359.82	\$7,908.57
Unrestricted Funds Per Pupil	\$8,342.65	\$7,719.15	\$7,458.73	\$7,184.41	\$6,958.15
State Categorical Funds Per Pupil	\$774.72	\$567.27	\$430.98	\$375.41	\$310.91
Other State Restricted Grants (Excludes Magnet Programs and Academic Facilities)	\$372.99	\$225.95	\$168.67	\$159.91	\$128.99
Federal Grant Fund Revenues	\$1,262.94	\$884.92	\$752.19	\$640.09	\$510.52
Foundation Funds as a Percent of Selected Revenues Included Above	56.77%	62.06%	66.21%	68.86%	71.89%
2009 Property Taxes Per Pupil	\$3,095.11	\$2,597.69	\$2,437.03	\$2,101.59	\$1,739.91
ACTAAP 2009	58.32%	66.81%	69.67%	71.86%	73.99%
NSLA Percent	74.62%	65.51%	59.99%	55.33%	48.70%
% White	57.99%	71.82%	81.27%	83.25%	90.25%
% Non-White	42.01%	28.18%	18.73%	16.75%	9.75%

The analysis above indicates that revenues are higher for the quintile group having the highest NSLA rate and lowest for the quintile group for the lowest NSLA rate. Foundation funding is a larger percentage of available major revenues for the groups having the least amount of total revenues.

District specific data for the selected major revenue types summarized above are at Schedule 2 of this report.

EXPENDITURE ANALYSIS

Maps 3, 4 and 5 show summaries of expenditures by ACTAAP performance, NSLA and percent white respectively. The general pattern apparent in this analysis is that expenditure levels are greatest among districts having higher NSLA and non-white rates. ACTAAP performance is usually higher among districts with the lower NSLA and the higher percentages of white students. As an illustration of these relationships, a summary of the analysis of expenditures by NSLA percentage is presented below:

2009 QUINTILE	5	4	3	2	1
NSLA PERCENT	84.82%	67.90%	59.47%	52.31%	39.66%
2009 3 QTR AVG ADM	1,234.94	1,942.64	1,839.97	1,858.21	2,486.75
% White	47.59%	77.90%	82.71%	85.72%	90.65%
% Non-White	52.41%	22.10%	17.29%	14.28%	9.35%
ACTAAP 2009 Proficient and Above Percentage	55.68%	66.31%	70.33%	72.40%	75.90%
ACTAAP 2009 Compared to 2007	11.23%	10.44%	10.93%	10.83%	10.50%
2009 Total K-12 Expenditures Less Facilities and Debt Service - Per Pupil	\$10,136.16	\$8,910.90	\$8,233.03	\$8,486.79	\$7,875.37
2009 K-12 Instruction Expenditures Per Pupil	\$5,639.11	\$5,047.80	\$4,894.78	\$4,919.26	\$4,661.02
Instruction % of 2009 Total K-12 Expenditures Less Facilities and Debt Service	55.70%	56.78%	59.46%	58.03%	59.24%

FUND BALANCES

Three types of fund balances were analyzed for purposes of this report: Legal Balances, Unrestricted Fund Balances and Categorical Fund Balances. The latter two fund balances are part of the Legal Balance, which represents the balances of the Teacher Salary Fund, the Operating Fund and the Debt Service Fund. The most significant component of Unrestricted Funds is Foundation Funding. The overall balances for all districts for the 2009 school year are summarized below:

	Legal Balances	Unrestricted Fund Balances	Categorical Fund Balances
Beginning Balance July 1, 2008	\$613,481,193.51	\$490,482,528.33	\$34,781,359.65
Ending Balance June 30, 2009	\$638,338,723.19	\$511,697,710.27	\$32,463,657.04
Change in Fund Balances	\$24,857,529.68	\$21,215,181.94	-\$2,317,702.61

District specific fund balances are presented at Schedule 6. Additionally, a calculation has been made of the ratio of the Unrestricted Fund Balance to the selected revenues presented at Maps 2 and Schedule 2. The range of this calculated ratio is significant --

from 91.08% to .01%. The relative ratio of Unrestricted Fund Balances to the revenues referenced above is summarized as follows for five groups of school districts (49 districts in each group) ranked in order of the relative magnitude of the district's Unrestricted Fund Balance:

2009 QUINTILE	5	4	3	2	1
Unrestricted Fund Balance as a Percent of Selected 2009 Revenue	49.53%	25.19%	17.14%	11.22%	5.17%
2009 3 QTR AVG ADM	1,026.36	1,284.18	1,443.74	2,335.51	3,272.70
5 Year 3 QTR AVG ADM Change	-4.86%	-4.64%	-4.26%	1.81%	2.07%
% Non-White	52.41%	22.10%	17.29%	14.28%	9.35%
ACTAAP 2009 Proficient and Above Percentage	64.69%	67.98%	68.35%	69.23%	70.40%
Total Mills	34.78	36.54	36.20	36.93	36.95
Property Taxes Per Pupil	\$2,571.04	\$2,176.43	\$2,452.80	\$2,206.22	\$2,546.84

The statewide average ratio of Unrestricted Fund Balance to the 2009 selected revenue amounts is 21.65%. The summary above indicates that a number of smaller districts and/or districts with declining enrollment, lower ACTAAP performance and higher percentages of non-white students are significantly represented in the groups above with the higher fund balance percentages.

INSTRUCTION PERCENTAGE

The percentage of K-12 expenditures for instruction has declined in each of the past five school years as indicated below:

2009	2008	2007	2006	2005
57.87%	57.97%	58.58%	59.82%	60.46%

The K-12 instruction percentage calculated above includes all funding sources and all K-12 expenditures except for Building Acquisition and Debt Service. Routine capital items coded to instruction, instruction support and operational support are included in the calculated percentages above. **The calculated percentage expended from any particular funding source, such as Foundation Funds, would likely differ from the percentages shown above.**

ACTAAP PERFORMANCE

A high level analysis of 2009 school year ACTAAP performance by districts was performed for combined population - proficient and above scores. No analysis is included in this report of the various subgroups within the combined population. A weighted average of proficient and above scores was calculated for each district on the basis of six tests - 4th grade literacy and mathematics, 8th grade literacy and mathematics, end of course algebra and 11th grade literacy. The same calculations were made for each district in the 2008 and

2007 school years for comparative purposes. A map showing the results of these calculations is shown below and on Map 3. Additionally, district specific results are found in Schedule 2 of this report.

2009 QUINTILE	5	4	3	2	1
ACTAAP 2009 PROFICIENT AND ABOVE PERCENT	80.58%	74.43%	69.77%	64.94%	50.92%
NSLA Percent	48.14%	56.34%	58.30%	61.89%	79.48%
% White	89.35%	86.88%	85.89%	77.59%	44.86%
% Non-White	10.65%	13.12%	14.11%	22.41%	55.14%
2009 3 QTR AVG ADM	2812.90	1419.82	1210.68	1974.80	1944.30
ACTAAP 2009 Compared to 2007	11.68%	11.43%	11.38%	9.88%	9.24%
2009 K-12 Instruction Percent	59.59%	58.31%	57.51%	57.84%	55.96%
2009 K-12 Instruction Expenditures per Pupil	\$4,778.73	\$4,866.48	\$4,946.20	\$4,963.37	\$5,607.31

The analysis above indicates the significant relationship between ACTAAP performance with the NSLA and white/non-white percentages.

The summary above represents the simple averages of 49 school districts ranked according to the each district's performance on the six tests, calculated as described above, for the 2009 school year. District specific calculations are shown in Schedule 2 of this report. In particular the relative level of change from 2007 to 2009 may differ from the group average as calculated above.

REGIONAL TRENDS

A summary of the variables discussed in this report by region is shown at Map 7.

FIVE YEAR THREE QUARTER AVERAGE DAILY MEMBERSHIP CHANGE

Map 6 shows the calculated five year change in the three quarter average daily membership (ADM). Unlike other maps in this report based upon five quintile groups of 49 districts, Map 6 is divided into six groups. The six ranges represented on the map include increases and decreases of zero to ten percent, ten to twenty percent, and more than twenty percent. It is noteworthy that there are 55 districts that have a calculated five year decline greater than ten percent.

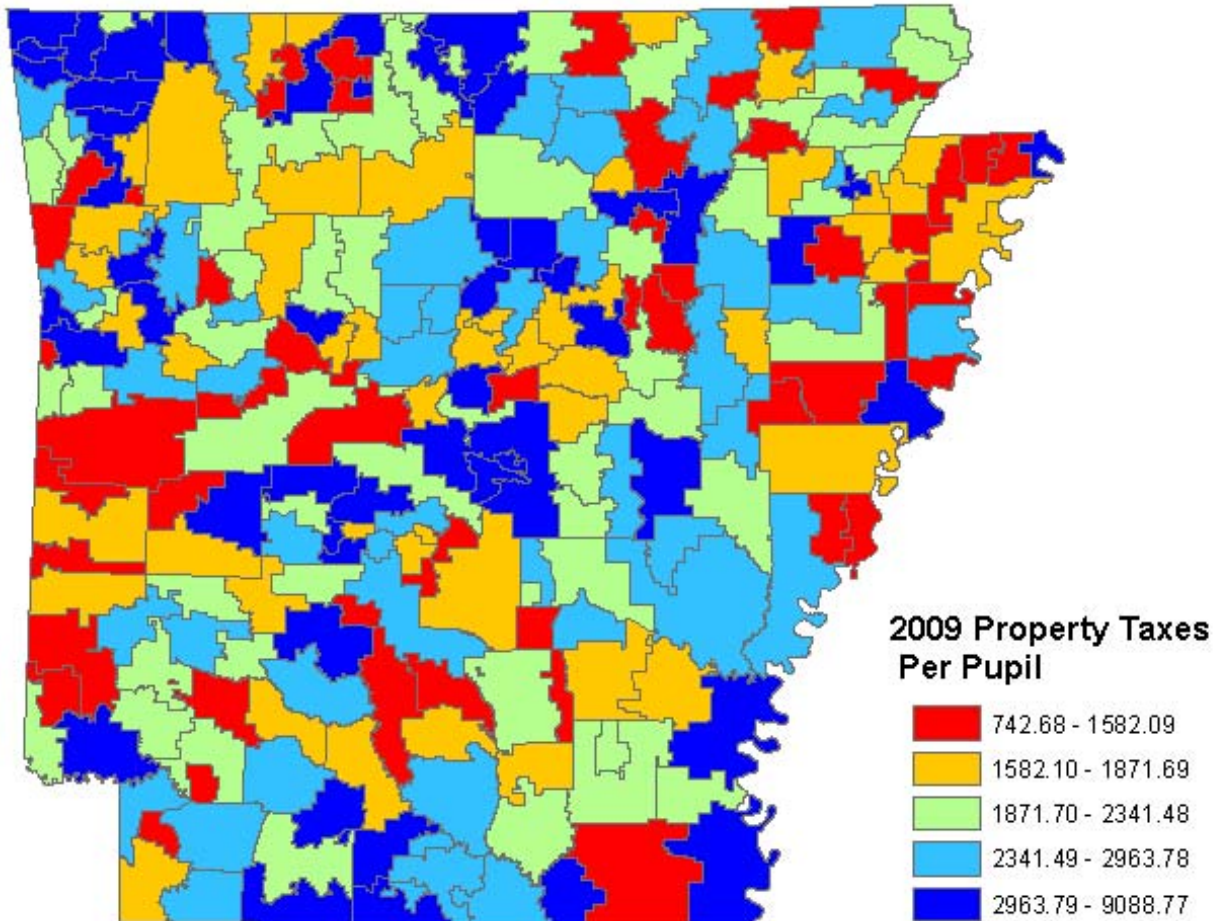
REVENUES AND EXPENDITURES 2009, 2008, AND 2007

	2009	2008	2007
REVENUES			
UNRESTRICTED REVENUES:			
*URT Property Taxes	\$873,797,275.36	\$853,855,377.22	\$751,522,861.66
Foundation Funds Other Than *URT	<u>\$1,766,137,468.00</u>	<u>\$1,791,794,738.87</u>	<u>\$1,810,604,160.00</u>
TOTAL FOUNDATION FUNDS	\$2,639,934,743.36	\$2,645,650,116.09	\$2,562,127,021.66
Property Taxes In Excess Of *URT	\$443,727,927.37	\$386,001,702.84	\$372,318,648.08
Other Unrestricted State Funds	\$122,840,576.52	\$115,279,325.04	\$90,708,268.63
Other Local Funds	\$237,629,959.35	\$253,590,108.06	\$258,619,030.03
Unrestricted Federal Funds	\$11,168,178.81	\$12,593,438.20	\$15,056,394.28
SUBTOTAL UNRESTRICTED REVENUES	\$3,455,301,385.41	\$3,413,114,690.23	\$3,298,829,362.68
RESTRICTED REVENUES:			
State Categorical Grants	\$203,970,766.00	\$200,332,198.00	\$186,486,706.00
Other State Grants	\$83,843,316.78	\$83,633,552.41	\$91,923,162.85
Desegregation Funding	\$67,451,985.75	\$57,373,420.36	\$63,832,552.43
Restricted State Funds - Non-Instructional (Academic Facilities, Etc.)	\$131,100,704.79	\$112,489,960.10	\$73,663,733.34
Federal Funds - Federal Grant Fund	\$342,073,748.28	\$308,154,718.38	\$317,561,644.20
Federal Funds - Food Service Fund	<u>\$154,308,047.49</u>	<u>\$139,510,411.68</u>	<u>\$121,505,168.53</u>
SUBTOTAL RESTRICTED REVENUES	<u>\$982,748,569.09</u>	<u>\$901,494,260.93</u>	<u>\$854,972,967.35</u>
TOTAL REVENUES	<u>\$4,438,049,954.50</u>	<u>\$4,314,608,951.16</u>	<u>\$4,153,802,330.03</u>
EXPENDITURES:			
Instruction	\$2,299,724,452.92	\$2,274,981,627.78	\$2,241,444,342.59
Support Services - Students	\$190,712,518.82	\$184,694,606.34	\$170,556,484.85
Support Services - Instructional Staff	\$291,918,909.13	\$279,847,427.10	\$254,869,619.97
School Administration	\$211,998,925.47	\$210,939,641.48	\$207,123,587.07
Central Administration And Support	\$184,800,991.72	\$188,154,345.03	\$195,328,015.80
Operations And Maintenance	\$392,349,132.14	\$376,559,513.84	\$380,796,133.90
Student Transportation	\$163,360,963.57	\$176,714,261.10	\$167,829,949.99
Food Service Operations	\$221,953,001.39	\$214,483,146.73	\$194,497,498.66
Other Non-Instructional	<u>\$16,988,351.40</u>	<u>\$17,740,628.65</u>	<u>\$14,156,950.29</u>
EXPENDITURES (Excluding Facilities and Debt Service)	<u>\$3,973,807,246.56</u>	<u>\$3,924,115,198.05</u>	<u>\$3,826,602,583.12</u>
Facilities Acquisition And Construction	\$400,251,581.71	\$435,356,825.33	\$426,575,899.15
Debt Service	<u>\$234,418,795.51</u>	<u>\$208,990,962.83</u>	<u>\$199,816,177.72</u>
TOTAL EXPENDITURES	<u>\$4,608,477,623.78</u>	<u>\$4,568,462,986.21</u>	<u>\$4,452,994,659.99</u>

**Uniform Rate of Taxation*

Map 1 – 2009 Property Taxes Per Pupil

See Schedule 1 for District Specific Data.

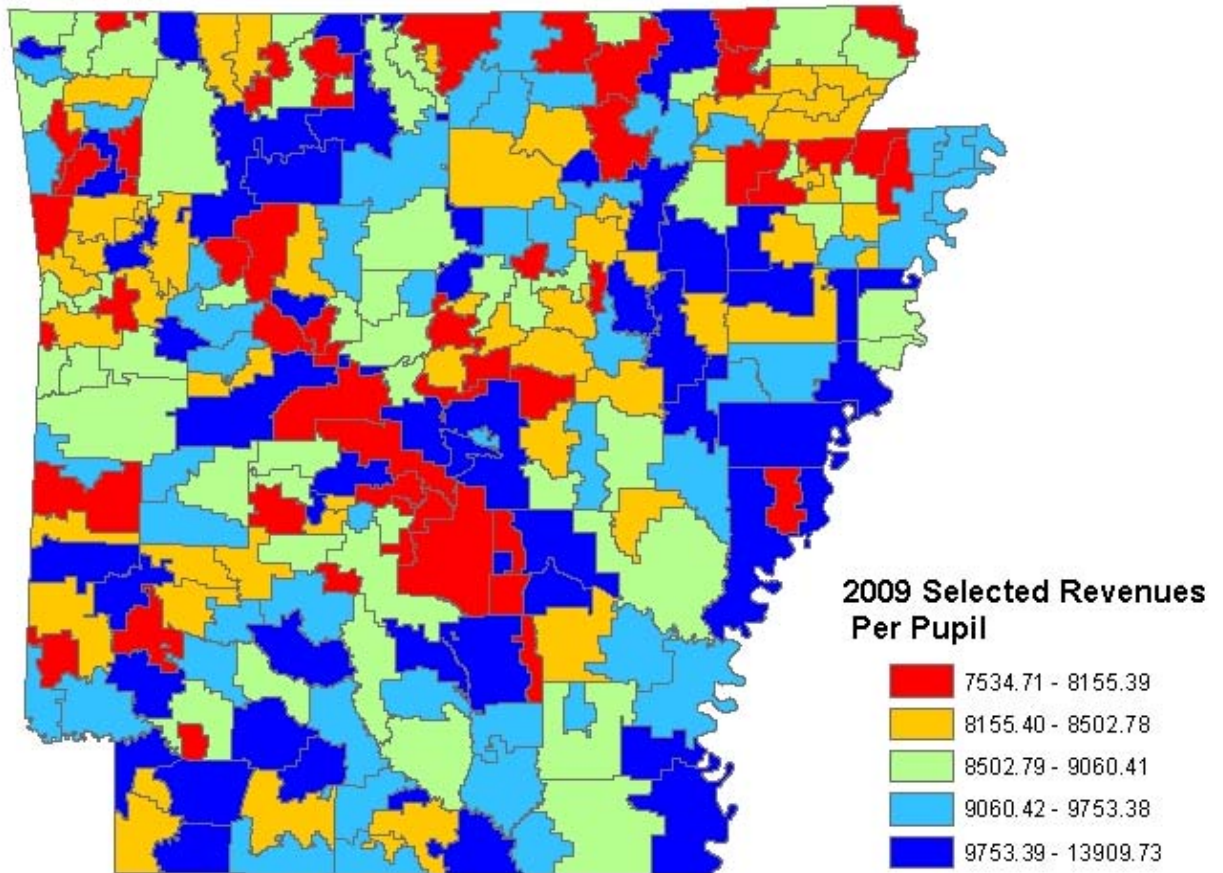


2009 QUINTILE	5	4	3	2	1
2009 PROPERTY TAXES PER PUPIL	\$4,161.30	\$2,667.70	\$2,084.77	\$1,722.52	\$1,335.03
2009 ASSESSED VALUE PER PUPIL	\$116,621.56	\$75,783.92	\$60,487.62	\$50,085.55	\$39,731.82
SELECTED REVENUES PER PUPIL	\$9,586.48	\$9,390.69	\$8,889.86	\$8,793.72	\$8,568.81
UNRESTRICTED FUNDS PER PUPIL	\$8,220.33	\$7,746.77	\$7,383.05	\$7,301.58	\$7,011.36
STATE CATEGORICAL FUNDS PER PUPIL	\$451.59	\$508.71	\$480.11	\$493.85	\$525.03
OTHER STATE RESTRICTED GRANTS (EXCLUDES MAGNET AND ACADEMIC FACILITIES PROGRAMS) PER PUPIL	\$158.02	\$227.24	\$217.60	\$214.92	\$238.74
FEDERAL GRANT FUND REVENUES (EXCLUDES NUTRITION PROGRAMS) PER PUPIL	\$756.54	\$907.97	\$809.10	\$783.38	\$793.68
FOUNDATION FUNDS AS A PERCENT OF SELECTED REVENUES INCLUDED ABOVE	61.97%	63.51%	65.86%	66.96%	67.51%
ACTAAP 2009	69.13%	66.80%	68.70%	69.66%	66.35%
NSLA PERCENT	55.90%	61.45%	60.16%	60.98%	65.66%
% WHITE	73.51%	74.11%	78.36%	82.11%	76.48%
% NON-WHITE	26.49%	25.89%	21.64%	17.89%	23.52%

Map prepared by Bureau of Legislative Research.
School District Boundaries from Arkansas Geographical Information Office.

Map 2 – 2009 Selected Revenues Per Pupil

See Schedule 1 for District Specific Data.

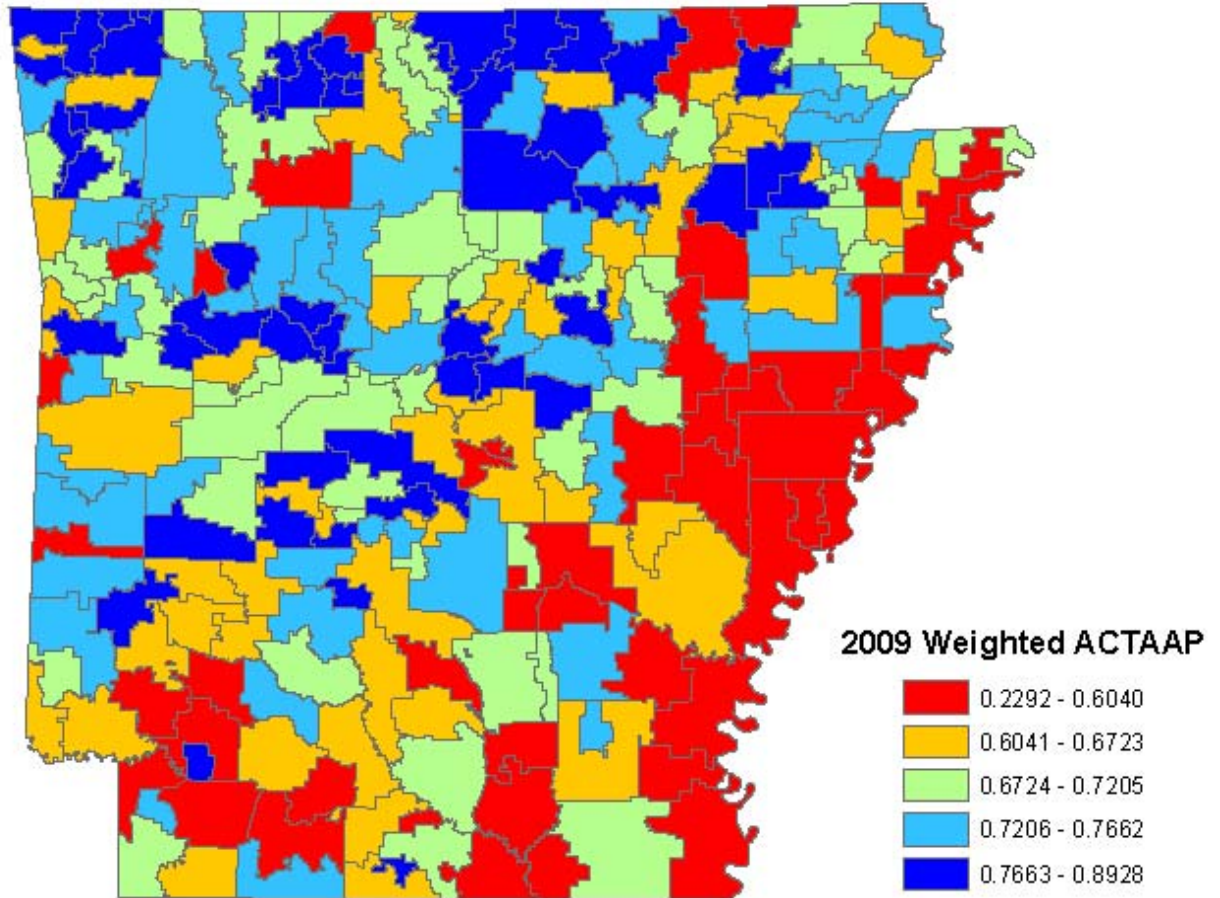


2009 QUINTILE	5	4	3	2	1
SELECTED REVENUES PER PUPIL	\$10,753.30	\$9,397.29	\$8,810.57	\$8,359.82	\$7,908.57
UNRESTRICTED FUNDS PER PUPIL	\$8,342.65	\$7,719.15	\$7,458.73	\$7,184.41	\$6,958.15
STATE CATEGORICAL FUNDS PER PUPIL OTHER STATE RESTRICTED GRANTS (EXCLUDES MAGNET PROGRAMS AND ACADEMIC FACILITIES)	\$774.72	\$567.27	\$430.98	\$375.41	\$310.91
FEDERAL GRANT FUND REVENUES	\$1,262.94	\$884.92	\$752.19	\$640.09	\$510.52
FOUNDATION FUNDS AS A PERCENT OF SELECTED REVENUES INCLUDED ABOVE	56.77%	62.06%	66.21%	68.86%	71.89%
2009 PROPERTY TAXES PER PUPIL	\$3,095.11	\$2,597.69	\$2,437.03	\$2,101.59	\$1,739.91
ACTAAP 2009	58.32%	66.81%	69.67%	71.86%	73.99%
NSLA PERCENT	74.62%	65.51%	59.99%	55.33%	48.70%
% WHITE	57.99%	71.82%	81.27%	83.25%	90.25%
% NON-WHITE	42.01%	28.18%	18.73%	16.75%	9.75%

Map prepared by Bureau of Legislative Research.
School District Boundaries from Arkansas Geographical Information Office.

Map 3 – 2009 Weighted ACTAAP Analysis

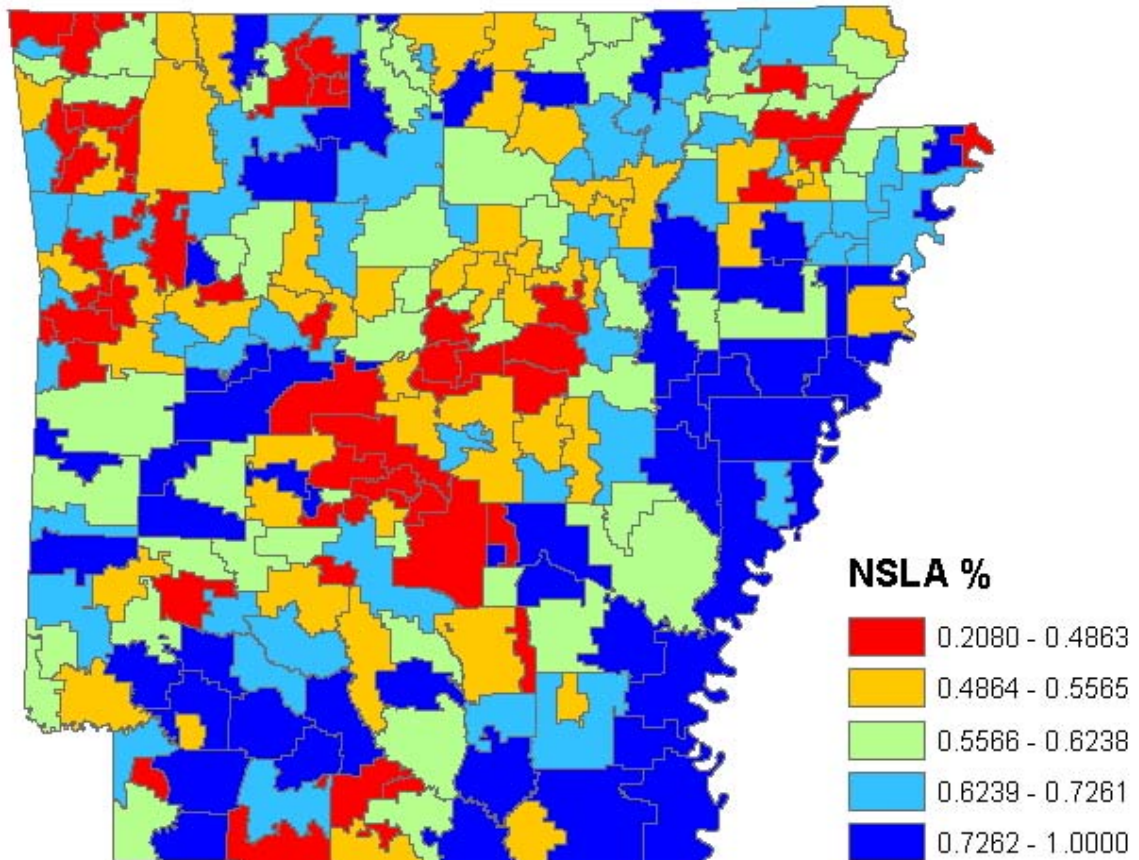
See Schedule 2 for District Specific Data 2009. Data not available for Mena School District. 2008 data has been used for Mena School District for presentation on this map.



2009 QUINTILE	5	4	3	2	1
ACTAAP 2009 PROFICIENT AND ABOVE %	80.58%	74.43%	69.77%	64.94%	50.92%
NSLA %	48.14%	56.34%	58.30%	61.89%	79.48%
% WHITE	89.35%	86.88%	85.89%	77.59%	44.86%
% NON WHITE	10.65%	13.12%	14.11%	22.41%	55.14%
2009 3 QTR AVG ADM	2812.90	1419.82	1210.68	1974.80	1944.30
ACTAAP 2009 COMPARED TO 2007	11.68%	11.43%	11.38%	9.88%	9.24%
2009 K-12 INSTRUCTION PERCENT	59.59%	58.31%	57.51%	57.84%	55.96%
2009 K-12 INSTRUCTION EXPENDITURES PER PUPIL	\$4,778.73	\$4,866.48	\$4,946.20	\$4,963.37	\$5,607.31

Map 4 – 2009 NSLA Percent

See Schedule 2 for District Specific Data.

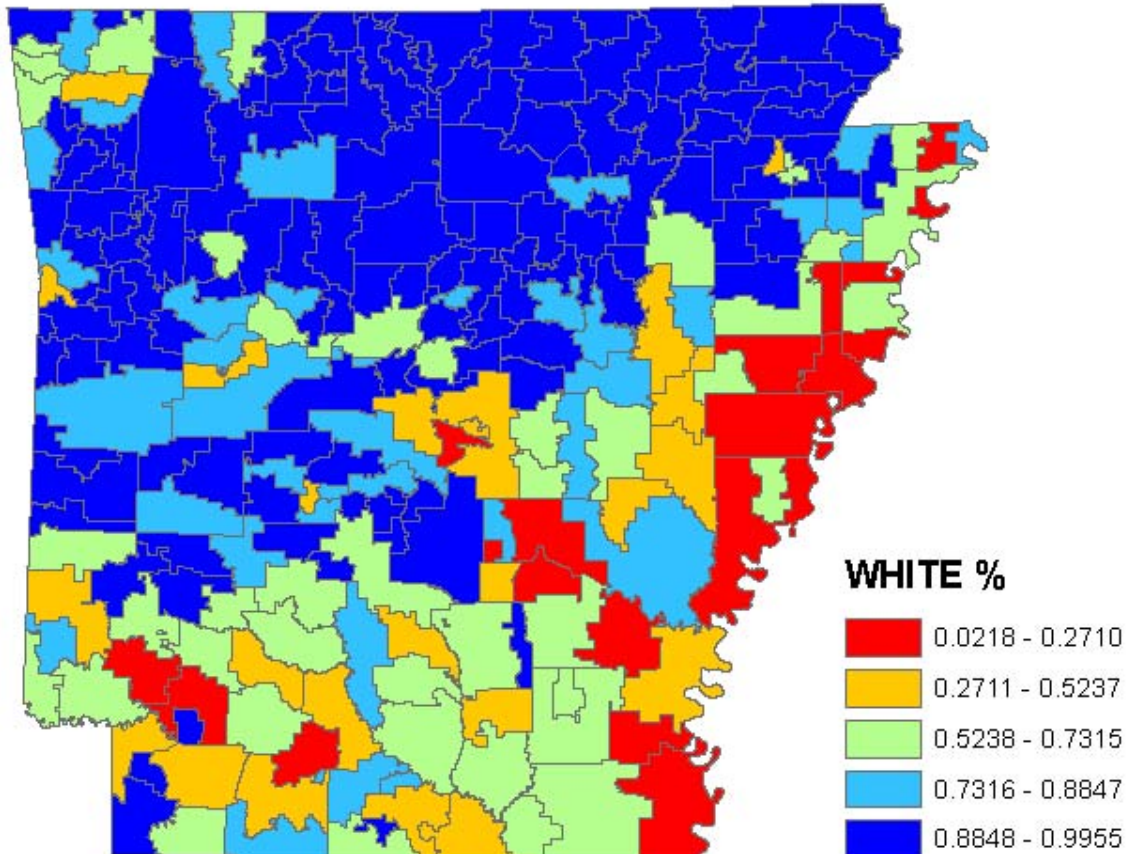


2009 QUINTILE	5	4	3	2	1
NSLA %	84.82%	67.90%	59.47%	52.31%	39.66%
2009 3 QTR AVG ADM	1,234.94	1,942.64	1,839.97	1,858.21	2,486.75
% WHITE	47.59%	77.90%	82.71%	85.72%	90.65%
% NON WHITE	52.41%	22.10%	17.29%	14.28%	9.35%
ACTAAP 2009 PROFICIENT AND ABOVE %	55.68%	66.31%	70.33%	72.40%	75.90%
ACTAAP 2009 COMPARED TO 2007	11.23%	10.44%	10.93%	10.83%	10.50%
2009 Total K-12 Expenditures (Less Facilities and Debt Service) Per Pupil	\$10,136.16	\$8,910.90	\$8,233.03	\$8,486.79	\$7,875.37
2009 K-12 Instruction Expenditures Per Pupil	\$5,639.11	\$5,047.80	\$4,894.78	\$4,919.26	\$4,661.02
Instruction % of 2009 Total K-12 Expenditures (Less Facilities and Debt Service)	55.70%	56.78%	59.46%	58.03%	59.24%

Map prepared by Bureau of Legislative Research.
 School District Boundaries from Arkansas Geographical Information Office.

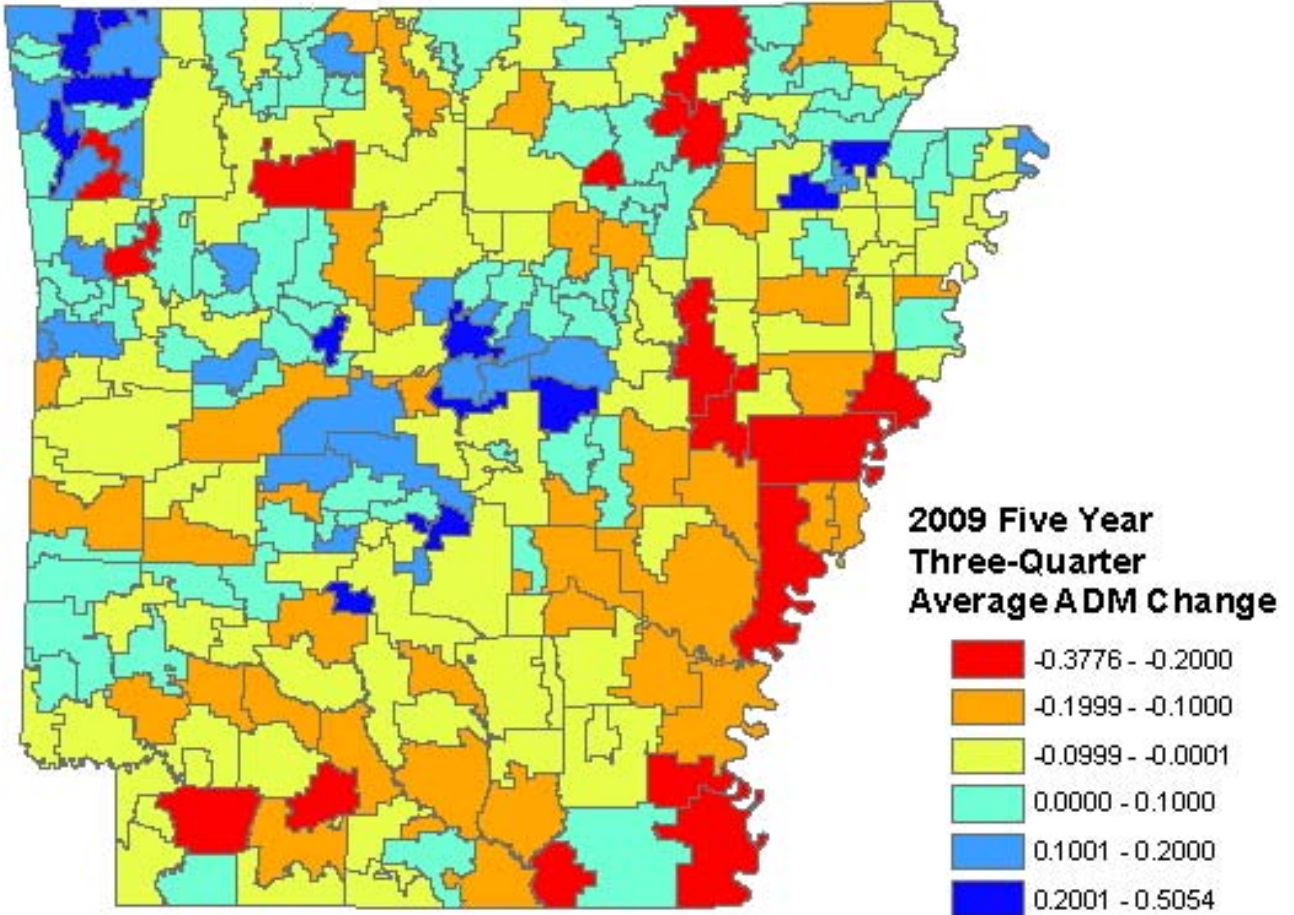
Map 5 – 2009 Percentage White

See Schedule 2 for District Specific Data.



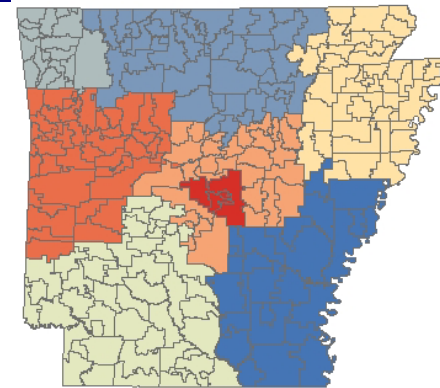
2009 QUINTILE	5	4	3	2	1
% WHITE	97.85%	95.03%	88.51%	69.30%	33.89%
% NON-WHITE	2.15%	4.97%	11.49%	30.70%	66.11%
2009 3 QTR. AVG ADM	848.18	1,444.24	1,656.31	1,853.17	3,560.59
NSLA PERCENT	59.34%	53.30%	52.16%	61.07%	78.28%
ACTAAP 2009 PROFICIENT AND ABOVE %	71.27%	73.68%	72.59%	68.49%	54.66%
ACTAAP 2009 COMPARED TO 2007	9.15%	9.90%	11.61%	12.15%	11.06%
2009 Total K-12 Expenditures (Less Facilities and Debt Service) Per Pupil	\$8,693.27	\$8,076.44	\$8,418.68	\$8,669.45	\$9,784.41
2007 K-12 Instruction Expenditures Per Pupil	\$5,048.75	\$4,764.70	\$4,902.66	\$4,932.37	\$5,513.49
Instruction % of 2009 Total K-12 Expenditures (Less Facilities and Debt Service)	58.25%	59.07%	58.35%	56.98%	56.56%

Map 6 – 2009 Five Year Three-Quarter Average ADM Change



Map 7 – 2009 Regional Summary

See Schedules 1 and 2 for District Specific Data



2009 REGIONS

- Southeast
- North Central
- Northwest
- Southwest
- Northeast
- Central
- West
- Pulaski

REGION	Northwest	North Central	Central	West	Southwest	Northeast	Pulaski	Southeast
NUMBER OF DISTRICTS	16	40	31	37	49	44	3	25
2009 3 QTR AVG. ADM	4471.05	977.19	2169.65	1698.22	1274.81	1502.46	16823.83	1559.96
FIVE YEAR ADM CHANGE	12.33%	-3.77%	6.15%	0.95%	-4.60%	-2.90%	-1.25%	-12.81%
NSLA %	48.41%	60.16%	50.05%	60.04%	60.08%	67.75%	60.75%	73.70%
WHITE %	80.00%	95.01%	88.02%	87.11%	68.01%	74.17%	35.61%	44.40%
Non-WHITE %	20.00%	4.99%	11.98%	12.89%	31.99%	25.83%	64.39%	55.60%
2009 ACTAAP	75.72%	73.63%	72.06%	71.12%	66.24%	64.40%	58.66%	56.54%
2009-2007 ACTAAP CHANGE	11.98%	10.99%	8.54%	9.45%	12.47%	10.53%	12.86%	11.33%
2009 K-12 INSTRUCTION %	58.21%	57.90%	58.55%	57.84%	58.01%	58.17%	55.68%	55.99%
2009 K-12 INSTRUCTION PP	\$4,718.56	\$5,152.08	\$4,633.46	\$4,921.23	\$5,095.02	\$5,113.97	\$5,765.60	\$5,346.62
TOTAL MILLAGE	39.46	34.71	37.46	37.43	36.33	34.80	42.67	35.34
PROPERTY TAXES PP	\$3,177.23	\$2,722.05	\$2,023.92	\$2,130.22	\$2,555.68	\$2,091.75	\$4,576.87	\$2,172.84
UNRESTRICTED FUNDS PP	\$7,844.98	\$7,741.55	\$7,298.75	\$7,379.59	\$7,669.98	\$7,347.29	\$9,108.56	\$7,382.74
CATEGORICAL FUNDS PP	\$380.13	\$470.58	\$340.50	\$456.58	\$483.89	\$533.86	\$462.52	\$782.52
OTHER STATE GRANTS PP	\$151.58	\$225.85	\$148.68	\$212.99	\$234.95	\$213.48	\$204.55	\$252.03
FEDERAL GRANT FUND REVENUES PP	\$470.79	\$784.15	\$604.66	\$759.76	\$786.96	\$949.40	\$914.80	\$1,185.96
SUBTOTAL SELECTED REVENUES PP	\$8,847.48	\$9,222.13	\$8,392.59	\$8,808.92	\$9,175.78	\$9,044.04	\$10,690.43	\$9,603.24
FOUNDATION FUNDS AS A PERCENT SELECTED REVENUES	66.22%	64.46%	69.40%	64.74%	64.56%	65.00%	60.15%	63.01%
2009 UNRESTRICTED FUND BALANCE AS A PERCENTAGE OF SELECTED REVENUES	10.42%	22.23%	23.00%	21.00%	19.83%	25.07%	5.19%	26.69%

Map prepared by Bureau of Legislative Research.
 School District Boundaries from Arkansas Geographical Information Office.

SCHEDULE 1 – 2009 PROPERTY TAXES AND SELECTED REVENUES BY DISTRICT

SCHEDULE 1 - 2009 PROPERTY TAXES AND SELECTED REVENUES BY DISTRICT		Assessed Value Per Pupil	TOTAL MILLS	Property Taxes Per Pupil	Unrestricted Funds Per Pupil	Restricted State Funds (Excludes Magnet Program and Academic Facilities) Per Pupil	Other Restricted State Funds (Excludes Magnet Program and Academic Facilities) Per Pupil	Restricted Federal Grant Funds (excludes Nutrition Programs) Per Pupil	Selected Revenues
DISTRICT LEA	DISTRICT								
0101000	DEWITT SCHOOL DIST.	\$80,977.01	34.50	\$2,864.32	\$7,652.46	\$356.81	\$453.42	\$597.72	\$9,060.41
0104000	STUTTGART SCHOOL DIST.	\$89,637.48	31.90	\$2,770.76	\$7,010.68	\$426.71	\$100.54	\$755.26	\$8,293.19
0201000	CROSSETT SCHOOL DIST.	\$110,532.82	36.00	\$3,881.51	\$8,256.45	\$392.36	\$62.02	\$826.26	\$9,537.09
0203000	HAMBURG SCHOOL DIST.	\$46,576.21	35.50	\$1,531.72	\$6,953.21	\$892.52	\$243.66	\$840.82	\$8,930.21
0302000	COTTER SCHOOL DIST.	\$68,331.39	32.70	\$2,115.89	\$6,892.58	\$365.26	\$180.71	\$745.80	\$8,184.36
0303000	MOUNTAIN HOME SCHOOL DIST.	\$123,797.21	29.20	\$3,505.32	\$7,022.67	\$359.27	\$30.66	\$597.44	\$8,010.04
0304000	NORFORK SCHOOL DIST.	\$116,486.52	34.40	\$3,623.89	\$8,082.27	\$852.41	\$28.35	\$751.52	\$9,714.54
0401000	BENTONVILLE SCHOOL DIST.	\$120,087.82	40.10	\$4,607.83	\$8,404.78	\$192.84	\$97.91	\$313.15	\$9,008.68
0402000	DECATUR SCHOOL DIST.	\$87,815.99	39.90	\$3,512.53	\$9,326.00	\$942.35	\$167.41	\$601.43	\$11,037.19
0403000	GENTRY SCHOOL DIST.	\$96,774.20	42.90	\$4,085.13	\$8,485.59	\$411.31	\$196.87	\$444.55	\$9,538.31
0404000	GRAVETTE SCHOOL DIST.	\$140,033.46	37.20	\$5,051.98	\$8,230.23	\$306.77	\$46.98	\$377.22	\$8,961.19
0405000	ROGERS SCHOOL DIST.	\$110,524.89	38.70	\$4,175.09	\$7,938.11	\$456.61	\$87.46	\$449.21	\$8,931.39
0406000	SILOAM SPRINGS SCHOOL DIST.	\$76,742.28	39.60	\$2,886.90	\$7,758.67	\$396.59	\$50.38	\$416.01	\$8,621.65
0407000	PEA RIDGE SCHOOL DIST.	\$52,532.01	45.00	\$2,146.70	\$7,326.68	\$287.37	\$98.16	\$323.91	\$8,036.13
0501000	ALPENA SCHOOL DIST.	\$40,994.73	33.60	\$1,421.63	\$6,780.96	\$299.44	\$102.71	\$843.87	\$8,026.98
0502000	BERGMAN SCHOOL DIST.	\$39,908.80	32.00	\$1,241.81	\$6,676.84	\$294.03	\$170.54	\$443.15	\$7,584.56
0503000	HARRISON SCHOOL DIST.	\$102,125.28	34.30	\$3,629.15	\$7,691.99	\$306.60	\$178.63	\$664.67	\$8,841.88
0504000	OMAHA SCHOOL DIST.	\$59,442.05	38.10	\$1,830.44	\$7,422.08	\$594.54	\$194.86	\$723.36	\$8,934.86
0505000	VALLEY SPRINGS SCHOOL DIST.	\$45,778.17	32.80	\$1,465.01	\$6,902.11	\$273.51	\$206.67	\$630.31	\$8,012.59
0506000	LEAD HILL SCHOOL DIST.	\$81,063.73	39.00	\$3,099.63	\$8,038.03	\$821.74	\$246.19	\$719.53	\$9,825.48
0601000	HERMITAGE SCHOOL DIST.	\$59,267.11	36.50	\$1,873.73	\$7,162.34	\$949.10	\$175.39	\$988.80	\$9,275.64
0602000	WARREN SCHOOL DIST.	\$51,519.93	36.50	\$1,764.20	\$7,254.28	\$442.42	\$898.47	\$966.74	\$9,561.91
0701000	HAMPTON SCHOOL DIST.	\$104,452.45	30.00	\$2,806.82	\$7,684.36	\$394.21	\$165.19	\$665.02	\$8,908.79
0801000	BERRYVILLE SCHOOL DIST.	\$61,312.91	38.10	\$2,352.12	\$7,321.84	\$368.31	\$146.09	\$654.13	\$8,490.37
0802000	EUREKA SPRINGS SCHOOLDIST.	\$268,131.02	34.20	\$8,819.18	\$9,753.67	\$321.87	\$420.30	\$968.36	\$11,464.20
0803000	GREEN FOREST SCHOOL DIST.	\$54,042.47	32.20	\$1,704.17	\$6,891.03	\$611.40	\$243.66	\$584.02	\$8,330.10
0901000	DERMOTT SCHOOL DIST.	\$63,490.95	36.80	\$2,210.65	\$7,664.74	\$1,584.73	\$1,047.30	\$1,824.11	\$12,120.87
0903000	LAKESIDE SCHOOL DIST.	\$86,725.65	39.80	\$3,165.10	\$7,730.18	\$911.73	\$86.83	\$1,864.37	\$10,593.11
1002000	ARKADELPHIA SCHOOL DIST.	\$85,615.80	38.90	\$3,407.89	\$7,985.38	\$324.77	\$100.99	\$809.52	\$9,220.65
1003000	GURDON SCHOOL DIST.	\$71,273.37	36.00	\$2,589.97	\$8,708.51	\$864.07	\$168.03	\$932.09	\$10,672.69
1101000	CORNING SCHOOL DIST.	\$79,401.83	31.50	\$2,344.11	\$7,034.98	\$392.86	\$100.08	\$986.56	\$8,514.49
1104000	PIGGOTT SCHOOL DIST.	\$57,300.12	35.40	\$1,915.85	\$6,915.38	\$299.81	\$170.69	\$400.37	\$7,786.26
1106000	RECTOR SCHOOL DIST.	\$63,684.33	38.50	\$2,341.48	\$7,861.53	\$317.41	\$116.03	\$608.86	\$8,903.83
1201000	CONCORD SCHOOL DIST.	\$77,239.13	37.00	\$2,788.18	\$8,426.55	\$387.40	\$85.56	\$827.06	\$9,726.57
1202000	HEBER SPRINGS SCHOOL DIST.	\$121,831.14	29.40	\$3,458.20	\$7,088.33	\$354.85	\$114.25	\$597.55	\$8,154.98

SCHEDULE 1 - 2009 PROPERTY TAXES AND SELECTED REVENUES BY DISTRICT

SCHEDULE 1 - 2009 PROPERTY TAXES AND SELECTED REVENUES BY DISTRICT				Other Restricted State Funds (Excludes Magnet Program and Academic Facilities) Per Pupil			Restricted Federal Grant Funds (excludes Nutrition Programs) Per Pupil		Selected Revenues
DISTRICT LEA	DISTRICT	Assessed Value Per Pupil	TOTAL MILLS	Property Taxes Per Pupil	Unrestricted Funds Per Pupil	Restricted State Categorical Funds Per Pupi	Program and Academic Facilities) Per Pupil	Grant Funds (excludes Nutrition Programs) Per Pupil	Selected Revenues
1203000	QUITMAN SCHOOL DIST.	\$84,864.63	33.90	\$2,894.34	\$7,475.21	\$320.32	\$166.73	\$605.26	\$8,567.52
1204000	WEST SIDE SCHOOL DIST.	\$218,063.02	28.70	\$6,118.04	\$8,428.24	\$399.79	\$34.92	\$680.92	\$9,543.88
1304000	WOODLAWN SCHOOL DIST.	\$41,969.69	35.00	\$1,384.21	\$6,998.61	\$229.88	\$76.63	\$378.65	\$7,683.76
1305000	CLEVELAND COUNTY SCHOOL DIST.	\$58,447.24	38.10	\$2,080.83	\$7,779.06	\$360.23	\$156.88	\$1,752.94	\$10,049.11
1402000	MAGNOLIA SCHOOL DIST.	\$78,607.29	29.60	\$2,247.20	\$7,056.10	\$387.38	\$145.95	\$808.07	\$8,397.50
1408000	EMERSON-TAYLOR SCHOOL DIST.	\$94,598.72	37.40	\$3,361.38	\$8,185.94	\$236.52	\$485.19	\$838.58	\$9,746.23
1503000	NEMO VISTA SCHOOL DIST.	\$51,749.80	43.10	\$2,675.91	\$8,102.72	\$423.70	\$94.35	\$636.35	\$9,257.12
1505000	WONDERVIEW SCHOOL DIST.	\$75,359.67	33.80	\$2,705.12	\$7,588.52	\$362.08	\$120.48	\$710.92	\$8,782.01
1507000	SO. CONWAY CO. SCHOOL DIST.	\$76,262.98	35.40	\$2,619.31	\$7,234.10	\$366.17	\$478.24	\$761.06	\$8,839.57
1601000	BAY SCHOOL DIST.	\$49,355.25	37.70	\$1,822.38	\$7,370.61	\$284.72	\$161.10	\$552.89	\$8,369.32
1602000	WESTSIDE CONS. SCHOOL DIST.	\$53,846.94	32.20	\$1,668.98	\$6,931.16	\$316.12	\$229.63	\$502.98	\$7,979.89
1603000	BROOKLAND SCHOOL DIST.	\$54,549.65	37.00	\$1,970.32	\$7,141.79	\$241.60	\$215.87	\$427.57	\$8,026.83
1605000	BUFFALO IS. CENTRAL SCH. DIST.	\$54,380.68	33.00	\$1,733.61	\$6,970.77	\$362.19	\$99.29	\$578.38	\$8,010.64
1608000	JONESBORO SCHOOL DIST.	\$91,641.67	30.00	\$2,649.10	\$6,850.33	\$453.49	\$119.73	\$1,380.29	\$8,803.84
1611000	NETTLETON SCHOOL DIST.	\$101,070.40	35.00	\$3,411.11	\$7,381.55	\$382.83	\$70.31	\$560.35	\$8,395.03
1612000	VALLEY VIEW SCHOOL DIST.	\$59,213.72	37.60	\$2,186.96	\$7,213.69	\$154.38	\$121.17	\$271.06	\$7,760.31
1613000	RIVERSIDE SCHOOL DIST.	\$43,869.48	41.10	\$1,758.59	\$7,387.62	\$334.24	\$114.01	\$800.09	\$8,635.97
1701000	ALMA SCHOOL DIST.	\$41,797.38	43.40	\$1,683.70	\$7,209.30	\$318.28	\$268.71	\$486.67	\$8,282.96
1702000	CEDARVILLE SCHOOL DIST.	\$36,051.16	36.00	\$1,250.03	\$6,715.01	\$426.42	\$108.55	\$729.02	\$7,979.00
1703000	MOUNTAINBURG SCHOOL DIST.	\$43,442.64	39.10	\$1,688.86	\$7,293.92	\$350.95	\$60.69	\$692.64	\$8,398.19
1704000	MULBERRY SCHOOL DIST.	\$100,599.96	36.40	\$3,481.06	\$8,807.89	\$514.59	\$202.54	\$840.42	\$10,365.44
1705000	VAN BUREN SCHOOL DIST.	\$63,213.19	39.60	\$2,439.94	\$7,236.46	\$364.18	\$193.74	\$598.26	\$8,392.64
1802000	EARLE SCHOOL DIST.	\$31,784.10	44.80	\$1,471.64	\$8,487.52	\$1,575.77	\$566.71	\$1,862.27	\$12,492.26
1803000	WEST MEMPHIS SCHOOL DIST.	\$44,774.98	29.00	\$1,362.44	\$6,617.75	\$874.39	\$66.21	\$1,178.06	\$8,736.41
1804000	MARION SCHOOL DIST.	\$66,461.08	40.70	\$2,644.70	\$7,996.29	\$309.36	\$163.98	\$502.27	\$8,971.90
1805000	TURRELL SCHOOL DIST.	\$42,316.11	39.00	\$1,582.09	\$6,919.42	\$808.06	\$527.98	\$2,051.39	\$10,306.86
1901000	CROSS COUNTY SCHOOL DIST.	\$75,469.22	39.90	\$2,847.59	\$7,578.48	\$639.53	\$1,454.44	\$1,420.55	\$11,093.01
1905000	WYNNE SCHOOL DIST.	\$51,915.50	35.00	\$1,883.54	\$7,084.80	\$346.41	\$122.48	\$742.86	\$8,296.55
2002000	FORDYCE SCHOOL DIST.	\$50,704.53	33.50	\$1,568.31	\$7,066.65	\$330.91	\$1,967.78	\$884.36	\$10,249.70
2104000	DUMAS SCHOOL DIST.	\$50,902.93	34.50	\$1,775.79	\$7,067.67	\$934.26	\$140.49	\$1,127.25	\$9,269.66
2105000	MCGEHEE SCHOOL DIST.	\$101,732.98	34.50	\$3,324.12	\$7,594.50	\$837.80	\$101.31	\$1,162.98	\$9,696.58
2202000	DREW CENTRAL SCHOOL DIST.	\$58,678.53	35.60	\$1,999.81	\$7,015.56	\$729.76	\$245.63	\$909.04	\$8,899.99
2203000	MONTICELLO SCHOOL DIST.	\$51,322.99	39.90	\$1,953.89	\$7,325.80	\$423.34	\$567.27	\$928.88	\$9,245.29
2301000	CONWAY SCHOOL DIST.	\$93,231.15	36.20	\$3,204.17	\$7,283.64	\$263.02	\$340.34	\$536.76	\$8,423.76
2303000	GREENBRIER SCHOOL DIST.	\$48,390.27	38.50	\$1,871.69	\$7,193.04	\$238.98	\$50.69	\$344.05	\$7,826.76
2304000	GUY-PERKINS SCHOOL DIST.	\$43,756.29	41.00	\$1,694.23	\$7,077.26	\$406.24	\$153.46	\$545.79	\$8,182.76

SCHEDULE 1 - 2009 PROPERTY TAXES AND SELECTED REVENUES BY DISTRICT

SCHEDULE 1 - 2009 PROPERTY TAXES AND SELECTED REVENUES BY DISTRICT		Assessed Value Per Pupil	TOTAL MILLS	Property Taxes Per Pupil	Unrestricted Funds Per Pupil	Restricted State Funds Per Pupil	Other Restricted State Funds (Excludes Magnet Program and Academic Facilities) Per Pupil	Restricted Federal Grant Funds (excludes Nutrition Programs) Per Pupil	Selected Revenues
DISTRICT LEA	DISTRICT								
2305000	MAYFLOWER SCHOOL DIST.	\$54,678.78	40.50	\$1,993.60	\$7,066.03	\$288.86	\$214.85	\$502.15	\$8,071.89
2306000	MT. VERNON/ENOLA SCHOOL DIST.	\$46,049.88	37.40	\$1,676.90	\$7,191.42	\$476.71	\$77.37	\$532.01	\$8,277.51
2307000	VILONIA SCHOOL DIST.	\$37,925.97	39.20	\$1,474.06	\$7,141.35	\$249.86	\$234.56	\$492.89	\$8,118.65
2402000	CHARLESTON SCHOOL DIST.	\$53,016.69	37.50	\$1,723.35	\$7,009.23	\$218.36	\$45.39	\$450.33	\$7,723.30
2403000	COUNTY LINE SCHOOL DIST.	\$98,114.65	36.10	\$3,357.47	\$7,276.20	\$265.93	\$91.26	\$660.70	\$8,294.09
2404000	OZARK SCHOOL DIST.	\$77,986.73	33.00	\$2,497.00	\$7,180.00	\$345.80	\$84.34	\$683.16	\$8,293.30
2501000	MAMMOTH SPRING SCHOOL DIST.	\$59,443.97	30.00	\$1,783.22	\$7,408.94	\$443.35	\$121.29	\$799.71	\$8,773.30
2502000	SALEM SCHOOL DIST.	\$51,797.96	31.50	\$1,494.53	\$6,906.74	\$386.12	\$129.41	\$672.41	\$8,094.67
2503000	VIOLA SCHOOL DIST.	\$72,995.18	29.80	\$2,064.88	\$7,855.39	\$340.20	\$112.44	\$894.25	\$9,202.27
2601000	CUTTER-MORNING STAR SCH. DIST.	\$49,702.92	39.80	\$1,688.77	\$7,354.33	\$335.41	\$231.42	\$571.94	\$8,493.10
2602000	FOUNTAIN LAKE SCHOOL DIST.	\$265,606.48	34.80	\$9,088.77	\$10,140.54	\$306.55	\$62.70	\$742.42	\$11,252.20
2603000	HOT SPRINGS SCHOOL DIST.	\$122,985.86	37.70	\$4,636.45	\$8,009.71	\$1,026.49	\$113.91	\$1,345.36	\$10,495.47
2604000	JESSIEVILLE SCHOOL DIST.	\$130,670.87	34.00	\$4,440.76	\$7,967.70	\$364.06	\$68.39	\$536.45	\$8,936.60
2605000	LAKE HAMILTON SCHOOL DIST.	\$73,788.34	36.70	\$2,720.73	\$7,242.15	\$284.88	\$92.39	\$468.99	\$8,088.42
2606000	LAKESIDE SCHOOL DIST.	\$107,015.07	35.80	\$3,851.54	\$7,445.19	\$252.09	\$77.37	\$462.10	\$8,236.76
2607000	MOUNTAIN PINE SCHOOL DIST.	\$68,316.08	30.90	\$2,290.23	\$7,010.11	\$798.79	\$141.33	\$844.03	\$8,794.26
2703000	POYEN SCHOOL DIST.	\$17,855.33	46.80	\$815.80	\$6,993.07	\$329.33	\$79.41	\$214.61	\$7,616.41
2705000	SHERIDAN SCHOOL DIST.	\$56,617.89	32.20	\$1,762.01	\$6,746.84	\$284.93	\$118.29	\$460.36	\$7,610.42
2803000	MARMADUKE SCHOOL DIST.	\$48,096.34	29.10	\$1,419.70	\$6,875.54	\$335.36	\$77.45	\$871.38	\$8,159.73
2807000	GREENE CO. TECH SCHOOL DIST.	\$60,303.75	37.50	\$2,187.42	\$7,402.06	\$312.18	\$68.55	\$627.04	\$8,409.84
2808000	PARAGOULD SCHOOL DIST.	\$67,401.32	32.70	\$2,355.08	\$6,985.25	\$341.07	\$139.90	\$885.64	\$8,351.86
2901000	BLEVINS SCHOOL DIST.	\$38,827.92	31.30	\$1,319.57	\$7,504.11	\$691.56	\$108.45	\$967.04	\$9,271.16
2903000	HOPE SCHOOL DIST.	\$65,568.08	34.70	\$2,205.13	\$7,037.61	\$872.13	\$146.15	\$992.96	\$9,048.85
2906000	SPRING HILL SCHOOL DIST.	\$26,013.52	41.80	\$1,023.94	\$7,320.36	\$263.46	\$225.46	\$341.02	\$8,150.30
3001000	BISMARCK SCHOOL DIST.	\$51,943.48	41.00	\$2,057.26	\$7,915.24	\$397.75	\$66.33	\$595.01	\$8,974.33
3002000	GLEN ROSE SCHOOL DIST.	\$42,058.04	38.20	\$1,584.96	\$7,455.71	\$294.60	\$233.08	\$569.31	\$8,552.70
3003000	MAGNET COVE SCHOOL DIST.	\$79,310.75	39.20	\$2,914.95	\$8,619.65	\$240.18	\$90.89	\$501.08	\$9,451.80
3004000	MALVERN SCHOOL DIST.	\$82,099.22	37.70	\$2,798.89	\$7,286.14	\$438.17	\$206.37	\$1,036.00	\$8,966.68
3005000	OUACHITA SCHOOL DIST.	\$38,135.25	40.80	\$1,563.05	\$7,100.67	\$265.29	\$219.89	\$511.37	\$8,097.22
3102000	DIERKS SCHOOL DIST.	\$70,776.71	43.00	\$2,887.58	\$8,430.03	\$326.11	\$213.49	\$889.64	\$9,859.26
3104000	MINERAL SPRINGS SCHOOL DIST.	\$62,521.84	34.00	\$2,040.59	\$7,792.32	\$867.12	\$155.90	\$1,008.92	\$9,824.25
3105000	NASHVILLE SCHOOL DIST.	\$65,289.50	31.70	\$1,978.15	\$6,646.51	\$434.88	\$135.18	\$659.92	\$7,876.50
3201000	BATESVILLE SCHOOL DIST.	\$80,566.40	38.80	\$3,011.64	\$7,678.44	\$380.78	\$209.94	\$793.62	\$9,062.78
3203000	CUSHMAN SCHOOL DIST.	\$46,953.36	39.00	\$1,809.46	\$9,643.83	\$505.81	\$396.42	\$843.42	\$11,389.48
3209000	SOUTHSIDE SCHOOL DIST.	\$32,273.75	40.20	\$1,267.52	\$7,213.82	\$371.87	\$154.54	\$762.55	\$8,502.78
3211000	MIDLAND SCHOOL DIST.	\$51,869.24	39.00	\$2,021.79	\$7,229.88	\$367.94	\$163.64	\$653.94	\$8,415.40

SCHEDULE 1 - 2009 PROPERTY TAXES AND SELECTED REVENUES BY DISTRICT

SCHEDULE 1 - 2009 PROPERTY TAXES AND SELECTED REVENUES BY DISTRICT		Assessed Value Per Pupil	TOTAL MILLS	Property Taxes Per Pupil	Unrestricted Funds Per Pupil	Restricted State Funds Per Pupil	Other Restricted State Funds (Excludes Magnet Program and Academic Facilities) Per Pupil	Restricted Federal Grant Funds (excludes Nutrition Programs) Per Pupil	Selected Revenues
DISTRICT LEA	DISTRICT								
3212000	CEDAR RIDGE SCHOOL DIST.	\$174,705.01	38.20	\$6,468.66	\$9,126.79	\$359.72	\$188.95	\$712.05	\$10,387.51
3301000	CALICO ROCK SCHOOL DIST.	\$63,903.58	42.30	\$2,514.45	\$7,919.59	\$354.04	\$165.93	\$917.66	\$9,357.22
3302000	MELBOURNE SCHOOL DIST.	\$64,044.27	39.30	\$2,341.61	\$7,387.74	\$300.13	\$199.60	\$586.81	\$8,474.28
3306000	IZARD CO. CONS. SCHOOL DIST.	\$87,662.27	36.00	\$2,928.46	\$7,786.75	\$911.70	\$111.60	\$930.31	\$9,740.36
3403000	NEWPORT SCHOOL DIST.	\$84,129.03	37.00	\$2,963.78	\$7,751.29	\$730.09	\$69.02	\$1,226.11	\$9,776.51
3405000	JACKSON CO. SCHOOL DIST.	\$62,989.56	33.00	\$1,951.08	\$7,527.07	\$520.96	\$128.44	\$720.42	\$8,896.89
3502000	DOLLARWAY SCHOOL DIST.	\$53,448.10	42.30	\$2,178.97	\$7,786.02	\$1,158.02	\$149.59	\$1,547.70	\$10,641.34
3505000	PINE BLUFF SCHOOL DIST.	\$67,841.64	41.70	\$2,725.15	\$7,601.94	\$906.65	\$193.52	\$1,135.77	\$9,837.87
3509000	WATSON CHAPEL SCHOOL DIST.	\$31,954.86	31.80	\$991.46	\$6,625.29	\$395.49	\$113.17	\$615.23	\$7,749.19
3510000	WHITE HALL SCHOOL DIST.	\$75,150.94	37.80	\$2,741.67	\$7,253.61	\$265.67	\$95.80	\$464.73	\$8,079.81
3601000	CLARKSVILLE SCHOOL DIST.	\$58,744.37	34.50	\$1,886.10	\$6,843.54	\$434.92	\$50.12	\$577.91	\$7,906.49
3604000	LAMAR SCHOOL DIST.	\$55,655.58	35.30	\$1,781.32	\$7,195.66	\$332.00	\$107.40	\$501.55	\$8,136.62
3606000	WESTSIDE SCHOOL DIST.	\$44,985.09	37.00	\$1,444.96	\$7,072.49	\$873.85	\$373.61	\$1,254.20	\$9,574.16
3701000	BRADLEY SCHOOL DIST.	\$76,246.12	32.00	\$2,343.19	\$7,924.55	\$779.57	\$183.41	\$1,044.55	\$9,932.09
3704000	LAFAYETTE COUNTY SCHOOL DIST.	\$79,864.14	32.80	\$2,670.33	\$8,131.28	\$983.50	\$301.48	\$1,212.27	\$10,628.52
3804000	HOXIE SCHOOL DIST.	\$36,101.58	34.00	\$1,141.17	\$7,117.90	\$809.89	\$137.27	\$1,068.48	\$9,133.55
3806000	SLOAN-HENDRIX SCHOOL DIST.	\$42,222.31	36.90	\$1,477.43	\$7,293.25	\$494.30	\$30.55	\$831.73	\$8,649.83
3809000	HILLCREST SCHOOL DIST.	\$72,980.64	35.90	\$2,473.15	\$8,409.81	\$351.55	\$236.00	\$657.40	\$9,654.76
3610000	LAWRENCE COUNTY SCHOOL DIST.	\$71,229.19	32.40	\$2,152.08	\$7,162.09	\$336.98	\$99.72	\$765.66	\$8,364.45
3904000	LEE COUNTY SCHOOL DIST.	\$71,686.80	26.30	\$1,753.64	\$7,173.51	\$1,645.10	\$137.79	\$2,319.94	\$11,276.35
4003000	STAR CITY SCHOOL DIST.	\$48,676.03	37.00	\$1,720.16	\$7,103.57	\$356.45	\$203.10	\$717.65	\$8,380.77
4101000	ASHDOWN SCHOOL DIST.	\$145,284.87	35.70	\$4,920.92	\$8,155.72	\$359.14	\$115.59	\$683.72	\$9,314.16
4102000	FOREMAN SCHOOL DIST.	\$68,668.76	35.50	\$2,329.75	\$7,423.08	\$353.11	\$202.67	\$1,173.30	\$9,152.15
4201000	BOONEVILLE SCHOOL DIST.	\$71,239.79	40.20	\$2,365.64	\$7,259.42	\$360.81	\$220.06	\$734.41	\$8,574.70
4202000	MAGAZINE SCHOOL DIST.	\$51,864.76	34.20	\$1,776.89	\$7,449.95	\$801.59	\$162.70	\$1,862.14	\$10,276.39
4203000	PARIS SCHOOL DIST.	\$57,430.00	38.00	\$2,084.76	\$7,555.44	\$382.39	\$255.91	\$871.59	\$9,065.33
4204000	SCRANTON SCHOOL DIST.	\$74,219.65	38.00	\$2,704.55	\$7,856.97	\$309.78	\$68.86	\$460.71	\$8,696.33
4301000	LONOKE SCHOOL DIST.	\$54,951.58	40.40	\$2,127.17	\$7,244.60	\$311.21	\$210.56	\$712.90	\$8,479.26
4302000	ENGLAND SCHOOL DIST.	\$58,000.93	41.00	\$2,325.44	\$7,561.05	\$547.92	\$153.39	\$755.83	\$9,018.19
4303000	CARLISLE SCHOOL DIST.	\$72,435.17	42.00	\$2,908.30	\$8,241.43	\$334.86	\$82.89	\$808.36	\$9,467.54
4304000	CABOT SCHOOL DIST.	\$50,666.83	36.00	\$1,818.19	\$7,019.97	\$275.75	\$98.49	\$399.04	\$7,793.26
4401000	HUNTSVILLE SCHOOL DIST.	\$55,726.53	32.10	\$1,812.65	\$7,170.15	\$355.91	\$347.42	\$674.66	\$8,548.13
4501000	FLIPPIN SCHOOL DIST.	\$98,646.08	33.90	\$3,156.76	\$7,466.49	\$438.88	\$85.32	\$1,013.61	\$9,004.29
4502000	YELLVILLE-SUMMIT SCHOOL DIST.	\$61,353.35	37.00	\$2,168.89	\$7,339.46	\$397.69	\$195.03	\$904.05	\$8,836.22
4602000	GENOA CENTRAL SCHOOL DIST.	\$31,303.55	47.00	\$1,448.86	\$7,294.47	\$356.60	\$309.81	\$507.02	\$8,467.90
4603000	FOUKE SCHOOL DIST.	\$37,830.77	49.00	\$1,820.46	\$7,384.88	\$353.62	\$290.60	\$450.22	\$8,479.33

SCHEDULE 1 - 2009 PROPERTY TAXES AND SELECTED REVENUES BY DISTRICT

SCHEDULE 1 - 2009 PROPERTY TAXES AND SELECTED REVENUES BY DISTRICT		Assessed Value Per Pupil	TOTAL MILLS	Property Taxes Per Pupil	Unrestricted Funds Per Pupil	Restricted State Funds Per Pupil	Other Restricted State Funds (Excludes Magnet Program and Academic Facilities) Per Pupil	Restricted Federal Grant Funds (excludes Nutrition Programs) Per Pupil	Selected Revenues
DISTRICT LEA	DISTRICT								
4605000	TEXARKANA SCHOOL DIST.	\$70,922.48	38.90	\$2,716.46	\$7,695.74	\$462.09	\$513.30	\$1,808.22	\$10,479.36
4701000	ARMOREL SCHOOL DIST.	\$224,011.26	36.00	\$7,254.83	\$9,000.60	\$165.00	\$77.45	\$334.27	\$9,577.32
4702000	BLYTHEVILLE SCHOOL DIST.	\$49,561.52	33.40	\$1,554.63	\$6,548.48	\$947.46	\$190.98	\$1,392.41	\$9,079.33
4706000	SO. MISS. COUNTY SCHOOL DIST.	\$48,812.14	36.00	\$1,663.39	\$7,309.13	\$765.29	\$198.94	\$959.11	\$9,232.47
4708000	GOSNELL SCHOOL DIST.	\$26,442.42	30.00	\$742.68	\$8,220.31	\$344.59	\$69.16	\$507.28	\$9,141.33
4712000	MANILA SCHOOL DIST.	\$36,821.10	31.10	\$1,069.20	\$6,881.48	\$372.92	\$118.37	\$560.58	\$7,933.35
4713000	OSCEOLA SCHOOL DIST.	\$46,037.94	35.30	\$1,642.09	\$7,292.14	\$867.53	\$269.93	\$1,323.78	\$9,753.38
4801000	BRINKLEY SCHOOL DIST.	\$72,033.75	35.90	\$2,467.34	\$7,750.49	\$902.17	\$304.78	\$1,516.89	\$10,474.32
4802000	CLARENDON SCHOOL DIST.	\$74,955.90	30.00	\$2,206.35	\$7,361.95	\$888.31	\$69.85	\$976.32	\$9,296.42
4901000	CADDO HILLS SCHOOL DIST.	\$49,229.41	33.70	\$1,592.51	\$7,382.20	\$849.47	\$282.65	\$1,075.97	\$9,590.30
4902000	MOUNT IDA SCHOOL DIST.	\$98,069.77	34.00	\$3,102.20	\$7,779.50	\$397.22	\$219.22	\$579.51	\$8,975.45
5006000	PRESCOTT SCHOOL DIST.	\$50,699.90	35.10	\$1,675.38	\$7,133.24	\$595.51	\$142.87	\$698.52	\$8,570.14
5008000	NEVADA SCHOOL DIST.	\$76,318.46	34.80	\$2,547.51	\$8,061.57	\$787.00	\$158.16	\$850.38	\$9,857.12
5102000	JASPER SCHOOL DIST.	\$59,033.37	35.90	\$1,983.24	\$8,604.69	\$341.58	\$445.54	\$868.14	\$10,259.96
5106000	DEER/MT. JUDEA SCHOOL DIST.	\$52,950.39	33.00	\$1,640.88	\$9,620.27	\$769.22	\$863.54	\$1,076.96	\$12,329.99
5201000	BEARDEN SCHOOL DIST.	\$50,373.08	34.90	\$1,629.00	\$7,296.18	\$561.32	\$234.01	\$1,018.21	\$9,109.71
5204000	CAMDEN FAIRVIEW SCHOOL DIST.	\$54,090.44	34.00	\$1,766.42	\$7,264.97	\$895.69	\$379.71	\$1,207.25	\$9,747.62
5205000	HARMONY GROVE SCHOOL DIST.	\$38,950.92	40.20	\$1,422.66	\$7,417.28	\$299.74	\$446.92	\$517.20	\$8,681.15
5206000	STEPHENS SCHOOL DIST.	\$87,550.33	34.00	\$3,117.67	\$8,914.97	\$983.05	\$493.41	\$1,662.87	\$12,054.31
5301000	EAST END SCHOOL DIST.	\$45,852.83	36.90	\$1,591.81	\$7,225.54	\$371.34	\$228.02	\$698.03	\$8,522.92
5303000	PERRYVILLE SCHOOL DIST.	\$39,974.80	35.00	\$1,462.63	\$7,043.65	\$271.45	\$156.63	\$465.04	\$7,936.79
5401000	BARTON-LEXA SCHOOL DIST.	\$36,249.91	28.60	\$1,104.03	\$7,014.82	\$373.75	\$73.03	\$633.33	\$8,094.94
5403000	HELENA/ W.HELENA SCHOOL DIST.	\$42,101.88	34.10	\$1,351.32	\$7,184.24	\$1,503.02	\$188.77	\$1,247.53	\$10,123.56
5404000	MARVELL SCHOOL DIST.	\$86,144.36	33.00	\$2,500.39	\$8,247.49	\$1,696.65	\$415.46	\$3,550.14	\$13,909.73
5501000	DELIGHT SCHOOL DIST.	\$56,105.31	40.00	\$2,327.36	\$7,820.64	\$376.57	\$219.88	\$704.31	\$9,121.40
5502000	CENTERPOINT SCHOOL DIST.	\$49,254.72	38.60	\$1,764.49	\$7,197.66	\$373.60	\$34.87	\$655.25	\$8,261.38
5503000	KIRBY SCHOOL DIST.	\$59,310.28	35.00	\$1,946.77	\$7,309.24	\$333.13	\$119.84	\$717.29	\$8,479.51
5504000	MURFREESBORO SCHOOL DIST.	\$69,314.01	36.40	\$2,394.03	\$7,341.61	\$407.42	\$149.80	\$549.91	\$8,448.74
5602000	HARRISBURG SCHOOL DIST.	\$42,077.52	35.50	\$1,473.29	\$6,617.09	\$532.34	\$366.06	\$839.67	\$8,355.16
5604000	MARKED TREE SCHOOL DIST.	\$56,922.20	33.50	\$1,867.20	\$7,012.93	\$823.68	\$89.84	\$1,383.04	\$9,309.49
5605000	TRUMANN SCHOOL DIST.	\$48,088.00	35.80	\$1,643.57	\$6,928.33	\$414.17	\$57.69	\$1,509.58	\$8,909.77
5607000	WEINER SCHOOL DIST.	\$106,746.36	39.90	\$4,299.92	\$8,880.56	\$297.95	\$158.74	\$434.43	\$9,771.68
5608000	EAST POINSETT CO. SCHOOL DIST.	\$38,251.26	31.20	\$1,201.56	\$6,907.33	\$543.76	\$120.26	\$832.26	\$8,403.60
5703000	MENA SCHOOL DIST.	\$63,741.05	29.00	\$1,732.28	\$6,767.33	\$382.10	\$145.94	\$775.97	\$8,071.34
5704000	VAN COVE SCHOOL DIST.	\$36,183.69	44.90	\$1,491.66	\$7,185.60	\$347.71	\$174.31	\$675.63	\$8,383.25
5705000	WICKES SCHOOL DIST.	\$45,379.04	39.20	\$1,700.76	\$7,704.95	\$897.01	\$866.92	\$815.77	\$10,284.64

SCHEDULE 1 - 2009 PROPERTY TAXES AND SELECTED REVENUES BY DISTRICT

SCHEDULE 1 - 2009 PROPERTY TAXES AND SELECTED REVENUES BY DISTRICT		Assessed Value Per Pupil	TOTAL MILLS	Property Taxes Per Pupil	Unrestricted Funds Per Pupil	Restricted State Funds Per Pupil	Other Restricted State Funds (Excludes Magnet Program and Academic Facilities) Per Pupil	Restricted Federal Grant Funds (excludes Nutrition Programs) Per Pupil	Selected Revenues
DISTRICT LEA	DISTRICT								
5706000	OUACHITA RIVER SCHOOL DIST.	\$53,770.22	31.30	\$1,576.76	\$7,468.01	\$779.70	\$528.80	\$601.31	\$9,377.83
5801000	ATKINS SCHOOL DIST.	\$47,503.14	34.20	\$1,622.05	\$7,191.10	\$349.79	\$210.67	\$813.55	\$8,565.12
5802000	DOVER SCHOOL DIST.	\$46,273.51	40.50	\$1,879.31	\$7,348.37	\$343.49	\$200.02	\$554.35	\$8,446.22
5803000	HECTOR SCHOOL DIST.	\$40,933.74	44.80	\$1,976.09	\$8,040.43	\$403.60	\$167.78	\$1,016.29	\$9,628.09
5804000	POTTSVILLE SCHOOL DIST.	\$39,238.09	45.20	\$1,726.55	\$7,091.73	\$243.66	\$225.99	\$507.22	\$8,068.60
5805000	RUSSELLVILLE SCHOOL DIST.	\$136,370.57	40.80	\$5,497.28	\$8,836.14	\$334.30	\$273.78	\$718.88	\$10,163.11
5901000	DES ARC SCHOOL DIST.	\$67,032.44	30.00	\$1,889.66	\$7,130.99	\$373.13	\$96.20	\$620.19	\$8,220.50
5903000	HAZEN SCHOOL DIST.	\$99,457.29	30.00	\$3,775.05	\$7,901.58	\$364.97	\$79.80	\$648.04	\$8,994.40
6001000	LITTLE ROCK SCHOOL DIST.	\$130,323.74	46.40	\$5,800.41	\$10,470.48	\$623.54	\$249.91	\$1,083.47	\$12,427.40
6002000	N. LITTLE ROCK SCHOOL DIST.	\$76,361.99	40.90	\$3,031.43	\$7,928.41	\$429.22	\$108.57	\$916.35	\$9,382.56
6003000	PULASKI CO. SPEC. SCHOOL DIST.	\$121,788.71	40.70	\$4,898.76	\$8,926.78	\$334.80	\$255.17	\$744.58	\$10,261.33
6102000	MAYNARD SCHOOL DIST.	\$40,858.23	30.70	\$999.85	\$6,471.53	\$527.70	\$118.41	\$634.29	\$7,751.93
6103000	POCAHONTAS SCHOOL DIST.	\$57,709.91	29.40	\$1,585.09	\$6,818.95	\$381.81	\$173.70	\$709.94	\$8,084.39
6201000	FORREST CITY SCHOOL DIST.	\$49,066.93	31.20	\$1,430.43	\$6,810.32	\$958.37	\$300.08	\$1,329.79	\$9,398.56
6202000	HUGHES SCHOOL DIST.	\$104,936.30	39.40	\$3,910.40	\$9,395.20	\$1,027.28	\$341.13	\$1,769.01	\$12,532.62
6205000	PALESTINE-WHEATLEY SCH. DIST.	\$44,855.15	28.90	\$1,306.76	\$6,417.54	\$825.90	\$827.61	\$996.68	\$9,067.73
6301000	BAUXITE SCHOOL DIST.	\$39,740.25	35.90	\$1,388.22	\$6,877.42	\$212.23	\$118.93	\$326.14	\$7,534.71
6302000	BENTON SCHOOL DIST.	\$72,936.17	35.40	\$2,498.96	\$7,223.02	\$255.78	\$176.35	\$410.50	\$8,065.66
6303000	BRYANT SCHOOL DIST.	\$69,657.90	33.30	\$2,278.16	\$6,832.16	\$216.15	\$247.96	\$375.76	\$7,672.03
6304000	HARMONY GROVE SCHOOL DIST.	\$44,348.30	39.40	\$1,703.52	\$7,238.36	\$223.48	\$38.40	\$407.32	\$7,907.56
6401000	WALDRON SCHOOL DIST.	\$41,246.94	35.60	\$1,305.94	\$7,235.85	\$465.24	\$227.38	\$1,021.85	\$8,950.34
6502000	SEARCY COUNTY SCHOOL DIST.	\$61,768.21	32.80	\$1,849.17	\$7,479.87	\$917.77	\$324.39	\$944.51	\$9,666.54
6505000	OZARK MOUNTAIN SCHOOL DIST.	\$60,641.16	33.60	\$1,944.33	\$7,993.70	\$856.86	\$700.32	\$1,083.62	\$10,634.50
6601000	FORT SMITH SCHOOL DIST.	\$89,122.25	36.50	\$3,208.48	\$7,294.30	\$447.84	\$139.56	\$1,058.51	\$8,940.21
6602000	GREENWOOD SCHOOL DIST.	\$78,322.63	38.70	\$2,965.07	\$7,383.67	\$198.74	\$175.09	\$531.14	\$8,288.64
6603000	HACKETT SCHOOL DIST.	\$39,083.85	38.00	\$1,457.47	\$6,840.96	\$250.83	\$81.56	\$443.64	\$7,617.00
6604000	HARTFORD SCHOOL DIST.	\$65,616.99	39.30	\$2,158.01	\$7,536.77	\$357.25	\$95.79	\$860.85	\$8,850.66
6605000	LAVACA SCHOOL DIST.	\$55,492.06	41.90	\$2,129.33	\$7,588.11	\$266.57	\$264.43	\$553.48	\$8,672.59
6606000	MANSFIELD SCHOOL DIST.	\$54,986.26	40.00	\$1,929.40	\$7,234.29	\$269.13	\$311.08	\$770.19	\$8,584.69
6701000	DEQUEEN SCHOOL DIST.	\$41,736.68	27.30	\$1,074.76	\$6,532.35	\$749.44	\$76.95	\$852.16	\$8,210.91
6703000	HORATIO SCHOOL DIST.	\$30,500.50	32.00	\$1,010.41	\$6,595.51	\$346.72	\$137.12	\$554.60	\$7,633.96
6802000	CAVE CITY SCHOOL DIST.	\$39,997.95	39.00	\$1,518.24	\$6,950.44	\$350.24	\$236.13	\$604.35	\$8,141.15
6804000	HIGHLAND SCHOOL DIST.	\$80,608.21	30.00	\$2,277.44	\$6,845.90	\$371.10	\$35.35	\$903.04	\$8,155.39
6806000	TWIN RIVERS SCHOOL DIST.	\$89,627.51	31.10	\$2,838.94	\$9,410.21	\$830.63	\$966.69	\$809.50	\$12,017.03
6901000	MOUNTAIN VIEW SCHOOL DIST.	\$67,819.17	28.90	\$1,874.46	\$6,937.31	\$327.29	\$287.96	\$859.21	\$8,411.77
7001000	EL DORADO SCHOOL DIST.	\$78,278.05	33.50	\$2,664.61	\$7,306.21	\$371.58	\$104.54	\$707.69	\$8,490.03

SCHEDULE 1 - 2009 PROPERTY TAXES AND SELECTED REVENUES BY DISTRICT

SCHEDULE 1 - 2009 PROPERTY TAXES AND SELECTED REVENUES BY DISTRICT		Assessed Value Per Pupil	TOTAL MILLS	Property Taxes Per Pupil	Unrestricted Funds Per Pupil	Restricted State Funds Per Pupil	Other Restricted State Funds (Excludes Magnet Program and Academic Facilities) Per Pupil	Restricted Federal Grant Funds (excludes Nutrition Programs) Per Pupil	Selected Revenues
DISTRICT LEA	DISTRICT								
7003000	JUNCTION CITY SCHOOL DIST.	\$95,479.36	35.00	\$3,225.32	\$8,303.94	\$284.66	\$220.58	\$577.86	\$9,387.05
7006000	NORPHLET SCHOOL DIST.	\$70,932.89	37.00	\$2,833.20	\$8,606.84	\$309.91	\$136.54	\$703.30	\$9,756.59
7007000	PARKERS CHAPEL SCHOOL DIST.	\$70,538.03	32.80	\$2,391.82	\$7,464.96	\$165.37	\$379.43	\$420.73	\$8,430.48
7008000	SMACKOVER SCHOOL DIST.	\$77,231.33	41.00	\$3,224.97	\$8,105.76	\$283.80	\$237.81	\$504.94	\$9,132.31
7009000	STRONG-HUTTIG SCHOOL DIST.	\$75,931.31	39.00	\$2,889.31	\$8,181.29	\$940.85	\$301.47	\$798.14	\$10,221.75
7102000	CLINTON SCHOOL DIST.	\$84,029.70	32.80	\$2,687.60	\$7,490.02	\$390.45	\$161.87	\$949.21	\$8,991.54
7104000	SHIRLEY SCHOOL DIST.	\$119,561.04	35.80	\$3,999.86	\$8,015.10	\$852.21	\$105.94	\$827.18	\$9,800.43
7105000	SOUTH SIDE SCHOOL DIST.	\$71,700.50	40.70	\$3,169.02	\$8,456.07	\$327.05	\$121.37	\$919.00	\$9,823.48
7201000	ELKINS SCHOOL DIST.	\$43,256.42	39.60	\$1,676.04	\$6,979.99	\$249.34	\$61.26	\$368.00	\$7,658.60
7202000	FARMINGTON SCHOOL DIST.	\$66,936.41	42.60	\$2,791.44	\$7,668.57	\$278.47	\$49.26	\$296.83	\$8,293.13
7203000	FAYETTEVILLE SCHOOL DIST.	\$140,397.41	42.90	\$5,761.74	\$8,576.14	\$288.10	\$127.67	\$524.52	\$9,516.43
7204000	GREENLAND SCHOOL DIST.	\$97,389.18	36.90	\$3,381.16	\$8,728.80	\$426.78	\$66.22	\$700.25	\$9,922.05
7205000	LINCOLN SCHOOL DIST.	\$52,222.72	39.80	\$2,041.44	\$7,607.79	\$444.00	\$739.11	\$761.73	\$9,552.63
7206000	PRAIRIE GROVE SCHOOL DIST.	\$63,874.43	36.90	\$2,304.32	\$7,003.38	\$262.89	\$116.55	\$364.66	\$7,747.48
7207000	SPRINGDALE SCHOOL DIST.	\$81,009.55	38.60	\$3,062.97	\$7,434.50	\$459.68	\$108.50	\$472.44	\$8,475.11
7208000	WEST FORK SCHOOL DIST.	\$40,366.43	38.60	\$1,537.83	\$6,880.32	\$322.99	\$64.19	\$444.10	\$7,711.61
7301000	BALD KNOB SCHOOL DIST.	\$41,618.34	38.50	\$1,525.79	\$7,623.26	\$421.02	\$208.45	\$1,935.29	\$10,188.02
7302000	BEEBE SCHOOL DIST.	\$44,435.73	37.00	\$1,615.21	\$7,244.40	\$292.09	\$141.92	\$524.75	\$8,203.16
7303000	BRADFORD SCHOOL DIST.	\$39,627.06	32.00	\$1,149.83	\$7,038.67	\$476.49	\$88.59	\$745.51	\$8,349.26
7304000	WHITE CO. CENTRAL SCHOOL DIST.	\$35,889.84	39.30	\$1,522.10	\$7,021.47	\$359.41	\$68.05	\$536.92	\$7,985.84
7307000	RIVERVIEW SCHOOL DIST.	\$52,689.49	36.00	\$1,969.72	\$7,525.54	\$564.03	\$124.26	\$909.36	\$9,123.20
7309000	PANGBURN SCHOOL DIST.	\$37,594.94	42.50	\$1,706.44	\$7,710.01	\$358.23	\$129.42	\$573.60	\$8,771.25
7310000	ROSE BUD SCHOOL DIST.	\$40,088.18	40.30	\$1,630.35	\$7,458.60	\$377.93	\$128.69	\$646.72	\$8,611.93
7311000	SEARCY SCHOOL DIST.	\$94,189.97	36.20	\$3,362.04	\$7,481.52	\$258.21	\$69.96	\$508.23	\$8,317.92
7401000	AUGUSTA SCHOOL DIST.	\$85,978.56	32.50	\$2,806.08	\$8,448.37	\$1,004.00	\$392.50	\$3,141.29	\$12,986.15
7403000	MCCRORY SCHOOL DIST.	\$56,121.55	35.70	\$1,870.51	\$7,052.60	\$364.66	\$115.79	\$635.52	\$8,168.56
7503000	DANVILLE SCHOOL DIST.	\$40,260.42	31.00	\$1,162.61	\$6,612.68	\$903.29	\$309.27	\$651.58	\$8,476.82
7504000	DARDANELLE SCHOOL DIST.	\$43,273.49	33.70	\$1,414.88	\$6,583.07	\$412.13	\$171.15	\$589.31	\$7,755.66
7509000	WESTERN YELL CO. SCHOOL DIST.	\$76,351.50	38.80	\$2,955.79	\$7,767.68	\$733.92	\$108.08	\$885.22	\$9,494.89
7510000	TWO RIVERS SCHOOL DIST.	\$58,997.83	35.60	\$2,068.13	\$8,210.50	\$960.49	\$407.29	\$1,207.19	\$10,785.47

SCHEDULE 2 – 2009 STATISTICAL DATA

DISTRICT LEA	SCHEDULE 2 - 2009 STATISTICAL DATA DISTRICT	2009 3 QTR AVG. ADM with Magnet ADM and M to M	Five Year 3 QTR.			Non- White %	2009 Weighted ACTAAP	Increase (Decrease) of 2009 ACTAAP versus 2007 ACTAAP
			AVG. ADM CHANGE	NSLA %	White %			
0101000	DEWITT SCHOOL DIST.	1,431.20	-14.84%	58.62%	80.97%	19.03%	64.39%	-0.97%
0104000	STUTTGART SCHOOL DIST.	1,804.51	-2.25%	61.23%	50.00%	50.00%	63.26%	17.54%
0201000	CROSSETT SCHOOL DIST.	1,921.02	-20.37%	51.99%	58.48%	41.52%	60.03%	18.05%
0203000	HAMBURG SCHOOL DIST.	1,937.29	3.38%	100.00%	62.80%	37.20%	69.57%	16.49%
0302000	COTTER SCHOOL DIST.	645.55	0.51%	65.90%	96.18%	3.82%	81.18%	18.13%
0303000	MOUNTAIN HOME SCHOOL DIST.	3,965.25	3.01%	49.95%	97.13%	2.87%	81.34%	15.24%
0304000	NORFORK SCHOOL DIST.	423.44	-5.50%	75.66%	98.33%	1.67%	89.28%	16.52%
0401000	BENTONVILLE SCHOOL DIST.	12,534.71	50.54%	26.02%	83.03%	16.97%	87.83%	10.28%
0402000	DECATUR SCHOOL DIST.	510.96	4.81%	71.86%	63.23%	36.77%	67.02%	18.48%
0403000	GENTRY SCHOOL DIST.	1,421.75	4.06%	58.76%	73.06%	26.94%	78.86%	14.77%
0404000	GRAVETTE SCHOOL DIST.	1,739.87	12.06%	44.80%	89.03%	10.97%	79.52%	14.80%
0405000	ROGERS SCHOOL DIST.	13,559.35	10.45%	56.71%	56.37%	43.63%	76.67%	11.50%
0406000	SILOAM SPRINGS SCHOOL DIST.	3,743.13	18.94%	48.79%	66.85%	33.15%	74.53%	7.02%
0407000	PEA RIDGE SCHOOL DIST.	1,552.74	25.62%	41.50%	90.76%	9.24%	82.58%	14.88%
0501000	ALPENA SCHOOL DIST.	579.40	7.50%	56.57%	97.75%	2.25%	79.18%	11.99%
0502000	BERGMAN SCHOOL DIST.	1,058.35	19.65%	45.22%	96.44%	3.56%	84.16%	12.94%
0503000	HARRISON SCHOOL DIST.	2,811.30	1.40%	47.90%	96.55%	3.45%	77.89%	8.65%
0504000	OMAHA SCHOOL DIST.	424.83	4.98%	70.49%	97.19%	2.81%	70.72%	16.37%
0505000	VALLEY SPRINGS SCHOOL DIST.	955.70	1.71%	42.56%	98.85%	1.15%	85.49%	11.88%
0506000	LEAD HILL SCHOOL DIST.	360.20	-13.30%	70.14%	99.45%	0.55%	60.14%	5.03%
0601000	HERMITAGE SCHOOL DIST.	494.30	-14.90%	75.94%	56.26%	43.74%	50.24%	0.21%
0602000	WARREN SCHOOL DIST.	1,490.58	-4.94%	69.62%	46.30%	53.70%	60.40%	15.55%
0701000	HAMPTON SCHOOL DIST.	629.07	-12.07%	57.41%	67.98%	32.02%	68.18%	24.40%
0801000	BERRYVILLE SCHOOL DIST.	1,843.60	9.10%	53.26%	78.20%	21.80%	74.88%	13.57%
0802000	EUREKA SPRINGS SCHOOL DIST.	653.79	-1.58%	52.79%	89.85%	10.15%	69.18%	18.90%
0803000	GREEN FOREST SCHOOL DIST.	1,207.44	-1.61%	73.21%	63.02%	36.98%	68.70%	17.58%
0901000	DERMOTT SCHOOL DIST.	473.44	-22.50%	100.00%	8.25%	91.75%	44.81%	22.19%
0903000	LAKESIDE SCHOOL DIST.	1,250.66	-22.38%	95.00%	15.24%	84.76%	52.74%	22.36%
1002000	ARKADELPHIA SCHOOL DIST.	1,992.33	-10.63%	50.47%	60.50%	39.50%	73.89%	8.65%
1003000	GURDON SCHOOL DIST.	777.87	-8.22%	70.51%	56.15%	43.85%	69.44%	23.76%
1101000	CORNING SCHOOL DIST.	1,071.68	-13.81%	65.59%	98.33%	1.67%	71.19%	14.20%
1104000	PIGGOTT SCHOOL DIST.	995.61	-1.38%	53.82%	97.72%	2.28%	73.16%	10.28%
1106000	RECTOR SCHOOL DIST.	595.09	-9.01%	56.21%	99.50%	0.50%	65.88%	-0.66%
1201000	CONCORD SCHOOL DIST.	482.95	-17.43%	56.16%	99.37%	0.63%	76.42%	8.82%

DISTRICT LEA	SCHEDULE 2 - 2009 STATISTICAL DATA DISTRICT	2009 3 QTR AVG. ADM with Magnet ADM and M to M	Five Year 3 QTR. AVG. ADM CHANGE	NSLA %	White %	Non- White %	2009 Weighted ACTAAP	Increase (Decrease) of 2009 ACTAAP versus 2007 ACTAAP
1202000	HEBER SPRINGS SCHOOL DIST.	1,721.62	3.17%	48.82%	95.11%	4.89%	79.31%	9.97%
1203000	QUITMAN SCHOOL DIST.	616.92	8.82%	51.31%	96.73%	3.27%	66.66%	9.57%
1204000	WEST SIDE SCHOOL DIST.	497.16	-8.18%	53.50%	99.18%	0.82%	69.80%	6.76%
1304000	WOODLAWN SCHOOL DIST.	562.57	-2.04%	32.92%	97.54%	2.46%	67.79%	-3.70%
1305000	CLEVELAND COUNTY SCHOOL DIST.	848.51	-6.07%	53.75%	71.05%	28.95%	69.47%	13.34%
1402000	MAGNOLIA SCHOOL DIST.	2,915.12	-11.96%	63.78%	40.33%	59.67%	53.19%	2.82%
1408000	EMERSON-TAYLOR SCHOOL DIST.	644.56	-0.96%	43.29%	77.52%	22.48%	74.34%	14.27%
1503000	NEMO VISTA SCHOOL DIST.	502.97	17.21%	62.20%	94.00%	6.00%	70.76%	-1.69%
1505000	WONDERVIEW SCHOOL DIST.	405.83	-10.61%	48.77%	93.10%	6.90%	63.38%	-1.63%
1507000	SO. CONWAY CO. SCHOOL DIST.	2,302.34	-3.29%	60.13%	68.81%	31.19%	74.24%	10.77%
1601000	BAY SCHOOL DIST.	545.83	-3.74%	48.81%	96.34%	3.66%	69.91%	14.26%
1602000	WESTSIDE CONS. SCHOOL DIST.	1,613.98	-0.47%	51.99%	96.82%	3.18%	77.48%	9.57%
1603000	BROOKLAND SCHOOL DIST.	1,491.16	24.58%	34.95%	95.70%	4.30%	73.82%	14.37%
1605000	BUFFALO IS. CENTRAL SCH. DIST.	838.03	3.18%	62.14%	82.62%	17.38%	72.76%	8.33%
1608000	JONESBORO SCHOOL DIST.	5,125.13	6.84%	68.07%	49.95%	50.05%	66.38%	6.22%
1611000	NETTLETON SCHOOL DIST.	3,119.02	13.70%	54.46%	63.25%	36.75%	71.60%	9.00%
1612000	VALLEY VIEW SCHOOL DIST.	2,160.71	40.63%	20.80%	92.79%	7.21%	87.34%	7.40%
1613000	RIVERSIDE SCHOOL DIST.	789.54	-0.16%	59.47%	96.82%	3.18%	59.45%	3.07%
1701000	ALMA SCHOOL DIST.	3,367.21	11.45%	46.84%	95.28%	4.72%	71.80%	17.33%
1702000	CEDARVILLE SCHOOL DIST.	936.72	3.79%	70.79%	95.20%	4.80%	64.67%	11.49%
1703000	MOUNTAINBURG SCHOOL DIST.	706.69	-6.74%	62.69%	96.49%	3.51%	72.64%	9.00%
1704000	MULBERRY SCHOOL DIST.	415.04	-32.16%	69.76%	96.90%	3.10%	55.10%	-4.68%
1705000	VAN BUREN SCHOOL DIST.	5,839.59	5.19%	50.77%	77.40%	22.60%	70.94%	10.42%
1802000	EARLE SCHOOL DIST.	778.41	-0.33%	95.26%	4.35%	95.65%	47.93%	20.99%
1803000	WEST MEMPHIS SCHOOL DIST.	5,905.13	-2.78%	99.98%	18.37%	81.63%	55.92%	9.58%
1804000	MARION SCHOOL DIST.	3,902.79	7.68%	50.30%	57.87%	42.13%	76.50%	13.36%
1805000	TURRELL SCHOOL DIST.	338.93	-13.71%	100.00%	10.54%	89.46%	34.97%	8.21%
1901000	CROSS COUNTY SCHOOL DIST.	604.94	-19.96%	100.00%	89.29%	10.71%	65.90%	31.68%
1905000	WYNNE SCHOOL DIST.	2,908.00	-7.33%	55.84%	66.91%	33.09%	74.03%	16.68%
2002000	FORDYCE SCHOOL DIST.	1,008.87	-15.74%	59.53%	46.53%	53.47%	56.74%	10.35%
2104000	DUMAS SCHOOL DIST.	1,580.96	-10.93%	79.85%	26.36%	73.64%	54.01%	8.98%
2105000	MCGEHEE SCHOOL DIST.	1,164.43	-18.80%	74.40%	50.60%	49.40%	55.42%	12.45%
2202000	DREW CENTRAL SCHOOL DIST.	970.20	-5.28%	72.48%	68.10%	31.90%	66.33%	16.56%
2203000	MONTICELLO SCHOOL DIST.	2,109.23	-2.99%	52.75%	62.47%	37.53%	75.66%	10.19%
2301000	CONWAY SCHOOL DIST.	9,083.16	10.69%	39.17%	66.68%	33.32%	79.96%	7.71%
2303000	GREENBRIER SCHOOL DIST.	2,957.61	22.39%	36.45%	95.99%	4.01%	79.96%	11.06%

DISTRICT LEA	SCHEDULE 2 - 2009 STATISTICAL DATA DISTRICT	2009 3 QTR AVG. ADM with Magnet ADM and M to M	Five Year 3 QTR. AVG. ADM CHANGE	NSLA %	White %	Non- White %	2009 Weighted ACTAAP	Increase (Decrease) of 2009 ACTAAP versus 2007 ACTAAP
2304000	GUY-PERKINS SCHOOL DIST.	452.80	11.06%	56.58%	87.06%	12.94%	60.89%	1.06%
2305000	MAYFLOWER SCHOOL DIST.	1,028.60	21.87%	37.30%	89.55%	10.45%	66.60%	18.41%
2306000	MT. VERNON/ENOLA SCHOOL DIST.	501.19	11.38%	62.30%	96.88%	3.13%	76.54%	8.99%
2307000	VILONIA SCHOOL DIST.	2,963.18	12.21%	36.28%	96.00%	4.00%	82.11%	7.12%
2402000	CHARLESTON SCHOOL DIST.	896.01	2.04%	35.91%	94.59%	5.41%	75.22%	2.70%
2403000	COUNTY LINE SCHOOL DIST.	531.60	-7.30%	50.74%	93.54%	6.46%	69.22%	-0.14%
2404000	OZARK SCHOOL DIST.	1,846.86	1.31%	46.69%	93.54%	6.46%	73.09%	13.83%
2501000	MAMMOTH SPRING SCHOOL DIST.	415.45	0.31%	61.71%	99.27%	0.73%	76.04%	23.01%
2502000	SALEM SCHOOL DIST.	731.48	2.33%	59.81%	96.62%	3.38%	80.32%	7.46%
2503000	VIOLA SCHOOL DIST.	395.55	-8.78%	53.16%	96.46%	3.54%	79.39%	8.28%
2601000	CUTTER-MORNING STAR SCH. DIST.	675.35	7.46%	57.69%	87.70%	12.30%	68.59%	18.59%
2602000	FOUNTAIN LAKE SCHOOL DIST.	1,200.82	4.51%	43.23%	91.44%	8.56%	70.56%	17.05%
2603000	HOT SPRINGS SCHOOL DIST.	3,645.37	2.77%	75.61%	44.93%	55.07%	63.86%	2.76%
2604000	JESSIEVILLE SCHOOL DIST.	886.58	10.13%	54.82%	92.38%	7.62%	80.84%	10.74%
2605000	LAKE HAMILTON SCHOOL DIST.	3,932.96	7.13%	49.27%	89.06%	10.94%	79.18%	8.01%
2606000	LAKESIDE SCHOOL DIST.	2,928.51	15.25%	33.72%	82.90%	17.10%	87.32%	16.00%
2607000	MOUNTAIN PINE SCHOOL DIST.	594.14	-13.84%	76.54%	83.06%	16.94%	65.86%	9.37%
2703000	POYEN SCHOOL DIST.	564.06	12.89%	56.39%	97.90%	2.10%	70.76%	6.89%
2705000	SHERIDAN SCHOOL DIST.	4,134.89	-0.11%	40.65%	93.43%	6.57%	76.62%	2.87%
2803000	MARMADUKE SCHOOL DIST.	726.85	-5.40%	57.32%	98.06%	1.94%	68.99%	15.42%
2807000	GREENE CO. TECH SCHOOL DIST.	3,301.45	2.00%	45.40%	96.26%	3.74%	76.14%	8.82%
2808000	PARAGOULD SCHOOL DIST.	2,834.75	6.63%	60.54%	95.18%	4.82%	72.76%	6.24%
2901000	BLEVINS SCHOOL DIST.	640.99	-14.56%	73.56%	71.07%	28.93%	50.58%	12.47%
2903000	HOPE SCHOOL DIST.	2,537.48	-7.60%	75.59%	27.10%	72.90%	54.19%	10.22%
2906000	SPRING HILL SCHOOL DIST.	481.88	-6.07%	50.31%	96.67%	3.33%	81.21%	12.39%
3001000	BISMARCK SCHOOL DIST.	934.48	-9.71%	57.32%	90.09%	9.91%	75.88%	9.60%
3002000	GLEN ROSE SCHOOL DIST.	988.72	-3.31%	49.16%	97.92%	2.08%	72.69%	17.96%
3003000	MAGNET COVE SCHOOL DIST.	736.90	-6.65%	46.71%	97.05%	2.95%	76.52%	3.11%
3004000	MALVERN SCHOOL DIST.	2,067.35	-8.69%	67.04%	61.73%	38.27%	67.22%	7.00%
3005000	OUACHITA SCHOOL DIST.	483.93	26.95%	46.79%	95.24%	4.76%	77.78%	19.75%
3102000	DIERKS SCHOOL DIST.	513.33	-5.65%	53.95%	93.64%	6.36%	77.05%	17.04%
3104000	MINERAL SPRINGS SCHOOL DIST.	513.13	-19.33%	78.57%	25.48%	74.52%	50.02%	9.76%
3105000	NASHVILLE SCHOOL DIST.	1,887.18	4.31%	61.76%	59.64%	40.36%	65.90%	10.39%
3201000	BATESVILLE SCHOOL DIST.	2,650.98	4.40%	51.64%	79.84%	20.16%	79.05%	9.96%
3203000	CUSHMAN SCHOOL DIST.	236.28	-37.00%	64.58%	97.50%	2.50%	75.98%	23.06%
3209000	SOUTHSIDE SCHOOL DIST.	1,431.65	5.14%	54.83%	96.01%	3.99%	76.52%	8.79%

DISTRICT LEA	SCHEDULE 2 - 2009 STATISTICAL DATA DISTRICT	2009 3 QTR AVG. ADM with Magnet ADM and M to M	Five Year 3 QTR. AVG. ADM CHANGE	NSLA %	White %	Non- White %	2009 Weighted ACTAAP	Increase (Decrease) of 2009 ACTAAP versus 2007 ACTAAP
3211000	MIDLAND SCHOOL DIST.	516.36	-11.94%	62.64%	97.70%	2.30%	65.74%	-0.39%
3212000	CEDAR RIDGE SCHOOL DIST.	802.22	0.02%	53.50%	98.50%	1.50%	63.71%	7.90%
3301000	CALICO ROCK SCHOOL DIST.	426.55	-16.01%	55.35%	99.53%	0.47%	76.32%	26.72%
3302000	MELBOURNE SCHOOL DIST.	874.07	0.69%	49.15%	96.05%	3.95%	78.81%	14.03%
3306000	IZARD CO. CONS. SCHOOL DIST.	507.80	-0.71%	72.73%	97.04%	2.96%	66.35%	0.73%
3403000	NEWPORT SCHOOL DIST.	1,471.17	-8.43%	72.70%	58.40%	41.60%	58.25%	3.67%
3405000	JACKSON CO. SCHOOL DIST.	782.79	-12.44%	65.77%	94.38%	5.62%	79.70%	20.19%
3502000	DOLLARWAY SCHOOL DIST.	1,736.23	-13.02%	92.96%	6.10%	93.90%	40.65%	15.98%
3505000	PINE BLUFF SCHOOL DIST.	4,909.58	-17.73%	76.21%	2.18%	97.82%	41.19%	15.12%
3509000	WATSON CHAPEL SCHOOL DIST.	3,092.66	-1.58%	62.38%	33.01%	66.99%	53.47%	-0.14%
3510000	WHITE HALL SCHOOL DIST.	3,083.27	0.16%	34.26%	82.69%	17.31%	71.73%	14.01%
3601000	CLARKSVILLE SCHOOL DIST.	2,552.22	13.57%	60.48%	70.19%	29.81%	78.36%	13.38%
3604000	LAMAR SCHOOL DIST.	1,113.37	0.22%	58.64%	94.62%	5.38%	74.04%	10.39%
3606000	WESTSIDE SCHOOL DIST.	605.15	3.35%	100.00%	93.49%	6.51%	59.68%	6.72%
3701000	BRADLEY SCHOOL DIST.	374.26	2.94%	75.14%	56.83%	43.17%	63.68%	-0.06%
3704000	LAFAYETTE COUNTY SCHOOL DIST.	774.05	-23.29%	79.38%	34.24%	65.76%	49.12%	13.81%
3804000	HOXIE SCHOOL DIST.	994.64	7.24%	70.91%	97.88%	2.12%	64.33%	9.69%
3806000	SLOAN-HENDRIX SCHOOL DIST.	522.87	-6.98%	65.78%	97.72%	2.28%	67.07%	12.43%
3809000	HILLCREST SCHOOL DIST.	438.68	-20.43%	66.82%	99.55%	0.45%	68.20%	1.35%
3610000	LAWRENCE COUNTY SCHOOL DIST.	1,074.45	-6.22%	59.04%	99.35%	0.65%	65.17%	6.09%
3904000	LEE COUNTY SCHOOL DIST.	1,134.29	-27.02%	100.00%	6.95%	93.05%	39.58%	2.83%
4003000	STAR CITY SCHOOL DIST.	1,697.95	-4.71%	58.61%	71.43%	28.57%	72.34%	13.89%
4101000	ASHDOWN SCHOOL DIST.	1,538.50	-6.53%	50.96%	65.66%	34.34%	64.67%	21.57%
4102000	FOREMAN SCHOOL DIST.	503.78	-7.63%	59.41%	71.37%	28.63%	64.83%	7.61%
4201000	BOONEVILLE SCHOOL DIST.	1,441.46	-1.64%	55.57%	94.22%	5.78%	71.98%	8.43%
4202000	MAGAZINE SCHOOL DIST.	551.53	6.05%	71.17%	91.61%	8.39%	77.74%	12.53%
4203000	PARIS SCHOOL DIST.	1,126.70	-1.14%	53.62%	87.08%	12.92%	77.79%	13.27%
4204000	SCRANTON SCHOOL DIST.	397.36	8.69%	47.75%	94.75%	5.25%	75.31%	-0.59%
4301000	LONOKE SCHOOL DIST.	1,864.06	5.55%	53.05%	73.15%	26.85%	71.58%	12.22%
4302000	ENGLAND SCHOOL DIST.	792.41	-13.17%	69.09%	57.02%	42.98%	64.04%	14.06%
4303000	CARLISLE SCHOOL DIST.	715.49	1.21%	51.75%	86.54%	13.46%	73.34%	15.98%
4304000	CABOT SCHOOL DIST.	9,539.60	23.09%	31.56%	93.66%	6.34%	79.21%	6.66%
4401000	HUNTSVILLE SCHOOL DIST.	2,392.01	-2.39%	54.62%	91.19%	8.81%	75.70%	14.54%
4501000	FLIPPIN SCHOOL DIST.	872.74	-5.19%	60.64%	98.18%	1.82%	70.92%	13.66%
4502000	YELLVILLE-SUMMIT SCHOOL DIST.	859.68	-14.08%	60.44%	97.46%	2.54%	72.05%	5.64%
4602000	GENOA CENTRAL SCHOOL DIST.	942.49	-0.87%	47.08%	98.62%	1.38%	74.39%	8.64%

DISTRICT LEA	SCHEDULE 2 - 2009 STATISTICAL DATA DISTRICT	2009 3 QTR AVG. ADM with Magnet ADM and M to M	Five Year 3 QTR. AVG. ADM CHANGE	NSLA %	White %	Non- White %	2009 Weighted ACTAAP	Increase (Decrease) of 2009 ACTAAP versus 2007 ACTAAP
4603000	FOUKE SCHOOL DIST.	1,029.45	-1.98%	56.21%	97.77%	2.23%	67.66%	10.11%
4605000	TEXARKANA SCHOOL DIST.	4,331.33	-1.82%	66.69%	46.67%	53.33%	55.51%	9.97%
4701000	ARMOREL SCHOOL DIST.	450.75	10.92%	28.79%	83.52%	16.48%	68.65%	4.87%
4702000	BLYTHEVILLE SCHOOL DIST.	3,068.93	-5.83%	100.00%	20.48%	79.52%	50.75%	17.92%
4706000	SO. MISS. COUNTY SCHOOL DIST.	1,273.22	-8.85%	71.85%	64.84%	35.16%	56.00%	3.02%
4708000	GOSNELL SCHOOL DIST.	1,424.31	5.95%	62.04%	71.11%	28.89%	68.45%	19.30%
4712000	MANILA SCHOOL DIST.	1,024.66	1.95%	62.49%	94.56%	5.44%	66.45%	3.23%
4713000	OSCEOLA SCHOOL DIST.	1,558.62	-4.38%	100.00%	22.52%	77.48%	46.54%	13.66%
4801000	BRINKLEY SCHOOL DIST.	734.73	-24.34%	100.00%	39.84%	60.16%	56.29%	10.67%
4802000	CLARENDON SCHOOL DIST.	600.81	-18.81%	77.23%	36.63%	63.37%	43.92%	7.34%
4901000	CADDO HILLS SCHOOL DIST.	528.05	-14.97%	74.53%	83.27%	16.73%	80.09%	8.65%
4902000	MOUNT IDA SCHOOL DIST.	564.00	-2.20%	61.05%	96.32%	3.68%	70.74%	13.81%
5006000	PRESCOTT SCHOOL DIST.	1,022.68	-10.16%	71.15%	52.37%	47.63%	72.24%	15.29%
5008000	NEVADA SCHOOL DIST.	416.65	-1.75%	77.49%	58.77%	41.23%	62.63%	22.30%
5102000	JASPER SCHOOL DIST.	881.28	-1.86%	63.52%	97.15%	2.85%	71.59%	19.38%
5106000	DEER/MT. JUDEA SCHOOL DIST.	378.80	-21.18%	73.13%	84.75%	15.25%	59.72%	-1.09%
5201000	BEARDEN SCHOOL DIST.	608.12	-8.74%	72.85%	55.79%	44.21%	65.54%	23.97%
5204000	CAMDEN FAIRVIEW SCHOOL DIST.	2,478.87	-17.38%	72.96%	34.26%	65.74%	61.06%	8.30%
5205000	HARMONY GROVE SCHOOL DIST.	1,037.43	-0.76%	51.39%	73.42%	26.58%	66.81%	4.99%
5206000	STEPHENS SCHOOL DIST.	374.50	-36.21%	85.22%	11.29%	88.71%	33.52%	-2.63%
5301000	EAST END SCHOOL DIST.	650.36	-12.00%	54.48%	92.56%	7.44%	69.48%	9.10%
5303000	PERRYVILLE SCHOOL DIST.	1,048.07	11.12%	44.59%	97.13%	2.87%	70.19%	2.92%
5401000	BARTON-LEXA SCHOOL DIST.	768.98	-12.75%	66.02%	64.77%	35.23%	52.60%	0.16%
5403000	HELENA/ W.HELENA SCHOOL DIST.	2,579.40	-19.54%	100.00%	4.25%	95.75%	45.95%	21.03%
5404000	MARVELL SCHOOL DIST.	622.11	-35.94%	96.19%	7.62%	92.38%	41.60%	13.17%
5501000	DELIGHT SCHOOL DIST.	329.85	-8.31%	67.77%	67.77%	32.23%	67.07%	23.08%
5502000	CENTERPOINT SCHOOL DIST.	1,043.15	8.40%	61.14%	81.58%	18.42%	63.26%	9.41%
5503000	KIRBY SCHOOL DIST.	442.51	3.91%	61.35%	93.71%	6.29%	67.15%	N/A
5504000	MURFREESBORO SCHOOL DIST.	505.31	-6.49%	48.63%	91.21%	8.79%	62.13%	12.12%
5602000	HARRISBURG SCHOOL DIST.	1,144.76	7.21%	75.20%	94.72%	5.28%	72.80%	14.96%
5604000	MARKED TREE SCHOOL DIST.	611.51	-9.15%	72.61%	68.40%	31.60%	70.38%	7.70%
5605000	TRUMANN SCHOOL DIST.	1,592.91	-7.11%	68.24%	86.58%	13.42%	67.41%	9.21%
5607000	WEINER SCHOOL DIST.	342.11	-5.70%	55.65%	91.96%	8.04%	72.36%	13.66%
5608000	EAST POINSETT CO. SCHOOL DIST.	761.14	-4.02%	71.97%	85.92%	14.08%	61.07%	11.71%
5703000	MENA SCHOOL DIST. (1)	1,956.35	-11.72%	55.69%	95.42%	4.58%	N/A	N/A
5704000	VAN COVE SCHOOL DIST.	423.91	9.11%	71.29%	93.06%	6.94%	59.64%	15.87%

DISTRICT LEA	SCHEDULE 2 - 2009 STATISTICAL DATA DISTRICT	2009 3 QTR AVG. ADM with Magnet ADM and M to M	Five Year 3 QTR. AVG. ADM CHANGE	NSLA %	White %	Non- White %	2009 Weighted ACTAAP	Increase (Decrease) of 2009 ACTAAP versus 2007 ACTAAP
5705000	WICKES SCHOOL DIST.	698.32	9.32%	100.00%	66.14%	33.86%	74.26%	8.98%
5706000	OUACHITA RIVER SCHOOL DIST.	702.54	-0.86%	72.66%	95.04%	4.96%	74.56%	5.72%
5801000	ATKINS SCHOOL DIST.	1,012.86	-7.09%	53.70%	95.82%	4.18%	73.28%	1.52%
5802000	DOVER SCHOOL DIST.	1,373.18	0.76%	50.99%	95.91%	4.09%	72.80%	8.62%
5803000	HECTOR SCHOOL DIST.	614.01	-12.71%	69.81%	96.17%	3.83%	76.13%	12.53%
5804000	POTTSVILLE SCHOOL DIST.	1,591.52	29.56%	40.64%	93.32%	6.68%	79.31%	10.78%
5805000	RUSSELLVILLE SCHOOL DIST.	5,100.23	0.62%	53.16%	74.61%	25.39%	77.89%	17.24%
5901000	DES ARC SCHOOL DIST.	612.73	-6.72%	60.56%	87.56%	12.44%	71.71%	18.81%
5903000	HAZEN SCHOOL DIST.	647.39	-12.13%	64.85%	65.89%	34.11%	57.52%	3.27%
6001000	LITTLE ROCK SCHOOL DIST.	23,076.68	-0.40%	64.79%	21.71%	78.29%	54.36%	7.77%
6002000	N. LITTLE ROCK SCHOOL DIST.	9,331.99	2.16%	62.46%	35.31%	64.69%	60.19%	14.28%
6003000	PULASKI CO. SPEC. SCHOOL DIST.	18,062.81	-5.52%	54.99%	49.82%	50.18%	61.42%	16.54%
6102000	MAYNARD SCHOOL DIST.	496.47	0.95%	69.68%	98.59%	1.41%	50.74%	1.74%
6103000	POCAHONTAS SCHOOL DIST.	1,828.49	1.69%	59.92%	95.30%	4.70%	77.62%	12.95%
6201000	FORREST CITY SCHOOL DIST.	3,420.53	-14.30%	100.00%	19.01%	80.99%	46.64%	11.67%
6202000	HUGHES SCHOOL DIST.	450.02	-37.76%	100.00%	17.60%	82.40%	22.92%	-13.98%
6205000	PALESTINE-WHEATLEY SCH. DIST.	617.30	-1.88%	81.47%	70.93%	29.07%	59.46%	25.37%
6301000	BAUXITE SCHOOL DIST.	1,384.89	32.27%	36.23%	96.30%	3.70%	65.65%	5.00%
6302000	BENTON SCHOOL DIST.	4,489.43	5.62%	35.08%	87.21%	12.79%	81.85%	16.73%
6303000	BRYANT SCHOOL DIST.	7,331.77	14.53%	29.16%	86.79%	13.21%	81.99%	6.93%
6304000	HARMONY GROVE SCHOOL DIST.	969.53	23.03%	42.18%	95.75%	4.25%	66.84%	14.44%
6401000	WALDRON SCHOOL DIST.	1,636.91	-2.13%	60.89%	79.33%	20.67%	66.72%	19.66%
6502000	SEARCY COUNTY SCHOOL DIST.	936.57	-9.98%	71.72%	97.53%	2.47%	74.46%	6.54%
6505000	OZARK MOUNTAIN SCHOOL DIST.	694.49	-8.40%	73.98%	95.64%	4.36%	64.03%	8.67%
6601000	FORT SMITH SCHOOL DIST.	13,686.38	7.23%	65.18%	51.29%	48.71%	64.20%	4.32%
6602000	GREENWOOD SCHOOL DIST.	3,500.47	10.01%	27.19%	91.74%	8.26%	83.53%	2.18%
6603000	HACKETT SCHOOL DIST.	626.92	11.19%	45.26%	93.10%	6.90%	67.23%	13.36%
6604000	HARTFORD SCHOOL DIST.	377.88	-12.27%	65.19%	90.13%	9.87%	51.97%	6.57%
6605000	LAVACA SCHOOL DIST.	878.56	5.02%	40.93%	94.22%	5.78%	69.76%	14.24%
6606000	MANSFIELD SCHOOL DIST.	987.59	-2.81%	46.61%	93.82%	6.18%	73.00%	16.97%
6701000	DEQUEEN SCHOOL DIST.	2,486.93	4.55%	71.79%	39.86%	60.14%	75.60%	20.37%
6703000	HORATIO SCHOOL DIST.	872.56	8.09%	62.23%	75.43%	24.57%	67.49%	16.93%
6802000	CAVE CITY SCHOOL DIST.	1,338.51	0.07%	65.92%	97.39%	2.61%	74.91%	10.34%
6804000	HIGHLAND SCHOOL DIST.	1,571.06	-1.93%	59.72%	96.70%	3.30%	77.48%	12.65%
6806000	TWIN RIVERS SCHOOL DIST.	350.17	-31.77%	78.15%	97.48%	2.52%	57.80%	5.01%
6901000	MOUNTAIN VIEW SCHOOL DIST.	1,650.09	-2.08%	59.77%	97.13%	2.87%	79.28%	5.67%

DISTRICT LEA	SCHEDULE 2 - 2009 STATISTICAL DATA DISTRICT	2009 3 QTR AVG. ADM with Magnet ADM and M to M	Five Year 3 QTR. AVG. ADM CHANGE	NSLA %	White %	Non- White %	2009 Weighted ACTAAP	Increase (Decrease) of 2009 ACTAAP versus 2007 ACTAAP
7001000	EL DORADO SCHOOL DIST.	4,607.21	0.00%	61.51%	41.71%	58.29%	67.70%	10.85%
7003000	JUNCTION CITY SCHOOL DIST.	584.37	-8.49%	50.26%	67.01%	32.99%	65.91%	12.94%
7006000	NORPHLET SCHOOL DIST.	440.90	-16.16%	47.90%	75.06%	24.94%	55.35%	16.89%
7007000	PARKERS CHAPEL SCHOOL DIST.	686.92	-1.65%	26.95%	91.16%	8.84%	87.76%	18.81%
7008000	SMACKOVER SCHOOL DIST.	861.57	-0.45%	45.54%	74.28%	25.72%	62.42%	8.98%
7009000	STRONG-HUTTIG SCHOOL DIST.	555.61	-17.98%	76.48%	40.39%	59.61%	41.38%	7.94%
7102000	CLINTON SCHOOL DIST.	1,300.68	-4.39%	62.07%	93.17%	6.83%	70.47%	10.27%
7104000	SHIRLEY SCHOOL DIST.	505.87	-3.74%	72.35%	97.65%	2.35%	68.24%	10.06%
7105000	SOUTH SIDE SCHOOL DIST.	511.73	2.91%	52.27%	96.25%	3.75%	71.87%	1.45%
7201000	ELKINS SCHOOL DIST.	1,144.23	11.79%	39.28%	89.98%	10.02%	73.40%	15.12%
7202000	FARMINGTON SCHOOL DIST.	2,116.75	15.59%	37.68%	90.96%	9.04%	77.02%	8.80%
7203000	FAYETTEVILLE SCHOOL DIST.	8,472.99	5.11%	36.28%	73.83%	26.17%	81.84%	5.84%
7204000	GREENLAND SCHOOL DIST.	804.86	-30.34%	50.98%	92.40%	7.60%	67.74%	9.75%
7205000	LINCOLN SCHOOL DIST.	1,240.33	9.47%	66.23%	82.27%	17.73%	67.81%	9.69%
7206000	PRAIRIE GROVE SCHOOL DIST.	1,700.21	24.05%	39.77%	94.17%	5.83%	76.87%	10.34%
7207000	SPRINGDALE SCHOOL DIST.	17,345.10	27.11%	56.42%	48.16%	51.84%	66.14%	13.61%
7208000	WEST FORK SCHOOL DIST.	1,257.83	10.46%	44.84%	94.68%	5.32%	78.05%	12.33%
7301000	BALD KNOB SCHOOL DIST.	1,308.03	-1.19%	62.06%	90.92%	9.08%	71.30%	12.15%
7302000	BEEBE SCHOOL DIST.	3,117.11	12.03%	42.64%	93.08%	6.92%	75.50%	10.79%
7303000	BRADFORD SCHOOL DIST.	501.00	-9.73%	63.42%	98.41%	1.59%	70.92%	12.72%
7304000	WHITE CO. CENTRAL SCHOOL DIST.	685.79	1.60%	54.65%	92.29%	7.71%	66.13%	-0.64%
7307000	RIVERVIEW SCHOOL DIST.	1,264.17	-1.53%	69.60%	77.75%	22.25%	73.80%	14.98%
7309000	PANGBURN SCHOOL DIST.	750.15	3.74%	55.54%	98.15%	1.85%	68.83%	1.77%
7310000	ROSE BUD SCHOOL DIST.	806.77	1.42%	53.42%	94.41%	5.59%	66.48%	9.32%
7311000	SEARCY SCHOOL DIST.	3,883.73	6.13%	41.31%	84.62%	15.38%	85.79%	5.83%
7401000	AUGUSTA SCHOOL DIST.	488.91	-32.80%	100.00%	36.40%	63.60%	36.92%	11.70%
7403000	MCCRORY SCHOOL DIST.	622.17	-4.36%	59.29%	86.91%	13.09%	73.77%	14.27%
7503000	DANVILLE SCHOOL DIST.	896.83	7.41%	74.61%	40.49%	59.51%	69.54%	7.72%
7504000	DARDANELLE SCHOOL DIST.	1,942.52	9.16%	62.60%	69.85%	30.15%	78.07%	12.46%
7509000	WESTERN YELL CO. SCHOOL DIST.	467.69	10.48%	72.30%	76.53%	23.47%	61.83%	-7.74%
7510000	TWO RIVERS SCHOOL DIST.	939.83	-14.54%	75.89%	88.47%	11.53%	68.13%	22.66%
	TOTALS	458,762.30						

1) 2009 ACTAAP data not available for Mena School District.

SCHEDULE 3 – 2009 EXPENDITURE PERCENTAGES BY DISTRICT

SCHEDULE 3 - 2009 EXPENDITURE PERCENTAGES BY DISTRICT	K-12 Instruction Percent	K-12 Support Services Student Percent	K-12 Support Services Instruction. Staff	K-12 School Admin.	K-12 Central Admin. and Support Services	K-12 Operations and Maint.	K-12 Student Transp.	K-12 Food Service Operations	K-12 Other Non-Instruct. Support Services	K-12 Expend. (Function 1000 - 3999)
DEWITT SCHOOL DIST.	57.24%	3.89%	8.66%	6.74%	4.41%	8.48%	4.72%	5.86%	0.00%	100.00%
STUTT GART SCHOOL DIST.	56.91%	3.94%	7.35%	5.25%	6.49%	11.40%	2.66%	5.78%	0.22%	100.00%
CROSSETT SCHOOL DIST.	56.48%	5.07%	8.11%	4.98%	4.03%	11.36%	4.11%	5.76%	0.09%	100.00%
HAMBURG SCHOOL DIST.	58.17%	5.77%	7.53%	4.64%	4.20%	8.77%	3.84%	6.97%	0.11%	100.00%
COTTER SCHOOL DIST.	63.00%	3.13%	4.11%	5.15%	5.11%	9.63%	3.76%	6.05%	0.07%	100.00%
MOUNTAIN HOME SCHOOL DIST.	59.90%	4.31%	7.25%	5.67%	3.49%	9.35%	4.80%	5.21%	0.01%	100.00%
NORFORK SCHOOL DIST.	57.31%	3.72%	6.68%	5.10%	6.66%	8.87%	4.65%	6.99%	0.02%	100.00%
BENTONVILLE SCHOOL DIST.	58.17%	6.20%	4.50%	5.96%	5.09%	8.89%	4.47%	4.61%	2.11%	100.00%
DECATUR SCHOOL DIST.	56.34%	4.67%	7.62%	5.03%	5.36%	11.37%	3.41%	6.20%	0.00%	100.00%
GENTRY SCHOOL DIST.	59.18%	4.65%	6.40%	4.60%	4.50%	10.90%	4.48%	5.29%	0.00%	100.00%
GRAVETTE SCHOOL DIST.	56.94%	4.03%	6.52%	4.86%	6.28%	10.05%	5.81%	5.52%	0.00%	100.00%
ROGERS SCHOOL DIST.	61.43%	4.70%	6.81%	5.85%	1.77%	9.19%	3.55%	5.65%	1.05%	100.00%
SIL OAM SPRINGS SCHOOL DIST.	58.43%	4.17%	8.34%	5.73%	3.17%	10.41%	3.98%	5.77%	0.00%	100.00%
PEA RIDGE SCHOOL DIST.	57.71%	4.26%	5.32%	6.63%	4.98%	9.88%	4.79%	6.42%	0.00%	100.00%
ALPENA SCHOOL DIST.	60.58%	2.93%	4.54%	5.46%	4.48%	8.64%	7.22%	5.57%	0.59%	100.00%
BERGMAN SCHOOL DIST.	63.70%	3.78%	5.27%	4.41%	3.37%	9.51%	3.39%	6.55%	0.01%	100.00%
HARRISON SCHOOL DIST.	57.27%	5.74%	5.94%	5.90%	5.83%	8.94%	4.63%	5.74%	0.01%	100.00%
OMAHA SCHOOL DIST.	58.19%	3.40%	6.63%	4.39%	4.49%	10.36%	4.98%	6.44%	1.12%	100.00%
VALLEY SPRINGS SCHOOL DIST.	60.45%	4.84%	7.49%	5.55%	4.59%	8.73%	3.40%	4.52%	0.42%	100.00%
LEAD HILL SCHOOL DIST.	58.18%	3.16%	3.66%	3.78%	7.96%	11.36%	5.97%	5.93%	0.00%	100.00%
HERMITAGE SCHOOL DIST.	55.67%	4.01%	6.35%	4.62%	4.94%	11.97%	5.23%	7.19%	0.01%	100.00%
WARREN SCHOOL DIST.	54.63%	4.61%	8.64%	6.88%	5.48%	9.01%	3.23%	6.61%	0.91%	100.00%
HAMPTON SCHOOL DIST.	54.62%	5.51%	9.82%	4.72%	4.51%	9.24%	4.12%	7.09%	0.37%	100.00%
BERRYVILLE SCHOOL DIST.	58.15%	5.38%	7.02%	4.05%	5.90%	8.73%	4.50%	6.26%	0.00%	100.00%
EUREKA SPRINGS SCHOOL DIST.	60.60%	5.67%	5.81%	6.12%	4.41%	7.38%	4.44%	5.56%	0.00%	100.00%
GREEN FOREST SCHOOL DIST.	55.95%	5.61%	9.12%	4.67%	4.05%	8.43%	4.97%	6.38%	0.83%	100.00%
DERMOTT SCHOOL DIST.	52.42%	2.87%	16.23%	3.70%	5.83%	8.14%	3.48%	6.48%	0.86%	100.00%
LAKESIDE SCHOOL DIST.	51.87%	4.27%	14.20%	4.31%	5.40%	9.20%	4.20%	6.55%	0.00%	100.00%
ARKADELPHIA SCHOOL DIST.	54.77%	4.14%	7.03%	5.02%	8.22%	9.80%	4.20%	5.42%	1.39%	100.00%
GURDON SCHOOL DIST.	57.51%	3.61%	9.39%	4.40%	4.08%	10.63%	4.24%	6.13%	0.00%	100.00%
CORNING SCHOOL DIST.	53.09%	3.20%	5.26%	4.16%	3.44%	22.81%	3.90%	4.15%	0.00%	100.00%
PIGGOTT SCHOOL DIST.	63.11%	3.53%	5.11%	4.74%	3.93%	9.99%	2.92%	6.67%	0.00%	100.00%
RECTOR SCHOOL DIST.	66.87%	3.00%	3.58%	4.00%	4.18%	9.68%	3.49%	5.21%	0.00%	100.00%
CONCORD SCHOOL DIST.	54.62%	7.53%	6.34%	3.59%	6.14%	10.76%	3.55%	5.67%	1.80%	100.00%
HEBER SPRINGS SCHOOL DIST.	60.07%	5.11%	5.39%	5.15%	3.44%	10.93%	2.97%	6.60%	0.35%	100.00%
QUITMAN SCHOOL DIST.	54.40%	3.64%	5.04%	4.21%	9.79%	10.09%	6.16%	6.46%	0.22%	100.00%

SCHEDULE 3 - 2009 EXPENDITURE PERCENTAGES BY DISTRICT

SCHEDULE 3 - 2009 EXPENDITURE PERCENTAGES BY DISTRICT DISTRICT	K-12 Instruction Percent	K-12 Support Services Student Percent	K-12 Support Services Instruction. Staff	K-12 School Admin.	K-12 Central Admin. and Support Services	K-12 Operations and Maint.	K-12 Student Transp.	K-12 Food Service Operations	K-12 Other Non-Instruct. Support Services	K-12 Expend. (Function 1000 - 3999)
WEST SIDE SCHOOL DIST.	61.34%	4.28%	3.75%	5.02%	5.17%	9.86%	5.08%	5.49%	0.00%	100.00%
WOODLAWN SCHOOL DIST.	61.18%	3.79%	4.64%	5.21%	6.66%	9.38%	3.52%	5.62%	0.00%	100.00%
CLEVELAND COUNTY SCHOOL DIST.	51.19%	6.47%	5.67%	4.38%	5.15%	10.50%	4.81%	5.61%	6.21%	100.00%
MAGNOLIA SCHOOL DIST.	57.50%	3.92%	5.53%	6.08%	4.16%	11.47%	5.62%	5.71%	0.00%	100.00%
EMERSON-TAYLOR SCHOOL DIST.	58.29%	3.60%	9.23%	6.85%	4.85%	9.03%	3.17%	4.97%	0.00%	100.00%
NEMO VISTA SCHOOL DIST.	53.50%	6.51%	4.11%	6.05%	5.49%	11.23%	5.94%	6.63%	0.53%	100.00%
WONDERVIEW SCHOOL DIST.	61.31%	3.82%	4.88%	5.89%	5.94%	8.30%	4.33%	5.46%	0.07%	100.00%
SO. CONWAY CO. SCHOOL DIST.	57.35%	4.89%	7.16%	5.35%	4.04%	10.20%	5.69%	5.21%	0.11%	100.00%
BAY SCHOOL DIST.	56.10%	2.70%	7.36%	6.03%	6.16%	10.33%	4.56%	6.76%	0.00%	100.00%
WESTSIDE CONS. SCHOOL DIST.	58.55%	5.76%	5.70%	4.55%	3.73%	9.97%	4.81%	6.35%	0.57%	100.00%
BROOKLAND SCHOOL DIST.	61.41%	3.91%	4.62%	5.00%	4.56%	10.04%	3.61%	5.47%	1.38%	100.00%
BUFFALO IS. CENTRAL SCH. DIST.	65.95%	3.27%	3.28%	6.22%	4.03%	9.70%	1.73%	5.83%	0.00%	100.00%
JONESBORO SCHOOL DIST.	56.20%	3.41%	10.37%	5.47%	3.67%	10.39%	3.14%	7.31%	0.03%	100.00%
NETTLETON SCHOOL DIST.	58.31%	5.58%	5.33%	6.07%	3.34%	10.20%	3.69%	5.98%	1.51%	100.00%
VALLEY VIEW SCHOOL DIST.	61.52%	3.72%	5.02%	4.71%	2.91%	12.38%	3.20%	6.55%	0.00%	100.00%
RIVERSIDE SCHOOL DIST.	61.46%	2.83%	8.28%	5.64%	4.46%	8.37%	3.16%	5.80%	0.00%	100.00%
ALMA SCHOOL DIST.	61.47%	3.54%	4.52%	4.73%	5.76%	9.14%	4.66%	6.19%	0.00%	100.00%
CEDARVILLE SCHOOL DIST.	57.65%	5.30%	7.15%	5.98%	4.85%	9.35%	4.53%	5.19%	0.01%	100.00%
MOUNTAINBURG SCHOOL DIST.	53.51%	6.12%	5.55%	6.00%	4.96%	10.12%	6.49%	6.68%	0.57%	100.00%
MULBERRY SCHOOL DIST.	55.61%	4.31%	8.11%	7.27%	5.24%	8.87%	4.82%	5.38%	0.39%	100.00%
VAN BUREN SCHOOL DIST.	56.54%	4.22%	8.68%	4.91%	4.73%	10.25%	3.33%	5.38%	1.95%	100.00%
EARLE SCHOOL DIST.	53.19%	6.18%	5.93%	3.71%	4.21%	17.58%	2.82%	6.37%	0.01%	100.00%
WEST MEMPHIS SCHOOL DIST.	58.69%	4.14%	9.47%	5.40%	4.34%	10.59%	1.26%	5.63%	0.48%	100.00%
MARION SCHOOL DIST.	61.69%	5.01%	5.29%	5.94%	3.95%	8.05%	4.18%	5.88%	0.01%	100.00%
TURRELL SCHOOL DIST.	50.86%	5.08%	9.88%	3.13%	11.40%	9.22%	3.04%	7.37%	0.01%	100.00%
CROSS COUNTY SCHOOL DIST.	53.37%	3.46%	13.83%	4.10%	5.54%	7.92%	5.44%	6.35%	0.00%	100.00%
WYNNE SCHOOL DIST.	61.57%	4.73%	6.55%	4.77%	4.52%	7.92%	4.34%	5.59%	0.02%	100.00%
FORDYCE SCHOOL DIST.	66.66%	4.23%	5.43%	4.93%	4.65%	7.30%	2.36%	4.43%	0.01%	100.00%
DUMAS SCHOOL DIST.	58.18%	3.90%	6.78%	4.57%	5.40%	11.38%	3.64%	6.14%	0.03%	100.00%
MCGEHEE SCHOOL DIST.	54.14%	5.19%	9.73%	5.65%	5.97%	8.93%	3.69%	6.70%	0.00%	100.00%
DREW CENTRAL SCHOOL DIST.	57.98%	5.38%	6.68%	5.50%	5.03%	7.81%	6.03%	5.59%	0.00%	100.00%
MONTICELLO SCHOOL DIST.	54.96%	5.27%	7.29%	5.62%	4.68%	10.90%	3.38%	5.79%	2.13%	100.00%
CONWAY SCHOOL DIST.	58.56%	5.36%	7.56%	6.59%	4.05%	10.19%	2.66%	4.94%	0.08%	100.00%
GREENBRIER SCHOOL DIST.	59.20%	6.26%	6.94%	5.13%	5.81%	8.01%	3.54%	5.12%	0.01%	100.00%
GUY-PERKINS SCHOOL DIST.	57.06%	4.14%	6.86%	6.52%	4.47%	10.86%	3.66%	6.41%	0.01%	100.00%
MAYFLOWER SCHOOL DIST.	58.55%	4.35%	5.51%	5.42%	5.35%	9.27%	5.77%	5.70%	0.06%	100.00%
MT. VERNON/ENOLA SCHOOL DIST.	56.31%	3.03%	6.59%	5.87%	5.38%	10.86%	3.55%	6.94%	1.46%	100.00%

SCHEDULE 3 - 2009 EXPENDITURE PERCENTAGES BY DISTRICT

SCHEDULE 3 - 2009 EXPENDITURE PERCENTAGES BY DISTRICT	K-12 Instruction Percent	K-12 Support Services Student Percent	K-12 Support Services Instruction. Staff	K-12 School Admin.	K-12 Central Admin. and Support Services	K-12 Operations and Maint.	K-12 Student Transp.	K-12 Food Service Operations	K-12 Other Non-Instruct. Support Services	K-12 Expend. (Function 1000 - 3999)
VILONIA SCHOOL DIST.	56.93%	6.06%	5.55%	5.54%	4.12%	9.00%	4.13%	6.44%	2.24%	100.00%
CHARLESTON SCHOOL DIST.	61.83%	5.49%	5.74%	5.43%	4.45%	8.77%	3.24%	4.83%	0.21%	100.00%
COUNTY LINE SCHOOL DIST.	57.55%	5.64%	4.78%	5.34%	6.75%	7.46%	6.11%	6.37%	0.00%	100.00%
OZARK SCHOOL DIST.	57.33%	5.18%	8.18%	5.25%	3.51%	10.73%	4.77%	5.06%	0.00%	100.00%
MAMMOTH SPRING SCHOOL DIST.	62.85%	5.23%	3.75%	5.34%	5.47%	7.14%	3.88%	6.34%	0.00%	100.00%
SALEM SCHOOL DIST.	61.15%	3.79%	4.64%	3.71%	5.20%	8.86%	4.58%	7.21%	0.87%	100.00%
VIOLA SCHOOL DIST.	60.06%	4.97%	2.95%	5.08%	5.40%	8.56%	6.47%	6.52%	0.00%	100.00%
CUTTER-MORNING STAR SCH. DIST.	59.47%	5.36%	7.40%	4.57%	8.23%	7.67%	2.39%	4.91%	0.00%	100.00%
FOUNTAIN LAKE SCHOOL DIST.	54.82%	5.43%	9.84%	4.37%	5.56%	10.48%	4.99%	4.40%	0.12%	100.00%
HOT SPRINGS SCHOOL DIST.	55.40%	4.52%	9.30%	4.55%	6.57%	10.89%	2.70%	5.51%	0.56%	100.00%
JESSIEVILLE SCHOOL DIST.	62.21%	5.08%	2.80%	4.51%	5.05%	9.93%	5.51%	4.90%	0.00%	100.00%
LAKE HAMILTON SCHOOL DIST.	56.26%	4.91%	5.55%	5.55%	5.89%	8.53%	5.41%	7.90%	0.01%	100.00%
LAKESIDE SCHOOL DIST.	58.06%	3.99%	6.63%	5.10%	6.25%	10.97%	4.92%	4.02%	0.05%	100.00%
MOUNTAIN PINE SCHOOL DIST.	56.77%	5.60%	10.00%	4.69%	4.58%	9.00%	3.31%	6.06%	0.00%	100.00%
POYEN SCHOOL DIST.	60.22%	2.73%	7.29%	5.31%	5.93%	9.14%	2.87%	5.59%	0.92%	100.00%
SHERIDAN SCHOOL DIST.	58.88%	4.33%	5.53%	5.22%	5.51%	9.03%	4.68%	6.80%	0.01%	100.00%
MARMADUKE SCHOOL DIST.	54.26%	3.65%	9.26%	3.42%	5.70%	8.79%	4.89%	6.83%	3.21%	100.00%
GREENE CO. TECH SCHOOL DIST.	56.68%	5.54%	5.74%	6.21%	4.54%	9.00%	5.70%	6.24%	0.36%	100.00%
PARAGOULD SCHOOL DIST.	57.92%	4.57%	7.80%	5.12%	4.84%	9.43%	3.40%	6.29%	0.62%	100.00%
BLEVINS SCHOOL DIST.	55.13%	4.51%	13.88%	5.23%	3.37%	8.61%	3.80%	5.47%	0.00%	100.00%
HOPE SCHOOL DIST.	60.80%	3.89%	7.26%	4.50%	4.57%	9.40%	3.78%	5.36%	0.45%	100.00%
SPRING HILL SCHOOL DIST.	62.66%	4.14%	5.48%	4.53%	7.56%	7.74%	2.35%	5.55%	0.00%	100.00%
BISMARCK SCHOOL DIST.	58.68%	4.41%	5.24%	4.26%	6.06%	9.39%	5.96%	5.99%	0.00%	100.00%
GLEN ROSE SCHOOL DIST.	60.32%	4.56%	5.61%	4.55%	4.04%	10.55%	3.68%	6.35%	0.33%	100.00%
MAGNET COVE SCHOOL DIST.	53.17%	4.78%	8.31%	6.44%	5.41%	11.92%	4.37%	5.61%	0.00%	100.00%
MALVERN SCHOOL DIST.	56.43%	6.58%	8.23%	5.22%	4.39%	8.98%	4.44%	5.68%	0.06%	100.00%
OUACHITA SCHOOL DIST.	59.96%	4.50%	5.39%	4.38%	5.45%	11.11%	3.11%	6.09%	0.00%	100.00%
DIERKS SCHOOL DIST.	64.56%	4.76%	3.83%	2.73%	4.58%	8.30%	3.85%	7.39%	0.00%	100.00%
MINERAL SPRINGS SCHOOL DIST.	60.71%	4.28%	7.27%	4.76%	5.06%	7.66%	3.42%	6.83%	0.01%	100.00%
NASHVILLE SCHOOL DIST.	62.67%	4.03%	5.69%	5.57%	3.69%	7.61%	3.84%	6.91%	0.00%	100.00%
BATESVILLE SCHOOL DIST.	50.31%	3.28%	6.08%	4.28%	3.91%	15.30%	4.55%	6.68%	5.61%	100.00%
CUSHMAN SCHOOL DIST.	53.54%	4.06%	6.59%	4.65%	9.83%	8.93%	6.86%	5.53%	0.01%	100.00%
SOUTHSIDE SCHOOL DIST.	58.48%	5.20%	5.10%	4.96%	4.22%	9.50%	4.04%	6.27%	2.23%	100.00%
MIDLAND SCHOOL DIST.	57.42%	3.55%	5.42%	2.98%	5.22%	11.29%	6.24%	7.88%	0.00%	100.00%
CEDAR RIDGE SCHOOL DIST.	53.64%	3.49%	5.90%	4.20%	5.70%	14.34%	5.78%	5.92%	1.02%	100.00%
CALICO ROCK SCHOOL DIST.	52.14%	3.86%	10.18%	4.66%	5.74%	10.84%	4.01%	8.55%	0.01%	100.00%
MELBOURNE SCHOOL DIST.	57.76%	3.90%	3.59%	4.92%	4.78%	11.17%	6.04%	7.85%	0.00%	100.00%

SCHEDULE 3 - 2009 EXPENDITURE PERCENTAGES BY DISTRICT

SCHEDULE 3 - 2009 EXPENDITURE PERCENTAGES BY DISTRICT	K-12 Instruction Percent	K-12 Support Services Student Percent	K-12 Support Services Instruction. Staff	K-12 School Admin.	K-12 Central Admin. and Support Services	K-12 Operations and Maint.	K-12 Student Transp.	K-12 Food Service Operations	K-12 Other Non-Instruct. Support Services	K-12 Expend. (Function 1000 - 3999)
IZARD CO. CONS. SCHOOL DIST.	52.87%	3.22%	8.38%	4.90%	5.48%	10.09%	6.80%	8.27%	0.00%	100.00%
NEWPORT SCHOOL DIST.	56.47%	3.78%	7.62%	6.06%	5.04%	10.02%	3.15%	7.63%	0.22%	100.00%
JACKSON CO. SCHOOL DIST.	58.14%	2.67%	5.41%	4.87%	4.79%	12.87%	3.59%	6.98%	0.68%	100.00%
DOLLARWAY SCHOOL DIST.	50.15%	5.92%	11.52%	4.89%	4.58%	12.61%	3.95%	6.38%	0.00%	100.00%
PINE BLUFF SCHOOL DIST.	57.84%	3.73%	7.16%	4.54%	5.00%	11.97%	3.94%	5.66%	0.15%	100.00%
WATSON CHAPEL SCHOOL DIST.	57.85%	3.95%	8.23%	6.26%	3.38%	10.02%	5.08%	5.24%	0.00%	100.00%
WHITE HALL SCHOOL DIST.	59.72%	4.44%	7.90%	5.18%	4.00%	10.59%	3.02%	5.16%	0.01%	100.00%
CLARKSVILLE SCHOOL DIST.	60.58%	3.71%	6.17%	5.82%	5.66%	8.39%	3.22%	6.33%	0.11%	100.00%
LAMAR SCHOOL DIST.	62.35%	4.08%	5.50%	4.13%	4.95%	9.54%	3.95%	5.44%	0.06%	100.00%
WESTSIDE SCHOOL DIST.	58.66%	4.60%	8.88%	4.18%	5.42%	6.32%	5.63%	6.02%	0.29%	100.00%
BRADLEY SCHOOL DIST.	59.43%	0.91%	5.37%	3.90%	7.13%	10.09%	5.66%	7.52%	0.00%	100.00%
LAFAYETTE COUNTY SCHOOL DIST.	56.83%	4.17%	7.25%	3.37%	7.71%	9.09%	5.43%	6.12%	0.04%	100.00%
HOXIE SCHOOL DIST.	59.89%	4.21%	7.67%	4.44%	3.80%	8.37%	3.92%	6.76%	0.93%	100.00%
SLOAN-HENDRIX SCHOOL DIST.	56.72%	3.92%	7.33%	5.47%	7.78%	8.56%	3.48%	6.19%	0.55%	100.00%
HILLCREST SCHOOL DIST.	53.86%	3.63%	6.92%	3.26%	6.70%	10.87%	5.57%	7.71%	1.49%	100.00%
LAWRENCE COUNTY SCHOOL DIST.	63.30%	3.67%	3.98%	5.47%	5.55%	10.10%	2.77%	5.15%	0.02%	100.00%
LEE COUNTY SCHOOL DIST.	54.06%	4.97%	11.85%	3.41%	5.46%	9.67%	4.67%	5.92%	0.00%	100.00%
STAR CITY SCHOOL DIST.	55.69%	6.27%	5.54%	6.04%	5.23%	9.28%	5.38%	5.82%	0.73%	100.00%
ASHDOWN SCHOOL DIST.	54.77%	4.67%	9.36%	5.80%	3.66%	11.17%	4.37%	5.98%	0.22%	100.00%
FOREMAN SCHOOL DIST.	53.49%	6.63%	7.15%	5.42%	6.12%	10.90%	3.59%	6.71%	0.00%	100.00%
BOONEVILLE SCHOOL DIST.	58.90%	3.92%	5.78%	5.15%	5.58%	9.46%	3.89%	6.37%	0.96%	100.00%
MAGAZINE SCHOOL DIST.	54.74%	5.90%	5.75%	3.39%	5.64%	11.62%	3.96%	7.76%	1.24%	100.00%
PARIS SCHOOL DIST.	54.61%	4.38%	8.51%	5.53%	5.00%	10.52%	3.84%	6.14%	1.47%	100.00%
SCRANTON SCHOOL DIST.	55.30%	4.27%	6.53%	5.32%	5.94%	11.75%	6.26%	4.62%	0.00%	100.00%
LONOKE SCHOOL DIST.	55.36%	4.87%	6.74%	6.21%	4.95%	10.63%	4.90%	6.34%	0.00%	100.00%
ENGLAND SCHOOL DIST.	60.71%	4.30%	8.10%	3.90%	5.91%	8.59%	3.44%	5.05%	0.01%	100.00%
CARLISLE SCHOOL DIST.	61.59%	4.29%	7.50%	3.46%	4.17%	11.26%	3.30%	4.44%	0.00%	100.00%
CABOT SCHOOL DIST.	60.37%	4.88%	7.82%	4.90%	3.54%	9.01%	4.52%	4.43%	0.54%	100.00%
HUNTSVILLE SCHOOL DIST.	57.94%	3.55%	7.40%	4.78%	4.61%	9.01%	6.03%	5.90%	0.78%	100.00%
FLIPPIN SCHOOL DIST.	58.26%	3.45%	4.60%	5.17%	4.56%	14.95%	3.37%	5.31%	0.33%	100.00%
YELLVILLE-SUMMIT SCHOOL DIST.	59.85%	5.10%	5.74%	4.46%	4.78%	9.00%	5.04%	5.60%	0.43%	100.00%
GENOA CENTRAL SCHOOL DIST.	61.52%	4.20%	6.05%	4.22%	5.11%	8.79%	5.63%	4.47%	0.01%	100.00%
FOUKE SCHOOL DIST.	57.39%	4.73%	4.77%	5.04%	5.07%	12.68%	5.23%	5.09%	0.01%	100.00%
TEXARKANA SCHOOL DIST.	51.32%	4.29%	13.94%	5.24%	4.75%	11.48%	3.02%	5.94%	0.03%	100.00%
ARMOREL SCHOOL DIST.	60.68%	2.19%	6.59%	4.99%	6.55%	11.26%	2.57%	5.17%	0.00%	100.00%
BLYTHEVILLE SCHOOL DIST.	55.64%	3.51%	9.03%	5.61%	4.32%	13.11%	3.41%	5.38%	0.00%	100.00%
SO. MISS. COUNTY SCHOOL DIST.	54.48%	5.43%	8.75%	3.77%	4.86%	11.20%	4.58%	6.83%	0.11%	100.00%

SCHEDULE 3 - 2009 EXPENDITURE PERCENTAGES BY DISTRICT

SCHEDULE 3 - 2009 EXPENDITURE PERCENTAGES BY DISTRICT DISTRICT	K-12 Instruction Percent	K-12 Support Services Student Percent	K-12 Support Services Instruction. Staff	K-12 School Admin.	K-12 Central Admin. and Support Services	K-12 Operations and Maint.	K-12 Student Transp.	K-12 Food Service Operations	K-12 Other Non-Instruct. Support Services	K-12 Expend. (Function 1000 - 3999)
GOSNELL SCHOOL DIST.	59.15%	3.84%	5.24%	5.95%	5.41%	9.34%	4.43%	6.38%	0.26%	100.00%
MANILA SCHOOL DIST.	61.20%	4.51%	5.12%	6.34%	4.70%	9.07%	3.38%	5.68%	0.00%	100.00%
OSCEOLA SCHOOL DIST.	54.38%	6.11%	11.67%	4.60%	3.83%	10.94%	1.94%	6.53%	0.00%	100.00%
BRINKLEY SCHOOL DIST.	55.25%	5.22%	7.40%	3.88%	9.64%	9.22%	2.48%	6.91%	0.00%	100.00%
CLARENDON SCHOOL DIST.	55.12%	3.49%	10.57%	4.10%	7.28%	11.13%	2.50%	5.73%	0.10%	100.00%
CADDO HILLS SCHOOL DIST.	59.35%	3.68%	5.31%	3.98%	5.63%	10.07%	5.06%	6.78%	0.15%	100.00%
MOUNT IDA SCHOOL DIST.	56.71%	4.66%	6.43%	4.96%	4.23%	11.24%	4.16%	7.09%	0.50%	100.00%
PRESCOTT SCHOOL DIST.	54.00%	4.27%	8.45%	5.35%	9.10%	9.54%	3.49%	5.79%	0.00%	100.00%
NEVADA SCHOOL DIST.	50.39%	5.58%	6.79%	5.60%	7.05%	9.70%	6.19%	8.69%	0.00%	100.00%
JASPER SCHOOL DIST.	53.94%	4.21%	4.80%	6.41%	4.30%	10.72%	10.24%	5.19%	0.18%	100.00%
DEER/MT. JUDEA SCHOOL DIST.	57.11%	2.10%	7.52%	3.99%	6.65%	9.05%	7.25%	6.34%	0.00%	100.00%
BEARDEN SCHOOL DIST.	56.69%	3.68%	8.11%	5.77%	5.96%	9.56%	3.47%	6.17%	0.59%	100.00%
CAMDEN FAIRVIEW SCHOOL DIST.	52.15%	6.73%	9.33%	6.32%	4.32%	10.09%	4.32%	6.65%	0.09%	100.00%
HARMONY GROVE SCHOOL DIST.	58.45%	4.14%	9.21%	4.69%	3.79%	8.77%	5.33%	5.62%	0.00%	100.00%
STEPHENS SCHOOL DIST.	54.65%	4.20%	12.55%	2.90%	7.87%	6.57%	4.53%	6.73%	0.00%	100.00%
EAST END SCHOOL DIST.	56.66%	3.74%	6.88%	4.43%	6.20%	9.44%	5.58%	7.06%	0.00%	100.00%
PERRYVILLE SCHOOL DIST.	59.90%	5.06%	3.24%	5.36%	6.00%	9.39%	5.25%	5.79%	0.00%	100.00%
BARTON-LEXA SCHOOL DIST.	59.50%	3.45%	3.20%	4.25%	8.21%	12.26%	2.94%	6.20%	0.00%	100.00%
HELENA/ W.HELENA SCHOOL DIST.	54.17%	3.58%	9.35%	5.56%	6.23%	11.18%	3.75%	6.17%	0.00%	100.00%
MARVELL SCHOOL DIST.	59.42%	4.00%	11.45%	3.00%	5.20%	9.33%	2.85%	4.75%	0.00%	100.00%
DELIGHT SCHOOL DIST.	60.20%	2.99%	4.09%	4.98%	9.90%	9.40%	2.25%	6.19%	0.00%	100.00%
CENTERPOINT SCHOOL DIST.	57.58%	3.06%	6.04%	6.32%	5.51%	10.63%	4.11%	6.75%	0.00%	100.00%
KIRBY SCHOOL DIST.	64.35%	2.75%	5.24%	3.82%	4.23%	9.05%	4.12%	5.71%	0.73%	100.00%
MURFREESBORO SCHOOL DIST.	60.72%	6.10%	4.37%	5.83%	6.07%	8.29%	3.04%	5.59%	0.00%	100.00%
HARRISBURG SCHOOL DIST.	56.51%	7.37%	7.52%	4.02%	5.61%	9.29%	4.78%	4.89%	0.00%	100.00%
MARKED TREE SCHOOL DIST.	58.87%	3.89%	10.64%	4.38%	5.75%	8.48%	2.53%	5.45%	0.01%	100.00%
TRUMANN SCHOOL DIST.	58.52%	5.04%	10.83%	4.98%	3.23%	8.91%	2.89%	5.59%	0.00%	100.00%
WEINER SCHOOL DIST.	61.24%	3.04%	3.28%	6.24%	6.33%	10.93%	4.67%	4.25%	0.01%	100.00%
EAST POINSETT CO. SCHOOL DIST.	57.20%	2.83%	8.51%	5.08%	4.86%	10.82%	3.27%	6.98%	0.47%	100.00%
MENA SCHOOL DIST.	61.92%	5.39%	6.92%	4.61%	3.12%	7.23%	4.92%	5.89%	0.00%	100.00%
VAN COVE SCHOOL DIST.	55.14%	4.69%	7.68%	6.24%	7.01%	8.73%	3.46%	7.06%	0.00%	100.00%
WICKES SCHOOL DIST.	60.52%	5.07%	4.05%	4.94%	5.22%	9.37%	4.48%	5.85%	0.50%	100.00%
OUACHITA RIVER SCHOOL DIST.	55.03%	4.48%	9.50%	5.97%	4.66%	8.61%	4.60%	5.99%	1.16%	100.00%
ATKINS SCHOOL DIST.	59.51%	5.92%	6.91%	4.22%	4.68%	9.66%	3.20%	5.89%	0.00%	100.00%
DOVER SCHOOL DIST.	58.68%	5.21%	5.64%	5.00%	4.88%	9.76%	5.02%	5.81%	0.00%	100.00%
HECTOR SCHOOL DIST.	55.91%	5.08%	8.00%	4.46%	5.20%	10.67%	5.49%	5.18%	0.01%	100.00%
POTTSVILLE SCHOOL DIST.	62.79%	4.40%	6.28%	5.03%	3.43%	9.92%	2.89%	5.27%	0.00%	100.00%

SCHEDULE 3 - 2009 EXPENDITURE PERCENTAGES BY DISTRICT

SCHEDULE 3 - 2009 EXPENDITURE PERCENTAGES BY DISTRICT DISTRICT	K-12 Instruction Percent	K-12 Support Services Student Percent	K-12 Support Services Instruction. Staff	K-12 School Admin.	K-12 Central Admin. and Support Services	K-12 Operations and Maint.	K-12 Student Transp.	K-12 Food Service Operations	K-12 Other Non-Instruct. Support Services	K-12 Expend. (Function 1000 - 3999)
RUSSELLVILLE SCHOOL DIST.	58.05%	4.64%	8.26%	4.95%	3.98%	11.25%	3.15%	5.56%	0.17%	100.00%
DES ARC SCHOOL DIST.	57.05%	3.62%	5.71%	4.49%	7.02%	11.90%	4.07%	6.32%	-0.19%	100.00%
HAZEN SCHOOL DIST.	53.16%	5.35%	6.66%	6.42%	4.84%	11.77%	4.21%	6.77%	0.82%	100.00%
LITTLE ROCK SCHOOL DIST.	56.92%	4.72%	8.87%	5.69%	4.15%	9.42%	5.64%	4.03%	0.57%	100.00%
N. LITTLE ROCK SCHOOL DIST.	53.69%	8.48%	7.84%	5.46%	5.05%	8.66%	4.65%	6.07%	0.11%	100.00%
PULASKI CO. SPEC. SCHOOL DIST.	56.44%	5.68%	7.08%	6.15%	5.19%	8.48%	5.85%	5.04%	0.08%	100.00%
MAYNARD SCHOOL DIST.	60.76%	3.96%	3.04%	5.39%	6.72%	9.21%	4.85%	6.07%	0.00%	100.00%
POCAHONTAS SCHOOL DIST.	60.65%	4.67%	5.71%	5.30%	3.08%	9.86%	3.62%	6.52%	0.58%	100.00%
FORREST CITY SCHOOL DIST.	54.20%	5.56%	9.96%	5.38%	4.70%	9.68%	3.70%	6.75%	0.09%	100.00%
HUGHES SCHOOL DIST.	59.26%	2.66%	8.17%	3.56%	8.48%	10.60%	2.41%	4.85%	0.00%	100.00%
PALESTINE-WHEATLEY SCH. DIST.	50.88%	4.85%	4.90%	6.16%	9.46%	11.12%	4.80%	7.95%	-0.13%	100.00%
BAUXITE SCHOOL DIST.	60.65%	5.43%	6.56%	4.07%	3.88%	10.57%	3.76%	4.96%	0.13%	100.00%
BENTON SCHOOL DIST.	59.62%	4.75%	6.99%	5.72%	5.16%	9.82%	2.82%	4.84%	0.29%	100.00%
BRYANT SCHOOL DIST.	63.00%	5.32%	6.53%	4.73%	3.18%	9.74%	3.24%	4.26%	0.00%	100.00%
HARMONY GROVE SCHOOL DIST.	62.87%	3.60%	5.19%	5.21%	4.80%	11.00%	1.50%	5.08%	0.75%	100.00%
WALDRON SCHOOL DIST.	57.78%	4.60%	4.85%	5.01%	4.90%	10.32%	5.37%	5.78%	1.40%	100.00%
SEARCY COUNTY SCHOOL DIST.	57.07%	4.53%	9.11%	4.89%	4.55%	8.70%	5.00%	5.91%	0.23%	100.00%
OZARK MOUNTAIN SCHOOL DIST.	57.88%	4.41%	6.03%	5.40%	5.57%	9.55%	5.30%	5.62%	0.27%	100.00%
FORT SMITH SCHOOL DIST.	55.99%	6.95%	9.56%	5.64%	2.78%	11.13%	2.03%	5.29%	0.62%	100.00%
GREENWOOD SCHOOL DIST.	59.28%	4.64%	6.32%	5.31%	4.75%	10.04%	4.95%	4.08%	0.63%	100.00%
HACKETT SCHOOL DIST.	59.78%	5.36%	6.01%	4.96%	5.70%	10.14%	2.21%	4.82%	1.03%	100.00%
HARTFORD SCHOOL DIST.	54.48%	4.25%	11.50%	6.35%	5.55%	8.71%	3.51%	5.65%	0.00%	100.00%
LAVACA SCHOOL DIST.	54.94%	4.68%	7.79%	5.44%	7.82%	10.18%	2.81%	6.26%	0.08%	100.00%
MANSFIELD SCHOOL DIST.	59.11%	4.41%	8.60%	5.24%	5.50%	8.18%	3.89%	5.05%	0.01%	100.00%
DEQUEEN SCHOOL DIST.	61.46%	3.42%	5.55%	5.55%	4.33%	9.82%	3.00%	6.86%	0.01%	100.00%
HORATIO SCHOOL DIST.	58.69%	5.60%	8.75%	4.83%	4.39%	8.30%	3.57%	5.86%	0.00%	100.00%
CAVE CITY SCHOOL DIST.	56.48%	3.94%	6.41%	4.56%	4.05%	10.16%	5.93%	7.65%	0.82%	100.00%
HIGHLAND SCHOOL DIST.	58.24%	3.85%	7.44%	5.66%	2.61%	9.50%	6.57%	6.12%	0.00%	100.00%
TWIN RIVERS SCHOOL DIST.	55.61%	5.10%	7.11%	4.92%	4.49%	10.33%	6.17%	6.26%	0.00%	100.00%
MOUNTAIN VIEW SCHOOL DIST.	62.85%	3.65%	4.80%	5.99%	3.26%	8.31%	5.63%	5.51%	0.00%	100.00%
EL DORADO SCHOOL DIST.	60.26%	6.07%	6.98%	4.67%	4.78%	8.40%	3.79%	5.04%	0.01%	100.00%
JUNCTION CITY SCHOOL DIST.	59.59%	2.23%	8.02%	2.45%	4.49%	10.74%	5.08%	7.40%	0.00%	100.00%
NORPHLET SCHOOL DIST.	57.21%	4.90%	7.70%	5.22%	8.38%	9.25%	2.49%	4.86%	0.00%	100.00%
PARKERS CHAPEL SCHOOL DIST.	65.86%	5.29%	3.09%	4.19%	6.28%	8.18%	2.34%	4.77%	0.00%	100.00%
SMACKOVER SCHOOL DIST.	56.66%	4.28%	9.97%	3.09%	6.94%	10.55%	2.74%	5.69%	0.08%	100.00%
STRONG-HUTTIG SCHOOL DIST.	51.32%	5.46%	7.76%	5.88%	7.45%	11.00%	4.59%	6.54%	0.00%	100.00%
CLINTON SCHOOL DIST.	57.17%	6.03%	5.35%	4.84%	4.22%	9.81%	5.02%	7.56%	0.00%	100.00%

SCHEDULE 3 - 2009 EXPENDITURE PERCENTAGES BY DISTRICT

SCHEDULE 3 - 2009 EXPENDITURE PERCENTAGES BY DISTRICT DISTRICT	K-12 Instruction Percent	K-12 Support Services Student Percent	K-12 Support Services Instruction. Staff	K-12 School Admin.	K-12 Central Admin. and Support Services	K-12 Operations and Maint.	K-12 Student Transp.	K-12 Food Service Operations	K-12 Other Non-Instruct. Support Services	K-12 Expend. (Function 1000 - 3999)
SHIRLEY SCHOOL DIST.	59.51%	3.68%	3.28%	4.52%	6.48%	10.70%	6.05%	5.77%	0.00%	100.00%
SOUTH SIDE SCHOOL DIST.	58.23%	6.82%	4.75%	3.65%	5.85%	8.25%	5.59%	5.45%	1.42%	100.00%
ELKINS SCHOOL DIST.	58.47%	4.68%	4.86%	6.24%	5.75%	8.72%	5.80%	5.49%	0.00%	100.00%
FARMINGTON SCHOOL DIST.	58.49%	4.04%	6.45%	5.49%	5.03%	10.19%	3.68%	6.56%	0.08%	100.00%
FAYETTEVILLE SCHOOL DIST.	60.30%	4.51%	6.12%	5.05%	6.84%	10.22%	3.12%	3.78%	0.08%	100.00%
GREENLAND SCHOOL DIST.	58.19%	4.56%	6.20%	6.51%	6.17%	8.98%	4.15%	5.24%	0.00%	100.00%
LINCOLN SCHOOL DIST.	48.93%	4.97%	13.32%	6.88%	4.89%	9.40%	4.83%	5.86%	0.92%	100.00%
PRAIRIE GROVE SCHOOL DIST.	59.55%	3.56%	5.35%	7.37%	6.06%	8.75%	3.74%	5.45%	0.17%	100.00%
SPRINGDALE SCHOOL DIST.	61.78%	3.82%	7.32%	5.76%	3.03%	10.25%	2.71%	5.31%	0.00%	100.00%
WEST FORK SCHOOL DIST.	59.47%	6.17%	4.32%	4.52%	4.75%	9.12%	5.65%	5.84%	0.16%	100.00%
BALD KNOB SCHOOL DIST.	60.14%	5.14%	5.32%	4.92%	6.58%	8.79%	2.01%	5.54%	1.56%	100.00%
BEEBE SCHOOL DIST.	55.86%	4.22%	6.10%	6.07%	3.93%	10.32%	4.40%	6.67%	2.42%	100.00%
BRADFORD SCHOOL DIST.	59.53%	3.65%	5.82%	4.93%	6.46%	9.20%	4.09%	6.31%	0.00%	100.00%
WHITE CO. CENTRAL SCHOOL DIST.	56.18%	3.37%	6.34%	5.75%	6.56%	10.35%	4.74%	6.50%	0.20%	100.00%
RIVERVIEW SCHOOL DIST.	58.97%	5.02%	4.03%	5.46%	4.69%	9.33%	3.02%	9.30%	0.20%	100.00%
PANGBURN SCHOOL DIST.	56.87%	4.66%	5.60%	5.59%	4.90%	7.94%	6.19%	5.63%	2.62%	100.00%
ROSE BUD SCHOOL DIST.	60.21%	3.47%	5.06%	5.46%	5.61%	8.82%	5.23%	5.24%	0.90%	100.00%
SEARCY SCHOOL DIST.	58.52%	3.72%	5.91%	5.83%	3.58%	11.91%	3.78%	6.26%	0.48%	100.00%
AUGUSTA SCHOOL DIST.	54.44%	3.35%	11.48%	4.25%	5.79%	12.27%	3.08%	5.34%	0.00%	100.00%
MCCRORY SCHOOL DIST.	62.04%	3.67%	5.80%	4.71%	5.61%	8.94%	2.90%	6.31%	0.02%	100.00%
DANVILLE SCHOOL DIST.	61.77%	4.29%	7.06%	3.17%	6.20%	7.96%	3.11%	6.44%	0.00%	100.00%
DARDANELLE SCHOOL DIST.	61.99%	3.82%	4.61%	6.17%	4.34%	10.00%	3.09%	5.97%	0.00%	100.00%
WESTERN YELL CO. SCHOOL DIST.	52.04%	5.12%	8.81%	5.02%	5.58%	11.15%	5.12%	7.16%	0.00%	100.00%
TWO RIVERS SCHOOL DIST.	52.81%	5.28%	11.28%	5.58%	4.05%	10.42%	3.97%	6.49%	0.12%	100.00%
TOTALS	57.87%	4.80%	7.35%	5.33%	4.65%	9.87%	4.11%	5.59%	0.43%	100.00%

SCHEDULE 4 – FUND BALANCES BY DISTRICT

SCHEDULE 4 - FUND BALANCES BY DISTRICT		2009 Legal Balance (Teacher Salary, Operating, Debt Service Funds)	2009 Ending Unrestricted Fund Balance	2009 Categorical Fund Balance	Increase/ Decrease 2009 Legal Balance	Increase/ Decrease in Ending 2009 Unrestricted Fund Balance	Increase/Decrease 2009 Categorical Fund Balance
DISTRICT LEA	DISTRICT						
0101000	DEWITT SCHOOL DIST.	\$1,906,986.72	\$954,109.17	\$152,903.13	-\$877,262.30	-\$62,665.34	-\$205,634.85
0104000	STUTTGART SCHOOL DIST.	\$3,243,024.56	\$2,849,080.41	\$280,092.34	-\$336,119.66	-\$123,290.83	\$33,796.87
0201000	CROSSETT SCHOOL DIST.	\$5,502,939.20	\$5,083,246.76	\$201,845.18	\$560,094.60	\$388,975.98	\$105,587.84
0203000	HAMBURG SCHOOL DIST.	\$1,985,159.51	\$1,931,750.94	\$1,044.98	-\$788,749.37	-\$736,659.21	-\$76,745.50
0302000	COTTER SCHOOL DIST.	\$835,451.55	\$671,269.22	\$44,134.80	-\$159,044.46	-\$155,539.64	-\$3,905.86
0303000	MOUNTAIN HOME SCHOOL DIST.	\$1,668,364.68	\$1,298,815.69	\$42,348.87	\$1,042,985.43	\$915,637.64	-\$59,040.50
0304000	NORFORK SCHOOL DIST.	\$785,722.65	\$629,096.83	\$40,330.89	-\$269,073.08	-\$294,562.47	\$37,948.89
0401000	BENTONVILLE SCHOOL DIST.	\$5,050,185.25	\$4,605,225.90	\$356,018.28	\$270,117.74	-\$62,163.45	\$211,863.46
0402000	DECATUR SCHOOL DIST.	\$985,109.88	\$738,042.61	\$183,352.95	\$745,701.35	\$706,927.85	\$6,653.08
0403000	GENTRY SCHOOL DIST.	\$1,414,815.27	\$1,410,352.26	\$4,339.01	-\$63,052.34	-\$4,679.08	-\$50,322.90
0404000	GRAVETTE SCHOOL DIST.	\$2,083,972.96	\$1,718,820.61	\$85,038.56	-\$94,032.68	\$14,468.03	\$23,253.30
0405000	ROGERS SCHOOL DIST.	\$8,176,764.35	\$7,975,281.36	\$1.53	-\$44,846.23	-\$125,364.87	-\$99,969.31
0406000	SILOAM SPRINGS SCHOOL DIST.	\$5,725,373.40	\$5,582,086.77	\$140,109.92	\$993,083.59	\$1,041,618.10	-\$41,147.97
0407000	PEA RIDGE SCHOOL DIST.	\$1,568,420.23	\$1,451,311.39	\$5,110.28	\$227,071.01	\$159,576.95	-\$1,255.69
0501000	ALPENA SCHOOL DIST.	\$634,685.02	\$431,588.49	\$43,289.47	\$90,373.38	-\$71,093.33	\$11,423.17
0502000	BERGMAN SCHOOL DIST.	\$1,829,219.96	\$1,717,074.55	\$963.14	-\$598,789.03	-\$525,859.82	-\$27,784.95
0503000	HARRISON SCHOOL DIST.	\$1,798,929.77	\$490,913.79	\$0.00	\$607,177.14	-\$2,066,946.91	\$0.00
0504000	OMAHA SCHOOL DIST.	\$757,123.02	\$426,706.45	\$84,861.63	-\$73,721.84	-\$117,040.02	-\$108,060.30
0505000	VALLEY SPRINGS SCHOOL DIST.	\$965,805.39	\$269,132.80	\$2,723.00	-\$751,380.24	-\$840,479.85	-\$51,942.84
0506000	LEAD HILL SCHOOL DIST.	\$797,815.46	\$664,679.10	\$43,449.35	\$211,739.90	\$166,295.63	\$32,035.94
0601000	HERMITAGE SCHOOL DIST.	\$575,015.28	\$368,045.14	\$141,005.41	\$237,304.32	\$63,092.16	\$128,165.43
0602000	WARREN SCHOOL DIST.	\$1,575,398.70	\$420,058.85	\$141,947.17	\$99,501.30	\$38,009.71	-\$56,075.82
0701000	HAMPTON SCHOOL DIST.	\$965,804.82	\$940,391.28	\$15,482.90	-\$7,526.73	\$1,036.40	-\$12,321.46
0801000	BERRYVILLE SCHOOL DIST.	\$2,443,802.24	\$1,922,381.87	\$276,559.53	\$318,383.85	\$343,205.83	-\$263,995.30
0802000	EUREKA SPRINGS SCHOOL DIST.	\$1,221,348.27	\$1,176,291.63	\$5,268.45	\$128,135.24	\$146,770.88	-\$2,489.59
0803000	GREEN FOREST SCHOOL DIST.	\$1,373,463.78	\$1,213,948.27	\$37,094.83	\$503,543.68	\$444,198.97	-\$61,537.04
0901000	DERMOTT SCHOOL DIST.	\$1,341,224.35	\$825,473.82	\$258,483.62	-\$195,482.64	-\$92,758.82	-\$206,794.41
0903000	LAKESIDE SCHOOL DIST.	\$10,243,172.14	\$8,082,308.12	\$1,699,495.52	-\$104,955.56	-\$409,523.60	\$25,718.66
1002000	ARKADELPHIA SCHOOL DIST.	\$3,085,545.31	\$2,829,914.69	\$115,931.30	\$829,282.72	\$831,828.74	\$2,153.95
1003000	GURDON SCHOOL DIST.	\$727,240.26	\$692,745.57	\$1,717.37	\$83,194.58	\$80,956.29	-\$13,986.84
1101000	CORNING SCHOOL DIST.	\$1,764,854.44	\$1,245,540.81	\$131,361.35	-\$112,512.30	-\$179,692.70	\$58,251.27
1104000	PIGGOTT SCHOOL DIST.	\$1,219,956.88	\$972,735.59	\$73,589.51	\$133,785.61	\$28,791.41	\$17,699.63
1106000	RECTOR SCHOOL DIST.	\$748,070.55	\$628,945.08	\$33,756.60	-\$249,758.67	-\$634,524.80	\$16,355.93
1201000	CONCORD SCHOOL DIST.	\$1,146,481.45	\$1,030,260.87	\$29,850.47	\$630,946.37	\$735,449.90	-\$80,318.89

SCHEDULE 4 - FUND BALANCES BY DISTRICT

SCHEDULE 4 - FUND BALANCES BY DISTRICT		2009 Legal Balance (Teacher Salary, Operating, Debt Service Funds)	2009 Ending Unrestricted Fund Balance	2009 Categorical Fund Balance	Increase/ Decrease 2009 Legal Balance	Increase/ Decrease in Ending 2009 Unrestricted Fund Balance	Increase/Decrease 2009 Categorical Fund Balance
DISTRICT LEA	DISTRICT						
1202000	HEBER SPRINGS SCHOOL DIST.	\$843,390.77	\$596,149.26	\$42,005.37	\$248,010.92	\$211,750.75	-\$66,424.35
1203000	QUITMAN SCHOOL DIST.	\$2,161,977.59	\$1,491,408.04	\$3,376.65	\$403,791.46	\$211,543.94	-\$22,268.05
1204000	WEST SIDE SCHOOL DIST.	\$2,191,535.20	\$2,137,675.51	\$46,816.40	-\$850,808.40	-\$874,431.47	\$23,850.99
1304000	WOODLAWN SCHOOL DIST.	\$666,874.01	\$591,457.04	\$18,793.12	\$82,539.00	\$73,699.83	\$1,992.13
1305000	CLEVELAND COUNTY SCH. DIST.	\$1,490,536.83	\$1,369,390.19	\$7,904.03	\$100,845.43	\$282,125.41	\$2,550.99
1402000	MAGNOLIA SCHOOL DIST.	\$4,008,431.93	\$3,617,663.09	\$176,181.73	-\$1,025,969.12	-\$889,256.93	-\$3,392.70
1408000	EMERSON-TAYLOR SCHOOL DIST.	\$4,208,487.38	\$3,129,223.38	\$17,637.13	\$171,950.56	-\$111,024.63	-\$11,178.14
1503000	NEMO VISTA SCHOOL DIST.	\$1,654,658.43	\$1,396,126.09	\$8,262.77	\$491,027.11	\$495,399.69	-\$7,733.90
1505000	WONDERVIEW SCHOOL DIST.	\$659,725.09	\$538,209.36	\$29,244.04	\$35,923.56	\$82,326.98	\$4,150.95
1507000	SO. CONWAY CO. SCHOOL DIST.	\$1,831,084.65	\$1,188,450.75	\$207,609.49	\$196,295.72	-\$104,022.41	\$98,391.33
1601000	BAY SCHOOL DIST.	\$2,128,343.23	\$1,825,426.33	\$39,108.38	-\$229,453.96	-\$237,141.99	-\$56,671.04
1602000	WESTSIDE CONS. SCHOOL DIST.	\$1,304,434.59	\$1,091,315.25	\$7,910.98	\$715,486.06	\$734,815.65	-\$60,356.82
1603000	BROOKLAND SCHOOL DIST.	\$1,466,262.68	\$1,381,277.84	\$82,921.20	-\$243,508.79	-\$8,439.42	\$33,087.98
1605000	BUFFALO IS. CENTRAL SCH. DIST.	\$1,168,337.80	\$874,660.62	\$109,553.05	\$40,534.25	-\$78,961.12	\$17,948.65
1608000	JONESBORO SCHOOL DIST.	\$7,880,816.71	\$5,706,845.23	\$477,782.43	\$1,478,751.22	\$693,931.03	\$204,942.46
1611000	NETTLETON SCHOOL DIST.	\$1,211,134.35	\$1,024,829.95	\$1,349.04	-\$132,235.53	-\$49,531.85	-\$193,291.85
1612000	VALLEY VIEW SCHOOL DIST.	\$1,666,725.27	\$982,698.43	\$2,460.30	\$337,962.59	\$164,916.22	-\$7,452.78
1613000	RIVERSIDE SCHOOL DIST.	\$974,151.03	\$299,573.33	\$284,712.48	\$60,003.75	-\$68,578.95	\$71,619.56
1701000	ALMA SCHOOL DIST.	\$220,208.96	\$220,208.96	\$0.00	\$1,782.50	\$1,782.50	\$0.00
1702000	CEDARVILLE SCHOOL DIST.	\$2,617,964.18	\$1,975,270.23	\$18,753.09	\$577,238.81	\$416,423.69	\$2,303.29
1703000	MOUNTAINBURG SCHOOL DIST.	\$446,254.43	\$426,461.99	\$8,400.25	-\$315,036.57	-\$316,368.75	-\$8,399.51
1704000	MULBERRY SCHOOL DIST.	\$971,010.61	\$845,228.83	\$9,331.65	-\$746,270.90	-\$797,658.24	\$1,974.40
1705000	VAN BUREN SCHOOL DIST.	\$7,545,559.91	\$6,925,870.17	\$471,355.34	\$3,533,404.47	\$3,556,960.85	-\$8,241.18
1802000	EARLE SCHOOL DIST.	\$358,502.54	\$307,918.30	\$0.00	-\$207,689.77	-\$144,393.65	-\$35,618.62
1803000	WEST MEMPHIS SCHOOL DIST.	\$25,644,909.18	\$23,666,626.21	\$1,782,416.78	\$1,935,170.52	\$2,261,501.36	-\$216,378.31
1804000	MARION SCHOOL DIST.	\$3,757,222.56	\$3,234,449.60	\$149,209.60	\$1,296,902.57	\$1,228,513.23	-\$10,916.48
1805000	TURRELL SCHOOL DIST.	\$449,062.96	\$223,434.21	\$30,931.87	-\$130,617.90	-\$5,701.64	-\$120,935.85
1901000	CROSS COUNTY SCHOOL DIST.	\$1,978,719.39	\$1,680,289.13	\$33,372.11	-\$337,837.60	-\$229,889.39	-\$11,764.78
1905000	WYNNE SCHOOL DIST.	\$3,762,980.60	\$3,482,405.53	\$148,686.69	\$650,316.80	\$514,360.31	\$74,157.51
2002000	FORDYCE SCHOOL DIST.	\$624,990.73	\$372,960.46	\$88,924.89	\$309,045.68	\$182,387.65	\$72,709.17
2104000	DUMAS SCHOOL DIST.	\$1,720,470.62	\$1,289,504.15	\$209,564.67	\$284,222.44	\$542,038.61	-\$161,250.27
2105000	MCGEHEE SCHOOL DIST.	\$2,048,483.43	\$1,073,029.10	\$408,046.97	\$272,264.83	-\$44,889.32	\$184,868.71
2202000	DREW CENTRAL SCHOOL DIST.	\$595,790.20	\$535,598.99	\$3,704.58	\$265,667.02	\$256,992.88	\$3,704.58
2203000	MONTICELLO SCHOOL DIST.	\$2,936,793.74	\$2,782,044.19	\$39,812.02	\$75,472.71	\$746.06	\$36,516.83
2301000	CONWAY SCHOOL DIST.	\$6,054,070.05	\$1,197,908.53	\$361,146.22	-\$1,080,416.16	-\$1,681,514.54	\$280,639.36
2303000	GREENBRIER SCHOOL DIST.	\$2,387,904.67	\$2,183,756.05	\$42,380.29	\$87,904.67	-\$21,461.39	-\$24,493.72

SCHEDULE 4 - FUND BALANCES BY DISTRICT

SCHEDULE 4 - FUND BALANCES BY DISTRICT		2009 Legal Balance (Teacher Salary, Operating, Debt Service Funds)	2009 Ending Unrestricted Fund Balance	2009 Categorical Fund Balance	Increase/ Decrease 2009 Legal Balance	Increase/ Decrease in Ending 2009 Unrestricted Fund Balance	Increase/Decrease 2009 Categorical Fund Balance
DISTRICT LEA	DISTRICT						
2304000	GUY-PERKINS SCHOOL DIST.	\$865,228.96	\$377,753.11	\$49,200.43	-\$752,976.45	-\$159,259.64	-\$9,185.87
2305000	MAYFLOWER SCHOOL DIST.	\$897,593.64	\$532,647.73	\$38,666.32	-\$12,876.38	-\$197,989.63	-\$6,801.41
2306000	MT. VERNON/ENOLA SCHOOL DIST.	\$753,623.51	\$638,092.11	\$17,433.56	\$123,959.15	\$37,367.90	\$10,627.97
2307000	VILONIA SCHOOL DIST.	\$2,302,134.93	\$1,996,988.45	\$33,287.05	\$852,553.95	\$771,659.92	\$1,758.53
2402000	CHARLESTON SCHOOL DIST.	\$1,458,411.66	\$1,327,635.62	\$4,218.32	-\$96,503.70	-\$116,322.51	-\$449.71
2403000	COUNTY LINE SCHOOL DIST.	\$853,796.65	\$821,259.16	\$9,972.87	\$232,338.55	\$215,563.80	-\$914.75
2404000	OZARK SCHOOL DIST.	\$3,821,097.45	\$3,455,802.73	\$120,163.57	\$567,650.81	\$435,374.82	\$108,496.21
2501000	MAMMOTH SPRING SCHOOL DIST.	\$267,339.35	\$134,384.85	\$6,267.44	\$83,954.07	-\$8,201.07	-\$23,244.55
2502000	SALEM SCHOOL DIST.	\$1,479,715.11	\$1,408,762.60	\$60,239.90	\$4,196.59	-\$11,071.99	\$22,468.92
2503000	VIOLA SCHOOL DIST.	\$456,345.65	\$454,391.76	\$1,753.89	\$112,104.18	\$120,775.38	-\$7,912.20
2601000	CUTTER-MORNING STAR SCH. DIST.	\$496,439.11	\$417,739.87	\$57,577.37	-\$334,660.85	-\$366,359.50	\$20,754.35
2602000	FOUNTAIN LAKE SCHOOL DIST.	\$4,385,899.74	\$3,955,957.28	\$81,961.16	\$1,493,974.17	\$1,456,803.52	\$47,795.16
2603000	HOT SPRINGS SCHOOL DIST.	\$5,345,782.82	\$4,184,002.09	\$382,409.61	\$339,670.05	\$670,374.97	-\$496,795.74
2604000	JESSIEVILLE SCHOOL DIST.	\$446,933.07	\$391,217.70	\$20,747.84	\$36,282.57	-\$14,800.71	\$17,380.91
2605000	LAKE HAMILTON SCHOOL DIST.	\$4,848,352.29	\$3,977,864.61	\$323,561.68	-\$1,926,831.13	-\$1,966,689.62	\$20,014.49
2606000	LAKESIDE SCHOOL DIST.	\$2,912,148.94	\$2,910,062.31	\$1,166.19	-\$23,935.69	\$3,091.41	-\$25,409.09
2607000	MOUNTAIN PINE SCHOOL DIST.	\$470,747.17	\$258,299.09	\$50,988.35	-\$21,428.77	-\$50,346.52	-\$33,780.53
2703000	POYEN SCHOOL DIST.	\$1,834,617.62	\$1,810,819.88	\$11,119.24	-\$13,282.14	-\$10,309.45	-\$8,042.43
2705000	SHERIDAN SCHOOL DIST.	\$2,901,974.93	\$2,187,620.91	\$338,930.12	\$537,819.90	\$274,147.09	\$175,545.02
2803000	MARMADUKE SCHOOL DIST.	\$1,970,715.80	\$1,966,677.82	\$4,012.73	-\$863,467.22	-\$864,409.31	\$2,204.52
2807000	GREENE CO. TECH SCHOOL DIST.	\$6,542,015.70	\$6,424,579.38	\$77,650.14	\$1,288,454.19	\$1,368,523.71	-\$61,214.80
2808000	PARAGOULD SCHOOL DIST.	\$2,020,995.35	\$1,000,299.33	\$368,641.21	\$104,321.05	-\$507,495.94	\$231,139.39
2901000	BLEVINS SCHOOL DIST.	\$1,341,917.69	\$117,771.68	\$24,738.78	-\$428,148.89	-\$370,930.24	\$16,155.20
2903000	HOPE SCHOOL DIST.	\$3,410,788.14	\$773,550.13	\$14,236.89	\$240,900.51	\$397,921.99	-\$163,872.17
2906000	SPRING HILL SCHOOL DIST.	\$584,009.72	\$332,058.30	\$60,196.79	\$94,303.15	-\$114,948.17	\$36,333.55
3001000	BISMARCK SCHOOL DIST.	\$1,536,839.93	\$1,400,617.04	\$13,189.24	\$441,415.49	\$410,197.02	-\$35,862.42
3002000	GLEN ROSE SCHOOL DIST.	\$664,652.49	\$527,810.35	\$27,369.40	-\$134,375.54	-\$104,333.62	\$4,140.59
3003000	MAGNET COVE SCHOOL DIST.	\$1,991,580.62	\$1,811,750.90	\$177,158.23	\$594,398.25	\$565,637.40	\$27,305.60
3004000	MALVERN SCHOOL DIST.	\$1,310,567.40	\$1,076,469.99	\$143,910.09	\$441,169.84	\$384,837.03	\$28,833.57
3005000	OUACHITA SCHOOL DIST.	\$275,405.69	\$151,385.92	\$22.45	\$132,330.16	\$50,451.47	-\$12,979.27
3102000	DIERKS SCHOOL DIST.	\$1,022,736.10	\$994,362.20	\$12,741.77	\$144,110.19	\$151,231.37	\$3,531.43
3104000	MINERAL SPRINGS SCHOOL DIST.	\$707,731.95	\$255,483.34	\$24,065.15	\$159,471.46	\$105,989.74	-\$76,981.01
3105000	NASHVILLE SCHOOL DIST.	\$3,673,039.34	\$3,138,990.43	\$145,039.22	-\$275,583.16	-\$452,387.62	\$38,491.51
3201000	BATESVILLE SCHOOL DIST.	\$1,299,499.18	\$434,876.71	\$45,265.09	-\$247,601.92	-\$176,983.39	-\$21,528.85
3203000	CUSHMAN SCHOOL DIST.	\$277,091.20	\$73,789.38	\$866.63	\$103,841.07	-\$35,308.36	-\$186.85
3209000	SOUTHSIDE SCHOOL DIST.	\$866,068.56	\$638,623.00	\$36,898.71	-\$79,599.15	-\$28,019.39	-\$20,138.39

SCHEDULE 4 - FUND BALANCES BY DISTRICT

SCHEDULE 4 - FUND BALANCES BY DISTRICT		2009 Legal Balance (Teacher Salary, Operating, Debt Service Funds)	2009 Ending Unrestricted Fund Balance	2009 Categorical Fund Balance	Increase/ Decrease 2009 Legal Balance	Increase/ Decrease in Ending 2009 Unrestricted Fund Balance	Increase/Decrease 2009 Categorical Fund Balance
DISTRICT LEA	DISTRICT						
3211000	MIDLAND SCHOOL DIST.	\$2,509,500.24	\$2,098,206.04	\$43,625.35	\$351,189.21	\$300,004.43	\$16,707.47
3212000	CEDAR RIDGE SCHOOL DIST.	\$5,080,096.68	\$4,820,872.71	\$36,373.63	\$485,539.44	\$470,336.92	\$15,911.71
3301000	CALICO ROCK SCHOOL DIST.	\$979,306.81	\$877,555.78	\$41,341.21	\$314,364.26	\$257,540.06	\$10,598.71
3302000	MELBOURNE SCHOOL DIST.	\$1,711,036.07	\$1,073,103.75	\$52,404.27	\$33,339.75	-\$4,805.50	\$32,230.82
3306000	IZARD CO. CONS. SCHOOL DIST.	\$788,892.75	\$772,762.41	\$16,129.96	\$250,777.84	\$280,172.46	-\$14,726.00
3403000	NEWPORT SCHOOL DIST.	\$2,828,273.73	\$2,281,160.05	\$116,190.27	-\$143,030.93	-\$103,822.00	-\$219,597.09
3405000	JACKSON CO. SCHOOL DIST.	\$2,089,531.27	\$1,859,506.88	\$59,825.61	-\$72,745.10	-\$15,019.05	\$18,092.82
3502000	DOLLARWAY SCHOOL DIST.	\$5,903,972.96	\$3,450,963.92	\$1,698,368.60	\$584,663.86	\$138,819.03	\$121,960.91
3505000	PINE BLUFF SCHOOL DIST.	\$13,035,112.43	\$9,198,826.69	\$607,493.06	\$785,724.22	\$2,251,747.69	-\$911,655.46
3509000	WATSON CHAPEL SCHOOL DIST.	\$5,043,606.87	\$4,696,696.52	\$0.00	-\$580,188.39	-\$927,098.74	\$0.00
3510000	WHITE HALL SCHOOL DIST.	\$2,902,324.05	\$2,636,223.67	\$150,772.90	\$46,636.10	\$153,657.48	\$19,866.45
3601000	CLARKSVILLE SCHOOL DIST.	\$4,260,371.46	\$3,698,594.38	\$56,269.20	\$221,430.56	\$178,685.21	\$3,164.84
3604000	LAMAR SCHOOL DIST.	\$1,965,404.51	\$1,615,682.34	\$40,236.36	-\$125,252.00	-\$64,244.15	-\$48,648.20
3606000	WESTSIDE SCHOOL DIST.	\$1,594,547.87	\$1,511,661.23	\$43,038.76	\$9,341.98	-\$13,594.31	-\$16,193.08
3701000	BRADLEY SCHOOL DIST.	\$2,828,049.67	\$2,383,150.40	\$135,510.83	\$461,484.28	\$367,320.59	\$196.68
3704000	LAFAYETTE COUNTY SCHOOL DIST	\$2,215,322.26	\$1,794,702.73	\$363,242.80	\$454,915.46	\$513,917.33	-\$5,139.56
3804000	HOXIE SCHOOL DIST.	\$4,668,361.79	\$3,968,016.34	\$137,879.70	\$919,327.33	\$856,619.78	\$67,323.81
3806000	SLOAN-HENDRIX SCHOOL DIST.	\$2,455,158.75	\$1,991,184.56	\$232,990.71	-\$349,221.87	-\$376,532.32	-\$71,264.68
3809000	HILLCREST SCHOOL DIST.	\$1,634,078.44	\$1,529,558.62	\$36,508.32	-\$294,117.55	-\$333,452.64	\$11,765.50
3610000	LAWRENCE COUNTY SCHOOL DIST	\$5,333,181.32	\$5,216,919.81	\$12,528.17	-\$57,354.92	-\$2,285.90	-\$46,069.32
3904000	LEE COUNTY SCHOOL DIST.	\$2,974,234.75	\$2,426,593.81	\$240,531.19	-\$402,864.70	-\$143,970.87	-\$295,537.72
4003000	STAR CITY SCHOOL DIST.	\$6,741,492.96	\$6,251,852.96	\$56,248.31	\$81,855.17	-\$20,952.29	-\$28,235.60
4101000	ASHDOWN SCHOOL DIST.	\$4,422,888.54	\$3,909,973.12	\$71,152.15	-\$35,431.47	\$1,120,893.28	-\$54,694.44
4102000	FOREMAN SCHOOL DIST.	\$533,255.93	\$533,214.70	\$0.00	-\$442,180.62	-\$15,126.59	\$0.00
4201000	BOONEVILLE SCHOOL DIST.	\$2,616,168.81	\$2,250,853.58	\$144,601.35	-\$699,754.13	-\$656,486.28	-\$154,374.89
4202000	MAGAZINE SCHOOL DIST.	\$522,965.62	\$426,882.86	\$87,465.62	\$86,809.99	\$4,185.55	\$86,309.99
4203000	PARIS SCHOOL DIST.	\$1,102,632.19	\$991,728.58	\$84,871.09	-\$260,536.08	-\$261,089.52	-\$5,964.39
4204000	SCRANTON SCHOOL DIST.	\$570,934.91	\$560,239.06	\$8,189.85	-\$119,384.67	-\$120,251.16	-\$1,184.99
4301000	LONOKE SCHOOL DIST.	\$585,125.32	\$525,379.90	\$35,125.32	\$21,481.54	\$65,428.85	\$21,481.54
4302000	ENGLAND SCHOOL DIST.	\$940,396.10	\$679,087.25	\$74,800.24	\$135,024.32	-\$46,697.36	\$61,370.13
4303000	CARLISLE SCHOOL DIST.	\$3,372,753.82	\$2,852,059.83	\$82,211.66	\$349,207.45	\$241,785.10	-\$35,691.89
4304000	CABOT SCHOOL DIST.	\$4,949,177.18	\$4,824,614.68	\$59,282.53	\$325,642.52	\$306,710.33	-\$30,385.04
4401000	HUNTSVILLE SCHOOL DIST.	\$1,548,763.90	\$866,488.05	\$198,045.79	\$175,934.67	\$492,561.14	\$4,411.72
4501000	FLIPPIN SCHOOL DIST.	\$759,154.33	\$545,367.28	\$0.00	-\$205,274.20	-\$263,287.11	\$0.00
4502000	YELLVILLE-SUMMIT SCHOOL DIST.	\$530,218.70	\$438,508.34	\$7,505.58	-\$484,444.77	-\$490,769.27	\$4,496.44
4602000	GENOA CENTRAL SCHOOL DIST.	\$1,076,795.13	\$1,027,623.58	\$19,223.38	-\$178,442.24	-\$107,376.62	-\$18,209.91

SCHEDULE 4 - FUND BALANCES BY DISTRICT

SCHEDULE 4 - FUND BALANCES BY DISTRICT		2009 Legal Balance (Teacher Salary, Operating, Debt Service Funds)	2009 Ending Unrestricted Fund Balance	2009 Categorical Fund Balance	Increase/ Decrease 2009 Legal Balance	Increase/ Decrease in Ending 2009 Unrestricted Fund Balance	Increase/Decrease 2009 Categorical Fund Balance
DISTRICT LEA	DISTRICT						
4603000	FOUKE SCHOOL DIST.	\$2,035,213.34	\$1,733,179.77	\$90,650.01	-\$320,105.50	-\$131,606.41	\$940.35
4605000	TEXARKANA SCHOOL DIST.	\$9,421,327.23	\$7,001,132.78	\$620,609.58	\$2,823,565.18	\$2,125,373.40	\$375,092.25
4701000	ARMOREL SCHOOL DIST.	\$377,782.76	\$189,434.66	\$16,176.31	-\$750,856.70	-\$725,403.67	\$6,171.64
4702000	BLYTHEVILLE SCHOOL DIST.	\$5,213,353.71	\$3,268,713.86	\$808,261.00	\$200,343.15	-\$434,979.76	-\$410,514.47
4706000	SO. MISS. COUNTY SCHOOL DIST.	\$1,741,047.37	\$1,438,101.35	\$178,296.75	\$351,647.74	\$238,932.99	-\$11,934.52
4708000	GOSNELL SCHOOL DIST.	\$4,765,486.95	\$595,517.45	\$60,965.46	\$106,813.46	-\$3,942,485.24	-\$59,697.08
4712000	MANILA SCHOOL DIST.	\$3,793,903.40	\$3,764,760.50	\$22,642.58	\$274,690.65	\$272,223.67	-\$4,033.34
4713000	OSCEOLA SCHOOL DIST.	\$2,446,939.27	\$944,426.60	\$1,210,761.20	-\$450,006.84	\$359,317.05	-\$974,644.86
4801000	BRINKLEY SCHOOL DIST.	\$978,983.48	\$498,320.80	\$219,184.84	-\$93,265.04	-\$210,586.50	\$180,266.83
4802000	CLARENDON SCHOOL DIST.	\$1,820,107.36	\$1,530,471.78	\$109,836.62	-\$44,063.22	-\$5,573.60	\$841.32
4901000	CADDO HILLS SCHOOL DIST.	\$1,165,614.09	\$1,070,909.26	\$41,262.69	-\$42,517.36	-\$2,039.06	-\$5,553.19
4902000	MOUNT IDA SCHOOL DIST.	\$1,625,165.72	\$1,556,850.93	\$293.00	\$24,750.61	-\$3,828.22	\$0.00
5006000	PRESCOTT SCHOOL DIST.	\$1,165,161.00	\$1,026,019.24	\$136,974.07	\$151,610.57	\$45,481.01	\$107,577.97
5008000	NEVADA SCHOOL DIST.	\$327,685.88	\$179,078.86	\$14,760.15	\$176,960.83	\$34,723.24	\$8,415.72
5102000	JASPER SCHOOL DIST.	\$1,899,976.28	\$1,427,625.35	\$11,340.06	-\$901,759.66	-\$1,516,208.22	-\$12,631.76
5106000	DEER/MT. JUDEA SCHOOL DIST.	\$1,662,112.25	\$1,204,484.41	\$42,853.63	\$272,292.26	\$349,638.08	-\$71,175.93
5201000	BEARDEN SCHOOL DIST.	\$1,224,208.89	\$1,089,521.71	\$93,597.24	\$569,120.43	\$443,626.23	\$60,503.89
5204000	CAMDEN FAIRVIEW SCHOOL DIST.	\$3,844,274.58	\$3,390,250.53	\$123,550.50	\$239,310.14	\$190,633.64	\$13,414.12
5205000	HARMONY GROVE SCHOOL DIST.	\$1,356,532.88	\$561,196.15	\$51,002.76	-\$412,531.66	-\$600,506.92	-\$92.46
5206000	STEPHENS SCHOOL DIST.	\$1,319,992.38	\$1,060,932.29	\$115,676.22	-\$201,383.72	-\$175,594.78	\$20,769.46
5301000	EAST END SCHOOL DIST.	\$1,028,737.09	\$909,878.23	\$34,200.75	\$63,857.11	\$87,803.09	-\$34,226.53
5303000	PERRYVILLE SCHOOL DIST.	\$2,246,096.96	\$1,833,661.24	\$68,437.86	\$123,561.48	\$101,424.27	-\$2,259.96
5401000	BARTON-LEXA SCHOOL DIST.	\$3,834,404.25	\$3,469,403.09	\$182,447.42	-\$13,066.56	-\$151,939.67	\$48,572.86
5403000	HELENA/ W.HELENA SCHOOL DIST.	\$4,657,449.69	\$2,841,637.47	\$1,466,495.18	-\$1,312,582.93	-\$1,534,096.00	\$143,545.72
5404000	MARVELL SCHOOL DIST.	\$4,116,932.87	\$3,255,195.89	\$90,314.29	-\$196,481.08	-\$214,348.92	-\$430,669.42
5501000	DELIGHT SCHOOL DIST.	\$525,677.81	\$142.15	\$26,123.95	-\$132,662.27	-\$261,604.74	-\$115,980.36
5502000	CENTERPOINT SCHOOL DIST.	\$1,646,286.01	\$1,143,928.52	\$63,853.44	\$13,274.53	-\$20,401.29	-\$41,929.94
5503000	KIRBY SCHOOL DIST.	\$413,711.44	\$356,582.82	\$25,320.96	\$48,487.01	\$1,322.65	\$18,490.88
5504000	MURFREESBORO SCHOOL DIST.	\$194,353.27	\$147,933.23	\$19,448.09	\$171,238.15	\$148,054.45	-\$3.60
5602000	HARRISBURG SCHOOL DIST.	\$1,062,673.11	\$990,771.95	\$70,521.45	\$81,298.64	\$40,196.34	\$43,877.54
5604000	MARKED TREE SCHOOL DIST.	\$746,127.20	\$639,455.80	\$65,288.43	\$350,486.97	\$302,925.14	\$31,559.60
5605000	TRUMANN SCHOOL DIST.	\$1,518,763.75	\$1,448,308.59	\$28,697.36	-\$2,987,985.65	-\$3,037,737.64	\$12,044.14
5607000	WEINER SCHOOL DIST.	\$911,678.27	\$536,102.33	\$10,278.08	\$65,082.35	\$28,285.51	\$4,375.28
5608000	EAST POINSETT CO. SCHOOL DIST.	\$2,875,622.43	\$2,777,791.91	\$10,087.10	\$403,584.31	\$384,724.44	-\$60,555.09
5703000	MENA SCHOOL DIST.	\$7,347,723.12	\$7,208,161.10	\$19,845.52	\$5,659,146.85	\$6,020,475.91	-\$4,772.23
5704000	VAN COVE SCHOOL DIST.	\$813,151.31	\$627,804.02	\$8,230.99	-\$200,263.59	-\$331,664.25	-\$10,844.23

SCHEDULE 4 - FUND BALANCES BY DISTRICT

SCHEDULE 4 - FUND BALANCES BY DISTRICT		2009 Legal Balance (Teacher Salary, Operating, Debt Service Funds)	2009 Ending Unrestricted Fund Balance	2009 Categorical Fund Balance	Increase/ Decrease 2009 Legal Balance	Increase/ Decrease in Ending 2009 Unrestricted Fund Balance	Increase/Decrease 2009 Categorical Fund Balance
DISTRICT LEA	DISTRICT						
5705000	WICKES SCHOOL DIST.	\$650,013.31	\$140,576.80	\$150,888.70	-\$406,481.35	-\$406,992.29	-\$119,735.61
5706000	OUACHITA RIVER SCHOOL DIST.	\$1,466,896.52	\$1,170,377.87	\$24,020.93	\$245,283.79	\$143,532.26	-\$1,204.73
5801000	ATKINS SCHOOL DIST.	\$2,106,921.35	\$1,968,732.00	\$53,683.94	\$488,305.70	\$478,031.96	-\$10,780.34
5802000	DOVER SCHOOL DIST.	\$1,125,642.15	\$995,642.63	\$55,306.16	\$485,078.55	\$468,625.61	\$5,008.63
5803000	HECTOR SCHOOL DIST.	\$1,109,253.72	\$1,066,802.07	\$32,349.89	-\$236,224.35	-\$216,147.05	\$15,806.56
5804000	POTTSVILLE SCHOOL DIST.	\$2,332,794.08	\$2,283,476.39	\$24,242.24	\$167,768.26	\$148,436.35	-\$444.72
5805000	RUSSELLVILLE SCHOOL DIST.	\$7,403,588.54	\$7,386,144.79	\$0.49	\$843,184.89	\$910,046.87	-\$52,021.70
5901000	DES ARC SCHOOL DIST.	\$2,489,928.20	\$2,159,022.74	\$82,403.70	-\$274,463.65	-\$326,288.51	\$17,352.59
5903000	HAZEN SCHOOL DIST.	\$3,300,085.10	\$3,101,717.56	\$52,528.77	\$250,803.67	\$169,303.29	\$25,982.07
6001000	LITTLE ROCK SCHOOL DIST.	\$17,950,076.28	\$12,473,023.53	\$0.00	\$5,030,820.31	-\$446,232.44	\$0.00
6002000	N. LITTLE ROCK SCHOOL DIST.	\$4,873,413.26	\$1,825,844.86	\$872,112.01	-\$9,352,653.49	\$8,136,587.78	\$492,241.64
6003000	PULASKI CO. SPEC. SCHOOL DIST.	\$8,977,750.74	\$5,091,961.17	\$642,668.84	\$301,965.38	-\$287,070.93	\$249,303.18
6102000	MAYNARD SCHOOL DIST.	\$522,217.66	\$267,525.19	\$78,620.22	-\$28,343.34	-\$172,154.43	\$35,726.83
6103000	POCAHONTAS SCHOOL DIST.	\$3,368,985.19	\$2,952,544.96	\$117,205.27	\$273,276.89	\$92,888.09	\$3,742.91
6201000	FORREST CITY SCHOOL DIST.	\$1,915,082.81	\$848,290.74	\$395,081.11	-\$1,215,697.38	-\$1,414,946.79	-\$34,858.29
6202000	HUGHES SCHOOL DIST.	\$1,888,696.90	\$1,598,103.18	\$121,879.22	\$159,752.31	\$413,205.00	-\$191,451.30
6205000	PALESTINE-WHEATLEY SCH. DIST.	\$2,890,353.63	\$2,214,481.49	\$278,546.53	\$367,896.52	-\$138,282.33	\$216,278.30
6301000	BAUXITE SCHOOL DIST.	\$1,432,607.96	\$1,082,349.45	\$34,485.55	-\$569,573.28	-\$747,779.51	\$4,179.79
6302000	BENTON SCHOOL DIST.	\$2,872,658.72	\$2,741,315.58	\$45,533.05	\$20,102.01	-\$8,412.72	-\$28,089.32
6303000	BRYANT SCHOOL DIST.	\$4,218,943.50	\$3,484,496.78	\$109,787.38	\$102,511.31	-\$134,677.68	-\$63,900.70
6304000	HARMONY GROVE SCHOOL DIST.	\$1,115,098.11	\$525,416.64	\$48,161.15	\$162,723.07	\$26,643.92	\$38,180.05
6401000	WALDRON SCHOOL DIST.	\$2,941,003.55	\$2,826,979.24	\$17,975.61	\$122,622.40	\$75,755.96	-\$23,378.63
6502000	SEARCY COUNTY SCHOOL DIST.	\$1,554,192.05	\$1,172,204.09	\$267,301.71	\$219,076.50	\$393,042.25	-\$188,254.17
6505000	OZARK MOUNTAIN SCHOOL DIST.	\$1,245,073.05	\$760,210.86	\$48,530.09	-\$583,518.04	-\$523,990.73	-\$115,499.33
6601000	FORT SMITH SCHOOL DIST.	\$20,003,226.27	\$9,373,983.24	\$797,286.73	\$1,959,688.01	\$1,194,033.68	\$378,091.37
6602000	GREENWOOD SCHOOL DIST.	\$2,119,037.06	\$1,767,418.30	\$24,059.04	\$119,165.88	-\$68,014.69	\$9,479.55
6603000	HACKETT SCHOOL DIST.	\$1,149,033.70	\$1,109,491.44	\$1,611.38	-\$1,956.56	-\$12,075.26	-\$1,956.94
6604000	HARTFORD SCHOOL DIST.	\$346,318.59	\$336,759.35	\$4,957.69	-\$1,418.56	\$46,876.10	-\$5,147.01
6605000	LAVACA SCHOOL DIST.	\$1,126,384.25	\$1,017,631.85	\$19,992.17	\$112,721.40	\$65,649.46	\$11,091.66
6606000	MANSFIELD SCHOOL DIST.	\$496,180.15	\$374,341.90	\$53,766.97	\$126,359.92	\$87,390.61	\$23,469.03
6701000	DEQUEEN SCHOOL DIST.	\$8,983,422.11	\$7,969,107.76	\$540,103.89	\$168,861.16	-\$348,496.98	\$360,507.39
6703000	HORATIO SCHOOL DIST.	\$908,309.91	\$644,779.81	\$68,028.58	\$299,273.19	\$886,735.85	\$19,256.14
6802000	CAVE CITY SCHOOL DIST.	\$1,874,110.80	\$1,607,305.39	\$71,048.69	\$59,338.85	\$33,700.23	\$34,823.34
6804000	HIGHLAND SCHOOL DIST.	\$4,376,017.66	\$4,213,594.68	\$45,613.81	\$519,801.98	\$451,748.81	\$25,185.21
6806000	TWIN RIVERS SCHOOL DIST.	\$1,241,048.43	\$491,433.50	\$246,356.21	-\$82,190.57	-\$392,318.99	-\$169,327.36
6901000	MOUNTAIN VIEW SCHOOL DIST.	\$4,792,420.48	\$4,262,968.95	\$81,029.85	\$301,539.33	\$244,538.88	\$16,308.72

SCHEDULE 4 - FUND BALANCES BY DISTRICT

SCHEDULE 4 - FUND BALANCES BY DISTRICT		2009 Legal Balance (Teacher Salary, Operating, Debt Service Funds)	2009 Ending Unrestricted Fund Balance	2009 Categorical Fund Balance	Increase/ Decrease 2009 Legal Balance	Increase/ Decrease in Ending 2009 Unrestricted Fund Balance	Increase/Decrease 2009 Categorical Fund Balance
DISTRICT LEA	DISTRICT						
7001000	EL DORADO SCHOOL DIST.	\$4,484,752.74	\$4,325,868.78	\$30,999.45	\$285,885.81	\$711,811.84	\$133.53
7003000	JUNCTION CITY SCHOOL DIST.	\$1,645,572.74	\$1,378,794.97	\$4,289.97	\$407,000.05	\$267,961.90	-\$19,325.15
7006000	NORPHLET SCHOOL DIST.	\$1,154,265.93	\$943,761.90	\$12,751.07	\$242,269.41	\$148,742.56	-\$9,003.56
7007000	PARKERS CHAPEL SCHOOL DIST.	\$1,692,151.67	\$1,235,242.90	\$794.15	\$87,063.58	-\$113,033.38	-\$205.85
7008000	SMACKOVER SCHOOL DIST.	\$1,963,653.72	\$1,471,260.61	\$6,972.61	\$288,832.58	\$235,610.77	-\$33,910.22
7009000	STRONG-HUTTIG SCHOOL DIST.	\$988,893.04	\$796,349.23	\$38,614.27	-\$67,973.98	\$252,223.19	-\$19,001.11
7102000	CLINTON SCHOOL DIST.	\$2,614,160.62	\$2,510,929.32	\$70,761.90	\$1,929,935.05	\$1,944,853.94	-\$29,473.10
7104000	SHIRLEY SCHOOL DIST.	\$1,477,553.93	\$1,329,118.33	\$94,896.38	-\$636,176.89	-\$725,134.37	\$41,239.12
7105000	SOUTH SIDE SCHOOL DIST.	\$1,950,773.84	\$1,866,028.63	\$13,203.88	\$499,866.44	\$544,046.57	-\$20,056.88
7201000	ELKINS SCHOOL DIST.	\$412,664.47	\$279,712.29	\$14,350.68	\$32,907.49	-\$60,093.24	\$5,191.52
7202000	FARMINGTON SCHOOL DIST.	\$907,071.44	\$737,075.32	\$44,086.04	\$594,183.92	\$576,082.88	\$17,429.05
7203000	FAYETTEVILLE SCHOOL DIST.	\$5,426,050.98	\$5,172,248.90	\$238,131.88	-\$4,015,469.00	-\$4,187,384.73	\$173,578.62
7204000	GREENLAND SCHOOL DIST.	\$1,155,707.64	\$834,049.05	\$43,905.10	\$747,578.17	\$667,031.90	-\$8,107.96
7205000	LINCOLN SCHOOL DIST.	\$2,651,299.16	\$1,231,524.79	\$111,127.27	\$695,129.99	-\$28,487.79	\$8,106.66
7206000	PRAIRIE GROVE SCHOOL DIST.	\$1,616,623.27	\$1,177,410.98	\$55,591.82	-\$335,447.87	-\$427,124.03	\$792.42
7207000	SPRINGDALE SCHOOL DIST.	\$10,821,399.06	\$10,350,251.10	\$471,147.96	\$2,300,820.55	\$2,505,144.90	-\$204,324.35
7208000	WEST FORK SCHOOL DIST.	\$999,626.78	\$927,957.02	\$16,932.81	\$136,151.05	\$156,632.55	\$5,712.99
7301000	BALD KNOB SCHOOL DIST.	\$2,995,545.98	\$2,728,158.46	\$194,861.19	\$1,443,873.89	\$1,327,606.83	\$77,664.41
7302000	BEEBE SCHOOL DIST.	\$2,940,541.53	\$2,712,034.43	\$102,127.30	-\$137,125.61	-\$205,920.46	\$45,237.27
7303000	BRADFORD SCHOOL DIST.	\$1,006,043.66	\$823,091.30	\$35,997.90	\$36,939.03	\$42,754.10	\$4,442.80
7304000	WHITE CO. CENTRAL SCHOOL DIST.	\$1,111,007.21	\$1,081,841.86	\$20,351.61	-\$7,192.17	-\$28,362.62	\$14,236.78
7307000	RIVERVIEW SCHOOL DIST.	\$7,141,659.07	\$7,017,013.04	\$30,324.02	\$74,575.58	\$51,164.91	-\$9,917.97
7309000	PANGBURN SCHOOL DIST.	\$1,090,407.95	\$862,476.34	\$23,729.84	\$1,596.07	-\$118,746.24	-\$27,740.48
7310000	ROSE BUD SCHOOL DIST.	\$1,918,560.32	\$1,759,544.90	\$37,226.32	\$440,234.21	\$360,602.47	-\$15,749.60
7311000	SEARCY SCHOOL DIST.	\$9,030,748.66	\$8,253,473.45	\$392,294.83	-\$437,037.49	-\$739,566.60	-\$17,283.77
7401000	AUGUSTA SCHOOL DIST.	\$687,219.64	\$609,907.22	\$44,933.58	\$213,068.29	\$198,954.73	\$13,937.50
7403000	MCCRORY SCHOOL DIST.	\$1,978,464.90	\$1,730,442.54	\$215,520.05	-\$378,927.58	-\$410,911.17	\$24,099.80
7503000	DANVILLE SCHOOL DIST.	\$980,448.41	\$677,546.27	\$100,492.74	\$206,723.62	\$211,644.12	\$52,046.47
7504000	DARDANELLE SCHOOL DIST.	\$5,476,850.57	\$5,242,842.24	\$17,234.15	\$116,298.65	-\$19,007.32	-\$27,408.34
7509000	WESTERN YELL CO. SCHOOL DIST.	\$1,565,065.26	\$1,408,263.74	\$85,051.39	-\$132,368.89	-\$207,889.97	\$57,199.29
7510000	TWO RIVERS SCHOOL DIST.	\$2,010,916.63	\$1,340,561.78	\$350,683.62	\$56,125.08	-\$163,726.24	\$59,639.99
	TOTALS	\$638,338,723.19	\$511,697,710.27	\$32,463,657.04	\$24,857,529.68	\$21,215,181.94	-\$2,317,702.61

EXPENDITURE FUNCTION DESCRIPTIONS

INSTRUCTION: Major components include Regular Programs/Elementary - Secondary, Special Education, Workforce Education, Adult/Continuing Education, Compensatory Education, and Other Instructional Programs. Preschool Instruction and Adult/Continuing Education expenditures have been excluded from Instruction for purposes of this report. Athletic costs are included as a part of Regular Programs/Elementary - Secondary.

PUPIL SUPPORT SERVICES: Activities for student well-being and to support instruction including attendance and social work, guidance services, health services, psychological services, speech and audiology services.

INSTRUCTIONAL STAFF SUPPORT SERVICES: Activities aimed at the improvement of the content and process of instruction including curriculum development and improvement, professional development, library and media services, instructional technology services and academic assessment services.

GENERAL ADMINISTRATION SERVICES: District-wide policy, planning and oversight services including the Board of Education and Superintendent.

SCHOOL ADMINISTRATION SERVICES: School-level administrative services including the Principal and Assistant Principal.

CENTRAL SERVICES: Services such as Fiscal, Personnel, Purchasing, Printing, Public Information and Administrative Technology.

OPERATION AND MAINTENANCE OF PLANT SERVICES: Services to keep the plant and equipment (other than student transportation) operating properly and safely. Services include insurance, custodial, repair, safety and security.

STUDENT TRANSPORTATION SERVICES: Services for pupil transportation including bus purchases, vehicle operation costs and monitoring.

FOOD SERVICE OPERATIONS: Employee and contractual services for the delivery, preparation and serving of food to students.

OTHER NON-INSTRUCTIONAL SERVICES: Includes activities such as enterprise and community service operations.