

**State Revenue Offices
Joint Performance Review Committee**

EXHIBIT D

July 30, 2015

1. What is the employee turnover rate at the Revenue offices?

The turnover rate from July 1, 2014 thru June 30, 2015 was 15% in State Revenue Offices.

2. What kind of training is provided to the employees?

State Revenue Office employees are receiving on the job training. Depending on the location the employee will generally observe a co-worker for a few days and review procedures manuals prior to processing any transactions. The employee will also view computer based training on basic navigation of the driver services/motor vehicle system.

In a larger office a new employee will typically process motor vehicle renewals before moving to more complex transactions. In a smaller office the new employee may be exposed to multiple transactions just simply because of the lower volume of customers. Depending on the skills of the employee they should be processing transactions with minimal assistance within the first six weeks of employment. All new employees are on six month probation. Employee progress is reviewed monthly with the employee.

All employees have access to a message board where we provide updated information as needed.

State Revenue Offices are divided into five districts where the district managers will provide additional training using the train the trainer method on policy, legislative material or system changes.

3. What types of transactions are done at the Revenue offices?

The mission of the Office of State Revenue Administration is to collect revenue through effective collection and administration of taxes, driver's license fees and motor vehicle fees according to Arkansas State law.

We process basic renewal transactions on motor vehicles, trailers, motorcycles, boats and large instate commercial and non-commercial trucks.

We process title transactions and collect Arkansas sales/use tax when a customer purchases a motor vehicle, trailer, motorcycles, ATV or truck. This also includes filing of liens on motor vehicles, trailers, motorcycles, ATV and trucks. Customers also have the ability to obtain duplicate titles, duplicate registrations and make address changes.

We issue Arkansas identification cards, non-commercial driver licenses, commercial driver licenses, commercial driver license test packets, commercial learner's permits, persons with disability cards and state employee identification cards. A customer may obtain a traffic violation report and we also collect reinstatement fees on Arkansas driver licenses.

Arkansas residents may also purchase deed stamps for the transfer of real estate.

**State Revenue Offices
Joint Performance Review Committee**

July 30, 2015

The Office of Motor Vehicle has approximately 400 inventory plate types. This includes dealers, military, college, special interest, plates that can be personalized, public, etc. State Revenue Office employees must have the knowledge of appropriate fees and special requirements to obtain the various plate types.

The Office of Driver Services issues 10 variations of driver licenses, including identification cards and state employee identification cards.

4. What is the average number of transactions each employee performs and the time it takes to perform the transactions?

State Revenue Offices employees processed 4,143,130 transactions last year and collected \$531, 240,344.85 in revenue July 1, 2014 thru June 30, 2015.

The average number of transactions varies from location and transaction type. An employee working a motor vehicle express basic renewal line can process 150 transactions per day. We have some locations which also operate a driver license renewal express line; those employees can process up to 100 transactions per day. An employee processing a title and registration and payment of sales tax may only process 25 transactions per day.

The majority of our employees process various types of transactions; we would like to see an employee process an average of 40 transactions per day.

Some of our customers require more assistance than others; the employee may be required to contact the auto dealership, insurance company, county assessor and collector before they are able to start the application entry into our system.

Below is the average time to actually enter the transaction into our system after all documentation has been reviewed.

Driver License Renewal	7 minutes
New Driver or New Resident Driver License	10 minutes
Duplicate Driver License	7 minutes
Payment of Reinstatement Fees	5 minutes
Commercial Driver Test Packets	10 minutes
Motor Vehicle Renewal	2-4 minutes
Title, Registration and Sales Tax	10-15 minutes
Title, Transfer and Sales Tax	10-15 minutes

FINANCE AND ADMINISTRATION--REVENUE SERVICES (630)
FISCAL YEAR 2016
As Enacted by Act 924 of 2015

I) AGENCY SUMMARY & REVENUE SOURCES

MISSION

The Revenue Division is responsible for administration and enforcement of State taxing laws, vehicle and driver licenses imposed under Arkansas law and Child Support Enforcement imposed under Arkansas and Federal law. Offices within the Division and their responsibilities are the Office of the Assistant Commissioner for Policy and Legal which includes the Hearings and Appeals Section; the Office of Income Tax administers Individual and Corporate Income Taxes AND Income Tax Systems, which processes income tax returns; the Office of Field Audit; Office of Motor Vehicle administers licensing, registration and titling of vehicles; Office of Excise Tax Administration is responsible for Sales Tax, Motor Fuel Tax, Miscellaneous Tax, Tax Credits and tax administration of Bingo and Raffles; Office of Driver Services which includes, Issuance, Technical Services, Safety Responsibility, Driver Control and Commercial Driver Licenses; Office of Assistant Commissioner for Operations and Administration which consists of the Cashier Section (which prepares deposits of all monies for deposit with the State Treasurer) and General Services sections; Office of Revenue Legal Counsel which represents the Division in litigation involving taxes, fees, licenses and programs administered by the Division; and the Office of State Revenue Office Administration administers the County automobile registration and renewal offices.

TOTAL APPROPRIATION

The total appropriation for the Revenue Division is \$1,273,481,673 for FY2016.

FUNDING SOURCES

This agency's appropriations are funded with tax refunds, State Central Services Fund, and special revenues.

II) CHANGE LEVEL REQUESTS

Commercial Drivers License Program

This appropriation provides for the operating expenses of this program. Fees collected for licenses issued are dedicated as special revenue to support the program. The change level request is \$1,000,000 in Operating Expenses for costs associated with the Arkansas Integrated Revenue System Driver Services.

Operations Appropriation

This appropriation is for the operation of the Revenue Services Division. The change level request is \$2,315,135 in FY2016 for Regular Salaries and Personal Services Matching to support 20 additional positions, Operating Expenses to cover postage, rent increase, and other operating related expenses. The change level request also allows for the replacement of aging and high mileage vehicles in the Capital Outlay line item.

III) ADDITIONAL POSITIONS (Total FY2015 Authorized Positions: 1,480)

Total Authorized Positions FY2016: 1,501

Total Base Level Positions: 1,480

Increase / (Decrease) Over Base Level: 21

Extra Help Positions FY2016: 221 (Total FY2015 Authorized Extra Help: 221)

IV) SPECIAL LANGUAGE

APPROPRIATION TRANSFERS: Dictates distribution of refunds in Tax Administration Program and allows transfer between Refund line items with report to Legislative Council on amounts and reasons for transfer.

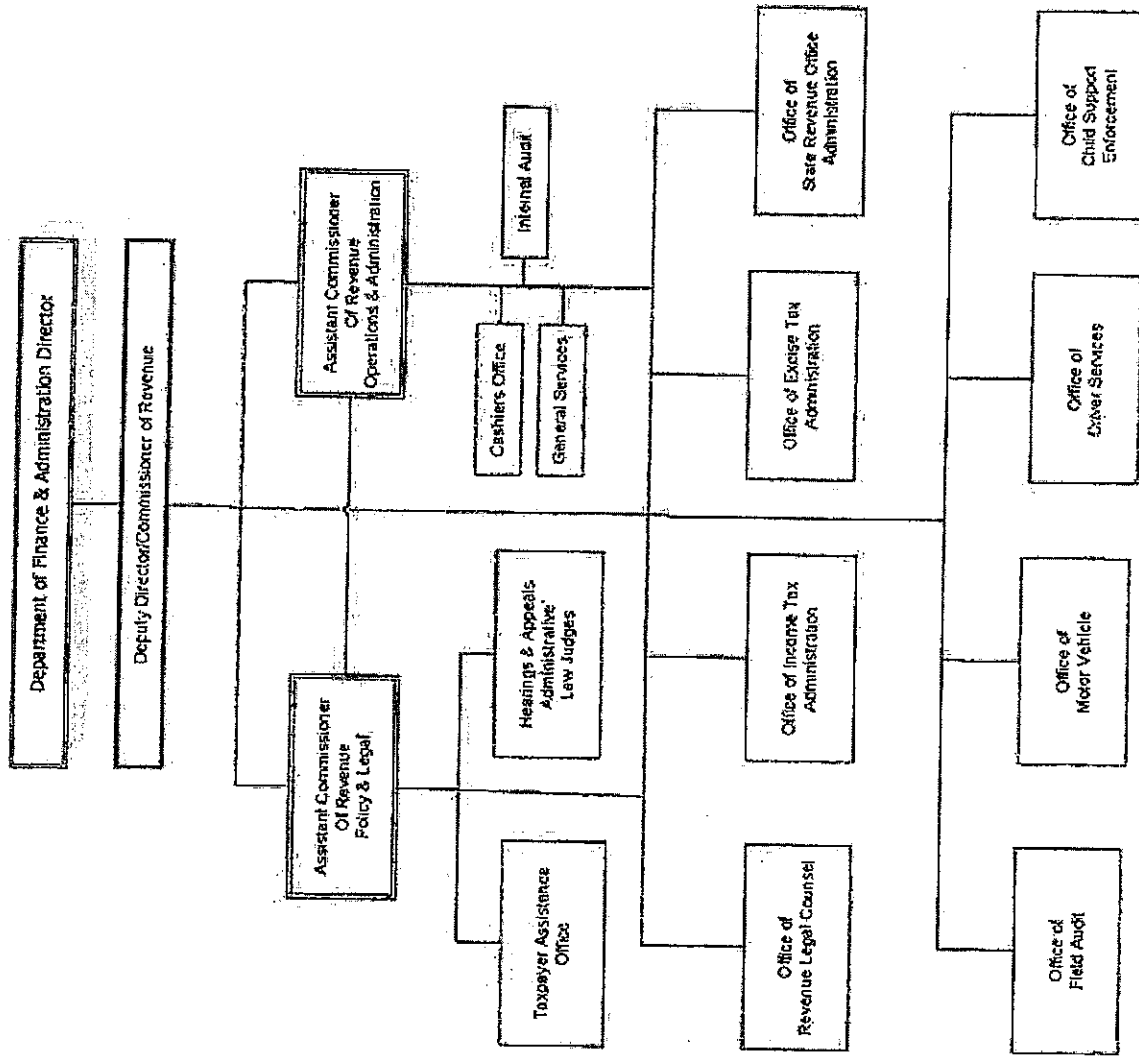
EXTRA HELP EXEMPTION: States extra Help positions are exempt from limitation of hours with report to Legislative Council when temporary or part-time employees are employed by DFA for longer than 7 months.

AUTHORITY TO EMPLOY CERTIFIED LAW ENFORCEMENT OFFICERS: Gives Department authority to employ not more than one (1) certified law enforcement officer to provide security for Department buildings, grounds, property, employees and customers.

CONTINGENT POSITIONS: Authorizes the establishment of 50 contingency data entry positions to be utilized as deemed necessary by the Director of DFA after seeking prior review by Legislative Council/Joint Budget; allows transfers from the various programs in the Act to the Tax Administration Program for salaries and matching.

COMMERCIAL DRIVER LICENSE FUND: Language governs excess funds of the Commercial Driver License Fund over an amount equal to three most recent fiscal year budgets be transferred into the State Central Services Fund.

April 2015



Office Name	Number of employees	DFA Local Revenue Office Manager C118	DFA Local Revenue Office Supervisor C114	DFA Supervisor C113	DFA Service Representative C111
Arkadelphia	4		1		3
Ash Flat	2		1		1
Ashdown	2		1		1
Atkins Outreach*					
Augusta	2		1		1
Bald Knob	3		1		2
Batesville	5	1			4
Beebe	3		1		2
Benton	7	1		1	5
Bentonville	16	1			14
Berryville	3		1		2
Blytheville	4	1		1	2
Booneville	2		1		1
Brinkley	1		1		
Bryant	5		1		4
Cabot	6		1	1	4
Camden	5		1	1	3
Cave City Outreach*					
Charleston	1		1		
Clarendon	1		1		
Clarksville	3		1		2
Clinton	3		1		2
Conway	12	2		1	9
Corning	2		1		1
Crossett	4		1		3
Danville	2		1		1
Dardanelle	2		1		1
Decatur Outreach*					
DeQueen	4		1		3
Dermott	1		1		
Des Arc	1		1		
DeWitt	2	1			
Dierks Outreach*					

Outreach offices are not open 5 days a week.
Employees come from local offices when the Outreach is open.

Rovers who travel to multiple offices are listed in supervisory positions in their base office

Dover Outreach*									
Dumas	2					1			1
Earle	1					1			
El Dorado	7		1				1		5
England	2					1			1
Eudora Outreach*									
Fayetteville	9		1				1		7
Fordyce	2					1			1
Forrest City	4					1			3
Fort Smith East	9		1			1			7
Fort Smith Garrison	5		1				2		2
Glenwood	2					1			1
Gravete	2					1			1
Greenbrier	2					1			1
Green Forrest Outreach*									
Greenwood	4		1						3
Hamburg	2					1			1
Hampton	1					1			
Harrisburg	2					1			1
Harrison	6		1				1		4
Hazen	1					1			
Heber Springs	4					1			3
Helena	5		1			1			3
Hope	4					1			3
Horseshoe Bend Outreach*									
Hot Springs Albert Pike	6		2				1		3
Hot Springs Downtown	7		1				1		5
Hot Springs Village	3					1			2
Hughes	1					1			
Huntsville	3		1			1			1
Imboden Outreach*									
Jacksonville	7		1			1			5
Jasper	2					1			1
Jonesboro	13		1				3		9
Lake City	2					1			1

Outreach offices are not open 5 days a week.
 Employees come from local offices when the Outreach is open.

Rovers who travel to multiple offices are listed in supervisory positions in their base office

Lake Village	2			1		1
Leachville Outreach*						
Lead Hill Outreach*				1		
Lewisville	2			1		1
Lincoln	2			1		1
Little Rock Central	11		1		1	9
Lonoke	4			1		3
Magnolia	4		1			3
Malvern	4		1			3
Mammoth Spgs. Outreach*						
Manila Outreach*						
Marianna	2			1		1
Marion	3			1		2
Marked Tree	2			1		1
Marshall	2			1		1
Maumelle	2			1		1
McGehee	2			1		1
Melbourne	3		1	1		1
Mena	4			1		3
Monticello	4		1	1		2
Morrilton	3			1		2
Mountainburg Outreach*						
Mountain Home	6		1		1	4
Mountain View	3		1	1		1
Mt. Ida	2			1		1
Murfreesboro	2			1		1
Nashville	3			1		2
Newport	3			1		2
North Little Rock	5		2		1	2
Osceola	3			1		2
Ozark	3		1	1		1
Paragould	7		2		1	4
Paris	2			1		1
Piggott	2			1		1
Pine Bluff	7		1		1	5

Outreach offices are not open 5 days a week.
 Employees come from local offices when the Outreach is open.

Rovers who travel to multiple offices are listed in supervisory positions in their base office

Pocahontas	3			1		2
Prescott	2			1		1
Ragland Special License	13	2			1	10
Rector	1			1		
Rison	2			1		1
Rogers	8	1		1		6
Russellville	9	1		1	1	6
Salem	2			1		1
Searcy	7	1			1	5
Sheridan	3			1		2
Sherwood	8	1			1	6
Siloam Springs	3			1		2
Smackover	1			1		
Springdale	11	1		1	1	8
Star City	2			1		1
Stephens Outreach*						
Stuttgart	3			1		2
Southwest Little Rock	9	1			1	7
Texarkana	8	2			1	5
Trumann	2			1		1
Van Buren	7	1			1	5
Vilonia Outreach*						
Waldron	2			1		1
Walnut Ridge	4			1	1	2
Warren	2			1		1
West Little Rock	11	1			1	9
West Fork Outreach*						
West Memphis	6	1			1	4
White Hall	6	1			1	4
Wynne	3			1		2
Yellville	2			1		1
	472	50		86	32	304
						472

Outreach offices are not open 5 days a week.
 Employees come from local offices when the Outreach is open.

Rovers who travel to multiple offices are listed in supervisory positions in their base office

Office Name	Employee Name	Title	Grade	Salary	Office Transaction Count
Arkadelphia	Carol J Hughes	DFA Local Revenue Office Supervisor	C114	30,605.54	29,437
	Jenine Michele Runyan	DFA Service Representative	C111	26,438.67	
	Kelisha Brown	DFA Service Representative	C111	24,791.94	
	Lita S Long	DFA Service Representative	C111	24,791.94	
	Jessica D. Gross	DFA Service Representative	C111	24,791.94	22,936
Ash Flat	Tricia L. Jordan	DFA Service Representative	C111	24,791.94	
	Jerry Lynn Roe	DFA Local Revenue Office Supervisor	C114	29,082.14	
Ashdown	Melissa A Booth	DFA Local Revenue Office Supervisor	C114	30,605.54	17,935
	Jacob A Baker	DFA Service Representative	C111	26,438.67	
Atkins Outreach*	Russellville Employee				
Augusta	Tanya M. Stuckey	DFA Service Representative	C111	26,438.67	2,464
	Lavera Dawn Way	DFA Local Revenue Office Supervisor	C114	32,489.39	10,935
Bald Knob	Margaret L Strandridge	DFA Local Revenue Office Supervisor	C114	30,605.54	18,506
	Debbie Denise Gatewood	DFA Service Representative	C111	25,856.69	
Batesville	Judy A. Emler	DFA Supervisor	C113	29,147.25	49,962
	Alisa C. Hatfield	DFA Local Revenue Office Manager	C118	37,200.59	
Beebe	Tonja M. Hewitt	DFA Service Representative	C111	24,065.18	
	Tammy J. Shannon	DFA Service Representative	C111	24,305.84	
	Marsha Smith	DFA Service Representative	C111	24,305.84	
	Susan K McConnaughay	DFA Local Revenue Office Supervisor	C114	30,605.54	30,458
	Joyce M Edwards	DFA Service Representative	C111	26,438.67	
Benton	Wanda Archer	Extra Help	C108	20,788.14	
	Pamela J Watts	DFA Local Revenue Office Manager	C118	37,200.59	61,306
	Krista Michelle Long	DFA Supervisor	C113	38,072.74	
	Catherine A Lee	DFA Service Representative	C111	27,999.50	
	Sandra L Johnson	DFA Service Representative	C111	24,305.84	
Bentonville	Leslie Denise Price	DFA Service Representative	C111	27,482.42	
	Vacant	DFA Service Representative	C111	24,065.00	
	Vacant	DFA Service Representative	C111	24,065.00	
	Cindy Gail Richmond	DFA Local Revenue Office Manager	C118	33,861.15	145,399
	Amanda K Constancio	DFA Service Representative	C111	24,791.94	
Bentonville	Sheri Ann Downs	DFA Service Representative	C111	25,856.59	
	Kelley J Elam	DFA Service Representative	C111	28,065.23	
	Trista L Finster	DFA Service Representative	C111	24,065.18	
	Amanda D Goss	DFA Service Representative	C111	26,438.67	

Outreach offices are not open 5 days a week
Employees come from local offices when the Outreach is open.

6

	Shelly L Rodgers	DFA Service Representative	C111	25,856.69
	Charlotte Faith Clark Snyder	DFA Service Representative	C111	25,856.69
	Tyral J Spence	DFA Service Representative	C111	28,065.23
	Daly Sherree Stephens	DFA Service Representative	C111	24,305.84
	Taylor N Teel	DFA Service Representative	C111	24,305.84
	Jeanette K Womochil	DFA Service Representative	C111	24,305.84
	Vacant	DFA Local Revenue Office Supervisor	C114	27,858.00
	Vacant	DFA Service Representative	C111	24,065.00
	Vacant	DFA Service Representative	C111	24,065.00
	Vacant	DFA Service Representative	C111	24,065.00
Berryville	Bridget Merikaye Contreras	DFA Local Revenue Office Supervisor	C114	30,605.54
	Tina Marie Burger	DFA Service Representative	C111	26,438.67
	Teresa Annette Tibbets	DFA Service Representative	C111	26,438.67
Blytheville	Sabrina Lynn Benson	DFA Supervisor	C113	28,657.41
	Shebrekea Janae Carauthers	DFA Service Representative	C111	24,305.84
	Latonya Rashaal Cullins	DFA Local Revenue Office Manager	C118	34,199.78
	Jennifer Nicole Phillips	DFA Service Representative	C111	24,305.84
Booneville	Gail Devaun Cassity	DFA Local Revenue Office Supervisor	C114	30,605.54
	Michelle D Milkles	DFA Service Representative	C111	26,438.67
Brinkley	Vira Annette Hamilton	DFA Local Revenue Office Supervisor	C114	30,605.54
Bryant	Risa L Ibert	DFA Local Revenue Office Manager	C118	39,861.74
	Rachel A Michel	DFA Service Representative	C111	26,438.67
	Marshall Alan Lewis	DFA Service Representative	C111	24,305.84
	Ebony Dodson	DFA Service Representative	C111	24,305.84
	Marqueena L Simmons	DFA Service Representative	C111	24,305.84
Cabot	Vacant	DFA Local Revenue Office Manager	C118	33,861.00
	Vacant	DFA Service Representative	C111	24,065.00
	Melinda Chandler	DFA Supervisor	C113	29,082.35
	Janice Evans	DFA Service Representative	C111	24,305.84
	Anita Hood	DFA Service Representative	C111	28,571.50
	Shawna R Peeks	DFA Service Representative	C111	24,791.94
Camden	Rita L Long	DFA Local Revenue Office Manager	C118	37,200.59
	Nannie Marvette Smith (Rover)	DFA Local Revenue Office Supervisor	C114	29,932.24
	Tekelia J Davis	DFA Service Representative	C111	26,438.67
	Tyasha L Jackson	DFA Service Representative	C111	24,791.94
	April D Ward	DFA Service Representative	C111	24,065.18

Outreach offices are not open 5 days a week
 Employees come from local offices when the Outreach is open.

Dermott	Fredia S Mcfadden	DFA Local Revenue Office Supervisor	C114	28,699.42	
Des Arc	Stephanie Dobbins	DFA Local Revenue Office Supervisor	C114	28,136.58	6,843
Dewitt	Lindsey n Palmer	DFA Local Revenue Office Supervisor	C114	28,699.42	11,656
	Fran Campbell (Rover)	DFA Local Revenue Office Manager	C118	36,382.11	
Dierks Outreach*	Nashville Employee				1,166
Dover Outreach*	Russellville Employee				1,929
Dumas	Shirley A Walters	DFA Local Revenue Office Supervisor	C114	34,605.79	11,005
	Blake Michael Morgan	DFA Service Representative	C111	26,438.67	
Earle	Pamela E Shelley	DFA Local Revenue Office Supervisor	C114	30,605.54	4,174
El Dorado	Donna Kaye Washington	DFA Local Revenue Office Manager	C118	36,927.90	48,310
	Tameka Kaye Buffington	DFA Supervisor	C113	29,082.14	
	Alicia B Brewer	DFA Service Representative	C111	26,438.67	
	Santana A Meadows	DFA Service Representative	C111	26,050.54	
	Jessica J Crew Frazier	DFA Service Representative	C111	24,791.94	
	Tiffany Thurmon	DFA Service Representative	C111	24,791.94	
	Robin L Farley	DFA Service Representative	C111	24,791.94	
England	Diane W Rice	DFA Local Revenue Office Supervisor	C114	35,208.37	10,290
	Patricia A Lewis	DFA Service Representative	C111	29,010.80	
Eudora Outreach*	Lake Village Employee				1,488
Fayetteville	Danielle Joy Wilson	DFA Local Revenue Office Manager	C118	34,199.78	118,258
	Pamela J Mehaffey	DFA Supervisor	C113	29,082.35	
	Sandra Diane Bounds	DFA Service Representative	C111	24,791.94	
	Linda M Coger	DFA Service Representative	C111	24,065.18	
	Scharrelle Easley	DFA Service Representative	C111	24,791.94	
	Amy B Keeton	DFA Service Representative	C111	24,065.18	
	Felicia Shantaine McComb	DFA Service Representative	C111	26,438.67	
	Tamara Stevens	DFA Service Representative	C111	24,791.94	
	Evelyn M Xayadeth-Moore	DFA Service Representative	C111	24,305.84	
Fordyce	Lily A Young	DFA Local Revenue Office Supervisor	C114	29,082.14	11,370
	Deloris A Rainey	DFA Service Representative	C111	24,791.94	
Forrest City	Sonia Marie Thorne	DFA Local Revenue Office Supervisor	C114	29,082.35	26,725
	Kimberly a Bennett	DFA Service Representative	C111	24,791.94	
	Kristen Nicole Ray	DFA Service Representative	C111	26,244.61	
	Makeeta S Winfrey	DFA Service Representative	C111	24,305.84	
Ft Smith East	Constance Reed Oswald	DFA Local Revenue Office Manager	C118	34,883.89	91,187
	Deborah Lynn Taber	DFA Supervisor	C113	27,271.09	

Outreach offices are not open 5 days a week
 Employees come from local offices when the Outreach is open.

	Julia E Brooks	DFA Service Representative	C111	13,025.27
	Wanda S Haralson	DFA Service Representative	C111	26,438.67
	Kira M Kennedy	DFA Service Representative	C111	24,065.18
	John William Larker	DFA Service Representative	C111	24,065.18
	Kimberly A Parker	DFA Service Representative	C111	24,791.94
	Tiffany V Phimvongsa	DFA Service Representative	C111	12,032.59
	Ronald D Wells	DFA Service Representative	C111	24,791.94
Ft Smith Garrison	Kellie M Owens	DFA Local Revenue Office Manager	C118	37,200.59
	Jennifer Jeffcoat Ulmer	DFA Supervisor	C113	28,655.95
	Patricia A Brison	DFA Service Representative	C111	31,395.52
	Rhonda D Sinkuler	DFA Service Representative	C111	25,859.60
	Ora L Dumas (Rover)	DFA Supervisor	C113	29,147.25
Glenwood	Sharon K Pipkins	DFA Local Revenue Office Supervisor	C114	32,489.39
	Rhonda Renee Raines	DFA Service Representative	C111	26,438.67
Gravette	Gloria J Salkill	DFA Local Revenue Office Supervisor	C114	28,699.42
	Mary Ruth Poe	DFA Service Representative	C111	26,438.67
Greenbrier	Sherry L Garrett	DFA Local Revenue Office Supervisor	C114	30,605.54
	Amelia Ann Rooney	DFA Service Representative	C111	26,438.67
Green Forrest Outreach*	Harrison Employee			3,262
Greenwood	Regina F Cantrell	DFA Local Revenue Office Manager	C118	37,200.59
	Kimberly D Cox	DFA Service Representative	C111	24,791.94
	Shanna Angelique Lamont-Fox	DFA Service Representative	C111	26,438.67
	Karen A Olsen	DFA Service Representative	C111	24,305.84
Hamburg	Lela M Campbell	DFA Local Revenue Office Supervisor	C114	37,045.22
	Nicole L Breedlove	DFA Service Representative	C111	24,305.84
Hampton	Vacant	DFA Local Revenue Office Supervisor	C114	27,858.00
	Debra Lynn Hickenbotham	DFA Service Representative	C111	26,438.67
Harrisburg	Georgia Lee Owens	DFA Local Revenue Office Supervisor	C114	28,699.42
Harrison	Kathy A Cikanek	DFA Local Revenue Office Manager	C118	37,200.59
	Krista Ann Hutton	DFA Supervisor	C113	29,082.35
	Angela Nicole Bailey	DFA Service Representative	C111	26,244.61
	Eva D Braden	DFA Service Representative	C111	26,438.67
	Mark J Gray	DFA Service Representative	C111	24,305.84
	Cindy Ann Jackson	DFA Service Representative	C111	26,438.67
Hazen	Gail C Qualls	DFA Local Revenue Office Supervisor	C114	32,489.39
Heber Springs	Carol Lee Baker	DFA Service Representative	C111	26,438.67

Outreach offices are not open 5 days a week
Employees come from local offices when the Outreach is open.

	Dina G. Davenport	DFA Service Representative	C111	26,438.67
	Kela J. Stevenson	DFA Local Revenue Office Supervisor	C114	32,660.99
	Melissa J. Vice	DFA Service Representative	C111	26,438.67
Helena	Barbara A Hayes	DFA Local Revenue Office Supervisor	C114	32,809.50
	Linda K Shannon	DFA Service Representative	C111	26,438.67
	Vickie Washington	DFA Service Representative	C111	25,856.69
	Kimberly Denise Johnson	DFA Service Representative	C111	26,244.61
	Sharon Lynn Harris (Rover)	DFA Local Revenue Office Manager	C118	49,226.53
Hope	Margie E Dooley	DFA Local Revenue Office Supervisor	C114	30,605.54
	Kristen L Hodges	DFA Service Representative	C111	24,065.18
	Vickie L Bateman	DFA Service Representative	C111	24,791.94
	Julie Dalene Paddie	DFA Service Representative	C111	25,856.69
Horseshoe Bend Outreach*	Melbourne Employee			864
Hot Springs Albert Pike	Pamela June Lafferty	DFA Local Revenue Office Manager	C118	36,382.11
	Roger W Bright (Rover)	DFA Local Revenue Office Manager	C118	34,199.78
	Vacant	DFA Supervisor	C113	26,531.00
	Michael C Hall	DFA Service Representative	C111	24,791.94
	Tamara A Brown	DFA Service Representative	C111	25,856.69
	Vacant	DFA Service Representative	C111	24,065.00
Hot Springs Downtown	Mary D Robbins	DFA Local Revenue Office Manager	C118	34,883.89
	Susan K Kelly	DFA Supervisor	C113	29,082.14
	Donald A Hughes	DFA Service Representative	C111	26,438.67
	Katherine J Pate	DFA Service Representative	C111	24,791.94
	Melissa Eunice Spakes	DFA Service Representative	C111	26,438.67
	Velvet E Trehern	DFA Service Representative	C111	25,856.69
	Faleasha A Young	DFA Service Representative	C111	24,305.84
Hot Springs Village	Mona Kathleen Tillery	DFA Local Revenue Office Supervisor	C114	30,605.54
	Martha Allison Fryar	DFA Service Representative	C111	26,438.67
	Linda Louise Davis	DFA Service Representative	C111	26,438.67
Hughes	Deborah J Shirley	DFA Local Revenue Office Supervisor	C114	44,946.72
Huntsville	Vacant	DFA Local Revenue Office Supervisor	C114	27,858.00
	Aimee M Usrey	DFA Service Representative	C111	24,791.94
	Shelly A Alexander (Rover)	DFA Local Revenue Office Manager	C118	37,200.59
Imboden Outreach*	Walnut Ridge Employee			3,336
Jacksonville	Carla P Turley	DFA Local Revenue Office Manager	C118	34,199.78
	Jacqueline Laverne Johnson	DFA Supervisor	C113	28,869.15

Outreach offices are not open 5 days a week
 Employees come from local offices when the Outreach is open.

	Latonia Luckadue	DFA Service Representative	C111	29,085.68
	Sylvia Rose Thomas	DFA Service Representative	C111	26,438.67
	Demetria K Young	DFA Service Representative	C111	25,668.66
	Christen J Schellenberg	DFA Service Representative	C111	24,305.84
	Cristal G Kennedy	DFA Service Representative	C111	24,305.84
Jasper	Alisha Nicole Martin	DFA Local Revenue Office Supt	C114	30,605.54
	Debbie A Roberts	DFA Service Representative	C111	26,438.67
Jonesboro	Vacant	DFA Service Representative	C111	24,065.00
	Shirley R. Gaines	DFA Service Representative	C111	26,377.94
	Veronica Hager	DFA Service Representative	C111	24,791.94
	Charles A. Hill	DFA Service Representative	C111	24,791.94
	Kelly Marie Morgan	DFA Supervisor	C113	28,933.63
	Robin D. Muir	DFA Local Revenue Office Manager	C118	37,200.59
	Teresa Kay Poe	DFA Service Representative	C111	26,244.61
	Tracy A. Schmidt	DFA Service Representative	C111	24,305.84
	Annette Arnold Stone	DFA Service Representative	C111	24,546.50
	Carolyn Faye Taylor	DFA Supervisor	C113	29,147.25
	Bradley S. Wallace	DFA Service Representative	C111	24,791.94
	Geneva L. Webb	DFA Supervisor	C113	27,271.09
	Carolyn Evon Williams	DFA Service Representative	C111	26,052.21
Lake City	Jennifer O'Neal Kelems	DFA Service Representative	C111	26,052.21
	Jamie Lynn Wallace	DFA Local Revenue Office Supervisor	C114	30,605.54
Lake Village	Phyllis R Reginelli	DFA Local Revenue Office Supervisor	C114	29,932.24
	Tiffany D Dixon	DFA Service Representative	C111	24,791.94
Leachville Outreach*	Lisa Ann Smith	DFA Local Revenue Office Supervisor	C114	30,605.54
Lead Hill Outreach*	Harrison Employee			1,426
Lewisville	Donna A McDowell	DFA Local Revenue Office Supervisor	C114	27,858.06
	Lisa Anne Burns	DFA Service Representative	C111	24,065.18
Lincoln	Pamela L Pyeatte	DFA Local Revenue Office Supervisor	C114	32,489.39
	Angela R Langway	DFA Service Representative	C111	24,305.84
Little Rock Central	Vacant	DFA Local Revenue Office Manager	C118	33,861.00
	Sandra M Johnson	DFA Supervisor	C113	28,506.19
	Kaneesha A Bell	DFA Service Representative	C111	24,065.18
	Sylvia L Brown	DFA Service Representative	C111	26,438.67
	Donna M Brummett	DFA Service Representative	C111	24,791.94
	Priscilla A Garcia	DFA Service Representative	C111	24,065.18

Outreach offices are not open 5 days a week
Employees come from local offices when the Outreach is open.

	Lalena M Holt	DFA Service Representative	C111	24,791.94	
	April L Wilson	DFA Service Representative	C111	26,438.67	
	Yvone R Williams	DFA Service Representative	C111	26,438.67	
	Jazmenn J Wright	DFA Service Representative	C111	24,305.84	
	Vacant	DFA Service Representative	C111	24,065.00	
Lonoke	Gerry Ray	DFA Local Revenue Office Supervisor	C114	33,733.44	20,935
	Amber N Moore	DFA Service Representative	C111	24,791.94	
	Kimberly A Sisson	DFA Service Representative	C111	24,305.84	
	Brennon W Ingle (Rover)	DFA Local Revenue Office Supervisor	C114	28,569.63	
Magnolia	Gloria L Counter	DFA Local Revenue Office Manager	C118	37,200.59	32,053
	Glenda G Gunnels	DFA Service Representative	C111	26,438.67	
	Hali Machelie Hampton	DFA Service Representative	C111	24,305.84	
	Sonya M Edington	DFA Service Representative	C111	24,065.18	
Malvern	Burt T Ashburn	DFA Local Revenue Office Manager	C118	34,726.22	36,947
	Debbie D Hastings	DFA Service Representative	C111	24,791.94	
	Holly W Duncan	DFA Service Representative	C111	24,305.84	
	Crystal D Motes	DFA Service Representative	C111	31,814.22	
Mammoth Springs Outreach*	Melbourne Employee				1,461
Manila Outreach*	Leachville Employee				5,144
Marianna	Mary E Palmer	DFA Local Revenue Office Supervisor	C114	30,605.54	10,922
	Elizabeth Guest	DFA Service Representative	C111	26,438.67	
Marion	Ronda J Woods	DFA Local Revenue Office Supervisor	C114	29,932.24	19,963
	Denita D Hood	DFA Service Representative	C111	24,791.94	
	Monica D Stevens	DFA Service Representative	C111	24,305.84	
Marked Tree	Sarah L Brewer	DFA Service Representative	C111	26,438.67	11,192
	Linda C. Washington	DFA Local Revenue Office Supervisor	C114	30,605.54	
Marshall	Haley A. Blackwell	DFA Service Representative	C111	24,065.18	10,926
	Vickie L. Fountain	DFA Local Revenue Office Supervisor	C114	30,605.54	
Maumelle	LaConstance R Hune	DFA Local Revenue Office Supervisor	C114	28,136.58	28,995
	Keaira L Mack	DFA Service Representative	C111	24,791.84	
McGehee	Linda D Merritt	DFA Local Revenue Office Supervisor	C114	34,969.58	8,115
	Connie Lynn Terry	DFA Service Representative	C111	26,438.67	
Melbourne	Anna F. Hopper	DFA Local Revenue Office Supervisor	C114	30,605.54	16,484
	Sabrina L. Vaughn (Rover)	DFA Local Revenue Office Manager	C118	34,199.78	
	Cynthia A. Ward	DFA Service Representative	C111	24,791.94	
Mena	Pamela L Huff	DFA Local Revenue Office Supervisor	C114	29,082.35	26,601

Outreach offices are not open 5 days a week
Employees come from local offices when the Outreach is open.

	Tracey Dawn Foster	DFA Service Representative	C111	26,438.67
	Bety Sue Barrett	DFA Service Representative	C111	24,305.84
	Chelsee M Shores	DFA Service Representative	C111	24,791.94
Monticello	Eunice C Watson	DFA Local Revenue Office Supervisor	C114	30,605.54
	Midge Malla Baughn	DFA Service Representative	C111	26,438.67
	Debbie Ellen Walls	DFA Service Representative	C111	26,438.67
	Mark E Cater (Rover)	DFA Local Revenue Office Manager	C118	37,200.59
Morrilton	Rhonda G Finton	DFA Local Revenue Office Supervisor	C114	30,605.54
	Lynn Rae Masker	DFA Service Representative	C111	26,244.61
	Teresa Naff	DFA Service Representative	C111	26,438.67
Mountainburg Outreach*	Fort Smith East Employee			1,818
Mountain Home	Becky Howard	DFA Service Representative	C111	24,791.94
	Pamela S. Kapshandy	DFA Service Representative	C111	24,305.84
	Amber R. Knapp	DFA Service Representative	C111	24,305.84
	Denise L. Lane	DFA Service Representative	C111	24,791.94
	Kimberly M. Stinnett	DFA Supervisor	C113	27,816.46
	Suzanne Justine Vaughn	DFA Local Revenue Office Manager	C118	34,199.78
Mountain View	Pamela J. Henderson	DFA Local Revenue Office Supervisor	C114	29,935.36
	Tena G. Tate (Rover)	DFA Local Revenue Office Manager	C118	37,200.59
	Tommy Brent Taylor	DFA Service Representative	C111	25,859.60
Mt. Ida	Nicki L. Jones	DFA Local Revenue Office Supervisor	C114	37,791.52
	Eunice Jeanne Thew	DFA Service Representative	C111	26,438.67
Murfreesboro	Francis D Humphry	DFA Local Revenue Office Supervisor	C114	30,605.54
	Shanna DeAnne Coleman	DFA Service Representative	C111	26,438.67
Nashville	Rebecca J Ray	DFA Local Revenue Office Supervisor	C114	42,214.64
	Lisa D Sharp	DFA Supervisor	C113	30,942.70
	Suzanna L Brewer	DFA Service Representative	C111	26,438.67
Newport	Cary A. Barner-Nelson	DFA Service Representative	C111	28,065.23
	Doris E. Hill	DFA Service Representative	C111	26,438.67
	Lee D. Madden	DFA Local Revenue Office Supervisor	C114	38,746.66
North Little Rock	Loretta D Mitchell (Rover)	DFA Local Revenue Office Manager	C118	37,200.59
	Marion R Berry	DFA Local Revenue Office Manager	C118	39,490.88
	Phyllis A Gray	DFA Supervisor	C113	30,942.70
	Shapan T Kelly	DFA Service Representative	C111	25,859.60
	Ivory E Jones	DFA Service Representative	C111	24,065.18
Osceola	Vicky L. Copeland	DFA Service Representative	C111	26,438.67

Outreach offices are not open 5 days a week
Employees come from local offices when the Outreach is open.

	Nina C. Harris	DFA Service Representative	C111	29,151.82
	Brenda S. Lee	DFA Local Revenue Office Supervisor	C114	36,667.28
Ozark	Cynthia S Rowe	DFA Local Revenue Office Supervisor	C114	28,699.42
	Quejette Jones	DFA Service Representative	C111	26,244.61
	Thomas Mark Deaton (Rover)	DFA Local Revenue Office Manager	C118	36,382.11
Paragould	Vacant	DFA Service Representative	C111	24,065.00
	Stacy A. Curry	DFA Supervisor	C113	28,657.41
	Vicki R. Huckabay	DFA Service Representative	C111	24,791.94
	Amanda Rose Traxler	DFA Service Representative	C111	24,791.94
	Kathy S. Vowell	DFA Local Revenue Office Manager	C118	37,200.59
	Linda C. Woodward	DFA Service Representative	C111	25,667.20
	Christy M. Boothe (Rover)	DFA Local Revenue Office Manager	C118	34,199.78
Paris	Anita M Forst	DFA Local Revenue Office Supervisor	C114	34,923.41
	Kimberly M Bolden	DFA Service Representative	C111	26,244.61
Perryville	Trinity M Grimstead	DFA Local Revenue Office Supervisor	C114	28,136.58
	Debra K Hogan	DFA Service Representative	C111	24,791.94
Piggott	Penny S. Hill	DFA Local Revenue Office Supervisor	C114	29,082.14
	Lori A. Parker	DFA Service Representative	C111	24,791.94
Pine Bluff	Marion D Martin-Williams	DFA Local Revenue Office Manager	C118	39,961.58
	Debra Thornton	DFA Supervisor	C113	30,942.70
	Gracye R Broom	DFA Service Representative	C111	26,438.67
	Gindy T Daniels	DFA Service Representative	C111	24,065.18
	Carrie Mae Giles	DFA Service Representative	C111	26,438.67
	Lakeisha D Welch	DFA Service Representative	C111	24,791.94
	Lisa R Chambliss	DFA Service Representative	C111	24,065.18
Pocahontas	Sally Beth King	DFA Service Representative	C111	26,438.67
	Michele J. Thielemier	DFA Service Representative	C111	24,791.94
	Melissa A. Vandergriff	DFA Local Revenue Office Supervisor	C114	30,605.54
Prescott	Angie R Faulkner	DFA Local Revenue Office Supervisor	C114	29,082.56
	Tera L McKinnon	DFA Service Representative	C111	24,305.84
Ragland Special License	Kelly Riggs	DFA Local Revenue Office Manager	C118	34,199.78
	Tonya Spivey	DFA Supervisor	C113	29,082.35
	Amanda Boyd	DFA Service Representative	C111	26,438.67
	Casey Creed	DFA Service Representative	C111	24,305.84
	Cathy Vanderver	DFA Service Representative	C111	24,065.18
	Engracia Wallace	DFA Service Representative	C111	24,305.84

Outreach offices are not open 5 days a week
 Employees come from local offices when the Outreach is open.

	Keitra Hawkins	DFA Service Representative	C111	24,305.84	
	Lynn Smith	DFA Service Representative	C111	26,438.67	
	Stephanie Brummett	DFA Service Representative	C111	24,305.84	
	Lisa Norwood	DFA Service Representative	C111	24,305.84	
	Helen Walker	DFA Service Representative	C111	26,438.67	
	Vacant	DFA Service Representative	C111	24,065.00	
	Bobbie W Bohlar (Rover)	DFA Local Revenue Office Manager	C118	37,200.59	
Rector	Sarah B. Miner	DFA Local Revenue Office Supervisor	C114	30,605.54	5,894
Rison	Kristi Lynn White	DFA Local Revenue Office Supervisor	C114	29,082.14	8,596
	Hannah E Terry	DFA Service Representative	C111	24,791.94	
Rogers	Tina M Magnuson	DFA Local Revenue Office Manager	C118	33,861.15	83,522
	Gyenn Bouchard	DFA Service Representative	C111	26,438.67	
	Lisa Gilbert	DFA Service Representative	C111	24,305.84	
	Stephanie E Rogers	DFA Service Representative	C111	26,244.61	
	Linda A Shimko	DFA Service Representative	C111	24,791.94	
	Kathryn J Swadley	DFA Service Representative	C111	24,791.94	
	Beverly Joe Vaughn	DFA Service Representative	C111	26,438.67	
	Vacant	DFA Local Revenue Office Supervisor	C114	27,858.00	
Russellville	Krisha L Teague	DFA Local Revenue Office Manager	C118	34,199.78	73,008
	Melissa K Whitbey	DFA Supervisor	C113	29,082.35	
	Alvine Leanea Caldwell	DFA Service Representative	C111	26,244.61	
	Janel Collins-Lang	DFA Service Representative	C111	24,305.84	
	Raven L Cox	DFA Service Representative	C111	24,065.18	
	Tiffany L Deal	DFA Service Representative	C111	36,239.84	
	Bertha M Kellybrew	DFA Service Representative	C111	24,065.18	
	Toni A Mckown	DFA Service Representative	C111	26,438.67	
	Melody J Short (Rover)	DFA Local Revenue Office Supervisor	C114	30,605.54	
	Rhonda S Sydow	DFA Service Representative	C111	24,305.84	
Salem	Anna J. Humphries	DFA Local Revenue Office Supervisor	C114	30,605.54	15,642
	Kimberly Dawn Zook	DFA Service Representative	C111	25,856.69	
Searcy	Deborah L Reed	DFA Local Revenue Office Manager	C118	37,200.59	66,485
	Kristin Lanette Hernandez	DFA Supervisor	C113	29,082.14	
	Catherine M Gillen	DFA Service Representative	C111	24,791.94	
	Alexandria D Rowton	DFA Service Representative	C111	24,791.94	
	Jessica E Baker	DFA Service Representative	C111	24,791.94	
	Donnie G Cook	DFA Service Representative	C111	24,305.84	

Outreach offices are not open 5 days a week
Employees come from local offices when the Outreach is open.

	Teresa M Allred	DFA Service Representative	C111	24,065.18	
Sheridan	Jackie S Cotton	DFA Local Revenue Office Supervisor	C114	28,869.15	22,964
	Shelia M Harrington	DFA Service Representative	C111	24,791.94	
Sherwood	Afton R Craig	DFA Service Representative	C111	24,065.18	
	Jasmine Marie Norwood	DFA Local Revenue Office Manager	C118	33,861.15	84,312
	Sean R Preachers	DFA Supervisor	C113	27,271.09	
	Sonia Veronica McFarlane-Henry	DFA Service Representative	C111	26,438.67	
	Lisa Harp	DFA Service Representative	C111	25,667.20	
Siloam Springs	Tyjuana M Miles	DFA Service Representative	C111	24,791.94	
	Robyn Gayle Brown	DFA Service Representative	C111	24,305.84	
	Janice R Hobson	DFA Service Representative	C111	24,305.84	
	Charles A Dougan	DFA Service Representative	C111	24,065.18	
	Norene M Drinkwater	DFA Local Revenue Office Supervisor	C114	28,699.42	31,470
	Mary A Burrell	DFA Service Representative	C111	26,438.67	
	Cynthia K Hoyt	DFA Service Representative	C111	26,438.67	
	Vacant	DFA Service Representative	C111	24,065.00	
	Johnnie B Johnson	DFA Local Revenue Office Supervisor	C114	32,062.16	7,704
	Karen H Davis	DFA Local Revenue Office Manager	C118	34,883.89	130,120
Smackover Springdale	Lacie Jayann Reese	DFA Supervisor	C113	28,869.15	
	Annie K Campbell	DFA Service Representative	C111	24,305.84	
	Patricia D DeLong	DFA Service Representative	C111	24,791.94	
	Christi L Gibson	DFA Service Representative	C111	24,305.84	
	Martha Ivet Martinez	DFA Service Representative	C111	24,305.84	
	Berenice Mondragon	DFA Service Representative	C111	25,859.60	
	Karen June Paslay	DFA Service Representative	C111	26,244.61	
	Debra Jean Sinclair	DFA Service Representative	C111	26,244.61	
	Celia M Trejo	DFA Service Representative	C111	24,065.18	
	Regina E Dudley (Rover)	DFA Local Revenue Office Supervisor	C114	30,605.54	
	James Glenn Haley	DFA Local Revenue Office Supervisor	C114	30,605.54	13,303
	Pamela R Fish	DFA Service Representative	C111	26,438.67	
	Camden Employee				984
	Maud E London	DFA Local Revenue Office Supervisor	C114	29,082.14	20,505
	Stephens Outreach* Stuttgart	Tammy L Brandon	DFA Service Representative	C111	24,791.94
Linda A Harrison		DFA Service Representative	C111	24,305.84	
Carolyn M Daniel		DFA Local Revenue Office Manager	C118	36,654.80	82,201
Angela L Gilkey		DFA Supervisor	C113	28,869.15	

Outreach offices are not open 5 days a week
 Employees come from local offices when the Outreach is open.

	Shawna D Givens	DFA Service Representative	C111	24,305.84	
	Patricia A Day-Parker	DFA Service Representative	C111	24,791.94	
	Clinton C Anderson	DFA Service Representative	C111	24,065.18	
	Vacant	DFA Service Representative	C111	24,065.00	
	Vacant	DFA Service Representative	C111	24,065.00	
	Vacant	DFA Service Representative	C111	24,065.00	
	Vacant	DFA Service Representative	C111	24,065.00	
Texarkana	Cynthia A Booth	DFA Local Revenue Office Manager	C118	40,049.57	60,865
	Barbara J Allen (Rover)	DFA Local Revenue Office Manager	C118	33,861.15	
	Shauntal D Collins	DFA Supervisor	C113	29,082.14	
	Shayla Bolden	DFA Service Representative	C111	24,791.94	
	Carolyn Denise Burks	DFA Service Representative	C111	26,052.21	
	Betty Carol Moss	DFA Service Representative	C111	26,438.67	
	John Nguyen	DFA Service Representative	C111	24,791.94	
	Kathy M Powell	DFA Service Representative	C111	24,791.94	
Trumann	Vickie D. Davis	DFA Service Representative	C111	25,667.20	14,765
	Anna P. Looney	DFA Local Revenue Office Supervisor	C114	29,493.15	
Van Buren	Lou Jean Milton	DFA Local Revenue Office Manager	C118	39,490.88	64,330
	Cynthia Marie Burkholder	DFA Supervisor	C113	29,147.25	
	Lara N Aspedon	DFA Service Representative	C111	25,856.69	
	Kelly L Laves	DFA Service Representative	C111	26,438.67	
	Gayle A Meadows	DFA Service Representative	C111	24,791.94	
	Charla Kay Pike	DFA Service Representative	C111	25,859.60	
	Jessica M Riviera	DFA Service Representative	C111	24,791.94	
Vilonia Outreach*	Conway Employee				6,173
Waldron	Patty Ridenhour	DFA Local Revenue Office Supervisor	C114	30,605.54	
	Lisa Fowler	DFA Service Representative	C111	26,438.67	14,386
Walnut Ridge	Marjorie D. Barber	DFA Service Representative	C111	24,305.84	22,228
	Deborah J. Foley	DFA Local Revenue Office Supervisor	C114	33,367.15	
	Kelli B. O'Neal	DFA Supervisor	C113	27,816.46	
	Amber L. Young	DFA Service Representative	C111	24,305.84	
Warren	Johnnie M Mangum	DFA Local Revenue Office Supervisor	C114	30,605.54	17,543
	Larry D Watson	DFA Service Representative	C111	25,287.81	
	Deborah Louise Smith	DFA Service Representative	C111	26,438.67	
West Little Rock	Cynthia M Henman	DFA Local Revenue Office Manager	C118	34,883.89	126,900
	Cultna A Phillips	DFA Supervisor	C113	27,271.09	

Outreach offices are not open 5 days a week
Employees come from local offices when the Outreach is open.

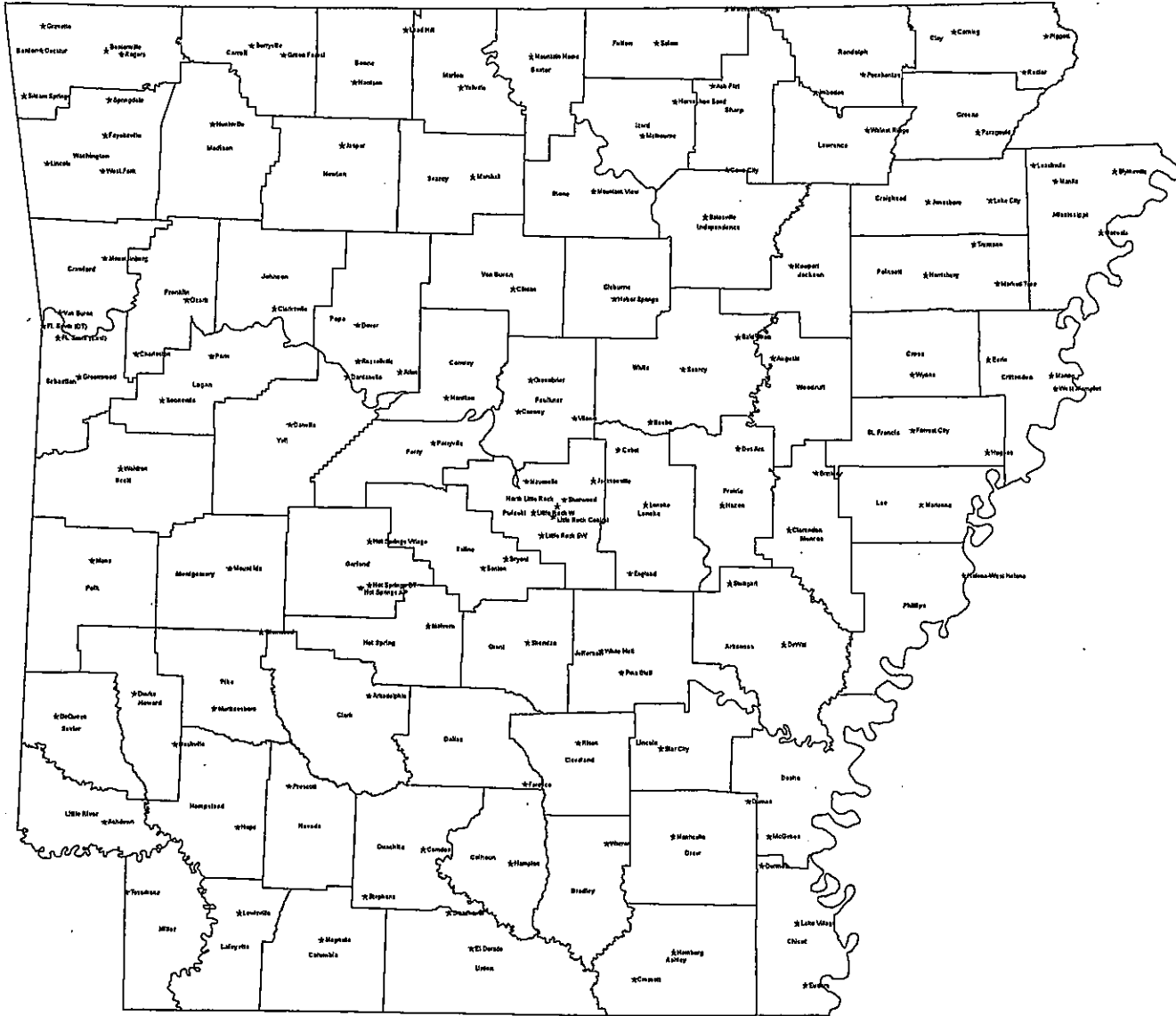
	Aretha Franklin	DFA Service Representative	C111	26,438.67	
	Katrina L Childress	DFA Service Representative	C111	26,438.67	
	Djuana P Thrash	DFA Service Representative	C111	25,859.60	
	Eric S Gravitt	DFA Service Representative	C111	24,791.94	
	Heather Marie Truan	DFA Service Representative	C111	26,244.61	
	Rochelle D Johnson	DFA Service Representative	C111	24,546.50	
	Sharon K Boehm	DFA Service Representative	C111	24,305.84	
	Nicole L Calhoun	DFA Service Representative	C111	24,305.84	
	Cameron Barnett (Rover)	DFA Service Representative	C111	24,791.94	
West Fork Outreach*	Fayetteville Employee			1,880	
West Memphis	Kathy J Pitts	DFA Local Revenue Office Manager	C118	34,883.89	45,458
	Ernestine Thomas	DFA Supervisor	C113	28,720.02	
	Marilyn Willis	DFA Service Representative	C111	26,050.54	
	Tracy T Farmer	DFA Service Representative	C111	25,667.20	
	Cathy B Jenkins	DFA Service Representative	C111	26,050.54	
	Patricia A Sprinkle	DFA Service Representative	C111	26,244.61	
White Hall	Brenda G Delahunt	DFA Local Revenue Office Manager	C118	41,505.57	37,250
	Willie A Martin	DFA Supervisor	C113	29,082.14	
	Tarondalette R Anderson	DFA Service Representative	C111	27,544.82	
	Merrion L Byrd	DFA Service Representative	C111	24,305.84	
	Roberta M Wood	DFA Service Representative	C111	25,856.69	
	Brenda Joyce Martin	DFA Service Representative	C111	25,859.60	
Wynne	Anita M. Lucas	DFA Service Representative	C111	26,438.67	25,187
	Lisa L. Owens	DFA Service Representative	C111	24,305.84	
	Mary L. Parkman	DFA Local Revenue Office Supervisor	C114	35,213.78	
Yellville	Katrina Lynn Lowery	DFA Service Representative	C111	24,065.18	22,506
	Deborah A. Parnell	DFA Local Revenue Office Supervisor	C114	30,605.54	
	Angela June White	DFA Service Representative	C111	26,438.67	
Central/District Managers Office	Tara K Smith	DFA Revenue Office Dist Manager	C121	58,030.13	Little Rock
Central/District Managers Office	Sondra K Thomas	DFA Revenue Assistant Manager	C119	43,936.05	
Central/District Managers Office	Cindy S Manning-Benson	Administrative Specialist	C109	33,480.51	

Outreach offices are not open 5 days a week
 Employees come from local offices when the Outreach is open.

NE District Managers Office	Amy M. Brown	DFA Revenue District Manager	C121	43,064.74	Jonesboro
NE District Managers Office	Tiffany B. Deatherage	DFA Administrative Specialist II	C109	22,045.30	
NE District Managers Office	Wendy L. Goodon	DFA Revenue Assistant D Manager	C119	40,920.67	
NW District Managers Office	Loretta L Turner	DFA Revenue Office District Manager	C121	42,966.56	Fayetteville
NW District Managers Office	Karen L Hopkins	DFA Revenue Office Asst District Manager	C119	40,920.67	
NW District Managers Office	Virginia A Phelan	Administrative Specialist II	C109	38,537.82	
SE District Manager Office	Janice Lung	DFA Revenue Office District Manager	C121	44,022.37	Stuttgart
SE District Manager Office	Tonya C Highfill	DFA Revenue Office asst. District Manager c.119	C119	35,909.54	
SE District Manager Office	Vickie Howard	Administrative specialist ii	C114	29,107.73	
SW District Manager Office	Melinda K Williams	DFA Revenue Office Dist. Manager	C121	49,351.33	Prescott
SW District Manager Office	Sylvia M Humphry	DFA Revenue Assistant Manager	C119	40,920.67	
SW District Manager Office	Shanna M Loe	Administrative Specialist	C109	25,456.08	
The 134 State Revenue Offices are divided into five districts.					

Outreach offices are not open 5 days a week
 Employees come from local offices when the Outreach is open.

DFA Map of Revenue Offices



DFA Revenue Office Types

- ★ Outreach
- Full Time

Office Locations as of 6-19-2015

AS
CE

ARKANSAS STATE REVENUE OFFICES

Thursday, July 09, 2015

ARKANSAS

Dewitt
Stuttgart

ASHLEY

Crossett
Hamburg

BAXTER

Mountain Home

BENTON

Benton Co.
Decatur
Gravette
Rogers
Siloam Springs

BOONE

Harrison
Lead Hill

BRADLEY

Warren

CALHOUN

Hampton

CARROLL

Berryville
Green Forrest

CHICOT

Dermott
Eudora
Lake Village

CLARK

Arkadelphia

CLAY

Coming
Piggott
Rector

CLEBURNE

Heber Springs

CLEVELAND

Rison

COLUMBIA

Magnolia

CONWAY

Morrilton

CRAIGHEAD

Jonesboro
Lake City

CRAWFORD

Mountainburg
Van Buren

CRITTENDEN

Earle
Marion
West Memphis

CROSS

Wynne

DALLAS

Fordyce

DESHA

Dumas
McGehee

DREW

Monticello

FAULKNER

Conway
Greenbrier
Vilonia

FRANKLIN

Charleston
Ozark

FULTON

Mammoth Springs
Salem

GARLAND

Hot Springs
Hot Springs AP
Hot Springs VLG

GRANT

Sheridan

GREENE

Paragould

HEMPSTEAD

Hope

HOT SPRING

Malvern

HOWARD

Dierks
Nashville

INDEPENDENCE

Batesville

IZARD

Horseshoe Bend
Melbourne

JACKSON

Newport

JEFFERSON

Pine Bluff
White Hall

JOHNSON

Clarksville

LAFAYETTE

Lewisville

LAWRENCE

Imboden
Walnut Ridge

LEE

Marianna

LINCOLN

Star City

LITTLE RIVER

Ashdown

LOGAN

Booneville
Paris

LONOKE

Cabot
England
Lonoke

MADISON

Huntsville

MARION

Yellville

MILLER

Texarkana

MISSISSIPPI

Blytheville
Leachville
Manila
Osceola

MONROE

Brinkley
Clarendon

MONTGOMERY

Mount Ida

NEVADA

Prescott

NEWTON

Jasper

OUACHITA

Camden
Stephens

PERRY

Perryville

PHILLIPS

Helena-West Helena

PIKE

Glenwood
Murfreesboro

POINSETT

Harrisburg
Marked Tree
Trumann

POLK

Mena

POPE

Atkins
Dover
Russellville

PRAIRIE

Des Arc
Hazen

PULASKI

Jacksonville
Little Rock Central
Little Rock Ragland
Little Rock SW
Little Rock West
Maumelle
North Little Rock
Sherwood

RANDOLPH

Pocahontas

ST. FRANCIS

Forrest City
Hughes

SALINE

Benton
Bryant

SCOTT

Waldron

SEARCY

Marshall

SEBASTIAN

Fort Smith
Fort Smith East
Greenwood

SEVIER

DeQueen

SHARP

Ash Flat
Cave City

STONE

Mountain View

UNION

El Dorado
Smackover

VAN BUREN

Clinton

WASHINGTON

Fayetteville
Lincoln
Springdale
West Fork

WHITE

Bald Knob
Beebe
Searcy

WOODRUFF

Augusta

YELL

Danville
Dardanelle

ARKADELPHIA (Clark 10-02) (4)
Carol Jo Hughes, Agent
615 Clay, 71923
(870) 246-6733, Fax 230-1643

ASHDOWN (Little River 41-02) (2)
Melissa Booth, Agent
390 West Main Street, 71822
(870) 898-3255, Fax 898-8415

ASH FLAT (Sharp 68-03) (3)
Jerry Roe, Agent
718 Ash Flat Drive, Building 100, Room 4,
Wing C, P.O. Box 273, 72513
(870) 994-7357, Fax 994-2035
M- F 8:00 – 4:00

ATKINS (Pope 58-03) (1)
Krishelle Teague, Agent
220 East Main Street, 72823
(479) 641-2642
Wednesday Only 8:00 – 3:30
SEND MAIL TO RUSSELLVILLE

AUGUSTA (Woodruff 74-01) (2)
Dawn Way, Agent
502 North 3rd, Room B, 72006
(870) 347-2213, Fax 347-1613

BALD KNOB (White 73-02) (2)
Margaret Standridge, Agent
2610 Hwy. 367 North, 72010
(501) 724-3147, Fax 724-0098

BATESVILLE (Independence 32-01) (5)
Alisa Hatfield, Agent
1207 East Main, 72501
(870) 793-7441, Fax 793-1155

BEEBE (White 73-03) (2)
Susan McConnaughay, Agent
206 West Center, 72012
(501) 882-6777, Fax 882-6650

BENTON (Saline 63-01) (7)
Pamela Watts, Agent
215 North Main, 72015
(501) 778-4876, 778-4323, Fax 778-0506

BENTONVILLE (Benton 04-01) (16)
Benton County Central
Cindy Richmond, Agent
2401 SW D Street, Suite 3, 72712
(479) 273-2724 , Fax 273-1082
M-F 7:00 – 6:00

BERRYVILLE (Carroll 08-02) (3)
Bridget Contreras, Agent
105 Spring Street, 72616
(870) 423-2046, Fax 423-3347

BLYTHERVILLE (Mississippi 47-01) (4)
LaTonya Cullins, Agent
1818 S. Division, Suite C, 72315
(870) 762-2321, Fax 762-2375

BOONEVILLE (Logan 42-01) (2)
Gail Cassity, Agent
123 N. Broadway Avenue, 72927
(479) 675-3101, Fax 675-5360

BRINKLEY (Monroe 48-01) (1)
Annette Hamilton, Agent
309 West Cedar, 72021
(870) 734-1816, Fax 734-0525

BRYANT (Saline 63-02) (5)
Risa Ibert, Agent
101 Suite G, NW 3rd Street,
Stonebridge Center, 72022
(501) 847-5080, Fax 847-2458

CABOT (Lonoke 43-02) (6)
Agent
1604 South Pine, Suite F, 72023
(501) 843-5836, Fax 843-6700
M- F 7:00 – 6:00

CAMDEN (Ouachita 52-01) (4)
Rita Long, Agent
135 Jackson Street, 71701
(870) 836-4171, Fax 836-7407

CAVE CITY (Sharp 68-01) (1)
Sabrina Vaughn, Agent
City Hall, 107 Spring, 72521
(870) 283-5849
Thurs. 8:30 - 4:00

CHARLESTON (Franklin 24-01) (1)
Shelia Robertson, Agent
Franklin Co. Courthouse,
607 East Main, 72933
(479) 965-2220, Fax 965-1213
M-F 8:00 – 4:30

CLARENDON (Monroe 48-02) (1)
Charlotte Ewan, Agent
603 Madison Street, 72029-2424
(870) 747-3796, Fax 747-1318

CLARKSVILLE (Johnson 36-01) (3)
Elizabeth Parks, Agent
1140 South Rogers, 72830
(479) 754-2149, Fax 705-8414

CLINTON (Van Buren 71-01) (3)
Amanda Green, Agent
1400 Hwy. 65 South, 72031
(501) 745-6176, Fax 745-2705

CONWAY (Faulkner 23-01) (11)
Sonja Jaco, Agent
2455 Washington Ave., Suite 105, 72032
(501) 329-2601, Fax 327-1676
M-F 7:00 – 6:00

CORNING (Clay 11-01) (2)
Brandy Eldridge, Agent
800 Southwest 2nd Street, 72422
(870) 857-3221, Fax 857-5325

CROSSETT (Ashley 02-02) (4)
Latanye Lewis, Agent
209 Main Street, 71635
(870) 364-6744, Fax 364-9617

DANVILLE (Yell 75-02) (2)
Sharon Pyle, Agent
710 Boston Plaza
P.O. Box 276, 72833
(479) 495-2841, 495-2842, Fax 495-5501

DARDANELLE (Yell 75-01) (2)
Sherry Allred, Agent
Yell County Courthouse
106 Union Street, 72834
(479) 229-3657, Fax 229-5028

DECATUR (Benton 04-06) (1)
Agent
Municipal Hall, 310 Maple, 72722
(479) 752-3912, Wed. Only 8:00 – 4:00
SEND MAIL TO SILOAM SPRINGS

DEQUEEN (Sevier 67-01) (4)
Katy Irvan, Agent
110 West DeQueen Ave., 71832
(870) 584-3181, Fax 642-5113

DERMOTT (Chicot 09-03) (1)
Fredia McFadden, Agent
102 S. Arkansas, 71638-0634
(870) 538-5705, Fax 538-0271

DES ARC (Prairie 59-03) (1)
Stephanie Dobbins, Agent
207 Courthouse Square,
P.O. Box 923, 72040
(870) 256-4930, Fax 256-1055

DEWITT (Arkansas 01-01) (2)
Lindsey Palmer, Agent
142 Court Square, 72042
(870) 946-3421, Fax 946-1497

DIERKS (Howard 31-01) (1)
Lisa Sharp, Agent
205 West 3rd Street, 71833
(870) 286-2499, Wed. Only 8:30 – 4:00
SEND MAIL TO NASHVILLE

DOVER (Pope 58-01) (1)
Krishelle Teague, Agent
8904 Market Street, 72837
(479) 331-9734, Thurs. Only 8:00 – 3:30
SEND MAIL TO RUSSELLVILLE

DUMAS (Desha 21-01) (2)
S. Ann Walters, Agent
710 A Hwy. 65 South 71639
(870) 382-2950, Fax 382-6371

EARLE (Crittenden 18-06) (1)
Pamela Shelley Johnson, Agent
1018 2nd Street, 72331
(870) 792-8496, Fax 792-7844

EL DORADO (Union 70-02) (7)
Donna K. Washington, Agent
236 American Road, 71730
(870) 863-3862, Fax 862-8195
M-F 7:00 – 6:00

ENGLAND (Lonoke 43-03) (2)
Diane Rice, Agent
211 N. Allis, 72046
(501) 842-3886, Fax 842-0070

EUDORA (Chicot 09-04) (1)
Agent
239 S. Main, City Hall Bldg., 71640
(870) 355-4439, Fax 355-4003
Tues. & Wed. 9:00 -3:30

FAYETTEVILLE (Washington 72-01) (9)
Danielle Wilson, Agent
965 South Razorback Road, Suite 2, 72701
(479) 442-7691, 442-6611, Fax 587-9408
M-F 7:00 – 6:00

FORDYCE (Dallas 20-02) (2)
Lily Young, Agent
116 West 3rd, 71742
(870) 352-3588, Fax 352-2516

FORREST CITY (St. Francis 62-02) (4)
Sonia Thorne, Agent
2308 North Washington, 72335
(870) 633-2512, Fax 633-1359

FT. SMITH DT (Sebastian 66-01) (5)
Kellie Owens, Agent
616 Garrison Rm. 106, 72901
(479) 783-0279, 783-0270, Fax 785-5473

FT. SMITH EAST (Sebastian 66-03) (8)
Connie Oswald, Agent
6515 Phoenix Avenue, 72903
(479) 452-7031, 452-7032, Fax 452-7039
M-F 7:00 – 6:00

GLENWOOD (Pike 55-02) (2)
Sharion Pipkins, Agent
107 Mountain View Road, Suite 1, 71943
(870) 356-3105, Fax 356-3689

GRAVETTE (Benton 04-04) (2)
Gloria Salkill, Agent
901 First Avenue SW, Suite C
P. O. Box 502, 72736
(479) 787-5912, Fax 787-1009
M-F – 8:00 - 4:30 p.m.

GREENBRIER (Faulkner 23-02) (2)
Sherry Garrett, Agent
110B South Broadview, P.O. Box 243, 72058
(501) 679-2117, Fax 679-6935
M-F 8:00 – 4:30

GREEN FOREST (Carroll 08-01) (1)
Agent
102 North 2nd Street, 72638
(870) 438-6559, Thurs. & Fri. 8:30 – 4:30
SEND MAIL TO HARRISON

GREENWOOD (Sebastian 66-02) (4)
Regina Cantrell, Agent
804B West Denver, 72936
(479) 996-2143, Fax 996-4771

HAMBURG (Ashley 02-03) (2)
Lela Campbell, Agent
205 East Jefferson, Box 16, 71646
(870) 853-5418, Fax 853-4751

HAMPTON (Calhoun 07-01) (1)
Agent
218 Main Street,
P.O. Box 104, 71744-0104
(870) 798-2588, Fax 798-4772

HARRISBURG (Poinsett 56-01) (2)
Georgia Owens, Agent
408 North Illinois, 72432-0477
(870) 578-5911, Fax 578-5757

HARRISON (Boone 05-01) (6)
Kathy Cikanek, Agent
1020 Goblin Dr., Suites A&B, 72601-3609
(870) 741-5501 741-3066, Fax 741-9683
M-F 7:00 – 6:00

HAZEN (Prairie 59-02) (1)
Gail Qualls, Agent
109 N. Hazen Avenue, P.O. Box 288
72064-0288
(870) 255-3156, Fax 255-3058

HEBER SPRINGS (Cleburne 12-01) (4)
Kela Stevenson, Agent
113 West Clinton, 72543-3816
(501) 362-2469, Fax 362-6766

HELENA-WEST HELENA (Phillips 54-01) (5)
Barbara Hayes, Agent
429 Cherry Street, 72342-3336
(870) 338-8171, Fax 338-7218

HOPE (Hempstead 29-01) (4)
Margie Dooley, Agent
116 East 12th,
P.O. Box 1645, 71801-5045
(870) 777-3131, Fax 777-4894

HORSESHOE BEND (Izard 33-01) (1)
Sabrina Vaughn, Agent
704 West Commerce, 72512
(870) 670-4554
Wednesdays (Only) 7:30 -4:00

HOT SPRINGS AP (Garland 26-04) (6)
Pamela Lafferty, Agent
1609 Albert Pike, Suite U, 71913-4713
(501) 624-0832, Fax 622-6662
Mon. – Fri. 7:00 – 6:00

HOT SPRINGS DT (Garland 26-02) (7)
Mary Robbins, Agent
200 Woodbine, Room 142, 71901
(501) 624-4472, Fax 624-2529

HOT SPRINGS VLG. (Garland 26-01) (3)
Mona Tillery, Agent
4656 N. Hwy. 7, Suites R&S, 71909
(501) 984-5488, Fax 984-5495

HUGHES (St. Francis 92-04) (1)
Debbie Shirley, Agent
309 South Broadway, 72348
(870) 339-3196, Fax 339-3487

HUNTSVILLE (Madison 44-01) (3)
Agent
705 A North Parrott Drive
P.O. Box 156, 72740-0156
(479) 738-6516, Fax 738-1737

IMBODEN (Lawrence 38-02) (1)
Kelli O'Neal, Agent
106 East 2nd Street, 72434
(870) 869-2218, Fax 869-0048
Tues., Wed. and Thurs. 8:30 – 4:30
SEND MAIL TO WALNUT RIDGE

JACKSONVILLE (Pulaski 60-02) (7)
Carla Turley, Agent
#4 Crestview Plaza, 72076-4396
(501) 982-5942, Fax 985-3520

JASPER (Newton 51-01) (2)
Alisha Martin, Agent
Farmers Coop. Building
108 N. Spring Street, P.O. Box 121, 72641-0121
(870) 446-2215, Fax 446-2771

JONESBORO (Craighead 16-01) (13)
Robin Muir, Agent
206 Southwest Drive, Suite B, 72401
(870) 932-2716, Fax 932-0667
M-F 7:00 – 6:00

LAKE CITY (Craighead 16-02) (2)
Jamie Wallace, Agent
Courthouse, 107 Cobean, P.O. Box 654, 72437
(870) 237-4421, Fax 237-4221

LAKE VILLAGE (Chicot 09-01) (2)
Phyllis Reginelli, Agent
527 Hwy. 82 & 65 S, 71653-1311
(870) 265-2320, Fax 265-3927

LEACHVILLE (Mississippi 47-04) (1)
Lisa Smith, Agent
City Hall, 116 South Main Street
P.O. Box 6, 72438
(870) 539-2501, Fax 539-2490
Thurs. and Fri. 8:00 – 4:00

LEAD HILL (Boone 05-03) (1)
Agent
City Hall, Hwy. 14 West, 72644
(870) 436-4093, Wed. Only 8:30 – 4:00
SEND MAIL TO HARRISON

LEWISVILLE (LaFayette 37-02) (2)
Donna McDowell, Agent
119 Chestnut Street, P.O. Box 418, 71845-0418
(870) 921-4730, Fax 921-4740

LINCOLN (Washington 72-02) (2)
Pamela Pyeatte, Agent
215 South Main Street, 72744
(479) 824-3110, Fax 824-3697
M-F 8:00 – 4:30

LITTLE ROCK CNTRL (Pulaski 99-94)(11)
Sondra Thomas, Agent
1900 West 7th Street, Room 1030, 72201
(501) 682-7076, Fax 682-7448

L. ROCK RAGLAND (Pulaski 99-71) (13)
Kelly Riggs, Agent
1900 West 7th Street, Room 1040, 72201
(501) 682-4663, Fax 683-1699

LITTLE ROCK SW (Pulaski 60-05) (8)
Carolyn Daniel, Agent
#3 State Police Plaza Drive, Suite 300, 72209-4823
(501) 682-0410, Fax 682-0411
M-F 7:00 – 6:00

LITTLE ROCK WEST (Pulaski 60-03)(11)
Cynthia Henman, Agent
9108 N. Rodney Parham, Suite 107, 72205
(501) 324-9243, Fax 324-9248
M-F 7:00 -6:00

LONOKE (Lonoke 43-01) 43)
Gerry Ray, Agent
105 Jefferson, 72086-3123
(501) 676-2407, Fax 676-7395

MAGNOLIA (Columbia 14-02) (4)
Gloria Counter, Agent
101 South Court Square, 71753-0706
(870) 234-3560, Fax 234-7360

MALVERN (Hot Spring 30-01) (4)
Burt Ashburn, Agent
129 West Page, 72104
(501) 332-3501, Fax 467-3333

MAMMOTH SPRING (Fulton 25-01) (1)
Sabrina Vaughn, Agent
City Hall Building, 415 Main Street, 72554
(870) 625-3204, Fax 625-7566
Tues. Only 9:00 – 4:30

MANILA (Mississippi 47-05) (1)
Lisa Smith, Agent
214 North Baltimore, P.O. Box 661, 72442
(870) 561-4470, Fax 561-4438
Mon. Tues. & Wed. 8:00 – 4:30

MARIANNA (Lee 39-01) (2)
Mary Palmer, Agent
29 North Poplar, 72360-2318
(870) 295-3252, Fax 295-2552

MARION (Crittenden 18-03) (3)
Ronda Woods, Agent
County Office Building
2921 State Hwy, 77 South, Suite 17, 72364
(870) 739-4494, Fax 739-1299

MARKED TREE (Poinsett 56-03) (2)
Linda Washington, Agent
98 Highway 63B, Suite C, 72365
(870) 358-2498, Fax 358-2499

MARSHALL (Searcy 65-01) (2)
Vickie Fountain, Agent
213 Hwy. 27 South
P.O. Box 111, 72650-0111
(870) 448-2485, Fax 448-2226

MAUMELLE (Pulaski 60-08) (2)
LaConstance Hune, Agent
550 Edgewood, Suite 580, 72113
(501) 851-7688, Fax 851-9507

MCGEHEE (Desha 21-03) (2)
Linda Merritt, Agent
Municipal Building, Room 102
901 Holly Street, P.O. Box 1283, 71654-1283
(870) 222-3422, Fax 222-5633

MELBOURNE (Izard 33-02) (3)
Anna Hopper, Agent
41 South Spring Street, P.O. Box 451, 72556-0451
(870) 368-4335, Fax 368-7528

MENA (Polk 57-01) (4)
Pamela Huff, Agent
601-TA Hwy. 71 N, 71953-3044
(479) 394-2333, Fax 394-3196

MONTICELLO (Drew 22-01) (4)
Eunice Watson, Agent
506 West Gaines, 71655-4723
(870) 367-5226, Fax 367-2146

MORRILTON (Conway 15-01) (3)
Rhonda Finton, Agent
207 North St. Joseph, 72110-2917
(501) 354-2088, Fax 208-5817

MOUNTAINBURG (Crawford 17-01) (1)
Agent
Municipal Bldg, 101 Hwy. 71 NW, 72946
(479) 369-2791, Wed. Only 8:00 – 2:30
SEND MAIL TO VAN BUREN

MOUNTAIN HOME (Baxter 03-01) (6)
Suzanne Vaughn, Agent
200 East 8th, Suite 102, 72653-4412
(870) 425-2571, Fax 425-8125

MOUNTAIN VIEW (Stone 69-01) (3)
Pamela Henderson, Agent
205 West Jefferson,
P.O. Box 365, 72560-0365
(870) 269-3436, Fax 269-2338

MOUNT IDA (Montgomery 49-01) (2)
Nicki Jones, Agent
127 South West Street,
P. O. Box 912, 71957-0912
(870) 867-3813, Fax 867-5158

MURFREESBORO (Pike 55-01) (2)
Dale Humphry, Agent
131 Kelly Street,
P. O. Box 165, 71958
(870) 285-3590, Fax 285-2844

NASHVILLE (Howard 31-02) (3)
Rebecca Ray, Agent
421 North Main Street, Room 3
71852-2008
(870) 845-7514, Fax 845-7516

NEWPORT (Jackson 34-01) (3)
Darlene Madden, Agent
112 Main, 72112-3232
(870) 523-3861, Fax 523-2228

NORTH LITTLE ROCK (Pulaski 60-01)(4)
Marion Berry, Agent
2655A Pike Avenue
Pike Plaza Shopping Center, 72114-1926
(501) 324-9246, Fax 324-9236

OSCEOLA (Mississippi 47-03) (3)
Brenda Lee, Agent
550 South Ermen Lane, 72370
(870) 563-2211, Fax 563-4964

OZARK (Franklin 24-02) (3)
Cynthia Rowe, Agent
221 West Main, 72949-3231
(479) 667-3765, Fax 667-5985

PARAGOULD (Greene 28-01) (7)
Kathy Vowell, Agent
Greene County Courthouse, 320 West Court Street,
Room 100, Box 100 A & 100 B, 72450
(870) 236-8755, Fax 335-9353

PARIS (Logan 42-02) (2)
Anita Forst, Agent
25 South 10th Street, 72855-4005
(479) 963-3111, Fax 963-9131

PERRYVILLE (Perry 53-01) (2)
Trinity Grimstead, Agent
410 North Fourche, P. O. Box 96, 72126
(501) 889-2665, Fax 889-2952

PIGGOTT (Clay 11-04) (2)
Penny Hill, Agent
Courthouse, 151 South 2nd Street,
72454-2632
(870) 598-3310, Fax 598-2947

PINE BLUFF COMPLX (Jefferson 35-01) (7)
Marion Martin-Williams, Agent
2801 Olive Street, Space 7C, 71603
(870) 535-4564, Fax 534-6741
M-F 7:00 – 6:00

POCAHONTAS (Randolph 61-01) (3)
Melissa Vandergriff, Agent
Courthouse, 107 West Broadway
72455-3406
(870) 892-3147, Fax 892-4045

PRESCOTT (Nevada 50-01) (3)
Angie Faulkner, Agent
147 East 2nd Street North, 71857
(870) 887-2013, Fax 887-0060

RECTOR (Clay 11-03) (1)
Sarah Pruett Miner, Agent
740 East 9th, 72461
(870) 595-3108, Fax 595-1618

RISON (Cleveland 13-01) (2)
Kristi White, Agent
120 Sycamore, P. O. Box 292, 71665-0292
(870) 325-6471, Fax 325-9962

ROGERS (Benton 04-08) (8)
Tina Magnuson, Agent
1428 West Walnut Street, 72756
(479) 636-1095, Fax 636-1096

RUSSELLVILLE (Pope 58-02) (9)
Krishelle Teague, Agent
105 South Rochester, 72801-5960
(479) 968-1526, Fax 968-8079
M-F 7:00 – 6:00

SALEM (Fulton 25-02) (2)
Anna Humphries, Agent
118 Locust Street, 72576-0625
P. O. Box 625
(870)895-3354, Fax 895-4195

SEARCY (White 73-01) (7)
Deborah Reed, Agent
402 West Vine Street, 72143-4141
(501)268-2802, Fax 305-3518

SHERIDAN (Grant 27-01) (3)
Jackie Cotton, Agent
Dorey Building, 202 South Oak, 72150-2335
(870) 942-3522, Fax 942-1933

SHERWOOD (Pulaski 60-40) (9)
Jasmine Norwood, Agent
6929 J.F.K., Space 22,
Indian Hills Shopping Center, 72116-5331
(501) 835-6904, Fax 835-7336
M-F 7:00-6:00

SILOAM SPRINGS (Benton 04-03) (4)
Norene Drinkwater, Agent
707 S. Lincoln, Suite A, 72761
(479) 524-3182, Fax 524-8366

SMACKOVER (Union 70-01) (1)
Johnnie Johnson, Agent
807 Broadway Street , 71762
(870) 725-3334, Fax 725-2459

SPRINGDALE (Washington 72-03) (11)
Karen Davis, Agent
3159 Springdale Avenue, 72762-5187
P.O. Box 8320, 72766-8320
(479) 751-4498, Fax 751-4882
M-F 7:00 – 6:00

STAR CITY (Lincoln 40-02) (2)
James Glenn Haley, Agent
106 Victory, 71667-5706
(870) 628-4578, Fax 628-4646

STEPHENS (Ouachita 52-02) (1)
Rita Long, Agent
104 N. 1st Street – City Hall, 71764
(870) 786-5801
Tues. & Wed. 9:00 – 4:00
SEND MAIL TO CAMDEN

STUTTGART (Arkansas 01-02) (3)
Maud London, Agent
205 W. Michigan, 72160-3119
(870) 673-2866, Fax 673-4239

TEXARKANA (Miller 46-01) (8)
Cynthia Booth, Agent
801 East 4th Street, 71854-6049
(870) 773-3871, Fax 773-3834

TRUMANN (Poinsett 56-02) (2)
Anna Looney, Agent
809 West Main Street, Suite B, 72472
(870) 483-7227, Fax 483-7700

VAN BUREN (Crawford 17-02) (7)
Lou Jean Melton, Agent
221 Main Street, 72956-5796
(479) 474-5079, Fax 474-9074

VILONIA (Faulkner 23-03) (1)

Agent

118 Bise Drive, 72173,

(501) 796-8211

Tues. & Thurs. 8:00 – 4:30

SEND MAIL TO CONWAY

WALDRON (Scott 64-01) (2)

Patty Ridenhour, Agent

190 West 1st Street, Room 11, 72958

(479) 637-3661, Fax 637-0539

WALNUT RIDGE (Lawrence 38-01) (4)

Debbie Foley, Agent

Courthouse, Room 3, 315 W. Main Street,

72476-2485

(870) 886-2301, Fax 886-2462

WARREN (Bradley 06-01) (3)

Johnnie Mangum, Agent

410-B South Martin, 71671-3204

(870) 226-3223, Fax 226-9110

WEST FORK (Washington 72-05) (1)

Agent

222 Webber Street, 72774

(479) 839-2479, Wed. Only 8:00 – 4:30

SEND MAIL TO FAYETTEVILLE

WEST MEMPHIS (Crittenden 18-02) (6)

Kathey Pitts, Agent

250 Shopping Way, Suite A, 72301-1750

(870) 735-1122, Fax 735-1147

M-F 7:00 – 6:00

WHITE HALL (Jefferson 35-02) (6)

Brenda Delahunt, Agent

8512 Dollarway, 71602-2848

(870) 247-5565, Fax 247-4122

M-F 7:00 – 6:00

WYNNE (Cross 19-01) (3)

Mary Lou Parkman, Agent

Courthouse, Room 7

705 East Union, 72396-3039

(870) 238-2591, Fax 238-1177

YELLVILLE (Marion 45-01) (3)

Debbie Parnell, Agent

219 East Old Main, 72687

(870) 449-6535, Fax 449-5154

Revised – June 22, 2015

STATE REVENUE OFFICE ADMINISTRATION

397322
NW Dist.
 Loretta Turner
 District Manager
 965 S Razorback RD Ste. 1
 Fayetteville 72701-7329
 Off #442-0530
 442-0532
 FAX #444-6850
 Cell 479-856-1988

397384
NE Dist.
 Amy Brown
 District Manager
 206 Southwest Dr C.
 Jonesboro 72401
 Off #932-6347
 FAX #932-1759
 Cell 870-897-5992

397452
SE Dist.
 Janice Lung
 District Manager
 805 N. Maple
 Stuttgart 72160
 Off #673-7453
 FAX #673-4636
 Cell 870-659-8037
 870-739-3649 (Marion)

397526
SW Dist.
 M.K. Booie Williams
 District Manager
 147 E. 2nd Street
 Prescott 71857
 Off #887-1505 or 1506
 FAX #887-2643
 Cell 870-818-1157

397578
CE Dist.
 Tara K. Smith
 District Manager
 9108 N. Rodney Parham Rd.,
 Suite #301, L.R. 72205
 Off #324-9052
 324-9053
 FAX #324-9081
 Cell 501-313-8954

- ~~02 Atkins 58-03~~
- 03 Benton Co. Cen. 04-01
- 04 Berryville 08-02
- 05 Booneville 42-01
- 06 Charleston 24-01
- 07 Clarksville 36-01
- 08 Danville 75-02
- 09 Dardanelle 75-01
- ~~10 Decatur 04-06~~
- ~~11 Dover 58-01~~
- 12 Fayetteville 72-01
- 13 Fort Smith 66-01
- 14 Fort Smith East 66-03
- 15 Gravette 04-04
- ~~16 Green Forrest 08-01~~
- 17 Greenwood 66-02
- 18 Harrison 05-01
- 19 Huntsville 44-01
- 20 Jasper 51-01
- ~~21 Lead Hill 05-03~~
- 22 Lincoln 72-02
- ~~23 Mountainburg 17-01~~
- 24 Ozark 24-02
- 25 Paris 42-02
- 26 Rogers 04-08
- 27 Russellville 58-02
- 28 Siloam Springs 04-03
- 29 Springdale 72-03
- 30 Van Buren 17-02
- 31 Waldron 64-01
- ~~32 West Fork 72-05~~

- 02 Ash Flat 68-03
- 03 Augusta 74-01
- 04 Batesville 32-01
- 05 Blytheville 47-01
- ~~06 Cave City 68-01~~
- 07 Clinton 71-01
- 08 Coming 11-01
- 09 Harrisburg 56-01
- 10 Heber Springs 12-01
- ~~11 Horseshoe Bend 33-01~~
- ~~12 Imboden 38-02~~
- 13 Jonesboro 16-01
- 14 Lake City 16-02
- ~~15 Leachville 47-04~~
- ~~16 Mammoth Spring 25-01~~
- ~~17 Manila 47-05~~
- 18 Marked Tree 56-03
- 19 Marshall 65-01
- 20 Melbourne 33-02
- 21 Mountain Home 03-01
- 22 Mountain View 69-01
- 23 Newport 34-01
- 24 Osceola 47-03
- 25 Paragould 28-01
- 26 Piggott 11-04
- 27 Pochahontas 61-01
- 28 Rector 11-03
- 29 Salem 25-02
- 30 Trumann 56-02
- 31 Walnut Ridge 38-01
- 32 Wynne 19-01
- 33 Yellville 45-01

- 02 No office exist
- 03 Brinkley 48-01
- 04 Cabot 43-02
- 05 Clarendon 48-02
- 06 Crossett 02-02
- 07 Dermott 09-03
- 08 Des Arc 59-03
- 09 Dewitt 01-01
- 10 Dumas 21-01
- 11 Earle 18-06
- 12 England 43-03
- ~~13 Eudora 09-04~~
- 14 Forrest City 62-02
- 15 Hamburg 02-03
- 16 Hazen 59-02
- 17 Helena-West Helena 54-01
- 18 Hughes 62-04
- 19 Lake Village 09-01
- 20 Lonoke 43-01
- 21 Marianna 39-01
- 22 Marion 18-03
- 23 McGehee 21-03
- 24 Monticello 22-01
- 25 Pine Bluff 35-01
- 26 Rison 13-01
- 27 Sheridan 27-01
- 28 Star City 40-02
- 29 Stuttgart 01-02
- 30 Warren 06-01
- 31 White Hall 35-02
- 32 West Memphis 18-02

- 02 Arkadelphia 10-02
- 03 Ashdown 41-02
- 04 Camden 52-01
- 05 DeQueen 67-01
- ~~06 Dierks 01-01~~
- 07 El Dorado 70-02
- 08 Fordyce 20-02
- 09 Glenwood 55-02
- 10 Hampton 07-01
- 11 Hope 29-01
- 12 Hot Springs AP 26-04
- 13 Hot Springs DT 26-02
- 14 Hot Springs VG 26-01
- 15 Lewisville 37-02
- 16 Magnolia 14-02
- 17 Malvern 30-01
- 18 Mena 57-01
- 19 Mount Ida 49-01
- 20 Murfreesboro 55-01
- 21 Nashville 31-02
- 22 Prescott 50-01
- 23 Smackover 70-01
- ~~24 Stephens 52-02~~
- 25 Texarkana 46-01

- 02 Bald Knob 73-02
- 03 Beebe 73-03
- 04 Benton 63-01
- 05 Bryant 63-02
- 06 Conway 23-01
- 07 Greenbrier 23-02
- 08 Jacksonville 60-02
- 09 L R Central Ragland 99-71
- 10 L R Cen Rev Special Lic 99-94
- 11 L R Southwest 60-05
- 12 L R West 60-03
- 13 Maumelle 60-08
- 14 Morrilton 15-01
- 15 North Little Rock 60-01
- 16 Perryville 53-01
- 17 Searcy 73-01
- 18 Sherwood 60-04
- 19 Vilonia 23-03

Assistant Mgr.
 Karen Hopkins (479) 530-6718

Assistant Mgr.
 Wendy Goodon (870) 275-5233

Assistant Mgr. (870) 659-7027
 Tonya Highfill (870) 673-4636 Fax

Assistant Dist. Mgr.
 Sylvia Humphry (870) 210-0376

Assistant Mgr.
 Sondra Thomas (501) 231-9754

