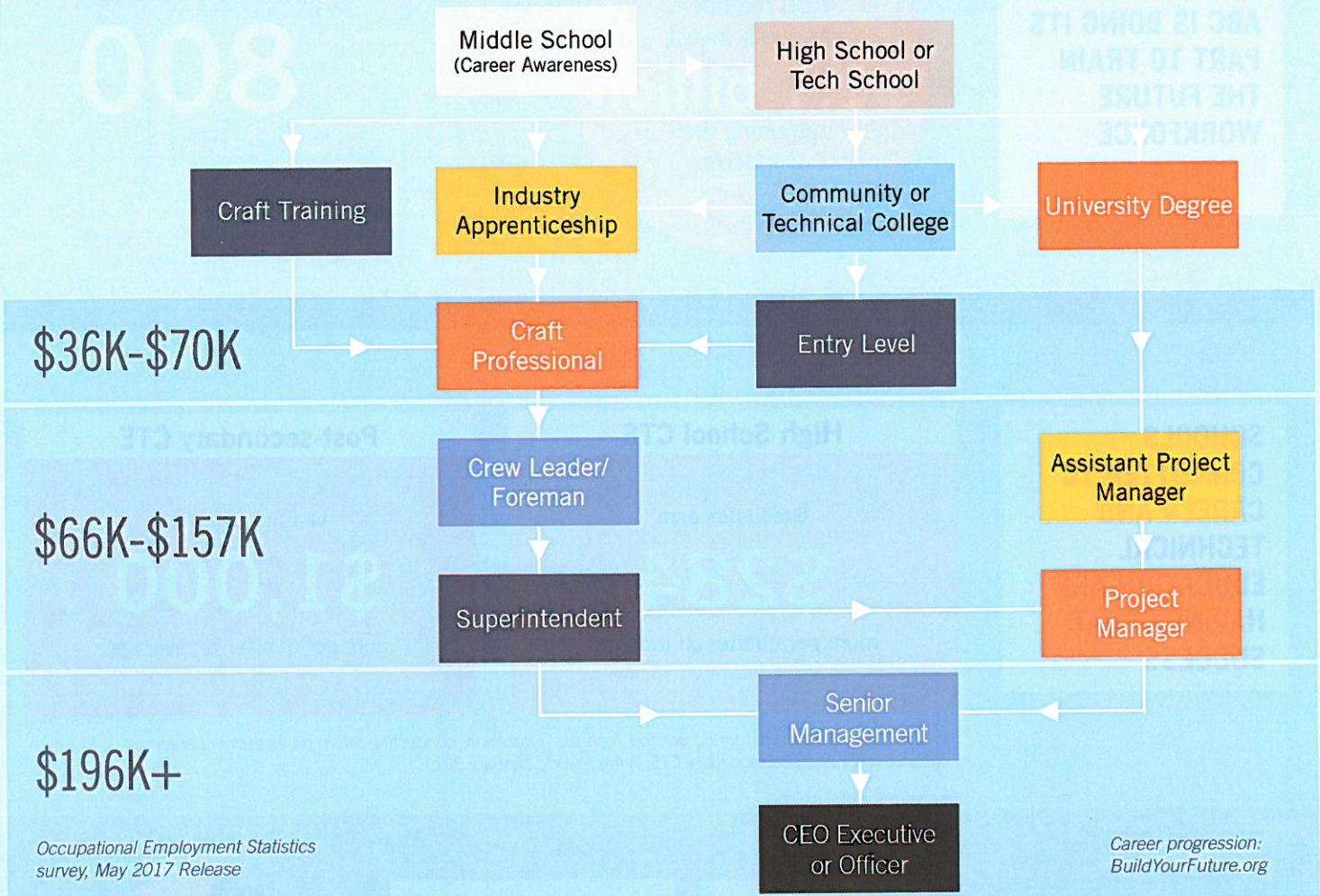


Construction is a great career path with limitless possibilities.



The construction industry is rapidly growing...

Employment will grow at an annual rate of

2.6%

ABC's 2017 Construction Economic Forecast Report

More than **70%** of ABC members plan to increase staffing levels over the next six months.

ABC Construction Confidence Index

For the fourth consecutive year, **skilled trade workers** are reported to be the hardest positions for companies to fill.

Manpower Group 2016 Talent Shortage Survey

Average wages for construction professionals are

18%

higher than the typical worker.

U.S. Department of Labor's 2017 Occupational Outlook Handbook

5X

more than five times as fast as the average of all industries.

U.S. Bureau of Economic Analysis

workforce.abc.org



ABC IS DOING ITS PART TO TRAIN THE FUTURE WORKFORCE

ABC members annually invest
\$1.1 billion
in training their workforce

ABC chapters and training affiliates offer more than
800
apprenticeship, craft, safety and management training programs

SCHOOLS COMMITTED TO CAREER AND TECHNICAL EDUCATION ARE HAVING GREAT SUCCESS

High School CTE

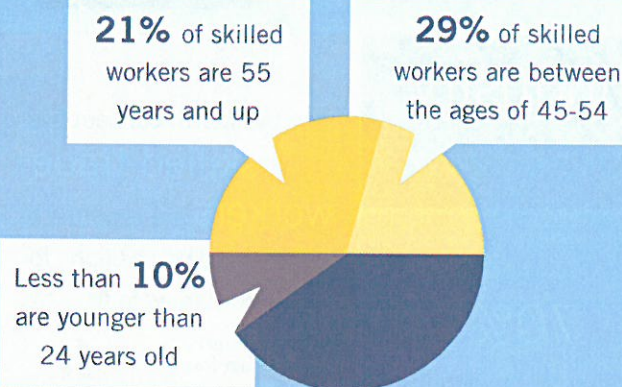
Graduates earn
\$284
more per quarter on average.

Post-secondary CTE

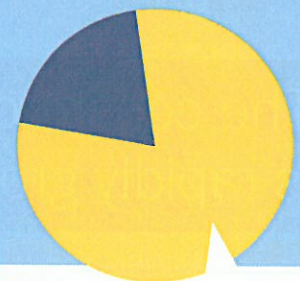
Graduates earn
\$1,000
more per quarter on average.

National Research Center for Career and Technical Education, conducting return on investment analyses for secondary and postsecondary CTE: A framework, January 2011

AMERICA IS STILL FACING A HUGE SHORTAGE OF SKILLED CONSTRUCTION CRAFT PROFESSIONALS



U.S. Bureau of Labor Statistics



FMI study of ABC member firms

500,000 There are half a million jobs ready to be filled in construction today

ABC, U.S. Bureau of Labor Statistics and Markstein Advisors

workforce.abc.org

