

JOINT EDUCATION COMMITTEE 19Jul16

Career and Technical Education (CTE) and Secondary Technical Centers

ARKANSAS DEPT. OF CAREER EDUCATION (ACE)

Director – Charisse Childers, Ph.D.

Division of Career and Technical Education (CTE)

Deputy Director – Kathi Turner

Office of Skills Development (OSD)

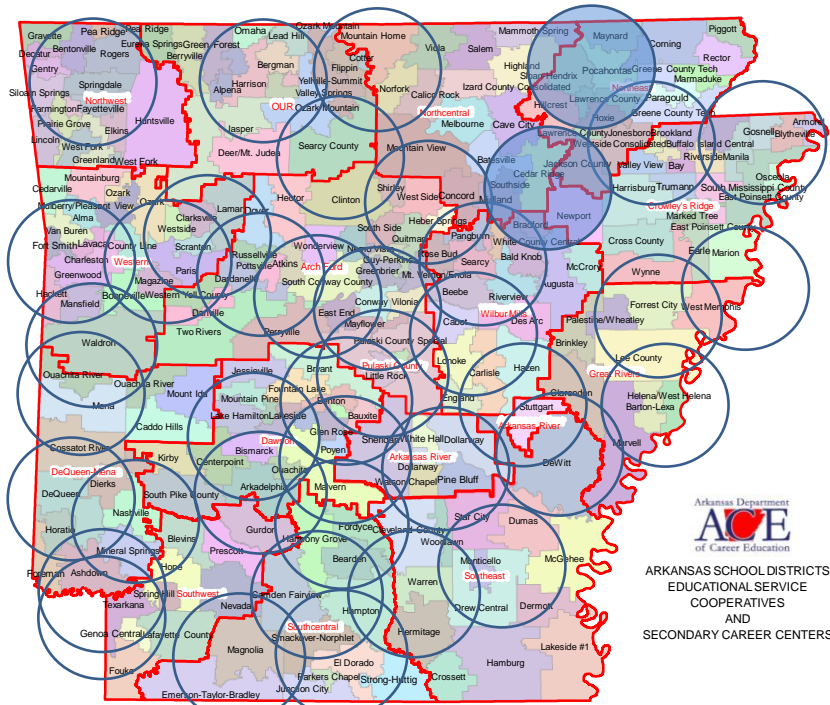
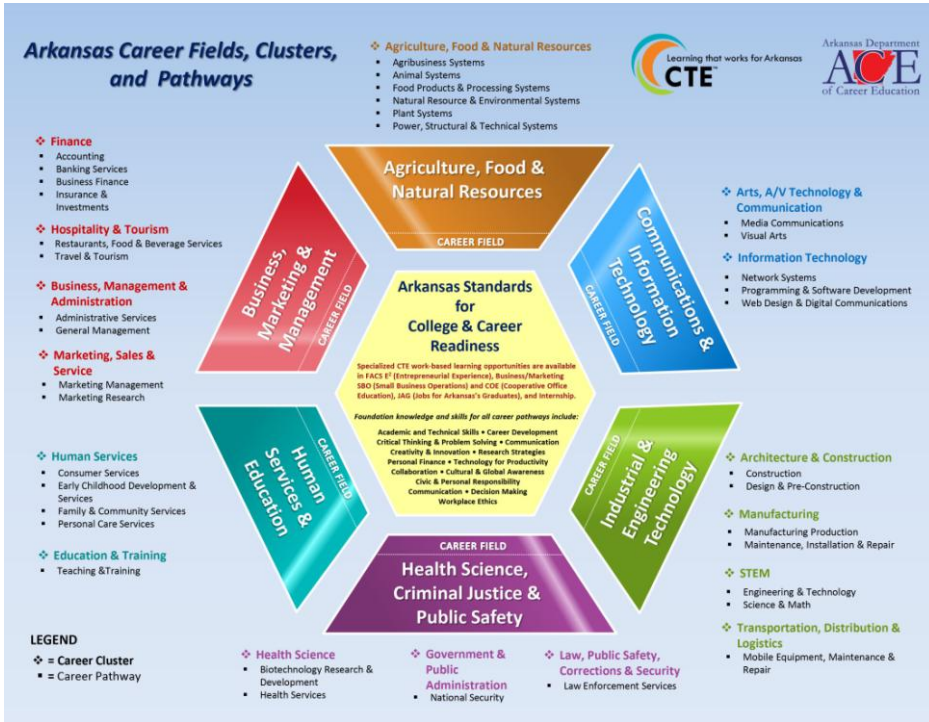
Deputy Director – Brian Rogers, J.D.



CTE & Secondary Technical Centers

- Names:** Secondary Vocational Area Centers (legislated), Secondary Technical Centers (Policies and Procedures), Secondary Career & Technical Centers, Secondary Centers, Career Centers, Secondary Area Career Centers, SATC.
- Documentation:**
 - Act 59
 - Special Policies and Procedures for Secondary Technical Centers effective December 3, 2013
 - Program Policies and Procedures for Career and Technical Education effective March 15, 2016





Arkansas Department of Career Education
ACE
 of Career Education

ARKANSAS SCHOOL DISTRICTS
 EDUCATIONAL SERVICE COOPERATIVES
 AND
 SECONDARY CAREER CENTERS

CTE & Secondary Technical Centers

Secondary Technical Centers (including satellites), then and now:

	2004	2016
Sites	24	50
Funding	20 MM	20 MM
Total per FTE* Funding	7000	5800**

*FTE = Full Time Equivalent = 6 hours per day.

** Under the current Secondary Technical Center funding model, a disincentive to increasing enrollment exists because per FTE funding decreases (17% since 2004) as enrollment increases.

CTE & Secondary Technical Centers

Themes and Trends

- In-depth review ongoing since Fall 2015
- Align programs of study with local/regional employer and job market demands
- Increase student enrollment in programs aligned with regional employer demands and highest economic impact
- Current funding model incentives:
 - Total funding increases based only on enrollment (programs selected based on popularity with students)
 - Funding per FTE decreases as enrollment increases (down 17% since 2004)
- Develop and phase-in model incentivized by job market and economic outcomes

CTE & Secondary Technical Centers

Highlights by the numbers, 9th through 12th grades, FY14-15

- 142,000 = total students
- 73% (103,000) = total CTE students (taking at least 1 CTE course)
- 9,500 (7%) = students attending Secondary Technical Centers
- 0% increase in Secondary Technical Center funding since 2004
- 100% increase in Secondary Technical Center sites since 2004
- 25% = increased likelihood a low income student will finish high school if taking three or more courses in same program of study*
- 21% = increased likelihood a student will finish high school if concentrating in a single CTE program of study*

*Data from 2016 Fordham Institute study



CTE & Secondary Technical Centers

Highlights by the numbers, 9th through 12th grades, FY14-15

- 114% of Secondary Technical Center funding expended
- \$3,700,000 = statewide cumulative carryover / surplus of funds among Secondary Technical Centers (per Center range: \$1.3MM to -\$800K)
- 15% (21,000) = students enrolled in Health Science CTE
- 9% (12,500) = students enrolled in skilled trade CTE
- 6% (8,775) = students enrolled in STEM & computer science CTE
 - Excludes Digital Communications (Business Dept)
- Secondary Technical Center Sponsoring Institutions & LEAs
 - 16 community colleges
 - 8 high schools
 - 2 Education Service Cooperatives
 - 2 Technical Institutes



CTE & Secondary Technical Centers

QUESTIONS AND DISCUSSION

ARKANSAS DEPT. OF CAREER EDUCATION (ACE)

Director – Charisse Childers, Ph.D.

Division of Career and Technical Education (682-1040)

Deputy Director – Kathi Turner (Katherine.Turner@arkansas.gov)

Office of Skills Development (683-1152)

Deputy Director – Brian Rogers, J.D. (Robert.Rogers@arkansas.gov)

