


Bureau of Legislative Research
 Policy Analysis & Research Section

Education Accountability

August 22, 2017



2018 Adequacy





Bureau of Legislative Research
 Policy Analysis & Research Section

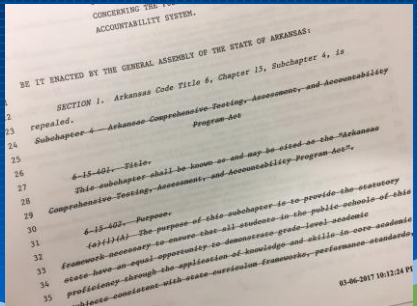
ACTAAP: Repeal and Replace

August 22, 2017



2018 Adequacy

ACTAAP: Repealed



3





Bureau of Legislative Research
 Policy Analysis & Research Section

ACTAAP: Reauthorization

August 22, 2017




2018 Adequacy

Act 930 of 2017

Arkansas Educational Support and Accountability Act

ACTAAP: Arkansas Comprehensive Testing, Assessment and Accountability Program



3 Big Changes in State System

1. State support to school districts (not schools)
2. Labels for levels of support (not schools)
3. Student-focused education model

6

Accountability History in AR

1983



Minimum Competency Test
(Goal: 85% per school)

7

Accountability History in AR

Act 999 of 1999

Arkansas Comprehensive Testing, Assessment and Accountability Act

8

Accountability History in AR

2002



Arkansas Supreme Court
Lake View Decision

The elements of ACTAAP are the "paramount initiatives by the State to correct the course of academic deficiencies in Arkansas." *Arkansas Supreme Court, 2002*

9

Act 930 of 2017

Arkansas Educational Support and Accountability Act



Academic Standards

Arkansas Academic Standards

Computer
Science

English
Language
Arts

Fine
Arts

Foreign
Language

Library
Media
Services

Math

11

Educators

Excellent Educator:

- License
- In Area
- Experienced
- Effective



12

Student-focused Education

Arkansas Department of Education Vision Statement

“The Arkansas Department of Education is transforming Arkansas to lead the nation in student-focused learning.”

13

Student-focused Education



14

Statewide Student Assessment System



15

Statewide Student Assessment System

Grade Bands	Assessment	Notes
3-8	ACT Aspire	These grades will continue to be tested with ACT Aspire.
9-10	ACT Aspire	Administering the ACT Aspire at grades 9-10 will allow for these scores to be used to determine growth of students in these upper grades.
Alternative Assessment for Cognitively Disabled Students	Multi-State Alternative Assessment (MSAA) 2017-18 Dynamic Learning Maps under construction for 2018 forward	This exam is used for the most severe special education students.
11	ACT: Optional for students	Potential Growth Measure, grades 10-11 % meeting Readiness Benchmark in 2 or more areas (potential Student Success indicator)
K-12	English Language Proficiency Assessment for 21 st Century (ELPA21)	To measure the percent of English learners meeting the readiness benchmark for English language proficiency

16

Student Performance Levels

Level 1 (In Need of Support)

Level 2 (Close)

Level 3 (Ready)

Level 4 (Exceeding)

17

ESSA School Index

Weighted Achievement

Student Growth
ACT Aspire + ELPA21

High School Graduation
4-year + 5-year

School Quality and Student Success (SQSS)

18

ESSA School Index

In essence, the School Quality and Student Success Indicator will provide a measure which combines engagement, access, readiness, completion, and success criteria. — *Arkansas Consolidated Plan for the Every Student Succeeds Act, 2017*

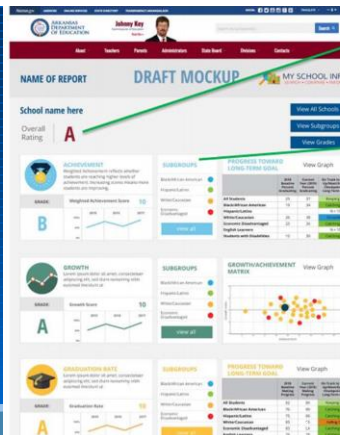
19

ESSA School Index

COMPONENT	WEIGHT OF INDICATOR	WEIGHT OF INDICATOR
	Grade Spans K-5 and 6-8	Grade Span 9-12
Weighted Achievement	35%	35%
Student Growth	50%	35%
Graduation Rate	NA	15% total
		10%
4-year adjusted cohort		5%
5-year adjusted cohort		
School Quality & Student Success	15%	15%

20

Dashboard



ESSA: School Level Accountability

Comprehensive Support and Improvement Schools

Targeted Support and Improvement Schools

Additional Targeted Support and Improvement Schools

22

Act 930: District Level Support

Level 1 -- General

Level 2 -- Collaborative

Level 3 -- Coordinated

Level 4 -- Directed

Level 5 -- Intensive

23

Support and Improvement

Act 930 Section 3(b)(1)(A)

(b)As part of the transition process: (1) Public school districts classified as being in academic distress and under state authority as of the effective date of this act shall: (A) Be classified by the State Board of Education as in need of Level 5 - Intensive support.

24

Support and Improvement



25

School Recognition Program



26

QUESTIONS

27