



“Child Care Aware of Northcentral Arkansas is a network of services dedicated to enhancing the quality and availability of childcare; advocating for children; and providing information, education, guidance and support to parents, providers, employers, and communities.”

Child Care Aware of NCAR is a regional child care resource and referral program providing referrals to parents seeking child care options through a database of licensed and registered child care facilities with vacancies meeting parents needs.

Child Care Aware of NCAR was the first nationally accredited and quality approved child care resource and referral program in Arkansas.

Child Care Aware of NCAR also strives to enhance the quality of child care through provider education and training; increase supply of care by helping to recruit providers to meet identified community needs; provide technical assistance to present and prospective providers with the objective of promoting quality; serve as a trend spotter through careful data collection and act as a Community Change Agent through advocacy and partnership building.

Counties Served



Program Services



Child Care Aware of Northcentral Arkansas provides services to families, employers, child care providers and those with an interest in joining the child care field.

Some of the services provided include:

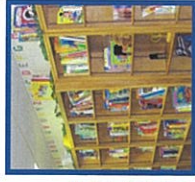
- ◆ A complete up-to-date listing of registered and licensed child care facilities.
- ◆ Information on how to choose a child care provider.
- ◆ A parent’s checklist for evaluating the quality of a child care program.
- ◆ Referrals to regulated child care facilities
- ◆ Free newborn “Baby Box” assembled for employees of corporate sponsors
- ◆ Newsletters
- ◆ A variety of child care training opportunities and conferences
- ◆ Consulting and technical assistance to centers and family child care homes.
- ◆ Annual Children’s Concerts
- ◆ Online referral requests at

www.ccana.org

Northcentral Arkansas Child Care Resource Center

White River Planning and Development District’s Early Childhood Programs, and other community partners are committed in the goal of enhancing the quality of child care in Northcentral Arkansas.

The development of the Northcentral Arkansas Child Care Resource Center and Lending Library is an important step to realizing that goal.



The Center opened in the Spring of 2001 to all registered or licensed child care facilities and early childhood students. All providers and early childhood students have the opportunity to check-out resource materials or use in-house equipment such as the copier, laminator, Ellison cutters and Cricut cutout machine. To date there are over 16,000 items available for checkout. These items include thematic units, flannel stories, music, books, teacher resources, and games available for ages 0-12.

Northcentral Arkansas Regional Fall Child Care Conference

WRPDD’s Early Childhood Programs work each year to expose child care providers to nationally known experts in early childhood by sponsoring an annual conference. The day long event provides training, opportunities to network and visit with others in the field, and view commercial exhibits. The next scheduled Annual Fall Child Care Conference will be held at the University of Arkansas Community College at Batesville (UACCB).