



STATE OF ARKANSAS  
BUREAU OF  
LEGISLATIVE RESEARCH

Marty Garrity, Director  
Kevin Anderson, Assistant Director  
for Fiscal Services  
Matthew Miller, Assistant Director  
for Legal Services  
Richard Wilson, Assistant Director  
for Research Services  
Tim Carlock, Assistant Director for IT

December 15, 2017

Senator Bill Sample, Co-Chair  
Representative Jim Dotson, Co-Chair  
Arkansas Legislative Council  
State Capitol, Room 315  
Little Rock, Arkansas 72201

**RE: Reporting Requirements – Local Food, Farms, and Jobs Act (Act 617 of 2017)**

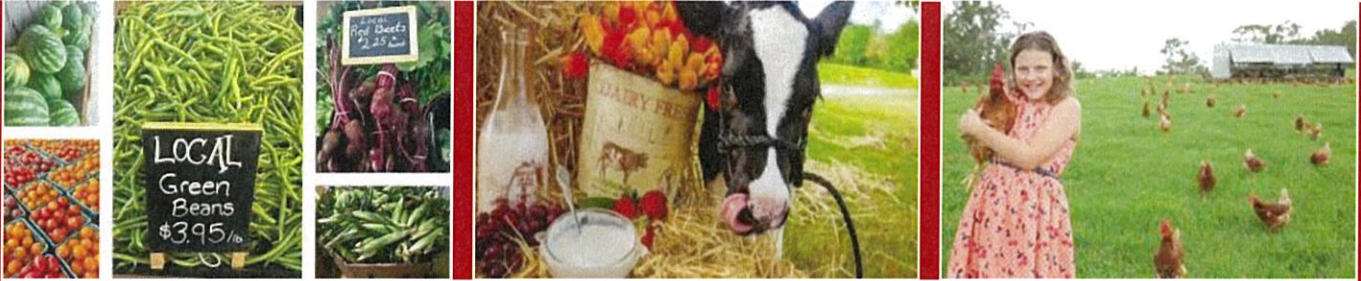
Senator Sample and Representative Dotson:

Act 617 of 2017, created the Local, Food, Farms, and Jobs Act. The intent of the legislation is to create, strengthen, and expand local farm and food economies throughout the state; and support and encourage the procurement of local farm or food products as a significant portion of all food product purchased by the state.

Pursuant to Act 617 of 2017, §15-4-3805, Reporting Requirements, attached is the required report.

Respectfully submitted,

  
Marty Garrity, Director  
Bureau of Legislative Research



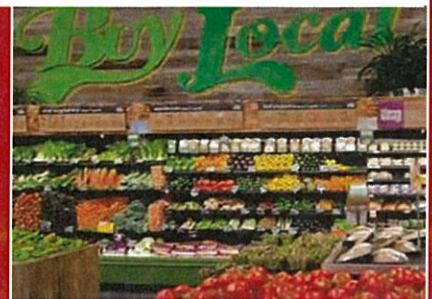
## **REPORT OF THE LOCAL FOOD, FARMS, AND JOBS ACT (Act 617 of 2017)**

Respectfully submitted to:

**The Honorable Asa Hutchinson, Governor  
Co-Chairs of the Arkansas Legislative Council**

**December 15, 2017**

**KEEP YOUR  
FRIENDS CLOSE  
AND YOUR  
FARMERS CLOSER.**  
LOCALLY GROWN FOOD FROM LOCALLY  
GROWN FARMERS.



## TABLE OF CONTENTS

<b>OVERVIEW OF LEGISLATION (Act 617 of 2017)</b> .....	<b>1</b>
Legislative Intent.....	1
Definitions.....	1
Procurement Goals .....	1
Reporting Requirements.....	2
Promotion .....	2
 <b>SUMMARY OF DATA</b> .....	 <b>3</b>
Agencies “Not” receiving at least \$25,000 used for the purchase of food or food products .....	4
Agencies “Receiving” at least \$25,000 used for the purchase of food or food products .....	7
 <b>APPENDICES</b> .....	 <b>8</b>
Appendix A – Reporting Results .....	9
Appendix B – Act 617 of 2017 .....	21

## OVERVIEW OF LEGISLATION

### Legislative Intent:

- To create, strengthen, and expand local farm and food economies through the state; and
- Support and encourage the procurement of local farm or food products as a significant portion of all food product purchased by the state.

### Definitions:

- “Agency” means an entity that:
  - Is funded in whole or part by the state; and
  - Receives at least twenty-five thousand dollars (\$25,000) a year for the purchase of food products
- “Agency” includes without limitation:
  - Institution of higher education
  - Child care facility
  - State park
  - After-school program
  - Hospital
  - State Agency or other entity of the state
  - Contractor operating an on-campus cafeteria for any of the entities stated above
- “Food product” means a substance, whether in liquid, concentrated, solid, frozen, dried, or dehydrated form, that is sold for ingestion or chewing by humans and is consumed for its taste or nutritional value.
- “Local farm or food products” means food products that are grown in Arkansas or packaged and processed in Arkansas, or both.

### Procurement Goals:

- For the fiscal year 2018, each agency shall make it a goal to ensure that ten percent (10%) of the amount budgeted for the agency’s purchases of food products is spent on local farm or food products.
- For the fiscal years beginning on and after July 1, 2018, each agency shall make it a goal to ensure that twenty percent (20%) of the amount budgeted for the agency’s purchases of food products is spent on local farm or food products when:
  - The contract is awarded to the lowest bidder



- A responsible and responsive bidder that is a provider of local farm or food products submits a bid that does not exceed the lowest bid by more than ten percent (10%); and
- The responsible and responsive bidder submitting the lowest bid is not a provider of local farm or food products
- Each agency shall:
  - Identify the percentage of funds spent on local farm or food products purchased for fiscal year 2017 to establish a baseline; and
  - Develop a system for tracking and reporting purchases of local farm or food products each fiscal year.

#### Reporting Requirements:

By October 1 of each year, an agency shall submit a compliance report to the Bureau of Legislative Research stating:

- The name of the agency;
- A policy statement signed by the executive head of the agency expressing a commitment to comply;
- The name of the person in the agency who is responsible for developing and administering the compliance report required under this section;
- The manner in which the agency intends to reach the procurement goals;
- The dollar value of the contracts the agency awarded to providers of local farm or food products in the previous fiscal year; and
- The percentage of the total dollar value of contracts the agency awarded for purchases of food products that were awarded to providers of local farm or food products.

#### Promotion:

The Arkansas Agriculture Department may use its internet resources to;

1. Promote, create, and expand local farm and food economies in this state;
2. Maintain a list of local farm or food products and the providers of local farm or food products; and
3. Facilitate compliance

The Arkansas Agriculture Department shall establish a program coordinator position, which shall be responsible for developing partnerships among vendors, agencies, and providers of local farm or food products to support the procurement goals.

## SUMMARY OF DATA

Approximately 130 state agencies were asked to complete a “reporting form,” by way of a survey, and provide information pertaining to the questions listed below. Of the 130 agencies surveyed, 103 responded.

1. In FY2017, did your institution receive at least \$25,000 from the state that was used to purchase food or food products? *(If your answer is no, the survey is complete - stop here).*
2. In FY2017, what was the amount of funding from the state your institution used to purchase food or food products as defined in Question #1? *(This question is not limited to food or food products grown in Arkansas or packaged and processed in Arkansas).*
3. In FY2017, of the amount of funding identified in Question #2, what is the amount your institution spent on “local” food or food products as defined in Question #1? *(This question is limited to local food or food products defined as food products that are grown in Arkansas or packaged and processed in Arkansas, or both).*
4. In FY2017, of the amount of funding identified in Question #2, what is the percentage your institution spent on “local” food or food products as defined in Question #1? *(This question is limited to local food or food products defined as food products that are grown in Arkansas or packaged and processed in Arkansas, or both).*
5. If your institution receives funds from the state for the purchase of food or food products for FY2018 and thereafter, what steps will your institution take in an effort to reach the procurement goals outlined in Act 617 of 2017:
6. Based upon Questions #5, what is the best estimate (forecast) for the percentage your institution will spend on local food or food products in FY2018?
7. Agency’s Policy Statement to complying with Act 617 of 2017.
8. Please list below any purchases in FY2017 from local farm and food products in Arkansas (please combine providers with multiple purchases)



## SUMMARY OF DATA (Cont.)

Of the 130 agencies who received the reporting form, approximately 91 of the agencies answered “No” to Question #1 - “In FY2017, did your institution receive at least \$25,000 from the state that was used to purchase food or food products? (If your answer is no, the survey is complete - stop here)”. The “no” response generated the word “Terminated.”

AGENCY	NO (Did not receive at least \$25,000 from the state for the purchase of food or food products)	
Arkansas Burial Association Board	1	Terminated
Arkansas Economic Development Commission	1	Terminated
Arkansas Professional Bail Bondsman Licensing Board	1	Terminated
Arkansas State Board of Embalmers and Funeral Directors	1	Terminated
Arkansas Tobacco Control	1	Terminated
Arkansas State Crime Laboratory	1	Terminated
Arkansas Agriculture Department	1	Terminated
Arkansas Appraiser Licensing & Certification Board	1	Terminated
Arkansas Archeological Survey	1	Terminated
Arkansas Beef Council	1	Terminated
Arkansas Board of Examiners in Speech Language Pathology & Audiology	1	Terminated
Arkansas Board of Podiatric Medicine	1	Terminated
Arkansas Catfish Promotion Board	1	Terminated
Arkansas Cemetery Board	1	Terminated
Arkansas Corn & Grain Sorghum Promotion Board	1	Terminated
Arkansas Crime Information Center	1	Terminated
Arkansas Department of Aeronautics	1	Terminated
Arkansas Department of Emergency Management	1	Terminated
Arkansas Department of Health	1	Terminated
Arkansas Department of Higher Education	1	Terminated
Arkansas Department of Workforce Services	1	Terminated
Arkansas Educational Television Network	1	Terminated
Arkansas Fair Housing Commission	1	Terminated
Arkansas Fire Protection Licensing Board	1	Terminated
Arkansas Geographic Information Systems Office	1	Terminated
Arkansas Insurance Department	1	Terminated
Arkansas Manufactured Home Commission	1	Terminated
Arkansas Martin Luther King, Jr. Commission	1	Terminated
Arkansas Military Department	1	Terminated
Arkansas Minority Commission	1	Terminated
Arkansas Natural Resources Commission	1	Terminated
Arkansas Parole Board	1	Terminated

## SUMMARY OF DATA (Cont.)

AGENCY		NO (Did not receive at least \$25,000 from the state for the purchase of food or food products)
Arkansas Psychology Board	1	Terminated
Arkansas Public Employees Retirement System	1	Terminated
Arkansas Rice Research and Promotion Board	1	Terminated
Arkansas School for Mathematics, Sciences and the Arts	1	Terminated
Arkansas Sentencing Commission	1	Terminated
Arkansas Spinal Cord Commission	1	Terminated
Arkansas State Bank Department	1	Terminated
Arkansas State Board of Athletic Training	1	Terminated
Arkansas State Board of Chiropractic Examiners	1	Terminated
Arkansas State Board of Nursing	1	Terminated
Arkansas State Board of Physical Therapy	1	Terminated
Arkansas State Board of Professional Engineers and Professional Surveyors	1	Terminated
Arkansas State Board of Public Accountancy	1	Terminated
Arkansas State Library	1	Terminated
Arkansas State Medical Board	1	Terminated
Arkansas State University Jonesboro	1	Terminated
Arkansas State University Mid-South	1	Terminated
Arkansas Teacher Retirement System	1	Terminated
Arkansas Tobacco Settlement Commission	1	Terminated
Arkansas Towing & Recovery Board	1	Terminated
Arkansas Wheat Promotion Board	1	Terminated
Black River Technical College	1	Terminated
Board of Dental Examiners	1	Terminated
Board of Hearing Instrument Dispensers	1	Terminated
Board of Pharmacy	1	Terminated
Chartwells Dining Service - Arkansas Tech University	1	Terminated
College of the Ouachitas	1	Terminated
Cossatot Community College of the University of Arkansas	1	Terminated
Crowley's Ridge Technical Institute	1	Terminated
Department of Arkansas Heritage	1	Terminated
Department of Career Education	1	Terminated
Disability Determination for Social Security Administration	1	Terminated
East Arkansas Community College	1	Terminated
Judicial Discipline and Disability Commission	1	Terminated
Liquefied Petroleum Gas Board	1	Terminated



## SUMMARY OF DATA (Cont.)

AGENCY	NO	(Did not receive at least \$25,000 from the state for the purchase of food or food products)
North Arkansas College	1	Terminated
Northwest Arkansas Community College	1	Terminated
Office of the Medicaid Inspector General	1	Terminated
Oil & Gas Commission	1	Terminated
Ozarka College	1	Terminated
Phillips Community College of the University of Arkansas	1	Terminated
Public Service Commission	1	Terminated
Securities Department	1	Terminated
Southeast Arkansas College	1	Terminated
Southern Arkansas University	1	Terminated
State Board of Barber Examiners	1	Terminated
State Board of Collection Agencies	1	Terminated
University of Arkansas - Pulaski Technical College	1	Terminated
University of Arkansas at Monticello	1	Terminated
University of Arkansas Clinton School of Public Service	1	Terminated
University of Arkansas Community College at Hope	1	Terminated
University of Arkansas Community College Morrilton	1	Terminated
University of Arkansas Community College Rich Mountain	1	Terminated
University of Arkansas for Medical Science	1	Terminated
University of Arkansas System	1	Terminated
University of Central Arkansas	1	Terminated
Veterinary Medical Examining Board	1	Terminated
Workers' Compensation Commission	1	Terminated

## SUMMARY OF DATA (Cont.)

Of the 130 agencies who received the reporting form, approximately 12 completed the form by answering the 7 questions outlined in the “Summary of Data” on page 3. These agencies are listed below, and for a detail of each agency’s food purchases, **See Appendix A – Reporting Results.**

AGENCY		YES (Received at least \$25,000 from the state for the purchase of food or food products)
Arkansas Community Correction	1	Completed
Arkansas Department of Correction	1	Completed
Arkansas Department of Parks and Tourism – Ark State Parks	1	Completed
Arkansas Rehabilitation Services	1	Completed
Arkansas School for the Blind	1	Completed
Arkansas School for the Deaf	1	Completed
Arkansas State Police	1	Completed
ASU-Beebe	1	Completed
Department of Human Services	1	Completed
Henderson State University	1	Completed
Southern Arkansas University Tech	1	Completed
University of Arkansas-Fayetteville	1	Completed

## APPENDICES

- APPENDIX A – Reporting Results
- APPENDIX B – Act 617 of 2017



## The Local Food, Farms, and Jobs Act (Act 617 of 2017)

<b>RESPONDENT INFORMATION</b>			<b>DATE:</b>	11/27/2017 09:24
Agency:	Arkansas Community Correction		Agency No.:	0485
Mailing Address:	105 W Capitol 4th Floor	City/State/Zip	Little Rock, AR 72201	
Name of the person in your agency responsible for developing and administering the compliance report.				
Name:	Latreasa Mullins	Title:	Procurement Administrator	
Email:	Latreasa.mullins@arkansas.gov		Phone No.:	501-529-9352
1. In FY2017, did your institution receive at least \$25,000 from the state that was used to purchase food or food products? (If your answer is no, the survey is complete - stop here).				Yes
2. In FY2017, what was the amount of funding from the state your institution <b>used to purchase food or food products</b> as defined in Question #1? (This question is <u>not limited</u> to food or food products grown in Arkansas or packaged and processed in Arkansas).				\$2,409,291.27
3. In FY2017, of the amount of funding identified in Question #2, what is the <b>amount your institution spent on "local" food or food products</b> as defined in Question #1? (This question is <u>is limited</u> to local food or food products defined as food products that are grown in Arkansas or packaged and processed in Arkansas, or both).				\$924,584.55
4. In FY2017, of the amount of funding identified in Question #2, what is the <b>percentage your institution spent on "local" food or food products</b> as defined in Question #1? (This question is <u>is limited</u> to local food or food products defined as food products that are grown in Arkansas or packaged and processed in Arkansas, or both).				38.00%
5. If your institution receives funds from the state for the purchase of food or food products for <b>FY2018 and thereafter</b> , what steps will your institution take in an effort to reach the procurement <b>goals</b> outlined in Act 617 of 2017: DCC will continue to evaluate our level of commitment, by ensuring the reinforcement and education of key staff in the procurement goal of the agency, emphasizing how utilizing local farm/food products directly affect the goals of the agency. DCC will continue to strive towards excellence, by conducting semi-annual food purchasing evaluations, focusing on farm/producers on the importance of conducting business with the State of Arkansas.				
6. Based upon Questions #5, what is the best <b>estimate</b> (forecast) for the <b>percentage your institution will spend on</b> local food or food products in FY2018?				38%
7 Agency's Policy Statement to complying with Act 617 of 2017: It is DCC policy to ensure all food purchases made by agency personnel and where possible, utilize local farm and/or food products to pursue purchasing opportunities. The agency will also encourage contract food vendors to utilize local farm and/or food products in order to enhance the purchasing level of the agency. We will seek out opportunities to utilize local farms, food producers, and/or food manufactures for contractual arrangements to meet our goal.				

8. Please list below any purchases of food or food products in FY2017 from "local" farm and food producers in Arkansas. (Please combine providers with multiple purchases) If you have more than 15 purchases please [click here](#) to download an entry form which can be upload in the online survey.

Name of the Local farmer/food products	Address	Items Purchased	Award Spent
Flowers Baking CO of Batesville	1223 S St. Louis St, Batesville, AR 72501	Fresh Bread	\$9,635.06
Turner Holding LLC	6901-130, Little Rock, AR 72214	Dairy, Milk Products	\$357,335.33
Hiland Diary Foods Company LLC	PO Box 2690, Fort Smith, AR 72902	Dairy, Milk Products	\$26,800.99
Vistar Corportation/ A Division of Performance Group	12650 E Arapahoe Rd Bldg, D, Centennial, CO 80112	Chicken (Tyson-Russellville, AR) Sugar Granulated (Cedar Lake Products Inc, Fayetteville, AR)	\$40,802.23
K. Hall & Sons	1900 Wright Ave, Little Rock, AR 72202	Fresh Produce (Cabbage, Bell Pepper, Onion, Potato, Celery)	\$3,429.51
Sysco Food Services of Arkansas	PO Box 193410, Little Rock, AR 72219	Chicken, Peaches, Rice, Greens, Beans, Green Beans, Peas	\$486,581.33
Comment:			



## REPORTING RESULTS

### The Local Food, Farms, and Jobs Act (Act 617 of 2017)

<b>RESPONDENT INFORMATION</b>			<b>DATE:</b>	<b>09/29/2017 11:22</b>
Agency:	Arkansas Department of Correction		Agency No.:	0480
Mailing Address:	P.O. Box 6408	City/State/Zip	Pine Bluff, AR 71611	
Name of the person in your agency responsible for developing and administering the compliance report.				
Name:	Teresa Funderburg	Title:	Procurement Administrator	
Email:	teresa.funderburg@arkansas.gov		Phone No.:	870-850-8502
1. In FY2017, did your institution receive at least \$25,000 from the state that was used to purchase food or food products? (If your answer is no, the survey is complete - stop here).				Yes
2. In FY2017, what was the amount of funding from the state your institution <b>used to purchase food or food products</b> as defined in Question #1? (This question is <u>not limited</u> to food or food products grown in Arkansas or packaged and processed in Arkansas).				\$24,804,064.00
3. In FY2017, of the amount of funding identified in Question #2, what is the <b>amount your institution spent on "local" food or food products</b> as defined in Question #1? (This question is <u>limited</u> to local food or food products defined as food products that are grown in Arkansas or packaged and processed in Arkansas, or both).				\$ 8,716,886.80
4. In FY2017, of the amount of funding identified in Question #2, what is the <b>percentage your institution spent on "local" food or food products</b> as defined in Question #1? (This question is <u>limited</u> to local food or food products defined as food products that are grown in Arkansas or packaged and processed in Arkansas, or both).				35.14%
5. If your institution receives funds from the state for the purchase of food or food products for <b>FY2018 and thereafter</b> , what steps will your institution take in an effort to reach the procurement <b>goals</b> outlined in Act 617 of 2017: For FY2018, •Work with existing grocery contract vendors to identify local farm/food products that are sold on their respective contracts. When feasible, ADC will purchase the local farm food products as identified on existing contracts. •Utilize the Arkansas Agriculture Department list of local farm/food providers (once available) to locate potential vendors. •ADC's Agricultural Division will continue to produce local farm products for inmate consumption. Note: 19-5-501 established the Department of Correction Farm Fund and provides a temporary loan which is repaid each year based on the value of products produced or processed on the farm that were consumed by inmates and other authorized personnel as certified by the Legislative Auditor to the Chief Fiscal Officer of the State. For FY2019 and thereafter, •Work with existing grocery contract vendors to identify local farm/food products that are sold on their respective contracts. When feasible, ADC will purchase the local farm food products as identified on existing contracts. •Utilize the Arkansas Agriculture Department list of local farm/food providers (once available) to locate potential vendors. •ADC's Agricultural Division will continue to produce local farm products for inmate consumption. Note: 19-5-501 established the Department of Correction Farm Fund and provides a temporary loan which is repaid each year based on the value of products produced or processed on the farm that were consumed by inmates and other authorized personnel as certified by the Legislative Auditor to the Chief Fiscal Officer of the State.				
6. Based upon Questions #5, what is the best <b>estimate</b> (forecast) for the <b>percentage your institution will spend on</b> local food or food products in FY2018?				%
7 Agency's Policy Statement to complying with Act 617 of 2017:  It shall be the policy of the Arkansas Department of Correction to support and encourage the procurement of local farm or food products as a significant portion of all food products purchased by the ADC for inmate consumption and other authorized personnel. The agency shall make it a goal to ensure that 10% of the amount budgeted in FY18 for food products is spent on local farm or food products and to ensure that 20% of the amount budgeted for food products in fiscal years beginning on or after July 1, 2018, will be spent on local farm or food products.				

8. Please list below any purchases of food or food products in FY2017 from "local" farm and food producers in Arkansas. (Please combine providers with multiple purchases) If you have more than 15 purchases please [click here](#) to download an entry form which can be upload in the online survey.

Name of the Local farmer/food products	Address	Items Purchased	Award Spent
Turner Holdings	6901 I-30, Little Rock, AR 72214	Milk	\$987,635.52
AC Sales	2611 CREEKSIDE DR, Little Rock, AR 72211	Drink Mixes, Kosher Foods	\$83,318.40
AR Correctional Industries	P O BOX 7468, Pine Bluff, AR 71611	Coffee, Tea	\$193,655.75
ADC Agri Division	P O BOX 7468, Pine Bluff, AR 71611	Beef	\$2,455,113.65
ADC Agri Division	P O BOX 7468, Pine Bluff, AR 71611	Pork	\$279,649.28
ADC Agri Division	P O BOX 7468, Pine Bluff, AR 71611	Eggs	\$777,523.50
ADC Agri Division	P O BOX 7468, Pine Bluff, AR 71611	Milk	\$947,531.45
ADC Agri Division	P O BOX 7468, Pine Bluff, AR 71611	Vegetables	\$2,992,459.25

Comment:











## REPORTING RESULTS

## The Local Food, Farms, and Jobs Act (Act 617 of 2017)

RESPONDENT INFORMATION			DATE:		10/02/2017 13:44	
Agency:	Arkansas School for the Blind			Agency No.:	0510	
Mailing Address:	2600 West Markham Street	City/State/Zip	Little Rock, AR 72205			
Name of the person in your agency responsible for developing and administering the compliance report.						
Name:	Melinda Bonifas	Title:	Fiscal Manager			
Email:	Melinda.Terry@asb.k12.ar.us				Phone No.:	501-603-3525
1. In FY2017, did your institution receive at least \$25,000 from the state that was used to purchase food or food products? (If your answer is no, the survey is complete - stop here).						Yes
2. In FY2017, what was the amount of funding from the state your institution <b>used to purchase food or food products</b> as defined in Question #1? (This question is <u>not limited</u> to food or food products grown in Arkansas or packaged and processed in Arkansas).						\$112,134.18
3. In FY2017, of the amount of funding identified in Question #2, what is the <b>amount your institution spent on "local" food or food products</b> as defined in Question #1? (This question is <u>limited</u> to local food or food products defined as food products that are grown in Arkansas or packaged and processed in Arkansas, or both).						\$-
4. In FY2017, of the amount of funding identified in Question #2, what is the <b>percentage your institution spent on "local" food or food products</b> as defined in Question #1? (This question is <u>limited</u> to local food or food products defined as food products that are grown in Arkansas or packaged and processed in Arkansas, or both).						-%
5. If your institution receives funds from the state for the purchase of food or food products for <b>FY2018 and thereafter</b> , what steps will your institution take in an effort to reach the procurement <b>goals</b> outlined in Act 617 of 2017: For FY2018, The Arkansas School for the Blind is required to purchase from the following mandatory state contracts: Hiland, Turner, Sysco, PFG, Tankersly, and Bimbo. The School will strive to meet the procurement goal for items purchased that are not available for purchase on the mandatory state contracts. For FY2019 and thereafter, The Arkansas School for the Blind is required to purchase from the following mandatory state contracts: Hiland, Turner, Sysco, PFG, Tankersly, and Bimbo. The School will strive to meet the procurement goal for items purchased that are not available for purchase on the mandatory state contracts.						
6. Based upon Questions #5, what is the best <b>estimate</b> (forecast) for the <b>percentage your institution will spend on</b> local food or food products in FY2018?						%
7 Agency's Policy Statement to complying with Act 617 of 2017: The Arkansas School for the Blind is required to purchase from the following mandatory state contracts: Hiland, Turner, Sysco, PFG, Tankersly, and Bimbo. The School will strive to meet the procurement goal for items purchased that are not available for purchase on the mandatory state contracts.						

8. Please list below any purchases of food or food products in FY2017 from "local" farm and food producers in Arkansas. (Please combine providers with multiple purchases) If you have more than 15 purchases please [click here](#) to download an entry form which can be upload in the online survey.

[illegible]

Comment: If the survey results in regards to the providers used in 2017 could be distributed once compiled, this would be beneficial.







## REPORTING RESULTS

### The Local Food, Farms, and Jobs Act (Act 617 of 2017)

<b>RESPONDENT INFORMATION</b>			<b>DATE:</b>	<b>09/26/2017 13:10</b>
Agency:	Arkansas State Police		Agency No.:	0960
Mailing Address:	1 State Police Plaza Drive	City/State/Zip	Little Rock, AR 72209	
Name of the person in your agency responsible for developing and administering the compliance report.				
Name:	Emma French	Title:	Fiscal Officer	
Email:	Emma.French@asp.arkansas.gov	Phone No.:	5016188333	
1. In FY2017, did your institution receive at least \$25,000 from the state that was used to purchase food or food products? (If your answer is no, the survey is complete - stop here).				Yes
2. In FY2017, what was the amount of funding from the state your institution <b>used to purchase food or food products</b> as defined in Question #1? (This question is <u>not limited</u> to food or food products grown in Arkansas or packaged and processed in Arkansas).				\$37,091.99
3. In FY2017, of the amount of funding identified in Question #2, what is the <b>amount your institution spent on "local" food or food products</b> as defined in Question #1? (This question is <u>limited</u> to local food or food products defined as food products that are grown in Arkansas or packaged and processed in Arkansas, or both).				\$5,597.23
4. In FY2017, of the amount of funding identified in Question #2, what is the <b>percentage your institution spent on "local" food or food products</b> as defined in Question #1? (This question is <u>limited</u> to local food or food products defined as food products that are grown in Arkansas or packaged and processed in Arkansas, or both).				15.09%
5. If your institution receives funds from the state for the purchase of food or food products for <b>FY2018 and thereafter</b> , what steps will your institution take in an effort to reach the procurement <b>goals</b> outlined in Act 617 of 2017: For FY2018, Arkansas State Police is on track, with our current practices, to meet this requirement for FY 2018. For FY2019 and thereafter Arkansas State Police will work to incorporate more Arkansas products and increase our percentage by 5 points.				
6. Based upon Questions #5, what is the best <b>estimate</b> (forecast) for the <b>percentage your institution will spend on</b> local food or food products in FY2018?				%
7 Agency's Policy Statement to complying with Act 617 of 2017: Arkansas State Police will work to educate the appropriate staff of Act 617 and will work to identify vendors offering Arkansas grown, produced or packaged foods.				

8. Please list below any purchases of food or food products in FY2017 from "local" farm and food producers in Arkansas. (Please combine providers with multiple purchases) If you have more than 15 purchases please [click here](#) to download an entry form which can be upload in the online survey.

Name of the Local farmer/food products	Address	Items Purchased	Award Spent
K Hall & Sons Produce	Little Rock	Lettuce - 702 each	\$805.00
K Hall & Sons Produce	Little Rock	Tomatos - 445 lbs	\$487.00
K Hall & Sons Produce	Little Rock	Cucumber - 160 lbs	\$165.95
K Hall & Sons Produce	Little Rock	Sweet Potatos - 800 lbs	\$198.00
K Hall & Sons Produce	Little Rock	Watermelon - 41 each	\$310.50
K Hall & Sons Produce	Little Rock	Canteloupe - 125 each	\$334.00
K Hall & Sons Produce	Little Rock	Green Bell Peppers - 30 lbs	\$40.50
K Hall & Sons Produce	Little Rock	Strawberries - 20 lbs	\$58.00
K Hall & Sons Produce	Little Rock	Peaches - 150 lbs	\$189.00
Hiland Diary	Little Rock	Whole Milk - 180 gal	\$1,058.70
Hiland Diary	Little Rock	2% Milk - 175 gal	\$794.45
Hiland Diary	Little Rock	Buttermilk - 1.5 gal	\$8.87
Sysco	Little Rock	Riceland Oil Peanut - 630 lbs	\$807.47
Sysco	Little Rock	Tyson Chicken Breast - 110 lbs	\$311.96
Sysco	Little Rock	Peach Cobbler - 22 lbs	\$27.83

Comment: Is there a way to save this survey, so you can work on it as you have time? Also, Director would be able to go in a sign after their review.







## REPORTING RESULTS

### The Local Food, Farms, and Jobs Act (Act 617 of 2017)

<b>RESPONDENT INFORMATION</b>			<b>DATE:</b>	<b>11/14/2017 11:14</b>
Agency:	Department of Human Services		Agency No.:	0710
Mailing Address:	700 Main Street	City/State/Zip	Little Rock, AR 72203	
Name of the person in your agency responsible for developing and administering the compliance report.				
Name:	Misty Eubanks	Title:	Chief Procurement Officer	
Email:	MISTY.BOWENEUBANKS@DHS.ARKANSAS.GOV		Phone No.:	501-320-6327
1. In FY2017, did your institution receive at least \$25,000 from the state that was used to purchase food or food products? (If your answer is no, the survey is complete - stop here).				Yes
2. In FY2017, what was the amount of funding from the state your institution <b>used to purchase food or food products</b> as defined in Question #1? (This question is <u>not limited</u> to food or food products grown in Arkansas or packaged and processed in Arkansas).				\$2,488,094.91
3. In FY2017, of the amount of funding identified in Question #2, what is the <b>amount your institution spent on "local" food or food products</b> as defined in Question #1? (This question is <u>limited</u> to local food or food products defined as food products that are grown in Arkansas or packaged and processed in Arkansas, or both).				\$510,780.62
4. In FY2017, of the amount of funding identified in Question #2, what is the <b>percentage your institution spent on "local" food or food products</b> as defined in Question #1? (This question is <u>limited</u> to local food or food products defined as food products that are grown in Arkansas or packaged and processed in Arkansas, or both).				20.50%
5. If your institution receives funds from the state for the purchase of food or food products for <b>FY2018 and thereafter</b> , what steps will your institution take in an effort to reach the procurement <b>goals</b> outlined in Act 617 of 2017: We will continue to procure food products as we have, as we currently exceed the annual goal for 2018 and beyond.				
6. Based upon Questions #5, what is the best <b>estimate</b> (forecast) for the <b>percentage your institution will spend on</b> local food or food products in FY2018?				20.5%
7 Agency's Policy Statement to complying with Act 617 of 2017: DHS will continue to support Arkansas farmers and producers/supplies of local food products, seek out opportunities to purchase local food and farm products when ever possible. We will work with the Office of State Procurement to clearly identify vendors and products that are made or produced in the State to allow for ease of procurement of these products by all state agencies. We will continue to procure food products as we have, as we currently exceed the annual goal for 2017.				

8. Please list below any purchases of food or food products in FY2017 from "local" farm and food producers in Arkansas. (Please combine providers with multiple purchases) If you have more than 15 purchases please [click here](#) to download an entry form which can be upload in the online survey.

Name of the Local farmer/food products	Address	Items Purchased	Award Spent
Sysco Food Service	5700 W. 65th Street, Little Rock, AR 72209	Bean-navy, baked, black, green (cut, Italian), kidney, pinto, carrots, corn-whole, turnip greens, hominy, peas-blackeye, green, diced potato, yams, mixed vegetables, spinach, additional dry goods, canned goods, and frozen goods	\$272,008.11
CV's Food	1157 East Main, Booneville, AR 72927	Tomatoes, cucumbers, soda, milk	\$2,360.08
Tankersley Food Service	PO Box 607, Van Buren, AR 72957	Pork & Beans, beans-green seasoned & cut, black, black, pinto, corn-cream, whole, mixed vegetables, turnip greens, blackeye peas, spinach, sweet yams, tortilla chips, flour tortilla 6' & 8' stretched, pressed, sliced pickled beets, halves apricot, boneless	\$10,860.06
Bimbo	7623 Industry Dr., North Little Rock, AR 72117	Bread	\$983.67
Hiland Dairy Food	PO Box 2690, Fort Smith, AR 72902	Milk	\$34,687.10
Turner Holdings Group	6901 I-30 Little Rock, AR 72212	Milk, ice cream, cottage cheese, yogurt, sour cream	\$188,138.44
Coco-Cola	PO Box 6607, Fort Smith, AR 72903	Soft drinks	\$1,743.25

Comment:















# APPENDIX B

Stricken language would be deleted from and underlined language would be added to present law.  
Act 617 of the Regular Session

State of Arkansas

*As Engrossed: H3/9/17*

91st General Assembly

**A Bill**

Regular Session, 2017

HOUSE BILL 1839

By: Representatives Beck, Bentley, Brown, Davis, Farrer, Henderson, Hillman, G. Hodges, Lemons,  
Magie, Payton, Sabin, Sullivan, Vaught

By: Senator D. Sanders

## For An Act To Be Entitled

AN ACT TO CREATE THE LOCAL FOOD, FARMS, AND JOBS ACT;  
AND FOR OTHER PURPOSES.

## Subtitle

TO CREATE THE LOCAL FOOD, FARMS, AND JOBS  
ACT.

BE IT ENACTED BY THE GENERAL ASSEMBLY OF THE STATE OF ARKANSAS:

SECTION 1. Arkansas Code Title 15, Chapter 4, is amended to add an  
additional subchapter to read as follows:

### Subchapter 38 – Local Food, Farms, and Jobs Act

#### 15-4-3801. Title.

This subchapter shall be known and may be cited as the "Local Food,  
Farms, and Jobs Act".

#### 15-4-3802. Legislative intent.

The General Assembly intends for this subchapter to:

(1) Create, strengthen, and expand local farm and food economies  
throughout the state; and

(2) Support and encourage the procurement of local farm or food  
products as a significant portion of all food products purchased by the  
state.



1 15-4-3803. Definitions.

2 As used in this subchapter:

3 (1)(A) "Agency" means an entity that:

4 (i) Is funded in whole or in part by the state; and

5 (ii) Receives at least twenty-five thousand dollars

6 (\$25,000) a year from the state for the purchase of food products.

7 (B) "Agency" includes without limitation a:

8 (i) Institution of higher education;

9 (ii) Child care facility;

10 (iii) State park;

11 (iv) After-school program;

12 (v) Hospital;

13 (vi) State agency or other entity of the state; and

14 (vii) Contractor operating an on-campus cafeteria

15 for any of the entities stated in subdivision (1)(B)(i)-(vi) of this section;

16 (2) "Food product" means a substance, whether in liquid,  
17 concentrated, solid, frozen, dried, or dehydrated form, that is sold for  
18 ingestion or chewing by humans and is consumed for its taste or nutritional  
19 value; and

20 (3) "Local farm or food products" means food products that are  
21 grown in Arkansas or packaged and processed in Arkansas, or both.

22  
23 15-4-3804. Procurement goal – Preference.

24 (a)(1) For the fiscal year 2018, each agency shall make it a goal to  
25 ensure that ten percent (10%) of the amount budgeted for the agency's  
26 purchases of food products is spent on local farm or food products.

27 (2) For fiscal years beginning on and after July 1, 2018, each  
28 agency shall make it a goal to ensure that twenty percent (20%) of the amount  
29 budgeted for the agency's purchases of food products is spent on local farm  
30 or food products.

31 (b) In awarding a contract for the purchase of food products, an  
32 agency shall give preference to a provider of local farm or food products  
33 when:

34 (1) The contract is to be awarded to the lowest bidder;

35 (2) A responsible and responsive bidder that is a provider of  
36 local farm or food products submits a bid that does not exceed the lowest bid



1 by more than ten percent (10%); and

2 (3) The responsible and responsive bidder submitting the lowest  
3 bid is not a provider of local farm or food products.

4 (c) Each agency shall:

5 (1) Identify the percentage of funds spent on local farm or food  
6 products purchased for fiscal year 2017 to establish a baseline; and

7 (2) Develop a system for tracking and reporting purchases of  
8 local farm or food products each fiscal year.

9 (d) This section does not require an agency to use any specific  
10 procurement method for obtaining food products.

11  
12 15-4-3805. Reporting requirements.

13 (a) By October 1 of each year, an agency shall submit a compliance  
14 report to the Bureau of Legislative Research stating:

15 (1) The name of the agency;

16 (2) A policy statement signed by the executive head of the  
17 agency expressing a commitment to complying with this subchapter;

18 (3) The name of the person in the agency who is responsible for  
19 developing and administering the compliance report required under this  
20 section;

21 (4) The manner in which the agency intends to reach the  
22 procurement goals stated in this subchapter;

23 (5) The dollar value of the contracts the agency awarded to  
24 providers of local farm or food products in the previous fiscal year; and

25 (6) The percentage of the total dollar value of contracts the  
26 agency awarded for purchases of food products that were awarded to providers  
27 of local farm or food products.

28 (b) By December 31 of each year, the bureau shall:

29 (1) Prepare a report compiling the information received under  
30 subsection (a) of this section; and

31 (2) Make the report required under this subsection available to  
32 the Governor and the cochaIRS of Legislative Council or, if the General  
33 Assembly is in session, the cochaIRS of the Joint Budget Committee.

34  
35 15-4-3806. Promotion.

36 (a) The Arkansas Agriculture Department may use its internet resources

1 to:

2 (1) Promote, create, and expand local farm and food economies in  
3 this state;

4 (2) Maintain a list of local farm or food products and the  
5 providers of local farm or food products; and

6 (3) Facilitate compliance with this subchapter.

7 (b)(1) The Arkansas Agriculture Department shall establish a program  
8 coordinator position, which shall be responsible for developing partnerships  
9 among vendors, agencies, and providers of local farm or food products to  
10 support the goals of this subchapter.

11 (2) The program coordinator shall:

12 (A) Provide support and assistance to providers of local  
13 farm or food products that wish to compete for a contract with an agency by:

14 (i) Assisting the provider of local farm or food  
15 products in developing a business plan;

16 (ii) Working with distribution representatives; and

17 (iii) Using available resources, including without  
18 limitation agencies and other public and private entities;

19 (B) Be a resource for agencies to use to assist in  
20 tracking and reporting their progress in satisfying the procurement goals  
21 stated in this subchapter;

22 (C) Be a liaison between agencies and providers of local  
23 farm or food products to facilitate access to local farm or food products;

24 (D) Encourage and facilitate involvement and participation  
25 in the Farm to School Program administered by the United States Department of  
26 Agriculture by working with providers of local farm or food products,  
27 vendors, and distributors to assess the need for and availability of local  
28 farm and food products; and

29 (E) Cooperate with the Arkansas Agriculture Department and  
30 providers of local farm or food products to promote, encourage, and increase  
31 participation in the Arkansas Grown program administered by the Arkansas  
32 Agriculture Department.

33  
34 15-4-3807. Relationship to federal law.

35 (a) If this subchapter conflicts with federal law pertaining to a  
36 federal aid program, the conflicting provision or provisions of this



1 subchapter do not apply to a contract that is subject to that federal law,  
2 rule, or regulation to the extent of the conflict.

3 (b) To the extent a conflict does not exist with federal law, this  
4 subchapter applies to contracts paid, in whole or in part, with federal  
5 funds.

6  
7 15-4-3808. Rules.

8 The Office of State Procurement may promulgate rules to implement and  
9 administer this subchapter, including without limitation a method for:

10 (1) Identifying and certifying vendors as providers of local  
11 farm or food products; and

12 (2) Determining the means of satisfying and tracking the  
13 procurement goals stated in this subchapter.

14  
15 */s/Beck*

16  
17  
18 *APPROVED: 03/24/2017*