

# Arkansas Insurance Department

## 2010 Annual Report



**1200 West Third Street  
Little Rock, AR 72201-1904  
1-501-371-2600, 1-800-282-9134  
[www.insurance.arkansas.gov](http://www.insurance.arkansas.gov)**



**The Honorable Mike Beebe, Governor of Arkansas**

I am pleased to present to you the 2010 Annual Report of the Arkansas Insurance Department. This report is established by the provisions of Arkansas Code Ann. § 23-61-112 and summarizes the activities of the Arkansas Insurance Department for the calendar year ending December 31, 2010.

In addition to the required financial disclosures and listing of companies operating in Arkansas, this report highlights the work of the Arkansas Insurance Department on behalf of Arkansas insurance consumers.

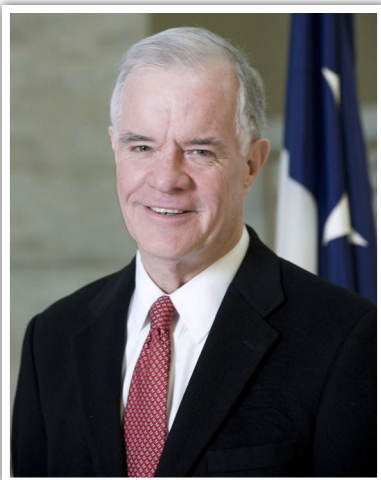
Sincerely,

A handwritten signature in blue ink that reads "Jay Bradford". The signature is fluid and cursive, with the first letters of "Jay" and "Bradford" being capitalized and prominent.

Jay Bradford  
State Insurance Commissioner

# *Table of Contents*

A Message from the Commissioner	1
History of Insurance Commissioners	2
AID Leadership Team	5
AID Divisions and Programs	6
AID Receipts, Revenue Distribution and Expenditures	9
AID Services:	
Consumer Complaints and Inquiries	10
Consumer Recoveries	10
Medicare Recipients Served	10
Producers & Business Entities (Agents and Agencies)	11
New Company Admissions	11
Total Licensed Companies	11
AID Examinations:	
Financial Examinations	12
Financial Analysis	12
Prepaid Funeral Benefits Contracts	12
Insurance Fraud Investigations	12
Legal Proceedings	12
Liquidation and Rehabilitations	12
Insurers Listed by Arkansas Premium as of 12/31/2010	
Farmers Mutual Aid Associations	13
Fraternal Organizations	13
HMO and HMDI Companies	13
Life and Health Companies	14
Property and Casualty Companies	22
Title Companies	34



## *A Message From the Commissioner*

It's hard to believe I have been your Arkansas Insurance Commissioner for nearly three years now. I am enjoying myself so much the time has simply flown. My daily challenge, and that of the entire Arkansas Insurance Department (AID), is to protect Arkansas insurance consumers. To that end, the 2010 data in this report show over \$6 million was returned to Arkansans after they filed a complaint with AID.

We were also able to expand our Consumer Services Division this past year as a result of a one-time grant from the Department of Health and Human Services. These federal funds provided more individuals available to respond to consumer questions relating to health care and provisions of the Affordable Care Act (ACA).

The number of active producers and adjusters took a jump during Fiscal Year 2010, up nearly 3,000 from FY 2009. I hope this reflects that more folks are interested in insurance as a career.

I am proud to be a part of a state agency which strives every day to help the citizens of our state. I hope you will see the efforts of my entire staff reflected in the information contained in this report.

## *Mission Statement*

***The purpose of the State Insurance Department is to serve and protect the public interest by the equitable enforcement of the state's laws and regulations affecting the insurance industry.***

***The primary mission of the State Insurance Department shall be consumer protection through insurer solvency and market conduct regulation, and fraud prosecution and deterrence.***

# History of Insurance Commissioners

## AUDITORS OF STATE

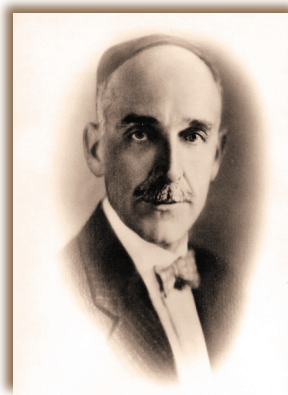
The work of the Insurance Department was formerly placed by law in the office of the Auditor of State. The "Insurance Bureau" was established in the Auditor's office by the Act of April 25, 1873, the Auditor being charged by same with the execution of the laws of the state relating to insurance.

The General Assembly of 1917, by Act No. 190, approved March 7, 1917, on account of the greatly increased volume of work required to be done by the insurance department, separated same from the office of the Auditor of State and created the State Insurance Department. The head of the Insurance Department shall be an Insurance Commissioner appointed by the Governor with the advice and consent of the Senate. The Insurance Commissioner shall enforce the provisions of the Arkansas Insurance Code and shall execute the duties imposed upon him or her by the Arkansas Insurance Code.

## Ex-officio Commissioners of Insurance

1873 - 1874	Stephen Wheeler	
1874 - 1877	W. R. Miller	
1877 - 1882	John Crawford	
1883 - 1886	A. W. Files	(Died in office. W. R. Miller was appointed to fulfill the unexpired term.)
1887 - 1892	W. S. Dunlap	
1893 - 1896	C. B. Miles	
1897 - 1900	Clay Sloan	
1901 - 1904	T. C. Monroe	
1905 - 1908	A. E. Moore	
1909 - 1912	John R. Jobe	
1912 - 1913	John N. Oathout	(Elected Auditor September 1912, died June 20, 1913. L. Coffman appointed June 23, 1913.)
1913 - 1914	L. L. Coffman	(Resigned March 4, 1914. M. F. Dickinson was appointed to fulfill the unexpired term.)
1915 - 1916	M. F. Dickinson	

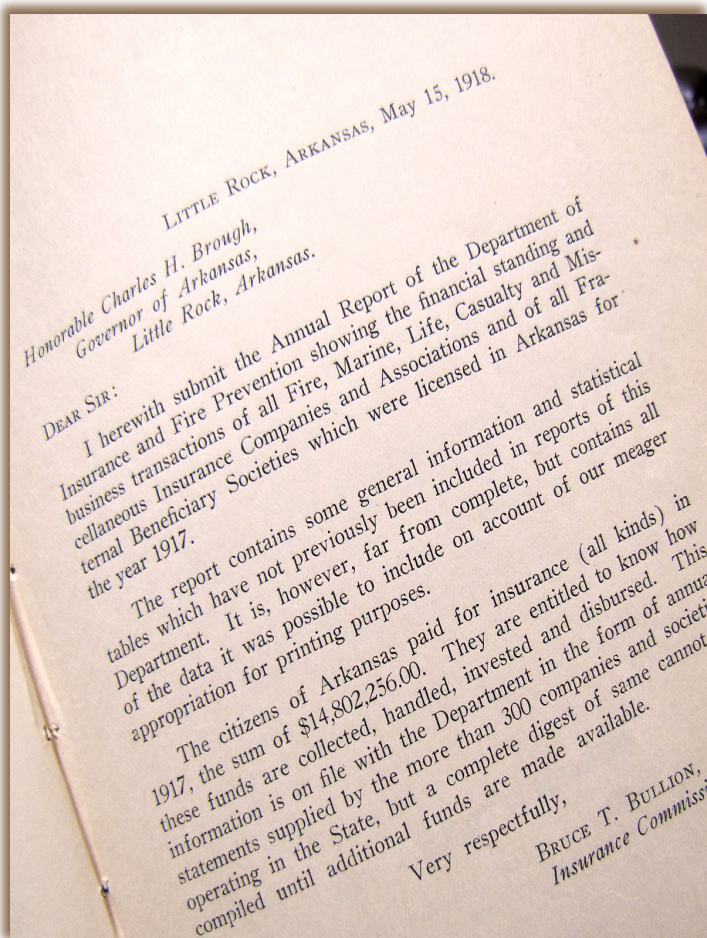
## INSURANCE COMMISSIONERS



1917-1924  
Bruce T. Bullion



1924-1925/1937-1941  
M. J. Harrison





1925-1927/1929-1931  
W. E. Floyd



1927-1929  
J. S. Maloney



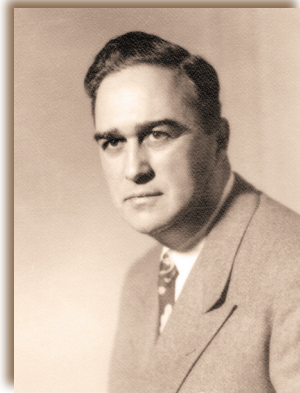
1931-1933  
A. D. Dulaney



1933-1937  
U. A. Gentry



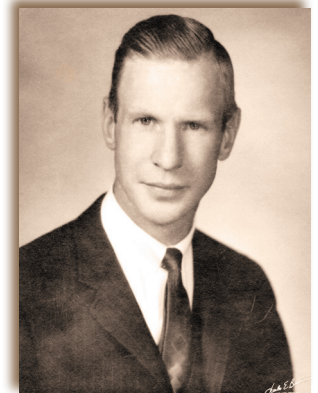
1941-1945/1949-1953  
J. Herbert Graves



1945-1949  
Jack McKenzie



1953-1967  
Harvey G. Combs



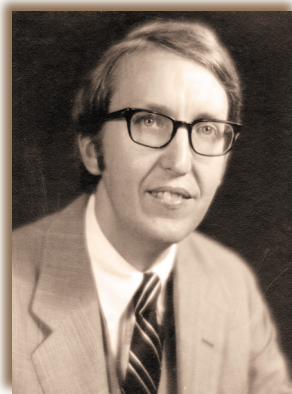
1967-1968  
John Norman Harkey



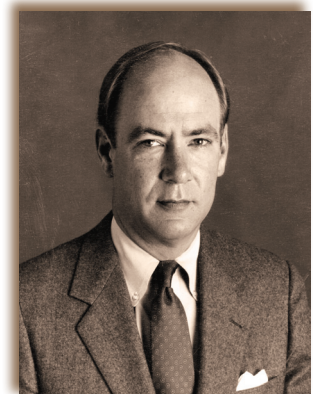
1968-1970  
Allen W. Horne



1970-1972  
A. Gene Sykes



1972-1976  
Ark Monroe, III



1976-1982  
\*W. H. L. Woodyard, III



1983-1985  
Linda N. Garner



1985-1988  
Robert M. Eubanks, III



1988 - 1990  
Ron Taylor



1990-1996  
\*Lee Douglass



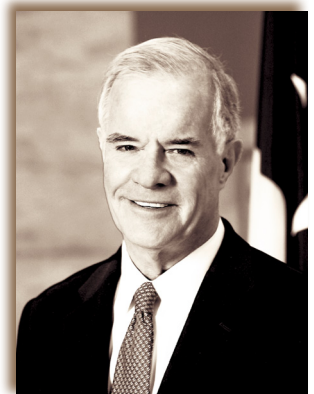
1997-2005  
\*Mike Pickens



2005-2008  
Julie Benafield Bowman



2009  
Lenita Blasingame



2009-  
Jay Bradford

**\*President of the National Association of Insurance Commissioners (NAIC)**

The Arkansas Insurance Department is accredited by the NAIC. To achieve this accreditation, the Department must meet stringent national standards that demonstrate it effectively regulates insurance companies for solvency. The Arkansas Insurance Department views accreditation by the NAIC as an important part of our commitment to the citizens of Arkansas. Accreditation standards enable us to provide expanded consumer protections and to institute and maintain the highest standards in financial regulation. NAIC repeats the accreditation review every five years to confirm that the Department continues to meet all requirements. The Department was most recently accredited in March 2011.

# AID Leadership Team

## ADMINISTRATION

Jay Bradford, State Insurance Commissioner ..... 501-371-2623 ..... jay.bradford@arkansas.gov  
Lenita Blasingame, Insurance Chief Deputy Commissioner ..... 501-371-2824 ..... lenita.blasingame@arkansas.gov  
Alice Jones, Public Information Manager ..... 501-371-2835 ..... alice.jones@arkansas.gov

## ACCOUNTING

Pam Looney, Insurance Assistant Deputy Commissioner ..... 501-371-2605 ..... pam.looney@arkansas.gov

## CONSUMER SERVICES

Jackie Smith, Insurance Consumer Protection Manager ..... 501-371-2640 ..... jackie.smith@arkansas.gov

## CRIMINAL INVESTIGATION

Greg Sink, Criminal Investigation Division Director ..... 501-371-2790 ..... greg.sink@arkansas.gov

## FINANCE

Mel Anderson, Insurance Deputy Commissioner Financial Reg. .... 501-371-2665 ..... mel.anderson@arkansas.gov

## HEALTH BENEFITS EXCHANGE PLANNING

Cynthia Crone, Planning Director ..... 501-683-3634 ..... cynthia.crone@arkansas.gov

## HEALTH INSURANCE RATE REVIEW

Lowell Nicholas, Insurance Deputy Commissioner ..... 501-683-3638 ..... lowell.nicholas@arkansas.gov

## HUMAN RESOURCES

Andrea May, Personnel Manager ..... 501-371-2818 ..... andrea.may@arkansas.gov

## INFORMATION SYSTEMS

Vacant, Deputy Commissioner Information Services ..... 501-683-2657 ..... @arkansas.gov

## LEGAL

Bill Lacy, Insurance Deputy Commissioner & General Counsel ..... 501-371-2820 ..... bill.lacy@arkansas.gov

## LICENSE

Fred Stiffler, Insurance Licensing Manager ..... 501-371-2750 ..... fred.stiffler@arkansas.gov

## LIFE & HEALTH

Dan Honey, Insurance Deputy Commissioner ..... 501-371-2800 ..... dan.honey@arkansas.gov

## LIQUIDATION

Steve Uhrynowycz, Deputy Receiver ..... 501-371-2776 ..... steve.uhrynowycz@arkansas.gov

## PROPERTY & CASUALTY

Dan Honey, Insurance Deputy Commissioner ..... 501-371-2800 ..... dan.honey@arkansas.gov

## PUBLIC EMPLOYEE CLAIMS

Nathan Culp, Insurance Public Employee Claims Director ..... 501-371-2700 ..... nathan.culp@arkansas.gov

## RISK MANAGEMENT

Drew Carpenter, Director Risk Management ..... 501-371-2690 ..... drew.carpenter@arkansas.gov

## SENIOR HEALTH INSURANCE INFORMATION PROGRAM (SHIIP)

Melissa Simpson, SHIIP Manager ..... 501-371-2782 ..... melissa.simpson@arkansas.gov

# AID Divisions and Programs

## ADMINISTRATION

501-371-2622

[insurance.administration@arkansas.gov](mailto:insurance.administration@arkansas.gov)

The Administration Division oversees the overall operations of the AID, establishes Department policy, handles all media inquiries, security, and coordinates consumer protection and outreach activities. Each of the divisions works collectively to ensure the Department's mission of consumer protection is fulfilled. This staff of more than 180 highly skilled and dedicated employees is committed to serving the citizens of Arkansas every day.

## ACCOUNTING

501-371-2605

[insurance.accounting@arkansas.gov](mailto:insurance.accounting@arkansas.gov)

The Accounting Division collects and oversees fees and premium taxes from all insurance companies conducting business in the State of Arkansas. These fees not only fund the AID (no monies are received from the state's General Revenue Fund), but the taxes are also used to contribute to the state's Police and Firemen Pension Funds and General Revenue. The division handles all purchasing and accounts payable for AID, as well as the development of biennium budgets.

## CONSUMER SERVICES

501-371-2640 or 800-852-5494  
800-852-5494 CAP

[insurance.consumers@arkansas.gov](mailto:insurance.consumers@arkansas.gov)

The Consumer Services Division (CSD) assists insurance consumers with complaints and inquiries regarding insurance companies, producers, and adjusters. CSD investigates all complaints, working with the insurance company and the consumer to determine the appropriate course of action. CSD travels statewide to provide educational information and materials, and in the event of significant storm damage, travels to damaged areas to assist homeowners with filing claims and procuring emergency living expenses. The Arkansas Consumer Assistance Program (CAP), a section of CSD, works to assist consumers with filing health insurance complaints and appeals, enrollment into health coverage, and to educate consumers on their rights and responsibilities with respect to group health plans and health insurance coverage.

## CRIMINAL INVESTIGATION

501-371-2790 or 866-660-0888

[insurance.fraud@arkansas.gov](mailto:insurance.fraud@arkansas.gov)

The Criminal Investigation Division (CID) receives hundreds of referrals of suspected fraud each year. CID investigates and prosecutes all categories of insurance fraud. Investigations that result in a finding of a criminal violation are referred to the appropriate prosecuting attorney's office. In 2010, CID achieved a 100% conviction rate on those cases referred for prosecution.

## FINANCE

501-371-2665

[insurance.finance@arkansas.gov](mailto:insurance.finance@arkansas.gov)

The primary goal of the Finance Division is to protect insurance consumers through effective solvency regulation by monitoring the financial condition of all domestic and foreign insurance companies operating in the state; conducting financial and market conduct examinations; reviewing other financial information and reports filed by insurance entities, such as business plans, reinsurance agreements, merger and acquisition documents, company formation documents, market research and feasibility studies; approves the licensing of insurers, captives, risk retention groups, surplus lines, charitable annuities, continuing care facilities, motor clubs, reinsurance intermediaries, service contract providers, and accredited/trusted reinsurers; examines prepaid funeral contracts and conducts financial examinations of licensees' trust funds and custodial accounts; and oversees statutory security deposits of insurance companies.

## HEALTH BENEFITS EXCHANGE PLANNING

501-683-7077

[insurance.exchange@arkansas.gov](mailto:insurance.exchange@arkansas.gov)

The Affordable Care Act (ACA) became law on March 23, 2010. A Health Benefits Exchange is a mechanism created by the Act for organizing the health insurance marketplace to help consumers and small businesses shop for coverage in a way that permits easy comparison of available health plan options based on price, benefits, services and quality. A major question to be decided in Arkansas is whether that Exchange will be operated by Arkansas, a group of states, or the

federal government. The Health Benefits Exchange Planning Division is leading an open and inclusive planning process to identify characteristics of the best Health Benefits Exchange for Arkansas.

#### **HEALTH INSURANCE PREMIUM RATE REVIEW      501-683-7023**

***[insurance.hirr@arkansas.gov](mailto:insurance.hirr@arkansas.gov)***

The Health Insurance Premium Rate Review Division (HIPRR) was created to enforce provisions of the Affordable Care Act implementing improvements to states' rate review processes. On July 1, 2011, the Center for Consumer Information and Insurance Oversight (CCIIO) determined that Arkansas has an effective rate review program after reviewing Arkansas's laws, regulations, and bulletins. The ACA establishes a process for reviewing the reasonableness of health insurance premiums. The primary purpose of HIPRR is to help improve insurer accountability and consumer transparency regarding health insurance premium rate increases.

#### **HUMAN RESOURCES**

**501-371-2818**

***[insurance.human.resources@arkansas.gov](mailto:insurance.human.resources@arkansas.gov)***

The Human Resources Division is responsible for recruiting, hiring, payroll, employee benefits, personnel budget preparation and management, employee training, and continuing education for staff.

#### **INFORMATION SYSTEMS**

**501-371-2657**

***[insurance.information.systems@arkansas.gov](mailto:insurance.information.systems@arkansas.gov)***

The Information Systems Division (IS) keeps the Department operating effectively and efficiently in the ever-changing world of technology. This is achieved through the IS strategy of leveraging up-to-date, state of the art software and systems technology to continually increase the productivity of the overall Department. The result is minimal growth in the number of Department staff in the face of continued growth in the size of the regulated industry and revenue.

#### **LEGAL**

**501-371-2820**

***[insurance.legal@arkansas.gov](mailto:insurance.legal@arkansas.gov)***

The Legal Division works closely with every division within the AID, participating in numerous investigations, drafting legislation, rules, bulletins, directives, legal opinions, and investigating consumer complaints. Division attorneys represent the Commissioner and AID staff in lawsuits or other proceedings, administrative hearings and court appeals pertaining to alleged licensee insurance code or rule violations by a licensee and insurance company acquisitions, mergers, reinsurance agreements and similar transactions. 2010 recommendations of the Commissioner as to amendments or supplementation of laws affecting insurance and as to matters affecting the Department were addressed in the 2011 Legislative Session. Legislation passed can be viewed at [www.insurance.arkansas.gov/Legal%20Dataservices/Bulletins/3-2011.pdf](http://www.insurance.arkansas.gov/Legal%20Dataservices/Bulletins/3-2011.pdf).

#### **LICENSE**

**501-371-2750**

***[insurance.license@arkansas.gov](mailto:insurance.license@arkansas.gov)***

The Licensing Division is responsible for the licensing of resident and nonresident producers, adjusters, title agents, and business entities that are soliciting, selling or negotiating insurance in the State of Arkansas. License oversees the producer examinations and investigates all resident applicants by reviewing Arkansas State Police records. It also ensures that necessary laws are followed regarding license renewals and continuing education.

#### **LIFE & HEALTH**

**501-371-2765**

***[insurance.LnH@arkansas.gov](mailto:insurance.LnH@arkansas.gov)***

The Life & Health Division (L&H) is responsible for the review and approval of life and health forms, rates and advertising. L&H must approve premiums for individual health policies and must ensure that benefits on health policies provide an acceptable relationship to the premiums charged. L&H reviews contracts for guaranteed interest policies, including life and annuity and variable contracts, equity indexed annuities, funeral insurance, credit life and disability, individual and group health plans, long-term care, Medicare supplements and supplemental benefits contracts, as well as contracts for health maintenance organizations (HMOs).

## **LIQUIDATION**

**501-371-2776**

***insurance.liquidation@arkansas.gov***

The Liquidation Division, on behalf of the Insurance Commissioner as Receiver, manages the day to day affairs of insolvent insurance company estates and insolvent prepaid funeral benefit trusts. Although the Liquidation Division performs certain functions on behalf of the Commissioner, individuals employed with this division are not employed by the State of Arkansas. Liquidation does not receive any funding from the State of Arkansas. Liquidation administers the Arkansas Life and Health Insurance Guaranty Association (ALHIGA) and the Arkansas Property & Casualty Guaranty Fund (APCGF). During 2010, APCGF paid over \$1,775,647 to adjust, settle or litigate claims and recovered over \$2,480,810 as a result of sixteen non-domestic and one domestic insurance company receiverships. During 2010, ALHIGA provided benefits to Arkansas insureds and claimants totaling more than \$743,276, and recovered over \$1,255,738 as a result of seven domestic and non-domestic insurance company receiverships.

## **PROPERTY & CASUALTY**

**501-371-2800**

***insurance.PnC@arkansas.gov***

The Property & Casualty Division (P&C) is responsible for monitoring and regulating rate and form filing activities. All insurance companies transacting business in the State of Arkansas for, surety, workers' compensation and all other property and casualty coverage must submit their forms to P&C for approval. The forms are then reviewed to ensure compliance with state law. For most lines of insurance, Arkansas is considered a "competitive rating state" and, as such, requests for rate changes are effective 20 days after they are filed unless those changes are excessive, inadequate, or unfairly discriminatory.

## **PUBLIC EMPLOYEE CLAIMS**

**501-371-2700**

***insurance.public.employee.claims@arkansas.gov***

The Public Employee Claims Division (PECD) is responsible for the investigation and management of more than 3,600 workers' compensation claims filed each year for Arkansas state employees. Workers' compensation coverage is also provided for emergency service volunteers who are accidentally injured while performing services under the call and supervision of the State of Arkansas. PECD encourages state agencies to implement safety programs, hoping to reduce the number of injuries suffered by state employees. PECD personnel give presentations to several audiences each year. The prevention of injuries helps in three areas: 1) improves the quality of life of employees; 2) helps agencies with staffing issues; and 3) reduces workers' compensation costs for the taxpayers of the State of Arkansas.

## **RISK MANAGEMENT**

**501-371-2690**

***insurance.risk.management@arkansas.gov***

The Risk Management Division (Risk) was established to minimize the cost of insurance and surety bonding to Arkansas state agencies, and to analyze and make recommendations on loss control and safety programs in an effort to protect state assets. In 2004, Risk assumed the responsibility of providing insurance coverage, consulting, and loss control services to public schools that choose to participate in the Public School Property and Vehicle Insurance Trust Fund. Property inspections and appraisals are conducted on approximately 5,500 state owned and leased structures and 2,500 school district structures with insured values of \$10.5 billion. A vehicle safety program covering 5,500 state agency and 5,000 public school vehicles has been in effect for many years, resulting in improved loss ratios. Risk also offers an on-site advanced defensive driver training at no cost to state agencies and participating schools.

## **SENIOR HEALTH INSURANCE INFORMATION PROGRAM**

***insurance.SHIIP@arkansas.gov***

**501-371-2782 or 800-224-6330**

The Senior Health Insurance Information Program (SHIIP) provides Medicare assistance to Medicare beneficiaries and their caregivers in person and via telephone. SHIIP contracts with local organizations and recruits volunteers to educate Arkansans about Medicare through information, counseling, presentations and health fairs. SHIIP produces Medicare, Medicare Advantage, and Medicare Part D publications for order and distribution via its website. In addition, SHIIP assists with applications for Medicare subsidy programs like Medicare Savings Program and Extra Help enabling recipients to save thousands of dollars annually.



# *AID Receipts, Revenue Distribution and Expenditures*

## **Fiscal Year 2010 Receipts**

Insurance Department Trust Fund.....	\$ 18,273,684
Federal Funds .....	530,722
Premium & Other Taxes.....	151,660,675
Licenses, Permits and Fees .....	<u>21,574,086</u>
	<b>\$192,039,167</b>

## **Distribution of Revenues**

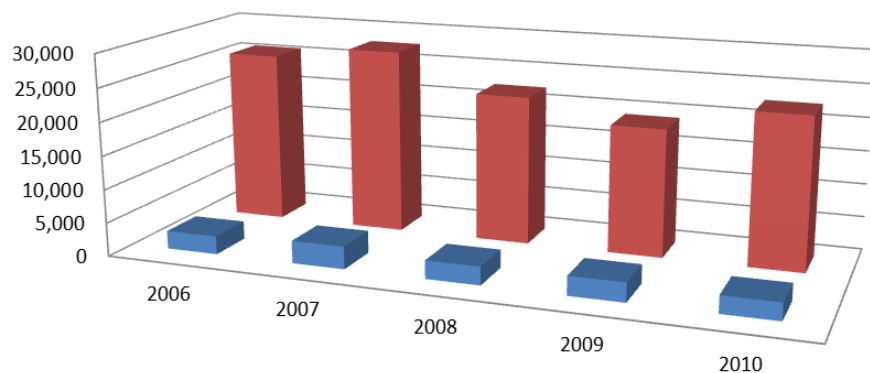
General Revenue .....	\$ 94, 625,220
Police & Firemen Pension Funds .....	47, 881,618
Insurance Department Funds .....	<u>49,532,329</u>
	<b>\$192,039,167</b>

## **Fiscal Year 2010 Expenditures**

Regulatory Services .....	<b>\$10,291,571</b>
---------------------------	---------------------

# AID Services

## Complaints and Inquiries



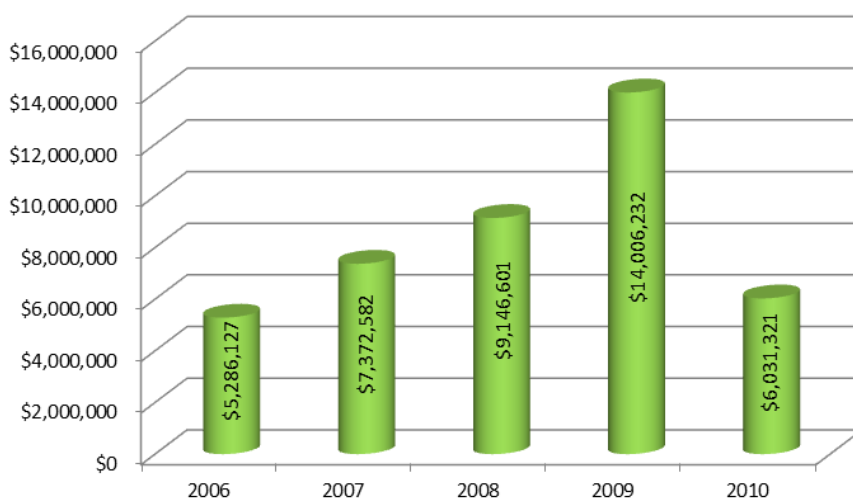
A complaint is a written grievance filed by an insurance consumer or their advocate with our Consumer Services Division (CSD).

Inquiries are informal questions answered by a CSD representative.

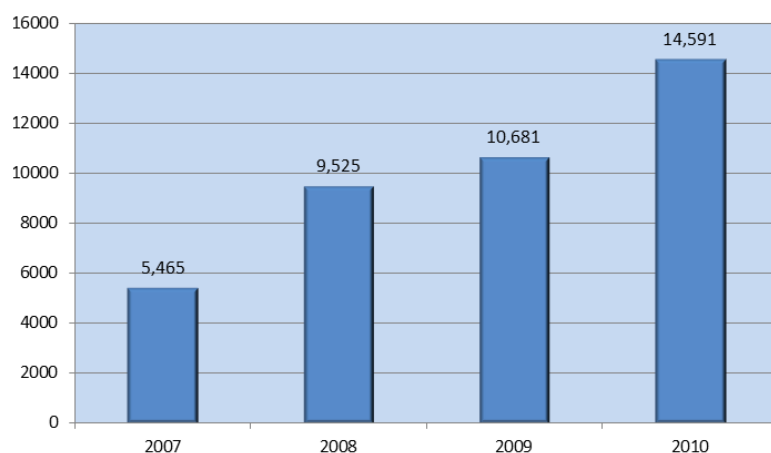
	2006	2007	2008	2009	2010
Complaints	2,721	3,379	2,731	2,864	2,584
Inquiries	25,924	27,819	22,353	19,207	22,810

## Recoveries

Recoveries are amounts recovered for consumers by CSD in excess of the amount initially offered by insurance companies.



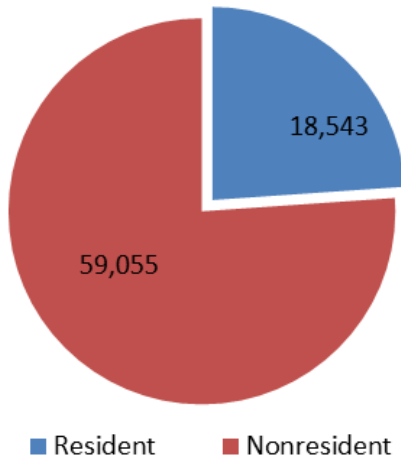
## Medicare Recipients Served



The Senior Health Insurance Information Program (SHIIP) provides Medicare counseling, education and assistance to Medicare beneficiaries and their caregivers.

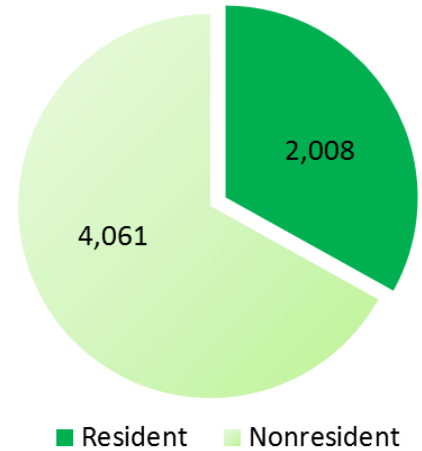
## ***Producers and Business Entities (Agents and Agencies)***

### ***Producers and Adjusters***



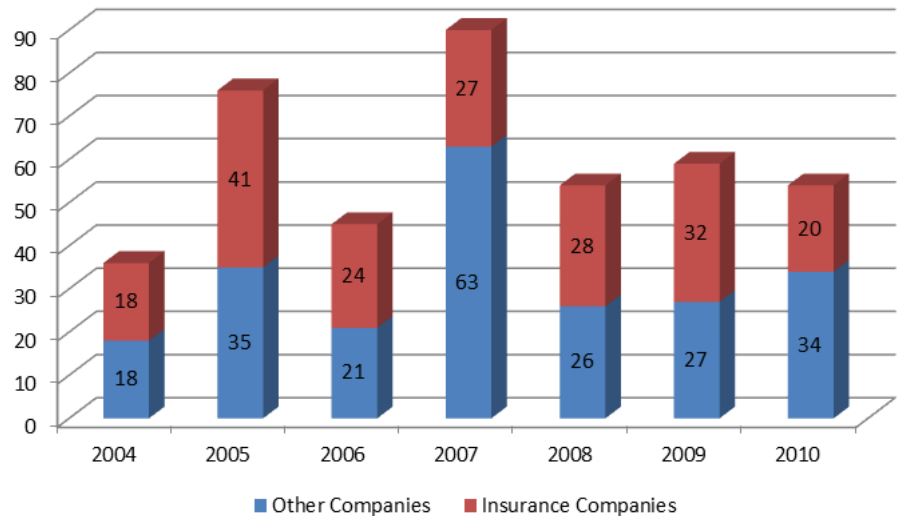
AID License Division licenses resident and nonresident producers, adjusters, title agents and business entities that are soliciting, selling or negotiating insurance in the State of Arkansas. "Resident" means the producer or business entity is based in Arkansas.

### ***Business Entities***



### ***New Company Admissions***

New company admissions are subject to in-depth analysis by our Finance Division. AID admitted 20 new insurance companies and 34 other companies in 2010. Other companies include automobile clubs, risk retention groups, charitable gift annuity organizations, service contract providers, Accredited/Trusted Reinsurers, and surplus lines.



### ***Total Licensed Companies***

<b>Licensed Insurance Companies</b> .....	<b>1,552</b>
Domestic (Arkansas) Insurers.....	63
Foreign Insurers .....	1,489
<b>Accredited/Trusted Reinsurers</b> .....	<b>35</b>
<b>Charitable Gift Annuity Organizations</b> .....	<b>173</b>
<b>Continuing Care Facilities</b> .....	<b>9</b>
<b>Automobile/Motor Club Associations</b> .....	<b>20</b>
<b>Reinsurance Intermediaries Brokers</b> .....	<b>16</b>
<b>Reinsurance Intermediaries Managers</b> .....	<b>4</b>
<b>Service Contract Providers</b> .....	<b>69</b>
<b>Surplus Lines Insurers</b> .....	<b>188</b>
Foreign .....	130
Alien (non U.S.A.) .....	58

# AID Examinations

## Financial Examinations

Domestic Life Companies.....	6
Domestic Property & Casualty Companies .....	4
Domestic Health Maintenance Organizations.....	0
Other Domestic Organizations .....	5

## Financial Analysis\*

Domestic Financial Reviews.....	314
Domestic Supplemental Filings Reviews .....	229
Holding Company & Other Filings Reviews.....	204

## Prepaid Funeral Benefits Contracts

Examinations Conducted .....	68
Number of Licenses.....	190
Reports Reviewed.....	950

## Insurance Fraud Investigations

Referrals Received .....	1,013
Cases Referred for Prosecution .....	49
Successful Prosecutions .....	21
Fines .....	\$15,450
Restitution .....	\$166,195

## Legal Proceedings\*\*

Bulletins Issued .....	10
Directives Issued .....	1
Orders Issued.....	103
Rules Finalized .....	5
Investigations Initiated .....	386
Investigations Closed .....	161
Fines and Penalties.....	\$288,724
Recoveries & Restitution for Arkansas Consumers.....	\$1,087,932
Multi-State Settlement (Allstate) .....	\$50,599
Company Mergers .....	20
Certificate of Authority Cancellations .....	6

## Liquidations and Rehabilitations\*\*

### A. *Liquidations* A.C.A. § 23-61-112(2).

No original actions were filed for liquidation of any domestic Arkansas insurance companies during the reporting year 2010.

### B. *Rehabilitations* A.C.A. § 23-61-112(3).

1) Gibraltar National Insurance Company, an Arkansas domiciled company, No. CV2010-1145, Petition to place company into rehabilitation due to financial insolvency. On May 21, 2010, the court granted the Receiver's petition to terminate the rehabilitation and place the company in liquidation. Assets at time of filing for liquidation \$1,382,488.24. Liabilities at time of filing for liquidation \$3,117,903.65. Presently, the estate remains in administration by the Receiver (see A. above).

\*Includes Annual and Quarterly Reviews

\*\*Department Bulletins, Directives, Public Orders, Rules and Court Orders of Rehabilitation/Liquidation are now available in electronic format at [www.insurance.arkansas.gov/Legal%20Dataservices/divpage.htm](http://www.insurance.arkansas.gov/Legal%20Dataservices/divpage.htm).

# *Insurers Listed by Arkansas Premium as of 12/31/2010*

## ***Farmers Mutual Aid Associations***

NAIC	Company Name	AR Premium	Market Share	Assets	Liabilities	Capital & Surplus
37613	Farmers Union Mutual Ins Co	\$8,360,025	51.22%	\$6,523,602	\$3,889,178	\$2,624,424
A2020	Farmers Mutual Ins Co Gentry	\$3,551,529	21.76%	\$12,633,730	\$3,374,512	\$9,259,218
A0012	Farmers Mutual Ins Rogers	\$1,146,953	7.03%	\$5,474,403	\$879,038	\$4,595,365
A0023	Washington County Farmers Mutual Fire	\$973,683	5.97%	\$24,674,838	\$1,298,177	\$23,376,661
A0010	Farmers Mutual Fire	\$869,032	5.32%	\$2,244,793	\$627,727	\$1,617,066
A0008	Farmers Fire Ins	\$800,431	4.90%	\$1,389,877	\$710,888	\$678,989
A0014	Farmers Protective Ins Co	\$380,007	2.33%	\$617,354	\$227,092	\$390,262
A0011	Farmers Mutual Ins of LR	\$209,223	1.28%	\$406,342	\$97,248	\$309,094
A0020	Logan County Farmers Mutual Aid	\$30,488	0.19%	\$1,924,386	\$30,488	\$1,893,897
<b>TOTAL</b>		<b>\$16,321,371</b>	<b>100.00%</b>			

## ***Fraternal Organizations***

NAIC	Company Name	AR Premium	Market Share	Assets	Liabilities	Capital & Surplus
57541	Modern Woodmen of Amer	\$51,469,331	45.13%	\$10,144,269,324	\$8,915,847,408	\$1,228,421,916
57320	Woodmen World Life Ins Soc	\$26,556,349	23.29%	\$8,570,567,800	\$7,671,064,644	\$899,503,156
56014	Thrivent Financial For Lutherans	\$22,423,314	19.66%	\$59,224,749,903	\$55,129,173,287	\$4,095,576,616
58033	Knights of Columbus	\$3,606,958	3.16%	\$16,861,960,910	\$15,132,007,737	\$1,729,953,173
56383	Order of United Commercial Travelers	\$3,220,494	2.82%	\$23,014,973	\$11,038,584	\$11,976,389
57657	Royal Neighbors of Amer	\$2,653,082	2.33%	\$765,792,458	\$537,381,785	\$228,410,673
58068	Independent Order of Foresters Us Br	\$2,046,688	1.79%	\$3,108,391,895	\$2,829,918,742	\$278,473,153
56499	Woodmen World Assur Life Assn	\$1,783,865	1.56%	\$56,483,875	\$44,724,713	\$11,759,162
56030	Catholic Financial Life	\$238,845	0.21%	\$1,196,641,433	\$1,170,541,485	\$26,099,948
56332	First Cath Slovak Ladies Assn USA	\$10,960	0.01%	\$635,734,094	\$546,216,178	\$89,517,916
57088	Degree of Honor Protective Assn	\$10,308	0.01%	\$194,864,844	\$188,964,486	\$5,900,358
57223	Baptist Life Assn	\$9,649	0.01%	\$31,716,414	\$31,208,862	\$507,552
57630	Polish Roman Catholic Union of Amer	\$3,785	0.00%	\$187,483,364	\$183,851,989	\$3,631,375
57622	Polish Natl Alliance US of NA	\$1,356	0.00%	\$446,322,672	\$418,880,443	\$27,442,229
56170	Womans Life Ins Society	\$695	0.00%	\$186,505,144	\$158,433,218	\$28,071,927
<b>TOTAL</b>		<b>\$114,035,679</b>	<b>100.00%</b>			

## ***Health Maintenance Organizations and Hospital, Medical, Dental Insurers***

NAIC	Company Name	AR Premium	Market Share	Assets	Liabilities	Capital & Surplus
95442	HMO Partners Inc	\$206,707,588	29.92%	\$142,757,661	\$47,131,354	\$95,626,307
95448	QCA Health Plan Inc	\$149,979,683	21.71%	\$44,770,829	\$21,607,233	\$23,163,596
12282	Arkansas Comm Care Inc	\$84,977,664	12.30%	\$28,693,079	\$10,130,596	\$18,562,483
47155	Delta Dental Plan of AR Inc	\$77,234,283	11.18%	\$74,194,521	\$12,762,825	\$61,431,696
95792	Windsor Health Plan Inc	\$66,219,573	9.59%	\$143,373,852	\$113,710,800	\$29,663,052
11529	Mercy Health Plans	\$41,283,717	5.98%	\$81,013,567	\$51,996,628	\$29,016,939
95885	Humana Health Plan Inc	\$28,317,106	4.10%	\$509,907,987	\$229,026,143	\$280,881,844
95446	United Healthcare of AR Inc	\$23,130,372	3.35%	\$10,555,982	\$4,064,104	\$6,491,878
13160	Physicians Health Choice of AR Inc	\$12,794,480	1.85%	\$3,170,567	\$144,871	\$3,025,696
11559	American Dental Providers of AR Inc	\$188,073	0.03%	\$450,251	\$58,763	\$391,488
<b>TOTAL</b>		<b>\$690,832,539</b>	<b>100.00%</b>			

## Life and Health

NAIC	Company Name	AR Premium	Market Share	Assets	Liabilities	Capital & Surplus
95442	HMO Partners Inc	\$206,707,588	29.92%	\$142,757,661	\$47,131,354	\$95,626,307
83470	USABLE Mut Ins Co	\$1,149,828,887	21.84%	\$1,138,981,649	\$566,934,783	\$572,046,866
79413	UnitedHealthcare Ins Co	\$316,475,626	6.01%	\$13,677,425,307	\$9,655,463,484	\$4,021,961,822
73288	Humana Ins Co	\$246,972,481	4.69%	\$4,864,669,884	\$2,258,103,827	\$2,606,566,057
65056	Jackson Natl Life Ins Co	\$159,318,204	3.03%	\$93,805,042,592	\$89,443,112,886	\$4,361,929,706
12567	Care Improvement Plus S Central Ins	\$138,443,506	2.63%	\$231,192,421	\$129,183,059	\$102,009,362
65978	Metropolitan Life Ins Co	\$126,918,340	2.41%	\$316,204,246,915	\$302,986,842,621	\$13,217,404,294
65838	John Hancock Life Ins Co (USA)	\$104,588,399	1.99%	\$214,163,190,328	\$208,986,516,551	\$5,176,673,777
69345	Teachers Ins & Ann Assoc of Amer	\$101,573,594	1.93%	\$214,544,169,119	\$189,388,404,961	\$25,155,764,158
65676	Lincoln Natl Life Ins Co	\$90,564,786	1.72%	\$158,433,198,169	\$151,967,630,703	\$6,465,567,466
61271	Principal Life Ins Co	\$88,608,403	1.68%	\$122,004,241,392	\$117,626,479,613	\$4,377,761,779
68896	Southern Farm Bureau Life Ins Co	\$79,562,289	1.51%	\$11,182,012,746	\$9,400,047,149	\$1,781,965,597
79227	Pruco Life Ins Co	\$79,232,400	1.51%	\$46,231,559,417	\$45,013,274,220	\$1,218,285,197
66869	Nationwide Life Ins Co	\$76,402,937	1.45%	\$95,838,821,062	\$92,153,303,186	\$3,685,517,876
60380	American Family Life Assur Co of Col	\$75,588,985	1.44%	\$89,723,267,205	\$82,983,481,502	\$6,739,785,703
61050	MetLife Investors USA Ins Co	\$74,571,524	1.42%	\$54,153,056,314	\$52,698,974,881	\$1,454,081,433
90611	Allianz Life Ins Co of N Amer	\$61,499,134	1.17%	\$84,464,206,882	\$79,869,019,158	\$4,595,187,724
65005	RiverSource Life Ins Co	\$60,000,215	1.14%	\$88,873,794,906	\$85,138,378,701	\$3,735,416,205
67660	Pennsylvania Life Ins Co	\$56,988,505	1.08%	\$789,283,812	\$520,415,636	\$268,868,176
94358	USABLE Life	\$55,840,824	1.06%	\$334,173,239	\$196,701,669	\$137,471,570
70238	Variable Ann Life Ins Co	\$54,269,892	1.03%	\$63,975,360,196	\$60,175,076,536	\$3,800,283,660
67091	Northwestern Mut Life Ins Co	\$53,487,192	1.02%	\$179,289,365,990	\$164,904,133,968	\$14,385,232,022
68241	Prudential Ins Co of Amer	\$52,527,731	1.00%	\$233,140,797,926	\$224,776,562,489	\$8,364,235,437
62235	Unum Life Ins Co of Amer	\$52,114,055	0.99%	\$17,822,750,751	\$16,283,123,409	\$1,539,627,342
92738	American Equity Invest Life Ins Co	\$51,629,899	0.98%	\$21,125,501,127	\$19,724,816,152	\$1,400,684,975
69108	State Farm Life Ins Co	\$49,163,354	0.93%	\$50,996,175,901	\$44,793,729,452	\$6,202,446,449
86231	Transamerica Life Ins Co	\$48,641,335	0.92%	\$106,886,675,813	\$102,588,552,026	\$4,298,123,787
61689	Aviva Life & Ann Co	\$46,761,191	0.89%	\$45,603,044,481	\$43,246,970,523	\$2,356,073,958
66915	New York Life Ins Co	\$46,549,928	0.88%	\$122,007,530,370	\$107,290,683,935	\$14,716,846,435
68284	Pyramid Life Ins Co	\$45,800,087	0.87%	\$477,222,801	\$238,174,052	\$239,048,749
68136	Protective Life Ins Co	\$45,428,030	0.86%	\$28,616,444,355	\$25,994,869,488	\$2,621,574,867
88072	Hartford Life Ins Co	\$42,740,809	0.81%	\$148,900,298,076	\$143,068,772,089	\$5,831,525,987
60054	Aetna Life Ins Co	\$40,005,337	0.76%	\$21,237,425,146	\$17,055,047,213	\$4,182,377,933
68608	Symetra Life Ins Co	\$38,116,772	0.72%	\$23,192,365,853	\$21,440,060,953	\$1,752,304,900
70815	Hartford Life & Accident Ins Co	\$35,828,998	0.68%	\$14,950,730,841	\$8,373,651,433	\$6,577,079,408
91596	New York Life Ins & Ann Corp	\$34,153,318	0.65%	\$97,717,131,064	\$92,292,865,888	\$5,424,265,176
62308	Connecticut Gen Life Ins Co	\$32,573,774	0.62%	\$20,055,457,384	\$17,040,952,884	\$3,014,504,500
69868	United of Omaha Life Ins Co	\$31,801,272	0.60%	\$15,119,798,408	\$13,909,619,189	\$1,210,179,219
67466	Pacific Life Ins Co	\$31,785,178	0.60%	\$98,780,897,669	\$92,914,208,696	\$5,866,688,974
86509	ING Life Ins & Ann Co	\$30,891,511	0.59%	\$68,943,230,012	\$67,275,899,622	\$1,667,330,390
65757	Shelter Life Ins Co	\$28,156,613	0.53%	\$961,345,826	\$797,237,314	\$164,108,513
86630	Prudential Ann Life Assur Corp	\$25,924,188	0.49%	\$54,688,168,180	\$53,752,272,154	\$935,896,026
71153	Hartford Life & Ann Ins Co	\$24,981,589	0.47%	\$73,626,921,220	\$69,564,382,116	\$4,062,539,104
66044	Midland Natl Life Ins Co	\$24,918,842	0.47%	\$28,627,802,353	\$26,988,077,760	\$1,639,724,593
70670	Health Care Serv Corp A Mut Legal Re	\$21,819,920	0.41%	\$12,718,574,391	\$4,925,038,007	\$7,793,536,383
60410	American Fidelity Assur Co	\$20,667,202	0.39%	\$3,780,923,579	\$3,493,702,682	\$287,220,897
62286	Golden Rule Ins Co	\$20,353,584	0.39%	\$694,018,764	\$389,221,413	\$304,797,351
60739	American Natl Ins Co	\$19,273,818	0.37%	\$16,438,191,243	\$14,484,042,187	\$1,954,149,056
70688	Transamerica Financial Life Ins Co	\$18,918,743	0.36%	\$24,312,485,405	\$23,517,817,917	\$794,667,488
70025	Genworth Life Ins Co	\$18,732,195	0.36%	\$33,585,118,972	\$30,601,566,325	\$2,983,552,647
66850	National Western Life Ins Co	\$18,714,114	0.36%	\$7,782,947,712	\$6,904,496,638	\$878,451,074
62944	AXA Equitable Life Ins Co	\$18,608,421	0.35%	\$135,726,109,289	\$131,924,824,045	\$3,801,285,244
92916	United Amer Ins Co	\$17,475,927	0.33%	\$1,698,071,608	\$1,431,870,922	\$266,200,686
61263	Bankers Life & Casualty Co	\$17,245,733	0.33%	\$13,753,678,780	\$12,979,002,509	\$774,676,271

## Life and Health (Cont.)

NAIC	Company Name	AR Premium	Market Share	Assets	Liabilities	Capital & Surplus
64246	Guardian Life Ins Co of Amer	\$16,973,775	0.32%	\$33,178,003,056	\$28,747,042,839	\$4,430,960,217
66168	Minnesota Life Ins Co	\$16,818,190	0.32%	\$25,492,612,253	\$23,553,397,301	\$1,939,214,952
80942	ING USA Ann & Life Ins Co	\$16,412,398	0.31%	\$73,377,046,115	\$71,652,350,258	\$1,724,695,857
60941	SunAmerica Ann & Life Assur Co	\$15,786,814	0.30%	\$27,022,463,021	\$26,188,388,895	\$834,074,126
77399	Sterling Life Ins Co	\$15,646,943	0.30%	\$271,998,657	\$123,961,122	\$148,037,535
69019	Standard Ins Co	\$15,137,372	0.29%	\$15,616,840,023	\$14,445,326,207	\$1,171,513,816
60534	American Heritage Life Ins Co	\$15,133,293	0.29%	\$1,518,380,626	\$1,263,358,531	\$255,022,095
68195	Provident Life & Accident Ins Co	\$14,898,492	0.28%	\$8,271,622,452	\$7,616,990,948	\$654,631,504
69663	USAA Life Ins Co	\$14,774,387	0.28%	\$16,815,590,641	\$15,330,083,060	\$1,485,507,581
65536	Genworth Life & Ann Ins Co	\$14,478,464	0.28%	\$25,149,350,551	\$23,372,755,234	\$1,776,595,317
63274	OM Fin Life Ins Co	\$14,442,704	0.27%	\$16,386,057,523	\$15,483,939,380	\$902,118,143
67105	Reliastar Life Ins Co	\$14,385,510	0.27%	\$20,811,446,503	\$18,733,298,962	\$2,078,147,541
62626	Cuna Mut Ins Society	\$14,313,991	0.27%	\$13,330,405,751	\$11,975,589,106	\$1,354,816,645
63177	Farmers New World Life Ins Co	\$13,780,089	0.26%	\$6,858,768,936	\$6,187,234,547	\$671,534,389
60488	American Gen Life Ins Co	\$13,687,132	0.26%	\$41,582,692,391	\$34,970,607,351	\$6,612,085,040
62049	Colonial Life & Accident Ins Co	\$13,238,376	0.25%	\$2,300,052,819	\$1,808,314,556	\$491,738,263
92711	HCC Life Ins Co	\$13,206,565	0.25%	\$608,334,420	\$217,997,143	\$390,337,277
64467	Wellcare Health Ins of IL Inc	\$13,163,090	0.25%	\$56,269,389	\$14,430,734	\$41,838,655
92622	Western Southern Life Assur Co	\$12,944,038	0.25%	\$11,725,339,580	\$10,693,006,148	\$1,032,333,432
66672	American Gen Life & Acc Ins Co	\$12,927,860	0.25%	\$9,636,966,660	\$8,796,214,533	\$840,752,127
93513	MetLife Investors Ins Co	\$12,798,647	0.24%	\$13,065,144,443	\$12,566,559,716	\$498,584,727
65595	Lincoln Benefit Life Co	\$12,536,548	0.24%	\$2,396,597,118	\$2,085,766,867	\$310,830,251
68381	Reliance Standard Life Ins Co	\$12,294,333	0.23%	\$4,193,818,934	\$3,663,256,099	\$530,562,835
83836	Selected Funeral & Life Ins Co	\$12,178,889	0.23%	\$152,272,290	\$129,809,531	\$22,462,759
80314	Unicare Life & Health Ins Co	\$10,909,545	0.21%	\$971,857,382	\$802,952,657	\$168,904,725
65935	Massachusetts Mut Life Ins Co	\$10,895,343	0.21%	\$129,290,315,834	\$118,937,915,367	\$10,352,400,467
66974	North Amer Co Life & Health Ins	\$10,886,653	0.21%	\$10,363,207,918	\$9,596,233,547	\$766,974,372
65919	Primerica Life Ins Co	\$10,769,714	0.20%	\$1,777,592,448	\$1,147,750,163	\$629,842,285
63762	Medco Containment Life Ins Co	\$9,963,247	0.19%	\$260,085,594	\$121,536,461	\$138,549,133
69477	Time Ins Co	\$9,911,761	0.19%	\$748,260,818	\$473,791,837	\$274,468,981
68357	Reliable Life Ins Co	\$9,293,262	0.18%	\$21,514,088	\$9,114,517	\$12,399,572
81973	Coventry Health & Life Ins Co	\$9,111,721	0.17%	\$711,799,803	\$314,903,333	\$396,896,470
68322	Great W Life & Ann Ins Co	\$9,001,958	0.17%	\$45,084,620,875	\$43,931,966,818	\$1,152,654,057
70211	Reassure Amer Life Ins Co	\$8,939,318	0.17%	\$15,742,673,608	\$15,093,530,060	\$649,143,548
63312	Great Amer Life Ins Co	\$8,787,681	0.17%	\$11,470,510,707	\$10,479,654,780	\$990,855,927
91472	Globe Life & Accident Ins Co	\$8,718,469	0.17%	\$3,029,553,612	\$2,610,978,611	\$418,575,001
71412	Mutual of Omaha Ins Co	\$8,502,258	0.16%	\$5,239,903,732	\$2,659,064,754	\$2,580,838,978
66281	Monumental Life Ins Co	\$8,369,362	0.16%	\$32,851,172,044	\$31,676,748,890	\$1,174,423,154
80802	US Br SunLife Assur Co of Canada	\$8,041,576	0.15%	\$16,039,271,041	\$15,148,496,272	\$890,774,769
65315	Liberty Life Assur Co of Boston	\$7,993,264	0.15%	\$14,160,737,501	\$13,523,084,107	\$637,653,394
79065	Sun Life Assur Co of Canada US	\$7,981,723	0.15%	\$48,259,078,119	\$46,379,221,849	\$1,879,856,270
72850	United World Life Ins Co	\$7,927,795	0.15%	\$101,016,096	\$55,645,223	\$45,370,873
89206	Ohio Natl Life Assur Corp	\$7,863,990	0.15%	\$3,169,590,595	\$2,918,413,310	\$251,177,285
67644	Penn Mut Life Ins Co	\$7,642,587	0.15%	\$12,217,488,051	\$10,696,556,336	\$1,520,931,715
91642	Forethought Life Ins Co	\$7,552,830	0.14%	\$4,939,549,746	\$4,522,207,642	\$417,342,104
60895	American United Life Ins Co	\$7,353,758	0.14%	\$16,537,474,423	\$15,725,259,540	\$812,214,883
88668	Mutual of Amer Life Ins Co	\$7,153,753	0.14%	\$13,656,895,024	\$12,822,247,297	\$834,647,727
65021	Stonebridge Life Ins Co	\$7,086,192	0.13%	\$2,157,569,217	\$1,789,036,607	\$368,532,610
62146	Combined Ins Co of Amer	\$7,010,147	0.13%	\$2,543,794,461	\$1,802,130,459	\$741,664,002
68632	Vantis Life Ins Co	\$6,985,926	0.13%	\$898,680,968	\$827,624,464	\$71,056,504
90328	First Health Life & Health Ins Co	\$6,856,119	0.13%	\$592,366,635	\$263,069,781	\$329,296,854
66583	National Guardian Life Ins Co	\$6,687,393	0.13%	\$2,043,181,390	\$1,846,816,237	\$196,365,153
70335	West Coast Life Ins Co	\$6,410,637	0.12%	\$3,827,235,297	\$3,183,137,243	\$644,098,054
83968	Citizens Fidelity Ins Co	\$6,345,155	0.12%	\$57,276,924	\$49,707,314	\$7,569,610

## ***Life and Health (Cont.)***

NAIC	Company Name	AR Premium	Market Share	Assets	Liabilities	Capital & Surplus
97055	Mega Life & Health Ins Co The	\$6,195,845	0.12%	\$590,842,165	\$299,068,882	\$291,773,283
65498	Life Ins Co of N Amer	\$6,182,329	0.12%	\$5,815,739,495	\$4,973,997,428	\$841,742,067
87726	Metlife Ins Co of CT	\$6,146,619	0.12%	\$68,696,975,461	\$63,592,122,635	\$5,104,852,826
70319	Washington Natl Ins Co	\$5,929,704	0.11%	\$4,911,662,535	\$4,419,862,519	\$491,800,016
77968	Family Heritage Life Ins Co of Amer	\$5,767,076	0.11%	\$431,934,801	\$383,603,666	\$48,331,135
12321	American Continental Ins Co	\$5,661,324	0.11%	\$61,338,959	\$22,693,477	\$38,645,482
67172	Ohio Natl Life Ins Co	\$5,442,439	0.10%	\$17,968,158,037	\$17,107,457,137	\$860,700,900
65129	Kansas City Life Ins Co	\$5,381,431	0.10%	\$3,235,013,316	\$2,912,554,213	\$322,459,103
68713	Security Life of Denver Ins Co	\$5,096,576	0.10%	\$19,251,314,679	\$17,794,275,352	\$1,457,039,327
78778	Guardian Ins & Ann Co Inc	\$5,049,059	0.10%	\$10,072,538,662	\$9,831,359,037	\$241,179,625
61883	Central United Life Ins Co	\$4,993,701	0.09%	\$321,772,192	\$267,916,714	\$53,855,478
60186	Allstate Life Ins Co	\$4,977,176	0.09%	\$58,763,010,092	\$55,423,872,993	\$3,339,137,098
68462	Reserve Natl Ins Co	\$4,774,518	0.09%	\$109,280,877	\$59,103,757	\$50,177,121
84034	First Guar Ins Co	\$4,763,793	0.09%	\$49,780,373	\$45,154,045	\$4,626,328
66427	MTL Ins Co	\$4,720,502	0.09%	\$1,509,262,084	\$1,412,851,981	\$96,410,103
70939	Gerber Life Ins Co	\$4,589,842	0.09%	\$1,901,133,895	\$1,688,091,278	\$213,042,617
73881	American Life & Annuity Co	\$4,434,560	0.08%	\$42,083,546	\$40,118,981	\$1,964,565
60076	Security Plan Life Ins Co	\$4,394,648	0.08%	\$300,156,091	\$251,720,499	\$48,435,591
12575	SilverScript Ins Co	\$4,378,150	0.08%	\$361,971,473	\$222,333,553	\$139,637,920
93548	PHL Variable Ins Co	\$4,369,520	0.08%	\$4,778,696,110	\$4,502,998,449	\$275,697,661
62510	Equitrust Life Ins Co	\$4,187,804	0.08%	\$7,360,738,230	\$6,909,246,090	\$451,492,140
65927	Lincoln Heritage Life Ins Co	\$3,985,452	0.08%	\$762,114,501	\$661,569,690	\$100,544,811
74365	Southern Pioneer Life Ins Co	\$3,919,343	0.07%	\$24,643,427	\$13,447,437	\$11,195,990
65080	John Alden Life Ins Co	\$3,823,654	0.07%	\$472,426,896	\$371,706,837	\$100,720,059
70432	Western Natl Life Ins Co	\$3,764,310	0.07%	\$44,568,634,203	\$41,059,789,555	\$3,508,844,648
92657	Nationwide Life & Ann Ins Co	\$3,721,915	0.07%	\$5,431,244,774	\$5,144,032,326	\$287,212,448
70106	United States Life Ins Co In NYC	\$3,660,011	0.07%	\$11,591,715,992	\$10,424,269,339	\$1,167,446,653
60984	Compbenefits Ins Co	\$3,585,310	0.07%	\$49,887,284	\$14,222,082	\$35,665,202
87963	National Teachers Assoc Life Ins Co	\$3,312,899	0.06%	\$309,357,588	\$264,877,594	\$44,479,994
65242	Lafayette Life Ins Co	\$3,305,644	0.06%	\$2,598,700,309	\$2,486,660,149	\$112,040,160
64017	Jefferson Natl Life Ins Co	\$3,281,065	0.06%	\$1,768,474,341	\$1,737,160,220	\$31,314,121
60577	American Income Life Ins Co	\$3,273,452	0.06%	\$2,136,407,531	\$1,936,335,115	\$200,072,416
67539	Pan Amer Life Ins Co	\$3,218,963	0.06%	\$1,487,680,007	\$1,230,932,873	\$256,747,134
80578	Physicians Mut Ins Co	\$3,213,078	0.06%	\$1,641,087,536	\$816,517,486	\$824,570,050
63479	United Teacher Assoc Ins Co	\$3,179,964	0.06%	\$771,956,870	\$702,877,027	\$69,079,843
81108	United Security Life & Health Ins Co	\$3,168,950	0.06%	\$20,892,341	\$17,250,167	\$3,642,174
94250	Banner Life Ins Co	\$3,151,926	0.06%	\$1,918,462,877	\$1,242,986,794	\$675,476,083
62952	Equitable Life & Cas Ins Co	\$3,016,940	0.06%	\$215,770,779	\$186,312,777	\$29,458,002
65900	Conseco Life Ins Co	\$2,968,630	0.06%	\$4,272,809,236	\$4,169,157,742	\$103,651,495
80837	Union Central Life Ins Co	\$2,950,770	0.06%	\$6,925,943,166	\$6,525,544,260	\$400,398,906
65331	Liberty Natl Life Ins Co	\$2,938,252	0.06%	\$6,954,204,736	\$6,001,014,083	\$953,190,653
74900	Brokers Natl Life Assur Co	\$2,838,026	0.05%	\$25,395,006	\$9,237,746	\$16,157,260
61301	Ameritas Life Ins Corp	\$2,791,164	0.05%	\$7,124,569,433	\$5,793,692,846	\$1,330,876,587
63665	General Amer Life Ins Co	\$2,785,355	0.05%	\$11,178,237,934	\$10,234,264,625	\$943,973,309
67814	Phoenix Life Ins Co	\$2,730,057	0.05%	\$14,425,706,152	\$13,767,248,683	\$658,457,469
61492	Liberty Life Ins Co	\$2,649,630	0.05%	\$4,995,353,912	\$4,717,390,447	\$277,963,465
91529	Unimerica Ins Co	\$2,631,009	0.05%	\$264,232,349	\$131,171,544	\$133,060,805
67989	American Memorial Life Ins Co	\$2,595,131	0.05%	\$2,107,922,905	\$1,999,602,183	\$108,320,722
70408	Union Security Ins Co	\$2,568,301	0.05%	\$5,529,400,728	\$5,079,786,066	\$449,614,662
72125	Physicians Life Ins Co	\$2,541,188	0.05%	\$1,257,469,499	\$1,151,347,634	\$106,121,865
85561	Perico Life Ins Co	\$2,508,571	0.05%	\$70,757,582	\$20,359,312	\$50,398,270
93696	Fidelity Investments Life Ins Co	\$2,508,029	0.05%	\$16,672,983,973	\$15,933,684,409	\$739,299,564
61476	Boston Mut Life Ins Co	\$2,489,148	0.05%	\$1,048,910,375	\$930,127,030	\$118,783,345
69396	Texas Life Ins Co	\$2,480,661	0.05%	\$779,597,826	\$726,532,120	\$53,065,706

## Life and Health (Cont.)

NAIC	Company Name	AR Premium	Market Share	Assets	Liabilities	Capital & Surplus
80926	Sun Life & Health Ins Co	\$2,470,138	0.05%	\$65,728,255	\$23,445,063	\$42,283,192
62065	Colonial Penn Life Ins Co	\$2,450,544	0.05%	\$733,759,228	\$660,494,799	\$73,264,429
62928	EMC Natl Life Co	\$2,450,502	0.05%	\$1,024,754,005	\$948,878,609	\$75,875,396
68810	Sentry Life Ins Co	\$2,389,487	0.05%	\$3,732,027,113	\$3,456,381,141	\$275,645,973
98205	National Found Life Ins Co	\$2,380,321	0.05%	\$35,022,374	\$26,069,398	\$8,952,976
63258	Federated Life Ins Co	\$2,354,866	0.04%	\$1,099,178,718	\$851,670,216	\$247,508,503
66141	Health Net Life Ins Co	\$2,314,574	0.04%	\$680,510,059	\$266,019,860	\$414,490,199
67598	Paul Revere Life Ins Co	\$2,267,842	0.04%	\$4,678,402,839	\$4,258,900,381	\$419,502,458
60836	American Republic Ins Co	\$2,156,853	0.04%	\$537,807,917	\$272,926,908	\$264,881,009
76236	Cincinnati Life Ins Co	\$2,099,641	0.04%	\$3,165,185,490	\$2,862,222,335	\$302,963,155
84530	US Financial Life Ins Co	\$1,993,599	0.04%	\$621,287,891	\$550,305,284	\$70,982,607
69000	Northwestern Long Term Care Ins Co	\$1,849,928	0.04%	\$926,197,529	\$776,549,312	\$149,648,217
12902	Healthspring Life & Health Ins Co Inc	\$1,812,775	0.03%	\$265,076,775	\$124,010,442	\$141,066,333
83860	American Home Life Ins Co	\$1,790,494	0.03%	\$16,333,649	\$15,675,755	\$657,894
91626	New England Life Ins Co	\$1,747,073	0.03%	\$11,085,508,825	\$10,493,512,146	\$591,996,679
12231	UnitedHealthcare Ins Co of the River	\$1,735,592	0.03%	\$29,751,703	\$18,213,916	\$11,537,787
71714	Berkshire Life Ins Co of Amer	\$1,708,224	0.03%	\$2,814,669,327	\$2,320,894,330	\$493,774,997
68543	Liberty Bankers Life Ins Co	\$1,670,493	0.03%	\$1,113,571,855	\$1,027,706,378	\$85,865,477
65528	Life Ins Co of The Southwest	\$1,660,758	0.03%	\$9,165,314,382	\$8,613,838,106	\$551,476,276
77879	5 Star Life Ins Co	\$1,655,545	0.03%	\$202,943,444	\$150,154,482	\$52,788,962
67199	Old Amer Ins Co	\$1,640,183	0.03%	\$240,041,436	\$221,644,676	\$18,396,760
61190	Auto Owners Life Ins Co	\$1,634,649	0.03%	\$2,735,645,659	\$2,484,770,218	\$250,875,441
69930	United Ins Co of Amer	\$1,633,193	0.03%	\$3,387,913,267	\$2,982,457,457	\$405,455,810
61999	Americo Fin Life & Ann Ins Co	\$1,620,291	0.03%	\$3,628,279,596	\$3,275,665,377	\$352,614,219
71129	Fort Dearborn Life Ins Co	\$1,613,357	0.03%	\$3,077,217,147	\$2,625,719,994	\$451,497,153
63983	United Heritage Life Ins Co	\$1,609,651	0.03%	\$465,634,475	\$419,420,845	\$46,213,631
65412	Life Ins Co of AL	\$1,607,481	0.03%	\$96,594,996	\$73,767,855	\$22,827,141
83992	Foundation Life Ins Co of AR	\$1,583,399	0.03%	\$6,474,823	\$5,009,073	\$1,465,750
77828	Companion Life Ins Co	\$1,519,648	0.03%	\$160,085,492	\$68,266,379	\$91,819,114
61921	Citizens Security Life Ins Co	\$1,509,030	0.03%	\$26,085,055	\$14,557,546	\$11,527,509
60801	American Public Life Ins Co	\$1,495,767	0.03%	\$77,968,553	\$59,477,520	\$18,491,033
71730	Continental Amer Ins Co	\$1,479,831	0.03%	\$116,795,676	\$85,254,484	\$31,541,192
71870	Fidelity Security Life Ins Co	\$1,453,774	0.03%	\$664,364,827	\$554,945,918	\$109,418,909
60142	TIAA Cref Life Ins Co	\$1,399,200	0.03%	\$3,570,994,624	\$3,200,413,334	\$370,581,290
81779	Individual Assur Co Life Health & Acc	\$1,393,991	0.03%	\$44,746,383	\$34,446,175	\$10,300,208
86118	Arkansas Bankers Life Ins Co	\$1,390,947	0.03%	\$4,499,381	\$2,536,075	\$1,963,306
66370	Mony Life Ins Co	\$1,386,577	0.03%	\$8,795,001,814	\$8,227,780,752	\$567,221,062
97136	Metropolitan Tower Life Ins Co	\$1,369,204	0.03%	\$4,953,820,850	\$4,149,306,363	\$804,514,487
74780	Integrity Life Ins Co	\$1,365,422	0.03%	\$5,909,710,570	\$5,380,500,550	\$529,210,020
89184	Sterling Investors Life Ins Co	\$1,364,058	0.03%	\$18,550,295	\$11,158,752	\$7,391,543
93432	CM Life Ins Co	\$1,362,779	0.03%	\$8,427,843,165	\$7,590,656,649	\$837,186,516
68845	Shenandoah Life Ins Co	\$1,347,236	0.03%	\$1,439,202,515	\$1,424,198,256	\$15,004,259
68675	Security Benefit Life Ins Co	\$1,346,542	0.03%	\$9,921,640,380	\$9,306,537,650	\$615,102,730
93262	Penn Ins & Ann Co	\$1,341,165	0.03%	\$1,275,848,716	\$1,170,728,301	\$105,120,415
68373	American Gen Assur Co	\$1,338,121	0.03%	\$190,306,648	\$84,254,067	\$106,052,581
64211	Guarantee Trust Life Ins Co	\$1,269,782	0.02%	\$257,985,483	\$217,843,005	\$40,142,478
70629	World Ins Co	\$1,265,064	0.02%	\$275,063,491	\$160,907,805	\$114,155,686
71439	Assurity Life Ins Co	\$1,225,569	0.02%	\$2,326,324,501	\$2,069,441,015	\$256,883,486
78077	Mony Life Ins Co of Amer	\$1,185,172	0.02%	\$4,122,366,099	\$3,894,500,727	\$227,865,372
66214	Heartland Natl Life Ins Co	\$1,154,329	0.02%	\$6,289,270	\$2,453,906	\$3,835,364
61751	Central States H & L Co of Omaha	\$1,117,153	0.02%	\$331,408,787	\$229,126,154	\$102,282,633
63967	Government Personnel Mut Life Ins Co	\$1,115,785	0.02%	\$821,198,032	\$729,149,963	\$92,048,069
76112	Oxford Life Ins Co	\$1,102,296	0.02%	\$572,311,637	\$445,489,810	\$126,821,827
67652	First Penn Pacific Life Ins Co	\$1,093,291	0.02%	\$1,894,354,076	\$1,689,407,779	\$204,946,297

## Life and Health (Cont.)

NAIC	Company Name	AR Premium	Market Share	Assets	Liabilities	Capital & Surplus
60763	American Pioneer Life Ins Co	\$1,059,198	0.02%	\$78,124,352	\$58,283,898	\$19,840,454
76325	Senior Health Ins Co of PA	\$1,055,786	0.02%	\$3,317,023,144	\$3,139,708,226	\$177,314,918
69485	Security Natl Life Ins Co	\$1,052,984	0.02%	\$370,387,379	\$349,225,541	\$21,161,838
66087	Mid West Natl Life Ins Co of TN	\$1,050,449	0.02%	\$177,238,360	\$81,272,567	\$95,965,793
65722	Loyal Amer Life Ins Co	\$1,049,532	0.02%	\$452,928,452	\$415,044,506	\$37,883,946
69078	Standard Security Life Ins Co of NY	\$1,040,671	0.02%	\$363,526,431	\$254,261,995	\$109,264,436
64939	Investors Ins Corp	\$1,040,456	0.02%	\$313,739,893	\$280,411,175	\$33,328,718
67393	Ozark Natl Life Ins Co	\$991,743	0.02%	\$669,043,716	\$554,163,594	\$114,880,122
70548	Wichita Natl Life Ins Co	\$985,941	0.02%	\$18,470,391	\$10,695,076	\$7,775,315
60305	American Comm Mut Ins Co	\$985,464	0.02%	\$46,647,188	\$28,721,109	\$17,926,079
86355	Standard Life & Accident Ins Co	\$963,398	0.02%	\$512,939,868	\$290,413,169	\$222,526,699
71390	Admiral Life Ins Co of Amer	\$960,230	0.02%	\$11,992,072	\$2,737,019	\$9,255,053
10161	Fox Ins Co	\$943,200	0.02%	\$8,175,246	\$4,368,754	\$3,806,492
64513	Horace Mann Life Ins Co	\$941,421	0.02%	\$5,554,461,199	\$5,231,598,338	\$322,862,861
65110	Kanawha Ins Co	\$909,189	0.02%	\$1,109,036,432	\$1,028,203,608	\$80,832,824
84115	Jackson Griffin Ins Co	\$907,089	0.02%	\$10,474,150	\$9,495,648	\$978,502
67180	Ohio State Life Ins Co	\$900,450	0.02%	\$11,603,430	\$2,499,014	\$9,104,416
61425	Trustmark Ins Co	\$896,233	0.02%	\$1,234,273,138	\$996,482,487	\$237,790,651
81418	American Medical & Life Ins Co	\$891,072	0.02%	\$21,548,456	\$12,032,202	\$9,516,254
83798	Memorial Ins Co of Amer	\$883,838	0.02%	\$1,193,808	\$107,620	\$1,086,187
91413	Western Reserve Life Assur Co of OH	\$870,911	0.02%	\$9,497,886,339	\$8,986,621,846	\$511,264,493
62359	Constitution Life Ins Co	\$857,905	0.02%	\$62,944,599	\$25,712,693	\$37,231,906
76023	Columbian Life Ins Co	\$853,844	0.02%	\$256,293,925	\$236,761,604	\$19,532,321
63444	Accendo Ins Co	\$847,237	0.02%	\$110,958,013	\$43,602,373	\$67,355,640
61832	Chesapeake Life Ins Co	\$843,733	0.02%	\$60,608,217	\$15,883,049	\$44,725,168
93661	Annuity Investors Life Ins Co	\$842,126	0.02%	\$2,440,028,453	\$2,298,016,313	\$142,012,140
97705	Direct Gen Life Ins Co	\$830,324	0.02%	\$26,793,399	\$11,956,971	\$14,836,428
93440	HM Life Ins Co	\$808,009	0.02%	\$415,173,191	\$226,015,069	\$189,158,122
76694	London Life Reins Co	\$807,146	0.02%	\$515,576,240	\$443,934,430	\$71,641,810
93629	Prudential Retirement Ins & Ann Co	\$803,384	0.02%	\$65,837,762,245	\$64,558,924,990	\$1,278,837,255
67326	Old Surety Life Ins Co	\$802,415	0.02%	\$19,956,958	\$11,629,196	\$8,327,762
60275	American Bankers Life Assur Co of FL	\$802,182	0.02%	\$626,532,264	\$538,462,927	\$88,069,337
63053	Family Life Ins Co	\$785,334	0.01%	\$130,287,481	\$100,970,107	\$29,317,374
62324	Freedom Life Ins Co of Amer	\$782,965	0.01%	\$31,423,839	\$17,461,334	\$13,962,505
65781	Madison Natl Life Ins Co Inc	\$776,567	0.01%	\$801,707,676	\$627,536,306	\$174,171,370
71854	AAA Life Ins Co	\$734,975	0.01%	\$437,929,085	\$354,208,880	\$83,720,205
84174	Employees Life Co Mut	\$734,311	0.01%	\$384,835,117	\$359,815,331	\$25,019,786
65811	American Modern Life Ins Co	\$733,967	0.01%	\$62,645,477	\$41,502,847	\$21,142,630
73474	Dentegra Ins Co	\$723,422	0.01%	\$29,714,336	\$13,246,739	\$16,467,597
69914	Sears Life Ins Co	\$711,890	0.01%	\$88,975,598	\$23,504,463	\$65,471,135
71773	American Natl Life Ins Co of TX	\$706,976	0.01%	\$124,515,244	\$95,974,065	\$28,541,179
84824	Commonwealth Ann & Life Ins Co	\$705,063	0.01%	\$6,755,658,499	\$6,344,045,527	\$411,612,972
69116	State Life Ins Co	\$653,288	0.01%	\$3,646,681,091	\$3,424,998,536	\$221,682,555
71072	Marquette Natl Life Ins Co	\$647,328	0.01%	\$8,744,430	\$3,401,566	\$5,342,864
61360	Reliastar Life Ins Co of NY	\$646,288	0.01%	\$3,364,508,651	\$3,044,312,515	\$320,196,136
63290	Fidelity Life Assn A Legal Reserve L	\$634,143	0.01%	\$480,524,498	\$284,161,821	\$196,362,677
60445	Sagcor Life Ins Co	\$621,209	0.01%	\$791,969,942	\$745,645,386	\$46,324,556
60542	American Home Life Ins Co	\$611,976	0.01%	\$198,785,678	\$183,185,343	\$15,600,335
68985	Starmount Life Ins Co	\$589,640	0.01%	\$37,472,626	\$20,694,000	\$16,778,626
68039	Presidential Life Ins Co	\$581,651	0.01%	\$3,627,334,894	\$3,354,303,512	\$273,031,382
68500	Continental Life Ins Co Brentwood	\$571,875	0.01%	\$143,867,260	\$84,877,650	\$58,989,610
70580	Humanadental Ins Co	\$571,589	0.01%	\$102,033,952	\$39,356,317	\$62,677,635
66680	National Life Ins Co	\$562,615	0.01%	\$8,656,523,804	\$7,520,346,624	\$1,136,177,180
90212	Great Southern Life Ins Co	\$558,742	0.01%	\$248,157,004	\$212,337,006	\$35,819,998

## *Life and Health (Cont.)*

NAIC	Company Name	AR Premium	Market Share	Assets	Liabilities	Capital & Surplus
84786	Colorado Bankers Life Ins Co	\$541,801	0.01%	\$182,985,021	\$165,133,700	\$17,851,321
69132	State Mut Ins Co	\$533,125	0.01%	\$383,450,176	\$357,675,973	\$25,774,203
64505	Homesteaders Life Co	\$531,597	0.01%	\$1,937,096,043	\$1,830,655,449	\$106,440,594
64238	Guaranty Income Life Ins Co	\$530,764	0.01%	\$492,027,969	\$470,923,992	\$21,103,977
61182	Aurora Natl Life Assur Co	\$523,719	0.01%	\$2,902,446,704	\$2,560,506,429	\$341,940,275
61212	Baltimore Life Ins Co	\$517,536	0.01%	\$917,858,483	\$846,157,460	\$71,701,023
85928	Family Liberty Life Ins Co	\$502,475	0.01%	\$28,583,540	\$21,540,204	\$7,043,336
80799	Celtic Ins Co	\$500,631	0.01%	\$56,954,884	\$36,239,662	\$20,715,222
68047	Professional Ins Co	\$500,153	0.01%	\$105,524,325	\$76,096,213	\$29,428,112
71161	Principal Natl Life Ins Co	\$497,339	0.01%	\$43,141,932	\$21,082,153	\$22,059,779
71471	Ability Ins Co	\$495,468	0.01%	\$214,112,790	\$181,150,340	\$32,962,450
66842	American Gen Life Ins Co of DE	\$462,679	0.01%	\$9,399,343,910	\$8,746,661,230	\$652,682,680
84069	Smith Burial & Life Ins Co	\$461,783	0.01%	\$4,864,573	\$4,142,567	\$722,006
83933	Cooperative Life Ins Co	\$457,839	0.01%	\$6,421,234	\$4,390,131	\$2,031,103
31119	Medico Ins Co	\$446,004	0.01%	\$102,627,357	\$65,721,578	\$36,905,780
69744	Union Labor Life Ins Co	\$434,190	0.01%	\$3,928,789,251	\$3,835,410,678	\$93,378,573
92703	United Natl Life Ins Co of Amer	\$434,058	0.01%	\$8,184,198	\$5,909,304	\$2,274,894
81353	NYLife Ins Co of AZ	\$432,495	0.01%	\$195,310,297	\$137,111,706	\$58,198,591
63657	Garden State Life Ins Co	\$421,448	0.01%	\$101,184,959	\$76,579,188	\$24,605,771
68594	American Amicable Life Ins Co of TX	\$416,427	0.01%	\$394,618,694	\$336,661,236	\$57,957,458
62863	Trustmark Life Ins Co	\$414,631	0.01%	\$360,015,467	\$182,996,689	\$177,018,778
64580	Illinois Mut Life Ins Co	\$405,261	0.01%	\$1,211,616,881	\$1,107,564,857	\$104,052,024
71404	Continental Gen Ins Co	\$395,954	0.01%	\$216,269,233	\$179,748,054	\$36,521,179
62596	Union Fidelity Life Ins Co	\$389,393	0.01%	\$18,522,530,948	\$18,083,614,980	\$438,915,968
62553	Country Life Ins Co	\$381,450	0.01%	\$8,576,560,872	\$7,591,211,615	\$985,349,257
64327	Harleysville Life Ins Co	\$380,007	0.01%	\$375,881,769	\$356,402,383	\$19,479,386
94099	United Investors Life Ins Co	\$376,867	0.01%	\$1,594,526,975	\$1,408,080,957	\$186,446,018
62413	Continental Assur Co	\$370,984	0.01%	\$3,235,385,255	\$2,737,784,592	\$497,600,663
93777	Household Life Ins Co	\$368,127	0.01%	\$769,222,180	\$387,092,921	\$382,129,259
63819	Unity Financial Life Ins Co	\$352,767	0.01%	\$105,975,897	\$95,795,867	\$10,180,030
80659	US Business of Canada Life Assur Co	\$345,377	0.01%	\$4,276,285,451	\$4,138,795,454	\$137,489,997
63487	Investors Life Ins Co N Amer	\$340,182	0.01%	\$741,147,425	\$699,478,590	\$41,668,835
79022	Transamerica Advisors Life Ins Co	\$325,316	0.01%	\$11,139,705,511	\$10,326,563,120	\$813,142,391
69515	Medamerica Ins Co	\$318,089	0.01%	\$552,616,205	\$515,319,257	\$37,296,948
69701	Union Bankers Ins Co	\$303,279	0.01%	\$68,867,886	\$28,438,147	\$40,429,739
67784	Philadelphia Amer Life Ins Co	\$298,713	0.01%	\$190,802,744	\$168,731,651	\$22,071,093
69310	Surety Life Ins Co	\$295,226	0.01%	\$12,526,919	\$617,958	\$11,908,962
69256	Sunamerica Life Ins Co	\$288,907	0.01%	\$17,333,204,313	\$13,435,381,305	\$3,897,823,008
67083	Manhattan Natl Life Ins Co	\$268,512	0.01%	\$207,765,435	\$191,517,783	\$16,247,652
61409	National Benefit Life Ins Co	\$259,567	0.00%	\$479,321,614	\$316,072,378	\$163,249,236
79057	Southland Natl Ins Corp	\$257,740	0.00%	\$183,667,754	\$173,874,298	\$9,793,456
67369	Cigna Health & Life Ins Co	\$255,861	0.00%	\$65,219,530	\$14,222,576	\$50,996,954
61735	Central Security Life Ins Co	\$255,483	0.00%	\$78,642,069	\$70,942,764	\$7,699,305
99775	Funeral Directors Life Ins Co	\$248,428	0.00%	\$714,454,659	\$648,458,557	\$65,996,102
99937	Columbus Life Ins Co	\$242,726	0.00%	\$2,916,264,107	\$2,657,734,292	\$258,529,815
84514	Industrial Alliance Pacific Ins & Fi	\$242,206	0.00%	\$555,765,527	\$540,072,070	\$15,693,457
74799	Leaders Life Ins Co	\$238,568	0.00%	\$5,853,874	\$2,803,556	\$3,050,318
87645	United Fidelity Life Ins Co	\$236,456	0.00%	\$718,877,074	\$351,737,854	\$367,139,220
80020	Mountain Life Ins Co	\$232,547	0.00%	\$7,822,978	\$4,496,520	\$3,326,458
67261	Old Republic Life Ins Co	\$230,887	0.00%	\$149,125,188	\$108,491,081	\$40,634,107
70122	Universal Fidelity Life Ins Co	\$223,916	0.00%	\$10,843,309	\$7,633,992	\$3,209,317
74918	Kilpatrick Life Ins Co	\$220,740	0.00%	\$167,376,762	\$160,206,893	\$7,169,869
60025	Express Scripts Ins Co	\$219,221	0.00%	\$39,076,601	\$25,820,599	\$13,256,002
73660	Directors Life Assur Co	\$217,343	0.00%	\$25,098,757	\$23,172,582	\$1,926,175

## *Life and Health (Cont.)*

NAIC	Company Name	AR Premium	Market Share	Assets	Liabilities	Capital & Surplus
82538	National Health Ins Co	\$215,701	0.00%	\$17,739,906	\$7,470,951	\$10,268,955
97721	Thrivent Life Ins Co	\$214,531	0.00%	\$3,182,806,483	\$3,010,793,089	\$172,013,394
90247	Pharmacists Life Ins Co	\$214,446	0.00%	\$52,043,130	\$45,984,593	\$6,058,537
80675	US Business of Crown Life Ins Co	\$206,010	0.00%	\$298,099,593	\$265,846,820	\$32,252,773
61700	Renaissance Life & Health Ins Co of Am	\$203,620	0.00%	\$40,499,430	\$17,625,636	\$22,873,794
11121	Unified Life Ins Co	\$200,862	0.00%	\$147,643,787	\$133,843,167	\$13,800,620
93459	Pan Amer Assur Co	\$199,955	0.00%	\$20,894,317	\$5,508,983	\$15,385,333
69922	United Home Life Ins Co	\$189,032	0.00%	\$63,596,745	\$46,959,066	\$16,637,679
61875	Church Life Ins Corp	\$188,716	0.00%	\$237,131,939	\$198,198,216	\$38,933,723
80705	US Br Great West Life Assur Co	\$184,616	0.00%	\$99,934,585	\$80,653,213	\$19,281,372
70483	Western & Southern Life Ins Co	\$173,248	0.00%	\$8,484,076,858	\$4,950,470,715	\$3,533,606,143
85766	United Concordia Ins Co	\$173,166	0.00%	\$55,745,541	\$21,399,334	\$34,346,207
69973	United Life Ins Co	\$169,404	0.00%	\$1,554,036,238	\$1,395,657,300	\$158,378,938
68721	Security Life Ins Co of Amer	\$169,268	0.00%	\$91,646,122	\$71,531,657	\$20,114,465
70435	The Savings Bank Life Ins Co of MA	\$164,339	0.00%	\$2,562,923,342	\$2,403,679,418	\$159,243,924
61859	Christian Fidelity Life Ins Co	\$162,375	0.00%	\$83,159,236	\$50,360,350	\$32,798,886
61239	Bankers Fidelity Life Ins Co	\$151,998	0.00%	\$117,937,707	\$86,064,020	\$31,873,687
62057	Lincoln Life & Ann Co of NY	\$151,139	0.00%	\$9,910,887,444	\$9,116,828,499	\$794,058,945
82252	Landmark Life Ins Co	\$146,883	0.00%	\$68,512,895	\$65,227,482	\$3,285,413
68160	Balboa Life Ins Co	\$146,169	0.00%	\$47,655,211	\$10,927,738	\$36,727,473
64904	Investors Heritage Life Ins Co	\$142,225	0.00%	\$350,542,780	\$331,150,020	\$19,392,760
61727	Central Reserve Life Ins Co	\$137,625	0.00%	\$27,685,829	\$8,616,358	\$19,069,471
67148	Occidental Life Ins Co of NC	\$128,985	0.00%	\$265,912,652	\$230,302,808	\$35,609,844
66265	Monarch Life Ins Co	\$127,591	0.00%	\$804,632,370	\$802,847,952	\$1,784,418
84018	Fidelity Standard Life Ins Co	\$118,068	0.00%	\$705,507	\$517,662	\$187,845
62880	AXA Equitable Life & Ann Co	\$110,556	0.00%	\$520,606,883	\$458,744,888	\$61,861,995
67873	Pioneer Amer Ins Co	\$102,723	0.00%	\$52,593,265	\$45,374,282	\$7,218,983
61581	Capitol Life Ins Co	\$100,000	0.00%	\$237,157,022	\$222,252,843	\$14,904,179
60291	American Capitol Ins Co	\$99,992	0.00%	\$72,222,752	\$61,288,304	\$10,934,448
93734	Phoenix Life & Ann Co	\$95,712	0.00%	\$50,016,131	\$26,875,802	\$23,140,329
70173	Universal Underwriters Life Ins Co	\$93,629	0.00%	\$240,393,486	\$173,367,270	\$67,026,216
72222	Amica Life Ins Co	\$89,616	0.00%	\$1,024,041,508	\$838,342,386	\$185,699,122
12747	Envision Ins Co	\$88,614	0.00%	\$97,007,010	\$77,678,538	\$19,328,472
71463	CICA Life Ins Co of Amer	\$87,605	0.00%	\$500,224,670	\$449,551,822	\$50,672,848
77720	LifeSecure Ins Co	\$86,328	0.00%	\$119,182,743	\$105,723,435	\$13,459,308
90557	Zurich Amer Life Ins Co	\$85,028	0.00%	\$13,208,145,900	\$13,023,984,494	\$184,161,406
70130	Universal Guar Life Ins Co	\$83,744	0.00%	\$272,524,420	\$242,081,540	\$30,442,880
84042	Higginbotham Burial Ins Co	\$80,304	0.00%	\$1,472,963	\$1,192,978	\$279,985
69566	Trans World Assur Co	\$78,462	0.00%	\$342,090,968	\$270,063,211	\$72,027,757
88536	Protective Life & Annuity Ins Co	\$70,185	0.00%	\$1,067,998,022	\$985,806,135	\$82,191,887
64890	Berkley Life & Health Ins Co	\$68,779	0.00%	\$31,495,524	\$5,047,200	\$26,448,324
68772	Security Mut Life Ins Co of NY	\$68,457	0.00%	\$2,497,363,798	\$2,381,157,833	\$116,205,965
80985	BCS Life Ins Co	\$67,447	0.00%	\$174,475,410	\$96,718,391	\$77,757,019
78662	Senior Life Ins Co	\$65,010	0.00%	\$35,251,266	\$25,527,995	\$9,723,271
69272	Sunset Life Ins Co of Amer	\$59,525	0.00%	\$392,216,308	\$357,955,340	\$34,260,968
71323	Zale Life Ins Co	\$58,981	0.00%	\$10,709,892	\$2,388,719	\$8,321,173
70416	MML Bay State Life Ins Co	\$58,071	0.00%	\$4,413,236,997	\$4,261,269,914	\$151,967,083
82082	Citizens Natl Life Ins Co	\$57,323	0.00%	\$12,153,871	\$10,015,862	\$2,138,009
94218	Country Investors Life Assur Co	\$56,951	0.00%	\$244,929,901	\$84,775,592	\$160,154,308
60704	Wilton Reassur Life Co of NY	\$55,530	0.00%	\$1,199,634,338	\$1,100,983,465	\$98,650,873
67946	Pioneer Security Life Ins Co	\$53,206	0.00%	\$96,662,966	\$19,413,691	\$77,249,275
60429	American Fidelity Life Ins Co	\$41,804	0.00%	\$460,658,456	\$389,967,906	\$70,690,550
67911	Pioneer Mut Life Ins Co	\$40,164	0.00%	\$477,521,124	\$441,986,338	\$35,534,786
76503	Port O Call Life Ins Co	\$40,162	0.00%	\$1,695,857	\$199,991	\$1,495,866

## Life and Health (Cont.)

NAIC	Company Name	AR Premium	Market Share	Assets	Liabilities	Capital & Surplus
66540	National Farmers Union Life Ins Co	\$39,207	0.00%	\$244,066,651	\$199,598,773	\$44,467,878
67601	Paul Revere Variable Ann Ins Co	\$39,034	0.00%	\$51,632,397	\$16,552,408	\$35,079,989
61395	Beneficial Life Ins Co	\$37,576	0.00%	\$3,325,327,998	\$2,817,595,679	\$507,732,319
80896	Centre Life Ins Co	\$36,412	0.00%	\$1,841,168,665	\$1,752,017,467	\$89,151,198
60518	American Health & Life Ins Co	\$34,448	0.00%	\$1,129,273,545	\$850,862,643	\$278,410,902
65870	Manhattan Life Ins Co	\$34,419	0.00%	\$343,724,953	\$304,176,399	\$39,548,554
61069	Anthem Life Ins Co	\$32,146	0.00%	\$326,137,295	\$254,673,781	\$71,463,514
93742	Securian Life Ins Co	\$30,515	0.00%	\$155,220,496	\$25,556,457	\$129,664,039
83984	New Found Life Ins Co	\$30,022	0.00%	\$2,050,594	\$417,789	\$1,632,805
69140	First Allmerica Fin Life Ins Co	\$28,064	0.00%	\$1,479,570,559	\$1,290,569,799	\$189,000,760
84522	Auto Club Life Ins Co	\$22,019	0.00%	\$425,590,756	\$359,669,755	\$65,921,001
62103	Columbian Mut Life Ins Co	\$21,355	0.00%	\$914,520,478	\$826,115,700	\$88,404,778
66109	Midwestern United Life Ins Co	\$19,808	0.00%	\$241,335,133	\$130,190,161	\$111,144,972
97764	Idealife Ins Co	\$19,225	0.00%	\$19,362,114	\$4,961,636	\$14,400,478
93610	John Hancock Life & Health Ins Co	\$19,011	0.00%	\$7,615,641,218	\$7,153,795,449	\$461,845,769
68209	Provident Life & Cas Ins Co	\$17,684	0.00%	\$747,239,475	\$604,663,852	\$142,575,623
63223	Federal Life Ins Co	\$16,930	0.00%	\$220,021,491	\$197,584,776	\$22,436,715
97241	Settlers Life Ins Co	\$16,528	0.00%	\$373,044,138	\$313,057,202	\$59,986,936
86959	National Family Care Life Ins Co	\$15,095	0.00%	\$15,211,280	\$6,694,981	\$8,516,299
84107	Griffin Leggett Burial Ins Co	\$13,672	0.00%	\$136,874	\$2,174	\$134,700
97691	Life of The South Ins Co	\$13,267	0.00%	\$58,407,152	\$43,101,219	\$15,305,933
91693	IA Amer Life Ins Co	\$12,624	0.00%	\$171,851,034	\$98,268,693	\$73,582,341
67903	Provident Amer Life & Health Ins Co	\$12,297	0.00%	\$18,315,655	\$5,564,604	\$12,751,051
94447	Century Life Ass Co	\$11,296	0.00%	\$9,403,739	\$3,710,291	\$5,693,448
71480	Great Western Ins Co	\$10,830	0.00%	\$494,789,374	\$456,327,762	\$38,461,612
76007	Old United Life Ins Co	\$10,684	0.00%	\$75,897,030	\$34,135,209	\$41,761,821
42129	United Security Assur Co of PA	\$10,126	0.00%	\$115,360,103	\$96,106,487	\$19,253,616
69779	Union Natl Life Ins Co	\$9,586	0.00%	\$16,267,577	\$3,660,691	\$12,606,886
60003	Park Avenue Life Ins Co	\$9,059	0.00%	\$319,723,309	\$254,827,224	\$64,896,084
63495	First Investors Life Ins Co	\$9,016	0.00%	\$1,152,919,698	\$1,124,444,909	\$28,474,789
86126	Members Life Ins Co	\$7,988	0.00%	\$55,567,595	\$31,096,519	\$24,471,076
65951	Merit Life Ins Co	\$7,723	0.00%	\$646,278,361	\$305,052,794	\$341,225,567
79987	World Corp Ins Co	\$6,604	0.00%	\$23,308,315	\$662,329	\$22,645,986
62421	Heritage Union Life Ins Co	\$5,666	0.00%	\$6,448,226	\$199,745	\$6,248,481
81426	Commercial Travelers Mut Ins Co	\$5,608	0.00%	\$32,684,901	\$25,779,889	\$6,905,012
69647	Molina Healthcare Ins Co	\$4,143	0.00%	\$8,952,399	\$318,480	\$8,633,919
68446	Longevity Ins Co	\$4,055	0.00%	\$8,317,847	\$8,440	\$8,309,407
70998	Qualchoice Life & Health Ins Co Inc	\$3,747	0.00%	\$1,687,873	\$7,265	\$1,680,608
62634	Delaware Amer Life Ins Co	\$3,673	0.00%	\$86,090,789	\$56,673,576	\$29,417,213
90638	Best Life & Health Ins Co	\$3,408	0.00%	\$13,327,057	\$4,943,943	\$8,383,114
71455	Financial Amer Life Ins Co	\$3,126	0.00%	\$53,459,191	\$35,897,561	\$17,561,630
70114	Unity Mut Life Ins Co	\$3,081	0.00%	\$286,613,828	\$271,420,901	\$15,192,927
77119	Sentinel Amer Life Ins Co	\$2,277	0.00%	\$33,579,989	\$26,766,479	\$6,813,510
61018	Magna Ins Co	\$2,170	0.00%	\$25,481,559	\$12,788,289	\$12,693,270
70955	USA Life One Ins Co of IN	\$2,152	0.00%	\$36,045,334	\$20,660,039	\$15,385,295
86371	Ullico Life Ins Co	\$1,115	0.00%	\$14,658,829	\$3,965,027	\$10,693,802
79049	Alfa Life Ins Corp	\$1,079	0.00%	\$1,185,502,687	\$995,430,817	\$190,071,870
85189	Investors Consolidated Ins Co	\$1,063	0.00%	\$15,864,296	\$8,615,254	\$7,249,042
90581	Symetra Natl Life Ins Co	\$1,006	0.00%	\$17,136,479	\$6,385,341	\$10,751,138
71420	Sierra Health & Life Ins Co Inc	\$937	0.00%	\$128,382,600	\$47,055,071	\$81,327,529
60250	AmFirst Ins Co	\$901	0.00%	\$15,493,272	\$5,004,682	\$10,488,590
84077	Southern Fidelity Life Ins Co	\$792	0.00%	\$81,485	\$11,097	\$70,388
85286	OneNation Ins Co	\$645	0.00%	\$78,409,346	\$310,358	\$78,098,988
72613	USAA Direct Life Ins Co	\$630	0.00%	\$9,240,141	\$144,844	\$9,095,297

## ***Life and Health (Cont.)***

NAIC	Company Name	AR Premium	Market Share	Assets	Liabilities	Capital & Surplus
81264	Nippon Life Ins Co of Amer	\$600	0.00%	\$167,903,024	\$46,621,493	\$121,281,531
64831	Intramercia Life Ins Co	\$555	0.00%	\$32,856,397	\$23,640,669	\$9,215,728
88366	American Retirement Life Ins Co	\$524	0.00%	\$6,375,253	\$847,638	\$5,527,615
60183	S USA Life Ins Co Inc	\$267	0.00%	\$13,617,365	\$4,811,721	\$8,805,644
82880	CSI Life Ins Co	\$172	0.00%	\$17,533,733	\$4,641,938	\$12,891,795
76201	American Serv Life Ins Co	\$71	0.00%	\$573,359	\$21,229	\$552,129
	<b>TOTAL</b>	<b>\$5,264,334,477</b>	<b>100.00%</b>			

## ***Property and Casualty***

NAIC	Company Name	AR Premium	Market Share	Assets	Liabilities	Capital & Surplus
81264	Nippon Life Ins Co of Amer	\$600	0.00%	\$167,903,024	\$46,621,493	\$121,281,531
25178	State Farm Mut Auto Ins Co	\$335,684,090	8.79%	\$106,988,005,370	\$45,765,913,311	\$61,222,092,059
18325	Southern Farm Bureau Cas Ins Co	\$220,176,879	5.77%	\$1,805,381,326	\$741,719,341	\$1,063,661,985
13757	Farm Bureau Mut Ins Co of AR Inc	\$218,666,823	5.73%	\$276,423,263	\$157,202,919	\$119,220,344
25143	State Farm Fire & Cas Co	\$217,859,009	5.71%	\$27,656,824,371	\$18,883,874,846	\$8,772,949,525
23388	Shelter Mut Ins Co	\$198,371,013	5.20%	\$2,328,917,884	\$981,010,898	\$1,347,906,986
21628	Farmers Ins Co Inc	\$110,002,489	2.88%	\$310,884,535	\$212,944,837	\$97,939,698
19445	National Union Fire Ins Co of Pitts	\$83,849,717	2.20%	\$32,248,074,408	\$19,507,258,897	\$12,740,815,511
17230	Allstate Prop & Cas Ins Co	\$78,874,308	2.07%	\$167,605,601	\$3,162,179	\$164,443,422
19232	Allstate Ins Co	\$72,785,111	1.91%	\$40,786,140,291	\$25,402,325,178	\$15,383,815,113
23787	Nationwide Mut Ins Co	\$63,475,926	1.66%	\$28,204,640,921	\$17,618,496,282	\$10,586,144,639
42919	Progressive Northwestern Ins Co	\$60,104,660	1.57%	\$1,099,361,078	\$780,093,960	\$319,267,118
20443	Continental Cas Co	\$53,454,454	1.40%	\$39,595,457,933	\$29,774,261,520	\$9,821,196,413
27998	Travelers Home & Marine Ins Co	\$48,209,329	1.26%	\$380,497,214	\$304,114,924	\$76,382,289
25941	United Serv Automobile Assn	\$43,492,063	1.14%	\$22,709,411,365	\$6,791,910,708	\$15,917,500,657
10677	Cincinnati Ins Co	\$39,953,595	1.05%	\$9,343,031,687	\$5,565,799,153	\$3,777,232,534
25127	State Auto Prop & Cas Ins Co	\$37,297,923	0.98%	\$2,001,082,862	\$1,428,303,885	\$572,778,977
35882	Geico Gen Ins Co	\$31,304,686	0.82%	\$173,566,617	\$70,411,229	\$103,155,388
40371	Columbia Mut Ins Co	\$29,098,696	0.76%	\$374,513,121	\$187,962,177	\$186,550,944
16535	Zurich Amer Ins Co	\$28,590,813	0.75%	\$29,420,388,445	\$22,046,223,864	\$7,374,164,582
23779	Nationwide Mut Fire Ins Co	\$27,479,645	0.72%	\$4,356,900,677	\$2,130,944,152	\$2,225,956,525
22667	Ace Amer Ins Co	\$26,141,056	0.68%	\$10,033,274,749	\$8,061,772,539	\$1,971,502,210
18988	Auto Owners Ins Co	\$25,187,068	0.66%	\$9,853,959,091	\$3,772,712,410	\$6,081,246,681
33049	State Volunteer Mut Ins Co	\$24,876,115	0.65%	\$1,211,278,256	\$780,662,831	\$430,615,425
25674	Travelers Prop Cas Co of Amer	\$24,282,625	0.64%	\$768,075,957	\$346,302,919	\$421,773,038
23035	Liberty Mut Fire Ins Co	\$23,394,629	0.61%	\$4,825,276,385	\$3,620,920,193	\$1,204,356,192
39012	Safeco Ins Co of IL	\$22,520,658	0.59%	\$692,738,406	\$457,883,461	\$234,854,945
25968	USAA Cas Ins Co	\$21,904,243	0.57%	\$7,241,899,683	\$3,581,128,076	\$3,660,771,607
25135	State Automobile Mut Ins Co	\$21,582,769	0.57%	\$1,929,317,615	\$895,968,197	\$1,033,349,418
22055	Geico Ind Co	\$21,506,814	0.56%	\$5,813,793,083	\$3,541,511,805	\$2,272,281,278
23043	Liberty Mut Ins Co	\$21,020,692	0.55%	\$36,701,548,343	\$22,938,257,314	\$13,763,291,029
19240	Allstate Ind Co	\$20,949,476	0.55%	\$146,290,450	\$3,438,992	\$142,851,459
21482	Factory Mut Ins Co	\$20,619,467	0.54%	\$11,028,837,894	\$4,066,928,859	\$6,961,909,035
19429	Insurance Co of The State of PA	\$20,503,757	0.54%	\$4,641,718,607	\$2,570,792,115	\$2,070,926,492
12188	Alfa Vision Ins Corp	\$20,160,434	0.53%	\$92,571,727	\$42,489,015	\$50,082,712
16322	Progressive Direct Ins Co	\$19,420,677	0.51%	\$3,946,956,230	\$2,743,048,485	\$1,203,907,745
15512	Automobile Club Interins Exch	\$19,394,639	0.51%	\$374,282,926	\$203,057,029	\$171,225,897
20281	Federal Ins Co	\$19,195,149	0.50%	\$31,062,634,346	\$16,745,371,046	\$14,317,263,300
11185	Foremost Ins Co Grand Rapids MI	\$18,580,481	0.49%	\$1,537,338,303	\$638,050,675	\$899,287,628
12548	American Agri Business Ins Co	\$18,492,647	0.48%	\$631,566,353	\$611,500,902	\$20,065,451
25658	Travelers Ind Co	\$18,128,574	0.47%	\$21,109,473,033	\$14,040,025,251	\$7,069,447,782
11770	United Financial Cas Co	\$17,908,919	0.47%	\$1,693,526,013	\$1,287,239,167	\$406,286,846

## ***Property and Casualty (Cont.)***

NAIC	Company Name	AR Premium	Market Share	Assets	Liabilities	Capital & Surplus
18058	Philadelphia Ind Ins Co	\$17,860,812	0.47%	\$5,004,480,183	\$3,198,178,637	\$1,806,301,546
19720	American Alt Ins Corp	\$17,553,542	0.46%	\$404,034,063	\$257,805,793	\$146,228,270
16691	Great Amer Ins Co	\$17,118,120	0.45%	\$4,934,095,986	\$3,457,813,993	\$1,476,281,993
20699	Ace Prop & Cas Ins Co	\$16,767,300	0.44%	\$6,082,919,926	\$4,299,874,119	\$1,783,045,807
40649	Economy Premier Assur Co	\$16,125,720	0.42%	\$91,360,193	\$52,396,704	\$38,963,489
21415	Employers Mut Cas Co	\$16,039,042	0.42%	\$2,174,979,541	\$1,246,012,846	\$928,966,695
15725	Cameron Mut Ins Co	\$15,585,109	0.41%	\$81,446,135	\$51,318,815	\$30,127,320
21873	Firemans Fund Ins Co	\$15,529,019	0.41%	\$9,385,263,745	\$6,655,517,187	\$2,729,746,558
23469	American Modern Home Ins Co	\$15,459,676	0.40%	\$1,067,238,802	\$716,813,135	\$350,425,667
21687	Mid Century Ins Co	\$14,904,979	0.39%	\$3,667,148,205	\$2,830,489,124	\$836,659,080
10642	Cherokee Ins Co	\$14,893,718	0.39%	\$263,954,970	\$144,439,215	\$119,515,755
37478	Hartford Ins Co of The Midwest	\$14,669,438	0.38%	\$422,690,728	\$113,097,916	\$309,592,812
34690	Property & Cas Ins Co of Hartford	\$14,667,199	0.38%	\$218,858,315	\$113,030,059	\$105,828,256
22063	Government Employees Ins Co	\$14,498,849	0.38%	\$16,462,921,016	\$9,998,454,830	\$6,464,466,186
20095	Bituminous Cas Corp	\$14,128,460	0.37%	\$717,199,724	\$460,572,851	\$256,626,873
41840	Allmerica Fin Benefit Ins Co	\$13,946,828	0.37%	\$26,324,054	\$42,732	\$26,281,322
24740	Safeco Ins Co of Amer	\$13,471,590	0.35%	\$3,837,984,130	\$2,993,078,301	\$844,905,829
28401	American Natl Prop & Cas Co	\$13,405,253	0.35%	\$1,068,882,523	\$686,504,364	\$382,378,159
31194	Travelers Cas & Surety Co of Amer	\$13,035,384	0.34%	\$4,238,258,523	\$2,436,034,011	\$1,802,224,512
34312	Producers Agriculture Ins Co	\$12,842,500	0.34%	\$338,793,005	\$291,344,976	\$47,448,029
23736	Direct Natl Ins Co	\$12,726,753	0.33%	\$22,105,856	\$15,092,069	\$7,013,787
13935	Federated Mut Ins Co	\$12,643,917	0.33%	\$4,019,352,730	\$1,828,414,476	\$2,190,938,254
28452	Republic Mortgage Ins Co	\$12,598,634	0.33%	\$1,762,567,043	\$1,537,938,032	\$224,629,011
25844	Union Ins Co	\$12,341,202	0.32%	\$95,251,421	\$67,859,368	\$27,392,053
27626	Firstcomp Ins Co	\$12,192,400	0.32%	\$299,239,681	\$231,561,336	\$67,678,345
23841	New Hampshire Ins Co	\$12,122,946	0.32%	\$3,534,440,637	\$2,519,103,583	\$1,015,337,054
23450	American Family Home Ins Co	\$10,550,507	0.28%	\$502,086,867	\$333,895,478	\$168,191,390
13528	Brotherhood Mut Ins Co	\$10,388,003	0.27%	\$337,779,296	\$188,143,698	\$149,635,598
21407	Emcasco Ins Co	\$10,092,061	0.26%	\$361,805,234	\$262,200,857	\$99,604,377
11371	Great West Cas Co	\$10,053,349	0.26%	\$1,571,927,943	\$1,073,096,533	\$498,831,410
21652	Farmers Ins Exch	\$9,676,524	0.25%	\$15,066,753,344	\$11,387,960,359	\$3,678,792,984
22292	Hanover Ins Co	\$9,644,413	0.25%	\$5,253,510,000	\$3,510,712,181	\$1,742,797,819
26298	Metropolitan Prop & Cas Ins Co	\$9,455,337	0.25%	\$4,900,892,670	\$3,055,570,489	\$1,845,322,181
19070	Standard Fire Ins Co	\$9,441,639	0.25%	\$3,522,928,723	\$2,330,114,002	\$1,192,814,721
10335	Bridgefield Cas Ins Co	\$9,428,484	0.25%	\$73,412,848	\$28,881,373	\$44,531,475
37257	Praetorian Ins Co	\$9,312,543	0.24%	\$1,144,635,259	\$723,741,485	\$420,893,774
27120	Trumbull Ins Co	\$9,243,087	0.24%	\$201,377,534	\$113,021,522	\$88,356,012
18767	Church Mut Ins Co	\$9,210,659	0.24%	\$1,224,061,198	\$810,359,039	\$413,702,158
42978	American Security Ins Co	\$9,209,992	0.24%	\$1,738,063,572	\$1,064,056,331	\$674,007,241
11150	Arch Ins Co	\$9,141,838	0.24%	\$1,928,002,645	\$1,312,219,778	\$615,782,867
33383	First Professionals Ins Co	\$8,700,361	0.23%	\$577,521,334	\$346,935,773	\$230,585,561
36064	Hanover Amer Ins Co	\$8,637,665	0.23%	\$26,277,237	\$25,756	\$26,251,481
10251	American Underwriters Ins Co	\$8,463,768	0.22%	\$8,177,756	\$2,681,860	\$5,495,896
19410	Commerce & Industry Ins Co	\$8,413,666	0.22%	\$8,311,479,736	\$6,424,524,414	\$1,886,955,322
24147	Old Republic Ins Co	\$8,241,868	0.22%	\$2,469,368,240	\$1,600,046,736	\$869,321,504
44369	Imperial Fire & Cas Ins Co	\$7,899,026	0.21%	\$89,545,214	\$57,616,336	\$31,928,878
25615	Charter Oak Fire Ins Co	\$7,856,982	0.21%	\$926,536,476	\$691,268,752	\$235,267,725
11000	Sentinel Ins Co Ltd	\$7,823,635	0.20%	\$199,002,752	\$67,860,415	\$131,142,336
24015	Northland Ins Co	\$7,699,490	0.20%	\$1,183,720,070	\$611,077,567	\$572,642,503
10111	American Bankers Ins Co of FL	\$7,680,566	0.20%	\$1,251,344,626	\$849,711,006	\$401,633,620
10804	Continental Western Ins Co	\$7,590,422	0.20%	\$215,252,588	\$135,095,921	\$80,156,667
33600	LM Ins Corp	\$7,551,753	0.20%	\$254,910,628	\$110,362,069	\$144,548,559
23361	Shelter Gen Ins Co	\$7,407,640	0.19%	\$183,825,987	\$90,041,267	\$93,784,720
13021	United Fire & Cas Co	\$7,287,201	0.19%	\$1,260,655,151	\$666,347,320	\$594,307,831

## ***Property and Casualty (Cont.)***

NAIC	Company Name	AR Premium	Market Share	Assets	Liabilities	Capital & Surplus
24767	St Paul Fire & Marine Ins Co	\$7,175,444	0.19%	\$18,356,919,227	\$12,536,050,944	\$5,820,868,283
21709	Truck Ins Exch	\$7,072,029	0.19%	\$1,934,849,383	\$1,382,426,343	\$552,423,040
31895	American Interstate Ins Co	\$6,999,336	0.18%	\$915,425,720	\$595,037,659	\$320,388,061
18600	USAA Gen Ind Co	\$6,951,687	0.18%	\$803,117,118	\$523,832,068	\$279,285,050
24538	Republic Underwriters Ins Co	\$6,875,969	0.18%	\$676,109,864	\$422,068,344	\$254,041,520
17647	United Home Ins Co	\$6,806,633	0.18%	\$11,243,800	\$5,714,220	\$5,529,580
35300	Allianz Global Risks US Ins Co	\$6,772,290	0.18%	\$5,483,790,879	\$1,846,766,242	\$3,637,024,637
29424	Hartford Cas Ins Co	\$6,734,505	0.18%	\$2,215,649,544	\$1,244,003,437	\$971,646,107
37273	Axis Ins Co	\$6,666,125	0.17%	\$868,717,874	\$397,511,414	\$471,206,460
19682	Hartford Fire In Co	\$6,402,659	0.17%	\$25,075,746,594	\$11,116,889,543	\$13,958,857,051
10783	Cornerstone Natl Ins Co	\$6,359,305	0.17%	\$56,622,421	\$42,287,405	\$14,335,016
25704	Pride National Ins Co	\$6,289,188	0.16%	\$17,412,502	\$12,394,330	\$5,018,172
27235	Auto Club Family Ins Co	\$6,207,413	0.16%	\$85,294,599	\$53,283,100	\$32,011,499
29858	Mortgage Guar Ins Corp	\$6,158,775	0.16%	\$6,508,900,558	\$4,799,851,634	\$1,709,048,924
28746	Equity Ins Co	\$6,066,019	0.16%	\$67,498,966	\$38,858,448	\$28,640,518
24791	St Paul Mercury Ins Co	\$6,041,937	0.16%	\$401,668,931	\$261,496,939	\$140,171,991
11839	Circle Star Ins Co RRG	\$6,014,886	0.16%	\$1,707,496	\$430,418	\$1,277,078
19216	Southern Ins Co	\$5,998,040	0.16%	\$49,269,819	\$17,298,683	\$31,971,136
25666	Travelers Ind Co of Amer	\$5,946,037	0.16%	\$615,586,443	\$444,045,709	\$171,540,733
26042	Wausau Underwriters Ins Co	\$5,929,343	0.16%	\$270,685,842	\$170,866,948	\$99,818,894
20478	National Fire Ins Co of Hartford	\$5,883,705	0.15%	\$137,688,510	\$25,456,314	\$112,232,197
19640	Columbia Natl Ins Co	\$5,820,731	0.15%	\$88,440,463	\$50,356,721	\$38,083,742
31325	Acadia Ins Co	\$5,777,203	0.15%	\$122,265,003	\$71,383,303	\$50,881,699
20508	Valley Forge Ins Co	\$5,767,757	0.15%	\$68,001,213	\$39,777	\$67,961,436
13137	Viking Ins Co of WI	\$5,725,511	0.15%	\$362,329,051	\$195,001,010	\$167,328,040
42404	Liberty Ins Corp	\$5,711,070	0.15%	\$1,421,193,156	\$1,145,022,495	\$276,170,661
25623	Phoenix Ins Co	\$5,641,717	0.15%	\$3,605,229,676	\$2,404,142,060	\$1,201,087,616
14168	Harleysville Mut Ins Co	\$5,385,913	0.14%	\$1,505,482,498	\$601,089,122	\$904,393,376
13571	Select Providers Ins Recip Exch RRG	\$5,227,991	0.14%	\$10,269,690	\$9,449,236	\$820,454
15873	United Guar Residential Ins Co	\$5,184,453	0.14%	\$2,661,941,516	\$1,428,616,128	\$1,233,325,388
29459	Twin City Fire Ins Co	\$5,168,813	0.14%	\$640,265,482	\$339,079,261	\$301,186,221
19356	Maryland Cas Co	\$5,130,513	0.13%	\$155,065,485	\$25,783,457	\$129,282,028
10855	Cypress Ins Co	\$5,044,760	0.13%	\$786,967,832	\$561,830,235	\$225,137,597
13897	Farmers Mut Hail Ins Co of IA	\$5,027,471	0.13%	\$488,213,496	\$152,933,072	\$335,280,425
28223	Nationwide Agribusiness Ins Co	\$4,923,565	0.13%	\$179,698,587	\$117,163,022	\$62,535,565
19658	Bristol W Ins Co	\$4,802,356	0.13%	\$209,186,034	\$165,945,578	\$43,240,456
21180	Sentry Select Ins Co	\$4,790,854	0.13%	\$620,963,679	\$394,563,628	\$226,400,050
22306	Massachusetts Bay Ins Co	\$4,787,486	0.13%	\$53,612,317	\$353,485	\$53,258,832
25682	Travelers Ind Co of CT	\$4,787,008	0.13%	\$1,016,993,316	\$674,722,104	\$342,271,213
33391	ProAssurance Ind Co Inc	\$4,765,701	0.12%	\$1,703,770,398	\$1,131,064,083	\$572,706,315
38458	Genworth Mortgage Ins Corp	\$4,701,581	0.12%	\$2,655,367,619	\$1,916,067,437	\$739,300,182
41181	Universal Underwriters Ins Co	\$4,660,719	0.12%	\$385,755,195	\$42,035,777	\$343,719,417
10166	Accident Fund Ins Co of Amer	\$4,624,630	0.12%	\$2,198,999,096	\$1,550,779,835	\$648,219,261
26247	American Guar & Liab Ins	\$4,594,146	0.12%	\$236,754,135	\$68,987,620	\$167,766,514
39217	QBE Ins Corp	\$4,536,986	0.12%	\$1,057,089,319	\$702,397,985	\$354,691,334
24813	Balboa Ins Co	\$4,481,504	0.12%	\$2,743,472,642	\$1,351,513,892	\$1,391,958,750
10014	Affiliated Fm Ins Co	\$4,440,049	0.12%	\$1,915,425,380	\$982,063,530	\$933,361,850
32700	Owners Ins Co	\$4,432,685	0.12%	\$2,838,374,083	\$1,847,551,698	\$990,822,386
13188	Western Surety Co	\$4,414,616	0.12%	\$1,481,291,531	\$655,652,853	\$825,638,678
19305	Assurance Co of Amer	\$4,409,364	0.12%	\$39,766,463	\$20,294,026	\$19,472,438
14982	Penn Millers Ins Co	\$4,401,104	0.12%	\$202,926,778	\$134,735,948	\$68,190,830
29599	US Specialty Ins Co	\$4,333,088	0.11%	\$1,746,662,307	\$1,215,938,482	\$530,723,825
11118	Federated Rural Electric Ins Exch	\$4,328,565	0.11%	\$383,327,811	\$266,884,558	\$116,443,253
36625	Old Reliable Cas Co	\$4,312,230	0.11%	\$11,121,104	\$2,703,330	\$8,417,775

## ***Property and Casualty (Cont.)***

NAIC	Company Name	AR Premium	Market Share	Assets	Liabilities	Capital & Surplus
10464	Canal Ins Co	\$4,240,149	0.11%	\$912,118,547	\$502,907,529	\$409,211,018
11991	National Cas Co	\$4,208,298	0.11%	\$162,230,302	\$47,044,074	\$115,186,228
10723	Nationwide Assur Co	\$4,203,281	0.11%	\$61,265,910	\$3,072,266	\$58,193,644
32220	21st Century N Amer Ins Co	\$4,182,066	0.11%	\$699,204,790	\$239,743,048	\$459,461,742
40142	American Zurich Ins Co	\$4,172,766	0.11%	\$227,310,189	\$79,547,480	\$147,762,709
19046	Travelers Cas Ins Co of Amer	\$4,144,544	0.11%	\$1,822,597,924	\$1,308,184,571	\$514,413,354
12114	National Security Fire & Cas Co	\$4,086,904	0.11%	\$68,814,170	\$38,293,153	\$30,521,017
21253	Garrison Prop & Cas Ins Co	\$4,086,840	0.11%	\$568,426,764	\$409,931,103	\$158,495,661
20397	Vigilant Ins Co	\$4,046,625	0.11%	\$422,391,673	\$209,745,505	\$212,646,168
33790	Radian Guar Inc	\$4,040,173	0.11%	\$4,313,650,425	\$3,017,945,503	\$1,295,704,922
13714	Pharmacists Mut Ins Co	\$3,865,787	0.10%	\$206,798,165	\$135,715,164	\$71,083,001
37885	XL Specialty Ins Co	\$3,863,151	0.10%	\$498,918,153	\$320,168,786	\$178,749,367
16047	Southern Pioneer Prop & Cas Ins Co	\$3,845,495	0.10%	\$22,853,431	\$9,349,757	\$13,503,674
22322	Greenwich Ins Co	\$3,830,588	0.10%	\$919,712,089	\$467,156,106	\$452,555,983
15130	Encompass Ind Co	\$3,745,782	0.10%	\$24,315,921	\$558,340	\$23,757,581
18333	Peerless Ind Ins Co	\$3,742,392	0.10%	\$784,126,663	\$549,068,004	\$235,058,659
10204	Consumers Ins USA Inc	\$3,733,077	0.10%	\$60,934,882	\$35,623,306	\$25,311,576
25240	NAU Country Ins Co	\$3,728,391	0.10%	\$492,741,805	\$199,435,192	\$293,306,613
22314	RSUI Ind Co	\$3,695,007	0.10%	\$2,675,266,665	\$1,433,114,142	\$1,242,152,523
24171	Netherlands Ins Co The	\$3,661,442	0.10%	\$486,256,816	\$333,802,892	\$152,453,924
24260	Progressive Cas Ins Co	\$3,606,078	0.09%	\$4,800,526,915	\$3,467,065,235	\$1,333,461,680
42376	Technology Ins Co Inc	\$3,551,556	0.09%	\$539,033,670	\$352,563,997	\$186,469,673
38318	Starr Ind & Liab Co	\$3,547,407	0.09%	\$913,057,700	\$389,453,374	\$523,604,326
34339	Metropolitan Grp Prop & Cas Ins Co	\$3,532,328	0.09%	\$394,430,456	\$86,388,674	\$308,041,782
10784	Maxum Cas Ins Co	\$3,488,636	0.09%	\$17,043,126	\$3,328,084	\$13,715,042
26182	Harleysville Worcester Ins Co	\$3,480,577	0.09%	\$562,669,275	\$424,233,240	\$138,436,035
18236	Agents Mut Ins Co	\$3,469,518	0.09%	\$1,547,469	\$583,816	\$963,653
20427	American Cas Co of Reading PA	\$3,458,747	0.09%	\$125,092,360	\$36,995	\$125,055,365
43575	Indemnity Ins Co of North Amer	\$3,450,490	0.09%	\$394,593,927	\$251,429,827	\$143,164,100
23612	Midwest Employers Cas Co	\$3,435,397	0.09%	\$326,009,281	\$185,895,859	\$140,113,421
27251	PMI Mortgage Ins Co	\$3,385,406	0.09%	\$3,132,212,478	\$2,392,735,378	\$739,477,100
39845	Westport Ins Corp	\$3,378,983	0.09%	\$5,784,689,464	\$4,108,569,431	\$1,676,120,033
13056	RLI Ins Co	\$3,336,978	0.09%	\$1,393,761,574	\$661,382,598	\$732,378,976
35289	Continental Ins Co	\$3,308,659	0.09%	\$2,658,211,607	\$1,511,695,067	\$1,146,516,540
12831	State Natl Ins Co Inc	\$3,269,196	0.09%	\$198,475,217	\$67,117,426	\$131,357,791
40045	Starnet Ins Co	\$3,248,155	0.09%	\$170,790,571	\$61,809,950	\$108,980,621
37869	Pre Paid Legal Cas Inc	\$3,141,081	0.08%	\$22,605,997	\$3,513,924	\$19,092,073
39306	Fidelity & Deposit Co of MD	\$3,127,240	0.08%	\$236,535,096	\$43,266,777	\$193,268,319
37877	Nationwide Prop & Cas Ins Co	\$3,118,153	0.08%	\$170,447,235	\$118,917,964	\$51,529,271
15032	Guideone Mut Ins Co	\$3,006,395	0.08%	\$1,047,237,809	\$635,959,247	\$411,278,562
19062	Automobile Ins Co of Hartford CT	\$2,975,343	0.08%	\$978,820,852	\$671,333,176	\$307,487,676
23396	Amerisure Mut Ins Co	\$2,885,587	0.08%	\$1,756,100,663	\$1,082,749,886	\$673,350,777
15105	Safety Natl Cas Corp	\$2,794,026	0.07%	\$2,471,421,333	\$1,742,504,174	\$728,917,159
11126	Sompo Japan Ins Co of Amer	\$2,780,579	0.07%	\$839,619,920	\$402,980,636	\$436,639,284
22608	National Specialty Ins Co	\$2,742,231	0.07%	\$33,115,004	\$14,996,635	\$18,118,369
34037	Hallmark Ins Co	\$2,721,755	0.07%	\$221,560,920	\$148,735,524	\$72,825,396
21458	Employers Ins of Wausau	\$2,675,577	0.07%	\$3,682,403,162	\$2,371,862,040	\$1,310,541,122
30104	Hartford Underwriters Ins Co	\$2,665,270	0.07%	\$1,546,527,084	\$904,523,088	\$642,003,995
20087	National Ind Co	\$2,663,668	0.07%	\$111,644,977,716	\$43,207,923,401	\$68,437,054,315
26069	Wausau Business Ins Co	\$2,587,909	0.07%	\$199,828,528	\$142,730,559	\$57,097,969
18295	Lafayette Ins Co	\$2,586,381	0.07%	\$134,367,054	\$65,969,165	\$68,397,889
35319	United Automobile Ins Co	\$2,564,167	0.07%	\$411,110,745	\$320,119,849	\$90,990,896
10510	Carolina Cas Ins Co	\$2,542,072	0.07%	\$249,097,832	\$55,289,057	\$193,808,775
19801	Argonaut Ins Co	\$2,534,589	0.07%	\$1,383,260,093	\$1,004,373,999	\$378,886,095

## ***Property and Casualty (Cont.)***

<b>NAIC</b>	<b>Company Name</b>	<b>AR Premium</b>	<b>Market Share</b>	<b>Assets</b>	<b>Liabilities</b>	<b>Capital &amp; Surplus</b>
18023	Star Ins Co	\$2,525,828	0.07%	\$795,227,573	\$568,875,916	\$226,351,657
19615	American Reliable Ins Co	\$2,516,460	0.07%	\$303,152,194	\$202,564,178	\$100,588,016
18252	Town & Country Mut Ins Co	\$2,498,950	0.07%	\$2,136,871	\$1,317,426	\$819,445
11398	Guarantee Ins Co	\$2,492,755	0.07%	\$164,083,428	\$138,883,638	\$25,199,790
23728	National Gen Ins Co	\$2,443,693	0.06%	\$137,314,213	\$86,249,490	\$51,064,723
20052	National Liab & Fire Ins Co	\$2,432,069	0.06%	\$1,206,088,259	\$574,952,325	\$631,135,934
25011	Wesco Ins Co	\$2,424,005	0.06%	\$234,686,559	\$173,743,966	\$60,942,593
12810	MDOW Ins Co	\$2,418,620	0.06%	\$6,633,265	\$2,880,930	\$3,752,335
21423	Union Ins Co of Providence	\$2,412,090	0.06%	\$97,325,988	\$49,682,406	\$47,643,582
21113	United States Fire Ins Co	\$2,365,721	0.06%	\$2,511,795,130	\$1,610,606,897	\$901,188,233
42803	Guideone Elite Ins Co	\$2,350,292	0.06%	\$26,737,470	\$7,375,700	\$19,361,770
24414	General Cas Co of WI	\$2,310,117	0.06%	\$965,071,847	\$441,729,625	\$523,342,222
12223	Santa Fe Auto Ins Co	\$2,238,934	0.06%	\$62,917,830	\$42,269,926	\$20,647,904
33650	Mendota Ins Co	\$2,214,033	0.06%	\$121,951,223	\$95,306,899	\$26,644,325
11255	Caterpillar Ins Co	\$2,137,010	0.06%	\$401,807,674	\$260,853,286	\$140,954,388
26344	Great Amer Assur Co	\$2,129,864	0.06%	\$17,685,220	\$16,402	\$17,668,818
21326	Empire Fire & Marine Ins Co	\$2,111,357	0.06%	\$87,575,798	\$34,410,943	\$53,164,854
38245	BCS Ins Co	\$2,086,933	0.05%	\$217,904,472	\$75,859,169	\$142,045,303
12696	America First Ins Co	\$2,082,043	0.05%	\$13,344,582	\$803,793	\$12,540,789
35696	Harleysville Preferred Ins Co	\$2,074,651	0.05%	\$743,481,896	\$567,479,090	\$176,002,806
14974	Pennsylvania Lumbermens Mut Ins	\$2,051,391	0.05%	\$335,864,039	\$223,092,408	\$112,771,631
12262	Pennsylvania Manufacturers Assoc Ins	\$2,041,162	0.05%	\$715,254,885	\$476,464,774	\$238,790,111
13838	Farmland Mut Ins Co	\$2,031,930	0.05%	\$385,921,232	\$223,190,275	\$162,730,957
22136	Great Amer Ins Co of NY	\$2,003,282	0.05%	\$62,467,893	\$6,050	\$62,461,843
32557	American Physicians Ins Co	\$1,935,915	0.05%	\$238,870,521	\$114,999,369	\$123,871,152
19038	Travelers Cas & Surety Co	\$1,917,312	0.05%	\$15,034,563,922	\$9,594,801,776	\$5,439,762,147
34789	21st Century Centennial Ins Co	\$1,912,031	0.05%	\$556,682,298	\$129,151,944	\$427,530,354
24198	Peerless Ins Co	\$1,908,652	0.05%	\$7,420,492,899	\$5,642,817,569	\$1,777,675,330
23809	Granite State Ins Co	\$1,897,469	0.05%	\$38,993,091	\$1,598,583	\$37,394,508
28535	Triangle Ins Co Inc	\$1,855,847	0.05%	\$42,134,297	\$27,099,898	\$15,034,399
24988	Sentry Ins A Mut Co	\$1,850,043	0.05%	\$5,749,788,124	\$2,384,386,271	\$3,365,401,852
42994	Progressive Classic Ins Co	\$1,844,819	0.05%	\$284,387,508	\$205,011,995	\$79,375,513
38652	American Modern Select Ins Co	\$1,797,928	0.05%	\$157,951,333	\$129,488,564	\$28,462,769
23663	National Amer Ins Co	\$1,794,161	0.05%	\$148,071,937	\$92,605,595	\$55,466,342
19402	Chartis Prop Cas Co	\$1,792,528	0.05%	\$4,407,693,450	\$2,714,083,471	\$1,693,609,979
22837	AGCS Marine Ins Co	\$1,789,447	0.05%	\$749,568,487	\$628,791,888	\$120,776,599
10922	Insuremax Ins Co	\$1,786,841	0.05%	\$18,981,749	\$12,016,214	\$6,965,535
28932	Markel Amer Ins Co	\$1,784,225	0.05%	\$497,163,964	\$368,450,186	\$128,713,778
21121	Westchester Fire Ins Co	\$1,783,470	0.05%	\$2,185,991,456	\$1,309,554,218	\$876,437,238
23280	The Cincinnati Ind Co	\$1,750,890	0.05%	\$76,859,227	\$6,749,975	\$70,109,253
24074	Ohio Cas Ins Co	\$1,749,046	0.05%	\$4,842,037,189	\$3,724,882,476	\$1,117,154,713
20494	Transportation Ins Co	\$1,742,649	0.05%	\$82,688,499	\$384,294	\$82,304,205
28304	Federated Serv Ins Co	\$1,742,398	0.05%	\$366,775,411	\$205,586,216	\$161,189,194
19704	American States Ins Co	\$1,740,973	0.05%	\$1,734,629,076	\$1,404,604,957	\$330,024,119
44393	West Amer Ins Co	\$1,735,139	0.05%	\$347,377,994	\$112,432,488	\$234,945,506
20044	Cornhusker Cas Co	\$1,728,855	0.05%	\$804,952,006	\$140,077,894	\$664,874,112
23418	Mid Continent Cas Co	\$1,727,266	0.05%	\$619,326,802	\$401,901,193	\$217,425,609
20303	Great Northern Ins Co	\$1,714,287	0.04%	\$1,574,764,630	\$1,115,512,235	\$459,252,395
41998	American Southern Home Ins Co	\$1,693,445	0.04%	\$120,234,452	\$88,075,220	\$32,159,233
36137	Travelers Commercial Ins Co	\$1,692,183	0.04%	\$338,559,024	\$246,994,891	\$91,564,133
37220	Direct Ins Co	\$1,684,351	0.04%	\$69,210,104	\$50,421,529	\$18,788,575
11800	Foremost Prop & Cas Ins Co	\$1,668,770	0.04%	\$43,149,364	\$26,675,113	\$16,474,251
29068	IDS Prop Cas Ins Co	\$1,666,927	0.04%	\$982,620,143	\$571,277,557	\$411,342,586
10895	Midwest Ins Co	\$1,589,134	0.04%	\$71,237,578	\$54,104,366	\$17,133,212

## ***Property and Casualty (Cont.)***

NAIC	Company Name	AR Premium	Market Share	Assets	Liabilities	Capital & Surplus
42757	Agri Gen Ins Co	\$1,578,987	0.04%	\$938,183,662	\$163,482,829	\$774,700,833
44725	1st Auto & Cas Ins Co	\$1,563,942	0.04%	\$30,219,923	\$16,891,911	\$13,328,012
19887	Trinity Universal Ins Co	\$1,553,971	0.04%	\$2,642,784,732	\$1,743,152,014	\$899,632,719
23108	Lumbermens Underwriting Alliance	\$1,546,988	0.04%	\$339,438,606	\$251,391,905	\$88,046,701
13927	Homesite Ins Co of The Midwest	\$1,523,741	0.04%	\$199,191,002	\$147,744,915	\$51,446,087
21164	Dairyland Ins Co	\$1,521,450	0.04%	\$1,125,562,567	\$659,148,959	\$466,413,608
20109	Bituminous Fire & Marine Ins Co	\$1,509,558	0.04%	\$464,186,438	\$323,282,424	\$140,904,014
26310	Granite Re Inc	\$1,493,836	0.04%	\$30,414,106	\$15,818,924	\$14,595,182
10071	Encompass Ins Co of Amer	\$1,482,327	0.04%	\$20,608,462	\$233,305	\$20,375,158
22357	Hartford Accident & Ind Co	\$1,464,874	0.04%	\$10,744,489,681	\$7,561,533,222	\$3,182,956,459
29980	First Colonial Ins Co	\$1,458,083	0.04%	\$312,039,450	\$171,934,074	\$140,105,377
10349	Acceptance Cas Ins Co	\$1,433,446	0.04%	\$50,415,374	\$18,365,331	\$32,050,043
18538	Bancinsure Inc	\$1,428,427	0.04%	\$116,234,430	\$79,130,497	\$37,103,933
26077	Lancer Ins Co	\$1,396,905	0.04%	\$501,375,059	\$345,050,389	\$156,324,670
19380	American Home Assur Co	\$1,391,845	0.04%	\$26,416,595,410	\$19,743,496,608	\$6,673,098,802
19917	Liberty Ins Underwriters Inc	\$1,379,193	0.04%	\$180,715,683	\$81,546,319	\$99,169,364
15954	AmTrust Ins Co of KS Inc	\$1,361,148	0.04%	\$28,613,773	\$15,896,122	\$12,717,652
40460	Sagamore Ins Co	\$1,357,407	0.04%	\$158,376,605	\$42,336,211	\$116,040,394
40843	Universal Underwriters of TX Ins	\$1,357,166	0.04%	\$13,071,135	\$3,949,688	\$9,121,448
19860	Argonaut Great Central Ins Co	\$1,346,053	0.04%	\$70,458,211	\$10,844,781	\$59,613,431
16705	Dealers Assur Co	\$1,337,366	0.04%	\$64,044,670	\$24,458,579	\$39,586,091
24350	Triad Guar Ins Corp	\$1,318,681	0.03%	\$911,466,484	\$685,536,758	\$225,929,726
14354	Jewelers Mut Ins Co	\$1,313,032	0.03%	\$237,335,990	\$91,131,694	\$146,204,297
19488	Amerisure Ins Co	\$1,309,194	0.03%	\$640,831,294	\$440,861,147	\$199,970,147
42749	Traders Ins Co	\$1,307,053	0.03%	\$15,209,751	\$10,718,429	\$4,491,321
32387	Star Cas Ins Co	\$1,301,626	0.03%	\$18,946,144	\$10,317,753	\$8,628,391
19518	Catlin Ins Co	\$1,268,984	0.03%	\$175,366,421	\$116,903,590	\$58,462,831
28665	Cincinnati Cas Co	\$1,253,681	0.03%	\$293,228,034	\$24,685,052	\$268,542,982
10847	Cumis Ins Society Inc	\$1,242,373	0.03%	\$1,529,389,381	\$1,059,023,055	\$470,366,326
24449	Regent Ins Co	\$1,219,991	0.03%	\$179,179,905	\$133,600,348	\$45,579,557
41483	Farmington Cas Co	\$1,218,921	0.03%	\$982,098,550	\$698,688,664	\$283,409,885
43656	Louisiana Med Mut Ins Co	\$1,216,100	0.03%	\$372,105,737	\$229,999,508	\$142,106,229
34274	Central States Ind Co of Omaha	\$1,207,936	0.03%	\$272,918,755	\$37,706,451	\$235,212,304
14559	Guideone Specialty Mut Ins Co	\$1,206,506	0.03%	\$232,013,588	\$148,844,178	\$83,169,410
17965	American Sentinel Ins Co	\$1,196,823	0.03%	\$23,876,746	\$11,208,898	\$12,667,848
22012	Motors Ins Corp	\$1,181,594	0.03%	\$3,406,839,253	\$1,999,984,269	\$1,406,854,984
24112	Westfield Ins Co	\$1,139,500	0.03%	\$2,231,574,723	\$1,485,235,662	\$746,339,061
11630	Jefferson Ins Co	\$1,138,843	0.03%	\$27,951,045	\$9,108,301	\$18,842,744
42307	Navigators Ins Co	\$1,135,194	0.03%	\$1,823,743,709	\$1,136,824,347	\$686,919,362
32620	National Interstate Ins Co	\$1,121,595	0.03%	\$799,563,212	\$525,916,352	\$273,646,860
11843	Medical Protective Co	\$1,113,844	0.03%	\$2,271,164,453	\$1,515,456,998	\$755,707,455
20516	Euler Hermes Amer Credit Ind Co	\$1,110,304	0.03%	\$379,889,251	\$222,287,671	\$157,601,580
16578	Fidelity Natl Prop & Cas Ins Co	\$1,107,085	0.03%	\$109,917,225	\$8,835,211	\$101,082,014
24554	XL Ins Amer Inc	\$1,104,269	0.03%	\$674,094,240	\$428,797,875	\$245,296,365
18287	Assured Guar Municipal Corp	\$1,100,405	0.03%	\$4,237,316,485	\$3,310,277,327	\$927,039,158
19530	State Auto Natl Ins Co	\$1,068,476	0.03%	\$10,427,760	\$427,760	\$10,000,000
14265	Indiana Lumbermens Mut Ins Co	\$1,064,152	0.03%	\$98,183,293	\$65,680,317	\$32,502,976
30180	Assured Guar Corp	\$1,060,746	0.03%	\$2,999,582,652	\$2,145,462,694	\$854,119,958
10340	Stonington Ins Co	\$1,058,542	0.03%	\$574,591,241	\$441,362,574	\$133,228,667
41459	Armed Forces Ins Exch	\$1,048,290	0.03%	\$145,410,876	\$80,126,815	\$65,284,061
12157	Companion Prop & Cas Ins Co	\$1,043,980	0.03%	\$564,713,047	\$348,181,737	\$216,531,310
19828	Argonaut Midwest Ins Co	\$1,026,274	0.03%	\$43,098,072	\$18,516,142	\$24,581,930
10690	Allied World Natl Assur Co	\$1,024,201	0.03%	\$252,973,571	\$137,295,039	\$115,678,532
19224	St Paul Protective Ins Co	\$1,021,786	0.03%	\$506,229,491	\$271,830,116	\$234,399,376

## ***Property and Casualty (Cont.)***

NAIC	Company Name	AR Premium	Market Share	Assets	Liabilities	Capital & Surplus
19976	Amica Mut Ins Co	\$1,020,283	0.03%	\$4,089,088,711	\$1,748,759,459	\$2,340,329,252
19879	Security Natl Ins Co	\$1,015,299	0.03%	\$48,266,449	\$31,345,804	\$16,920,645
21857	American Ins Co	\$1,009,557	0.03%	\$1,254,926,443	\$944,852,739	\$310,073,704
12904	Tokio Marine & Nichido Fire Ins Co	\$1,002,230	0.03%	\$1,609,583,691	\$977,292,972	\$632,290,719
13565	Arkansas Mut Ins Co	\$980,339	0.03%	\$3,240,754	\$516,183	\$2,724,570
20621	OneBeacon Amer Ins Co	\$964,545	0.03%	\$485,710,693	\$321,942,495	\$163,768,198
25054	Hudson Ins Co	\$951,923	0.02%	\$667,930,697	\$297,026,685	\$370,904,012
12777	Chubb Ind Ins Co	\$947,918	0.02%	\$292,556,553	\$193,618,313	\$98,938,240
33588	First Liberty Ins Corp	\$919,565	0.02%	\$52,963,974	\$29,313,356	\$23,650,618
39942	American Natl Gen Ins Co	\$913,420	0.02%	\$115,577,766	\$53,795,767	\$61,781,999
26492	Courtesy Ins Co	\$898,978	0.02%	\$490,348,502	\$287,988,530	\$202,359,973
39969	American Safety Cas Ins Co	\$895,187	0.02%	\$187,193,563	\$108,056,161	\$79,137,402
19690	American Economy Ins Co	\$891,249	0.02%	\$1,256,663,965	\$1,020,377,724	\$236,286,241
40134	Castlepoint Natl Ins Co	\$890,120	0.02%	\$446,731,017	\$331,788,989	\$114,942,028
10120	Everest Natl Ins Co	\$884,697	0.02%	\$447,684,562	\$296,658,724	\$151,025,838
27928	Amex Assur Co	\$882,644	0.02%	\$266,947,280	\$60,433,745	\$206,513,535
11452	Hartford Steam Boil Inspec & Ins Co	\$869,671	0.02%	\$1,340,556,826	\$685,915,604	\$654,641,222
22748	Pacific Employers Ins Co	\$856,617	0.02%	\$2,747,755,018	\$1,769,944,298	\$977,810,720
35386	Fidelity & Guar Ins Co	\$843,212	0.02%	\$46,794,487	\$27,628,471	\$19,166,016
21881	National Surety Corp	\$840,382	0.02%	\$482,066,645	\$346,210,013	\$135,856,632
11004	Alfa Specialty Ins Corp	\$833,806	0.02%	\$38,741,544	\$20,749,224	\$17,992,319
14206	Holyoke Mut Ins Co In Salem	\$812,425	0.02%	\$200,321,761	\$112,993,982	\$87,327,779
20613	Sparta Ins Co	\$805,305	0.02%	\$439,377,090	\$188,557,217	\$250,819,873
11042	Stonetrust Commercial Ins Co	\$804,578	0.02%	\$62,792,630	\$43,639,300	\$19,153,330
40827	Virginia Surety Co Inc	\$800,885	0.02%	\$1,009,071,724	\$715,015,367	\$294,056,357
10639	Attorneys Liab Assur Society Inc RRG	\$796,651	0.02%	\$185,919,207	\$135,084,093	\$50,835,114
38970	Markel Ins Co	\$791,451	0.02%	\$732,491,366	\$538,415,490	\$194,075,876
27740	North Pointe Ins Co	\$788,754	0.02%	\$114,307,178	\$70,420,358	\$43,886,820
21105	North River Ins Co	\$782,044	0.02%	\$880,495,501	\$480,637,342	\$399,858,159
23582	Harleysville Ins Co	\$780,584	0.02%	\$142,516,613	\$107,898,794	\$34,617,819
10952	Stonebridge Cas Ins Co	\$780,018	0.02%	\$305,236,517	\$196,384,444	\$108,852,073
42617	MAG Mut Ins Co	\$766,012	0.02%	\$1,480,735,959	\$939,407,030	\$541,328,929
20702	Ace Fire Underwriters Ins Co	\$763,501	0.02%	\$98,578,317	\$32,419,928	\$66,158,389
12416	Protective Ins Co	\$761,981	0.02%	\$620,605,581	\$255,511,962	\$365,093,619
15580	Scottsdale Ind Co	\$758,126	0.02%	\$50,325,030	\$16,372,686	\$33,952,344
36234	Preferred Professional Ins Co	\$751,143	0.02%	\$372,209,345	\$209,045,689	\$163,163,656
37540	Beazley Ins Co Inc	\$741,334	0.02%	\$232,326,588	\$116,231,639	\$116,094,949
33898	Aegis Security Ins Co	\$739,939	0.02%	\$77,392,008	\$35,244,808	\$42,147,200
36463	Discover Prop & Cas Ins Co	\$733,977	0.02%	\$196,915,595	\$134,755,368	\$62,160,226
37915	Essentia Ins Co	\$731,545	0.02%	\$47,720,586	\$16,159,949	\$31,560,637
32603	Berkley Ins Co	\$726,505	0.02%	\$7,517,455,064	\$4,893,763,414	\$2,623,691,650
10103	American Agricultural Ins Co	\$719,024	0.02%	\$1,132,444,251	\$638,440,162	\$494,004,089
35408	Delos Ins Co	\$708,190	0.02%	\$666,802,976	\$446,737,308	\$220,065,668
10676	First Guard Ins Co	\$703,933	0.02%	\$15,630,272	\$500,269	\$15,130,003
38369	Northern Assur Co of Amer	\$691,143	0.02%	\$155,236,163	\$97,674,144	\$57,562,019
21849	American Automobile Ins Co	\$686,992	0.02%	\$378,569,837	\$226,479,591	\$152,090,246
20117	California Cas Ind Exch	\$681,702	0.02%	\$566,612,457	\$226,414,898	\$340,197,559
10051	Lyndon Southern Ins Co	\$672,010	0.02%	\$44,654,493	\$29,334,377	\$15,320,116
12300	American Contractors Ins Co RRG	\$645,492	0.02%	\$16,808,989	\$10,419,621	\$6,389,368
40258	Chartis Cas Co	\$640,249	0.02%	\$41,208,939	\$356,365	\$40,852,574
11592	International Fidelity Ins Co	\$638,591	0.02%	\$229,995,658	\$135,294,626	\$94,701,032
42552	Nova Cas Co	\$623,899	0.02%	\$100,607,162	\$12,206,387	\$88,400,775
19631	American Road Ins Co	\$615,010	0.02%	\$528,549,413	\$254,131,328	\$274,418,084
22098	Grain Dealers Mut Ins Co	\$609,319	0.02%	\$18,746,022	\$11,084,169	\$7,661,853

## ***Property and Casualty (Cont.)***

NAIC	Company Name	AR Premium	Market Share	Assets	Liabilities	Capital & Surplus
16381	Farmers Union Coop Ins Co	\$604,122	0.02%	\$7,692,385	\$718,335	\$6,974,050
12305	Accident Fund Natl Ins Co	\$601,152	0.02%	\$194,897,313	\$142,354,329	\$52,542,984
11853	Ranchers & Farmers Ins Co	\$599,043	0.02%	\$8,207,027	\$3,165,641	\$5,041,387
20346	Pacific Ind Co	\$587,385	0.02%	\$6,207,721,710	\$3,783,579,441	\$2,424,142,269
12907	Southwest Physicians RRG Inc	\$586,611	0.02%	\$37,455,375	\$29,842,781	\$7,612,594
18708	Ambac Assur Corp	\$586,496	0.02%	\$7,940,034,635	\$6,913,114,454	\$1,026,920,181
15563	SeaBright Ins Co	\$582,590	0.02%	\$880,673,397	\$579,339,592	\$301,333,805
10472	Capitol Ind Corp	\$581,743	0.02%	\$431,445,199	\$244,271,252	\$187,173,947
12866	T H E Ins Co	\$580,174	0.02%	\$163,840,517	\$111,925,682	\$51,914,835
21261	Electric Ins Co	\$578,442	0.02%	\$1,406,629,655	\$958,863,085	\$447,766,570
44300	Tower Ins Co of NY	\$573,715	0.02%	\$900,078,356	\$633,723,154	\$266,355,202
22039	General Reins Corp	\$572,508	0.01%	\$14,388,773,992	\$5,069,329,794	\$9,319,444,198
40517	Advantage Workers Comp Ins Co	\$571,507	0.01%	\$132,689,055	\$65,844,653	\$66,844,402
43494	American Hallmark Ins Co of TX	\$566,624	0.01%	\$289,881,637	\$180,180,913	\$109,700,724
28339	Gateway Ins Co	\$564,307	0.01%	\$48,739,608	\$31,896,502	\$16,843,106
13412	Austin Mut Ins Co	\$563,990	0.01%	\$147,408,126	\$98,261,925	\$49,146,201
26433	Harco Natl Ins Co	\$555,501	0.01%	\$317,945,318	\$171,187,606	\$146,757,712
10708	Lemic Ins Co	\$548,047	0.01%	\$65,646,125	\$45,400,772	\$20,245,353
21784	Firemens Ins Co of Washington DC	\$547,044	0.01%	\$80,966,452	\$50,371,621	\$30,594,831
21970	OneBeacon Ins Co	\$534,075	0.01%	\$2,351,767,646	\$1,429,726,133	\$922,041,513
29874	North Amer Specialty Ins Co	\$520,246	0.01%	\$472,982,553	\$156,243,359	\$316,739,194
24724	First Natl Ins Co of Amer	\$518,801	0.01%	\$206,301,824	\$160,276,511	\$46,025,313
24775	St Paul Guardian Ins Co	\$516,899	0.01%	\$75,237,843	\$48,551,564	\$26,686,279
20370	AXIS Reins Co	\$508,695	0.01%	\$2,135,382,571	\$1,465,412,942	\$669,969,629
35769	Lyndon Prop Ins Co	\$501,254	0.01%	\$389,289,163	\$203,954,493	\$185,334,670
21172	Vanliner Ins Co	\$500,057	0.01%	\$462,714,083	\$356,378,382	\$106,335,701
20362	Mitsui Sumitomo Ins Co of Amer	\$497,514	0.01%	\$744,761,856	\$469,579,030	\$275,182,826
12304	Accident Fund Gen Ins Co	\$492,788	0.01%	\$119,516,918	\$85,180,042	\$34,336,876
41343	HDI Gerling Amer Ins Co	\$489,282	0.01%	\$223,482,772	\$116,623,445	\$106,859,327
41424	Pennsylvania Manufacturers Ind Co	\$488,345	0.01%	\$190,630,188	\$108,571,565	\$82,058,623
22683	Teachers Ins Co	\$485,043	0.01%	\$296,345,954	\$183,767,627	\$112,578,327
24732	General Ins Co of Amer	\$484,215	0.01%	\$2,079,615,242	\$1,670,004,095	\$409,611,147
42498	Cameron Natl Ins Co	\$484,103	0.01%	\$13,861,188	\$7,166,616	\$6,694,572
25895	United States Liab Ins Co	\$466,542	0.01%	\$552,368,479	\$194,964,900	\$357,403,579
19372	Northern Ins Co of NY	\$462,075	0.01%	\$44,047,995	\$13,811,168	\$30,236,827
18619	Platte River Ins Co	\$459,445	0.01%	\$152,718,678	\$112,022,141	\$40,696,537
14494	Merchants Bonding Co a Mut	\$456,473	0.01%	\$98,642,269	\$33,151,121	\$65,491,148
24066	American Fire & Cas Co	\$452,625	0.01%	\$173,018,676	\$128,662,689	\$44,355,987
10916	Suretec Ins Co	\$448,587	0.01%	\$115,996,536	\$48,595,961	\$67,400,576
16608	New York Marine & Gen Ins Co	\$437,956	0.01%	\$622,200,835	\$436,716,525	\$185,484,310
25976	Utica Mut Ins Co	\$427,997	0.01%	\$2,284,500,980	\$1,517,447,419	\$767,053,561
16217	National Farmers Union Prop & Cas	\$414,373	0.01%	\$265,212,427	\$192,902,062	\$72,310,366
10718	Retailers Cas Ins Co	\$412,000	0.01%	\$57,931,489	\$33,815,136	\$24,116,353
14460	Podiatry Ins Co of Amer	\$403,812	0.01%	\$301,001,656	\$218,986,693	\$82,014,963
11832	Health Care Industry Liab Recip Ins	\$394,320	0.01%	\$154,307,271	\$146,823,351	\$7,483,920
26832	Great Amer Alliance Ins Co	\$387,934	0.01%	\$29,299,873	\$26,178	\$29,273,695
24031	Northland Cas Co	\$387,824	0.01%	\$103,159,912	\$68,347,705	\$34,812,206
10023	Alliance of Nonprofits For Ins RRG	\$383,621	0.01%	\$48,064,628	\$24,283,842	\$23,780,786
13307	Lexon Ins Co	\$372,508	0.01%	\$121,249,655	\$81,888,909	\$39,360,746
10020	United Educators Ins RRG Inc	\$370,043	0.01%	\$650,517,209	\$424,004,581	\$226,512,628
11589	Jamestown Ins Co RRG	\$369,602	0.01%	\$7,330,320	\$5,787,583	\$1,542,737
15865	NCMIC Ins Co	\$367,052	0.01%	\$539,090,272	\$356,750,238	\$182,340,034
32786	Progressive Specialty Ins Co	\$366,883	0.01%	\$1,275,310,314	\$474,957,472	\$800,352,842
12750	Evergreen Natl Ind Co	\$363,290	0.01%	\$47,510,017	\$15,030,339	\$32,479,678

## ***Property and Casualty (Cont.)***

NAIC	Company Name	AR Premium	Market Share	Assets	Liabilities	Capital & Surplus
42048	Diamond State Ins Co	\$345,339	0.01%	\$176,157,996	\$64,189,527	\$111,968,469
31348	Crum & Forster Ind Co	\$337,314	0.01%	\$36,026,832	\$21,305,300	\$14,721,532
29157	United WI Ins Co	\$332,092	0.01%	\$335,295,904	\$264,921,604	\$70,374,300
36587	21st Century Natl Ins Co	\$331,008	0.01%	\$27,472,272	\$6,430,953	\$21,041,319
44121	Oms Natl Ins Co Rrg	\$326,287	0.01%	\$333,315,844	\$201,719,408	\$131,596,436
40266	CMG Mortgage Ins Co	\$321,142	0.01%	\$392,627,164	\$287,156,717	\$105,470,447
44105	Ophthalmic Mut Ins Co RRG	\$320,697	0.01%	\$221,950,157	\$89,064,145	\$132,886,012
27847	Insurance Co of The West	\$320,632	0.01%	\$869,868,636	\$494,825,985	\$375,042,651
18279	Bankers Standard Ins Co	\$320,518	0.01%	\$359,409,065	\$205,622,179	\$153,786,886
41394	Benchmark Ins Co	\$316,531	0.01%	\$93,710,928	\$50,859,756	\$42,851,172
10216	American Contractors Ind Co	\$313,367	0.01%	\$347,555,007	\$279,400,665	\$68,154,342
10346	Employers Preferred Ins Co	\$312,602	0.01%	\$415,896,330	\$260,887,164	\$155,009,166
19941	American Commerce Ins Co	\$312,513	0.01%	\$360,787,857	\$224,626,825	\$136,161,032
23426	Oklahoma Surety Co	\$308,038	0.01%	\$28,077,194	\$12,737,960	\$15,339,234
20648	Employers Fire Ins Co	\$306,607	0.01%	\$88,191,301	\$30,084,858	\$58,106,443
31232	Work First Cas Co	\$298,833	0.01%	\$40,283,670	\$29,961,639	\$10,322,031
10367	Avemco Ins Co	\$294,902	0.01%	\$115,385,854	\$44,789,373	\$70,596,481
11573	Accident Ins Co Inc	\$291,088	0.01%	\$35,207,322	\$22,109,418	\$13,097,904
36307	Gray Ins Co	\$290,247	0.01%	\$318,089,107	\$210,114,028	\$107,975,079
41491	Geico Cas Co	\$283,344	0.01%	\$830,585,393	\$463,898,290	\$366,687,103
31887	Coface N Amer Ins Co	\$277,337	0.01%	\$109,742,633	\$59,976,816	\$49,765,817
10069	Housing Authority Prop A Mut Co	\$277,300	0.01%	\$163,620,301	\$55,284,346	\$108,335,955
32271	Dallas Natl Ins Co	\$276,617	0.01%	\$323,507,466	\$235,619,257	\$87,888,209
11223	Safeway Ins Co of AL	\$272,397	0.01%	\$52,118,947	\$21,169,556	\$30,949,391
36161	Travelers Prop Cas Ins Co	\$272,087	0.01%	\$225,601,054	\$156,481,600	\$69,119,454
12572	Selective Ins Co of Amer	\$261,832	0.01%	\$2,338,230,904	\$1,795,619,779	\$542,611,125
11598	Applied Medico Legal Solutions RRG	\$257,464	0.01%	\$71,459,887	\$50,787,287	\$20,672,600
10083	The Natl Catholic RRG Inc	\$256,536	0.01%	\$64,633,223	\$45,894,172	\$18,739,051
31089	Repwest Ins Co	\$250,337	0.01%	\$237,946,369	\$112,844,758	\$125,101,611
28258	Continental Ind Co	\$250,303	0.01%	\$60,759,560	\$37,857,498	\$22,902,063
33022	AXA Ins Co	\$248,476	0.01%	\$182,671,819	\$68,573,527	\$114,098,292
28460	Sentry Cas Co	\$248,155	0.01%	\$176,506,841	\$108,738,402	\$67,768,439
12870	Sentruity Cas Co	\$245,999	0.01%	\$37,997,099	\$14,839,953	\$23,157,146
22578	Horace Mann Ins Co	\$239,578	0.01%	\$370,753,622	\$215,885,564	\$154,868,058
14249	Founders Ins Co	\$233,220	0.01%	\$241,409,286	\$171,466,286	\$69,943,000
23353	Meridian Security Ins Co	\$228,071	0.01%	\$80,479,174	\$47,860,837	\$32,618,337
27855	Zurich Amer Ins Co of IL	\$227,578	0.01%	\$46,511,886	\$9,168,852	\$37,343,034
25585	Professionals Direct Ins Co	\$222,788	0.01%	\$20,819,861	\$1,379,332	\$19,440,529
30325	Zale Ind Co	\$217,164	0.01%	\$20,659,042	\$7,462,225	\$13,196,817
24319	Darwin Select Ins Co	\$215,285	0.01%	\$164,234,176	\$111,739,130	\$52,495,046
36781	John Deere Ins Co	\$214,539	0.01%	\$38,473,000	\$10,005,589	\$28,467,411
40444	Old Republic Surety Co	\$213,930	0.01%	\$102,399,616	\$56,636,713	\$45,762,903
10353	Ooida RRG Inc	\$213,710	0.01%	\$56,534,877	\$36,489,778	\$20,045,099
41238	Trans Pacific Ins Co	\$206,887	0.01%	\$67,242,330	\$19,610,153	\$47,632,177
44237	Mental Health RRG	\$206,479	0.01%	\$20,327,614	\$11,150,222	\$9,177,392
12754	Medicus Ins Co	\$203,459	0.01%	\$112,905,288	\$81,486,022	\$31,419,266
28886	Transguard Ins Co of Amer Inc	\$200,076	0.01%	\$214,737,816	\$123,584,097	\$91,153,719
30945	Plaza Ins Co	\$198,378	0.01%	\$28,917,350	\$17,852,657	\$11,064,693
37060	Old United Cas Co	\$196,975	0.01%	\$444,486,490	\$216,905,866	\$227,580,624
10235	American Southern Ins Co	\$195,353	0.01%	\$98,106,892	\$59,390,364	\$38,716,528
13978	Florists Mut Ins Co	\$194,429	0.01%	\$158,387,242	\$108,188,417	\$50,198,825
14788	NGM Ins Co	\$194,260	0.01%	\$2,010,409,468	\$1,248,409,089	\$762,000,379
25887	United States Fidelity & Guar Co	\$191,339	0.01%	\$4,599,086,294	\$2,141,137,360	\$2,457,948,934
10052	Chubb Natl Ins Co	\$188,967	0.00%	\$228,022,616	\$129,371,310	\$98,651,306

## ***Property and Casualty (Cont.)***

NAIC	Company Name	AR Premium	Market Share	Assets	Liabilities	Capital & Surplus
33162	Bankers Ins Co	\$187,451	0.00%	\$119,974,759	\$74,840,525	\$45,134,234
12718	Developers Surety & Ind Co	\$185,106	0.00%	\$130,666,333	\$48,201,711	\$82,464,622
32778	Washington Intl Ins Co	\$183,837	0.00%	\$117,475,838	\$56,751,920	\$60,723,918
15962	Kansas Bankers Surety Co	\$174,087	0.00%	\$161,936,250	\$21,264,965	\$140,671,285
29580	Berkley Regional Ins Co	\$171,321	0.00%	\$2,687,601,246	\$1,997,719,784	\$689,881,462
34924	Dakota Truck Underwriters	\$170,010	0.00%	\$86,450,750	\$57,299,732	\$29,151,018
10936	Seneca Ins Co Inc	\$165,379	0.00%	\$384,646,890	\$202,562,466	\$182,084,424
34495	Doctors Co An Interins Exch	\$162,580	0.00%	\$2,564,018,937	\$1,322,781,986	\$1,241,236,952
44130	Paratransit RRG Grp Ins Co	\$153,310	0.00%	\$22,091,115	\$13,539,170	\$8,551,945
26662	Milwaukee Cas Ins Co	\$153,128	0.00%	\$20,646,306	\$9,047,799	\$11,598,508
36650	Guarantee Co of N Amer USA	\$152,370	0.00%	\$196,815,927	\$64,291,357	\$132,524,570
22551	Mitsui Sumitomo Ins USA Inc	\$148,227	0.00%	\$109,165,089	\$52,710,132	\$56,454,957
10476	STICO Mut Ins Co RRG	\$143,996	0.00%	\$18,509,972	\$8,563,394	\$9,946,578
22810	Chicago Ins Co	\$139,194	0.00%	\$187,569,663	\$132,629,750	\$54,939,913
21296	Alterra Amer Ins Co	\$137,298	0.00%	\$126,686,255	\$14,915,745	\$111,770,510
38962	Genesis Ins Co	\$136,935	0.00%	\$188,470,233	\$77,964,701	\$110,505,532
10084	Title Industry Assur Co RRG	\$130,975	0.00%	\$7,641,014	\$5,608,504	\$2,032,510
23647	Ironshore Ind Inc	\$128,550	0.00%	\$155,543,411	\$61,780,782	\$93,762,629
22756	Horace Mann Prop & Cas Ins Co	\$124,703	0.00%	\$220,873,658	\$129,764,827	\$91,108,831
35505	Rockwood Cas Ins Co	\$124,263	0.00%	\$239,112,071	\$155,146,569	\$83,965,502
45934	American Compensation Ins Co	\$122,138	0.00%	\$110,107,551	\$60,874,194	\$49,233,357
35181	Executive Risk Ind Inc	\$121,438	0.00%	\$2,838,519,398	\$1,726,745,529	\$1,111,773,869
10815	Verlan Fire Ins Co MD	\$117,999	0.00%	\$22,766,353	\$52,684	\$22,713,669
26611	Valiant Ins Co	\$115,592	0.00%	\$84,981,971	\$30,753,876	\$54,228,095
31968	Merastar Ins Co	\$115,021	0.00%	\$40,381,200	\$25,577,501	\$14,803,699
24139	Old Republic Gen Ins Corp	\$111,445	0.00%	\$1,127,300,949	\$824,599,052	\$302,701,897
11967	General Star Natl Ins Co	\$109,165	0.00%	\$279,972,856	\$105,949,045	\$174,023,811
37893	Ullico Cas Co	\$109,034	0.00%	\$320,687,205	\$217,880,197	\$102,807,008
10222	PACO Assur Co Inc	\$107,285	0.00%	\$65,439,118	\$42,000,073	\$23,439,045
36927	Colony Specialty Ins Co	\$104,167	0.00%	\$123,609,242	\$45,473,030	\$78,136,212
12472	LUBA Cas Ins Co	\$103,458	0.00%	\$184,824,056	\$121,014,735	\$63,809,321
42986	Standard Guar Ins Co	\$102,990	0.00%	\$175,657,472	\$87,248,813	\$88,408,659
10794	Companion Commercial Ins Co	\$102,074	0.00%	\$15,559,640	\$6,503,079	\$9,056,561
13613	College RRG Inc	\$100,804	0.00%	\$9,357,236	\$6,156,078	\$3,201,158
25448	American Safety RRG Inc	\$100,694	0.00%	\$16,505,436	\$11,299,005	\$5,206,430
14990	Pennsylvania Natl Mut Cas Ins Co	\$99,791	0.00%	\$1,126,921,544	\$639,773,221	\$487,148,323
25422	Atradius Trade Credit Ins Co	\$98,216	0.00%	\$98,053,426	\$40,652,293	\$57,401,134
36897	Manufacturers Alliance Ins Co	\$97,796	0.00%	\$177,552,041	\$106,125,500	\$71,426,541
25186	Emc Prop & Cas Ins Co	\$97,625	0.00%	\$135,935,880	\$69,536,519	\$66,399,361
38601	MIC Prop & Cas Ins Corp	\$94,606	0.00%	\$127,688,091	\$75,545,733	\$52,142,358
38911	Berkley Natl Ins Co	\$92,988	0.00%	\$36,538,476	\$5,816,377	\$30,722,099
36072	National Guardian RRG Inc	\$90,056	0.00%	\$16,442,471	\$11,816,393	\$4,626,078
19984	ACIG Ins Co	\$85,531	0.00%	\$325,813,824	\$238,477,448	\$87,336,376
43699	American Federation Ins Co	\$81,538	0.00%	\$16,992,367	\$1,116,856	\$15,875,511
35629	Association Cas Ins Co	\$80,625	0.00%	\$45,329,731	\$25,444,814	\$19,884,917
12209	Restoration RRG Inc	\$78,198	0.00%	\$38,786,250	\$25,996,689	\$12,789,561
43265	Gramercy Ins Co	\$77,051	0.00%	\$49,788,120	\$33,767,225	\$16,020,895
26797	Housing Authority RRG Inc	\$73,569	0.00%	\$297,850,915	\$141,671,031	\$156,179,884
37850	Pacific Specialty Ins Co	\$72,478	0.00%	\$283,467,263	\$129,693,407	\$153,773,856
37206	Contractors Bonding & Ins Co	\$69,909	0.00%	\$215,373,202	\$103,450,520	\$111,922,682
25224	Great Divide Ins Co	\$68,933	0.00%	\$191,798,576	\$123,252,892	\$68,545,683
12189	Oceanus Ins Co A RRG	\$67,860	0.00%	\$63,716,276	\$46,925,599	\$16,790,677
13126	Midwest Builders Cas Mut Co	\$65,284	0.00%	\$72,280,513	\$32,888,527	\$39,391,986
23248	Occidental Fire & Cas Co of NC	\$62,276	0.00%	\$273,463,360	\$152,752,884	\$120,710,476

## ***Property and Casualty (Cont.)***

NAIC	Company Name	AR Premium	Market Share	Assets	Liabilities	Capital & Surplus
10671	The Gray Cas & Surety Co	\$61,769	0.00%	\$16,606,332	\$1,849,347	\$14,756,984
13722	Knightbrook Ins Co	\$59,712	0.00%	\$51,497,085	\$23,415,700	\$28,081,385
13269	Zenith Ins Co	\$58,643	0.00%	\$1,703,545,873	\$1,013,391,735	\$690,154,139
11206	Housing Enterprise Ins Co Inc	\$57,591	0.00%	\$42,669,416	\$17,174,784	\$25,494,632
37710	First Amer Prop & Cas Ins Co	\$56,611	0.00%	\$85,951,544	\$44,171,210	\$41,780,334
10752	Novus Ins Co RRG	\$55,808	0.00%	\$21,081,878	\$18,483,105	\$2,598,773
29700	North Amer Elite Ins Co	\$54,840	0.00%	\$46,354,100	\$12,270,026	\$34,084,074
13177	ARCOA RRG Inc	\$54,132	0.00%	\$7,536,847	\$4,767,427	\$2,769,420
21903	Procentury Ins Co	\$53,971	0.00%	\$150,472,146	\$117,547,906	\$32,924,240
10758	Colonial Surety Co	\$50,378	0.00%	\$39,996,512	\$19,787,167	\$20,209,346
10200	Hiscox Ins Co Inc	\$50,161	0.00%	\$67,630,365	\$12,545,323	\$55,085,042
27081	Bond Safeguard Ins Co	\$49,660	0.00%	\$75,352,555	\$50,517,472	\$24,835,083
36153	Aetna Ins Co of CT	\$49,199	0.00%	\$30,877,245	\$13,332,947	\$17,544,298
13200	Universal Surety of Amer	\$46,518	0.00%	\$24,337,198	\$9,951,505	\$14,385,693
26565	Ohio Ind Co	\$46,063	0.00%	\$98,304,313	\$53,102,172	\$45,202,141
36684	Riverport Ins Co	\$45,970	0.00%	\$106,407,703	\$63,959,582	\$42,448,121
10754	Spirit Mountain Ins Co RRG Inc	\$44,931	0.00%	\$6,339,896	\$3,556,709	\$2,783,187
15474	National Lloyds Ins Co	\$43,917	0.00%	\$177,309,829	\$83,229,200	\$94,080,629
28519	First Sealord Surety Inc	\$43,600	0.00%	\$12,060,163	\$1,424,544	\$10,635,619
15679	National Fire & Ind Exch	\$43,370	0.00%	\$12,140,148	\$6,906,913	\$5,233,235
25984	Graphic Arts Mut Ins Co	\$43,130	0.00%	\$133,775,462	\$84,833,967	\$48,941,495
12294	Southwest Marine & Gen Ins Co	\$42,752	0.00%	\$68,409,160	\$39,252,529	\$29,156,631
29823	Genworth Residential Mortgage Ins Co	\$39,918	0.00%	\$217,056,985	\$103,360,517	\$113,696,468
11267	Security Amer RRG Inc	\$39,740	0.00%	\$4,661,503	\$2,033,583	\$2,627,920
35963	AF&L Ins Co	\$39,295	0.00%	\$177,930,729	\$177,128,622	\$802,108
10701	Bridgefield Employers Ins Co	\$36,245	0.00%	\$129,196,583	\$22,842,969	\$106,353,614
11600	Frank Winston Crum Ins Inc	\$35,485	0.00%	\$52,449,183	\$37,756,476	\$14,692,707
22241	Medmarc Cas Ins Co	\$31,787	0.00%	\$95,659,639	\$56,238,687	\$39,420,952
10801	Fortress Ins Co	\$29,289	0.00%	\$53,806,938	\$31,743,024	\$22,063,914
12172	Claim Professionals Liab ins Co RRG	\$28,905	0.00%	\$2,797,629	\$1,570,780	\$1,226,849
10232	American Assoc of Orthodontists RRG	\$28,130	0.00%	\$32,361,057	\$24,217,713	\$8,143,344
21865	Associated Ind Corp	\$26,899	0.00%	\$170,114,372	\$92,578,012	\$77,536,360
16810	American Mercury Ins Co	\$26,508	0.00%	\$322,069,548	\$214,781,960	\$107,287,588
29530	AXA Art Ins Corp	\$25,195	0.00%	\$46,640,041	\$16,889,878	\$29,750,163
16667	United Guar Residential Ins Co of NC	\$24,788	0.00%	\$819,083,381	\$523,030,690	\$296,052,691
36765	Gulf Guar Ins Co	\$24,465	0.00%	\$5,090,647	\$1,124,292	\$3,966,355
41513	Foremost Signature Ins Co	\$24,427	0.00%	\$53,920,497	\$34,890,992	\$19,029,505
10243	National Continental Ins Co	\$24,272	0.00%	\$254,008,889	\$203,109,809	\$50,899,080
12579	Nationweld RRG Inc	\$23,194	0.00%	\$1,462,523	\$221,899	\$1,240,624
11177	First Fin Ins Co	\$22,873	0.00%	\$518,212,632	\$162,059,427	\$356,153,205
13179	ProAir RRG Inc	\$20,714	0.00%	\$834,818	\$296,986	\$537,831
11153	Titan Ins Co Inc RRG	\$19,710	0.00%	\$27,589,808	\$5,739,949	\$21,849,859
22713	Insurance Co of N Amer	\$19,633	0.00%	\$811,425,093	\$507,688,941	\$303,736,152
44016	National Home Ins Co RRG	\$19,558	0.00%	\$68,845,160	\$45,208,971	\$23,636,189
30112	CNL Ins Amer Inc	\$19,284	0.00%	\$33,709,503	\$13,433,775	\$20,275,728
37923	Seaworthy Ins Co	\$18,069	0.00%	\$61,972,944	\$31,232,954	\$30,739,990
30082	CPA Ins Co	\$17,346	0.00%	\$8,281,500	\$995,624	\$7,285,876
42862	Universal Cas Co	\$16,827	0.00%	\$77,932,243	\$70,226,977	\$7,705,266
28860	RLI Ind Co	\$15,925	0.00%	\$41,703,221	\$1,007,573	\$40,695,648
11710	Allied Professionals Ins Co RRG	\$15,434	0.00%	\$22,114,702	\$13,071,838	\$9,042,864
18694	Great Midwest Ins Co	\$14,226	0.00%	\$78,783,267	\$28,777,320	\$50,005,947
13580	ARISE Boiler Inspection & Ins Co RRG	\$14,086	0.00%	\$2,040,435	\$596,427	\$1,444,008
10499	Chrysler Ins Co	\$13,760	0.00%	\$216,043,987	\$83,271,129	\$132,772,858
40169	Metropolitan Cas Ins Co	\$13,733	0.00%	\$46,909,545	\$401,677	\$46,507,868

## ***Property and Casualty (Cont.)***

NAIC	Company Name	AR Premium	Market Share	Assets	Liabilities	Capital & Surplus
26999	United Guar Mortgage Ind Co	\$12,054	0.00%	\$411,123,908	\$278,521,082	\$132,602,826
12041	MBIA Ins Corp	\$12,000	0.00%	\$3,458,449,732	\$2,383,747,572	\$1,074,702,160
10113	Terra Ins Co RRG	\$11,213	0.00%	\$27,633,984	\$9,387,799	\$18,246,185
24104	Ohio Farmers Ins Co	\$11,195	0.00%	\$1,661,104,519	\$278,205,565	\$1,382,898,954
10003	Excess Share Ins Corp	\$10,646	0.00%	\$54,850,680	\$34,496,081	\$20,354,599
22950	Acstar Ins Co	\$9,778	0.00%	\$78,365,651	\$48,199,835	\$30,165,816
37621	Toyota Motor Ins Co	\$9,474	0.00%	\$394,811,275	\$256,051,912	\$138,759,363
11579	Old Glory Ins Co	\$8,494	0.00%	\$18,112,977	\$10,058,201	\$8,054,775
24678	Arrowood Ind Co	\$7,167	0.00%	\$1,975,021,565	\$1,653,839,282	\$321,182,283
39527	Heritage Ind Co	\$7,103	0.00%	\$199,192,479	\$114,526,029	\$84,666,450
13792	New Home Warranty Ins Co a RRG	\$6,589	0.00%	\$8,749,494	\$3,138,140	\$5,611,354
18430	Agricultural Workers Mut Auto Ins	\$6,421	0.00%	\$60,922,790	\$34,729,792	\$26,192,998
10749	Intrepid Ins Co	\$6,400	0.00%	\$29,382,529	\$1,948,299	\$27,434,230
36340	Camico Mut Ins Co	\$6,169	0.00%	\$130,885,445	\$95,828,657	\$35,056,788
40940	Western Pacific Mut Ins Co RRG	\$5,715	0.00%	\$134,314,186	\$50,006,497	\$84,307,689
11033	Automotive Underwriters Ins Co A RRG	\$5,708	0.00%	\$23,555,572	\$14,556,570	\$8,999,002
11123	Safety First Ins Co	\$5,567	0.00%	\$15,826,880	\$2,596,274	\$13,230,606
26905	Century Natl Ins Co	\$5,495	0.00%	\$529,851,410	\$205,449,674	\$324,401,736
15911	American Mining Ins Co Inc	\$4,755	0.00%	\$29,952,730	\$5,831,894	\$24,120,836
10234	National Serv Contract Ins Co RRG	\$4,603	0.00%	\$14,502,887	\$2,058,792	\$12,444,095
36560	Service Ins Co	\$4,492	0.00%	\$22,769,807	\$2,735,673	\$20,034,133
20532	Clarendon Natl Ins Co	\$4,474	0.00%	\$741,108,232	\$471,422,857	\$269,685,375
26379	Accredited Surety & Cas Co Inc	\$3,993	0.00%	\$23,403,242	\$6,235,817	\$17,167,426
20796	21st Century Premier Ins Co	\$3,955	0.00%	\$263,893,860	\$63,942,444	\$199,951,416
11197	National Independent Truckers IC RRG	\$3,731	0.00%	\$8,006,636	\$3,004,212	\$5,002,424
32859	Penn Amer Ins Co	\$3,510	0.00%	\$320,762,730	\$126,774,012	\$193,988,718
11114	St Charles Ins Co RRG	\$3,389	0.00%	\$12,317,564	\$6,999,215	\$5,318,349
13677	Affiliates Ins Recip a RRG	\$3,337	0.00%	\$2,627,956	\$690,972	\$1,936,984
11231	Generali Us Branch	\$3,314	0.00%	\$54,937,542	\$29,418,933	\$25,518,609
10164	CPA Mut Ins Co of Amer RRG	\$3,312	0.00%	\$23,350,841	\$13,082,266	\$10,268,575
12190	American Pet Ins Co	\$2,946	0.00%	\$11,219,872	\$1,691,591	\$9,528,281
12938	Federal Motor Carriers RRG Inc	\$2,463	0.00%	\$11,865,487	\$8,886,537	\$2,978,950
13986	Frankenmuth Mut Ins Co	\$2,233	0.00%	\$927,032,985	\$543,711,417	\$383,321,569
27154	Atlantic Specialty Ins Co	\$2,000	0.00%	\$59,147,371	\$11,829,921	\$47,317,450
12631	American Builders Ins Co RRG Inc	\$1,976	0.00%	\$1,569,264	\$817,700	\$751,564
31453	Financial Pacific Ins Co	\$1,869	0.00%	\$243,899,620	\$166,716,329	\$77,183,291
11063	Vehicular Serv Ins Co RRG	\$1,850	0.00%	\$2,535,022	\$638,201	\$1,896,821
26581	Independence Amer Ins Co	\$1,827	0.00%	\$72,503,156	\$25,111,077	\$47,392,079
43974	21st Century Ind Ins Co	\$1,543	0.00%	\$53,830,652	\$13,041,098	\$40,789,554
10008	Western Ins Co	\$1,477	0.00%	\$36,830,224	\$19,531,409	\$17,298,815
23434	Middlesex Ins Co	\$1,431	0.00%	\$617,583,877	\$379,264,712	\$238,319,165
10991	Global Intl Ins Co Inc A RRG	\$1,200	0.00%	\$17,981,503	\$692,798	\$17,288,705
22861	Southern Pilot Ins Co	\$1,044	0.00%	\$37,806,707	\$26,015,600	\$11,791,107
13634	Essent Guar Inc	\$896	0.00%	\$166,842,567	\$6,573,901	\$160,268,666
25933	Universal Surety Co	\$878	0.00%	\$116,690,751	\$33,034,177	\$83,656,574
37940	Lexington Natl Ins Corp	\$760	0.00%	\$55,409,913	\$36,390,570	\$19,019,343
10691	Residential Ins Co Inc A RRG	\$589	0.00%	\$2,828,631	\$1,996,672	\$831,959
12297	Petroleum Cas Co	\$585	0.00%	\$29,803,517	\$8,228,216	\$21,575,301
33855	Lincoln Gen Ins Co	\$578	0.00%	\$398,774,120	\$395,394,013	\$3,380,107
22985	Sequoia Ins Co	\$500	0.00%	\$215,899,145	\$130,155,809	\$85,743,336
39039	Rural Comm Ins Co	\$427	0.00%	\$3,647,427,949	\$3,088,256,253	\$559,171,696
11030	Memco Ind Co	\$415	0.00%	\$163,605,837	\$100,470,823	\$63,135,014
18740	MGIC Ind Corp	\$368	0.00%	\$230,200,076	\$484,312	\$229,715,764
18759	Genworth Residential Mortgage Assur	\$265	0.00%	\$30,051,893	\$4,432,954	\$25,618,939

## ***Property and Casualty (Cont.)***

NAIC	Company Name	AR Premium	Market Share	Assets	Liabilities	Capital & Surplus
34762	Sunz Ins Co	\$260	0.00%	\$24,608,543	\$18,329,251	\$6,279,292
16675	Genworth Mortgage Ins Corp of NC	\$259	0.00%	\$485,096,854	\$351,392,417	\$133,704,437
23515	Midwestern Ind Co	\$104	0.00%	\$28,966,969	\$2,765,625	\$26,201,344
10724	Eastern Alliance Ins Co	\$93	0.00%	\$146,679,193	\$99,207,978	\$47,471,215
19178	Southern Guar Ins Co	\$85	0.00%	\$180,164,073	\$135,860,873	\$44,303,200
40436	Stratford Ins Co	\$70	0.00%	\$173,840,982	\$107,744,260	\$66,096,722
25879	Fidelity & Guar Ins Underwriters Inc	\$50	0.00%	\$180,975,279	\$79,867,760	\$101,107,519
29513	The Bar Plan Mut Ins Co	\$35	0.00%	\$56,080,248	\$33,831,527	\$22,248,721
32077	Heritage Cas Ins Co	\$8	0.00%	\$82,097,207	\$15,583,247	\$66,513,960
12171	AmeriGuard RRG Inc	\$7	0.00%	\$12,994,748	\$5,820,099	\$7,174,649
22977	Lumbermens Mut Cas Co	\$3	0.00%	\$900,555,180	\$865,690,529	\$34,864,651
10810	Republic Fire & Cas Ins Co	\$2	0.00%	\$9,078,741	\$293,539	\$8,785,202
	<b>TOTAL</b>	<b>\$3,818,215,818</b>	<b>100.00%</b>			

## ***Title***

NAIC	Company Name	AR Premium	Market Share	Assets	Liabilities	Capital & Surplus
50121	Stewart Title Guar Co	\$11,925,740	30.38%	\$901,268,313	\$531,757,324	\$369,510,989
50229	Chicago Title Ins Co	\$7,819,114	19.92%	\$1,887,886,838	\$1,246,001,911	\$641,884,927
50814	First Amer Title Ins Co	\$6,314,225	16.09%	\$2,238,425,503	\$1,383,802,527	\$854,622,976
51586	Fidelity Natl Title Ins Co	\$6,288,227	16.02%	\$1,326,417,510	\$1,090,145,020	\$236,272,490
50520	Old Republic Natl Title Ins Co	\$5,692,096	14.50%	\$674,680,222	\$473,673,722	\$201,006,500
50792	Southern Title Ins Corp	\$536,695	1.37%	\$23,747,153	\$16,966,982	\$6,780,171
50784	Security Title Guarantee Corp Baltim	\$322,629	0.82%	\$11,049,099	\$8,336,633	\$2,712,466
50083	Commonwealth Land Title Ins Co	\$173,788	0.44%	\$615,675,531	\$401,842,255	\$213,833,276
12522	Agents Natl Title Ins Co	\$144,234	0.37%	\$3,894,188	\$2,146,210	\$1,747,978
51152	WFG Natl Title Ins Co	\$19,490	0.05%	\$15,776,017	\$5,571,020	\$10,204,997
51411	American Guar Title Ins Co	\$9,073	0.02%	\$16,035,610	\$3,967,047	\$12,068,563
50369	Investors Title Ins Co	\$2,917	0.01%	\$105,862,923	\$58,074,463	\$47,788,460
51632	EnTitle Ins Co	\$2,246	0.01%	\$14,177,798	\$8,145,565	\$6,032,233
	<b>TOTAL</b>	<b>\$39,250,474</b>	<b>100.00%</b>			