

ARKANSAS REVENUE REPORT
October 2012

Prepared for: MEMBERS OF THE ARKANSAS GENERAL ASSEMBLY
HIGHLIGHTS OF THE MONTH AND YEAR-TO-DATE COLLECTIONS
Prepared by: THE BUREAU OF LEGISLATIVE RESEARCH

Collections of Gross General Revenues year-to-date of approximately \$1,886.1 million have increased \$41 million, or 2.2%, above the \$1,845.1 million collected last fiscal year-to-date. Net General Revenue Available for Distribution this month of \$355.6 million decreased \$9 million, or 2.5%, from the \$364.6 million available for distribution in October 2011. In accordance with Act 1315 of 1999, the Chief Fiscal Officer of the State transferred \$2,283,070.84 from Corporate Income Tax to the Workforce 2000 Development Fund for a current total of \$9,132,283.36.

COMPARISON OF THE FOUR MONTHS OF THE 2012-2013 FISCAL YEAR
DISTRIBUTION OF GROSS GENERAL REVENUES
WITH THE SAME PERIOD OF 2011-2012

	2012-2013	2011-2012	% Increase/ (Decrease)
GROSS GENERAL REVENUES	\$1,886,077,187.29	\$1,845,054,792.07	2.2%
Less: Claims & Taxes Erroneously Paid	51,679.97	35,261.03	46.6%
Uncollected Checks	998,453.10	835,357.56	19.5%
Warrant	3,752,299.33	2,028,141.08	85.0%
NET GENERAL REVENUES	\$1,881,274,754.89	\$1,842,156,032.40	2.1%
Less: State Central Services Fund	43,269,319.36	42,369,588.76	2.1%
Constitutional Officers' Fund	18,812,747.55	18,421,560.32	2.1%
Individual Income Tax Refunds	36,457,230.50	35,072,666.77	3.9%
City-County Tourist Facilities	1,404,477.00	2,635,106.00	-46.7%
Corporation Income Tax Refunds	20,077,616.95	26,719,470.82	-24.9%
Desegregation Settlement	25,000,000.00	25,000,000.00	0.0%
Water Waste Pollution Abatement Bond	5,200,000.00	5,200,000.00	0.0%
Aging & Adult Services Fund	0.00	160,130.37	-100.0%
Educational Excellence Trust Fund	95,804,683.00	93,335,609.32	2.6%
Economic Development Incentive Fund	3,529,806.55	6,844,771.23	-48.4%
College Saving Bond Fund	6,700.00	12,600.00	-46.8%
Educational Adequacy Fund	8,469,296.68	8,251,026.32	2.6%
NET AVAILABLE FOR DISTRIBUTION	\$1,623,242,877.30	\$1,578,133,502.49	2.9%

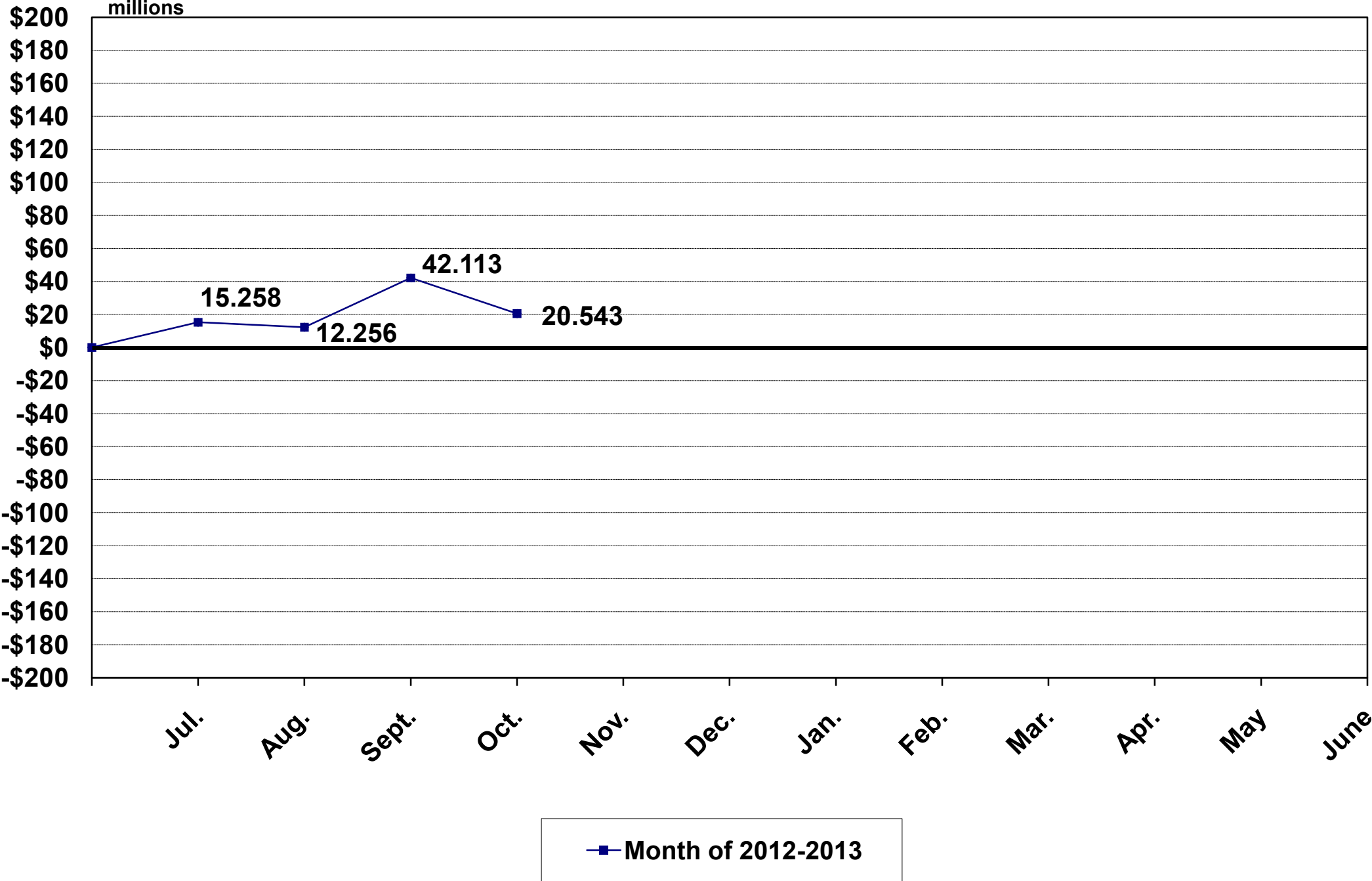
NET GENERAL REVENUE REQUIREMENTS

Revenue Stabilization Law Requirements for 2012-2013
With Dollar & Percentage Increases Needed to Fund
Allotment (A)

Allotment (A) \$4,727,500,000.00

Total Dollar Amount Required to Fund 2012-2013	
Current DFA Estimate (Allotment A)	\$4,727,500,000.00
Net General Revenues Distributed in 2011-2012	\$4,751,568,795.40
Dollar Increase (Decrease) in 2012-2013 Required over 2011-2012	(\$24,068,795.40)
Dollar Increase (Decrease) Collected Year-To-Date	\$45,109,374.81
Dollar Increase (Decrease) Required for Remainder of Year	(\$69,178,170.21)
Annual % Increase Req. to Fund 2012-2013 Current DFA Estimate	-0.507%
Annual % Required to Fund Allotment A	-0.507%

CUMULATIVE DEVIATION FROM DFA NET GENERAL REVENUES AVAILABLE FOR DISTRIBUTION FORECAST



	October 2012	October 2011	Percent Increase/ (Decrease)	Four Months 2012-2013	Four Months 2011-2012	Percent Increase/ (Decrease)
<u>GENERAL REVENUES COLLECTED</u>						
<u>BY THE REVENUE DIVISION:</u>						
<u>Gross Receipts Taxes:</u>	\$173,924,977.33	\$174,992,229.88	-0.6%	\$715,552,250.52	\$722,008,337.50	-0.9%
<u>Income Taxes:</u>						
Corporation - Final Payments	\$1,787,917.21	\$3,040,234.00	-41.2%	\$19,633,955.02	\$19,679,331.60	-0.2%
Corporation - Estimates	20,526,241.63	21,788,810.31	-5.8%	98,389,873.33	107,344,629.32	-8.3%
Individual - Final Payments	31,311,594.45	26,266,649.93	19.2%	57,007,513.34	45,453,593.28	25.4%
Individual - Withholding-Monthly	181,368,841.01	197,892,889.83	-8.3%	757,478,840.14	731,364,720.43	3.6%
Individual - Estimates	5,627,424.24	4,820,691.42	16.7%	83,583,239.60	76,808,874.98	8.8%
Total Income Taxes	\$240,622,018.54	\$253,809,275.49	-5.2%	\$1,016,093,421.43	\$980,651,149.61	3.6%
<u>Cigarette and Tobacco Taxes:</u>						
Cigarette Tax	\$14,536,311.71	\$15,417,397.81	-5.7%	\$61,033,973.87	\$65,417,096.34	-6.7%
Cigarette Permits	1,620.00	3,275.00	-50.5%	28,365.00	28,635.00	-0.9%
Cigar and Tobacco Taxes	3,969,717.50	4,537,051.87	-12.5%	16,292,217.94	17,581,838.91	-7.3%
Cigarette Paper Tax	89,491.00	70,071.80	27.7%	369,104.23	255,522.88	44.5%
Total Cigarette & Tob. Taxes	\$18,597,140.21	\$20,027,796.48	-7.1%	\$77,723,661.04	\$83,283,093.13	-6.7%
<u>Alcoholic Beverage Taxes:</u>						
Liquor Tax - \$2.50 Per Gallon	\$653,546.86	\$608,093.03	7.5%	\$2,703,580.07	\$2,342,235.91	15.4%
Liquor Permits	41,275.00	57,225.00	-27.9%	647,450.00	803,475.00	-19.4%
Retail Beer Tax	1,434,532.94	1,500,745.34	-4.4%	5,954,048.25	6,231,228.83	-4.4%
Beer Permits	11,500.00	21,350.00	-46.1%	338,715.00	327,265.00	3.5%
Wine Distribution Tax	192,743.48	99,082.37	94.5%	782,747.60	595,691.88	31.4%
Small Winery Tax	13,467.32	115,771.03	-88.4%	65,457.54	168,360.03	-61.1%
Wine Permits	2,600.00	7,000.00	-62.9%	80,650.00	84,475.00	-4.5%
Liquor Enforcement Tax	22,456.16	20,237.95	11.0%	94,852.72	41,176.44	130.4%
Wine Dist. Enforcement Tax	4,789.00	2,023.94	136.6%	13,734.98	10,639.67	29.1%
Winery Enforcement Tax	360.97	3,078.51	-88.3%	1,770.06	4,512.01	-60.8%
Beer Enforcement Tax	36,492.47	43,697.08	-16.5%	151,903.08	134,289.90	13.1%
ABC Permit Violations	22,100.00	14,600.00	51.4%	62,500.00	66,100.00	-5.4%
ABC Transcripts						
Light Wine Enforcement	95.72	64.00	49.6%	505.32	167.73	201.3%
Light Wine Tax	1,183.43	708.00	67.2%	6,097.82	1,871.90	225.8%
Light Liquor Tax	40,587.00	26,837.96	51.2%	323,056.00	106,693.09	202.8%
Sunday Sales Permits						
Temporary Sales Permit						
Total Alcohol. Beverage Taxes	\$2,477,730.35	\$2,520,514.21	-1.7%	\$11,227,068.44	\$10,918,182.39	2.8%
<u>Racing Taxes:</u>						
Dog Racing	\$64,825.44	\$66,074.75	-1.9%	\$297,015.74	\$302,771.12	-1.9%
Horse Racing	97,557.41	275,599.53	-64.6%	517,907.57	817,390.46	-36.6%

	<u>October 2012</u>	<u>October 2011</u>	<u>Percent Increase/ (Decrease)</u>	<u>Four Months 2012-2013</u>	<u>Four Months 2011-2012</u>	<u>Percent Increase/ (Decrease)</u>
Electronic Games License Fee	5,350.00	2,550.00	109.8%	10,225.00	7,050.00	45.0%
Electronic Games Privilege Fee	2,704,989.70	1,970,108.07	37.3%	10,874,066.90	7,717,721.74	40.9%
Total Racing Taxes	<u>\$2,872,722.55</u>	<u>\$2,314,332.35</u>	24.1%	<u>\$11,699,215.21</u>	<u>\$8,844,933.32</u>	32.3%
<u>Severance Tax - 3/4:</u>	\$1,707,746.78	\$1,199,312.00	42.4%	\$5,836,115.07	\$5,018,647.52	16.3%
<u>Natural Gas Severance Tax:</u>	\$197,880.19	\$267,161.87	-25.9%	\$632,624.31	\$1,056,185.99	-40.1%
<u>Estate Tax:</u>						
<u>Real Estate Transfer Tax:</u>	\$337,021.89	\$546,604.51	-38.3%	\$2,607,788.32	\$2,607,788.32	
<u>DFA Fines, Penalties and Court Cost</u>	\$8,175.00	\$15,809.50	-48.3%	\$69,911.30	\$91,943.50	-24.0%
<u>DWI Reinstatement Fee:</u>	\$17,535.00	\$16,095.00	8.9%	\$64,770.00	\$65,778.43	-1.5%
<u>DUI Reinstatement Fees:</u>	\$1,800.00	\$1,365.00	31.9%	\$6,495.00	\$5,895.00	10.2%
<u>Dyed Distillate Special Fuel Gallonage Tax:</u>	\$739,903.70	\$974,709.76	-24.1%	\$4,370,636.95	\$4,901,338.88	-10.8%
<u>Miscellaneous Taxes:</u>						
Vending Machine Decal Act 344 of '97	16,051.04	5,197.80	208.8%	\$562,786.12	\$254,104.00	121.5%
Bingo Registration Fee	970.00	1,860.00	-47.8%	\$10,300.00	\$10,000.00	3.0%
Bingo Gross Receipts Tax	23,621.70	26,729.11	-11.6%	\$87,948.60	\$86,390.46	1.8%
Total Miscellaneous Taxes	<u>\$40,642.74</u>	<u>\$33,786.91</u>	20.3%	<u>\$661,034.72</u>	<u>\$350,494.46</u>	88.6%
<u>SUBTOTAL REVENUE DIVISION</u>	<u>\$441,545,294.28</u>	<u>\$456,718,992.96</u>	-3.3%	<u>\$1,846,544,992.31</u>	<u>\$1,819,803,768.05</u>	1.5%
<u>GENERAL REVENUES</u>						
<u>COLLECTED BY OTHER AGENCIES:</u>						
<u>Secretary of State:</u>						
Franchise Tax	\$480,462.70	\$185,432.90	159.1%	\$1,748,458.61	\$1,329,329.35	31.5%
Anonymous Campaign Contribution				\$1,476.08		
Fictitious Name Penalty						
<u>Insurance Department:</u>						
Premium Tax	\$936,607.56	\$877,521.56	6.7%	\$21,263,804.16	\$21,770,927.69	-2.3%
<u>Labor Department:</u>						
Employment Agency Tax				\$9,950.00	\$4,400.00	126.1%
<u>State Auditor:</u>						
Unclaimed Property Act 55 (1ES) of '03				\$10,552,944.77		

	<u>October 2012</u>	<u>October 2011</u>	<u>Percent Increase/ (Decrease)</u>	<u>Four Months 2012-2013</u>	<u>Four Months 2011-2012</u>	<u>Percent Increase/ (Decrease)</u>
<u>State Highway & Transportation Dept.:</u>						
Motor Carrier Fees	\$22,266.53	\$32,896.34	-32.3%	\$106,034.22	\$115,711.56	-8.4%
Registration of Insurance Fee						
Large Truck Speeding Fine	\$18,991.38	\$11,331.60	67.6%	\$59,993.61	\$44,340.75	35.3%
<u>State Securities Dept.:</u>						
Securities Fees	\$348,195.50	\$467,365.84	-25.5%	\$2,402,037.21	\$1,360,350.44	76.6%
<u>Commissioner of State Lands:</u>						
Mineral Royalties & Leases	(\$130,614.98)	\$67,336.20	-294.0%	\$103,821.61	\$326,949.20	-68.2%
<u>Health Department:</u>						
Pet Store Registration Fee		\$200.00	-100.0%		\$450.00	-100.0%
<u>State Treasurer:</u>						
Bail Bondsman				\$144,202.04	\$160,265.12	-10.0%
College Saving Bond						
Surplus Campaign Funds						
Miscellaneous Reimbursement						
<u>Attorney General:</u>						
Professional Fund Raiser Fee	\$7,070.00	\$5,120.00	38.1%	\$21,500.00	\$20,370.00	5.5%
Undistributed Back Pay						
Long-Term Care Act 1292 of 1993						
Arkansas Medicaid Program Trust Act 1621						
<u>Department of Finance & Administration:</u>						
Severed Resources Fees						
Temporary Buyers Tag Fees	\$35,013.32	\$19,967.78	75.3%	\$122,657.28	\$86,966.77	41.0%
Multi-Tax Holding Account	(\$4,622.97)	(\$61,344.11)	-92.5%	(\$4,684.61)	\$30,963.14	-115.1%
<u>Ethics Commission:</u>						
Late Filing Fees						
<u>TOTAL GENERAL REVENUES</u>	<u>\$443,258,663.32</u>	<u>\$458,324,821.07</u>	<u>-3.3%</u>	<u>\$1,886,077,187.29</u>	<u>\$1,845,054,792.07</u>	<u>2.2%</u>

	<u>October 2012</u>	<u>October 2011</u>	<u>Percent Increase/ (Decrease)</u>	<u>Four Months 2012-2013</u>	<u>Four Months 2011-2012</u>	<u>Percent Increase/ (Decrease)</u>
<u>SPECIAL REVENUES COLLECTED BY THE REVENUE DIVISION BY BENEFITING FUND OR ACCOUNT:</u>						
<u>State Central Services:</u>						
Driver's License Vision Test	\$146,389.04	\$139,110.43	5.2%	\$616,922.02	\$602,376.21	2.4%
Gross Receipts Tax Permit	36,204.08	34,145.83	6.0%	134,467.95	129,055.00	4.2%
Liability Insurance Reinstatement Fee	1,580.00	508.75	210.6%	3,260.00	1,521.75	114.2%
Special License Plate Fee	187,232.44	169,252.36	10.6%	790,270.44	776,196.98	1.8%
Special Drivers License-Act 311 of '73	78,530.29	68,907.67	14.0%	298,871.69	301,180.67	-0.8%
Validation Decal Fee-Act 974 of '97	218,353.53	211,041.45	3.5%	911,646.52	954,529.94	-4.5%
DWI Reinstatement Fee Act 802 of '95	57,865.50	53,113.50	8.9%	213,741.00	217,068.74	-1.5%
Additional Severance Tax - Coal	787.20	424.00	85.7%	2361.07	2057.36	14.8%
Rental Car Search Act 1359 of '99		28.00	-100.0%	2.00	324.00	-99.4%
Driver Confirmation Act 1810 of '01						
Total State Central Services	<u>\$726,942.08</u>	<u>\$676,531.99</u>	<u>7.5%</u>	<u>\$2,971,542.69</u>	<u>\$2,984,310.65</u>	<u>-0.4%</u>
<u>Highway and Transportation Department:</u>						
Motor Vehicle Trip Permits	\$15,444.00	\$32,769.00	-52.9%	\$135,320.00	\$154,869.00	-12.6%
Motor Vehicle Licenses	8,535,272.34	8,018,618.81	6.4%	37,732,805.75	37,825,090.31	-0.2%
Motor Fuels Tax	31,379,775.57	32,933,699.60	-4.7%	131,351,125.63	134,544,244.88	-2.4%
Motor Fuels Tax-Act 437 of '79	1,602,093.36	1,693,231.14	-5.4%	6,706,170.63	6,900,771.97	-2.8%
Motor Fuels Tax Increase of '73	1,602,093.36	1,693,231.14	-5.4%	6,706,170.63	6,900,771.97	-2.8%
Motor Fuel Interstate Users	1,399,513.97	1,189,398.75	17.7%	4,225,463.50	3,897,057.45	8.4%
Cotton Trailer Registration Permit	10,044.00	16,144.00	-37.8%	62,281.00	58,828.00	5.9%
Title Transfers-Act 439 of '79						
Driver Search Fees-Act 1067 of '79	672,605.11	670,493.02	0.3%	\$2,550,955.33	\$1,900,742.43	34.2%
Unified Carrier Fees-Act 232 of '07	228.00			\$18,558.00	\$17,932.00	3.5%
Natural Gas Severance	3,759,722.44	5,080,798.27	-26.0%	\$11,707,215.23	\$20,072,199.56	-41.7%
Total Highway Department	<u>\$48,976,792.15</u>	<u>\$51,328,383.73</u>	<u>-4.6%</u>	<u>\$201,196,065.70</u>	<u>\$212,272,507.57</u>	<u>-5.2%</u>
<u>State Police:</u>						
Intransit Fees	\$12.00	\$9.00	33.3%	\$48.00	\$48.00	
Commercial Drivers Lic. Test	52,325.00	48,480.65	7.9%	219,548.99	219,811.73	-0.1%
Liablity Insurance Fine	150.00	200.00	-25.0%	\$1,000.00	\$1,100.00	-9.1%
Driver's License Inc. Act 1500/2001	301,368.66	233,519.03	29.1%	1,119,892.76	1,002,578.30	11.7%
Drive Out Licenses	826.00	792.00	4.3%	3,452.00	3,844.00	-10.2%
Driver Test Fee	53,877.78	47,410.00	13.6%	227,160.17	217,655.00	4.4%
DWI Reinstate./Duplicate Act 1001/2003	459,145.28	409,357.67	12.2%	1,659,236.34	1,690,053.97	-1.8%
VIN Inspection Fee Act 1329/2003	950.00	850.00	11.8%	5,075.00	3,200.00	58.6%
Total State Police	<u>\$868,654.72</u>	<u>\$740,618.35</u>	<u>17.3%</u>	<u>\$3,235,413.26</u>	<u>\$3,138,291.00</u>	<u>3.1%</u>
<u>Miscellaneous Agencies:</u>						

	October 2012	October 2011	Percent Increase/ (Decrease)	Four Months 2012-2013	Four Months 2011-2012	Percent Increase/ (Decrease)
Prostate Cancer Foundation-Add.Tobacco Tax	\$10,645.35	\$12,045.91	-11.6%	\$44,910.91	\$46,881.74	-4.2%
<u>Forestry Commission:</u>						
Timber Severance	\$323,786.48	\$297,798.92	8.7%	\$1,210,459.91	\$1,180,018.95	2.6%
<u>Boating Safety:</u>						
Motor Boat Registration	\$37,463.40	\$51,365.50	-27.1%	\$311,772.10	\$381,450.60	-18.3%
<u>County Aid:</u>						
Severance Tax - 1/4	\$596,943.16	\$456,382.78	30.8%	\$2,663,174.98	\$1,759,136.10	51.4%
Real Estate Transfer - Act 754 of '83	\$85,722.12	\$63,692.40	34.6%	\$248,028.46	\$202,711.92	22.4%
Add. Severance Tax - Act 761 of '83	\$80,401.39	\$97,538.66	-17.6%	\$298,767.57	\$269,160.79	11.0%
<u>Aeronautics Department:</u>						
Aviation Sales Tax	\$32,417.28	\$4,602.36	604.4%	\$39,778.77	\$14,165.50	180.8%
Aviation Use Tax	\$780,966.45	\$474,596.22	64.6%	\$3,121,456.64	\$2,792,573.13	11.8%
<u>Mid-South Community College-Nursing Program:</u>						
Dog Racing - 15 Additional Days	\$3,806.73			\$5,438.42	\$618.07	779.9%
<u>Racing Commission:</u>						
Electronic Gaming Application Fees	\$15,350.00	\$7,200.00	113.2%	\$26,250.00	\$17,950.00	46.2%
<u>Soybean Board:</u>						
Soybean Tax - State	\$479,637.00	\$191,661.83	150.3%	\$608,315.26	\$238,572.39	155.0%
Soybean Tax - National		\$191,661.80	-100.0%		\$238,572.26	-100.0%
<u>Oil Museum:</u>						
Severance Tax - Oil & Brine	\$6,239.62	\$9,545.08	-34.6%	\$32,284.35	\$28,428.64	13.6%
<u>Clerks Continuing Education:</u>						
Real Estate Transf. - Act 754 of '83				\$90,000.00	\$90,000.00	
<u>Oil & Gas Commission:</u>						
Additional Severance Tax - Brine	\$7,775.16	\$15,743.29	-50.6%	\$42,738.51	\$41,255.71	3.6%
<u>Ark. Beef Council:</u>						
Beef Council - State	\$31,514.50	\$48,365.25	-34.8%	\$172,223.93	\$166,621.34	3.4%
Beef Council - National		\$48,365.25	-100.0%		\$166,621.33	-100.0%
<u>Wheat Board:</u>						
Wheat Tax	\$2,168.34	\$3,668.47	-40.9%	\$164,898.32	\$286,787.42	-42.5%
<u>Rice Board:</u>						

	October 2012	October 2011	Percent Increase/ (Decrease)	Four Months 2012-2013	Four Months 2011-2012	Percent Increase/ (Decrease)
Rice Tax	\$1,123,978.60	\$1,067,862.83	5.3%	\$2,140,142.45	\$1,658,029.21	29.1%
<u>Ark. Natural & Cultural Resources</u>						
<u>Grant & Trust:</u>						
Add'l Real Estate Transfer - 80%	\$1,371,578.48	\$1,019,096.79	34.6%	\$5,408,552.73	\$4,683,474.40	15.5%
<u>Parks & Tourism:</u>						
Add'l Real Estate Transfer - 10%	\$171,447.17	\$127,386.93	34.6%	\$676,068.56	\$585,433.74	15.5%
<u>Natural & Cultural Resources Historic</u>						
<u>Preservation:</u>						
Add'l Real Estate Transfer - 10%	\$171,447.17	\$127,386.93	34.6%	\$676,068.56	\$585,433.74	15.5%
<u>Public Health:</u>						
DWI Reinstatement Fee 802/95	\$12,274.50	\$11,266.50	8.9%	\$45,339.00	\$46,044.88	-1.5%
DWI Fees 918/83						
DUI Reinstatement Fee 863/93	\$1,200.00	\$910.00	31.9%	\$4,330.00	\$3,930.00	10.2%
Additional Court Cost						
Amusement Machines	\$8,915.00	\$5,475.00	62.8%	\$16,095.00	\$17,810.00	-9.6%
Choose Life License Plate Fee 344/03						
<u>Disease & Pest Control:</u>						
Livestock & Poultry Vacc. Fee	\$41,097.00	\$56,304.00	-27.0%	\$257,812.62	\$219,200.10	17.6%
<u>Petroleum Storage Tank:</u>						
Environmental Assurance Fee	\$388,907.88	\$634,385.72	-38.7%	\$2,349,778.86	\$2,500,679.66	-6.0%
<u>Commercial Drivers License:</u>						
Driver's Search Fee	\$153,674.89	\$156,844.98	-2.0%	\$585,570.67	\$445,392.57	31.5%
Commerical Drivers License Fee	\$63,497.97	\$59,730.52	6.3%	\$244,134.45	\$255,693.15	-4.5%
<u>Waste Tire Grant:</u>						
Waste Tire Fee Act 749 of '91	\$346,004.12	\$378,088.01	-8.5%	\$1,474,005.05	\$1,524,946.90	-3.3%
District Waste Tire Fee	\$56,962.84	\$61,126.80	-6.8%	\$238,441.31	\$242,158.75	-1.5%
<u>Department of Environmental Quality Fee:</u>						
Waste Tire Fee 8%	\$30,054.05	\$32,877.22	-8.6%	\$128,009.51	\$132,599.54	-3.5%
<u>Swine Testing:</u>						
Swine Testing Fee	\$7.00	\$45.00	-84.4%	\$9.00	\$92.00	-90.2%
<u>Telecommunication Equipment:</u>						
Local Exchange Carrier Surcharge	\$21,874.89	\$21,048.69	3.9%	\$86,808.99	\$94,682.80	-8.3%

	<u>October 2012</u>	<u>October 2011</u>	<u>Percent Increase/ (Decrease)</u>	<u>Four Months 2012-2013</u>	<u>Four Months 2011-2012</u>	<u>Percent Increase/ (Decrease)</u>
<u>Conservation Tax:</u>						
Sales & Use Tax - 1/8 cent	\$5,214,304.89	\$5,247,281.73	-0.6%	\$21,323,974.95	\$21,356,085.29	-0.2%
<u>Arkansas Corn and Grain Promotion:</u>						
Corn & Grain Assessment	\$262,250.42	\$241,167.18	8.7%	\$686,405.59	\$362,017.65	89.6%
<u>Catfish Promotion Board:</u>						
Catfish Feed Assessment	\$4,598.23	\$6,196.96	-25.8%	\$20,896.34	\$25,641.84	-18.5%
<u>Game Protection:</u>						
Fines & Interest	\$88,381.30	\$87,134.10	1.4%	\$370,416.60	\$414,773.40	-10.7%
<u>Public School:</u>						
Amusement Machines					\$30,000.00	-100.0%
<u>Breast Cancer Research (UAMS):</u>						
Additional Tobacco Tax	\$75,473.51	\$85,175.52	-11.4%	\$318,053.80	\$329,447.54	-3.5%
Breast Cancer/Komen License Plate	\$20,131.95	\$15,687.35	28.3%	\$69,090.19	\$66,290.74	4.2%
<u>Breast Cancer Control (Health Dept.):</u>						
Additional Tobacco Tax	\$270,013.94	\$304,623.85	-11.4%	\$1,137,795.28	\$1,177,393.06	-3.4%
<u>Aging and Adult Services(Meals on Wheels):</u>						
Additional Tobacco Tax	\$196,567.84	\$210,723.25	-6.7%	\$817,356.76	\$704,122.20	16.1%
<u>UAMS</u>						
Additional Tobacco Tax	\$33,339.58	\$37,579.26	-11.3%	\$140,443.67	\$145,028.73	-3.2%
<u>Property Tax Relief - Amendment 79:</u>						
Sales & Use Tax - 1/2 cent	\$18,979,243.63	\$19,218,345.11	-1.2%	\$78,336,554.85	\$78,996,604.27	-0.8%
Dyed Diesel Tax - 87/07	\$81,915.06	\$106,927.99	-23.4%	\$483,746.99	\$538,353.57	-10.1%
<u>Weatherization Assistance :</u>						
Utility Assessment		\$13,111.00	-100.0%		\$51,034.50	-100.0%
<u>Educational Adequacy:</u>						
Sales & Use Tax - 7/8 cent	\$33,253,725.13	\$33,630,184.41	-1.1%	\$137,630,965.48	\$138,448,034.87	-0.6%
Dyed Diesel Tax - 87/07	\$143,592.29	\$187,438.38	-23.4%	\$847,980.24	\$943,701.82	-10.1%
<u>Fallen Firefighter's Memorial:</u>						
Special License Plate Fee - 28/05						
<u>In God We Trust:</u>						

	October 2012	October 2011	Percent Increase/ (Decrease)	Four Months 2012-2013	Four Months 2011-2012	Percent Increase/ (Decrease)
Special License Plate Fee - 727/05	\$6,400.00	\$6,257.97	2.3%	\$30,730.99	\$30,664.98	0.2%
<u>TOTAL SPECIAL REVENUES COLLECTED</u>	<u>\$115,660,085.26</u>	<u>\$117,877,437.77</u>	<u>-1.9%</u>	<u>\$473,029,098.27</u>	<u>\$482,931,431.01</u>	<u>-2.1%</u>
<u>Ad Valorem Tax Trust:</u>						
Private Car Bus & Truck	\$4,463,207.62	\$4,071,828.96	9.6%	\$5,811,743.19	\$5,817,074.76	-0.1%
<u>AR Medicaid Program Trust:</u>						
Soft Drink Tax	\$3,980,582.67	\$4,194,164.98	-5.1%	\$16,000,960.28	\$16,716,963.11	-4.3%
<u>U.S. Olympic Committee Program Trust:</u>						
Income Tax Check Off Contribution/Gift						
<u>AR Disaster Relief Program Trust:</u>						
Grant/Gift/Donation						
<u>AR School For The Deaf Fund:</u>						
Income Tax Check Off Contribution						
<u>AR School For The Blind Fund:</u>						
Income Tax Check Off Contribution						