



**Arkansas Department of Correction**

**SEX OFFENDER SCREENING  
& RISK ASSESSMENT**

P.O. BOX 6209

PINE BLUFF, AR 71611

PHONE: (870) 850-8429

FAX#: (870) 850-8446

E-MAIL: Sheri.Flynn@Arkansas.gov

July 3, 2013

Governor Mike Beebe  
Arkansas State Capitol  
Little Rock, AR 72201

Senator Mary Anne Salmon  
Chair, Arkansas Legislative Council  
Arkansas State Capitol  
Little Rock, AR 72201

Representative Tommy Lee Baker  
Chair, Arkansas Legislative Council  
Arkansas State Capitol  
Little Rock, AR 72201

Dear Governor Beebe and Chairpersons:

Pursuant to state law, the Sex Offender Assessment Committee is to report to the Governor and Legislative Council each year a summary of the proceedings of the committee, a statement of revenue, expenditures and any additional requested information. I am enclosing a report on the Sex Offender Screening & Risk Assessment Program for the fiscal year that ended on June 30, 2013. The committee has no revenue and their expenses are covered by the Arkansas Department of Correction.

Please feel free to contact Deputy Director Wendy Kelley or I, should you have any questions or concerns about the report.

Sincerely,

Sheri J. Flynn, MS, LSW  
SOSRA Administrator

Cc: Deputy Director Wendy Kelley  
Legislative Council

Enclosure

# ARKANSAS DEPARTMENT OF CORRECTION



**Arkansas Department of Correction**

## Sex Offender Screening & Risk Assessment

---

**Legislative Update FY 2013**

**Wendy L. Kelley, Deputy Director & Sheri J Flynn, MS, LSW, SOSRA Administrator**

**7/3/2013**

The Sex Offender Screening & Risk Assessment Program (SOSRA), under the auspices of the Arkansas Department of Correction has been conducting individualized community notification assessments since September 1999. SOSRA came into existence, in part because of the need for consistency in the assessment process and because local law enforcement agencies did not have the time, resources or expertise to conduct individualized assessments. SOSRA continues to monitor and make changes in the process to comply with changes made by the General Assembly, to reduce the length of time for assessments, and refine the individualized assessment process.

## SOSRA & SEX OFFENDER MANAGEMENT

SOSRA began conducting assessments in the fall of 1999. As of June 30, 2013, the program has conducted 11,528 assessments. Arkansas is committed to conducting an individualized community notification assessment will provide local law enforcement agencies with accurate information to help community members protect themselves from future victimization. Ongoing research indicates individualized assessment is the appropriate mechanism for community notification and it assists others working in the field of sex offender management.

Arkansas continues to build a network of professionals who believe in the “containment” approach to sex offender management. The containment approach places a sex offender at the center of a system of professionals providing assessment, supervision and treatment of sex offenders. The idea is to *contain* the sex offender inside the network of professionals and closely monitor the offender’s behavior. SOSRA works tirelessly to train and share information with local law enforcement agencies, prosecutors, judges, probation/parole officers, the Arkansas Parole Board, the Department of Human Services, treatment providers and other entities responsible for the management of sex offenders. SOSRA works daily to build positive working relationships with all entities working in the sex offender management field.

Assessment information is intended to help local law enforcement agencies determine the appropriate level of community notification; however, a number of other agencies use the information in making decisions regarding offenders. The Department of Community Correction assigns Level 3 and 4 sex offenders to an intensive after care program, and restricts where these offenders can live and work. State law also places restrictions on Level 3 and 4 sex offenders. The Arkansas Parole Board uses the

information when making parole decisions and treatment recommendations. The Reduction of Sexual Victimization Program (RSVP) and Sex Offender Female Treatment (SOFT), treatment programs within the Arkansas Department of Correction, and private treatment providers use assessment information in treatment of sex offenders. Local law enforcement agencies and prosecutors may use the information to help identify suspects when new sex crimes are reported and in making sentencing recommendations. Judges use the information to assign community notification in certain cases. Federal probation officers use the information to manage sex offenders. The Department of Human Services and Arkansas State Police can use the information in child maltreatment investigations and child custody decisions.

Successful sex offender management requires that each entity involved have access to the same information and maintain open communication with one another. Since 1999, SOSRA has maintained a commitment to a team approach to sex offender management. SOSRA was involved in the development of an electronic sex offender management system (eSOMA) that provides immediate access to a wealth of information on sex offenders to law enforcement agencies using eSOMA. Officers may use the system to access other criminal history information on any sex offender ever incarcerated in the Arkansas Department of Correction or supervised by the Department of Community Correction. SOSRA continues to encourage sex offender management partners to use this system to instantly access the information on sex offenders assessed by SOSRA. The flow of information between SOSRA, DCC, local law enforcement, federal probation, US Marshall's Service and other sex offender management entities continues to grow.

The Arkansas Crime Information Center (ACIC) developed an electronic registration system, CENSOR. CENSOR and eSOMA now share information electronically in an effort to ensure that ACIC and SOSRA receive registration and assessment information, as quickly as possible.

## TIME FRAMES FOR ASSESSMENT

SOSRA made a number of changes to expedite the assessment process without sacrificing the integrity of the information provided to local law enforcement. Changes resulted in a decrease in the amount of time it takes to complete each assessment. The average amount of time per assessment in 2010 was 8.8 months. The average amount of time per assessment in 2012 was 4.7 months. The average amount of time per assessment was 4.5 months in 2013. SOSRA is constantly exploring the most efficient manner in which to conduct assessments, while maintaining the integrity of the assessment process.

## Assessments Per Calendar Year

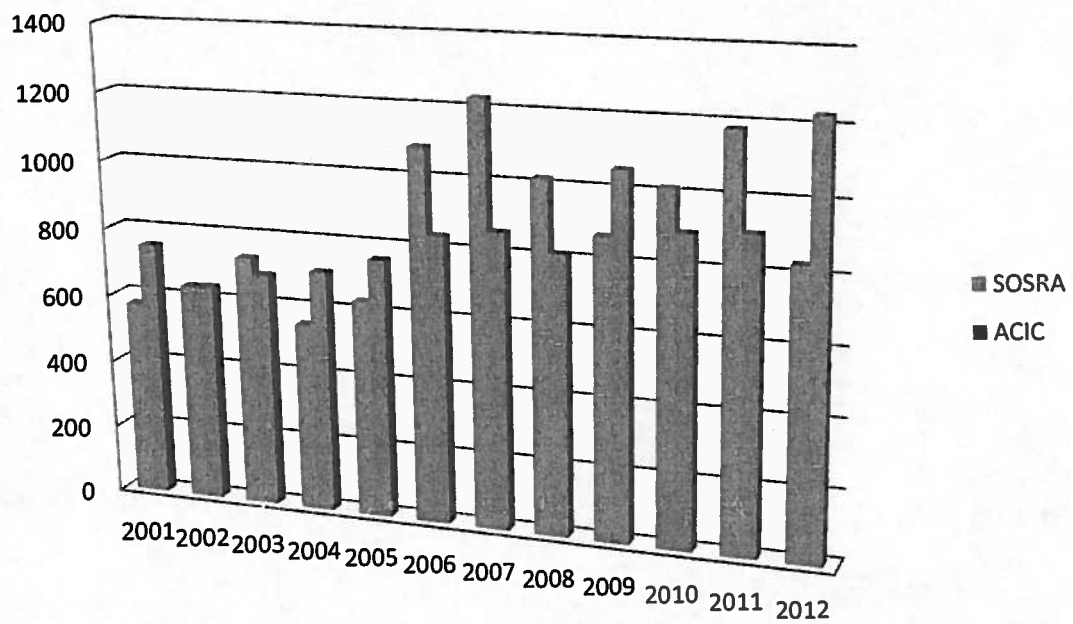
Below is the number of assessments completed by SOSRA per *calendar year* versus the number of newly registered sex offenders documented by the Arkansas Crime Information Center (ACIC). \*

CY	2001	2002	2003	2004	2005	2006	2007	2008	2009	2010	2011	2012
SOSRA	572	637	734	551	633	1087	1231	1020	873	1016	1184	838
ACIC	751	639	687	709	758	839	862	814	1058	897	907	1231

---

\* ADC began to register sex offenders as they entered ADC, in order to accurately reflect the location of all offenders increasing the number of offenders registered; however, there is no backlog of offenders as the inmates are being assessed prior to release.

## Assessments vs. New Registrants



## Community vs. ADC Assessments Per Fiscal Year

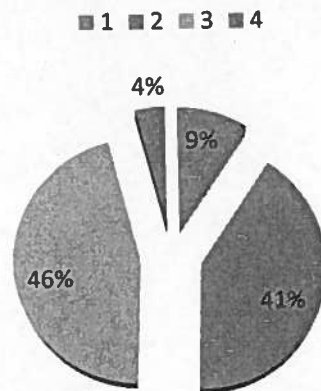
SOSRA must balance the number of assessments conducted on sex offenders currently living within communities, with the number of inmates about to be released from prison. SOSRA has made huge strides in making certain that inmates are assessed before the Board of Parole considers them for release to the community or they complete their sentence. The information listed below reflects the number assessments completed each *fiscal* year and how many of those were inmate assessments. SOSRA continues to keep up with newly registered sex offender assessments and it is rare for an offender to be released from ADC without having been assessed.

Fiscal Year	Total Assess.	ADC Assess.
FY 06	770	363
FY 07	1440	335
FY08	1002	429
FY09	862	234
FY10	962	439
FY 11	1235	459
FY 12	979	440
FY 13	833	410

## Community Notifications Levels:

Below is a graph indicating the Community Notification Levels assigned by SOSRA through 2012. Please keep in mind that the number of Default Level 3's is included in the total number of Level 3's.

## CN Levels 1999-2012



## Contact Information

Further information is available from:

Sheri Flynn, MS, LSW  
SOSRA Administrator  
Phone: 870-850-8433  
Email: [sheri.flynn@arkansas.gov](mailto:sheri.flynn@arkansas.gov)

Wendy L. Kelley, JD  
Deputy Director  
Phone: 870-267-6360  
Cell: 870-550-7307  
Email: [wendy.kelley@arkansas.gov](mailto:wendy.kelley@arkansas.gov)