

Arkansas Insurance Department

2013 Annual Report



**1200 West Third Street
Little Rock, AR 72201-1904
1-501-371-2600, 1-800-282-9134
www.insurance.arkansas.gov**



The Honorable Mike Beebe, Governor of Arkansas

I am pleased to present to you the 2013 Annual Report of the Arkansas Insurance Department. This report is established by the provisions of Arkansas Code Ann. § 23-61-112 and summarizes the activities of the Arkansas Insurance Department for the calendar year ending December 31, 2013.

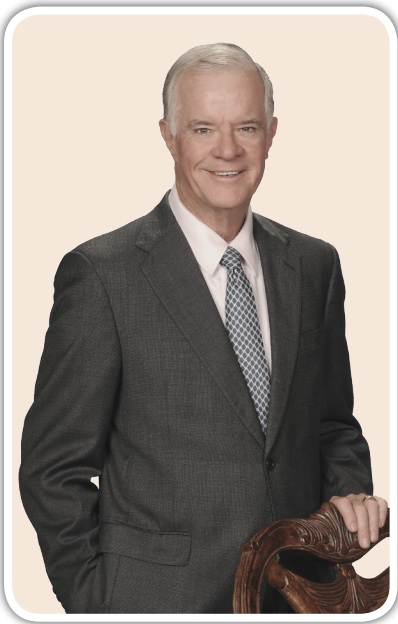
In addition to the required financial disclosures and listing of companies operating in Arkansas, this report highlights the work of the Arkansas Insurance Department on behalf of Arkansas insurance consumers.

Sincerely,


Jay Bradford
State Insurance Commissioner

Table of Contents

A Message from the Commissioner	1
History of Insurance Commissioners	2
AID Leadership Team	5
AID Divisions and Programs	6
AID Receipts, Revenue Distribution and Expenditures	9
AID Services:	
Consumer Complaints and Inquiries	10
Consumer Recoveries	10
Medicare Recipients Served	10
Producers & Business Entities (Agents and Agencies)	11
New Company Admissions	11
Total Licensed Companies	11
AID Examinations:	
Financial Examinations	12
Financial Analysis	12
Prepaid Funeral Benefits Contracts	12
Insurance Fraud Investigations	12
Legal Proceedings	12
Liquidations and Rehabilitations	12
Insurers Listed by Arkansas Premium as of 12/31/2011	
Domestic Surplus Lines	13
Farmers Mutual Aid Associations	13
Fraternal Organizations	13
HMO and HMDI Companies	13
Life and Health Companies	14
Property and Casualty Companies	22
Title Companies	34



A Message From the Commissioner

I continue to enjoy a great deal of satisfaction in serving as your Arkansas Insurance Commissioner. The Arkansas Insurance Department is first and foremost a service oriented agency. Our mission is to protect Arkansas consumers by making sure insurers are solvent and can pay their claims; to make sure the market is operated in a fair and lawful way; and to be vigilant in detecting and prosecuting fraud.

Just in this past year we have seen more than 210,000 Arkansans in the marketplace receive health insurance coverage via premium assistance through tax credits or through the Private Option Medicaid program where premiums are supplemented utilizing federal funds. This population is largely made up of young, working Arkansans with families. This increase in those now having coverage has been a boost to Arkansas's hospitals and other medical providers. In 2010, it was estimated that Arkansas hospitals had \$330 million in uncompensated care. Preliminary data shows a significant reduction in that number.

The Arkansas Insurance Department collects and distributes a large amount of funds from various sources, including licenses, permits, and fees. In 2013, more than \$104 million dollars was directed to General Revenue while more than \$52 million went to police and firemen pension funds. The Department's operating budget is \$12.4 million.

I hope upon review of the information contained in this report, you will agree that our employees do a good job of regulating and overseeing the business of insurance here in Arkansas. In 2013 we were successful in recovering \$3.5 million for Arkansas consumers. This continued success would not be possible without the hard work of many dedicated employees who care very much about the citizens of our state.

Mission Statement

The purpose of the State Insurance Department is to serve and protect the public interest by the equitable enforcement of the state's laws and regulations affecting the insurance industry.

The primary mission of the State Insurance Department shall be consumer protection through insurer solvency and market conduct regulation, and fraud prosecution and deterrence.



History of Insurance Commissioners

AUDITORS OF STATE

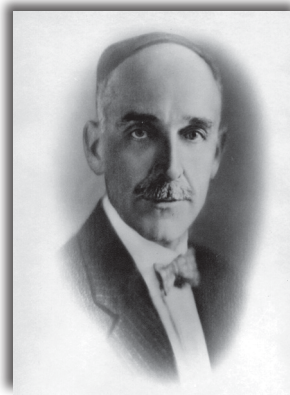
The work of the Insurance Department was formerly placed by law in the office of the Auditor of State. The "Insurance Bureau" was established in the Auditor's office by the Act of April 25, 1873, the Auditor being charged by same with the execution of the laws of the state relating to insurance.

The General Assembly of 1917, by Act No. 190, approved March 7, 1917, on account of the greatly increased volume of work required to be done by the insurance department, separated same from the office of the Auditor of State and created the State Insurance Department. The head of the Insurance Department shall be an Insurance Commissioner appointed by the Governor with the advice and consent of the Senate. The Insurance Commissioner shall enforce the provisions of the Arkansas Insurance Code and shall execute the duties imposed upon him or her by the Arkansas Insurance Code.

Ex-officio Commissioners of Insurance

1873 - 1874	Stephen Wheeler	
1874 - 1877	W. R. Miller	
1877 - 1882	John Crawford	
1883 - 1886	A. W. Files	(Died in office. W. R. Miller was appointed to fulfill the unexpired term.)
1887 - 1892	W. S. Dunlap	
1893 - 1896	C. B. Miles	
1897 - 1900	Clay Sloan	
1901 - 1904	T. C. Monroe	
1905 - 1908	A. E. Moore	
1909 - 1912	John R. Jobe	
1912 - 1913	John N. Oathout	(Elected Auditor September 1912, died June 20, 1913. L. Coffman appointed June 23, 1913.)
1913 - 1914	L. L. Coffman	(Resigned March 4, 1914. M. F. Dickinson was appointed to fulfill the unexpired term.)
1915 - 1916	M. F. Dickinson	

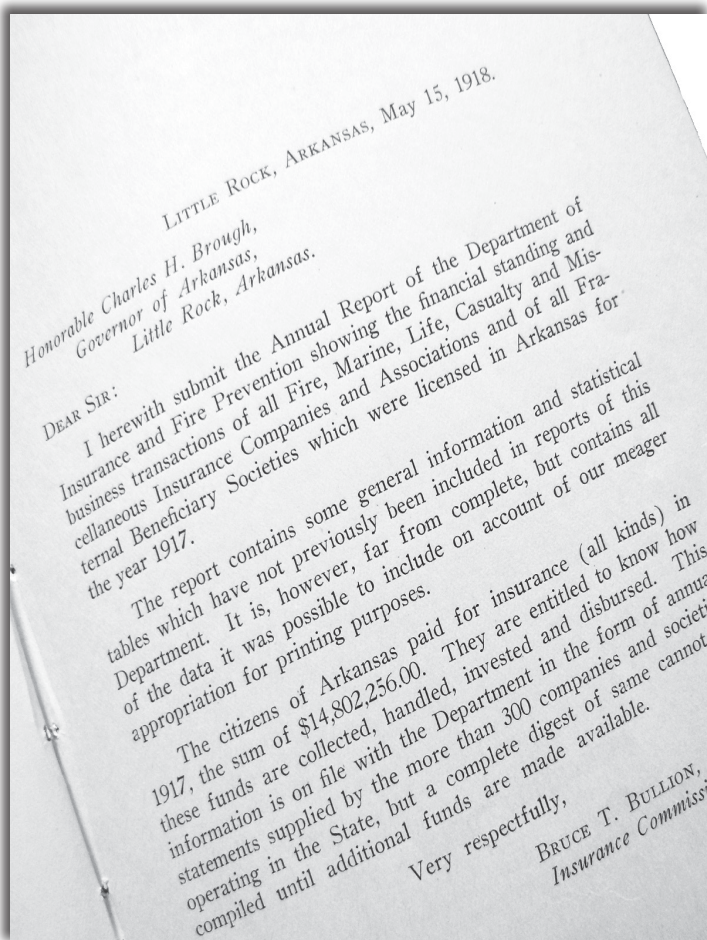
INSURANCE COMMISSIONERS



1917-1924
Bruce T. Bullion



1924-1925/1937-1941
M. J. Harrison





1925-1927/1929-1931
W. E. Floyd



1927-1929
J. S. Maloney



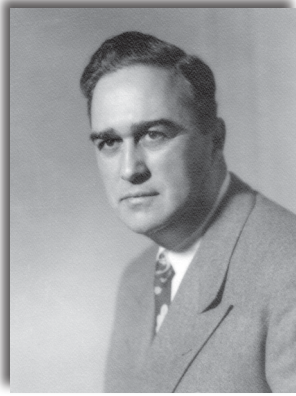
1931-1933
A. D. Dulaney



1933-1937
U. A. Gentry



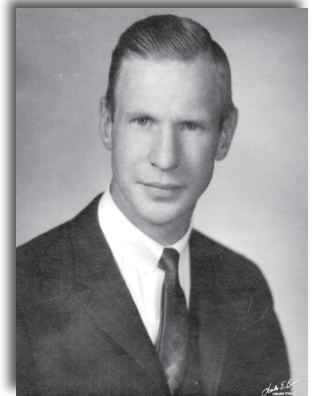
1941-1945/1949-1953
J. Herbert Graves



1945-1949
Jack McKenzie



1953-1967
Harvey G. Combs



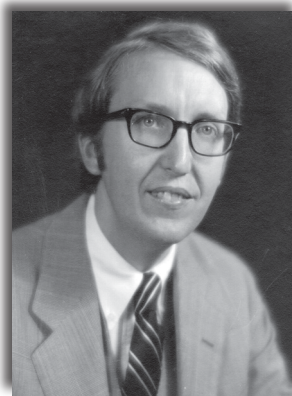
1967-1968
John Norman Harkey



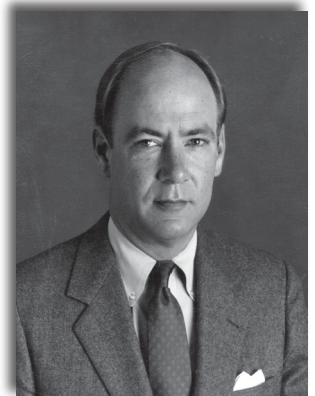
1968-1970
Allen W. Horne



1970-1972
A. Gene Sykes



1972-1976
Ark Monroe, III



1976-1982
*W. H. L. Woodyard, III



1983-1985
Linda N. Garner



1985-1988
Robert M. Eubanks, III



1988 - 1990
Ron Taylor



1990-1996
*Lee Douglass



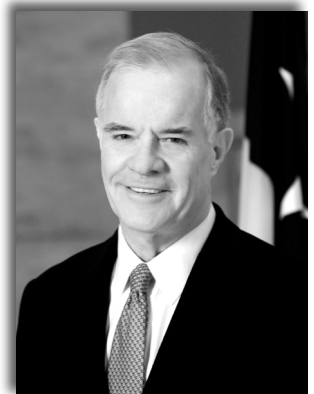
1997-2005
*Mike Pickens



2005-2008
Julie Benafield Bowman



2009
Lenita Blasingame



2009-
Jay Bradford

***President of the National Association of Insurance Commissioners (NAIC)**

The Arkansas Insurance Department is accredited by the NAIC. To achieve this accreditation, the Department must meet stringent national standards that demonstrate it effectively regulates insurance companies for solvency. The Arkansas Insurance Department views accreditation by the NAIC as an important part of our commitment to the citizens of Arkansas. Accreditation standards enable us to provide expanded consumer protections and to institute and maintain the highest standards in financial regulation. NAIC repeats the accreditation review every five years to confirm that the Department continues to meet all requirements. The Department was most recently accredited in March 2011.

AID Leadership Team

ADMINISTRATION

Jay Bradford, State Insurance Commissioner 501-371-2623 Jay.Bradford@arkansas.gov
Lenita Blasingame, Insurance Chief Deputy Commissioner..... 501-371-2824..... Lenita.Blasingame@arkansas.gov
Alice Jones, Communications Director 501-371-2835..... Alice.Jones@arkansas.gov

ACCOUNTING

Pam Looney, Insurance Assistant Deputy Commissioner 501-371-2605..... Pam.Looney@arkansas.gov

ARKANSAS HEALTH CONNECTOR

Cynthia Crone, Insurance Deputy Commissioner..... 501-683-3634 Cynthia.Crone@arkansas.gov

COMPLIANCE

Dan Honey, Insurance Deputy Commissioner 501-371-2800 Dan.Honey@arkansas.gov

CONSUMER SERVICES

Jackie Smith, Insurance Consumer Protection Manager 501-371-2640 Jackie.Smith@arkansas.gov

CRIMINAL INVESTIGATION

Greg Sink, Criminal Investigation Division Director 501-371-2790..... Greg.Sink@arkansas.gov

FINANCE

Mel Anderson, Insurance Deputy Commissioner Financial Reg. 501-371-2665..... Mel.Anderson@arkansas.gov

HEALTH INSURANCE PREMIUM RATE REVIEW

Lowell Nicholas, Insurance Deputy Commissioner 501-683-3638 Lowell.Nicholas@arkansas.gov

HUMAN RESOURCES

Andrea May, Personnel Manager..... 501-371-2818 Andrea.May@arkansas.gov

INFORMATION SYSTEMS

Carder Hawkins, Ins. Deputy Commissioner Information Services ... 501-371-2664..... Carder.Hawkins@arkansas.gov

LEGAL

Bill Lacy, Insurance Deputy Commissioner & General Counsel..... 501-371-2820..... Bill.Lacy@arkansas.gov

LICENSE

Fred Stiffler, Insurance Licensing Manager 501-371-2750..... Fred.Stiffler@arkansas.gov

LIQUIDATION

Steve Uhrynowycz, Deputy Receiver 501-371-2776..... Steve.Uhrynowycz@arkansas.gov

PUBLIC EMPLOYEE CLAIMS

Nathan Culp, Insurance Public Employee Claims Director..... 501-371-2700..... Nathan.Culp@arkansas.gov

RISK MANAGEMENT

Drew Carpenter, Director Risk Management 501-371-2690..... Drew.Carpenter@arkansas.gov

SENIOR HEALTH INSURANCE INFORMATION PROGRAM (SHIIP)

Amanda White, SHIIP Manager 501-371-2782..... Amanda.N.White@arkansas.gov

AID Divisions and Programs

ADMINISTRATION

501-371-2622

insurance.administration@arkansas.gov

The Administration Division oversees the overall operations of the AID, establishes Department policy, handles media inquiries, security, and coordinates consumer protection and outreach activities. Each of the divisions works collectively to ensure the Department's mission of consumer protection is fulfilled. This staff of approximately 200 highly skilled and dedicated employees is committed to serving the citizens of Arkansas every day.

ACCOUNTING

501-371-2605

insurance.accounting@arkansas.gov

The Accounting Division collects and oversees fees and premium taxes from all insurance companies conducting business in the State of Arkansas. These fees not only fund the AID (no monies are received from the state's General Revenue Fund), but the taxes are also used to contribute to the state's Police and Firemen Pension Funds and General Revenue. The division handles all purchasing and accounts payable for AID, as well as the development of biennium budgets.

ARKANSAS HEALTH CONNECTOR

501-683-4170

insurance.exchange@arkansas.gov

The Arkansas Health Connector (AHC) Division was established to manage and implement Arkansas's new Health Insurance Marketplace in accordance with the Patient Protection and Affordable Care Act (PPACA) of 2010. Arkansas chose to implement a State Partnership Marketplace in the initial years. The AHC Division is responsible for certifying and monitoring health insurance plans sold through the Federally-facilitated Health Insurance Marketplace, ensuring health coverage access, affordability, quality and choice for Arkansans. During the first open enrollment period, the Arkansas Health Connector Resource Center and more than 2,300 Marketplace producers and other assisters, trained and licensed by the AID, worked to provide Marketplace information and enrollment assistance across Arkansas. These assisters helped connect Arkansans with the federal Health Insurance Marketplace and helped them enroll in a plan that best meets their needs and budget. More than 200,000 Arkansans enrolled in Qualified Health Plans during the 2014 open enrollment period which ended March 31, 2014. Many enrollees were eligible for the expanded Medicaid program (Private Option); more than 90% of other enrollees received financial assistance making their coverage more affordable. The open enrollment period for Plan Year 2015 begins November 15, 2014 and continues through February 15, 2015. Arkansas expects consumers to have even more health insurance choices in 2015.

COMPLIANCE

501-371-2800

insurance.LnH@arkansas.gov

insurance.PnC@arkansas.gov

Life & Health (L&H) is responsible for the review and approval of life and health forms, rates and advertising. L&H must approve premiums for individual health policies and must ensure that benefits on health policies provide an acceptable relationship to the premiums charged. L&H reviews contracts for guaranteed interest policies, including life and annuity and variable contracts, equity indexed annuities, funeral insurance, credit life and disability, individual and group health plans, long-term care, Medicare supplements and supplemental benefits contracts, as well as contracts for health maintenance organizations (HMOs).

Property & Casualty (P&C) is responsible for monitoring and regulating rate and form filing activities. All insurance companies transacting business in the State of Arkansas for surety, workers' compensation, and all other property and casualty coverage must submit their forms to P&C for approval. The forms are then reviewed to ensure compliance with state law. For most lines of insurance, Arkansas is considered a "competitive rating state" and, as such, requests for rate changes are effective 20 days after they are filed unless those changes are excessive, inadequate, or unfairly discriminatory.

CONSUMER SERVICES

501-371-2640 or 800-852-5494

insurance.consumers@arkansas.gov

The Consumer Services Division (CSD) assists insurance consumers with complaints and inquiries regarding insurance companies, producers, and adjusters. CSD investigates all complaints, working with the insurance company and the

consumer to determine the appropriate course of action. CSD travels statewide to provide educational information and materials, and in the event of significant storm damage, travels to damaged areas to assist homeowners with filing claims and procuring emergency living expenses.

CRIMINAL INVESTIGATION

501-371-2790 or 866-660-0888

insurance.fraud@arkansas.gov

The Criminal Investigation Division (CID) receives hundreds of referrals of suspected fraud each year. CID investigates and prosecutes all categories of insurance fraud. Investigations that result in a finding of a criminal violation are referred to the appropriate prosecuting attorney's office. In 2013, CID achieved a 100% conviction rate on those cases referred for prosecution.

FINANCE

501-371-2665

insurance.finance@arkansas.gov

The primary goal of the Finance Division is to protect insurance consumers through effective solvency regulation by monitoring the financial condition of all domestic and foreign insurance companies operating in the state; conducting financial and market conduct examinations; reviewing other financial information and reports filed by insurance entities, such as business plans, reinsurance agreements, merger and acquisition documents, company formation documents, market research and feasibility studies; reviews and approves the licensing of insurers, captives, risk retention groups, surplus lines, charitable annuities, continuing care facilities, motor clubs, reinsurance intermediaries, service contract providers, and accredited/trusteed reinsurers; examines prepaid funeral contracts and conducts financial examinations of licensees' trust funds and custodial accounts; and oversees statutory security deposits of insurance companies.

HEALTH INSURANCE PREMIUM RATE REVIEW

501-683-3146

insurance.hirr@arkansas.gov

The Health Insurance Premium Rate Review Division (HIPRR) was created in 2010 to enforce provisions of the Affordable Care Act (ACA), and to implement improvements in Arkansas's rate review processes. On July 1, 2011, the Center for Consumer Information and Insurance Oversight (CCIIO) determined that Arkansas has an effective rate review program after careful review of Arkansas's laws, regulations, and bulletins. HIPRR has endeavored to create a health insurance education, outreach and training unit dedicated to accurate and timely dissemination of information about the health insurance rate approval processes and rate trends to a diverse group of stakeholders including the general public, policy makers, health insurers, health care providers, and the business community.

HUMAN RESOURCES

501-371-2818

insurance.human.resources@arkansas.gov

The Human Resources Division is responsible for the recruiting and hiring process, benefits, compensation and retirement, employee training and development, compliance with employment laws and regulations and personnel budget preparation and management.

INFORMATION SYSTEMS

501-371-2657

insurance.information.systems@arkansas.gov

The Information Systems Division (IS) keeps the Department operating effectively and efficiently in the ever-changing world of technology. This is achieved through the IS strategy of leveraging up-to-date, state of the art software and systems technology to continually increase the productivity of the overall Department. The result is minimal growth in the number of Department staff in the face of continued growth in the size of the regulated industry and revenue.

LEGAL

501-371-2820

insurance.legal@arkansas.gov

The Legal Division represents the Arkansas Insurance Department, participating in numerous investigations, market conduct examinations, drafting legislation, rules, bulletins, directives, legal opinions, and investigating consumer complaints. Division attorneys represent the Commissioner and AID staff in lawsuits or other proceedings, administrative hearings and court appeals pertaining to alleged licensee insurance code or rule violations by a licensee and insurance company acquisitions, mergers, reinsurance agreements and similar transactions. Prior to each Legislative Session, the Division prepares the recommendations of the Commissioner as to amendments or supplementation of laws affecting insurance

and as to matters affecting the Department to be addressed in the next Legislative Session. Legislation passed during the most recent non-budget session can be viewed at www.insurance.arkansas.gov/Legal/Bulletins/15-2013.pdf.

LICENSE

501-371-2750

insurance.license@arkansas.gov

The Licensing Division is responsible for the licensing of resident and nonresident producers, adjusters, title agents, and business entities that are soliciting, selling or negotiating insurance in the State of Arkansas. License oversees the producer examinations and investigates all resident applicants by reviewing Arkansas State Police records. It also ensures that necessary laws are followed regarding license renewals and continuing education.

LIQUIDATION

501-371-2776

insurance.liquidation@arkansas.gov

The Liquidation Division, on behalf of the Insurance Commissioner as Receiver, manages the day to day affairs of insolvent insurance company estates and insolvent prepaid funeral benefit trusts. Although the Liquidation Division performs certain functions on behalf of the Commissioner, individuals employed with this division are not employed by the State of Arkansas and are not considered state employees. Liquidation does not receive any funding from the State of Arkansas. Liquidation administers the Arkansas Life and Health Insurance Guaranty Association (ALHIGA) and the Arkansas Property & Casualty Guaranty Fund (APCGF). During 2013, APCGF paid over \$1,613,254 to adjust, settle or litigate claims and recovered over \$395,562 as a result of nineteen non-domestic and one domestic insurance company receiverships. During 2013, ALHIGA provided benefits to Arkansas insureds and claimants totaling more than \$3,297,915 and recovered over \$4,076,889 as a result of three domestic and nine non-domestic insurance company receiverships.

PUBLIC EMPLOYEE CLAIMS

501-371-2700

insurance.public.employee.claims@arkansas.gov

The Public Employee Claims Division (PECD) is responsible for the investigation and management of more than 3,800 workers' compensation claims filed each year for Arkansas state employees. Workers' compensation coverage is also provided for emergency service volunteers who are accidentally injured while performing services under the call and supervision of the State of Arkansas. PECD encourages state agencies to implement safety programs, hoping to reduce the number of injuries suffered by state employees. PECD personnel give presentations to several audiences each year. The prevention of injuries helps in three areas: 1) improves the quality of life of employees; 2) helps agencies with staffing issues; and 3) reduces workers' compensation costs for the taxpayers of the State of Arkansas.

RISK MANAGEMENT

501-371-2690

insurance.risk.management@arkansas.gov

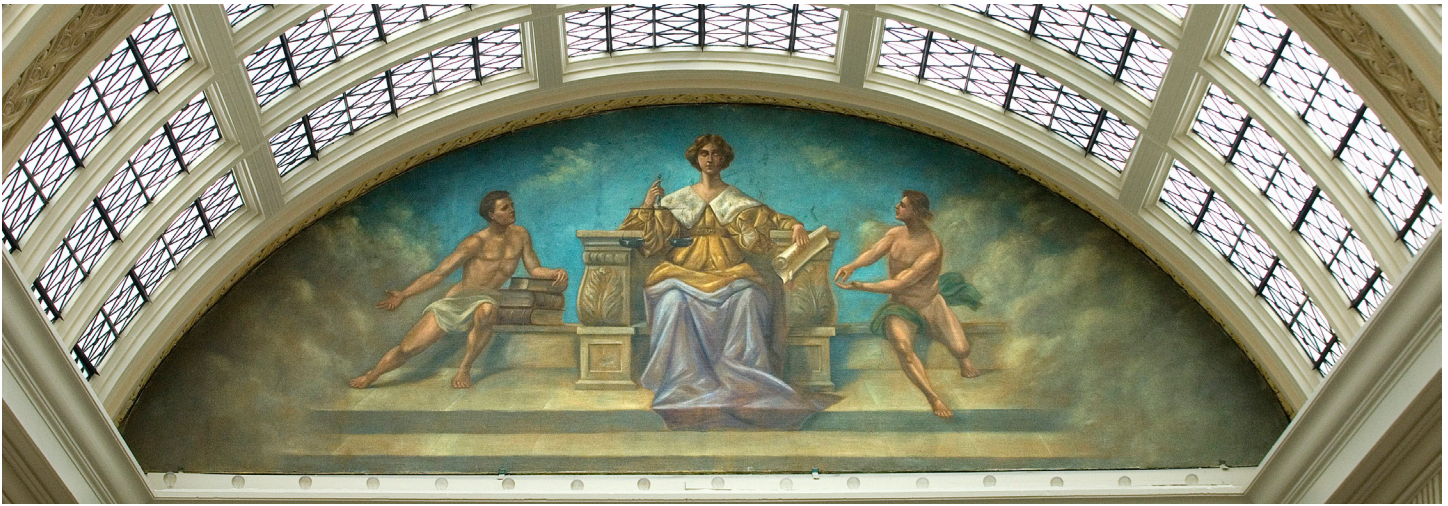
The Risk Management Division (Risk) was established to minimize the cost of insurance and surety bonding to Arkansas state agencies, and to analyze and make recommendations on loss control and safety programs in an effort to protect state assets. In 2004, Risk assumed the responsibility of providing insurance coverage, consulting, and loss control services to public schools that choose to participate in the Public School Property and Vehicle Insurance Trust Fund. Property inspections and appraisals are conducted on approximately 5,500 state owned and leased structures and 2,500 school district structures with insured values of \$13 billion. A vehicle safety program covering 5,500 state agency and 5,000 public school vehicles has been in effect for many years, resulting in improved loss ratios. Risk also offers on-site advanced defensive driver training at no cost to state agencies and participating schools.

SENIOR HEALTH INSURANCE INFORMATION PROGRAM

insurance.SHIIP@arkansas.gov

501-371-2782 or 800-224-6330

The job of the Senior Health Insurance Information Program (SHIIP) is to help Arkansans save money and make informed decisions about Medicare. SHIIP recruits and trains a volunteer network throughout the state to provide in-person information, assistance, and presentations as well as help at community events and health fairs. SHIIP produces Medicare, Medicare Advantage, and Medicare Part D publications for order and distribution via its website. In addition, SHIIP assists with applications for Medicare subsidy programs like Medicare Savings Program and Extra Help enabling recipients to save thousands of dollars annually.



AID Receipts, Revenue Distribution and Expenditures

Fiscal Year 2013 Receipts

Insurance Department Trust Fund.....	\$ 17,537,801.77
Federal Funds	6,956,497.01
Premium & Other Taxes	169,263,632.11
Licenses, Permits and Fees	23,563,219.38
	\$217,321,150.27

Distribution of Revenues

General Revenue	\$104,897,263.30
Police & Firemen Pension Funds	52,961,134.68
Insurance Department Funds:	
Agent License	6,733,916.97
Policy Filing Fees	17,381.00
Copies	2,685.85
Examiner Travel Expense Reimbursement	87,331.29
Governmental Bonding Board Restitution	98,428.76
Continuing Education Fees.....	119,485.00
Pre-Paid Funeral Fees	359,910.00
Workers' Compensation Qualification Fees	8,000.00
AMAIT – State Fleet and Property Insurance	7,640,509.00
Insurance Department Trust Fund Fees	17,537,801.77
Pre-Paid Funeral Fees	17,247.29
Criminal Investigation Assessment.....	688,100.00
Criminal Background Checks – Agents.....	84,204.00
School – Auto/Property Insurance.....	7,035,110.22
Bail Bond Fees	670,980.00
Federal Grant Draws*	6,956,497.01
Fire Protection Revolving Fund.....	11,405,164.13
Total Insurance Department Funds.....	59,462,752.29
	\$217,321,150.27

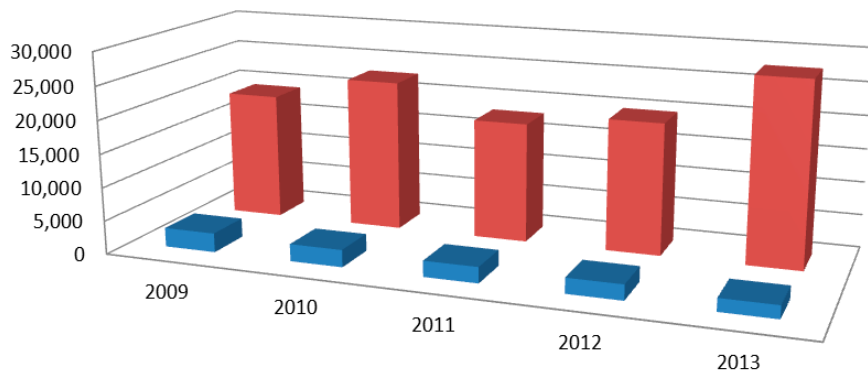
Fiscal Year 2013 Expenditures

Regulatory Services (Insurance Department Budget).....	\$12,429,915.00
--	------------------------

* Arkansas Health Connector, Consumer Assistance Program, Health Insurance Premium Rate Review, Senior Health Insurance Information Program

AID Services

Complaints and Inquiries



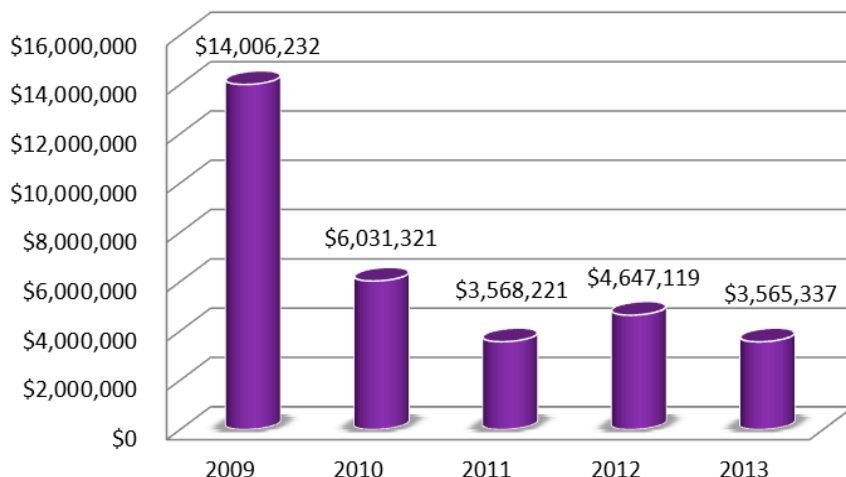
A complaint is a written grievance filed by an insurance consumer or their advocate with our Consumer Services Division (CSD).

Inquiries are informal questions answered by a CSD representative.

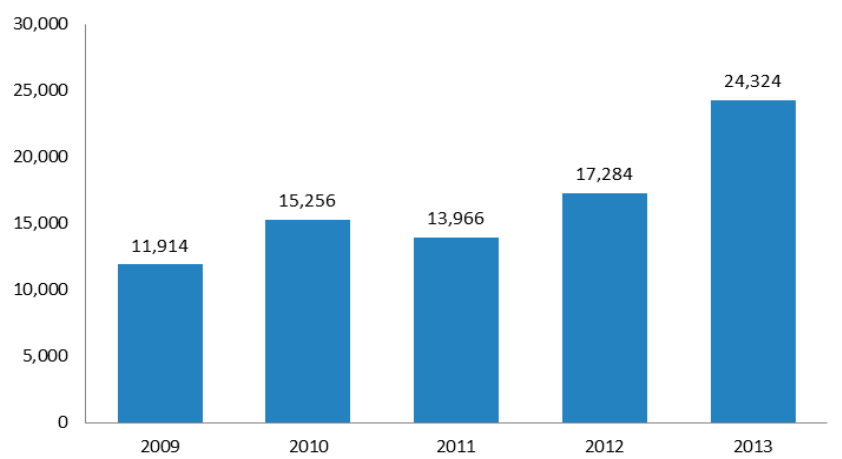
	2009	2010	2011	2012	2013
Complaints	2,864	2,584	2,391	2,308	1,933
Inquiries	19,207	22,810	18,048	19,801	27,646

Recoveries

Recoveries are amounts recovered for consumers by CSD in excess of the amount initially offered by insurance companies.



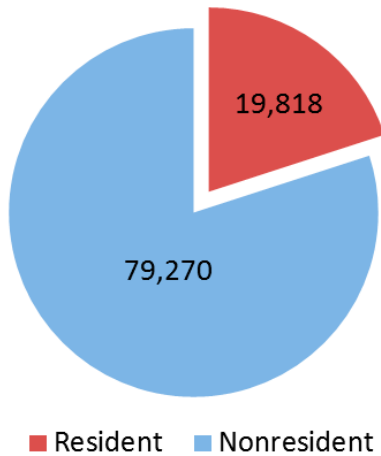
Medicare Recipients Served



The Senior Health Insurance Information Program (SHIIP) provides Medicare counseling, education and assistance to Medicare beneficiaries and their caregivers.

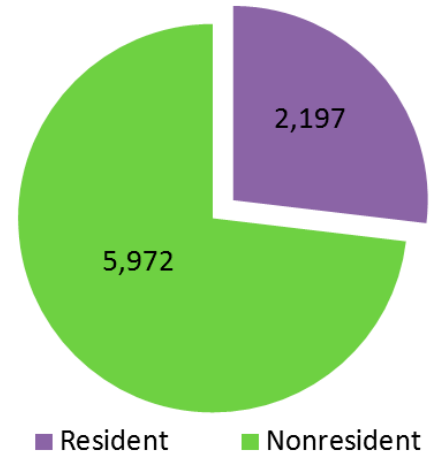
Producers and Business Entities (Agents and Agencies)

Producers and Adjusters



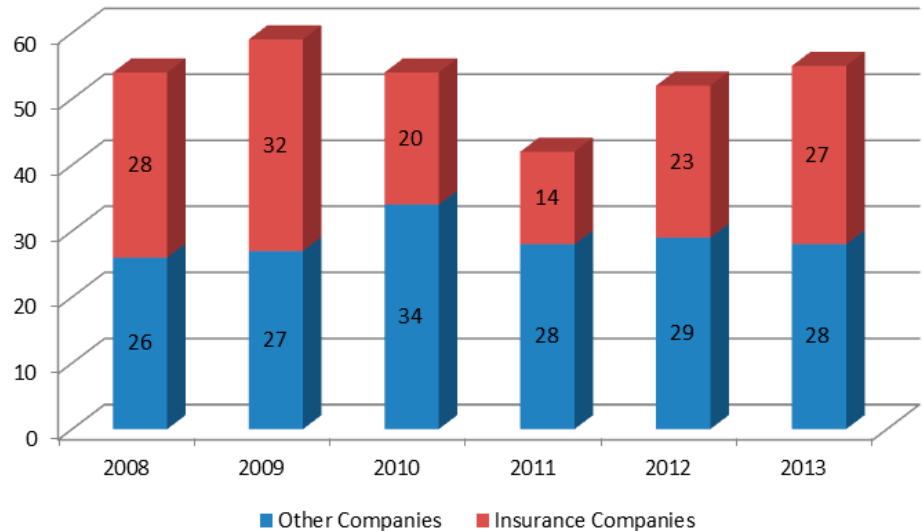
AID License Division licenses resident and nonresident producers, adjusters, title agents and business entities that are soliciting, selling or negotiating insurance in the State of Arkansas. "Resident" means the producer or business entity is based in Arkansas.

Business Entities



New Company Admissions

New company admissions are subject to in-depth analysis by our Finance Division. AID admitted 27 new insurance companies and 28 other companies in 2013. Other companies include automobile clubs, risk retention groups, charitable gift annuity organizations, service contract providers, Accredited/Trusted Reinsurers, and surplus lines.



Total Licensed Companies

Licensed Insurance Companies	1,525
Domestic (Arkansas) Insurers	58
Foreign Insurers	1,467
Accredited/Trusted Reinsurers	29
Charitable Gift Annuity Organizations	184
Continuing Care Facilities	8
Automobile/Motor Club Associations	20
Reinsurance Intermediaries Brokers	18
Reinsurance Intermediaries Managers	4
Service Contract Providers	92
Surplus Lines Insurers	208
Domestic (Arkansas)	2
Foreign	140
Alien (non U.S.A.)	66

AID Examinations

Financial Examinations

Domestic Life Companies.....	7
Domestic Property & Casualty Companies	2
Domestic Health Maintenance Organizations.....	0
Other Domestic Organizations	1

Financial Analysis (Includes Annual and Quarterly Reviews)

Domestic Financial Reviews.....	269
Domestic Supplemental Filings Reviews	229
Holding Company & Other Filings Reviews.....	223

Prepaid Funeral Benefits Contracts

Examinations Conducted	52
Number of Licenses.....	201
Reports Reviewed	873

Insurance Fraud Investigations

Referrals Received	980
Cases Referred for Prosecution	43
Successful Prosecutions	34
Fines	\$30,500
Restitution	\$472,625

Legal Proceedings*

Bulletins Issued	20
Directives Issued	1
Orders Issued.....	125
Rules Finalized	2
Investigations Initiated	216
Investigations Closed	155
Fines and Penalties.....	\$65,700
Recoveries & Restitution for Arkansas Consumers.....	\$204,678
Multi-State Settlements	0
Company Mergers	18
Certificate of Authority Cancellations	6

Liquidations and Rehabilitations*

A. *Liquidations* A.C.A. § 23-61-112(2).

No original actions were filed for liquidation of any domestic Arkansas insurance companies during the reporting year of 2013.

B. *Rehabilitations* A.C.A. § 23-61-112(3).

No original actions were filed for rehabilitation of any domestic Arkansas insurance companies during the reporting year of 2013.

*Department Bulletins, Directives, Public Orders, Rules and Court Orders of Rehabilitation/Liquidation are now available in electronic format at www.insurance.arkansas.gov/Legal.htm.

Insurers Listed by Arkansas Premium as of 12/31/2013

Domestic Surplus Lines

NAIC	Company Name	AR Premium	Market Share	Assets	Liabilities	Capital & Surplus
24319	Darwin Select Ins Co	\$1,108,150	72.47%	\$213,130,374	\$149,818,002	\$63,312,372
38920	Kinsale Ins Co	\$421,017	27.53%	\$213,898,049	\$132,490,843	\$81,407,206
	TOTAL	\$1,529,167	100.00%			

Farmers Mutual Aid Associations

NAIC	Company Name	AR Premium	Market Share	Assets	Liabilities	Capital & Surplus
14244	Farmers Mutual Ins Co (Gentry)	\$3,086,046	27.9%	\$13,087,166	\$3,085,058	\$10,002,108
14250	Farm & Home Mutual (Paragould)	\$3,229,725	29.1%	\$3,801,845	\$2,238,807	\$1,563,038
14247	Farmers Mutual Ins (Rogers)	\$1,614,914	14.6%	\$6,916,256	\$1,263,621	\$5,652,635
14252	Washington County Farmers Mutual Fire	\$1,161,623	10.5%	\$26,866,322	\$738,960	\$26,127,362
14246	Farmers Fire Ins Co	\$1,025,360	9.3%	\$1,334,924	\$646,278	\$688,646
14245	Farmers Mutual Fire (Carroll County)	\$925,814	8.4%	\$2,777,909	\$725,211	\$2,052,698
14251	Logan County Farmers Mutual Aid	\$36,625	0.3%	\$1,968,532	\$36,625	\$1,931,907
	TOTAL	\$11,080,107	100.00%			

Fraternal Organizations

NAIC	Company Name	AR Premium	Market Share	Assets	Liabilities	Capital & Surplus
57541	Modern Woodmen Of Amer	\$47,480,366	41.39%	\$13,398,445,744	\$11,883,001,493	\$1,515,444,251
56014	Thrivent Financial For Lutherans	\$25,757,607	22.45%	\$72,161,546,776	\$66,363,637,110	\$5,797,909,666
57320	Woodmen World Life Ins Soc	\$24,916,236	21.72%	\$10,067,532,553	\$9,005,494,845	\$1,062,037,708
58033	Knights Of Columbus	\$5,515,108	4.81%	\$20,534,433,760	\$18,624,600,017	\$1,909,833,743
58068	Independent Order Of Foresters Us Br	\$3,563,342	3.11%	\$2,940,122,938	\$2,816,100,317	\$124,022,621
57657	Royal Neighbors Of Amer	\$3,192,029	2.78%	\$867,661,147	\$654,924,467	\$212,736,680
56499	Woodmen World Assur Life Assn	\$2,093,928	1.83%	\$59,345,918	\$46,396,102	\$12,949,816
56383	Order of United Commercial Travelers	\$1,985,188	1.73%	\$21,162,131	\$11,658,481	\$9,503,650
56030	Catholic Financial Life	\$185,997	0.16%	\$1,320,445,745	\$1,277,293,521	\$43,152,224
57088	Degree Of Honor Protective Assn	\$11,977	0.01%	\$211,396,814	\$204,998,741	\$6,398,073
57223	Baptist Life Assn	\$9,053	0.01%	\$30,992,794	\$30,116,026	\$876,768
57622	Polish Natl Alliance Us Of Na	\$1,501	0.00%	\$428,347,897	\$417,947,921	\$10,399,976
56170	Womans Life Ins Society	\$496	0.00%	\$194,400,874	\$168,990,477	\$25,410,397
	TOTAL	\$114,712,828	100.0%			

Health Maintenance Organizations and Hospital, Medical, Dental Insurers

NAIC	Company Name	AR Premium	Market Share	Assets	Liabilities	Capital & Surplus
95442	Hmo Partners Inc	\$239,001,962	27.00%	\$157,233,564	\$40,379,488	\$116,854,076
95885	Humana Hlth Plan Inc	\$211,468,127	23.89%	\$811,647,433	\$432,403,260	\$379,244,173
95448	QCA Hlth Plan Inc	\$142,711,168	16.12%	\$30,952,723	\$18,132,132	\$12,820,591
95792	Windsor Hlth Plan Inc	\$138,001,258	15.59%	\$194,663,530	\$87,179,678	\$107,483,852
47155	Delta Dental Plan of AR Inc	\$108,562,593	12.26%	\$79,839,014	\$20,825,364	\$59,013,650
95446	United Hlthcare of AR Inc	\$45,206,964	5.11%	\$15,064,591	\$5,957,889	\$9,106,702
11559	American Dental Providers of AR Inc	\$298,812	0.03%	\$683,188	\$87,903	\$595,285
	TOTAL	\$885,250,884	100.0%			

Life and Health

NAIC	Company Name	AR Premium	Market Share	Assets	Liabilities	Capital & Surplus
83470	USABLE Mut Ins Co	\$1,323,777,580	22.95%	\$1,454,455,408	\$687,264,327	\$767,191,081
79413	UnitedHealthcare Ins Co	\$269,799,322	4.68%	\$14,512,561,082	\$9,473,069,016	\$5,039,492,066
12567	Care Improvement Plus S Central Ins	\$267,233,163	4.63%	\$565,861,329	\$225,316,500	\$340,544,829
73288	Humana Ins Co	\$187,895,770	3.26%	\$5,620,432,085	\$2,545,223,064	\$3,075,209,021
65056	Jackson Natl Life Ins Co	\$179,224,316	3.11%	\$163,833,709,983	\$159,479,890,955	\$4,353,819,028
65978	Metropolitan Life Ins Co	\$138,900,700	2.41%	\$373,393,185,656	\$360,965,089,494	\$12,428,096,162
65676	Lincoln Natl Life Ins Co	\$135,896,587	2.36%	\$200,018,194,089	\$193,182,046,244	\$6,836,147,845
65838	John Hancock Life Ins Co USA	\$112,218,457	1.95%	\$239,095,601,274	\$233,286,427,583	\$5,809,173,691
69345	Teachers Ins & Ann Assoc Of Amer	\$108,661,793	1.88%	\$250,494,214,817	\$219,715,089,398	\$30,779,125,419
60488	American Gen Life Ins Co	\$84,880,570	1.47%	\$159,156,535,500	\$146,500,389,382	\$12,656,146,118
61271	Principal Life Ins Co	\$79,777,534	1.38%	\$143,741,935,965	\$139,599,705,471	\$4,142,230,495
66869	Nationwide Life Ins Co	\$79,284,732	1.37%	\$120,675,581,417	\$117,125,630,142	\$3,549,951,275
60380	American Family Life Assur Co of Col	\$76,444,411	1.33%	\$107,912,974,759	\$98,282,915,939	\$9,630,058,820
68675	Security Benefit Life Ins Co	\$68,896,232	1.19%	\$20,702,296,559	\$19,657,493,226	\$1,044,803,333
86231	Transamerica Life Ins Co	\$68,681,589	1.19%	\$115,276,062,906	\$110,558,209,923	\$4,717,852,983
67091	Northwestern Mut Life Ins Co	\$64,276,831	1.11%	\$215,165,005,933	\$197,966,221,335	\$17,198,784,598
70238	Variable Ann Life Ins Co	\$61,487,553	1.07%	\$77,174,391,941	\$72,362,526,287	\$4,811,865,654
68241	Prudential Ins Co Of Amer	\$60,648,131	1.05%	\$296,637,147,283	\$287,254,565,776	\$9,382,581,507
68896	Southern Farm Bureau Life Ins Co	\$60,446,789	1.05%	\$12,679,324,746	\$10,352,130,457	\$2,327,194,289
69108	State Farm Life Ins Co	\$56,483,583	0.98%	\$60,442,042,798	\$51,997,386,434	\$8,444,656,364
12575	SilverScript Ins Co	\$54,925,660	0.95%	\$2,479,404,546	\$2,147,542,442	\$331,862,104
62944	AXA Equitable Life Ins Co	\$54,349,455	0.94%	\$158,657,785,355	\$154,832,315,178	\$3,825,470,177
65005	RiverSource Life Ins Co	\$52,042,850	0.90%	\$104,355,552,280	\$101,669,685,373	\$2,685,866,907
94358	USABLE Life	\$51,341,437	0.89%	\$408,256,523	\$241,938,717	\$166,317,806
62235	Unum Life Ins Co Of Amer	\$51,066,383	0.89%	\$19,078,536,320	\$17,520,669,272	\$1,557,867,048
66915	New York Life Ins Co	\$49,338,345	0.86%	\$139,197,760,773	\$121,343,990,709	\$17,853,770,064
67466	Pacific Life Ins Co	\$49,093,918	0.85%	\$109,064,765,998	\$102,561,878,937	\$6,502,887,061
69868	United Of Omaha Life Ins Co	\$46,361,744	0.80%	\$18,122,473,437	\$16,895,600,881	\$1,226,872,556
86509	Ing Life Ins & Ann Co	\$45,823,073	0.79%	\$85,670,135,629	\$83,659,373,872	\$2,010,761,757
68136	Protective Life Ins Co	\$44,301,864	0.77%	\$41,027,033,990	\$38,109,357,934	\$2,917,676,056
66044	Midland Natl Life Ins Co	\$43,305,245	0.75%	\$37,441,034,458	\$34,877,980,033	\$2,563,054,425
91596	New York Life Ins & Ann Corp	\$43,035,591	0.75%	\$119,946,553,420	\$113,198,461,233	\$6,748,092,187
79227	Pruco Life Ins Co	\$42,877,482	0.74%	\$98,541,254,455	\$96,154,353,149	\$2,386,901,306
60054	Aetna Life Ins Co	\$42,544,524	0.74%	\$21,793,144,566	\$18,593,275,939	\$3,199,868,627
90611	Allianz Life Ins Co Of N Amer	\$39,266,238	0.68%	\$104,722,725,825	\$100,296,557,979	\$4,426,167,846
61050	MetLife Investors USA Ins Co	\$38,383,977	0.67%	\$98,069,661,661	\$96,136,475,960	\$1,933,185,701
12231	UnitedHealthcare Ins Co of the River	\$35,600,953	0.62%	\$115,488,784	\$64,716,887	\$50,771,897
92738	American Equity Invest Life Ins Co	\$34,582,544	0.60%	\$32,435,472,755	\$30,564,744,417	\$1,870,728,338
68322	Great W Life & Ann Ins Co	\$29,931,648	0.52%	\$52,281,977,318	\$51,081,368,111	\$1,200,609,207
70815	Hartford Life & Accident Ins Co	\$27,450,874	0.48%	\$13,890,810,463	\$8,295,639,128	\$5,595,171,335
63312	Great Amer Life Ins Co	\$26,957,150	0.47%	\$20,182,198,720	\$18,670,398,367	\$1,511,800,352
70670	Health Care Serv Corp A Mut Legal Re	\$26,020,003	0.45%	\$16,713,553,772	\$6,441,920,577	\$10,271,633,195
66168	Minnesota Life Ins Co	\$25,911,457	0.45%	\$33,154,406,628	\$30,824,726,627	\$2,329,680,000
65935	Massachusetts Mut Life Ins Co	\$25,836,943	0.45%	\$182,776,470,724	\$170,252,023,820	\$12,524,446,904
81973	Coventry Hlth & Life Ins Co	\$25,613,318	0.44%	\$1,162,540,190	\$576,658,220	\$585,881,970
90328	First Hlth Life & Hlth Ins Co	\$25,149,408	0.44%	\$505,648,992	\$272,309,845	\$233,339,147
65757	Shelter Life Ins Co	\$24,307,886	0.42%	\$1,078,448,412	\$896,874,319	\$181,574,093
68608	Symetra Life Ins Co	\$24,299,779	0.42%	\$27,220,041,375	\$25,350,321,723	\$1,869,719,652
71153	Hartford Life & Ann Ins Co	\$23,709,063	0.41%	\$54,556,922,577	\$51,476,315,119	\$3,080,607,458
62510	Equitrust Life Ins Co	\$23,360,657	0.40%	\$12,615,488,659	\$11,769,262,695	\$846,225,964
91642	Forethought Life Ins Co	\$22,399,865	0.39%	\$7,957,225,259	\$7,434,762,466	\$522,462,793
70688	Transamerica Financial Life Ins Co	\$22,364,248	0.39%	\$29,402,390,662	\$28,467,814,431	\$934,576,231
60410	American Fidelity Assur Co	\$22,184,856	0.38%	\$4,709,850,280	\$4,367,178,976	\$342,671,304
62286	Golden Rule Ins Co	\$21,974,509	0.38%	\$759,785,315	\$466,290,127	\$293,495,188

Life and Health (Cont.)

NAIC	Company Name	AR Premium	Market Share	Assets	Liabilities	Capital & Surplus
61689	Aviva Life & Ann Co	\$21,674,649	0.38%	\$43,841,716,475	\$42,862,934,874	\$978,781,601
65315	Liberty Life Assur Co Of Boston	\$20,913,822	0.36%	\$13,115,090,983	\$12,398,209,459	\$716,881,524
88072	Hartford Life Ins Co	\$20,908,484	0.36%	\$128,073,780,016	\$123,068,738,436	\$5,005,041,581
69019	Standard Ins Co	\$20,420,031	0.35%	\$19,118,662,354	\$17,831,312,961	\$1,287,349,393
70025	Genworth Life Ins Co	\$19,737,442	0.34%	\$36,445,358,316	\$32,958,182,303	\$3,487,176,013
68381	Reliance Standard Life Ins Co	\$19,308,342	0.33%	\$5,980,358,543	\$5,381,975,550	\$598,382,993
64246	Guardian Life Ins Co Of Amer	\$18,196,942	0.32%	\$42,065,979,357	\$37,054,094,152	\$5,011,885,205
67369	Cigna Hlth & Life Ins Co	\$17,493,913	0.30%	\$4,139,266,502	\$2,426,082,991	\$1,713,183,511
62308	Connecticut Gen Life Ins Co	\$16,743,784	0.29%	\$18,573,626,585	\$15,327,194,046	\$3,246,432,539
92711	HCC Life Ins Co	\$16,464,649	0.29%	\$750,192,368	\$313,299,796	\$436,892,573
61263	Bankers Life & Cas Co	\$16,182,233	0.28%	\$15,839,542,519	\$14,782,591,029	\$1,056,951,490
12902	Healthspring Life & Hlth Ins Co Inc	\$16,173,093	0.28%	\$671,908,978	\$287,174,011	\$384,734,967
67172	Ohio Natl Life Ins Co	\$15,720,772	0.27%	\$25,384,877,653	\$24,382,133,468	\$1,002,744,185
68195	Provident Life & Accident Ins Co	\$15,646,813	0.27%	\$8,347,582,371	\$7,647,874,056	\$699,708,316
64467	Wellcare Hlth Ins of KY Inc	\$15,495,103	0.27%	\$291,352,612	\$167,805,271	\$123,547,341
63274	Fidelity & Guar Life Ins Co	\$15,202,572	0.26%	\$17,422,516,262	\$16,314,261,503	\$1,108,254,759
89206	Ohio Natl Life Assur Corp	\$15,103,826	0.26%	\$3,408,148,155	\$3,091,372,027	\$316,776,128
67105	Reliastar Life Ins Co	\$14,876,061	0.26%	\$21,621,230,710	\$19,678,742,886	\$1,942,487,824
60534	American Heritage Life Ins Co	\$14,678,090	0.25%	\$1,770,173,250	\$1,432,436,122	\$337,737,129
92916	United Amer Ins Co	\$14,308,041	0.25%	\$1,683,448,545	\$1,471,858,984	\$211,589,561
69663	USAA Life Ins Co	\$13,717,042	0.24%	\$21,113,959,166	\$19,140,563,600	\$1,973,395,566
65536	Genworth Life & Ann Ins Co	\$13,655,085	0.24%	\$24,161,744,432	\$21,926,761,225	\$2,234,983,207
93548	PHL Variable Ins Co	\$12,946,084	0.22%	\$6,163,596,218	\$5,940,743,055	\$222,853,163
60739	American Natl Ins Co	\$12,763,962	0.22%	\$18,036,217,873	\$15,368,359,662	\$2,667,858,211
62049	Colonial Life & Accident Ins Co	\$12,554,820	0.22%	\$2,752,689,389	\$2,214,443,642	\$538,245,747
66850	National Western Life Ins Co	\$12,553,091	0.22%	\$9,771,161,177	\$8,644,929,231	\$1,126,231,946
83836	Selected Funeral & Life Ins Co	\$12,531,309	0.22%	\$168,123,759	\$142,970,341	\$25,153,418
65498	Life Ins Co Of N Amer	\$12,418,310	0.22%	\$6,711,907,633	\$5,608,453,672	\$1,103,453,961
63177	Farmers New World Life Ins Co	\$11,954,090	0.21%	\$7,140,964,378	\$6,574,373,324	\$566,591,054
65919	Primerica Life Ins Co	\$11,710,921	0.20%	\$1,479,769,790	\$916,509,356	\$563,260,434
61492	Athene Annuity & Life Assur Co	\$11,301,138	0.20%	\$11,775,572,758	\$10,725,510,003	\$1,050,062,755
92622	Western Southern Life Assur Co	\$11,204,317	0.19%	\$13,146,807,242	\$11,970,126,754	\$1,176,680,488
66974	North Amer Co Life & Hlth Ins	\$11,101,026	0.19%	\$15,021,668,572	\$13,956,521,072	\$1,065,147,500
62626	CMFG Life Ins Co	\$11,020,520	0.19%	\$15,659,812,284	\$14,106,327,157	\$1,553,485,127
63762	Medco Containment Life Ins Co	\$10,710,483	0.19%	\$807,031,839	\$522,583,421	\$284,448,418
80942	ING USA Ann & Life Ins Co	\$10,637,040	0.18%	\$69,266,034,432	\$67,324,429,643	\$1,941,604,789
66281	Monumental Life Ins Co	\$10,284,797	0.18%	\$31,879,574,241	\$30,908,349,522	\$971,224,719
91472	Globe Life & Accident Ins Co	\$10,267,706	0.18%	\$3,363,522,962	\$3,105,215,350	\$258,307,612
80802	US Br Sun Life Assur Co of Canada	\$10,238,792	0.18%	\$15,368,893,261	\$14,602,151,104	\$766,742,157
68284	Pyramid Life Ins Co	\$10,014,393	0.17%	\$211,756,750	\$107,536,003	\$104,220,747
68357	Reliable Life Ins Co	\$9,685,869	0.17%	\$22,713,375	\$9,460,821	\$13,252,554
60186	Allstate Life Ins Co	\$9,614,570	0.17%	\$47,858,510,933	\$44,983,391,764	\$2,875,119,169
60895	American United Life Ins Co	\$9,306,684	0.16%	\$22,267,413,527	\$21,286,732,872	\$980,680,655
69477	Time Ins Co	\$8,864,999	0.15%	\$691,510,276	\$479,499,129	\$212,011,147
65595	Lincoln Benefit Life Co	\$8,571,136	0.15%	\$2,070,873,824	\$1,738,400,865	\$332,472,959
66583	National Guardian Life Ins Co	\$8,158,717	0.14%	\$2,730,752,212	\$2,489,406,571	\$241,345,641
67644	Penn Mut Life Ins Co	\$7,919,162	0.14%	\$15,945,191,145	\$14,454,505,414	\$1,490,685,731
71412	Mutual Of Omaha Ins Co	\$7,791,203	0.14%	\$5,795,359,051	\$3,120,813,207	\$2,674,545,844
83607	Guggenheim Life & Ann Co	\$7,574,539	0.13%	\$11,101,839,602	\$10,551,044,018	\$550,795,584
12321	American Continental Ins Co	\$7,109,525	0.12%	\$127,158,668	\$75,883,290	\$51,275,378
88668	Mutual Of Amer Life Ins Co	\$6,937,276	0.12%	\$16,666,681,959	\$15,715,519,445	\$951,162,514
77968	Family Heritage Life Ins Co Of Amer	\$6,926,774	0.12%	\$641,538,774	\$574,634,072	\$66,904,702
61301	Ameritas Life Ins Corp	\$6,908,953	0.12%	\$9,187,766,947	\$7,685,970,980	\$1,501,795,967
70998	Qualchoice Life & Hlth Ins Co Inc	\$6,906,385	0.12%	\$2,406,131	\$702,239	\$1,703,892

Life and Health (Cont.)

NAIC	Company Name	AR Premium	Market Share	Assets	Liabilities	Capital & Surplus
62146	Combined Ins Co Of Amer	\$6,791,071	0.12%	\$1,588,946,311	\$1,264,371,598	\$324,574,713
65021	Stonebridge Life Ins Co	\$6,536,900	0.11%	\$1,739,856,555	\$1,631,405,742	\$108,450,813
84174	ELCO Mut Life & Ann	\$6,309,534	0.11%	\$362,774,542	\$322,007,339	\$40,767,203
65927	Lincoln Heritage Life Ins Co	\$6,251,058	0.11%	\$740,820,277	\$639,644,046	\$101,176,231
65129	Kansas City Life Ins Co	\$6,093,848	0.11%	\$3,386,365,232	\$3,055,766,145	\$330,599,087
92657	Nationwide Life & Ann Ins Co	\$6,059,108	0.11%	\$6,901,560,158	\$6,367,493,713	\$534,066,445
93696	Fidelity Investments Life Ins Co	\$5,889,096	0.10%	\$22,477,420,784	\$21,862,699,194	\$614,721,590
65528	Life Ins Co Of The Southwest	\$5,823,662	0.10%	\$12,354,872,316	\$11,634,712,657	\$720,159,660
72850	United World Life Ins Co	\$5,713,465	0.10%	\$114,871,299	\$66,251,301	\$48,619,998
70319	Washington Natl Ins Co	\$5,633,607	0.10%	\$5,286,071,673	\$4,854,172,693	\$431,898,980
87726	Metlife Ins Co of CT	\$5,448,964	0.09%	\$60,275,177,238	\$55,480,611,801	\$4,794,565,437
83968	Citizens Fidelity Ins Co	\$5,389,329	0.09%	\$66,125,461	\$55,590,999	\$10,534,462
64017	Jefferson Natl Life Ins Co	\$5,336,230	0.09%	\$3,053,451,238	\$3,014,003,502	\$39,447,736
70939	Gerber Life Ins Co	\$4,988,112	0.09%	\$2,548,126,390	\$2,284,607,457	\$263,518,933
76112	Oxford Life Ins Co	\$4,986,133	0.09%	\$1,097,680,988	\$949,194,996	\$148,485,992
70335	West Coast Life Ins Co	\$4,767,348	0.08%	\$4,516,103,717	\$4,066,112,702	\$449,991,015
65331	Liberty Natl Life Ins Co	\$4,640,188	0.08%	\$7,257,941,188	\$6,668,213,722	\$589,727,466
73881	American Life & Annuity Co	\$4,411,197	0.08%	\$47,830,752	\$44,003,119	\$3,827,633
84034	First Guar Ins Co	\$4,342,759	0.08%	\$54,505,845	\$48,865,566	\$5,640,279
94250	Banner Life Ins Co	\$4,323,590	0.07%	\$1,687,688,496	\$1,237,652,056	\$450,036,440
66427	MTL Ins Co	\$4,294,850	0.07%	\$1,894,919,734	\$1,767,104,282	\$127,815,452
60577	American Income Life Ins Co	\$4,222,388	0.07%	\$2,694,743,353	\$2,462,470,422	\$232,272,931
80314	Unicare Life & Hlth Ins Co	\$4,216,121	0.07%	\$469,053,917	\$342,803,454	\$126,250,463
68462	Reserve Natl Ins Co	\$4,213,437	0.07%	\$111,175,740	\$58,760,649	\$52,415,092
70408	Union Security Ins Co	\$4,180,170	0.07%	\$5,085,826,710	\$4,651,113,839	\$434,712,871
68713	Security Life Of Denver Ins Co	\$4,170,278	0.07%	\$15,066,633,398	\$14,032,645,908	\$1,033,987,490
71730	Continental Amer Ins Co	\$4,094,968	0.07%	\$382,392,646	\$244,393,613	\$137,999,033
62065	Colonial Penn Life Ins Co	\$3,992,353	0.07%	\$740,286,680	\$678,318,760	\$61,967,920
65242	Lafayette Life Ins Co	\$3,951,686	0.07%	\$3,836,511,614	\$3,642,784,275	\$193,727,339
87963	National Teachers Assoc Life Ins Co	\$3,847,711	0.07%	\$381,829,745	\$308,699,080	\$73,130,665
80837	Union Central Life Ins Co	\$3,841,976	0.07%	\$6,491,294,422	\$5,933,124,133	\$558,170,289
93629	Prudential Retirement Ins & Ann Co	\$3,790,448	0.07%	\$78,046,516,557	\$77,105,488,146	\$941,028,411
61883	Central United Life Ins Co	\$3,707,723	0.06%	\$307,249,259	\$230,603,678	\$76,645,581
60076	Security Plan Life Ins Co	\$3,594,550	0.06%	\$320,523,814	\$266,388,939	\$54,134,875
70106	United States Life Ins Co In NYC	\$3,468,290	0.06%	\$25,538,037,807	\$23,772,797,264	\$1,765,240,543
67989	American Memorial Life Ins Co	\$3,466,917	0.06%	\$2,493,717,082	\$2,390,255,839	\$103,461,243
12747	Envision Ins Co	\$3,463,052	0.06%	\$309,556,322	\$284,092,012	\$25,464,310
77828	Companion Life Ins Co	\$3,418,762	0.06%	\$251,724,873	\$113,713,861	\$138,011,012
60445	Sagikor Life Ins Co	\$3,300,158	0.06%	\$1,176,198,373	\$1,100,371,779	\$75,826,594
63479	United Teacher Assoc Ins Co	\$3,252,620	0.06%	\$939,975,854	\$855,565,378	\$84,410,476
78778	Guardian Ins & Ann Co Inc	\$3,202,177	0.06%	\$14,529,623,635	\$14,348,705,119	\$180,918,515
60984	Compbenefits Ins Co	\$3,160,883	0.05%	\$51,482,248	\$10,537,769	\$40,944,479
61921	Citizens Security Life Ins Co	\$3,055,218	0.05%	\$22,386,261	\$9,755,447	\$12,630,814
61476	Boston Mut Life Ins Co	\$3,040,626	0.05%	\$1,188,767,718	\$1,046,253,494	\$142,514,224
69000	Northwestern Long Term Care Ins Co	\$3,039,551	0.05%	\$2,220,146,334	\$2,006,396,186	\$213,750,148
62952	Equitable Life & Cas Ins Co	\$3,008,265	0.05%	\$275,845,901	\$236,731,855	\$39,114,046
68543	Liberty Bankers Life Ins Co	\$2,968,788	0.05%	\$1,035,285,685	\$867,332,225	\$167,953,460
97055	Mega Life & Hlth Ins Co The	\$2,797,328	0.05%	\$280,981,346	\$171,797,258	\$109,184,088
62324	Freedom Life Ins Co Of Amer	\$2,752,184	0.05%	\$56,195,957	\$33,641,707	\$22,554,250
80578	Physicians Mut Ins Co	\$2,699,273	0.05%	\$1,920,523,118	\$989,398,389	\$931,124,729
69396	Texas Life Ins Co	\$2,672,508	0.05%	\$952,866,475	\$872,515,259	\$80,351,216
67326	Old Surety Life Ins Co	\$2,618,616	0.05%	\$24,899,583	\$14,190,163	\$10,709,420
63258	Federated Life Ins Co	\$2,574,282	0.04%	\$1,435,523,643	\$1,141,978,577	\$293,545,066
76236	Cincinnati Life Ins Co	\$2,541,758	0.04%	\$3,737,511,716	\$3,490,519,470	\$246,992,246

Life and Health (Cont.)

NAIC	Company Name	AR Premium	Market Share	Assets	Liabilities	Capital & Surplus
65900	Conseco Life Ins Co	\$2,524,597	0.04%	\$3,825,490,689	\$3,695,798,360	\$129,692,328
77879	5 Star Life Ins Co	\$2,521,641	0.04%	\$248,677,397	\$208,147,691	\$40,529,706
62863	Trustmark Life Ins Co	\$2,509,625	0.04%	\$365,541,679	\$204,977,218	\$160,564,461
72125	Physicians Life Ins Co	\$2,487,770	0.04%	\$1,378,696,838	\$1,256,042,660	\$122,654,178
64211	Guarantee Trust Life Ins Co	\$2,454,942	0.04%	\$366,082,544	\$311,748,547	\$54,333,997
31119	Medico Ins Co	\$2,425,933	0.04%	\$65,729,179	\$35,982,393	\$29,746,786
61425	Trustmark Ins Co	\$2,413,517	0.04%	\$1,369,779,673	\$1,072,008,688	\$297,770,986
67814	Phoenix Life Ins Co	\$2,334,008	0.04%	\$13,564,167,981	\$12,967,122,941	\$597,045,040
83860	American Home Life Ins Co	\$2,237,527	0.04%	\$18,427,237	\$17,974,904	\$452,333
71714	Berkshire Life Ins Co of Amer	\$2,175,283	0.04%	\$3,461,352,316	\$2,878,352,594	\$582,999,723
63665	General Amer Life Ins Co	\$2,132,180	0.04%	\$12,025,687,513	\$11,207,608,013	\$818,079,500
62928	EMC Natl Life Co	\$2,123,266	0.04%	\$1,030,170,282	\$942,234,605	\$87,935,677
95489	Coventry Hlth Care of KS Inc	\$2,045,866	0.04%	\$204,423,051	\$88,915,611	\$115,507,439
60142	TIAA Cref Life Ins Co	\$1,939,118	0.03%	\$7,988,639,007	\$7,614,805,598	\$373,833,409
69116	State Life Ins Co	\$1,928,504	0.03%	\$5,010,611,135	\$4,678,606,061	\$332,005,074
67598	Paul Revere Life Ins Co	\$1,905,464	0.03%	\$4,301,833,572	\$3,965,746,374	\$336,087,198
98205	National Found Life Ins Co	\$1,859,351	0.03%	\$26,678,261	\$16,172,872	\$10,505,389
65110	Kanawha Ins Co	\$1,846,382	0.03%	\$1,623,038,143	\$1,467,891,722	\$155,146,421
63053	Family Life Ins Co	\$1,788,743	0.03%	\$147,570,346	\$115,650,564	\$31,919,782
63983	United Heritage Life Ins Co	\$1,786,158	0.03%	\$520,094,566	\$464,697,046	\$55,397,520
71161	Principal Natl Life Ins Co	\$1,773,683	0.03%	\$110,351,033	\$26,114,475	\$84,236,558
68810	Sentry Life Ins Co	\$1,769,018	0.03%	\$4,909,669,593	\$4,637,135,473	\$272,534,120
65080	John Alden Life Ins Co	\$1,748,514	0.03%	\$362,816,665	\$294,432,286	\$68,384,379
81108	United Security Life & Hlth Ins Co	\$1,732,283	0.03%	\$9,966,865	\$6,240,823	\$3,726,042
66214	Heartland Natl Life Ins Co	\$1,689,966	0.03%	\$8,954,831	\$5,628,733	\$3,326,098
64505	Homesteaders Life Co	\$1,677,593	0.03%	\$2,378,064,462	\$2,228,423,723	\$149,640,739
67199	Old Amer Ins Co	\$1,664,048	0.03%	\$248,333,060	\$226,352,393	\$21,980,667
64513	Horace Mann Life Ins Co	\$1,654,493	0.03%	\$7,281,400,743	\$6,909,009,471	\$372,391,273
61999	Americo Fin Life & Ann Ins Co	\$1,646,712	0.03%	\$3,804,367,797	\$3,362,102,048	\$442,265,749
80926	Sun Life & Hlth Ins Co	\$1,622,451	0.03%	\$353,705,585	\$171,689,296	\$182,016,289
71870	Fidelity Security Life Ins Co	\$1,608,413	0.03%	\$819,486,462	\$684,220,293	\$135,266,169
84530	US Financial Life Ins Co	\$1,512,518	0.03%	\$638,132,457	\$575,654,514	\$62,477,943
71854	AAA Life Ins Co	\$1,485,205	0.03%	\$539,246,466	\$435,151,972	\$104,094,494
61212	Baltimore Life Ins Co	\$1,463,914	0.03%	\$1,085,735,914	\$1,012,961,770	\$72,774,144
65412	Life Ins Co Of AL	\$1,438,131	0.02%	\$107,972,087	\$74,931,785	\$33,040,302
92703	United Natl Life Ins Co Of Amer	\$1,387,577	0.02%	\$13,531,286	\$9,643,411	\$3,887,875
93262	Penn Ins & Ann Co	\$1,358,568	0.02%	\$2,307,274,424	\$1,996,532,910	\$310,741,514
69485	Security Natl Life Ins Co	\$1,342,929	0.02%	\$477,575,724	\$447,978,435	\$29,597,289
74780	Integrity Life Ins Co	\$1,342,110	0.02%	\$6,056,680,741	\$5,388,658,355	\$668,022,386
97136	Metropolitan Tower Life Ins Co	\$1,310,840	0.02%	\$4,942,802,281	\$4,207,345,073	\$735,457,208
69930	United Ins Co Of Amer	\$1,293,660	0.02%	\$3,591,712,146	\$3,155,635,945	\$436,076,201
61751	Central States H & L Co Of Omaha	\$1,252,988	0.02%	\$395,517,233	\$275,900,397	\$119,616,835
60801	American Public Life Ins Co	\$1,239,608	0.02%	\$80,319,825	\$58,617,208	\$21,702,617
66370	Mony Life Ins Co	\$1,207,751	0.02%	\$7,683,134,220	\$7,373,908,078	\$309,226,143
86118	Arkansas Bankers Life Ins Co	\$1,160,158	0.02%	\$3,528,974	\$1,704,573	\$1,824,401
71439	Assurity Life Ins Co	\$1,148,111	0.02%	\$2,449,282,457	\$2,142,856,435	\$306,426,022
63967	Government Personnel Mut Life Ins Co	\$1,147,825	0.02%	\$830,917,884	\$721,751,708	\$109,166,176
81043	Bankers Life Ins Co	\$1,142,675	0.02%	\$251,380,459	\$225,103,144	\$26,277,315
83992	Foundation Life Ins Co Of AR	\$1,137,158	0.02%	\$5,692,591	\$4,039,847	\$1,652,744
78077	Mony Life Ins Co Of Amer	\$1,125,378	0.02%	\$2,794,338,410	\$2,437,652,801	\$356,685,609
79065	Sun Life Assur Co Of Canada US	\$1,117,786	0.02%	\$39,279,197,972	\$37,868,778,220	\$1,410,419,752
68845	Shenandoah Life Ins Co	\$1,116,083	0.02%	\$1,278,807,467	\$1,197,741,329	\$81,066,138
61190	Auto Owners Life Ins Co	\$1,079,236	0.02%	\$3,509,213,107	\$3,185,723,330	\$323,489,776
93513	MetLife Investors Ins Co	\$1,077,028	0.02%	\$14,875,933,233	\$14,210,145,038	\$665,788,195

Life and Health (Cont.)

NAIC	Company Name	AR Premium	Market Share	Assets	Liabilities	Capital & Surplus
63290	Fidelity Life Assn A Legal Reserve L	\$1,069,112	0.02%	\$414,576,239	\$290,510,150	\$124,066,089
70580	Humanadental Ins Co	\$1,067,431	0.02%	\$140,580,762	\$66,669,391	\$73,911,371
76023	Columbian Life Ins Co	\$1,052,607	0.02%	\$292,655,872	\$268,359,120	\$24,296,752
90557	Zurich Amer Life Ins Co	\$1,050,741	0.02%	\$12,968,646,199	\$12,836,586,861	\$132,059,338
67784	Philadelphia Amer Life Ins Co	\$1,045,494	0.02%	\$205,698,055	\$176,743,293	\$28,954,762
81779	Individual Assur Co Life Hlth & Acc	\$1,042,363	0.02%	\$19,501,365	\$11,961,276	\$7,540,089
77399	Sterling Life Ins Co	\$1,030,838	0.02%	\$113,012,166	\$68,624,029	\$44,388,137
61832	Chesapeake Life Ins Co	\$956,871	0.02%	\$42,481,270	\$21,628,005	\$20,853,265
65722	Loyal Amer Life Ins Co	\$953,583	0.02%	\$244,038,600	\$172,516,970	\$71,521,630
67660	Pennsylvania Life Ins Co	\$953,438	0.02%	\$633,915,910	\$213,094,573	\$420,821,337
70548	Wichita Natl Life Ins Co	\$944,926	0.02%	\$18,010,832	\$10,144,054	\$7,866,778
91626	New England Life Ins Co	\$937,915	0.02%	\$11,640,206,897	\$11,069,146,542	\$571,060,355
67652	First Penn Pacific Life Ins Co	\$937,871	0.02%	\$1,817,414,927	\$1,581,823,537	\$235,591,390
67539	Pan Amer Life Ins Co	\$898,448	0.02%	\$1,425,506,771	\$1,180,871,448	\$244,635,322
64890	Berkley Life & Hlth Ins Co	\$894,283	0.02%	\$166,290,410	\$72,072,300	\$94,218,110
69078	Standard Security Life Ins Co Of NY	\$877,631	0.02%	\$249,502,897	\$135,531,122	\$113,971,775
67393	Ozark Natl Life Ins Co	\$873,678	0.02%	\$730,574,202	\$607,199,478	\$123,374,724
62359	Constitution Life Ins Co	\$854,465	0.01%	\$317,342,464	\$283,875,934	\$33,466,530
73474	Dentegra Ins Co	\$845,153	0.01%	\$42,115,931	\$11,316,643	\$30,799,288
84115	Jackson Griffin Ins Co	\$839,298	0.01%	\$10,987,419	\$10,594,266	\$393,153
60542	American Home Life Ins Co	\$837,828	0.01%	\$235,772,112	\$216,964,777	\$18,807,336
68985	Starmount Life Ins Co	\$837,446	0.01%	\$51,137,913	\$28,808,584	\$22,329,329
80799	Celtic Ins Co	\$829,294	0.01%	\$83,524,715	\$39,703,044	\$43,821,671
93432	CM Life Ins Co	\$804,420	0.01%	\$8,984,023,479	\$7,912,819,284	\$1,071,204,195
91413	Western Reserve Life Assur Co of OH	\$791,866	0.01%	\$9,420,319,417	\$9,014,872,565	\$405,446,852
84786	Colorado Bankers Life Ins Co	\$772,733	0.01%	\$256,893,413	\$228,030,506	\$28,862,907
89184	Sterling Investors Life Ins Co	\$750,554	0.01%	\$18,333,841	\$12,093,450	\$6,240,391
67180	Ohio State Life Ins Co	\$748,036	0.01%	\$13,554,519	\$3,255,450	\$10,299,069
84824	Commonwealth Ann & Life Ins Co	\$728,504	0.01%	\$10,211,928,734	\$9,488,370,561	\$723,558,173
86355	Standard Life & Accident Ins Co	\$722,834	0.01%	\$527,648,094	\$275,425,612	\$252,222,482
76325	Senior Hlth Ins Co of PA	\$703,690	0.01%	\$2,985,938,782	\$2,887,736,889	\$98,201,892
93440	HM Life Ins Co	\$701,135	0.01%	\$557,904,667	\$273,333,033	\$284,571,634
65781	Madison Natl Life Ins Co Inc	\$678,067	0.01%	\$488,614,473	\$410,645,851	\$77,968,622
83798	Memorial Ins Co Of Amer	\$672,365	0.01%	\$1,165,782	\$82,545	\$1,083,237
92908	HealthMarkets Ins Co	\$664,431	0.01%	\$15,712,212	\$6,425,896	\$9,286,316
69744	Union Labor Life Ins Co	\$650,648	0.01%	\$2,813,706,488	\$2,726,040,682	\$87,665,806
91529	Unimerica Ins Co	\$633,534	0.01%	\$410,077,144	\$228,956,594	\$181,120,550
71390	Puritan Life Ins Co of Amer	\$608,881	0.01%	\$35,517,808	\$30,275,604	\$5,242,204
97705	Direct Gen Life Ins Co	\$606,811	0.01%	\$23,844,603	\$9,807,662	\$14,036,941
80055	Smart Ins Co	\$596,536	0.01%	\$46,052,819	\$3,714,781	\$42,338,038
60836	American Republic Ins Co	\$580,056	0.01%	\$801,428,079	\$363,964,551	\$437,463,528
60763	American Pioneer Life Ins Co	\$569,713	0.01%	\$76,693,105	\$67,012,720	\$9,680,385
79022	Transamerica Advisors Life Ins Co	\$544,998	0.01%	\$10,135,218,291	\$9,401,803,126	\$733,415,165
74799	Leaders Life Ins Co	\$543,293	0.01%	\$6,074,266	\$3,247,023	\$2,827,243
69914	Sears Life Ins Co	\$543,290	0.01%	\$48,795,345	\$27,975,691	\$20,819,654
85928	Family Liberty Life Ins Co	\$532,351	0.01%	\$31,355,879	\$22,819,690	\$8,536,189
82252	Landmark Life Ins Co	\$522,934	0.01%	\$44,863,315	\$40,072,466	\$4,790,849
61360	Reliastar Life Ins Co Of NY	\$521,673	0.01%	\$3,208,828,188	\$2,879,368,459	\$329,459,729
99937	Columbus Life Ins Co	\$511,779	0.01%	\$3,198,947,255	\$2,948,181,506	\$250,765,749
60275	American Bankers Life Assur Co Of FL	\$505,620	0.01%	\$521,590,206	\$471,224,554	\$50,365,652
71471	Ability Ins Co	\$502,935	0.01%	\$827,104,848	\$791,938,566	\$35,166,281
86630	Prudential Ann Life Assur Corp	\$494,971	0.01%	\$50,649,082,327	\$50,205,607,499	\$443,474,828
70435	The Savings Bank Life Ins Co Of MA	\$482,132	0.01%	\$2,534,372,093	\$2,320,772,781	\$213,599,312
90212	Great Southern Life Ins Co	\$479,683	0.01%	\$231,938,909	\$191,634,993	\$40,303,916

Life and Health (Cont.)

NAIC	Company Name	AR Premium	Market Share	Assets	Liabilities	Capital & Surplus
60025	Express Scripts Ins Co	\$469,348	0.01%	\$240,256,441	\$179,850,786	\$60,405,655
66087	Mid West Natl Life Ins Co Of TN	\$465,545	0.01%	\$92,033,397	\$40,320,152	\$51,713,245
65811	American Modern Life Ins Co	\$448,539	0.01%	\$52,089,878	\$25,642,367	\$26,447,511
64580	Illinois Mut Life Ins Co	\$447,785	0.01%	\$1,329,425,628	\$1,155,744,871	\$173,680,757
68594	American Amicable Life Ins Co Of TX	\$430,608	0.01%	\$258,588,056	\$179,614,798	\$78,973,258
71404	Continental Gen Ins Co	\$417,073	0.01%	\$238,444,564	\$215,670,221	\$22,774,343
84069	Smith Burial & Life Ins Co	\$411,099	0.01%	\$4,880,099	\$4,214,798	\$665,301
11121	Unified Life Ins Co	\$398,179	0.01%	\$179,569,877	\$156,765,867	\$22,804,010
69515	Medamerica Ins Co	\$396,662	0.01%	\$866,238,003	\$822,590,608	\$43,647,395
62553	Country Life Ins Co	\$395,199	0.01%	\$10,262,624,666	\$9,166,365,989	\$1,096,258,677
83933	Cooperative Life Ins Co	\$394,091	0.01%	\$6,707,493	\$4,294,555	\$2,412,938
81353	NYLife Ins Co Of AZ	\$388,907	0.01%	\$194,934,357	\$126,742,637	\$68,191,720
66680	National Life Ins Co	\$381,767	0.01%	\$9,091,306,927	\$7,678,162,670	\$1,413,144,257
71773	American Natl Life Ins Co Of TX	\$374,906	0.01%	\$135,100,954	\$93,736,569	\$41,364,385
71129	Dearborn Natl Life Ins Co	\$363,935	0.01%	\$2,324,085,733	\$1,884,383,259	\$439,702,474
71072	Marquette Natl Life Ins Co	\$361,460	0.01%	\$6,858,773	\$1,173,347	\$5,685,426
63657	Garden State Life Ins Co	\$341,954	0.01%	\$117,083,272	\$68,538,133	\$48,545,139
68500	Continental Life Ins Co Brentwood	\$338,361	0.01%	\$205,568,182	\$108,603,062	\$96,965,120
93661	Annuity Investors Life Ins Co	\$328,487	0.01%	\$2,892,880,955	\$2,689,638,276	\$203,242,679
63487	Investors Life Ins Co N Amer	\$326,419	0.01%	\$691,305,710	\$642,056,138	\$49,249,572
93777	Pavonia Life Ins Co of MI	\$310,834	0.01%	\$445,933,480	\$346,132,572	\$99,800,908
69132	State Mut Ins Co	\$304,118	0.01%	\$296,798,349	\$266,751,299	\$30,047,050
64327	Harleysville Life Ins Co	\$302,181	0.01%	\$414,985,521	\$388,936,320	\$26,049,201
62413	Continental Assur Co	\$298,302	0.01%	\$2,937,872,435	\$2,340,563,576	\$597,308,859
69922	United Home Life Ins Co	\$294,072	0.01%	\$75,087,626	\$56,692,684	\$18,394,942
64238	Guaranty Income Life Ins Co	\$292,132	0.01%	\$477,948,855	\$446,967,871	\$30,980,984
62596	Union Fidelity Life Ins Co	\$291,170	0.01%	\$19,510,637,064	\$18,941,294,314	\$569,342,750
80659	US Business of Canada Life Assur Co	\$270,586	0.00%	\$4,318,881,067	\$4,183,464,266	\$135,416,801
61700	Renaissance Life & Hlth Ins Co of Am	\$264,589	0.00%	\$56,387,893	\$16,719,141	\$39,668,752
61409	National Benefit Life Ins Co	\$263,112	0.00%	\$484,026,131	\$309,495,245	\$174,530,886
61875	Church Life Ins Corp	\$262,890	0.00%	\$285,273,715	\$235,008,116	\$50,265,599
69310	Surety Life Ins Co	\$255,444	0.00%	\$13,885,569	\$1,128,734	\$12,756,835
68721	Security Life Ins Co Of Amer	\$248,131	0.00%	\$73,237,779	\$53,639,230	\$19,598,549
90247	Pharmacists Life Ins Co	\$242,159	0.00%	\$88,639,956	\$81,581,760	\$7,058,196
68047	Professional Ins Co	\$231,711	0.00%	\$105,070,894	\$75,525,082	\$29,545,812
81418	American Medical & Life Ins Co	\$227,619	0.00%	\$11,088,462	\$9,111,238	\$1,977,224
67148	Occidental Life Ins Co Of NC	\$224,003	0.00%	\$249,856,427	\$216,889,288	\$32,967,139
80020	Mountain Life Ins Co	\$220,813	0.00%	\$12,011,911	\$6,904,383	\$5,107,528
67261	Old Republic Life Ins Co	\$219,937	0.00%	\$131,733,910	\$95,314,859	\$36,419,051
67083	Manhattan Natl Life Ins Co	\$214,505	0.00%	\$184,016,778	\$171,587,333	\$12,429,445
61735	Central Security Life Ins Co	\$212,017	0.00%	\$73,290,921	\$65,066,367	\$8,224,554
67873	Pioneer Amer Ins Co	\$206,256	0.00%	\$53,756,901	\$34,776,900	\$18,980,001
63819	Unity Financial Life Ins Co	\$202,346	0.00%	\$172,735,320	\$161,632,835	\$11,102,485
80985	4 Ever Life Ins Co	\$193,981	0.00%	\$186,859,445	\$96,938,809	\$89,920,636
61239	Bankers Fidelity Life Ins Co	\$193,401	0.00%	\$138,775,209	\$104,245,144	\$34,530,065
97721	Thrivent Life Ins Co	\$178,990	0.00%	\$3,468,211,157	\$3,305,604,190	\$162,606,967
68802	Sentinel Security Life Ins Co	\$177,445	0.00%	\$403,721,509	\$388,490,804	\$15,230,705
74918	Kilpatrick Life Ins Co	\$172,585	0.00%	\$179,041,062	\$172,669,282	\$6,371,780
61182	Aurora Natl Life Assur Co	\$168,424	0.00%	\$3,143,732,724	\$2,802,248,512	\$341,484,212
70483	Western & Southern Life Ins Co	\$166,633	0.00%	\$9,405,282,427	\$5,194,271,524	\$4,211,010,903
99775	Funeral Directors Life Ins Co	\$164,976	0.00%	\$978,498,217	\$892,864,447	\$85,633,770
61859	Christian Fidelity Life Ins Co	\$164,145	0.00%	\$75,428,606	\$46,580,756	\$28,847,851
87645	United Fidelity Life Ins Co	\$160,265	0.00%	\$778,232,613	\$328,062,411	\$450,170,202
73660	Directors Life Assur Co	\$158,738	0.00%	\$27,761,474	\$25,731,514	\$2,029,960

Life and Health (Cont.)

NAIC	Company Name	AR Premium	Market Share	Assets	Liabilities	Capital & Surplus
93459	Pan Amer Assur Co	\$154,051	0.00%	\$22,295,077	\$5,692,245	\$16,602,832
70130	Universal Guar Life Ins Co	\$142,410	0.00%	\$348,061,708	\$313,163,889	\$34,897,819
78662	Senior Life Ins Co	\$128,410	0.00%	\$46,880,656	\$36,571,902	\$10,308,754
77720	LifeSecure Ins Co	\$120,122	0.00%	\$189,749,288	\$169,516,840	\$20,232,448
84018	Fidelity Standard Life Ins Co	\$106,200	0.00%	\$1,684,907	\$1,237,752	\$447,155
68160	Balboa Life Ins Co	\$92,503	0.00%	\$57,714,869	\$9,953,023	\$47,761,846
72222	Amica Life Ins Co	\$90,087	0.00%	\$1,133,126,986	\$915,598,958	\$217,528,028
80705	US Br Great West Life Assur Co	\$86,671	0.00%	\$78,643,179	\$63,548,522	\$15,094,657
67628	Pekin Life Ins Co	\$83,571	0.00%	\$1,301,555,083	\$1,178,861,791	\$122,693,292
66265	Monarch Life Ins Co	\$76,971	0.00%	\$755,023,868	\$748,444,666	\$6,579,202
70416	MML Bay State Life Ins Co	\$76,709	0.00%	\$4,587,907,421	\$4,391,886,153	\$196,021,268
93734	Phoenix Life & Ann Co	\$75,563	0.00%	\$47,158,029	\$25,232,230	\$21,925,799
69973	United Life Ins Co	\$75,474	0.00%	\$1,648,018,882	\$1,490,044,658	\$157,974,224
93610	John Hancock Life & Hlth Ins Co	\$73,647	0.00%	\$9,737,622,552	\$9,054,967,844	\$682,654,708
68772	Security Mut Life Ins Co Of NY	\$72,036	0.00%	\$2,676,399,790	\$2,542,834,991	\$133,564,799
70173	Universal Underwriters Life Ins Co	\$68,780	0.00%	\$155,864,689	\$133,874,898	\$21,989,791
88536	Protective Life & Annuity Ins Co	\$68,076	0.00%	\$2,162,685,642	\$1,969,061,530	\$193,624,112
62880	AXA Equitable Life & Ann Co	\$65,715	0.00%	\$464,901,129	\$437,425,263	\$27,475,866
79057	Southland Natl Ins Corp	\$65,677	0.00%	\$167,092,060	\$157,622,755	\$9,469,305
61727	Central Reserve Life Ins Co	\$65,392	0.00%	\$22,995,288	\$2,054,541	\$20,940,747
69272	Sunset Life Ins Co Of Amer	\$65,383	0.00%	\$355,658,850	\$324,460,638	\$31,198,212
71323	Zale Life Ins Co	\$65,233	0.00%	\$11,447,047	\$2,366,169	\$9,080,878
76503	Port O Call Life Ins Co	\$63,861	0.00%	\$827,246	\$173,949	\$653,297
69566	Trans World Assur Co	\$59,850	0.00%	\$347,762,239	\$270,622,697	\$77,139,542
94218	Country Investors Life Assur Co	\$56,386	0.00%	\$286,944,835	\$113,552,093	\$173,392,743
60704	Wilton Reassur Life Co of NY	\$49,903	0.00%	\$901,333,133	\$788,208,602	\$113,124,531
67946	Pioneer Security Life Ins Co	\$48,340	0.00%	\$109,716,113	\$20,417,012	\$89,299,101
74900	Aurigen Reins Co of Amer	\$45,123	0.00%	\$21,370,590	\$833,252	\$20,537,338
88366	American Retirement Life Ins Co	\$44,317	0.00%	\$18,042,401	\$9,615,714	\$8,426,687
64904	Investors Heritage Life Ins Co	\$43,569	0.00%	\$471,873,838	\$451,661,444	\$20,212,394
71463	CICA Life Ins Co of Amer	\$42,557	0.00%	\$700,576,401	\$642,659,763	\$57,916,638
67911	Pioneer Mut Life Ins Co	\$40,409	0.00%	\$500,077,195	\$460,150,761	\$39,926,434
66540	National Farmers Union Life Ins Co	\$39,127	0.00%	\$221,564,208	\$178,397,121	\$43,167,087
68632	Vantis Life Ins Co	\$37,330	0.00%	\$896,338,991	\$824,615,483	\$71,723,508
61395	Beneficial Life Ins Co	\$37,196	0.00%	\$3,011,213,601	\$2,432,077,198	\$579,136,403
60518	American Hlth & Life Ins Co	\$32,946	0.00%	\$941,060,044	\$732,441,861	\$208,618,183
97691	Life Of The South Ins Co	\$30,543	0.00%	\$73,928,865	\$56,411,150	\$17,517,715
68209	Provident Life & Cas Ins Co	\$28,825	0.00%	\$764,107,456	\$613,217,451	\$150,890,004
68039	Athene Ann & Life Ins Co of NY	\$28,600	0.00%	\$3,525,636,366	\$3,361,240,043	\$164,396,323
67601	Paul Revere Variable Ann Ins Co	\$26,545	0.00%	\$54,785,443	\$14,684,976	\$40,100,467
80896	Centre Life Ins Co	\$26,219	0.00%	\$1,927,671,777	\$1,826,493,529	\$101,178,248
60429	American Fidelity Life Ins Co	\$25,878	0.00%	\$445,738,064	\$373,894,130	\$71,843,934
97179	UnitedHealthcare Life Ins Co	\$24,769	0.00%	\$56,953,177	\$27,696,602	\$29,256,575
62103	Columbian Mut Life Ins Co	\$24,381	0.00%	\$1,289,766,559	\$1,187,943,932	\$101,822,627
74365	Southern Pioneer Life Ins Co	\$23,882	0.00%	\$20,629,849	\$8,000,055	\$12,629,794
81213	American Maturity Life Ins Co	\$23,811	0.00%	\$61,200,343	\$13,996,871	\$47,203,471
61069	Anthem Life Ins Co	\$23,796	0.00%	\$575,280,416	\$454,879,621	\$120,400,795
83984	New Found Life Ins Co	\$23,768	0.00%	\$2,058,226	\$365,913	\$1,692,313
65870	Manhattan Life Ins Co	\$22,368	0.00%	\$310,388,750	\$273,446,966	\$36,941,784
93742	Securian Life Ins Co	\$21,028	0.00%	\$207,809,044	\$76,281,017	\$131,528,027
69140	First Allmerica Fin Life Ins Co	\$20,288	0.00%	\$4,205,964,291	\$4,051,301,605	\$154,662,686
84522	Auto Club Life Ins Co	\$20,026	0.00%	\$503,597,373	\$444,012,944	\$59,584,430
42129	United Security Assur Co Of PA	\$18,496	0.00%	\$147,875,914	\$131,695,005	\$16,180,909
67903	Provident Amer Life & Hlth Ins Co	\$17,148	0.00%	\$15,214,332	\$2,415,510	\$12,798,822

Life and Health (Cont.)

NAIC	Company Name	AR Premium	Market Share	Assets	Liabilities	Capital & Surplus
69779	Union Natl Life Ins Co	\$16,796	0.00%	\$18,528,370	\$4,213,936	\$14,314,434
63223	Federal Life Ins Co	\$15,622	0.00%	\$228,237,303	\$210,249,589	\$17,987,714
85766	United Concordia Ins Co	\$14,478	0.00%	\$58,943,109	\$25,634,230	\$33,308,879
97241	Settlers Life Ins Co	\$13,858	0.00%	\$385,557,108	\$334,025,521	\$51,531,587
66109	Midwestern United Life Ins Co	\$12,408	0.00%	\$238,684,378	\$116,707,996	\$121,976,382
81442	Monitor Life Ins Co Of NY	\$12,277	0.00%	\$18,064,695	\$8,981,688	\$9,083,006
86959	National Family Care Life Ins Co	\$11,377	0.00%	\$15,967,612	\$6,779,839	\$9,187,773
76007	Old United Life Ins Co	\$10,563	0.00%	\$87,444,622	\$42,541,168	\$44,903,454
62057	Lincoln Life & Ann Co of NY	\$10,372	0.00%	\$12,046,420,124	\$11,333,384,912	\$713,035,212
14406	Industrial Alliance Ins & Fin Serv I	\$9,123	0.00%	\$200,711,188	\$127,476,433	\$73,234,755
84107	Griffin Leggett Burial Ins Co	\$8,096	0.00%	\$112,060	\$1,202	\$110,858
91693	IA Amer Life Ins Co	\$8,080	0.00%	\$221,091,847	\$108,743,237	\$112,348,610
60003	Park Avenue Life Ins Co	\$8,049	0.00%	\$305,836,447	\$237,994,216	\$67,842,232
97764	Idealife Ins Co	\$7,982	0.00%	\$20,713,695	\$5,655,069	\$15,058,626
99724	LifeShield Natl Ins Co	\$7,884	0.00%	\$66,919,086	\$44,530,137	\$22,388,949
65951	Merit Life Ins Co	\$6,903	0.00%	\$531,975,110	\$347,510,541	\$184,464,569
62421	Heritage Union Life Ins Co	\$5,628	0.00%	\$12,046,348	\$3,406,140	\$8,640,208
63444	Accendo Ins Co	\$5,151	0.00%	\$24,318,383	\$12,336,537	\$11,981,846
86126	Members Life Ins Co	\$4,834	0.00%	\$22,974,801	\$5,145,817	\$17,828,984
70742	Family Benefit Life Ins Co	\$4,613	0.00%	\$62,342,107	\$50,868,964	\$11,473,143
85561	Perico Life Ins Co	\$4,606	0.00%	\$20,904,960	\$3,277,913	\$17,627,047
82082	Citizens Natl Life Ins Co	\$4,556	0.00%	\$12,726,589	\$10,250,158	\$2,476,431
94447	Century Life Ass Co	\$4,355	0.00%	\$12,389,517	\$6,040,672	\$6,348,845
63495	First Investors Life Ins Co	\$4,309	0.00%	\$1,641,446,689	\$1,589,632,938	\$51,813,751
81426	Commercial Travelers Mut Ins Co	\$4,132	0.00%	\$21,161,893	\$13,664,980	\$7,496,913
69647	Catamaran Ins of Ohio Inc	\$3,273	0.00%	\$9,209,190	\$317,302	\$8,891,888
68446	Longevity Ins Co	\$3,045	0.00%	\$9,034,282	\$1,186,388	\$7,847,894
82538	National Hlth Ins Co	\$2,932	0.00%	\$13,794,233	\$3,454,428	\$10,339,805
73504	Generation Life Ins Co	\$2,776	0.00%	\$32,580,786	\$1,481,522	\$31,099,264
90638	Best Life & Hlth Ins Co	\$2,607	0.00%	\$13,398,445	\$3,665,867	\$9,732,578
61581	Capitol Life Ins Co	\$2,061	0.00%	\$210,045,473	\$189,070,533	\$20,974,940
77119	Sentinel Amer Life Ins Co	\$1,977	0.00%	\$31,868,485	\$26,874,028	\$4,994,457
86371	Ullico Life Ins Co	\$1,926	0.00%	\$11,868,333	\$273,235	\$11,595,098
13100	Omaha Ins Co	\$1,823	0.00%	\$22,902,003	\$6,989,392	\$15,912,611
70955	USA Life One Ins Co Of IN	\$1,438	0.00%	\$37,012,701	\$20,924,595	\$16,088,106
85189	Investors Consolidated Ins Co	\$1,184	0.00%	\$14,770,658	\$7,393,204	\$7,377,454
88820	American Integrity Life Ins Co	\$1,101	0.00%	\$397,363	\$5,545	\$391,818
90581	Symetra Natl Life Ins Co	\$974	0.00%	\$16,688,373	\$6,696,290	\$9,992,083
79049	Alfa Life Ins Corp	\$969	0.00%	\$1,357,174,864	\$1,139,180,952	\$217,993,912
84077	Southern Fidelity Life Ins Co	\$828	0.00%	\$79,201	\$11,264	\$67,937
60183	S USA Life Ins Co Inc	\$672	0.00%	\$13,596,806	\$5,419,804	\$8,177,002
64831	Intramercia Life Ins Co	\$562	0.00%	\$35,185,328	\$25,564,570	\$9,620,758
62634	Delaware Amer Life Ins Co	\$561	0.00%	\$137,108,861	\$62,848,267	\$74,260,594
82880	CSI Life Ins Co	\$559	0.00%	\$18,090,316	\$3,813,782	\$14,276,534
60250	AmFirst Ins Co	\$509	0.00%	\$32,374,565	\$9,082,495	\$23,292,070
85286	OneNation Ins Co	\$258	0.00%	\$13,757,365	\$312,432	\$13,444,933
	TOTAL	\$5,768,685,444	100.0%			

Property and Casualty

NAIC	Company Name	AR Premium	Market Share	Assets	Liabilities	Capital & Surplus
25143	State Farm Fire & Cas Co	\$258,578,021	5.97%	\$31,460,692,892	\$20,509,531,761	\$10,951,161,131
13757	Farm Bureau Mut Ins Co Of AR Inc	\$246,417,804	5.69%	\$336,407,498	\$163,649,851	\$172,757,647
18325	Southern Farm Bureau Cas Ins Co	\$227,654,460	5.26%	\$1,998,252,554	\$762,376,373	\$1,235,876,181
23388	Shelter Mut Ins Co	\$224,354,807	5.18%	\$2,756,545,354	\$1,189,641,286	\$1,566,904,068
21628	Farmers Ins Co Inc	\$114,096,036	2.64%	\$276,154,376	\$174,776,616	\$101,377,760
17230	Allstate Prop & Cas Ins Co	\$105,372,668	2.43%	\$213,702,557	\$9,502,308	\$204,200,249
20443	Continental Cas Co	\$65,105,722	1.50%	\$42,642,332,621	\$31,505,633,012	\$11,136,699,609
42919	Progressive Northwestern Ins Co	\$64,428,862	1.49%	\$1,267,549,552	\$895,980,555	\$371,568,997
19232	Allstate Ins Co	\$56,964,102	1.32%	\$43,733,281,987	\$26,478,545,265	\$17,254,736,722
25941	United Serv Automobile Assn	\$53,616,964	1.24%	\$28,667,011,488	\$7,912,525,356	\$20,754,486,132
10677	Cincinnati Ins Co	\$52,725,834	1.22%	\$10,559,843,756	\$6,234,173,325	\$4,325,670,432
19445	National Union Fire Ins Co Of Pitts	\$52,399,884	1.21%	\$24,709,620,069	\$18,873,141,482	\$5,836,478,587
27998	Travelers Home & Marine Ins Co	\$50,763,442	1.17%	\$410,095,646	\$281,111,955	\$128,983,691
23787	Nationwide Mut Ins Co	\$49,657,502	1.15%	\$32,675,758,115	\$20,883,229,605	\$11,792,528,510
18988	Auto Owners Ins Co	\$38,049,142	0.88%	\$11,392,762,533	\$3,882,005,092	\$7,510,757,441
35882	Geico Gen Ins Co	\$38,035,339	0.88%	\$215,672,817	\$92,067,357	\$123,605,460
16535	Zurich Amer Ins Co	\$36,793,576	0.85%	\$30,184,001,188	\$22,385,582,849	\$7,798,418,339
25674	Travelers Prop Cas Co Of Amer	\$36,167,175	0.84%	\$907,007,888	\$419,996,230	\$487,011,658
25127	State Auto Prop & Cas Ins Co	\$34,587,176	0.80%	\$2,066,548,240	\$1,458,848,195	\$607,700,045
15032	Guideone Mut Ins Co	\$33,813,206	0.78%	\$1,814,524,221	\$1,354,475,136	\$460,049,085
39012	Safeco Ins Co Of IL	\$33,810,423	0.78%	\$338,222,918	\$163,016,585	\$175,206,333
40371	Columbia Mut Ins Co	\$32,206,492	0.74%	\$378,356,656	\$222,891,563	\$155,465,093
23779	Nationwide Mut Fire Ins Co	\$30,050,931	0.69%	\$5,410,139,901	\$2,965,062,569	\$2,445,077,332
22055	Geico Ind Co	\$29,423,030	0.68%	\$7,811,195,409	\$4,174,876,963	\$3,636,318,445
16322	Progressive Direct Ins Co	\$29,393,186	0.68%	\$4,724,165,455	\$3,290,880,613	\$1,433,284,842
25968	USAA Cas Ins Co	\$29,053,988	0.67%	\$8,445,777,251	\$4,277,001,437	\$4,168,775,814
23035	Liberty Mut Fire Ins Co	\$28,831,284	0.67%	\$5,561,558,829	\$4,345,262,810	\$1,216,296,019
11185	Foremost Ins Co Grand Rapids MI	\$27,953,233	0.65%	\$1,938,558,470	\$908,633,775	\$1,029,924,695
15512	Automobile Club Interins Exch	\$26,029,090	0.60%	\$415,864,016	\$217,886,257	\$197,977,759
12188	Alfa Vision Ins Corp	\$24,781,728	0.57%	\$93,353,594	\$47,448,612	\$45,904,982
21482	Factory Mut Ins Co	\$23,860,844	0.55%	\$13,795,712,203	\$4,642,256,727	\$9,153,455,476
16691	Great Amer Ins Co	\$23,401,789	0.54%	\$5,376,892,481	\$3,973,589,959	\$1,403,302,522
37877	Nationwide Prop & Cas Ins Co	\$23,387,729	0.54%	\$575,012,088	\$519,407,400	\$55,604,688
20281	Federal Ins Co	\$23,139,908	0.53%	\$31,761,349,603	\$17,020,037,687	\$14,741,311,916
23043	Liberty Mut Ins Co	\$22,621,367	0.52%	\$44,475,809,095	\$29,349,412,770	\$15,126,396,325
22667	Ace Amer Ins Co	\$22,193,025	0.51%	\$11,697,282,605	\$9,020,292,145	\$2,676,990,460
24740	Safeco Ins Co Of Amer	\$22,191,867	0.51%	\$4,747,068,958	\$3,558,396,422	\$1,188,672,536
33987	ADM Ins Co	\$21,567,575	0.50%	\$443,744,239	\$421,827,165	\$21,917,074
11770	United Financial Cas Co	\$21,058,943	0.49%	\$2,137,869,338	\$1,645,881,593	\$491,987,745
25658	Travelers Ind Co	\$20,022,823	0.46%	\$20,662,613,986	\$13,956,488,515	\$6,706,125,470
18600	USAA Gen Ind Co	\$19,775,269	0.46%	\$2,256,609,831	\$1,420,971,692	\$835,638,139
10642	Cherokee Ins Co	\$19,493,708	0.45%	\$377,627,751	\$226,078,823	\$151,548,928
21652	Farmers Ins Exch	\$19,432,647	0.45%	\$15,557,125,672	\$11,677,404,569	\$3,879,721,103
19240	Allstate Ind Co	\$18,882,531	0.44%	\$149,356,479	\$5,783,579	\$143,572,900
25135	State Automobile Mut Ins Co	\$18,846,907	0.44%	\$2,196,073,212	\$1,337,988,395	\$858,084,817
21415	Employers Mut Cas Co	\$18,387,329	0.42%	\$2,537,980,901	\$1,416,094,407	\$1,121,886,494
18058	Philadelphia Ind Ins Co	\$18,374,243	0.42%	\$6,526,061,043	\$4,369,347,538	\$2,156,713,505
31194	Travelers Cas & Surety Co Of Amer	\$18,158,941	0.42%	\$4,147,460,454	\$2,265,740,367	\$1,881,720,088
36781	John Deere Ins Co	\$17,550,824	0.41%	\$345,340,282	\$222,746,977	\$122,593,305
13935	Federated Mut Ins Co	\$16,809,981	0.39%	\$4,523,516,730	\$2,005,260,489	\$2,518,256,241
20699	Ace Prop & Cas Ins Co	\$16,753,395	0.39%	\$7,214,081,859	\$5,293,609,609	\$1,920,472,250
33049	State Volunteer Mut Ins Co	\$16,573,355	0.38%	\$1,186,191,611	\$689,536,806	\$496,654,805
39039	Rural Comm Ins Co	\$16,136,812	0.37%	\$5,245,222,646	\$4,645,392,087	\$599,830,559
20095	Bituminous Cas Corp	\$15,876,429	0.37%	\$788,370,973	\$498,190,116	\$290,180,858

Property and Casualty (Cont.)

NAIC	Company Name	AR Premium	Market Share	Assets	Liabilities	Capital & Surplus
21407	Emcasco Ins Co	\$15,704,411	0.36%	\$407,758,646	\$292,967,686	\$114,790,959
41840	Allmerica Fin Benefit Ins Co	\$15,700,553	0.36%	\$32,515,381	\$11,096	\$32,504,285
13021	United Fire & Cas Co	\$14,529,249	0.34%	\$1,558,730,375	\$892,958,189	\$665,772,186
22063	Government Employees Ins Co	\$14,352,784	0.33%	\$25,778,845,243	\$13,689,078,999	\$12,089,766,244
22292	Hanover Ins Co	\$14,299,523	0.33%	\$6,047,143,269	\$4,217,454,706	\$1,829,688,563
12548	American Agri Business Ins Co	\$14,261,809	0.33%	\$729,715,236	\$703,102,777	\$26,612,459
10111	American Bankers Ins Co Of FL	\$13,974,780	0.32%	\$1,844,859,238	\$1,302,742,564	\$542,116,674
13528	Brotherhood Mut Ins Co	\$13,959,977	0.32%	\$443,294,258	\$265,105,262	\$178,188,996
28401	American Natl Prop & Cas Co	\$13,746,979	0.32%	\$1,155,566,510	\$618,074,705	\$537,491,805
33600	LM Ins Corp	\$13,472,085	0.31%	\$113,443,635	\$2,344,528	\$111,099,107
27626	Firstcomp Ins Co	\$13,467,650	0.31%	\$293,406,229	\$177,809,346	\$115,596,883
40649	Economy Premier Assur Co	\$13,411,965	0.31%	\$86,418,699	\$42,210,327	\$44,208,372
23469	American Modern Home Ins Co	\$13,356,721	0.31%	\$1,256,384,755	\$882,747,517	\$373,637,238
27120	Trumbull Ins Co	\$13,340,428	0.31%	\$210,903,499	\$117,860,138	\$93,043,361
26298	Metropolitan Prop & Cas Ins Co	\$13,113,625	0.30%	\$5,499,670,294	\$3,274,808,958	\$2,224,861,336
10335	Bridgefield Cas Ins Co	\$12,340,318	0.29%	\$79,496,549	\$32,344,047	\$47,152,502
23841	New Hampshire Ins Co	\$12,028,317	0.28%	\$3,271,396,563	\$2,539,971,117	\$731,425,446
11150	Arch Ins Co	\$11,634,162	0.27%	\$2,840,864,274	\$2,104,236,877	\$736,627,397
15725	Cameron Mut Ins Co	\$11,553,290	0.27%	\$79,329,019	\$44,489,501	\$34,839,518
25844	Union Ins Co	\$11,475,292	0.27%	\$104,795,626	\$76,566,290	\$28,229,336
27235	Auto Club Family Ins Co	\$11,352,270	0.26%	\$95,350,278	\$54,863,424	\$40,486,854
17647	United Home Ins Co	\$11,281,911	0.26%	\$20,178,949	\$13,726,945	\$6,452,004
23736	Direct Natl Ins Co	\$11,233,869	0.26%	\$16,554,586	\$9,753,057	\$6,801,529
34690	Property & Cas Ins Co Of Hartford	\$11,040,675	0.26%	\$222,986,751	\$117,874,342	\$105,112,409
11371	Great West Cas Co	\$10,995,811	0.25%	\$1,736,576,969	\$1,189,691,896	\$546,885,073
32700	Owners Ins Co	\$10,821,121	0.25%	\$3,510,812,381	\$2,218,745,550	\$1,292,066,831
10251	American Underwriters Ins Co	\$10,462,806	0.24%	\$6,926,243	\$1,950,928	\$4,975,315
37273	Axis Ins Co	\$10,324,259	0.24%	\$1,366,013,693	\$839,789,799	\$526,223,894
13897	Farmers Mut Hail Ins Co Of IA	\$10,055,501	0.23%	\$832,791,704	\$474,458,365	\$358,333,339
12810	MDOW Ins Co	\$9,853,354	0.23%	\$8,263,389	\$3,258,136	\$5,005,253
37478	Hartford Ins Co Of The Midwest	\$9,832,707	0.23%	\$550,079,553	\$117,977,551	\$432,102,002
25615	Charter Oak Fire Ins Co	\$9,511,797	0.22%	\$916,865,957	\$670,950,703	\$245,915,254
34312	Producers Agriculture Ins Co	\$9,405,771	0.22%	\$144,411,271	\$91,648,689	\$52,762,582
24538	Republic Underwriters Ins Co	\$9,250,372	0.21%	\$678,573,889	\$432,426,292	\$246,147,597
31895	American Interstate Ins Co	\$9,182,953	0.21%	\$1,093,745,218	\$739,452,480	\$354,292,738
39217	QBE Ins Corp	\$8,775,366	0.20%	\$2,138,231,351	\$1,459,487,208	\$678,744,144
21253	Garrison Prop & Cas Ins Co	\$8,760,785	0.20%	\$1,255,480,389	\$749,039,418	\$506,440,971
31325	Acadia Ins Co	\$8,732,412	0.20%	\$140,734,320	\$90,263,245	\$50,471,076
25011	Wesco Ins Co	\$8,477,386	0.20%	\$804,133,417	\$637,320,516	\$166,812,901
18767	Church Mut Ins Co	\$8,437,182	0.19%	\$1,357,735,735	\$884,546,351	\$473,189,385
11000	Sentinel Ins Co Ltd	\$8,377,030	0.19%	\$205,224,645	\$70,752,456	\$134,472,189
24147	Old Republic Ins Co	\$8,317,118	0.19%	\$2,472,679,037	\$1,534,854,613	\$937,824,424
28223	Nationwide Agribusiness Ins Co	\$8,236,876	0.19%	\$377,133,601	\$310,432,163	\$66,701,438
11839	Circle Star Ins Co RRG	\$8,191,421	0.19%	\$2,522,593	\$1,055,289	\$1,467,304
15873	United Guar Residential Ins Co	\$8,172,066	0.19%	\$3,059,260,763	\$1,593,547,410	\$1,465,713,353
36684	Riverport Ins Co	\$7,832,462	0.18%	\$101,486,856	\$62,231,542	\$39,255,314
24015	Northland Ins Co	\$7,821,748	0.18%	\$1,157,606,508	\$624,315,817	\$533,290,691
19682	Hartford Fire In Co	\$7,798,296	0.18%	\$25,684,838,414	\$11,603,425,503	\$14,081,412,911
19046	Travelers Cas Ins Co Of Amer	\$7,694,458	0.18%	\$1,893,078,083	\$1,343,317,536	\$549,760,547
34495	Doctors Co An Interins Exch	\$7,573,926	0.17%	\$3,313,221,939	\$1,581,532,888	\$1,731,689,051
25240	NAU Country Ins Co	\$7,436,588	0.17%	\$1,300,080,790	\$1,025,290,164	\$274,790,626
11991	National Cas Co	\$7,368,079	0.17%	\$280,886,646	\$155,012,065	\$125,874,581
18236	Agents Mut Ins Co	\$7,289,708	0.17%	\$2,714,838	\$1,473,656	\$1,241,182
10804	Continental Western Ins Co	\$7,274,509	0.17%	\$200,330,524	\$114,874,620	\$85,455,904

Property and Casualty (Cont.)

NAIC	Company Name	AR Premium	Market Share	Assets	Liabilities	Capital & Surplus
37257	Praetorian Ins Co	\$7,175,990	0.17%	\$971,913,137	\$723,550,227	\$248,362,910
39845	Westport Ins Corp	\$7,175,155	0.17%	\$5,454,118,515	\$3,684,714,544	\$1,769,403,971
19070	Standard Fire Ins Co	\$7,161,899	0.17%	\$3,605,293,999	\$2,370,513,049	\$1,234,780,950
42404	Liberty Ins Corp	\$6,982,321	0.16%	\$218,583,178	\$3,160,972	\$215,422,206
10783	Cornerstone Natl Ins Co	\$6,783,256	0.16%	\$39,737,915	\$28,998,846	\$10,739,069
42978	American Security Ins Co	\$6,607,463	0.15%	\$2,077,955,537	\$1,337,111,054	\$740,844,483
34789	21st Century Centennial Ins Co	\$6,588,749	0.15%	\$555,757,400	\$17,328,878	\$538,428,522
42986	Standard Guar Ins Co	\$6,506,501	0.15%	\$476,835,420	\$325,960,553	\$150,874,867
10855	Cypress Ins Co	\$6,459,424	0.15%	\$1,140,153,517	\$875,719,793	\$264,433,724
44369	Imperial Fire & Cas Ins Co	\$6,425,730	0.15%	\$109,241,610	\$65,451,326	\$43,790,284
38318	Starr Ind & Liab Co	\$6,422,701	0.15%	\$3,467,356,543	\$1,602,249,380	\$1,865,107,163
19410	Commerce & Industry Ins Co	\$6,240,273	0.14%	\$7,339,225,480	\$5,433,644,641	\$1,905,580,839
28452	Republic Mortgage Ins Co	\$6,194,155	0.14%	\$1,932,845,070	\$1,563,456,095	\$369,388,975
10510	Carolina Cas Ins Co	\$6,171,772	0.14%	\$178,402,247	\$83,111,548	\$95,290,700
29459	Twin City Fire Ins Co Co	\$6,103,175	0.14%	\$641,747,713	\$353,605,506	\$288,142,207
12416	Protective Ins Co	\$6,071,286	0.14%	\$741,136,735	\$365,312,349	\$375,824,386
20087	National Ind Co	\$6,038,348	0.14%	\$151,911,726,481	\$54,685,674,659	\$97,226,051,822
35319	United Automobile Ins Co	\$5,921,760	0.14%	\$340,557,830	\$260,112,614	\$80,445,217
25623	Phoenix Ins Co	\$5,866,738	0.14%	\$4,009,352,279	\$2,430,210,785	\$1,579,141,493
30210	Esurance Prop & Cas Ins Co	\$5,806,568	0.13%	\$91,140,705	\$62,252,809	\$28,887,896
14974	Pennsylvania Lumbermens Mut Ins	\$5,747,985	0.13%	\$419,154,424	\$303,214,064	\$115,940,360
23450	American Family Home Ins Co	\$5,713,123	0.13%	\$530,030,905	\$380,246,091	\$149,784,814
10014	Affiliated Fm Ins Co	\$5,690,432	0.13%	\$2,327,144,249	\$1,065,073,056	\$1,262,071,193
20478	National Fire Ins Co Of Hartford	\$5,674,919	0.13%	\$116,254,520	\$78,631	\$116,175,889
25682	Travelers Ind Co Of CT	\$5,614,321	0.13%	\$1,082,359,603	\$716,787,951	\$365,571,652
20508	Valley Forge Ins Co	\$5,602,448	0.13%	\$70,964,063	\$37,900	\$70,926,163
28746	Equity Ins Co	\$5,559,426	0.13%	\$77,330,696	\$47,543,332	\$29,787,364
26247	American Guar & Liab Ins	\$5,509,165	0.13%	\$264,773,924	\$88,244,359	\$176,529,565
25666	Travelers Ind Co Of Amer	\$5,387,605	0.12%	\$628,000,922	\$433,490,623	\$194,510,299
23361	Shelter Gen Ins Co	\$5,344,731	0.12%	\$162,189,252	\$82,685,132	\$79,504,120
19216	Southern Ins Co	\$5,299,964	0.12%	\$48,194,653	\$17,982,818	\$30,211,835
13137	Viking Ins Co Of WI	\$5,286,034	0.12%	\$381,328,273	\$203,151,816	\$178,176,457
16047	Southern Pioneer Prop & Cas Ins Co	\$5,271,893	0.12%	\$27,459,118	\$12,814,928	\$14,644,190
19615	American Reliable Ins Co	\$5,237,143	0.12%	\$271,183,878	\$192,030,106	\$79,153,772
15105	Safety Natl Cas Corp	\$5,200,886	0.12%	\$4,183,550,016	\$3,029,703,656	\$1,153,846,360
20427	American Cas Co Of Reading PA	\$5,176,310	0.12%	\$140,787,315	\$36,104	\$140,751,211
40142	American Zurich Ins Co	\$5,106,569	0.12%	\$234,186,348	\$80,884,390	\$153,301,958
21709	Truck Ins Exch	\$5,059,472	0.12%	\$1,933,396,090	\$1,369,922,187	\$563,473,903
19720	American Alt Ins Corp	\$5,032,930	0.12%	\$452,241,288	\$290,492,926	\$161,748,363
21113	United States Fire Ins Co	\$4,951,914	0.11%	\$3,154,524,880	\$2,342,427,670	\$812,097,210
34339	Metropolitan Grp Prop & Cas Ins Co	\$4,949,574	0.11%	\$582,487,524	\$237,590,971	\$344,896,553
39306	Fidelity & Deposit Co Of MD	\$4,923,721	0.11%	\$219,506,772	\$50,547,235	\$168,959,537
11398	Guarantee Ins Co	\$4,740,509	0.11%	\$393,968,902	\$336,248,806	\$57,720,096
33391	ProAssurance Ind Co Inc	\$4,678,009	0.11%	\$1,718,415,145	\$964,731,590	\$753,683,555
10204	Consumers Ins Usa Inc	\$4,663,818	0.11%	\$54,957,308	\$34,906,297	\$20,051,011
22314	RSUI Ind Co	\$4,643,296	0.11%	\$3,323,214,161	\$1,830,828,677	\$1,492,385,484
11118	Federated Rural Electric Ins Exch	\$4,619,840	0.11%	\$458,795,940	\$305,460,406	\$153,335,534
37885	XL Specialty Ins Co	\$4,589,271	0.11%	\$440,571,430	\$282,228,387	\$158,343,043
38970	Markel Ins Co	\$4,573,953	0.11%	\$1,225,693,994	\$878,307,917	\$347,386,077
33790	Radian Guar Inc	\$4,556,132	0.11%	\$3,657,543,100	\$2,339,779,169	\$1,317,763,931
21687	Mid Century Ins Co	\$4,552,190	0.11%	\$3,714,700,964	\$2,793,436,946	\$921,264,018
26344	Great Amer Assur Co	\$4,535,967	0.10%	\$18,911,673	\$800	\$18,910,873
32620	National Interstate Ins Co	\$4,491,106	0.10%	\$1,054,079,940	\$770,660,825	\$283,419,115
41181	Universal Underwriters Ins Co	\$4,441,171	0.10%	\$386,182,512	\$50,057,013	\$336,125,500

Property and Casualty (Cont.)

NAIC	Company Name	AR Premium	Market Share	Assets	Liabilities	Capital & Surplus
14982	Penn Millers Ins Co	\$4,426,536	0.10%	\$160,626,891	\$78,612,492	\$82,014,399
10464	Canal Ins Co	\$4,426,354	0.10%	\$848,967,373	\$404,153,495	\$444,813,878
21180	Sentry Select Ins Co	\$4,397,853	0.10%	\$641,304,426	\$413,826,220	\$227,478,206
28535	Triangle Ins Co Inc	\$4,392,121	0.10%	\$59,900,681	\$36,743,744	\$23,156,937
29858	Mortgage Guar Ins Corp	\$4,389,650	0.10%	\$4,406,235,074	\$2,885,594,908	\$1,520,640,166
15130	Encompass Ind Co	\$4,373,724	0.10%	\$26,230,561	\$1,274,395	\$24,956,166
13838	Farmland Mut Ins Co	\$4,345,467	0.10%	\$485,219,229	\$319,194,112	\$166,025,117
29599	US Specialty Ins Co	\$4,321,429	0.10%	\$1,928,589,483	\$1,348,281,564	\$580,307,919
23965	Norfolk & Dedham Mut Fire Ins Co	\$4,292,769	0.10%	\$331,298,092	\$152,669,932	\$178,628,160
37907	Allstate Vehicle & Prop Ins Co	\$4,214,561	0.10%	\$23,552,937	\$254,025	\$23,298,911
11843	Medical Protective Co	\$4,212,754	0.10%	\$3,286,341,352	\$1,880,620,797	\$1,405,720,555
36064	Hanover Amer Ins Co	\$4,152,853	0.10%	\$28,554,502	\$28,694	\$28,525,808
24767	St Paul Fire & Marine Ins Co	\$4,076,666	0.09%	\$18,566,316,320	\$12,651,619,036	\$5,914,697,284
21423	Union Ins Co Of Providence	\$4,020,092	0.09%	\$107,298,935	\$53,977,784	\$53,321,151
20397	Vigilant Ins Co	\$4,000,378	0.09%	\$467,945,670	\$203,062,939	\$264,882,731
36447	LM Gen Ins Co	\$3,989,443	0.09%	\$10,330,194	\$726,873	\$9,603,321
23280	The Cincinnati Ind Co	\$3,919,068	0.09%	\$110,714,383	\$28,709,604	\$82,004,779
29424	Hartford Cas Ins Co	\$3,824,770	0.09%	\$2,206,987,999	\$1,301,195,477	\$905,792,522
20052	National Liab & Fire Ins Co	\$3,799,766	0.09%	\$1,836,127,179	\$937,172,355	\$898,954,824
13056	RLI Ins Co	\$3,706,249	0.09%	\$1,679,437,985	\$820,216,660	\$859,221,325
13714	Pharmacists Mut Ins Co	\$3,702,431	0.09%	\$247,541,204	\$158,926,551	\$88,614,653
37613	Farmers Union Mut Ins Co	\$3,698,579	0.09%	\$4,081,466	\$2,165,807	\$1,915,659
35289	Continental Ins Co	\$3,688,387	0.09%	\$2,345,533,197	\$978,673,206	\$1,366,859,991
18023	Star Ins Co	\$3,655,277	0.08%	\$1,000,349,480	\$690,758,321	\$309,591,160
18295	Lafayette Ins Co	\$3,644,038	0.08%	\$166,707,075	\$93,417,814	\$73,289,261
24082	Ohio Security Ins Co	\$3,619,852	0.08%	\$78,244,676	\$63,259,337	\$14,985,339
38458	Genworth Mortgage Ins Corp	\$3,597,653	0.08%	\$2,373,472,834	\$1,413,186,688	\$960,286,146
20494	Transportation Ins Co	\$3,531,554	0.08%	\$80,329,992	\$87,490	\$80,242,502
23809	Granite State Ins Co	\$3,521,644	0.08%	\$43,527,614	\$3,652,854	\$39,874,760
24554	XL Ins Amer Inc	\$3,491,144	0.08%	\$734,200,582	\$487,365,509	\$246,835,073
19038	Travelers Cas & Surety Co	\$3,469,743	0.08%	\$16,464,401,449	\$9,905,754,944	\$6,558,646,505
30104	Hartford Underwriters Ins Co	\$3,468,100	0.08%	\$1,561,290,500	\$949,900,497	\$611,390,002
38652	American Modern Select Ins Co	\$3,464,106	0.08%	\$276,726,912	\$236,570,332	\$40,156,580
35300	Allianz Global Risks US Ins Co	\$3,425,758	0.08%	\$3,176,922,160	\$2,309,633,590	\$867,288,570
19658	Bristol W Ins Co	\$3,379,708	0.08%	\$120,817,586	\$77,201,336	\$43,616,250
36625	Old Reliable Cas Co	\$3,375,191	0.08%	\$9,787,680	\$1,093,192	\$8,694,488
28665	Cincinnati Cas Co	\$3,351,018	0.08%	\$361,054,298	\$44,528,070	\$316,526,228
13188	Western Surety Co	\$3,339,920	0.08%	\$1,856,351,527	\$650,737,354	\$1,205,614,173
23396	Amerisure Mut Ins Co	\$3,321,755	0.08%	\$1,981,826,498	\$1,178,060,450	\$803,766,048
42749	Traders Ins Co	\$3,320,092	0.08%	\$35,878,029	\$24,964,492	\$10,913,538
20613	Sparta Ins Co	\$3,317,008	0.08%	\$542,637,020	\$365,537,229	\$177,099,791
13565	Arkansas Mut Ins Co	\$3,283,930	0.08%	\$6,203,688	\$3,430,885	\$2,772,804
19917	Liberty Ins Underwriters Inc	\$3,282,902	0.08%	\$173,773,971	\$53,930,881	\$119,843,090
29068	IDS Prop Cas Ins Co	\$3,230,470	0.07%	\$1,268,348,797	\$737,635,112	\$530,713,685
13634	Essent Guar Inc	\$3,230,470	0.07%	\$546,787,934	\$200,381,588	\$346,406,346
10723	Nationwide Assur Co	\$3,211,539	0.07%	\$142,815,444	\$83,748,181	\$59,067,263
16608	New York Marine & Gen Ins Co	\$3,046,539	0.07%	\$891,736,605	\$651,633,473	\$240,103,132
27154	Atlantic Specialty Ins Co	\$3,017,463	0.07%	\$2,258,814,096	\$1,593,006,690	\$665,807,406
37869	Pre Paid Legal Cas Inc	\$2,993,975	0.07%	\$21,536,804	\$3,548,896	\$17,987,908
38245	BCS Ins Co	\$2,991,944	0.07%	\$267,891,365	\$115,023,222	\$152,868,143
19062	Automobile Ins Co Of Hartford CT	\$2,902,965	0.07%	\$1,002,240,810	\$684,939,978	\$317,300,832
18333	Peerless Ind Ins Co	\$2,874,363	0.07%	\$207,806,082	\$31,631,057	\$176,175,025
22306	Massachusetts Bay Ins Co	\$2,838,580	0.07%	\$61,150,643	\$4,770	\$61,145,873
11255	Caterpillar Ins Co	\$2,830,021	0.07%	\$639,627,777	\$396,202,509	\$243,425,268

Property and Casualty (Cont.)

NAIC	Company Name	AR Premium	Market Share	Assets	Liabilities	Capital & Surplus
10166	Accident Fund Ins Co of Amer	\$2,818,185	0.07%	\$2,257,698,732	\$1,573,646,577	\$684,052,155
41343	HDI Gerling Amer Ins Co	\$2,790,277	0.06%	\$313,667,537	\$180,943,992	\$132,723,545
19402	AIG Prop Cas Co	\$2,787,059	0.06%	\$3,656,549,580	\$2,490,221,261	\$1,166,328,318
19429	Insurance Co Of The State Of PA	\$2,774,534	0.06%	\$3,299,767,027	\$2,554,571,179	\$745,195,848
43494	American Hallmark Ins Co Of TX	\$2,765,644	0.06%	\$286,813,242	\$171,529,531	\$115,283,711
42757	Agri Gen Ins Co	\$2,741,399	0.06%	\$254,099,332	\$5,080,093	\$249,019,239
12114	National Security Fire & Cas Co	\$2,729,651	0.06%	\$64,700,471	\$38,383,096	\$26,317,374
10120	Everest Natl Ins Co	\$2,646,795	0.06%	\$640,416,006	\$533,105,626	\$107,310,380
16705	Dealers Assur Co	\$2,629,270	0.06%	\$80,714,715	\$29,936,639	\$50,778,076
21458	Employers Ins of Wausau	\$2,626,521	0.06%	\$5,599,777,330	\$4,316,041,606	\$1,283,735,724
11042	Stonetrust Commercial Ins Co	\$2,601,628	0.06%	\$105,168,711	\$77,138,236	\$28,030,475
22012	Motors Ins Corp	\$2,588,354	0.06%	\$2,604,963,121	\$1,509,331,824	\$1,095,631,298
40827	Virginia Surety Co Inc	\$2,580,260	0.06%	\$1,007,790,342	\$698,576,775	\$309,213,567
24074	Ohio Cas Ins Co	\$2,536,469	0.06%	\$5,639,598,048	\$4,255,479,567	\$1,384,118,481
12304	Accident Fund Gen Ins Co	\$2,535,869	0.06%	\$233,100,396	\$194,867,742	\$38,232,654
40045	Starnet Ins Co	\$2,510,633	0.06%	\$202,673,837	\$93,232,367	\$109,441,469
11223	Safeway Ins Co Of AL	\$2,467,338	0.06%	\$59,772,117	\$29,837,570	\$29,934,547
21857	American Ins Co	\$2,442,030	0.06%	\$325,526,841	\$41,986,603	\$283,540,238
11800	Foremost Prop & Cas Ins Co	\$2,372,401	0.05%	\$64,923,263	\$47,568,970	\$17,354,293
26433	Harco Natl Ins Co	\$2,355,358	0.05%	\$346,914,438	\$177,750,165	\$169,164,273
43575	Indemnity Ins Co Of North Amer	\$2,329,330	0.05%	\$361,371,690	\$256,034,441	\$105,337,249
20044	Berkshire Hathaway Homestate Ins Co	\$2,281,286	0.05%	\$1,587,489,616	\$623,721,236	\$963,768,380
24988	Sentry Ins A Mut Co	\$2,267,847	0.05%	\$6,631,964,314	\$2,556,630,322	\$4,075,333,992
28304	Federated Serv Ins Co	\$2,254,582	0.05%	\$405,995,933	\$221,849,421	\$184,146,512
20303	Great Northern Ins Co	\$2,227,188	0.05%	\$1,653,109,375	\$1,174,271,553	\$478,837,822
23612	Midwest Employers Cas Co	\$2,212,106	0.05%	\$147,541,921	\$53,963,072	\$93,578,849
22837	AGCS Marine Ins Co	\$2,205,037	0.05%	\$873,018,645	\$714,858,900	\$158,159,745
24414	General Cas Co Of WI	\$2,194,018	0.05%	\$866,565,714	\$553,858,026	\$312,707,688
38911	Berkley Natl Ins Co	\$2,176,654	0.05%	\$74,801,014	\$25,398,627	\$49,402,387
24171	Netherlands Ins Co The	\$2,171,574	0.05%	\$126,737,377	\$43,469,659	\$83,267,718
24260	Progressive Cas Ins Co	\$2,151,675	0.05%	\$5,772,433,590	\$4,229,323,289	\$1,543,110,301
33588	First Liberty Ins Corp	\$2,151,436	0.05%	\$22,880,157	\$721,391	\$22,158,766
10030	Westchester Fire Ins Co	\$2,147,918	0.05%	\$2,056,086,204	\$1,149,515,330	\$906,570,874
36137	Travelers Commercial Ins Co	\$2,145,564	0.05%	\$343,055,645	\$249,524,847	\$93,530,798
19640	Columbia Natl Ins Co	\$2,115,352	0.05%	\$94,597,136	\$58,789,359	\$35,807,777
12696	America First Ins Co	\$2,031,649	0.05%	\$17,761,898	\$4,112,998	\$13,648,900
23248	Occidental Fire & Cas Co Of NC	\$2,008,120	0.05%	\$420,433,129	\$265,435,424	\$154,997,705
23663	National Amer Ins Co	\$1,997,230	0.05%	\$172,994,318	\$112,083,318	\$60,911,000
42376	Technology Ins Co Inc	\$1,968,147	0.05%	\$1,132,602,230	\$896,074,644	\$236,527,586
20109	Bituminous Fire & Marine Ins Co	\$1,959,380	0.05%	\$464,979,344	\$308,026,123	\$156,953,222
19887	Trinity Universal Ins Co	\$1,954,969	0.05%	\$2,380,943,416	\$1,396,863,781	\$984,079,635
26310	Granite Re Inc	\$1,933,824	0.04%	\$34,400,088	\$17,377,916	\$17,022,172
10847	Cumis Ins Society Inc	\$1,926,951	0.04%	\$1,637,594,165	\$1,015,857,066	\$621,737,099
21873	Firemans Fund Ins Co	\$1,925,076	0.04%	\$9,843,737,123	\$7,365,084,683	\$2,478,652,440
42803	Guideone Elite Ins Co	\$1,912,473	0.04%	\$26,883,342	\$6,078,843	\$20,804,499
32220	21st Century N Amer Ins Co	\$1,904,918	0.04%	\$571,988,257	\$39,408,466	\$532,579,791
27251	PMI Mortgage Ins Co	\$1,886,922	0.04%	\$1,894,357,445	\$3,443,313,440	\$(1,548,955,995)
19488	Amerisure Ins Co	\$1,884,225	0.04%	\$721,576,876	\$505,912,867	\$215,664,009
29580	Berkley Regional Ins Co	\$1,864,282	0.04%	\$681,215,263	\$38,034,793	\$643,180,469
23728	National Gen Ins Co	\$1,851,853	0.04%	\$55,608,815	\$29,808,966	\$25,799,849
10023	Alliance Of Nonprofits For Ins RRG	\$1,847,882	0.04%	\$64,353,270	\$37,278,291	\$27,074,979
19356	Maryland Cas Co	\$1,817,385	0.04%	\$173,116,699	\$24,105,395	\$149,011,305
22136	Great Amer Ins Co of NY	\$1,806,285	0.04%	\$46,130,228	\$3,850	\$46,126,378
19518	Catlin Ins Co	\$1,772,732	0.04%	\$190,914,938	\$126,695,427	\$64,219,511

Property and Casualty (Cont.)

NAIC	Company Name	AR Premium	Market Share	Assets	Liabilities	Capital & Surplus
11630	Jefferson Ins Co	\$1,745,039	0.04%	\$59,522,126	\$20,874,765	\$38,647,361
20516	Euler Hermes N Amer Ins Co	\$1,691,759	0.04%	\$385,237,068	\$247,674,160	\$137,562,908
40460	Sagamore Ins Co	\$1,671,472	0.04%	\$157,153,559	\$33,449,503	\$123,704,056
26921	Everest Reins Co	\$1,652,764	0.04%	\$9,288,410,914	\$6,474,074,024	\$2,814,336,890
12300	American Contractors Ins Co RRG	\$1,636,004	0.04%	\$14,708,548	\$7,132,459	\$7,576,089
42307	Navigators Ins Co	\$1,616,338	0.04%	\$2,215,012,757	\$1,410,940,048	\$804,072,709
23418	Mid Continent Cas Co	\$1,613,521	0.04%	\$459,067,499	\$327,097,860	\$131,969,639
22357	Hartford Accident & Ind Co	\$1,602,224	0.04%	\$11,122,420,384	\$7,850,909,068	\$3,271,511,316
11004	Alfa Specialty Ins Corp	\$1,584,708	0.04%	\$43,444,206	\$24,873,052	\$18,571,154
32387	Star Cas Ins Co	\$1,571,045	0.04%	\$19,150,220	\$10,292,687	\$8,857,533
26832	Great Amer Alliance Ins Co	\$1,569,432	0.04%	\$31,487,619	\$8,138	\$31,479,482
10349	Acceptance Cas Ins Co	\$1,554,861	0.04%	\$69,464,896	\$19,705,809	\$49,759,087
21881	National Surety Corp	\$1,527,796	0.04%	\$160,271,143	\$33,575,322	\$126,695,821
11126	Sompo Japan Ins Co of Amer	\$1,513,733	0.03%	\$936,303,388	\$455,236,190	\$481,067,199
14206	Holyoke Mut Ins Co In Salem	\$1,479,735	0.03%	\$224,334,698	\$134,450,465	\$89,884,233
10895	Midwest Ins Co	\$1,476,699	0.03%	\$77,662,935	\$54,464,431	\$23,198,504
13927	Homesite Ins Co Of The Midwest	\$1,475,315	0.03%	\$314,580,279	\$219,179,060	\$95,401,219
23108	Lumbermens Underwriting Alliance	\$1,438,607	0.03%	\$295,871,711	\$245,290,855	\$50,580,856
42617	MAG Mut Ins Co	\$1,434,299	0.03%	\$1,609,939,340	\$869,592,612	\$740,346,728
18031	Topa Ins Co	\$1,427,103	0.03%	\$186,079,131	\$110,537,660	\$75,541,471
19879	Security Natl Ins Co	\$1,380,086	0.03%	\$429,014,074	\$349,233,648	\$79,780,426
12831	State Natl Ins Co Inc	\$1,361,915	0.03%	\$218,790,848	\$63,224,670	\$155,566,178
19976	Amica Mut Ins Co	\$1,356,622	0.03%	\$4,855,212,392	\$2,205,511,865	\$2,649,700,527
43656	Louisiana Med Mut Ins Co	\$1,352,554	0.03%	\$411,933,260	\$217,916,468	\$194,016,792
26182	Harleysville Worcester Ins Co	\$1,339,333	0.03%	\$327,585,998	\$92,023,825	\$235,562,173
10784	Maxum Cas Ins Co	\$1,336,774	0.03%	\$54,581,773	\$38,324,482	\$16,257,291
12870	Sentrui Cas Co	\$1,326,215	0.03%	\$106,522,435	\$65,521,134	\$41,001,301
28932	Markel Amer Ins Co	\$1,323,263	0.03%	\$441,097,769	\$305,305,931	\$135,791,838
21326	Empire Fire & Marine Ins Co	\$1,307,445	0.03%	\$90,777,902	\$42,615,415	\$48,162,487
14354	Jewelers Mut Ins Co	\$1,298,261	0.03%	\$304,935,604	\$122,352,213	\$182,583,391
10718	Retailers Cas Ins Co	\$1,262,495	0.03%	\$68,065,509	\$38,797,140	\$29,268,369
23582	Harleysville Ins Co	\$1,220,371	0.03%	\$104,378,158	\$69,647,095	\$34,731,063
42994	Progressive Classic Ins Co	\$1,218,470	0.03%	\$322,819,487	\$230,913,774	\$91,905,713
11523	Wright Natl Flood Ins Co	\$1,208,810	0.03%	\$27,592,131	\$12,893,375	\$14,698,756
26077	Lancer Ins Co	\$1,203,742	0.03%	\$517,518,846	\$345,784,210	\$171,734,636
10945	Tokio Marine Amer Ins Co	\$1,194,109	0.03%	\$1,383,525,649	\$869,152,092	\$514,373,557
21164	Dairyland Ins Co	\$1,187,590	0.03%	\$1,163,189,493	\$691,525,167	\$471,664,326
36897	Manufacturers Alliance Ins Co	\$1,184,072	0.03%	\$175,449,263	\$108,739,424	\$66,709,839
22322	Greenwich Ins Co	\$1,183,961	0.03%	\$1,053,324,072	\$636,766,892	\$416,557,180
26492	Courtesy Ins Co	\$1,173,182	0.03%	\$686,487,618	\$378,042,921	\$308,444,697
34037	Hallmark Ins Co	\$1,170,333	0.03%	\$206,581,680	\$131,062,019	\$75,519,661
27855	Zurich Amer Ins Co Of IL	\$1,148,580	0.03%	\$49,354,906	\$15,336,181	\$34,018,725
10639	Attorneys Liab Assur Society Inc RRG	\$1,137,455	0.03%	\$239,131,488	\$158,812,284	\$80,319,204
26042	Wausau Underwriters Ins Co	\$1,124,787	0.03%	\$99,744,310	\$38,612,344	\$61,131,966
34274	Central States Ind Co Of Omaha	\$1,122,600	0.03%	\$412,274,281	\$66,271,300	\$346,002,981
24198	Peerless Ins Co	\$1,120,281	0.03%	\$13,621,186,110	\$10,834,743,223	\$2,786,442,887
24112	Westfield Ins Co	\$1,117,407	0.03%	\$2,450,520,897	\$1,459,330,676	\$991,190,221
35696	Harleysville Preferred Ins Co	\$1,089,617	0.03%	\$285,993,855	\$90,120,228	\$195,873,627
40134	Castlepoint Natl Ins Co	\$1,087,196	0.03%	\$468,500,604	\$437,996,926	\$30,503,678
41483	Farmington Cas Co	\$1,072,666	0.02%	\$1,000,645,073	\$713,216,233	\$287,428,840
10952	Stonebridge Cas Ins Co	\$1,065,504	0.02%	\$324,587,164	\$206,465,588	\$118,121,576
21105	North River Ins Co	\$1,056,656	0.02%	\$938,192,988	\$675,113,095	\$263,079,893
10052	Chubb Natl Ins Co	\$1,054,952	0.02%	\$280,441,488	\$151,935,393	\$128,506,095
40843	Universal Underwriters Of TX Ins	\$1,041,371	0.02%	\$12,599,676	\$2,759,964	\$9,839,712

Property and Casualty (Cont.)

NAIC	Company Name	AR Premium	Market Share	Assets	Liabilities	Capital & Surplus
12777	Chubb Ind Ins Co	\$1,037,413	0.02%	\$327,428,915	\$200,505,696	\$126,923,219
41513	Foremost Signature Ins Co	\$1,009,839	0.02%	\$66,534,781	\$46,815,897	\$19,718,884
19801	Argonaut Ins Co	\$1,002,618	0.02%	\$1,308,888,649	\$899,525,893	\$409,362,756
42552	Nova Cas Co	\$992,624	0.02%	\$95,631,438	\$5,088,167	\$90,543,271
19305	Assurance Co Of Amer	\$989,147	0.02%	\$29,332,857	\$9,499,912	\$19,832,945
10708	Lemic Ins Co	\$972,172	0.02%	\$51,637,731	\$53,718,298	\$(2,080,567)
14559	Guideone Specialty Mut Ins Co	\$967,783	0.02%	\$465,256,795	\$371,906,164	\$93,350,631
20117	California Cas Ind Exch	\$962,871	0.02%	\$571,834,546	\$235,378,232	\$336,456,315
44725	1st Auto & Cas Ins Co	\$960,067	0.02%	\$29,135,263	\$17,276,100	\$11,859,163
10690	Allied World Natl Assur Co	\$951,207	0.02%	\$274,699,013	\$152,269,703	\$122,429,310
38601	MIC Prop & Cas Ins Corp	\$946,237	0.02%	\$90,120,236	\$36,299,698	\$53,820,538
19828	Argonaut Midwest Ins Co	\$934,258	0.02%	\$26,055,263	\$9,647,250	\$16,408,014
12157	Companion Prop & Cas Ins Co	\$931,966	0.02%	\$998,571,135	\$747,733,400	\$250,837,735
19380	American Home Assur Co	\$929,858	0.02%	\$23,671,051,041	\$18,579,364,951	\$5,091,686,090
16578	Stillwater Prop & Cas Ins Co	\$912,245	0.02%	\$119,534,206	\$7,163,138	\$112,371,068
10922	Insuremax Ins Co	\$908,237	0.02%	\$16,487,767	\$10,912,474	\$5,575,293
37915	Essentia Ins Co	\$899,581	0.02%	\$73,809,194	\$47,779,194	\$26,030,000
10701	Bridgefield Employers Ins Co	\$898,960	0.02%	\$146,980,503	\$32,792,569	\$114,187,934
44300	Tower Ins Co Of NY	\$897,656	0.02%	\$543,740,374	\$407,304,667	\$136,435,707
22756	Horace Mann Prop & Cas Ins Co	\$893,009	0.02%	\$272,402,309	\$157,276,401	\$115,125,908
19631	American Road Ins Co	\$890,940	0.02%	\$564,232,560	\$288,224,823	\$276,007,737
10071	Encompass Ins Co Of Amer	\$886,343	0.02%	\$21,710,335	\$768,847	\$20,941,488
24449	Regent Ins Co	\$884,290	0.02%	\$125,157,651	\$94,012,226	\$31,145,425
12262	Pennsylvania Manufacturers Assoc Ins	\$877,645	0.02%	\$761,192,006	\$536,719,056	\$224,472,950
29874	North Amer Specialty Ins Co	\$870,960	0.02%	\$514,172,911	\$141,125,693	\$373,047,218
19704	American States Ins Co	\$860,166	0.02%	\$155,139,489	\$34,547,449	\$120,592,040
22209	Freedom Specialty Ins Co	\$857,790	0.02%	\$32,879,485	\$20,881,222	\$11,998,263
10051	Lyndon Southern Ins Co	\$838,652	0.02%	\$70,672,564	\$39,680,181	\$30,992,383
31348	Crum & Forster Ind Co	\$817,150	0.02%	\$46,042,384	\$30,307,227	\$15,735,157
10641	Endurance Amer Ins Co	\$813,899	0.02%	\$1,313,789,478	\$1,066,302,389	\$247,487,089
30945	Plaza Ins Co	\$812,518	0.02%	\$49,920,771	\$24,837,997	\$25,082,774
12472	LUBA Cas Ins Co	\$808,087	0.02%	\$214,551,180	\$140,511,325	\$74,039,855
43460	Aspen Amer Ins Co	\$798,753	0.02%	\$443,680,779	\$186,156,712	\$257,524,067
25895	United States Liab Ins Co	\$794,013	0.02%	\$811,297,038	\$273,793,611	\$537,503,427
30180	Assured Guar Corp	\$776,685	0.02%	\$2,504,423,929	\$1,811,870,296	\$692,553,633
41459	Armed Forces Ins Exch	\$765,444	0.02%	\$123,015,714	\$61,417,543	\$61,598,171
22683	Teachers Ins Co	\$750,063	0.02%	\$329,280,775	\$188,885,371	\$140,395,404
26662	Milwaukee Cas Ins Co	\$743,417	0.02%	\$37,356,609	\$22,444,692	\$14,911,917
12873	Privilege Underwriters Recp Exch	\$737,319	0.02%	\$171,678,810	\$111,597,395	\$60,081,415
29700	North Amer Elite Ins Co	\$735,921	0.02%	\$123,437,828	\$88,229,778	\$35,208,050
28460	Sentry Cas Co	\$730,917	0.02%	\$240,263,968	\$167,253,837	\$73,010,131
10916	Suretec Ins Co	\$722,211	0.02%	\$157,619,094	\$79,597,557	\$78,021,536
22039	General Reins Corp	\$718,771	0.02%	\$16,219,709,818	\$4,658,021,746	\$11,561,688,072
10346	Employers Preferred Ins Co	\$715,820	0.02%	\$673,058,632	\$419,075,651	\$253,982,981
25496	Torus Natl Ins Co	\$684,216	0.02%	\$139,769,273	\$66,783,605	\$72,985,668
33650	Mendota Ins Co	\$661,090	0.02%	\$113,053,740	\$83,072,706	\$29,981,034
37220	Direct Ins Co	\$658,715	0.02%	\$73,475,884	\$48,553,629	\$24,922,255
10103	American Agricultural Ins Co	\$655,142	0.02%	\$1,093,111,657	\$603,854,064	\$489,257,593
10472	Capitol Ind Corp	\$648,602	0.01%	\$411,162,534	\$238,251,743	\$172,910,791
27928	Amex Assur Co	\$640,445	0.01%	\$296,510,798	\$99,645,916	\$196,864,882
14494	Merchants Bonding Co a Mut	\$637,146	0.01%	\$133,809,578	\$47,875,773	\$85,933,805
21296	Alterra Amer Ins Co	\$636,071	0.01%	\$222,418,440	\$72,161,151	\$150,257,289
11573	Accident Ins Co Inc	\$633,978	0.01%	\$58,871,720	\$41,911,297	\$16,960,423
10178	FCCI Ins Co	\$601,983	0.01%	\$1,628,874,307	\$1,076,759,622	\$552,114,685

Property and Casualty (Cont.)

NAIC	Company Name	AR Premium	Market Share	Assets	Liabilities	Capital & Surplus
24066	American Fire & Cas Co	\$587,186	0.01%	\$59,838,079	\$21,354,855	\$38,483,224
15911	American Mining Ins Co	\$586,947	0.01%	\$33,026,382	\$9,018,603	\$24,007,778
20346	Pacific Ind Co	\$586,257	0.01%	\$6,640,456,676	\$3,869,034,872	\$2,771,421,804
15954	AmTrust Ins Co of KS Inc	\$582,577	0.01%	\$43,379,561	\$28,104,513	\$15,275,048
12907	Southwest Physicians RRG Inc	\$573,893	0.01%	\$73,421,009	\$56,447,636	\$16,973,373
39942	American Natl Gen Ins Co	\$570,157	0.01%	\$101,371,519	\$45,155,552	\$56,215,967
37540	Beazley Ins Co Inc	\$561,651	0.01%	\$253,664,035	\$131,730,711	\$121,933,324
16624	Darwin Natl Assur Co	\$557,318	0.01%	\$689,271,651	\$325,237,562	\$364,034,089
24791	St Paul Mercury Ins Co	\$549,145	0.01%	\$340,527,280	\$209,834,609	\$130,692,671
21849	American Automobile Ins Co	\$548,233	0.01%	\$184,023,856	\$27,014,931	\$157,008,925
10676	First Guard Ins Co	\$542,845	0.01%	\$18,933,106	\$652,921	\$18,280,185
20362	Mitsui Sumitomo Ins Co of Amer	\$538,855	0.01%	\$845,215,783	\$525,585,615	\$319,630,168
29980	First Colonial Ins Co	\$537,421	0.01%	\$380,763,369	\$186,937,979	\$193,825,390
25054	Hudson Ins Co	\$527,923	0.01%	\$819,044,413	\$405,095,761	\$413,948,652
11452	Hartford Steam Boil Inspec & Ins Co	\$523,018	0.01%	\$1,372,027,353	\$731,093,711	\$640,933,642
18619	Platte River Ins Co	\$520,786	0.01%	\$126,206,410	\$84,904,167	\$41,302,243
21261	Electric Ins Co	\$516,784	0.01%	\$1,448,715,390	\$926,155,536	\$522,559,854
10216	American Contractors Ind Co	\$507,587	0.01%	\$335,243,323	\$245,644,535	\$89,598,788
35408	Imperium Ins Co	\$500,070	0.01%	\$361,272,461	\$226,498,532	\$134,773,929
11592	International Fidelity Ins Co	\$498,227	0.01%	\$233,292,200	\$126,511,861	\$106,780,339
13269	Zenith Ins Co	\$495,440	0.01%	\$1,783,758,870	\$1,267,971,110	\$515,787,760
10936	Seneca Ins Co Inc	\$478,487	0.01%	\$194,727,795	\$61,770,123	\$132,957,672
21784	Firemens Ins Co Of Washington DC	\$475,459	0.01%	\$91,349,993	\$60,480,770	\$30,869,223
42498	Cameron Natl Ins Co	\$473,017	0.01%	\$11,138,304	\$2,315,822	\$8,822,482
16217	National Farmers Union Prop & Cas	\$471,702	0.01%	\$178,352,524	\$136,677,201	\$41,675,323
36234	Preferred Professional Ins Co	\$469,194	0.01%	\$408,932,635	\$202,841,098	\$206,091,537
21865	Associated Ind Corp	\$451,931	0.01%	\$99,624,896	\$17,314,669	\$82,310,227
15580	Scottsdale Ind Co	\$451,541	0.01%	\$68,986,493	\$32,391,031	\$36,595,462
19690	American Economy Ins Co	\$445,385	0.01%	\$77,595,314	\$13,825,270	\$63,770,044
11832	Health Care Industry Liab Recip Ins	\$444,896	0.01%	\$47,790,787	\$32,528,387	\$15,262,400
10499	Corepointe Ins Co	\$435,296	0.01%	\$225,293,066	\$91,557,471	\$133,735,595
22551	Mitsui Sumitomo Ins USA Inc	\$431,519	0.01%	\$118,970,389	\$58,301,917	\$60,668,472
42048	Diamond State Ins Co	\$428,662	0.01%	\$172,990,119	\$121,232,190	\$51,757,929
44393	West Amer Ins Co	\$426,084	0.01%	\$100,373,289	\$52,643,366	\$47,729,923
33898	Aegis Security Ins Co	\$422,189	0.01%	\$97,859,200	\$46,374,165	\$51,485,035
24031	Northland Cas Co	\$420,513	0.01%	\$104,153,508	\$69,988,478	\$34,165,029
35769	Lyndon Prop Ins Co	\$418,970	0.01%	\$365,366,864	\$218,768,886	\$146,597,978
10817	Plateau Cas Ins Co	\$417,357	0.01%	\$33,957,394	\$15,678,671	\$18,278,723
23647	Ironshore Ind Inc	\$413,148	0.01%	\$270,426,386	\$149,886,269	\$120,540,117
18430	Agricultural Workers Mut Auto Ins	\$404,952	0.01%	\$71,316,121	\$37,014,119	\$34,302,002
10353	Ooida RRG Inc	\$401,428	0.01%	\$79,351,538	\$62,084,252	\$17,267,286
12866	T H E Ins Co	\$396,813	0.01%	\$190,250,310	\$128,083,333	\$62,166,978
32603	Berkley Ins Co	\$385,625	0.01%	\$16,122,680,430	\$11,215,508,141	\$4,907,172,289
11598	Applied Medico Legal Solutions RRG	\$379,088	0.01%	\$104,650,517	\$75,414,166	\$29,236,351
26069	Wausau Business Ins Co	\$377,577	0.01%	\$43,589,590	\$18,465,514	\$25,124,076
15865	NCMIC Ins Co	\$367,980	0.01%	\$593,933,151	\$352,472,324	\$241,460,827
28258	Continental Ind Co	\$358,961	0.01%	\$129,067,890	\$75,302,721	\$53,765,169
44121	Oms Natl Ins Co Rrg	\$358,459	0.01%	\$342,857,472	\$151,314,026	\$191,543,446
19372	Northern Ins Co Of NY	\$351,306	0.01%	\$38,014,366	\$8,520,416	\$29,493,950
14460	Podiatry Ins Co Of Amer	\$349,672	0.01%	\$339,673,470	\$225,399,896	\$114,273,574
44105	Ophthalmic Mut Ins Co RRG	\$348,120	0.01%	\$259,923,392	\$96,343,589	\$163,579,803
24732	General Ins Co Of Amer	\$346,930	0.01%	\$126,166,276	\$21,613,392	\$104,552,884
24139	Old Republic Gen Ins Corp	\$346,035	0.01%	\$1,730,622,775	\$1,298,953,782	\$431,668,993
19348	Capson Physicians Ins Co	\$345,029	0.01%	\$20,736,494	\$13,184,291	\$7,552,203

Property and Casualty (Cont.)

NAIC	Company Name	AR Premium	Market Share	Assets	Liabilities	Capital & Surplus
12572	Selective Ins Co Of Amer	\$335,536	0.01%	\$1,951,018,741	\$1,487,580,862	\$463,437,879
23426	Oklahoma Surety Co	\$332,550	0.01%	\$27,769,708	\$10,170,935	\$17,598,773
31089	Repwest Ins Co	\$331,672	0.01%	\$284,739,547	\$157,903,951	\$126,835,596
19984	ACIG Ins Co	\$330,454	0.01%	\$382,185,037	\$266,896,331	\$115,288,706
12305	Accident Fund Natl Ins Co	\$328,252	0.01%	\$211,635,519	\$158,198,784	\$53,436,735
14265	Indiana Lumbermens Mut Ins Co	\$325,664	0.01%	\$57,516,985	\$38,423,222	\$19,093,763
11242	Allied Eastern Ind Co	\$324,875	0.01%	\$54,881,998	\$41,912,489	\$12,969,509
42897	American Serv Ins Co Inc	\$323,058	0.01%	\$108,267,366	\$81,474,221	\$26,793,145
39969	American Safety Cas Ins Co	\$320,420	0.01%	\$192,178,914	\$69,697,740	\$122,481,174
12750	Evergreen Natl Ind Co	\$316,280	0.01%	\$47,613,215	\$13,752,355	\$33,860,860
41424	Pennsylvania Manufacturers Ind Co	\$313,256	0.01%	\$200,042,649	\$122,980,079	\$77,062,570
18279	Bankers Standard Ins Co	\$305,077	0.01%	\$408,656,332	\$276,600,692	\$132,055,640
25224	Great Divide Ins Co	\$303,967	0.01%	\$189,474,026	\$123,743,503	\$65,730,523
18694	Great Midwest Ins Co	\$302,307	0.01%	\$128,261,299	\$72,203,105	\$56,058,194
36307	Gray Ins Co	\$298,432	0.01%	\$288,980,545	\$177,745,816	\$111,234,729
10083	The Natl Catholic RRG Inc	\$298,292	0.01%	\$64,757,752	\$46,812,389	\$17,945,363
36161	Travelers Prop Cas Ins Co	\$286,160	0.01%	\$223,965,507	\$153,447,069	\$70,518,438
38776	Sirius Amer Ins Co	\$284,901	0.01%	\$1,559,423,346	\$1,011,068,660	\$548,354,686
40258	AIG Assur Co	\$282,797	0.01%	\$44,117,058	\$1,149,428	\$42,967,630
41998	American Southern Home Ins Co	\$279,136	0.01%	\$135,874,745	\$99,000,197	\$36,874,548
31003	Tri State Ins Co Of MN	\$276,804	0.01%	\$32,011,805	\$1,085,292	\$30,926,513
36650	Guarantee Co Of N Amer USA	\$275,724	0.01%	\$235,553,349	\$79,800,029	\$155,753,319
10069	Housing Authority Prop A Mut Co	\$274,147	0.01%	\$165,394,450	\$48,259,107	\$117,135,343
36463	Discover Prop & Cas Ins Co	\$273,315	0.01%	\$140,430,209	\$76,045,261	\$64,384,948
37923	Seaworthy Ins Co	\$271,457	0.01%	\$95,666,791	\$43,926,024	\$51,740,767
10367	Avemco Ins Co	\$267,295	0.01%	\$103,085,350	\$33,692,907	\$69,392,443
31887	Coface N Amer Ins Co	\$259,933	0.01%	\$146,964,828	\$81,944,523	\$65,020,305
34762	Sunz Ins Co	\$250,504	0.01%	\$54,413,157	\$46,144,698	\$8,268,459
32786	Progressive Specialty Ins Co	\$248,011	0.01%	\$941,276,707	\$555,052,435	\$386,224,272
27847	Insurance Co Of The West	\$244,511	0.01%	\$1,314,510,758	\$780,966,462	\$533,544,296
22578	Horace Mann Ins Co	\$238,927	0.01%	\$432,491,056	\$255,482,920	\$177,008,136
40444	Old Republic Surety Co	\$235,357	0.01%	\$105,661,490	\$53,740,473	\$51,921,017
10815	Verlan Fire Ins Co MD	\$230,588	0.01%	\$24,794,395	\$39,341	\$24,755,054
24724	First Natl Ins Co Of Amer	\$221,872	0.01%	\$79,664,937	\$26,616,790	\$53,048,147
44237	Mental Hlth RRG	\$221,856	0.01%	\$25,237,243	\$12,057,148	\$13,180,095
11206	Housing Enterprise Ins Co Inc	\$221,095	0.01%	\$59,652,027	\$31,953,047	\$27,698,980
26565	Ohio Ind Co	\$221,038	0.01%	\$133,325,549	\$88,101,019	\$45,224,530
20141	National Trust Ins Co	\$220,473	0.01%	\$34,878,699	\$(701,067)	\$35,579,766
25976	Utica Mut Ins Co	\$218,669	0.01%	\$2,130,108,412	\$1,355,027,474	\$775,080,938
18287	Assured Guar Municipal Corp	\$212,061	0.00%	\$5,712,135,266	\$3,978,985,991	\$1,733,149,275
21172	Vanliner Ins Co	\$210,671	0.00%	\$325,013,236	\$203,095,710	\$121,917,525
30325	Zale Ind Co	\$209,090	0.00%	\$42,175,605	\$26,170,963	\$16,004,642
10200	Hiscox Ins Co Inc	\$207,275	0.00%	\$125,241,688	\$69,914,380	\$55,327,308
37710	First Amer Prop & Cas Ins Co	\$204,282	0.00%	\$95,549,918	\$52,006,600	\$43,543,318
12754	Medicus Ins Co	\$201,832	0.00%	\$96,599,549	\$64,281,845	\$32,317,704
38300	Samsung Fire & Marine Ins Co Ltd	\$197,429	0.00%	\$179,947,192	\$115,514,609	\$64,432,583
11231	Generali Us Branch	\$197,166	0.00%	\$67,498,187	\$38,142,874	\$29,355,313
40266	CMG Mortgage Ins Co	\$188,656	0.00%	\$382,132,688	\$220,709,078	\$161,423,610
19860	Argonaut Great Central Ins Co	\$186,402	0.00%	\$50,313,044	\$25,950,273	\$24,362,771
24813	Balboa Ins Co	\$182,186	0.00%	\$297,528,226	\$103,057,762	\$194,470,464
29530	AXA Art Ins Corp	\$180,277	0.00%	\$50,157,268	\$20,439,167	\$29,718,101
13307	Lexon Ins Co	\$179,278	0.00%	\$131,009,371	\$87,011,436	\$43,997,935
12297	Petroleum Cas Co	\$177,122	0.00%	\$31,993,930	\$8,320,981	\$23,672,949
23434	Middlesex Ins Co	\$173,116	0.00%	\$653,237,357	\$410,485,895	\$242,751,461

Property and Casualty (Cont.)

NAIC	Company Name	AR Premium	Market Share	Assets	Liabilities	Capital & Surplus
11579	Old Glory Ins Co	\$150,702	0.00%	\$20,125,885	\$12,159,697	\$7,966,188
41394	Benchmark Ins Co	\$150,410	0.00%	\$159,274,899	\$106,974,174	\$52,300,725
32778	Washington Intl Ins Co	\$150,045	0.00%	\$108,709,723	\$36,281,559	\$72,428,164
25984	Graphic Arts Mut Ins Co	\$145,664	0.00%	\$128,356,077	\$76,209,084	\$52,146,993
10794	Companion Commercial Ins Co	\$136,373	0.00%	\$20,915,813	\$1,781,968	\$19,133,845
38962	Genesis Ins Co	\$135,658	0.00%	\$203,932,086	\$61,005,459	\$142,926,627
41491	Geico Cas Co	\$135,300	0.00%	\$2,707,239,880	\$1,706,255,603	\$1,000,984,277
10020	United Educators Ins RRG Inc	\$133,884	0.00%	\$759,714,340	\$505,260,263	\$254,454,077
44130	Paratransit Ins Co Mut RRG	\$133,655	0.00%	\$23,468,272	\$11,668,368	\$11,799,904
36072	National Guardian RRG Inc	\$132,370	0.00%	\$16,356,318	\$10,373,092	\$5,983,226
37060	Old United Cas Co	\$130,634	0.00%	\$603,836,502	\$301,278,745	\$302,557,757
25887	United States Fidelity & Guar Co	\$128,595	0.00%	\$4,653,938,415	\$2,169,502,708	\$2,484,435,707
13978	Florists Mut Ins Co	\$128,212	0.00%	\$159,845,503	\$116,575,787	\$43,269,716
14990	Pennsylvania Natl Mut Cas Ins Co	\$127,305	0.00%	\$1,126,053,955	\$584,860,489	\$541,193,466
14388	Cherokee Guar Co Inc a RRG	\$126,872	0.00%	\$9,365,319	\$7,261,915	\$2,103,404
27740	North Pointe Ins Co	\$122,023	0.00%	\$98,714,532	\$77,711,892	\$21,002,639
10084	Title Industry Assur Co RRG	\$119,162	0.00%	\$6,312,059	\$2,730,864	\$3,581,195
33022	AXA Ins Co	\$115,248	0.00%	\$208,691,818	\$90,868,882	\$117,822,936
13613	College RRG Inc	\$114,979	0.00%	\$17,364,093	\$11,100,404	\$6,263,689
10235	American Southern Ins Co	\$108,725	0.00%	\$108,647,736	\$69,556,103	\$39,091,633
13126	Midwest Builders Cas Mut Co	\$104,041	0.00%	\$78,799,049	\$37,407,155	\$41,391,894
10724	Eastern Alliance Ins Co	\$98,099	0.00%	\$221,192,998	\$140,898,955	\$80,294,043
23353	Meridian Security Ins Co	\$97,997	0.00%	\$114,197,498	\$47,224,346	\$66,973,152
36153	Aetna Ins Co of CT	\$97,685	0.00%	\$16,830,863	\$1,870,705	\$14,960,158
31232	Work First Cas Co	\$96,777	0.00%	\$44,302,247	\$34,013,553	\$10,288,694
14788	NGM Ins Co	\$96,200	0.00%	\$2,265,302,318	\$1,328,418,312	\$936,884,006
32506	Monroe Guar Ins Co	\$95,017	0.00%	\$46,929,858	\$(2,879,574)	\$49,809,432
35181	Executive Risk Ind Inc	\$88,431	0.00%	\$2,977,323,104	\$1,758,697,609	\$1,218,625,495
33383	First Professionals Ins Co	\$87,483	0.00%	\$464,844,676	\$289,812,017	\$175,032,659
19941	American Commerce Ins Co	\$86,478	0.00%	\$306,059,404	\$194,064,754	\$111,994,650
31968	Merastar Ins Co	\$86,037	0.00%	\$32,605,685	\$23,315,823	\$9,289,861
14249	Founders Ins Co	\$83,285	0.00%	\$224,777,564	\$174,220,817	\$50,556,747
10222	PACO Assur Co Inc	\$82,702	0.00%	\$73,761,399	\$39,988,649	\$33,772,750
35157	Fair Amer Ins & Reins Co	\$78,195	0.00%	\$254,761,720	\$24,146,623	\$230,615,097
10476	STICO Mut Ins Co RRG	\$76,717	0.00%	\$22,706,429	\$11,517,551	\$11,188,878
12209	Restoration RRG Inc	\$76,433	0.00%	\$56,634,573	\$36,931,243	\$19,703,330
41238	Trans Pacific Ins Co	\$75,835	0.00%	\$65,120,483	\$17,909,355	\$47,211,128
12189	Oceanus Ins Co A RRG	\$75,241	0.00%	\$79,823,114	\$58,960,977	\$20,862,137
39527	Heritage Ind Co	\$73,499	0.00%	\$207,686,607	\$95,086,842	\$112,599,765
10671	The Gray Cas & Surety Co	\$67,222	0.00%	\$17,145,450	\$2,588,082	\$14,557,368
14026	Sunland RRG Inc	\$66,725	0.00%	\$3,398,146	\$2,310,754	\$1,087,392
22608	National Specialty Ins Co	\$61,789	0.00%	\$52,674,670	\$21,268,753	\$31,405,917
11123	Safety First Ins Co	\$61,445	0.00%	\$18,506,298	\$4,140,184	\$14,366,114
26797	Housing Authority RRG Inc	\$61,241	0.00%	\$314,789,101	\$120,041,830	\$194,747,271
36927	Colony Specialty Ins Co	\$60,062	0.00%	\$69,729,506	\$42,329,485	\$27,400,021
10340	Stonington Ins Co	\$57,454	0.00%	\$153,595,749	\$107,200,742	\$46,395,007
19224	St Paul Protective Ins Co	\$56,957	0.00%	\$510,117,776	\$281,889,423	\$228,228,353
35505	Rockwood Cas Ins Co	\$56,906	0.00%	\$238,772,613	\$154,582,984	\$84,189,629
29157	United WI Ins Co	\$56,070	0.00%	\$361,166,347	\$287,206,236	\$73,960,111
17965	American Sentinel Ins Co	\$55,983	0.00%	\$30,626,588	\$15,702,343	\$14,924,245
10212	Allmerica Fin Alliance Ins Co	\$51,434	0.00%	\$18,986,475	\$10,179	\$18,976,296
11153	Titan Ins Co Inc RRG	\$50,728	0.00%	\$41,033,455	\$10,640,666	\$30,392,789
24678	Arrowood Ind Co	\$50,637	0.00%	\$1,539,953,840	\$1,279,502,506	\$260,451,334
12190	American Pet Ins Co	\$49,315	0.00%	\$30,959,870	\$14,084,898	\$16,874,972

Property and Casualty (Cont.)

NAIC	Company Name	AR Premium	Market Share	Assets	Liabilities	Capital & Surplus
10054	Securian Cas Co	\$47,028	0.00%	\$173,885,206	\$72,799,617	\$101,085,589
11710	Allied Professionals Ins Co RRG	\$47,010	0.00%	\$36,901,274	\$22,607,756	\$14,293,519
18708	Ambac Assur Corp	\$45,000	0.00%	\$5,914,756,966	\$5,074,495,401	\$840,261,565
12718	Developers Surety & Ind Co	\$44,020	0.00%	\$123,509,966	\$47,695,277	\$75,814,689
31925	Stonewood Natl Ins Co	\$43,912	0.00%	\$227,209,331	\$179,468,246	\$47,741,085
34924	Dakota Truck Underwriters	\$42,879	0.00%	\$100,092,571	\$60,915,921	\$39,176,650
13177	ARCOA RRG Inc	\$42,371	0.00%	\$10,475,183	\$7,808,843	\$2,666,340
22276	Stonewall Ins Co	\$41,499	0.00%	\$3,357,684,656	\$250,962,499	\$3,106,722,157
26581	Independence Amer Ins Co	\$41,138	0.00%	\$102,111,090	\$44,236,539	\$57,874,551
13200	Universal Surety Of Amer	\$40,474	0.00%	\$15,638,544	\$13,915	\$15,624,629
37206	Contractors Bonding & Ins Co	\$39,290	0.00%	\$195,534,458	\$84,042,835	\$111,491,623
16810	American Mercury Ins Co	\$38,199	0.00%	\$331,423,746	\$195,740,737	\$135,683,009
14190	OBI Natl Ins Co	\$36,280	0.00%	\$12,950,877	\$7,522	\$12,943,355
15474	National Lloyds Ins Co	\$35,806	0.00%	\$199,919,362	\$101,317,472	\$98,601,890
10113	Terra Ins Co RRG	\$34,927	0.00%	\$27,716,531	\$10,890,753	\$16,825,778
36765	Gulf Guar Ins Co	\$34,366	0.00%	\$4,964,761	\$1,165,219	\$3,799,542
10232	American Assoc Of Othodontists RRG	\$33,633	0.00%	\$40,260,961	\$28,354,143	\$11,906,818
12172	Claim Professionals Liab ins Co RRG	\$33,554	0.00%	\$3,566,798	\$1,657,419	\$1,909,379
15679	National Fire & Ind Exch	\$33,535	0.00%	\$11,839,904	\$5,696,133	\$6,143,771
21970	OneBeacon Ins Co	\$32,477	0.00%	\$1,085,924,002	\$219,735,320	\$866,188,682
33162	Bankers Ins Co	\$31,467	0.00%	\$148,040,944	\$89,129,893	\$58,911,051
28886	Transguard Ins Co Of Amer Inc	\$29,994	0.00%	\$248,408,197	\$119,664,650	\$128,743,547
45934	American Compensation Ins Co	\$29,094	0.00%	\$66,752,125	\$15,511,471	\$51,240,654
10754	Spirit Mountain Ins Co RRG Inc	\$28,442	0.00%	\$6,462,750	\$3,220,744	\$3,242,006
13722	Knightbrook Ins Co	\$27,504	0.00%	\$162,240,422	\$114,829,588	\$47,410,834
10801	Fortress Ins Co	\$27,025	0.00%	\$137,750,489	\$78,025,406	\$59,725,083
11600	Frank Winston Crum Ins Co	\$27,021	0.00%	\$43,376,549	\$29,063,414	\$14,313,135
35963	AF&L Ins Co	\$26,801	0.00%	\$164,164,360	\$164,161,554	\$2,806
11267	Security Amer RRG Inc	\$24,754	0.00%	\$4,578,955	\$1,895,111	\$2,683,844
10243	National Continental Ins Co	\$24,601	0.00%	\$187,439,458	\$138,547,958	\$48,891,500
12294	Southwest Marine & Gen Ins Co	\$23,500	0.00%	\$106,425,790	\$56,389,969	\$50,035,821
31470	Norguard Ins Co	\$22,148	0.00%	\$426,874,298	\$275,920,502	\$150,953,796
13179	ProAir RRG Inc	\$21,400	0.00%	\$588,011	\$214,542	\$373,469
20702	Ace Fire Underwriters Ins Co	\$21,106	0.00%	\$101,081,334	\$29,770,098	\$71,311,236
10758	Colonial Surety Co	\$19,853	0.00%	\$46,564,795	\$20,593,165	\$25,971,630
25933	Universal Surety Co	\$19,147	0.00%	\$169,027,000	\$47,282,229	\$121,744,771
11967	General Star Natl Ins Co	\$18,708	0.00%	\$256,381,284	\$58,335,603	\$198,045,681
16667	United Guar Residential Ins Co of NC	\$18,638	0.00%	\$448,483,696	\$70,630,121	\$377,853,575
29823	Genworth Residential Mortgage Ins Co	\$17,569	0.00%	\$214,961,571	\$135,057,839	\$79,903,732
13792	New Home Warranty Ins Co a RRG	\$16,927	0.00%	\$14,514,603	\$9,101,758	\$5,412,845
25879	Fidelity & Guar Ins Underwriters Inc	\$16,248	0.00%	\$170,719,503	\$69,726,163	\$100,993,340
40517	Advantage Workers Comp Ins Co	\$15,976	0.00%	\$118,647,150	\$68,417,752	\$50,229,398
11050	Amerisure Partners Ins Co	\$15,944	0.00%	\$70,482,962	\$48,333,557	\$22,149,405
11197	National Independent Truckers IC RRG	\$15,700	0.00%	\$10,496,497	\$4,420,122	\$6,076,375
13720	CrossFit RRG Inc	\$14,454	0.00%	\$3,741,904	\$2,160,843	\$1,581,061
10164	Cpa Mut Ins Co Of Amer RRG	\$13,908	0.00%	\$23,684,385	\$14,191,728	\$9,492,657
28860	RLI Ind Co	\$13,850	0.00%	\$43,723,584	\$815,734	\$42,907,850
13285	Allegheny Cas Co	\$13,840	0.00%	\$34,598,463	\$14,151,389	\$20,447,074
18538	Red Rock Ins Co	\$13,623	0.00%	\$65,071,997	\$43,564,810	\$21,507,187
24503	Catlin Ind Co	\$13,607	0.00%	\$95,056,019	\$17,546,962	\$77,509,057
14366	NASW RRG Inc	\$13,528	0.00%	\$2,328,603	\$1,025,056	\$1,303,547
20648	Employers Fire Ins Co	\$13,229	0.00%	\$19,383,524	\$33,146	\$19,350,378
24775	St Paul Guardian Ins Co	\$13,151	0.00%	\$78,986,402	\$52,824,246	\$26,162,155
10003	Excess Share Ins Corp	\$12,857	0.00%	\$50,662,638	\$30,005,385	\$20,657,253

Property and Casualty (Cont.)

NAIC	Company Name	AR Premium	Market Share	Assets	Liabilities	Capital & Surplus
10234	National Serv Contract Ins Co RRG	\$12,353	0.00%	\$12,361,390	\$1,777,882	\$10,583,508
37850	Pacific Specialty Ins Co	\$12,317	0.00%	\$377,076,218	\$171,209,570	\$205,866,648
40169	Metropolitan Cas Ins Co	\$11,893	0.00%	\$196,904,450	\$145,654,694	\$51,249,756
25422	Atradius Trade Credit Ins Co	\$10,734	0.00%	\$98,882,942	\$34,300,907	\$64,582,035
24104	Ohio Farmers Ins Co	\$9,939	0.00%	\$2,404,576,906	\$595,886,710	\$1,808,690,196
13242	Titan Ind Co	\$9,363	0.00%	\$244,587,665	\$77,214,357	\$167,373,308
43273	Insurors Ind Co	\$8,656	0.00%	\$21,053,901	\$9,286,706	\$11,767,195
13580	ARISE Boiler Inspection & Ins Co RRG	\$8,456	0.00%	\$2,975,990	\$827,522	\$2,148,468
11825	Care RRG Inc	\$8,313	0.00%	\$17,382,253	\$12,617,763	\$4,764,490
36340	Camico Mut Ins Co	\$7,873	0.00%	\$93,766,670	\$55,237,927	\$38,528,743
22713	Insurance Co of N Amer	\$7,657	0.00%	\$787,125,136	\$604,284,069	\$182,841,067
36560	Service Ins Co	\$6,749	0.00%	\$40,427,217	\$13,095,736	\$27,331,481
26905	Century Natl Ins Co	\$6,559	0.00%	\$587,656,225	\$201,124,339	\$386,531,886
32859	Penn Amer Ins Co	\$6,342	0.00%	\$272,639,192	\$192,239,081	\$80,400,111
28339	Gateway Ins Co	\$6,044	0.00%	\$37,415,410	\$26,165,837	\$11,249,572
29033	Atain Ins Co	\$5,765	0.00%	\$62,648,280	\$24,805,285	\$37,842,995
21903	Procentury Ins Co	\$5,542	0.00%	\$211,669,399	\$165,619,689	\$46,049,711
21075	Financial Amer Prop & Cas Ins Co	\$5,538	0.00%	\$12,754,331	\$2,480,190	\$10,274,141
40940	Western Pacific Mut Ins Co RRG	\$5,521	0.00%	\$137,592,563	\$33,002,653	\$104,589,910
42390	Amguard Ins Co	\$5,439	0.00%	\$358,794,710	\$255,719,376	\$103,075,334
27081	Bond Safeguard Ins Co	\$5,425	0.00%	\$66,920,696	\$39,139,133	\$27,781,563
32450	ALPS Prop & Cas Ins Co	\$5,330	0.00%	\$97,355,328	\$61,728,843	\$35,626,485
13677	Affiliates Ins Recip a RRG	\$3,305	0.00%	\$5,877,793	\$2,670,593	\$3,207,200
26999	United Guar Mortgage Ind Co	\$2,771	0.00%	\$283,788,814	\$170,561,754	\$113,227,060
11030	Memic Ind Co	\$2,557	0.00%	\$279,659,574	\$173,572,429	\$106,087,145
25448	American Safety RRG Inc	\$2,550	0.00%	\$13,485,902	\$6,082,756	\$7,403,146
18759	Genworth Residential Mortgage Assur	\$2,528	0.00%	\$100,557,359	\$18,515,408	\$82,041,951
23132	RVI Amer Ins Co	\$2,500	0.00%	\$94,566,084	\$26,388,696	\$68,177,388
11595	Merchants Natl Bonding Inc	\$2,259	0.00%	\$17,311,541	\$6,756,126	\$10,555,415
11114	St Charles Ins Co RRG	\$2,210	0.00%	\$13,097,418	\$4,376,401	\$8,721,017
20796	21st Century Premier Ins Co	\$2,025	0.00%	\$264,538,284	\$6,620,324	\$257,917,960
41211	Triton Ins Co	\$1,582	0.00%	\$527,843,738	\$321,941,561	\$205,902,177
22985	Sequoia Ins Co	\$1,523	0.00%	\$244,792,828	\$170,290,081	\$74,502,747
27073	Nipponkoa Ins Co Ltd US Br	\$1,156	0.00%	\$251,565,076	\$177,424,711	\$74,140,365
22950	Acstar Ins Co	\$1,000	0.00%	\$63,657,979	\$34,756,808	\$28,901,171
11145	Golden Ins Co RRG	\$779	0.00%	\$7,134,962	\$4,690,178	\$2,444,784
26220	Yosemite Ins Co	\$650	0.00%	\$247,983,831	\$94,273,872	\$153,709,959
31534	Citizens Ins Co Of Amer	\$619	0.00%	\$1,476,562,770	\$814,380,345	\$662,182,425
31453	Financial Pacific Ins Co	\$456	0.00%	\$204,950,738	\$123,681,951	\$81,268,787
25151	State Farm Gen Ins Co	\$387	0.00%	\$6,388,142,050	\$2,935,545,626	\$3,452,596,424
22810	Chicago Ins Co	\$264	0.00%	\$108,222,850	\$55,116,830	\$53,106,020
14402	Bearing Midwest Cas Co	\$160	0.00%	\$5,647,661	\$104,326	\$5,543,335
16675	Genworth Mortgage Ins Corp Of NC	\$133	0.00%	\$351,920,440	\$228,304,530	\$123,615,910
13695	National Mortgage Ins Corp	\$132	0.00%	\$194,180,118	\$13,870,243	\$180,309,875
13986	Frankenmuth Mut Ins Co	\$126	0.00%	\$1,069,339,692	\$624,293,749	\$445,045,942
22730	Allied World Ins Co	\$100	0.00%	\$1,687,333,227	\$642,806,645	\$1,044,526,582
12934	Academic Medical Professionals Ins E	\$100	0.00%	\$2,929,994	\$1,024,522	\$1,905,472
37621	Toyota Motor Ins Co	\$75	0.00%	\$420,031,045	\$225,172,419	\$194,858,626
29513	The Bar Plan Mut Ins Co	\$70	0.00%	\$48,286,374	\$30,393,653	\$17,892,721
18740	MGIC Ind Corp	\$42	0.00%	\$480,955,832	\$22,883,061	\$458,072,771
13019	Eastern Advantage Assur Co	\$3	0.00%	\$33,755,075	\$22,321,538	\$11,433,537
12839	Road Contractors Mut Ins Co	\$2	0.00%	\$8,644,255	\$5,631,572	\$3,012,683
TOTAL		\$4,328,136,460	100.0%			

Title

NAIC	Company Name	AR Premium	Market Share	Assets	Liabilities	Capital & Surplus
50121	Stewart Title Guar Co	\$11,587,212	22.05%	\$1,048,016,604	\$574,307,716	\$473,708,888
50814	First Amer Title Ins Co	\$10,520,699	20.02%	\$2,234,494,269	\$1,238,531,599	\$995,962,670
50229	Chicago Title Ins Co	\$9,348,056	17.79%	\$1,848,553,321	\$931,396,620	\$917,156,701
50520	Old Republic Natl Title Ins Co	\$8,451,648	16.08%	\$918,384,088	\$507,868,074	\$410,516,014
51586	Fidelity Natl Title Ins Co	\$8,090,942	15.39%	\$1,309,240,262	\$842,780,219	\$466,460,043
12522	Agents Natl Title Ins Co	\$1,311,850	2.50%	\$7,235,719	\$4,161,940	\$3,073,779
50784	Security Title Guarantee Corp Baltim	\$1,064,315	2.02%	\$13,905,644	\$10,886,551	\$3,019,093
51020	National Title Ins Of NY Inc	\$790,905	1.50%	\$122,137,881	\$70,320,978	\$51,816,903
50083	Commonwealth Land Title Ins Co	\$704,715	1.34%	\$598,408,038	\$350,476,891	\$247,931,147
51411	American Guar Title Ins Co	\$352,685	0.67%	\$30,458,236	\$12,286,430	\$18,171,806
51152	WFG Natl Title Ins Co	\$331,487	0.63%	\$50,124,236	\$32,115,877	\$18,008,359
51632	EnTitle Ins Co	\$5,168	0.01%	\$18,991,462	\$5,683,624	\$13,307,838
	TOTAL	\$52,559,682	100.00%			