

MEMORANDUM

TO: David Ferguson, Director
Bureau of Legislative Research
Room 315, State Capitol

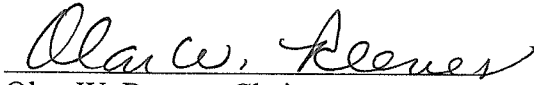
FROM: Full Commission
Arkansas Workers' Compensation Commission

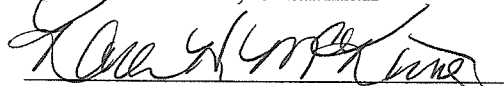
RE: 2006/2008 Biennial Report

DATE: January 8, 2009

In accordance with A.C.A. § 11-9-208 of the Arkansas Workers' Commission Law and Act 1276 of 1999, we hereby transmit to you our Biennial Report for the period July 1, 2006, through June 30, 2009.

Our respectful submittal of this report is authorized by the signatures below.


Olan W. Reeves, Chairman


Karen McKinney, Commissioner


Philip Hood, Commissioner



BIENNIAL REPORT

ARKANSAS WORKERS' COMPENSATION COMMISSION

Biennium
2006-2007
2007-2008



**ARKANSAS WORKERS'
COMPENSATION
COMMISSION
BIENNIAL REPORT FOR THE FISCAL
YEARS
2007 AND 2008**

MIKE BEEBE, GOVERNOR

**Olan W. Reeves, Chairman
Karen H. McKinney, Commissioner
Philip Hood, Commissioner**

Alan McClain, CEO

Table of Contents

| | |
|----------------------------|----|
| Mission | i |
| Introduction | ii |
| Organizational Chart | 1 |
| Divisions | 2 |
| Summary | 5 |
| Tables | 6 |

MISSION

The Mission of the Arkansas Workers' Compensation Commission is to provide a fair, efficient and professional public agency to serve the people of the State of Arkansas by administering actions required or authorized by Arkansas Workers' Compensation Law.

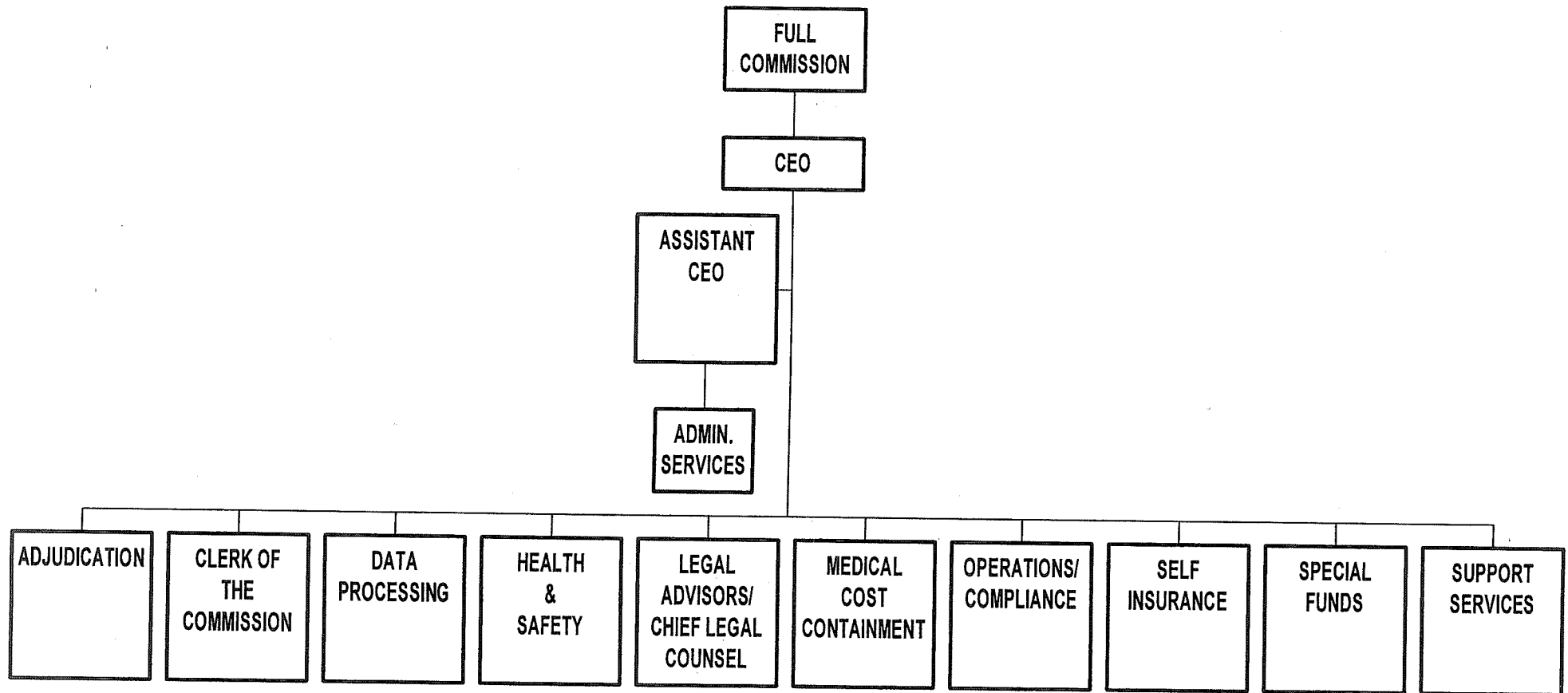
INTRODUCTION

The Arkansas Workers' Compensation Commission (AWCC) and the law it administers was created effective December 5, 1940. It is not an insurance company; it enforces the workers' compensation laws in order to ensure that all covered employers secure coverage from commercial carriers or through self-insurance programs. Additionally, the Commission monitors workers' compensation awards to ensure that benefit providers make timely payments to eligible claimants. Workers' compensation insurance is directed to the moral, social, and economic benefits of protecting employers, employees, and their dependents from financial burdens imposed by job-related injury and disease.

Should any dispute arise among the parties involved, the Arkansas Workers' Compensation Commission, through its three Commissioners and a staff of Administrative Law Judges, may adjudicate these cases and impose binding decisions. These decisions can be appealed to the Arkansas Court of Appeals and the Arkansas Supreme Court.

Each Commissioner is appointed by the Governor for a term of six years. One represents the interests of labor, one represents management, and the Chairman acts as a neutral party, representing the interests of the public. The three Commissioners, thirteen Administrative Law Judges, and seven Legal Advisors accomplish all judicial duties. Administrative functions are directed by the Chief Executive Officer.

ARKANSAS WORKERS' COMPENSATION COMMISSION ORGANIZATIONAL CHART



THE COMMISSION AND ITS DIVISIONS

The administrative and regulatory functions of the Arkansas Workers' Compensation Commission include monitoring claim and benefit payments to injured workers; processing settlements, lump sum payments, and requests for change of physicians; ensuring employers maintain required insurance coverage; approving employer applications to operate as self-insurers; and participating in programs to explain the functions of the Commission to the general public.

ADJUDICATION DIVISION

Administrative Law Judges conduct hearings when it becomes necessary to determine issues between parties in a claim. Proceedings are recorded by a court reporter and a written opinion is later issued awarding or denying compensation, based on the law and evidence presented at the hearing.

CLERK OF THE COMMISSION

The Clerk's office serves as a conduit through which all pleadings, filings, hearing requests, and other documents and notices submitted to the Commission are routed. The Clerk's Division is responsible for assigning cases to the Administrative Law Judges and Legal Advisors. In addition, the Clerk directs the maintenance, storage, and retrieval of case files, maintains the required dockets for cases appealed to the Full Commission, certifies record composition, certifies transcripts upon completion of record compilation, and coordinates case tracking in which Court of Appeals or Supreme Court review or rehearing is requested.

DATA PROCESSING DIVISION

The Data Processing Division maintains an automated records management system which captures data from the inception of a claim and maintains and updates this data throughout its life. The division currently maintains databases on reported claims, employers, insurance carriers, third party administrators, and various other supporting databases.

ADMINISTRATIVE SERVICES DIVISION

The Commission's operations are funded from a premium tax (limited by law to three percent) on workers' compensation premiums paid by insurance companies writing workers' compensation, companies qualifying as self-insurers, and all public employers. These funds are disbursed by the Administrative Services Division. This division also develops, implements, and monitors Commission human resource systems and policies. Purchasing, accounting, investments, travel, budget analyses, and payroll transactions are the responsibility of this division.

HEALTH & SAFETY DIVISION

The Health and Safety Division administers the Rule 32 Program, Accident Prevention Services, and the Voluntary Drug-Free Workplace. Through these programs, the division works with employers to develop effective loss control and monitors workers' compensation carriers to ensure they provide services to their Arkansas clients.

The Voluntary Drug-Free Workplace Program establishes criteria employers must meet in their drug-free workplace program in order to qualify for a five percent premium credit on their workers' compensation insurance. Educational materials, on-site consultations, and loss control educational services are provided by the division.

LEGAL ADVISOR DIVISION

This division provides legal information and assistance to interested parties who have questions about Arkansas workers' compensation law. The Legal Advisors are attorneys who know both the current workers' compensation laws and administrative procedures. They serve as a link between unrepresented claimants and insurance adjusters, providers, and employers. Often they are able to resolve disputes informally, thereby helping to decrease litigation and keep costs down. Another service offered by the division is mediation, a process through which a neutral party helps resolve disputes without the necessity of a hearing. The head of the division serves as General Counsel to the Chief Executive Officer; organizes and maintains the AWCC law library; and collects and analyzes case opinions.

MEDICAL COST CONTAINMENT DIVISION

This division is responsible for implementing and enforcing a fee schedule limiting the reimbursement for providers treating injured workers; establishing a comprehensive managed care program; and providing an impairment rating guide to be used in assessing anatomical impairment ratings.

OPERATIONS/COMPLIANCE DIVISION

Operations processes all reports of claims filed with the Commission. It also compiles workers' compensation "report cards" used to monitor insurance carriers for the timeliness and appropriateness of benefit payments and form filing. Compliance, the Commission's investigative arm, makes certain employers have insurance as required by Arkansas law which provides workers' compensation coverage for employees and assesses penalties on employers who fail to provide such coverage. Compliance also issues Certificates of Non-Coverage.

SELF-INSURANCE DIVISION

This division administers individual employers and groups who qualify as self-insurers. Those granted approval to participate in the program have the same responsibilities and liabilities as all employers and insurance companies.

SPECIAL FUNDS DIVISION

This division administers the Second Injury Trust Fund established to encourage the hiring of disabled or handicapped workers. The fund assumes the employer's liability for wage loss benefits when an employee's subsequent injury results in a combination of disabilities greater than the last injury. In cases where Second Injury Trust Fund liability exists, the employer's liability is limited to the permanent anatomical impairment rating. As of January 1, 2008, claims can no longer be made against the Second Injury Fund.

Another section of the Special Fund Division is the Death and Permanent Total Disability Trust Fund. The Fund pays weekly benefits to permanent and totally disabled workers or dependents of deceased workers after the workers' compensation insurer has paid its maximum indemnity liability as required by law.

SUPPORT SERVICES DIVISION

Support Services provides information to the public concerning workers' compensation in Arkansas and support to the Full Commission, Administration, and all divisions of the agency. The division assists in the compilation of the "Laws and Rules", advisories, and forms for the Commission; coordinates the annual educational conference, assists in form seminars and health and safety seminars; and special projects for the Commission. Support Services compiles and disseminates the agency's biennial report. This division is responsible for maintaining and operating all mail room activities for the Commission and its district offices and oversees the Commission's security and maintenance of its buildings and handles all parking for the Commission staff.

COMMISSION SUMMARY

As of June 30, 2008, the Arkansas Workers' Compensation Commission had **153** authorized positions.

As of June 30, 2008, the maximum weekly benefit rate for disability other than permanent partial disability was **\$550.00**.

As of June 30, 2008, the maximum weekly benefit rate for permanent partial disability was **\$413.00**.

There were **10,024** indemnity cases reported in Fiscal Year 2007.

There were **8,215** cases closed in Fiscal Year 2007.

There were **9,622** indemnity cases reported in Fiscal Year 2008.

There were **7,838** cases closed in Fiscal Year 2008.

The Administrative Law Judges were assigned **5,067** cases in Fiscal Year 2007. Of those, **1,356** were full hearings, **1,866** were reassignments, **896** were joint petitions, and **949** were joint petition reassignments.

There were **374** appeals to the Full Commission in Fiscal Year 2007.

There were **130** appeals to the Court of Appeals in Fiscal Year 2007.

The Administrative Law Judges were assigned **4,855** cases in Fiscal Year 2008. Of those, **1,324** were full hearings, **1,827** were reassignments, **787** were joint petitions, and **917** were joint petitions reassignments.

There were **331** appeals to the Full Commission in Fiscal Year 2008.

There were appeals **169** to the Court of Appeals in Fiscal Year 2008.

The Legal Advisors were assigned **42** mediations in Fiscal Year 2007.

The Legal Advisors were assigned **34** mediations in Fiscal Year 2006.

.....

TABLES

REPORTED ACCIDENTS BY MONTH
FISCAL YEAR 2007

| Month | Reported Cases | Closed Cases |
|-----------|----------------|--------------|
| JULY | 850 | 669 |
| AUGUST | 989 | 824 |
| SEPTEMBER | 905 | 643 |
| OCTOBER | 876 | 718 |
| NOVEMBER | 811 | 649 |
| DECEMBER | 734 | 714 |
| JANUARY | 837 | 698 |
| FEBRUARY | 733 | 720 |
| MARCH | 832 | 725 |
| APRIL | 787 | 629 |
| MAY | 910 | 681 |
| JUNE | 760 | 545 |
| TOTALS | 10,024 | 8,215 |

REPORTED ACCIDENTS BY MONTH
FISCAL YEAR 2008

| Month | Reported Cases | Closed Cases |
|-----------|----------------|--------------|
| JULY | 888 | 662 |
| AUGUST | 1,070 | 763 |
| SEPTEMBER | 777 | 491 |
| OCTOBER | 945 | 632 |
| NOVEMBER | 700 | 693 |
| DECEMBER | 690 | 671 |
| JANUARY | 751 | 756 |
| FEBRUARY | 758 | 636 |
| MARCH | 763 | 651 |
| APRIL | 775 | 690 |
| MAY | 744 | 454 |
| JUNE | 761 | 739 |
| TOTALS | 9,622 | 7,838 |

MEDICAL ONLY EXPENDITURE REPORT

FISCAL YEAR 2007

| Public | Self-Insurer | Private | Total |
|----------------|-----------------|-----------------|-----------------|
| \$1,327,255.57 | \$10,086,632.82 | \$10,494,541.96 | \$21,908,430.35 |

MEDICAL ONLY EXPENDITURE REPORT
FISCAL YEAR 2008

| Public | Self-Insurer | Private | Total |
|-----------------------|-----------------------|------------------------|------------------------|
| \$1,753,263.66 | \$9,617,727.11 | \$12,281,470.69 | \$23,652,461.46 |

EXPENDITURE REPORT - COMPENSABLE CASES

FISCAL YEAR 2007

| Expenditure | Private | Self-Ins. | Public | Total |
|----------------|-----------------|-----------------|----------------|------------------|
| COMPENSATION | \$22,025,961.08 | \$11,230,408.19 | \$1,942,238.56 | \$35,198,607.83 |
| LUMP SUM | \$433,146.29 | \$383,544.75 | \$8,339.50 | \$825,030.54 |
| JOINT PETITION | \$15,738,086.47 | \$4,101,668.80 | \$364,522.72 | \$20,204,277.99 |
| ATTORNEY FEES | \$6,272,914.17 | \$2,420,298.29 | \$95,333.71 | \$8,788,546.17 |
| OTHER 1 | \$1,095,253.53 | \$174,733.71 | \$4,325.17 | \$1,274,312.41 |
| HOSPITAL | \$11,692,784.59 | \$4,640,981.65 | \$581,538.96 | \$16,915,305.21 |
| MEDICAL | \$26,722,928.75 | \$14,724,357.60 | \$1,522,878.55 | \$42,970,164.90 |
| MEDICINE | \$1,454,118.27 | \$855,159.30 | \$151,973.14 | \$2,461,250.71 |
| FUNERAL | \$136,417.47 | \$100,162.04 | \$12,000.00 | \$248,579.51 |
| REHABILITATION | \$733,908.97 | \$304,659.83 | \$26,261.79 | \$1,064,830.59 |
| OTHER 2 | \$3,113,202.78 | \$1,203,214.84 | \$430,440.31 | \$4,746,857.93 |
| TOTAL | \$89,418,722.38 | \$40,139,189.01 | \$5,139,852.41 | \$134,697,763.79 |

EXPENDITURE REPORT - COMPENSABLE CASES
FISCAL YEAR 2008

| Expenditure | Private | Self-Ins. | Public | Total |
|----------------|------------------------|------------------------|-----------------------|-------------------------|
| COMPENSATION | \$20,674,543.80 | \$12,817,428.82 | \$2,479,173.78 | \$35,971,146.40 |
| LUMP SUM | \$645,651.21 | \$279,921.60 | \$14,380.62 | \$939,953.43 |
| JOINT PETITION | \$12,875,798.14 | \$4,356,932.06 | \$504,020.79 | \$17,736,750.99 |
| ATTORNEY FEES | \$6,096,952.26 | \$2,537,632.62 | \$130,239.05 | \$8,764,823.93 |
| OTHER 1 | \$951,025.98 | \$278,441.43 | \$699.22 | \$1,230,166.63 |
| HOSPITAL | \$12,104,302.74 | \$5,847,673.90 | \$624,352.92 | \$18,576,329.56 |
| MEDICAL | \$26,921,437.95 | \$16,792,191.89 | \$2,298,578.61 | \$46,012,208.45 |
| MEDICINE | \$1,987,921.35 | \$923,502.27 | \$250,353.94 | \$3,161,777.56 |
| FUNERAL | \$125,945.88 | \$67,189.68 | \$750.00 | \$193,885.56 |
| REHABILITATION | \$767,197.57 | \$273,325.23 | \$8,943.45 | \$1,049,466.25 |
| OTHER 2 | \$4,036,268.70 | \$1,534,361.00 | \$551,144.81 | \$6,121,774.51 |
| TOTAL | \$87,187,045.58 | \$45,708,600.49 | \$6,862,637.19 | \$139,758,283.26 |

CASES BY EMPLOYER TYPE

7/1/2006 - 6/30/2007

Cases Reported

| | |
|--|---------------|
| Employer Type: Private | |
| Compensable | 6,134 |
| Deaths | 59 |
| Totals | 6,193 |
| Employer Type: Public | |
| Compensable | 618 |
| Deaths | 3 |
| Totals | 621 |
| Employer Type: Self Insured | |
| Compensable | 1,885 |
| Deaths | 12 |
| Totals | 1,897 |
| Employer Type: Self Insured Group | |
| Compensable | 1,307 |
| Deaths | 6 |
| Totals | 1,313 |
| TOTAL THIS REPORT: | 10,024 |

Cases Closed

| | |
|---|--------------|
| Employer Type Private | |
| TTD | 4,341 |
| TPD | 45 |
| PPD | 261 |
| PTD | 21 |
| Death | 60 |
| Second Injury Fund | 15 |
| Totals | 4,743 |
| Employer Type Public | |
| TTD | 521 |
| TPD | 1 |
| PPD | 15 |
| PTD | 4 |
| Death | 4 |
| Second Injury Fund | 1 |
| Totals | 546 |
| Employer Type Self Insured | |
| TTD | 1,694 |
| TPD | 30 |
| PPD | 155 |
| PTD | 3 |
| Death | 14 |
| Second Injury Fund | 7 |
| Totals | 1,903 |
| Employer Type Self Insured Group | |
| TTD | 915 |
| TPD | 17 |
| PPD | 76 |
| PTD | 1 |
| Death | 11 |
| Second Injury Fund | 3 |
| Totals | 1,023 |
| TOTAL THIS REPORT: | 8,215 |

CASES BY EMPLOYER TYPE

7/1/2007 - 6/30/2008

Cases Reported

| | |
|--|--------------|
| Employer Type: Private | |
| Compensable | 5,745 |
| Deaths | 55 |
| Totals | 5,800 |
| Employer Type: Public | |
| Compensable | 656 |
| Deaths | 3 |
| Totals | 659 |
| Employer Type: Self Insured | |
| Compensable | 1,876 |
| Deaths | 6 |
| Totals | 1,882 |
| Employer Type: Self Insured Group | |
| Compensable | 1,274 |
| Deaths | 7 |
| Totals | 1,281 |
| TOTAL THIS REPORT: | 9,622 |

Cases Closed

| | |
|---|--------------|
| Employer Type Private | |
| TTD | 3,704 |
| TPD | 43 |
| PPD | 235 |
| PTD | 6 |
| Death | 51 |
| Second Injury Fund | 14 |
| Totals | 4,053 |
| Employer Type Public | |
| TTD | 488 |
| PPD | 14 |
| PTD | 10 |
| Death | 4 |
| Second Injury Fund | 1 |
| Totals | 517 |
| Employer Type Self Insured | |
| TTD | 1,712 |
| TPD | 52 |
| PPD | 160 |
| PTD | 4 |
| Death | 16 |
| Second Injury Fund | 20 |
| Totals | 1,964 |
| Employer Type Self Insured Group | |
| TTD | 1,195 |
| TPD | 7 |
| PPD | 94 |
| Death | 7 |
| Second Injury Fund | 1 |
| Totals | 1,304 |
| TOTAL THIS REPORT: | 7,838 |

CASES BY COUNTY**FISCAL YEAR 2007**

| COUNTY | REPORTED CASES | CLOSED CASES |
|---------------|-----------------------|---------------------|
| ARKANSAS | 123 | 96 |
| ASHLEY | 70 | 55 |
| BAXTER | 132 | 111 |
| BENTON | 798 | 659 |
| BOONE | 133 | 108 |
| BRADLEY | 55 | 55 |
| CALHOUN | 9 | 12 |
| CARROLL | 72 | 52 |
| CHICOT | 39 | 24 |
| CLARK | 74 | 67 |
| CLAY | 53 | 41 |
| CLEBURNE | 71 | 62 |
| CLEVELAND | 11 | 14 |
| COLUMBIA | 76 | 65 |
| CONWAY | 57 | 36 |
| CRAIGHEAD | 340 | 268 |
| CRAWFORD | 257 | 221 |
| CRITTENDEN | 181 | 118 |
| CROSS | 48 | 41 |
| DALLAS | 36 | 31 |
| DESHA | 55 | 50 |
| DREW | 78 | 69 |
| FAULKNER | 311 | 308 |
| FRANKLIN | 42 | 22 |
| FULTON | 14 | 12 |
| GARLAND | 269 | 233 |
| GRANT | 38 | 39 |

CASES BY COUNTY**FISCAL YEAR 2007**

| COUNTY | REPORTED CASES | CLOSED CASES |
|---------------|-----------------------|---------------------|
| GREENE | 173 | 112 |
| HEMPSTEAD | 2 | 12 |
| HOT SPRING | 74 | 64 |
| HOWARD | 59 | 63 |
| INDEPENDENCE | 162 | 118 |
| IZARD | 18 | 8 |
| JACKSON | 93 | 55 |
| JEFFERSON | 342 | 301 |
| JOHNSON | 54 | 50 |
| LAFAYETTE | 7 | 4 |
| LAWRENCE | 32 | 31 |
| LEE | 25 | 21 |
| LINCOLN | 47 | 50 |
| LITTLE RIVER | 55 | 49 |
| LOGAN | 41 | 34 |
| LONOKE | 109 | 65 |
| MADISON | 14 | 13 |
| MARION | 36 | 41 |
| MILLER | 223 | 201 |
| MISSISSIPPI | 152 | 120 |
| MONROE | 20 | 21 |
| MONTGOMERY | 18 | 11 |
| NEVADA | 12 | 20 |
| NEWTON | 7 | 3 |
| NO COUNTY | 84 | 49 |
| OUACHITA | 77 | 76 |
| OUT OF STATE | 67 | 118 |

CASES BY COUNTY**FISCAL YEAR 2007**

| COUNTY | REPORTED CASES | CLOSED CASES |
|----------------|-----------------------|---------------------|
| PERRY | 10 | 8 |
| PHILLIPS | 76 | 54 |
| PIKE | 65 | 56 |
| POINSETT | 55 | 40 |
| POLK | 41 | 41 |
| POPE | 169 | 162 |
| PRAIRIE | 7 | 11 |
| PULASKI | 2,055 | 1,495 |
| RANDOLPH | 34 | 33 |
| SALINE | 185 | 143 |
| SCOTT | 19 | 20 |
| SEARCY | 7 | 5 |
| SEBASTIAN | 567 | 452 |
| SEVIER | 16 | 14 |
| SHARP | 31 | 26 |
| ST FRANCIS | 60 | 85 |
| STONE | 18 | 57 |
| UNION | 168 | 143 |
| VAN BUREN | 45 | 41 |
| WASHINGTON | 688 | 506 |
| WHITE | 205 | 190 |
| WOODRUFF | 22 | 24 |
| YELL | 36 | 30 |
| TOTALS: | 10,024 | 8,215 |

CASES BY COUNTY**FISCAL YEAR 2008**

| COUNTY | REPORTED CASES | CLOSED CASES |
|---------------|-----------------------|---------------------|
| ARKANSAS | 111 | 76 |
| ASHLEY | 141 | 56 |
| BAXTER | 115 | 113 |
| BENTON | 721 | 591 |
| BOONE | 117 | 116 |
| BRADLEY | 60 | 43 |
| CALHOUN | 13 | 14 |
| CARROLL | 70 | 63 |
| CHICOT | 29 | 25 |
| CLARK | 60 | 50 |
| CLAY | 52 | 41 |
| CLEBURNE | 84 | 50 |
| CLEVELAND | 19 | 11 |
| COLUMBIA | 66 | 81 |
| CONWAY | 54 | 44 |
| CRAIGHEAD | 322 | 269 |
| CRAWFORD | 256 | 213 |
| CRITTENDEN | 184 | 115 |
| CROSS | 47 | 46 |
| DALLAS | 25 | 30 |
| DESHA | 36 | 31 |
| DREW | 79 | 44 |
| FAULKNER | 300 | 260 |
| FRANKLIN | 31 | 23 |
| FULTON | 17 | 19 |
| GARLAND | 275 | 188 |
| GRANT | 32 | 37 |

CASES BY COUNTY**FISCAL YEAR 2008**

| COUNTY | REPORTED CASES | CLOSED CASES |
|---------------|-----------------------|---------------------|
| GREENE | 139 | 136 |
| HEMPSTEAD | 17 | 11 |
| HOT SPRING | 68 | 62 |
| HOWARD | 45 | 45 |
| INDEPENDENCE | 147 | 132 |
| IZARD | 17 | 18 |
| JACKSON | 84 | 62 |
| JEFFERSON | 323 | 292 |
| JOHNSON | 59 | 56 |
| LAFAYETTE | 7 | 12 |
| LAWRENCE | 27 | 31 |
| LEE | 25 | 17 |
| LINCOLN | 34 | 33 |
| LITTLE RIVER | 28 | 33 |
| LOGAN | 55 | 54 |
| LONOKE | 101 | 85 |
| MADISON | 21 | 13 |
| MARION | 44 | 34 |
| MILLER | 159 | 179 |
| MISSISSIPPI | 164 | 126 |
| MONROE | 10 | 10 |
| MONTGOMERY | 11 | 15 |
| NEVADA | 23 | 19 |
| NEWTON | 12 | 9 |
| NO COUNTY | 76 | 70 |
| OUACHITA | 98 | 62 |
| OUT OF STATE | 119 | 84 |

CASES BY COUNTY**FISCAL YEAR 2008**

| COUNTY | REPORTED CASES | CLOSED CASES |
|----------------|-----------------------|---------------------|
| PERRY | 14 | 10 |
| PHILLIPS | 70 | 61 |
| PIKE | 51 | 43 |
| POINSETT | 44 | 39 |
| POLK | 59 | 39 |
| POPE | 157 | 137 |
| PRAIRIE | 15 | 10 |
| PULASKI | 1,971 | 1,560 |
| RANDOLPH | 37 | 33 |
| SALINE | 191 | 144 |
| SCOTT | 19 | 16 |
| SEARCY | 13 | 9 |
| SEBASTIAN | 508 | 380 |
| SEVIER | 19 | 10 |
| SHARP | 30 | 29 |
| ST FRANCIS | 63 | 50 |
| STONE | 30 | 27 |
| UNION | 171 | 127 |
| VAN BUREN | 52 | 35 |
| WASHINGTON | 593 | 484 |
| WHITE | 235 | 199 |
| WOODRUFF | 17 | 18 |
| YELL | 34 | 29 |
| TOTALS: | 9,622 | 7,838 |

CASES BY INDUSTRY

FISCAL YEAR 2007

| INDUSTRY | REPORTED CASES | CLOSED CASES | DEATH CASES |
|--------------------------------------|-------------------|-----------------|----------------|
| ADMIN OF ECONOMIC PROGRAMS | 7 | 4 | 0 |
| ADMIN. OF HUMAN RESOURCES | 130 | 87 | 1 |
| AGRICULTURAL PRODUCTION-CROPS | 12 | 9 | 1 |
| AGRICULTURAL PRODUCTION-LIVESTOCK | 11 | 7 | 0 |
| AGRICULTURAL SERVICES | 123 | 106 | 3 |
| AMUSEMENT & RECREATION SERV | 44 | 46 | 0 |
| APPAREL AND ACCESSORY STORES | 19 | 16 | 0 |
| APPAREL AND OTHER TEXTILE | 16 | 9 | 0 |
| AUTO REPAIR,SERVICES&PARKING | 49 | 39 | 0 |
| AUTOMOTIVE DEALERS & SERVICE STATION | 125 | 86 | 0 |
| BUILDING MATERIALS &GARDEN SUPP | 137 | 114 | 1 |
| BUSINESS SERVICES | 527 | 422 | 1 |
| CHEMICALS AND ALLIED PRODUCTS | 49 | 43 | 0 |
| COAL MINING | 5 | 2 | 0 |
| COMMUNICATIONS | 64 | 41 | 2 |
| CONSTRUCTION-SPECIAL TRADE CONTRAC | 618 | 471 | 11 |
| DEPOSITORY INSTITUTIONS | 41 | 21 | 1 |
| EATING AND DRINKING PLACES | 311 | 215 | 1 |
| EDUCATIONAL SERVICES/OLD CODE | 416 | 282 | 1 |
| ELECTRIC, GAS & SANITARY SERVICES | 181 | 141 | 1 |
| ELECTRONIC & OTHER ELECTRICAL EQUIPM | 164 | 166 | 0 |
| ENGINEERING & MANAGEMENT SERV | 65 | 38 | 0 |
| ENVIRONMENTAL QUALITY & HOUSING | 33 | 22 | 0 |
| EXECUTIVE,LEGISLATIVE & GENERAL | 16 | 16 | 0 |
| FABRICATED METAL PRODUCTS | 148 | 127 | 2 |
| FINANCE,TAXATION & MONETARY POLICY | 16 | 3 | 0 |
| FISHING, HUNTING AND TRAPPING | 1 | 1 | 0 |
| FOOD AND KINDRED PRODUCTS | 476 | 348 | 5 |
| FOOD STORES | 120 | 108 | 0 |
| FORESTRY | 12 | 7 | 0 |
| FURN. & HOMEFURNISHING STORES | 37 | 21 | 0 |
| FURNITURE AND FIXTURES | 80 | 82 | 0 |

CASES BY INDUSTRY

FISCAL YEAR 2007

| INDUSTRY | REPORTED CASES | CLOSED CASES | DEATH CASES |
|-------------------------------------|-------------------|-----------------|----------------|
| GENERAL BUILDING CONTRACTORS | 123 | 119 | 0 |
| GENERAL MERCHANDISE STORES | 688 | 616 | 2 |
| HEALTH SERVICES | 780 | 640 | 2 |
| HEAVY CONSTRUCTION EXCL BUILDINGS | 324 | 297 | 2 |
| HOLDING & OTHER INVESTMENT OFFICE | 8 | 3 | 0 |
| HOTELS & OTHER LODGING PLACES | 63 | 62 | 1 |
| INDUSTRIAL MACHINERY & EQUIP | 205 | 175 | 1 |
| INSURANCE AGTS, BROKERS & SERV | 6 | 10 | 0 |
| INSURANCE CARRIERS | 16 | 18 | 0 |
| JUSTICE,PUBLIC ORDER & SAFETY | 396 | 316 | 1 |
| LEATHER AND LEATHER PRODUCTS | 12 | 9 | 0 |
| LEGAL SERVICES | 5 | 7 | 0 |
| LOCAL & INTERURBAN PASSENGER TRANSP | 60 | 33 | 0 |
| LUMBER & WOOD PRODUCTS | 238 | 258 | 3 |
| MEAS ANALYZ & CONTR INSTRUMENTS | 26 | 22 | 0 |
| MEMBERSHIP ORGANIZATIONS | 36 | 25 | 0 |
| METAL MINING | 7 | 5 | 1 |
| MISCELLANEOUS MFG INDUSTRIES | 30 | 25 | 0 |
| MISCELLANEOUS REPAIR SERVICES | 35 | 24 | 0 |
| MISCELLANEOUS RETAIL | 90 | 57 | 0 |
| MOTION PICTURES | 16 | 9 | 0 |
| MUSEUMS,BOTANICAL,ZOOLOGICAL GARD | 4 | 0 | 0 |
| NATIONAL SECURITY & INTL AFFAIRS | 9 | 4 | 0 |
| NONCLASSIFIABLE ESTABLISHMENTS | 32 | 21 | 0 |
| NONDEPOSITORY INSTITUTIONS | 4 | 3 | 0 |
| NONMETALLIC MINERALS,EXCEPT FUELS | 15 | 9 | 0 |
| OIL AND GAS EXTRACTION | 84 | 57 | 0 |
| PAPER AND ALLIED PRODUCTS | 100 | 96 | 1 |
| PERSONAL SERVICES | 48 | 24 | 0 |
| PETROLEUM AND COAL PRODUCTS | 15 | 11 | 0 |
| PIPELINES EXCEPT NATURAL GAS | 0 | 1 | 0 |
| PRIMARY METAL INDUSTRIES | 97 | 83 | 1 |

CASES BY INDUSTRY
FISCAL YEAR 2007

| INDUSTRY | REPORTED CASES | CLOSED CASES | DEATH CASES |
|--------------------------------------|-------------------|-----------------|----------------|
| PRINTING AND PUBLISHING | 65 | 28 | 0 |
| PRIVATE HOUSEHOLDS | 1 | 0 | 0 |
| RAILROAD TRANSPORTATION | 2 | 1 | 0 |
| REAL ESTATE | 57 | 59 | 1 |
| RUBBER & MISC. PLASTICS PRODUCTS | 188 | 192 | 2 |
| SECURITY AND COMMODITY BROKERS | 3 | 3 | 0 |
| SERVICES, NEC | 12 | 8 | 0 |
| SOCIAL SERVICES | 163 | 185 | 0 |
| STONE, CLAY & GLASS & CONCRETE PRODU | 66 | 54 | 0 |
| TEXTILE MILL PRODUCTS | 6 | 5 | 0 |
| TRANSPORTATION BY AIR | 35 | 22 | 0 |
| TRANSPORTATION EQUIPMENT | 235 | 206 | 1 |
| TRANSPORTATION SERVICES | 27 | 15 | 0 |
| TRUCKING & WAREHOUSING | 1,050 | 870 | 19 |
| U.S. POSTAL SERVICE | 1 | 2 | 0 |
| UNKNOWN | 75 | 113 | 2 |
| WATER TRANSPORTATION | 21 | 19 | 0 |
| WHOLESALE TRADE-DURABLE GOODS | 209 | 148 | 5 |
| WHOLESALE TRADE-NONDURABLE GOODS | 183 | 146 | 4 |
| TOTALS: | 10,024 | 8,215 | 80 |

CASES BY INDUSTRY

FISCAL YEAR 2008

| INDUSTRY | REPORTED CASES | CLOSED CASES | DEATH CASES |
|--------------------------------------|-------------------|-----------------|----------------|
| ADMIN OF ECONOMIC PROGRAMS | 5 | 2 | 0 |
| ADMIN. OF HUMAN RESOURCES | 116 | 98 | 0 |
| AGRICULTURAL PRODUCTION-CROPS | 11 | 6 | 0 |
| AGRICULTURAL PRODUCTION-LIVESTOCK | 14 | 22 | 0 |
| AGRICULTURAL SERVICES | 91 | 72 | 0 |
| AMUSEMENT & RECREATION SERV | 37 | 28 | 0 |
| APPAREL AND ACCESSORY STORES | 22 | 15 | 0 |
| APPAREL AND OTHER TEXTILE | 16 | 12 | 0 |
| AUTO REPAIR,SERVICES&PARKING | 52 | 38 | 2 |
| AUTOMOTIVE DEALERS & SERVICE STATION | 118 | 104 | 0 |
| BUILDING MATERIALS &GARDEN SUPP | 124 | 86 | 2 |
| BUSINESS SERVICES | 464 | 325 | 2 |
| CHEMICALS AND ALLIED PRODUCTS | 58 | 38 | 0 |
| COAL MINING | 5 | 2 | 0 |
| COMMUNICATIONS | 60 | 41 | 0 |
| CONSTRUCTION-SPECIAL TRADE CONTRAC | 569 | 415 | 9 |
| DEPOSITORY INSTITUTIONS | 26 | 22 | 0 |
| EATING AND DRINKING PLACES | 285 | 202 | 0 |
| EDUCATIONAL SERVICES/OLD CODE | 452 | 423 | 0 |
| ELECTRIC, GAS & SANITARY SERVICES | 209 | 126 | 3 |
| ELECTRONIC & OTHER ELECTRICAL EQUIPM | 174 | 144 | 0 |
| ENGINEERING & MANAGEMENT SERV | 49 | 35 | 1 |
| ENVIRONMENTAL QUALITY & HOUSING | 37 | 29 | 1 |
| EXECUTIVE,LEGISLATIVE & GENERAL | 18 | 33 | 0 |
| FABRICATED METAL PRODUCTS | 141 | 110 | 0 |
| FINANCE,TAXATION & MONETARY POLICY | 20 | 11 | 0 |
| FISHING, HUNTING AND TRAPPING | 3 | 2 | 0 |
| FOOD AND KINDRED PRODUCTS | 396 | 350 | 1 |
| FOOD STORES | 168 | 96 | 0 |
| FORESTRY | 31 | 21 | 1 |
| FURN. & HOMEFURNISHING STORES | 36 | 28 | 0 |
| FURNITURE AND FIXTURES | 38 | 42 | 1 |

CASES BY INDUSTRY

FISCAL YEAR 2008

| INDUSTRY | REPORTED CASES | CLOSED CASES | DEATH CASES |
|-------------------------------------|-------------------|-----------------|----------------|
| GENERAL BUILDING CONTRACTORS | 113 | 92 | 1 |
| GENERAL MERCHANDISE STORES | 690 | 686 | 3 |
| HEALTH SERVICES | 763 | 618 | 0 |
| HEAVY CONSTRUCTION EXCL BUILDINGS | 296 | 284 | 3 |
| HOLDING & OTHER INVESTMENT OFFICE | 9 | 2 | 0 |
| HOTELS & OTHER LODGING PLACES | 61 | 33 | 2 |
| INDUSTRIAL MACHINERY & EQUIP | 222 | 148 | 1 |
| INSURANCE AGTS, BROKERS & SERV | 5 | 0 | 0 |
| INSURANCE CARRIERS | 16 | 12 | 0 |
| JUSTICE,PUBLIC ORDER & SAFETY | 411 | 354 | 3 |
| LEATHER AND LEATHER PRODUCTS | 15 | 14 | 0 |
| LEGAL SERVICES | 5 | 3 | 0 |
| LOCAL & INTERURBAN PASSENGER TRANSP | 73 | 52 | 0 |
| LUMBER & WOOD PRODUCTS | 293 | 186 | 4 |
| MEAS ANALYZ & CONTR INSTRUMENTS | 34 | 22 | 0 |
| MEMBERSHIP ORGANIZATIONS | 45 | 31 | 0 |
| METAL MINING | 8 | 3 | 0 |
| MISCELLANEOUS MFG INDUSTRIES | 20 | 14 | 0 |
| MISCELLANEOUS REPAIR SERVICES | 27 | 20 | 0 |
| MISCELLANEOUS RETAIL | 69 | 58 | 0 |
| MOTION PICTURES | 5 | 6 | 0 |
| NATIONAL SECURITY & INTL AFFAIRS | 10 | 7 | 1 |
| NONCLASSIFIABLE ESTABLISHMENTS | 35 | 28 | 0 |
| NONDEPOSITORY INSTITUTIONS | 2 | 1 | 0 |
| NONMETALLIC MINERALS,EXCEPT FUELS | 16 | 10 | 0 |
| OIL AND GAS EXTRACTION | 109 | 49 | 1 |
| PAPER AND ALLIED PRODUCTS | 100 | 88 | 0 |
| PERSONAL SERVICES | 25 | 29 | 0 |
| PETROLEUM AND COAL PRODUCTS | 24 | 8 | 2 |
| PIPELINES EXCEPT NATURAL GAS | 4 | 3 | 0 |
| PRIMARY METAL INDUSTRIES | 82 | 68 | 2 |
| PRINTING AND PUBLISHING | 48 | 54 | 0 |

CASES BY INDUSTRY

FISCAL YEAR 2008

| INDUSTRY | REPORTED CASES | CLOSED CASES | DEATH CASES |
|--------------------------------------|-------------------|-----------------|----------------|
| PRIVATE HOUSEHOLDS | 0 | 1 | 0 |
| RAILROAD TRANSPORTATION | 0 | 1 | 0 |
| REAL ESTATE | 58 | 38 | 0 |
| RUBBER & MISC. PLASTICS PRODUCTS | 136 | 166 | 0 |
| SECURITY AND COMMODITY BROKERS | 0 | 1 | 0 |
| SERVICES, NEC | 14 | 13 | 0 |
| SOCIAL SERVICES | 184 | 178 | 0 |
| STONE, CLAY & GLASS & CONCRETE PRODU | 65 | 63 | 2 |
| TEXTILE MILL PRODUCTS | 9 | 3 | 0 |
| TRANSPORTATION BY AIR | 46 | 35 | 2 |
| TRANSPORTATION EQUIPMENT | 165 | 160 | 2 |
| TRANSPORTATION SERVICES | 20 | 18 | 0 |
| TRUCKING & WAREHOUSING | 1,027 | 796 | 13 |
| U.S. POSTAL SERVICE | 1 | 1 | 0 |
| UNKNOWN | 55 | 103 | 1 |
| WATER TRANSPORTATION | 20 | 12 | 0 |
| WHOLESALE TRADE-DURABLE GOODS | 177 | 142 | 4 |
| WHOLESALE TRADE-NONDURABLE GOODS | 165 | 146 | 1 |
| TOTALS: | 9,622 | 7,838 | 71 |

PART OF BODY INJURED

FISCAL YEAR 2007

| PART OF BODY INJURED | REPORTED CASES | CLOSED CASES |
|---|-------------------|-----------------|
| ABDOMEN (INCLUDING GROIN) | 377 | 257 |
| ANKLE | 450 | 329 |
| BRAIN | 6 | 9 |
| BUTTOCKS | 33 | 22 |
| CHEST INC: RIBS, STERNUM, AND SOFT TISS | 102 | 82 |
| DISC (NECK AREA) | 11 | 17 |
| DISC (TRUNK AREA) | 8 | 10 |
| EAR(S) | 13 | 21 |
| ELBOW | 153 | 130 |
| EYE(S) | 80 | 78 |
| FACIAL BONES | 24 | 15 |
| FINGER(S) | 491 | 378 |
| FOOT | 327 | 265 |
| GREAT TOE | 13 | 12 |
| HAND | 422 | 364 |
| HEART | 24 | 20 |
| HIP | 100 | 68 |
| INTERNAL ORGANS | 18 | 22 |
| KNEE | 993 | 802 |
| LARYNX | 1 | 0 |
| LOW BACK AREA INC: LUMBAR & LUMBO-SAC | 1,648 | 1,441 |
| LOWER ARM | 242 | 203 |
| LOWER LEG | 267 | 216 |
| LUMBAR AND/OR SACRAL VERTEBRA | 6 | 6 |
| LUNGS | 28 | 23 |
| MOUTH | 14 | 12 |
| MULT SYSTEMS AND MULT BODY SYSTEMS | 192 | 171 |
| MULTIPLE BODY PARTS INJURY | 1,576 | 1,180 |
| MULTIPLE HEAD INJURY | 110 | 79 |
| MULTIPLE LOWER EXTREMITIES INJURY | 52 | 70 |
| MULTIPLE NECK INJURY | 72 | 55 |

PART OF BODY INJURED

FISCAL YEAR 2007

| PART OF BODY INJURED | REPORTED CASES | CLOSED CASES |
|---------------------------------------|---------------------------|-------------------------|
| MULTIPLE TRUNK INJURY | 81 | 86 |
| MULTIPLE UPPER EXTREMITIES | 68 | 117 |
| NO PHYSICAL INJURY | 17 | 10 |
| NOSE | 14 | 13 |
| OTHER FACIAL SOFT TISSUE | 5 | 10 |
| PELVIS | 16 | 23 |
| SACRUM AND COCCYX | 5 | 9 |
| SHOULDER(S) | 832 | 652 |
| SKULL | 16 | 26 |
| SOFT TISSUE | 121 | 98 |
| SPINAL CORD | 11 | 9 |
| TEETH | 9 | 4 |
| THIGH | 25 | 24 |
| THUMB | 142 | 105 |
| TOE(S) | 41 | 34 |
| TRACHEA | 1 | 0 |
| UNDEFINED | 37 | 27 |
| UNKNOWN - INSUFFICIENT INFORMATION | 54 | 30 |
| UNSPEC | 5 | 25 |
| UPPER ARM (INC: CLAVICLE AND SCAPULA) | 93 | 105 |
| UPPER BACK AREA (THORACIC AREA) | 64 | 55 |
| VERTEBRAE | 3 | 1 |
| WRIST | 405 | 322 |
| WRIST(S) & HAND(S) | 106 | 73 |
| TOTALS: | 10,024 | 8,215 |

PART OF BODY INJURED

FISCAL YEAR 2008

| PART OF BODY INJURED | REPORTED CASES | CLOSED CASES |
|---|-------------------|-----------------|
| ABDOMEN (INCLUDING GROIN) | 325 | 251 |
| ANKLE | 441 | 327 |
| BRAIN | 10 | 4 |
| BUTTOCKS | 15 | 17 |
| CHEST INC: RIBS, STERNUM, AND SOFT TISS | 110 | 93 |
| DISC (NECK AREA) | 7 | 25 |
| DISC (TRUNK AREA) | 12 | 14 |
| EAR(S) | 17 | 20 |
| ELBOW | 153 | 126 |
| EYE(S) | 56 | 48 |
| FACIAL BONES | 26 | 21 |
| FINGER(S) | 496 | 357 |
| FOOT | 320 | 246 |
| GREAT TOE | 15 | 8 |
| HAND | 385 | 330 |
| HEART | 35 | 19 |
| HIP | 105 | 87 |
| INTERNAL ORGANS | 26 | 28 |
| KNEE | 1,017 | 774 |
| LOW BACK AREA INC: LUMBAR & LUMBO-SAC | 1,511 | 1,343 |
| LOWER ARM | 244 | 198 |
| LOWER LEG | 268 | 209 |
| LUMBAR AND/OR SACRAL VERTEBRA | 7 | 7 |
| LUNGS | 30 | 34 |
| MOUTH | 9 | 9 |
| MULT SYSTEMS AND MULT BODY SYSTEMS | 131 | 115 |
| MULTIPLE BODY PARTS INJURY | 1,592 | 1,225 |
| MULTIPLE HEAD INJURY | 68 | 55 |
| MULTIPLE LOWER EXTREMITIES INJURY | 39 | 27 |
| MULTIPLE NECK INJURY | 73 | 51 |
| MULTIPLE TRUNK INJURY | 85 | 74 |

PART OF BODY INJURED
FISCAL YEAR 2008

| PART OF BODY INJURED | REPORTED CASES | CLOSED CASES |
|---------------------------------------|---------------------------|-------------------------|
| MULTIPLE UPPER EXTREMITIES | 51 | 60 |
| NO PHYSICAL INJURY | 25 | 16 |
| NOSE | 19 | 10 |
| OTHER FACIAL SOFT TISSUE | 18 | 14 |
| PELVIS | 23 | 13 |
| SACRUM AND COCCYX | 4 | 3 |
| SHOULDER(S) | 814 | 658 |
| SKULL | 31 | 27 |
| SOFT TISSUE | 137 | 116 |
| SPINAL CORD | 4 | 1 |
| TEETH | 12 | 8 |
| THIGH | 26 | 25 |
| THUMB | 101 | 98 |
| TOE(S) | 29 | 28 |
| TRACHEA | 1 | 2 |
| UNDEFINED | 21 | 24 |
| UNKNOWN - INSUFFICIENT INFORMATION | 61 | 43 |
| UNSPEC | 4 | 13 |
| UPPER ARM (INC: CLAVICLE AND SCAPULA) | 105 | 86 |
| UPPER BACK AREA (THORACIC AREA) | 79 | 72 |
| VERTEBRAE | 3 | 2 |
| WRIST | 341 | 312 |
| WRIST(S) & HAND(S) | 85 | 65 |
| TOTALS: | 9,622 | 7,838 |

**FATALITIES BY AGE AND SEX
FISCAL YEAR 2007**

| Age In Years | Female | Male | Unknown | Total |
|--|---------------|-------------|----------------|--------------|
| 14-19 | 0 | 0 | 0 | 0 |
| 20-29 | 0 | 5 | 0 | 5 |
| 30-39 | 0 | 12 | 1 | 13 |
| 40-49 | 1 | 22 | 1 | 24 |
| 50-59 | 1 | 17 | 0 | 18 |
| 60-69 | 0 | 13 | 0 | 13 |
| 70-79 | 0 | 4 | 0 | 4 |
| Unknown | 0 | 3 | 0 | 3 |
| TOTAL | 2 | 76 | 2 | 80 |
| TOTAL FATALITIES FOR FY 2007 - 80 | | | | |

**FATALITIES BY AGE AND SEX
FISCAL YEAR 2008**

| Age In Years | Female | Male | Unknown | Total |
|-----------------------------------|--------|------|---------|-------|
| 14-19 | 1 | 1 | 0 | 2 |
| 20-29 | 0 | 13 | 0 | 13 |
| 30-39 | 0 | 7 | 0 | 7 |
| 40-49 | 1 | 11 | 0 | 12 |
| 50-59 | 2 | 21 | 1 | 24 |
| 60-69 | 0 | 9 | 0 | 9 |
| 70-79 | 0 | 1 | 0 | 1 |
| Unknown | 0 | 3 | 0 | 3 |
| TOTAL | 4 | 66 | 1 | 71 |
| TOTAL FATALITIES FOR FY 2008 - 71 | | | | |